

Company PALOMINO PETROLEUM, INC.  
 Well THE WORLD IS NOT ENOUGH #1  
 Field WILDCAT  
 County NESS  
 State KANSAS

Location: API # : 15-135-26118-0000 Other Services

SEC 12 TWP 18S RGE 25W  
 382' FSL & 140' FEL  
 Permanent Datum GROUND LEVEL Elevation 2334'  
 Log Measured From KELLY BUSHING 5' A.G.L.  
 Drilling Measured From KELLY BUSHING  
 Elevation  
 K.B. 2339'  
 D.F. 2337'  
 G.L. 2334'

Date	SEPT. 20, 2021
Run Number	ONE
Depth Driller	4477'
Depth Logger	4410'
Bottom Logged Interval	4409'
Top Log Interval	2800'
Open Hole Size	///
Type Fluid	WATER
Density / Viscosity	///
Max. Recorded Temp.	120F
Estimated Cement Top	2900'
Time Well Ready	///
Time Logger on Bottom	///
Equipment Number	PT-09
Location	HAYS
Recorded By	BOB KLAUS
Witnessed By	JOE RUPP

Borehole Record		Tubing Record					
Run Number	Bit	From	To	Size	Weight	From	To
ONE	12.25"	0	211'	2 1/2"			
TWO	7.875"	211'	4477'				

Casing Record	Size	Wgt/Ft	Top	Bottom
Surface String	8 5/8"		0	211'
Prot. String				
Production String	5 1/2"	14#	0	
Liner				

<<< Fold Here >>>

All interpretations are opinions based on inferences from electrical or other measurements and we cannot and do not guarantee the accuracy or correctness of any interpretation, and we shall not, except in the case of gross or willful negligence on our part, be liable or responsible for any loss, costs, damages, or expenses incurred or sustained by anyone resulting from any interpretation made by any of our officers, agents or employees. These interpretations are also subject to our general terms and conditions set out in our current Price Schedule.

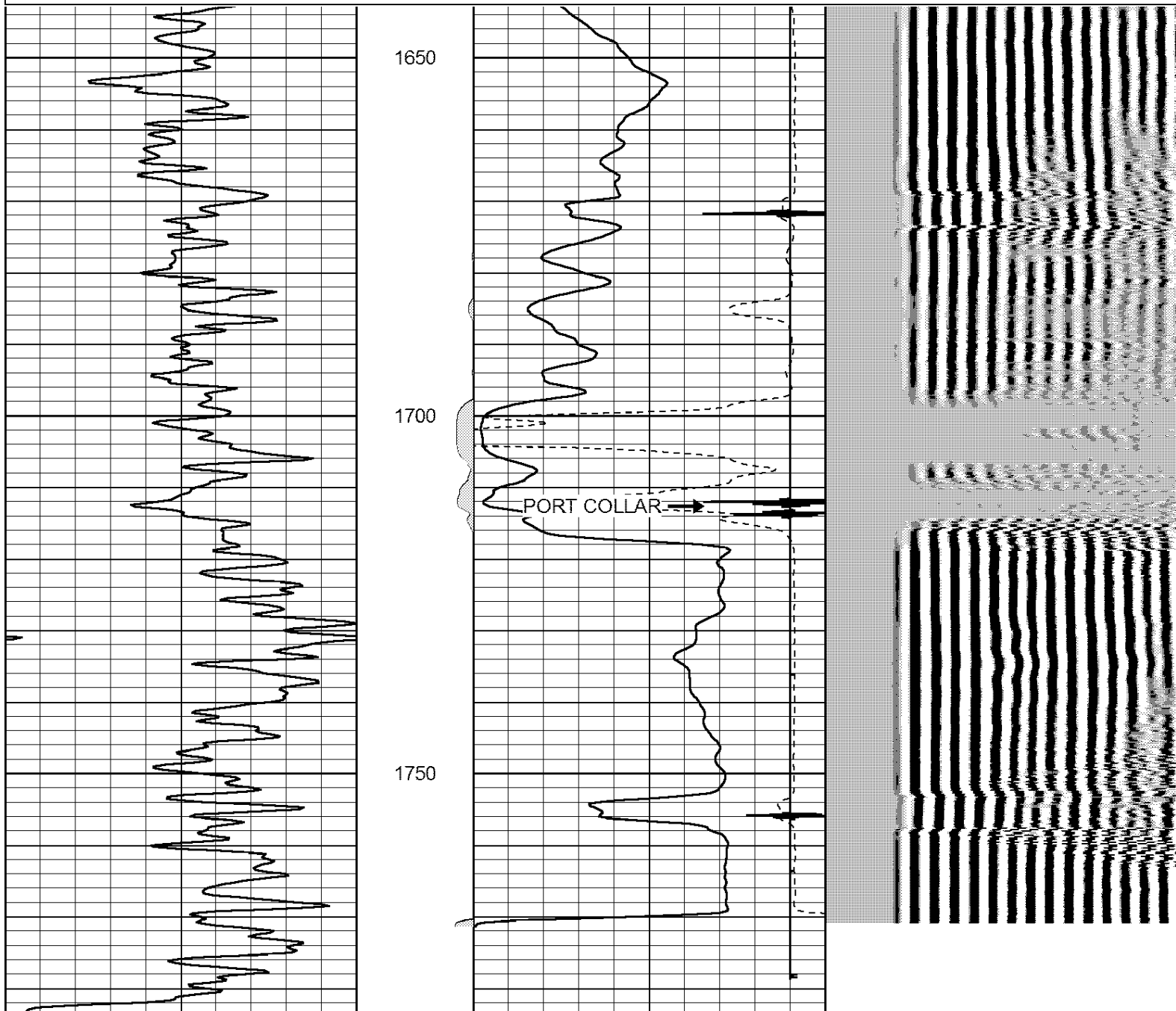
Comments

THANK YOU FOR USING  
 PERF-TECH WIRELINE SERVICES, INC.  
 785-628-3969

DIRECTIONS: NESS CITY, KANSAS  
 WEST to L Rd, 3 NORTH,  
 WEST into

Database File: sept202109c.db  
 Dataset Pathname: pass5  
 Presentation Format: 3x5  
 Dataset Creation: Mon Sep 20 10:57:34 2021 by Log Std Casedhole 06040  
 Charted by: Depth in Feet scaled 1:240

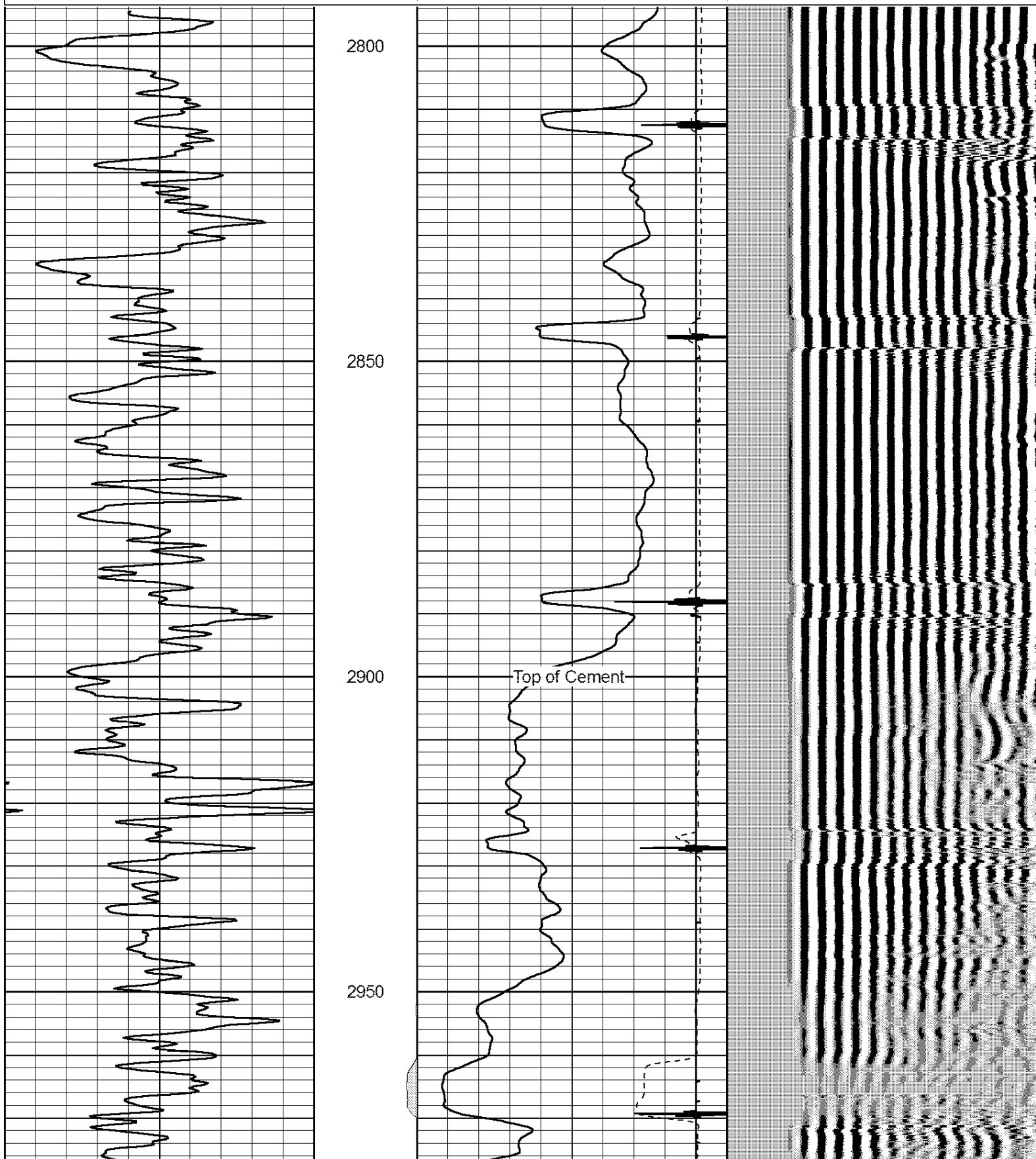
0	Gamma Ray (GAPI)	150	0	3' AMPLITUDE (mV)	100	200	5' Variable Density	1100
			475	3' TRAVEL TIME (usec)	235			
			9	Collar Locator	-1			

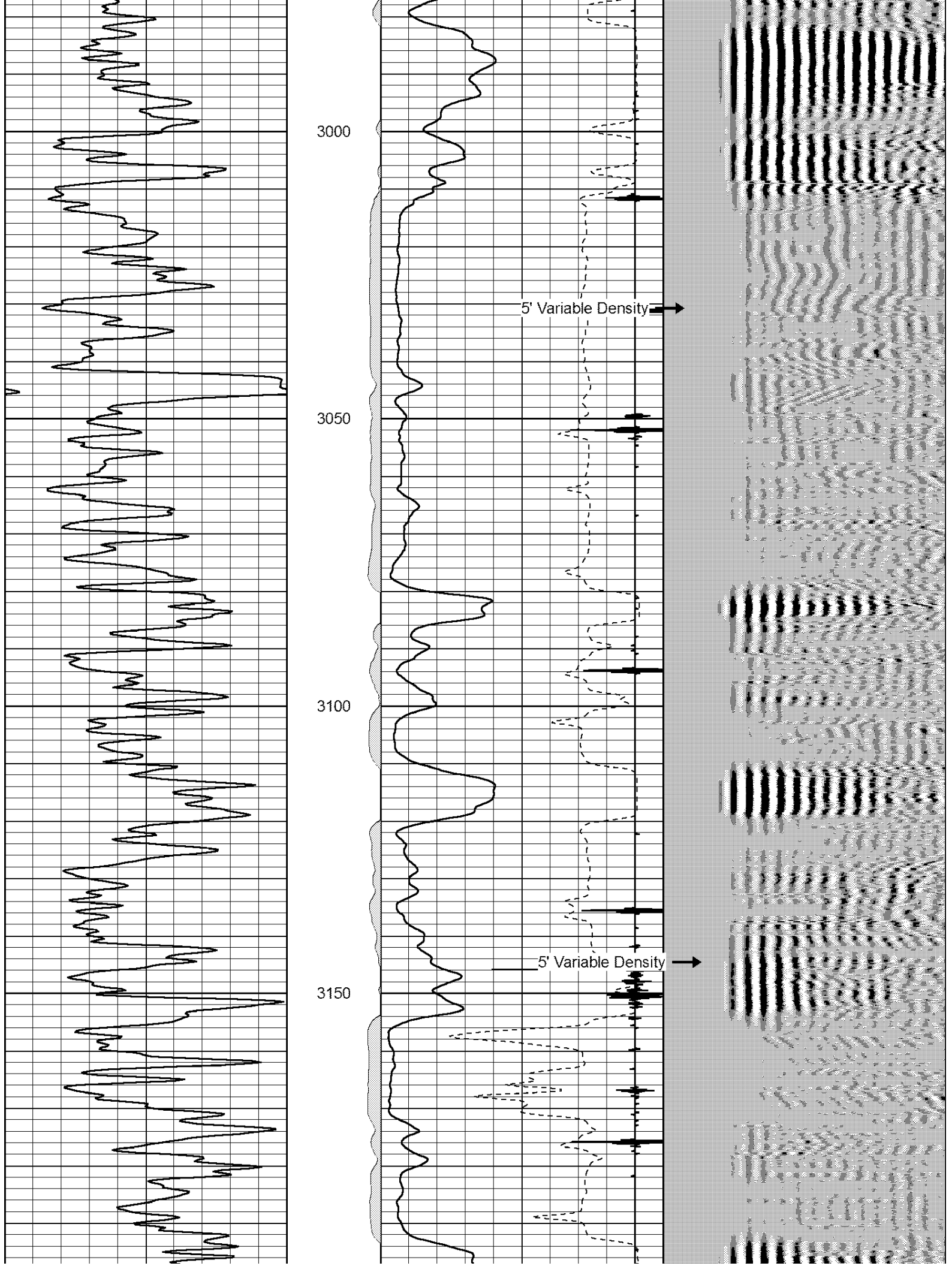


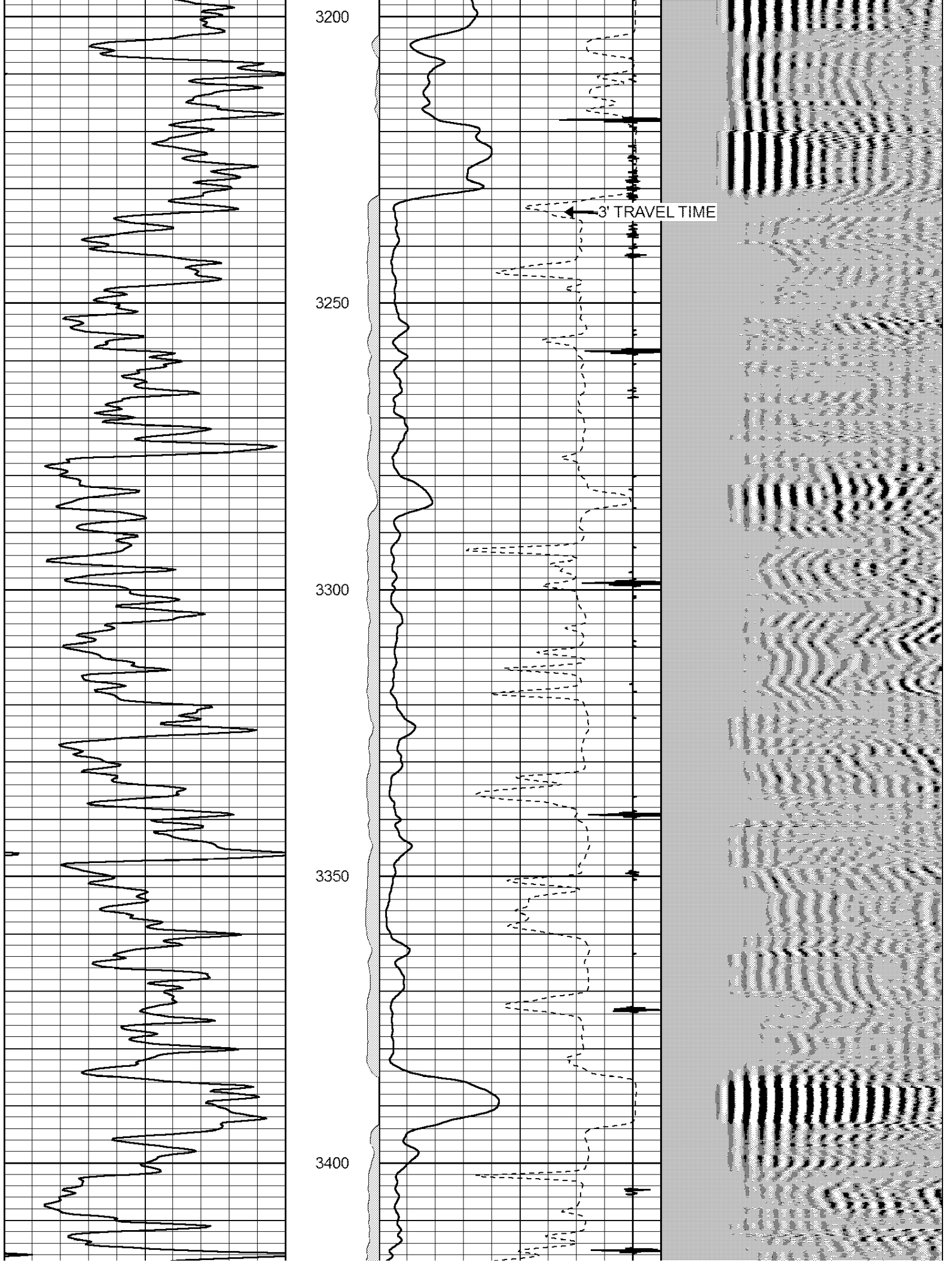
0	Gamma Ray (GAPI)	150	0	3' AMPLITUDE (mV)	100	200	5' Variable Density	1100
			475	3' TRAVEL TIME (usec)	235			
			9	Collar Locator	-1			

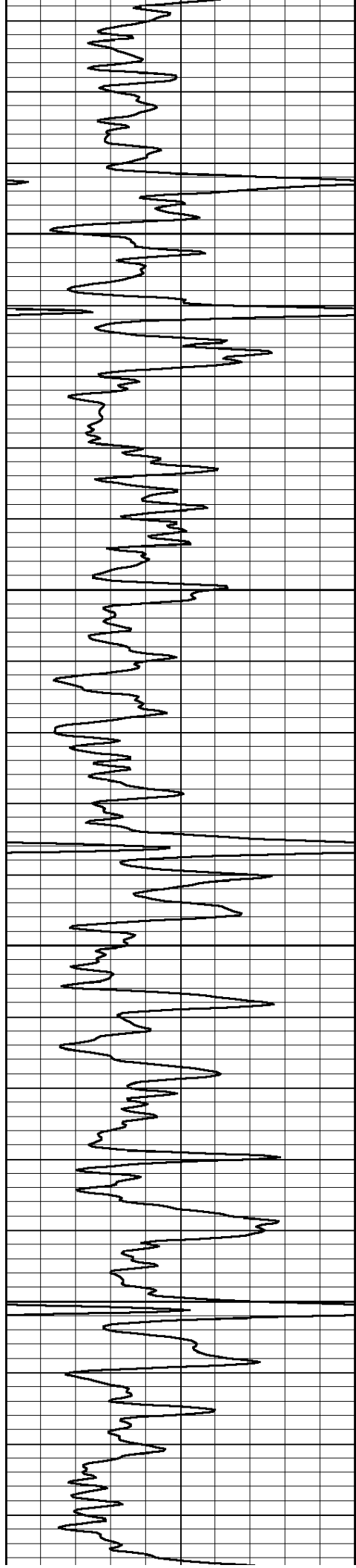
Database File: sept202109c.db  
Dataset Pathname: pass4  
Presentation Format: 3x5  
Dataset Creation: Mon Sep 20 10:36:37 2021 by Log Std Casedhole 06040  
Charted by: Depth in Feet scaled 1:240

0	Gamma Ray (GAPI)	150	0	3' AMPLITUDE (mV)	100	200	5' Variable Density	1100
			475	3' TRAVEL TIME (usec)	235			
			9	Collar Locator	-1			







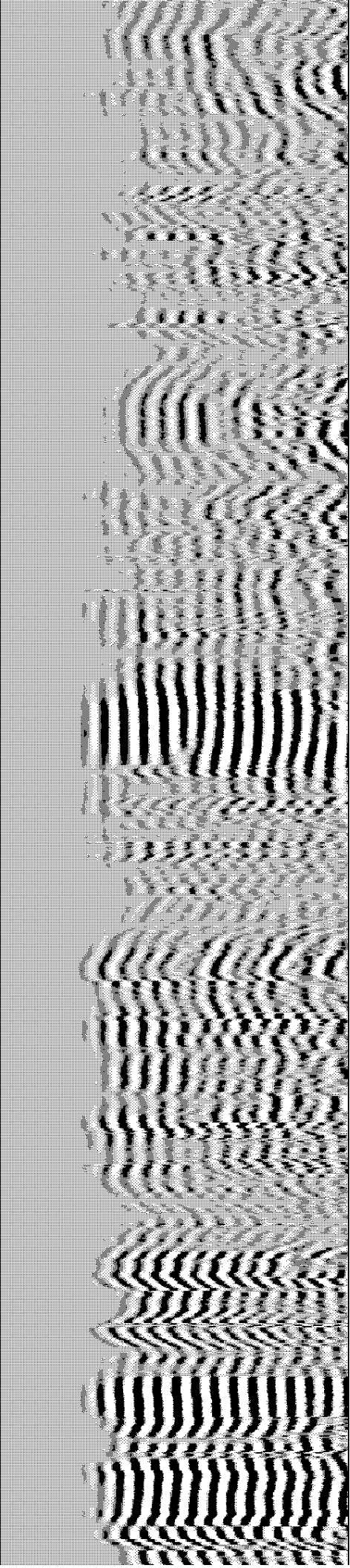
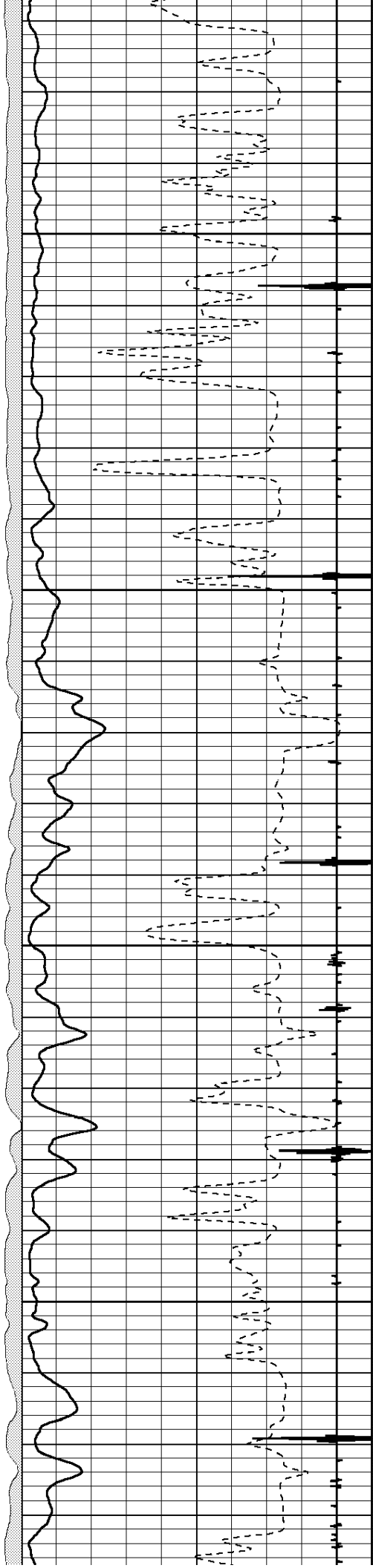


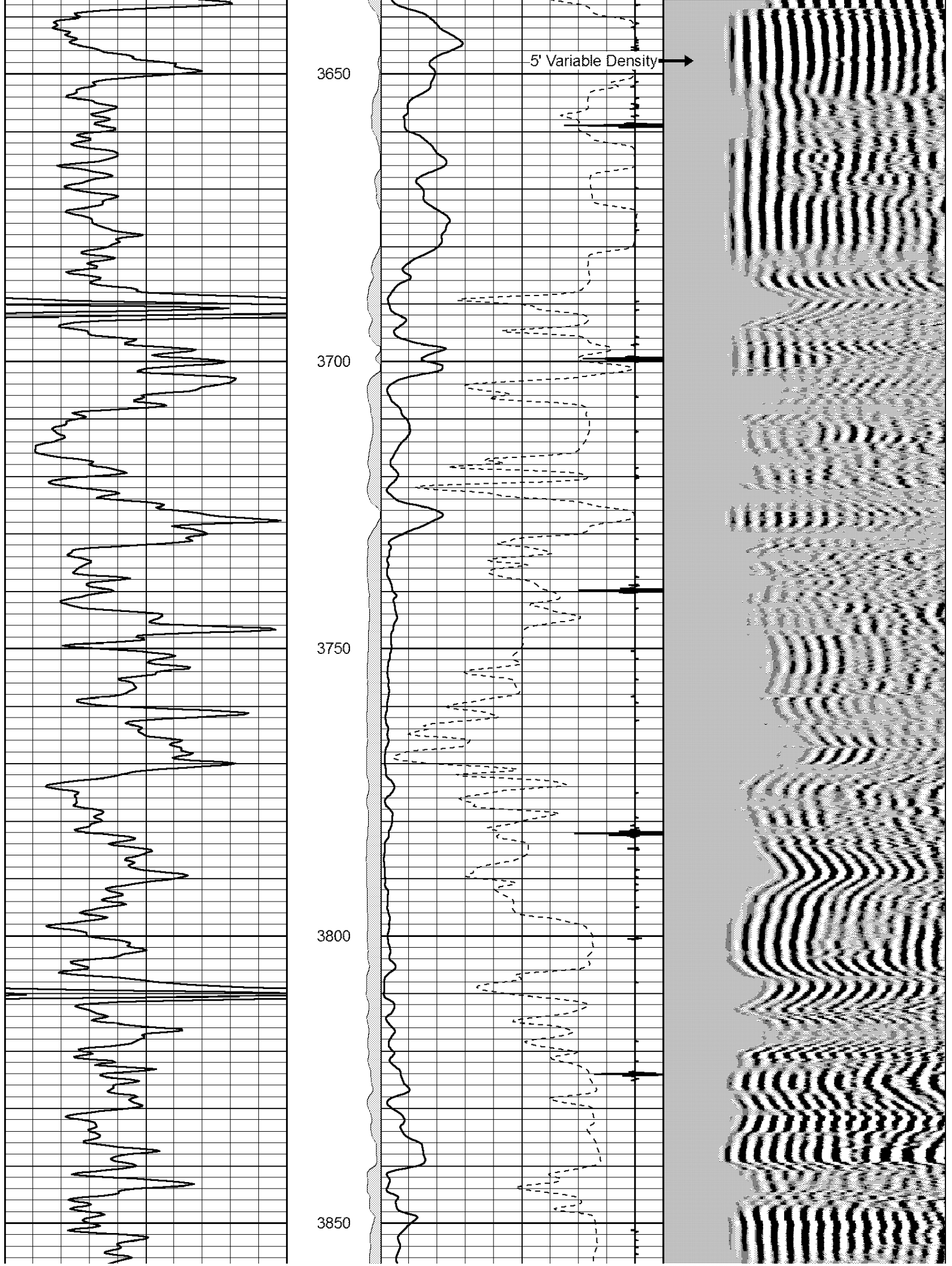
3450

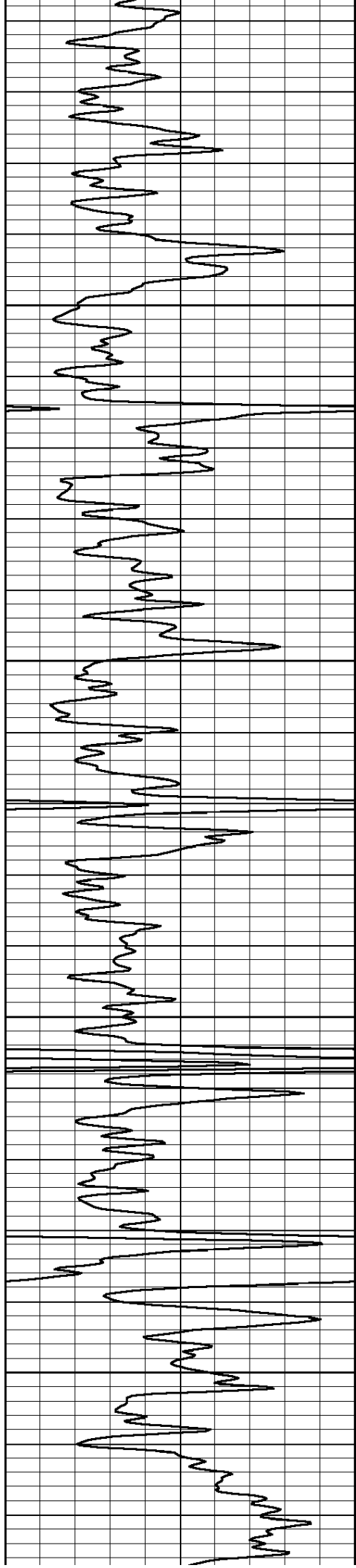
3500

3550

3600





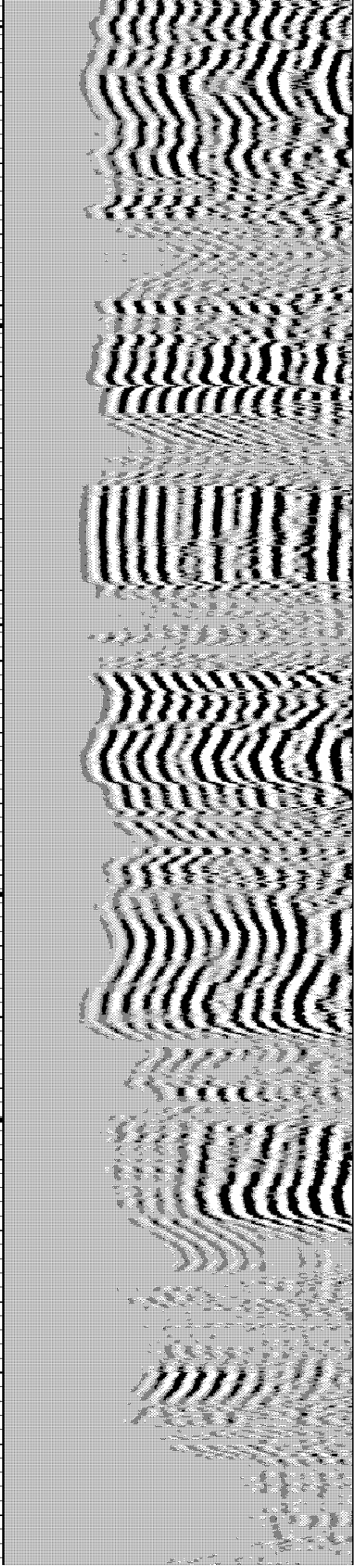
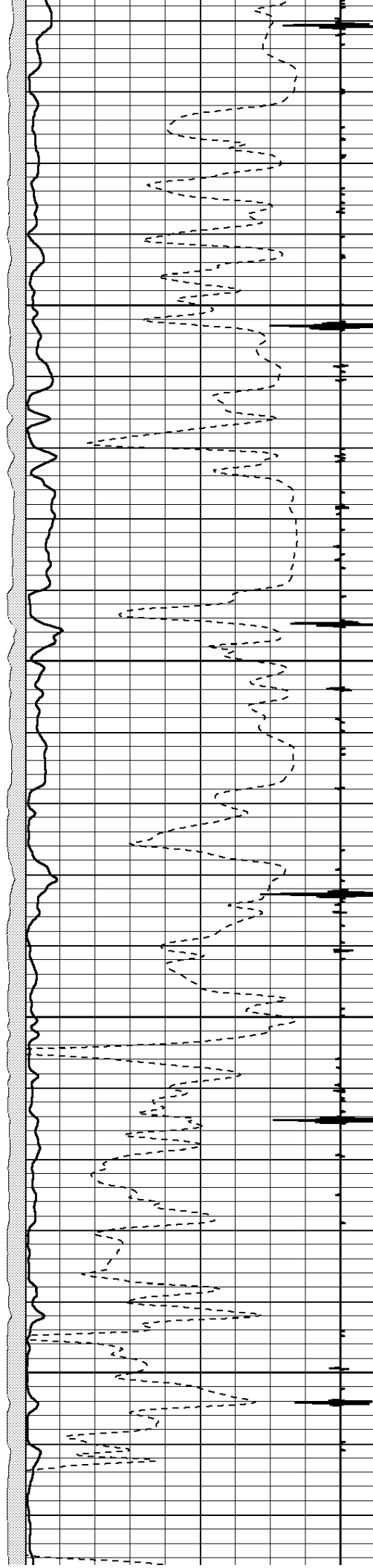


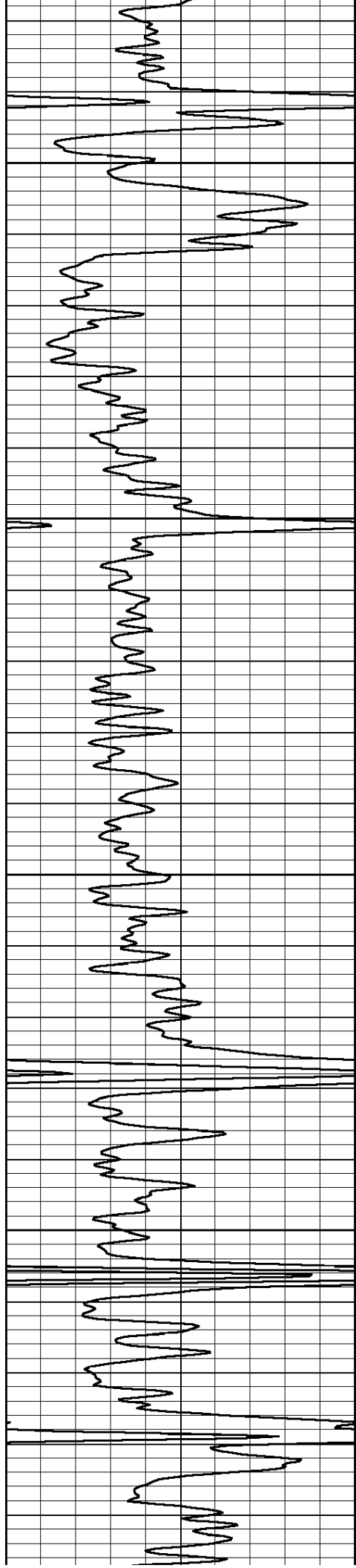
3900

3950

4000

4050





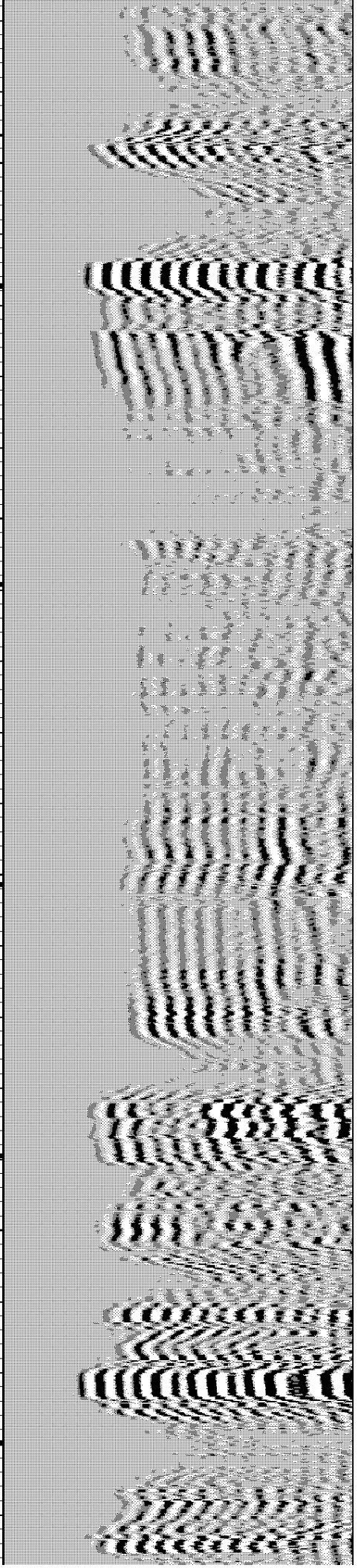
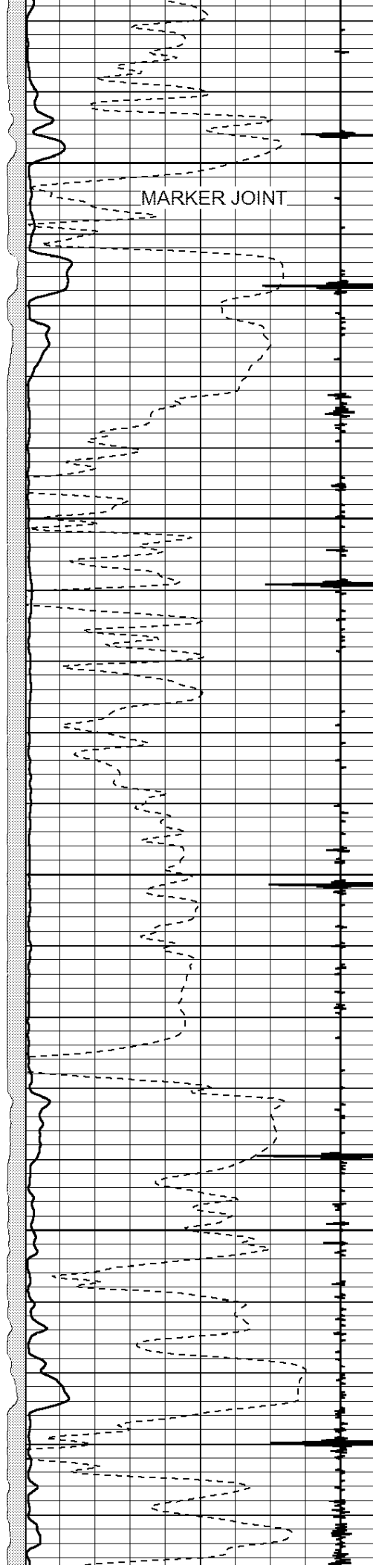
4100

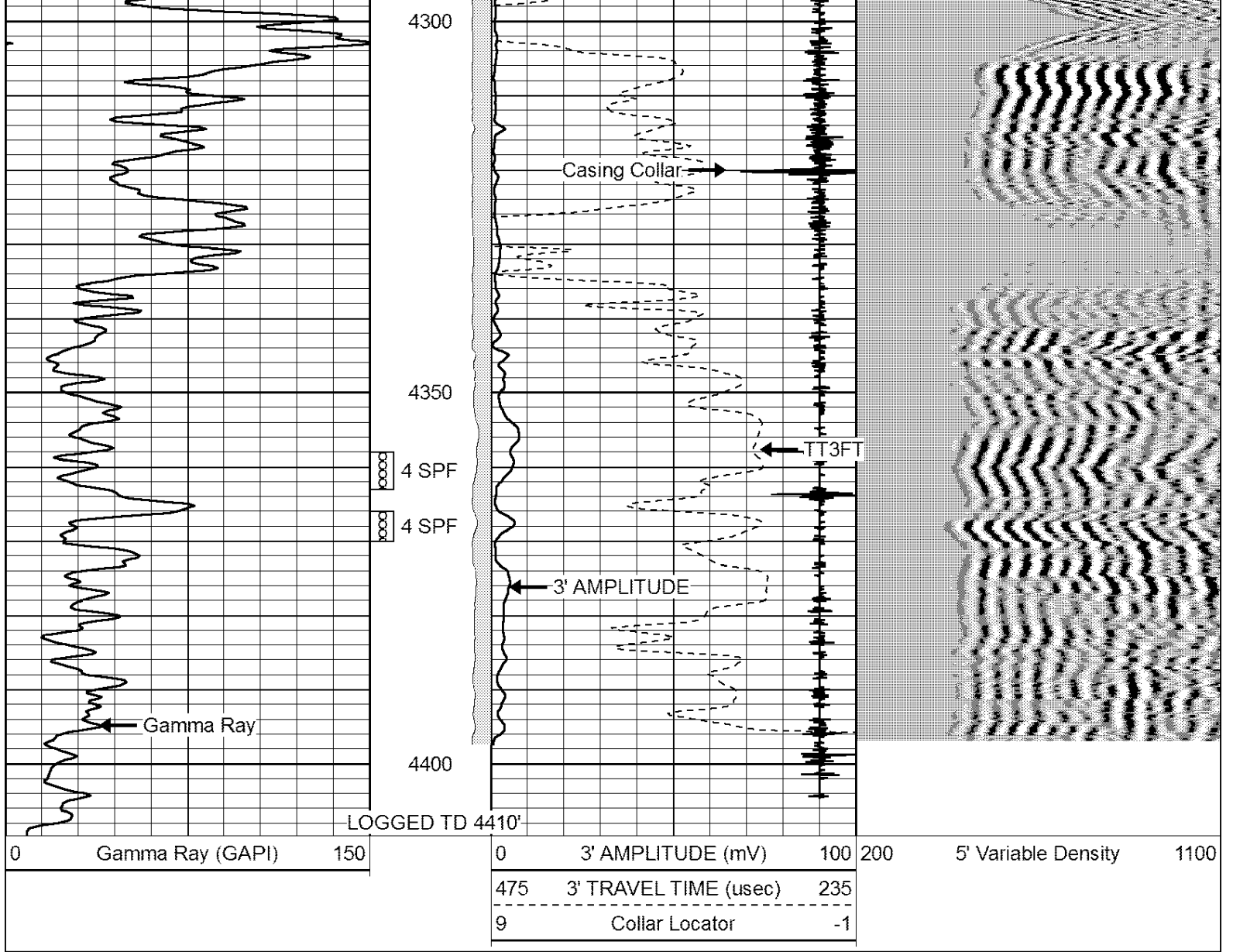
MARKER JOINT

4150

4200

4250





**Perf-Tech**  
Wireline Services, Inc.

# REPEAT SECTION

Database File: sept202109c.db  
 Dataset Pathname: pass2  
 Presentation Format: 3x5  
 Dataset Creation: Mon Sep 20 10:26:06 2021 by Log Std Casedhole 06040  
 Charted by: Depth in Feet scaled 1:240

