



DUAL INDUCTION LOG

Company PALOMINO PETROLEUM
 Well THE WORLD IS NOT ENOUGH #1
 Field WILDCAT
 County NESS State KANSAS

Location: API #: 15-135-26118-0000
 382' FSL & 140' FEL
 SEC 12 TWP 18S RGE 25W
 Permanent Datum GROUND LEVEL Elevation 2334
 Log Measured From KELLY BUSHING 5' A.G.L.
 Drilling Measured From KELLY BUSHING
 Other Services CDL/CNL ML
 Elevation K.B. 2339
 D.F. 2337
 G.L. 2334

Date	9/8/21
Run Number	ONE
Depth Driller	4477
Depth Logger	4476
Bottom Logged Interval	4474
Top Log Interval	00
Casing Driller	8 5/8" @ 211
Casing Logger	211
Bit Size	7 7/8"
Type Fluid in Hole	CHEMICAL MUD
Density / Viscosity	9.4/55
pH / Fluid Loss	10.0/6.0
Source of Sample	FLOWLINE
Rm @ Meas. Temp	.6@ 70F
Rmf @ Meas. Temp	.45@ 70F
Rmc @ Meas. Temp	.72 @ 70F
Source of Rmf / Rmc	MEASURED
Rm @ BHT	.35@ 120F
Time Circulation Stopped	2 HOURS
Time Logger on Bottom	////
Maximum Recorded Temperature	120F
Equipment Number	1523
Location	HAYS, KANSAS
Recorded By	GUS PFANENSTIEL
Witnessed By	RYAN SEIB

<<< Fold Here >>>

All interpretations are opinions based on inferences from electrical or other measurements and we cannot and do not guarantee the accuracy or correctness of any interpretation, and we shall not, except in the case of gross or willful negligence on our part, be liable or responsible for any loss, costs, damages, or expenses incurred or sustained by anyone resulting from any interpretation made by any of our officers, agents or employees. These interpretations are also subject to our general terms and conditions set out in our current Price Schedule.

Comments

THANK YOU FOR USING ELI WIRELINE, HAYS, KS. (785) 628-6395
 DIRECTIONS:NESS CITY WEST TO L RD., NORTH 4 MILES,
 WEST INTO.

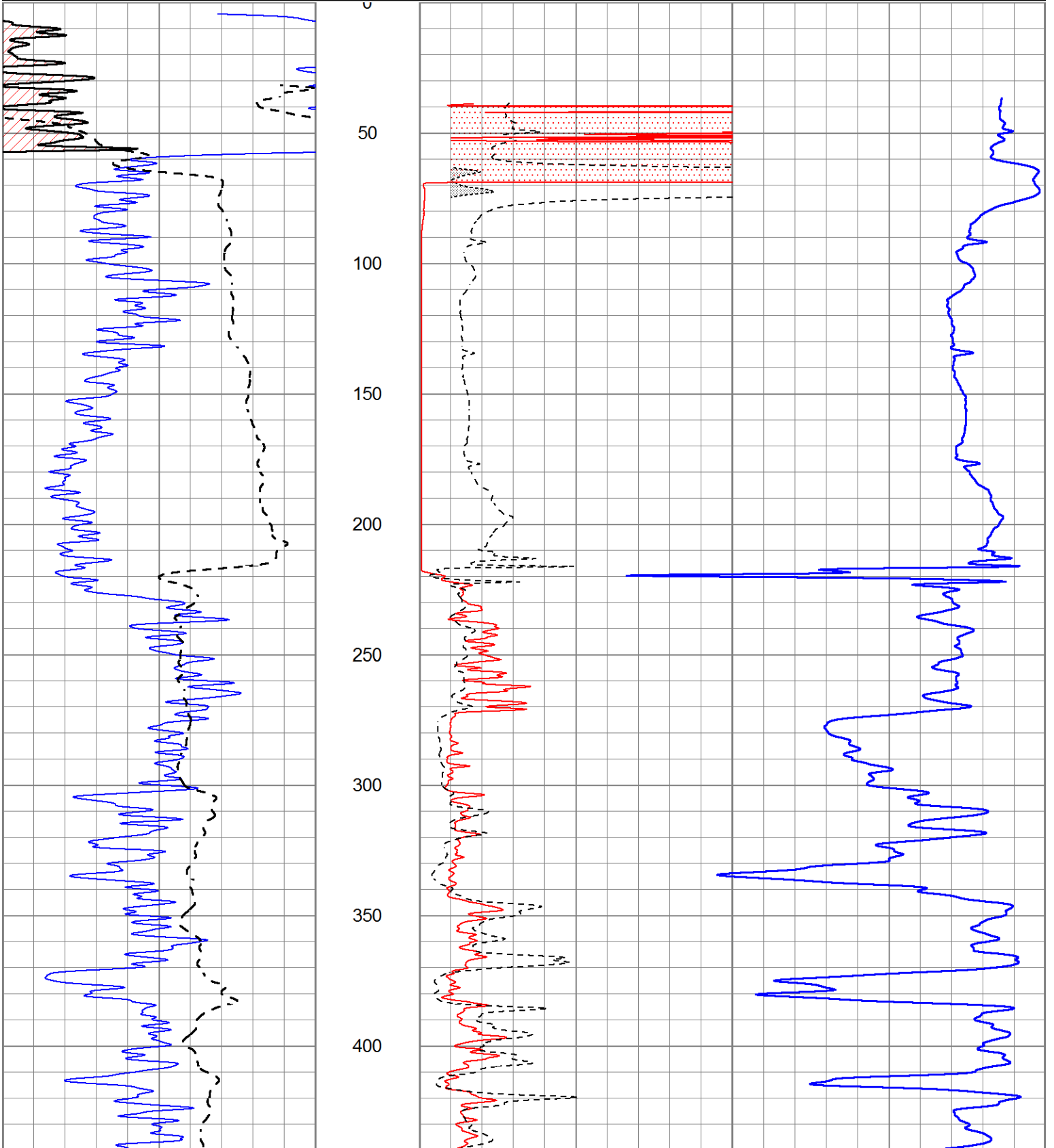


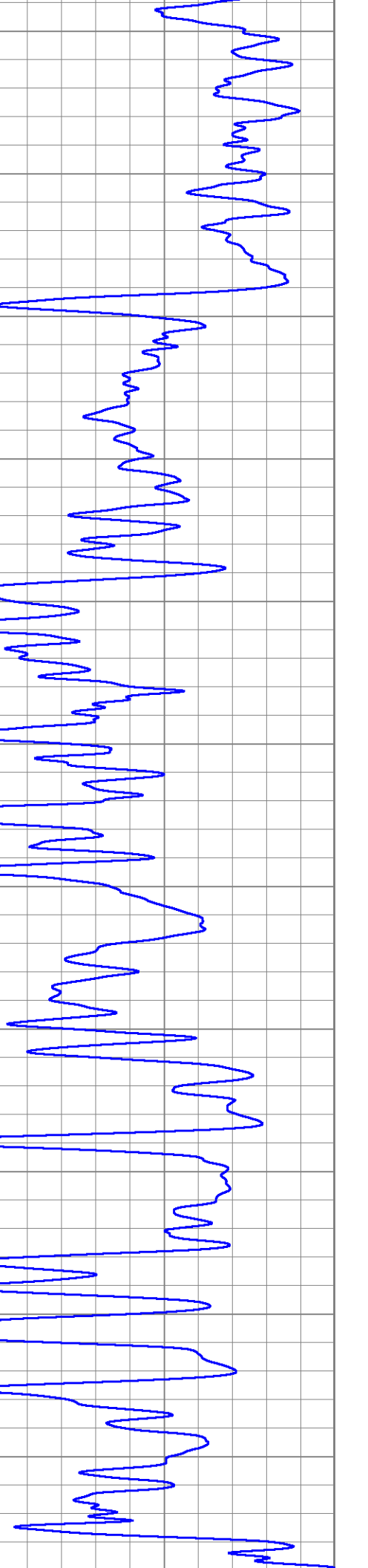
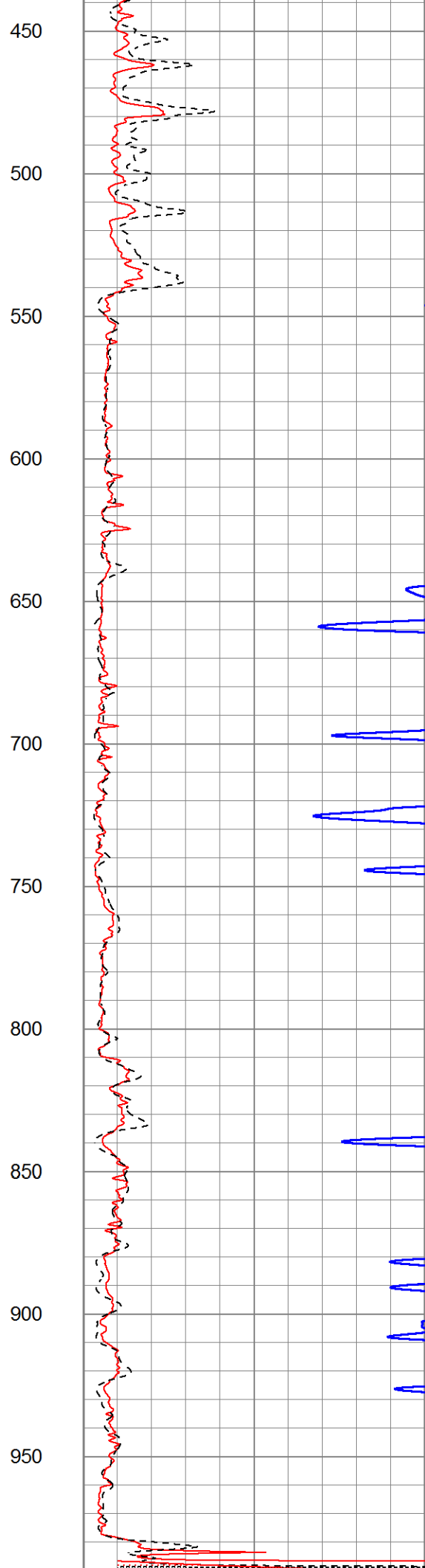
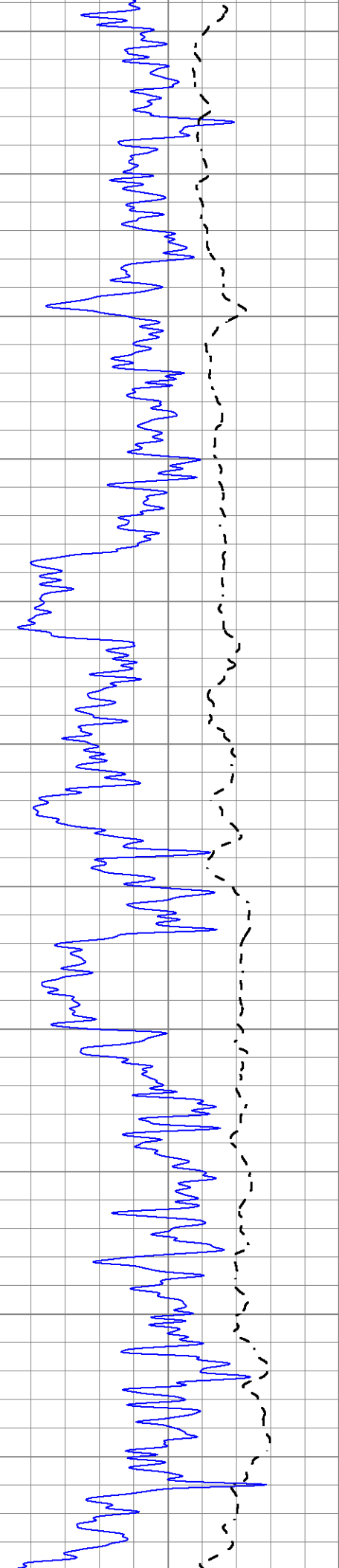
MAIN PASS

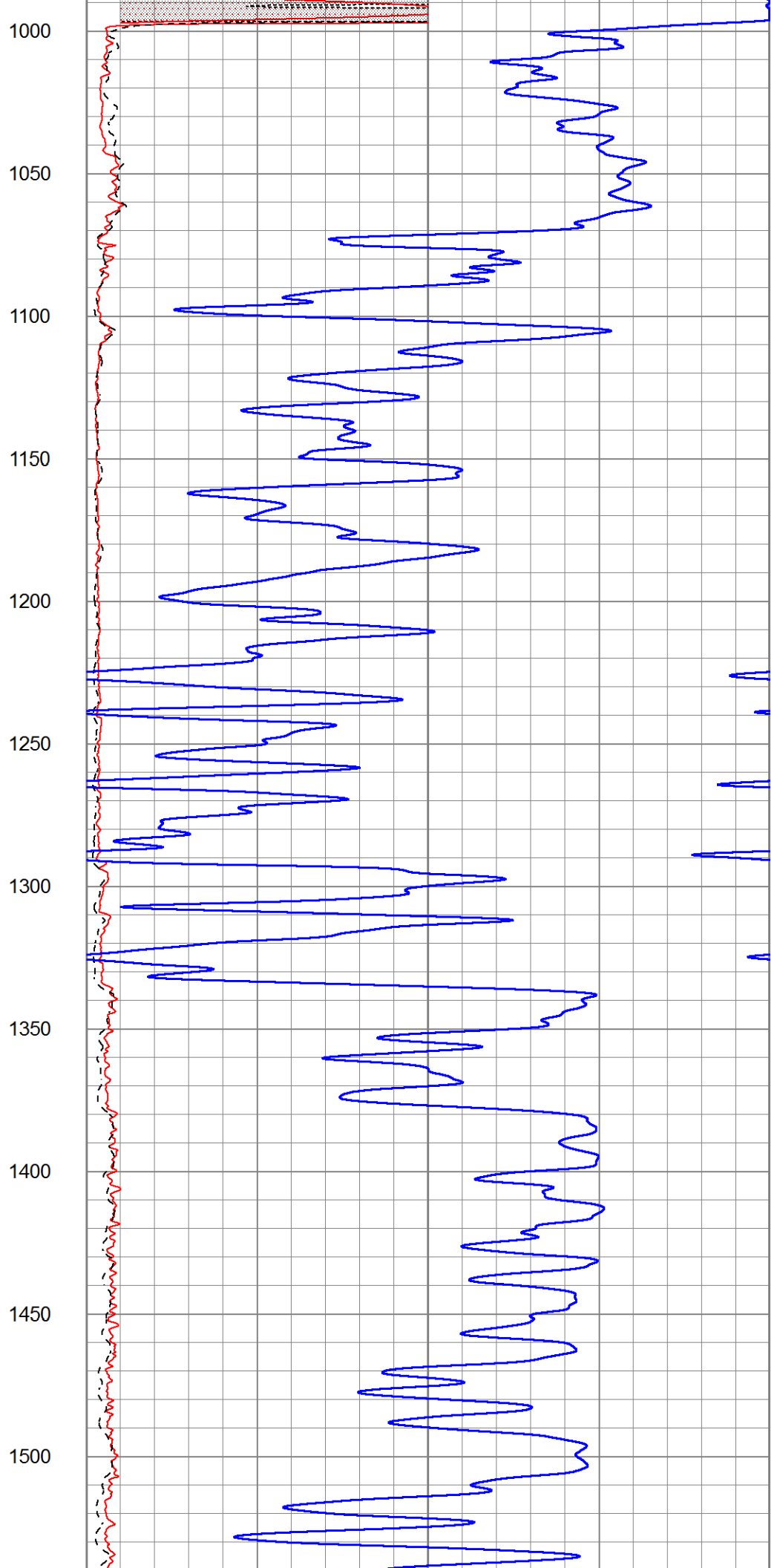
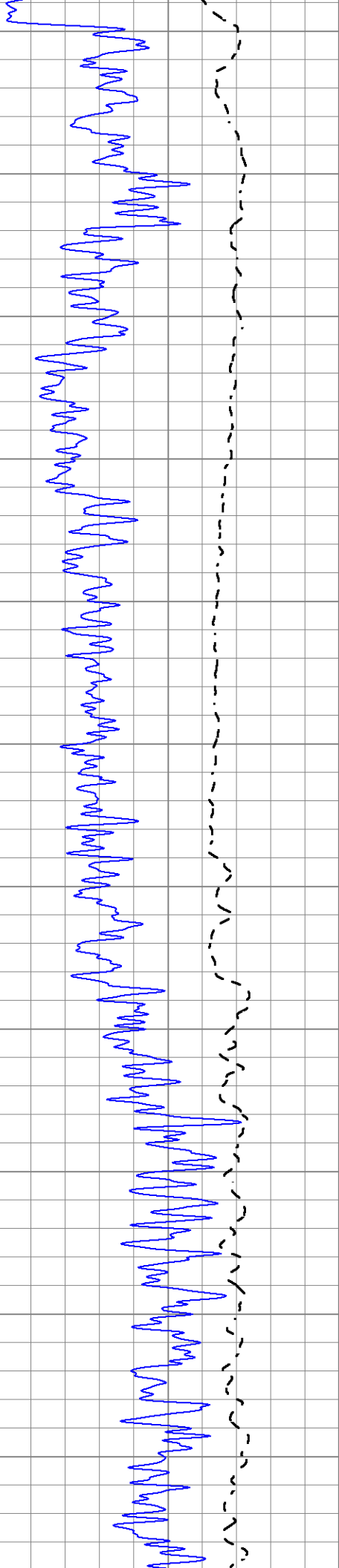
Database File 5624ddn.db
 Dataset Pathname pass3.1
 Presentation Format _dil2
 Dataset Creation Wed Sep 08 15:52:14 2021
 Charted by Depth in Feet scaled 1:600

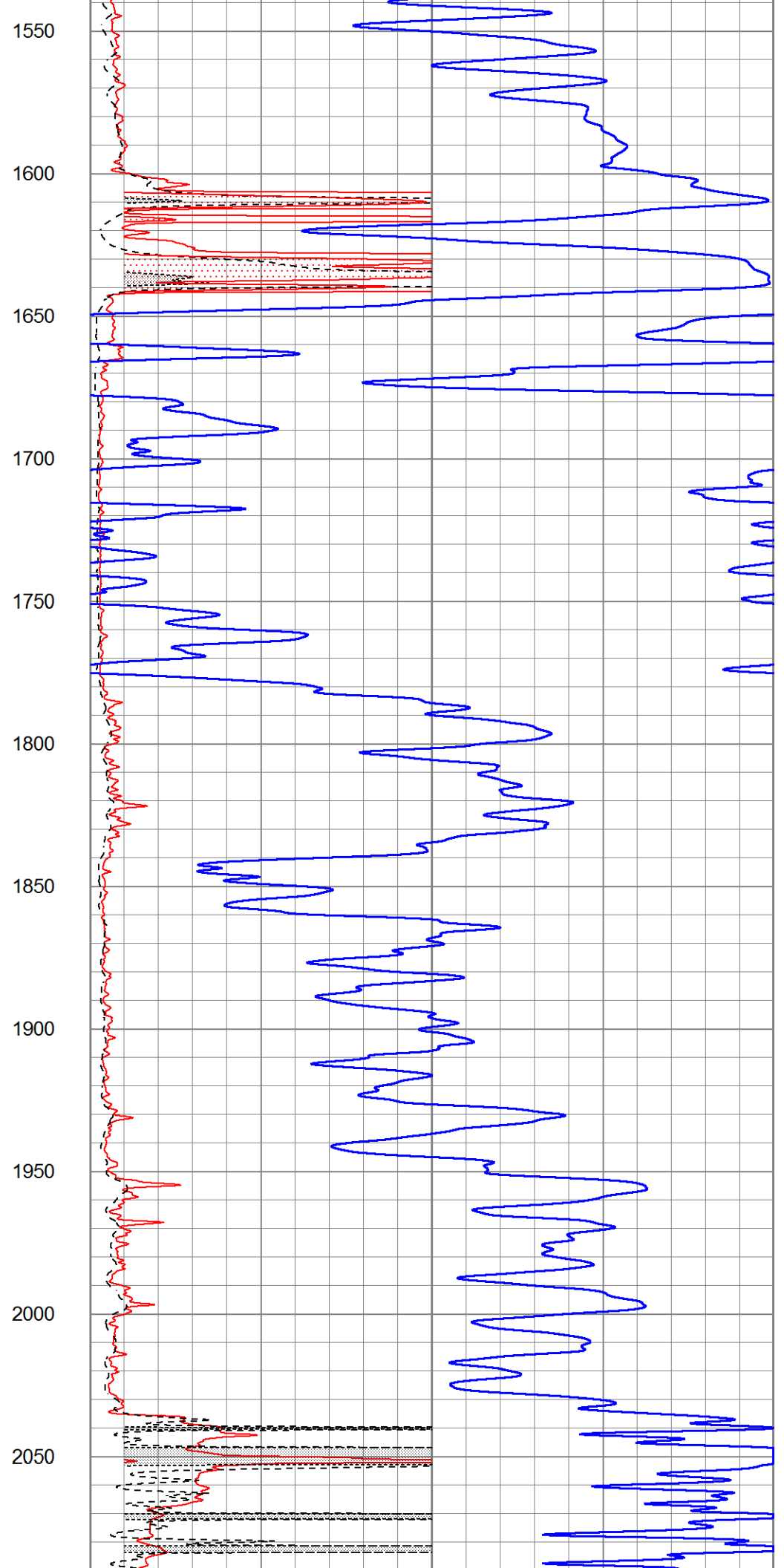
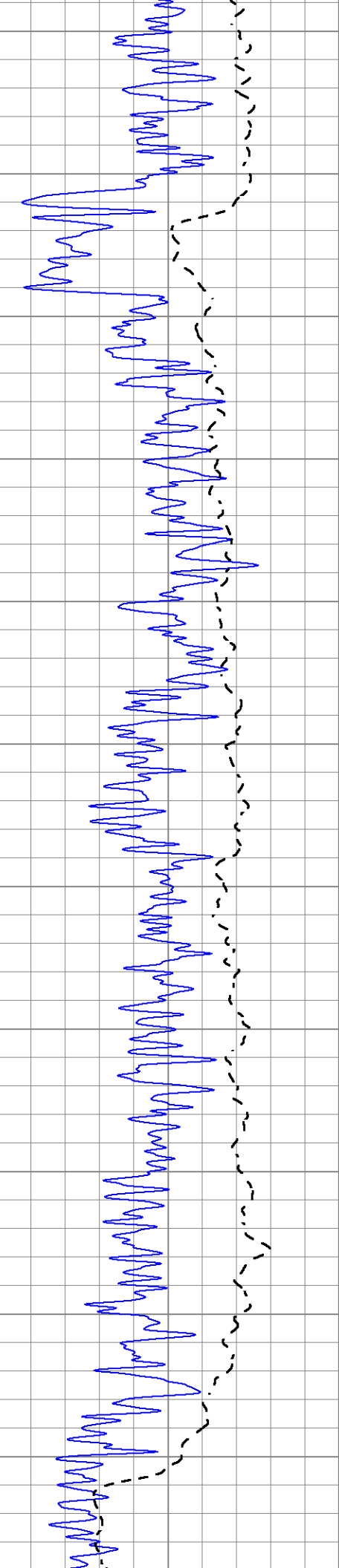
0	Gamma Ray (GAPI)	150
-100	SP (mV)	100

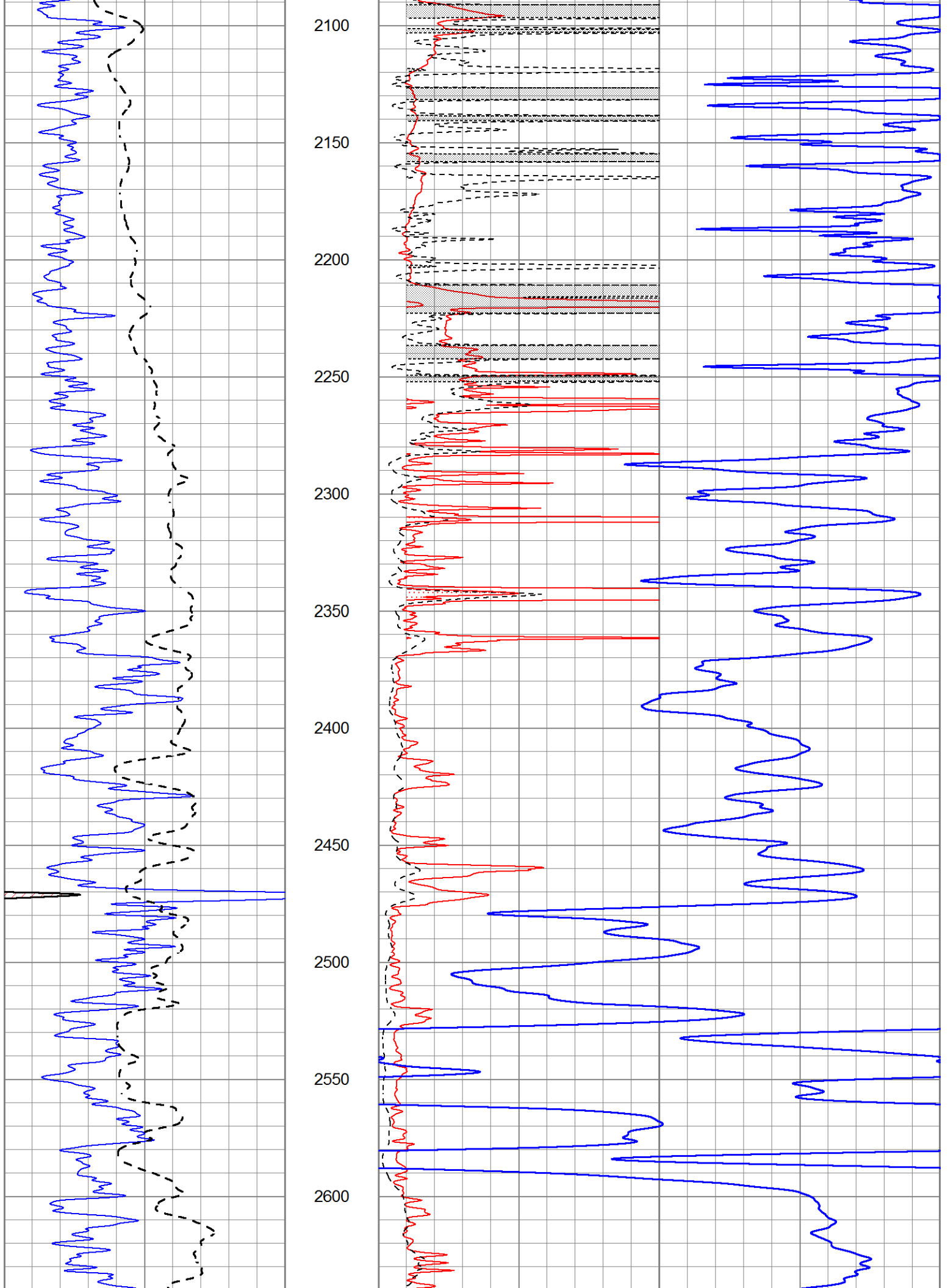
1000	CILD (mmho/m)	0
0	RLL3 (Ohm-m)	50
0	RILD (Ohm-m)	50
50	RILD X10 (Ohm-m)	500
50	RLL3 X10 (Ohm-m)	500

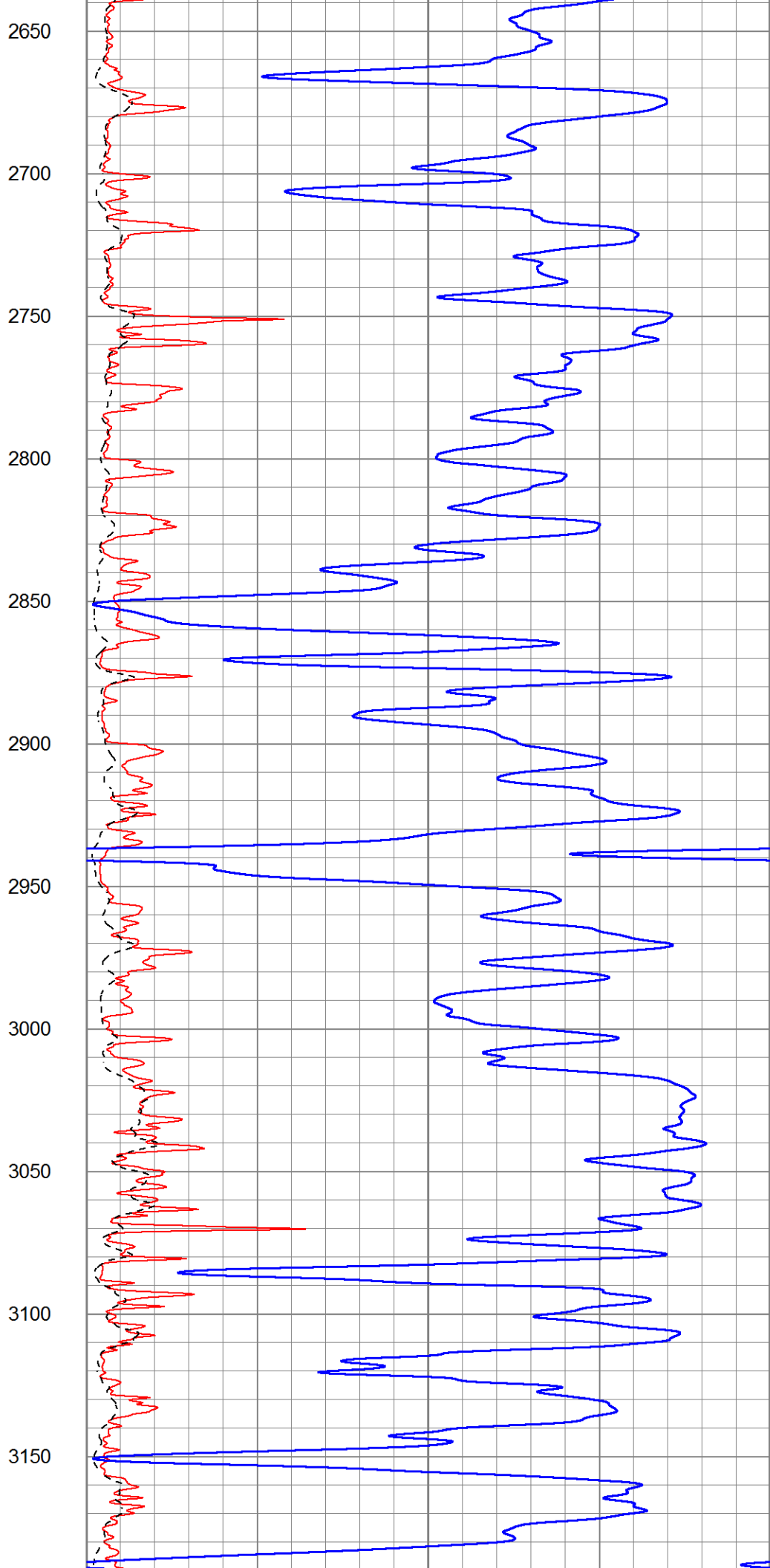
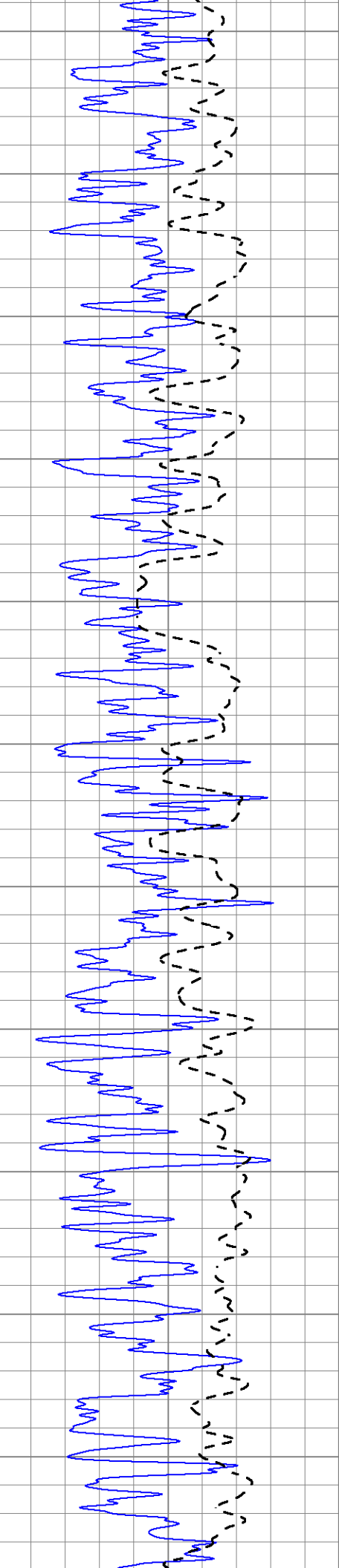


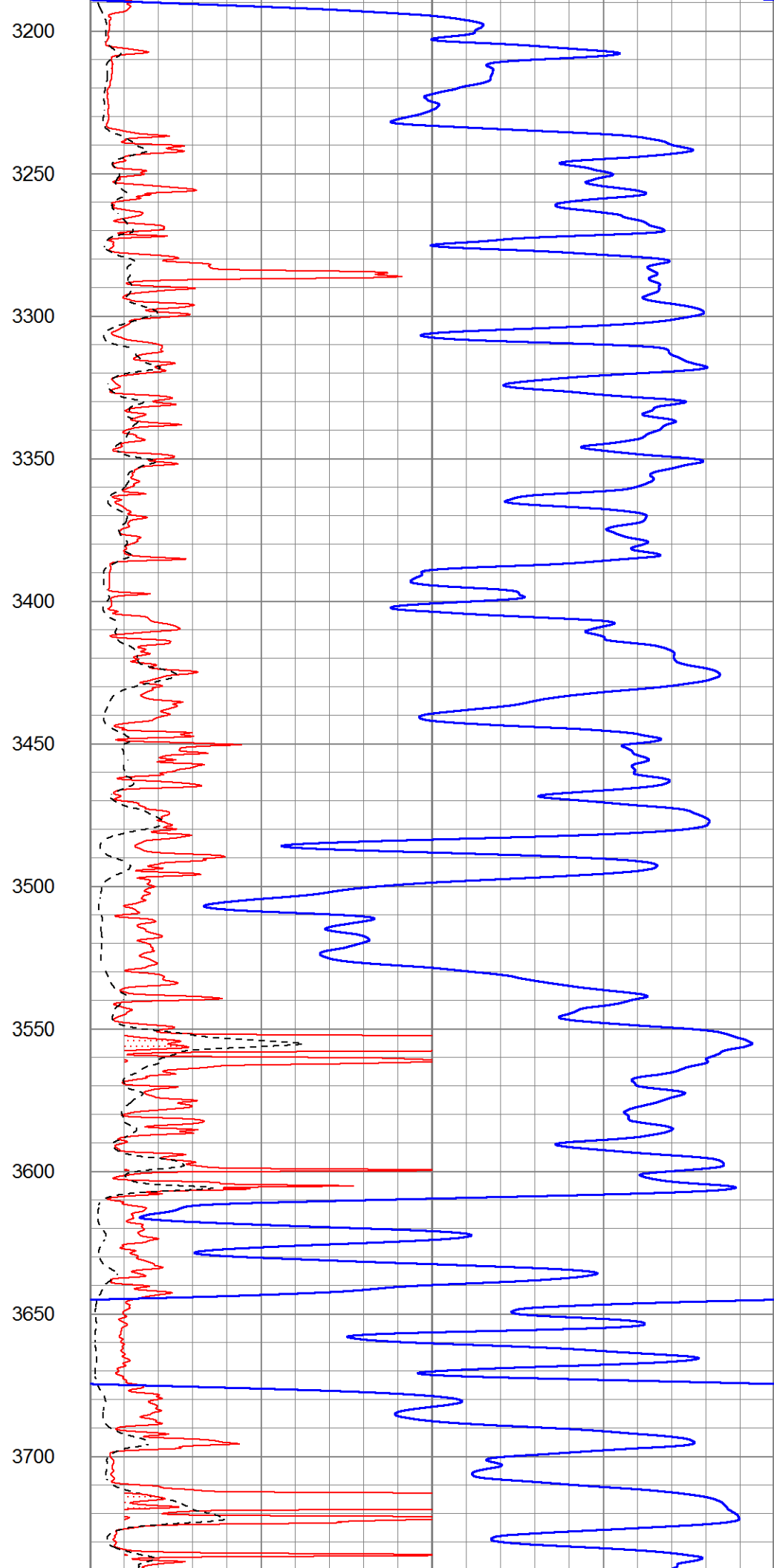
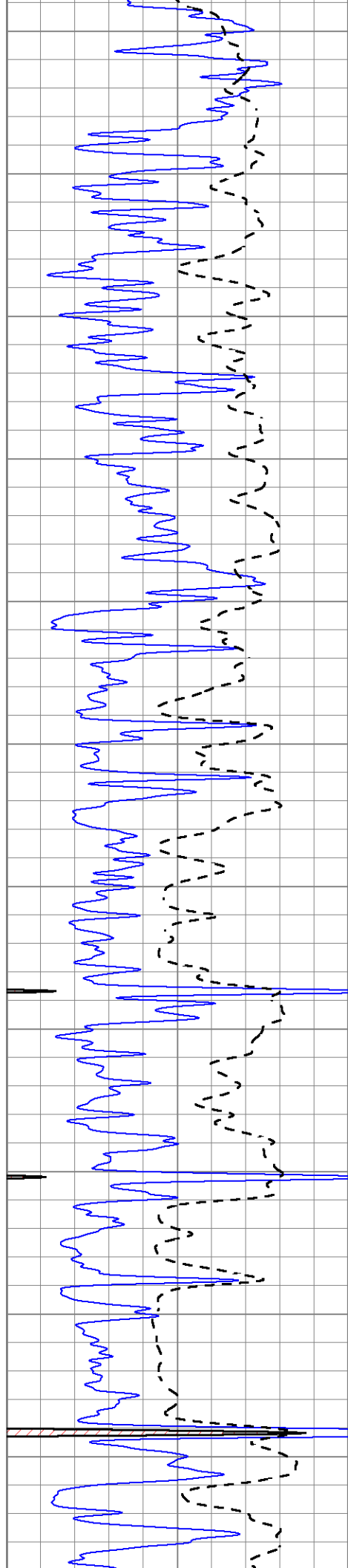


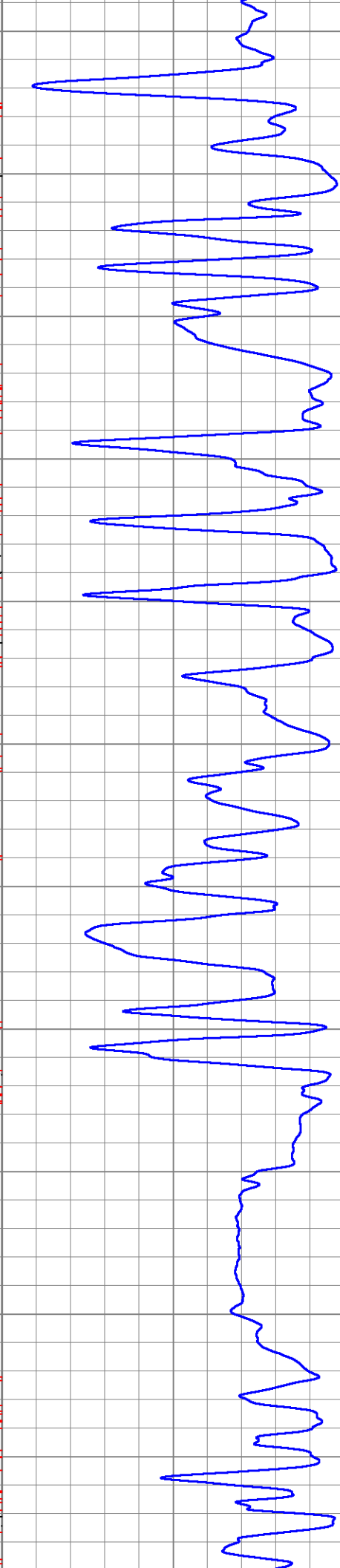
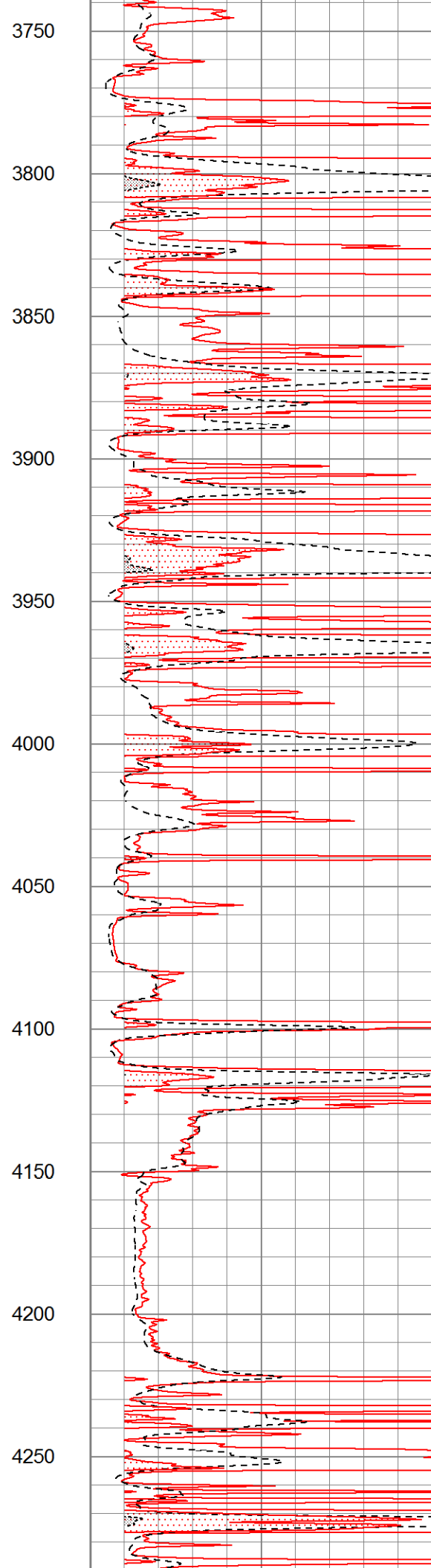
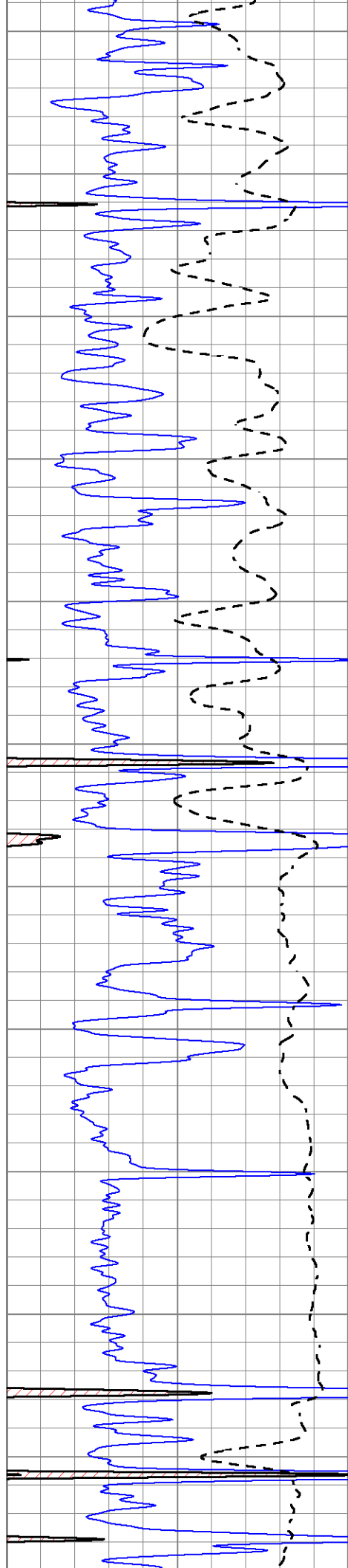


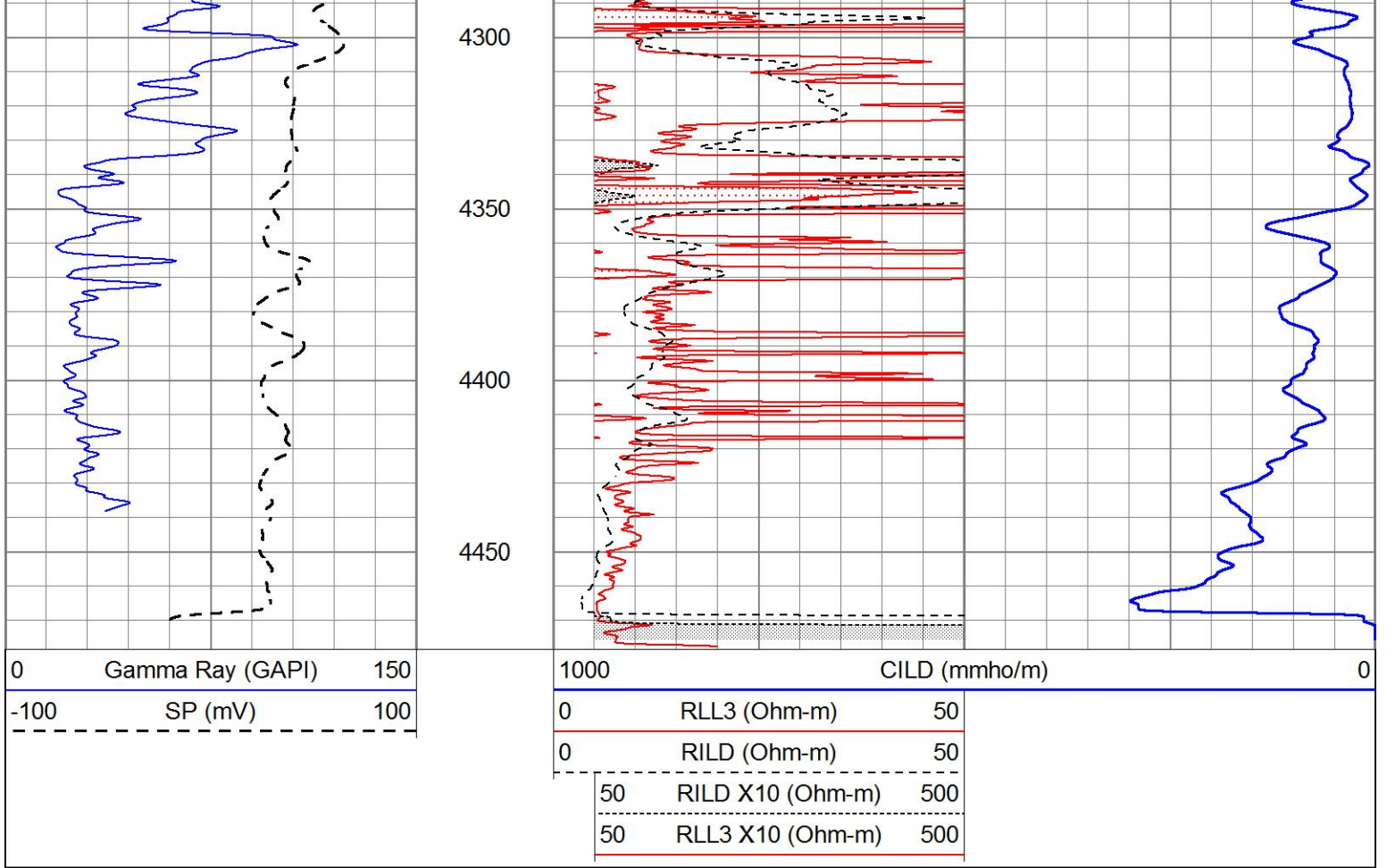










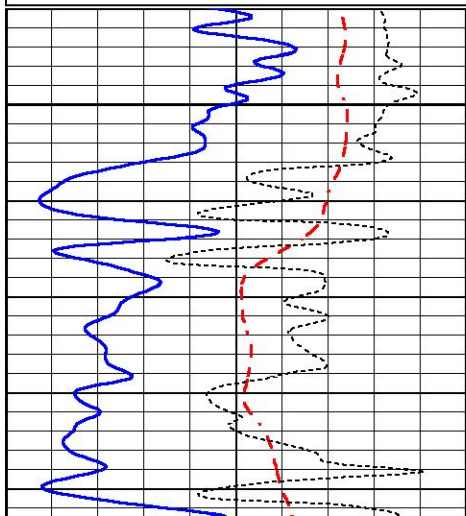


MAIN PASS

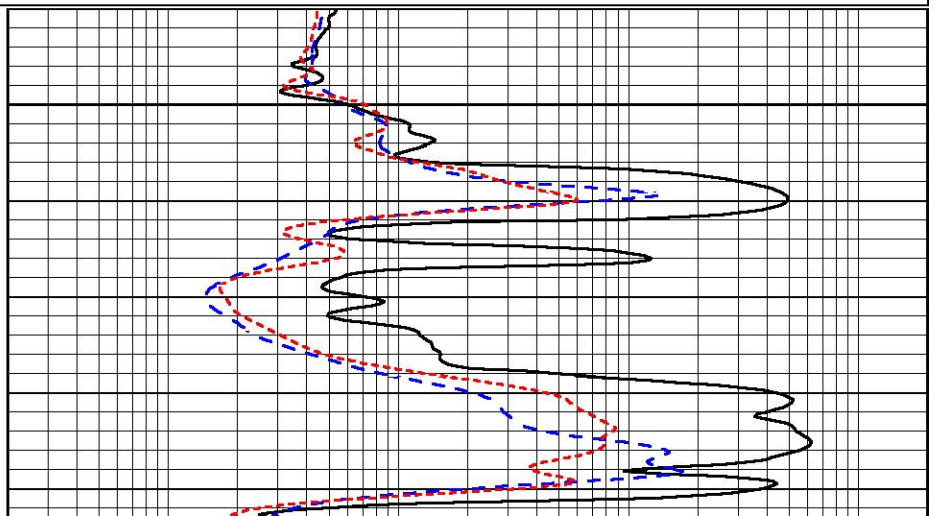
Database File 5624ddn.db
 Dataset Pathname pass3.1
 Presentation Format _dil
 Dataset Creation Wed Sep 08 15:52:14 2021
 Charted by Depth in Feet scaled 1:240

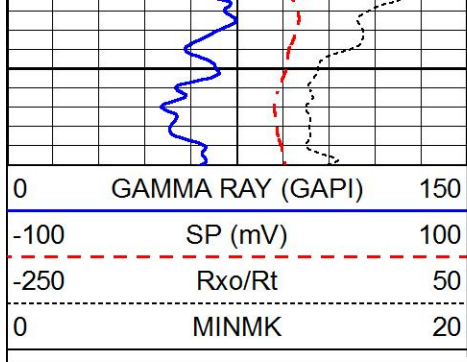
0	GAMMA RAY (GAPI)	150
-100	SP (mV)	100
-250	Rxo/Rt	50
0	MINMK	20

0.2	SHALLOW GUARD (Ohm-m)	2000
0.2	DEEP INDUCTION (Ohm-m)	2000
0.2	MEDIUM INDUCTION (Ohm-m)	2000

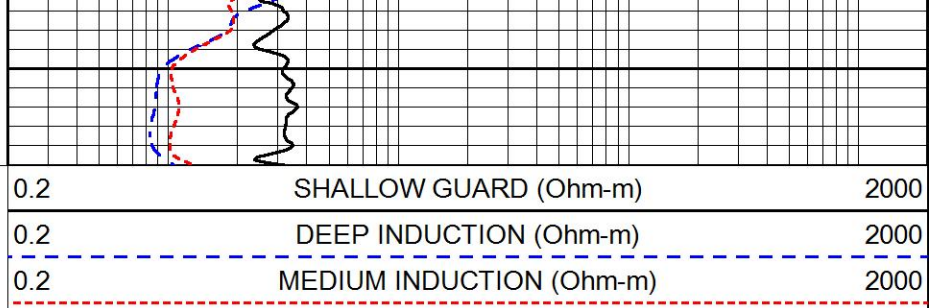


1600



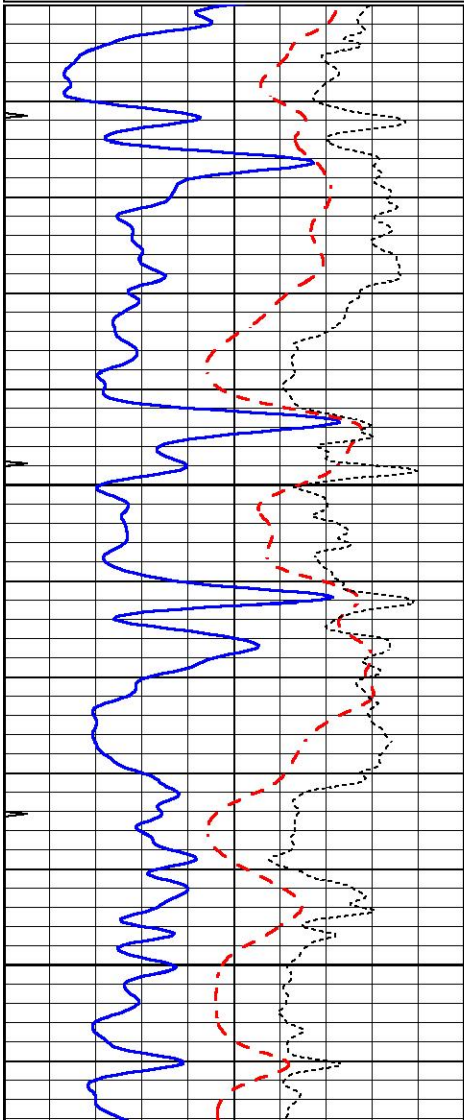
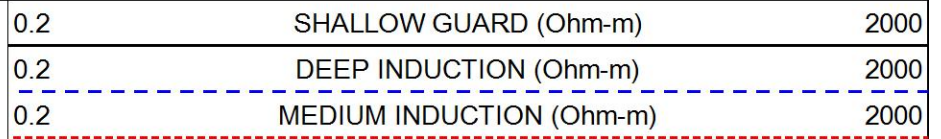
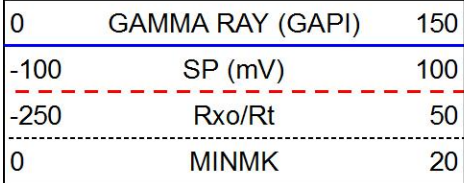


1650



MAIN PASS

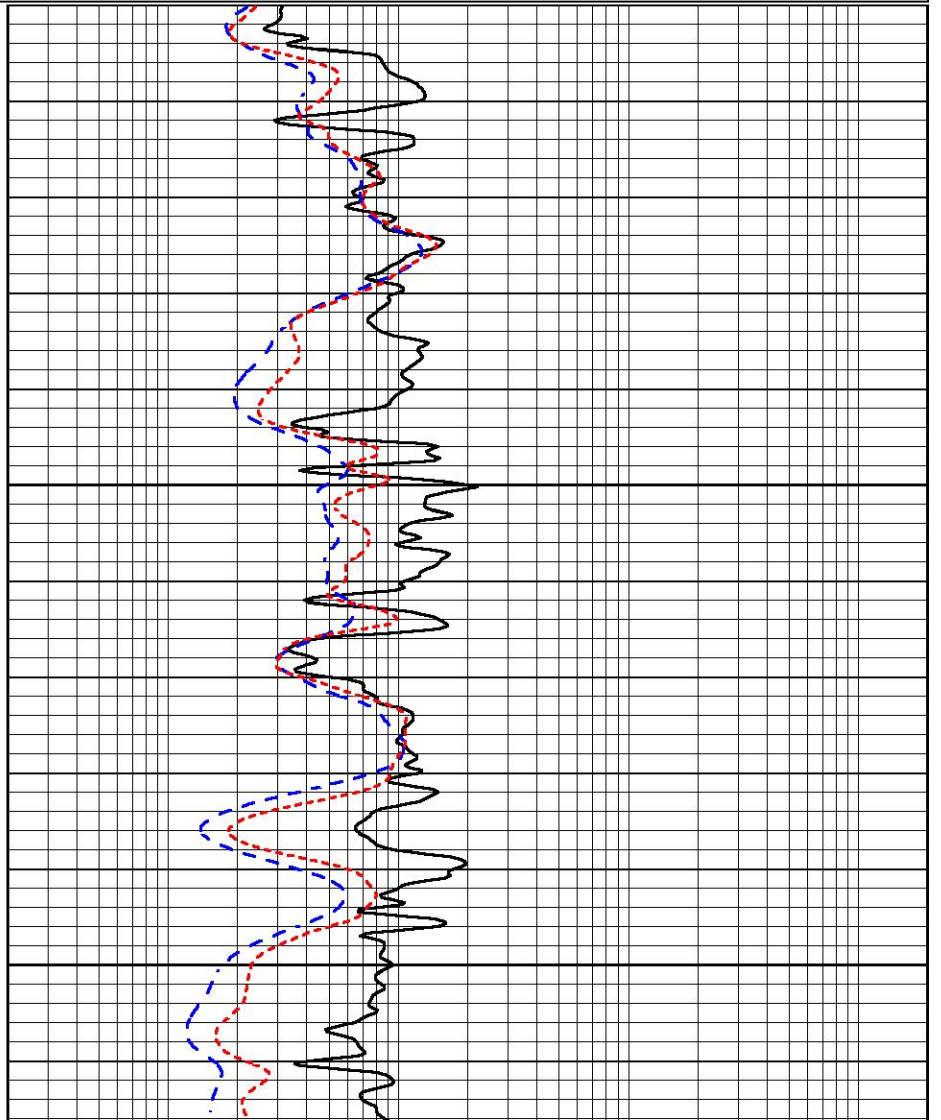
Database File 5624ddn.db
 Dataset Pathname pass3.1
 Presentation Format _dil
 Dataset Creation Wed Sep 08 15:52:14 2021
 Charted by Depth in Feet scaled 1:240

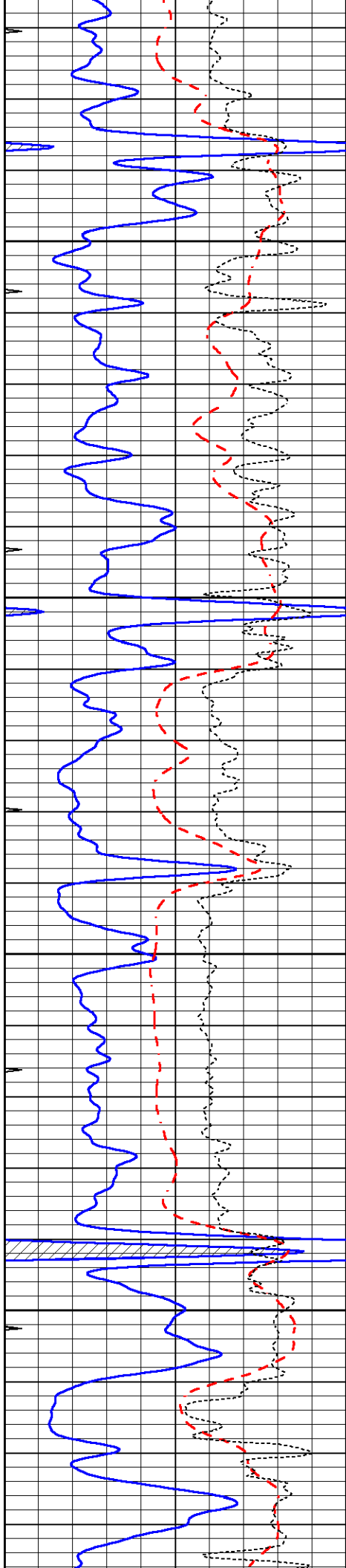


3400

3450

3500



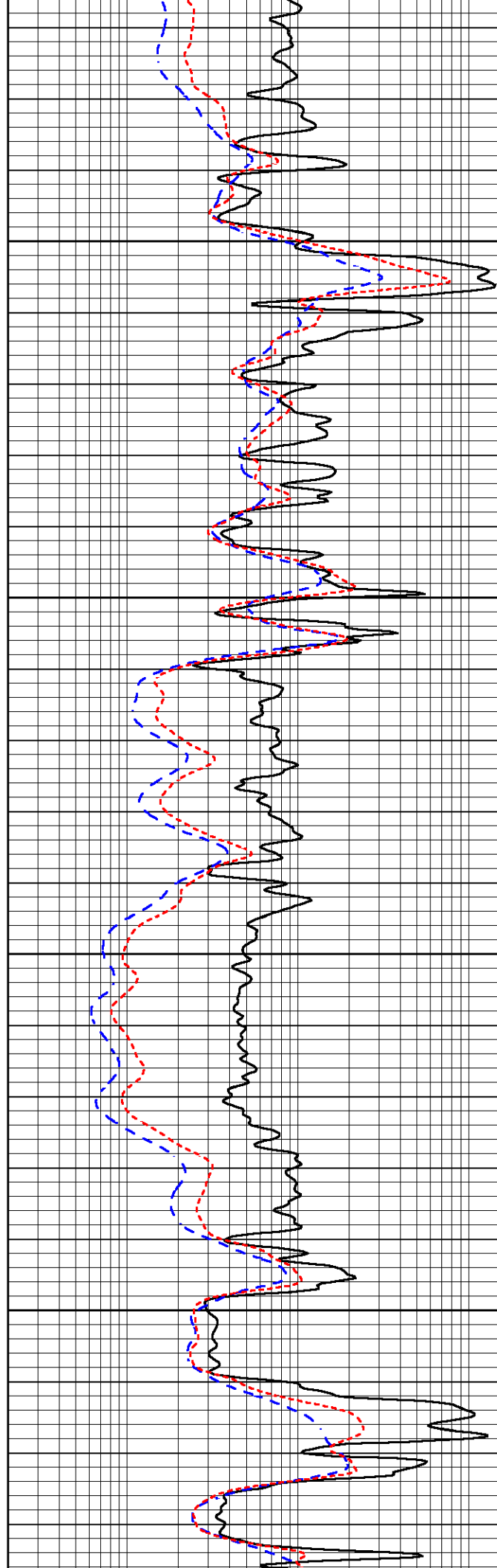


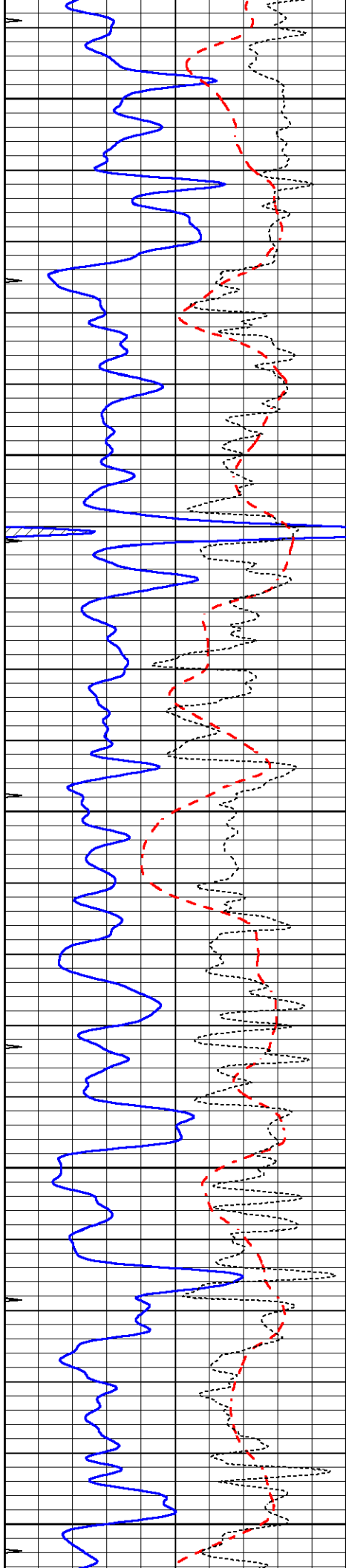
3550

3600

3650

3700





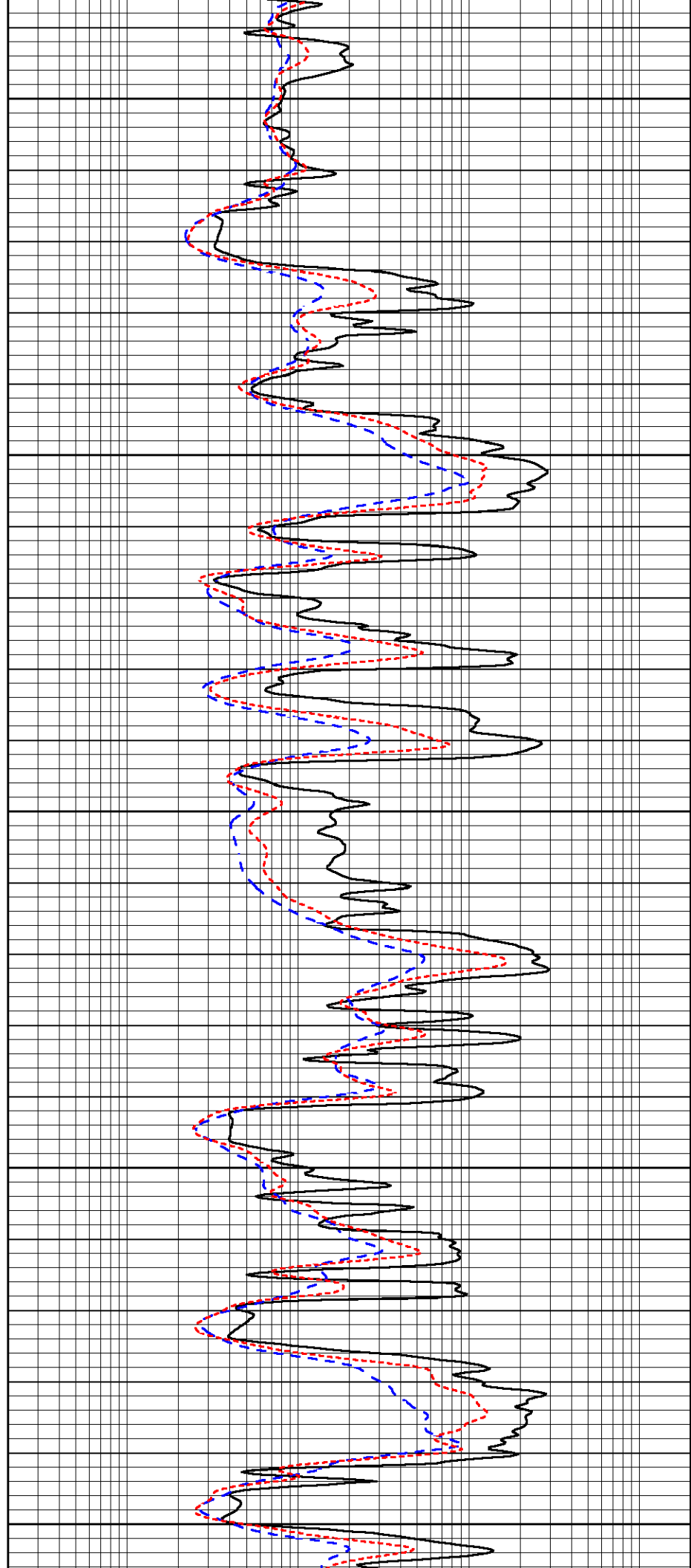
3750

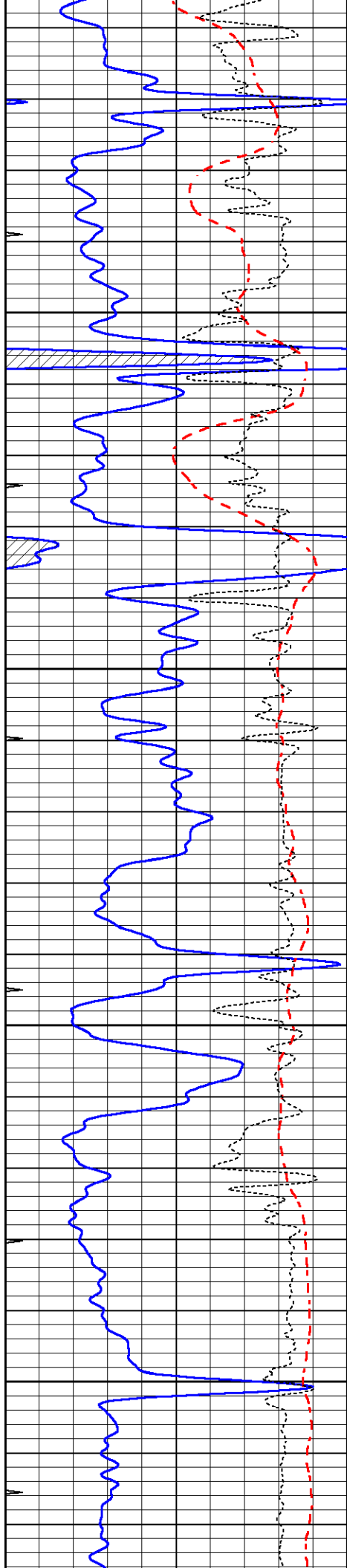
3800

3850

3900

3950



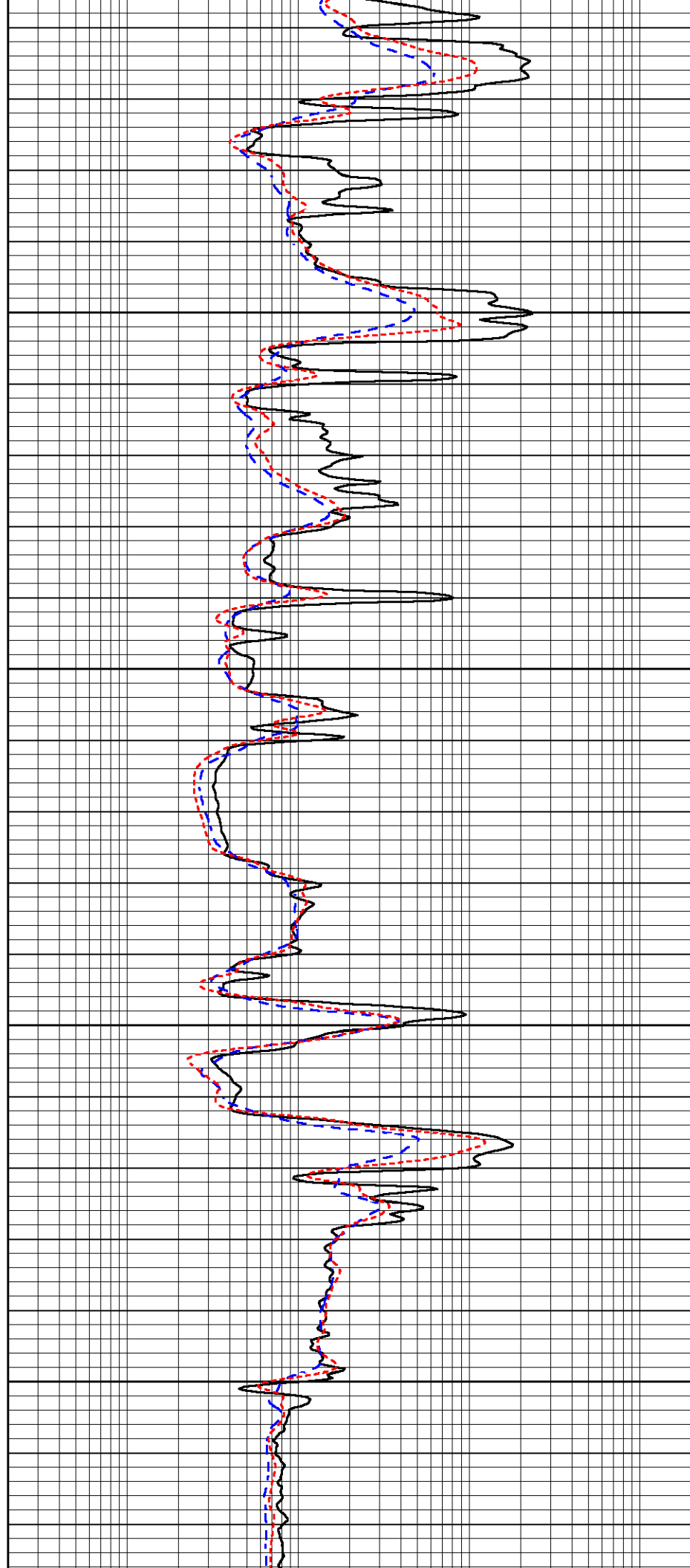


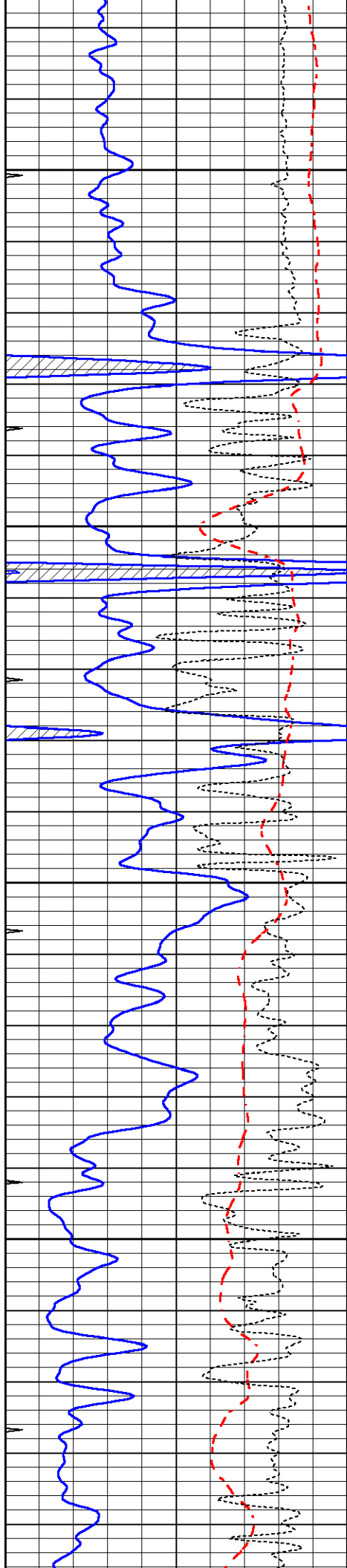
4000

4050

4100

4150



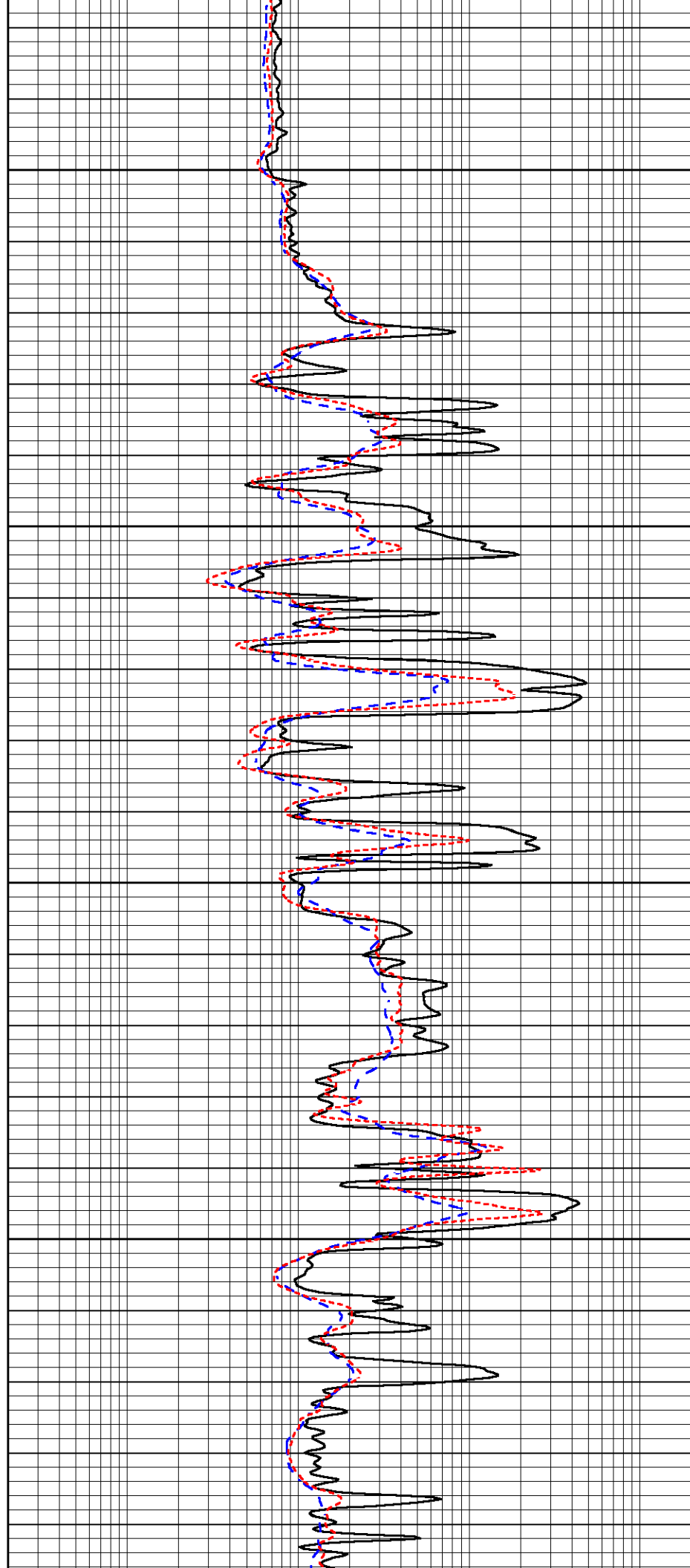


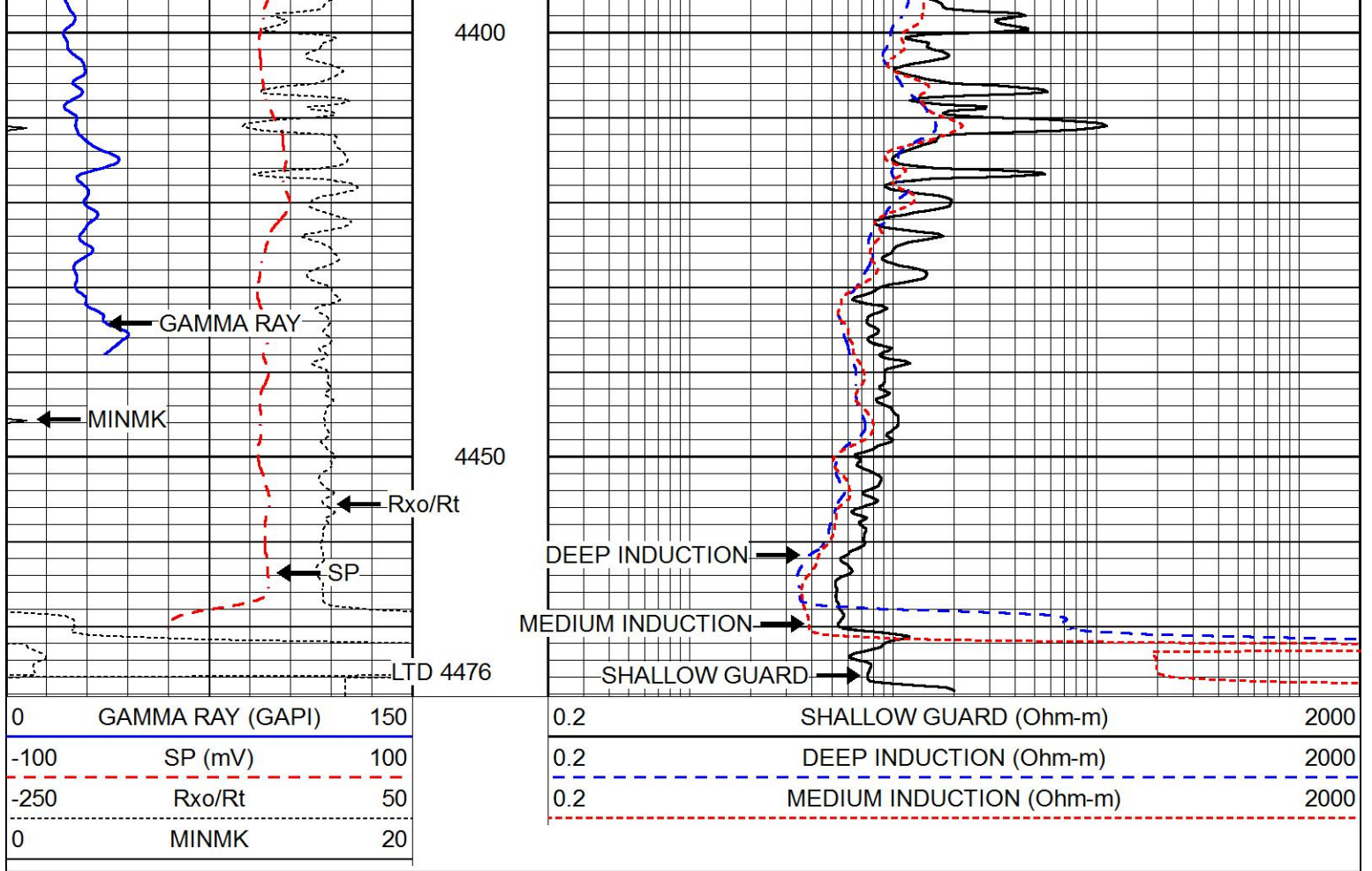
4200

4250

4300

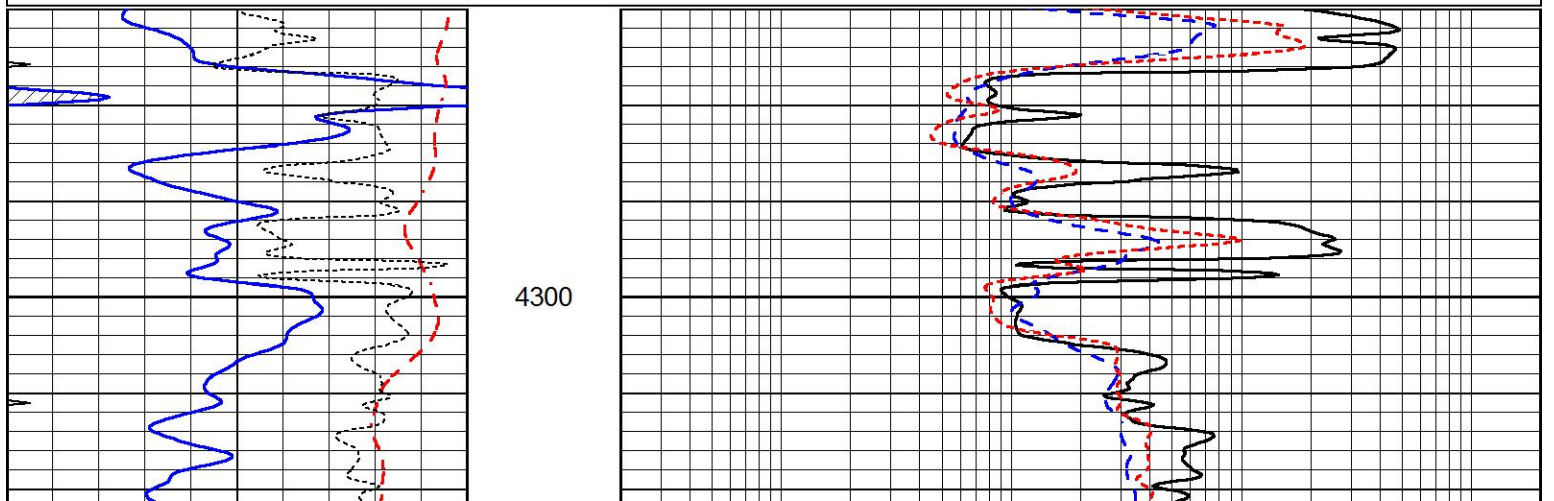
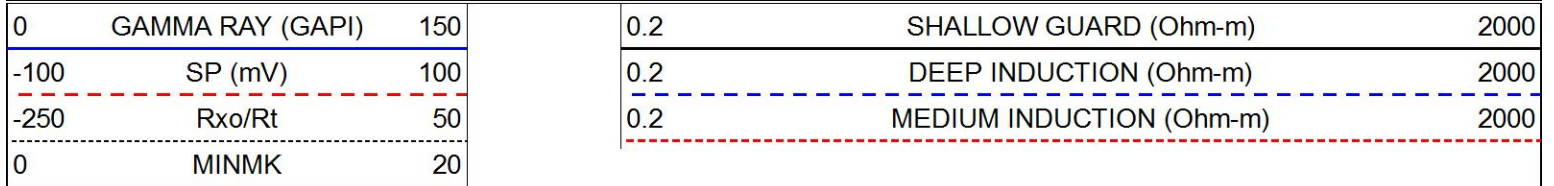
4350

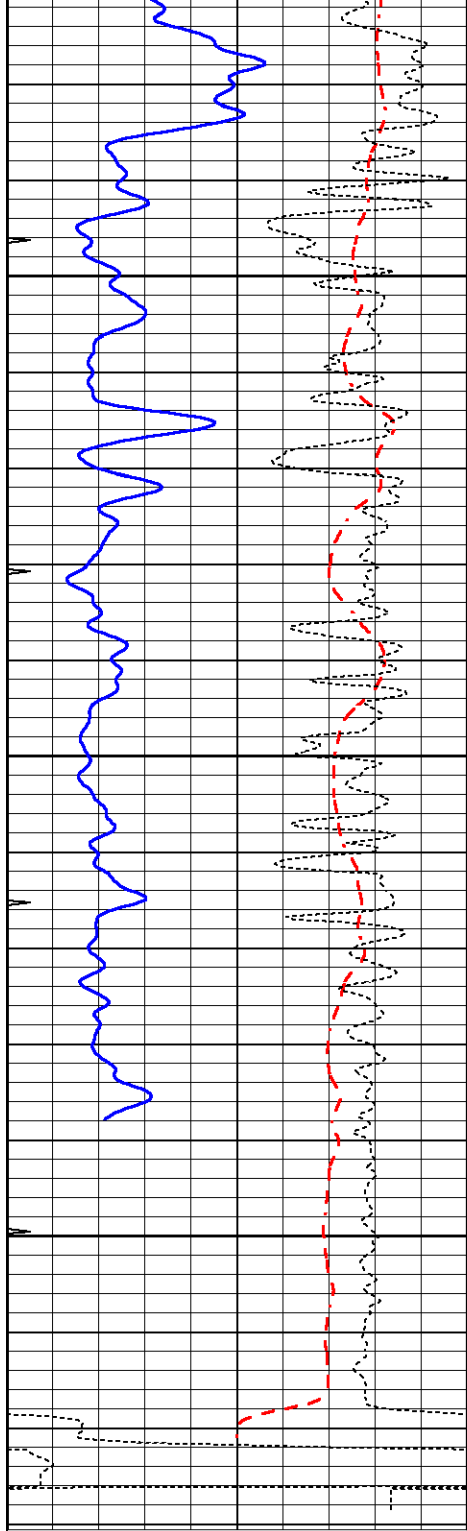




REPEAT SECTION

Database File 5624ddn.db
 Dataset Pathname pass2RP
 Presentation Format _dil
 Dataset Creation Wed Sep 08 15:33:32 2021
 Charted by Depth in Feet scaled 1:240



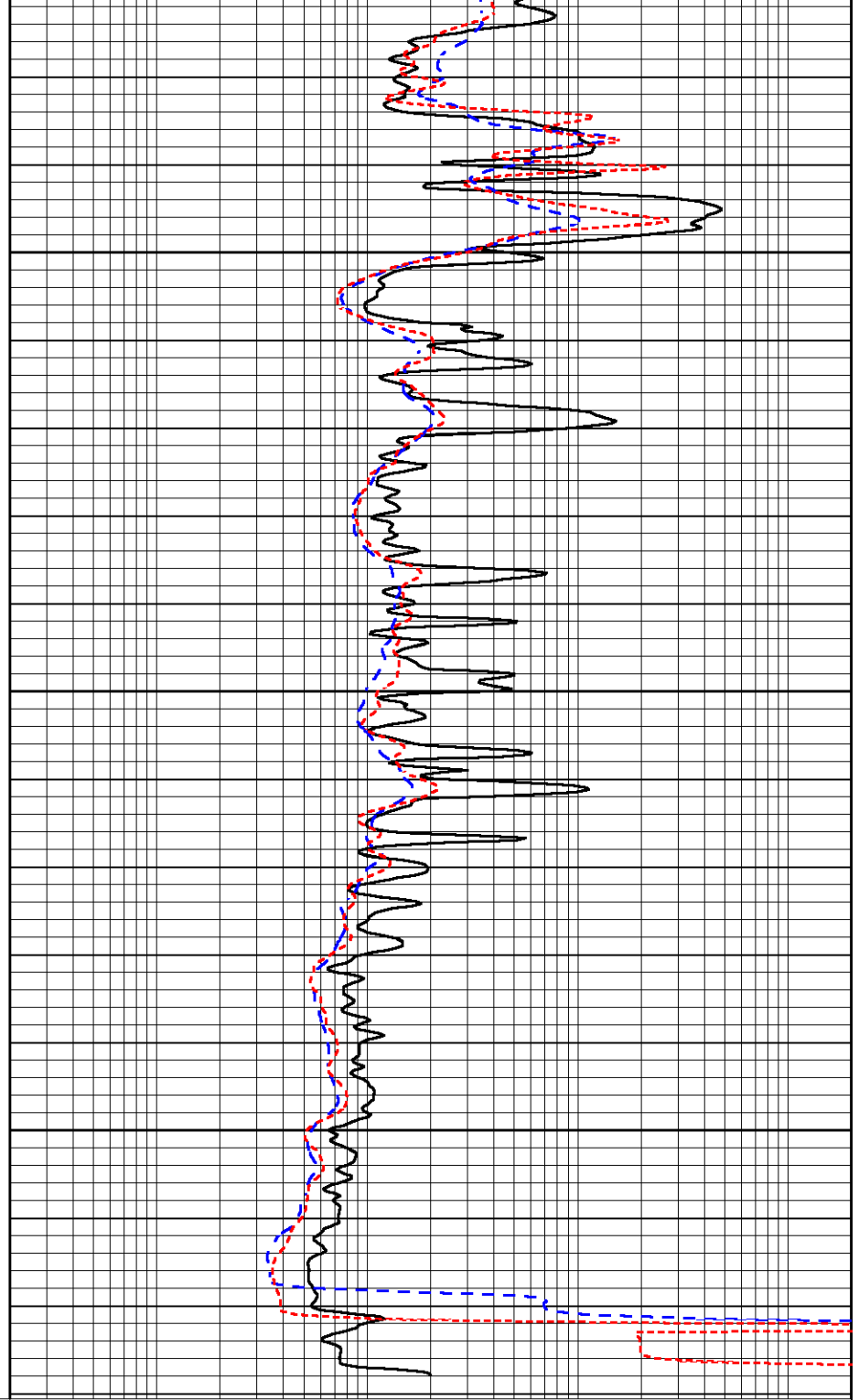


0	GAMMA RAY (GAPI)	150
-100	SP (mV)	100
-250	Rxo/Rt	50
0	MINMK	20

4350

4400

4450



0.2	SHALLOW GUARD (Ohm-m)	2000
0.2	DEEP INDUCTION (Ohm-m)	2000
0.2	MEDIUM INDUCTION (Ohm-m)	2000

Calibration Report

Database File 5624ddn.db
 Dataset Pathname pass2RP
 Dataset Creation Wed Sep 08 15:33:32 2021

Dual Induction Calibration Report

Serial-Model: PROBE8-DILG
 Surface Cal Performed: Mon Sep 10 14:28:35 2018
 Downhole Cal Performed: Mon Sep 10 14:28:38 2018

Surface Calibration								
Loop:	Readings			References			Results	
	Air	Loop		Air	Loop		m	b
Deep	0.015	0.648	V	0.000	400.000	mmho/m	620.000	0.000
Medium	0.029	0.796	V	0.000	464.000	mmho/m	590.000	-12.000
Internal:	Zero	Cal		Zero	Cal		m	b
Deep	0.017	0.657	V	0.000	400.000	mmho/m	625.153	-10.619
Medium	0.016	0.757	V	0.000	464.000	mmho/m	625.992	-9.739

Downhole Calibration								
	Readings			References			Results	
	Zero	Cal		Zero	Cal		m'	b'
Deep	0.000	0.000	mmho/m	2.011	405.777	mmho/m	1.000	0.000
Medium	0.000	0.000	mmho/m	7.590	503.393	mmho/m	1.000	0.000
LL3		7.500	V		1500.000	Ohm-m		
		0.000	V		20.000	Ohm-m		
		-7.200	V		3800.000	mmho-m		

After Survey Verification								
	Readings			Targets			Results	
	Zero	Cal		Zero	Cal		m'	b'
Deep	0.000	0.000	mmho/m	0.000	0.000	mmho/m	0.000	0.000
Medium	0.000	0.000	mmho/m	0.000	0.000	mmho/m	0.000	0.000
LL3		1.000	Ohm-m		1.000	Ohm-m		
		0.000	Ohm-m		0.000	Ohm-m		
		1.000	mmho-m		1.000	mmho-m		

Litho Density Calibration Report
Serial: 001N Model: PRB

Master Calibration					Performed Thu Mar 19 11:30:16 2020			
	Background	Magnesium	Aluminum	Aluminum+Fe				
Window 1	1572.2	7510.8	2837.3	2643.1				cps
Window 2	1446.2	6523.9	2552.8	2409.9				cps
Window 3	1060.9	3611.4	1731.5	1684.8				cps
Window 4	145.5	363.4	363.2	368.1				cps
Long Space	0.0	5077.7	1106.6	963.7				cps
Short Space	3.1	1709.3	1103.4	916.9				cps
Rho		1.7100	2.5900	0.0000				g/cc
Pe		2.0000	2.7500	5.7900				
Rib Angle	: 44.0	Rib Slope	: 0.965	Density/Spine Ratio				: 0.555
Spine Angle	: 74.0	Spine Slope	: 3.481	Spine Intercept				: -17.4

Before Survey Verification					Performed Wed Dec 31 18:00:00 1969			
	Background	Magnesium	Aluminum	Aluminum+Fe				
Window 1	0.0	0.0	0.0	0.0				cps
Window 2	0.0	0.0	0.0	0.0				cps
Window 3	0.0	0.0	0.0	0.0				cps
Window 4	0.0	0.0	0.0	0.0				cps
Long Space	0.0	0.0	0.0	0.0				cps
Short Space	0.0	0.0	0.0	0.0				cps
Measured Rho		0.0000	0.0000	0.0000				g/cc
Measured Correction		0.0000	0.0000	0.0000				g/cc

Measured Pe

0.0000

0.0000

After Survey Verification

Performed Wed Dec 31 18:00:00 1969

Window 1	0.0	0.0	0.0	0.0	cps
Window 2	0.0	0.0	0.0	0.0	cps
Window 3	0.0	0.0	0.0	0.0	cps
Window 4	0.0	0.0	0.0	0.0	cps
Long Space	0.0	0.0	0.0	0.0	cps
Short Space	0.0	0.0	0.0	0.0	cps
Measured Rho		0.0000	0.0000	0.0000	g/cc
Measured Correction		0.0000	0.0000	0.0000	g/cc
Measured Pe			0.0000	0.0000	

Compensated Neutron Calibration Report

Serial Number: 6I
Tool Model: G

CALIBRATION

Detector	Readings	Target	Normalization
Short Space	1.00 cps	1.00 cps	1.0000
Long Space	1.00 cps	1.00 cps	1.0000

PRE-SURVEY VERIFICATION

Detector	Readings	Measured	Target
1) Short Space	cps		
Long Space	cps	pu	pu
2) Short Space	cps		
Long Space	cps	pu	
3) Short Space	cps		
Long Space	cps	pu	

POST-SURVEY VERIFICATION

Detector	Readings	Measured	Target
1) Short Space	cps		
Long Space	cps	pu	pu
2) Short Space	cps		
Long Space	cps	pu	pu
3) Short Space	cps		
Long Space	cps	pu	pu

Gamma Ray Calibration Report

Serial Number: GR6
Tool Model: OPEN
Performed: Thu Jul 30 20:04:35 2020

Calibrator Value: 150.0 GAPI

Background Reading: 0.0 cps
Calibrator Reading: 276.0 cps

Sensitivity: 0.7500 GAPI/cps

SENSITIVE GROUPS