



**COMPENSATED
DENSITY/NEUTRON
LOG**

Company PALOMINO PETROLEUM
Well THE WORLD IS NOT ENOUGH #1
Field WILDCAT
County NESS
State KANSAS

Company PALOMINO PETROLEUM
Well THE WORLD IS NOT ENOUGH #1
Field WILDCAT
County NESS State KANSAS

Location: API #: 15-135-26118-0000
382' FSL & 140' FEL
SEC 12 TWP 18S RGE 25W
Permanent Datum GROUND LEVEL Elevation 2334
Log Measured From KELLY BUSHING 5' A.G.L.
Drilling Measured From KELLY BUSHING
Other Services
DIL
ML
Elevation
K.B. 2339
D.F. 2337
G.L. 2334

Date	9/8/21		
Run Number	ONE		
Depth Driller	4477		
Depth Logger	4476		
Bottom Logged Interval	4456		
Top Log Interval	3400		
Casing Driller	8 5/8" @ 211		
Casing Logger	211		
Bit Size	7 7/8"		
Type Fluid in Hole	CHEMICAL MUD		
Density / Viscosity	9.4/55		
pH / Fluid Loss	10.0/6.0		
Source of Sample	FLOWLINE		
Rm @ Meas. Temp	.6@ 70F		
Rmf @ Meas. Temp	.45@ 70F		
Rmc @ Meas. Temp	.72 @ 70F		
Source of Rmf / Rmc	MEASURED		
Rm @ BHT	.35@ 120F		
Time Circulation Stopped	2 HOURS		
Time Logger on Bottom	////		
Maximum Recorded Temperature	120F		
Equipment Number	1523		
Location	HAYS, KANSAS		
Recorded By	GUS PFANENSTIEL		
Witnessed By	RYAN SEIB		

<<< Fold Here >>>

All interpretations are opinions based on inferences from electrical or other measurements and we cannot and do not guarantee the accuracy or correctness of any interpretation, and we shall not, except in the case of gross or willful negligence on our part, be liable or responsible for any loss, costs, damages, or expenses incurred or sustained by anyone resulting from any interpretation made by any of our officers, agents or employees. These interpretations are also subject to our general terms and conditions set out in our current Price Schedule.

Comments

THANK YOU FOR USING ELI WIRELINE, HAYS, KS. (785) 628-6395

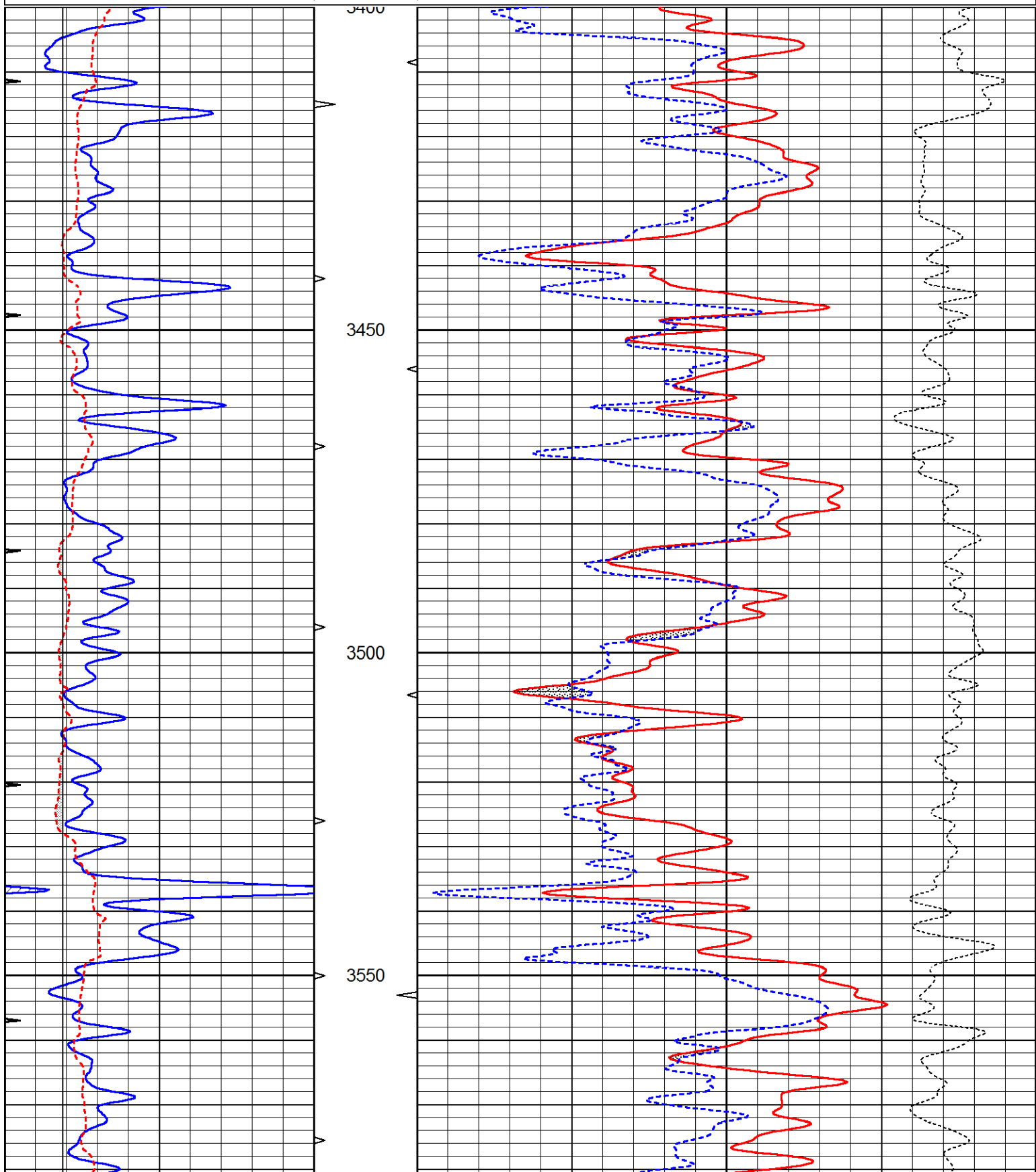
DIRECTIONS:NESS CITY WEST TO L RD., NORTH 4 MILES,
WEST INTO.

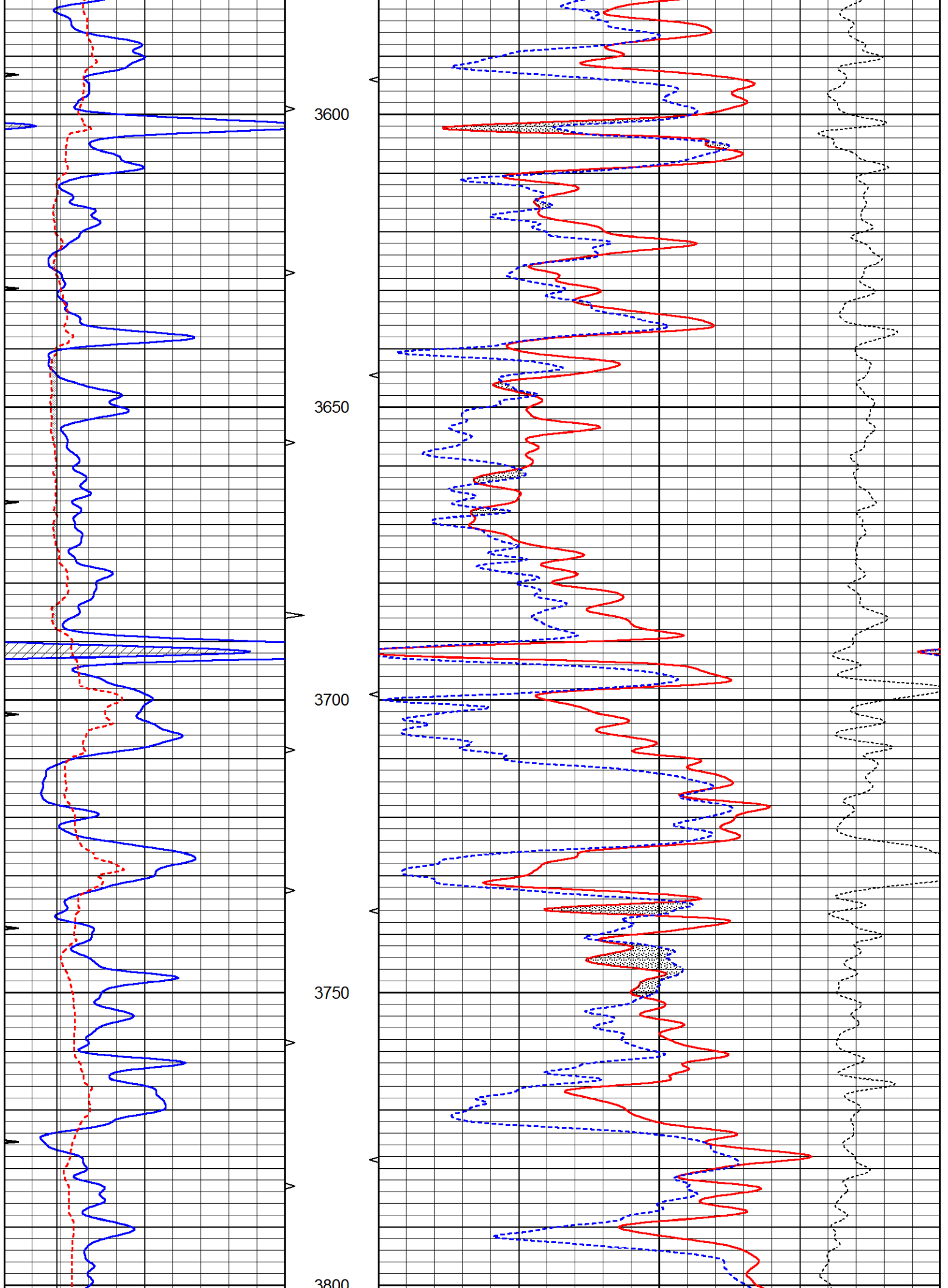


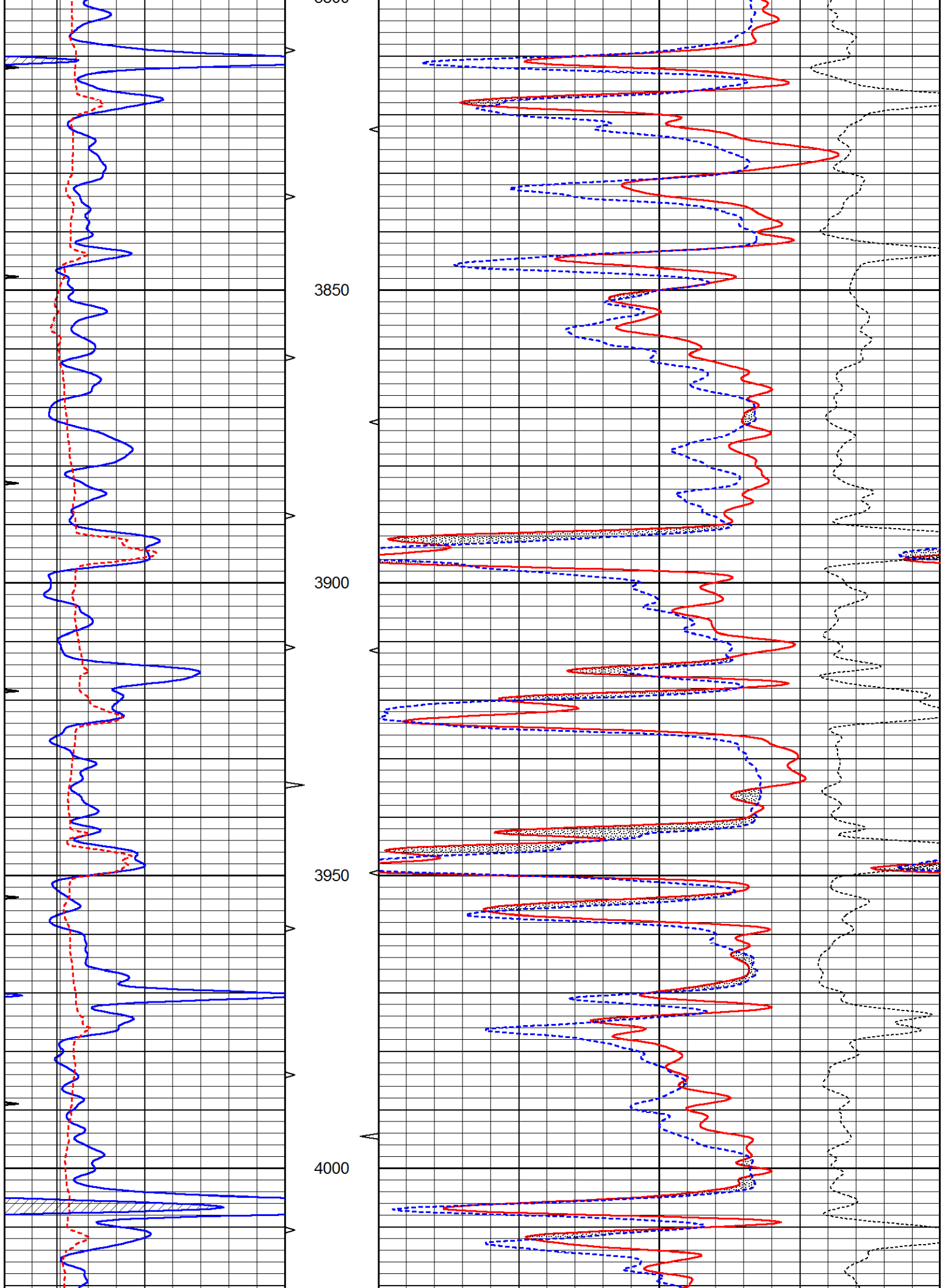
MAIN PASS

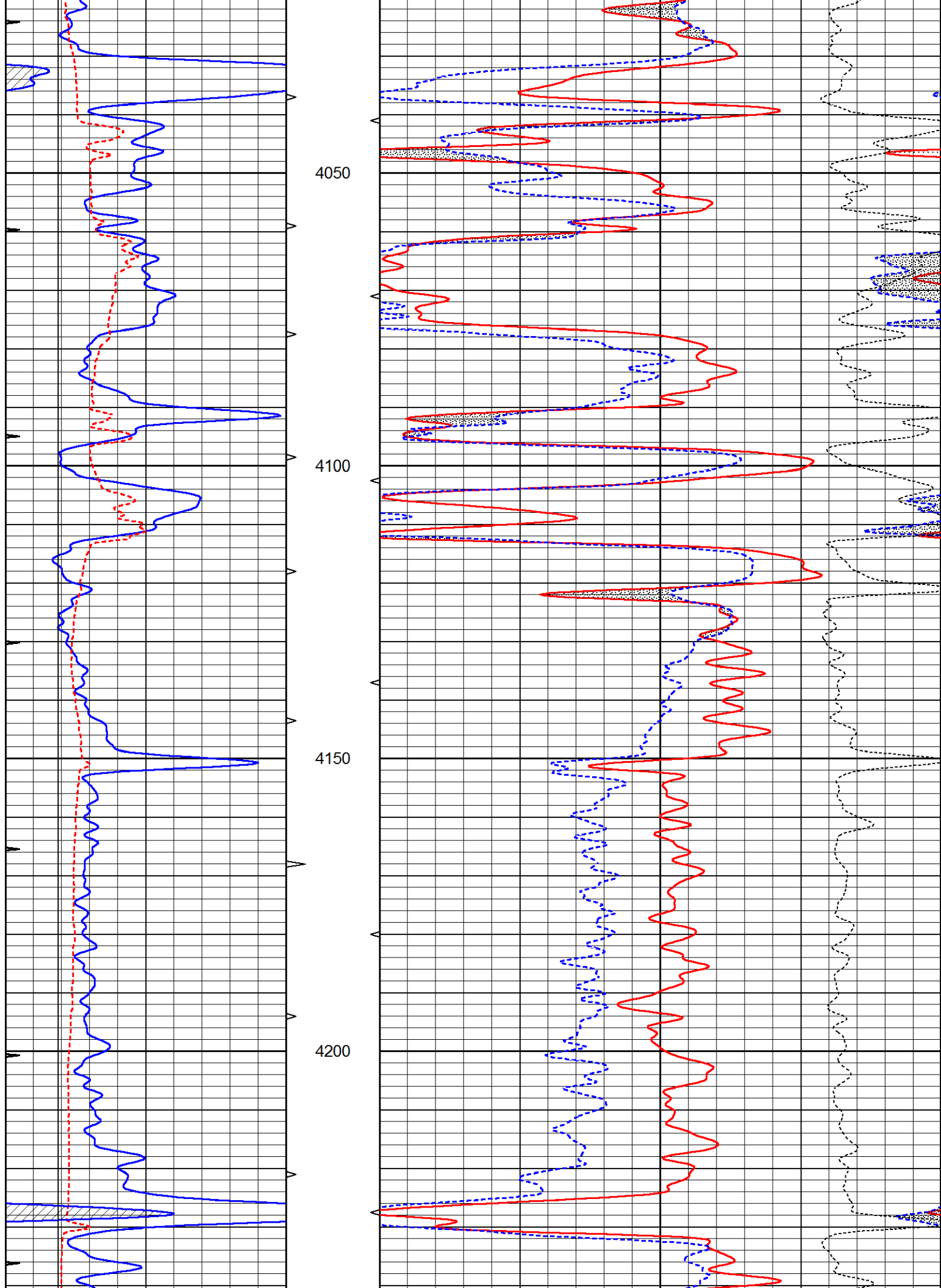
Database File 5624ddn.db
 Dataset Pathname pass3.1
 Presentation Format den_neu
 Dataset Creation Wed Sep 08 15:52:14 2021
 Charted by Depth in Feet scaled 1:240

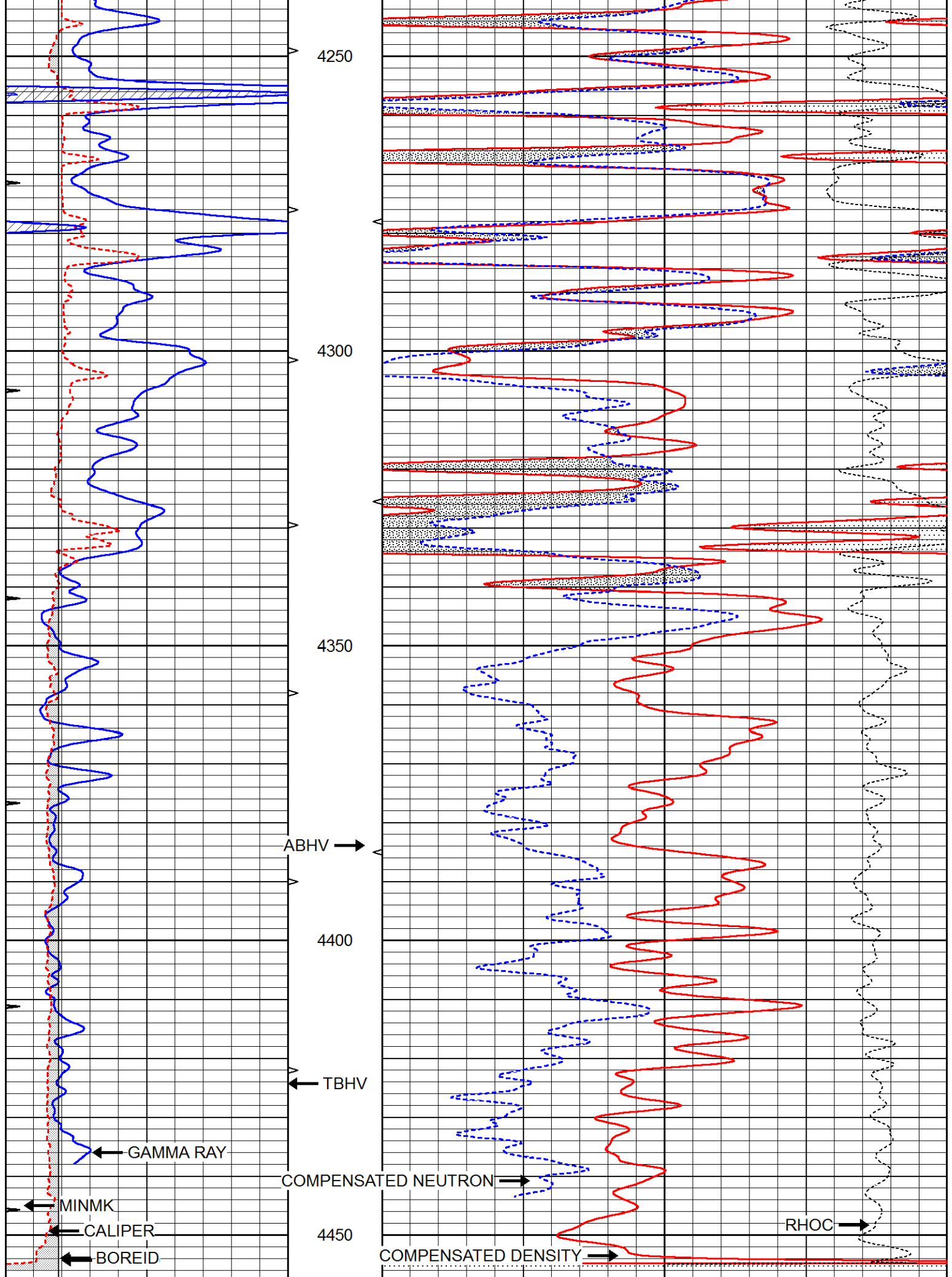
0	GAMMA RAY (GAPI)	150	ABHV	30	COMPENSATED DENSITY (pu)	-10	
6	CALIPER (in)	16	10 (ft3)	0	COMPENSATED NEUTRON (pu)	-10	
0	MINMK	20	TBHV		-0.25	CORRECTION (g/cc)	0.25
			0 (ft3)	10			











LTD 4476

LIMESTONE MATRIX 2.71

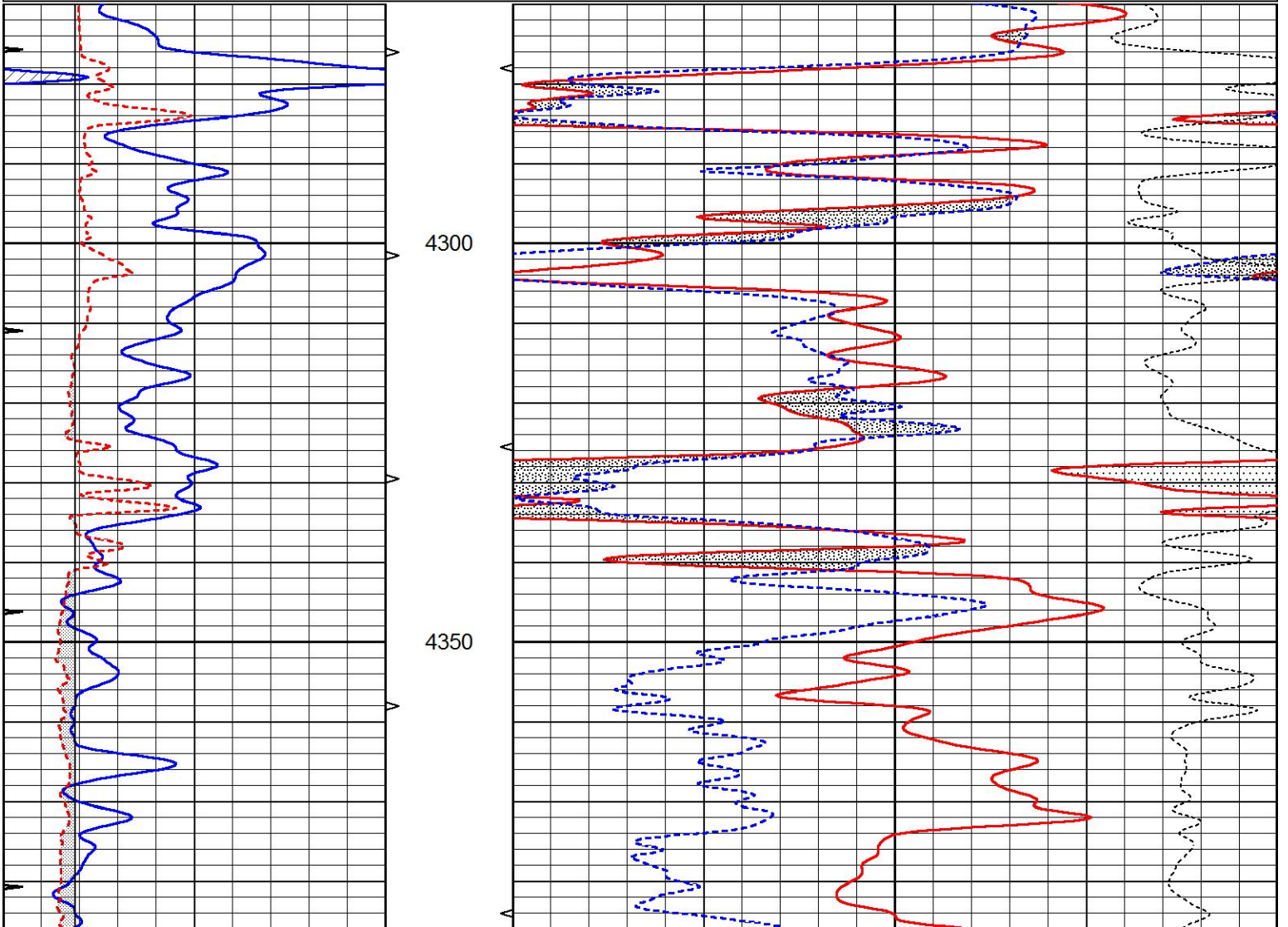
0	GAMMA RAY (GAPI)	150	ABHV	30	COMPENSATED DENSITY (pu)	-10
6	CALIPER (in)	16	10 (ft3)	0 30	COMPENSATED NEUTRON (pu)	-10
0	MINMK	20	TBHV		-0.25 CORRECTION (g/cc)	0.25
			0 (ft3)	10		

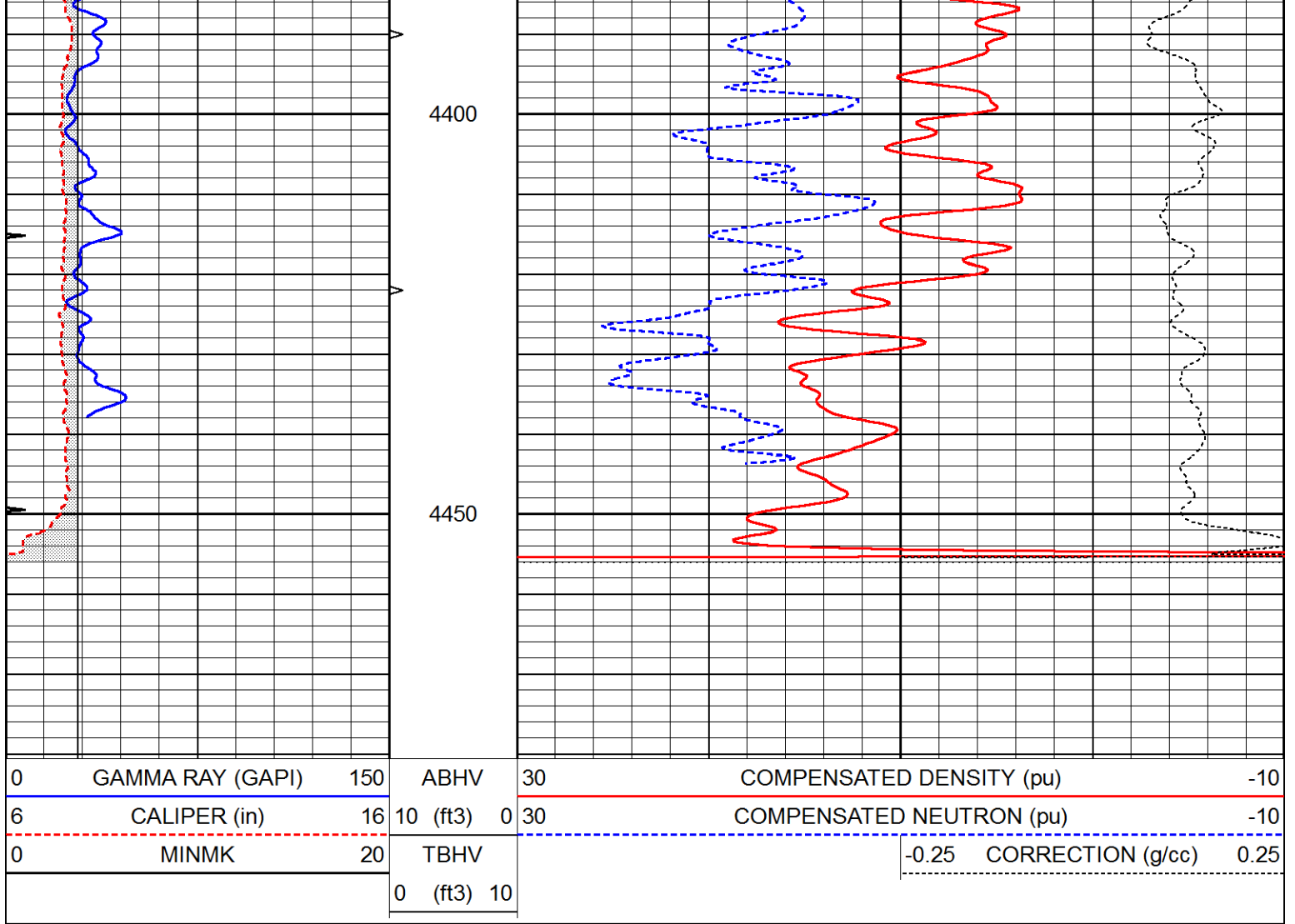


REPEAT SECTION

Database File 5624ddn.db
 Dataset Pathname pass2RP
 Presentation Format den_neu
 Dataset Creation Wed Sep 08 15:33:32 2021
 Charted by Depth in Feet scaled 1:240

0	GAMMA RAY (GAPI)	150	ABHV	30	COMPENSATED DENSITY (pu)	-10
6	CALIPER (in)	16	10 (ft3)	0 30	COMPENSATED NEUTRON (pu)	-10
0	MINMK	20	TBHV		-0.25 CORRECTION (g/cc)	0.25
			0 (ft3)	10		





Calibration Report

Database File 5624ddn.db
 Dataset Pathname pass2RP
 Dataset Creation Wed Sep 08 15:33:32 2021

Dual Induction Calibration Report

Serial-Model: PROBE8-DILG
 Surface Cal Performed: Mon Sep 10 14:28:35 2018
 Downhole Cal Performed: Mon Sep 10 14:28:38 2018
 After Survey Verification Performed: Mon Sep 10 14:28:40 2018

Surface Calibration

Loop:	Readings				References		Results	
	Air	Loop			Air	Loop	m	b
Deep	0.015	0.648	V	0.000	400.000	mmho/m	620.000	0.000
Medium	0.029	0.796	V	0.000	464.000	mmho/m	590.000	-12.000
Internal:	Zero	Cal		Zero	Cal		m	b
Deep	0.017	0.657	V	0.000	400.000	mmho/m	625.153	-10.619
Medium	0.016	0.757	V	0.000	464.000	mmho/m	625.992	-9.739

Downhole Calibration

	Readings				References		Results	
	Zero	Cal			Zero	Cal	m'	b'
Deep	0.000	0.000	mmho/m	0.011	405.777	mmho/m	1.000	0.000

Deep	0.000	0.000	mmho/m	2.011	405.777	mmho/m	1.000	0.000
Medium	0.000	0.000	mmho/m	7.590	503.393	mmho/m	1.000	0.000
LL3		7.500	V		1500.000	Ohm-m		
		0.000	V		20.000	Ohm-m		
		-7.200	V		3800.000	mmho-m		

After Survey Verification								
	Readings			Targets			Results	
	Zero	Cal		Zero	Cal		m'	b'
Deep	0.000	0.000	mmho/m	0.000	0.000	mmho/m	0.000	0.000
Medium	0.000	0.000	mmho/m	0.000	0.000	mmho/m	0.000	0.000
LL3		1.000	Ohm-m		1.000	Ohm-m		
		0.000	Ohm-m		0.000	Ohm-m		
		1.000	mmho-m		1.000	mmho-m		

Litho Density Calibration Report
Serial: 001N Model: PRB

Master Calibration		Performed Thu Mar 19 11:30:16 2020					
	Background	Magnesium	Aluminum	Aluminum+Fe			
Window 1	1572.2	7510.8	2837.3	2643.1		cps	
Window 2	1446.2	6523.9	2552.8	2409.9		cps	
Window 3	1060.9	3611.4	1731.5	1684.8		cps	
Window 4	145.5	363.4	363.2	368.1		cps	
Long Space	0.0	5077.7	1106.6	963.7		cps	
Short Space	3.1	1709.3	1103.4	916.9		cps	
Rho		1.7100	2.5900	0.0000		g/cc	
Pe		2.0000	2.7500	5.7900			
Rib Angle	: 44.0	Rib Slope	: 0.965	Density/Spine Ratio		: 0.555	
Spine Angle	: 74.0	Spine Slope	: 3.481	Spine Intercept		: -17.4	

Before Survey Verification		Performed Wed Dec 31 18:00:00 1969					
Window 1	0.0	0.0	0.0	0.0		cps	
Window 2	0.0	0.0	0.0	0.0		cps	
Window 3	0.0	0.0	0.0	0.0		cps	
Window 4	0.0	0.0	0.0	0.0		cps	
Long Space	0.0	0.0	0.0	0.0		cps	
Short Space	0.0	0.0	0.0	0.0		cps	
Measured Rho		0.0000	0.0000	0.0000		g/cc	
Measured Correction		0.0000	0.0000	0.0000		g/cc	
Measured Pe			0.0000	0.0000			

After Survey Verification		Performed Wed Dec 31 18:00:00 1969					
Window 1	0.0	0.0	0.0	0.0		cps	
Window 2	0.0	0.0	0.0	0.0		cps	
Window 3	0.0	0.0	0.0	0.0		cps	
Window 4	0.0	0.0	0.0	0.0		cps	
Long Space	0.0	0.0	0.0	0.0		cps	
Short Space	0.0	0.0	0.0	0.0		cps	
Measured Rho		0.0000	0.0000	0.0000		g/cc	
Measured Correction		0.0000	0.0000	0.0000		g/cc	
Measured Pe			0.0000	0.0000			

Serial Number: 6I
Tool Model: G

CALIBRATION

Detector	Readings	Target	Normalization
Short Space	1.00 cps	1.00 cps	1.0000
Long Space	1.00 cps	1.00 cps	1.0000

PRE-SURVEY VERIFICATION

	Detector	Readings	Measured	Target
1)	Short Space	cps		
	Long Space	cps	pu	pu
2)	Short Space	cps		
	Long Space	cps	pu	
3)	Short Space	cps		
	Long Space	cps	pu	

POST-SURVEY VERIFICATION

	Detector	Readings	Measured	Target
1)	Short Space	cps		
	Long Space	cps	pu	pu
2)	Short Space	cps		
	Long Space	cps	pu	pu
3)	Short Space	cps		
	Long Space	cps	pu	pu

Gamma Ray Calibration Report

Serial Number: GR6
Tool Model: OPEN
Performed: Thu Jul 30 20:04:35 2020

Calibrator Value: 150.0 GAPI

Background Reading: 0.0 cps
Calibrator Reading: 276.0 cps

Sensitivity: 0.7500 GAPI/cps