

MICRO LOG



Company PALOMINO PETROLEUM
 Well THE WORLD IS NOT ENOUGH #1
 Field WILDCAT
 County NESS State KANSAS

Location: API #: 15-135-26118-0000
 382' FSL & 140' FEL
 SEC 12 TWP 18S RGE 25W
 Permanent Datum GROUND LEVEL Elevation 2334
 Log Measured From KELLY BUSHING 5' A.G.L.
 Drilling Measured From KELLY BUSHING
 Other Services CDL/CNL DIL
 Elevation K.B. 2339
 D.F. 2337
 G.L. 2334

Date	9/8/21
Run Number	TWO
Depth Driller	4477
Depth Logger	4476
Bottom Logged Interval	4474
Top Log Interval	3400
Casing Driller	8 5/8" @ 211
Casing Logger	211
Bit Size	7 7/8"
Type Fluid in Hole	CHEMICAL MUD
Density / Viscosity	9.4/55
pH / Fluid Loss	10.0/6.0
Source of Sample	FLOWLINE
Rm @ Meas. Temp	.6@ 70F
Rmf @ Meas. Temp	.45@ 70F
Rmc @ Meas. Temp	.72 @ 70F
Source of Rmf / Rmc	MEASURED
Rm @ BHT	.35@ 120F
Time Circulation Stopped	2 HOURS
Time Logger on Bottom	////
Maximum Recorded Temperature	120F
Equipment Number	1523
Location	HAYS, KANSAS
Recorded By	GUS PFANENSTIEL
Witnessed By	RYAN SEIB

<<< Fold Here >>>

All interpretations are opinions based on inferences from electrical or other measurements and we cannot and do not guarantee the accuracy or correctness of any interpretation, and we shall not, except in the case of gross or willful negligence on our part, be liable or responsible for any loss, costs, damages, or expenses incurred or sustained by anyone resulting from any interpretation made by any of our officers, agents or employees. These interpretations are also subject to our general terms and conditions set out in our current Price Schedule.

Comments

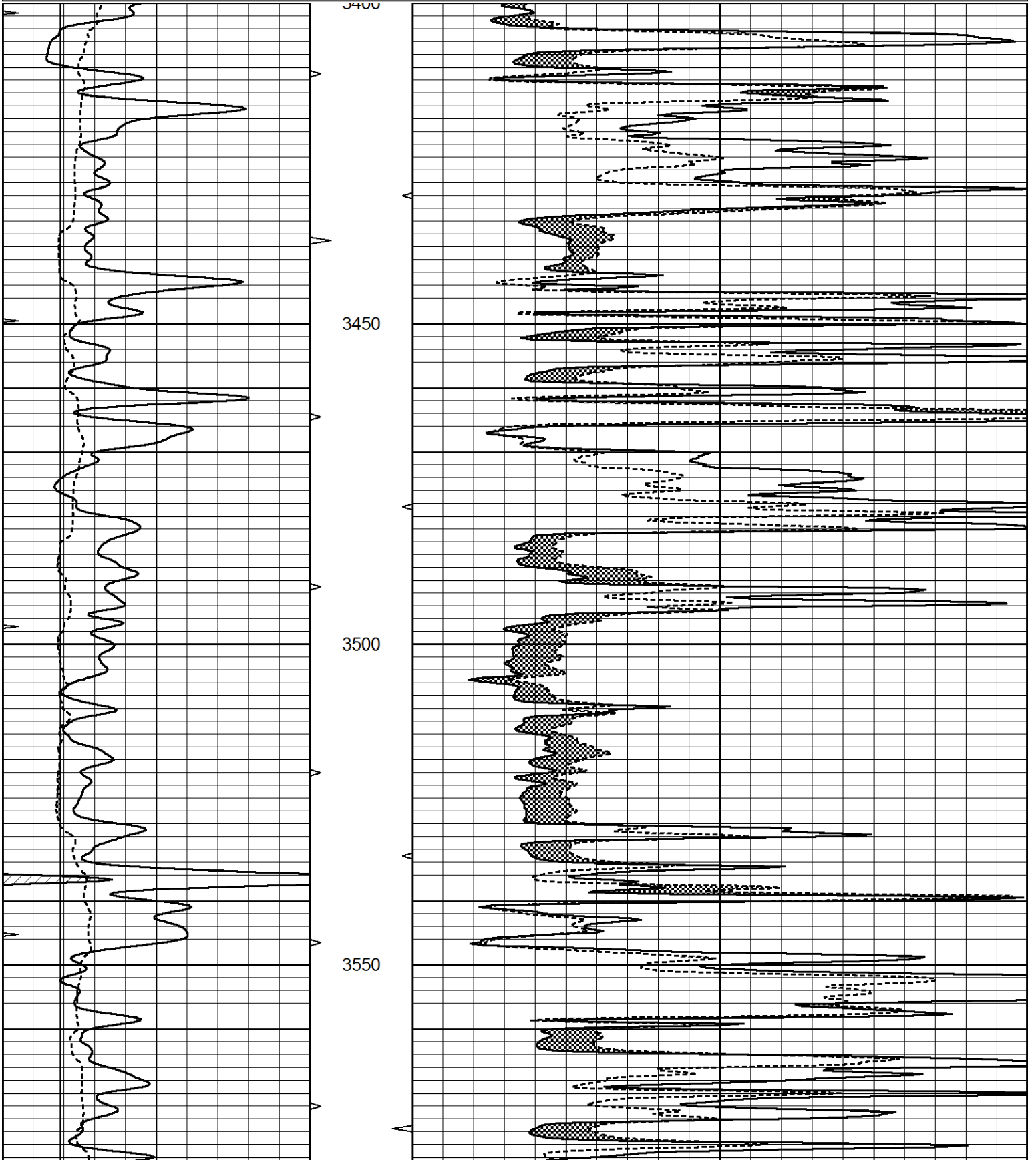
THANK YOU FOR USING ELI WIRELINE, HAYS, KS. (785) 628-6395
 DIRECTIONS:NESS CITY WEST TO L RD., NORTH 4 MILES,
 WEST INTO.

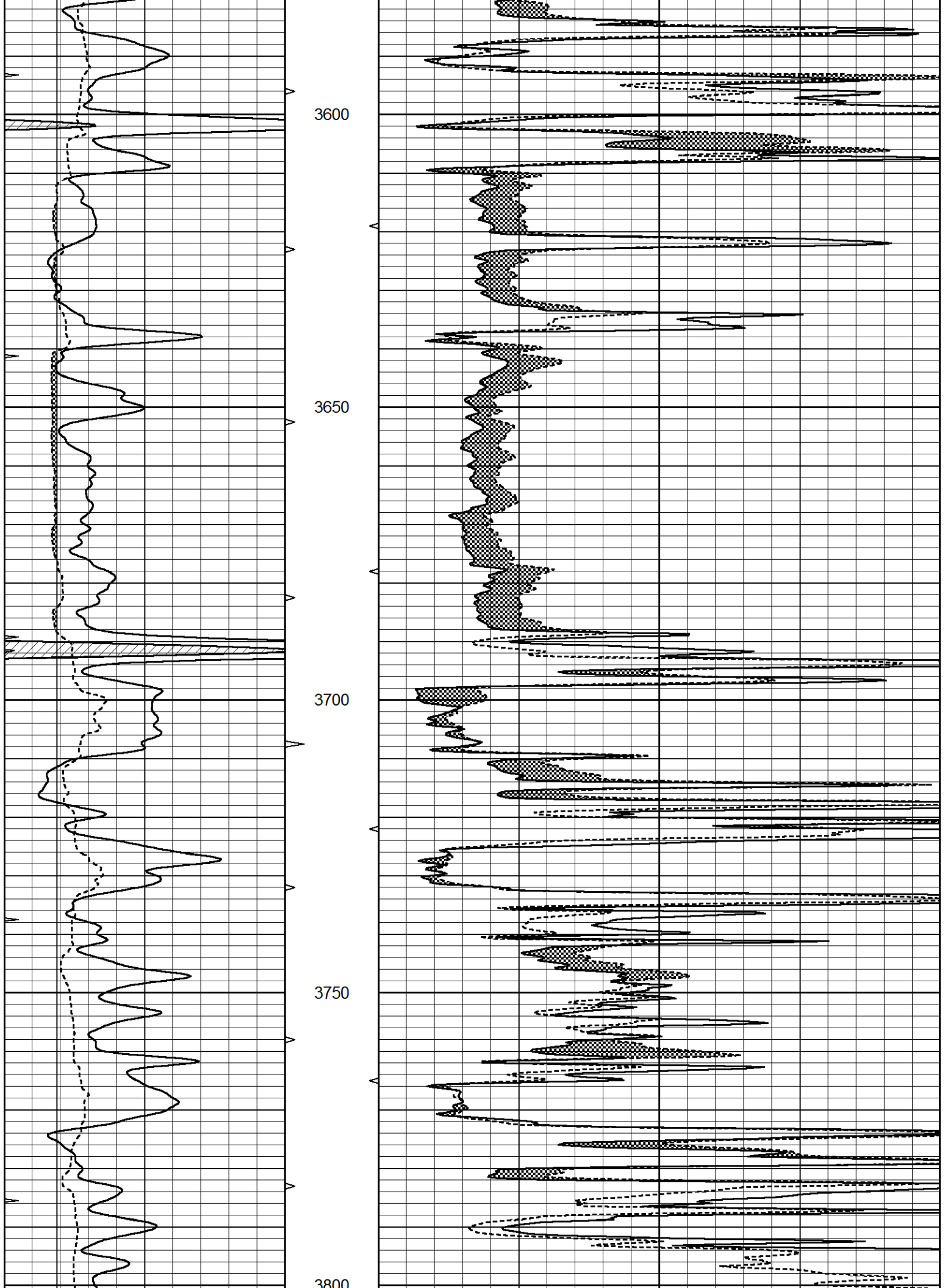


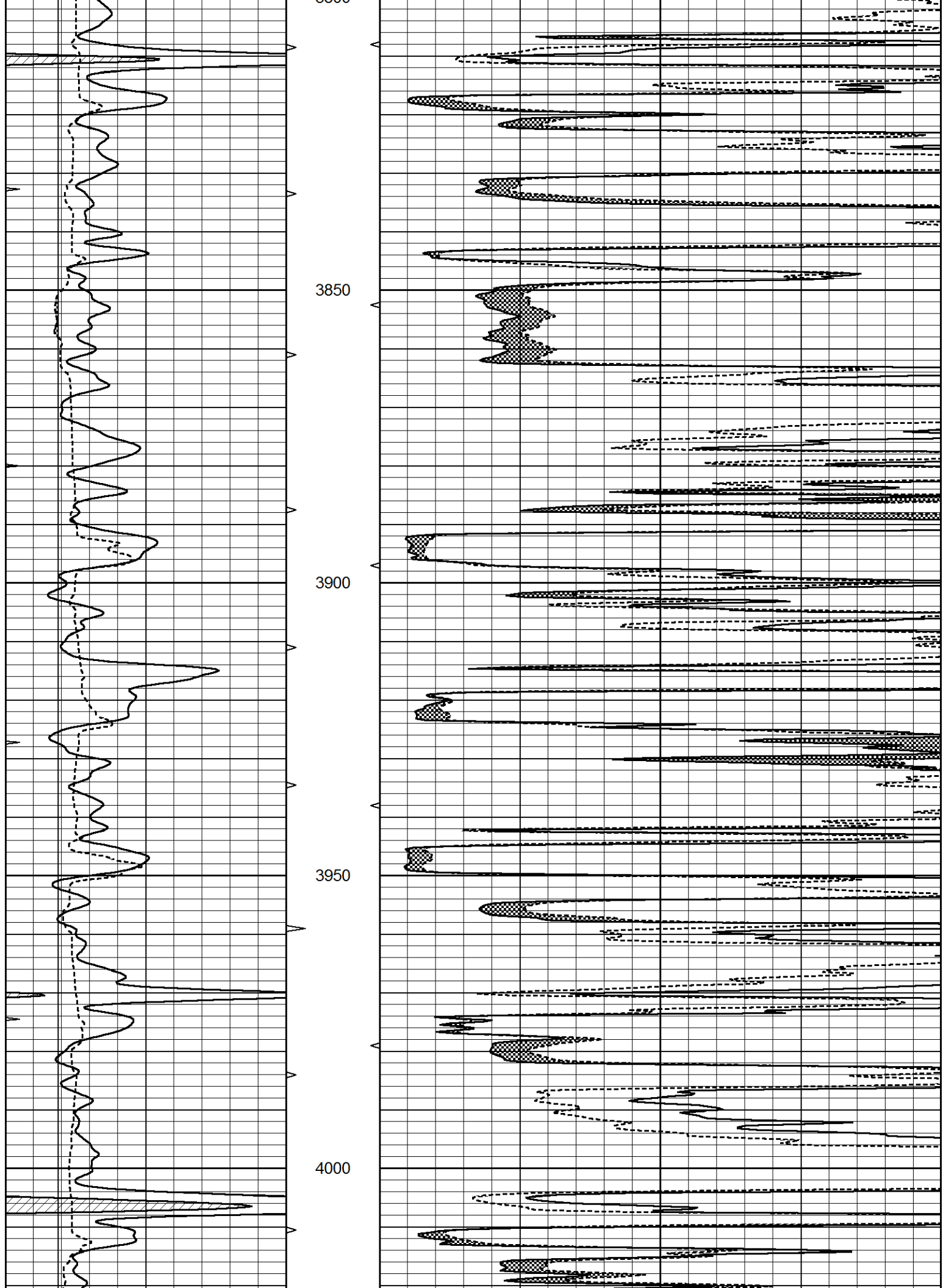
MAIN PASS

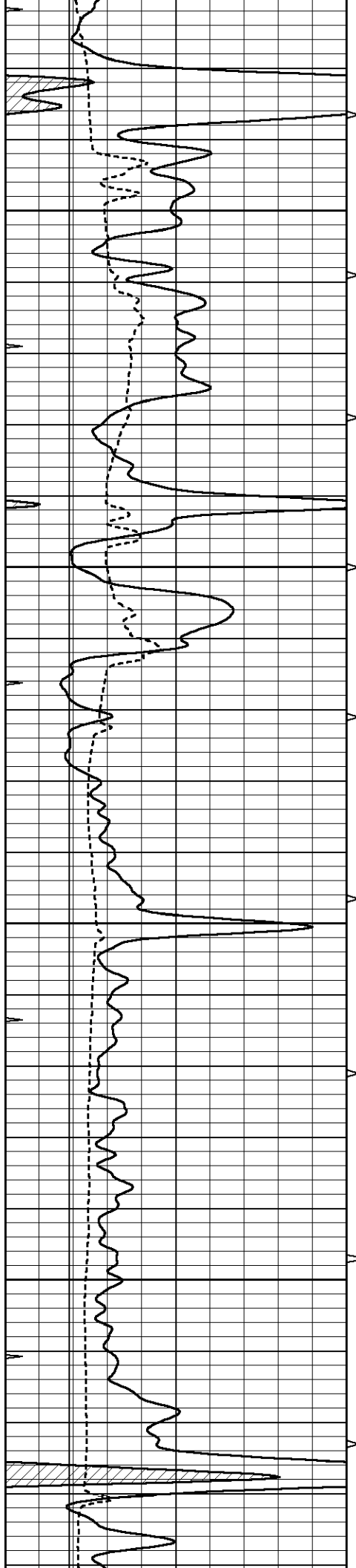
Database File 5624ddn.db
 Dataset Pathname pass5.1
 Presentation Format _micro
 Dataset Creation Wed Sep 08 16:43:33 2021
 Charted by Depth in Feet scaled 1:240

0	GAMMA RAY (GAPI)	150	ABHV	0	MEL1.5 (Ohm-m)	40
6	CALIPER (in)	16	10 (ft3)	0	MEL2.0 (Ohm-m)	40
0	MINMK	20	TBHV			
			0 (ft3)	10		







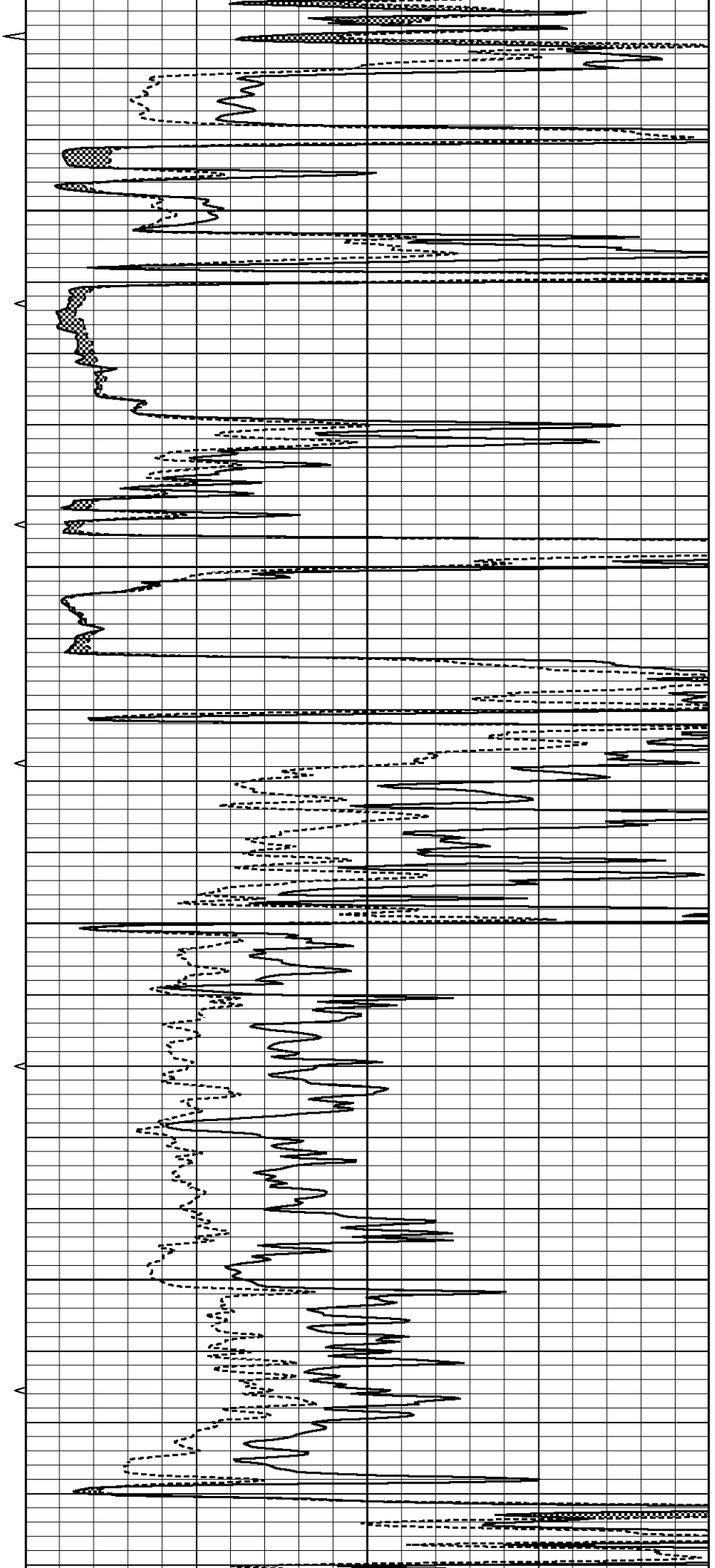


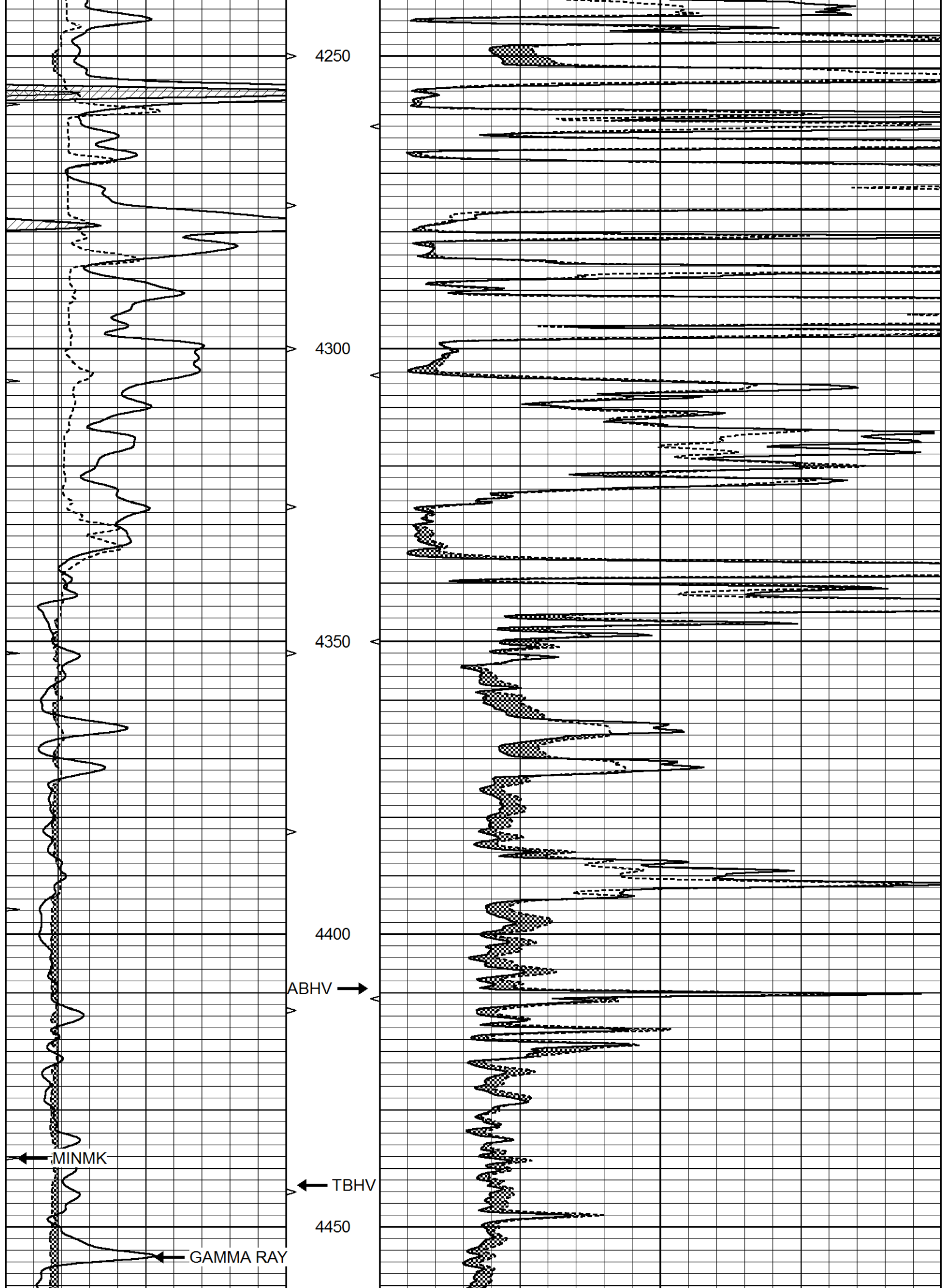
4050

4100

4150

4200





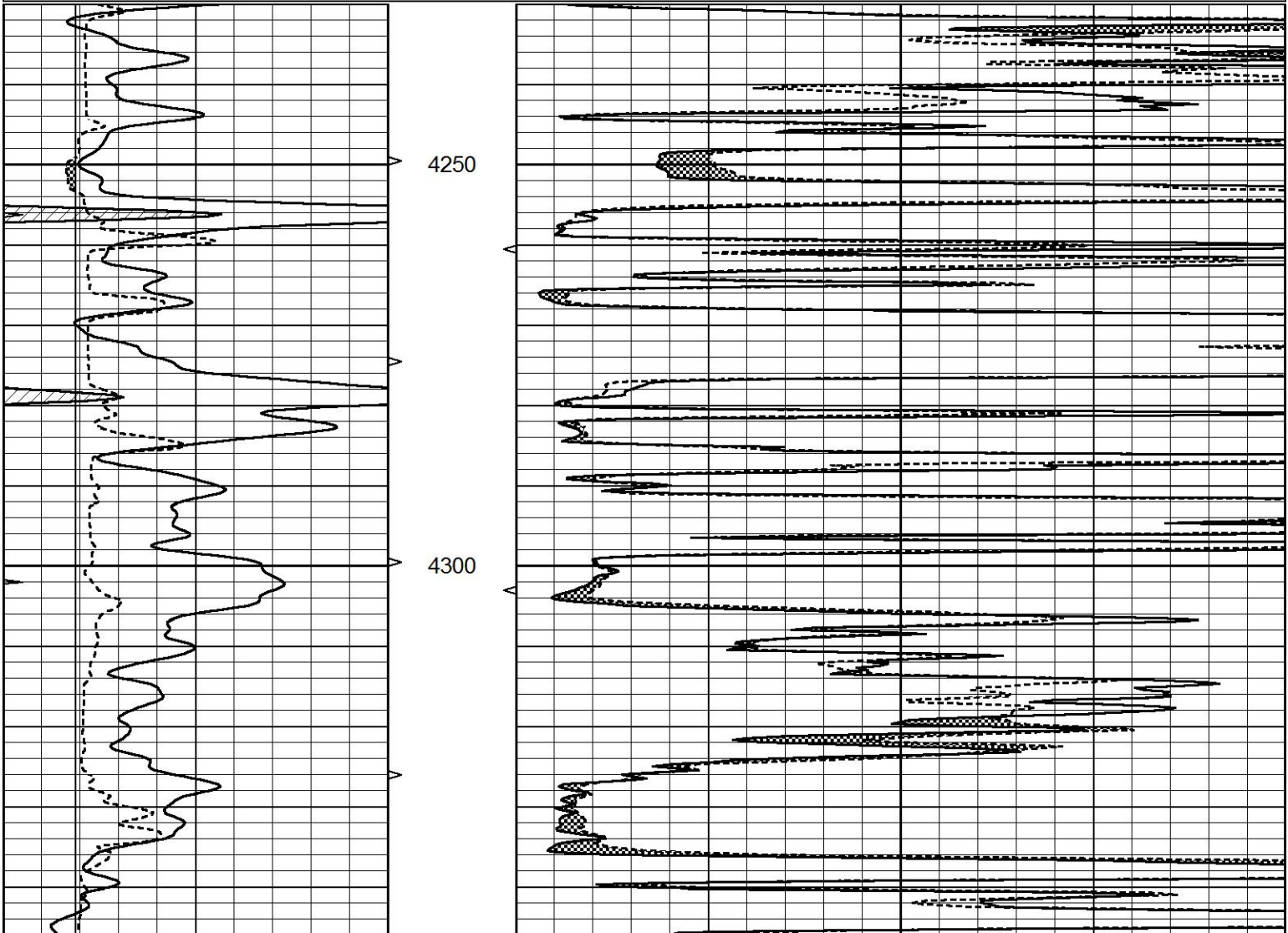
		LTD 4476	
0	GAMMA RAY (GAPI)	150	ABHV
6	CALIPER (in)	16	10 (ft3) 0 0
0	MINMK	20	TBHV
			0 (ft3) 10
			MEL1.5 (Ohm-m) 40
			MEL2.0 (Ohm-m) 40

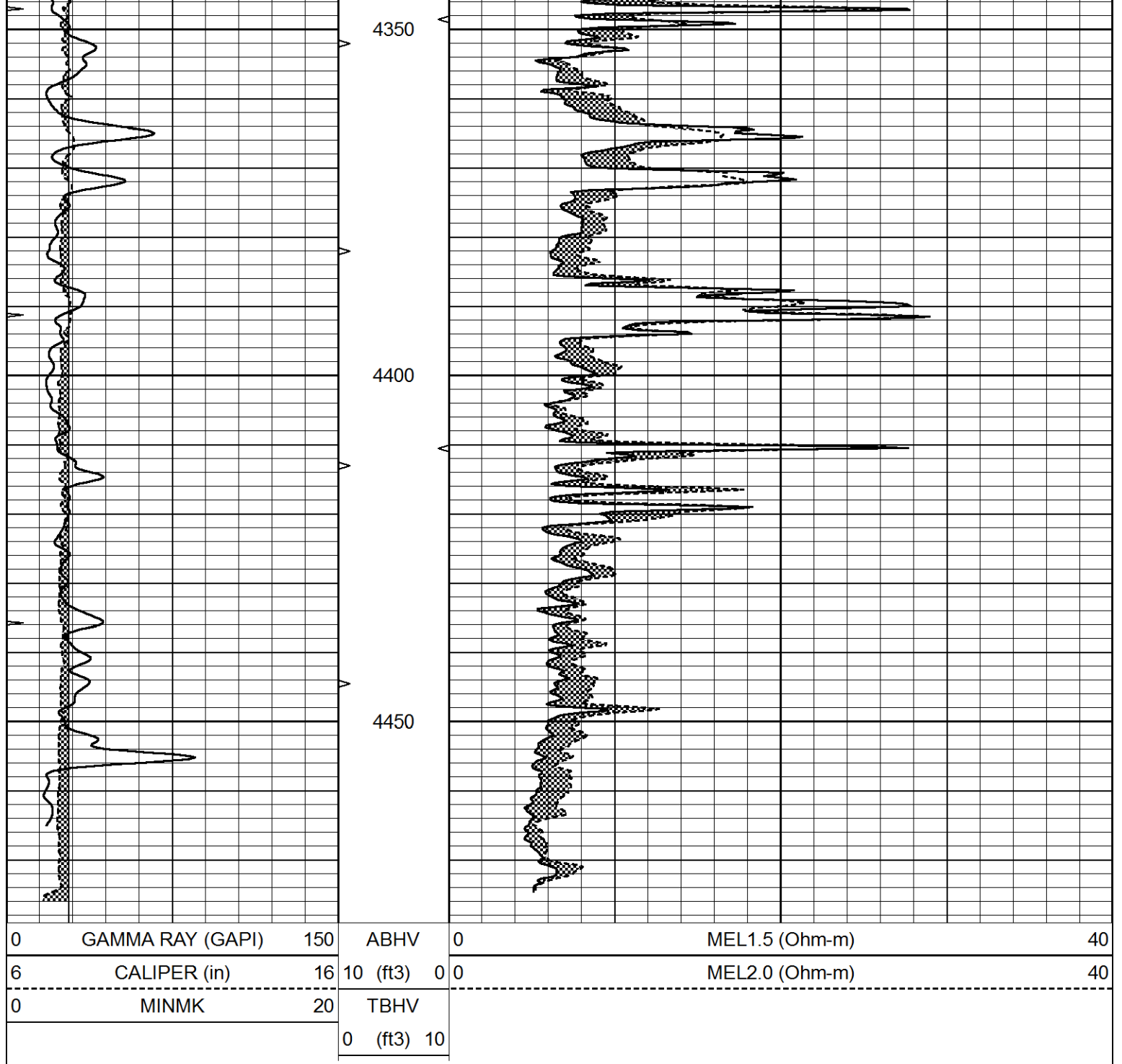


REPEAT SECTION

Database File 5624ddn.db
 Dataset Pathname pass4.1
 Presentation Format _micro
 Dataset Creation Wed Sep 08 16:16:36 2021
 Charted by Depth in Feet scaled 1:240

0	GAMMA RAY (GAPI)	150	ABHV	0	MEL1.5 (Ohm-m)	40
6	CALIPER (in)	16	10 (ft3) 0 0	0	MEL2.0 (Ohm-m)	40
0	MINMK	20	TBHV			
			0 (ft3) 10			





Calibration Report

Database File 5624ddn.db
 Dataset Pathname pass4.1
 Dataset Creation Wed Sep 08 16:16:36 2021

MICRO Calibration Report

Serial Number: Micro1
 Tool Model: Probel
 Performed: Thu Aug 05 13:03:33 2021

Caliper Calibration: Gain=2.815 Offset=4.552

References Low Cal High Cal
 Readings 8.500 13.500
 0.887 2.663

1.5" Calibration: Gain=36.134 Offset=0.000

References	Low Cal	High Cal
Readings	0.000	20.000
	0.004	0.832

2" Calibration:	Gain=38.000	Offset=0.200
-----------------	-------------	--------------

References	Low Cal	High Cal
Readings	0.000	20.000
	0.022	0.793

Gamma Ray Calibration Report

Serial Number:	GR5
Tool Model:	OPEN
Performed:	Thu Jul 30 23:16:16 2020

Calibrator Value:	1.0	GAPI
-------------------	-----	------

Background Reading:	0.0	cps
Calibrator Reading:	1.0	cps

Sensitivity:	0.6000	GAPI/cps
--------------	--------	----------