

Sensor	Offset (ft)	Schematic	Description	Length (ft)	O.D. (in)	Weight (lb)
GR	40.33		GR-M&W (103)	3.00	3.50	50.00
CNLSC CNSSC	37.23 36.48		CNT-M&W (210)	5.00	3.50	100.00
LSD DCAL SSD	28.18 28.17 27.68		CDL-M&W (303-03)	8.50	4.00	250.00
MCAL MI MN	19.58 19.58 19.58		ML-PSI STKBL ML (402)	7.58	4.00	65.00
RLL3F RLL3	15.50 15.50					
CILD	8.33		DIL-M&W (504 HT)	18.25	3.50	220.00
CILM	4.50					
SP	0.20					

Dataset: murfin_carolyn a #4-24.db: field/well/StkMI/pass4.1
 Total length: 42.33 ft
 Total weight: 685.00 lb
 O.D.: 4.00 in

Log Variables

DatabaseC:\ProgramData\Warrior\Data\murfin_carolyn a #4-24.db
 Dataset field/well/StkMI/pass4.1/_vars_

Top - Bottom

A	BOREID in	BOTTEMP degF	CASEOD in	CASETHCK in	FLUIDDEN g/cc	M	MATRXDEN g/cc
1	7.875	127	5.5	0	1	2	2.71
NPORSEL	PERFS	SNDERR mmho/m	SNDERRM mmho/m	SPSHIFT mV	SRFTEMP degF	SZCOR	TDEPTH ft
Limestone	0	0	0	460	70	Off	5094

Variable Description

A : Cement Factor (a)
 BOREID : Borehole I.D.
 BOTTEMP : Bottom Hole Temperature
 CASEOD : Casing O.D.
 CASETHCK : Casing Thickness
 FLUIDDEN : Fluid Density
 M : Cement Exp (m)
 MATRXDEN : Matrix Density

NPORSEL : Neutron Porosity Curve Select
 PERFS : Perforation Flag
 SNDERR : Deep Sonde Error Correction
 SNDERRM : Medium Sonde Error Correction
 SPSHIFT : S.P. Baseline Offset
 SRFTEMP : Surface Temperature
 SZCOR : CN Size Cor. ?
 TDEPTH : Total Depth



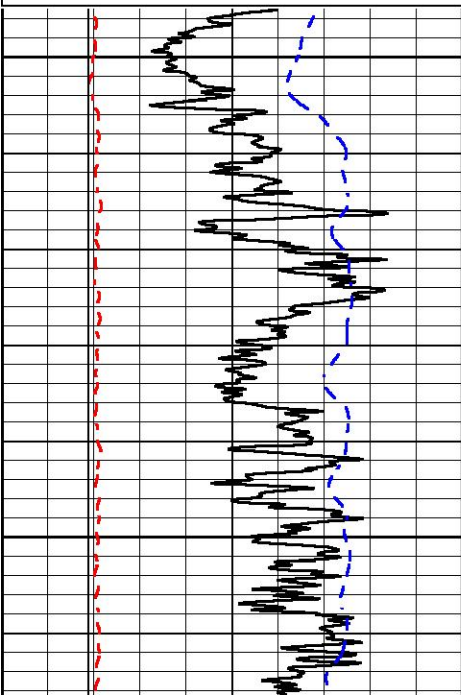
DETAIL SECTION

MAIN PASS

Database File murfin_carolyn a #4-24.db
 Dataset Pathname StkMI/pass4.1
 Presentation Format _micro
 Dataset Creation Sat Mar 19 19:04:42 2022
 Charted by Depth in Feet scaled 1:240

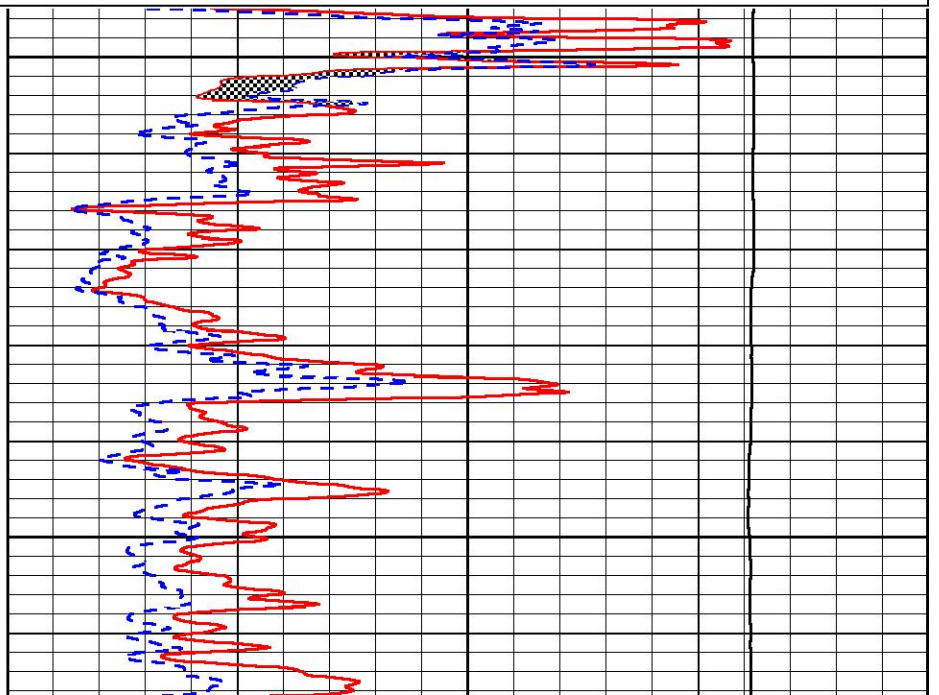
0	Gamma Ray (GAPI)	150
6	Caliper (in)	16
2.875	mcal (in)	7.875
-200	SP (mV)	0

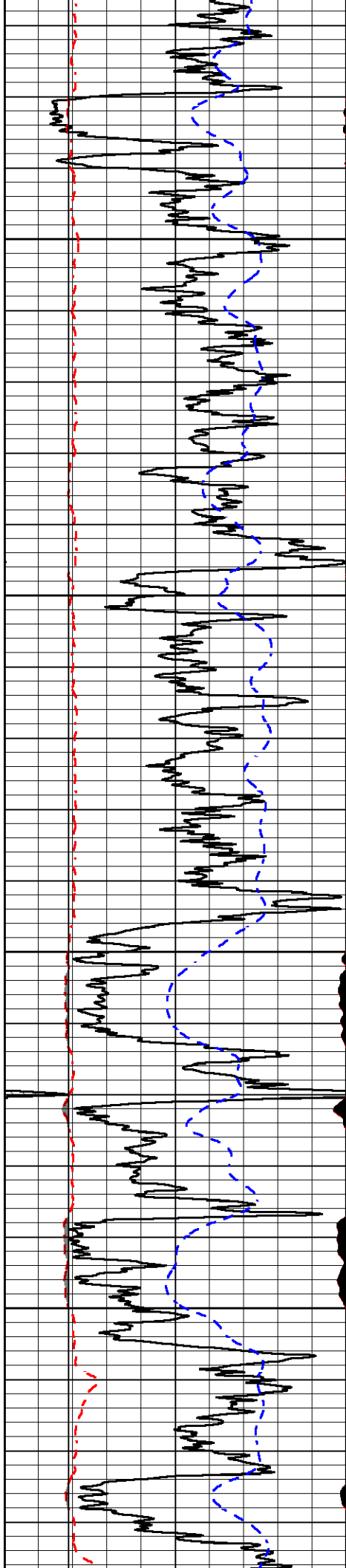
0	Micro Inverse 1 X 1 (Ohm-m)	40
0	Micro Normal 2" (Ohm-m)	40
10000	Line Weight (lb)	0



3650

3700



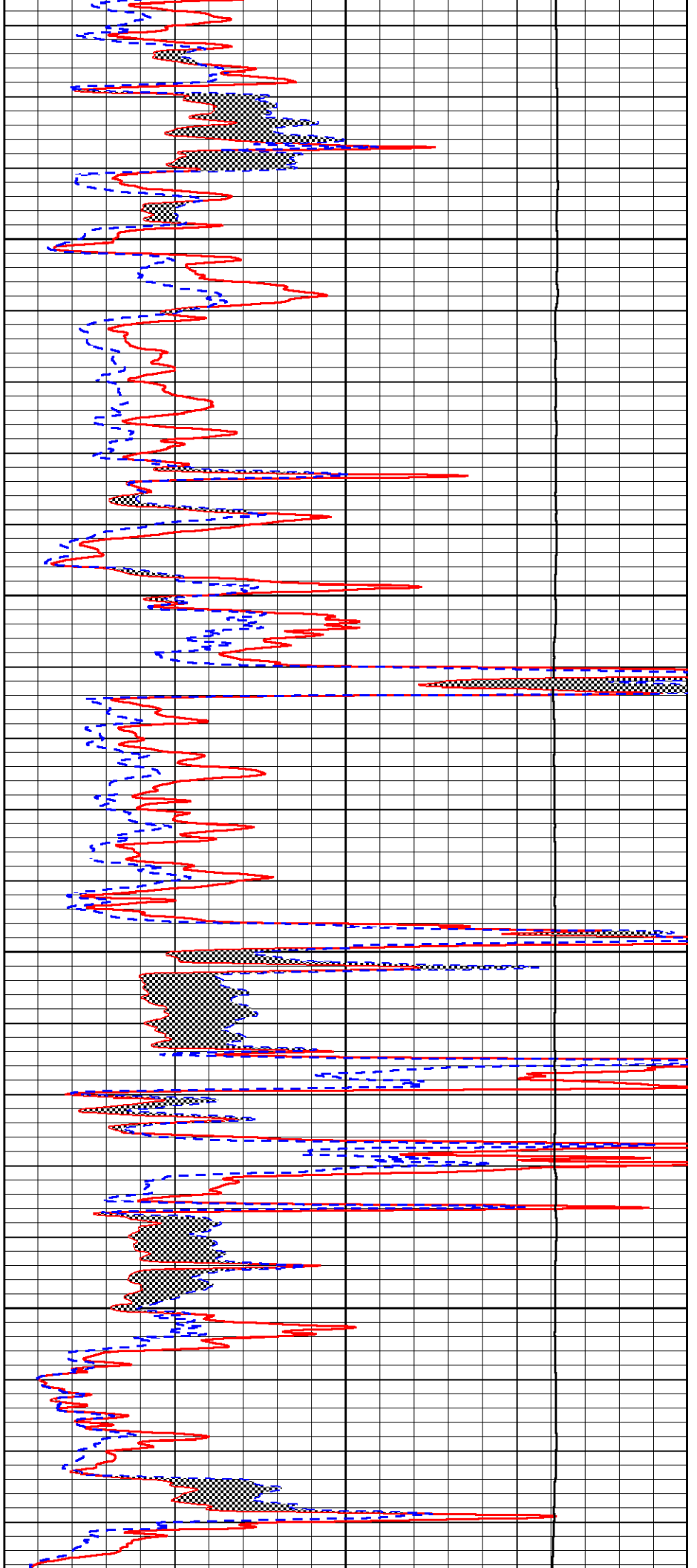


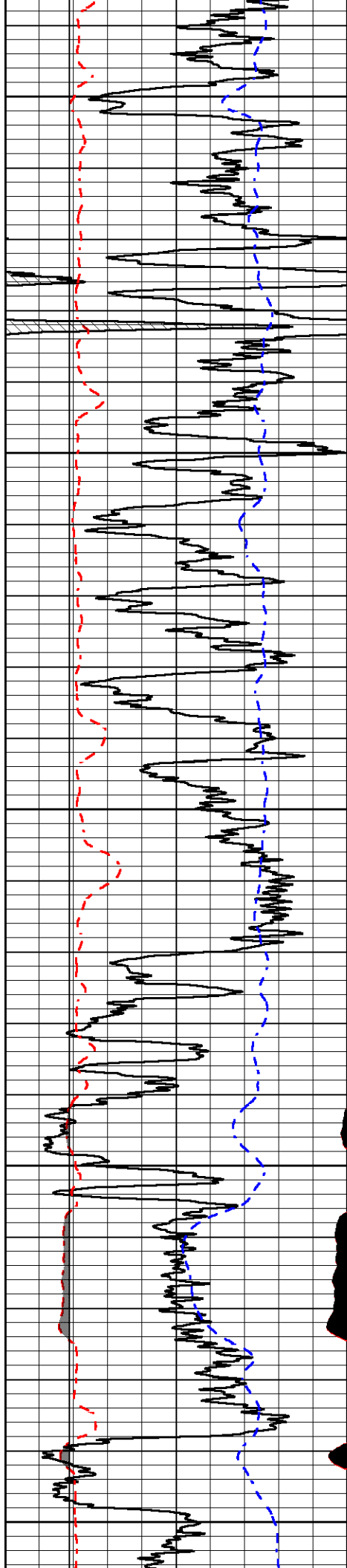
3750

3800

3850

3900





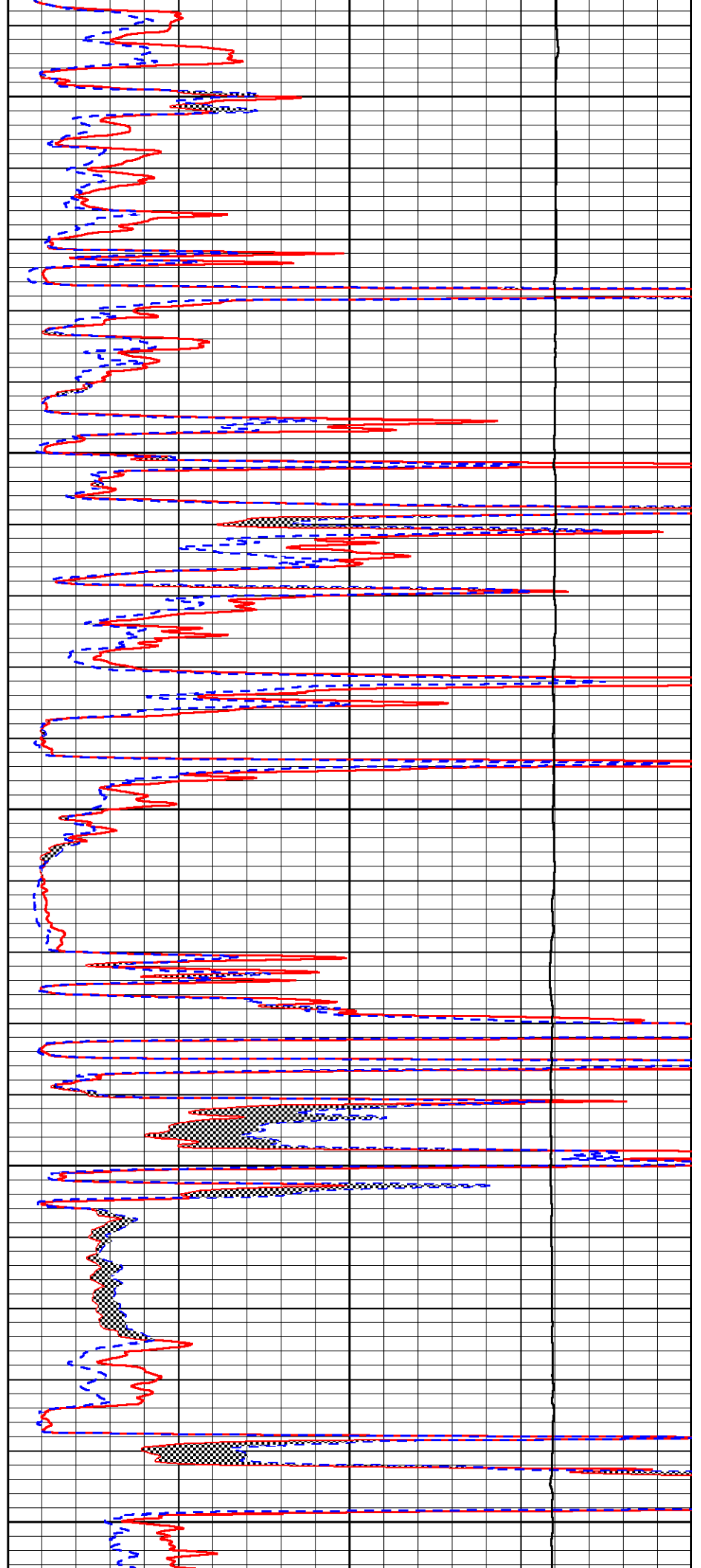
3950

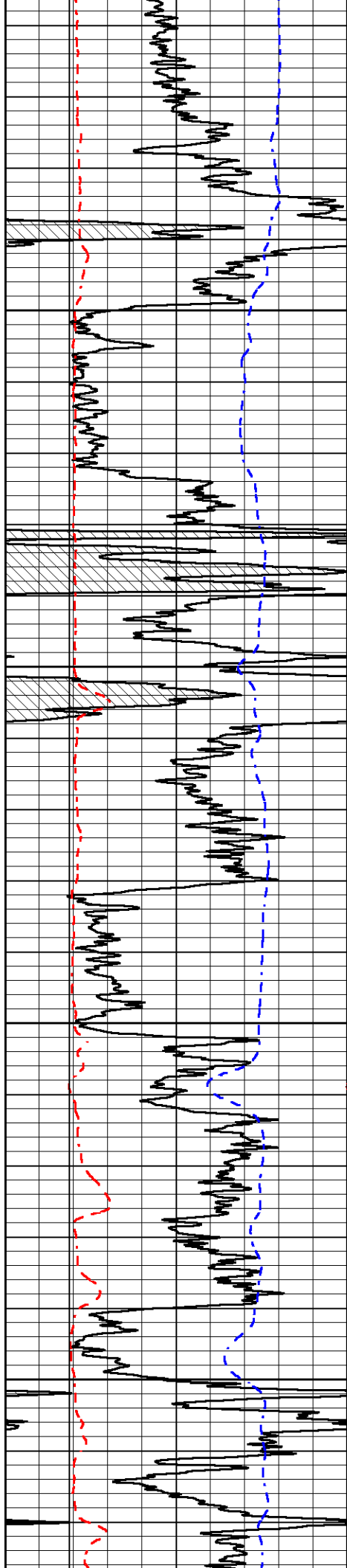
4000

4050

4100

4150



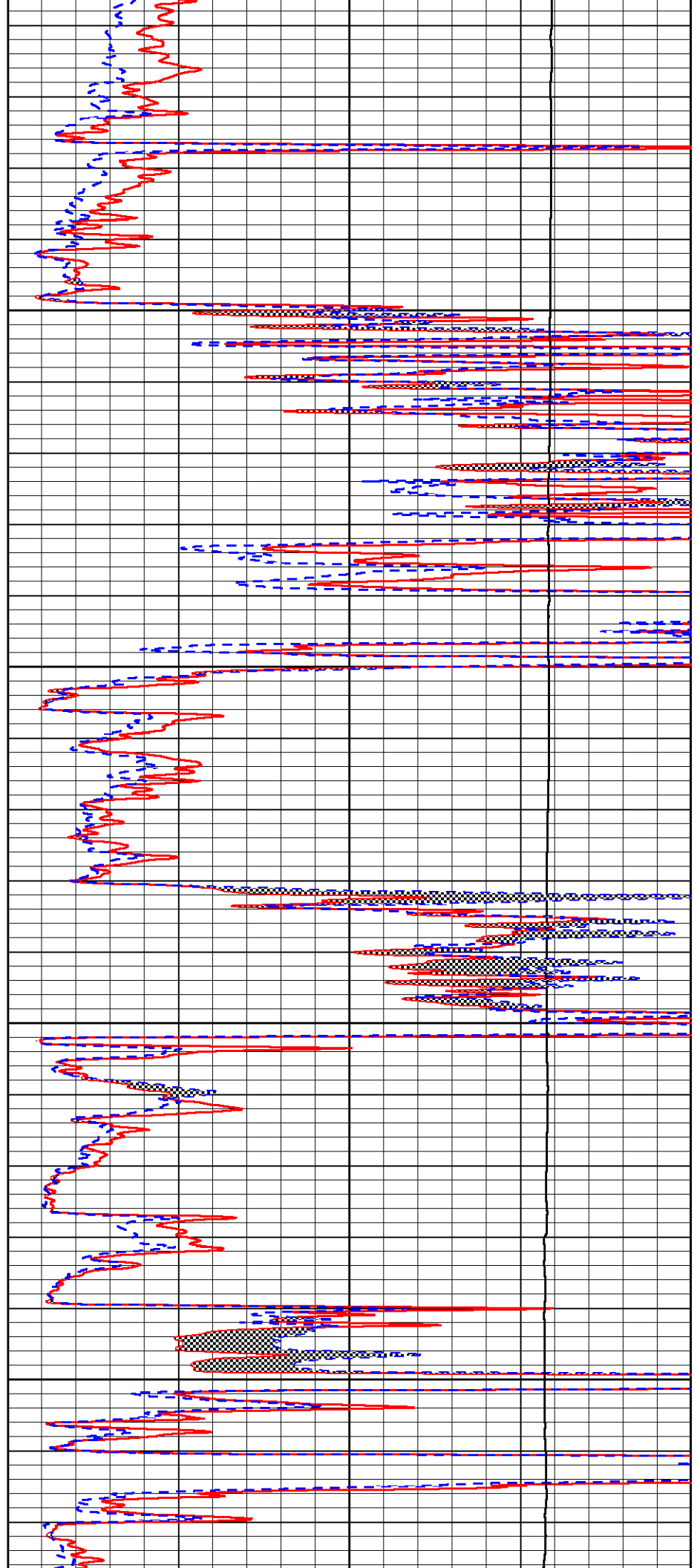


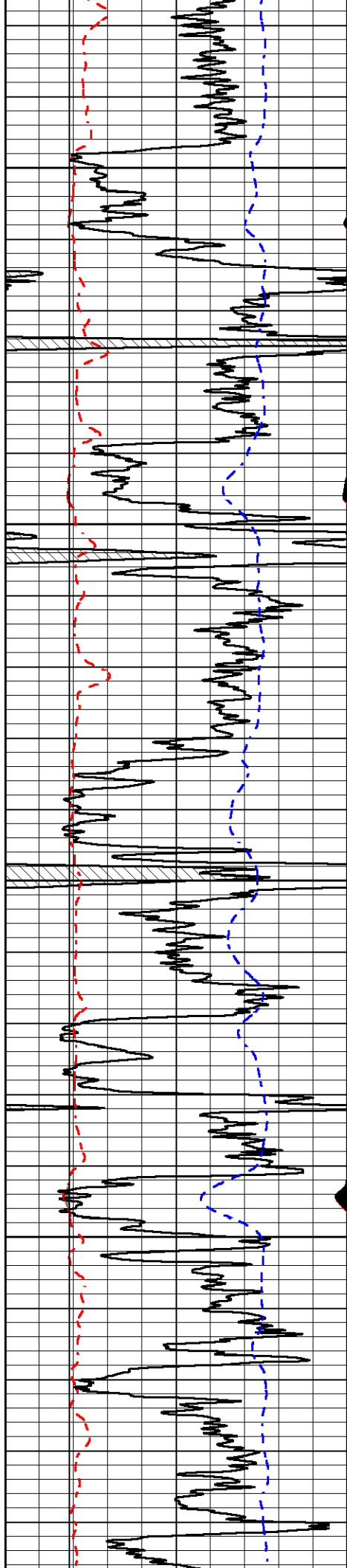
4200

4250

4300

4350



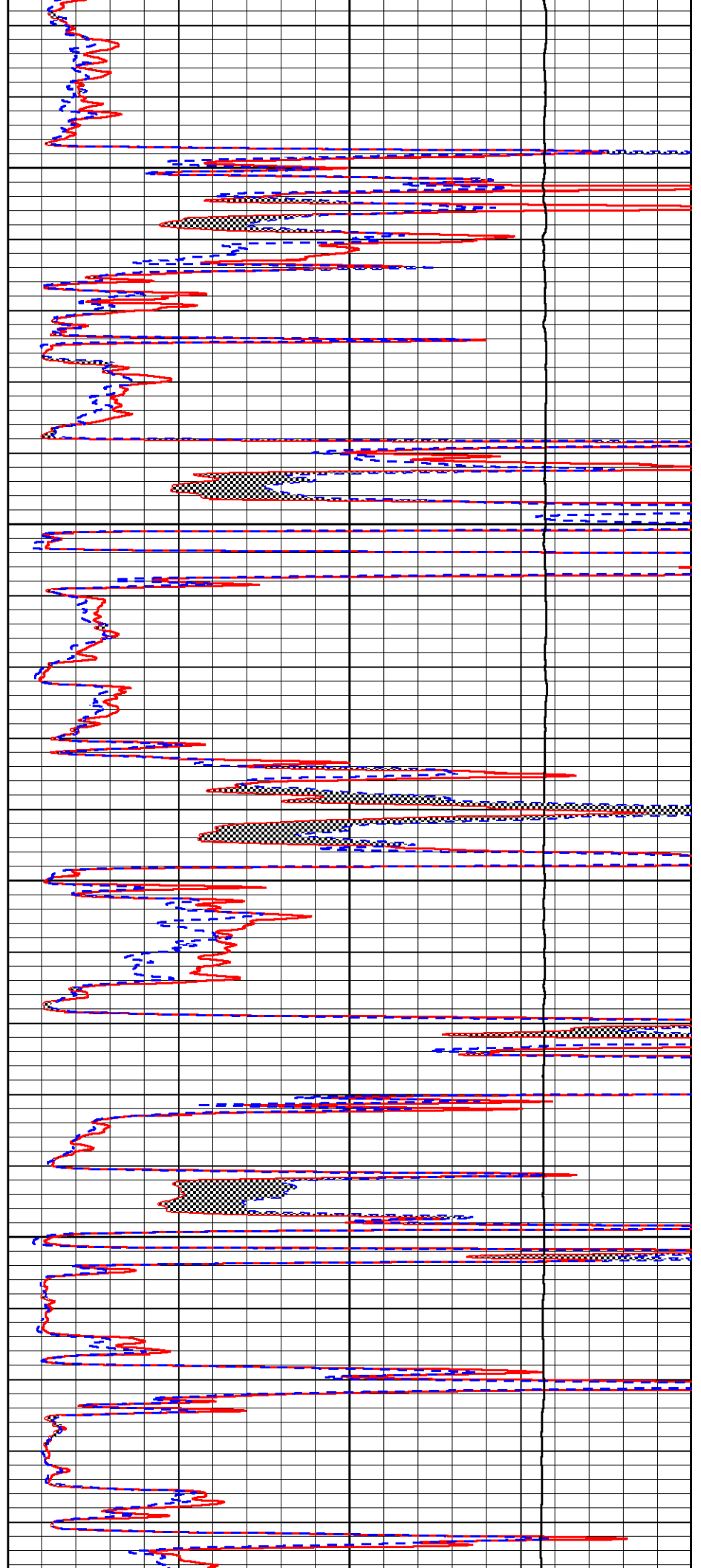


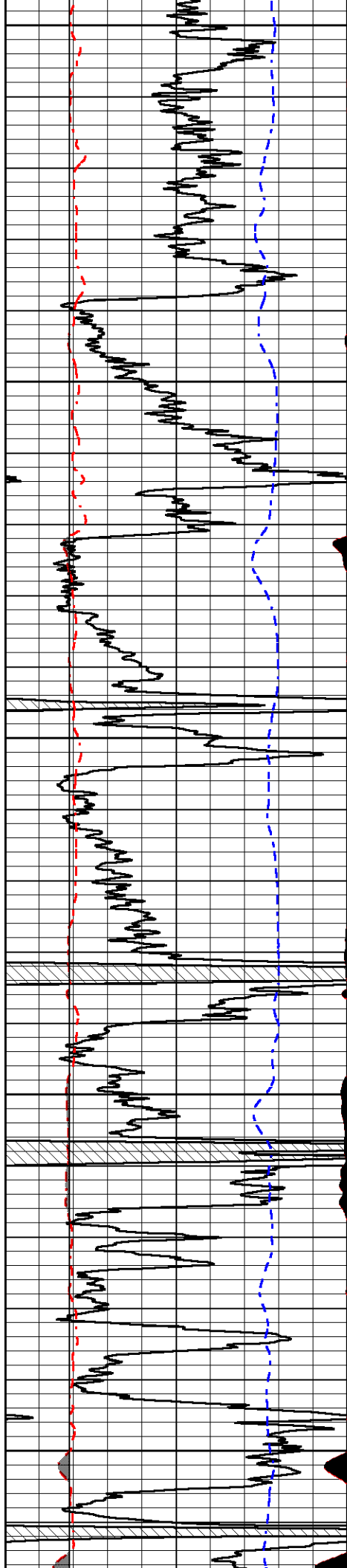
4400

4450

4500

4550





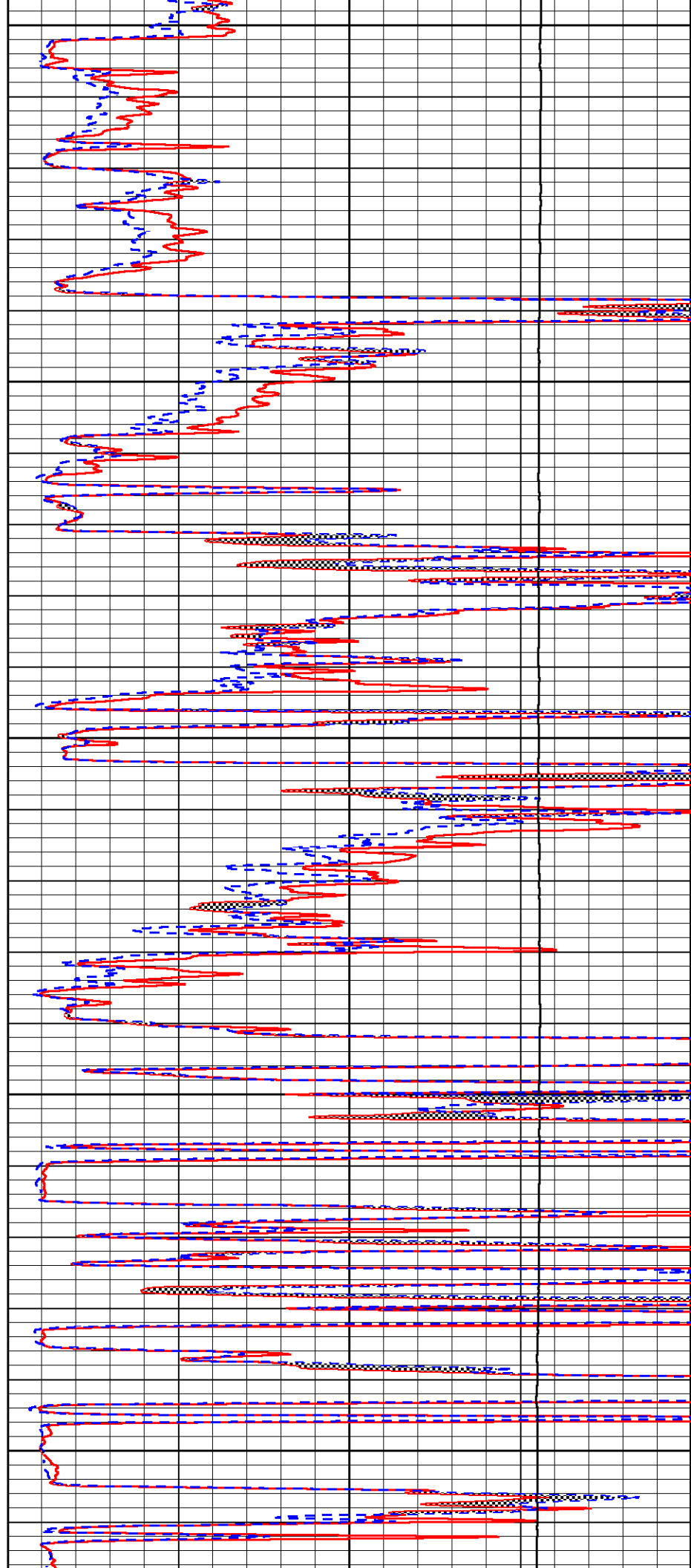
4600

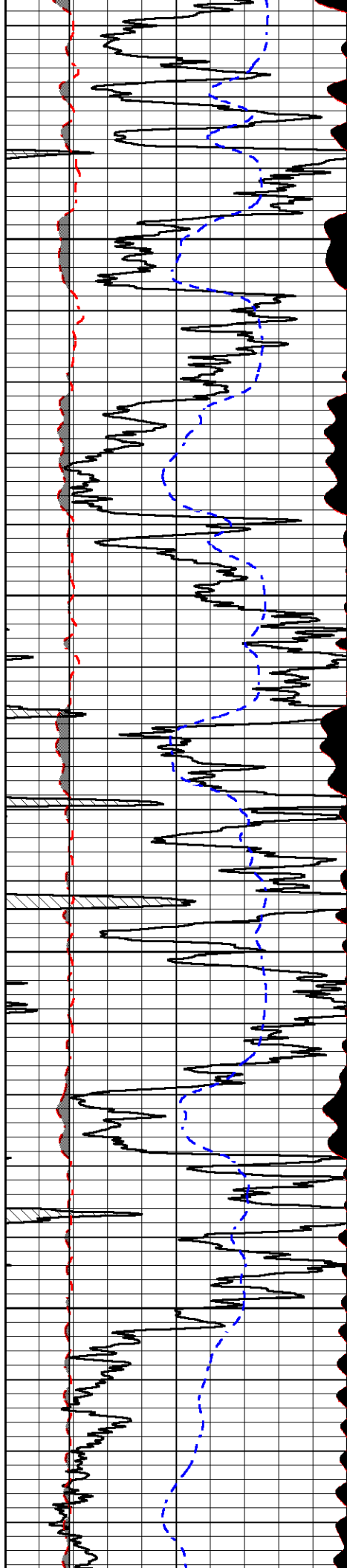
4650

4700

4750

4800



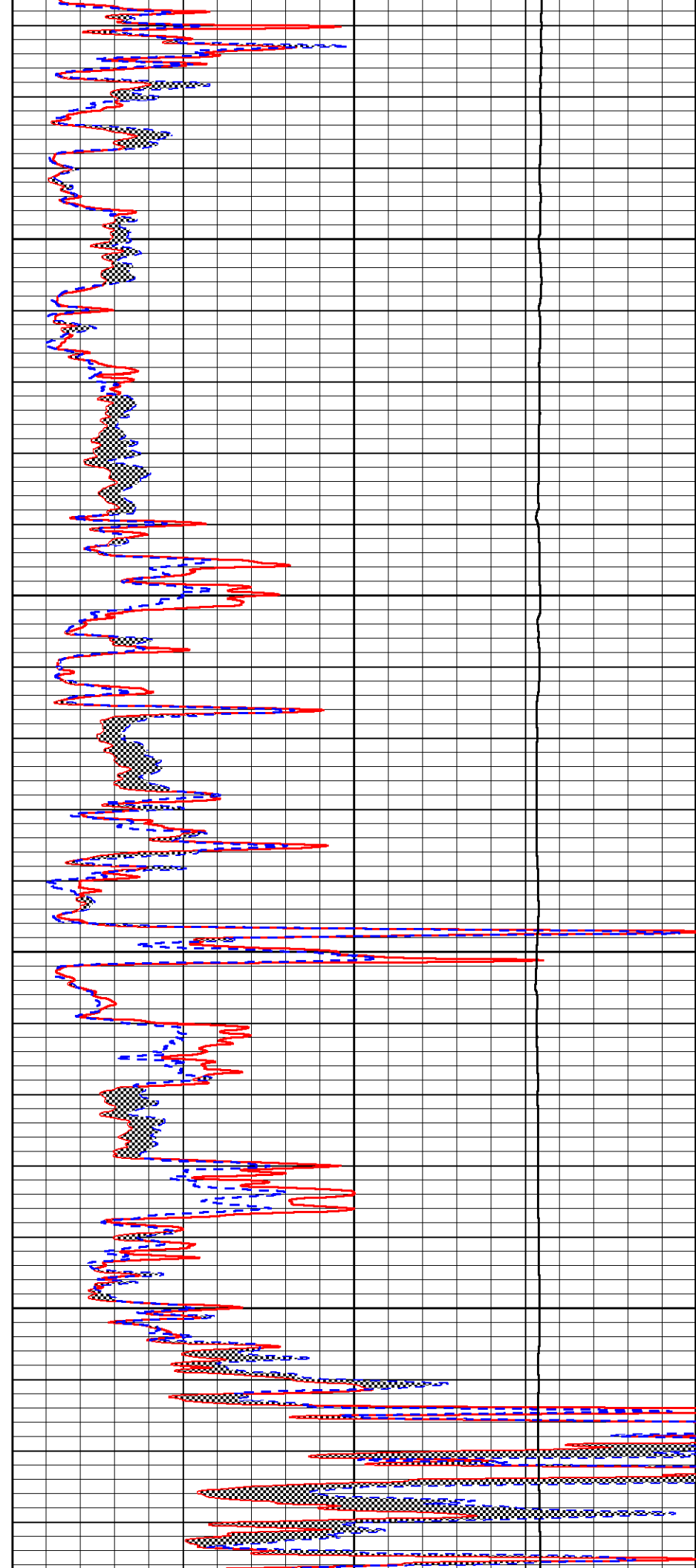


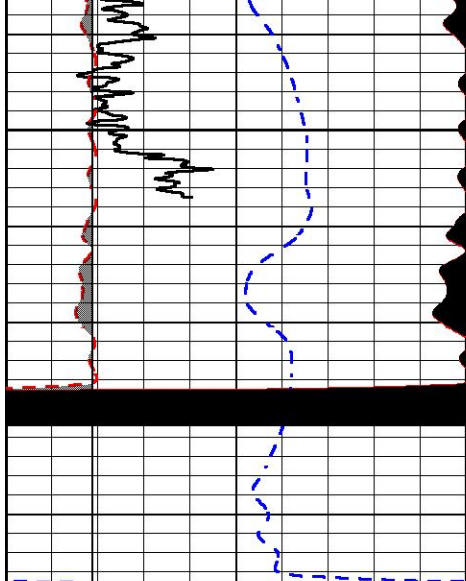
4850

4900

4950

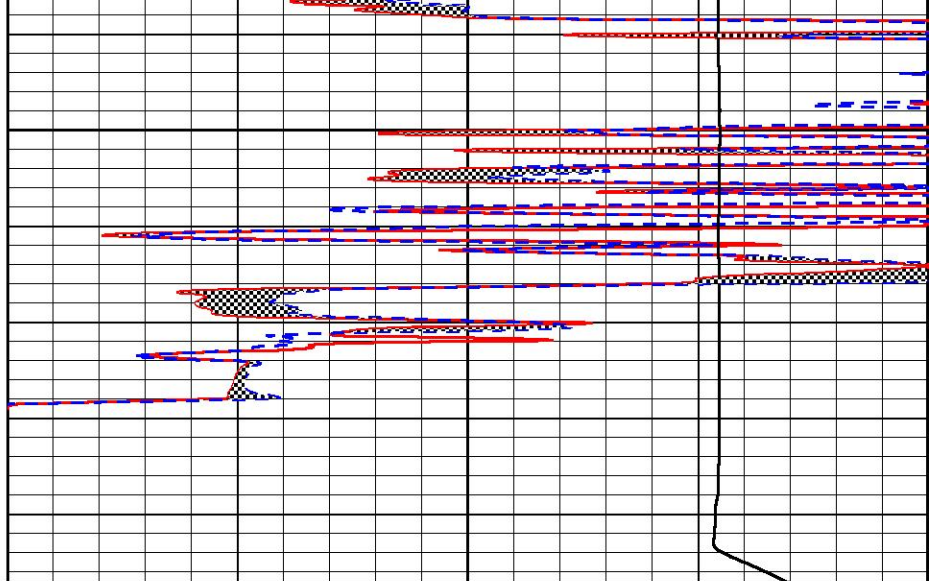
5000





5050

0	Gamma Ray (GAPI)	150
6	Caliper (in)	16
2.875	mcal (in)	7.875
-200	SP (mV)	0



0	Micro Inverse 1 X 1 (Ohm-m)	40
0	Micro Normal 2" (Ohm-m)	40
10000	Line Weight (lb)	0



MIDWEST WIRELINE

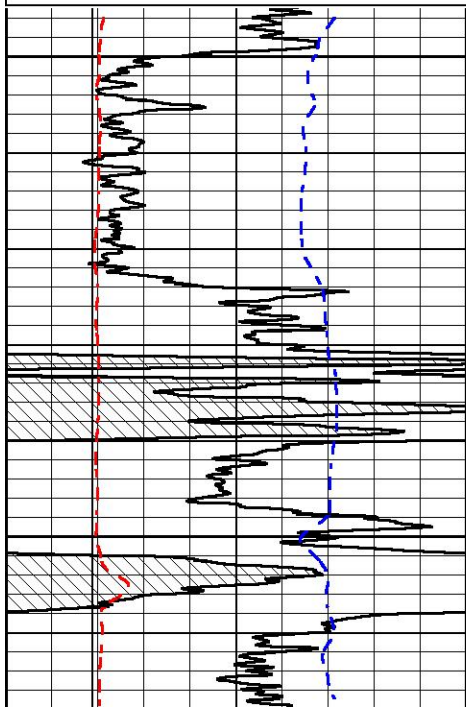
REPEAT SECTION

REPEAT PASS

Database File murfin_carolyn a #4-24.db
 Dataset Pathname StkMI/pass2.1
 Presentation Format _micro
 Dataset Creation Sat Mar 19 18:14:10 2022
 Charted by Depth in Feet scaled 1:240

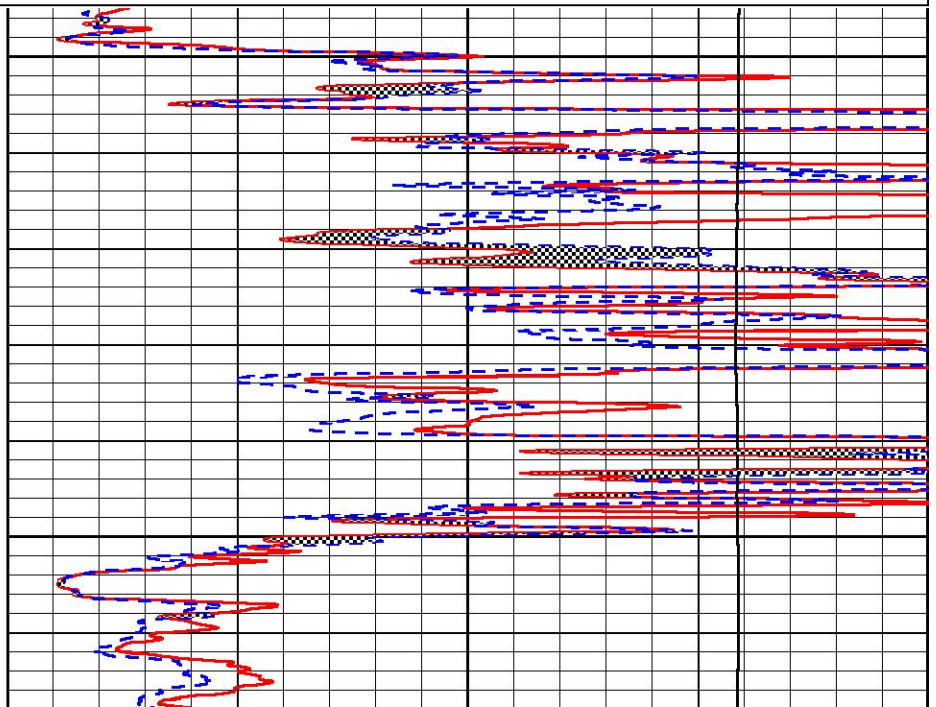
0	Gamma Ray (GAPI)	150
6	Caliper (in)	16
2.875	mcal (in)	7.875
-200	SP (mV)	0

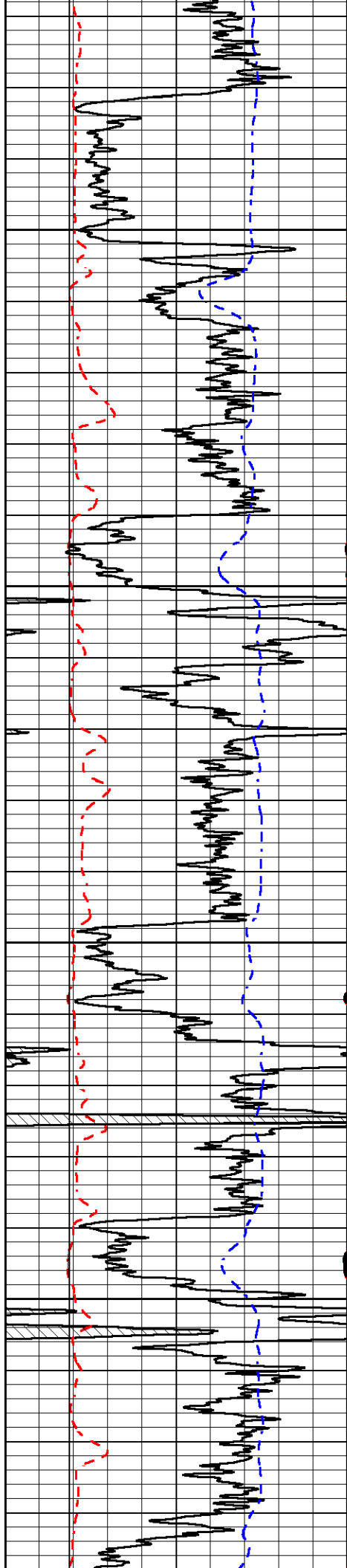
0	Micro Inverse 1 X 1 (Ohm-m)	40
0	Micro Normal 2" (Ohm-m)	40
10000	Line Weight (lb)	0



4200

4250



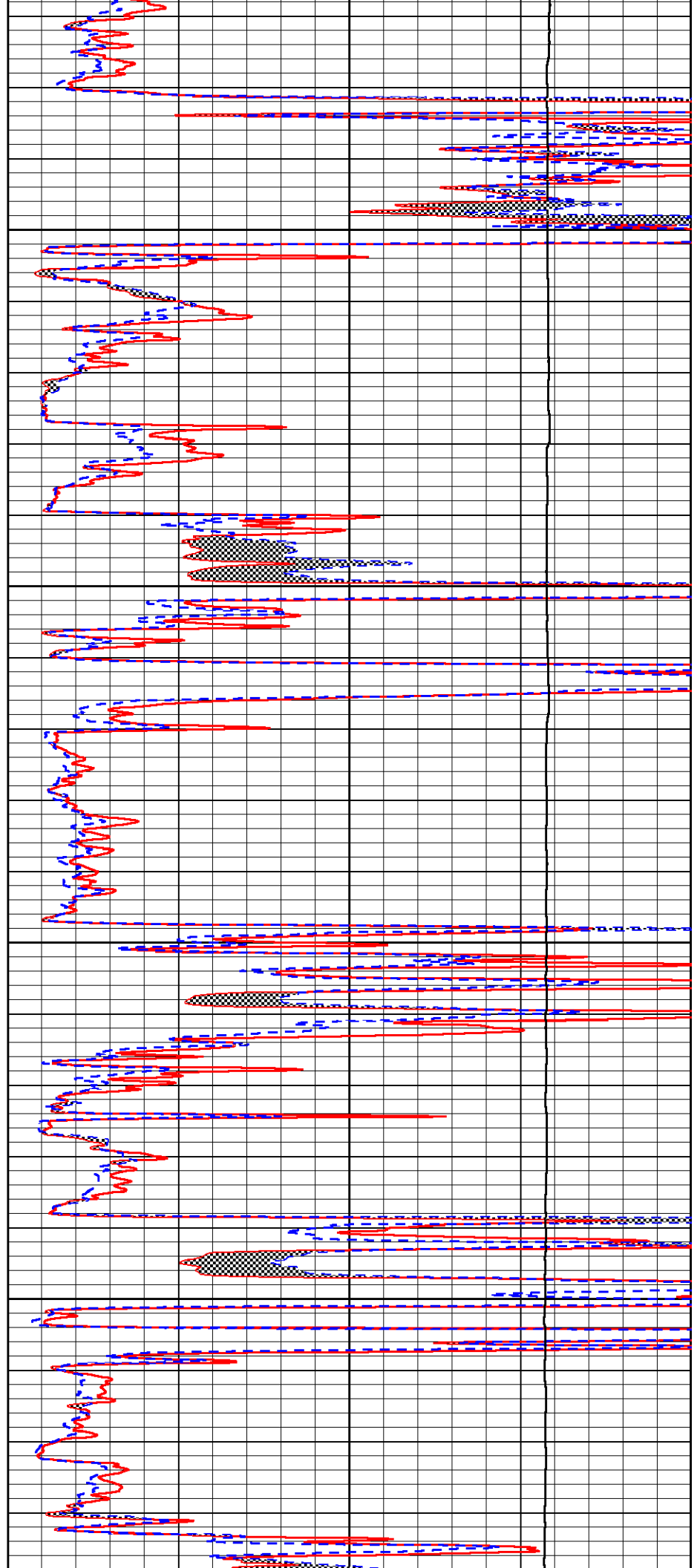


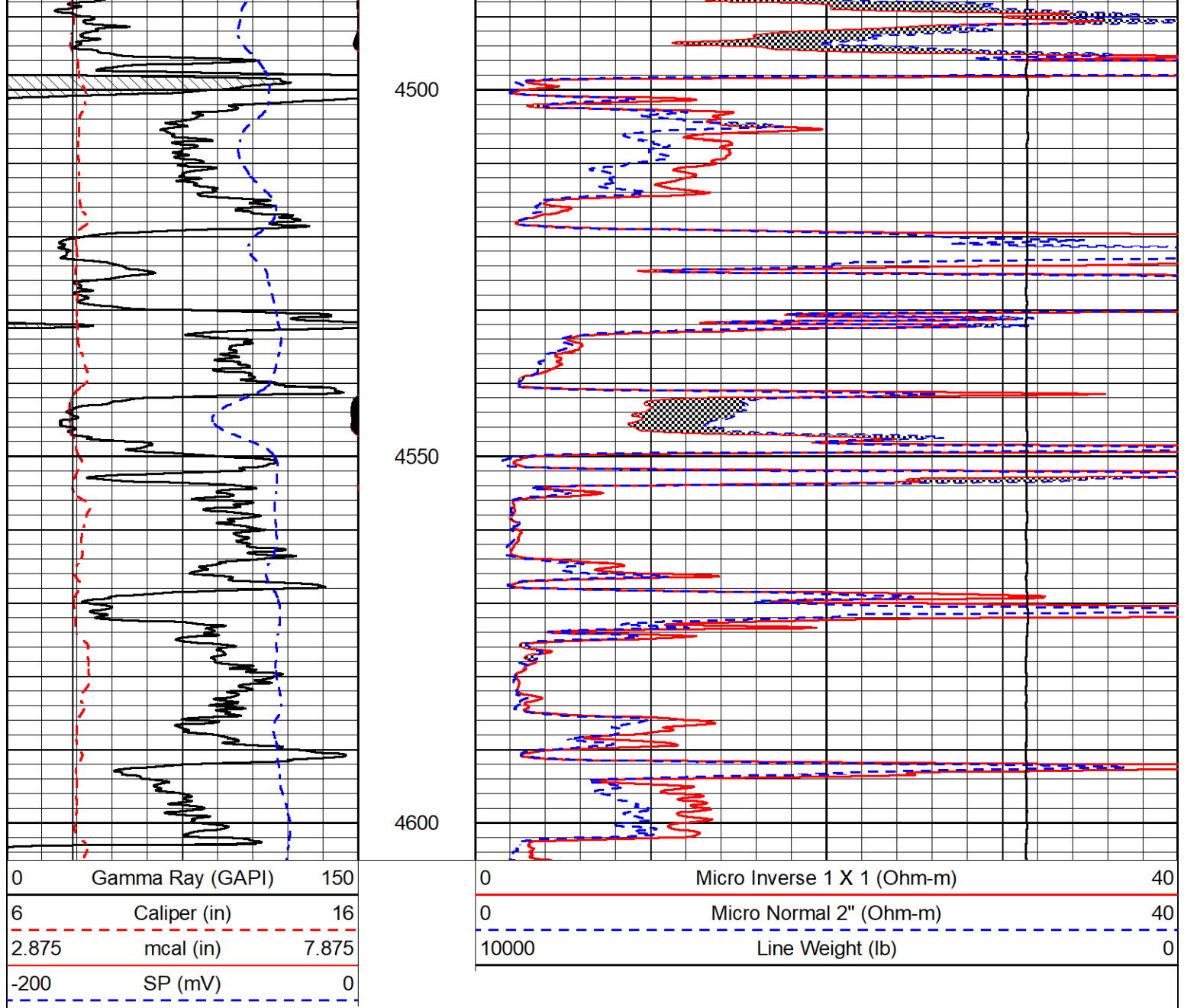
4300

4350

4400

4450





Calibration Report

Database File murfin_carolyn a #4-24.db
 Dataset Pathname StkMI/pass4.1
 Dataset Creation Sat Mar 19 19:04:42 2022

Dual Induction Calibration Report

Serial-Model: 504 HT-M&W
 Surface Cal Performed: Thu Dec 16 22:32:49 2021

Loop:	Readings		References		Results		
	Air	Loop	Air	Loop	m	b	
Deep	178.615	710.235	0.000	255.800	mmho/m	0.650	-19.000
Medium	161.982	1441.110	0.000	255.800	mmho/m	0.450	-47.500

Microlog Calibration Report

Serial-Model: 402-PSI STKBL ML
 Performed: Thu Dec 16 22:29:48 2021

	Readings		References			Results	
	Zero	Cal	Zero	Cal		m	b
Normal	0.0037	0.0043	0.0000	10.0000	Ohm-m	14000.0000	-0.5000
Inverse	0.1208	0.0013	0.0000	10.0000	Ohm-m	13250.0000	0.0000
Caliper	1.0020	1.0834	5.5000	16.5000	in	135.1520	-131.1000

Compensated Density Calibration Report

Serial-Model: 303-03-M&W
Source #: 21170B
Master Calibration Performed: Thu Dec 16 23:28:34 2021

Master Calibration

	Density		Far Detector	Near Detector	
Magnesium	1.755	g/cc	3841.78	5151.73	cps
Aluminum	2.670	g/cc	700.98	3068.49	cps
Spine Angle = 73.06			Density/Spine Ratio = 0.515		
	Size		Reading		
Small Ring	4.00	in	1.17		
Large Ring	14.00	in	1.04		

Compensated Neutron Calibration Report

Serial-Model: 210-M&W
Source #: N-1238
Master Calibration Performed: Fri Dec 3 09:16:24 2021

Master Calibration

Detector	Readings	Target	Normalization
Short Space	6240.00 cps	1000.00 cps	1.6025
Long Space	460.00 cps	1000.00 cps	1.9500

Gamma Ray Calibration Report

Serial Number: 103
Tool Model: M&W
Performed: Fri Dec 3 12:13:24 2021

Calibrator Value: 500.0 GAPI

Background Reading: 28.0 cps
Calibrator Reading: 986.0 cps

Sensitivity: 0.5700 GAPI/cps



Company Murfin Drilling Company, Inc.
Well Carolyn A #4-24
Field Unnamed
County Cheyenne
State Kansas

