



MIDWEST WIRELINE

DUAL COMP POROSITY LOG

Company **Darrah Oil Company, LLC**
 Well **Wyly A #3**
 Field **Pritchard**
 County **Barton** State **Kansas**

Company **Darrah Oil Company, LLC**
 Well **Wyly A #3**
 Field **Pritchard**
 County **Barton**
 State **Kansas**

Location: **1542 FSL & 1872 FEL**
SEC 26 TWP 20S RGE 14W
 Permanent Datum **Ground Level** Elevation **1898**
 Log Measured From **Kelly Bushing**
 Drilling Measured From **Kelly Bushing**
 Other Services **DIL/MEL BHCS**
 K.B. **1909**
 D.F. **1898**
 G.L.

Date **3/9/2022**

Run Number	One
Type Log	CNL/CDL
Depth Driller	3551
Depth Logger	3550
Bottom Logged Interval	3548
Top Logged Interval	2700
Type Fluid In Hole	Chemical
Salinity, PPM CL	6000
Density	9.1
Level	Full
Max. Rec. Temp. F	110
Operating Rig Time	4 Hours
Equipment -- Location	P-24 Hays
Recorded By	D. Schmidt
Witnessed By	Roger Martin

Run No.	Bit	Borehole Record			Casing Record		
		From	To	Size	Wgt.	From	To
One	12.25	0	333	8.625	23	0	333
Two	7.875	333	TD				

<<< Fold Here >>>

All interpretations are opinions based on inferences from electrical or other measurements and Midwest Wireline Services, LLC cannot and does not guarantee the accuracy or correctness of any interpretation, and Midwest Wireline Services, LLC will not be liable or responsible for any loss, costs, damages, or expenses incurred or sustained by anyone resulting from any interpretation made by any of our officers, agents or employees.

Comments

N/A DENOTES NOT AVAILABLE OR NON-APPLICABLE.

**Great Bend,
 South to 50th, West to 40th, 3/4 South,
 West into**

Log Measured From: Kelly Bushing 5 Ft. Above Permanent Datum

**THANK YOU FOR USING MIDWEST WIRELINE LLC
 785-625-3858**

Your Midwest Wireline Crew

Engineer: **D. Schmidt**
 Operator:
 Operator:
 Operator:

This Log Record Was Witnessed By

Primary Witness: **Roger Martin**
 Secondary Witness:
 Secondary Witness:
 Secondary Witness:

Sensor	Offset (ft)	Schematic	Description	Length (ft)	O.D. (in)	Weight (lb)
GR	32.75		GR-M&W (101)	3.00	3.50	50.00
CNLSC CNSSC	29.65 28.90		CNT-M&W (207-MW)	5.00	3.50	100.00
LSD DCAL SSD	20.60 20.58 20.10		CDL-M&W (305-05)	8.50	4.00	250.00
RLL3F RLL3	15.50 15.50		DIL-M&W (501 HT)	18.25	3.50	220.00
CILD	8.33		CILM	4.50		
SP	0.20					

Dataset: darrah_wyly a 3.db: field/well/stack/pass5.1
 Total length: 34.75 ft
 Total weight: 620.00 lb
 O.D.: 4.00 in

Log Variables

DatabaseC:\ProgramData\Warrior\Data\darrah_wyly a 3.db
 Dataset field/well/stack/pass5.1/_vars_

Top - Bottom

A	BOREID in	BOTTEMP degF	CASEOD in	CASETHCK in	FLUIDDEN g/cc	M	MATRXDEN g/cc
1	7.875	110	5.5	0	1	2	2.71
NPORSEL	PERFS	SNDERR mmho/m	SNDERRM mmho/m	SPSHIFT mV	SRFTEMP degF	SZCOR	TDEPTH ft
Limestone	0	0	0	-110	30	Off	3351

Variable Description

A : Cement Factor (a)
 BOREID : Borehole I.D.
 BOTTEMP : Bottom Hole Temperature
 CASEOD : Casing O.D.
 CASETHCK : Casing Thickness
 FLUIDDEN : Fluid Density
 M : Cement Exp (m)
 MATRXDEN : Matrix Density

NPORSEL : Neutron Porosity Curve Select
 PERFS : Perforation Flag
 SNDERR : Deep Sonde Error Correction
 SNDERRM : Medium Sonde Error Correction
 SPSHIFT : S.P. Baseline Offset
 SRFTEMP : Surface Temperature
 SZCOR : CN Size Cor. ?
 TDEPTH : Total Depth



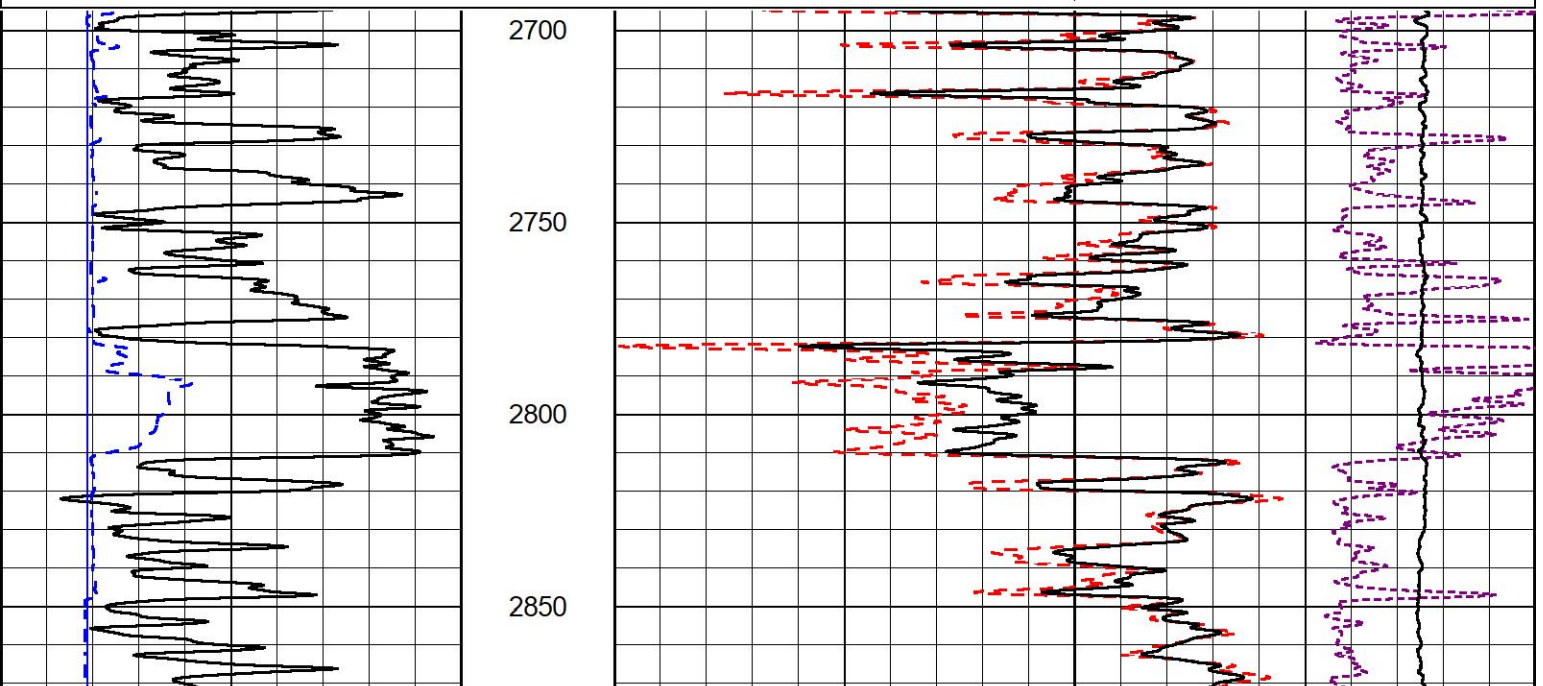
2" SCALE BULK DENSITY

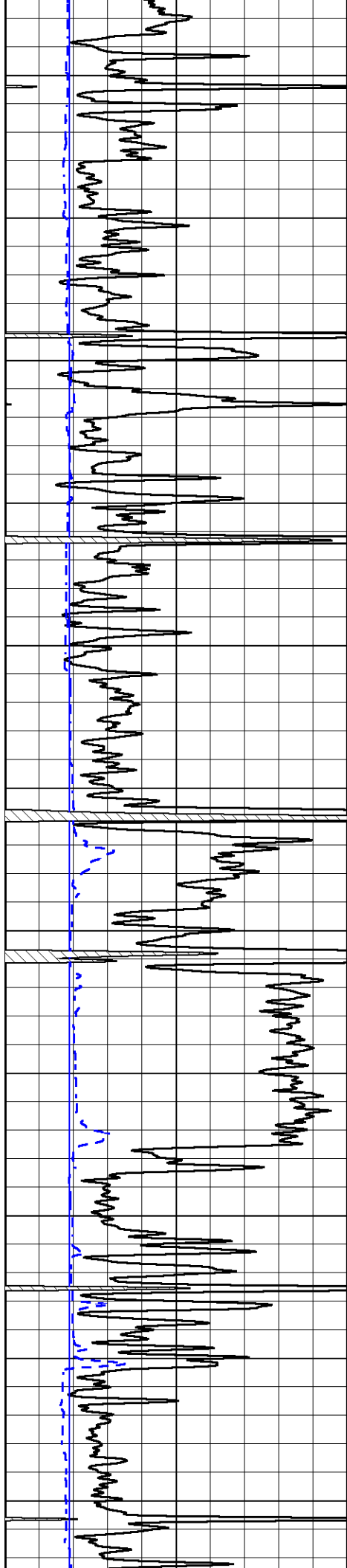
MAIN PASS

Database File darrah_wyly a 3.db
 Dataset Pathname stack/pass5.2
 Presentation Format _cdl
 Dataset Creation Wed Mar 09 12:59:15 2022
 Charted by Depth in Feet scaled 1:600

0	Gamma Ray (GAPI)	150
6	Caliper (in)	16

30	Compensated Density (pu)	-10
2	Bulk Density (g/cc)	3
10000	Line Tension (lb)	0
-0.25	Correction (g/cc)	0.25





2900

2950

3000

3050

3100

3150

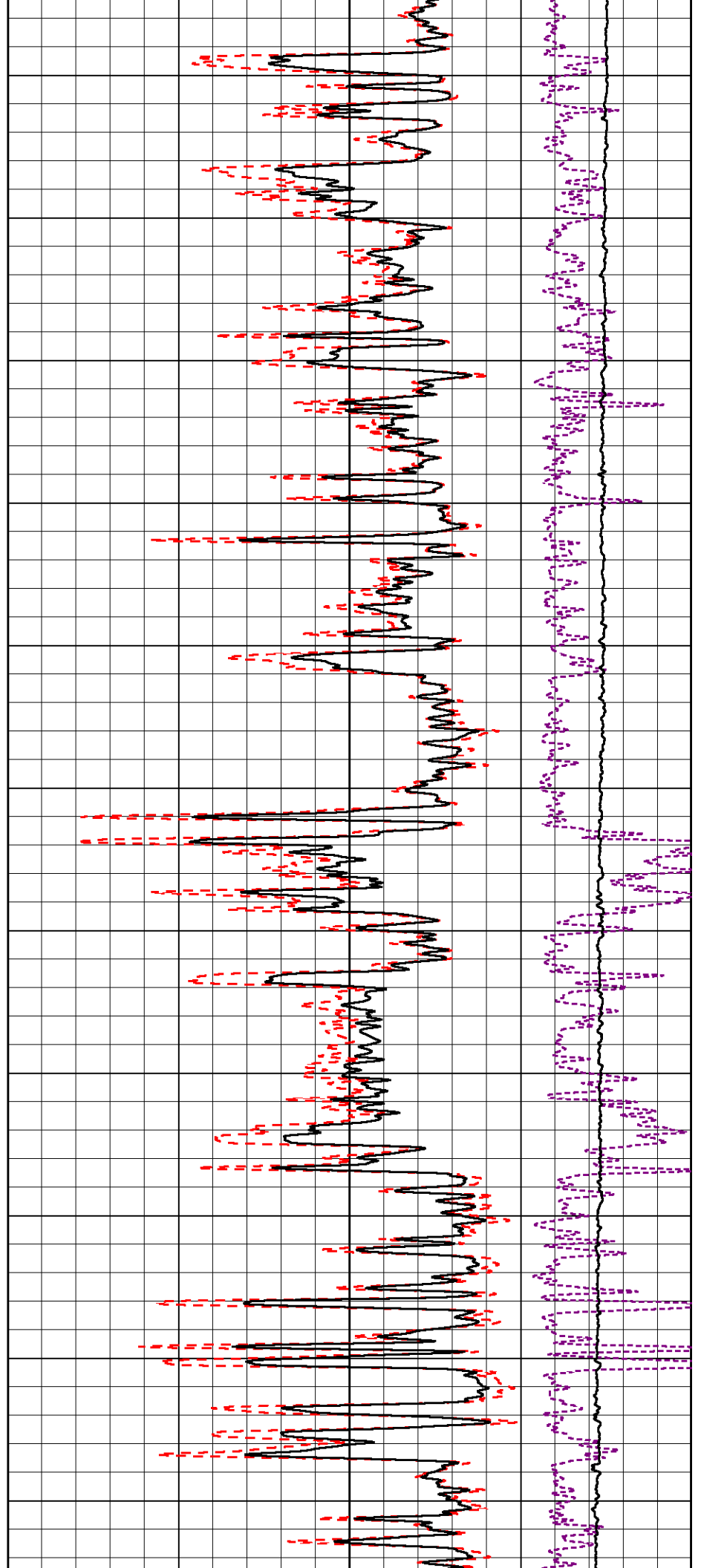
3200

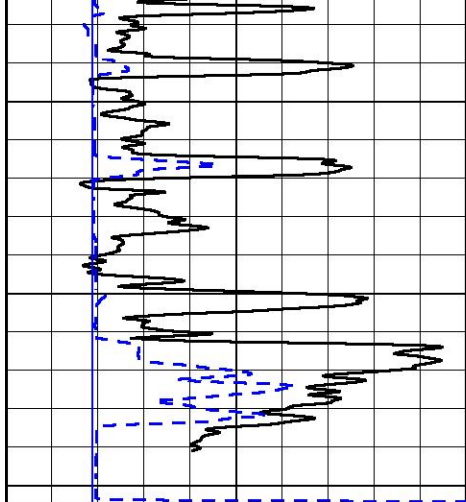
3250

3300

3350

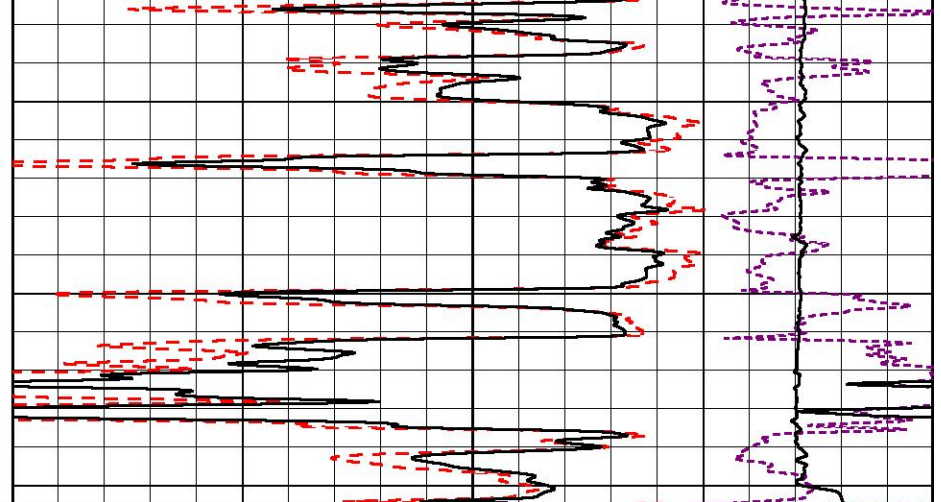
3400





3450
3500
3550

0 Gamma Ray (GAPI) 150
6 Caliper (in) 16



30 Compensated Density (pu) -10
2 Bulk Density (g/cc) 3
10000 Line Tension (lb) 0
-0.25 Correction (g/cc) 0.25



MIDWEST WIRELINE

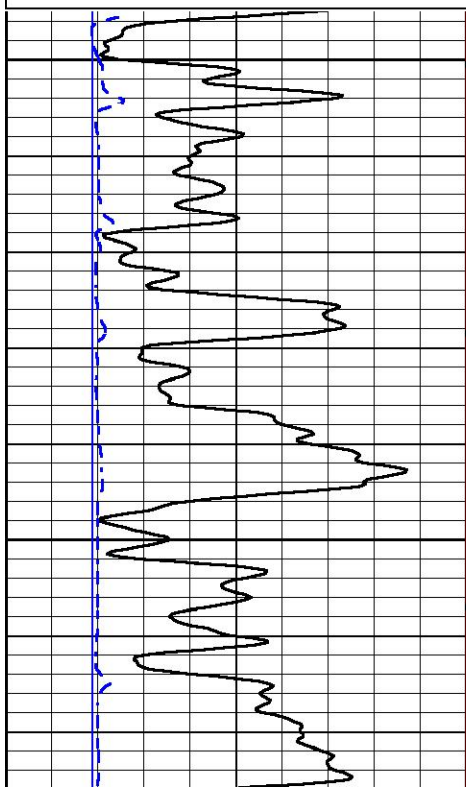
DETAIL SECTION

MAIN PASS

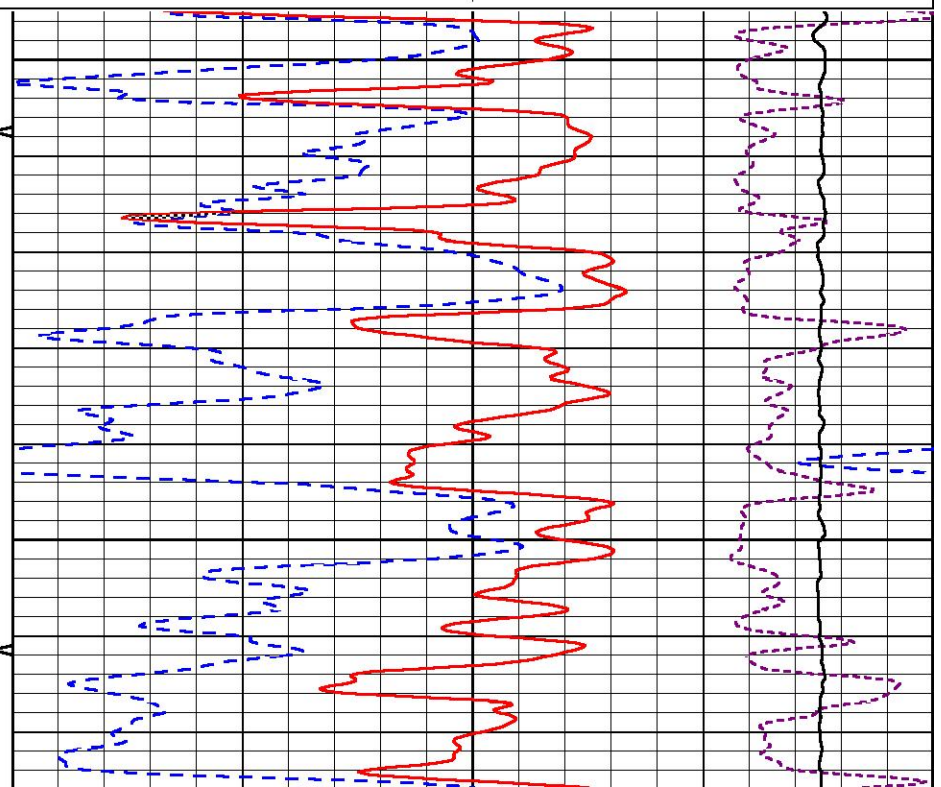
Database File darrah_wyly a 3.db
Dataset Pathname stack/pass5.1
Presentation Format _CNDLS~1
Dataset Creation Wed Mar 09 12:54:59 2022
Charted by Depth in Feet scaled 1:240

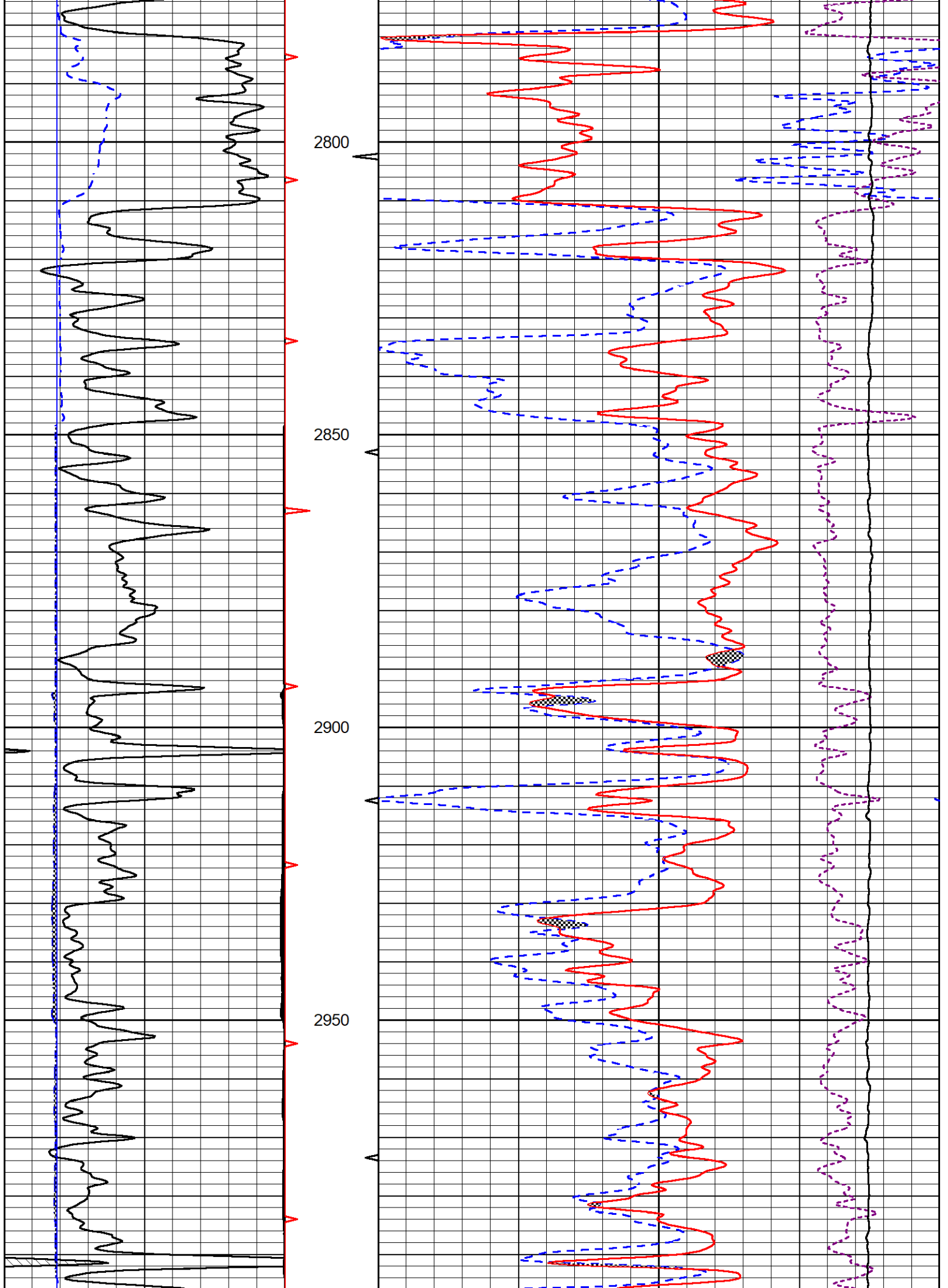
0 Gamma Ray (GAPI) 150
6 Caliper (in) 16

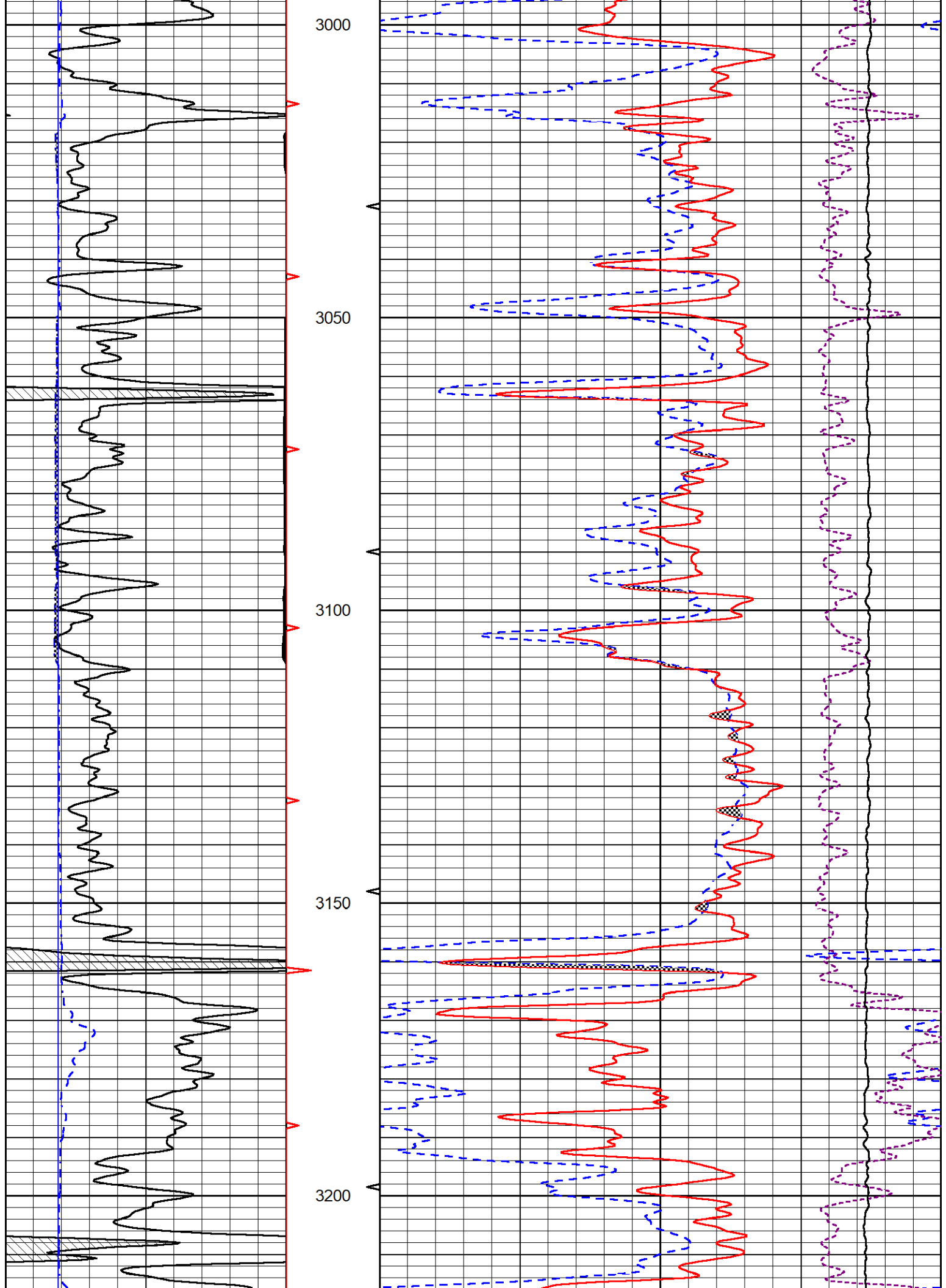
30 Compensated Neutron (pu) -10
30 Compensated Density (pu) -10
10000 Line Tension (lb) 0
-0.25 Correction (g/cc) 0.25

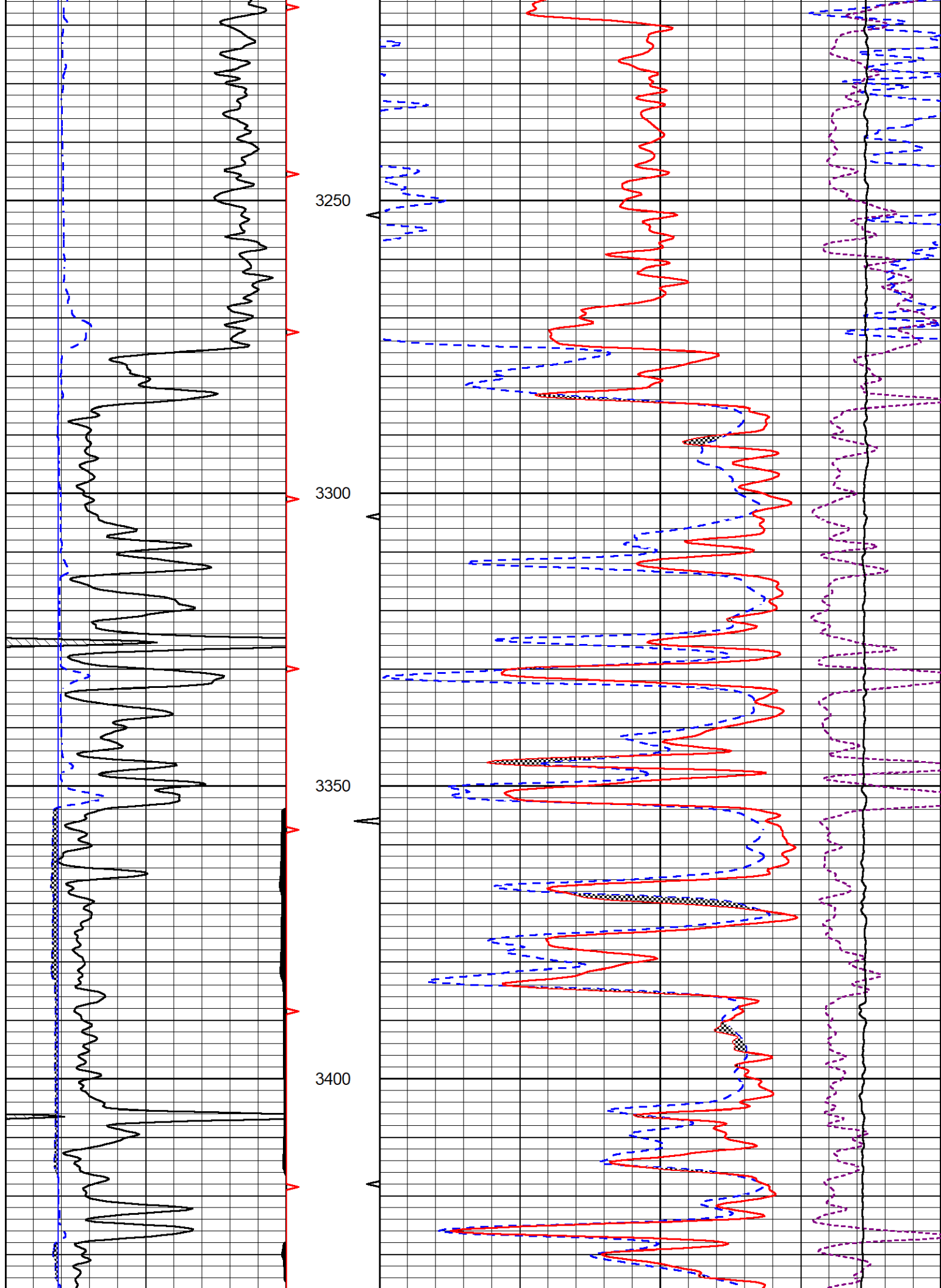


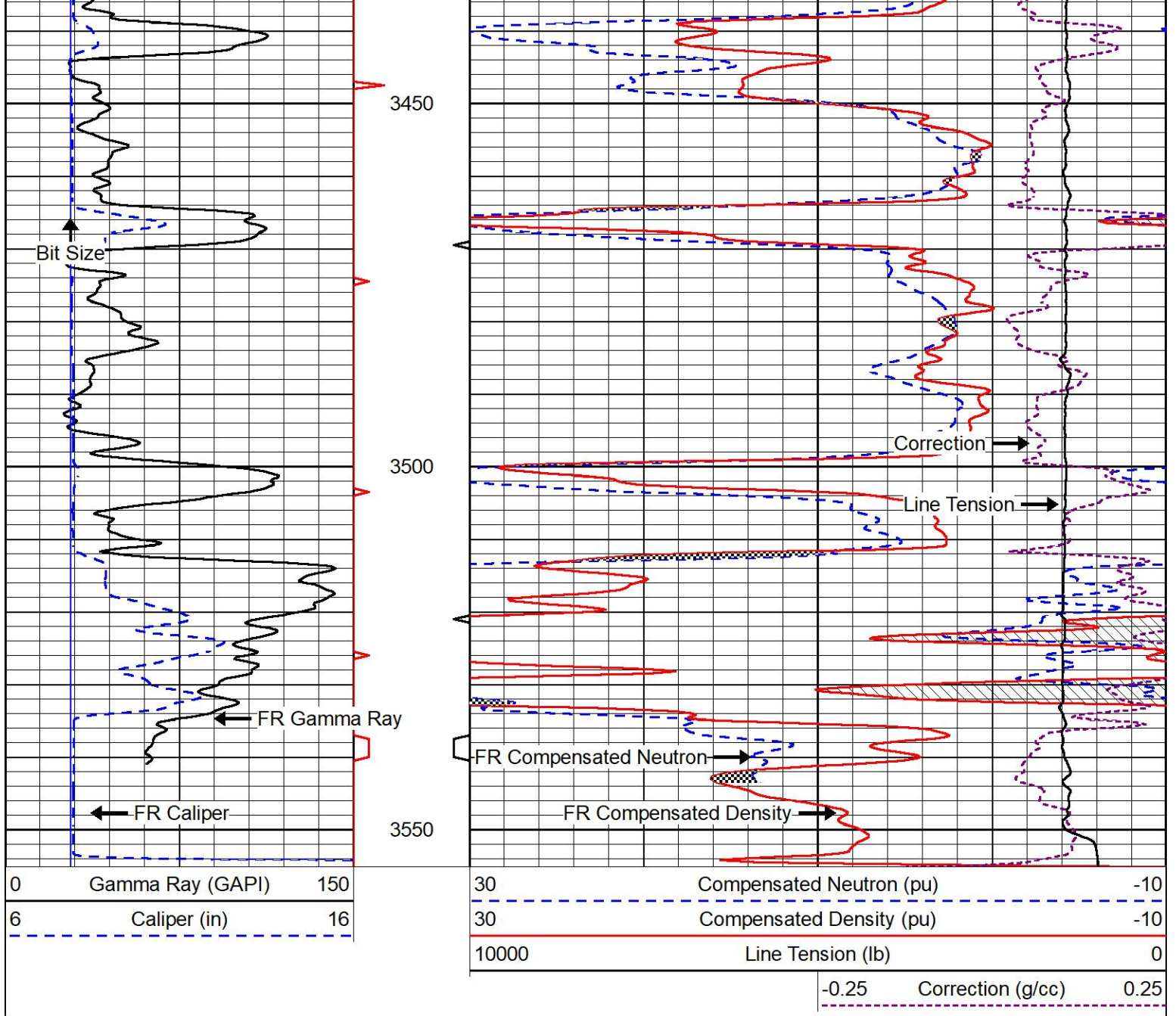
2700
2750









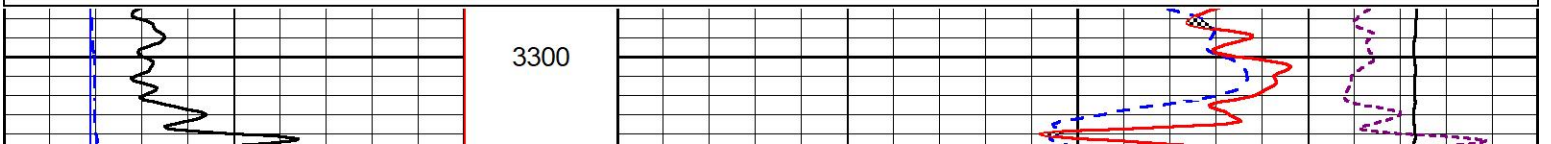


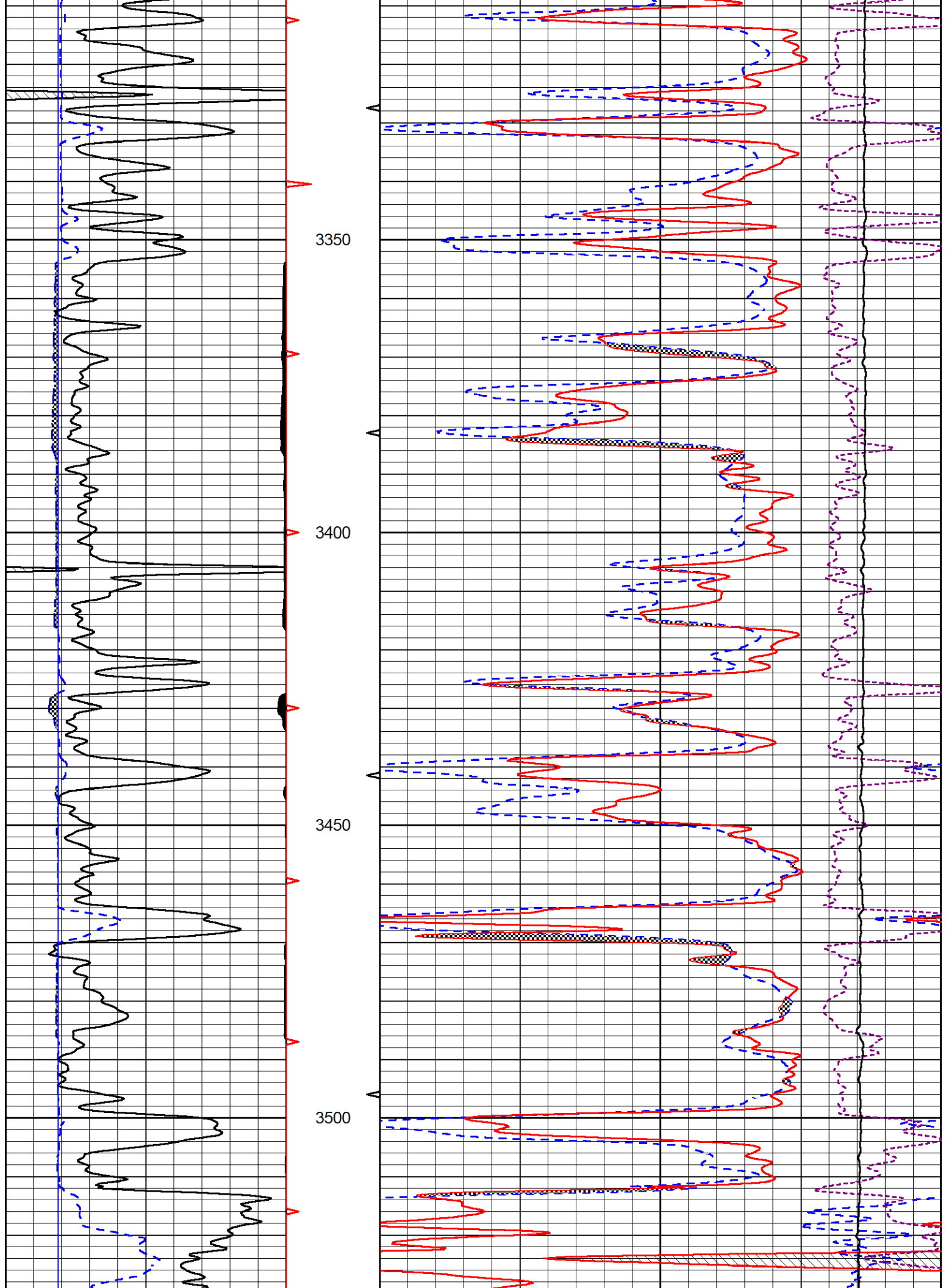
REPEAT SECTION

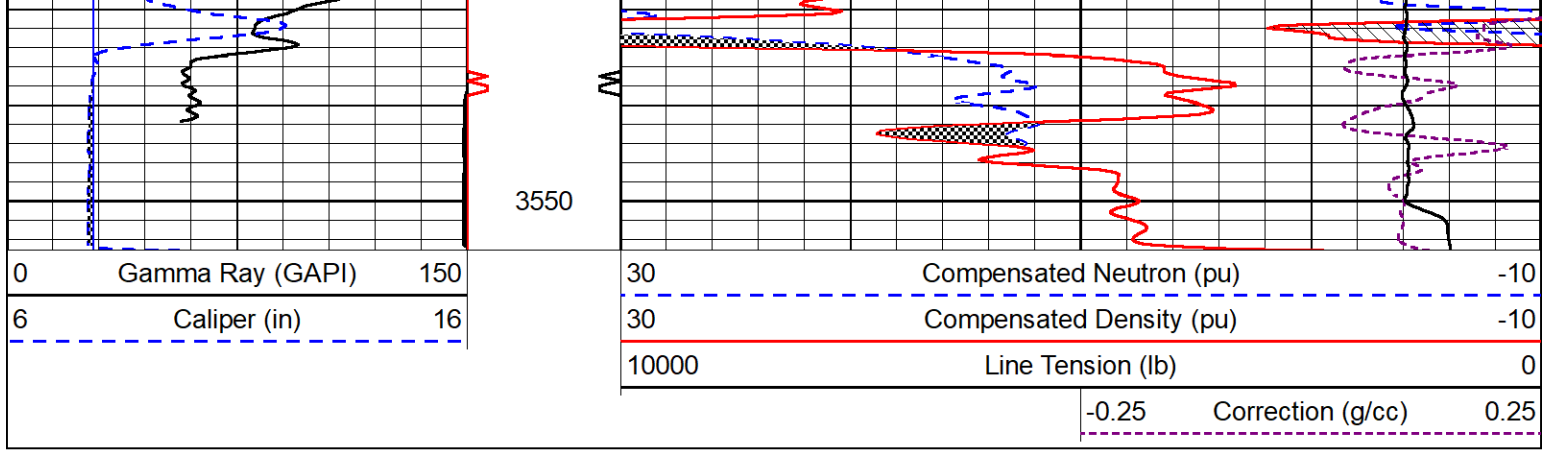
REPEAT PASS

Database File darrah_wyly a 3.db
 Dataset Pathname stack/pass4.1
 Presentation Format _CNDLS~1
 Dataset Creation Wed Mar 09 12:07:18 2022
 Charted by Depth in Feet scaled 1:240

0	Gamma Ray (GAPI)	150	30	Compensated Neutron (pu)	-10
6	Caliper (in)	16	30	Compensated Density (pu)	-10
			10000	Line Tension (lb)	0
			-0.25	Correction (g/cc)	0.25







Calibration Report

Database File darrah_wyly a 3.db
 Dataset Pathname stack/pass5.1
 Dataset Creation Wed Mar 09 12:54:59 2022

Dual Induction Calibration Report

Serial-Model: 501 HT-M&W
 Surface Cal Performed: Wed Feb 23 19:44:50 2022

Loop:	Readings		References			Results	
	Air	Loop	Air	Loop		m	b
Deep	83.639	487.104	0.000	183.000	mmho/m	0.455	-34.000
Medium	113.335	1585.690	0.000	442.000	mmho/m	0.320	-31.000

Compensated Density Calibration Report

Serial-Model: 305-05-M&W
 Source #: 20762B
 Master Calibration Performed: Mon Feb 28 14:58:34 2022

Master Calibration

	Density		Far Detector	Near Detector	
Magnesium	1.755	g/cc	8758.11	9709.36	cps
Aluminum	2.620	g/cc	1513.14	5652.54	cps
Spine Angle = 72.88			Density/Spine Ratio = 0.471		
	Size		Reading		
Small Ring	4.00	in	1.75		
Large Ring	14.00	in	1.38		

Compensated Neutron Calibration Report

Serial-Model: 207-MW-M&W
 Source #: 100046B
 Master Calibration Performed: Mon Nov 29 15:06:24 2021

Master Calibration

Detector	Readings	Target	Normalization
----------	----------	--------	---------------

Short Space	6240.00	cps	1000.00	cps	1.6025
Long Space	460.00	cps	1000.00	cps	1.9500

Gamma Ray Calibration Report

Serial Number:	101	
Tool Model:	M&W	
Performed:	Mon Jan 24 19:14:46 2022	
Calibrator Value:	500.0	GAPI
Background Reading:	24.0	cps
Calibrator Reading:	637.0	cps
Sensitivity:	0.5500	GAPI/cps



Company	Darrah Oil Company, LLC
Well	Wyly A #3
Field	Pritchard
County	Barton
State	Kansas