

Sensor	Offset (ft)	Schematic	Description	Length (ft)	O.D. (in)	Weight (lb)
MCAL MI MN	25.42 25.42 25.42		ML-GO (0002G)	5.00	3.50	100.00
			CENT-PENGO (4-PENGO)	4.25	3.00	70.00
WVF4 WVF1	12.50 12.50		SLT-PENGO (603)	15.92	3.50	300.00
WVF3 WVF2	10.50 10.50					
			CENT-PENGO (3-PENGO)	4.25	3.00	70.00

Dataset: darrah_wyly a 3.db: field/well/sonmel/pass3
 Total length: 29.42 ft
 Total weight: 540.00 lb
 O.D.: 3.50 in

Log Variables

DatabaseC:\ProgramData\Warrior\Data\darrah_wyly a 3.db
 Dataset field/well/stack/pass5.1/_vars_

Top - Bottom

A	BOREID in	BOTTEMP degF	CASEOD in	CASETHCK in	FLUIDDEN g/cc	M	MATRXDEN g/cc
1	7.875	110	5.5	0	1	2	2.71
NPORSEL	PERFS	SNDERR mmho/m	SNDERRM mmho/m	SPSHIFT mV	SRFTEMP degF	SZCOR	TDEPTH ft
Limestone	0	0	0	-110	30	Off	3351

Variable Description

A : Cement Factor (a)
 BOREID : Borehole I.D.
 BOTTEMP : Bottom Hole Temperature
 CASEOD : Casing O.D.
 CASETHCK : Casing Thickness
 FLUIDDEN : Fluid Density
 M : Cement Exp (m)
 MATRXDEN : Matrix Density

NPORSEL : Neutron Porosity Curve Select
 PERFS : Perforation Flag
 SNDERR : Deep Sonde Error Correction
 SNDERRM : Medium Sonde Error Correction
 SPSHIFT : S.P. Baseline Offset
 SRFTEMP : Surface Temperature
 SZCOR : CN Size Cor. ?
 TDEPTH : Total Depth

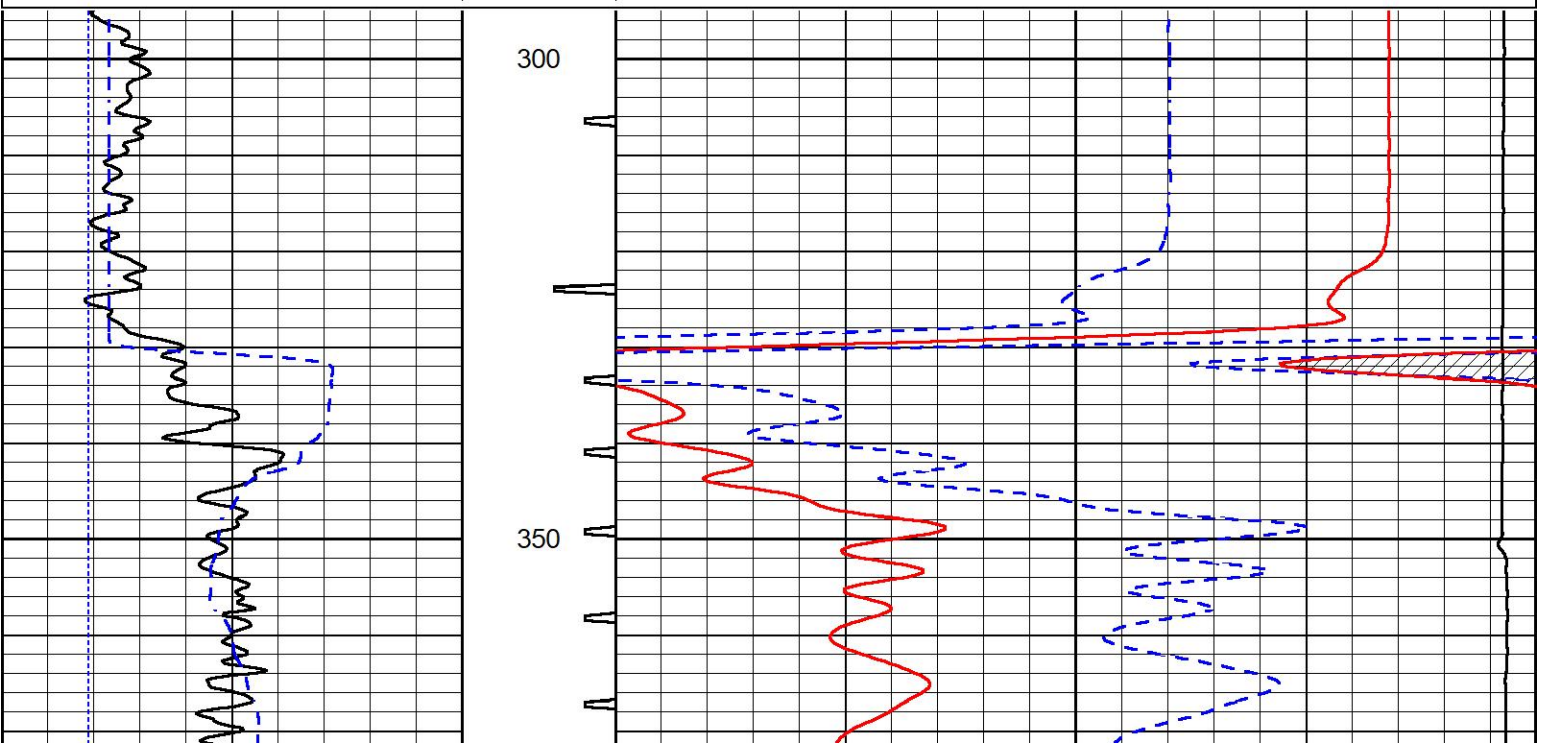


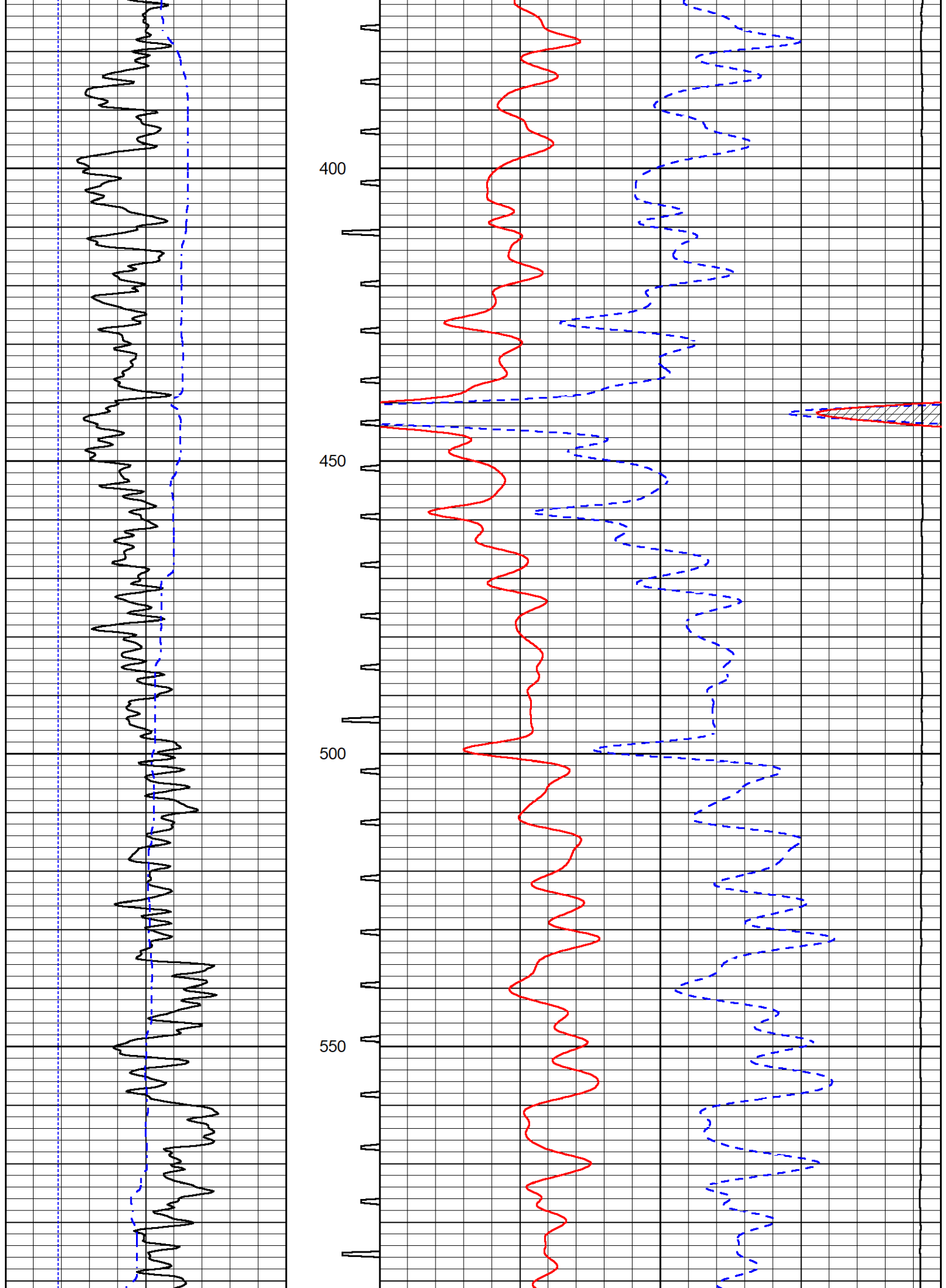
DETAIL SECTION

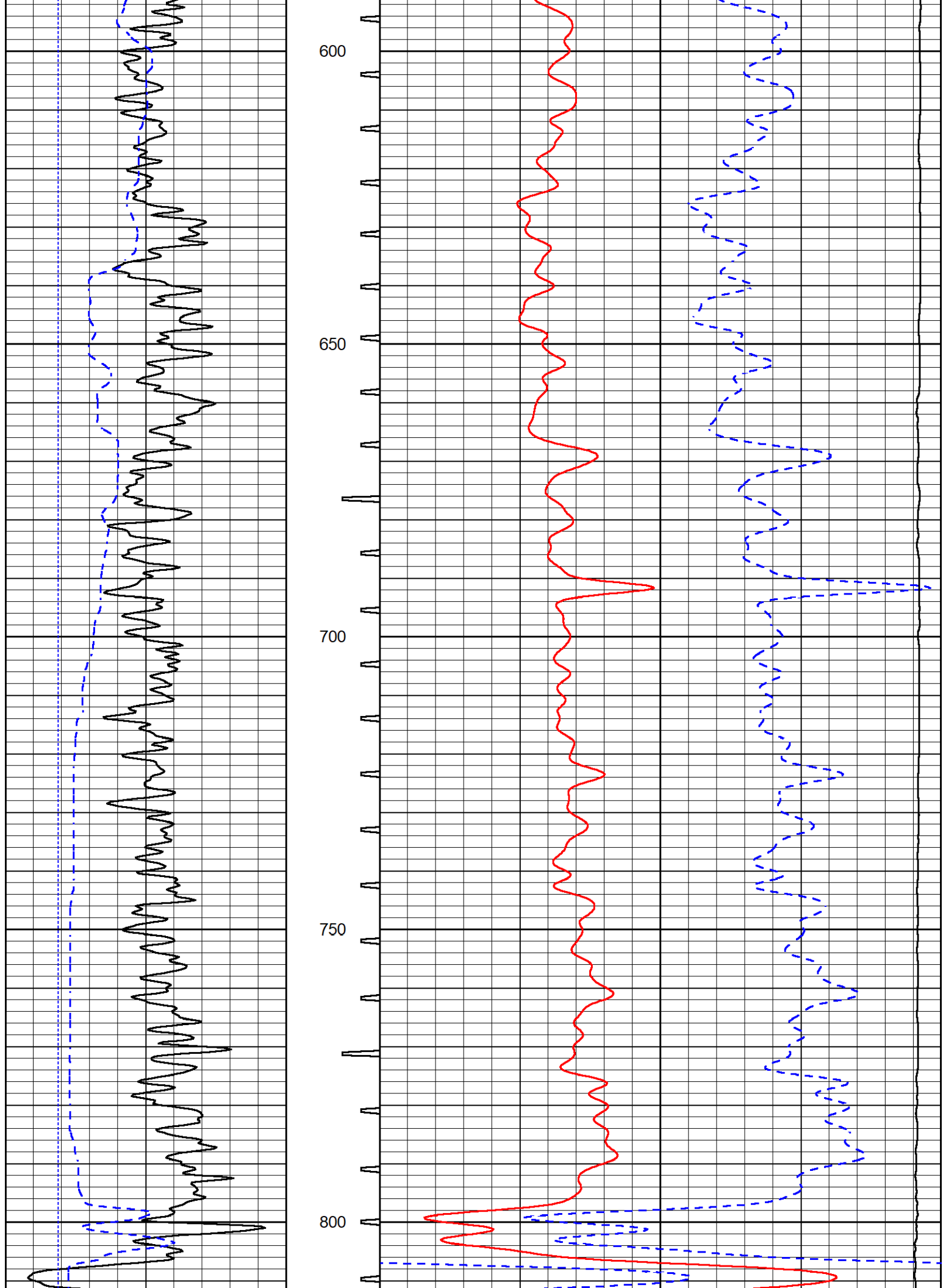
MAIN PASS

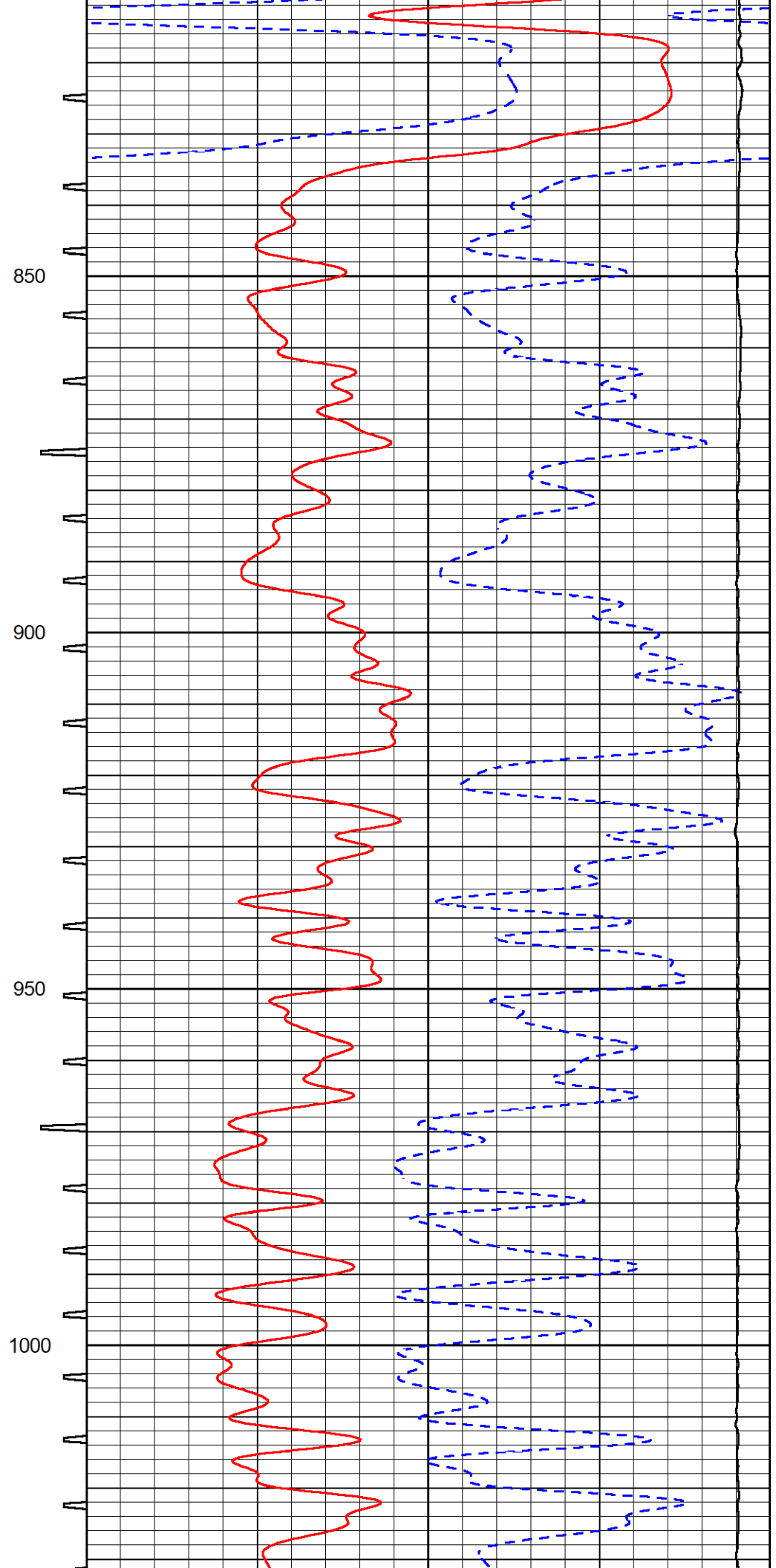
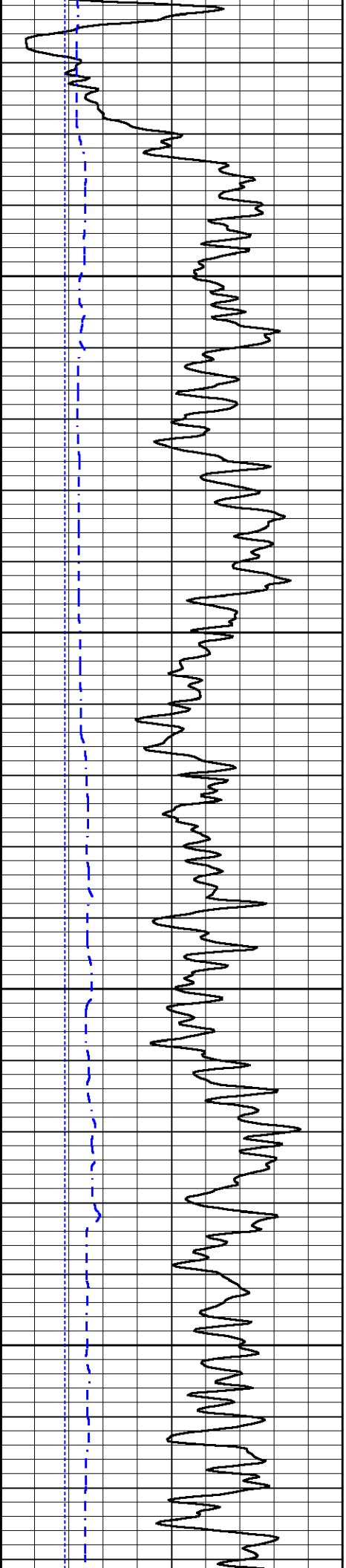
Database File darrah_wyly a 3.db
 Dataset Pathname stack/pass5.1
 Presentation Format _sonic
 Dataset Creation Wed Mar 09 12:54:59 2022
 Charted by Depth in Feet scaled 1:240

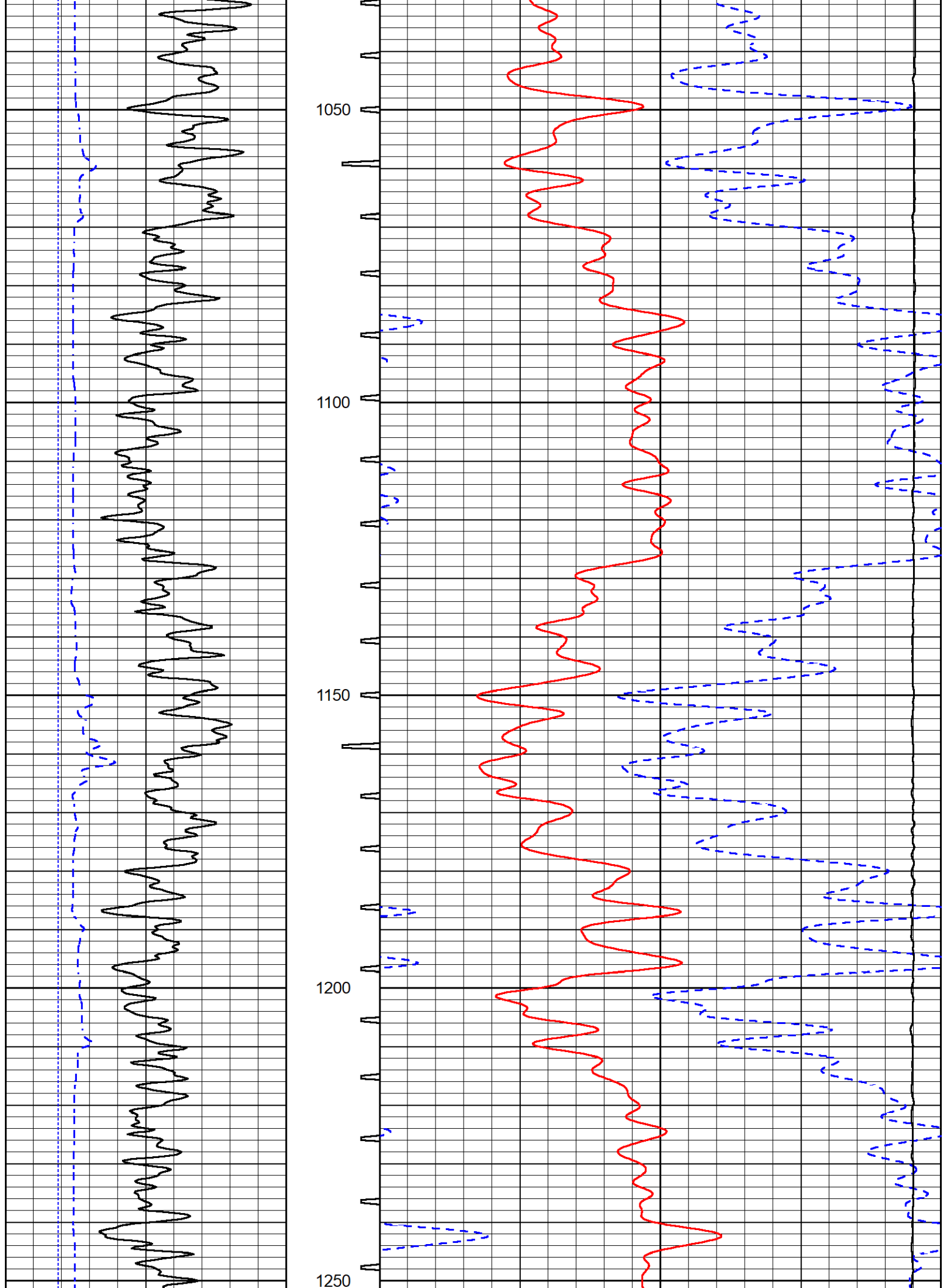
0	Gamma Ray (GAPI)	150	Sonic Int	140	Delta Time (usec/ft) (usec/ft)	40
150	GR (GAPI)	300	5 (msec) 0	30	Sonic Porosity (pu) (pu)	-10
6	Caliper (in)	16		15000	Line Tension (lb)	0

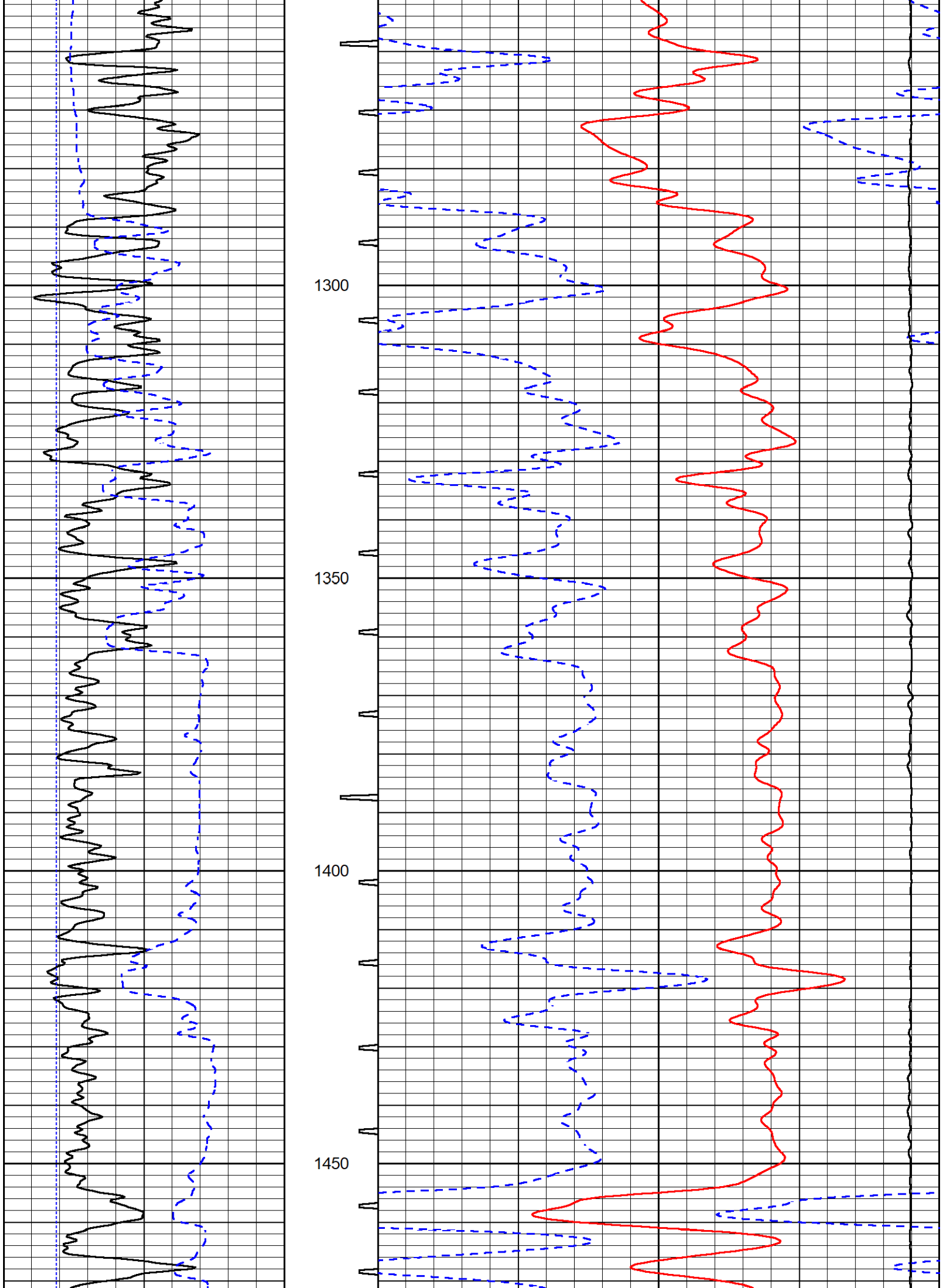


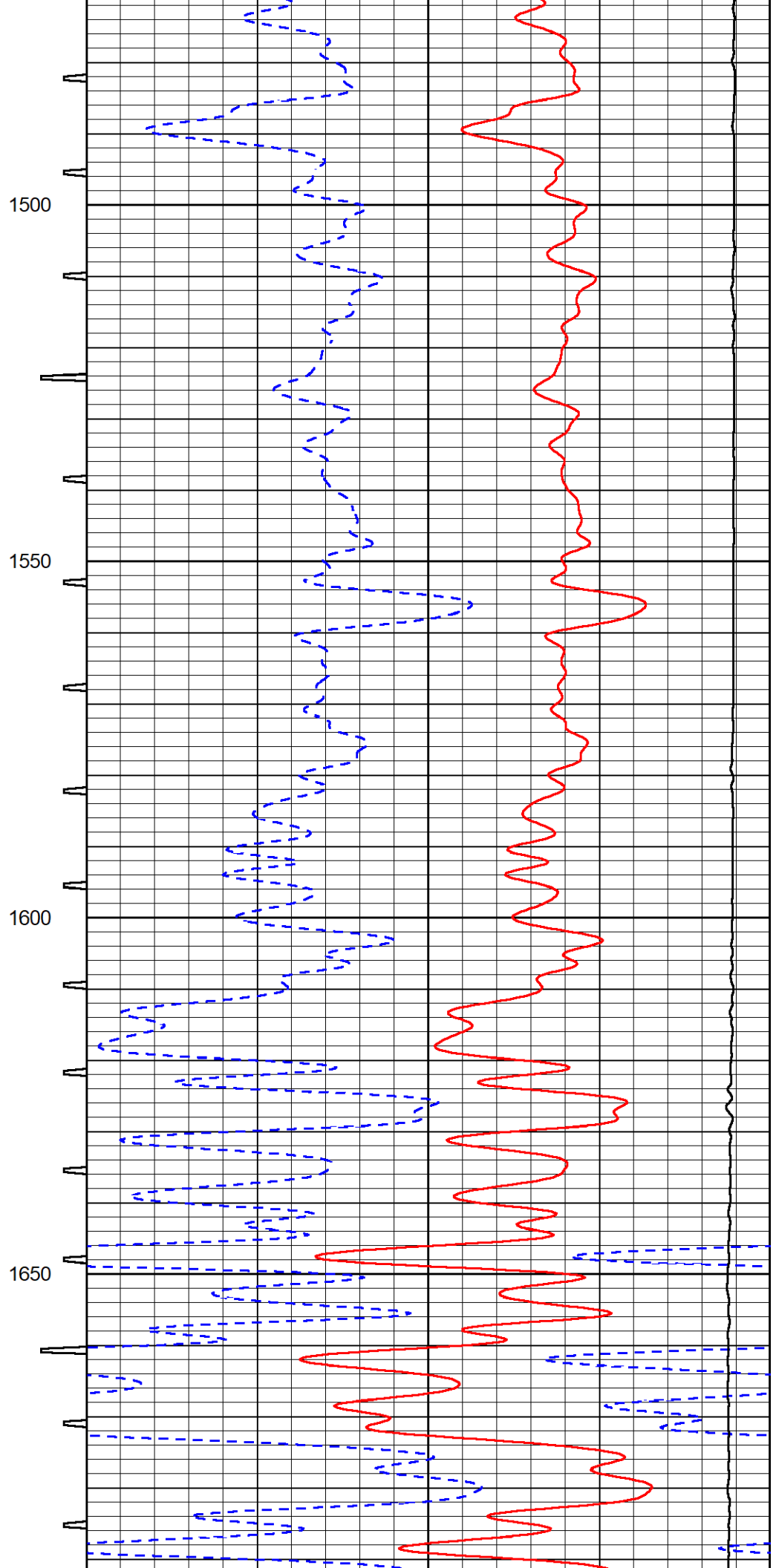
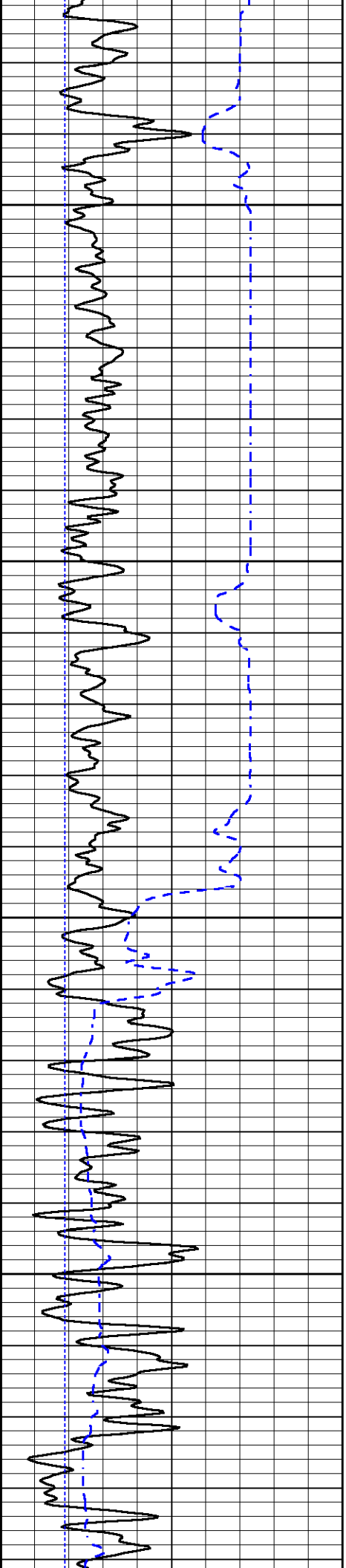


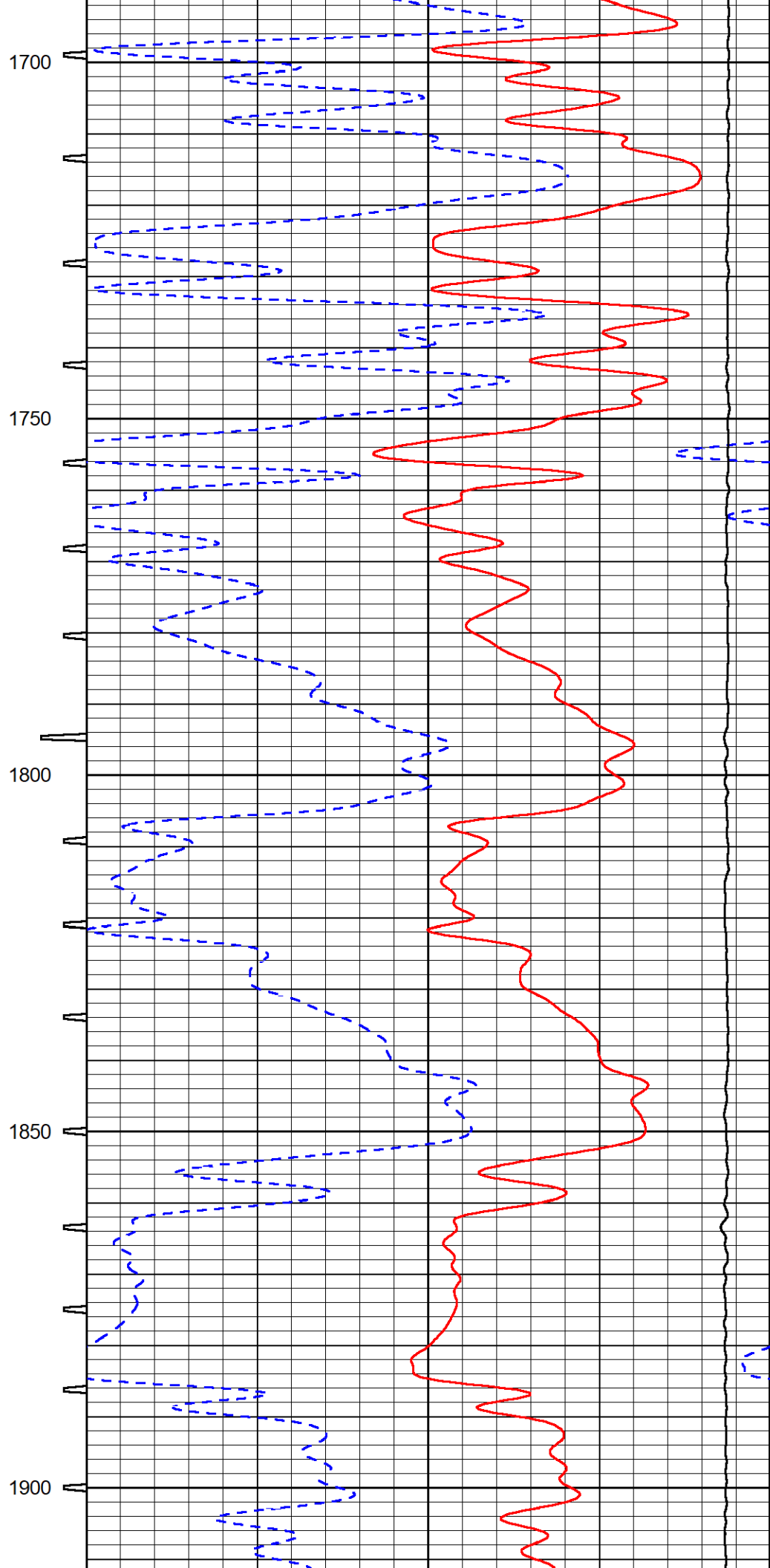
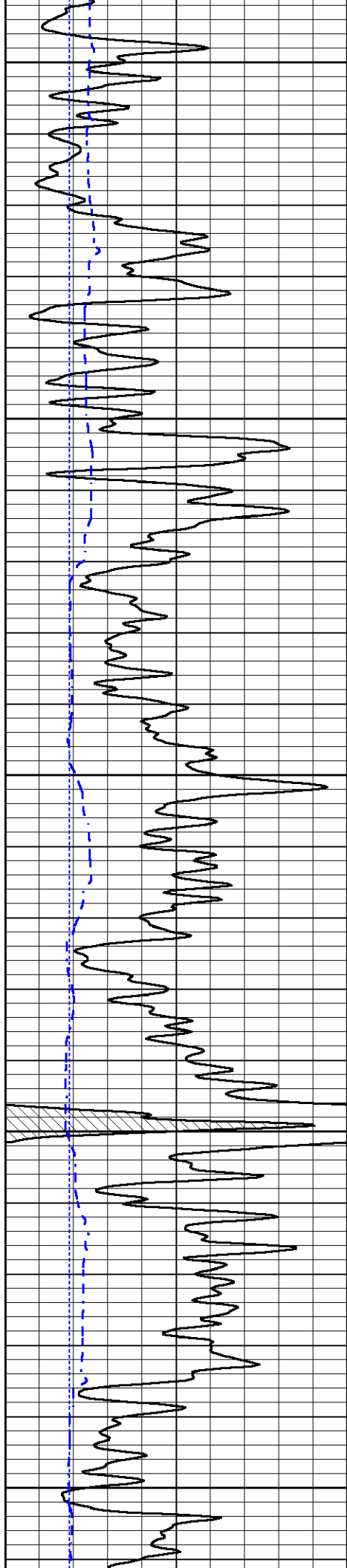


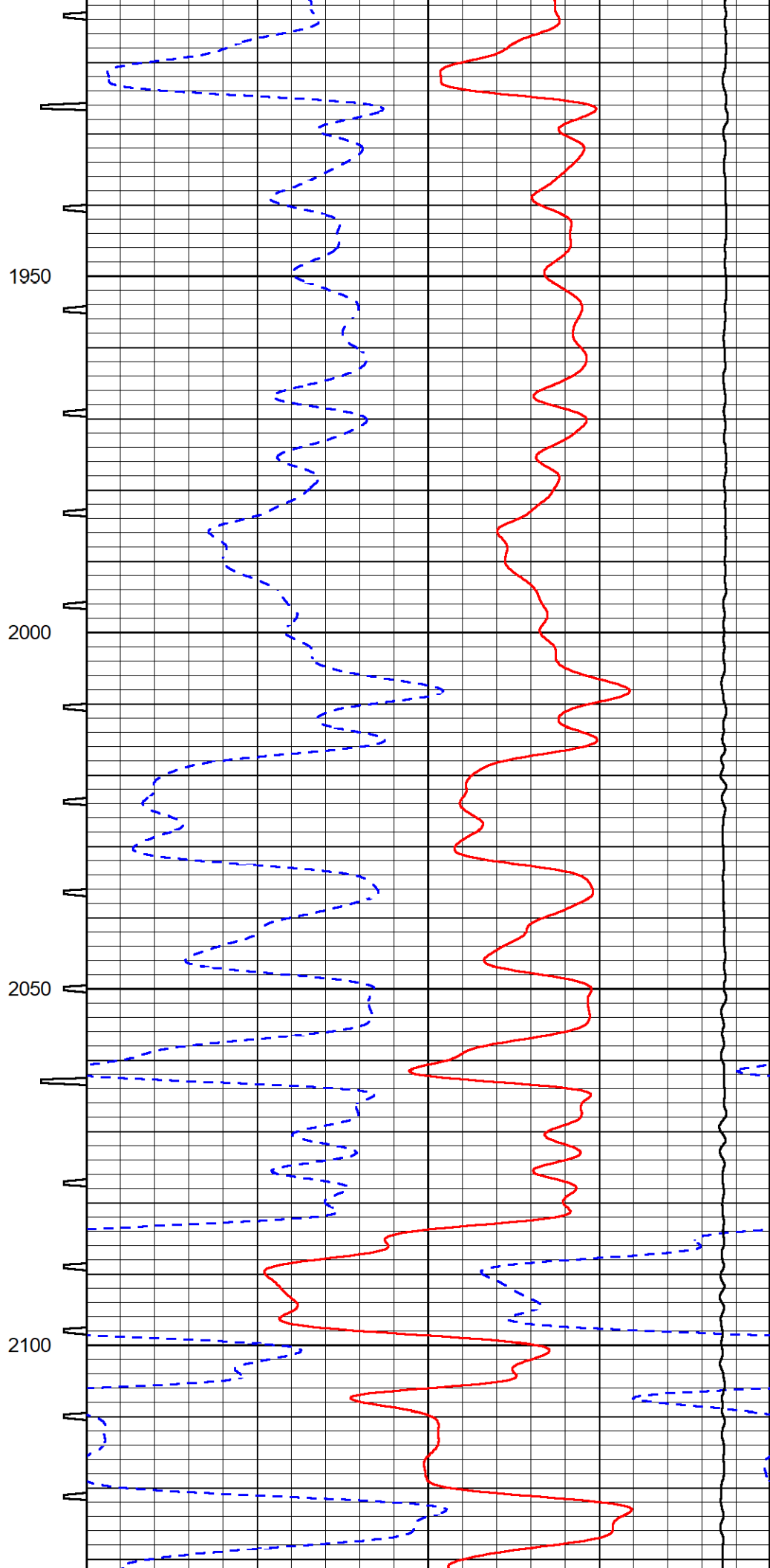
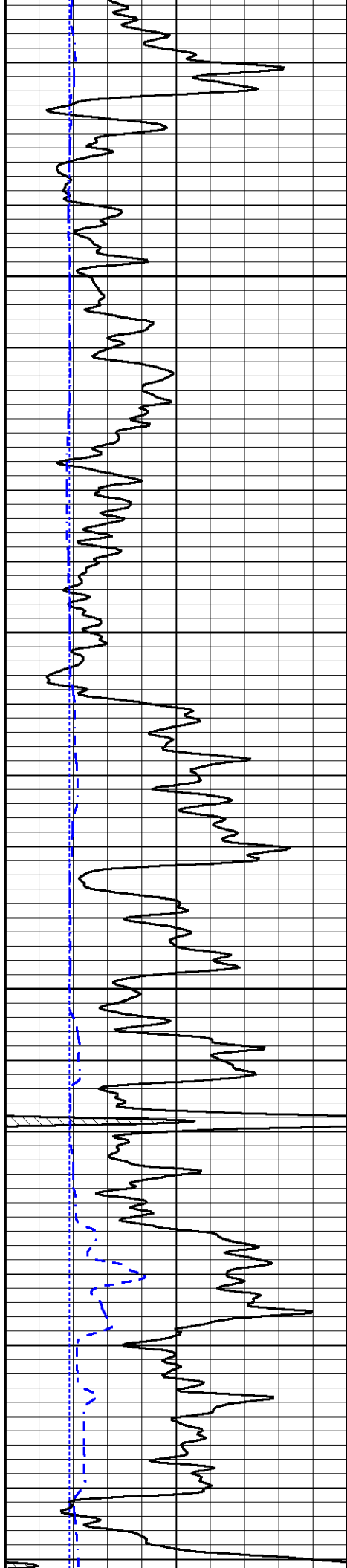


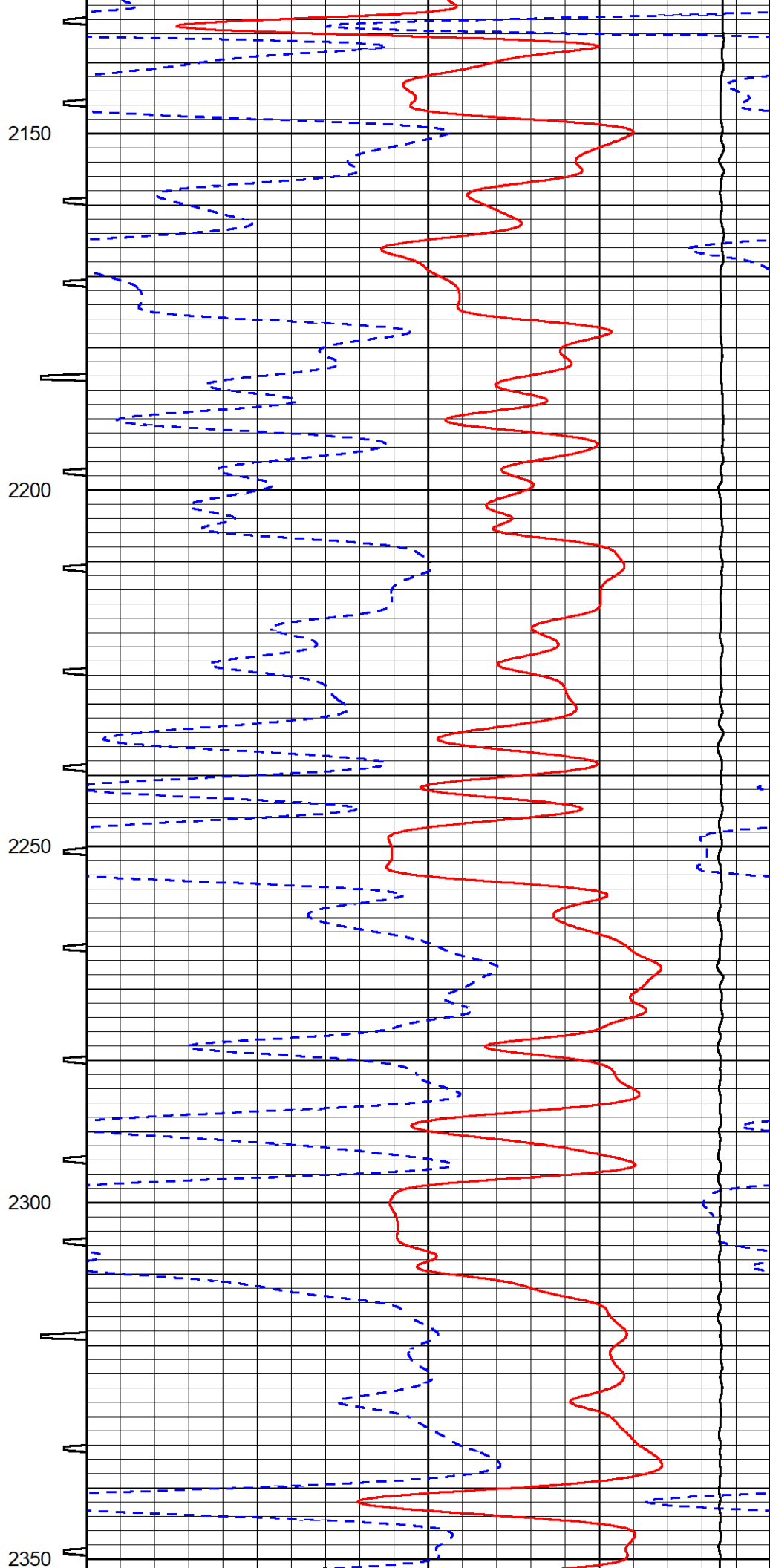
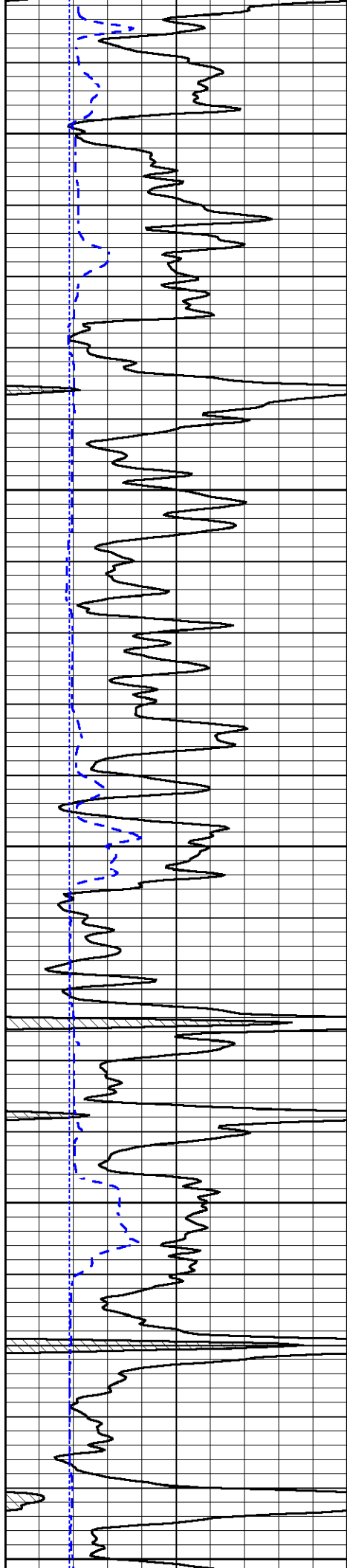


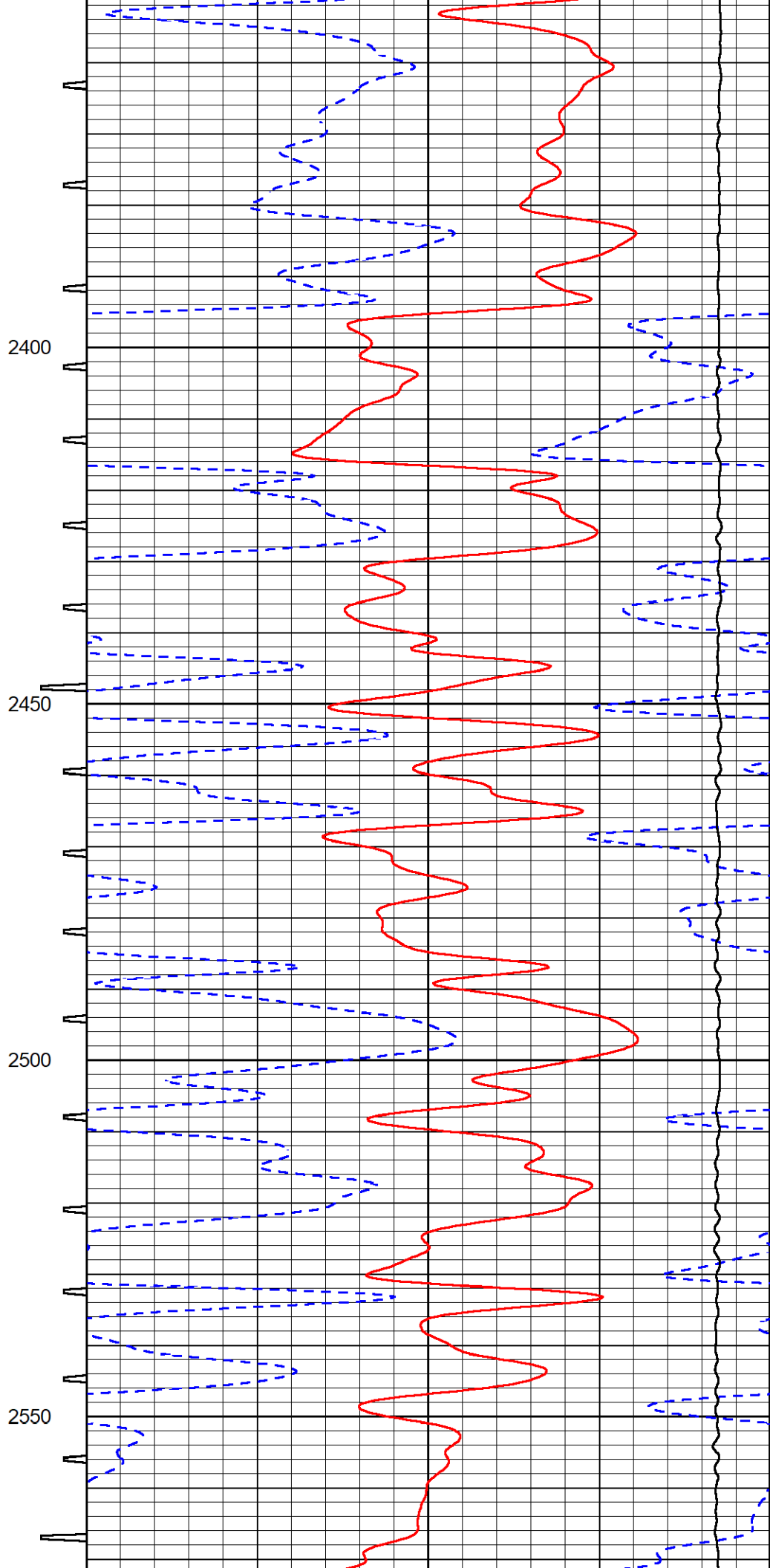
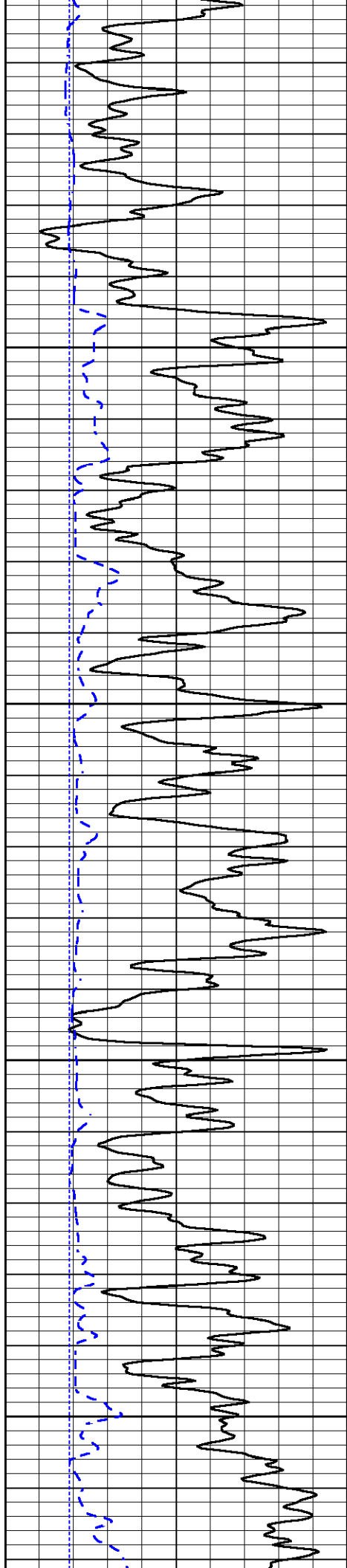


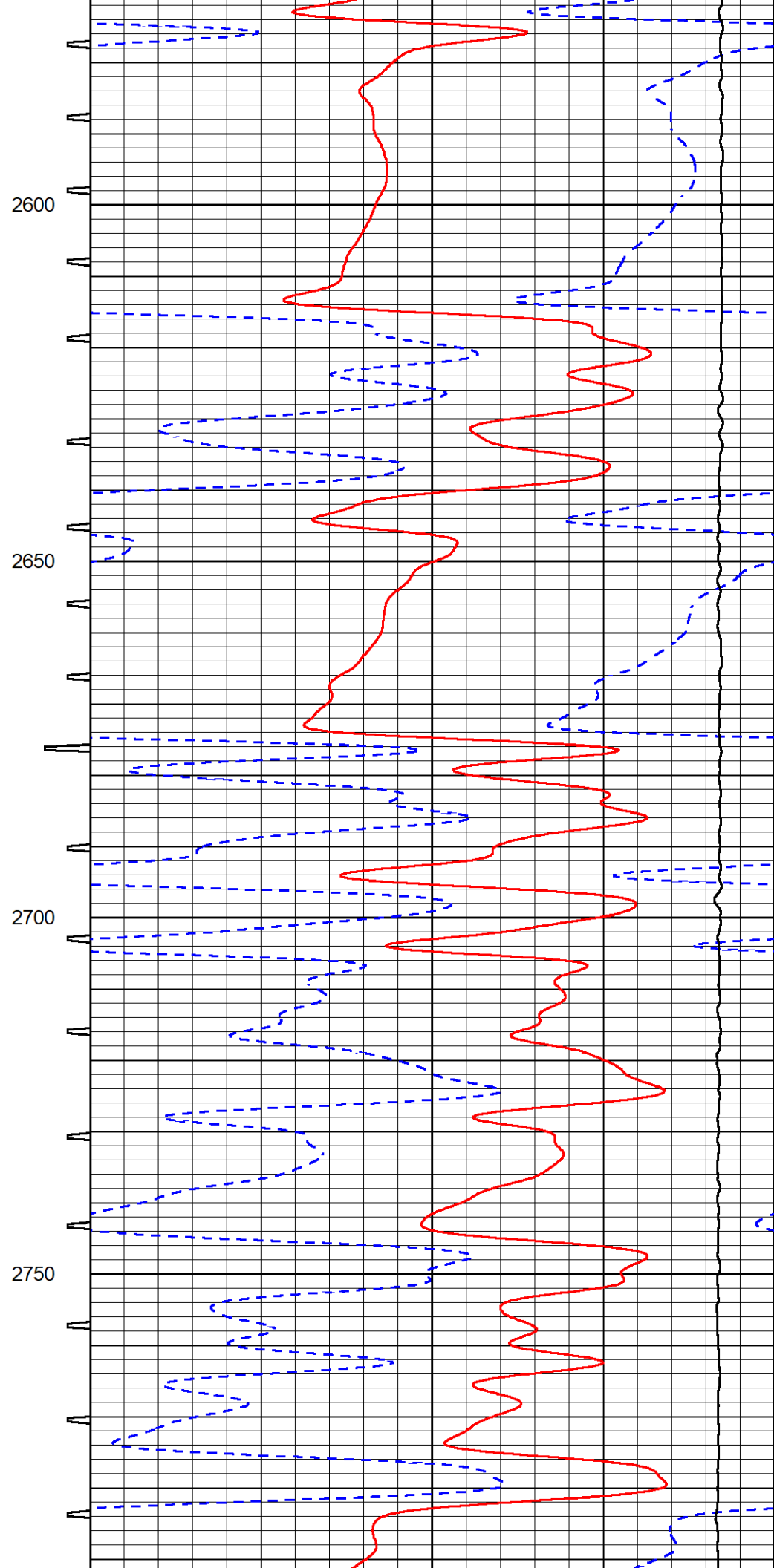
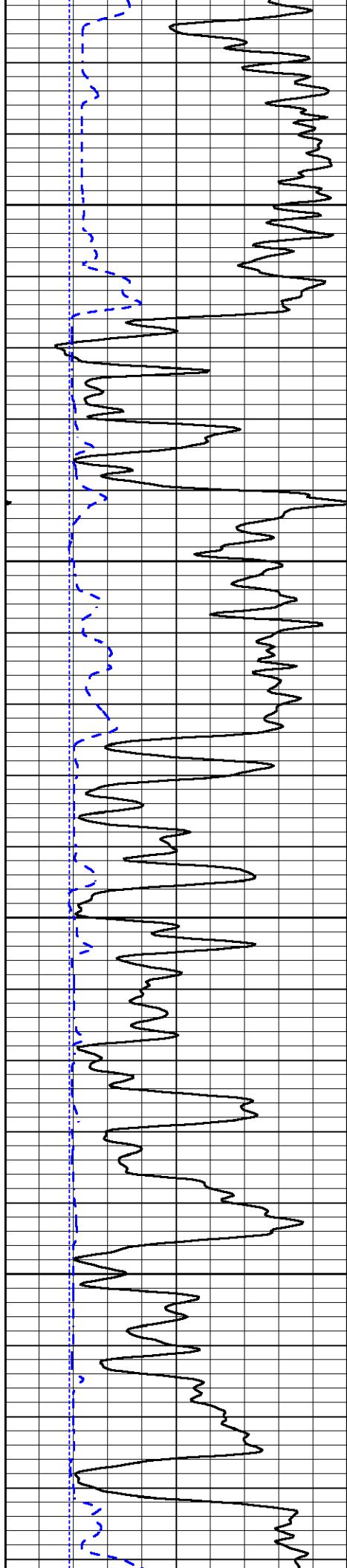


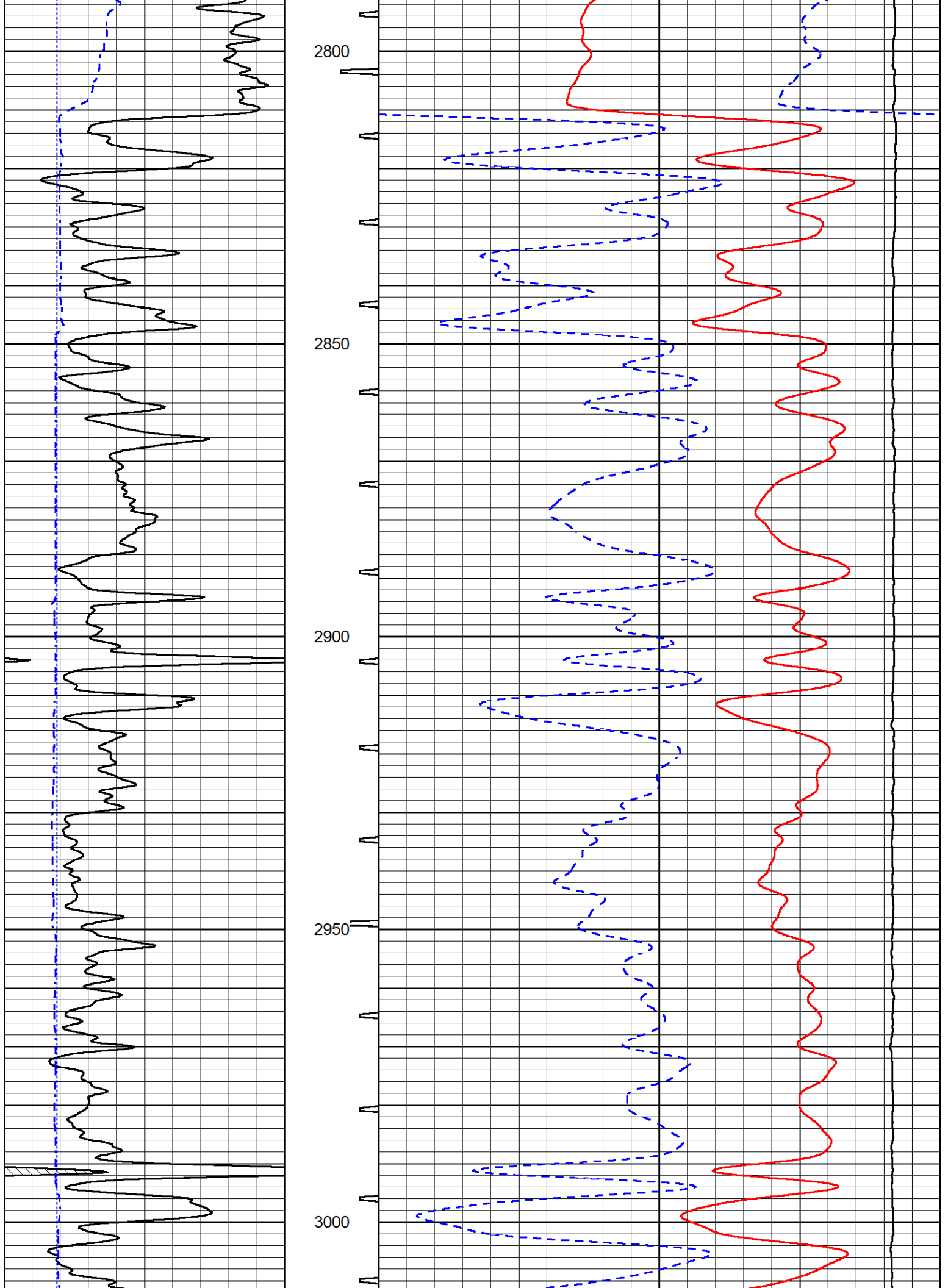


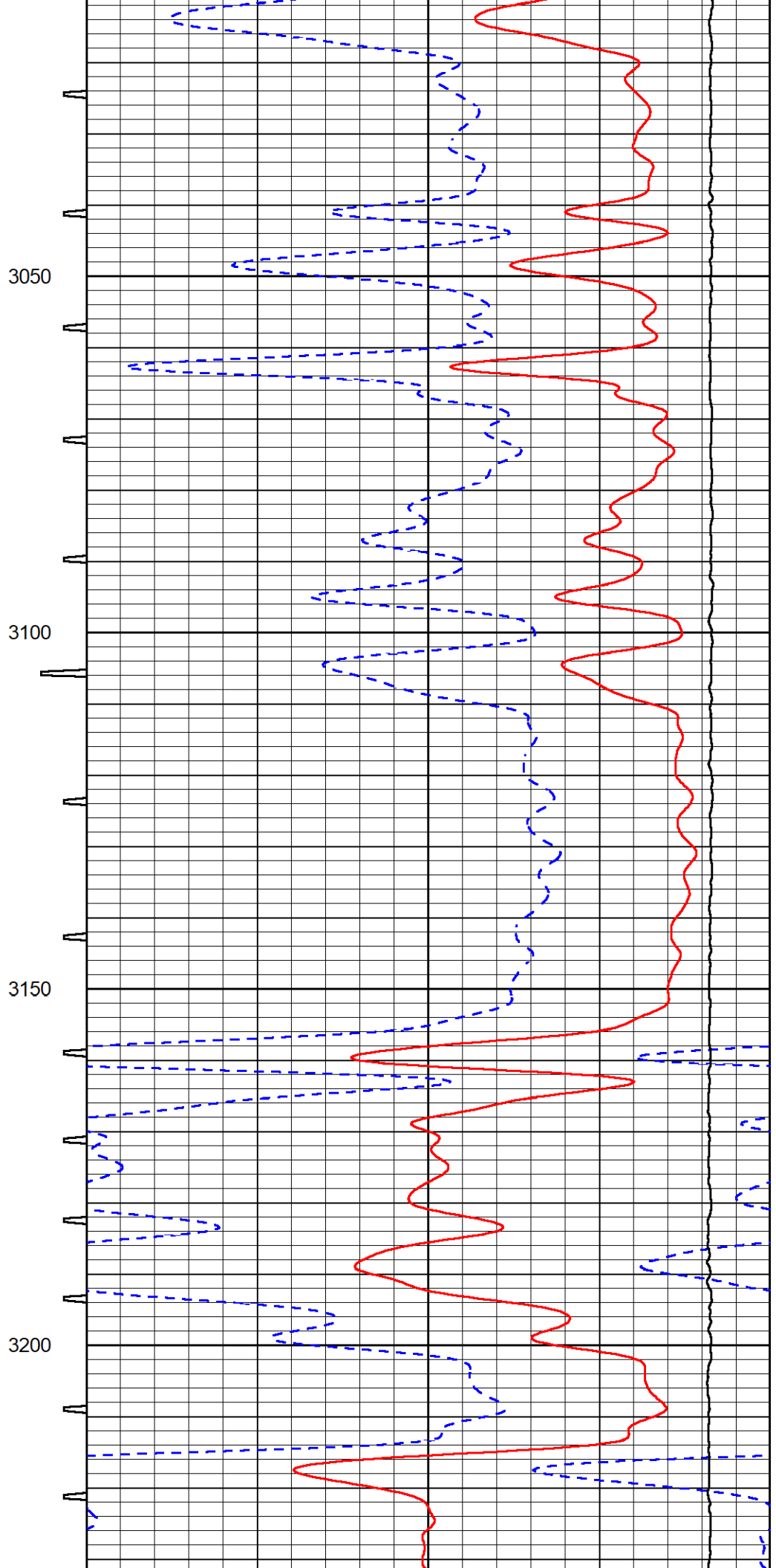
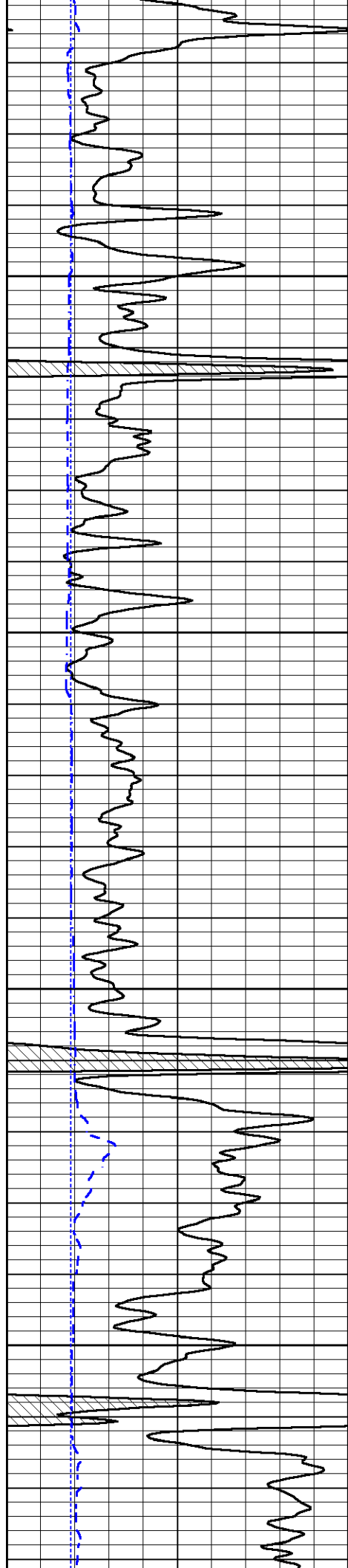


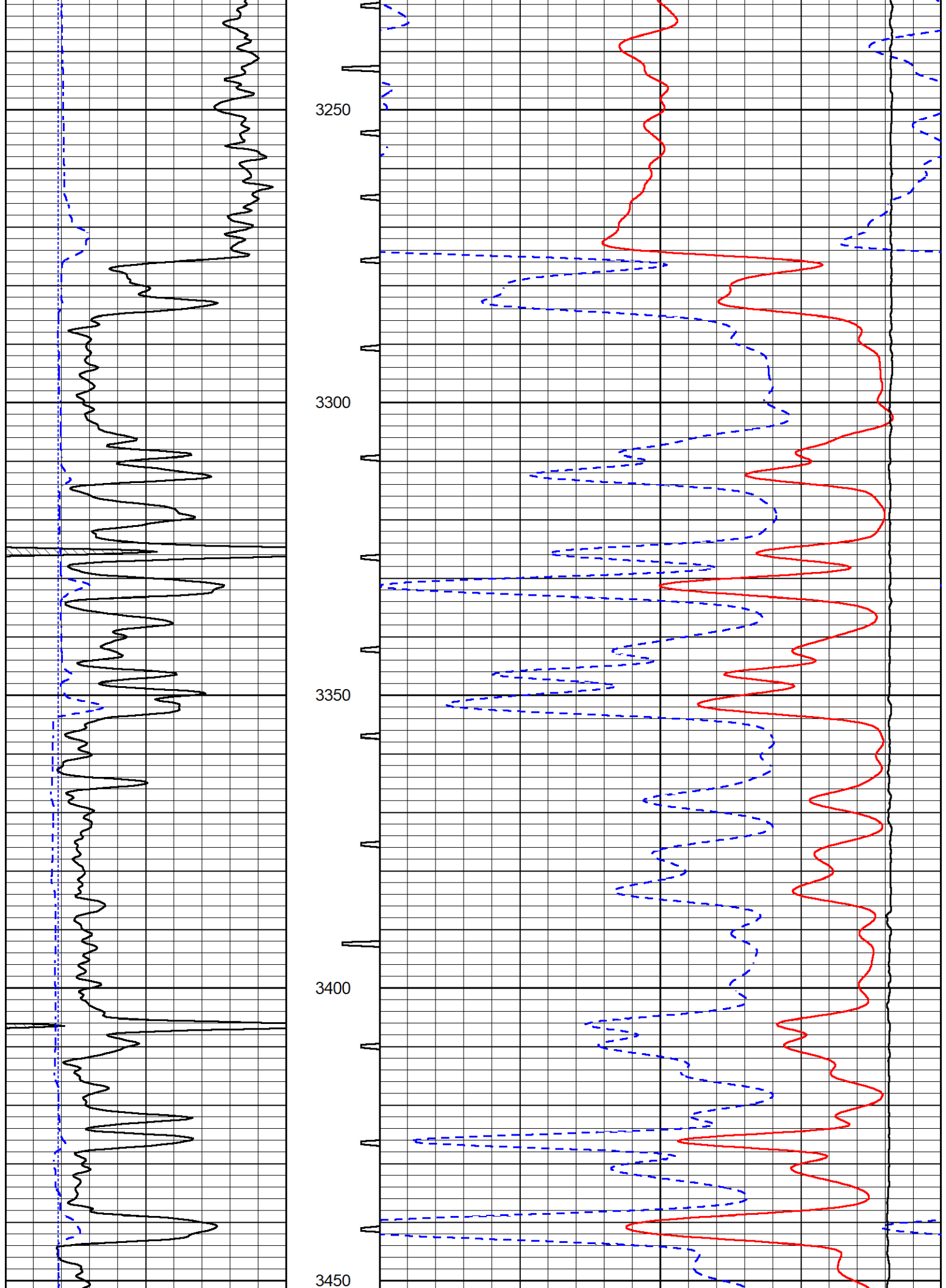


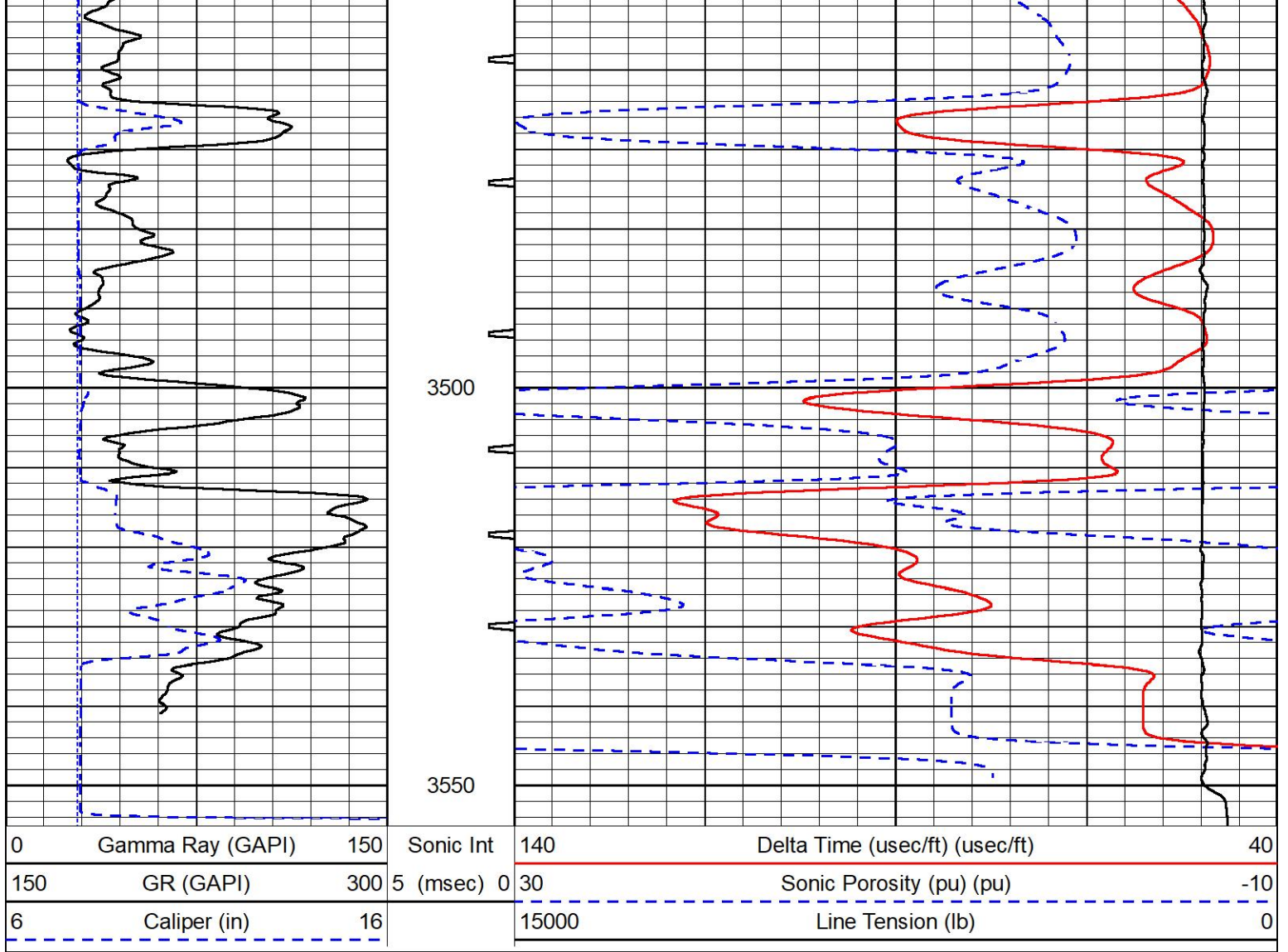










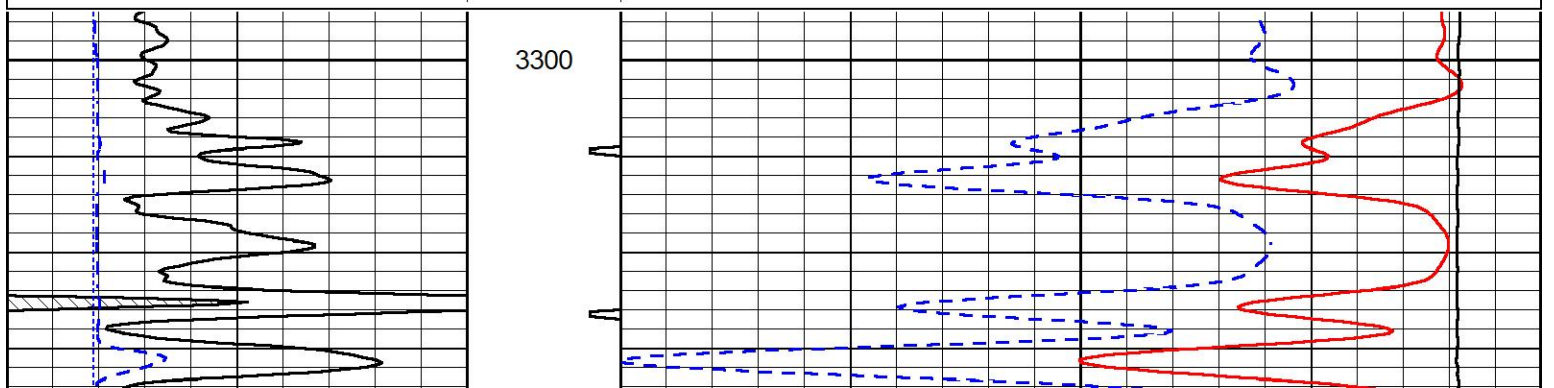


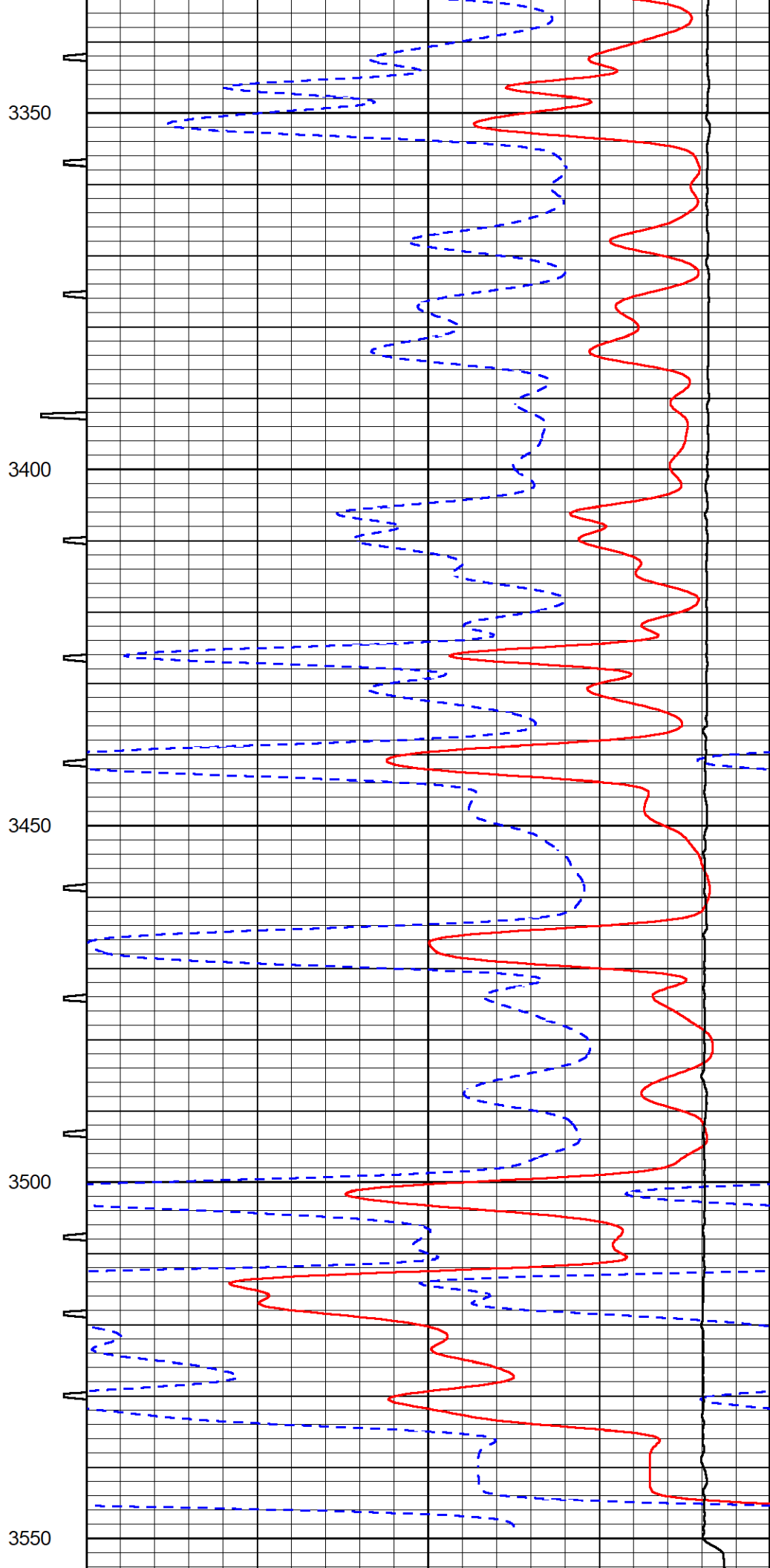
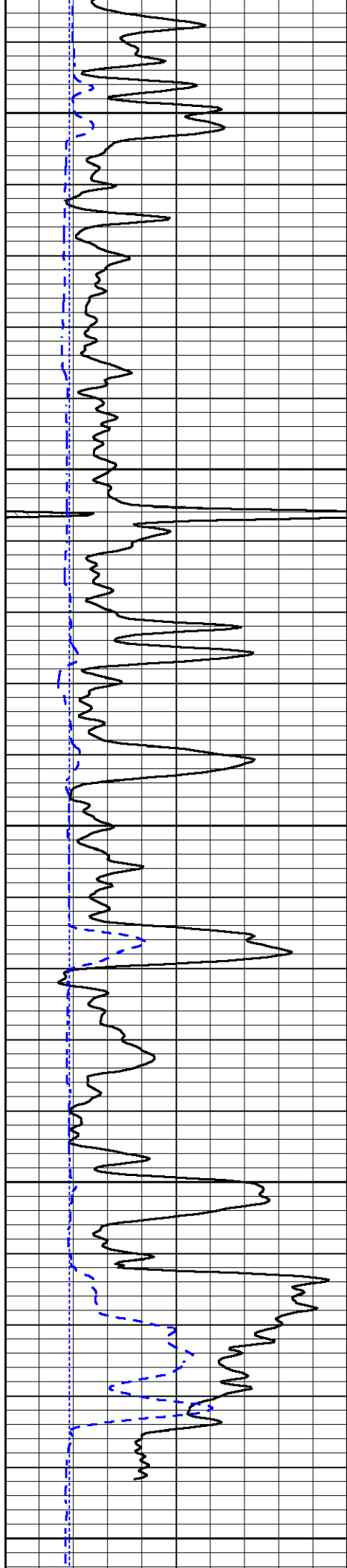
REPEAT SECTION

REPEAT PASS

Database File darrah_wyly a 3.db
 Dataset Pathname stack/pass4.1
 Presentation Format _sonic
 Dataset Creation Wed Mar 09 12:07:18 2022
 Charted by Depth in Feet scaled 1:240

0	Gamma Ray (GAPI)	150	Sonic Int	140	Delta Time (usec/ft) (usec/ft)	40
150	GR (GAPI)	300	5 (msec) 0	30	Sonic Porosity (pu) (pu)	-10
6	Caliper (in)	16		15000	Line Tension (lb)	0





Calibrator Value:	500.0	GAPI
Background Reading:	24.0	cps
Calibrator Reading:	637.0	cps
Sensitivity:	0.5500	GAPI/cps



Company	Darrah Oil Company, LLC
Well	Wyly A #3
Field	Pritchard
County	Barton
State	Kansas