



MIDWEST WIRELINE

MICRORESISTIVITY LOG

Company: Darrah Oil Company, LLC
 Well: Wyly A #3
 Field: Pritchard
 County: Barton
 State: Kansas

Company: Darrah Oil Company, LLC
 Well: Wyly A #3
 Field: Pritchard
 County: Barton
 State: Kansas

Location: 1542 FSL & 1872 FEL
 SEC 26 TWP 20S RGE 14W
 API #: 15-009-26333-00-00
 Elevation: 1898

Other Services: CNL/CDL DIL/BHCS
 Elevation: 1898

Date	3/9/2022
Run Number	Two
Depth Driller	3551
Depth Logger	3550
Bottom Logged Interval	3549
Top Log Interval	2700
Casing Driller	8:625 @ 333
Casing Logger	330
Bit Size	7.875
Type Fluid in Hole	Chemical
Salinity, ppm CL	6000
Density / Viscosity	9.1 58
pH / Fluid Loss	10.0 8.4
Source of Sample	FLOWLINE
Rm @ Meas. Temp	0.50 @ 50
Rmt @ Meas. Temp	0.38 @ 50
Rmc @ Meas. Temp	0.68 @ 50
Source of Rmf / Rmc	CHARTS
Rm @ BHT	0.23 @ 110
Operating Rig Time	4 Hours
Max Rec. Temp. F	110
Equipment Number	P-24
Location	Hays
Recorded By	D. Schmidt
Witnessed By	Roger Martin

<<< Fold Here >>>

All interpretations are opinions based on inferences from electrical or other measurements and Midwest Wireline LLC cannot and does not guarantee the accuracy or correctness of any interpretation, and Midwest Wireline LLC will not be liable or responsible for any loss, costs, damages, or expenses incurred or sustained by anyone resulting from any interpretation made by any of our officers, agents or employees.

Comments

N/A DENOTES NOT AVAILABLE OR NON-APPLICABLE.

Great Bend,
 South to 50th, West to 40th, 3/4 South,
 West into

Log Measured From: Kelly Bushing 5 Ft. Above Permanent Datum

THANK YOU FOR USING MIDWEST WIRELINE LLC
 785-625-3858

Your Midwest Wireline Crew		This Log Record Was Witnessed By	
Engineer: D. Schmidt	Operator:	Primary Witness: Roger Martin	Secondary Witness:
Operator:	Operator:	Secondary Witness:	Secondary Witness:
Operator:		Secondary Witness:	

Operator	Offset (ft)	Substrate	Description	Length (ft)	C.D. (in)	Weight (lb)
----------	-------------	-----------	-------------	-------------	-----------	-------------

Sensor	Offset (ft)	Schematic	Description	Length (ft)	O.D. (in)	Weight (lb)
MCAL MI MN	25.42 25.42 25.42		ML-GO (0002G)	5.00	3.50	100.00
			CENT-PENGO (4-PENGO)	4.25	3.00	70.00
WVF4 WVF1	12.50 12.50		SLT-PENGO (603)	15.92	3.50	300.00
WVF3 WVF2	10.50 10.50					
			CENT-PENGO (3-PENGO)	4.25	3.00	70.00

Dataset: darrah_wyly a 3.db: field/well/sonmel/pass3
 Total length: 29.42 ft
 Total weight: 540.00 lb
 O.D.: 3.50 in

Log Variables

DatabaseC:\ProgramData\Warrior\Data\darrah_wyly a 3.db
 Dataset field/well/stack/pass5.1/_vars_

Top - Bottom

A	BOREID in	BOTTEMP degF	CASEOD in	CASETHCK in	FLUIDDEN g/cc	M	MATRXDEN g/cc
1	7.875	110	5.5	0	1	2	2.71
NPORSEL	PERFS	SNDERR mmho/m	SNDERRM mmho/m	SPSHIFT mV	SRFTEMP degF	SZCOR	TDEPTH ft
Limestone	0	0	0	-110	30	Off	3351

Variable Description

A : Cement Factor (a)
 BOREID : Borehole I.D.
 BOTTEMP : Bottom Hole Temperature
 CASEOD : Casing O.D.
 CASETHCK : Casing Thickness
 FLUIDDEN : Fluid Density
 M : Cement Exp (m)
 MATRXDEN : Matrix Density

NPORSEL : Neutron Porosity Curve Select
 PERFS : Perforation Flag
 SNDERR : Deep Sonde Error Correction
 SNDERRM : Medium Sonde Error Correction
 SPSHIFT : S.P. Baseline Offset
 SRFTEMP : Surface Temperature
 SZCOR : CN Size Cor. ?
 TDEPTH : Total Depth



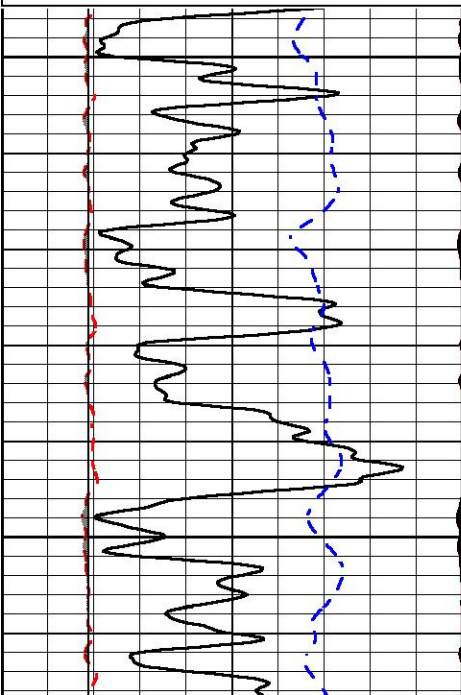
DETAIL SECTION

MAIN PASS

Database File darrah_wyly a 3.db
 Dataset Pathname stack/pass5.1
 Presentation Format _micro
 Dataset Creation Wed Mar 09 12:54:59 2022
 Charted by Depth in Feet scaled 1:240

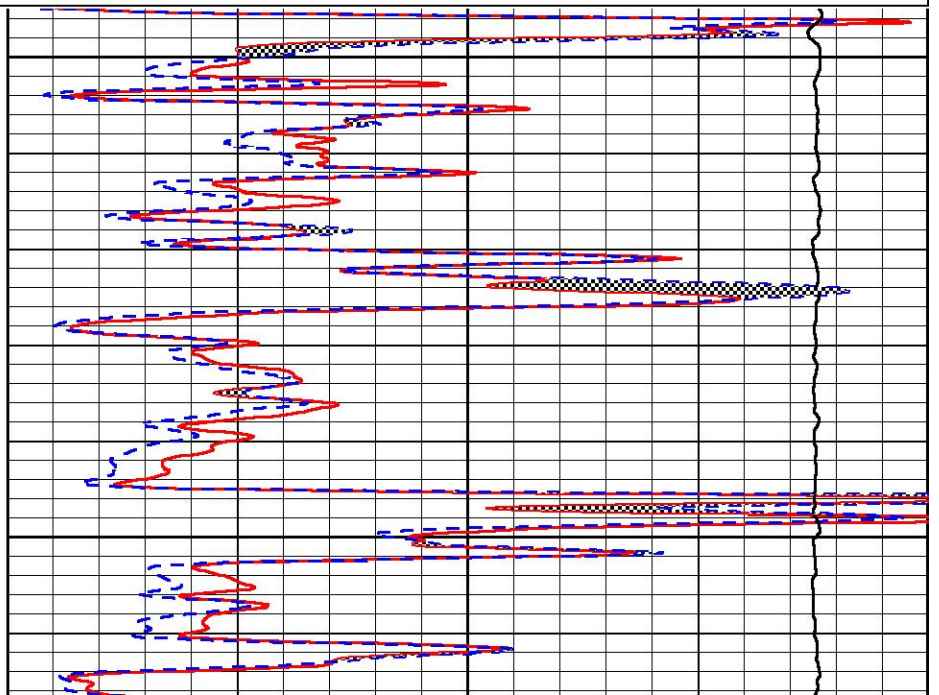
0	Gamma Ray (GAPI)	150
6	Caliper (in)	16
-2.875	mcal (in)	7.875
-200	SP (mV)	0

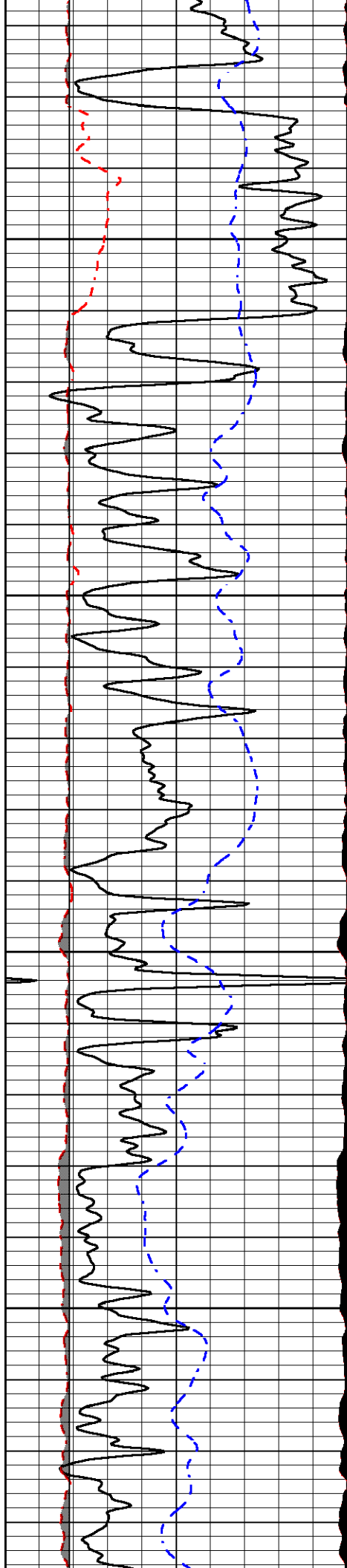
0	Micro Inverse 1 X 1 (Ohm-m)	40
0	Micro Normal 2" (Ohm-m)	40
10000	Line Weight (lb)	0



2700

2750



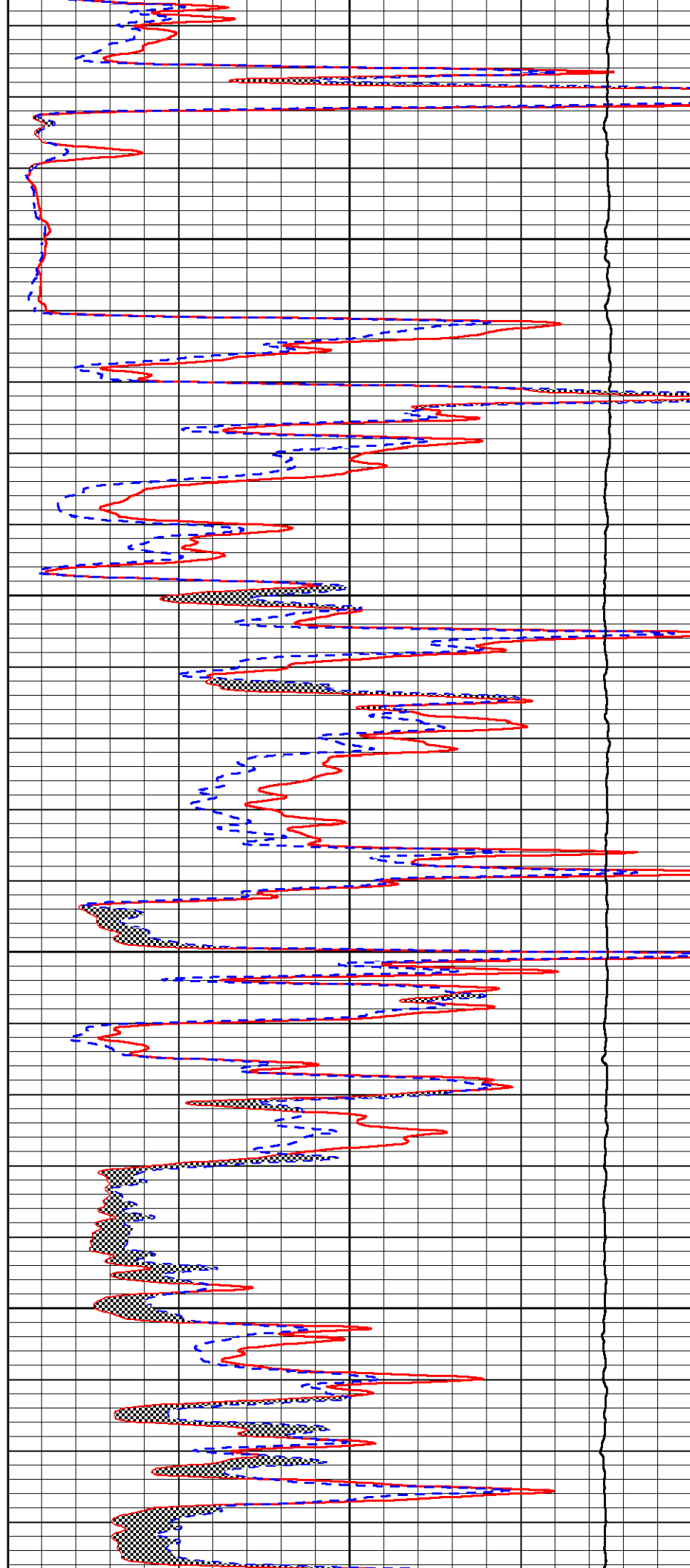


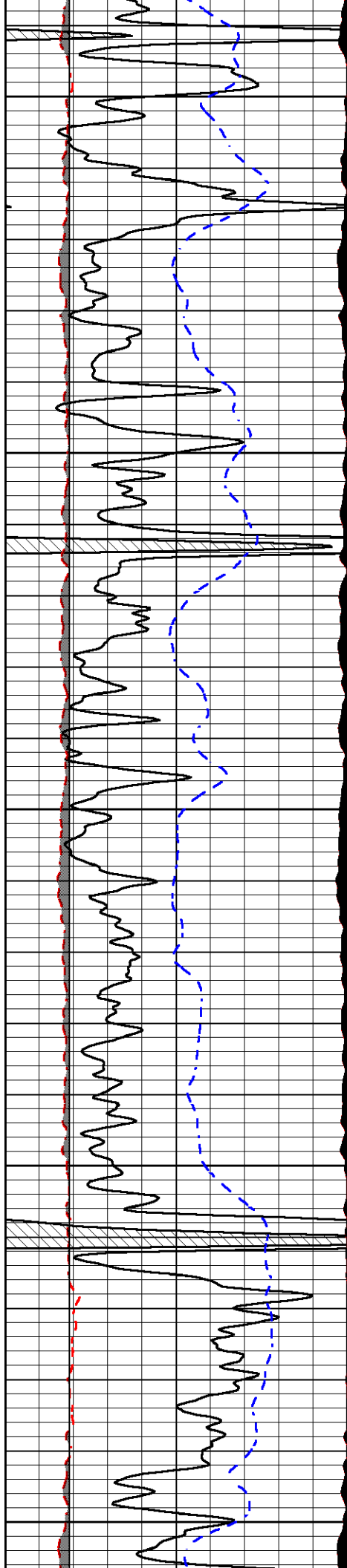
2800

2850

2900

2950





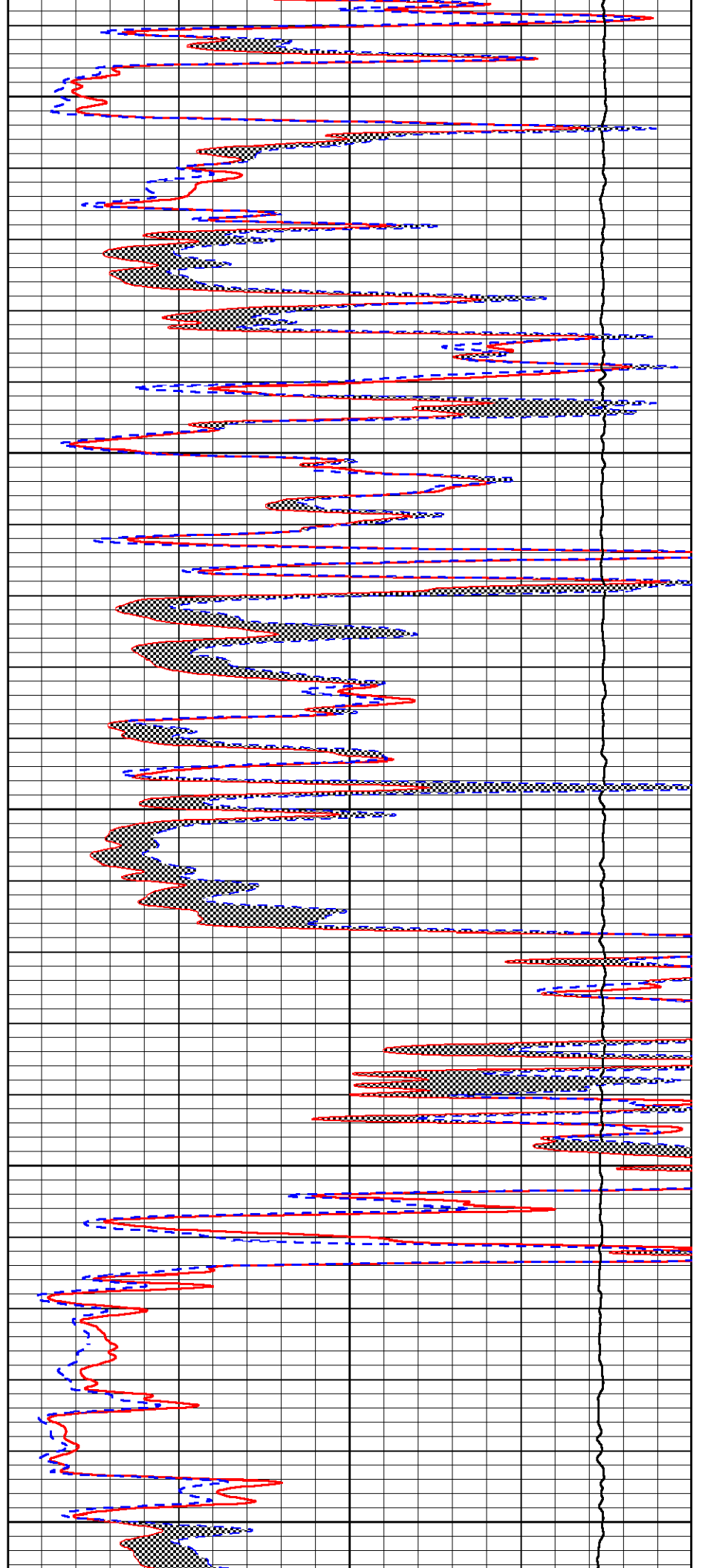
3000

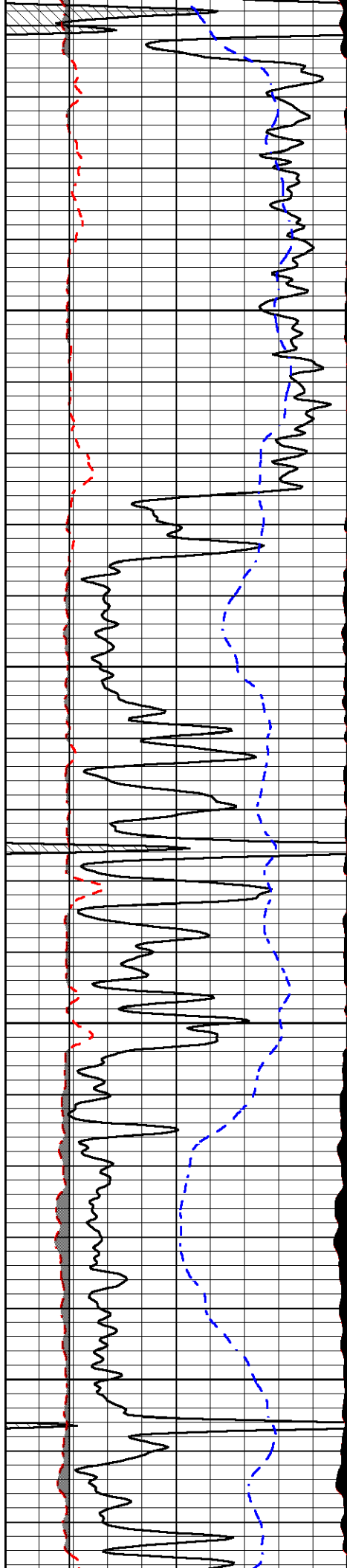
3050

3100

3150

3200



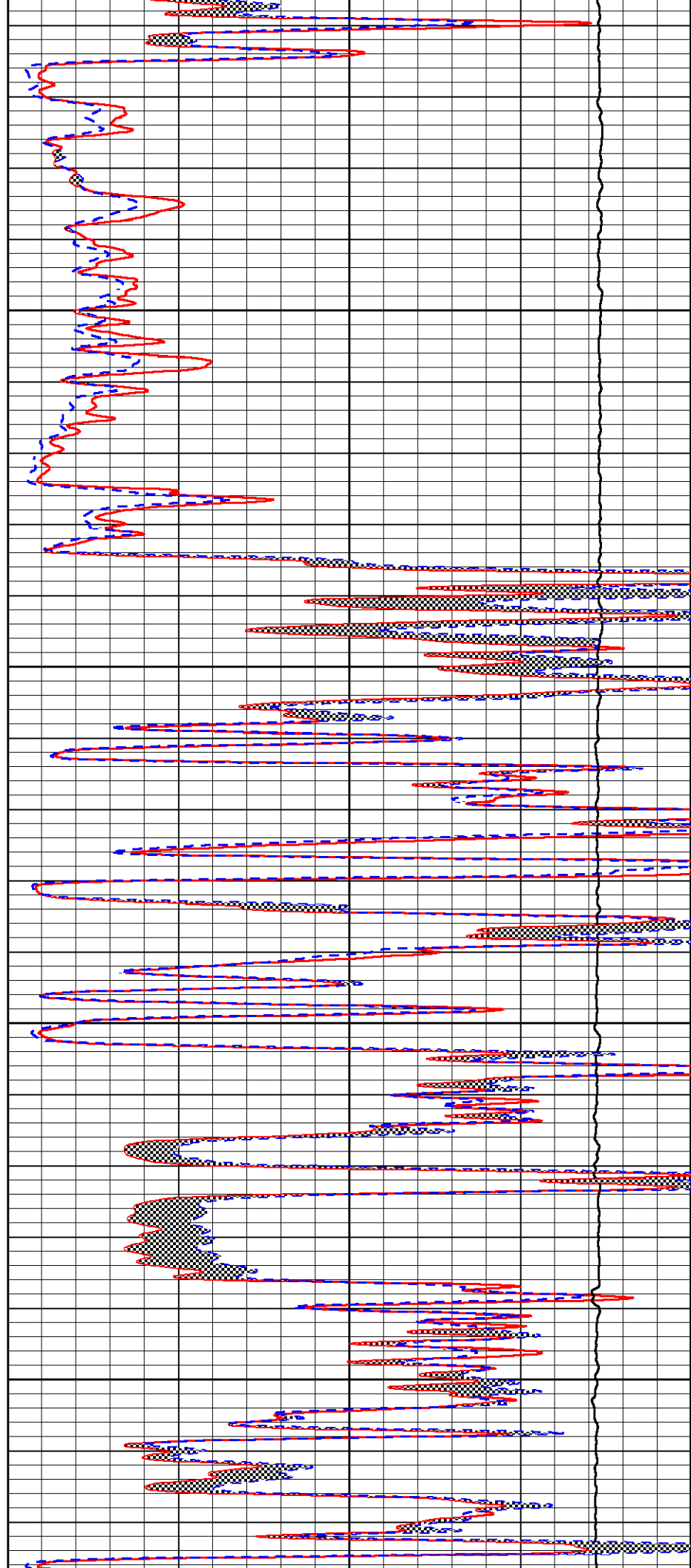


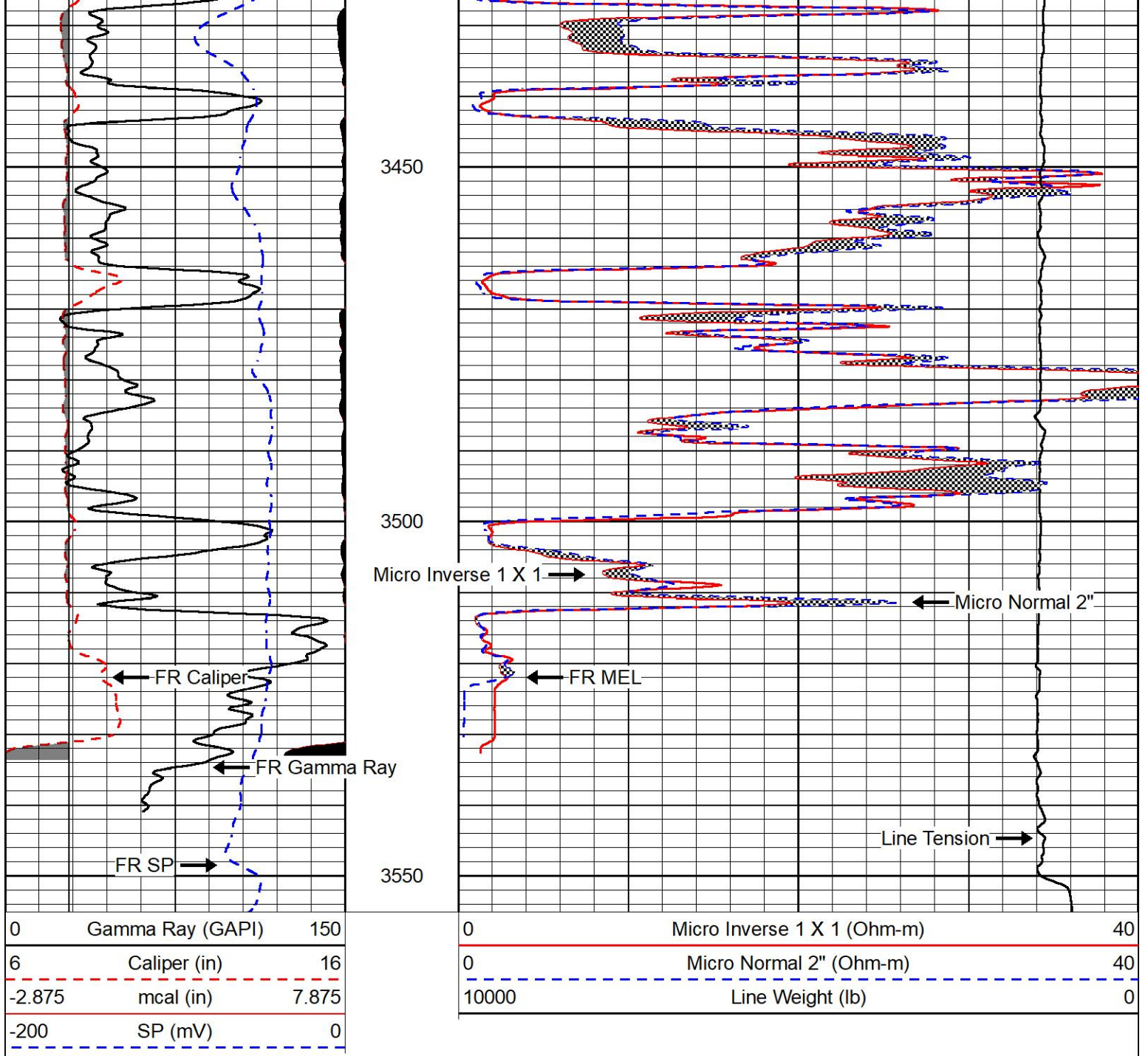
3250

3300

3350

3400

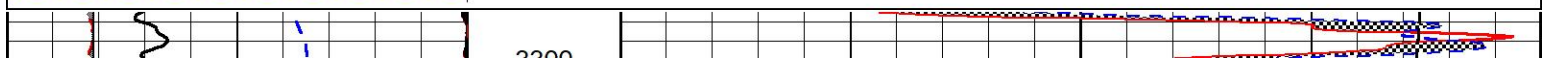
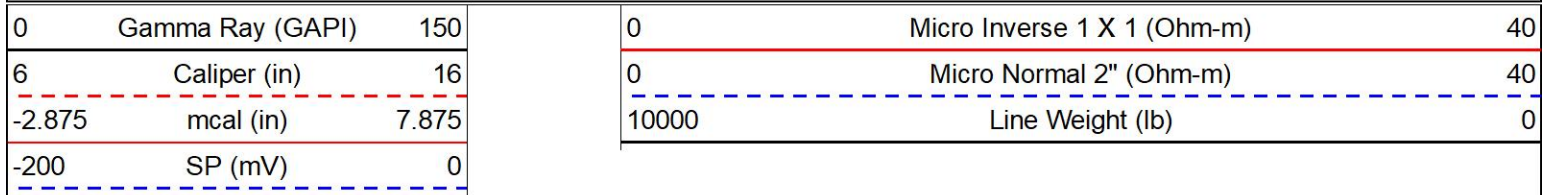


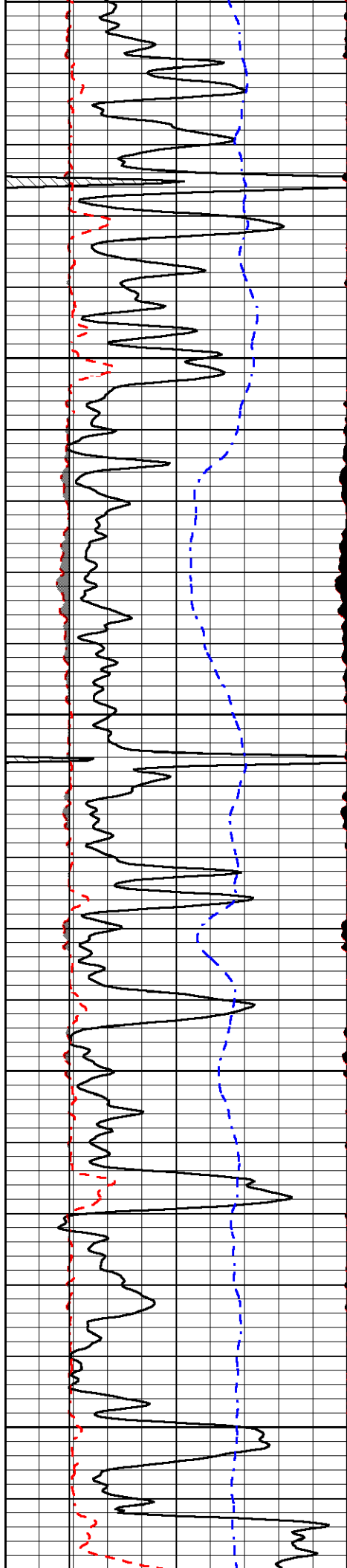


REPEAT SECTION

REPEAT PASS

Database File darrah_wyly a 3.db
 Dataset Pathname stack/pass4.1
 Presentation Format _micro
 Dataset Creation Wed Mar 09 12:07:18 2022
 Charted by Depth in Feet scaled 1:240





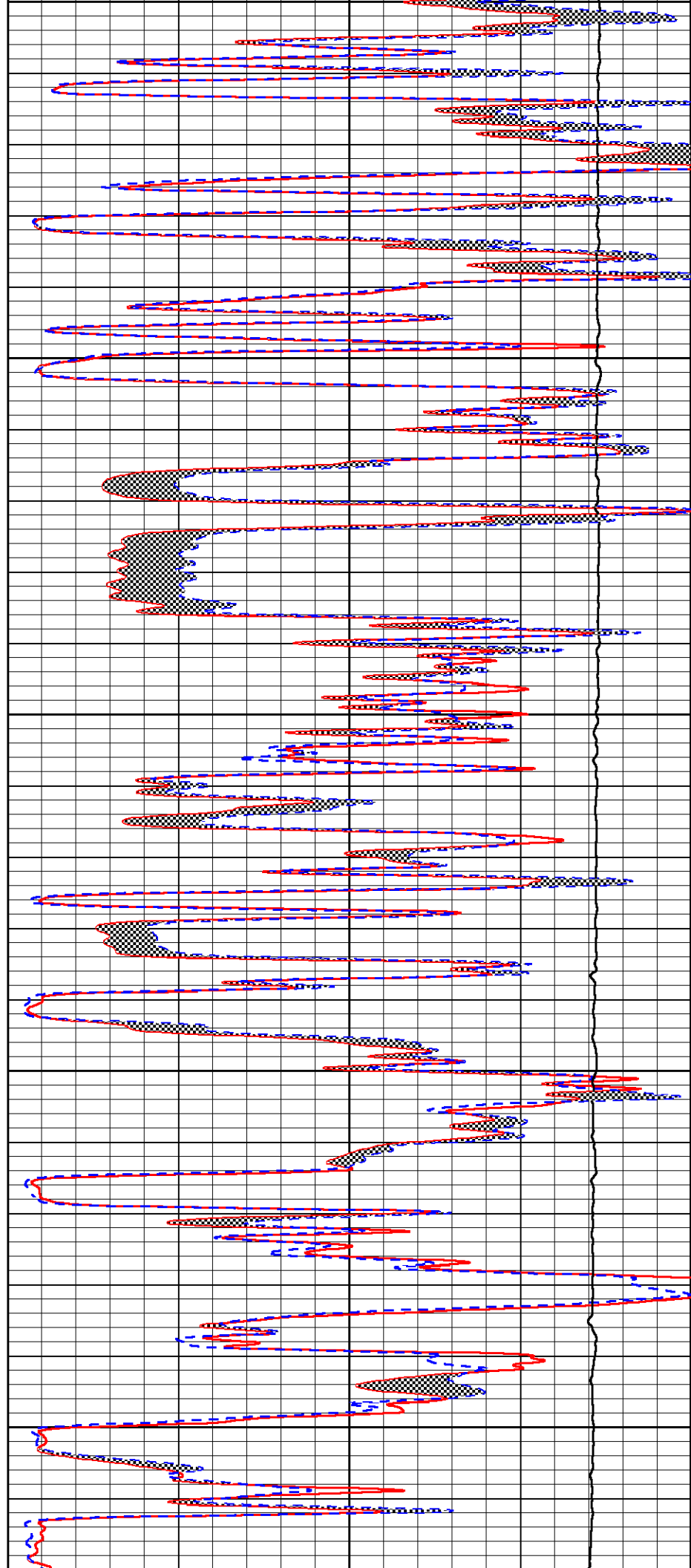
3500

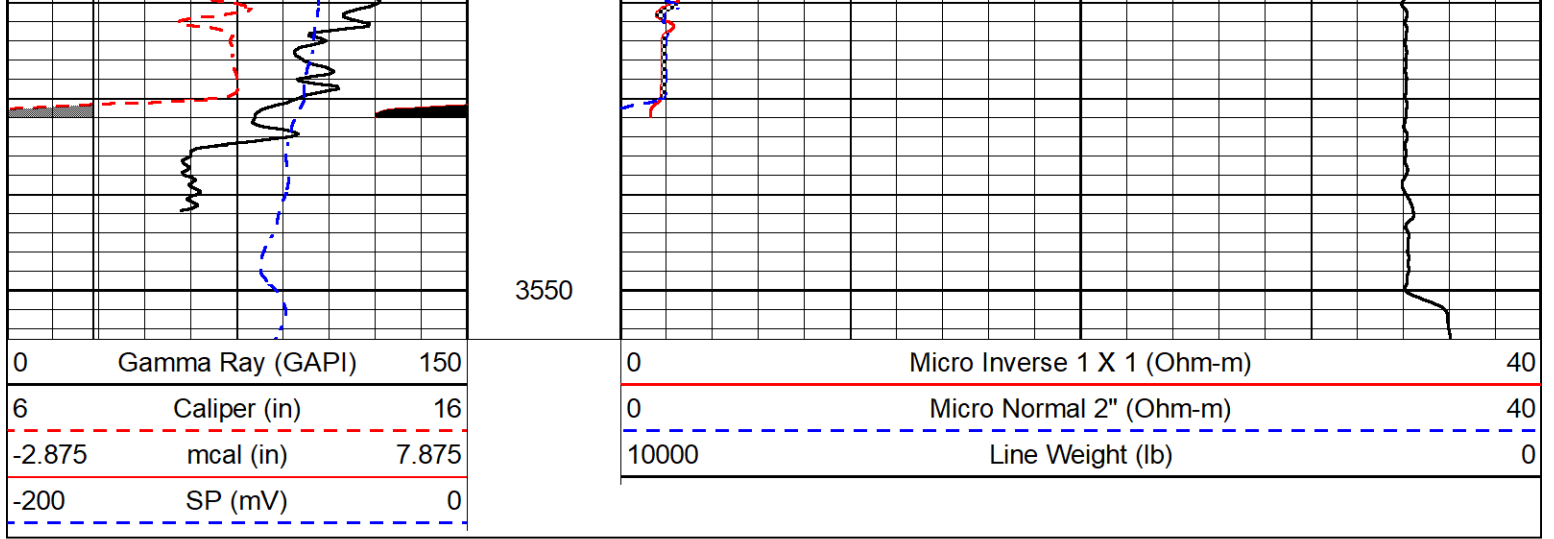
3350

3400

3450

3500





Calibration Report

Database File darrah_wyly a 3.db
 Dataset Pathname stack/pass5.1
 Dataset Creation Wed Mar 09 12:54:59 2022

Dual Induction Calibration Report

Serial-Model: 501 HT-M&W
 Surface Cal Performed: Wed Feb 23 19:44:50 2022

Loop:	Readings		References		Results		
	Air	Loop	Air	Loop	m	b	
Deep	83.639	487.104	0.000	183.000	mmho/m	0.455	-34.000
Medium	113.335	1585.690	0.000	442.000	mmho/m	0.320	-31.000

Compensated Density Calibration Report

Serial-Model: 305-05-M&W
 Source #: 20762B
 Master Calibration Performed: Mon Feb 28 14:58:34 2022

Master Calibration

	Density		Far Detector	Near Detector	
Magnesium	1.755	g/cc	8758.11	9709.36	cps
Aluminum	2.620	g/cc	1513.14	5652.54	cps
Spine Angle = 72.88			Density/Spine Ratio = 0.471		
	Size		Reading		
Small Ring	4.00	in	1.75		
Large Ring	14.00	in	1.38		

Compensated Neutron Calibration Report

Serial-Model: 207-MW-M&W
 Source #: 100046B
 Master Calibration Performed: Mon Nov 29 15:06:24 2021

Master Calibration

Detector	Readings	Target	Normalization
Short Space	6240.00 cps	1000.00 cps	1.6025
Long Space	460.00 cps	1000.00 cps	1.9500

Gamma Ray Calibration Report			
Serial Number:	101		
Tool Model:	M&W		
Performed:	Mon Jan 24 19:14:46 2022		
Calibrator Value:	500.0	GAPI	
Background Reading:	24.0	cps	
Calibrator Reading:	637.0	cps	
Sensitivity:	0.5500	GAPI/cps	

Calibration Report	
Database File	darrah_wyly a 3.db
Dataset Pathname	sonmel/pass2.3
Dataset Creation	Wed Mar 09 13:49:21 2022

Microlog Calibration Report									
Serial-Model:		0002G-GO							
Performed:		Fri May 9 09:19:54 2014							
	Readings			V	References			Results	
	Zero	Cal			Zero	Cal		m	b
Normal	0.0125	0.9003		0.0000	25.0000	Ohm-m	45.0000	-0.2000	
Inverse	0.0056	1.1474		0.0000	25.0000	Ohm-m	25.0000	1.3000	
Caliper	1.3245	0.4100		6.0000	16.0000	in	178.0000	5.7250	

 MIDWEST WIRELINE	Company	Darrah Oil Company, LLC
	Well	Wyly A #3
	Field	Pritchard
	County	Barton
	State	Kansas