



**COMPENSATED
DENSITY / NEUTRON
LOG**

Company BLACK ROCK RESOURCES, LLC.
Well POLIFKA #18-2
Field UNNAMED
County GOVE
State KANSAS

Company BLACK ROCK RESOURCES, LLC.
Well POLIFKA #18-2
Field UNNAMED
County GOVE State KANSAS

Location: 1067' FSL & 634' FEL
NW-NE-SE-SE
API #: 15-063-22405-0000
Permanent Datum GROUND LEVEL Elevation 2516
Log Measured From KELLY BUSHING 10' A.G.L.
Drilling Measured From KELLY BUSHING
SEC 18 TWP 13S RGE 26W
Other Services
DILMEL
Elevation
K.B. 2526
D.F. 2524
G.L. 2516

Date	4/19/22
Run Number	ONE
Depth Driller	4418
Depth Logger	4419
Bottom Logged Interval	4395
Top Log Interval	3400
Casing Driller	8 5/8"@270'
Casing Logger	270
Bit Size	7 7/8"
Type Fluid in Hole	CHEMICAL MUD
Density / Viscosity	9.2/62
pH / Fluid Loss	10.5/6.8
Source of Sample	FLOWLINE
Rm @ Meas. Temp	.900@80F
Rmf @ Meas. Temp	.675@80F
Rmc @ Meas. Temp	1.080@80F
Source of Rmf / Rmc	MEASUREMENT
Rm @ BHT	.600@120F
Time Circulation Stopped	2 HOURS
Time Logger on Bottom	10:00 P.M.
Maximum Recorded Temperature	120F
Equipment Number	922339
Location	HAYS, KANSAS
Recorded By	JEFF LUEBBERS
Witnessed By	CHAD COUNTS
	COLE ROBBEN

<<< Fold Here >>>

All interpretations are opinions based on inferences from electrical or other measurements and we cannot and do not guarantee the accuracy or correctness of any interpretation, and we shall not, except in the case of gross or willful negligence on our part, be liable or responsible for any loss, costs, damages, or expenses incurred or sustained by anyone resulting from any interpretation made by any of our officers, agents or employees. These interpretations are also subject to our general terms and conditions set out in our current Price Schedule.

15-063-22405-0000 Comments

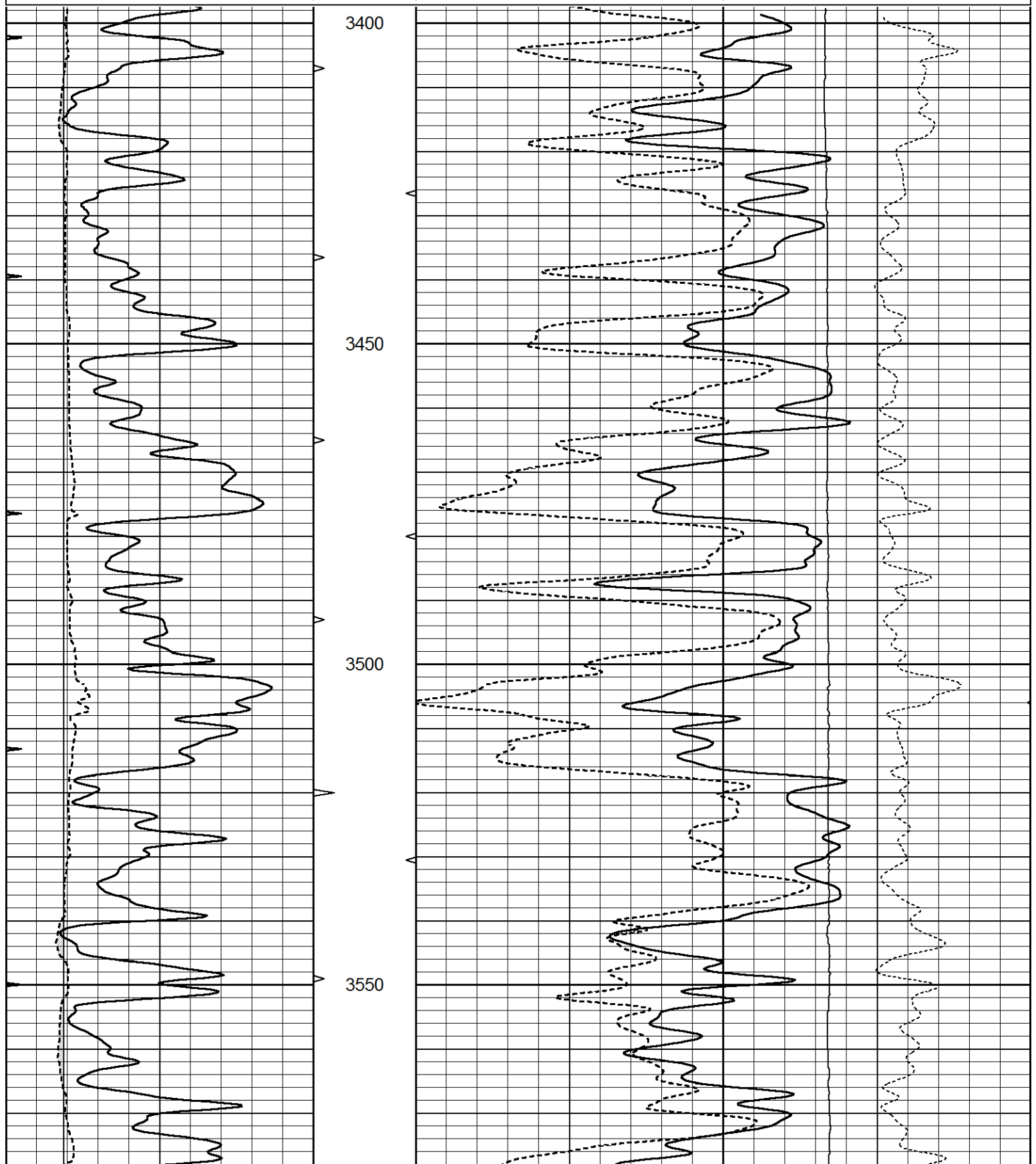
THANK YOU FOR USING ELI WIRELINE HAYS, KANSAS (785) 628-6395
DIRECTIONS
QUINTER KS. 10 MI S. ON CASTLE ROCK RD. TO P RD, 1/4 W, S. INTO

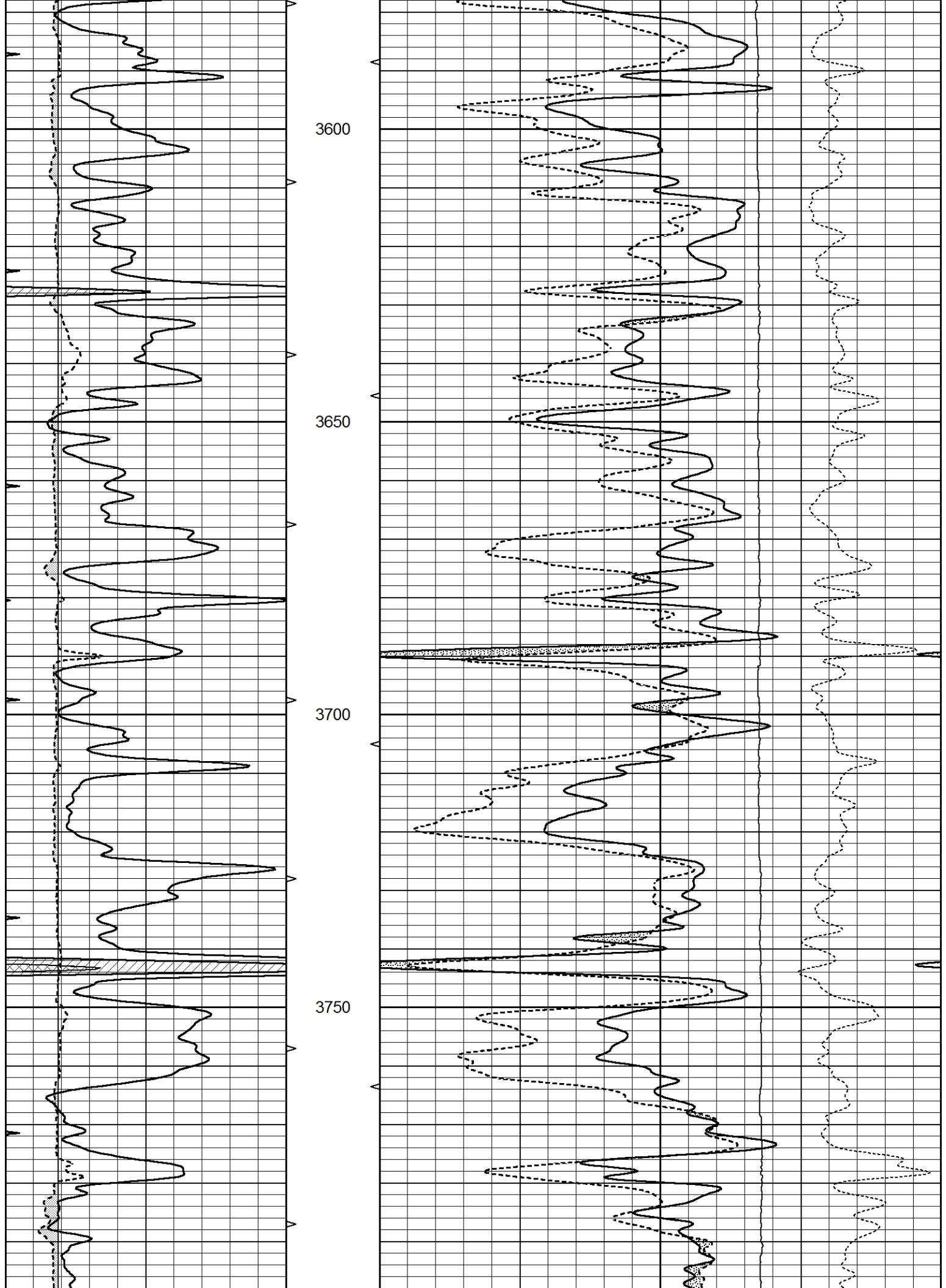


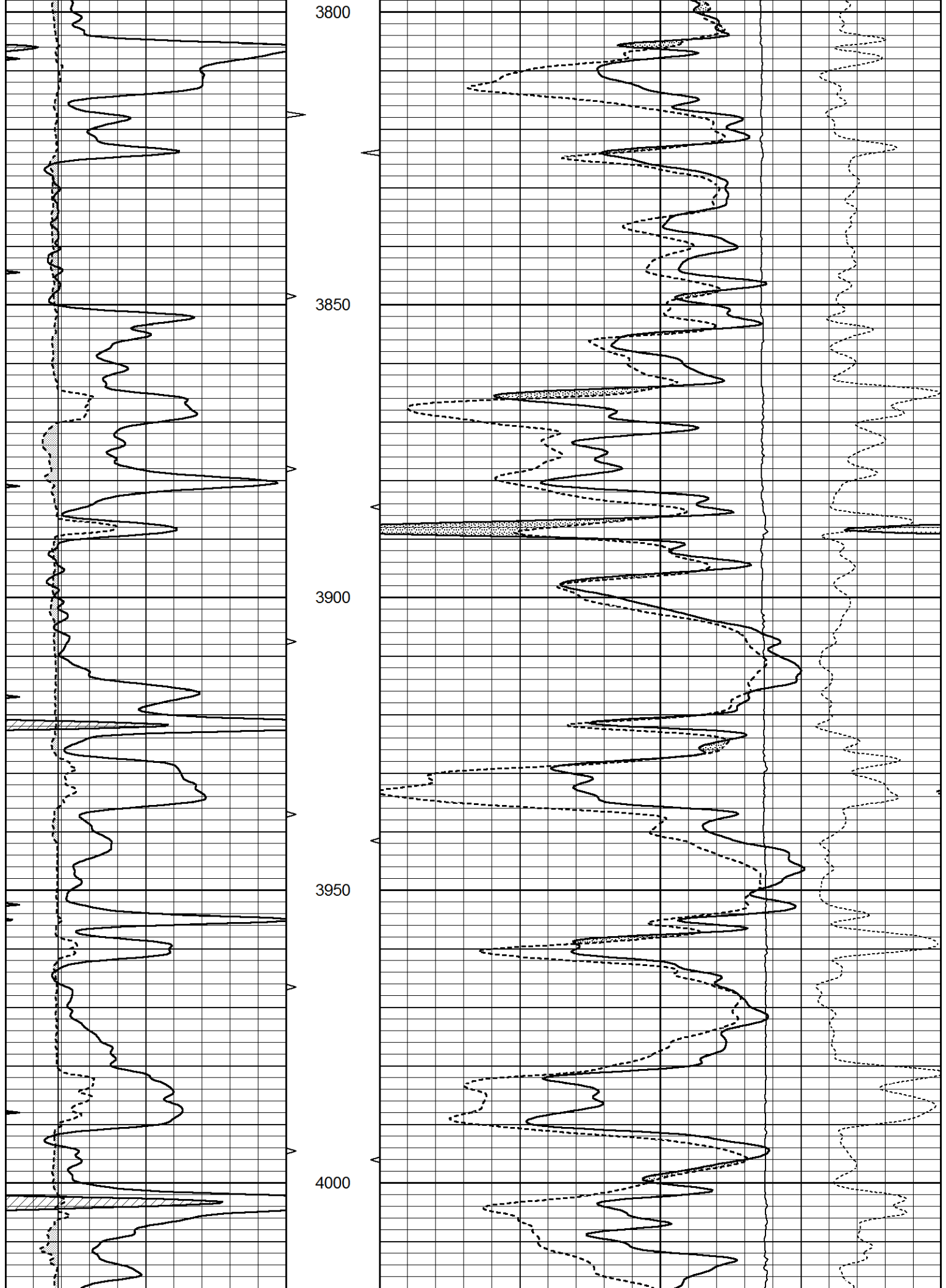
MAIN SECTION

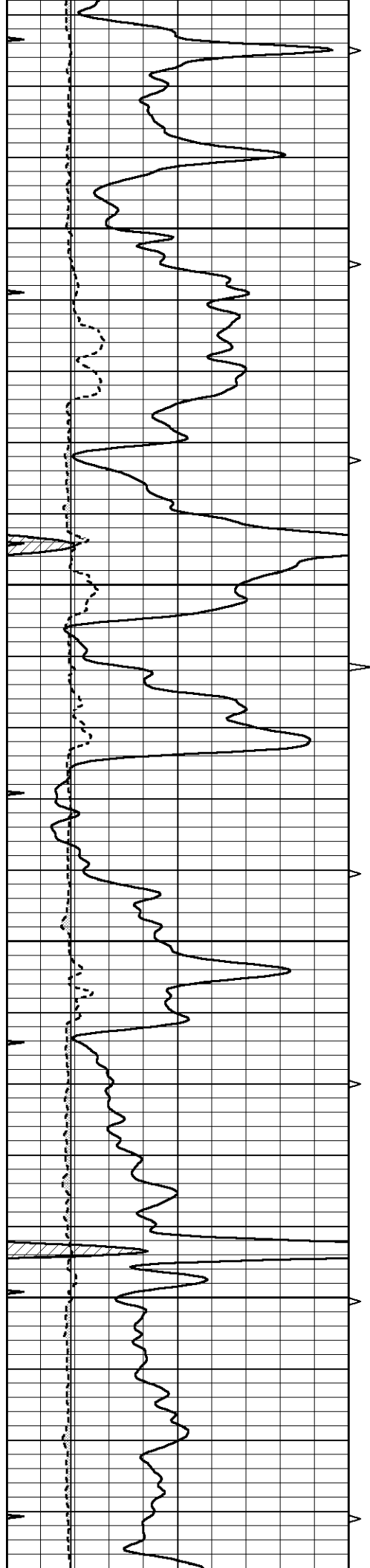
Database File 6331ddn.db
 Dataset Pathname pass5.1P
 Presentation Format den_neu
 Dataset Creation Wed Apr 20 00:33:21 2022
 Charted by Depth in Feet scaled 1:240

0	GAMMA RAY (GAPI)	150	ABHV	30	COMPENSATED DENSITY (pu)	-10	
6	DCAL (in)	16	10 (ft3)	0	COMPENSATED NEUTRON (pu)	-10	
0	MINMK	20	TBHV		-0.25 CORRECTION (g/cc)	0.25	
			0 (ft3)	10	0	LTEN (lb)	5000







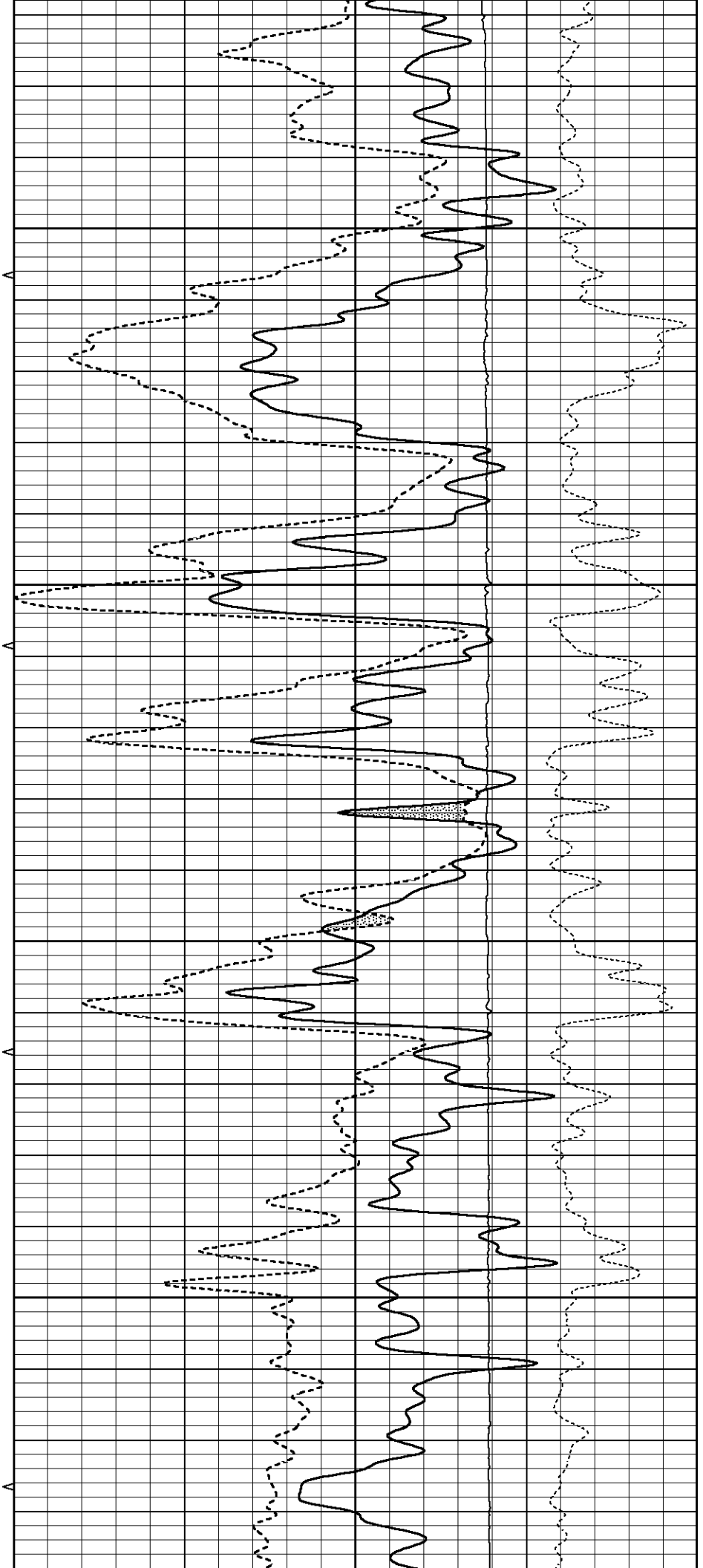


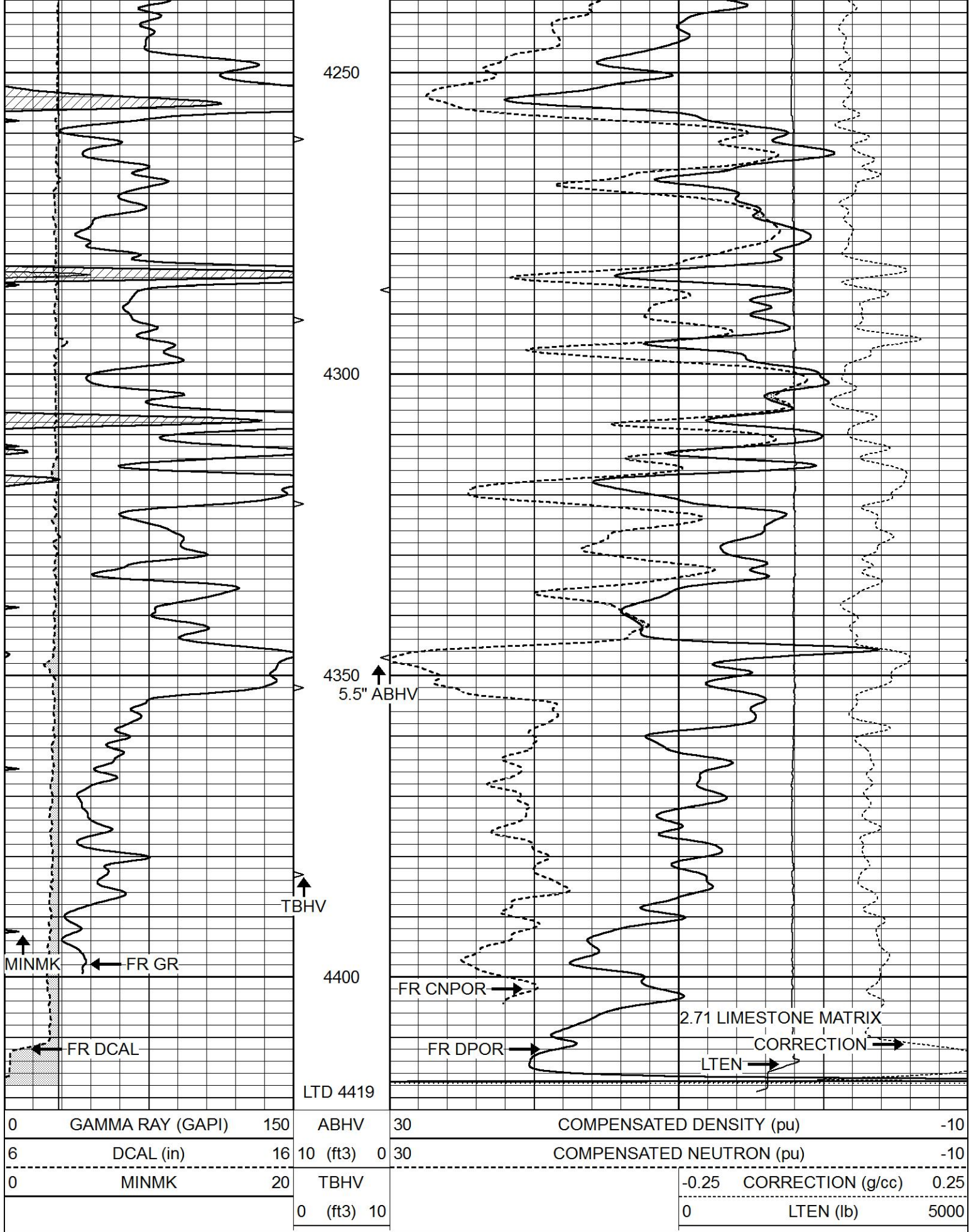
4050

4100

4150

4200



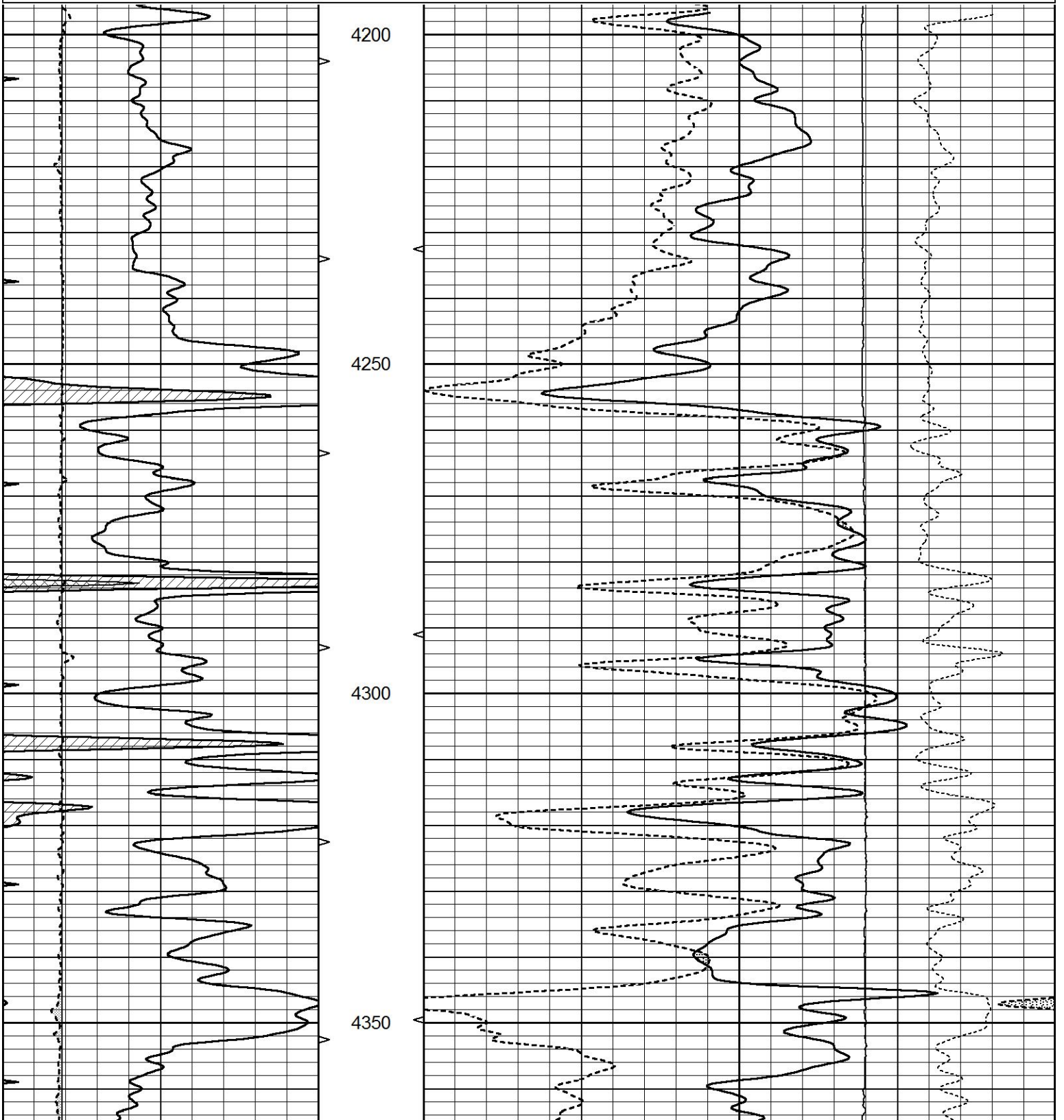


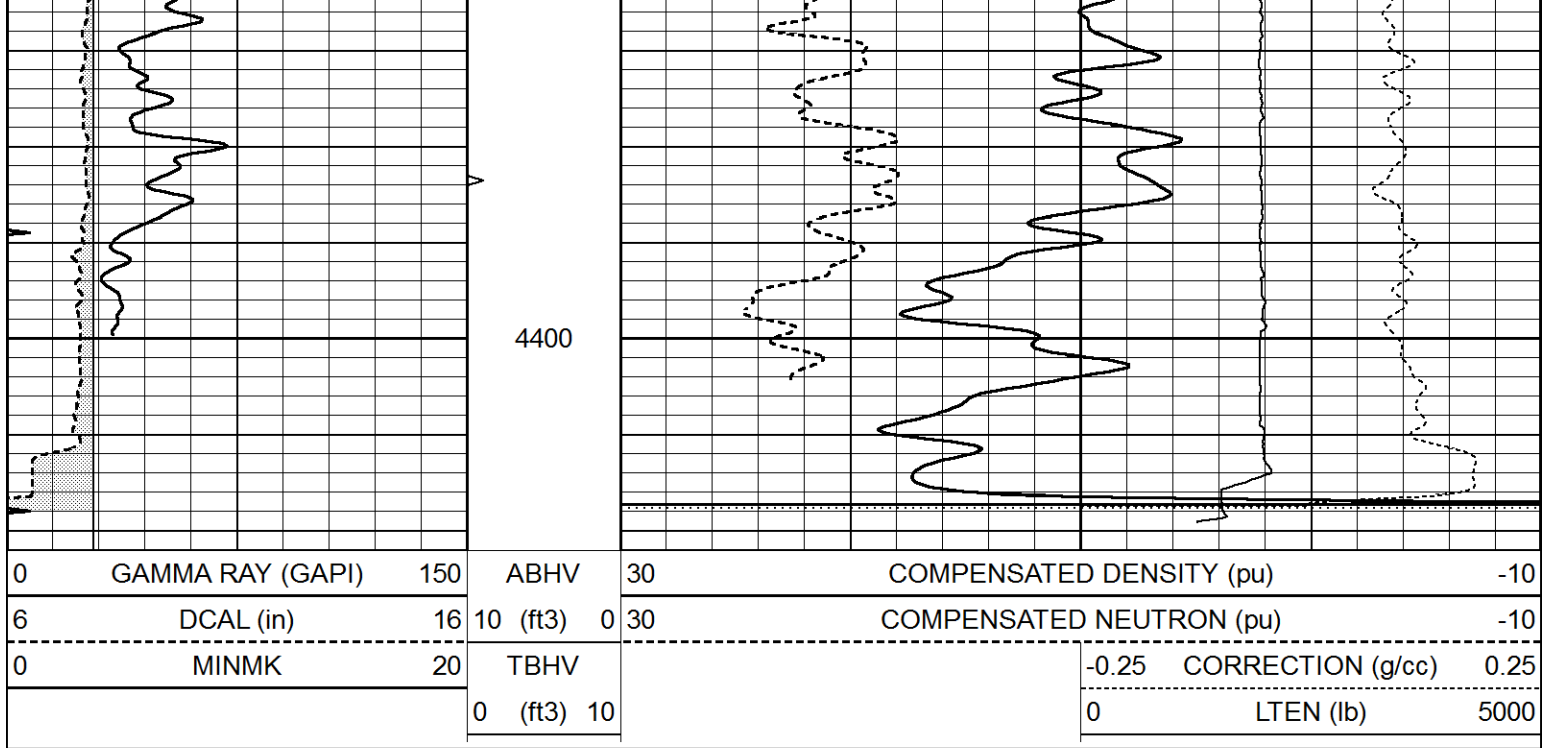
REPEAT SECTION

REPEAT SECTION

Database File 6331ddn.db
 Dataset Pathname pass4.2
 Presentation Format den_neu
 Dataset Creation Tue Apr 19 23:57:35 2022
 Charted by Depth in Feet scaled 1:240

0	GAMMA RAY (GAPI)	150	ABHV	30	COMPENSATED DENSITY (pu)	-10
6	DCAL (in)	16	10 (ft3)	0 30	COMPENSATED NEUTRON (pu)	-10
0	MINMK	20	TBHV		-0.25 CORRECTION (g/cc)	0.25
			0 (ft3) 10		0 LTEN (lb)	5000





Calibration Report

Database File 6331ddn.db
 Dataset Pathname pass5.1P
 Dataset Creation Wed Apr 20 00:33:21 2022

Litho Density Calibration Report

Serial: 003 Model: PRB

Master Calibration

Performed Mon Apr 18 10:49:34 2022

	Background	Magnesium	Aluminum	Aluminum+Fe	
Window 1	1567.8	10473.4	3487.3	3101.8	cps
Window 2	1450.7	9386.7	3166.2	2840.8	cps
Window 3	1337.4	7279.4	2620.9	2420.3	cps
Window 4	359.5	362.8	361.7	361.9	cps
Long Space	0.0	7936.1	1715.5	1390.2	cps
Short Space	3.4	3300.5	2130.6	1771.3	cps
Rho		1.7100	2.5900	0.0000	g/cc
Pe		2.0000	2.7500	5.7900	

Rib Angle : 44.1 Rib Slope : 0.967 Density/Spine Ratio : 0.552
 Spine Angle : 74.1 Spine Slope : 3.500 Spine Intercept : -19.4

Before Survey Verification

Performed Wed Dec 31 18:00:00 1969

Window 1	0.0	0.0	0.0	0.0	cps
Window 2	0.0	0.0	0.0	0.0	cps
Window 3	0.0	0.0	0.0	0.0	cps
Window 4	0.0	0.0	0.0	0.0	cps
Long Space	0.0	0.0	0.0	0.0	cps
Short Space	0.0	0.0	0.0	0.0	cps
Measured Rho		0.0000	0.0000	0.0000	g/cc
Measured Correction		0.0000	0.0000	0.0000	g/cc
Measured Pe			0.0000	0.0000	

After Survey Verification

Performed Wed Dec 31 18:00:00 1969

Window 1	0.0	0.0	0.0	0.0	cps
Window 2	0.0	0.0	0.0	0.0	cps
Window 3	0.0	0.0	0.0	0.0	cps
Window 4	0.0	0.0	0.0	0.0	cps
Long Space	0.0	0.0	0.0	0.0	cps
Short Space	0.0	0.0	0.0	0.0	cps
Measured Rho		0.0000	0.0000	0.0000	g/cc
Measured Correction		0.0000	0.0000	0.0000	g/cc
Measured Pe			0.0000	0.0000	

Compensated Neutron Calibration Report

Serial Number: 070808PMC
Tool Model: NABORS

PRE-SURVEY VERIFICATION

Detector	Readings	Measured	Target
Short Space	cps		
Long Space	cps	pu	pu

POST-SURVEY VERIFICATION

Detector	Readings	Measured	Target
Short Space	cps		
Long Space	cps	pu	pu

Gamma Ray Calibration Report

Serial Number: 070558
Tool Model: OPEN_GR
Performed: Tue Mar 22 20:25:25 2022

Calibrator Value: 1.0 GAPI

Background Reading: 0.0 cps
Calibrator Reading: 1.0 cps

Sensitivity: 0.2800 GAPI/cps