

MICRO
LOG



Company BLACK ROCK RESOURCES, LLC.
Well POLIFKA #18-2
Field UNNAMED
County GOVE State KANSAS

Location: 1067' FSL & 634' FEL
NW-NE-SE-SE
AP1 #: 15-063-22405-0000
Permanent Datum GROUND LEVEL Elevation 2516
Log Measured From KELLY BUSHING 10' A.G.L.
Drilling Measured From KELLY BUSHING
SEC 18 TWP 13S RGE 26W
Other Services
CDL/CNL
DIL
Elevation
K.B. 2526
D.F. 2524
G.L. 2516

Date	4/20/22
Run Number	TWO
Depth Driller	4418
Depth Logger	4419
Bottom Logged Interval	4417
Top Log Interval	3400
Casing Driller	8 5/8"@270'
Casing Logger	270
Bit Size	7 7/8"
Type Fluid in Hole	CHEMICAL MUD
Density / Viscosity	9.2/62
pH / Fluid Loss	10.5/6.8
Source of Sample	FLOWLINE
Rm @ Meas. Temp	.900@80F
Rmf @ Meas. Temp	.675@80F
Rmc @ Meas. Temp	1.080@80F
Source of Rmf / Rmc	MEASUREMENT
Rm @ BHT	.600@120F
Time Circulation Stopped	5 HOURS
Time Logger on Bottom	1:00 A.M.
Maximum Recorded Temperature	120F
Equipment Number	922339
Location	HAYS, KANSAS
Recorded By	JEFF LUEBBERS
Witnessed By	CHAD COUNTS
	COLE ROBBEN

<<< Fold Here >>>

All interpretations are opinions based on inferences from electrical or other measurements and we cannot and do not guarantee the accuracy or correctness of any interpretation, and we shall not, except in the case of gross or willful negligence on our part, be liable or responsible for any loss, costs, damages, or expenses incurred or sustained by anyone resulting from any interpretation made by any of our officers, agents or employees. These interpretations are also subject to our general terms and conditions set out in our current Price Schedule.

15-063-22405-0000 Comments

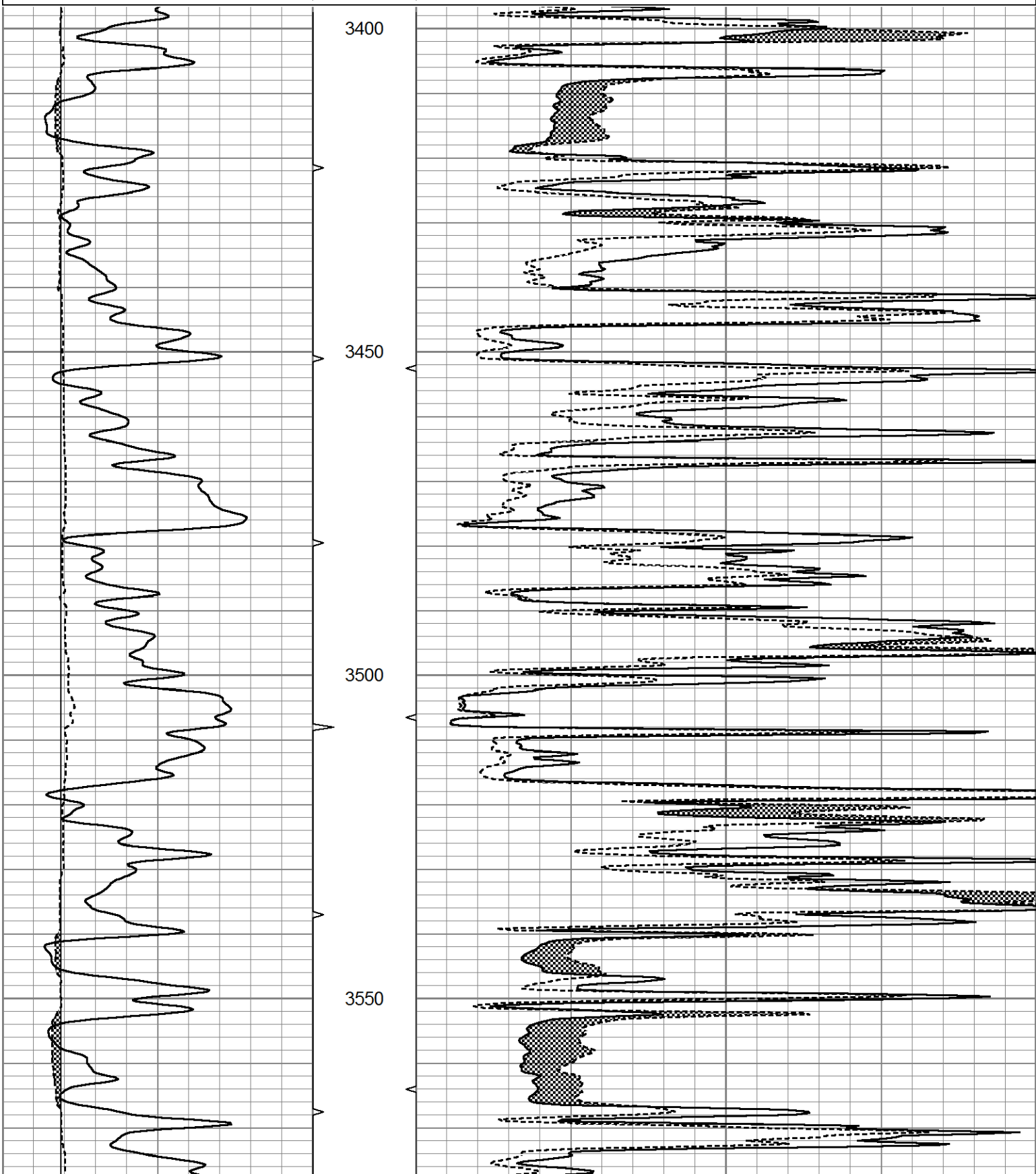
THANK YOU FOR USING ELI WIRELINE HAYS, KANSAS (785) 628-6395
DIRECTIONS
QUINTER KS. 10 MI S. ON CASTLE ROCK RD. TO P RD, 1/4 W, S. INTO

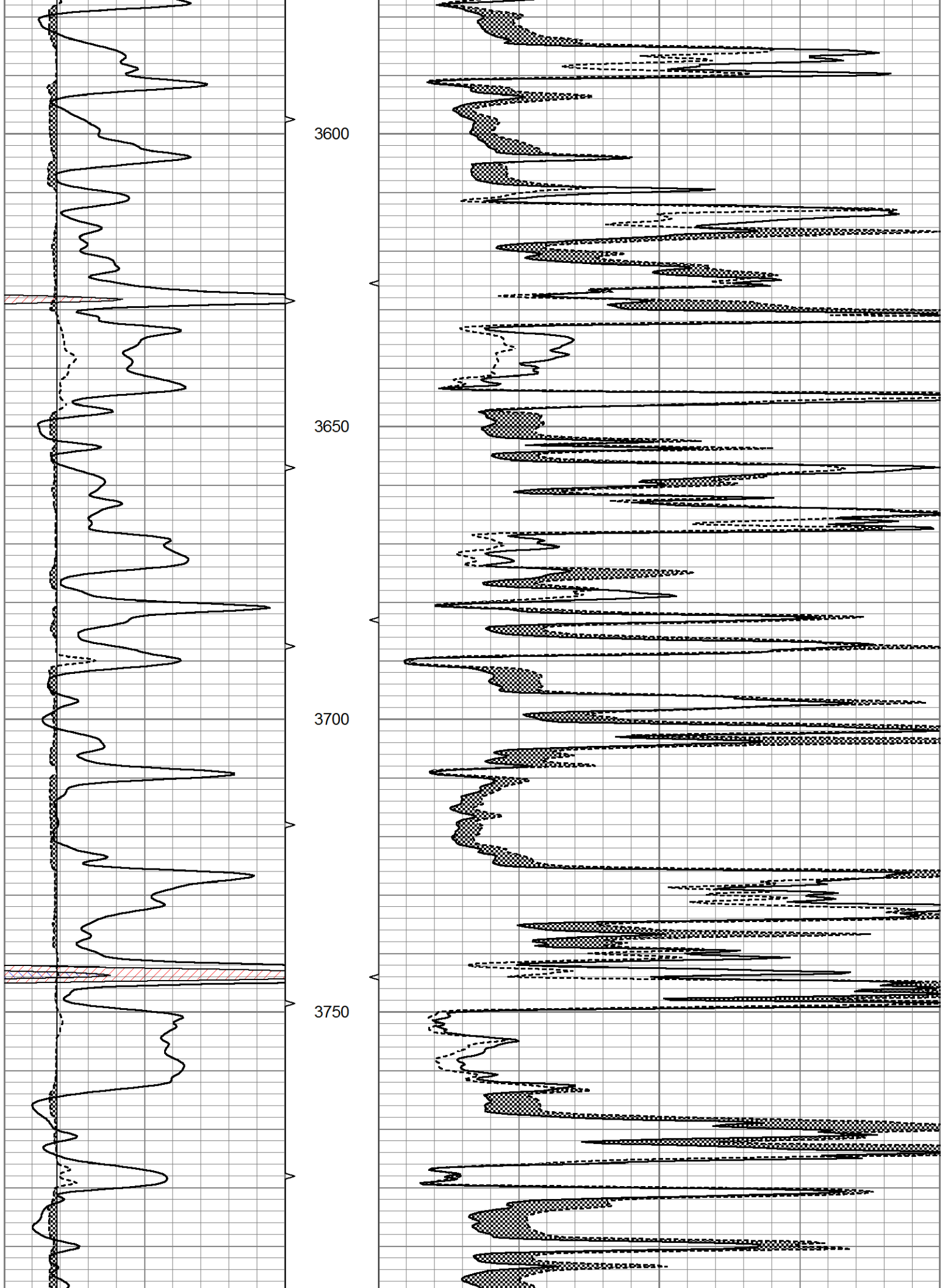


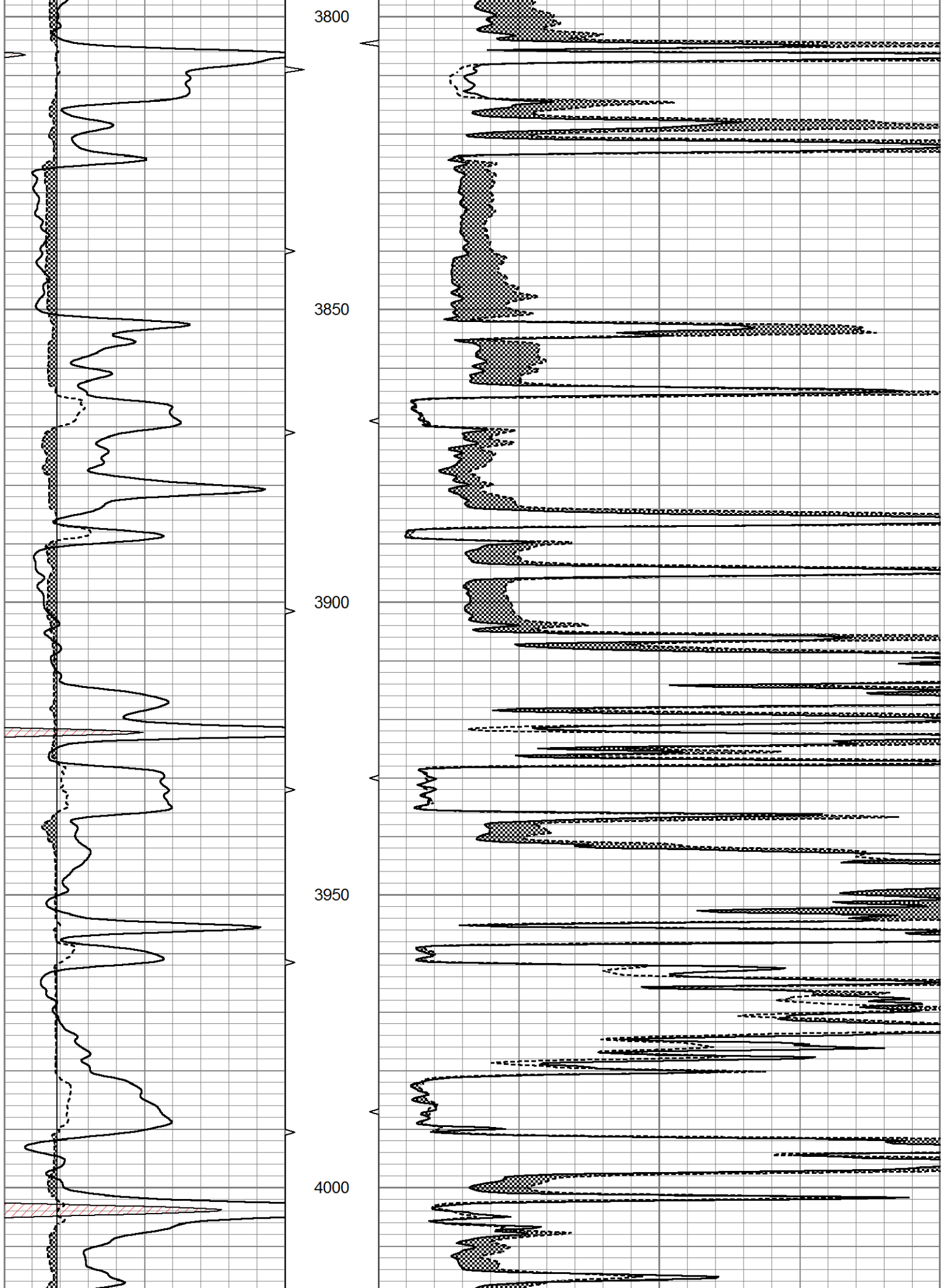
MAIN SECTION

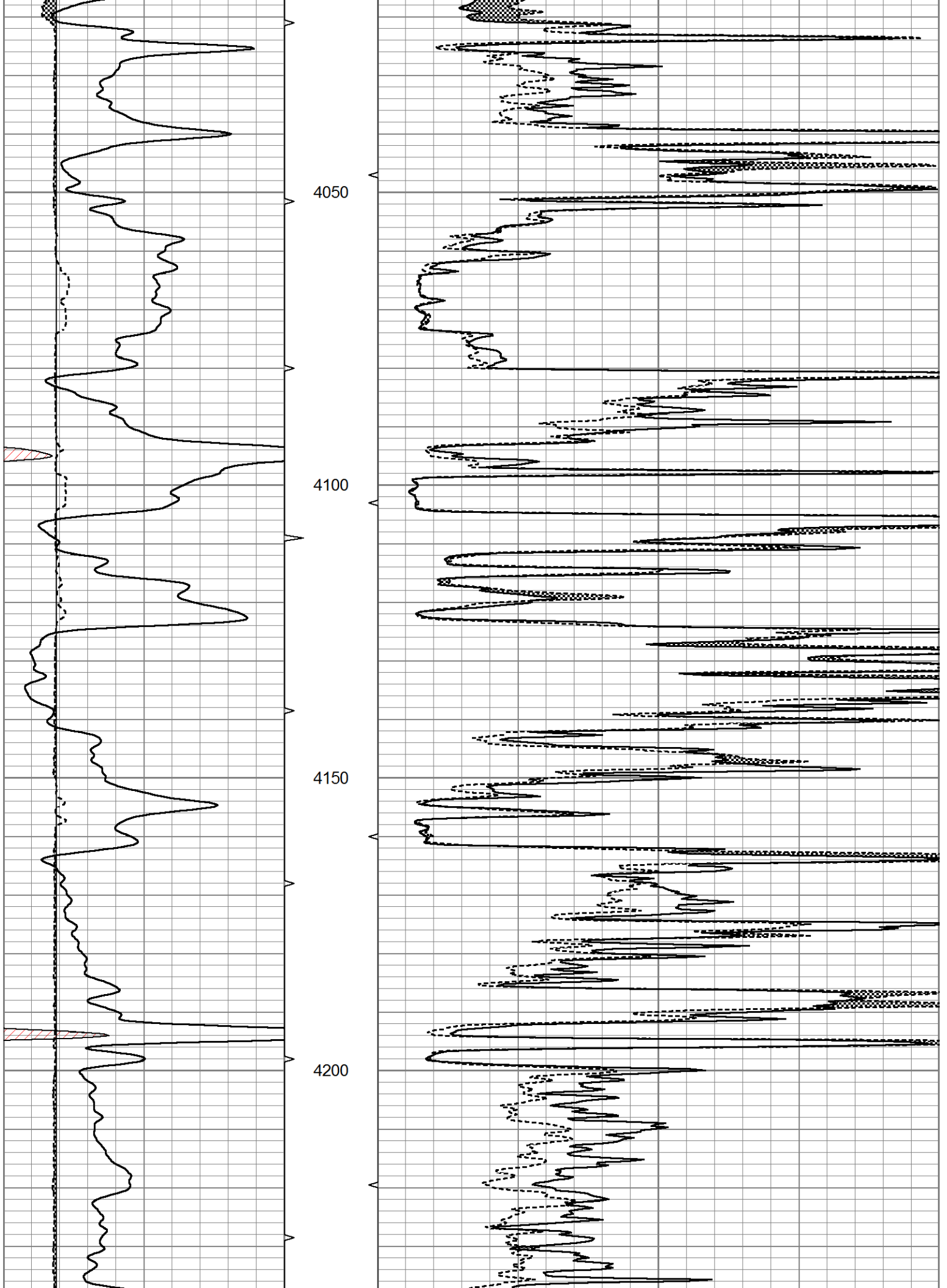
Database File 6331ddn.db
 Dataset Pathname pass8.2
 Presentation Format micro
 Dataset Creation Wed Apr 20 01:59:13 2022
 Charted by Depth in Feet scaled 1:240

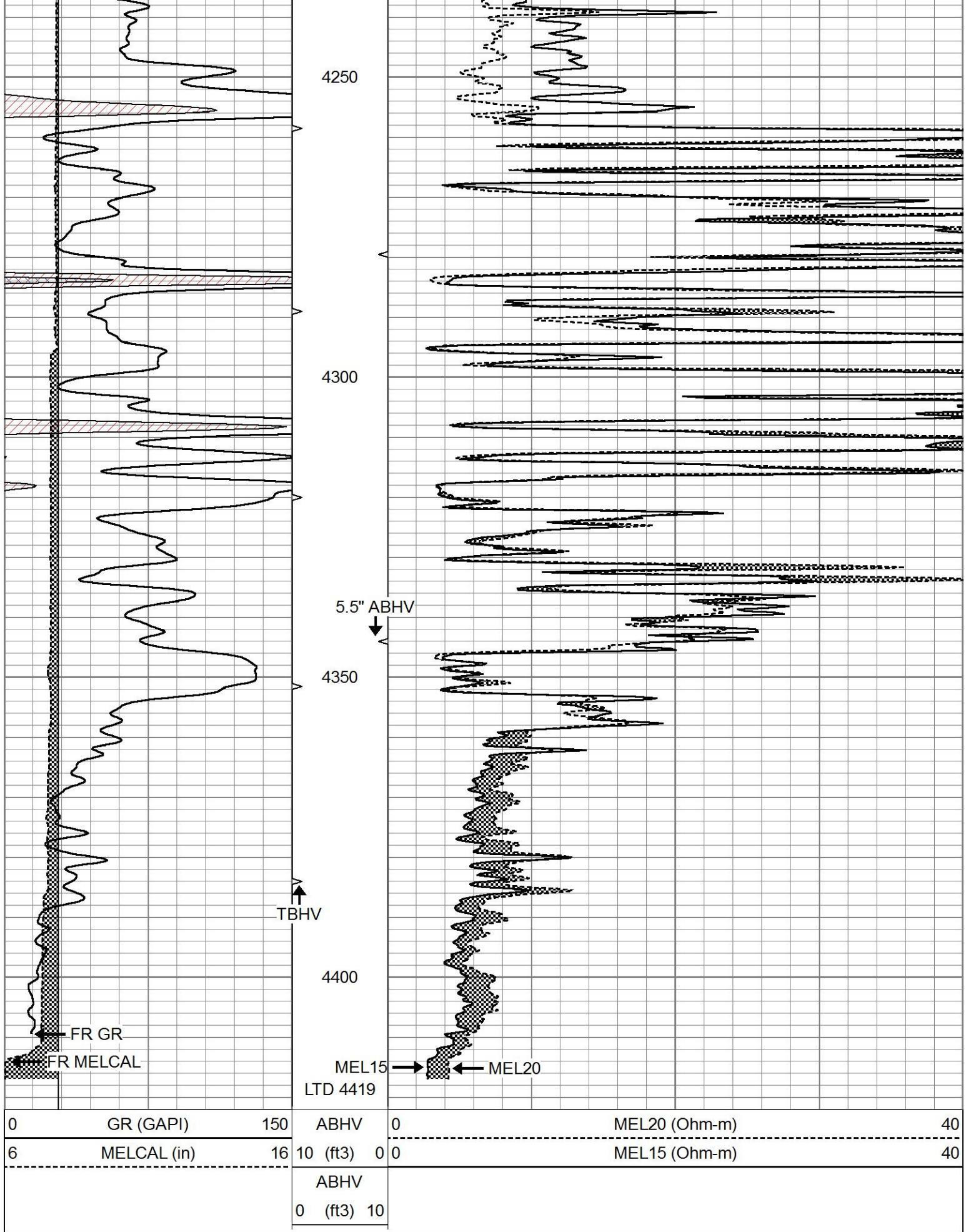
0	GR (GAPI)	150	ABHV	0	MEL20 (Ohm-m)	40
6	MELCAL (in)	16	10 (ft3)	0	MEL15 (Ohm-m)	40
			ABHV			
			0 (ft3)			









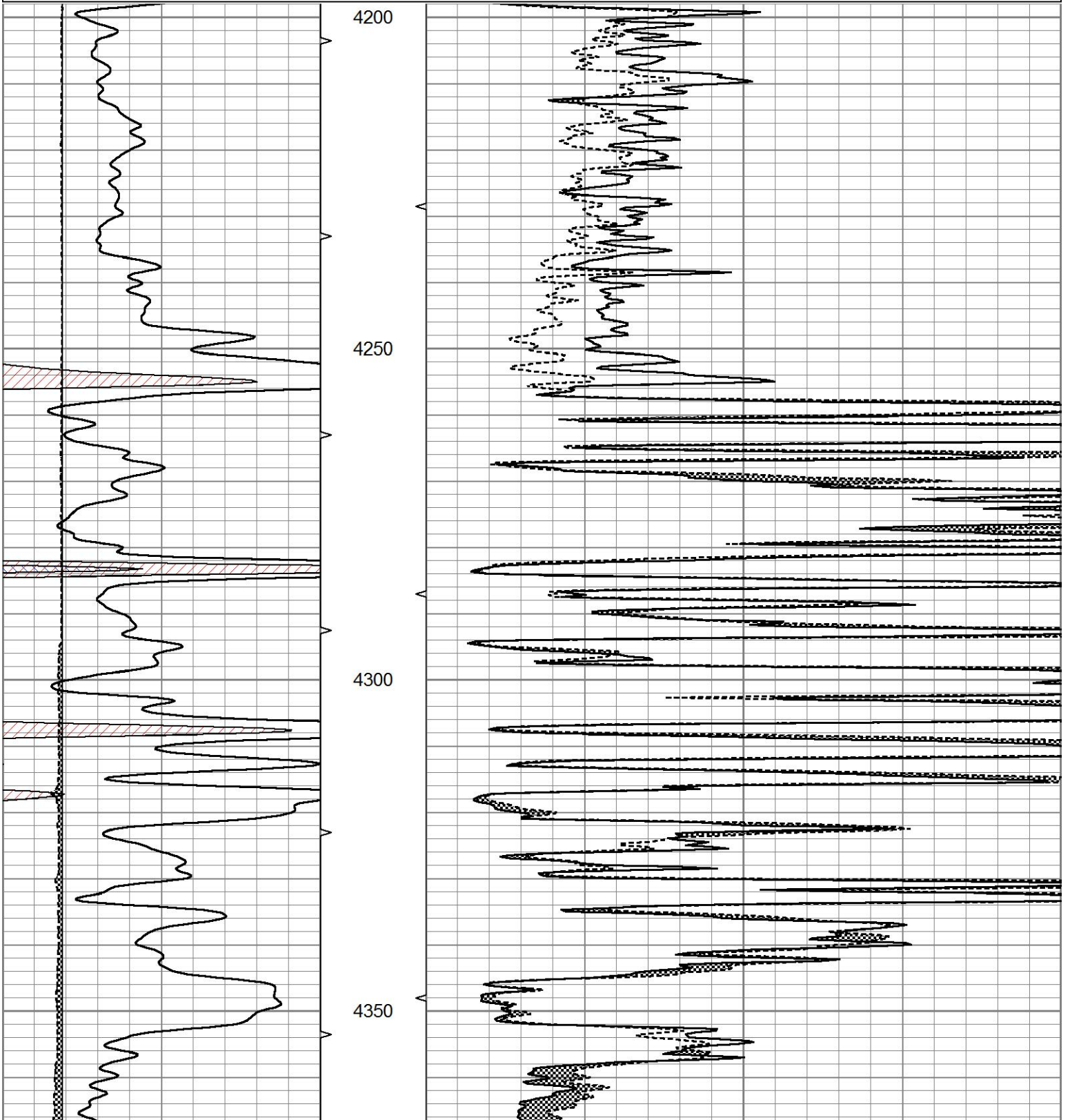


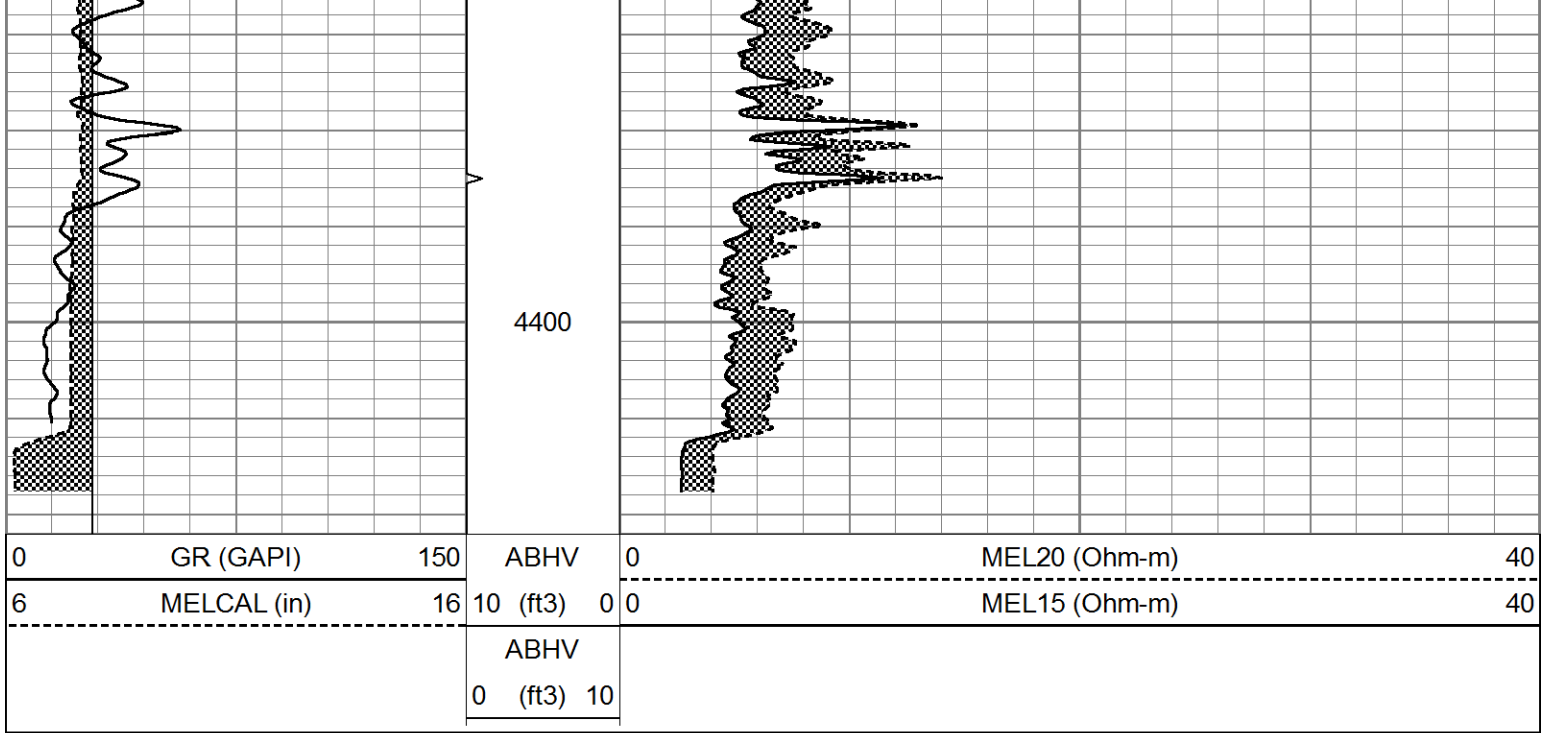
REPEAT SECTION

REPEAT SECTION

Database File 6331ddn.db
 Dataset Pathname pass7.2
 Presentation Format micro
 Dataset Creation Wed Apr 20 01:26:56 2022
 Charted by Depth in Feet scaled 1:240

0	GR (GAPI)	150	ABHV	0	MEL20 (Ohm-m)	40
6	MELCAL (in)	16	10 (ft3)	0 0	MEL15 (Ohm-m)	40
			ABHV			
			0 (ft3)	10		





Calibration Report

Database File 6331ddn.db
 Dataset Pathname pass8.2
 Dataset Creation Wed Apr 20 01:59:13 2022

MICRO Calibration Report

Serial Number: 070911
 Tool Model: ProbeN
 Performed: Sun Apr 03 07:43:56 2022

Caliper Calibration: Gain=4.706 Offset=2.118

	Low Cal	High Cal
References	8.000	16.000
Readings	1.250	2.950

1.5" Calibration: Gain=35.000 Offset=0.500

	Low Cal	High Cal
References	0.000	20.000
Readings	0.001	1.291

2" Calibration: Gain=40.000 Offset=0.500

	Low Cal	High Cal
References	0.000	20.000
Readings	0.003	1.103

Gamma Ray Calibration Report

Serial Number: 070558
 Tool Model: OPEN_GR
 Performed: Tue Mar 22 20:25:25 2022

Calibrator Value: 1.0 GAPI

Background Reading: 0.0 cps
 Calibrator Reading: 1.0 cps

Sensitivity: 0.3000 GAPI/cps