



MICRO LOG

Company DOWNING NELSON OIL COMPANY, INC.  
 Well KRAMERA A UNIT #1-17  
 Field UNNAMED  
 County RAWLINS State KANSAS

Location: API #: 15-153-21285-00-00  
 1392 FSL & 2478' FWL  
 SE - SE - NE - SW  
 SEC 17 TWP 5S RGE 36W  
 Permanent Datum GROUND LEVEL Elevation 3342  
 Log Measured From KELLY BUSHING 11' A.G.L.  
 Drilling Measured From KELLY BUSHING

Date	5/19/22		
Run Number	TWO		
Depth Driller	4932		
Depth Logger	4931		
Bottom Logged Interval	4929		
Top Log Interval	3600		
Casing Driller	8 5/8"@486'		
Casing Logger	486		
Bit Size	7 7/8		
Type Fluid in Hole	CHEMICAL MUD	CHLORIDES 800 PPM	
Density / Viscosity	9.2/49		
pH / Fluid Loss	10.0/8		
Source of Sample	FLOWLINE		
Rm @ Meas. Temp	.950@70F		
Rmt @ Meas. Temp	.713@70F		
Rmc @ Meas. Temp	1.14@70F		
Source of Rmf / Rmc	MEASUREMENT		
Rm @ BHT	.536@124F		
Time Circulation Stopped	4.5 HOURS		
Time Logger on Bottom	1:30 A.M.		
Maximum Recorded Temperature	122F		
Equipment Number	3802		
Location	HAYS, KANSAS		
Recorded By	COLE ROBBEN	TJ DREILING	
Witnessed By	MARC DOWNING		

<<< Fold Here >>>

All interpretations are opinions based on inferences from electrical or other measurements and we cannot and do not guarantee the accuracy or correctness of any interpretation, and we shall not, except in the case of gross or willful negligence on our part, be liable or responsible for any loss, costs, damages, or expenses incurred or sustained by anyone resulting from any interpretation made by any of our officers, agents or employees. These interpretations are also subject to our general terms and conditions set out in our current Price Schedule.

Comments

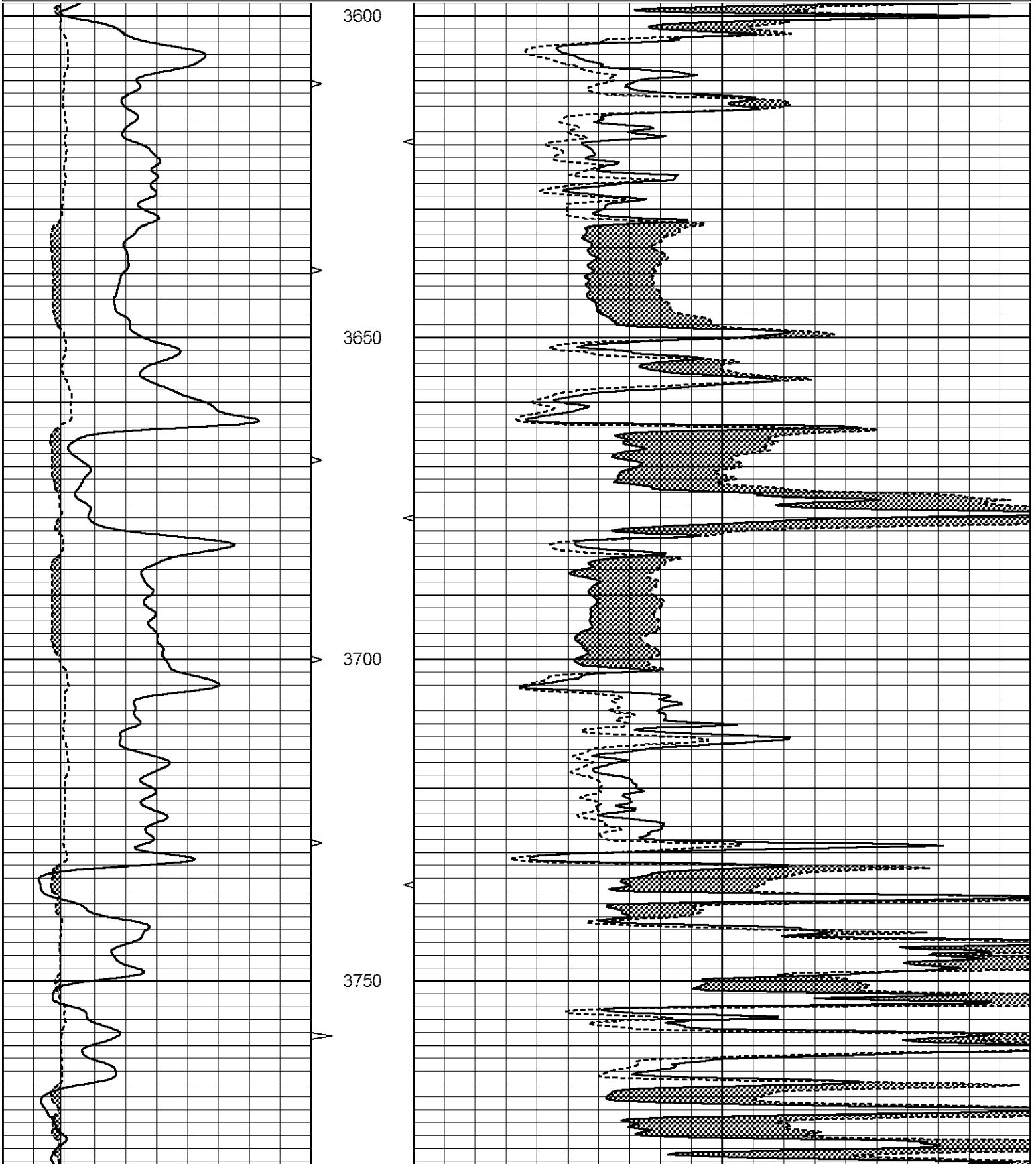
THANK YOU FOR USING ELI WIRELINE SERVICES, HAYS, KS. ( 785 ) 628-6395  
 DIRECTIONS  
 BREWSTER, KS. NORTH ON BLACKTOP TO CURVE WEST,  
 3 MILES NORTH TO ROAD D, 1/2 WEST, NORTH INTO

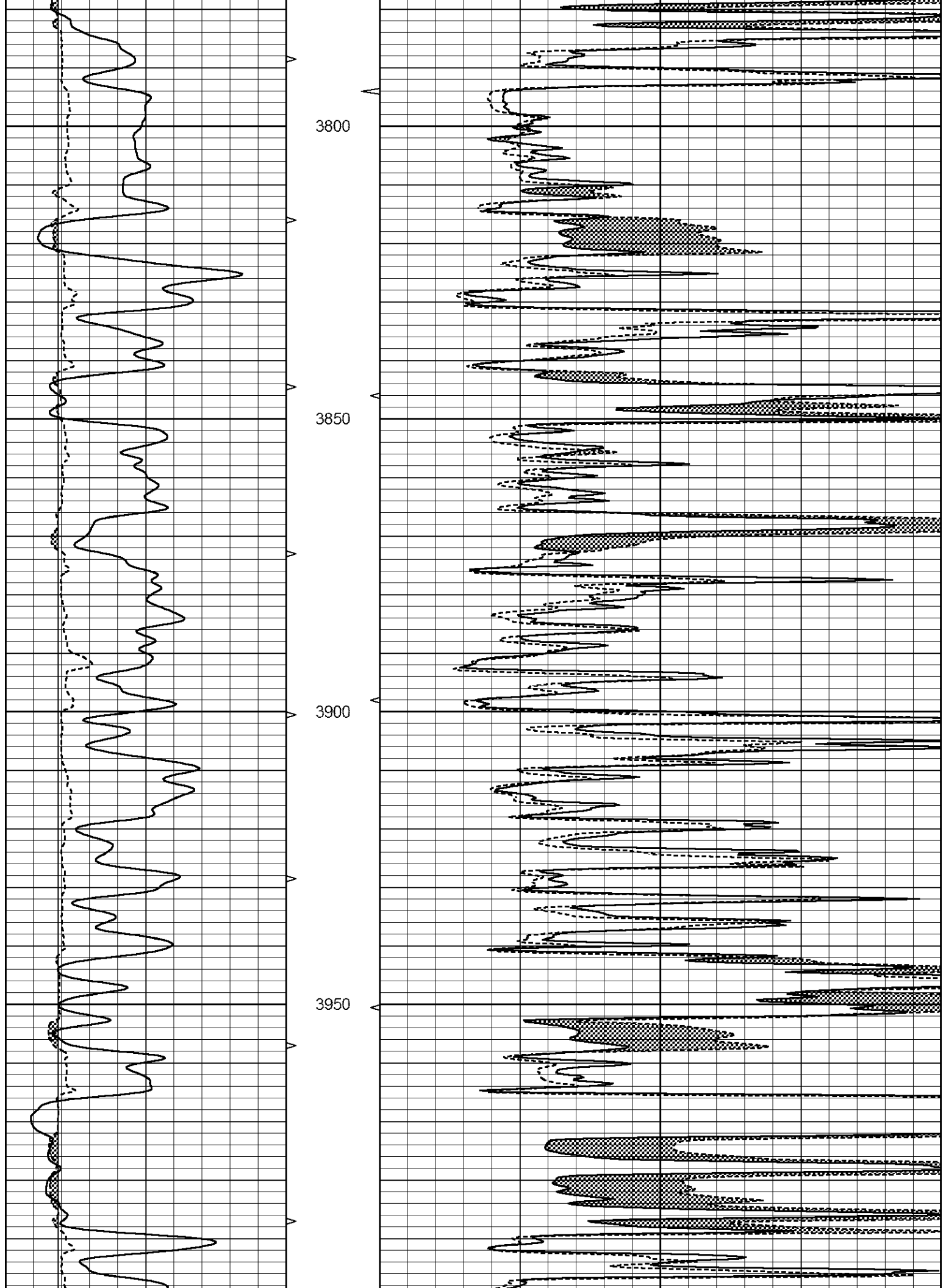


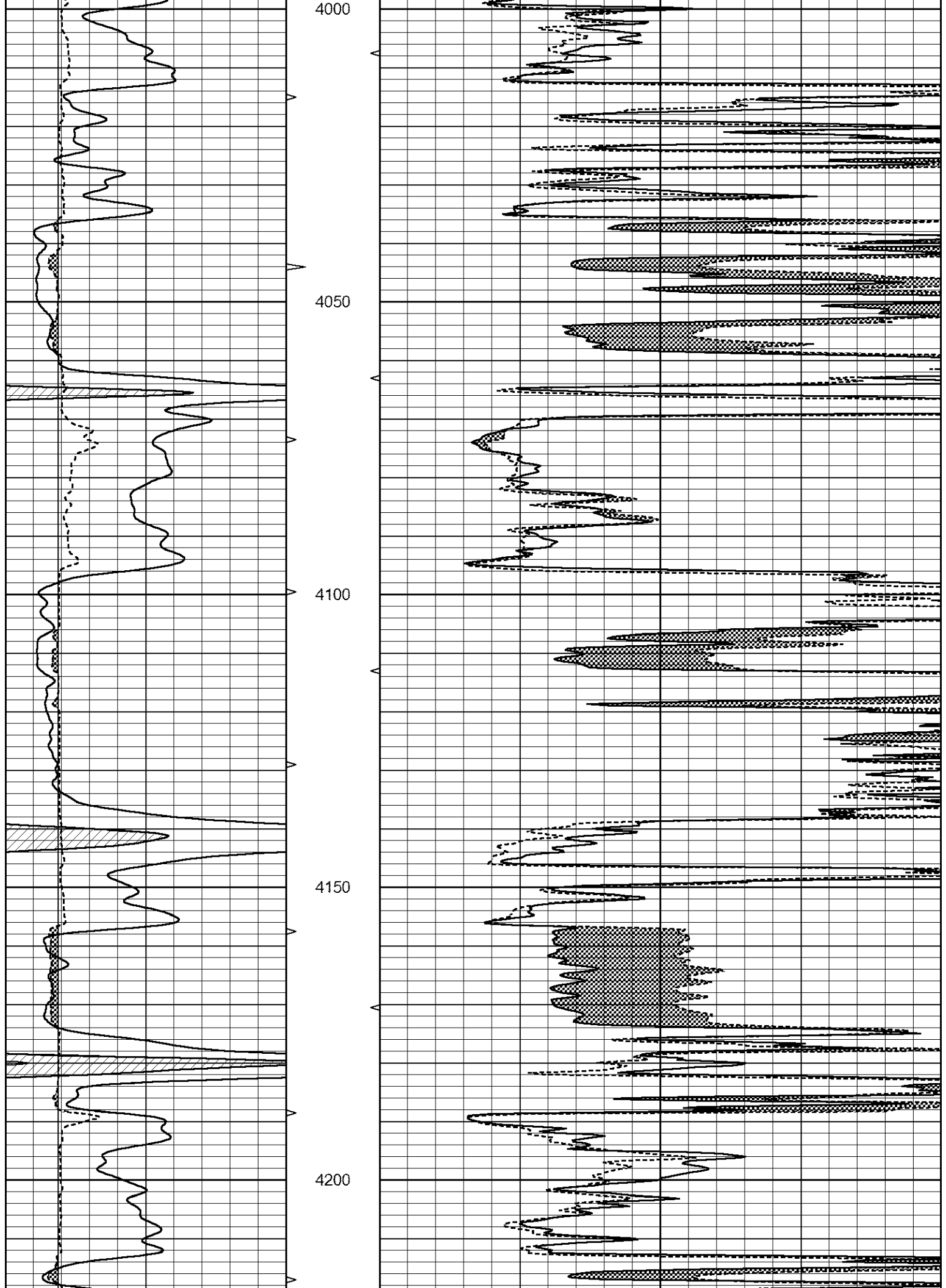
MAIN SECTION

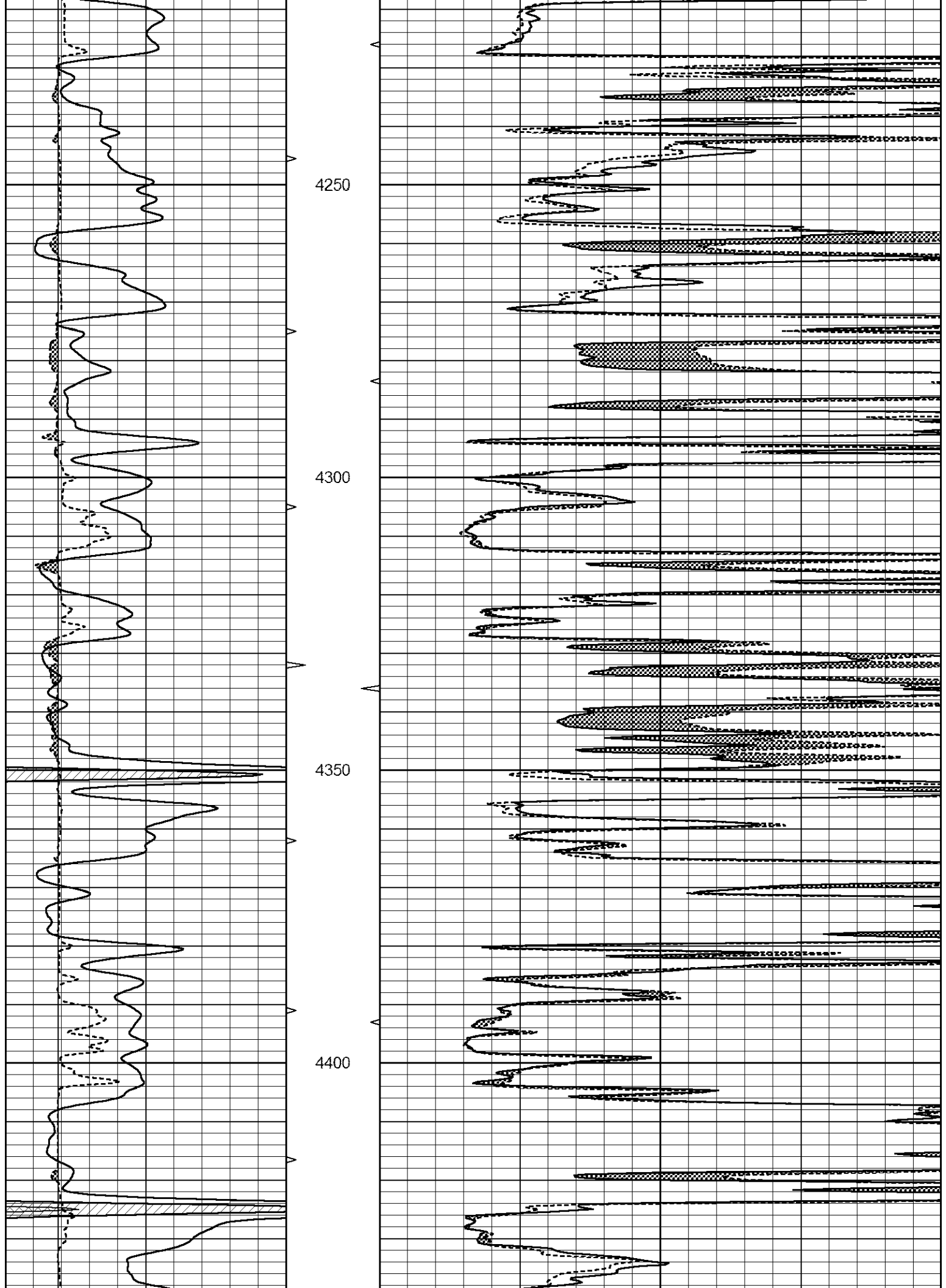
Database File 6530.db  
 Dataset Pathname pass7.1  
 Presentation Format \_micro  
 Dataset Creation Thu May 19 03:20:45 2022  
 Charted by Depth in Feet scaled 1:240

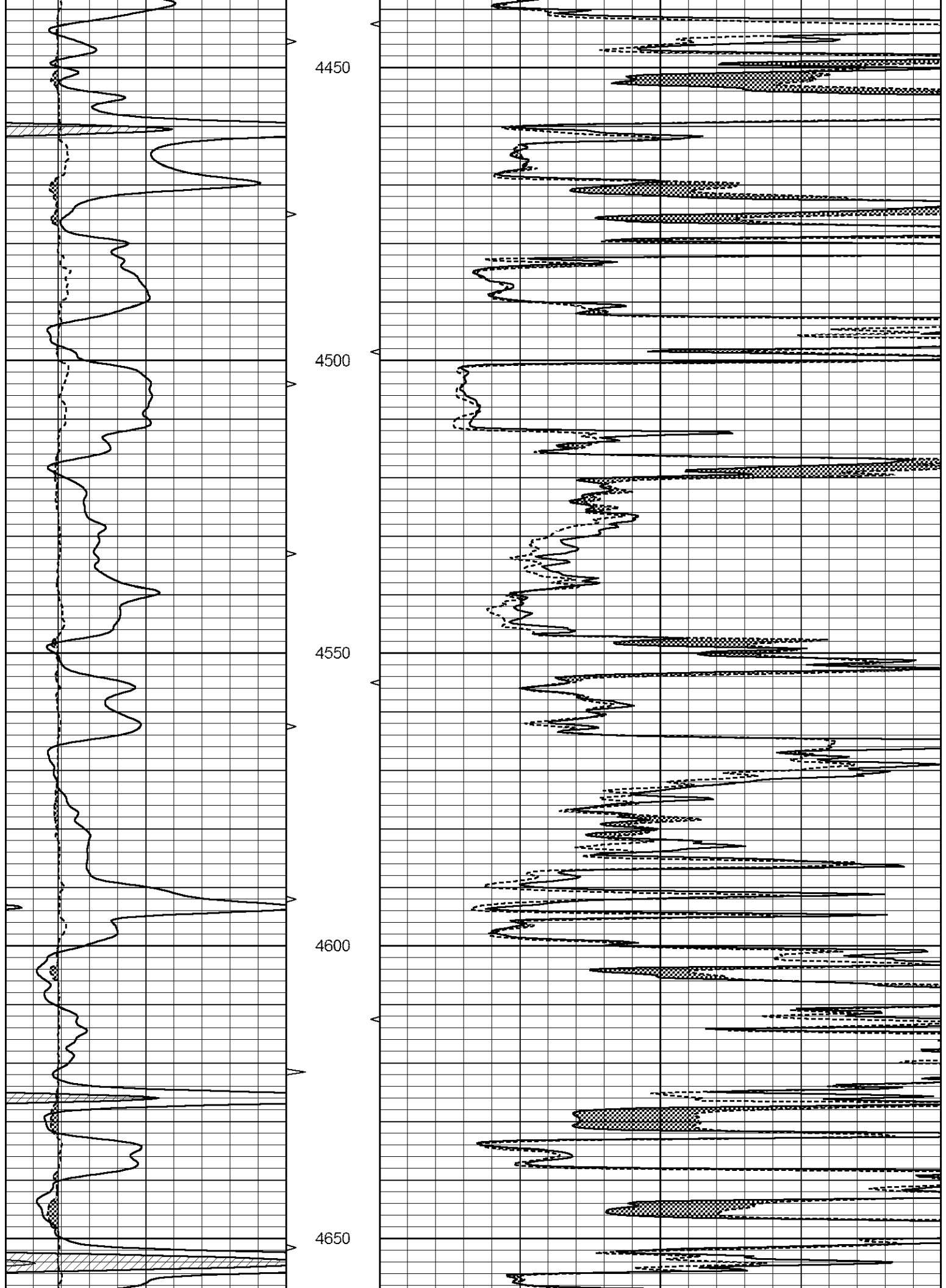
0	GAMMA RAY (GAPI)	150	ABHV	0	MEL1.5 (Ohm-m)	40
6	CALIPER (in)	16	10 (ft3)	0 0	MEL2.0 (Ohm-m)	40
			TBHV			
			0 (ft3)	10		

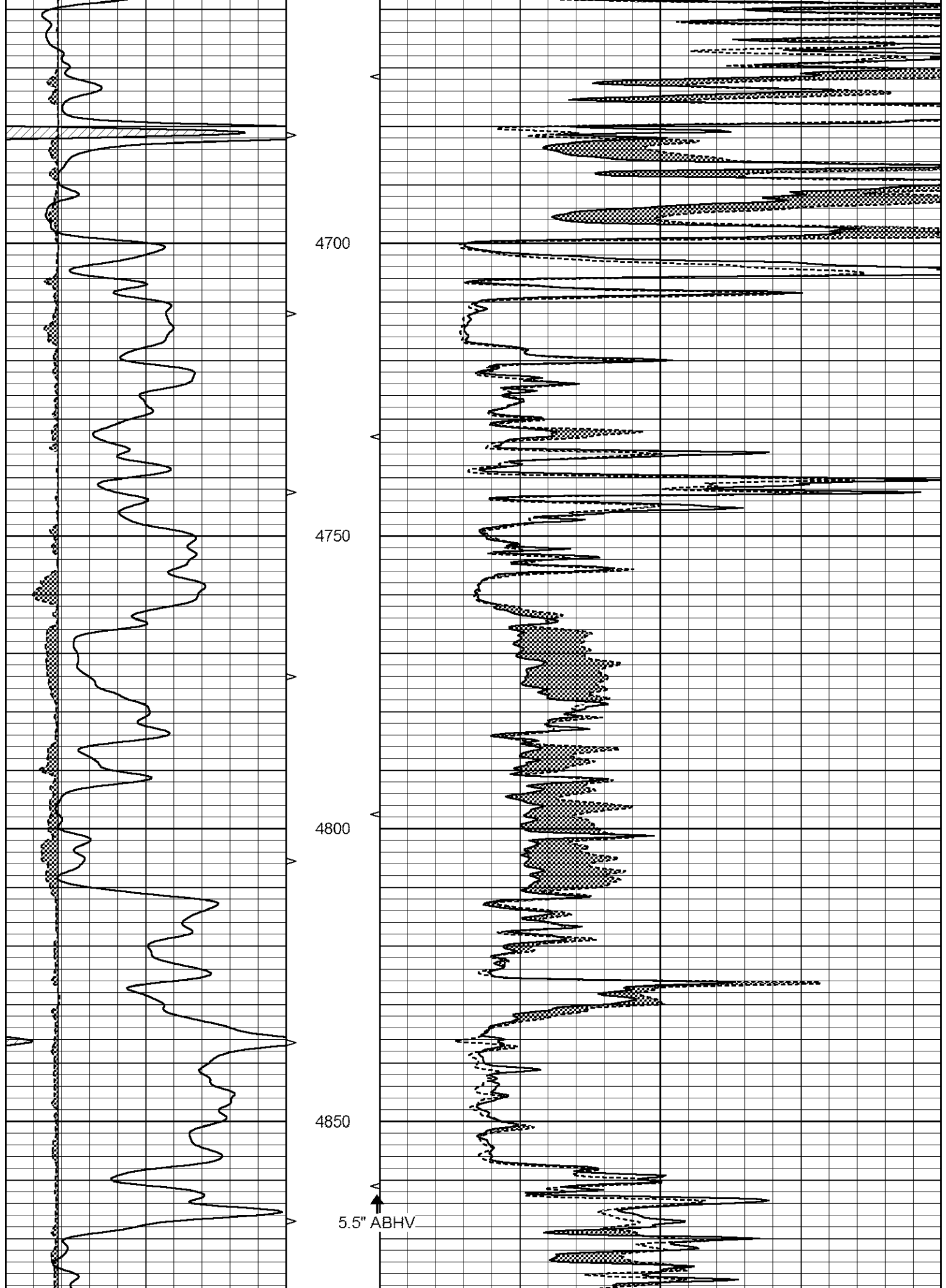


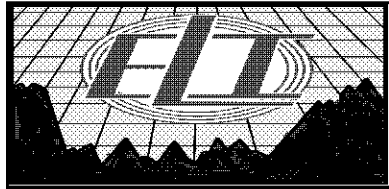
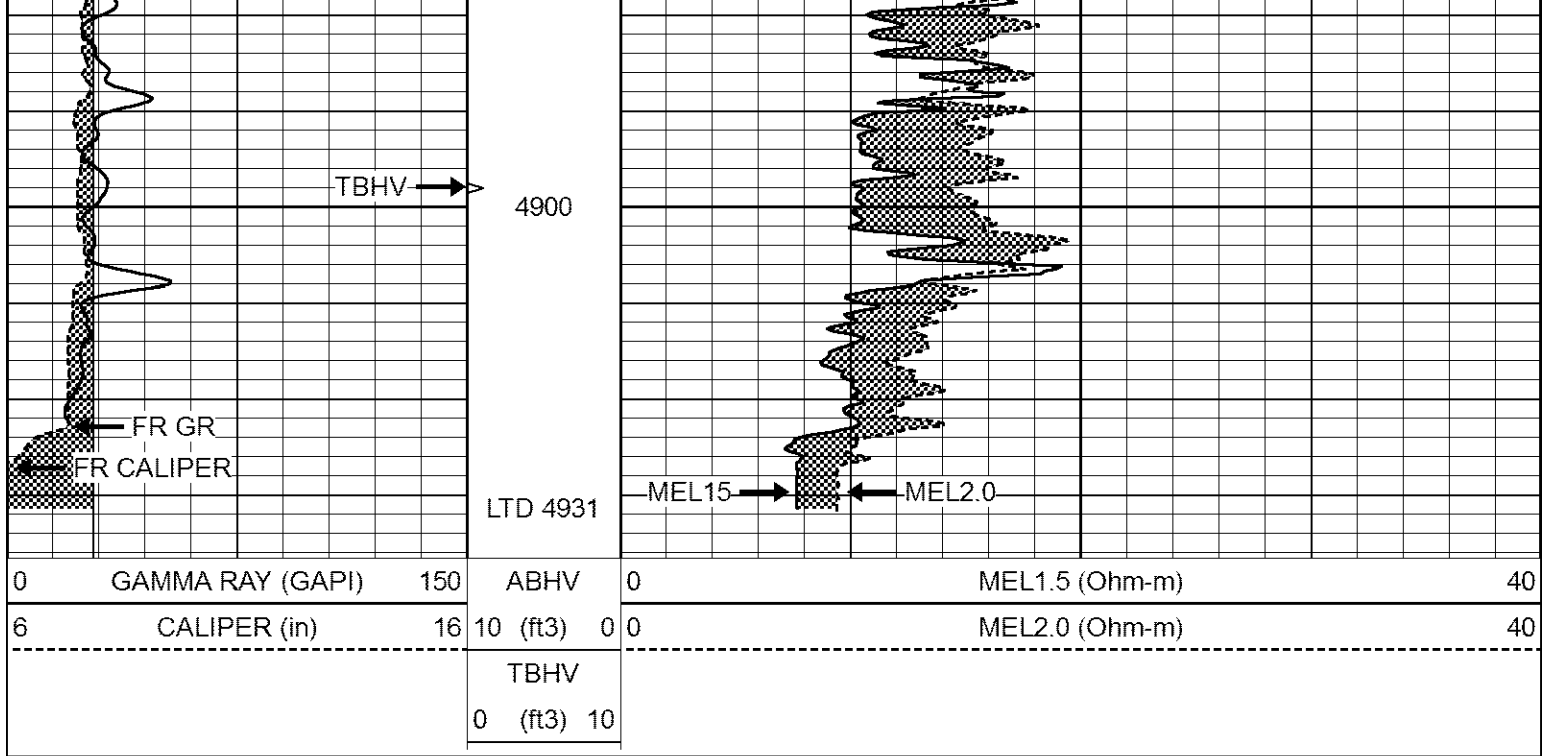








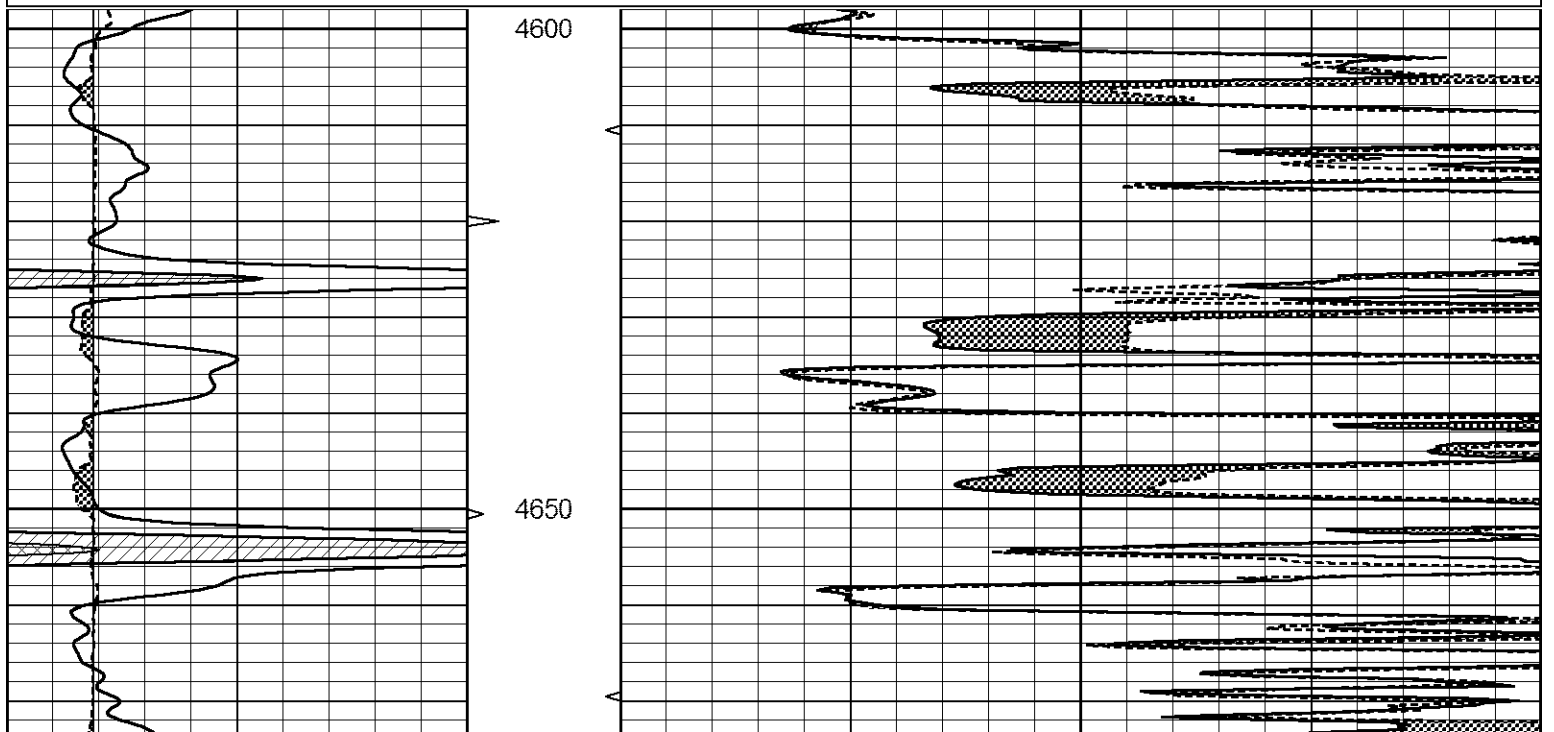


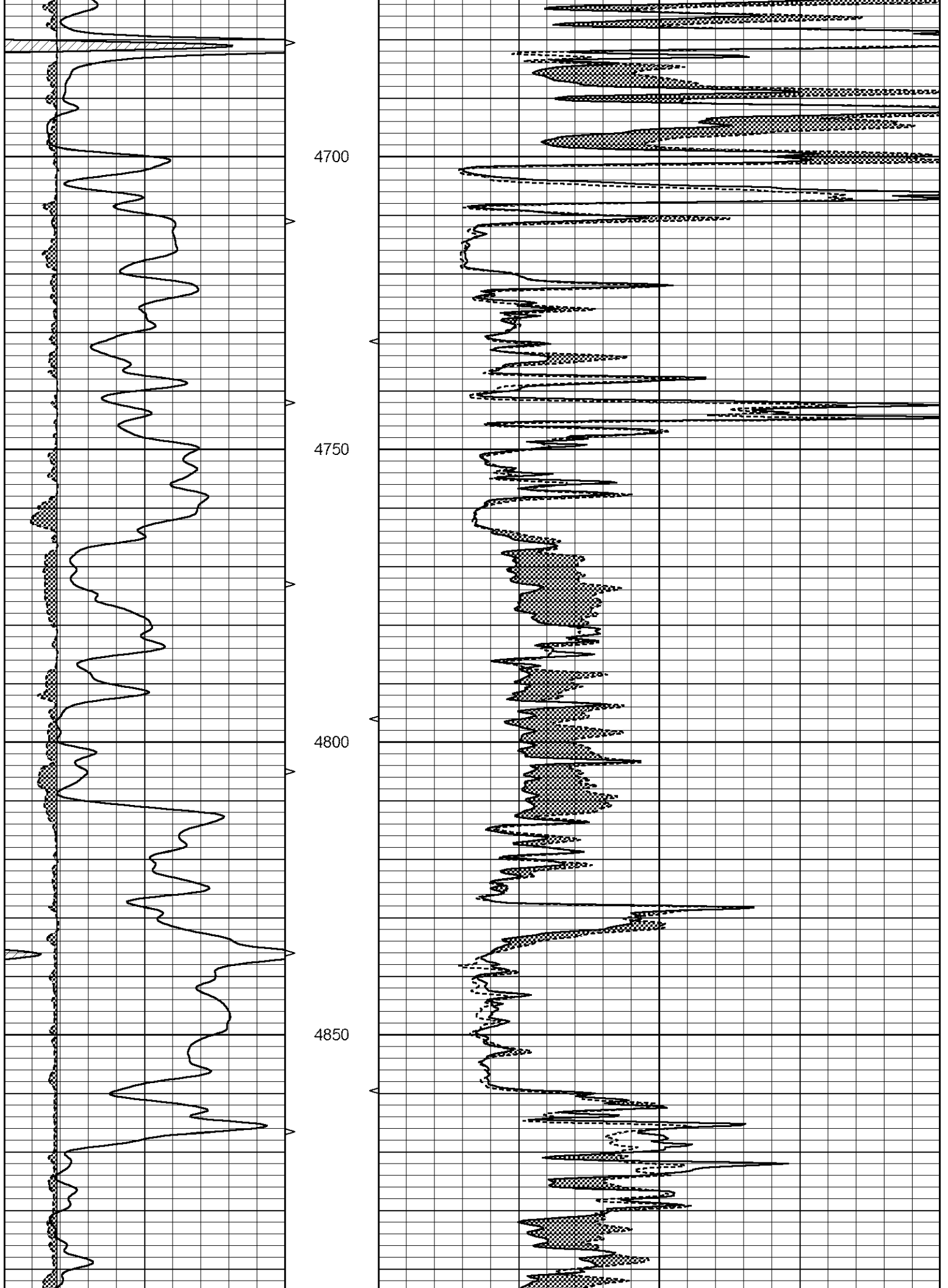


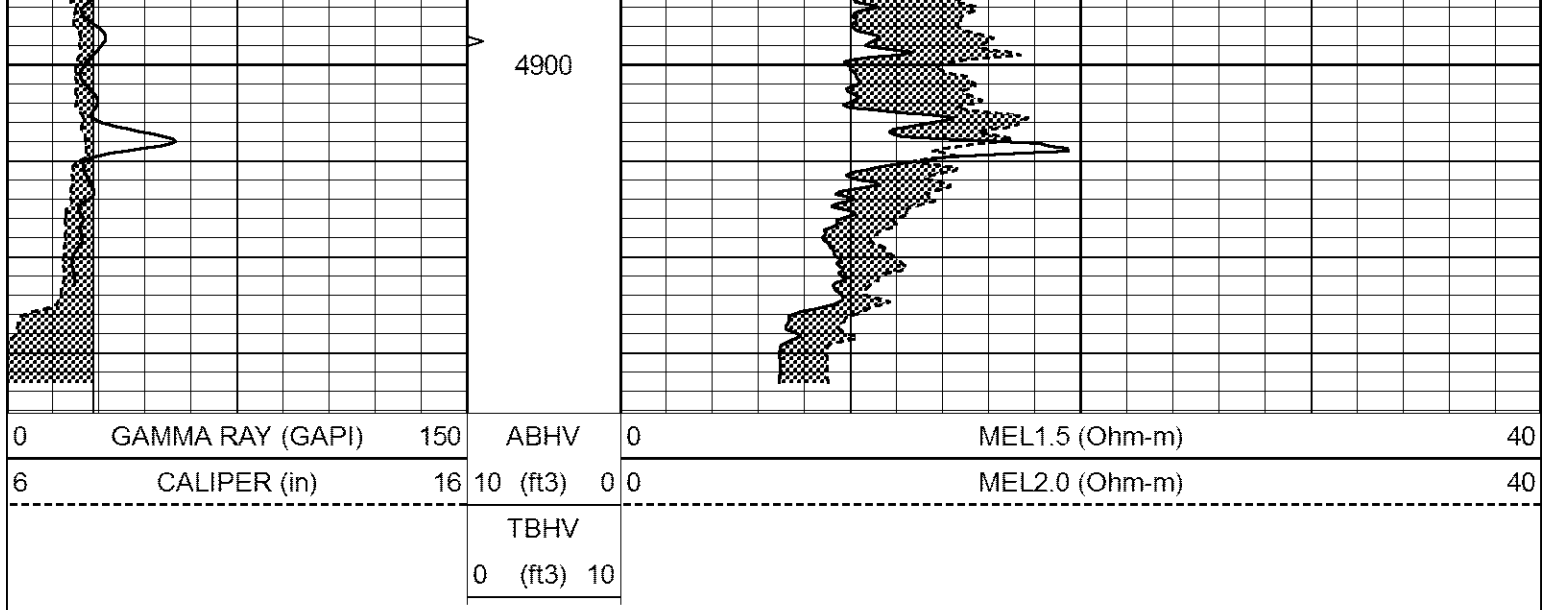
# REPEAT SECTION

Database File 6530.db  
 Dataset Pathname pass6.4  
 Presentation Format \_micro  
 Dataset Creation Thu May 19 03:38:31 2022  
 Charted by Depth in Feet scaled 1:240

0	GAMMA RAY (GAPI)	150	ABHV	0	MEL1.5 (Ohm-m)	40
6	CALIPER (in)	16	10 (ft3) 0	0	MEL2.0 (Ohm-m)	40
			TBHV			
			0 (ft3) 10			







### Calibration Report

Database File 6530.db  
 Dataset Pathname pass7.1  
 Dataset Creation Thu May 19 03:20:45 2022

### MICRO\_USR Calibration Report

Serial Number: 070910  
 Tool Model: ProbeL  
 Performed: Tue May 17 08:13:59 2022

Caliper Calibration: Gain=7.212 Offset=2.771

References	Low Cal	High Cal
Readings	8.000	14.000
	0.725	1.557

1.5" Calibration: Gain=30.000 Offset=3.200

References	Low Cal	High Cal
Readings	0.000	20.000
	0.004	1.335

2" Calibration: Gain=58.000 Offset=1.500

References	Low Cal	High Cal
Readings	0.000	20.000
	0.004	1.029

### Microlog Calibration Report

Serial-Model: 070910-ProbeL  
 Performed: (Not Performed)

	Readings			References			Results	
	Zero	Cal		Zero	Cal		m	b
Normal	0.0000	1.0000	V	0.0000	1.0000	Ohm-m	1.0000	0.0000
Inverse	0.0000	1.0000	V	0.0000	1.0000	Ohm-m	1.0000	0.0000
Caliper	0.0000	1.0000	V	0.0000	1.0000	in	1.0000	0.0000

### Gamma Ray Calibration Report

Serial Number: 070558  
 Tool Model: Probe1  
 Performed: Thu May 17 15:02:40 2022

Performed:	1.0	GAPI
Calibrator Value:	1.0	GAPI
Background Reading:	0.0	cps
Calibrator Reading:	1.0	cps
Sensitivity:	0.2200	GAPI/cps