



**COMPENSATED
DENSITY/NEUTRON
LOG**

Company DOWNING NELSON OIL COMPANY, INC.
Well KRAMERA A UNIT #1-17
Field UNNAMED
County RAWLINS State KANSAS

Location: API #: 15-153-21285-00-00
1392 FSL & 2478' FWL
SE - SE - NE - SW
SEC 17 TWP 5S RGE 36W
Permanent Datum GROUND LEVEL Elevation 3342
Log Measured From KELLY BUSHING 11' A.G.L.
Drilling Measured From KELLY BUSHING
Other Services DIL/MEL
Elevation K.B. 3353
D.F. 3351
G.L. 3342

Date	5/18/22		
Run Number	ONE		
Depth Driller	4932		
Depth Logger	4931		
Bottom Logged Interval	4907		
Top Log Interval	3600		
Casing Driller	8 5/8"@486'		
Casing Logger	486		
Bit Size	7 7/8		
Type Fluid in Hole	CHEMICAL MUD	CHLORIDES 800 PPM	
Density / Viscosity	9.2/49		
pH / Fluid Loss	10.0/8		
Source of Sample	FLOWLINE		
Rm @ Meas. Temp	.950@70F		
Rmt @ Meas. Temp	.713@70F		
Rmc @ Meas. Temp	1.14@70F		
Source of Rmf / Rmc	MEASUREMENT		
Rm @ BHT	.536@124F		
Time Circulation Stopped	2.5 HOURS		
Time Logger on Bottom	11:30 P.M.		
Maximum Recorded Temperature	122F		
Equipment Number	3802		
Location	HAYS, KANSAS		
Recorded By	COLE ROBBEN	TJ DREILING	
Witnessed By	MARC DOWNING		

<<< Fold Here >>>

All interpretations are opinions based on inferences from electrical or other measurements and we cannot and do not guarantee the accuracy or correctness of any interpretation, and we shall not, except in the case of gross or willful negligence on our part, be liable or responsible for any loss, costs, damages, or expenses incurred or sustained by anyone resulting from any interpretation made by any of our officers, agents or employees. These interpretations are also subject to our general terms and conditions set out in our current Price Schedule.

Comments

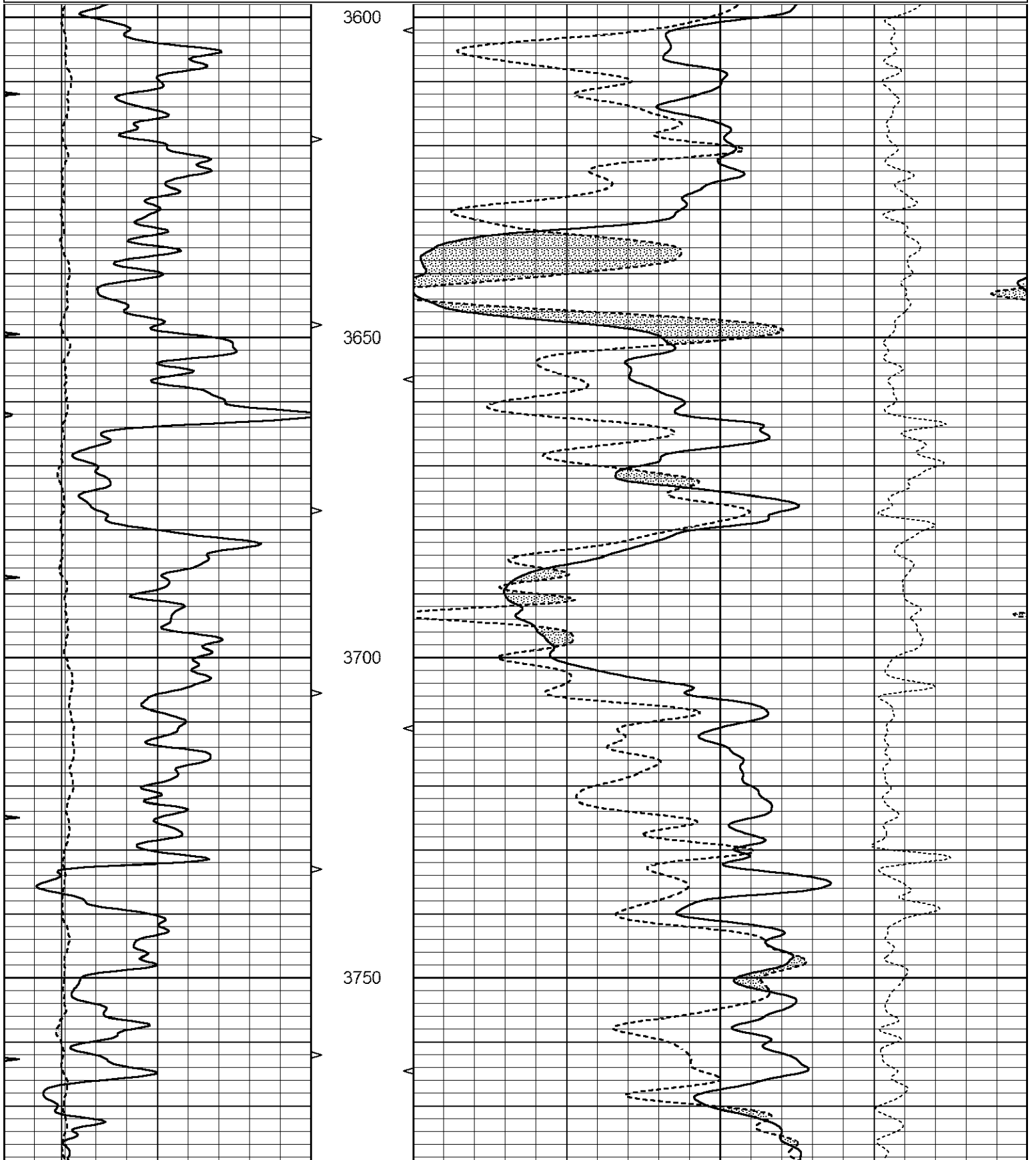
THANK YOU FOR USING ELI WIRELINE SERVICES, HAYS, KS. (785) 628-6395
DIRECTIONS
BREWSTER, KS. NORTH ON BLACKTOP TO CURVE WEST,
3 MILES NORTH TO ROAD D, 1/2 WEST, NORTH INTO

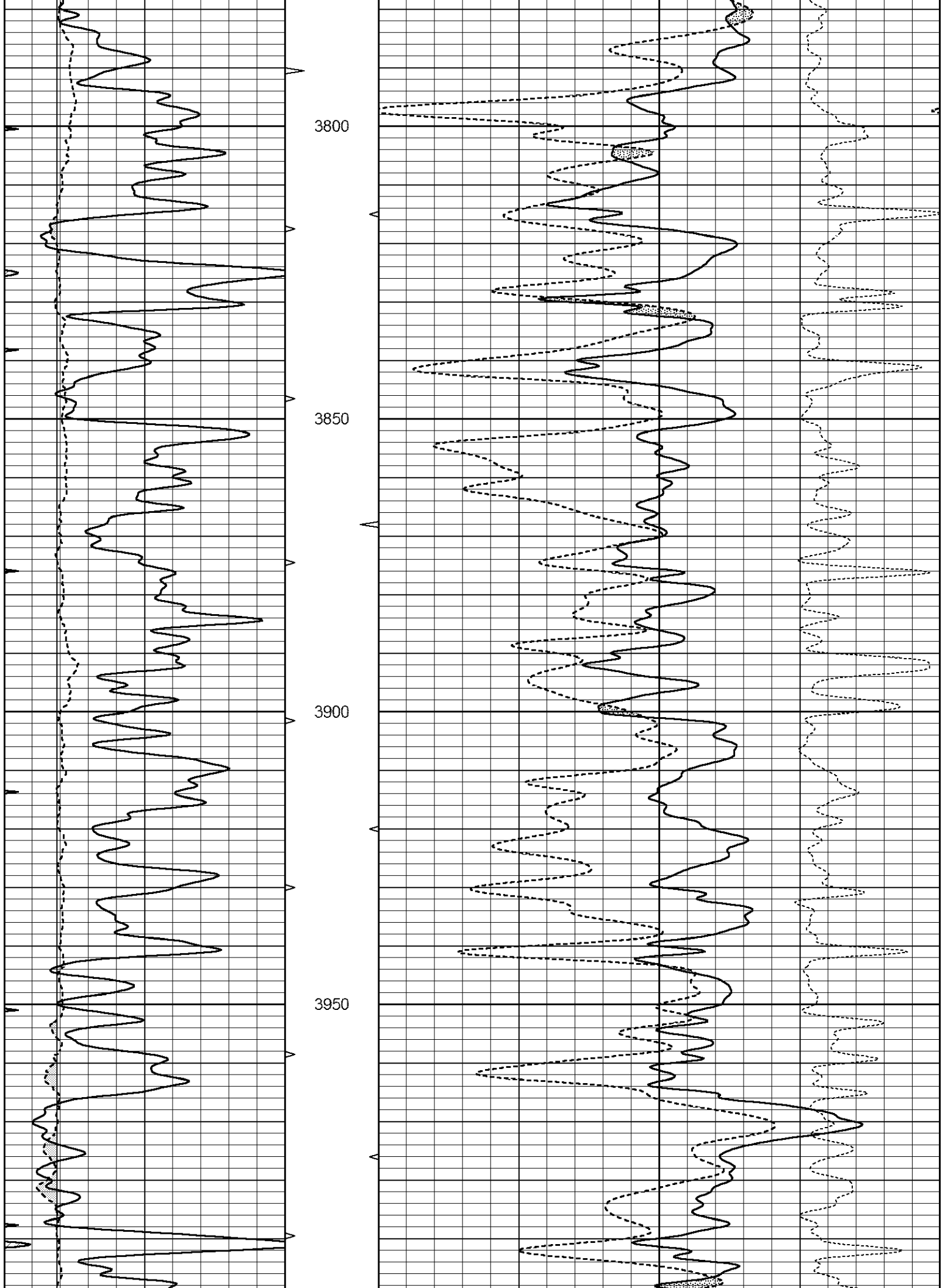


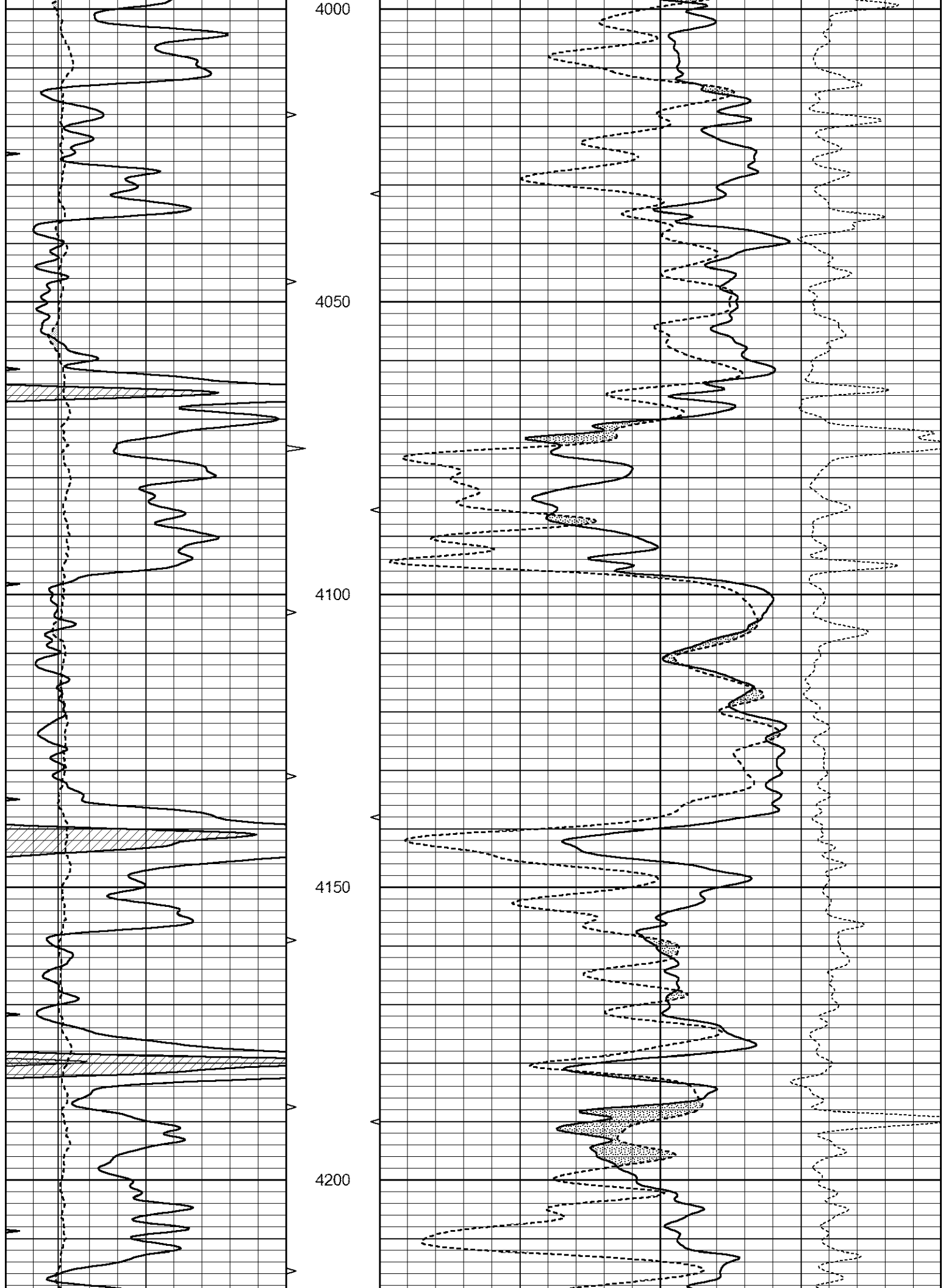
MAIN SECTION

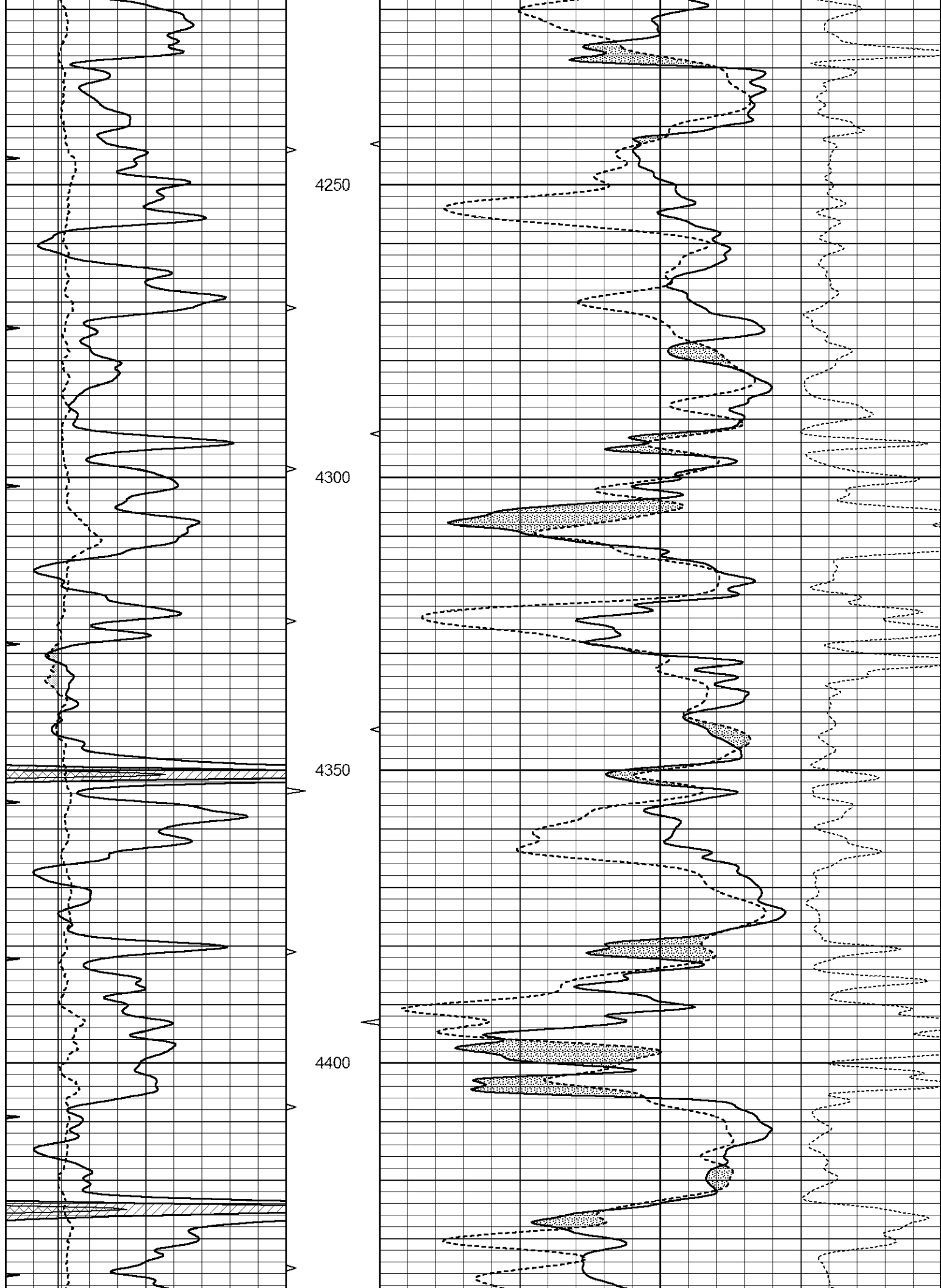
Database File 6530.db
 Dataset Pathname pass4.3M
 Presentation Format _den_neu
 Dataset Creation Thu May 19 02:36:10 2022
 Charted by Depth in Feet scaled 1:240

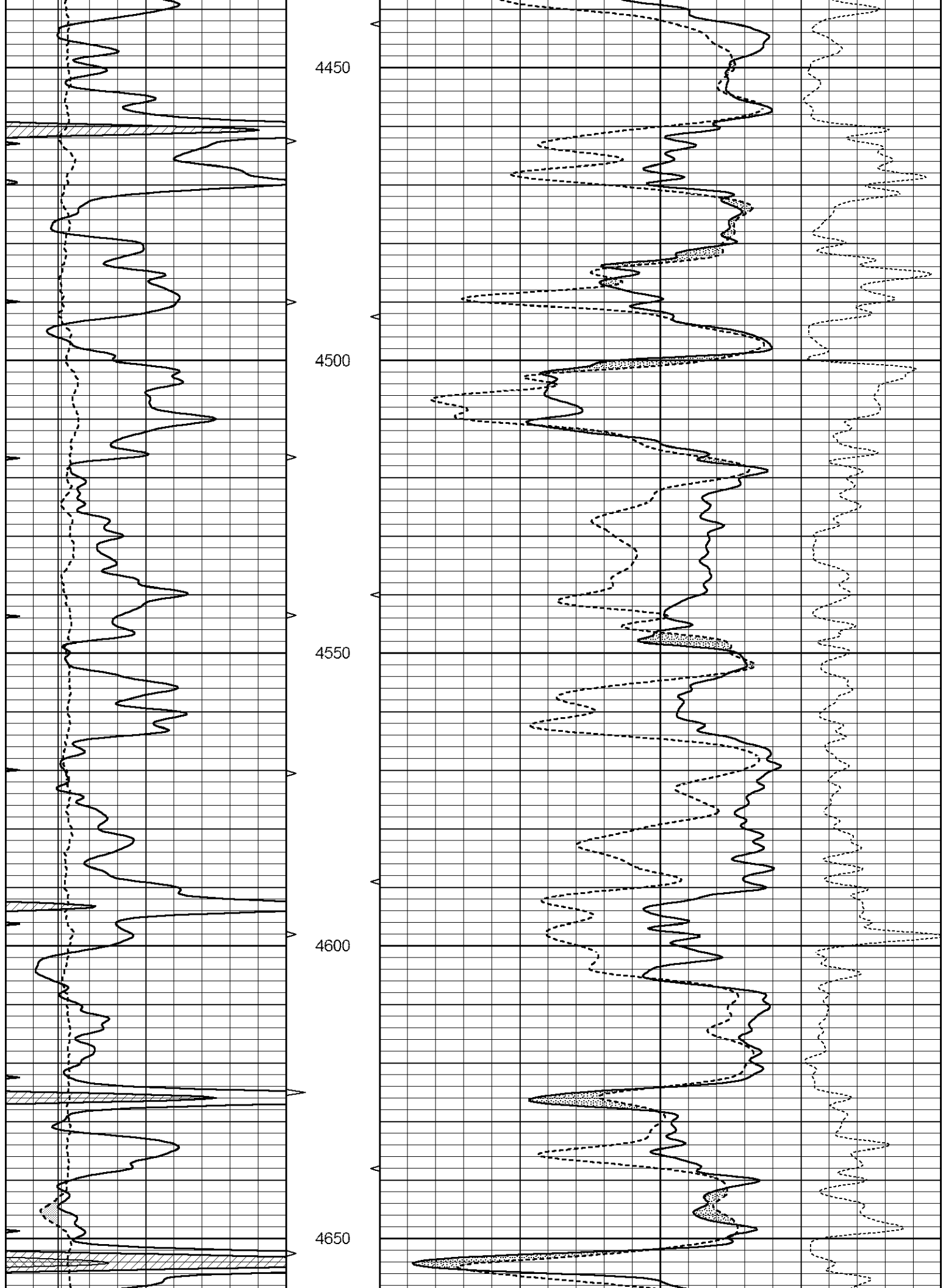
0	GAMMA RAY (GAPI)	150	AVTX	30	COMPENSATED DENSITY (pu)	-10
0	MINMK	20	10 (ft3) 0	30	COMPENSATED NEUTRON (pu)	-10
6	CALIPER (in)	16	BVTX		-0.25 CORRECTION (g/cc)	0.25
			0 (ft3) 10			

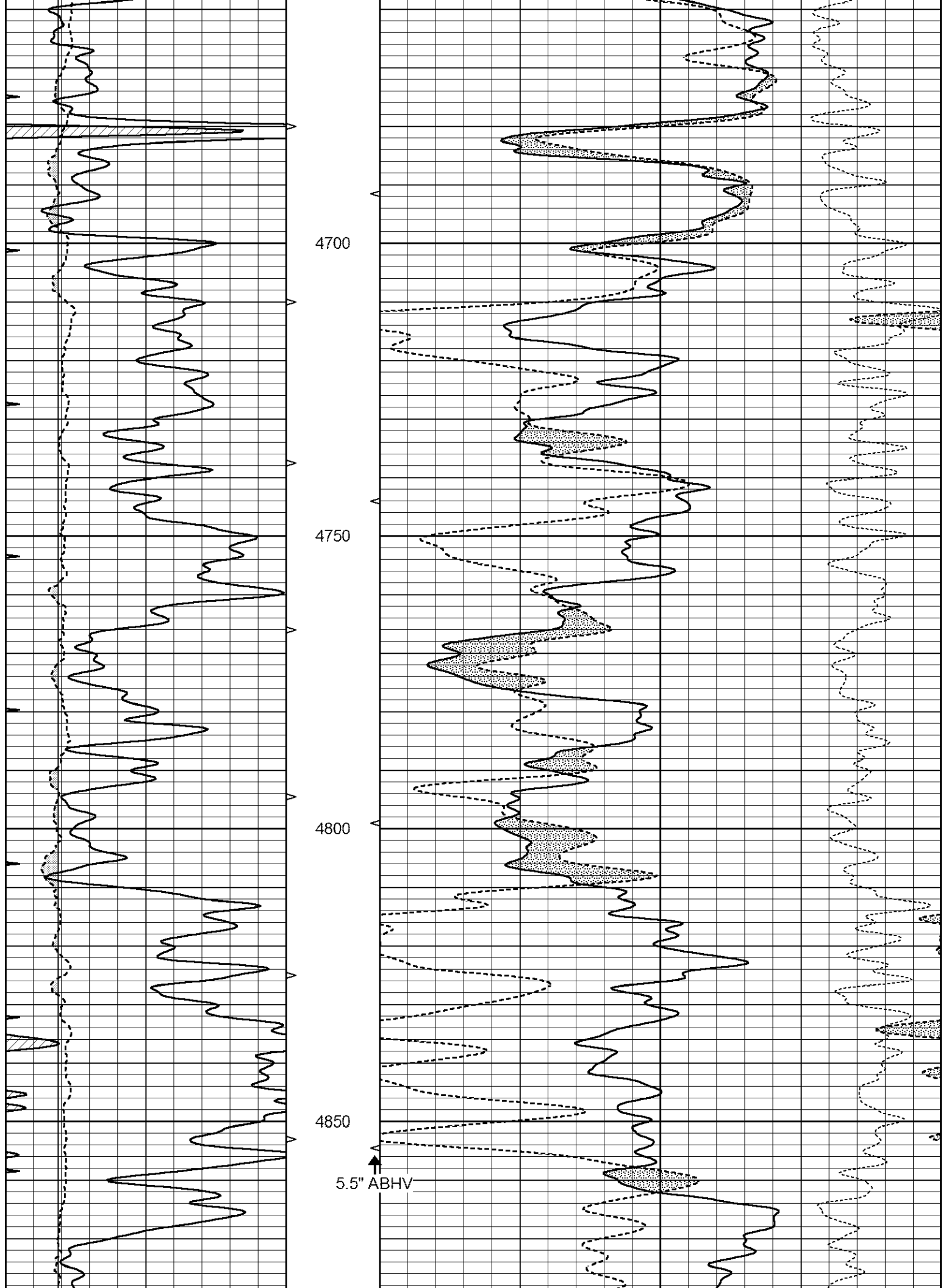


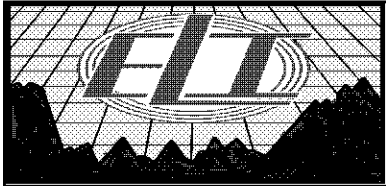
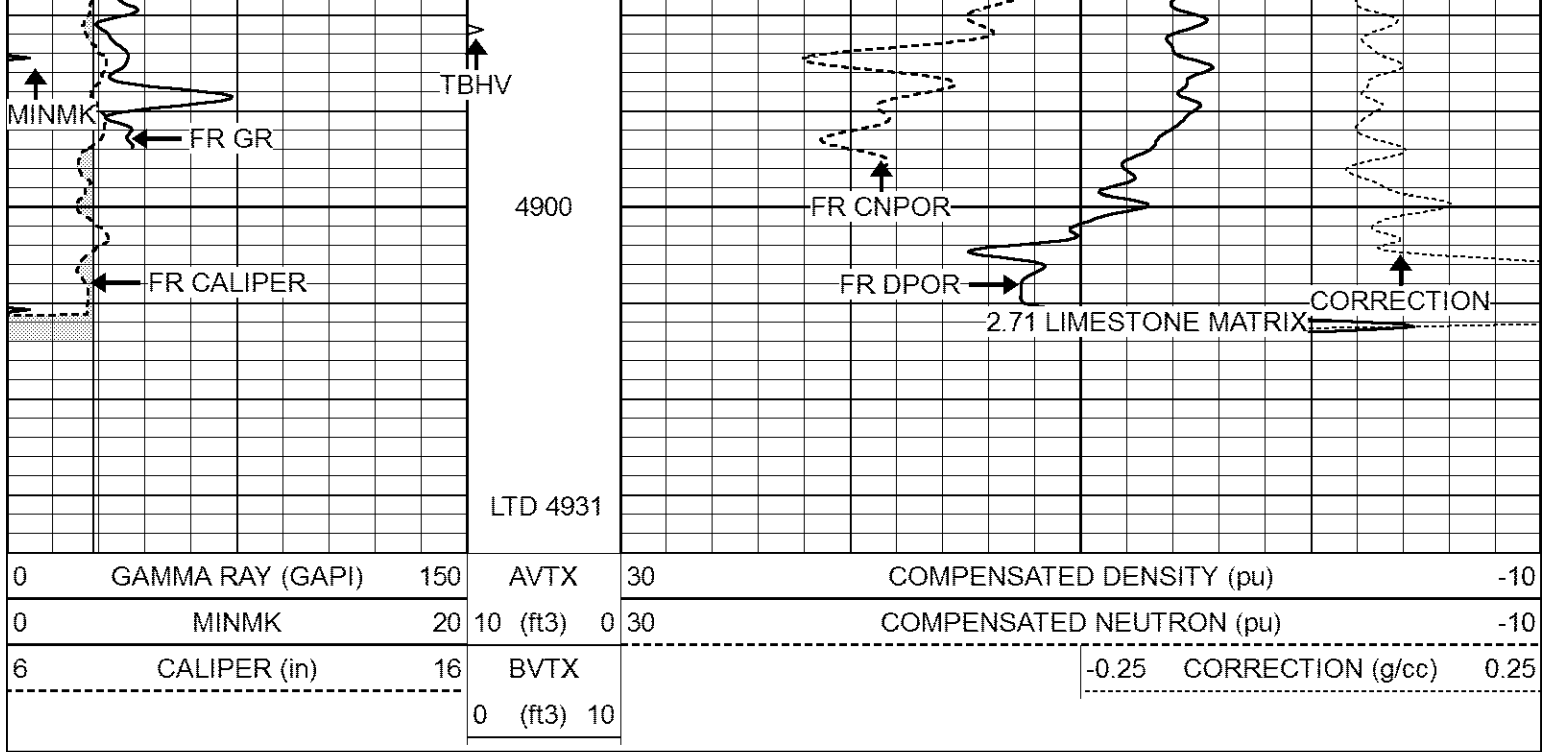








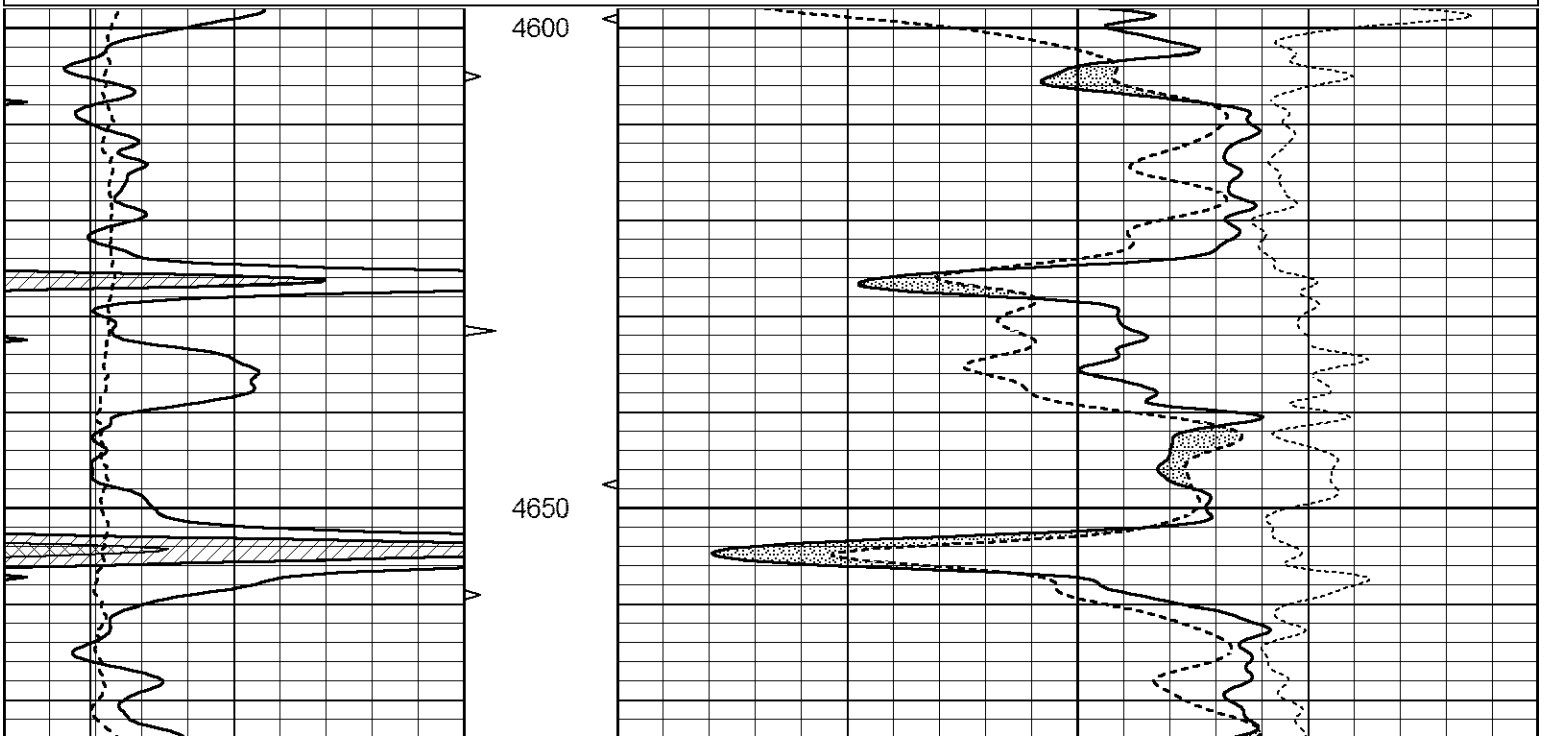


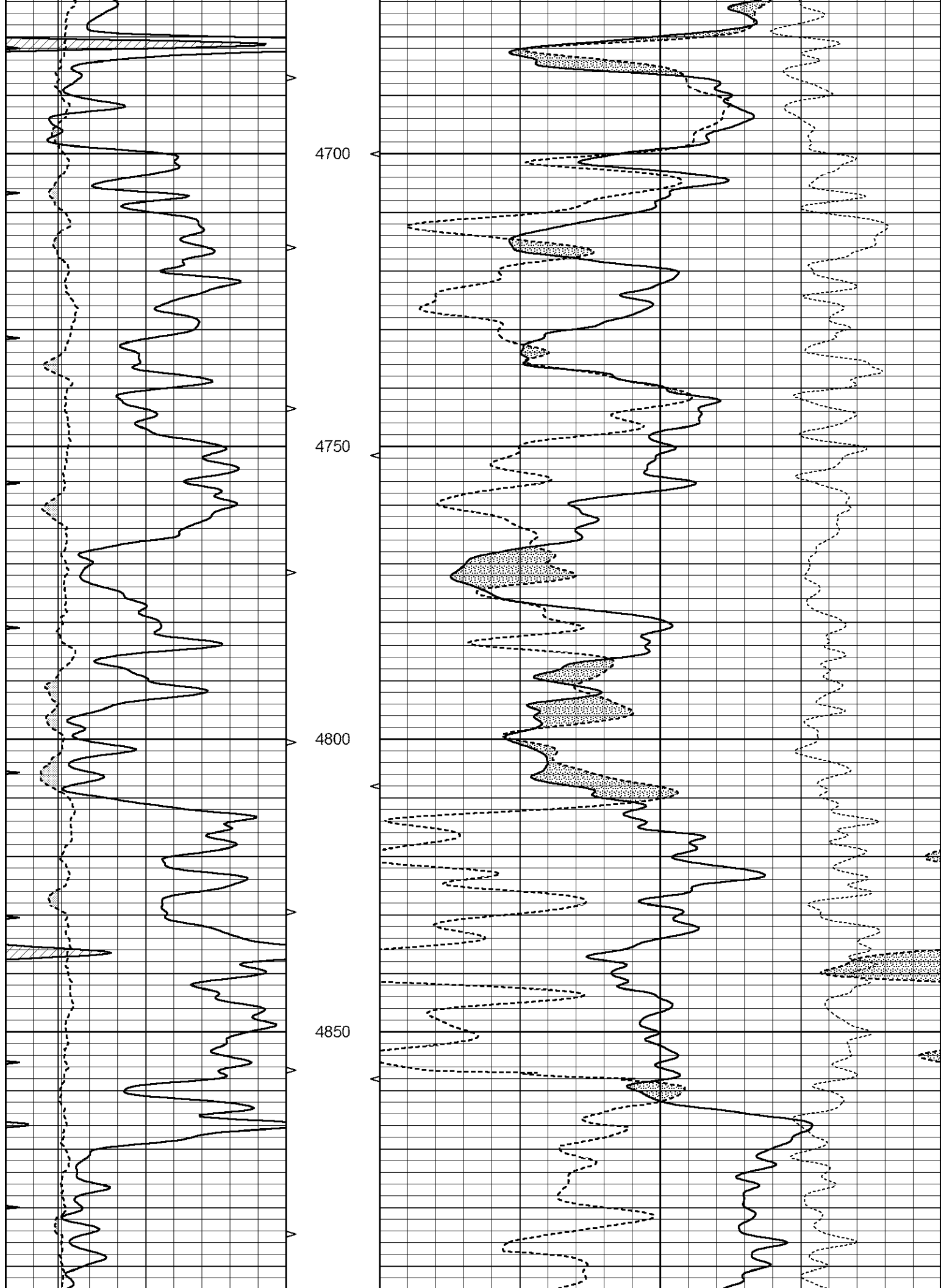


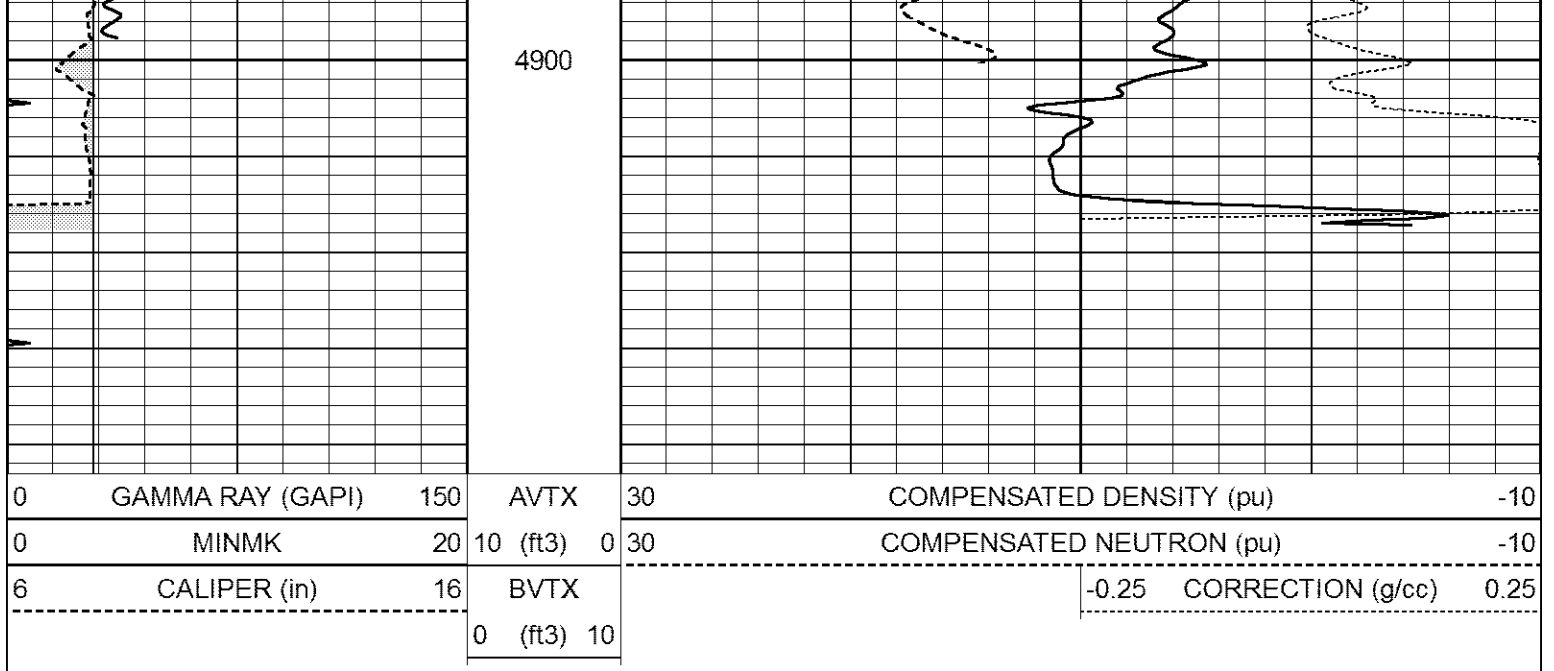
REPEAT SECTION

Database File 6530.db
 Dataset Pathname pass3.3R
 Presentation Format _den_neu
 Dataset Creation Thu May 19 01:29:29 2022
 Charted by Depth in Feet scaled 1:240

0	GAMMA RAY (GAPI)	150	AVTX	30	COMPENSATED DENSITY (pu)	-10
0	MINMK	20	10 (ft3)	0 30	COMPENSATED NEUTRON (pu)	-10
6	CALIPER (in)	16	BVTX		-0.25 CORRECTION (g/cc)	0.25
			0 (ft3)	10		







Calibration Report

Database File 6530.db
 Dataset Pathname pass4.3M
 Dataset Creation Thu May 19 02:36:10 2022

Dual Induction Calibration Report

Serial-Model: FW1410-56-Probe
 Surface Cal Performed: Tue May 17 12:24:41 2022
 Downhole Cal Performed: Tue Jul 25 12:15:37 2017
 After Survey Verification Performed: Tue Jul 25 12:15:38 2017

Surface Calibration

Loop:	Readings			References			Results	
	Air	Loop		Air	Loop		m	b
Deep	0.008	0.765	V	1.000	400.000	mmho/m	420.000	-2.000
Medium	-0.056	0.761	V	1.000	464.000	mmho/m	420.000	155.000
Internal:	Zero	Cal		Zero	Cal		m	b
Deep	0.005	0.624	V	0.000	400.000	mmho/m	645.611	-3.034
Medium	0.012	0.721	V	0.000	464.000	mmho/m	653.591	-7.532

Downhole Calibration

	Readings			References			Results	
	Zero	Cal		Zero	Cal		m'	b'
Deep	-0.647	301.329	mmho/m	-0.780	336.378	mmho/m	1.117	-0.058
Medium	38.256	411.013	mmho/m	39.046	441.706	mmho/m	1.080	-2.280
LL3		7.471	V		2500.000	Ohm-m		
		0.001	V		20.000	Ohm-m		
		-7.085	V		4000.000	mmho-m		

After Survey Verification

	Readings			Targets			Results	
	Zero	Cal		Zero	Cal		m'	b'
Deep	0.000	0.000	mmho/m	-0.647	301.329	mmho/m	1.000	0.000
Medium	0.000	0.000	mmho/m	38.256	411.013	mmho/m	1.000	0.000
LL3		0.000	Ohm-m		1500.000	Ohm-m		
		0.000	Ohm-m		20.000	Ohm-m		

0.000 0.000 20.000 0.000
 0.000 mmho-m 3745.000 mmho-m

Litho Density Calibration Report
 Serial: 005 Model: Litho_Ver3

Master Calibration Performed Fri May 13 13:54:36 2022

	Background	Magnesium	Aluminum	Aluminum+Fe	
Window 1	1363.1	46477.8	11515.9	9589.9	cps
Window 2	1239.4	36488.4	9270.1	7998.9	cps
Window 3	1044.3	20488.1	5500.7	4913.3	cps
Window 4	315.7	358.7	321.5	319.5	cps
Long Space	0.0	35249.0	8030.7	6759.4	cps
Short Space	1.4	9675.7	6523.4	5391.9	cps
Rho		1.7100	2.5900	0.0000	g/cc
Pe		2.0000	2.7500	5.7900	

Rib Angle : 45.1 Rib Slope : 1.003 Density/Spine Ratio : 0.575
 Spine Angle : 75.1 Spine Slope : 3.752 Spine Intercept : -24.0

Before Survey Verification Performed Wed Dec 31 18:00:00 1969

Window 1	0.0	0.0	0.0	0.0	cps
Window 2	0.0	0.0	0.0	0.0	cps
Window 3	0.0	0.0	0.0	0.0	cps
Window 4	0.0	0.0	0.0	0.0	cps
Long Space	0.0	0.0	0.0	0.0	cps
Short Space	0.0	0.0	0.0	0.0	cps
Measured Rho		0.0000	0.0000	0.0000	g/cc
Measured Correction		0.0000	0.0000	0.0000	g/cc
Measured Pe			0.0000	0.0000	

After Survey Verification Performed Wed Dec 31 18:00:00 1969

Window 1	0.0	0.0	0.0	0.0	cps
Window 2	0.0	0.0	0.0	0.0	cps
Window 3	0.0	0.0	0.0	0.0	cps
Window 4	0.0	0.0	0.0	0.0	cps
Long Space	0.0	0.0	0.0	0.0	cps
Short Space	0.0	0.0	0.0	0.0	cps
Measured Rho		0.0000	0.0000	0.0000	g/cc
Measured Correction		0.0000	0.0000	0.0000	g/cc
Measured Pe			0.0000	0.0000	

Compensated Neutron Calibration Report

Serial Number: 080621PMC
 Tool Model: NABORS

PRE-SURVEY VERIFICATION

Detector	Readings	Measured	Target
Short Space	cps		
Long Space	cps	pu	pu

POST-SURVEY VERIFICATION

Detector	Readings	Measured	Target
----------	----------	----------	--------

Short Space
Long Space

cps
cps

pu

pu

Gamma Ray Calibration Report

Serial Number:	7	
Tool Model:	Probe1	
Performed:	Tue May 17 12:24:57 2022	
Calibrator Value:	1.0	GAPI
Background Reading:	0.0	cps
Calibrator Reading:	1.0	cps
Sensitivity:	0.5000	GAPI/cps