



**MICRO
LOG**

Company DOWNING-NELSON OIL COMPANY, INC.
Well CHARLENE B #1-17
Field UNNAMED
County RAWLINS
State KANSAS

Company DOWNING-NELSON OIL COMPANY, INC.
Well CHARLENE B #1-17
Field UNNAMED
County RAWLINS State KANSAS

Location: API #: 15-153-21286-0000
2212 FSL & 2636' FWL
SE/NE/NE/SW

Permanent Datum GROUND LEVEL Elevation 3332
Log Measured From KELLY BUSHING 11' A.G.L.
Drilling Measured From KELLY BUSHING

SEC 17 TWP 5S RGE 36W

Other Services
CNL/CDL
DIL

Elevation
K.B. 3343
D.F. 3341
G.L. 3332

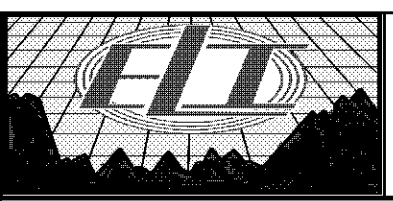
Date	4/19/22		
Run Number	TWO		
Depth Driller	4910		
Depth Logger	4912		
Bottom Logged Interval	4910		
Top Log Interval	3550		
Casing Driller	8 5/8" @ 440		
Casing Logger	440		
Bit Size	7 7/8		
Type Fluid in Hole	CHEMICAL MUD	CHLORIDES 1000 PPM	
Density / Viscosity	9.3/46		
pH / Fluid Loss	10.5/7.8		
Source of Sample	FLOWLINE		
Rm @ Meas. Temp	2@60F		
Rmt @ Meas. Temp	1.5@60F		
Rmc @ Meas. Temp	2.4@60F		
Source of Rmf / Rmc	MEASUREMENT		
Rm @ BHT	.97@124F		
Time Circulation Stopped	2 HOURS		
Time Logger on Bottom	////		
Maximum Recorded Temperature	124F		
Equipment Number	3802		
Location	HAYS, KANSAS		
Recorded By	TJ DREILING		
Witnessed By	MARC DOWNING		

<<< Fold Here >>>

All interpretations are opinions based on inferences from electrical or other measurements and we cannot and do not guarantee the accuracy or correctness of any interpretation, and we shall not, except in the case of gross or willful negligence on our part, be liable or responsible for any loss, costs, damages, or expenses incurred or sustained by anyone resulting from any interpretation made by any of our officers, agents or employees. These interpretations are also subject to our general terms and conditions set out in our current Price Schedule.

Comments

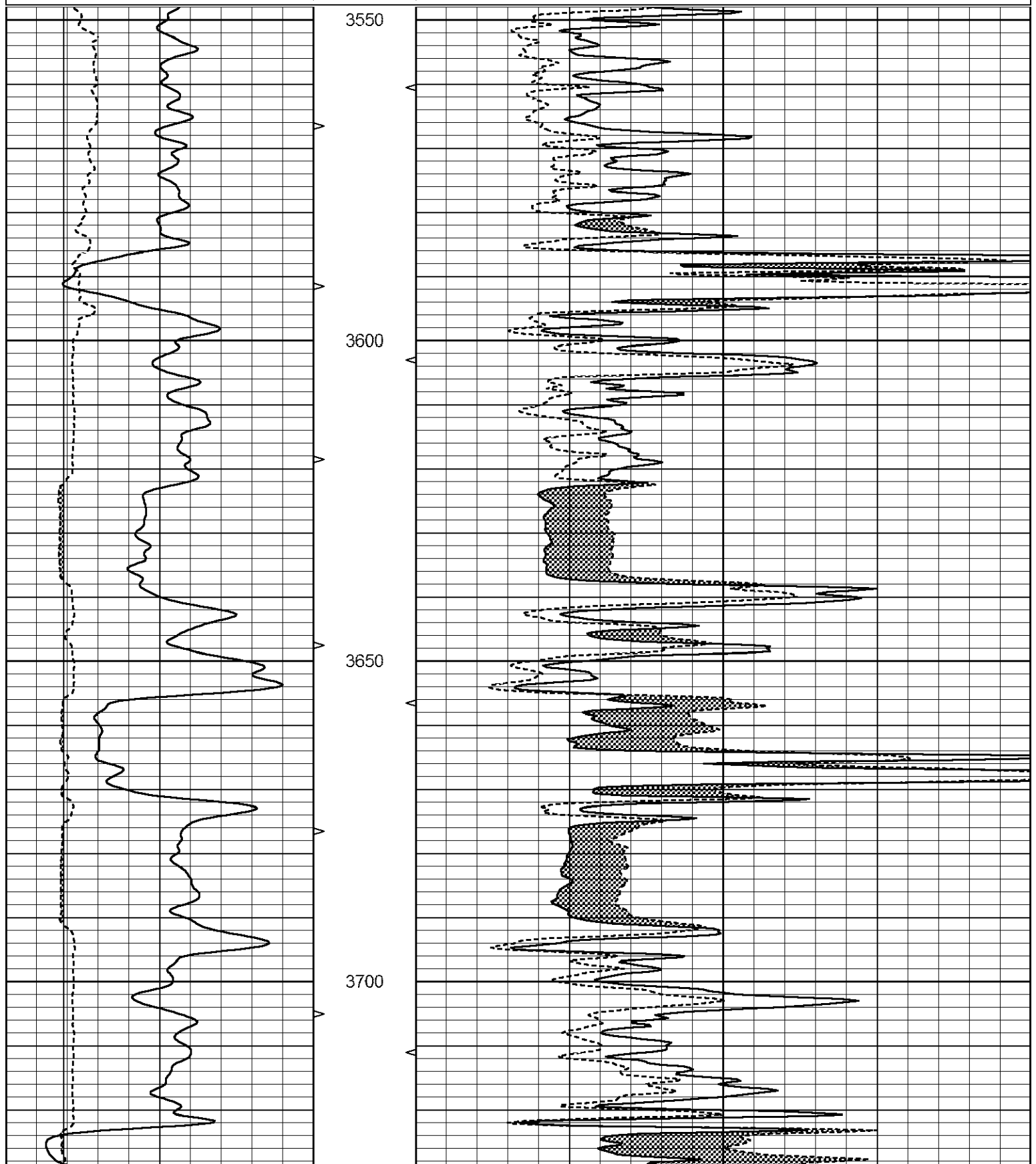
THANK YOU FOR USING ELI WIRELINE SERVICES, HAYS, KS. (785) 628-6395
DIRECTIONS
-BREWSTER KANSAS, NORTH ON BLACKTOP TO CURVE WEST,
-3 MILES NORTH TO RD D, -1/2 WEST -NORTH INTO

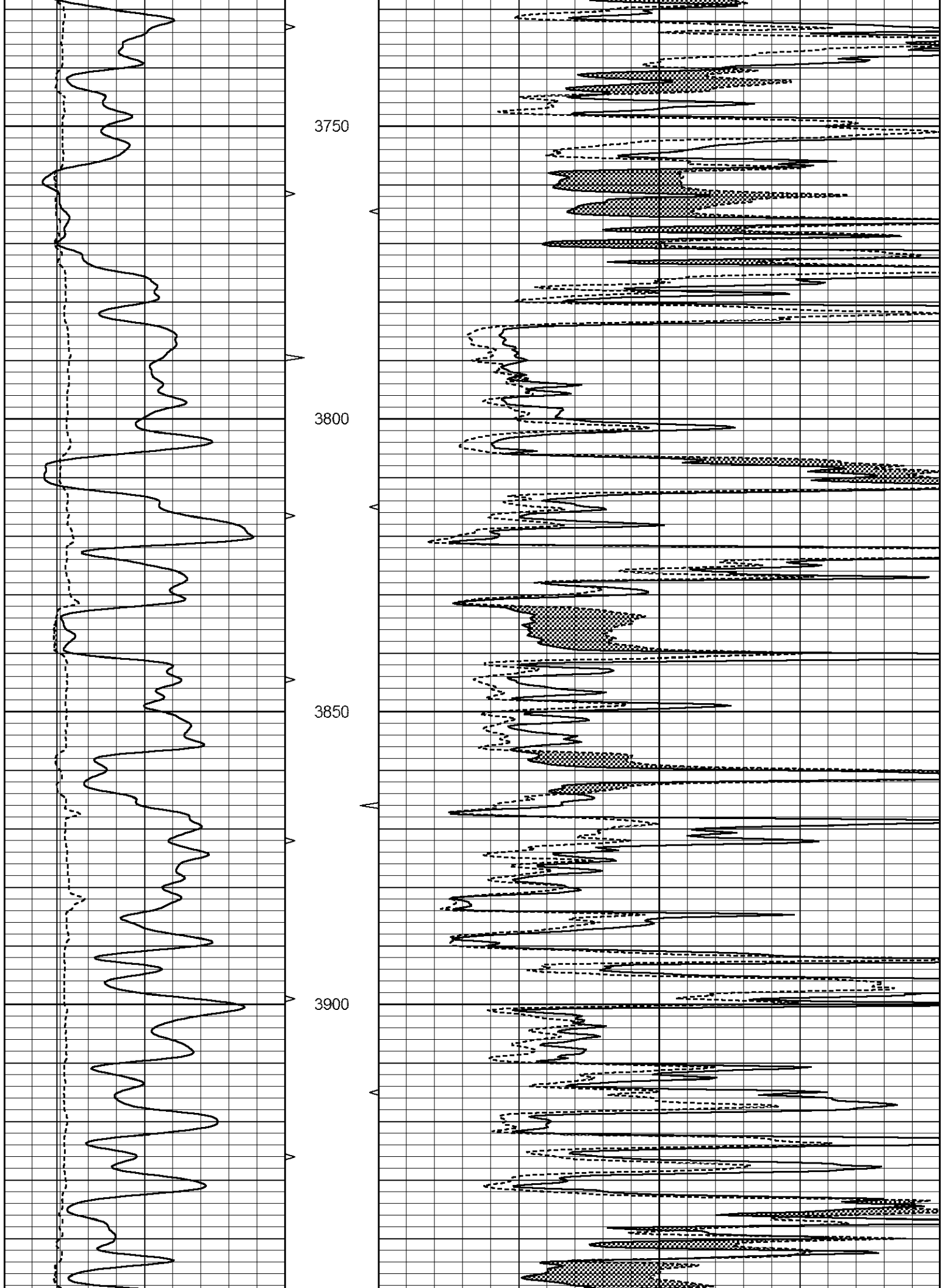


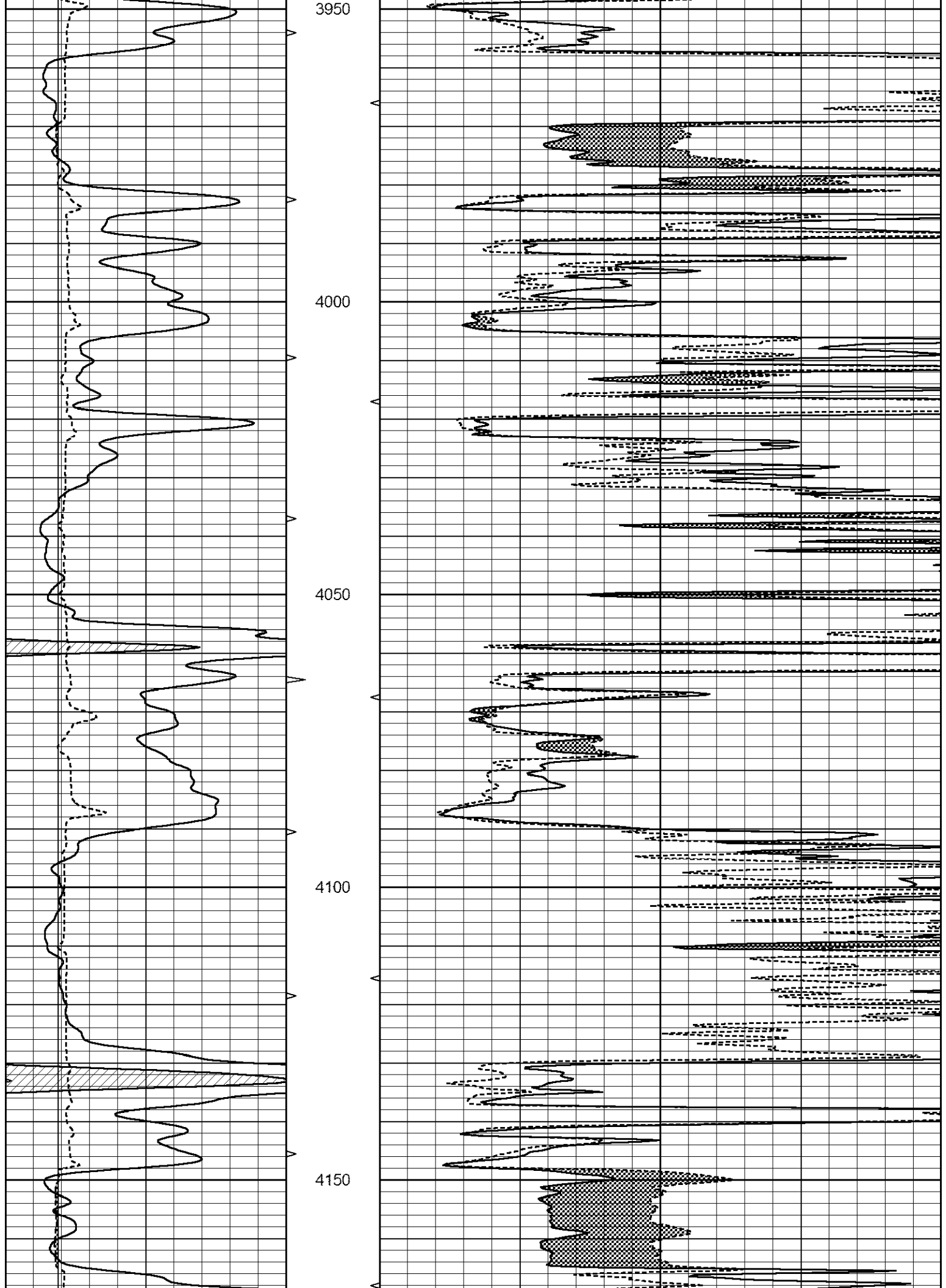
MAIN SECTION

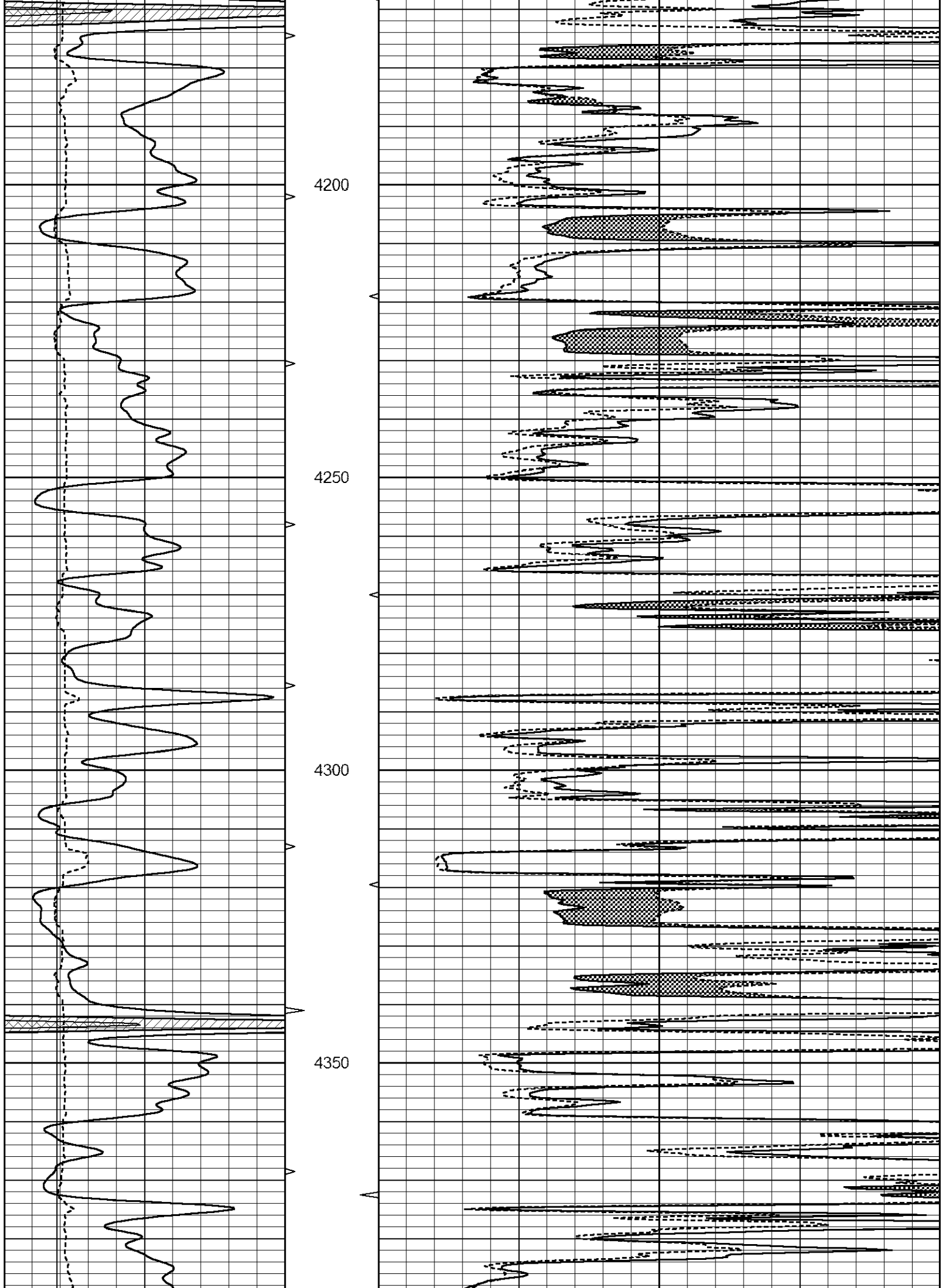
Database File 6388ddn.db
 Dataset Pathname pass9.1
 Presentation Format _micro
 Dataset Creation Tue Apr 19 16:02:34 2022
 Charted by Depth in Feet scaled 1:240

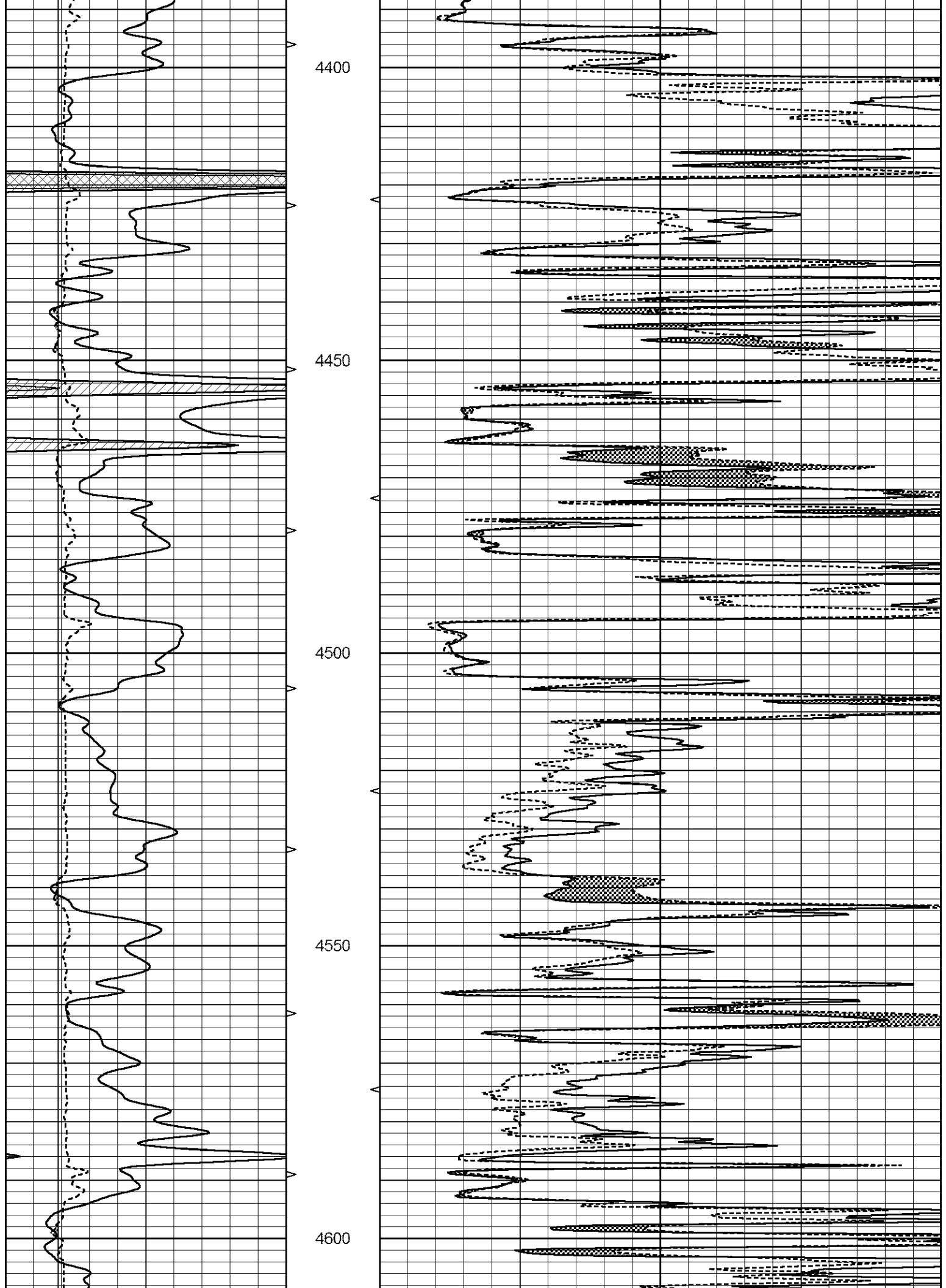
0	GAMMA RAY (GAPI)	150	ABHV	0	MEL1.5 (Ohm-m)	40
6	CALIPER (in)	16	10 (ft3)	0 0	MEL2.0 (Ohm-m)	40
			TBHV			
			0 (ft3)	10		

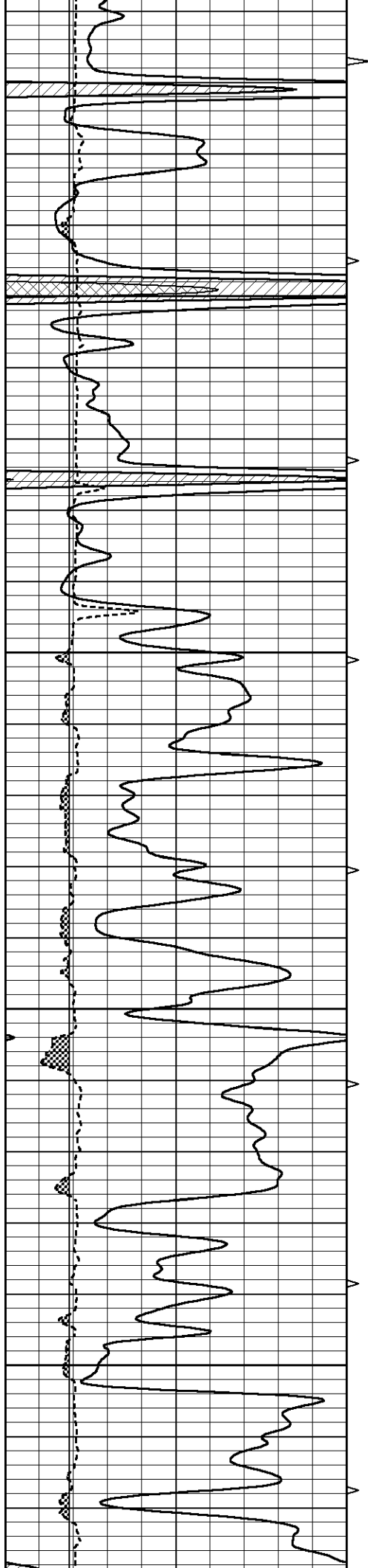










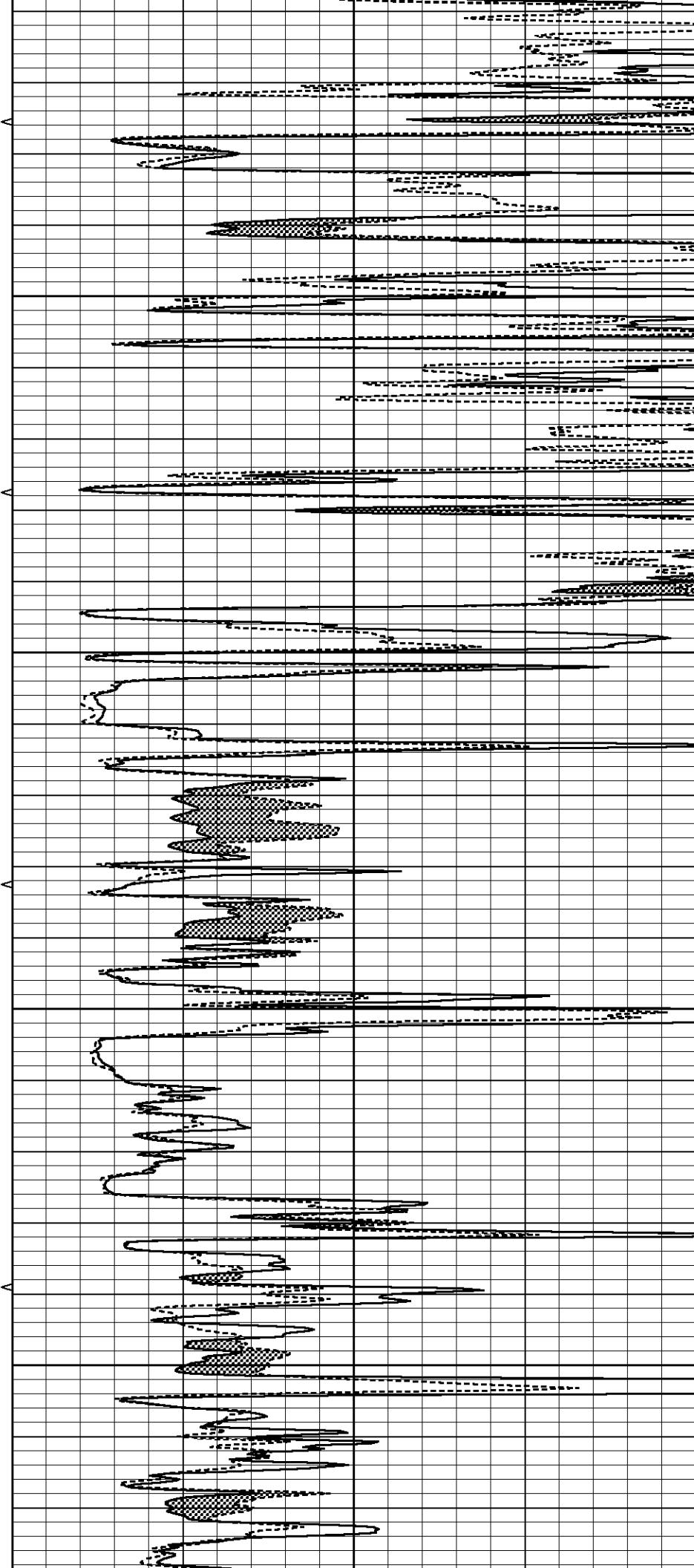


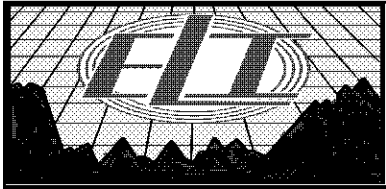
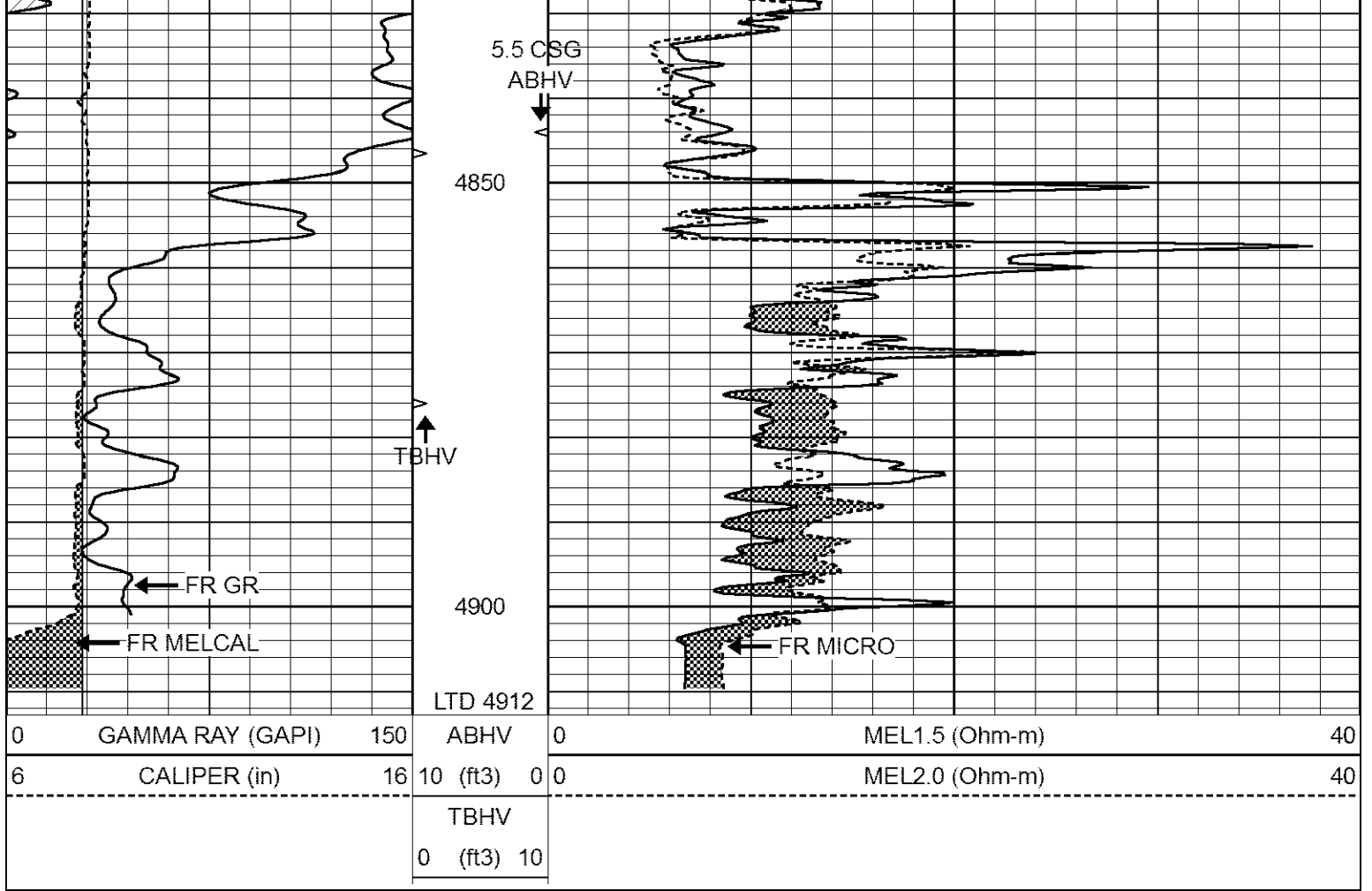
4650

4700

4750

4800

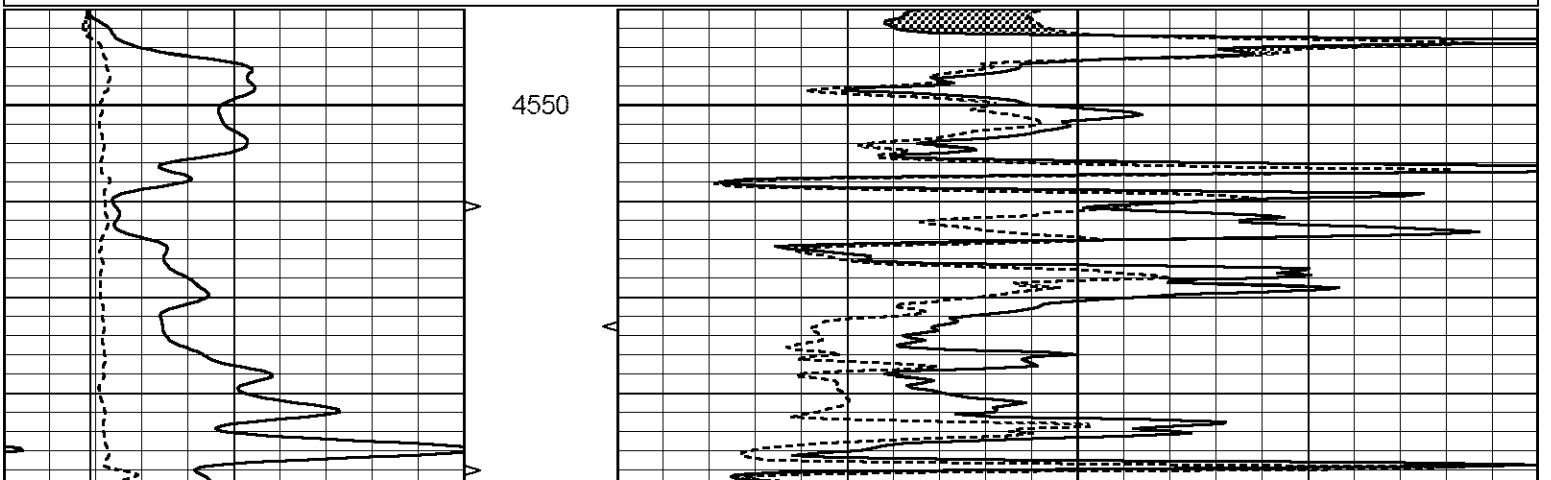


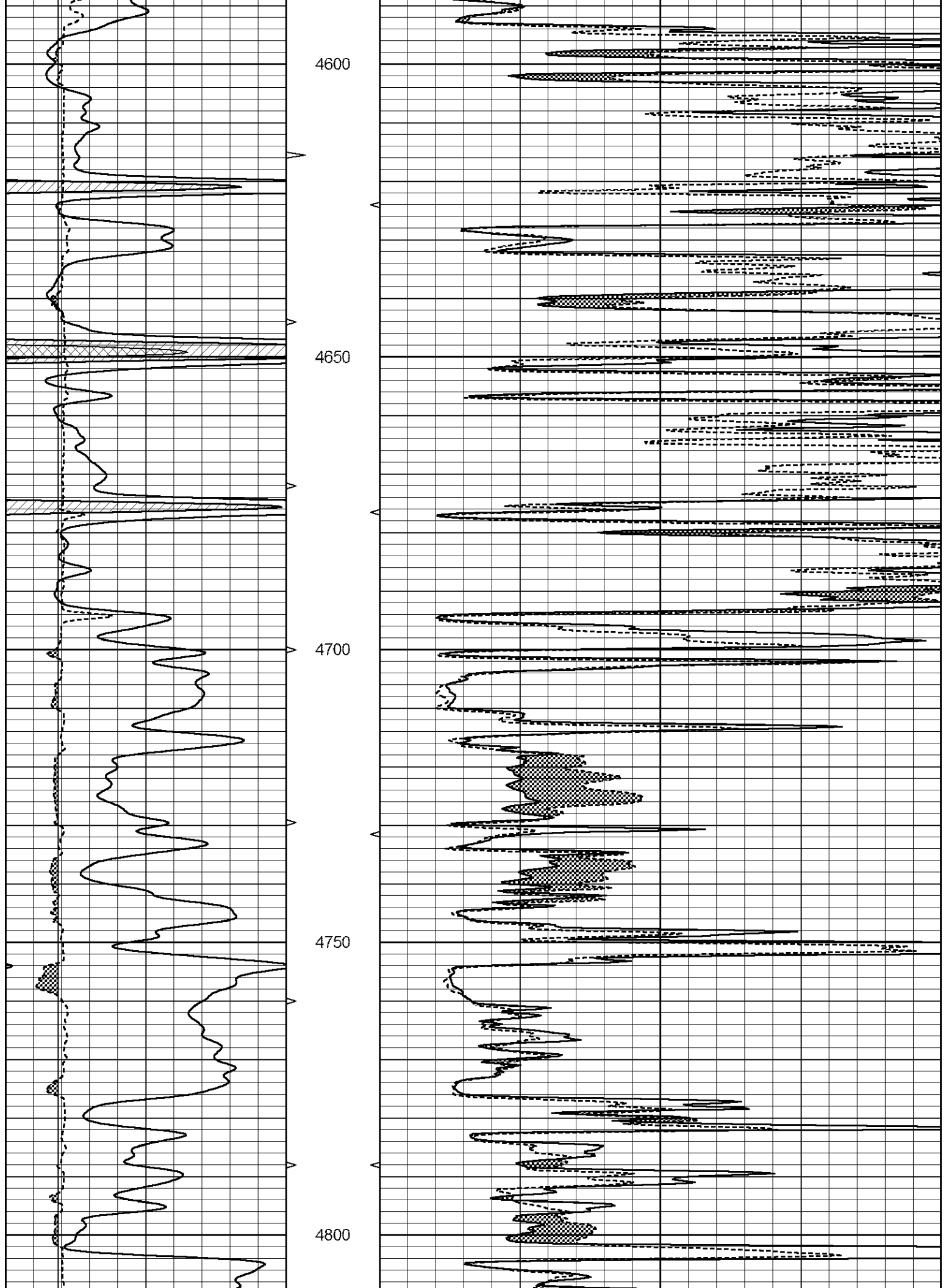


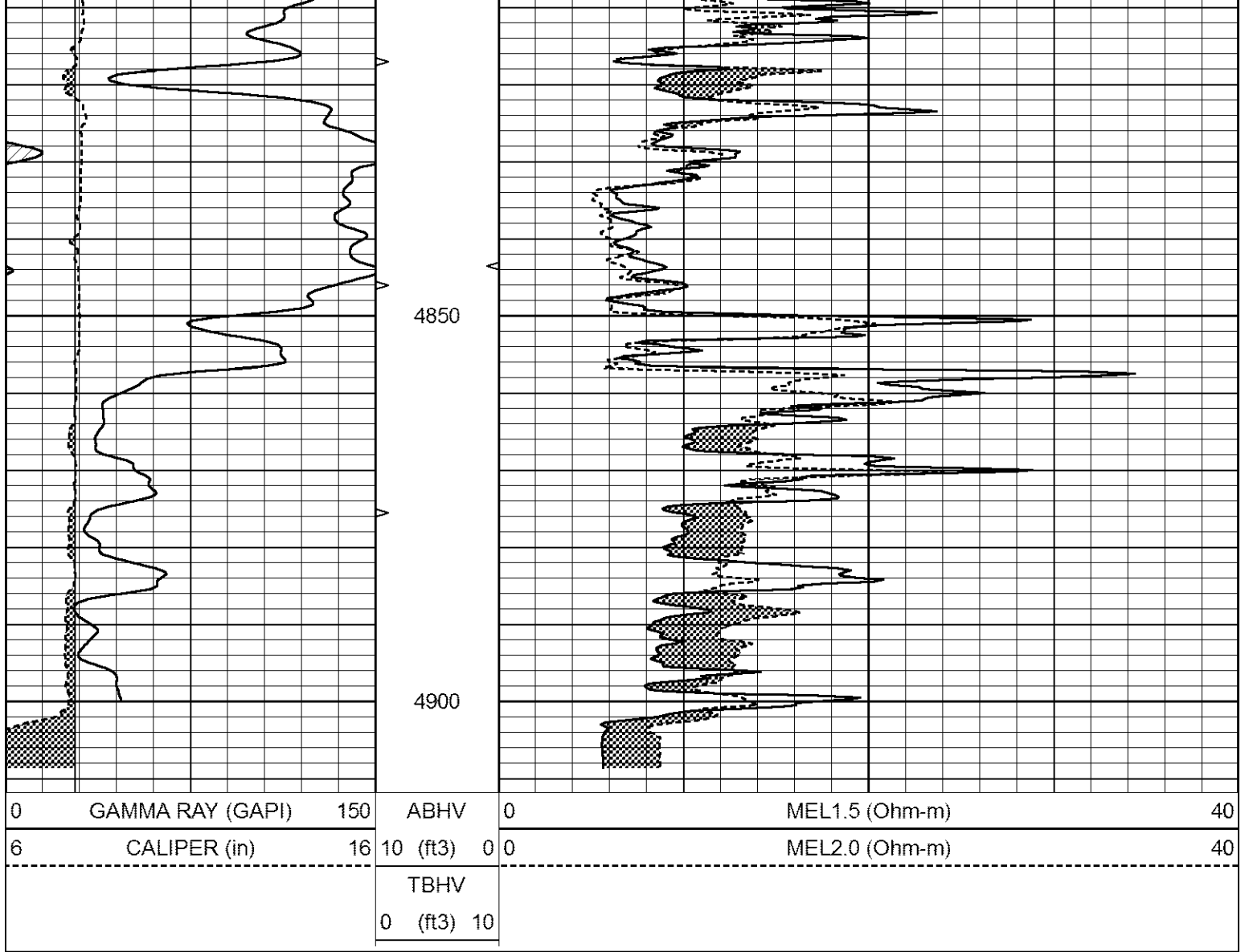
REPEAT SECTION

Database File 6388ddn.db
 Dataset Pathname pass8.1
 Presentation Format _micro
 Dataset Creation Tue Apr 19 15:36:32 2022
 Charted by Depth in Feet scaled 1:240

0	GAMMA RAY (GAPI)	150	ABHV	0	MEL1.5 (Ohm-m)	40
6	CALIPER (in)	16	10 (ft3)	0 0	MEL2.0 (Ohm-m)	40
			TBHV			
			0 (ft3)	10		







Calibration Report

Database File 6388ddn.db
 Dataset Pathname pass9.1
 Dataset Creation Tue Apr 19 16:02:34 2022

MICRO_USR Calibration Report

Serial Number:	070910	
Tool Model:	Probel	
Performed:	Sun Jan 23 09:07:22 2022	
Caliper Calibration:	Gain=7.192	Offset=3.002
References	Low Cal 8.000	High Cal 14.000
Readings	0.723	1.557
1.5" Calibration:	Gain=35.000	Offset=1.000
References	Low Cal 0.000	High Cal 20.000
Readings	0.004	1.335
2" Calibration:	Gain=65.000	Offset=-1.000
References	Low Cal 0.000	High Cal 20.000
Readings	0.004	1.029

Microlog Calibration Report

Serial-Model: 070910-ProbeL
 Performed: (Not Performed)

	Readings			References			Results	
	Zero	Cal		Zero	Cal		m	b
Normal	0.0000	1.0000	V	0.0000	1.0000	Ohm-m	1.0000	0.0000
Inverse	0.0000	1.0000	V	0.0000	1.0000	Ohm-m	1.0000	0.0000
Caliper	0.0000	1.0000	V	0.0000	1.0000	in	1.0000	0.0000

Gamma Ray Calibration Report

Serial Number: 070558
 Tool Model: Probe1
 Performed: Fri Oct 30 21:32:56 2020

Calibrator Value: 1.0 GAPI

Background Reading: 0.0 cps
 Calibrator Reading: 1.0 cps

Sensitivity: 0.2700 GAPI/cps