



MICRO
LOG

Company TRIPLE CROWN OPERATING, LLC.
Well COX #3-35
Field COUNTY LINE
County NESS
State KS

Company TRIPLE CROWN OPERATING, LLC.
Well COX #3-35
Field COUNTY LINE
County NESS State KS

Location: API #: 15 135 26166
740' FSL & 1758' FWL
SEC 35 TWP 20S RGE 22W
Permanent Datum Ground Level Elevation 2164
Log Measured From KB 7' AGL
Drilling Measured From KB
Other Services
CDNL
DIL
Elevation
K.B. 2171
D.F. 2169
G.L. 2164

Date	4/25/22
Run Number	TWO
Depth Driller	4328
Depth Logger	4324
Bottom Logged Interval	4322
Top Log Interval	3500
Casing Driller	8 5/8" @ 1376
Casing Logger	1376
Bit Size	7 7/8"
Type Fluid in Hole	Chemical
Density / Viscosity	9.3/5710
pH / Fluid Loss	11.0/8.0
Source of Sample	Pit
Rm @ Meas. Temp	.9@70degf
Rmf @ Meas. Temp	.68@70degf
Rmc @ Meas. Temp	1.08@70degf
Source of Rmf / Rmc	Calculated
Rm @ BHT	.54@115degf
Time Circulation Stopped	6:00 A.M.
Time Logger on Bottom	11:01 AM
Maximum Recorded Temperature	115degf
Equipment Number	T605
Location	Hays, KS
Recorded By	GUS PFANENSTIEL
Witnessed By	PAT DEENIHAN

<<< Fold Here >>>

All interpretations are opinions based on inferences from electrical or other measurements and we cannot and do not guarantee the accuracy or correctness of any interpretation, and we shall not, except in the case of gross or willful negligence on our part, be liable or responsible for any loss, costs, damages, or expenses incurred or sustained by anyone resulting from any interpretation made by any of our officers, agents or employees. These interpretations are also subject to our general terms and conditions set out in our current Price Schedule.

Comments

WEST OF BAZINE TO BB RD. SOUTH TO Y RD.
1/2 EAST, NORTH INTO.

Thank You for using Gemini Wireline LLC
785-625-1182

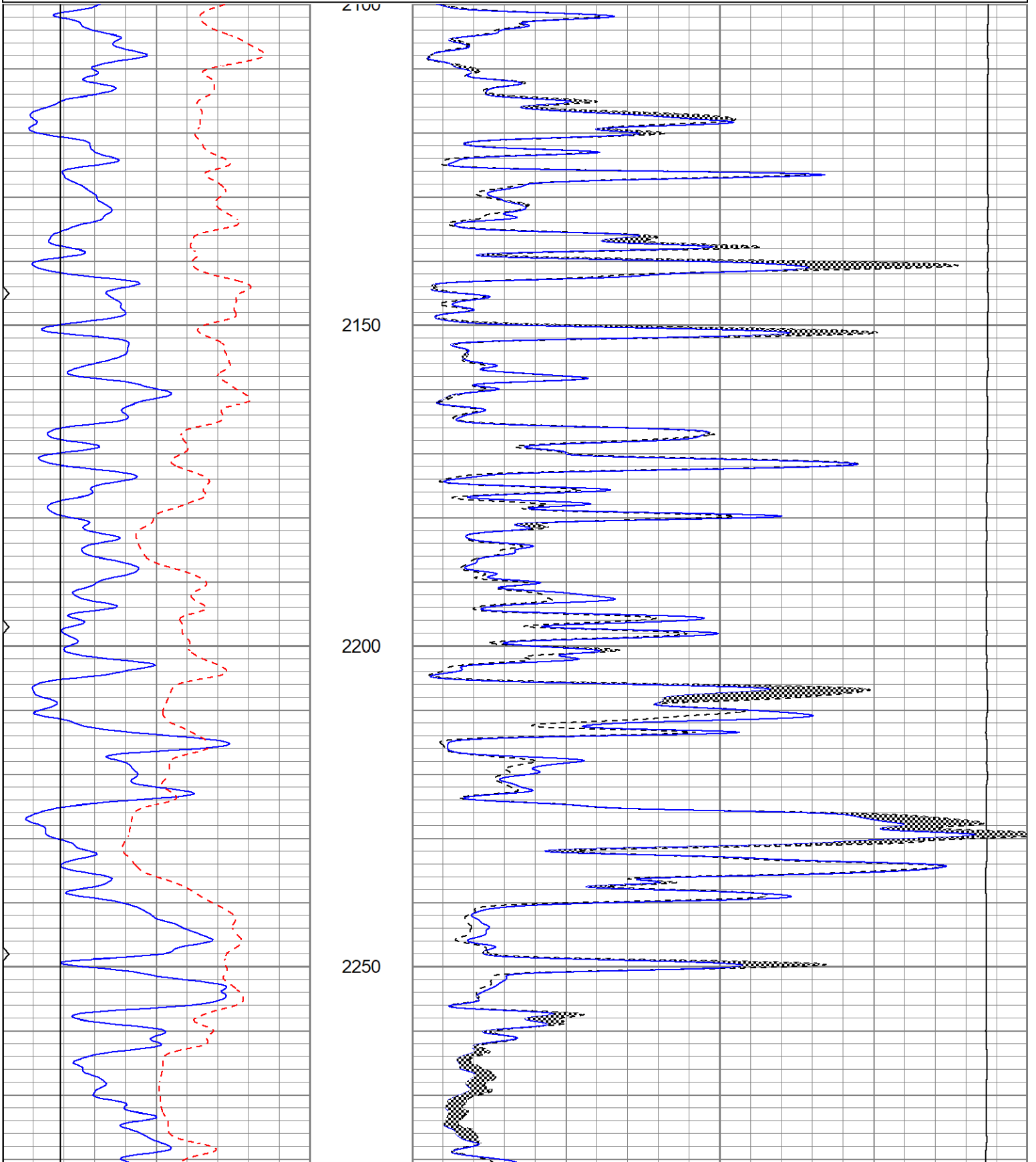


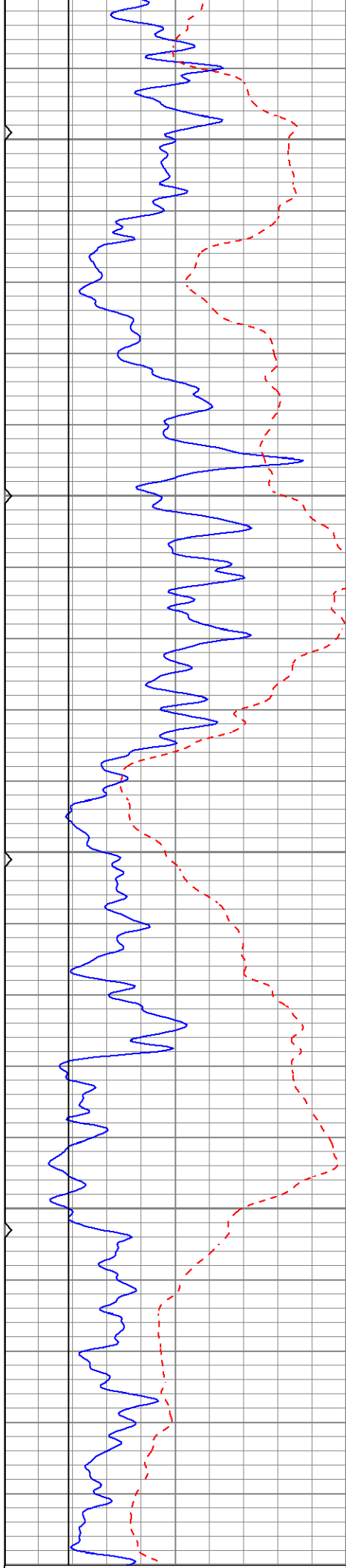
MAIN PASS

Database File tccox#3-35oh.db
 Dataset Pathname pass6.1
 Presentation Format kml
 Dataset Creation Mon Apr 25 13:29:30 2022
 Charted by Depth in Feet scaled 1:240

0	GR (GAPI)	150
6	MCAL (in)	16
6	BOREID (in)	16
0	MINMK	50

0	MN 2" (Ohm-m)	20
0	MI 1" (Ohm-m)	20
10000	LTEN (lb)	0





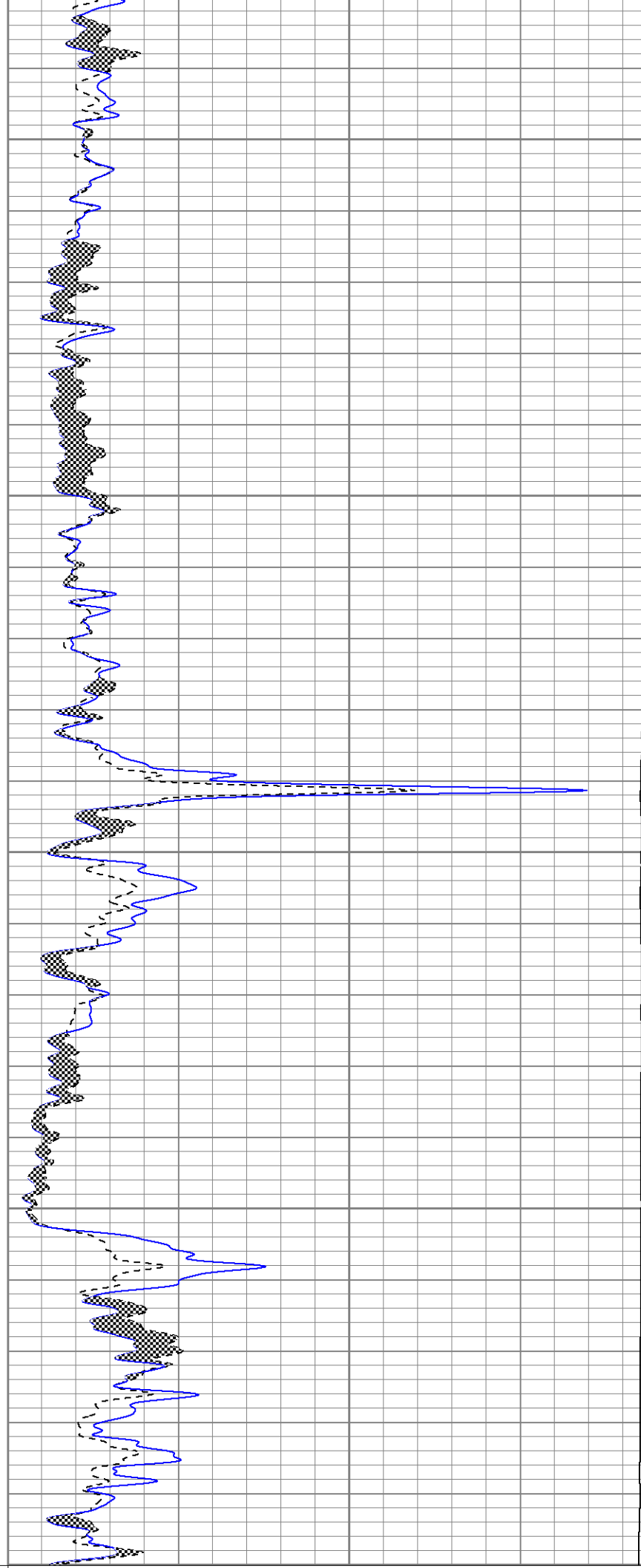
2300

2350

2400

2450

2500



0	GR (GAPI)	150
6	MCAL (in)	16
6	BOREID (in)	16
0	MINMK	50

0	MN 2" (Ohm-m)	20
0	MI 1" (Ohm-m)	20
10000	LTEN (lb)	0

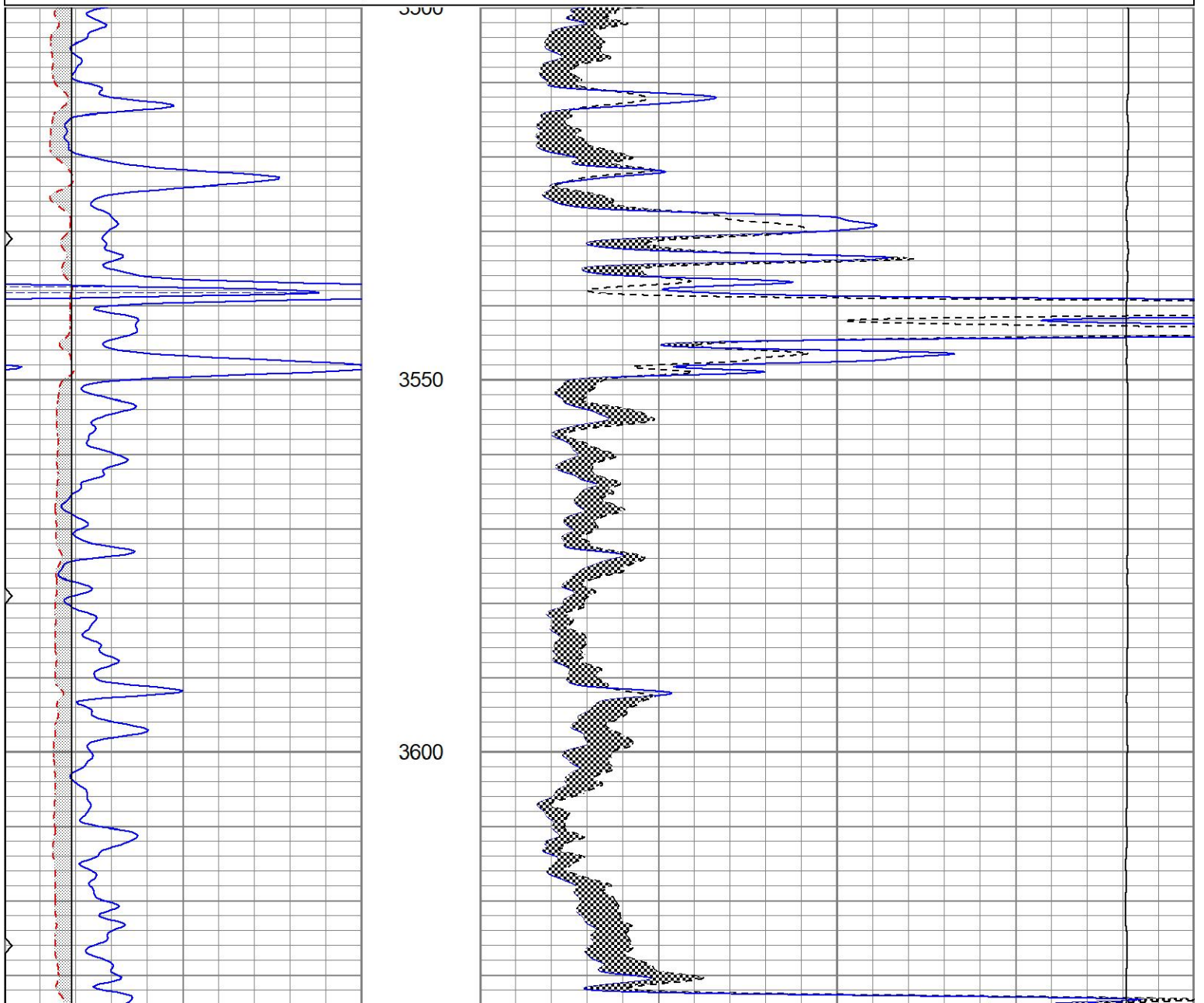


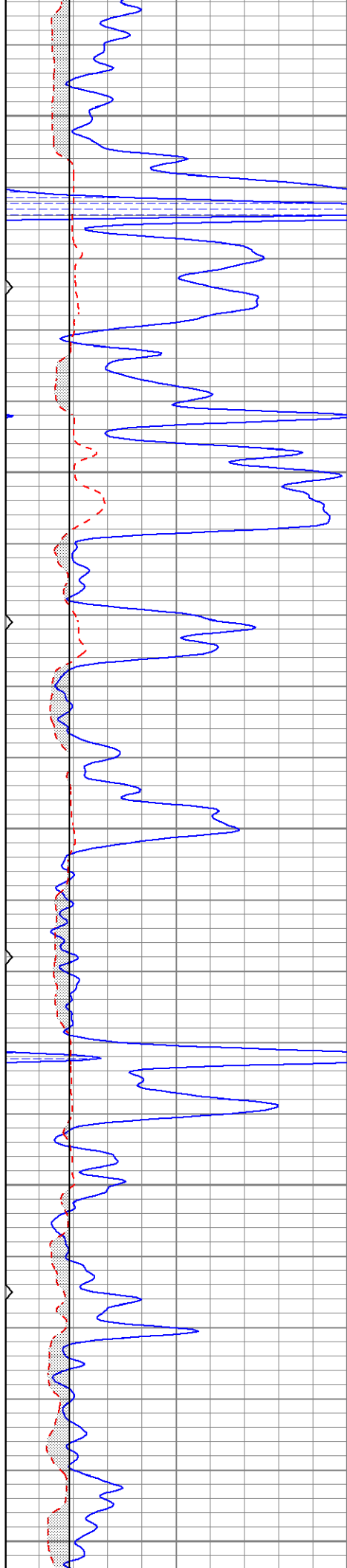
MAIN PASS

Database File tccox#3-35oh.db
 Dataset Pathname pass6.1
 Presentation Format kml
 Dataset Creation Mon Apr 25 13:29:30 2022
 Charted by Depth in Feet scaled 1:240

0	GR (GAPI)	150
6	MCAL (in)	16
6	BOREID (in)	16
0	MINMK	50

0	MN 2" (Ohm-m)	20
0	MI 1" (Ohm-m)	20
10000	LTEN (lb)	0





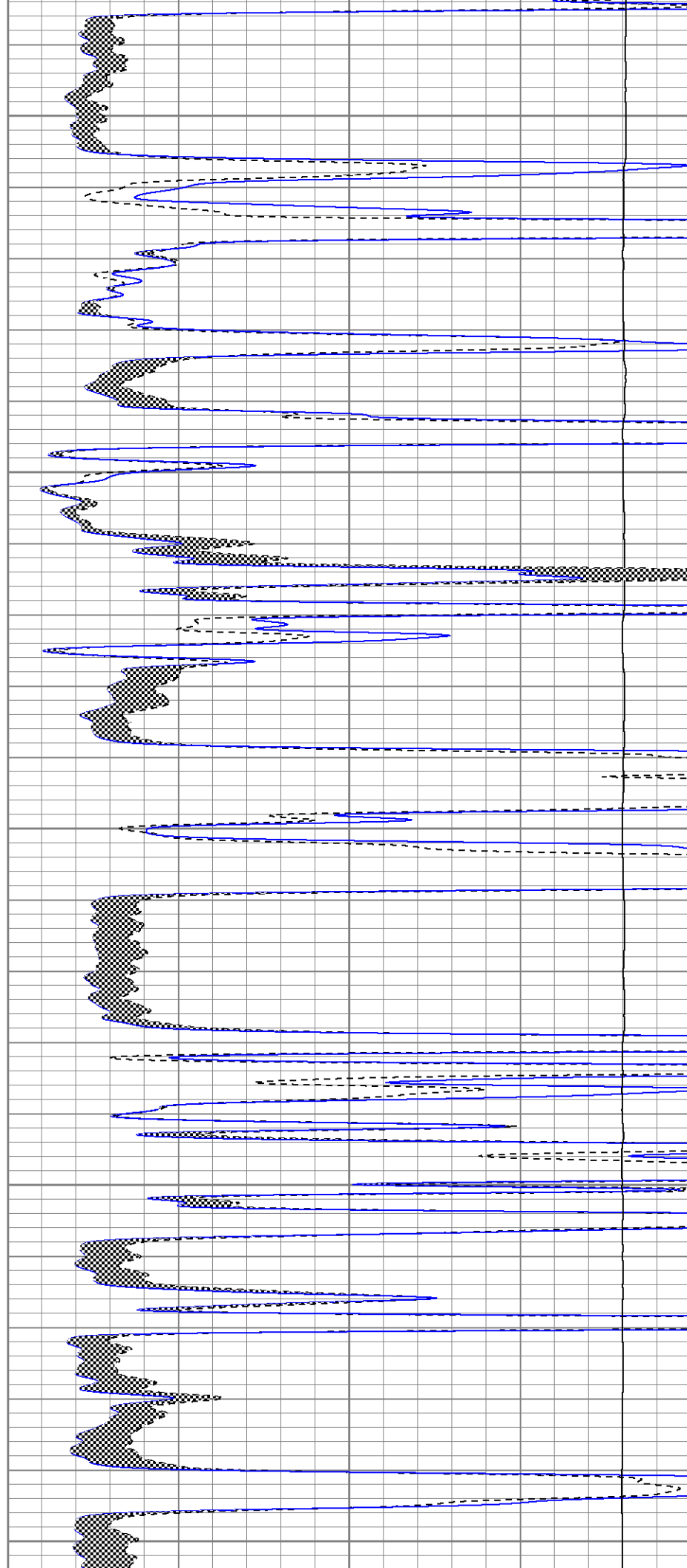
3650

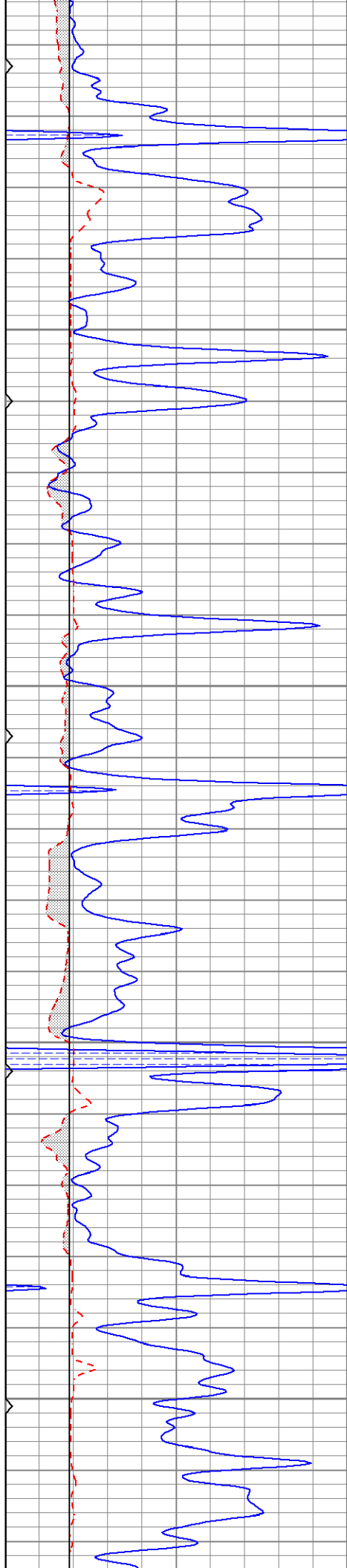
3700

3750

3800

3850



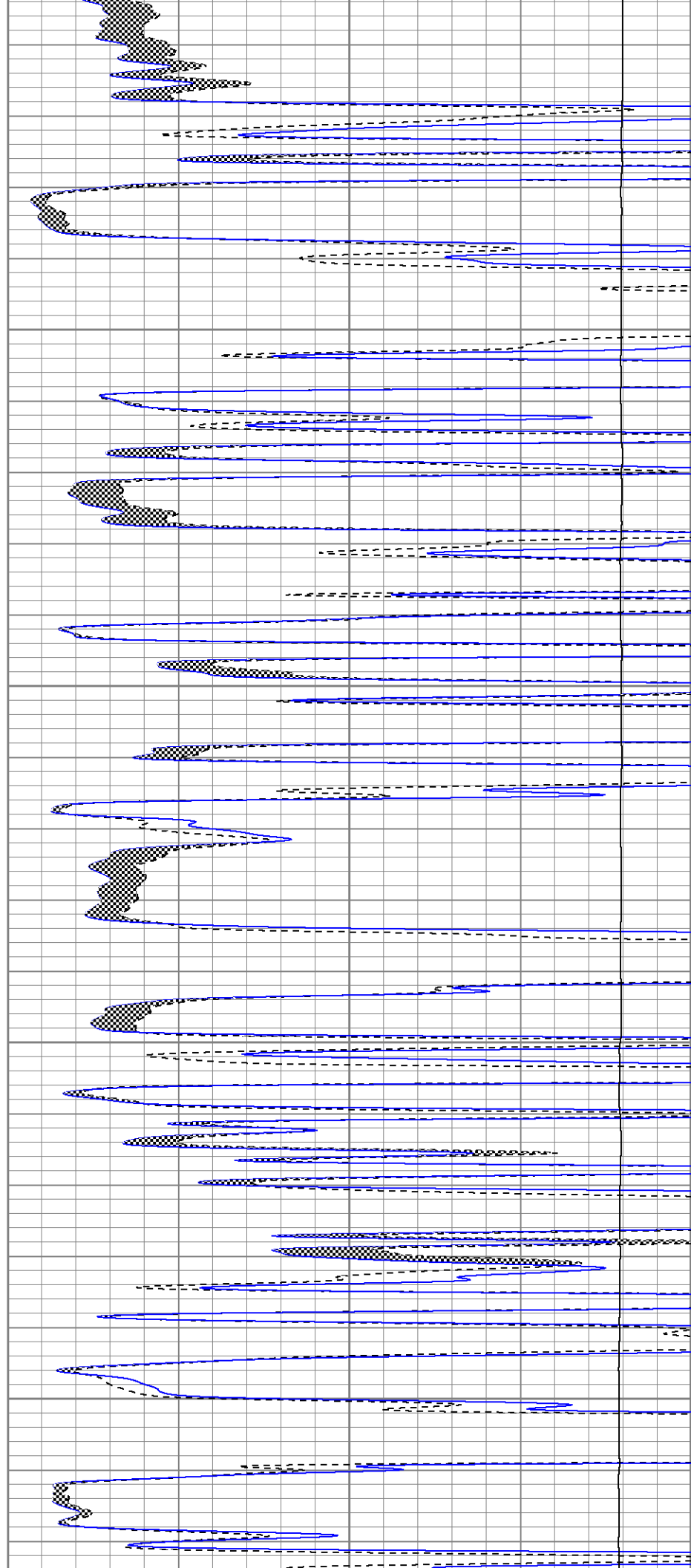


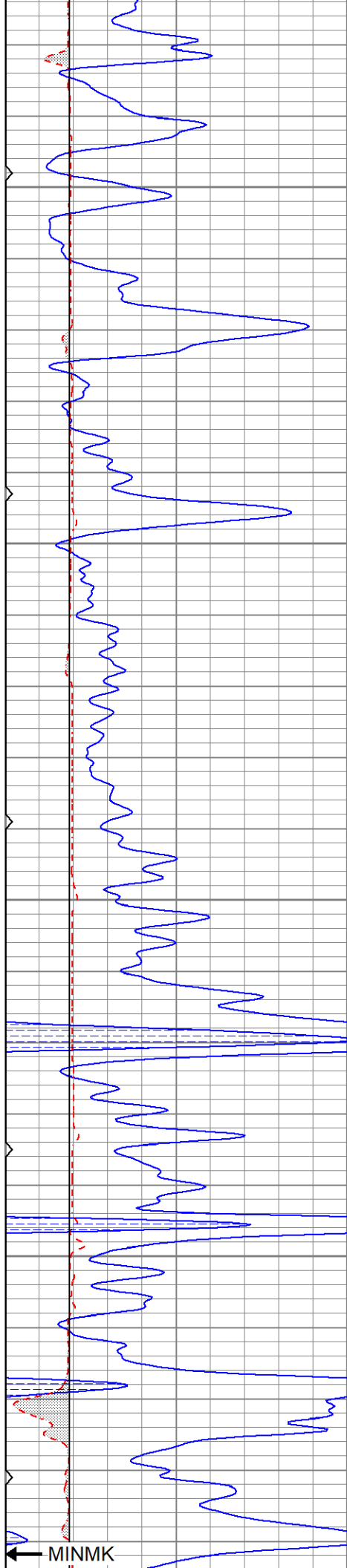
3900

3950

4000

4050



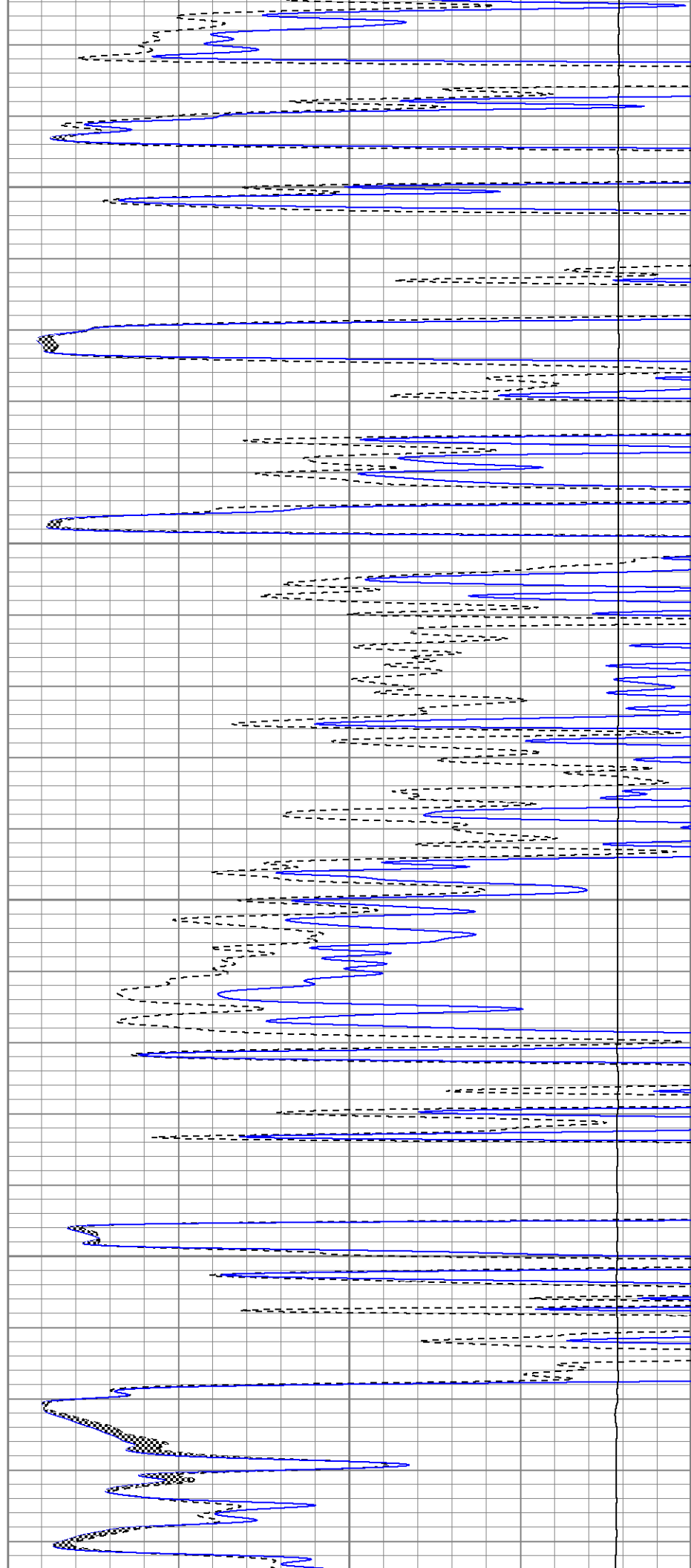


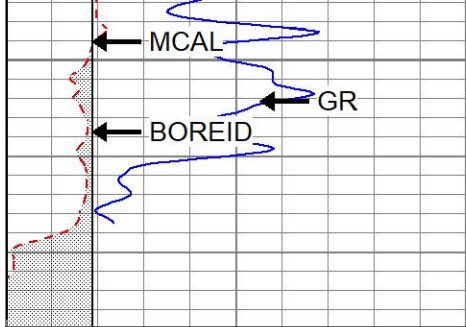
4100

4150

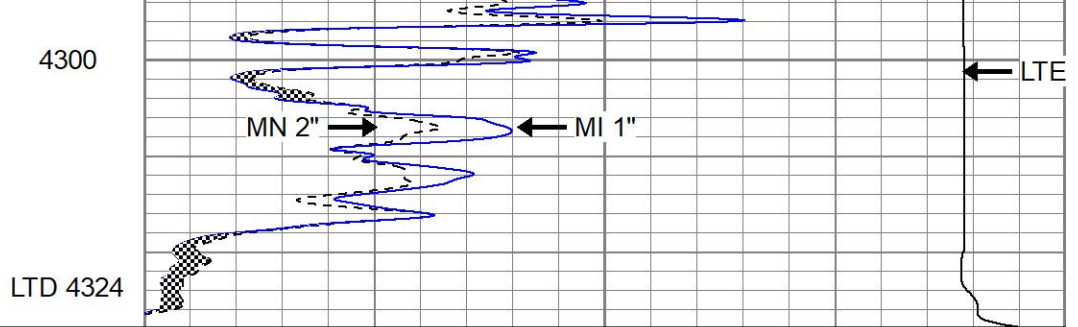
4200

4250





0	GR (GAPI)	150
6	MCAL (in)	16
6	BOREID (in)	16
0	MINMK	50



0	MN 2" (Ohm-m)	20
0	MI 1" (Ohm-m)	20
10000	LTEN (lb)	0

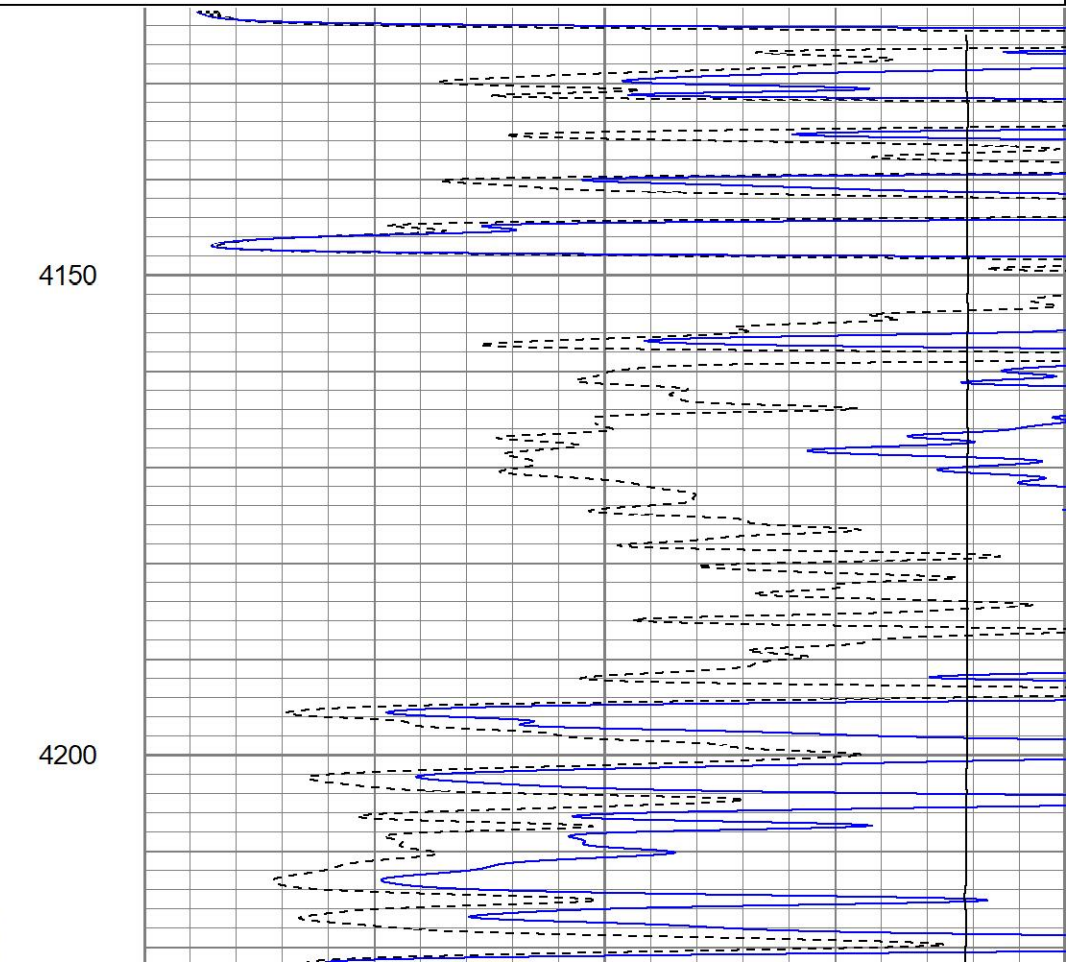
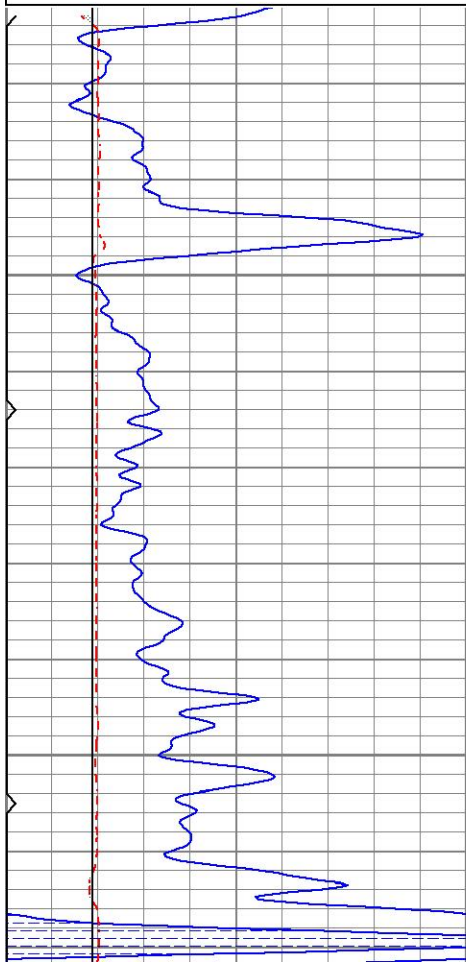


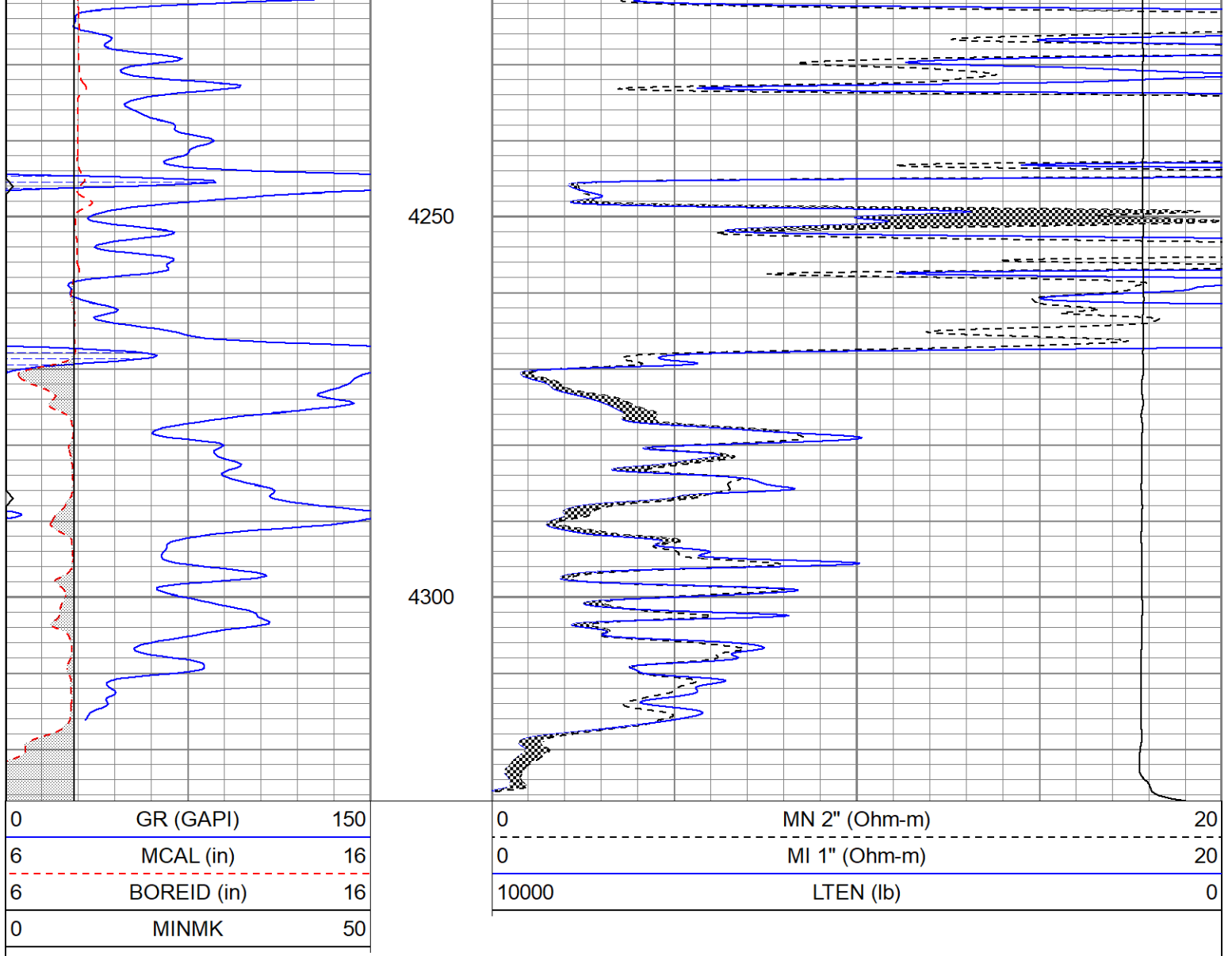
REPEAT SECTION

Database File tccox#3-35oh.db
 Dataset Pathname pass5RP
 Presentation Format kml
 Dataset Creation Mon Apr 25 13:32:31 2022
 Charted by Depth in Feet scaled 1:240

0	GR (GAPI)	150
6	MCAL (in)	16
6	BOREID (in)	16
0	MINMK	50

0	MN 2" (Ohm-m)	20
0	MI 1" (Ohm-m)	20
10000	LTEN (lb)	0





Calibration Report

Database File tccox#3-35oh.db
 Dataset Pathname pass5RP
 Dataset Creation Mon Apr 25 13:32:31 2022

Microlog Calibration Report

Serial-Model: 012-Pengo
 Performed: Thu Apr 21 05:59:33 2022

	Readings			References			Results	
	Zero	Cal		Zero	Cal		m	b
Normal	0.0075	0.1008	V	0.0000	10.0000	Ohm-m	107.1870	-0.8057
Inverse	0.0083	0.1271	V	0.0000	10.0000	Ohm-m	84.1608	-0.6963
Caliper	2.7578	4.6384	V	7.9000	14.0000	in	3.2437	-0.8453

Gamma Ray Calibration Report

Serial Number: 2001
 Tool Model: OH
 Performed: Sat Sep 4 22:48:39 2021

Calibrator Value: 1.0 GAPI

Background Reading: 0.0 cps

Calibrator Reading: 1.0 cps

Sensitivity: 0.7400 GAPI/cps