



# DUAL INDUCTION LOG

Company TRIPLE CROWN OPERATING, LLC.  
 Well COX #3-35  
 Field COUNTY LINE  
 County NESS  
 State KS

Company TRIPLE CROWN OPERATING, LLC.  
 Well COX #3-35  
 Field COUNTY LINE  
 County NESS State KS

Location: API #: 15 135 26166  
 740' FSL & 1758' FWL  
 SEC 35 TWP 20S RGE 22W  
 Permanent Datum Ground Level Elevation 2164  
 Log Measured From KB 7' AGL  
 Drilling Measured From KB  
 Other Services  
 CDNL  
 ML  
 Elevation  
 K.B. 2171  
 D.F. 2169  
 G.L. 2164

Date	4/25/22
Run Number	One
Depth Driller	4328
Depth Logger	4324
Bottom Logged Interval	4322
Top Log Interval	00
Casing Driller	8 5/8" @ 1376
Casing Logger	1376
Bit Size	7 7/8"
Type Fluid in Hole	Chemical
Density / Viscosity	9.3/5710
pH / Fluid Loss	11.0/8.0
Source of Sample	Pit
Rm @ Meas. Temp	.9@70degf
Rmf @ Meas. Temp	.68@70degf
Rmc @ Meas. Temp	1.08@70degf
Source of Rmf / Rmc	Calculated
Rm @ BHT	.54@115degf
Time Circulation Stopped	6:00 A.M.
Time Logger on Bottom	11:01 AM
Maximum Recorded Temperature	115degf
Equipment Number	T605
Location	Hays, KS
Recorded By	GUS PFANENSTIEL
Witnessed By	PAT DEENIHAN

<<< Fold Here >>>

All interpretations are opinions based on inferences from electrical or other measurements and we cannot and do not guarantee the accuracy or correctness of any interpretation, and we shall not, except in the case of gross or willful negligence on our part, be liable or responsible for any loss, costs, damages, or expenses incurred or sustained by anyone resulting from any interpretation made by any of our officers, agents or employees. These interpretations are also subject to our general terms and conditions set out in our current Price Schedule.

### Comments

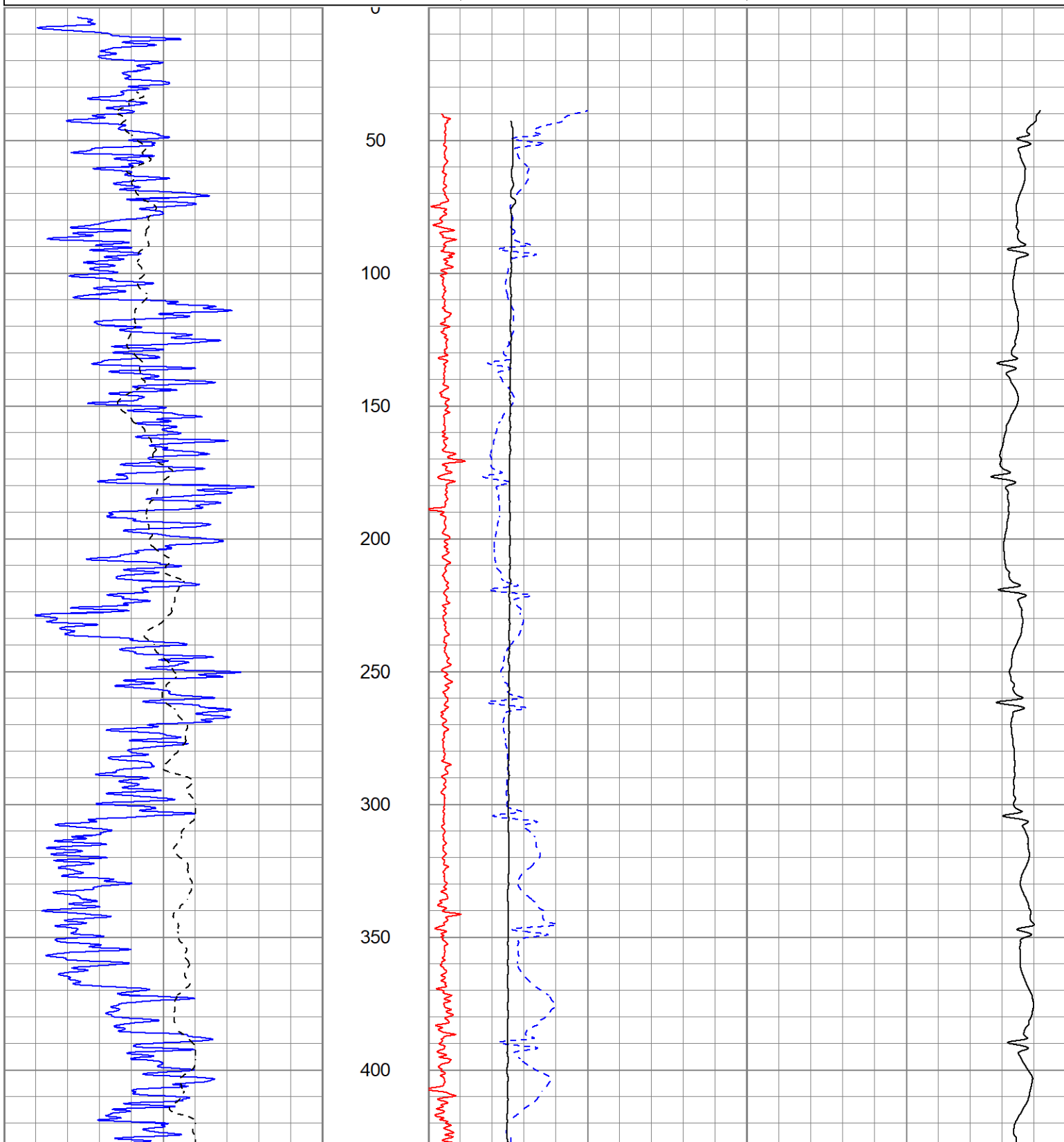
WEST OF BAZINE TO BB RD. SOUTH TO Y RD.  
 1/2 EAST, NORTH INTO.  
 Thank You for using Gemini Wireline LLC  
 785-625-1182

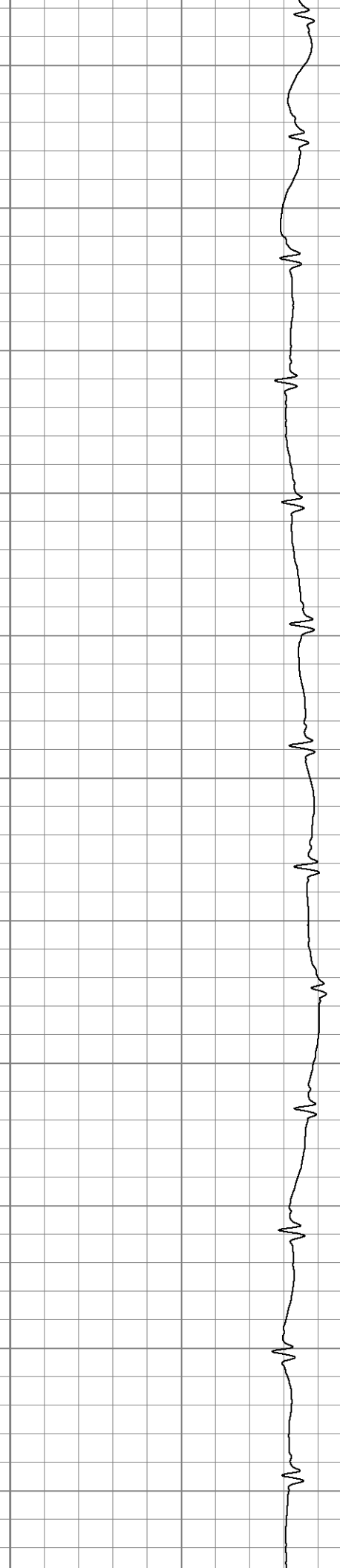
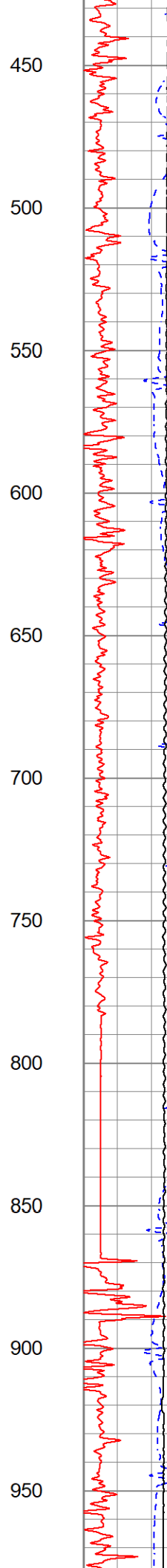
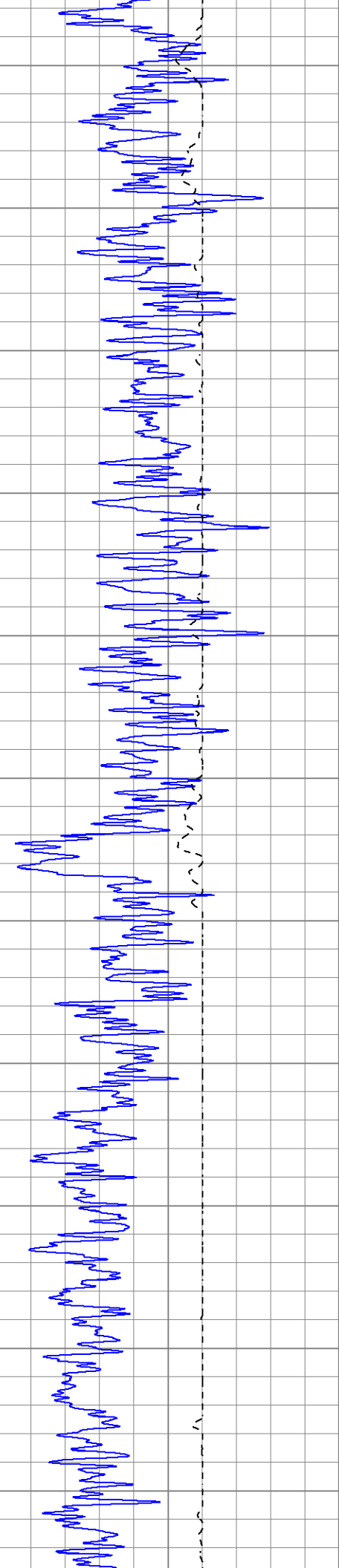


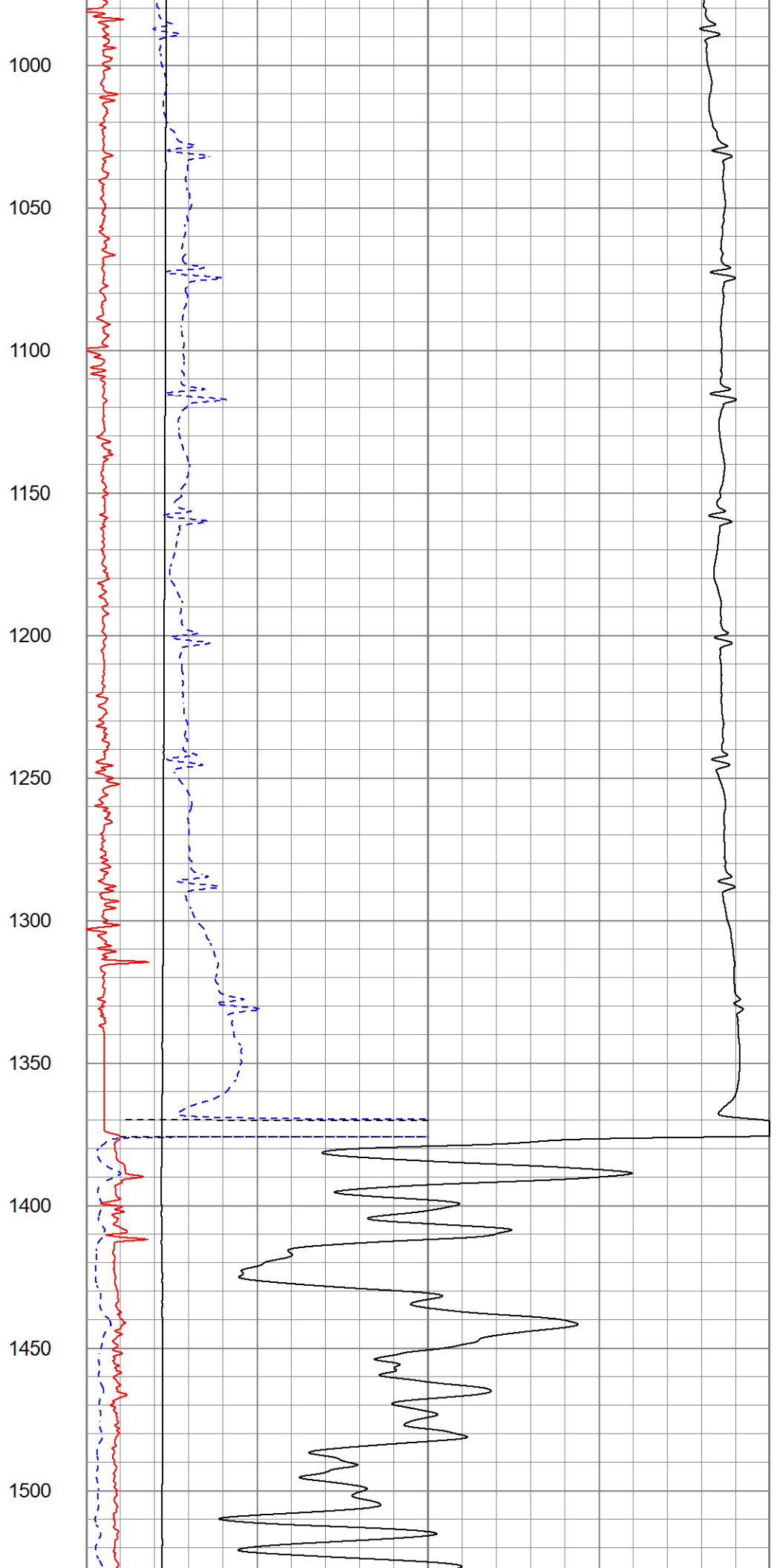
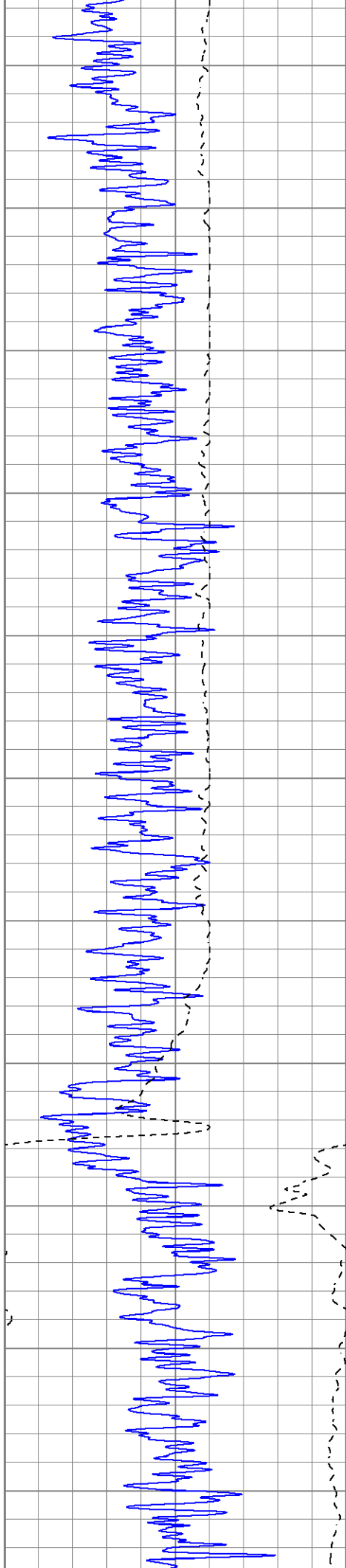
# MAIN PASS

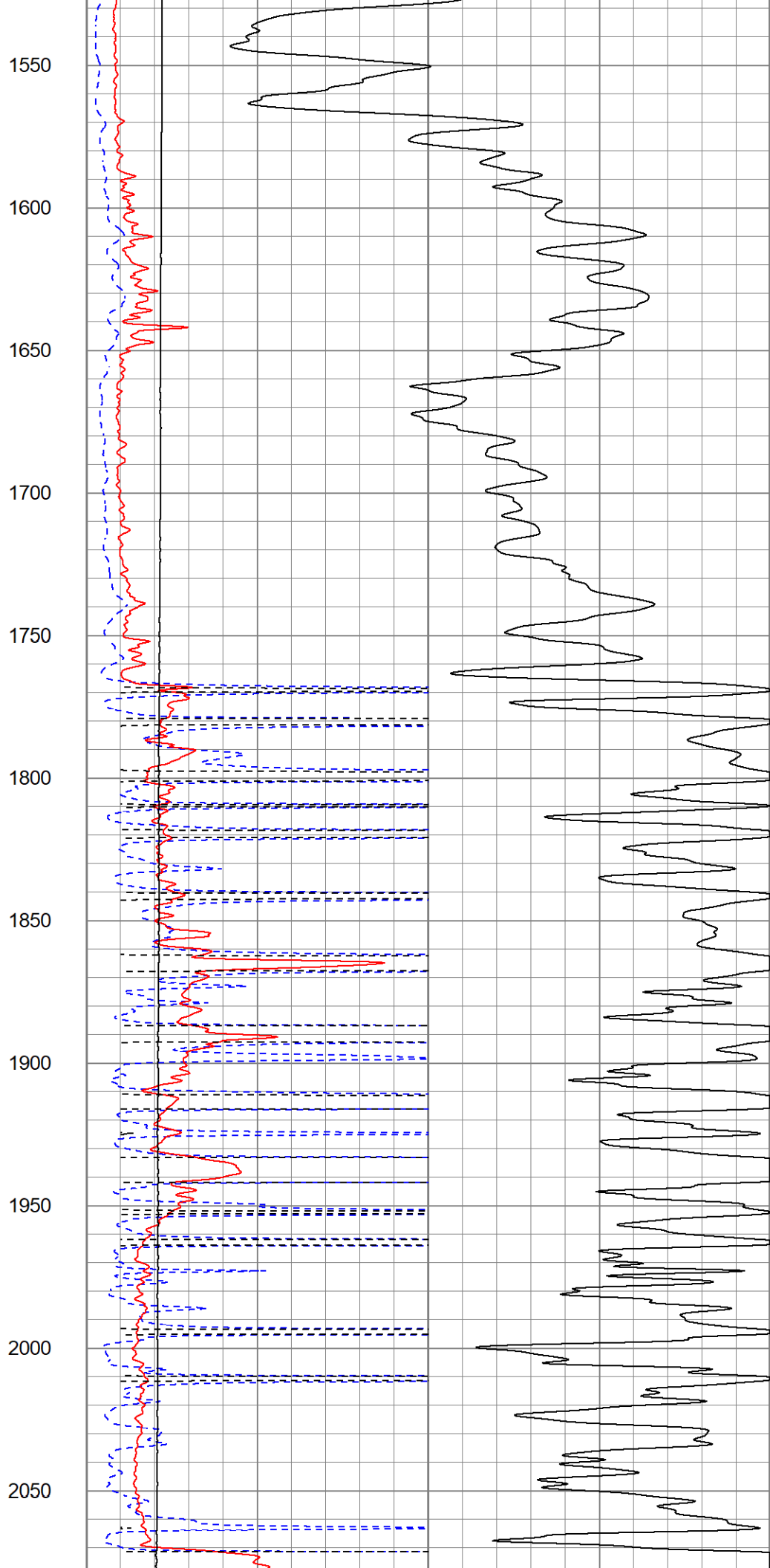
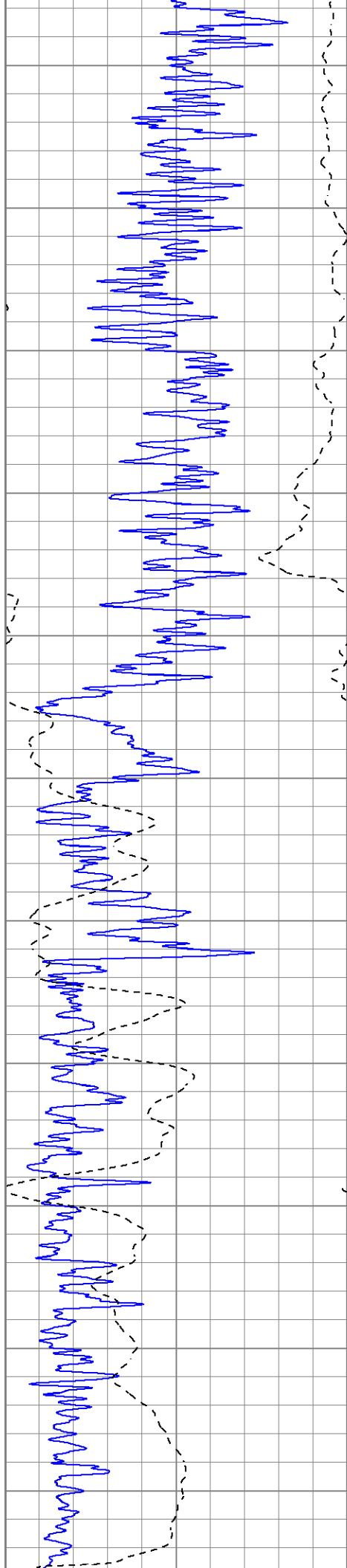
Database File tccox#3-35oh.db  
 Dataset Pathname pass4.1  
 Presentation Format kdillinn  
 Dataset Creation Mon Apr 25 12:30:50 2022  
 Charted by Depth in Feet scaled 1:600

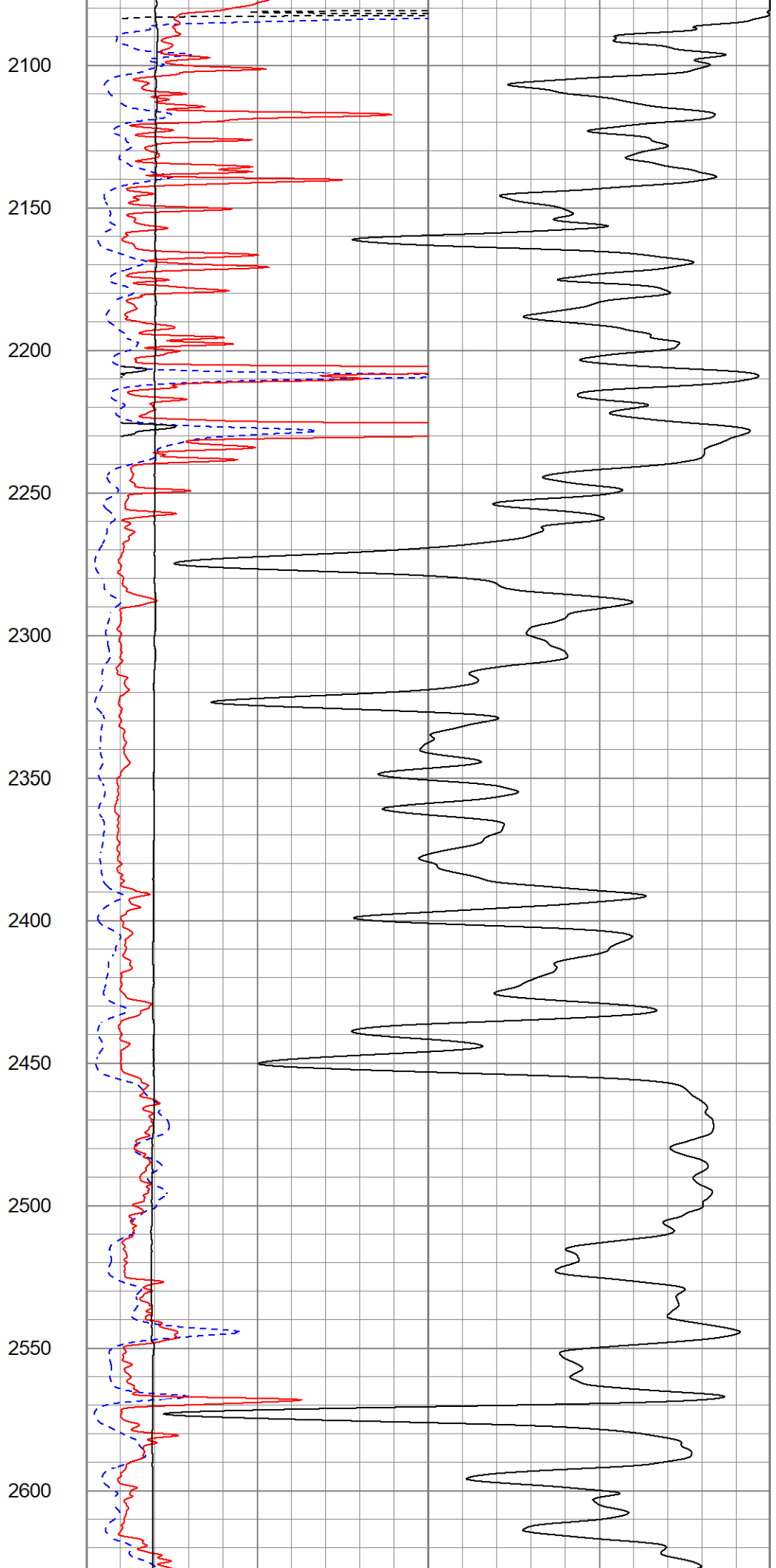
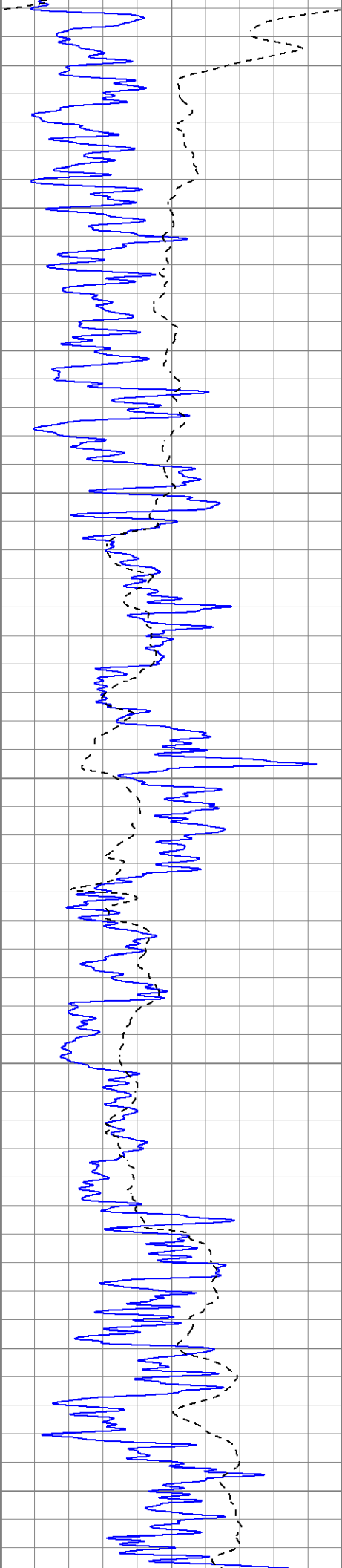
0	GR (GAPI)	150	1000	CILD (mmho/m)	0
-100	SP (mV)	100	10000	LTEN (lb)	0
-----			0	RILD (Ohm-m)	50
-----			0	RLL3 (Ohm-m)	50
-----			50	RILD x 10 (Ohm-m)	500
-----			50	RLL3 x 10 (Ohm-m)	500

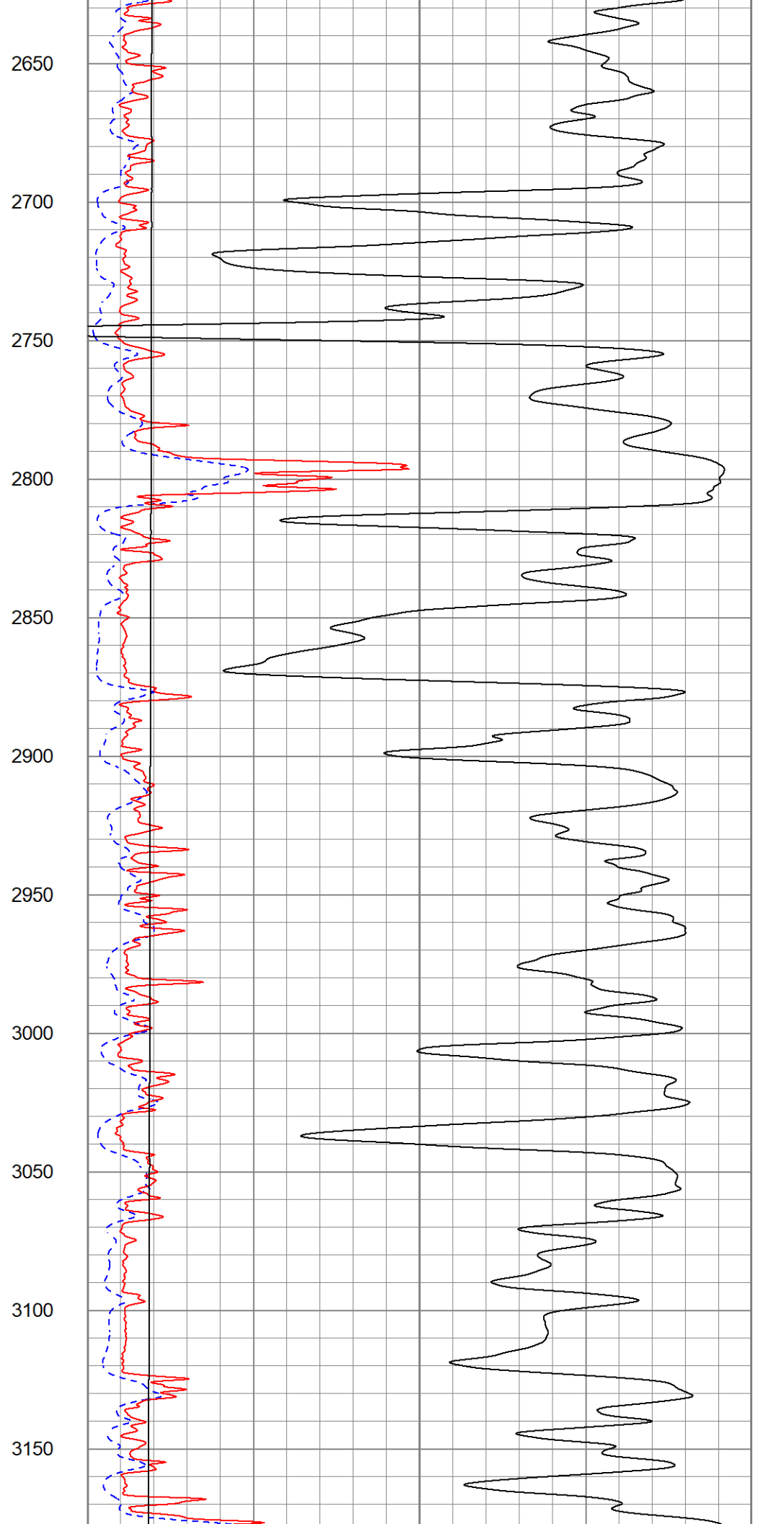
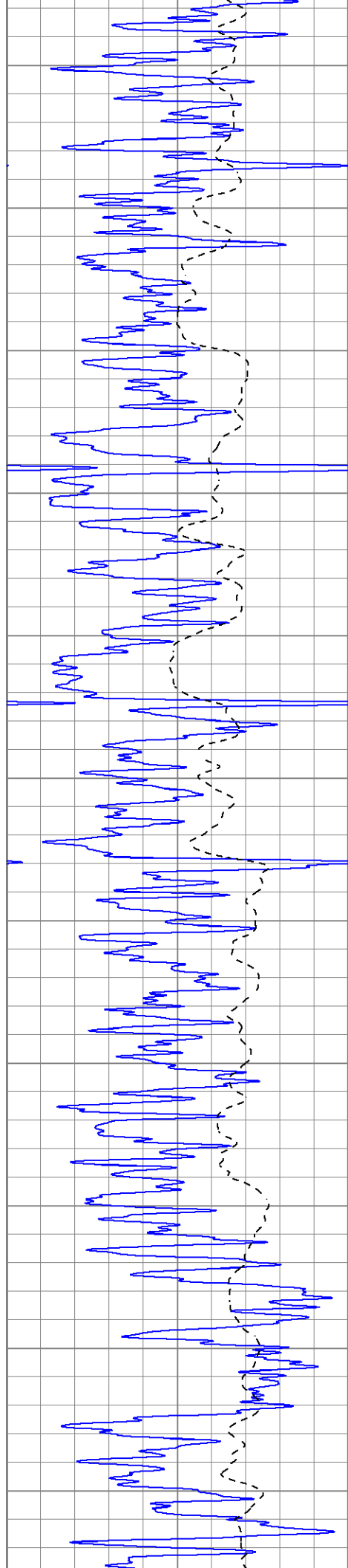


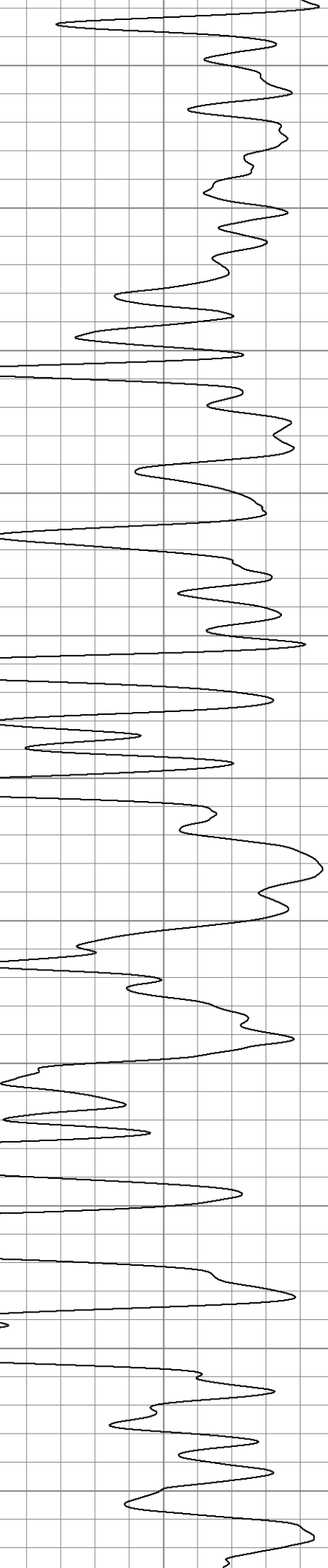
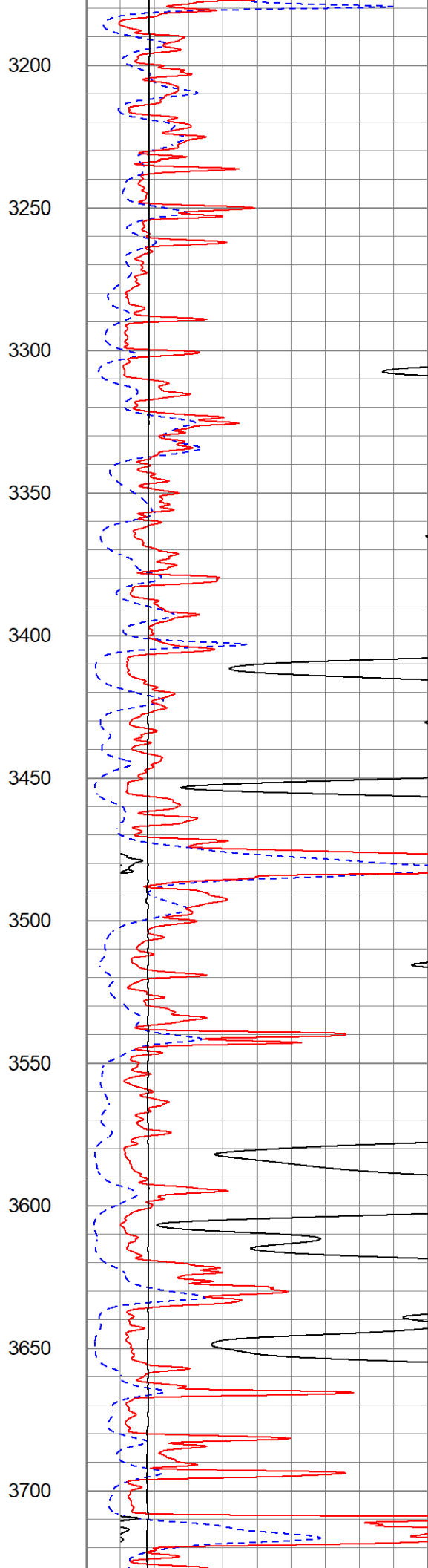
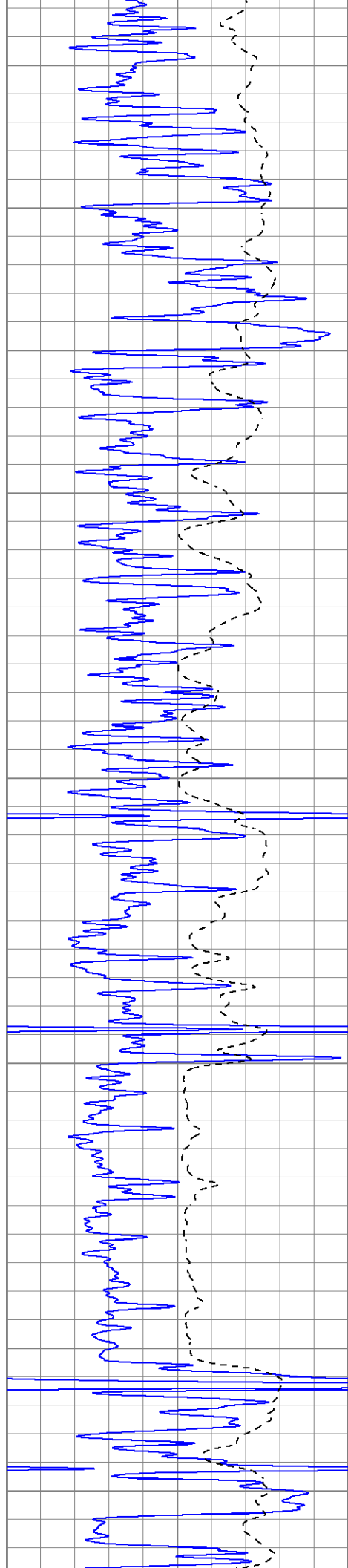


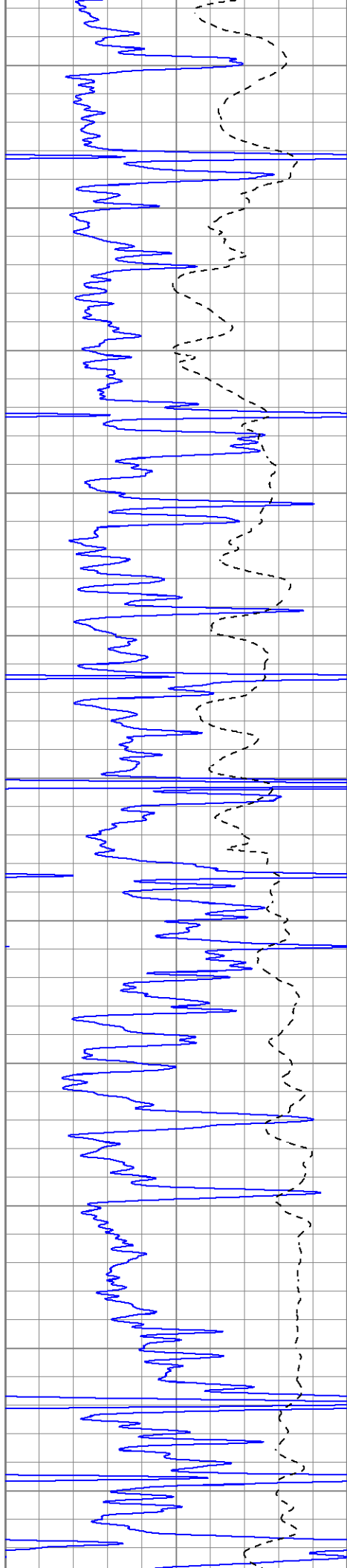












3750

3800

3850

3900

3950

4000

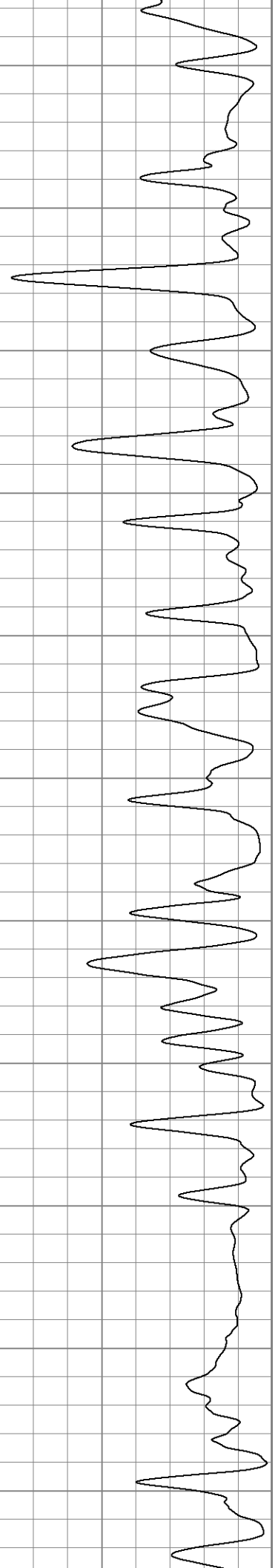
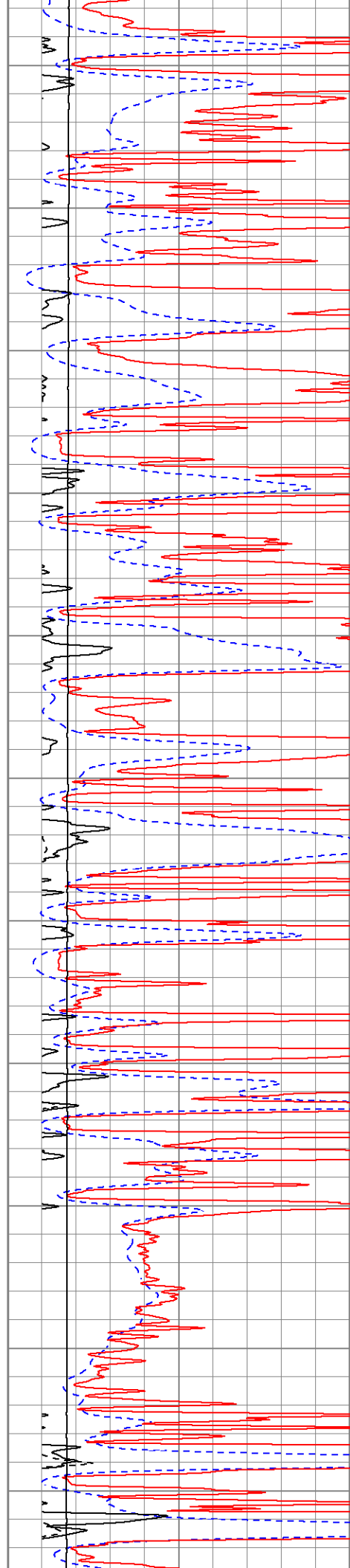
4050

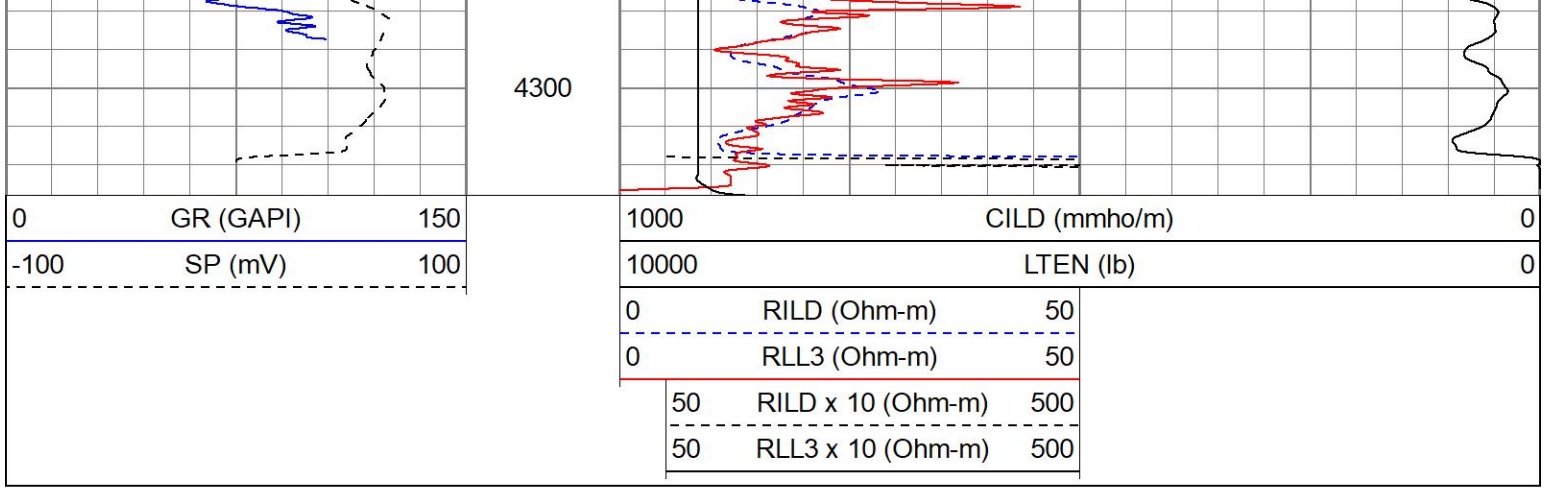
4100

4150

4200

4250



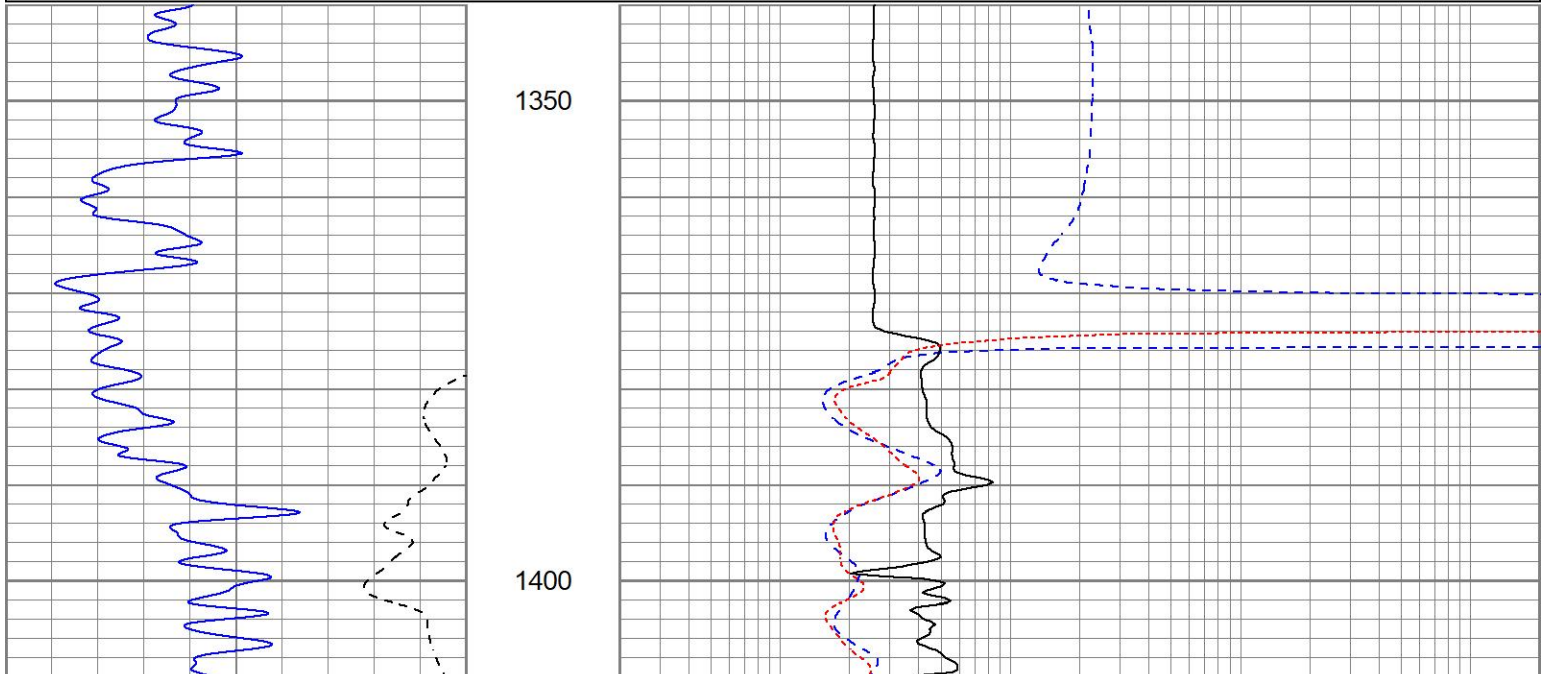




# MAIN PASS

Database File	tccox#3-35oh.db
Dataset Pathname	pass4.1
Presentation Format	kdil
Dataset Creation	Mon Apr 25 12:30:50 2022
Charted by	Depth in Feet scaled 1:240

0	GR (GAPI)	150	0.2	RILD (Ohm-m)	2000
-100	SP (mV)	100	0.2	RLL3 (Ohm-m)	2000
			0.2	RILM (Ohm-m)	2000



0	GR (GAPI)	150	0.2	RILD (Ohm-m)	2000
-100	SP (mV)	100	0.2	RLL3 (Ohm-m)	2000
			0.2	RILM (Ohm-m)	2000

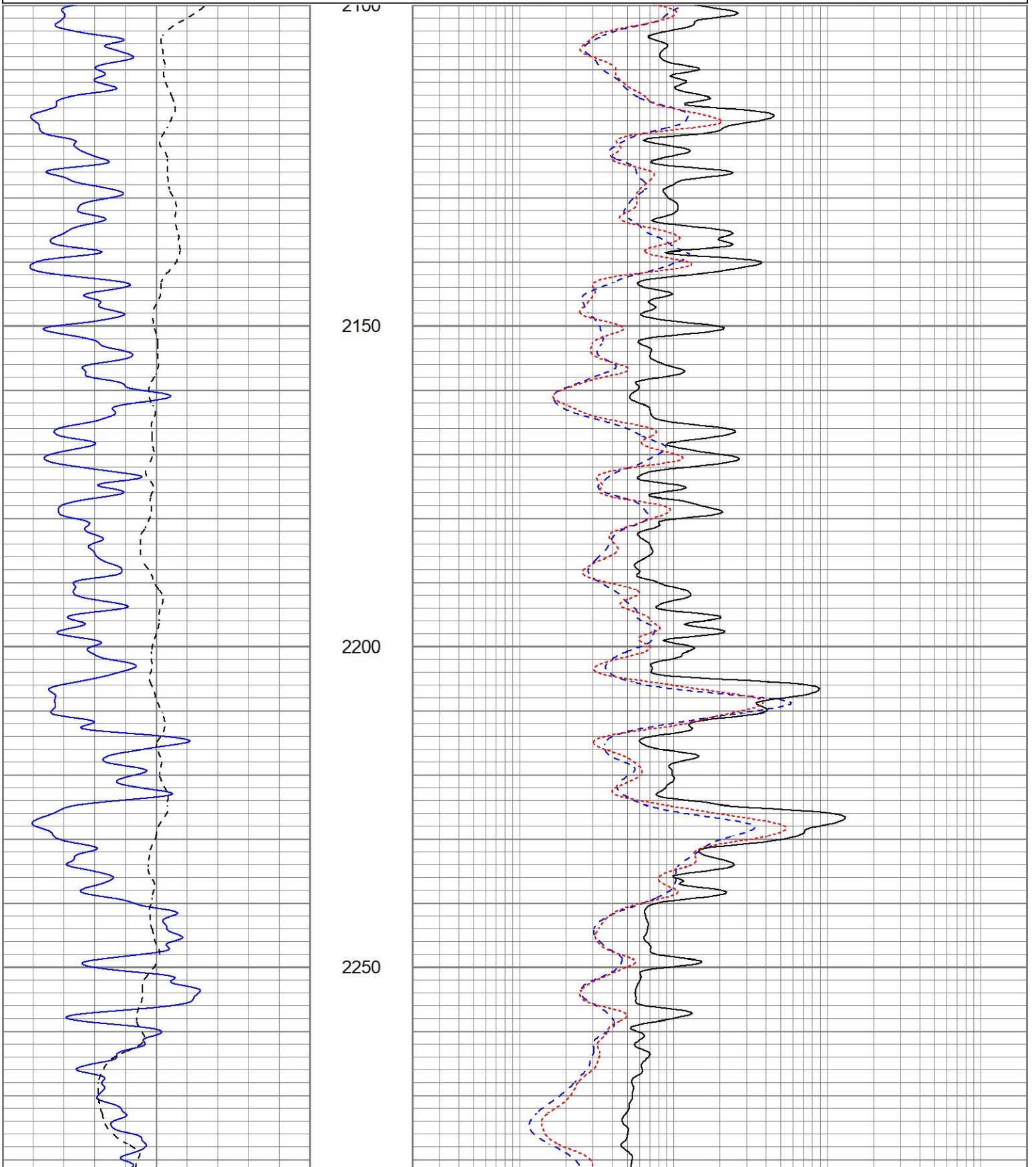


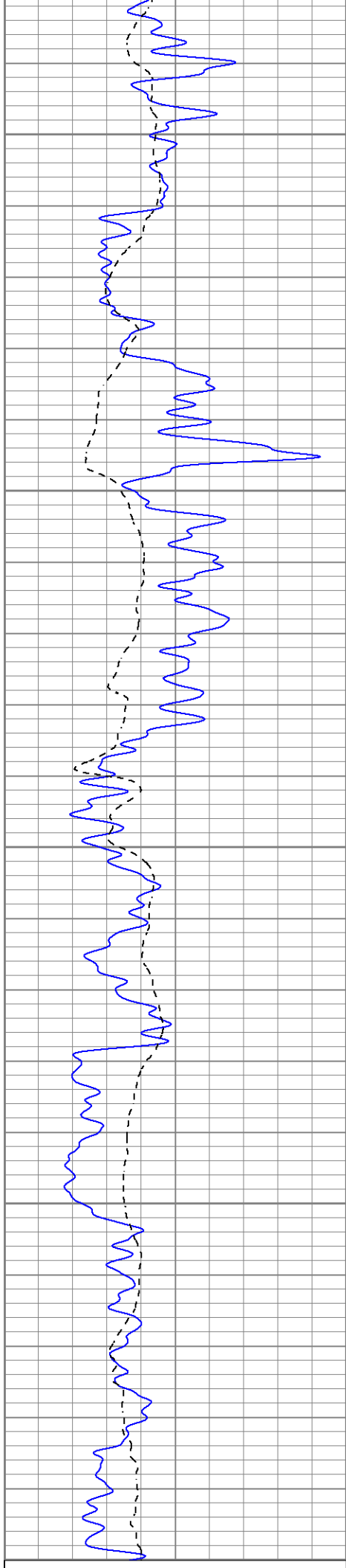
# MAIN PASS

Database File tccox#3-35oh.db  
 Dataset Pathname pass4.1  
 Presentation Format kdil  
 Dataset Creation Mon Apr 25 12:30:50 2022  
 Charted by Depth in Feet scaled 1:240

0	GR (GAPI)	150
-100	SP (mV)	100

0.2	RILD (Ohm-m)	2000
0.2	RLL3 (Ohm-m)	2000
0.2	RILM (Ohm-m)	2000





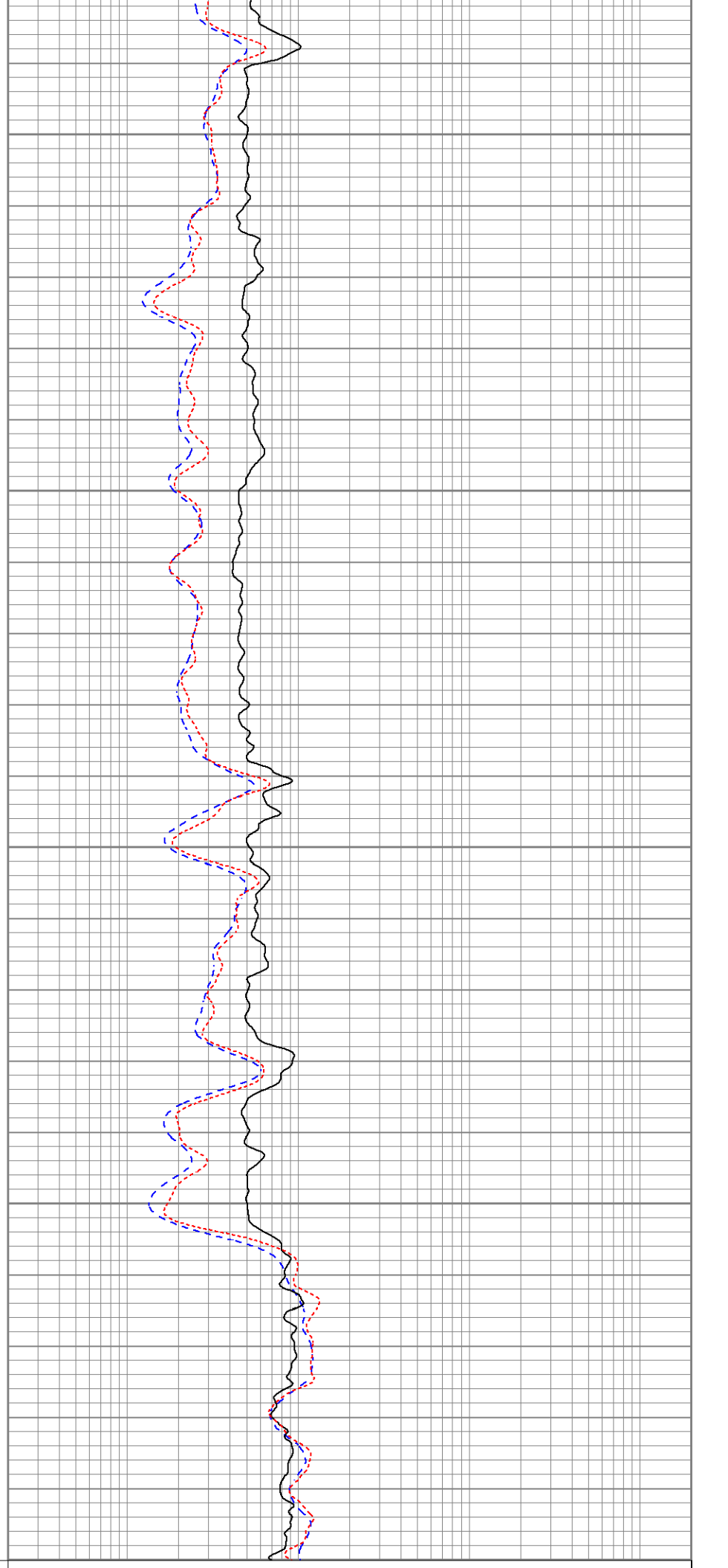
2300

2350

2400

2450

2500



0	GR (GAPI)	150
-100	SP (mV)	100

0.2	RILD (Ohm-m)	2000
0.2	RLL3 (Ohm-m)	2000
0.2	RILM (Ohm-m)	2000

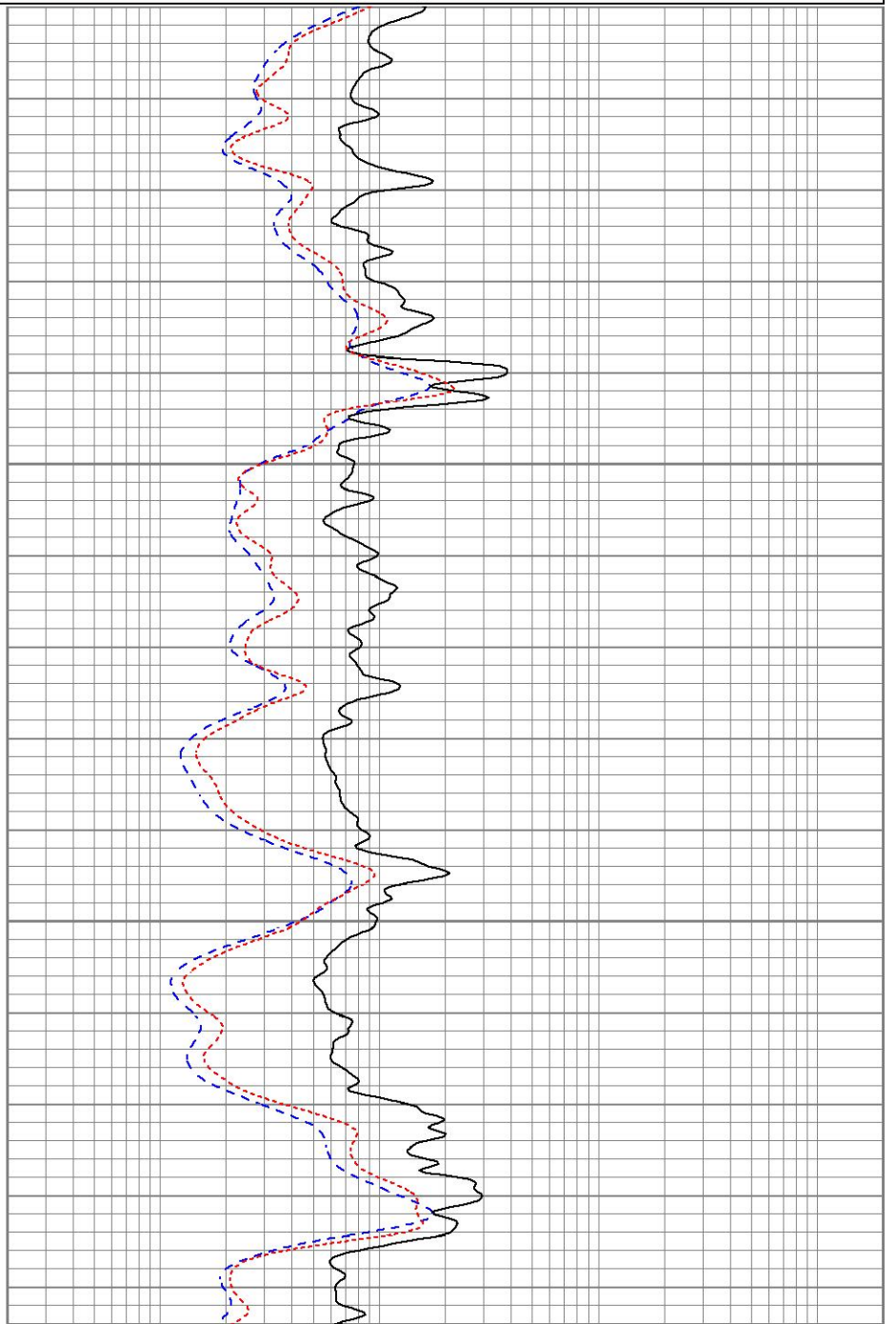
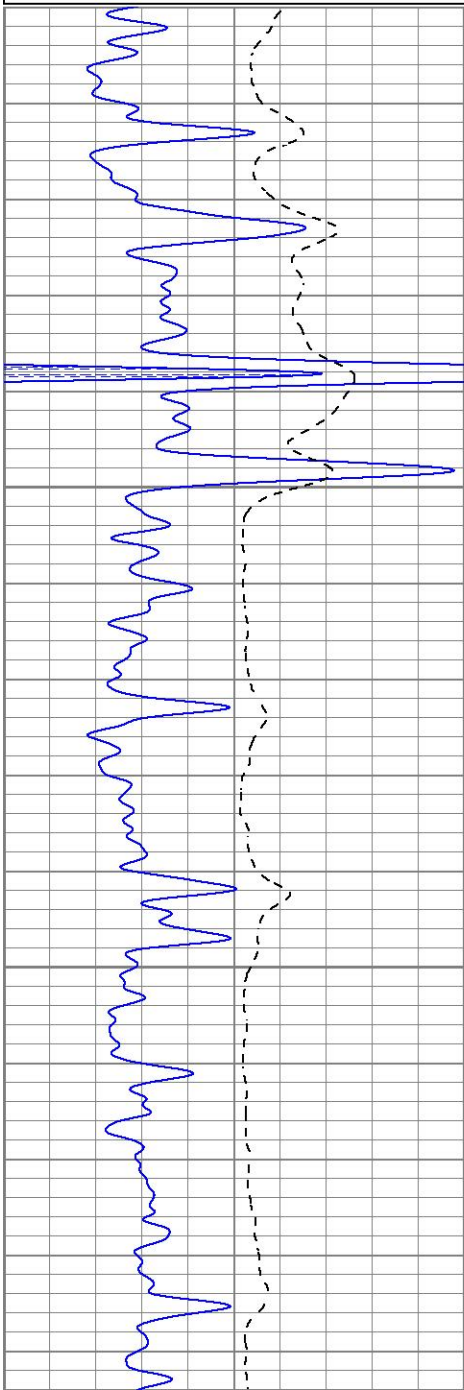


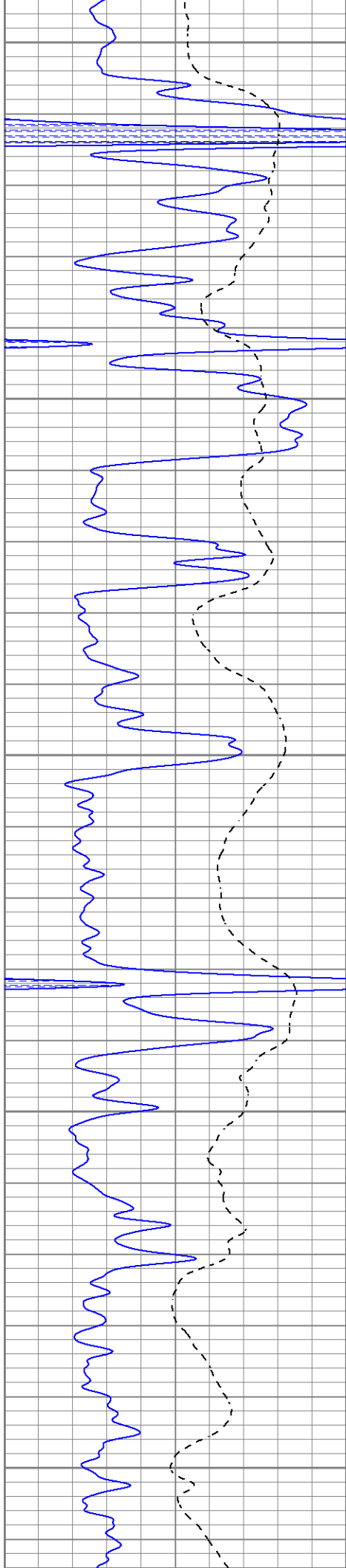
# MAIN PASS

Database File: tccox#3-35oh.db  
 Dataset Pathname: pass4.1  
 Presentation Format: kdil  
 Dataset Creation: Mon Apr 25 12:30:50 2022  
 Charted by: Depth in Feet scaled 1:240

0	GR (GAPI)	150
-100	SP (mV)	100

0.2	RILD (Ohm-m)	2000
0.2	RLL3 (Ohm-m)	2000
0.2	RILM (Ohm-m)	2000





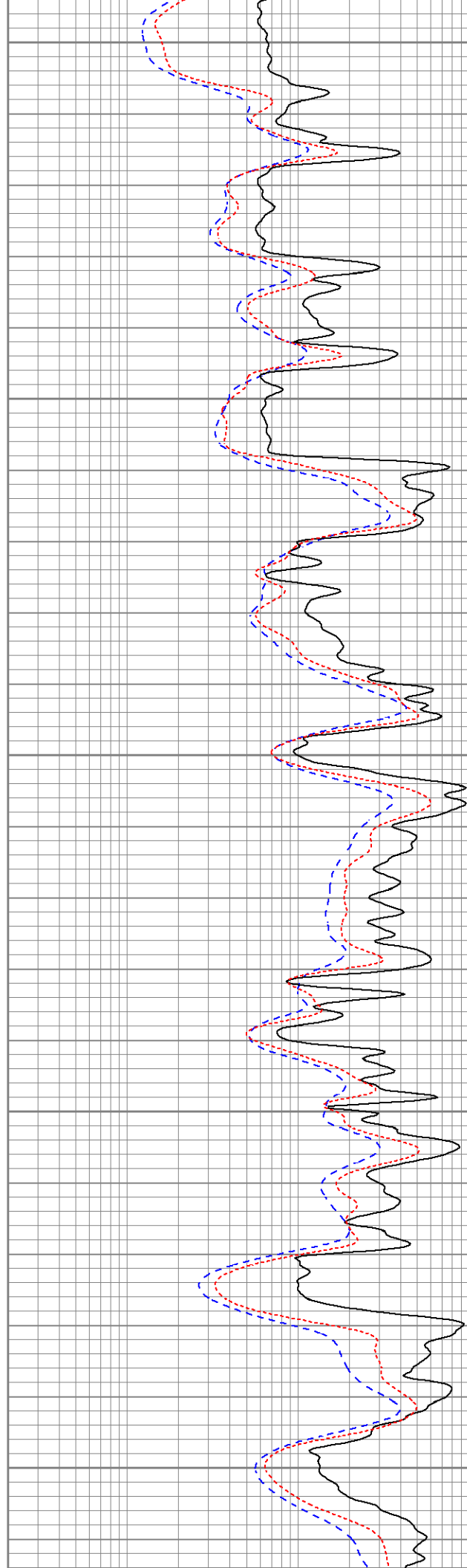
3650

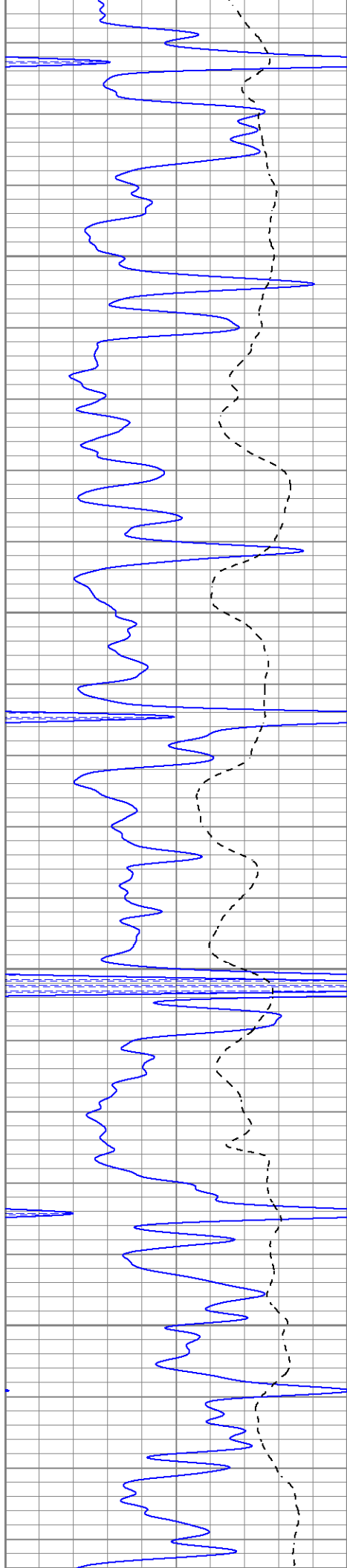
3700

3750

3800

3850



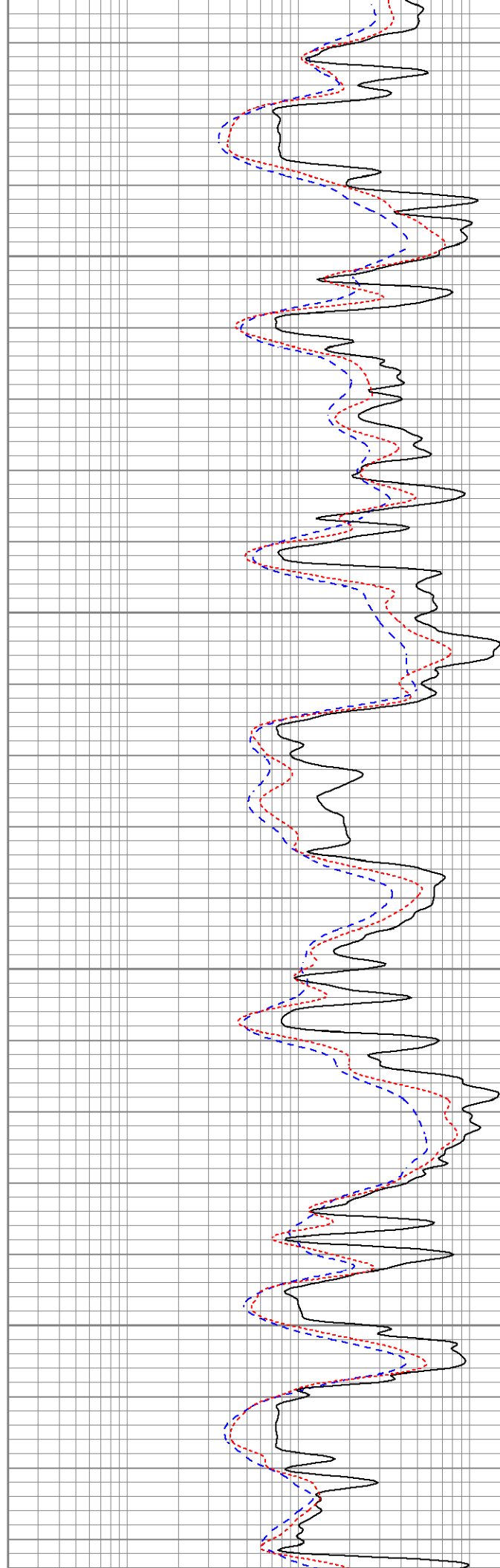


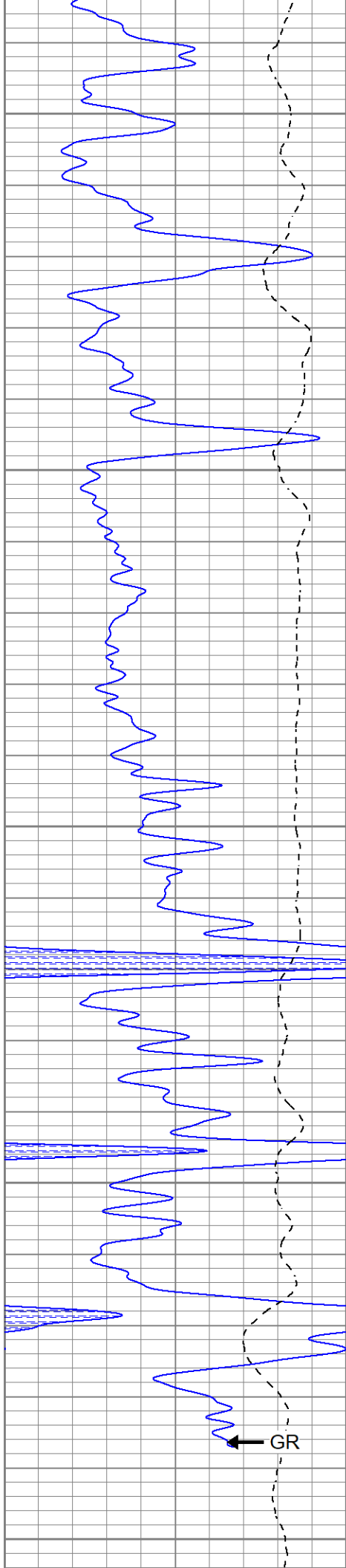
3900

3950

4000

4050





4100

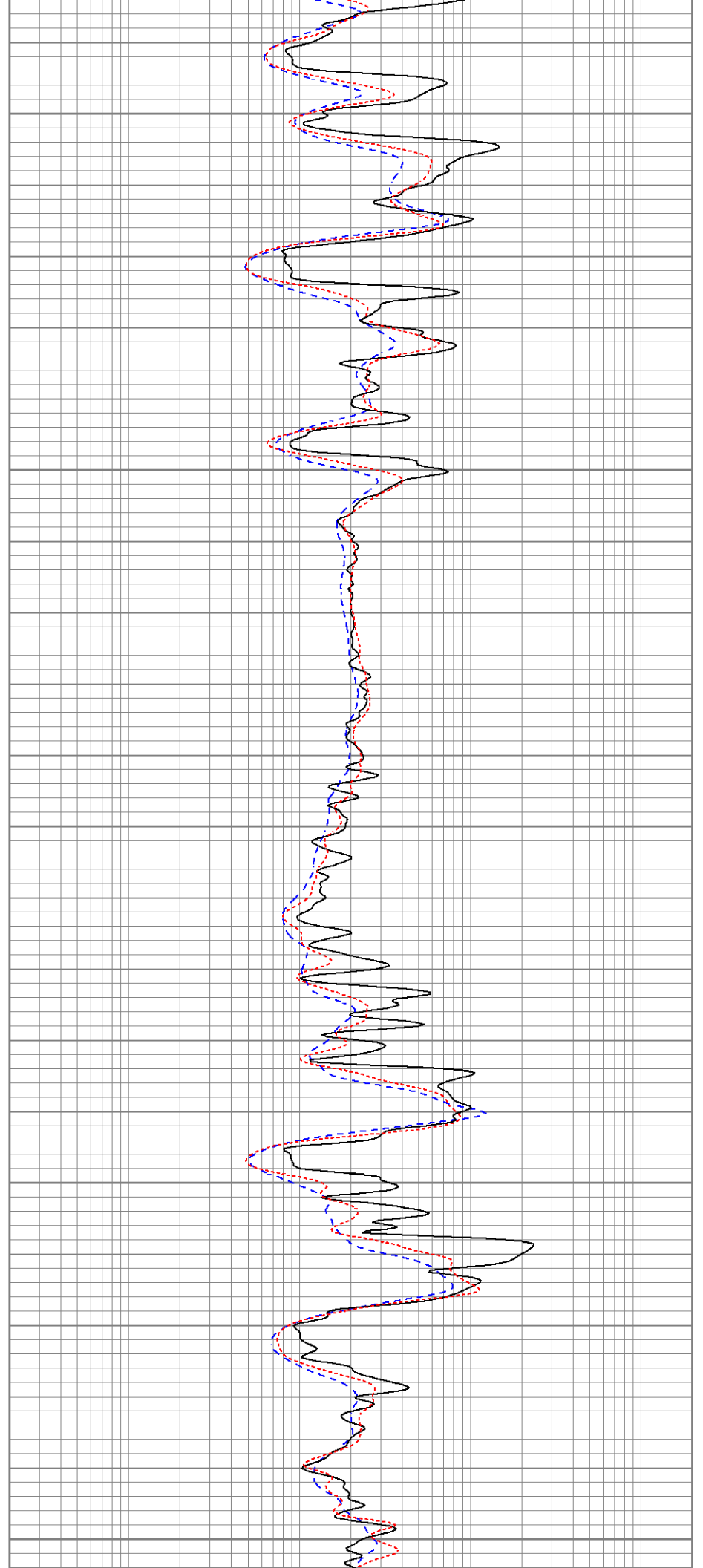
4150

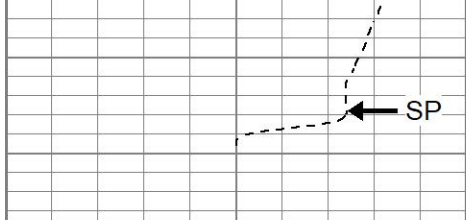
4200

4250

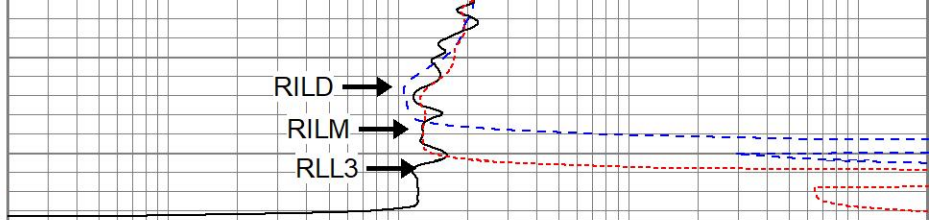
4300

GR





LTD 4324



0	GR (GAPI)	150
-100	SP (mV)	100

0.2	RILD (Ohm-m)	2000
0.2	RLL3 (Ohm-m)	2000
0.2	RILM (Ohm-m)	2000

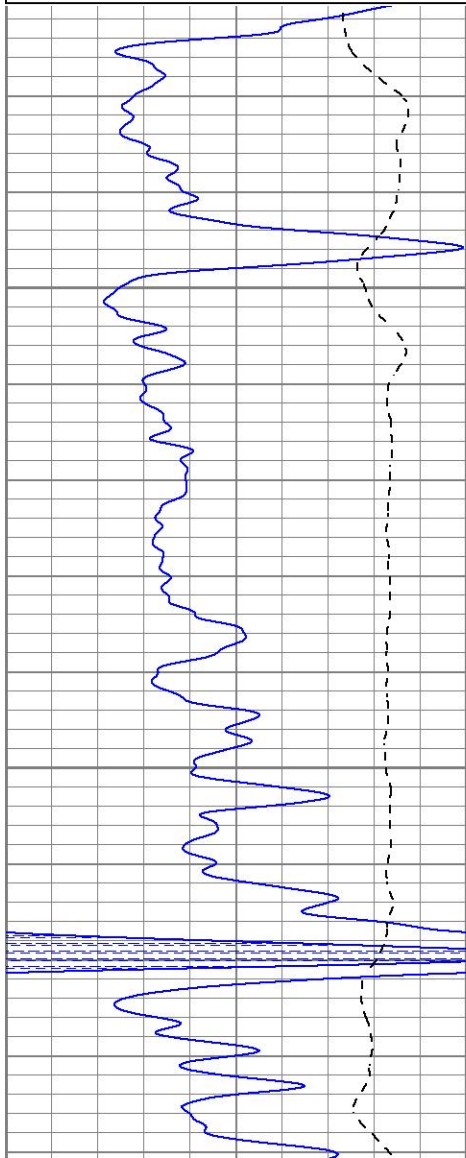


# REPEAT SECTION

Database File tccox#3-35oh.db  
 Dataset Pathname pass3.1  
 Presentation Format kdil  
 Dataset Creation Mon Apr 25 12:34:34 2022  
 Charted by Depth in Feet scaled 1:240

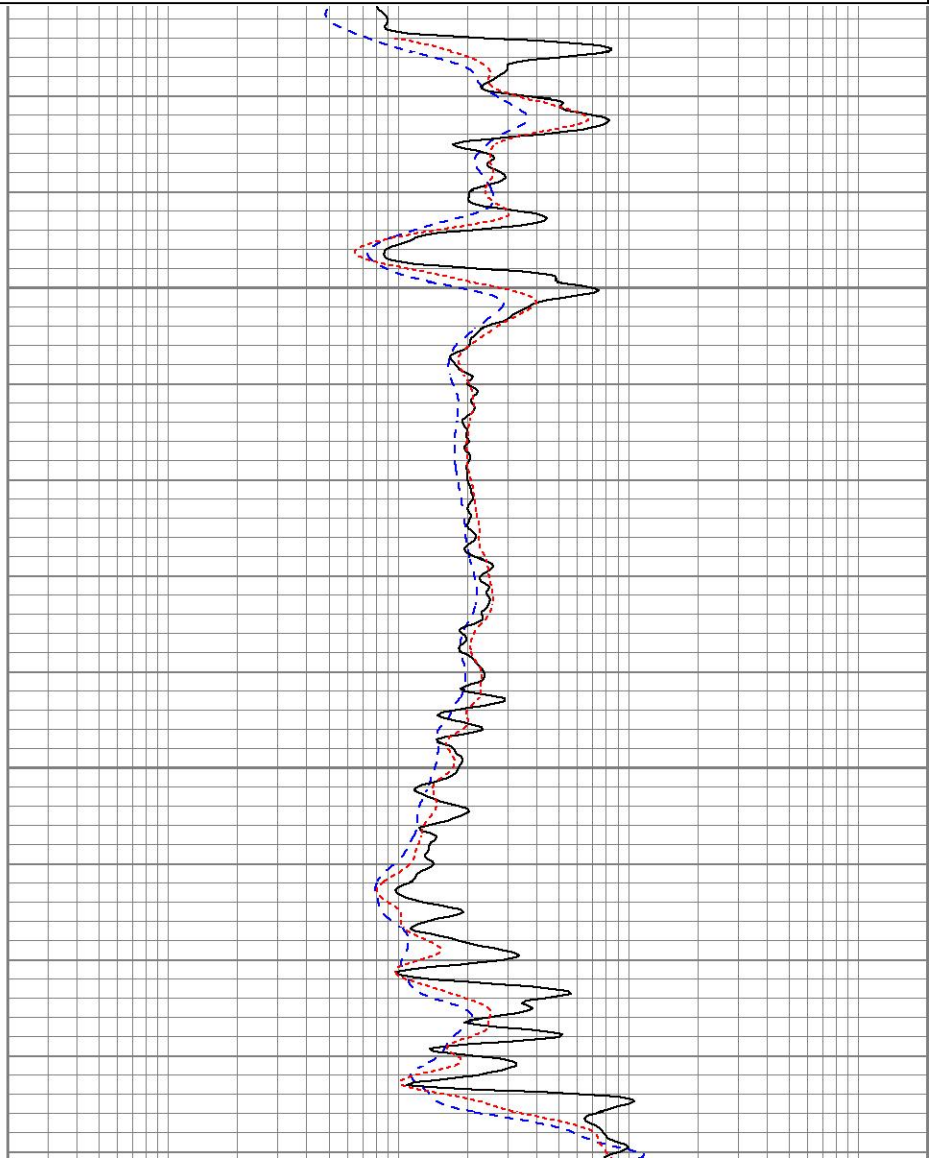
0	GR (GAPI)	150
-100	SP (mV)	100

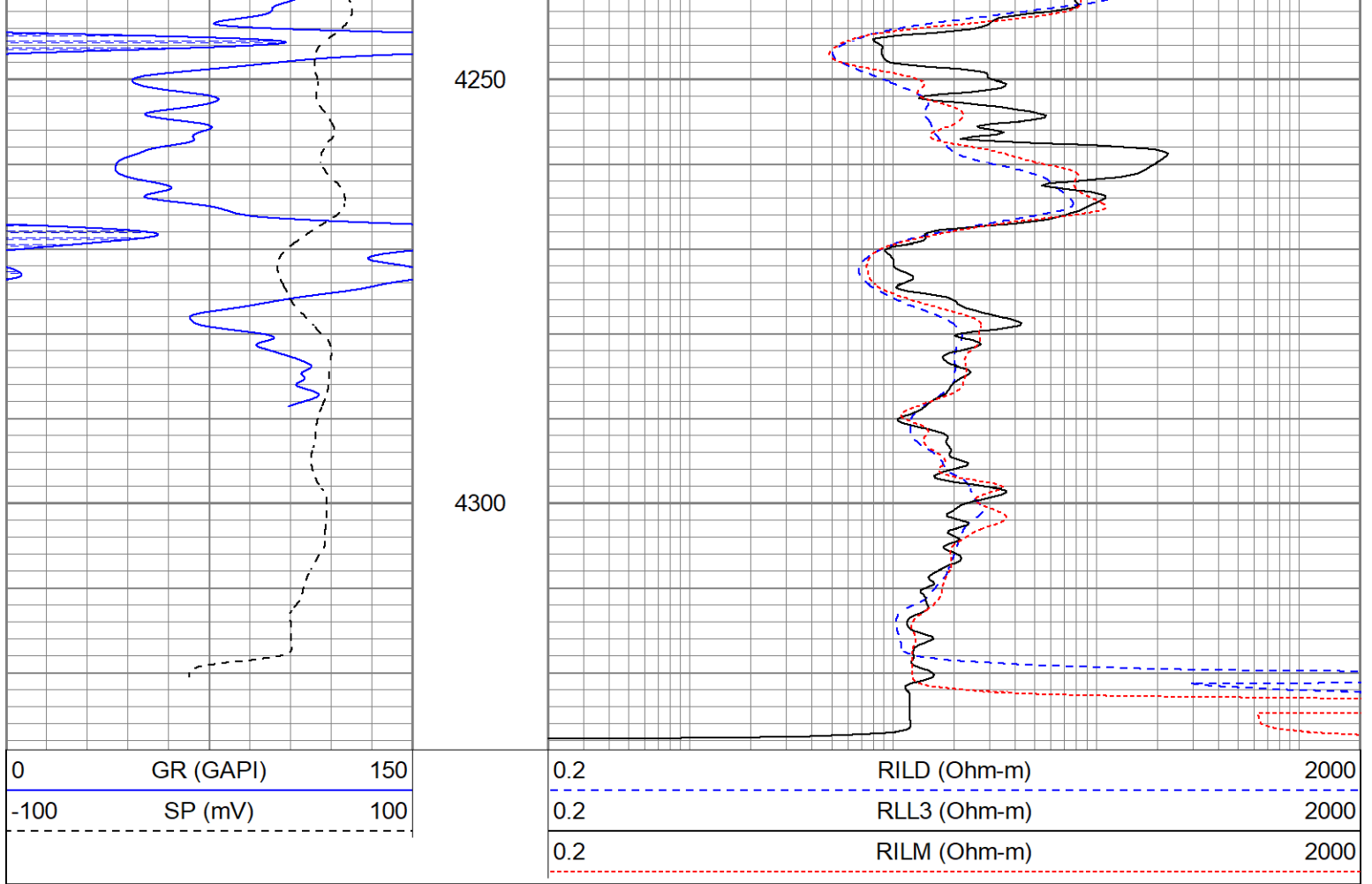
0.2	RILD (Ohm-m)	2000
0.2	RLL3 (Ohm-m)	2000
0.2	RILM (Ohm-m)	2000



4150

4200





Calibration Report

Database File tccox#3-35oh.db  
 Dataset Pathname pass3.1  
 Dataset Creation Mon Apr 25 12:34:34 2022

Dual Induction Calibration Report

Serial-Model: 1842-ADM  
 Surface Cal Performed: Mon Sep 20 22:00:42 2021  
 Downhole Cal Performed: Mon Sep 20 22:00:24 2021  
 After Survey Verification Performed: Mon Sep 20 22:05:52 2021

Surface Calibration

Loop:	Readings			References			Results	
	Air	Loop	V	Air	Loop	mmho/m	m	b
Deep	0.018	0.672	V	0.000	350.000	mmho/m	535.475	-9.896
Medium	0.003	0.769	V	0.000	400.000	mmho/m	522.607	-1.745
Internal:	Zero	Cal		Zero	Cal		m	b
Deep	0.018	0.672	V	0.000	350.000	mmho/m	535.240	-9.549
Medium	0.003	0.768	V	0.000	550.000	mmho/m	718.637	-2.088

Downhole Calibration

Internal:	Readings			References			Results	
	Zero	Cal	mmho/m	Zero	Cal	mmho/m	m	b
Deep	-0.219	349.905	mmho/m	-0.343	349.810	mmho/m	1.000	-3.124
Medium	-0.118	399.722	mmho/m	-0.226	399.745	mmho/m	1.000	-3.108

Shallow 2.536 0.025 V 500.000 2.000 Ohm-m 180.330 -1.504

After Survey Verification

Internal:	Readings			Targets			Results	
	Zero	Cal		Zero	Cal		m'	b'
Deep	0.000	0.000	mmho/m	-0.219	349.905	mmho/m	1.000	-3.124
Medium	0.000	0.000	mmho/m	-0.118	399.722	mmho/m	1.000	-3.108
Shallow	0.000	0.000	Ohm-m	500.000	2.000	Ohm-m	1.000	0.000

Admyr Lithodensity Calibration Report

Serial-Model: 1C-C  
 Source: Blue2  
 Master Calibration Performed: Tue Oct 20 08:37:42 2020

Master Calibration

	Density		Far Detector	Near Detector	
Magnesium	1.670	g/cc	6640.15	4353.97	cps
Aluminium	2.640	g/cc	1651.98	2729.31	cps
Aluminium+Sleeve	2.640	g/cc	1651.98	2729.31	cps
Spine Angle = 71.44			Density/Spine Ratio = 0.661		
	PE		NLITH	NHARD	
Magnesium	1.900	barn	1410.00	1000.00	cps
Aluminium	2.400	barn	1101.00	918.50	cps
Aluminium+Sleeve	5.000	barn	656.00	951.00	cps
M = 0.448			B = -0.112	R = 0.999	
	Size		Reading		
Small Ring	8.30	in	8.61	V	
Large Ring	14.30	in	12.40	V	

Neutron Calibration Report

Serial Number: AD5139  
 Tool Model: ADMY5139  
 Performed: (Not Performed)

Calibrator Value: 1 NAPI  
 Calibrator Reading: 1 cps  
 Sensitivity: 1 NAPI/cps

Temperature Calibration Report

Serial Number: WithMC  
 Tool Model: WMC  
 Performed: Fri Apr 19 12:15:04 2019

	Reference	Reading
Low Reference:	0.00 degF	0.00 degF
High Reference:	1.00 degF	1.00 degF

Gain: 1.00  
 Offset: 0.00  
 Delta Spacing: 1

Inclinometer Calibration Report

Performed:	Wed May 5 19:20:48 2021				
	Low Read.	High Read.	Low Ref.	High Ref.	
X Accelerometer	205.00	1843.00	-1.00	1.00	gee
Y Accelerometer	205.00	1843.00	-1.00	1.00	gee
Z Accelerometer					gee

Gamma Ray Calibration Report

Serial Number:	WithMC	
Tool Model:	WMC	
Performed:	Wed May 5 19:21:08 2021	
Calibrator Value:	1.0	GAPI
Background Reading:	0.0	cps
Calibrator Reading:	1.0	cps
Sensitivity:	1.0000	GAPI/cps