

2 INCH

COMPANY WELL FIELD/BLOCK COUNTY STATE	MERIT ENERGY COMPANY, LLC KATY JACKSON 1-7 SEVEN MILE FINNEY KANSAS
Permanent Datum Log measured from Drilling measured from Date Run No. Depth - Driller Depth - Logger Bottom - Logged Interval Top - Logged Interval Casing - Driller Casing - Logger Bit Size Type Fluid in Hole Density PH Source of Sample Rm @ Meas. Temperature Rmf @ Meas. Temperature Rmc @ Meas. Temperature Source Rmf Rm @ BHT Time Since Circulation Time on Bottom Max. Rec. Temperature Equipment Recorded By Witnessed By	COMPANY WELL FIELD/BLOCK COUNTY STATE API No. 15055225570100 Location 549' FNL & 181' FEL SE NE NE NE Sect. 7 Twp. 23S Rge. 32W Elev. 2857.9 ft Elev. 2868.9 ft Elev. 2857.9 ft ONE 5000.0 ft 5000.0 ft 4987.0 ft 1811.0 ft 8.625 in @ 1813.0 ft 1811.0 ft 7.875 in Water Based Mud 9.4 ppg 48.00 s/qt 11.00 pH 5.2 optm MUD PIT 1.45 ohmm @ 56.10 degF 1.73 ohmm @ 56.10 degF 1.10 ohmm @ 56.10 degF CALC 0.74 ohmm @ 117.0 degF 06.30 hr 08-Apr-22 01:00 117.00 degF @ 5000.0 ft 12128583 K. BIJERGA M. LANGE
Other Services: DSNT-SDLT BSAT	FINNEY SEVEN MILE FINNEY KANSAS

Fold here

Sales Order Number: 907776086		API No.: 15055225570100		PGM Version: WL INSITE R6.4.20 (Build 2)			
CHANGE IN MUD TYPE OR ADDITIONAL SAMPLE			RESISTIVITY SCALE CHANGES				
Date	Sample No.		Type Log	Depth	Scale Up Hole	Scale Down Hole	
Depth-Driller							
Type Fluid in Hole							
Density	Viscosity						
Ph	Fluid Loss						
Source of Sample			RESISTIVITY EQUIPMENT DATA				
Rm @ Meas. Temp	@	@	Run No.	Tool Type & No.	Pad Type	Tool Pos.	Other
Rmf @ Meas. Temp.	@	@	ONE	ACRT	NONE	CENT	N/A
Rmc @ Meas. Temp.	@	@		S - 10947895			
Source Rmf	Rmc						
Rm @ BHT	@	@					
Rmf @ BHT	@	@					
Rmc @ BHT	@	@					
EQUIPMENT DATA							
GAMMA		ACOUSTIC		DENSITY		NEUTRON	
Run No.	ONE	Run No.		Run No.		Run No.	
Serial No.	11958947	Serial No.		Serial No.		Serial No.	
Model No.	GTET	Model No.		Model No.		Model No.	
Diameter	3.625"	No. of Cent.		Diameter		Diameter	
Detector Model No.	GTET	Spacing		Log Type		Log Type	
Type	SCINT			Source Type		Source Type	
Length	8"	LSA [Y/N]		Serial No.		Serial No.	
Distance to Source	10'	FWDA [Y/N]		Strength		Strength	
LOGGING DATA							

GENERAL			GAMMA		ACOUSTIC		DENSITY		NEUTRON		
Run No.	Depth		Speed	Scale		Scale		Matrix	Scale		Matrix
	From	To	ft/min	L	R	L	R		L	R	
ONE	5000'	1811'	REC	0 gapi	150 gapi						

DIRECTIONAL INFORMATION

Maximum Deviation @ KOP @

Remarks: FIRST LOG ON WELL, POSITIVE DEPTH CORRECTION APPLIED
 ANNULAR HOLE VOLUME CALCULATED FOR 5.5 INCH CASING
 LOGGING INTERVALS AND SERVICES ARE AS PER CUSTOMER REQUEST
 TOOLS RAN IN COMBINATION AS PER TOOLSTRING DIAGRAM
 CHLORIDES REPORTED AT 2,900

CREW: C. HERRERA, B. EZEKWU

*****THANK YOU FOR CHOOSING HALLIBURTON ENERGY SERVICES*****

HALLIBURTON DOES NOT GUARANTEE THE ACCURACY OF ANY INTERPRETATION OF THE LOG DATA, CONVERSION OF LOG DATA TO PHYSICAL ROCK PARAMETERS OR RECOMMENDATIONS WHICH MAY BE GIVEN BY HALLIBURTON PERSONNEL OR WHICH APPEAR ON THE LOG OR IN ANY OTHER FORM. ANY USER OF SUCH DATA, INTERPRETATIONS, CONVERSIONS, OR RECOMMENDATIONS AGREES THAT HALLIBURTON IS NOT RESPONSIBLE EXCEPT WHERE DUE TO GROSS NEGLIGENCE OR WILLFUL MISCONDUCT, FOR ANY LOSS, DAMAGES, OR EXPENSES RESULTING FROM THE USE THEREOF.

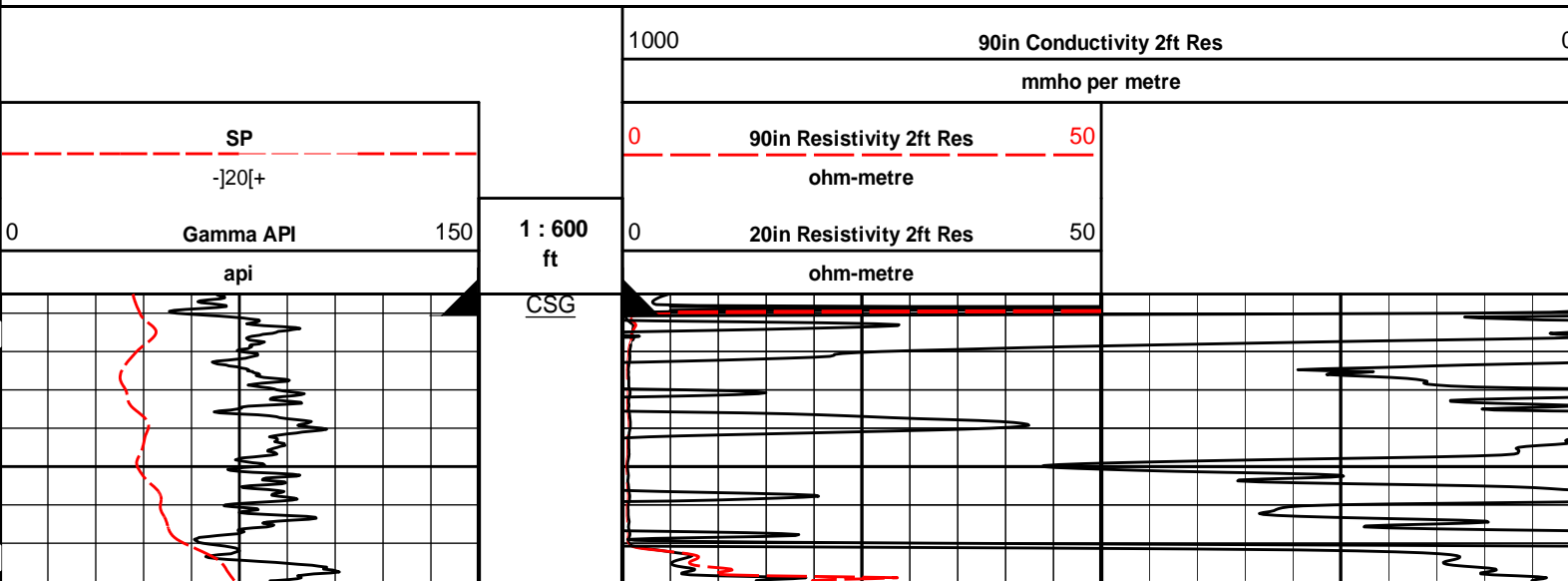
HALLIBURTON

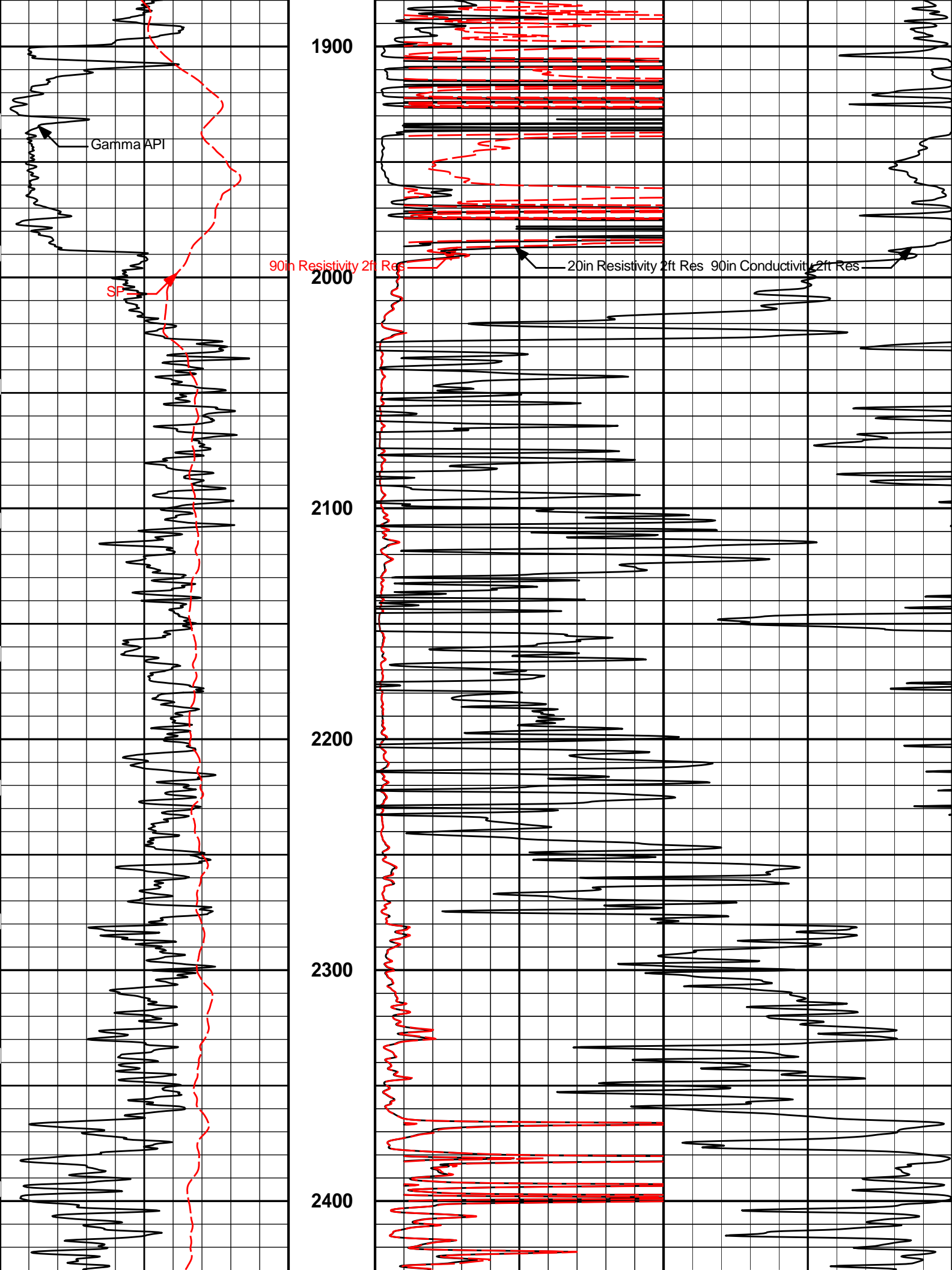


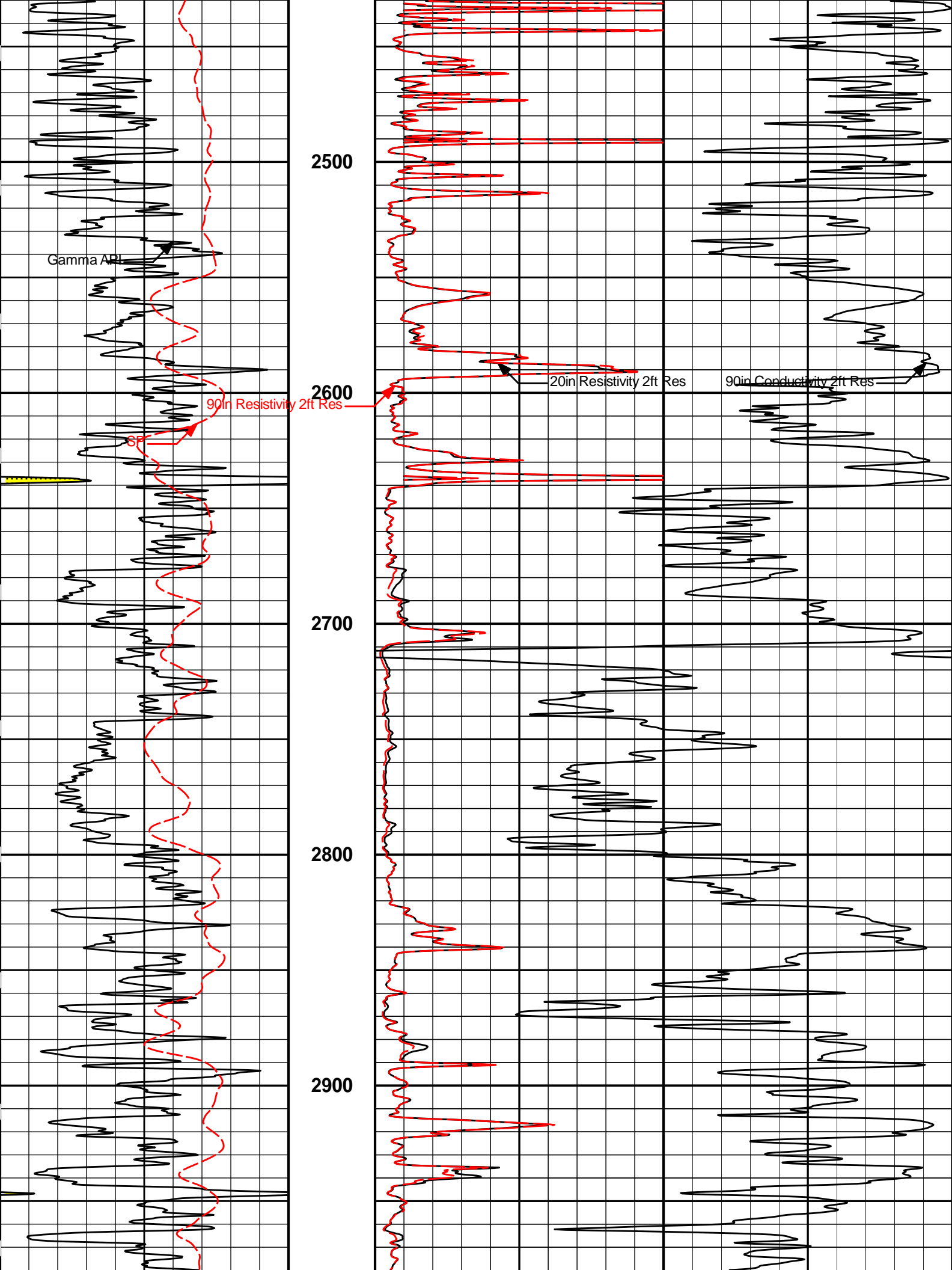
Plot Time: 08-Apr-22 02:36:45
 Plot Range: 1805 ft to 5006.67 ft
 Data: 04_07_MERITWell Based\DAQ-0001-004\
 Plot File: \\-LOCAL-104_07_MERIT\0001 RWCH-GTET-DSNT-SDLT-BSAT-ACRT\ACRT2\ACRT_2_main

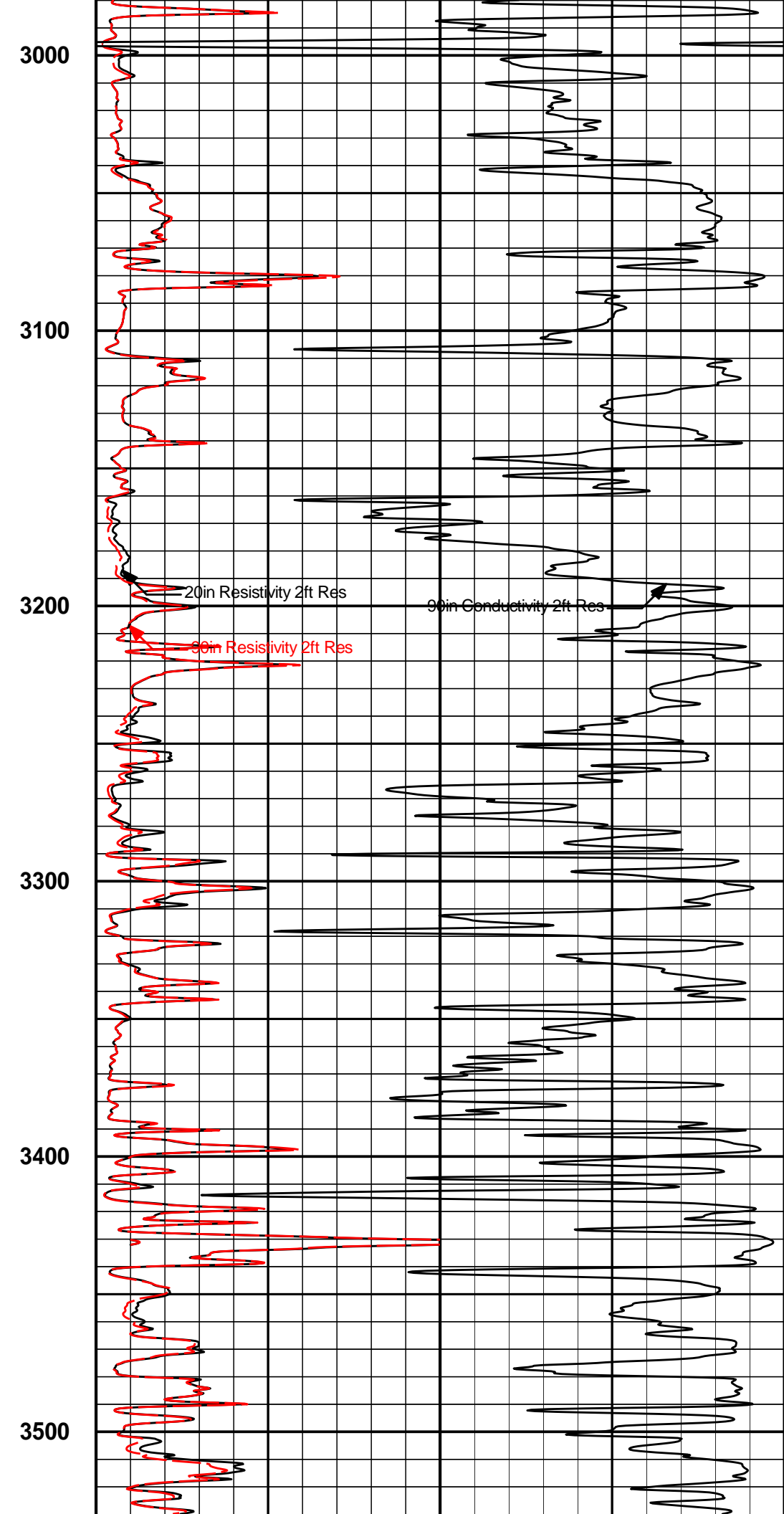
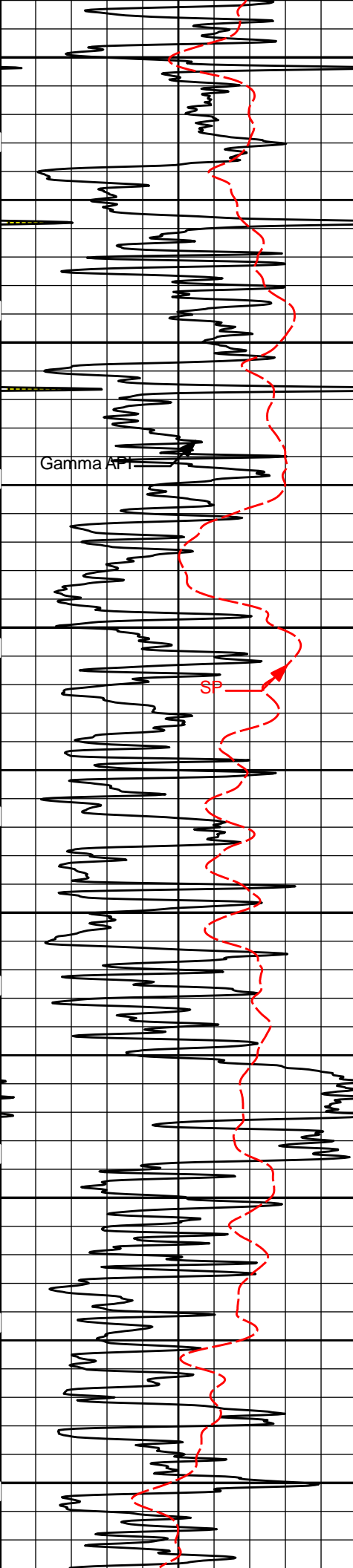
2 INCH MAIN LOG

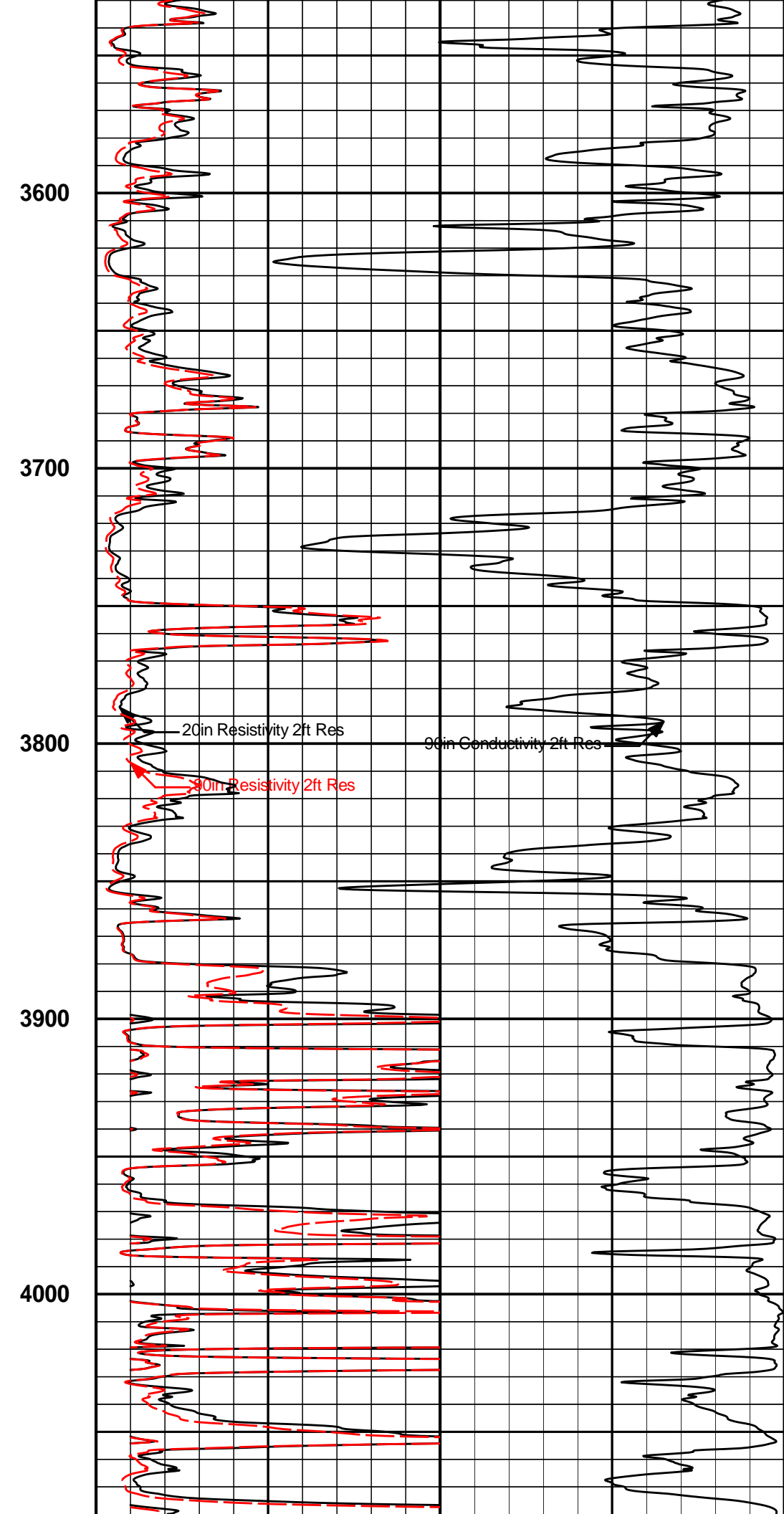
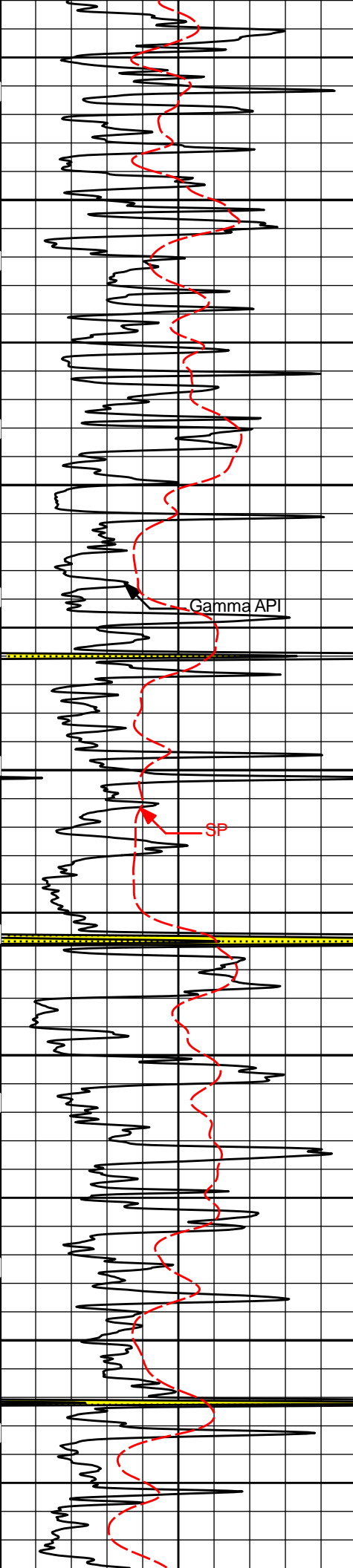
2 INCH MAIN LOG

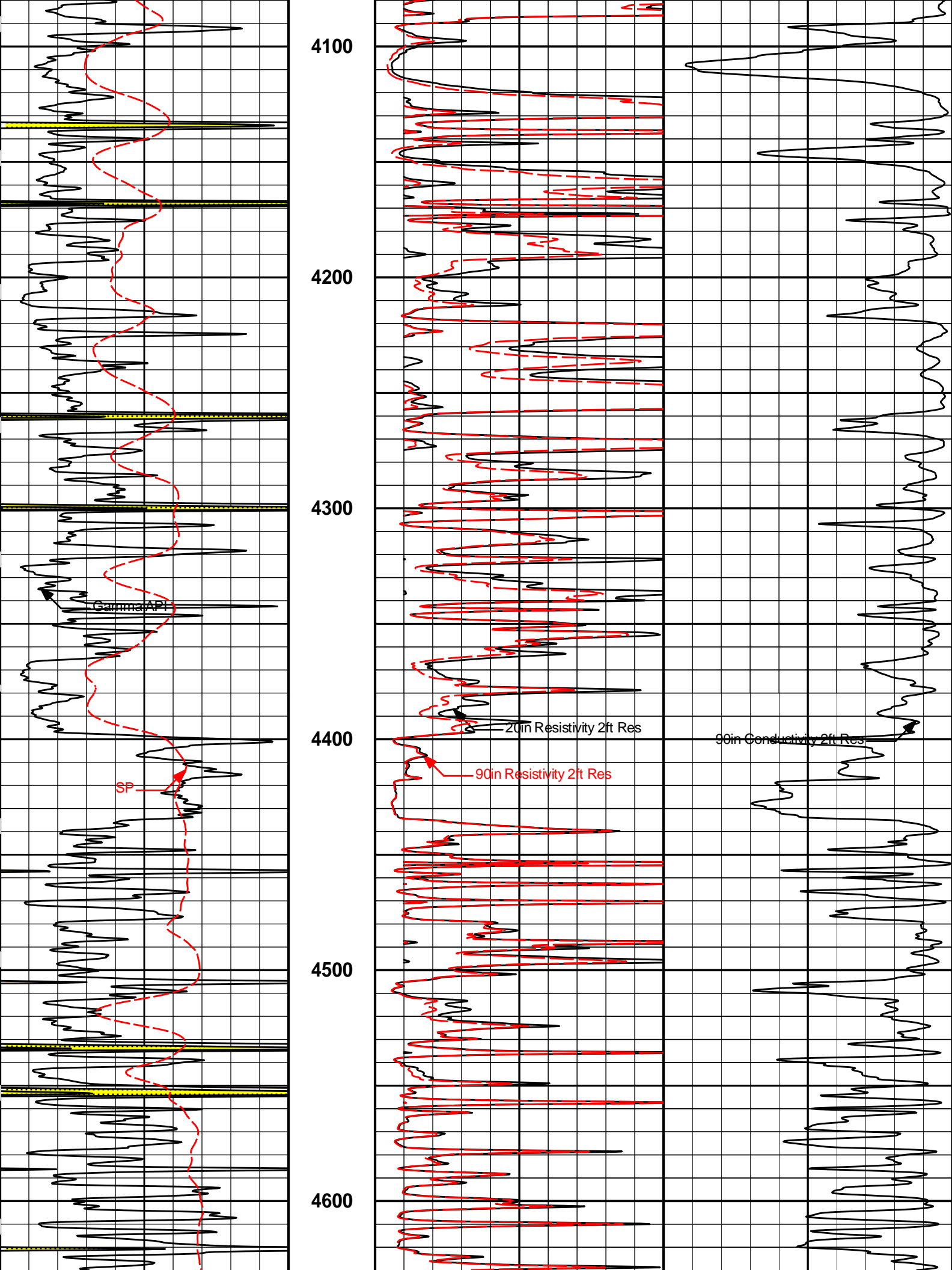


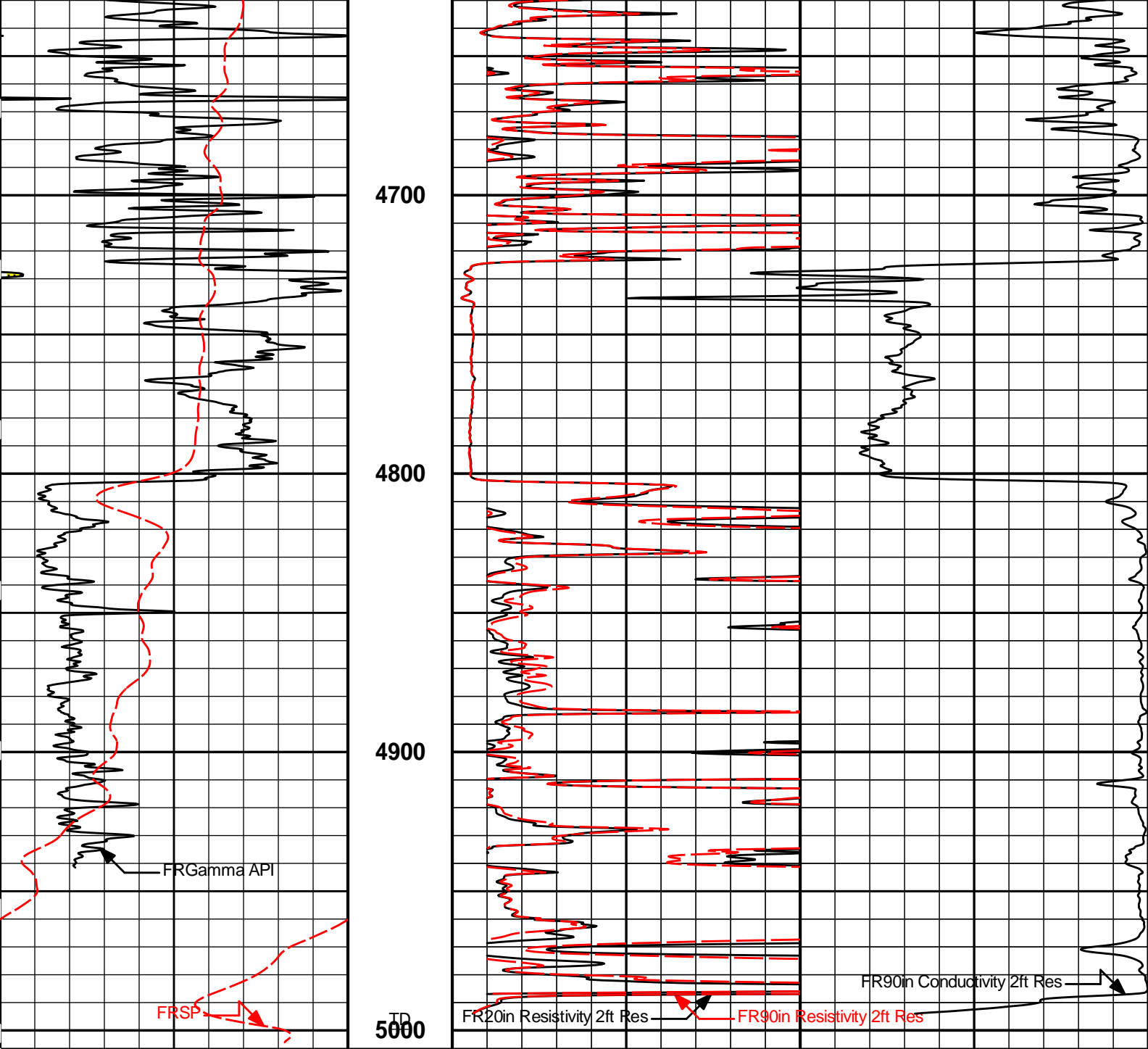












0	Gamma API	150
	api	
	SP	
	-]20[+	

1 : 600
ft

0	20in Resistivity 2ft Res	50
	ohm-metre	
0	90in Resistivity 2ft Res	50
	ohm-metre	

1000	90in Conductivity 2ft Res	0
	mmho per metre	

HALLIBURTON

Plot Time: 08-Apr-22 02:36:47
 Plot Range: 1805 ft to 5006.67 ft
 Data: 04_07_MERITWell Based\DAQ-0001-004\
 Plot File: \\-LOCAL-104_07_MERIT0001 RWCH-GTET-DSNT-SDLT-BSAT-ACRT\ACRT2\ACRT_2_main

2 INCH MAIN LOG

2 INCH MAIN LOG

COMPANY	MERIT ENERGY COMPANY, LLC		
WELL	KATY JACKSON 1-7		
FIELD	SEVEN MILE		
COUNTY	FINNEY	STATE	KANSAS
HALLIBURTON		ARRAY COMPENSATED TRUE RESISTIVITY 2 INCH	