



**COMPENSATED
DENSITY/NEUTRON
LOG**

Company RAYMOND OIL COMPANY, INC.
 Well FRUSHER FARMS #1
 Field WILDCAT
 County HODGEMAN State KANSAS

Location: API #: 15-1083-22004-0000
 SE - NE - SW - NW
 1729' FNL & 1236' FWL
 SEC 10 TWP 21S RGE 23W
 Permanent Datum GROUND LEVEL Elevation 2312
 Log Measured From KELLY BUSHING 5' A.G.L.
 Drilling Measured From KELLY BUSHING
 Other Services DILMEL
 Elevation K.B. 2317
 D.F. 2315
 G.L. 2312

Date	5/20/22	
Run Number	ONE	
Depth Driller	4620	
Depth Logger	4620	
Bottom Logged Interval	4596	
Top Log Interval	3500	
Casing Driller	8 5/8"@261'	
Casing Logger	261	
Bit Size	7 7/8"	
Type Fluid in Hole	CHEMICAL MUD	CHLORIDES: 8,300 PPM
Density / Viscosity	9.6/44	
pH / Fluid Loss	8.0/13.2	
Source of Sample	FLOWLINE	
Rm @ Meas. Temp	.650@75F	
Rmf @ Meas. Temp	.488@75F	
Rmc @ Meas. Temp	.780@75F	
Source of Rmf / Rmc	MEASURED	
Rm @ BHT	.400@122F	
Time Circulation Stopped	2 HOURS	
Time Logger on Bottom	9:30 A.M.	
Maximum Recorded Temperature	122F	
Equipment Number	8916	
Location	HAYS, KANSAS	
Recorded By	JEFF LUEBBERS	
Witnessed By	KIM SHOEMAKER	

<<< Fold Here >>>

All interpretations are opinions based on inferences from electrical or other measurements and we cannot and do not guarantee the accuracy or correctness of any interpretation, and we shall not, except in the case of gross or willful negligence on our part, be liable or responsible for any loss, costs, damages, or expenses incurred or sustained by anyone resulting from any interpretation made by any of our officers, agents or employees. These interpretations are also subject to our general terms and conditions set out in our current Price Schedule.

Comments

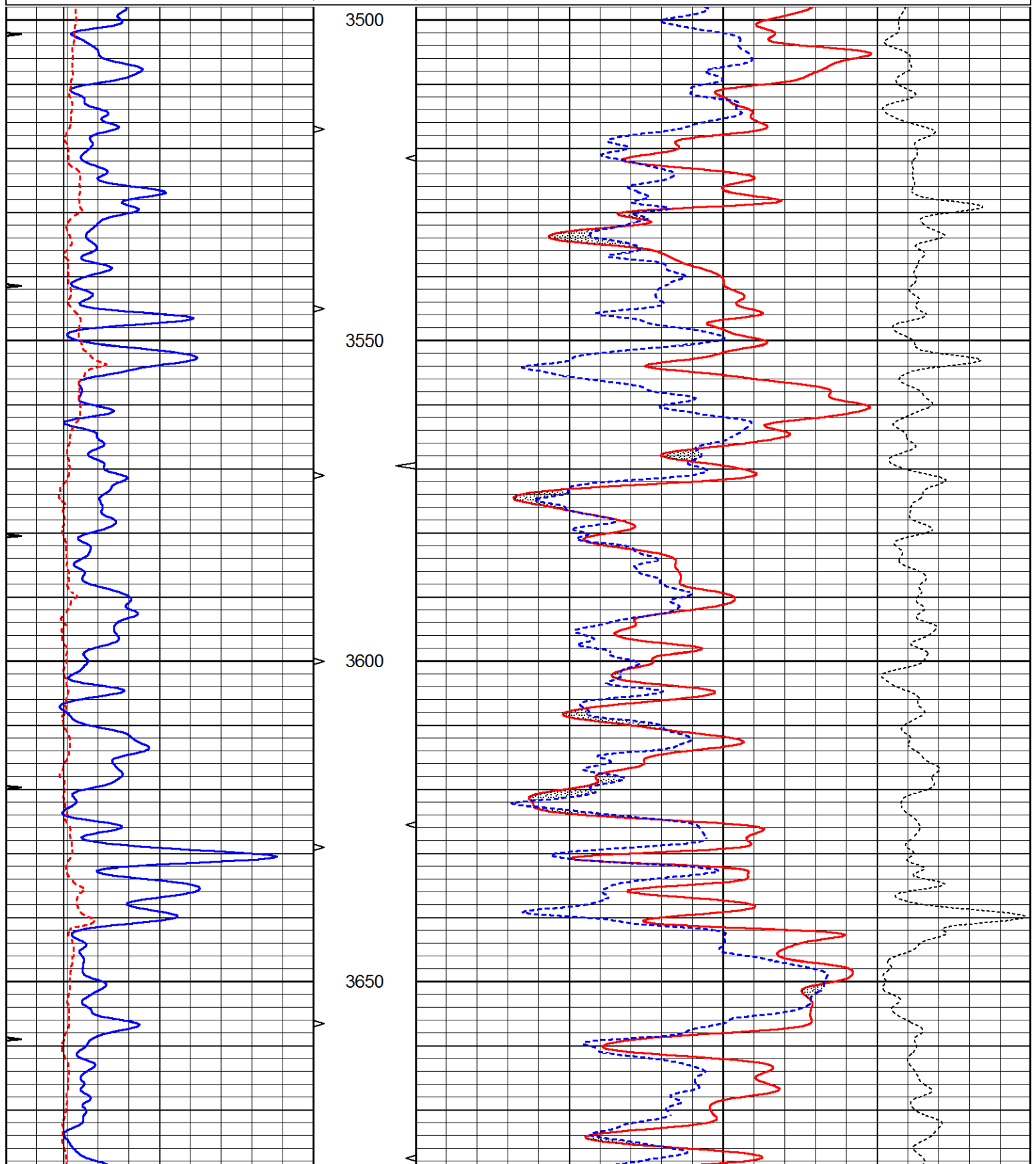
THANK YOU FOR USING ELI WIRELINE, HAYS, KS. (785) 628-6395
 DIRECTIONS:
 NESS CITY, KS., 11S. ON HWY 283 TO "RD. X", 3 1/2E., S. INTO

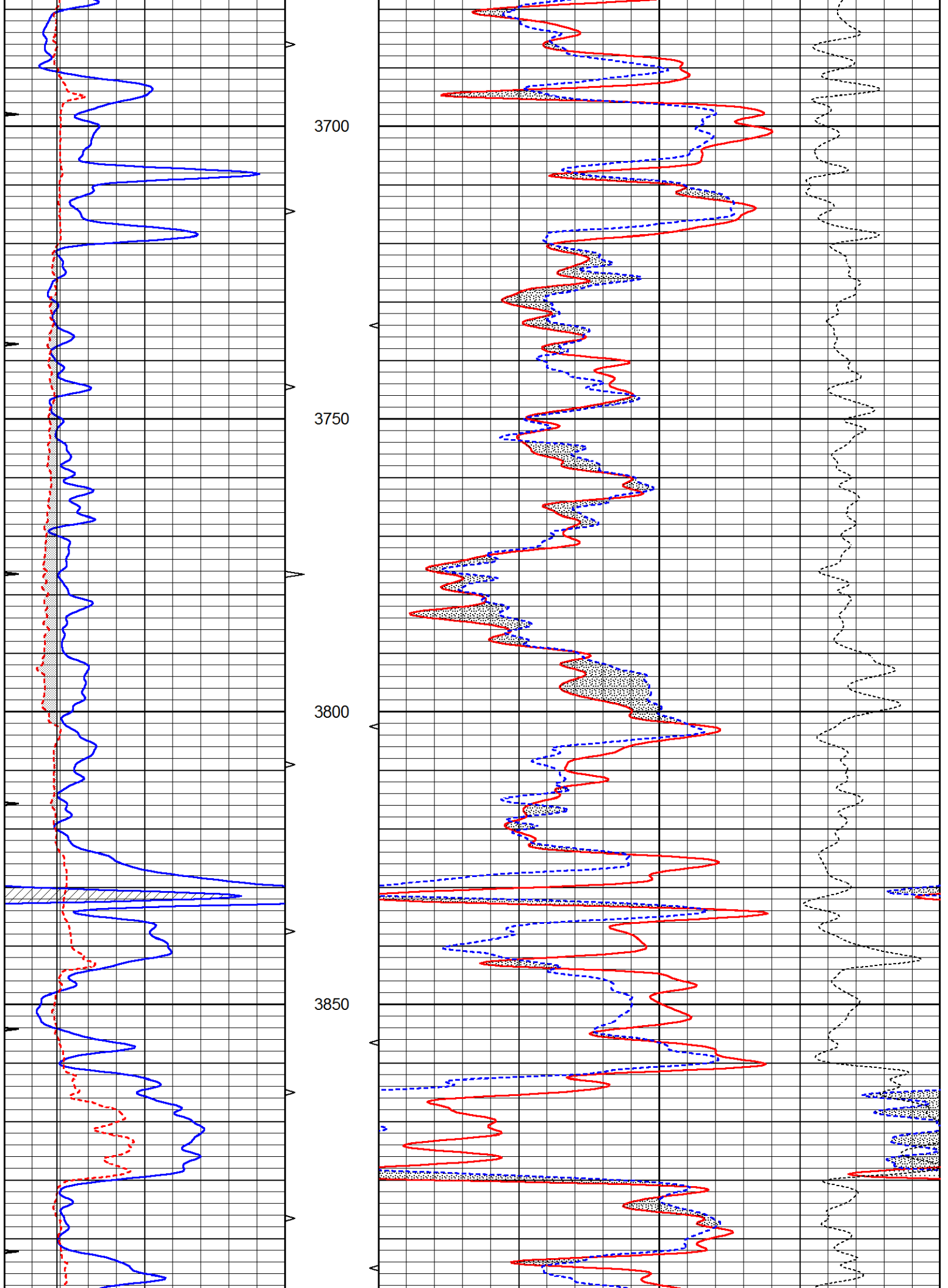


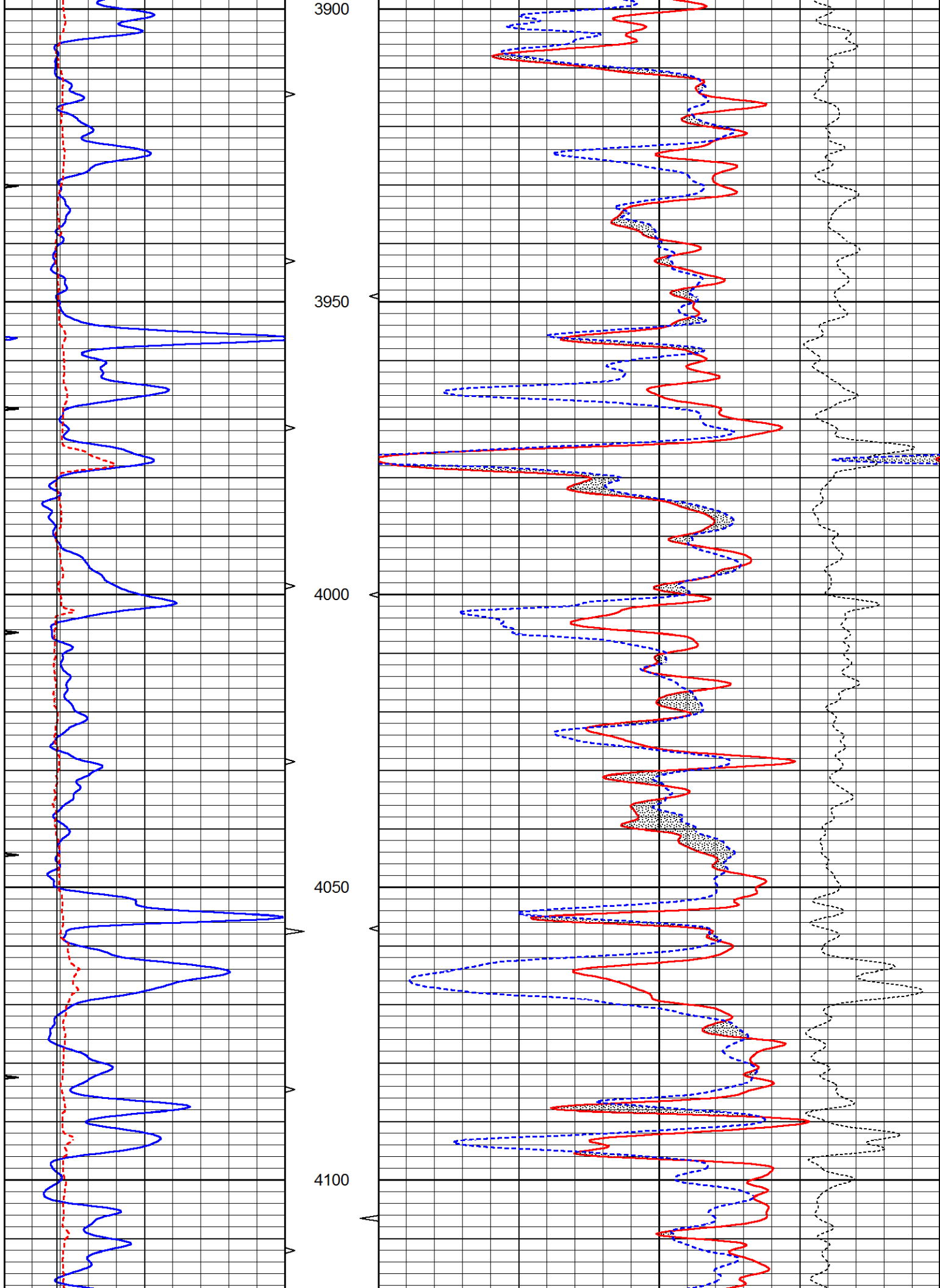
MAIN SECTION

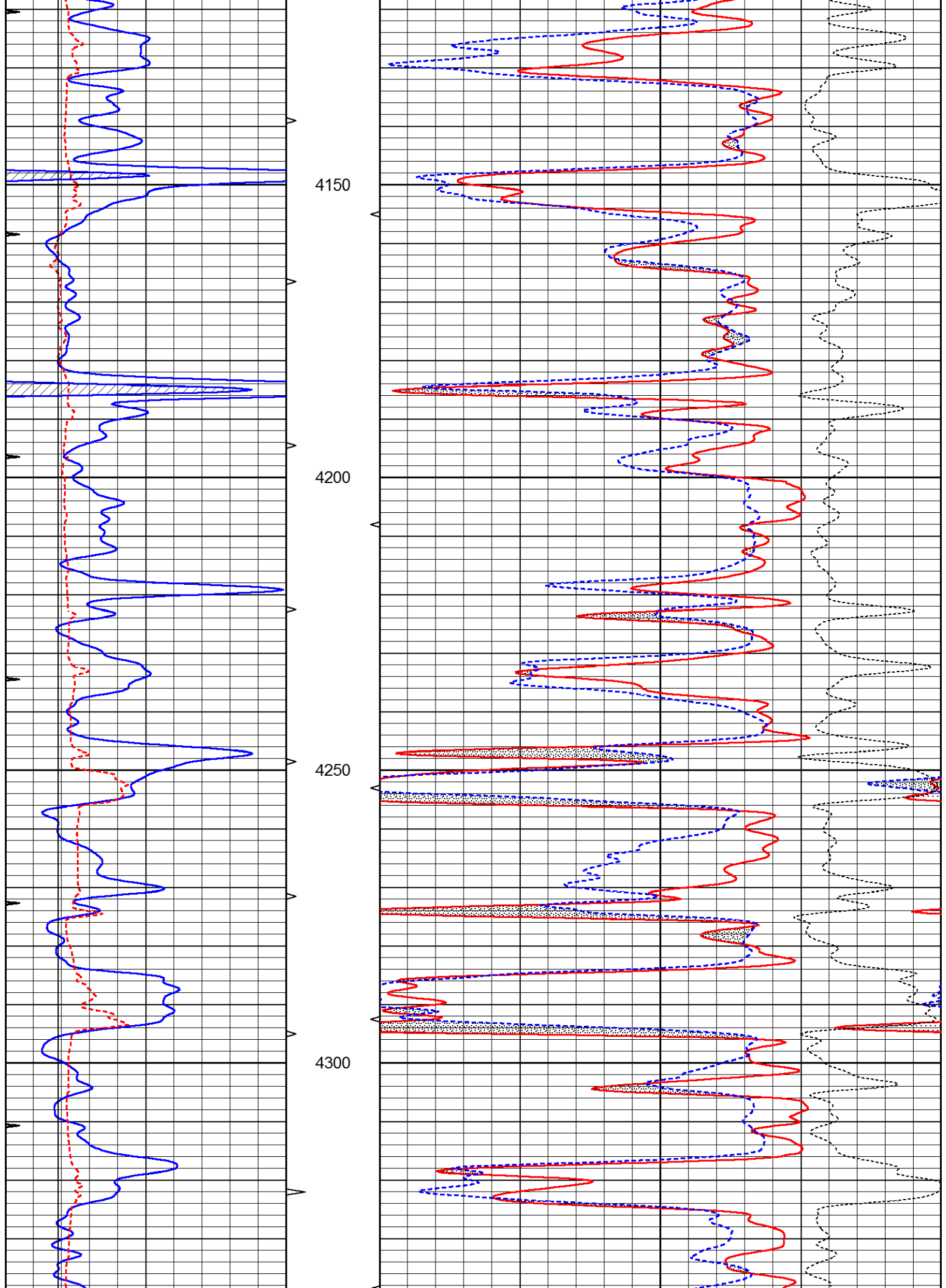
Database File 6552ddn.db
 Dataset Pathname pass3.1M
 Presentation Format den_neu
 Dataset Creation Fri May 20 11:29:13 2022
 Charted by Depth in Feet scaled 1:240

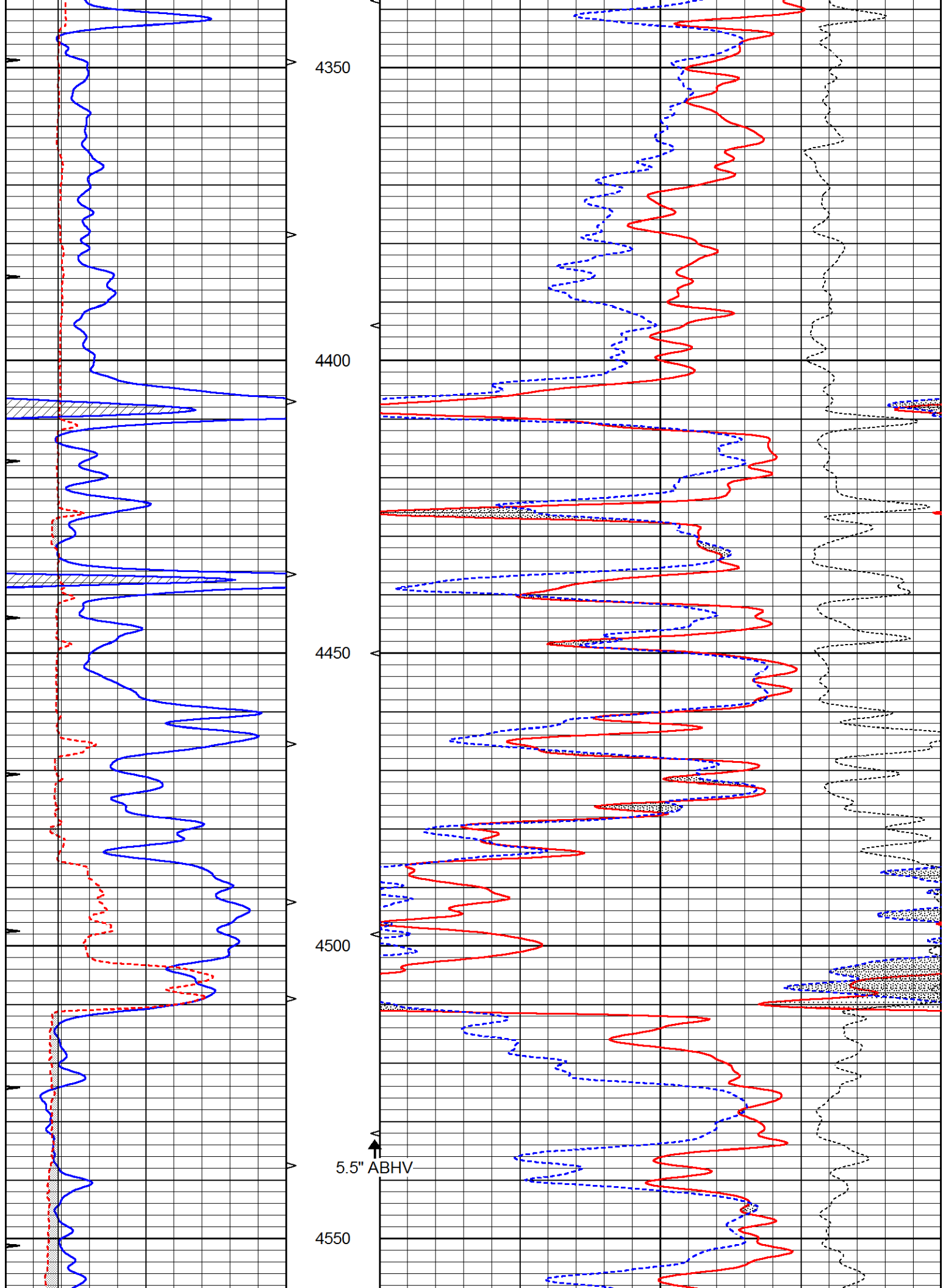
0	GAMMA RAY (GAPI)	150	ABHV	30	COMPENSATED DENSITY (pu)	-10
6	CALIPER (in)	16	10 (ft3) 0	30	COMPENSATED NEUTRON (pu)	-10
0	MINMK	20	TBHV		-0.25 CORRECTION (g/cc)	0.25
			0 (ft3) 10			

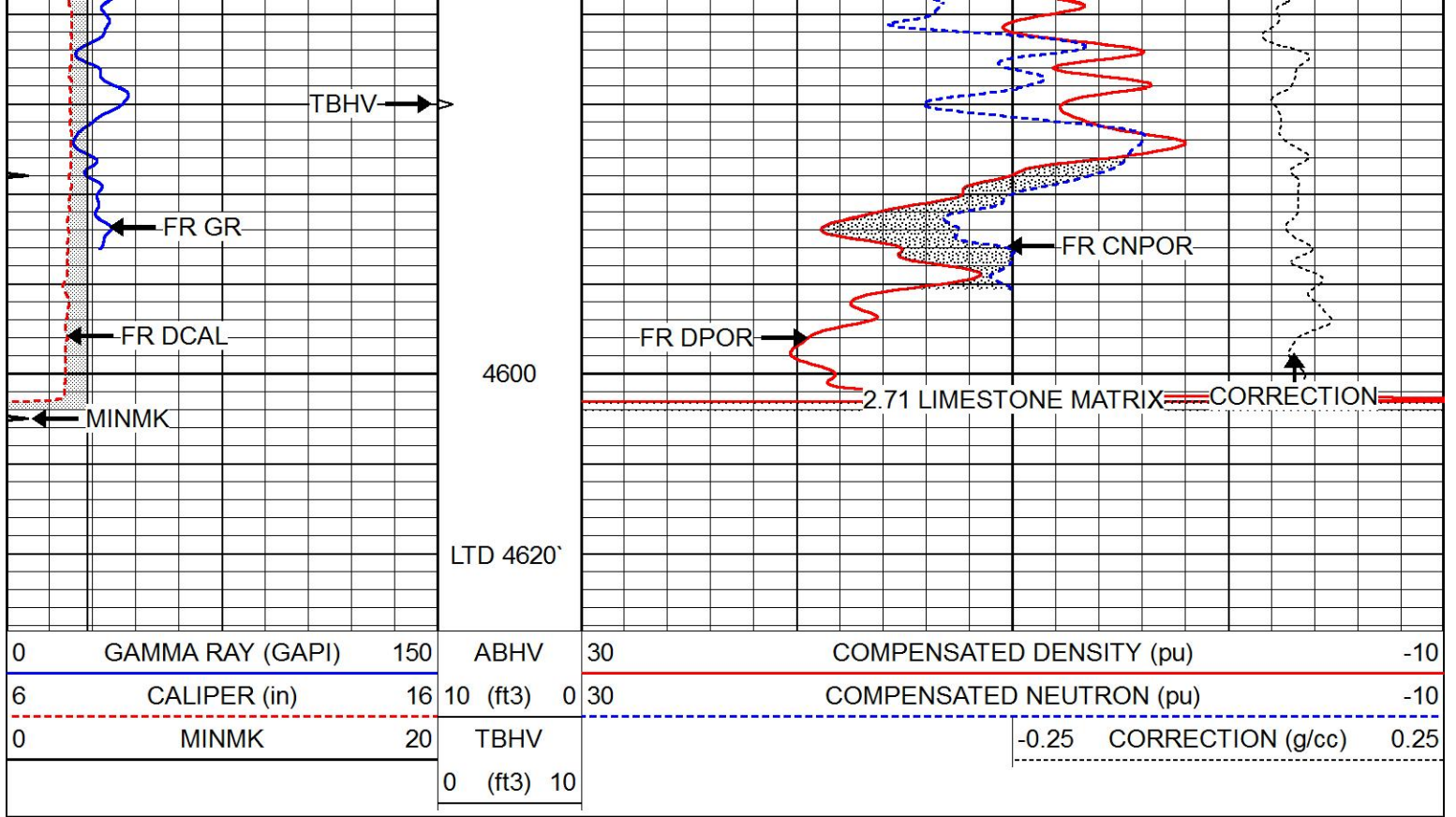








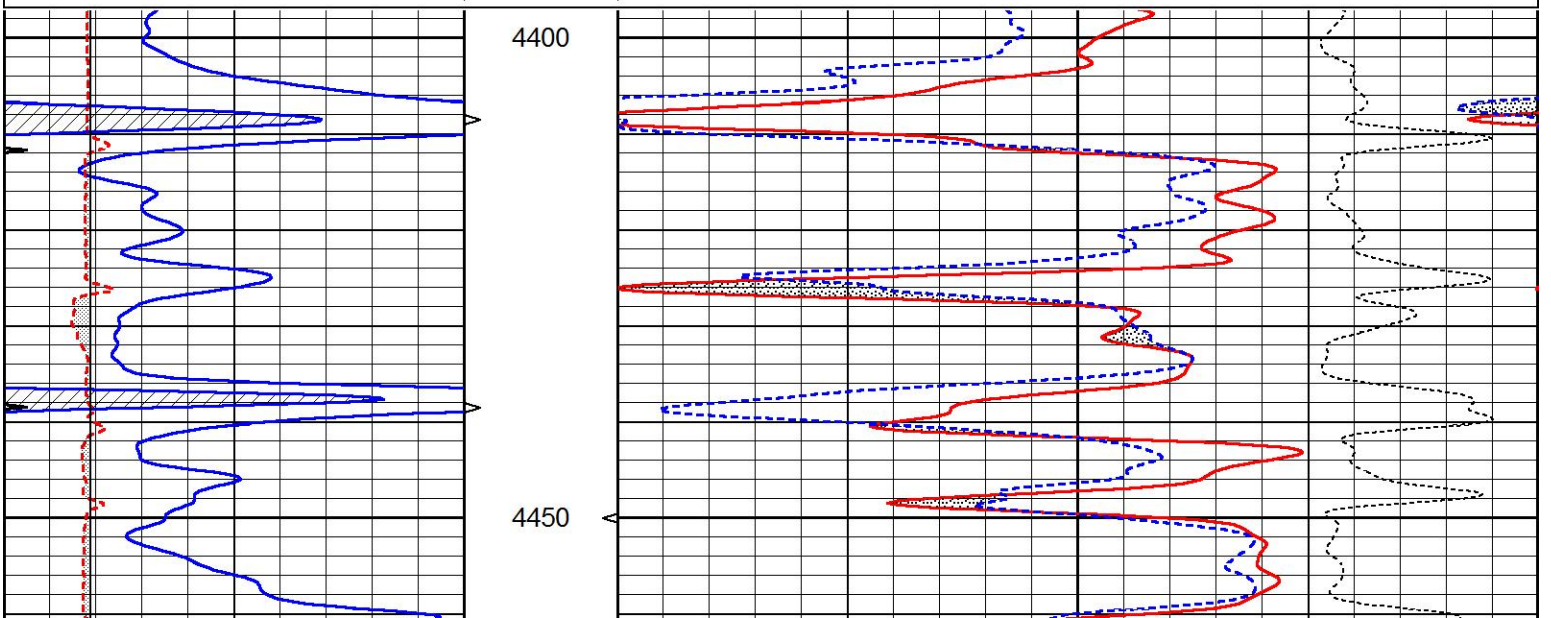


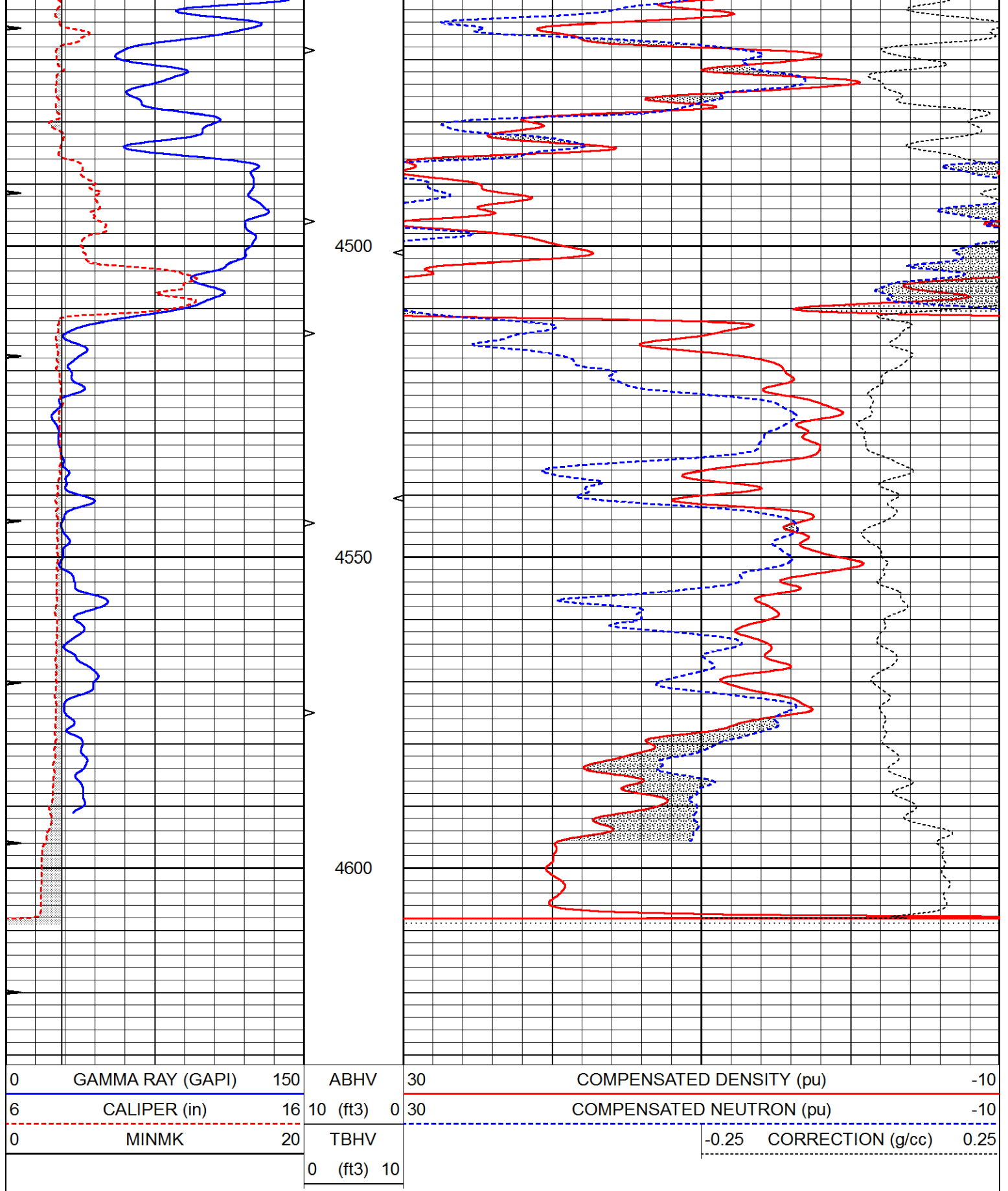


REPEAT SECTION

Database File 6552ddn.db
 Dataset Pathname pass2.1R
 Presentation Format den_neu
 Dataset Creation Fri May 20 11:32:27 2022
 Charted by Depth in Feet scaled 1:240

0	GAMMA RAY (GAPI)	150	ABHV	30	COMPENSATED DENSITY (pu)	-10
6	CALIPER (in)	16	10 (ft3)	0 30	COMPENSATED NEUTRON (pu)	-10
0	MINMK	20	TBHV		-0.25 CORRECTION (g/cc)	0.25
			0 (ft3)	10		





Calibration Report

Database File 6552ddn.db
 Dataset Pathname pass3.1M
 Dataset Creation Fri May 20 11:29:13 2022

Serial-Model:
 Surface Cal Performed:
 Downhole Cal Performed:
 After Survey Verification Performed:

PROBE8-DILG
 Thu May 19 01:03:14 2022
 Mon Sep 10 14:28:38 2018
 Mon Sep 10 14:28:40 2018

Surface Calibration

Loop:	Readings			References			Results	
	Air	Loop		Air	Loop		m	b
Deep	0.015	0.648	V	0.000	400.000	mmho/m	600.000	0.000
Medium	0.029	0.796	V	0.000	464.000	mmho/m	590.000	-12.000
Internal:	Zero	Cal		Zero	Cal		m	b
Deep	0.017	0.657	V	0.000	400.000	mmho/m	625.153	-10.619
Medium	0.016	0.757	V	0.000	464.000	mmho/m	625.992	-9.739

Downhole Calibration

	Readings			References			Results	
	Zero	Cal		Zero	Cal		m'	b'
Deep	0.000	0.000	mmho/m	2.011	405.777	mmho/m	1.000	0.000
Medium	0.000	0.000	mmho/m	7.590	503.393	mmho/m	1.000	0.000
LL3		7.500	V		1500.000	Ohm-m		
		0.000	V		20.000	Ohm-m		
		-7.200	V		3800.000	mmho-m		

After Survey Verification

	Readings			Targets			Results	
	Zero	Cal		Zero	Cal		m'	b'
Deep	0.000	0.000	mmho/m	0.000	0.000	mmho/m	0.000	0.000
Medium	0.000	0.000	mmho/m	0.000	0.000	mmho/m	0.000	0.000
LL3		1.000	Ohm-m		1.000	Ohm-m		
		0.000	Ohm-m		0.000	Ohm-m		
		1.000	mmho-m		1.000	mmho-m		

Litho Density Calibration Report
 Serial: 001N Model: PRB

Master Calibration

Performed Thu Mar 19 11:30:16 2020

	Background	Magnesium	Aluminum	Aluminum+Fe	
Window 1	1572.2	7510.8	2837.3	2643.1	cps
Window 2	1446.2	6523.9	2552.8	2409.9	cps
Window 3	1060.9	3611.4	1731.5	1684.8	cps
Window 4	145.5	363.4	363.2	368.1	cps
Long Space	0.0	5077.7	1106.6	963.7	cps
Short Space	3.1	1709.3	1103.4	916.9	cps
Rho		1.7100	2.5900	0.0000	g/cc
Pe		2.0000	2.7500	5.7900	
Rib Angle	: 44.0	Rib Slope	: 0.965	Density/Spine Ratio	: 0.555
Spine Angle	: 74.0	Spine Slope	: 3.481	Spine Intercept	: -17.4

Before Survey Verification

Performed Wed Dec 31 18:00:00 1969

Window 1	0.0	0.0	0.0	0.0	cps
Window 2	0.0	0.0	0.0	0.0	cps
Window 3	0.0	0.0	0.0	0.0	cps
Window 4	0.0	0.0	0.0	0.0	cps

Long Space	0.0	0.0	0.0	0.0	cps
Short Space	0.0	0.0	0.0	0.0	cps
Measured Rho		0.0000	0.0000	0.0000	g/cc
Measured Correction		0.0000	0.0000	0.0000	g/cc
Measured Pe			0.0000	0.0000	

After Survey Verification		Performed Wed Dec 31 18:00:00 1969			
Window 1	0.0	0.0	0.0	0.0	cps
Window 2	0.0	0.0	0.0	0.0	cps
Window 3	0.0	0.0	0.0	0.0	cps
Window 4	0.0	0.0	0.0	0.0	cps
Long Space	0.0	0.0	0.0	0.0	cps
Short Space	0.0	0.0	0.0	0.0	cps
Measured Rho		0.0000	0.0000	0.0000	g/cc
Measured Correction		0.0000	0.0000	0.0000	g/cc
Measured Pe			0.0000	0.0000	

Compensated Neutron Calibration Report

Serial Number: 6I
Tool Model: G

CALIBRATION						
	Detector	Readings		Target		Normalization
	Short Space	1.00	cps	1.00	cps	1.0000
	Long Space	1.00	cps	1.00	cps	1.0000

PRE-SURVEY VERIFICATION						
	Detector	Readings		Measured	Target	
1)	Short Space	cps				
	Long Space	cps		pu	pu	
2)	Short Space	cps				
	Long Space	cps		pu		
3)	Short Space	cps				
	Long Space	cps		pu		

POST-SURVEY VERIFICATION						
	Detector	Readings		Measured	Target	
1)	Short Space	cps				
	Long Space	cps		pu	pu	
2)	Short Space	cps				
	Long Space	cps		pu	pu	
3)	Short Space	cps				
	Long Space	cps		pu	pu	

Gamma Ray Calibration Report

Serial Number: GR6
Tool Model: OPEN
Performed: Thu May 19 01:02:38 2022

Calibrator Value: 150.0 GAPI

Background Reading:	0.0	cps
Calibrator Reading:	276.0	cps
Sensitivity:	0.7500	GAPI/cps