

MICRO
LOG



Company RAYMOND OIL COMPANY, INC.
Well FRUSHER FARMS #1
Field WILDCAT
County HODGEMAN State KANSAS

Location: API #: 15-1083-22004-0000
SE - NE - SW - NW
1729' FNL & 1236' FWL
Permanent Datum GROUND LEVEL Elevation 2312
Log Measured From KELLY BUSHING 5' A.G.L.
Drilling Measured From KELLY BUSHING
Other Services
CDL/CNL
DIL
Elevation
K.B. 2317
D.F. 2315
G.L. 2312

Date	5/20/22		
Run Number	TWO		
Depth Driller	4620		
Depth Logger	4620		
Bottom Logged Interval	4618		
Top Log Interval	3500		
Casing Driller	8 5/8"@261'		
Casing Logger	261		
Bit Size	7 7/8"		
Type Fluid in Hole	CHEMICAL MUD	CHLORIDES: 8,300 PPM	
Density / Viscosity	9.6/44		
pH / Fluid Loss	8.0/13.2		
Source of Sample	FLOWLINE		
Rm @ Meas. Temp	.650@75F		
Rmf @ Meas. Temp	.488@75F		
Rmc @ Meas. Temp	.780@75F		
Source of Rmf / Rmc	MEASURED		
Rm @ BHT	.400@122F		
Time Circulation Stopped	4 HOURS		
Time Logger on Bottom	11:45 A.M.		
Maximum Recorded Temperature	122F		
Equipment Number	8916		
Location	HAYS, KANSAS		
Recorded By	JEFF LUEBBERS		
Witnessed By	KIM SHOEMAKER		

<<< Fold Here >>>

All interpretations are opinions based on inferences from electrical or other measurements and we cannot and do not guarantee the accuracy or correctness of any interpretation, and we shall not, except in the case of gross or willful negligence on our part, be liable or responsible for any loss, costs, damages, or expenses incurred or sustained by anyone resulting from any interpretation made by any of our officers, agents or employees. These interpretations are also subject to our general terms and conditions set out in our current Price Schedule.

Comments

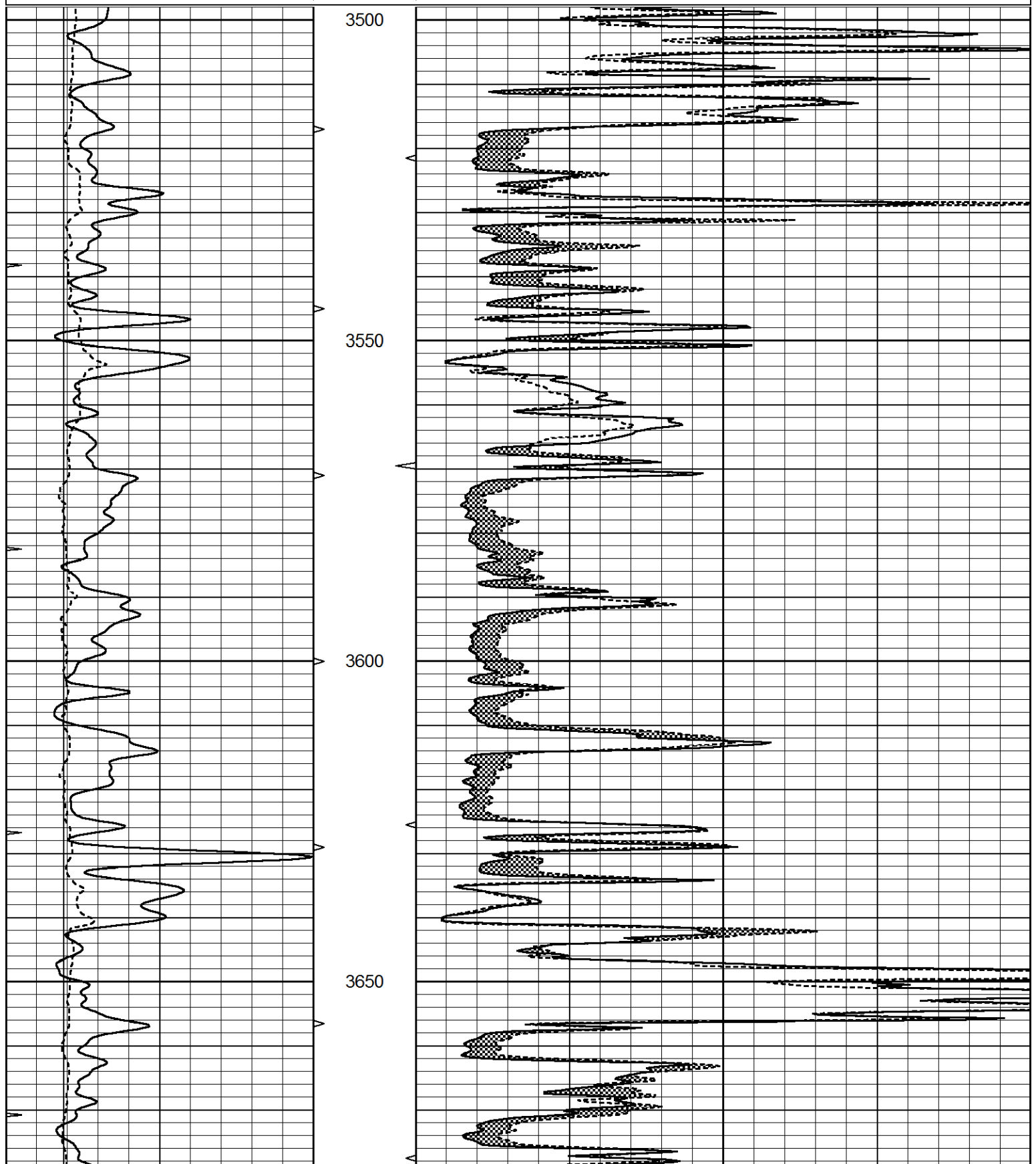
THANK YOU FOR USING ELI WIRELINE, HAYS, KS. (785) 628-6395
DIRECTIONS:
NESS CITY, KS., 11S. ON HWY 283 TO "RD. X", 3 1/2E., S. INTO

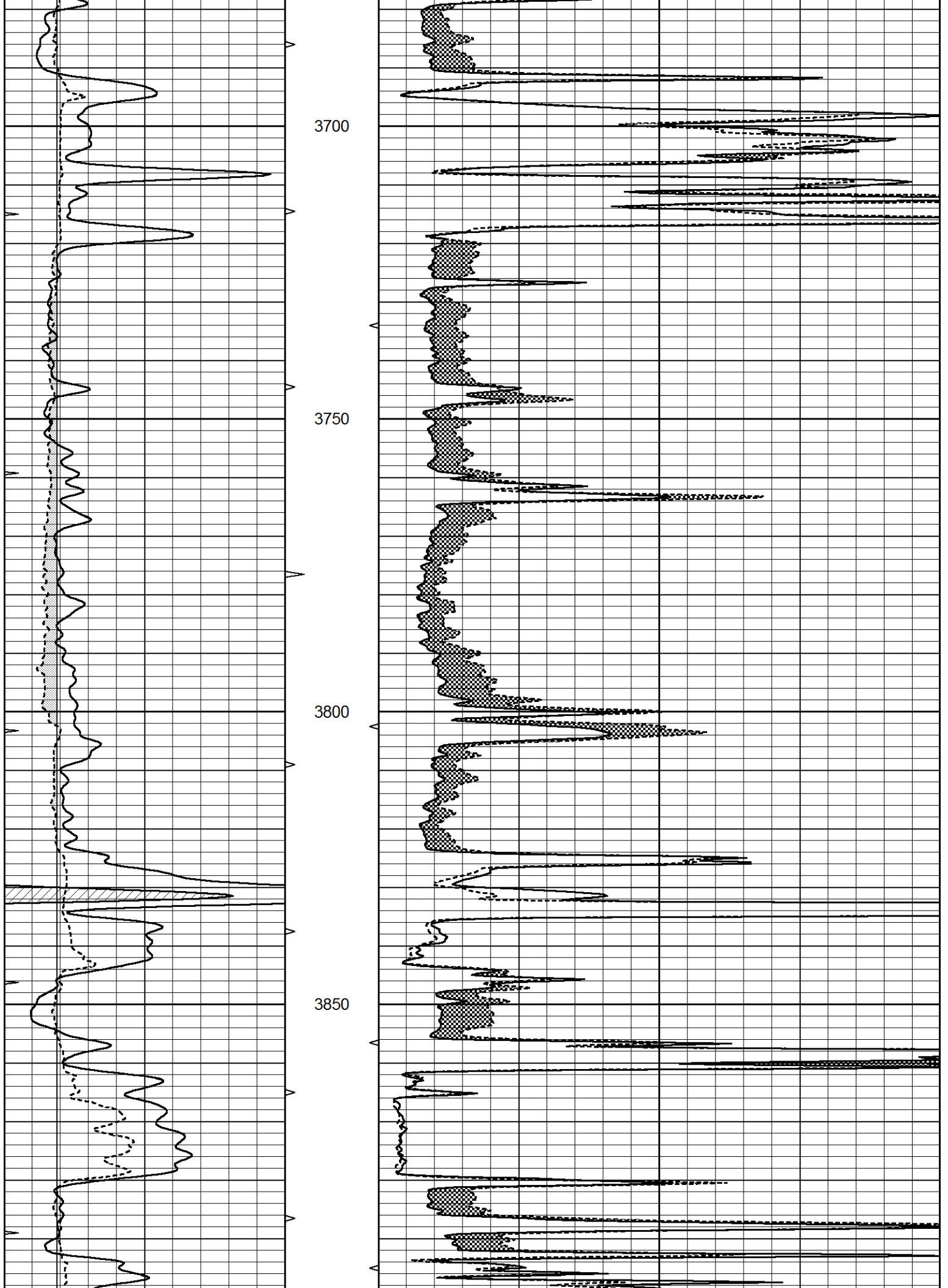


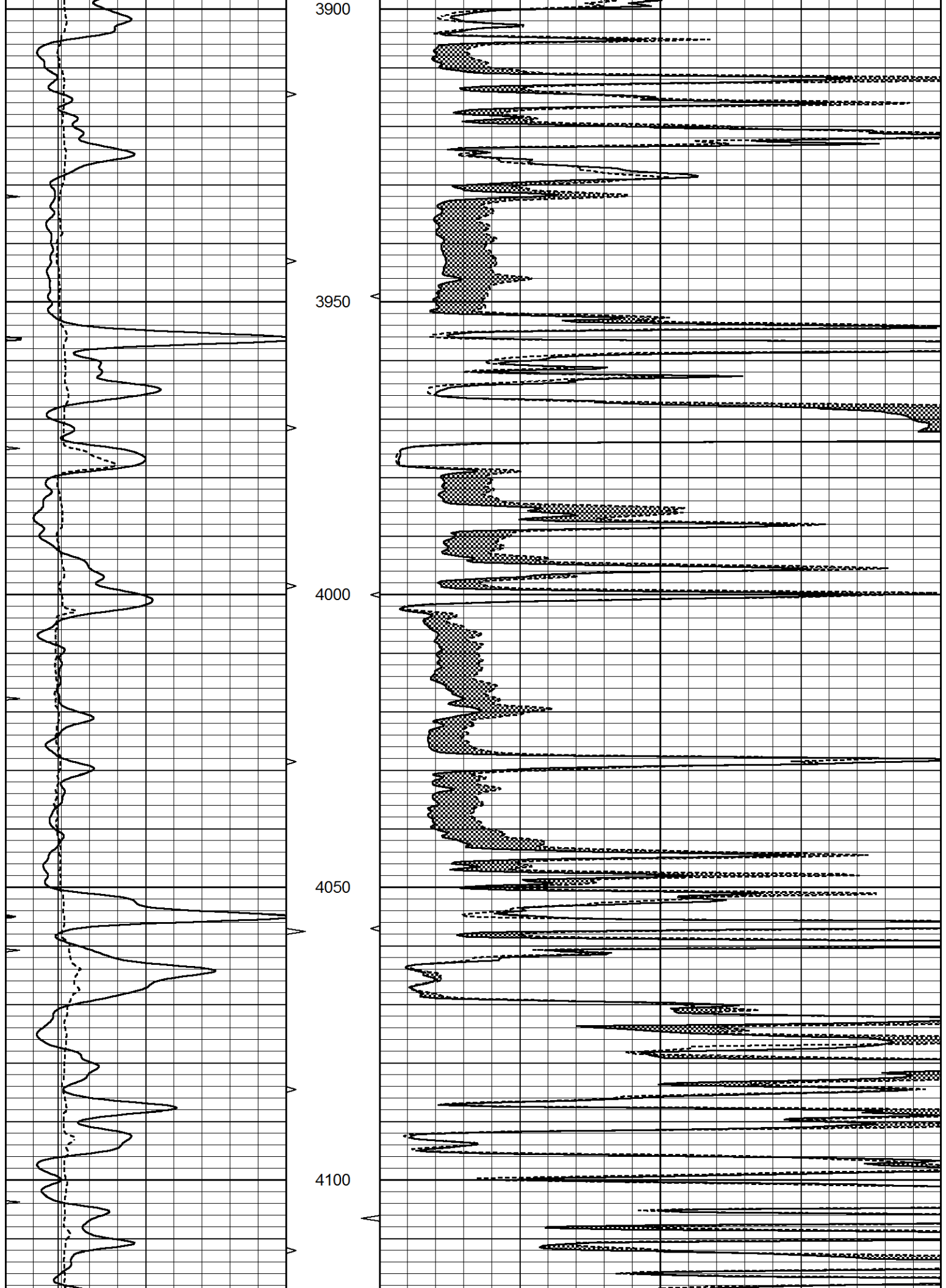
MAIN SECTION

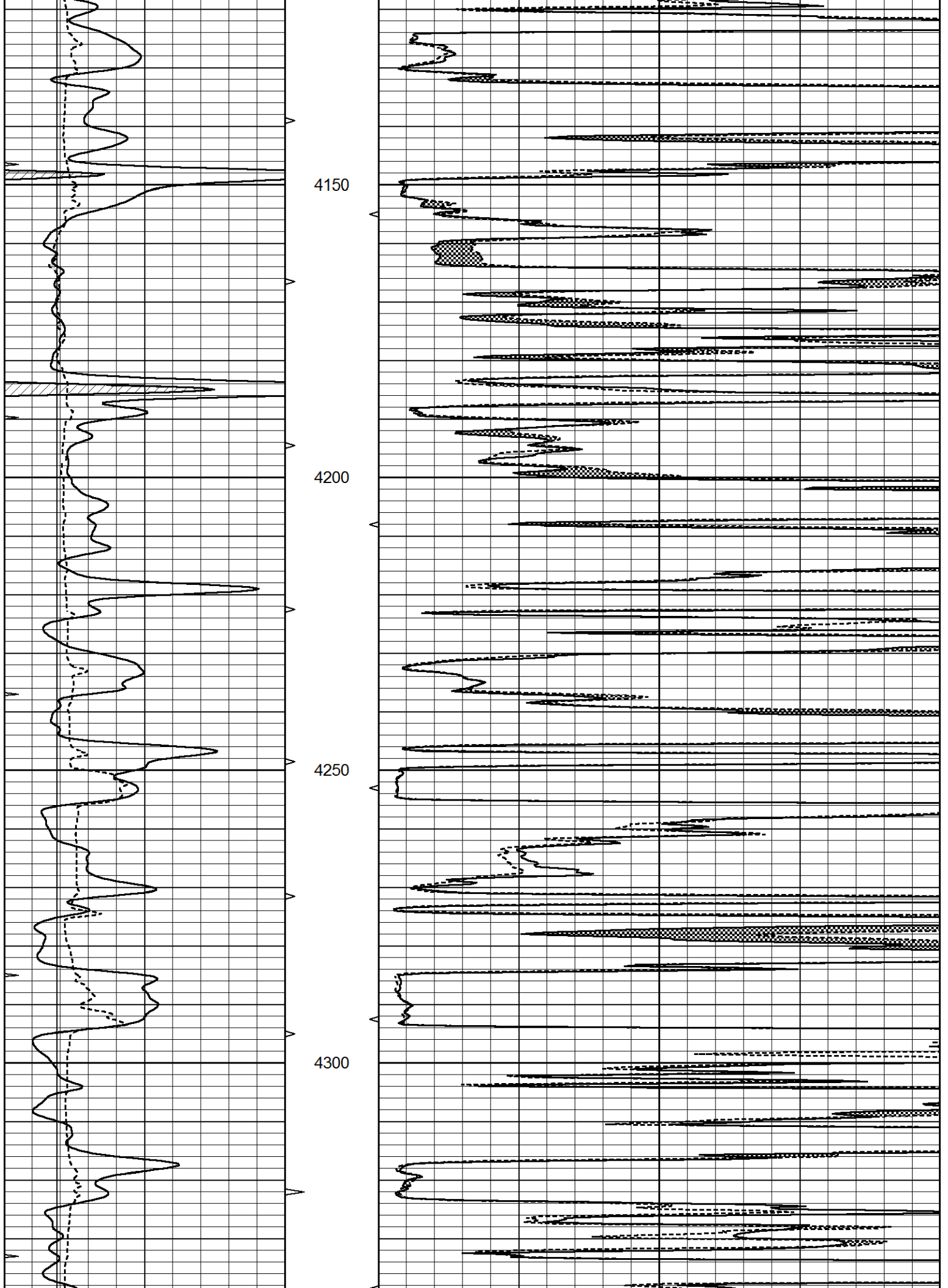
Database File 6552ddn.db
 Dataset Pathname pass6.2M
 Presentation Format _micro
 Dataset Creation Fri May 20 13:06:23 2022
 Charted by Depth in Feet scaled 1:240

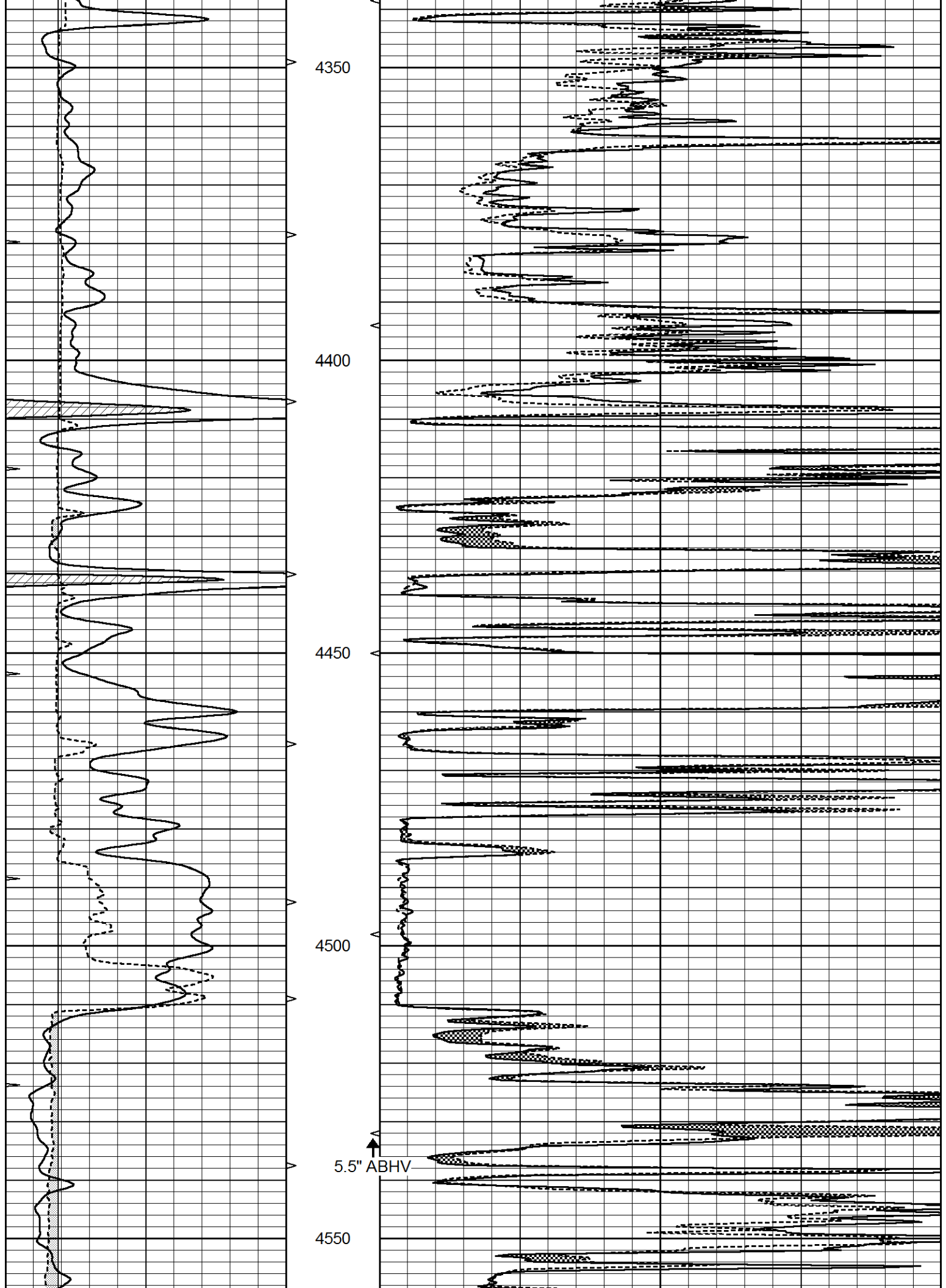
0	GAMMA RAY (GAPI)	150	ABHV	0	MEL1.5 (Ohm-m)	60
6	CALIPER (in)	16	10 (ft3)	0	MEL2.0 (Ohm-m)	60
0	MINMK	20	TBHV			
			0 (ft3)	10		

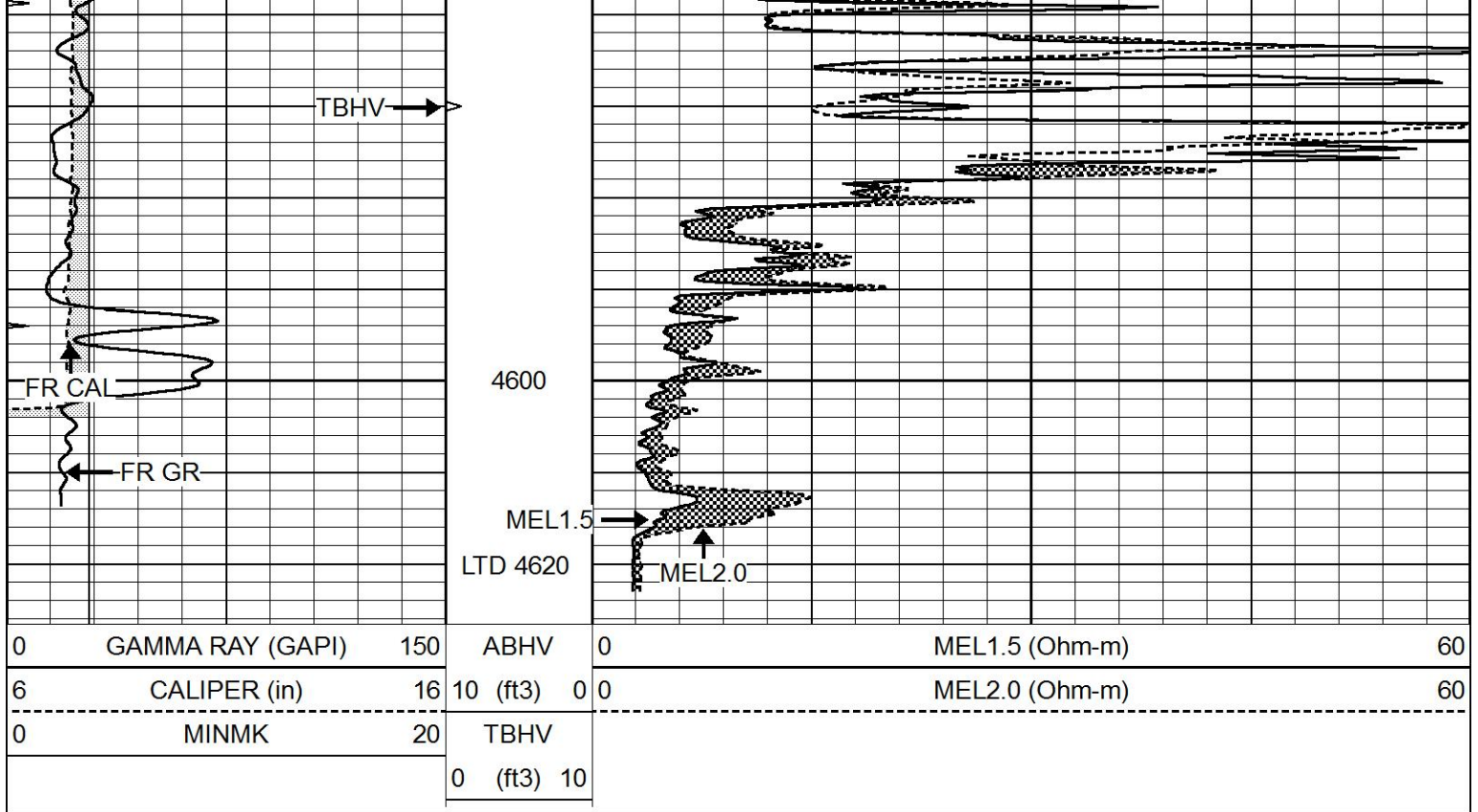








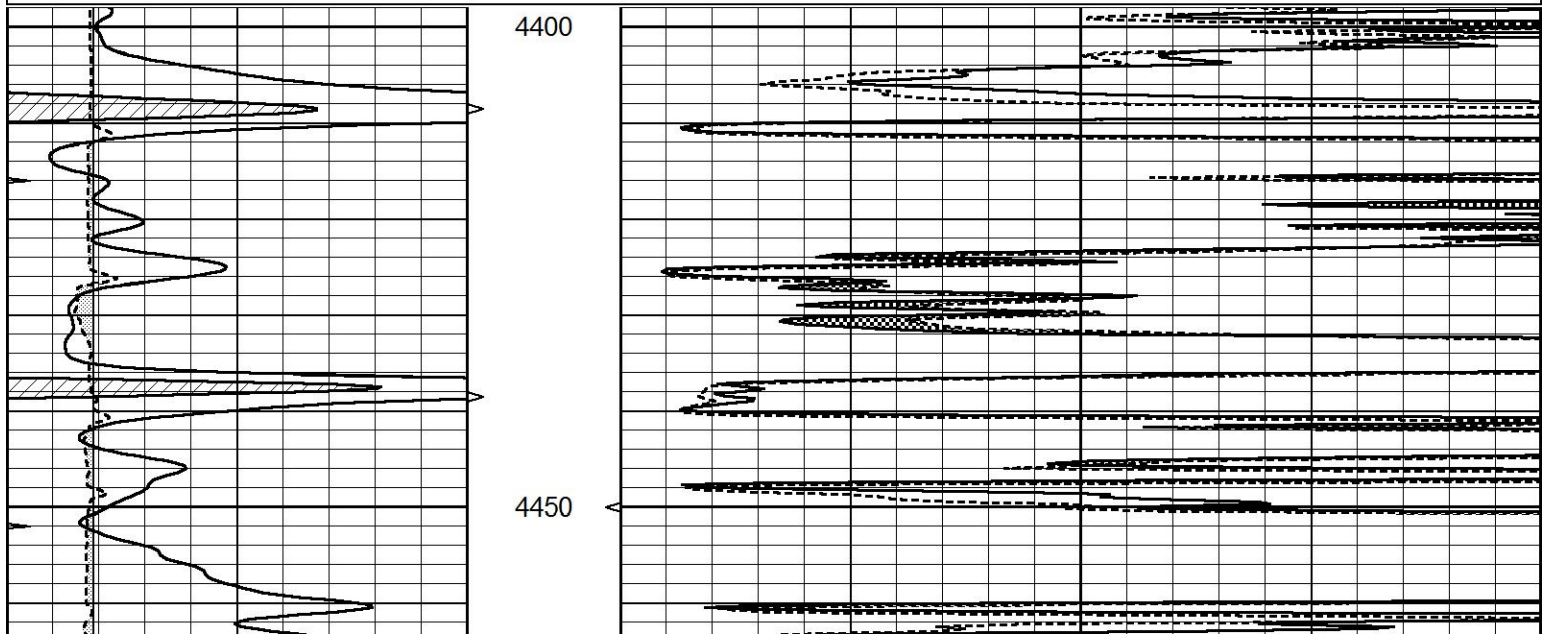


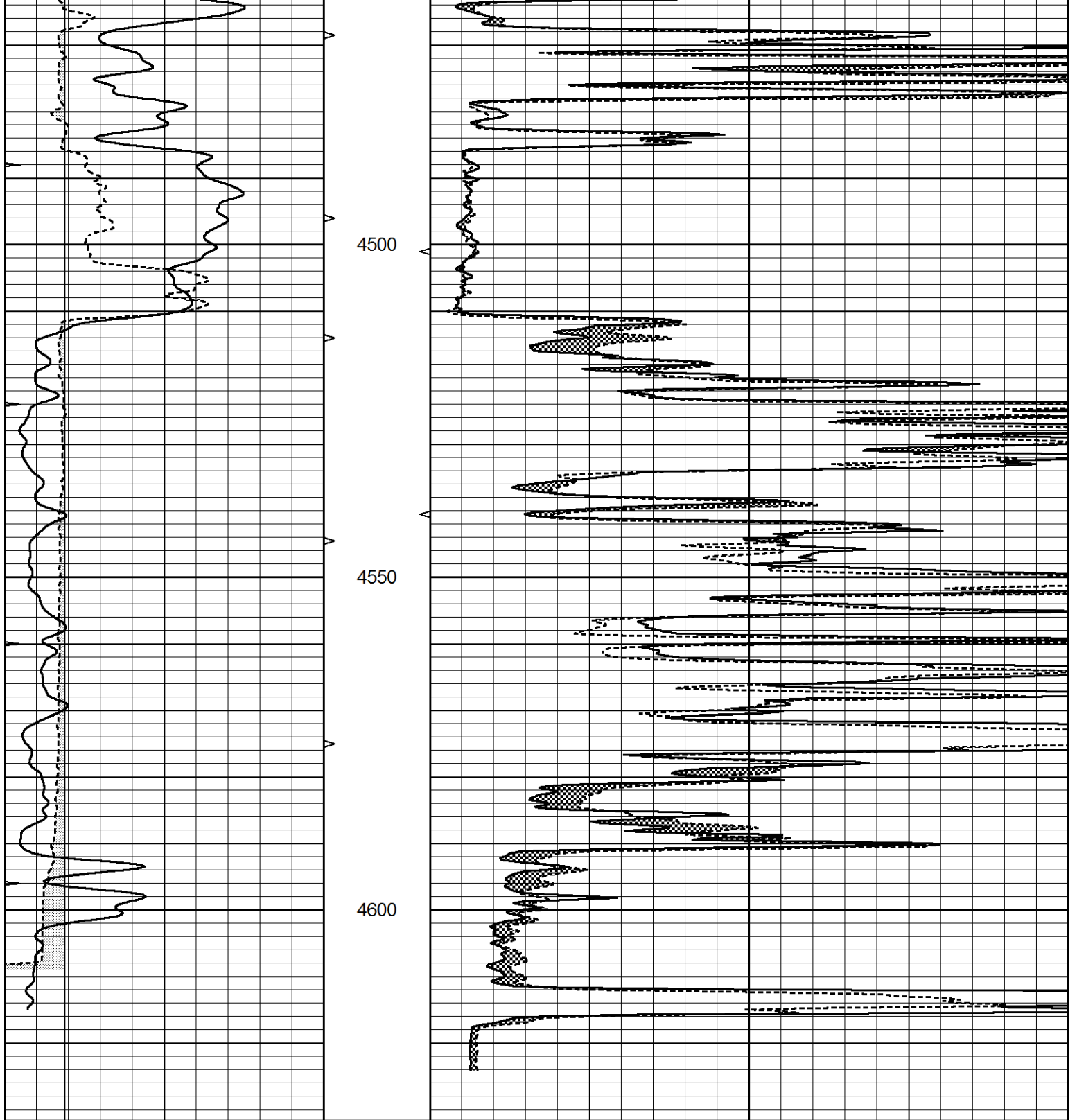


REPEAT SECTION

Database File 6552ddn.db
 Dataset Pathname pass5.1R
 Presentation Format _micro
 Dataset Creation Fri May 20 12:37:14 2022
 Charted by Depth in Feet scaled 1:240

0	GAMMA RAY (GAPI)	150	ABHV	0	MEL1.5 (Ohm-m)	40
6	CALIPER (in)	16	10 (ft3) 0	0	MEL2.0 (Ohm-m)	40
0	MINMK	20	TBHV			
			0 (ft3) 10			





0	GAMMA RAY (GAPI)	150	ABHV	0	MEL1.5 (Ohm-m)	40
6	CALIPER (in)	16	10 (ft3)	0	MEL2.0 (Ohm-m)	40
0	MINMK	20	TBHV			
			0 (ft3)	10		

Calibration Report

Database File 6552ddn.db
 Dataset Pathname pass6.2M
 Dataset Creation Fri May 20 13:06:23 2022

MICRO Calibration Report

Serial Number

MICRO5

Serial Number: MICRO5
Tool Model: PROBE
Performed: Fri May 20 12:20:55 2022

Caliper Calibration:	Gain=5.333	Offset=-17.000
References	Low Cal	High Cal
Readings	7.000	15.000
	4.500	6.000

1.5" Calibration:	Gain=40.000	Offset=0.000
References	Low Cal	High Cal
Readings	0.000	20.000
	0.015	1.007

2" Calibration:	Gain=75.000	Offset=-1.000
References	Low Cal	High Cal
Readings	0.000	20.000
	0.008	0.908

Gamma Ray Calibration Report

Serial Number: GR5
Tool Model: OPEN
Performed: Fri May 20 12:19:33 2022

Calibrator Value:	1.0	GAPI
Background Reading:	0.0	cps
Calibrator Reading:	1.0	cps
Sensitivity:	0.5000	GAPI/cps