



MIDWEST SURVEYS
LOGGING - PERFORATING - CONSULTING SERVICES
P.O. Box 68, Osawatomie, KS 66064
913.755 - 2128

GAMMA RAY / NEUTRON / CCL

File No.

Company **Altavista Energy, Inc.**

Well **Leonard No. A-51**

Field **Perry - Halligan**

County **Woodson**

State **Kansas**

Location **3380' FSL & 1690' FEL
SW-NE-SW-NE**

Other Services

Perforate

Sec. **18** Twp. **26S** Rge. **17E**

Permanent Datum **GL** Elevation **1026'**

Log Measured From **GL** K.B. NA

Drilling Measured From **GL** D.F. NA

Date **08-13-2024** Elevation **GL 1026'**

Run Number **One**

Depth Driller **944.0**

Depth Logger **940.7**

Bottom Logged Interval **899.7**

Top Log Interval **20.0**

Fluid Level **Full**

Type Fluid **Water**

Density / Viscosity **NA**

Salinity - ppm Cl **NA**

Max Recorded Temp **NA**

Estimated Cement Top **0.0**

Equipment No. **104** Osawatomie

Recorded By **Steve Windisch**

Witnessed By **Bryan Miller**

BORE-HOLE RECORD

NO. BIT FROM TO SIZE WGT. FROM TO

One 9.875" 0.0 22.0 7.00" 15.0 # 0.0 22.0

Two 5.875" 22.0 944.0 2.875" 6.5 # 0.0 834.0

Batch Battle Set At 601.6

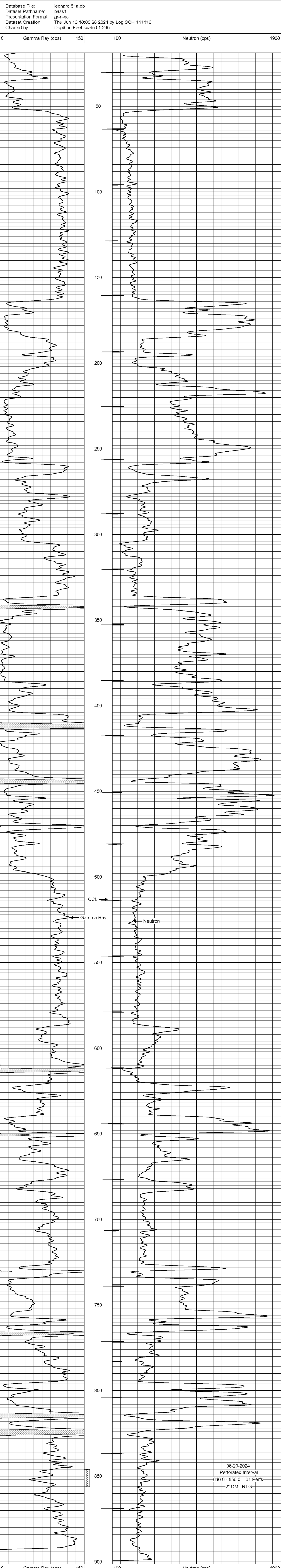
<<< Fold Here >>>

All interpretations are opinions based on inferences from electrical or other measurements and we cannot and do not guarantee the accuracy or correctness of any interpretation, and we shall not, except in the case of gross or willful negligence on our part, be liable or responsible for any loss, costs, damages, or expenses incurred or sustained by anyone resulting from any interpretation made by any of our officers, agents or employees. These interpretations are also subject to our general terms and conditions set out in our current Price Schedule.

Comments

Drilling Contractor :
WoCo Drilling, LLC

Database File: leonard 51a.db
Dataset Pathname: pass1
Presentation Format: gr-n-ccl
Dataset Creation: Thu Jun 13 10:06:28 2024 by Log SCH 111116
Charted by: Depth in Feet scaled 1:240



06-20-2024
Perforated Interval
846.0 - 856.0 31 Perfs
2" DML RTG