



MICRO
LOG

Company PALOMINO PETROLEUM
Well GLADIATOR #1
Field WILDCAT
County TREGO
State KS

Company PALOMINO PETROLEUM
Well GLADIATOR #1
Field WILDCAT
County TREGO State KS

Location: 733' FSL & 1897' FWL
API #: 15-195-23136
Permanent Datum SEC 20 TWP 15S RGE 25W
Log Measured From Ground Level Elevation 2459
Drilling Measured From KB 8' AGL
KB
Other Services
CDNL
DIL
Elevation
K.B. 2467
D.F. 2465
G.L. 2459

Date	5/26/22
Run Number	TWO
Depth Driller	4520
Depth Logger	4520
Bottom Logged Interval	4518
Top Log Interval	3600
Casing Driller	8 5/8" @ 230'
Casing Logger	230
Bit Size	7 7/8"
Type Fluid in Hole	Chemical
Density / Viscosity	9.4/58
pH / Fluid Loss	10.0/6.0
Source of Sample	Pit
Rm @ Meas. Temp	1.6@70degf
Rmf @ Meas. Temp	1.2@70degf
Rmc @ Meas. Temp	1.92@70degf
Source of Rmf / Rmc	Calculated
Rm @ BHT	1.01@110degf
Time Circulation Stopped	2:00 P.M.
Time Logger on Bottom	4:00 PM
Maximum Recorded Temperature	110degf
Equipment Number	T605
Location	Hays, KS
Recorded By	GUS PFANENSTIEL
Witnessed By	RYAN SEIB

<<< Fold Here >>>

All interpretations are opinions based on inferences from electrical or other measurements and we cannot and do not guarantee the accuracy or correctness of any interpretation, and we shall not, except in the case of gross or willful negligence on our part, be liable or responsible for any loss, costs, damages, or expenses incurred or sustained by anyone resulting from any interpretation made by any of our officers, agents or employees. These interpretations are also subject to our general terms and conditions set out in our current Price Schedule.

Comments

UTICA EAST TO F RD NORTH TO CURVE,
1/2 EAST, NORTH INTO.

Thank You for using Gemini Wireline LLC
785-625-1182

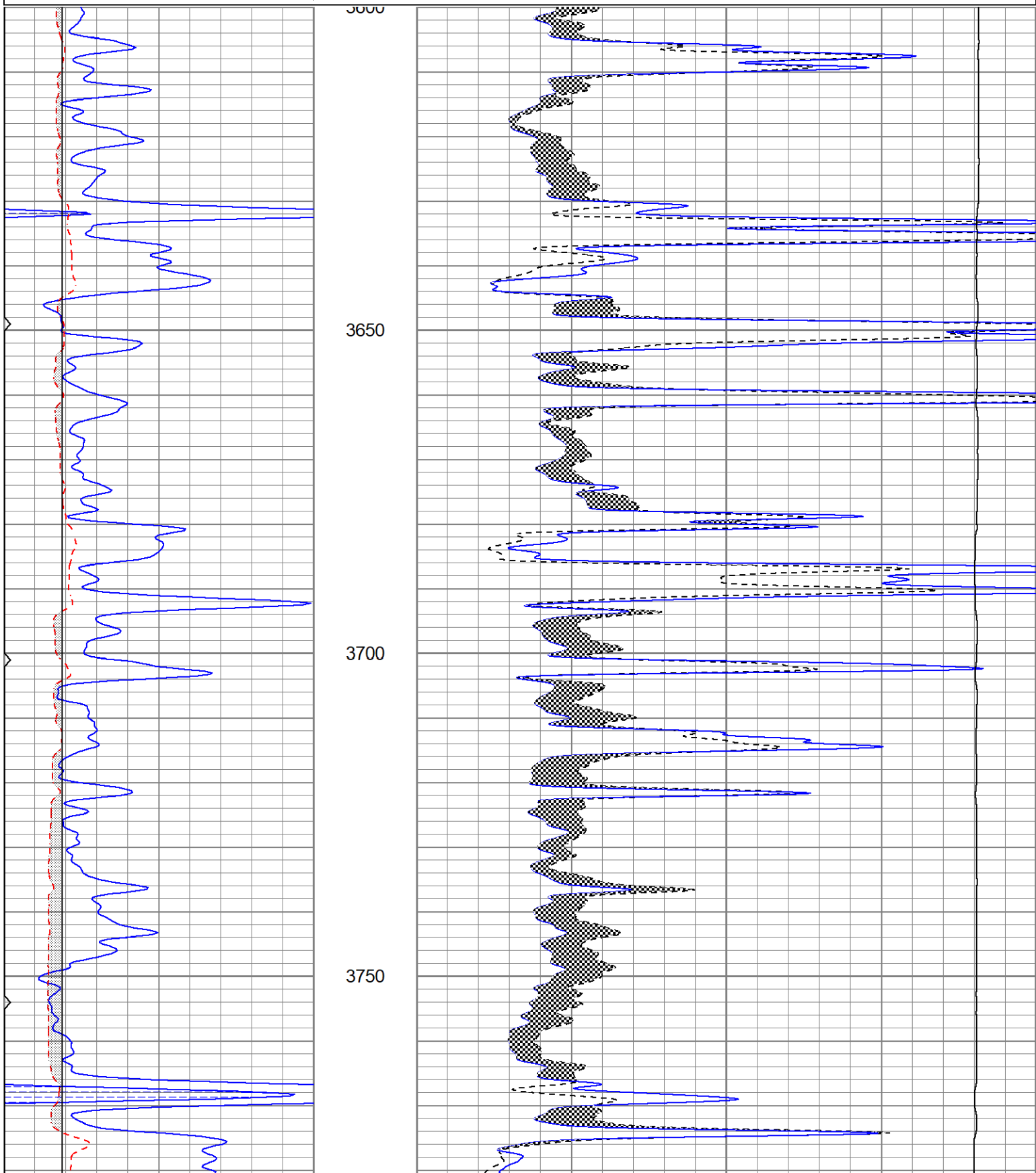


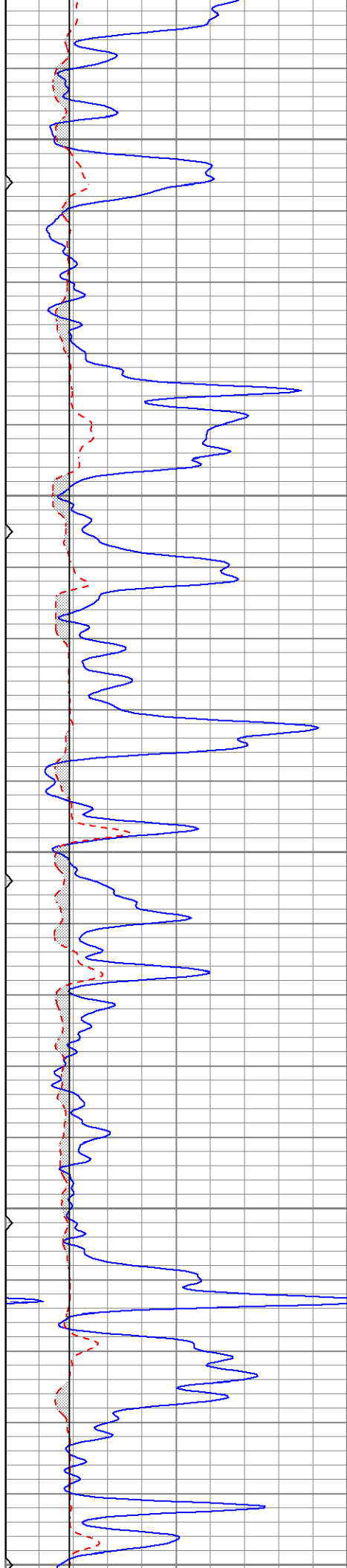
MAIN PASS

Database File ppgladiator#1oh.db
 Dataset Pathname pass5.1
 Presentation Format kml
 Dataset Creation Thu May 26 18:06:37 2022
 Charted by Depth in Feet scaled 1:240

0	GR (GAPI)	150
6	MCAL (in)	16
6	BOREID (in)	16
0	MINMK	50

0	MN 2" (Ohm-m)	20
0	MI 1" (Ohm-m)	20
10000	LTEN (lb)	0





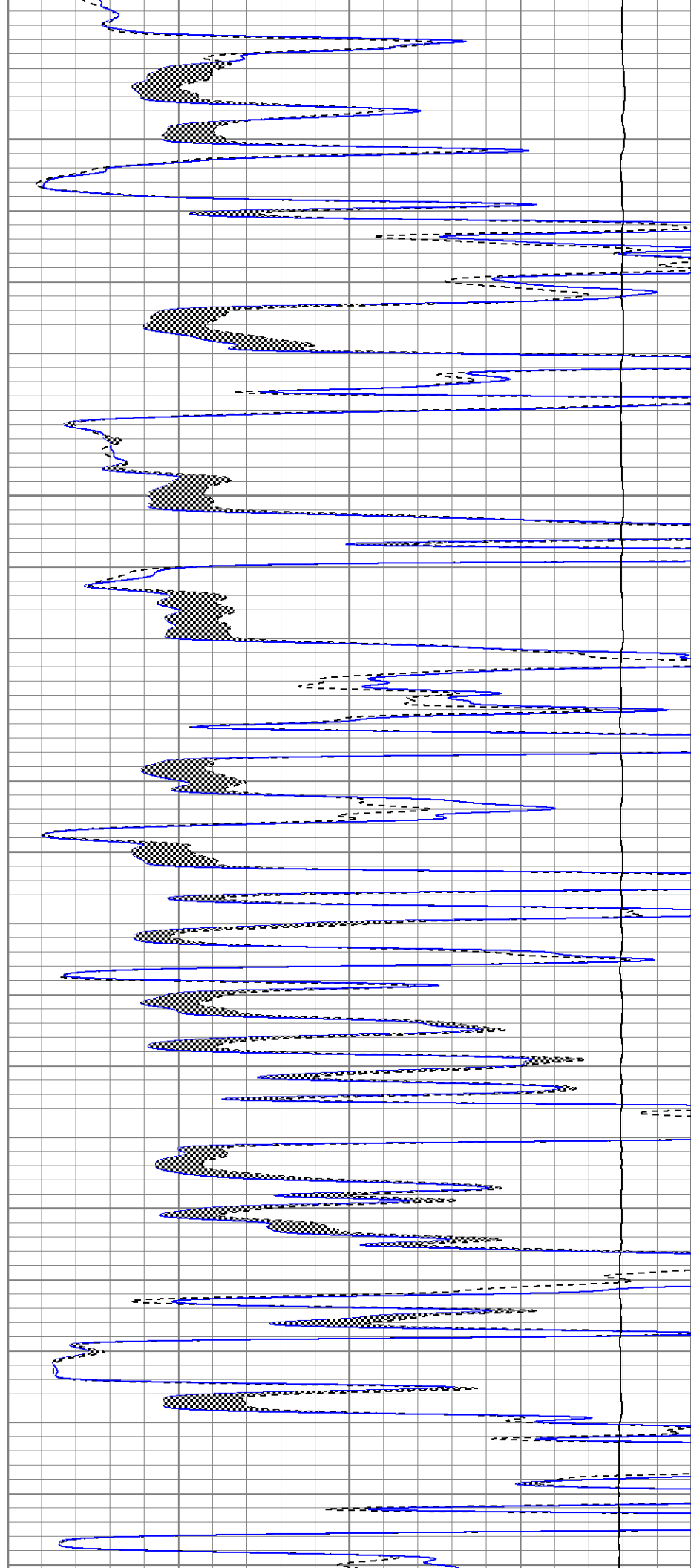
3800

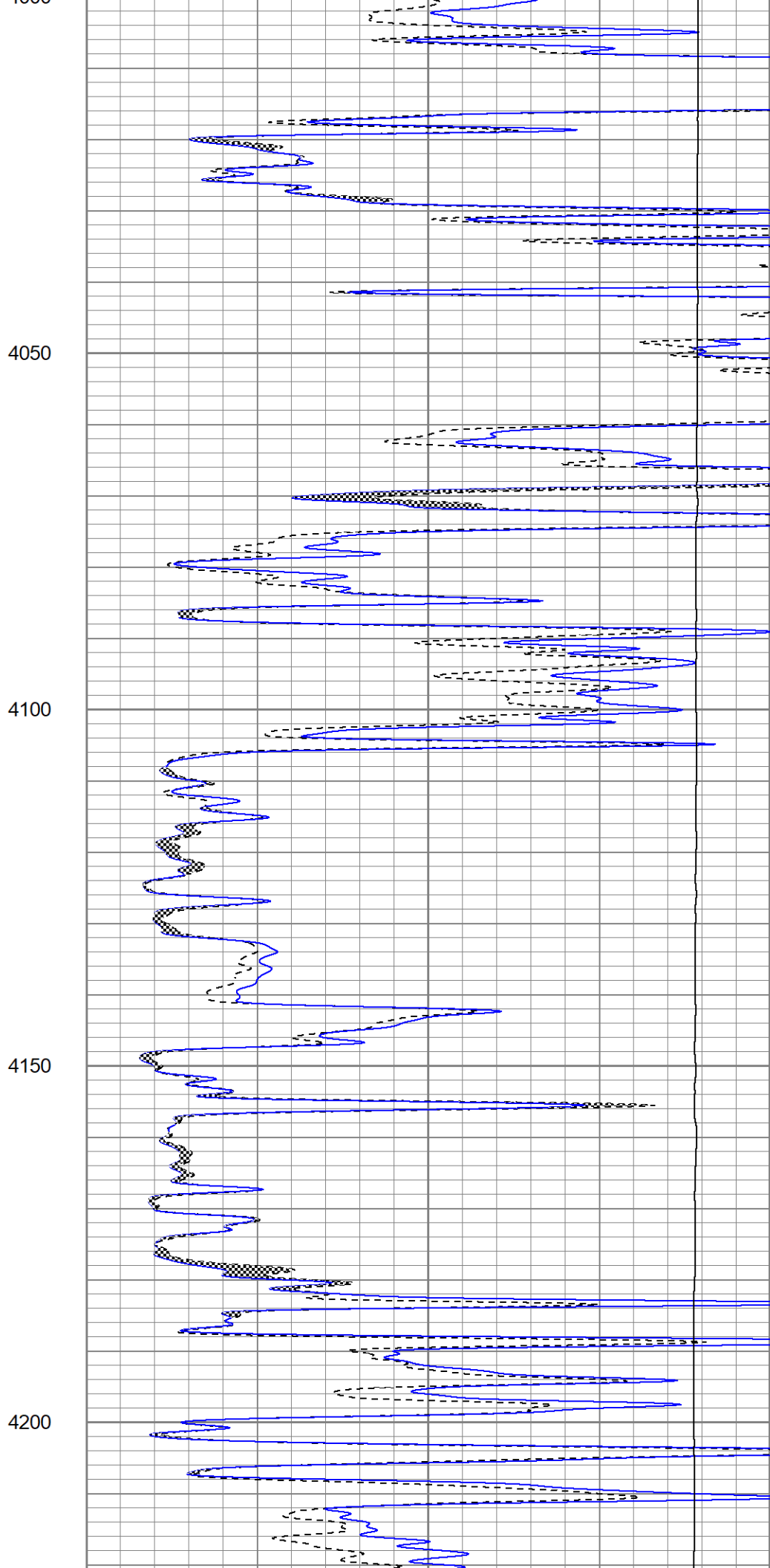
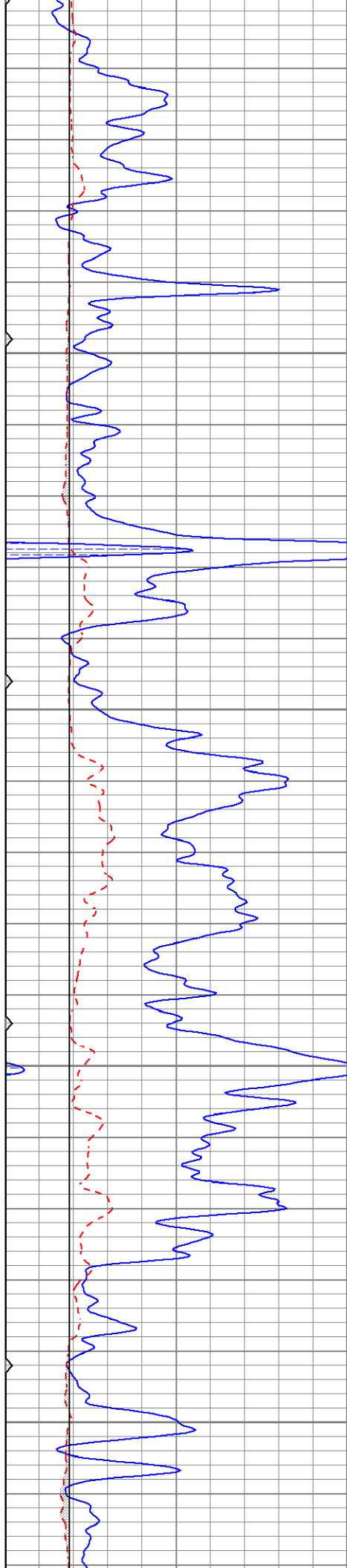
3850

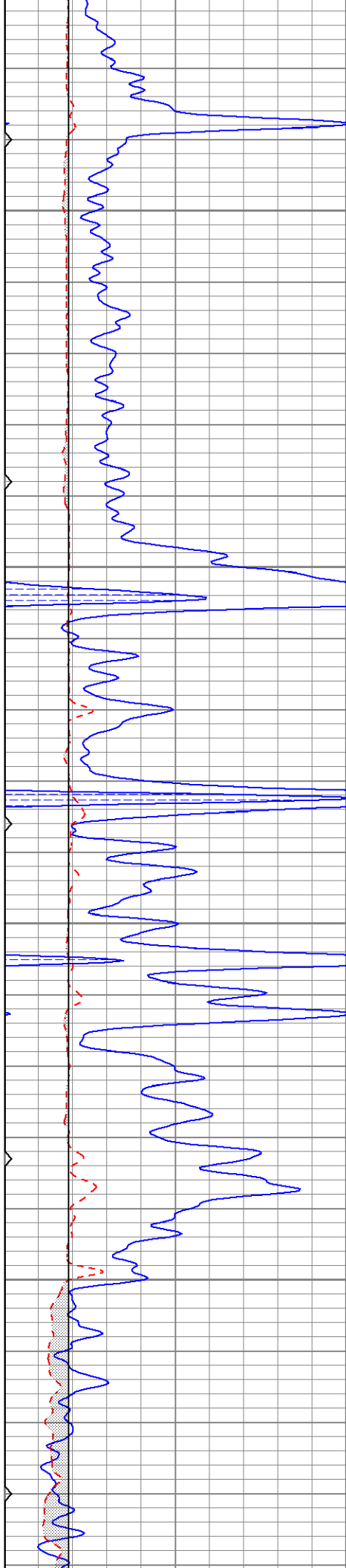
3900

3950

4000





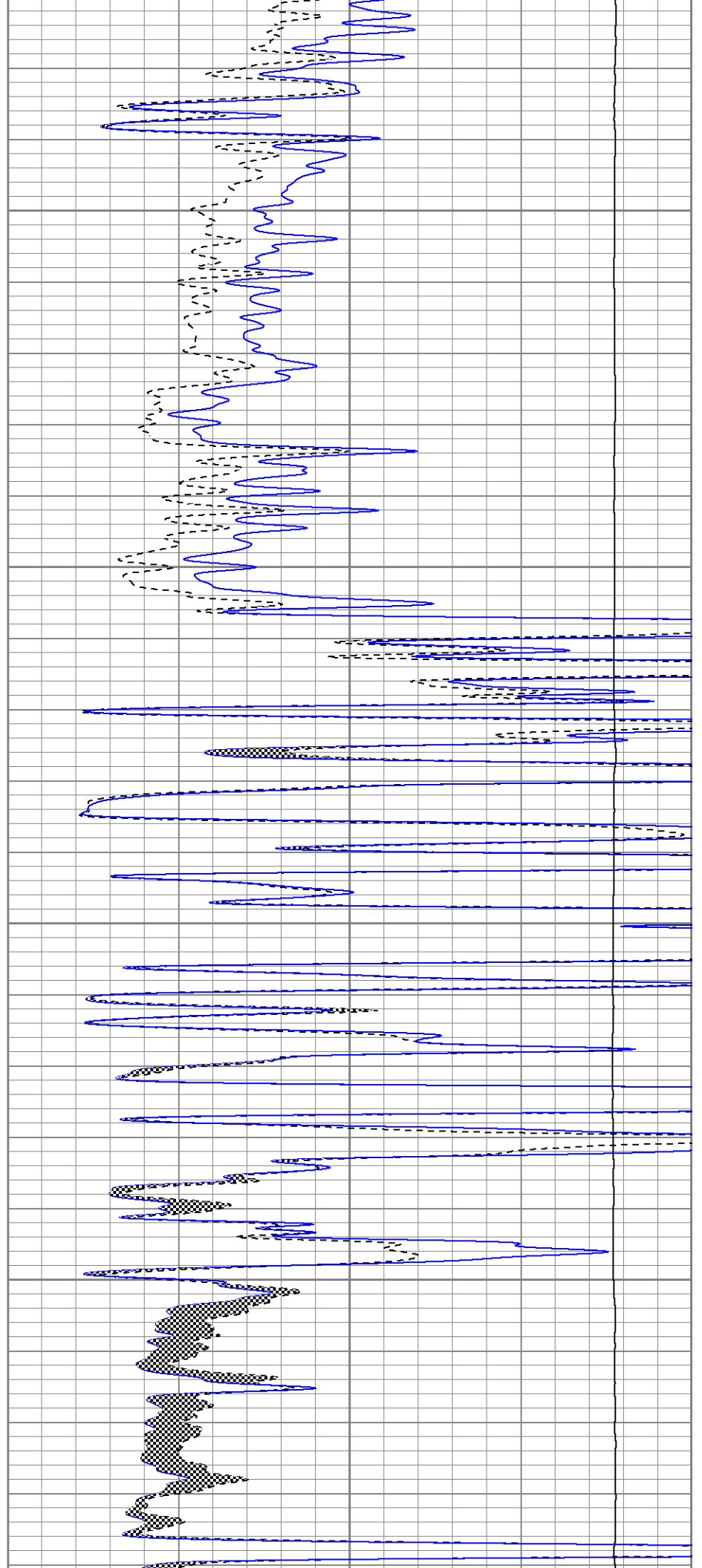


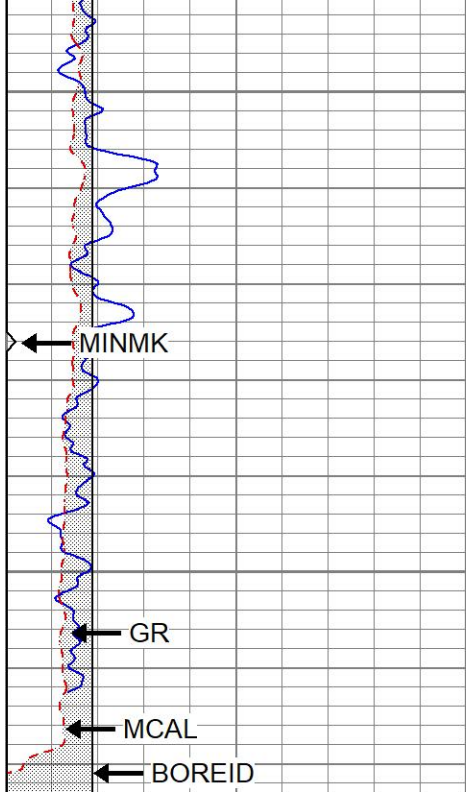
4250

4300

4350

4400

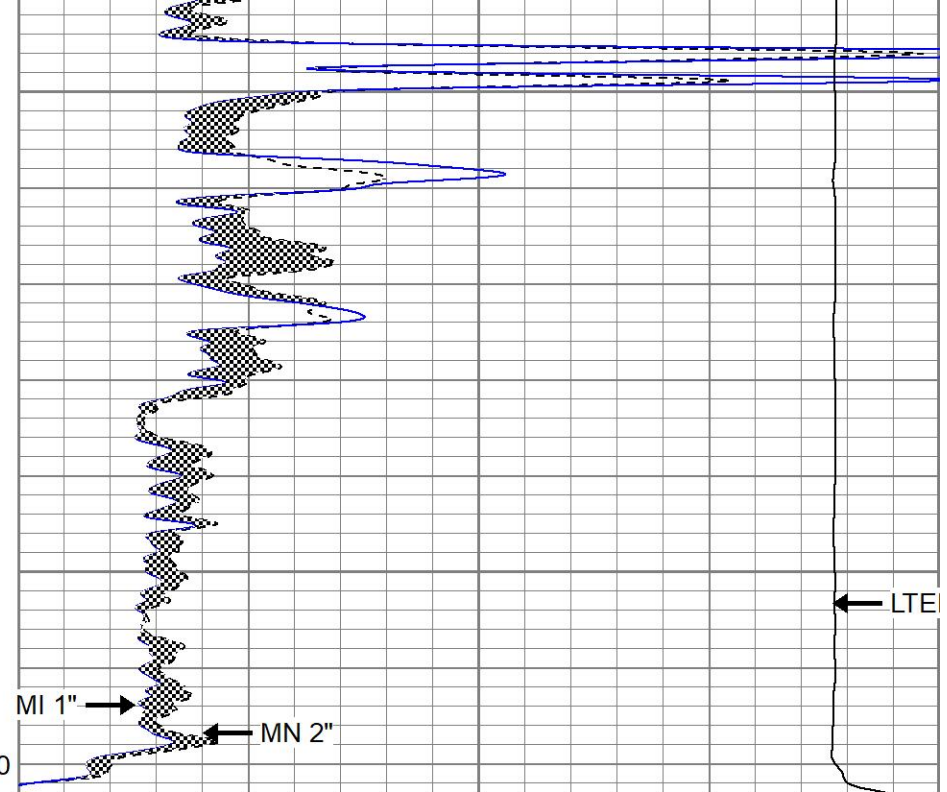




4450

4500

LTD 4520



0	GR (GAPI)	150
6	MCAL (in)	16
6	BOREID (in)	16
0	MINMK	50

0	MN 2" (Ohm-m)	20
0	MI 1" (Ohm-m)	20
10000	LTEN (lb)	0

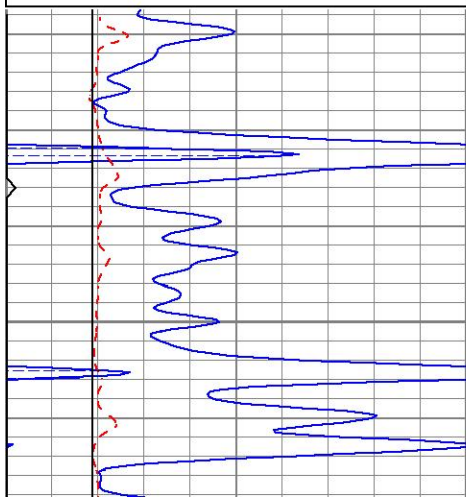


REPEAT SECTION

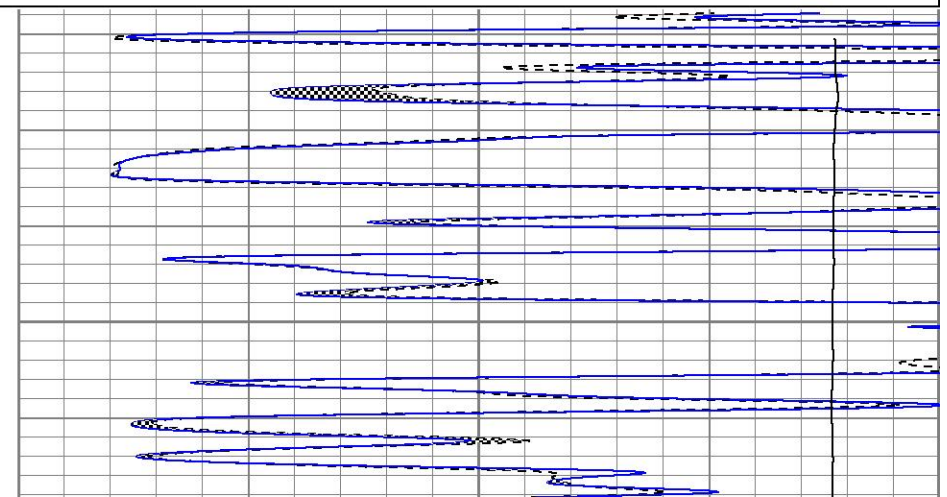
Database File ppgladiator#1oh.db
 Dataset Pathname pass4RP
 Presentation Format kml
 Dataset Creation Thu May 26 17:49:27 2022
 Charted by Depth in Feet scaled 1:240

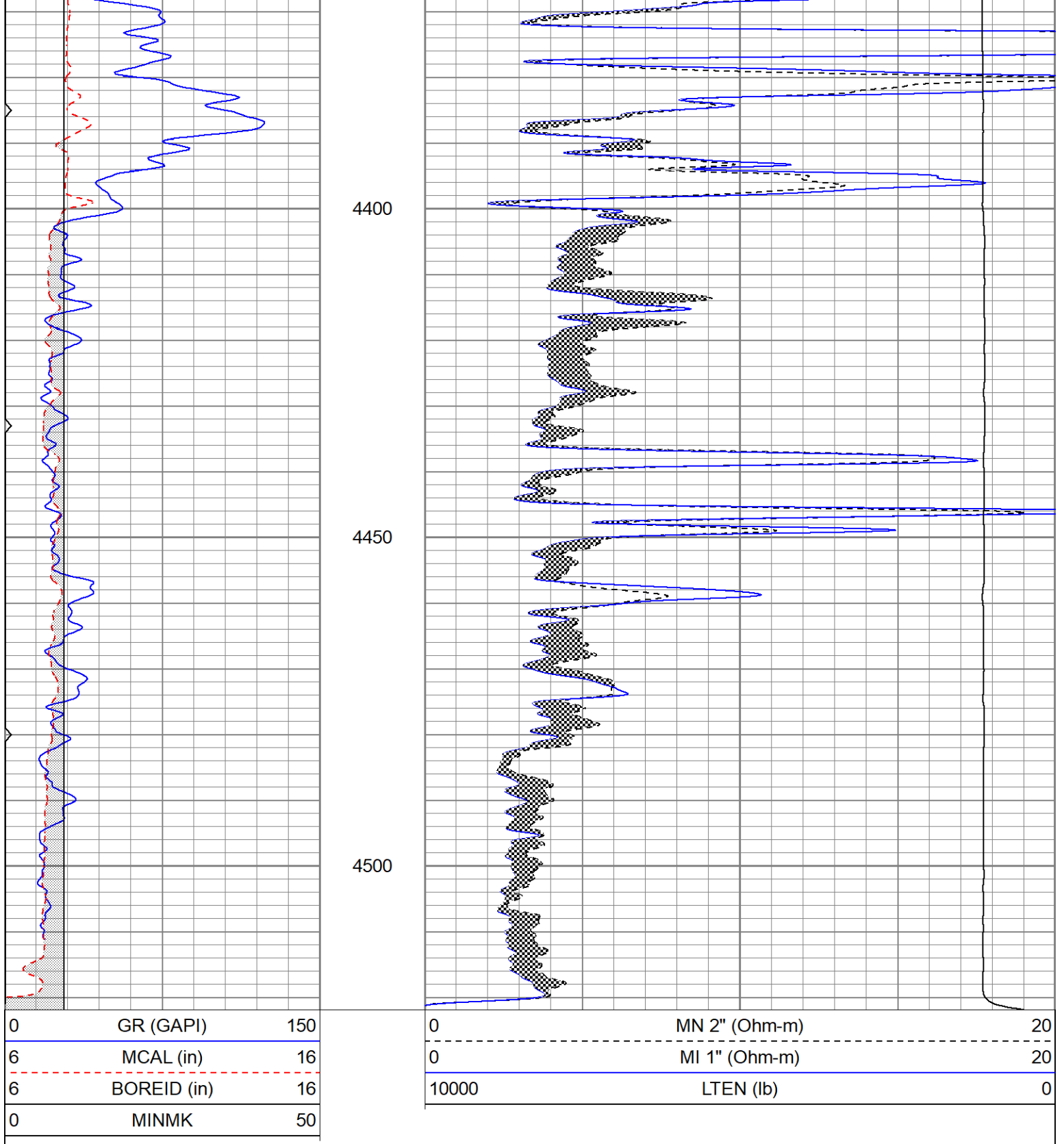
0	GR (GAPI)	150
6	MCAL (in)	16
6	BOREID (in)	16
0	MINMK	50

0	MN 2" (Ohm-m)	20
0	MI 1" (Ohm-m)	20
10000	LTEN (lb)	0



4350





Calibration Report

Database File ppgladiator#1oh.db
 Dataset Pathname pass4RP
 Dataset Creation Thu May 26 17:49:27 2022

Microlog Calibration Report

Serial-Model: 012-Pengo
 Performed: Thu May 26 17:37:23 2022

Readings

References

Results

	Zero	Cal		Zero	Cal		m	b
Normal	0.0033	0.0978	V	0.0000	10.0000	Ohm-m	105.8950	-0.3526
Inverse	0.0025	0.1257	V	0.0000	10.0000	Ohm-m	81.1712	-0.2044
Caliper	2.7578	4.6384	V	7.9000	14.0000	in	3.2437	-0.9053

Gamma Ray Calibration Report

Serial Number:	2001
Tool Model:	OH
Performed:	Sat Sep 4 22:48:39 2021
Calibrator Value:	1.0 GAPI
Background Reading:	0.0 cps
Calibrator Reading:	1.0 cps
Sensitivity:	0.9200 GAPI/cps