

Company PALOMINO PETROLEUM, INC. Well GLADIATOR #1 Field WILDCAT County TREGO State KANSAS	Company PALOMINO PETROLEUM, INC. Well GLADIATOR #1 Field WILDCAT County TREGO State KANSAS
Location: SEC 20 TWP 15S RGE 25W 733' FSL & 1897' FWL	API # : 15-195-23136 Other Services Elevation Permanent Datum GROUND LEVEL Elevation 2459' Log Measured From KELLY BUSHING 8' A.G.L. Drilling Measured From KELLY BUSHING G.L. 2459'

Date	JUNE 2, 2022	
Run Number	ONE	
Depth Driller	4520'	
Depth Logger	4466'	
Bottom Logged Interval	4465'	
Top Log Interval	150'	
Open Hole Size	///	
Type Fluid	WATER	
Density / Viscosity	///	
Max. Recorded Temp.	110F	
Estimated Cement Top	0	
Time Well Ready	///	
Time Logger on Bottom	///	
Equipment Number	PT-09	
Location	HAYS	
Recorded By	BOB KLAUS	
Witnessed By	JOE RUPP	

Borehole Record		Tubing Record					
Run Number	Bit	From	To	Size	Weight	From	To
ONE	12.25"	0	230'	230'			
TWO	7.875"	230'	4520'				

Casing Record		Surface String		Production String	
Record	Size	Wgt/Ft	Top	Bottom	
Surface String	8 5/8"		0	230'	
Production String	5 1/2"	14#	0	4512'	

<<< Fold Here >>>

All interpretations are opinions based on inferences from electrical or other measurements and we cannot and do not guarantee the accuracy or correctness of any interpretation, and we shall not, except in the case of gross or willful negligence on our part, be liable or responsible for any loss, costs, damages, or expenses incurred or sustained by anyone resulting from any interpretation made by any of our officers, agents or employees. These interpretations are also subject to our general terms and conditions set out in our current Price Schedule.

Comments

THANK YOU FOR USING
 PERF-TECH WIRELINE SERVICES, INC.
 785-628-3969

DIRECTIONS: UTICA, Ks
 EAST to F Rd, NORTH to curve,
 1/2 EAST, NORTH into

Database File: june22209.db
 Dataset Pathname: pass3
 Presentation Format: 3x5
 Dataset Creation: Thu Jun 02 08:34:08 2022 by Log Std Casedhole 06040
 Charted by: Depth in Feet scaled 1:240

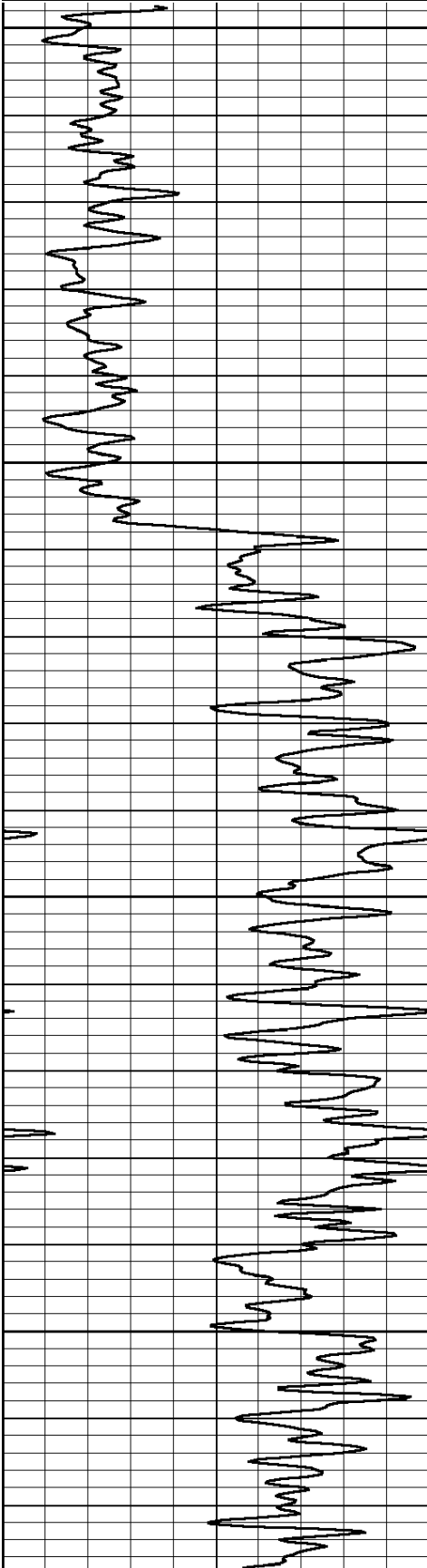
0 Gamma Ray (GAPI) 150

0 3' AMPLITUDE (mV) 100

200 5' Variable Density 1100

475 3' TRAVEL TIME (usec) 235

9 Collar Locator -1

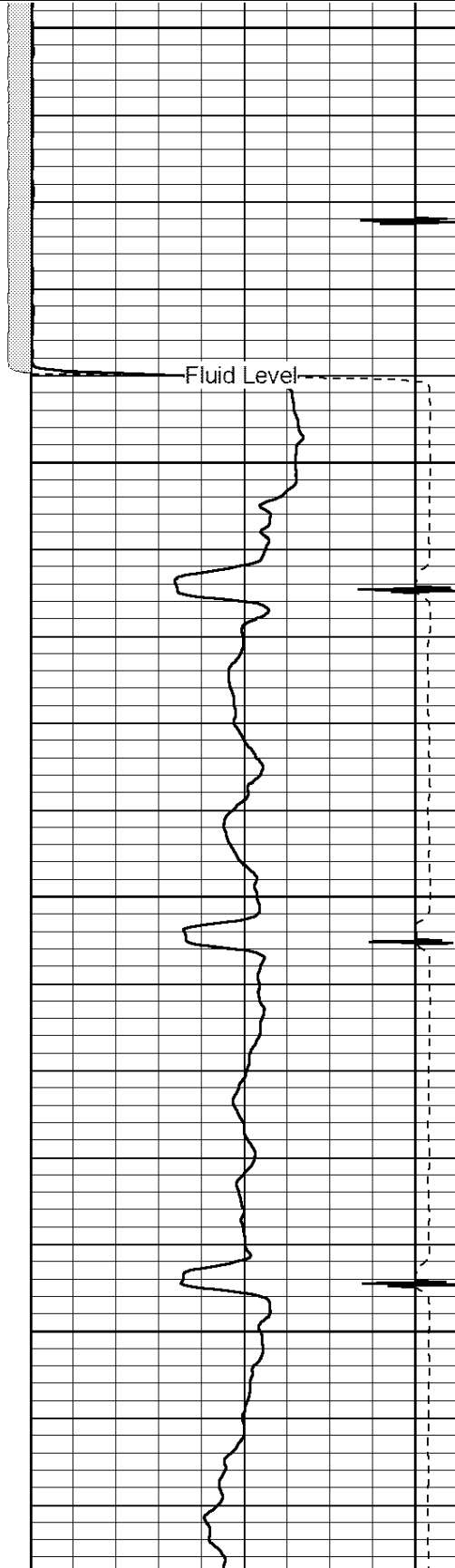


150

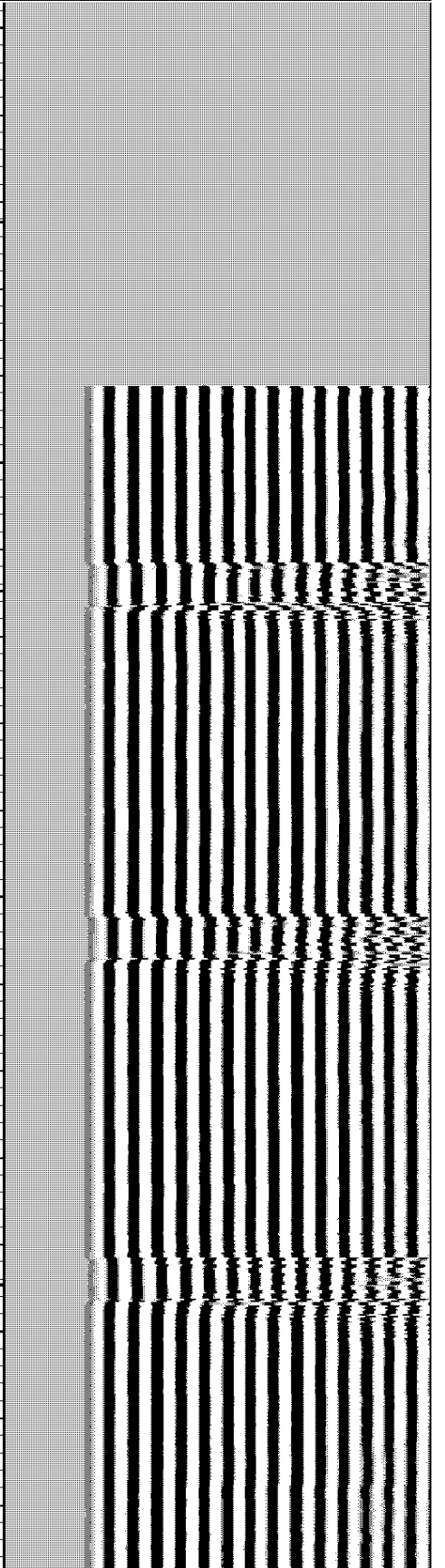
200

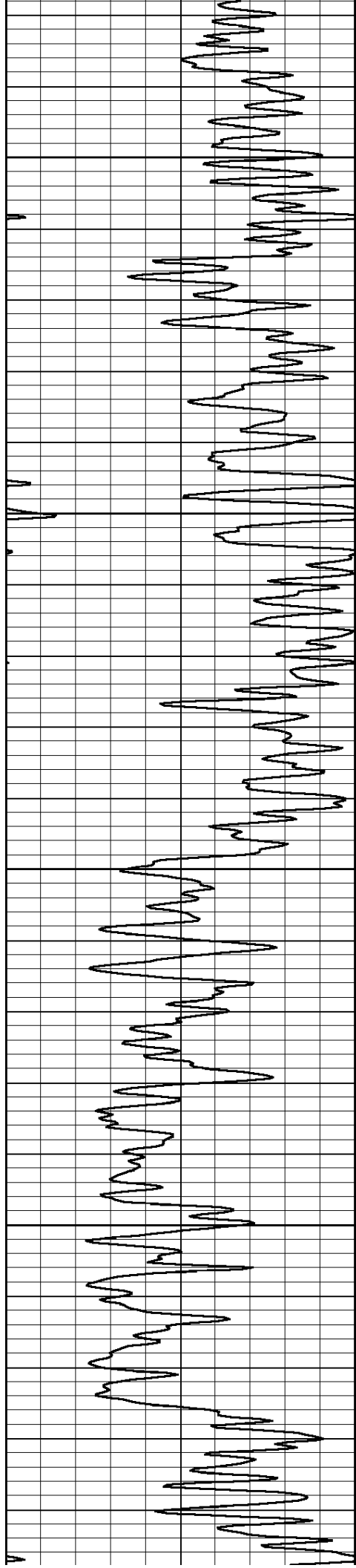
250

300



Fluid Level



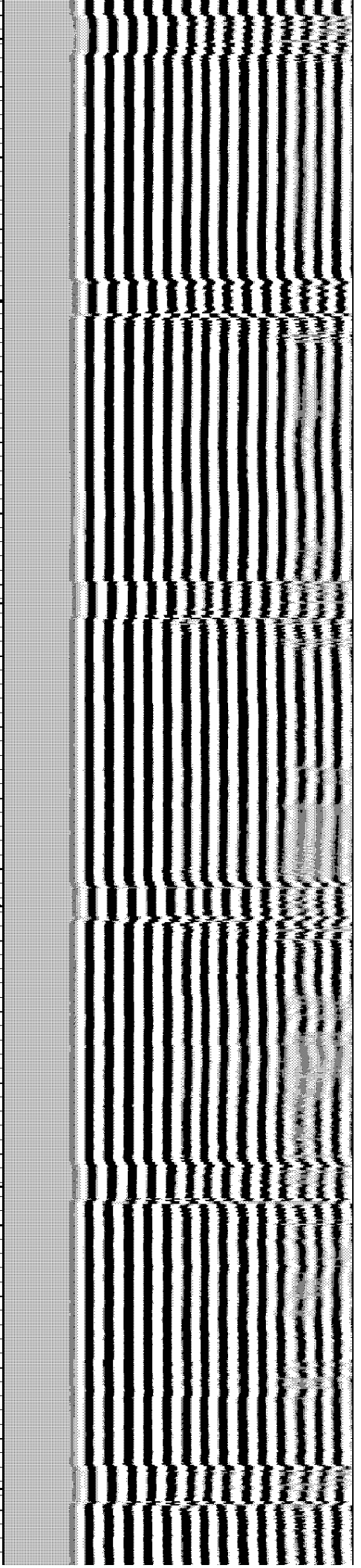
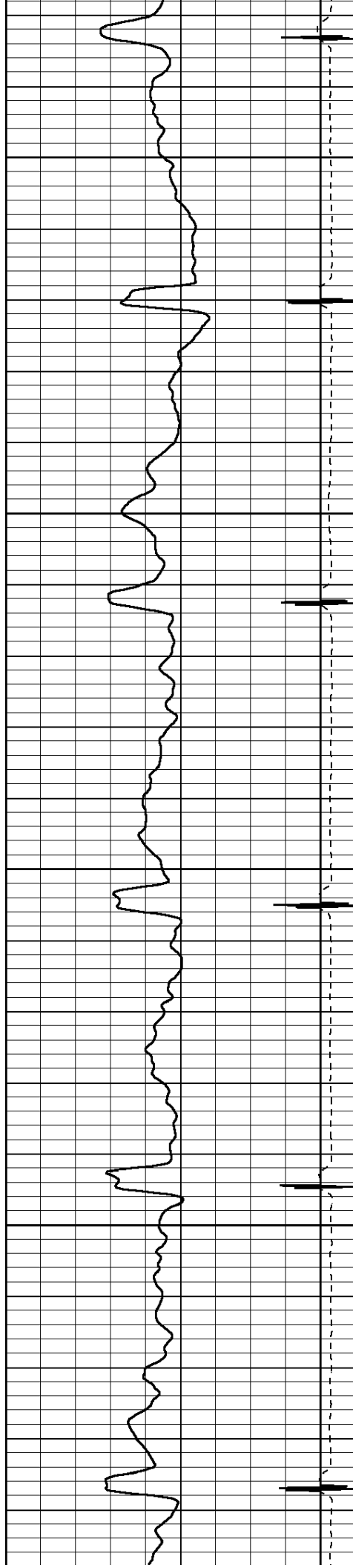


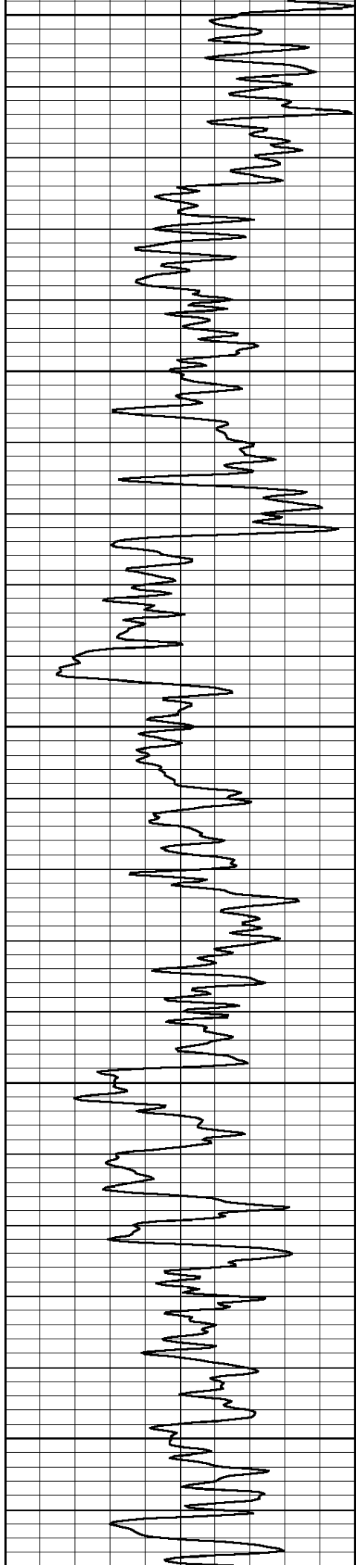
350

400

450

500





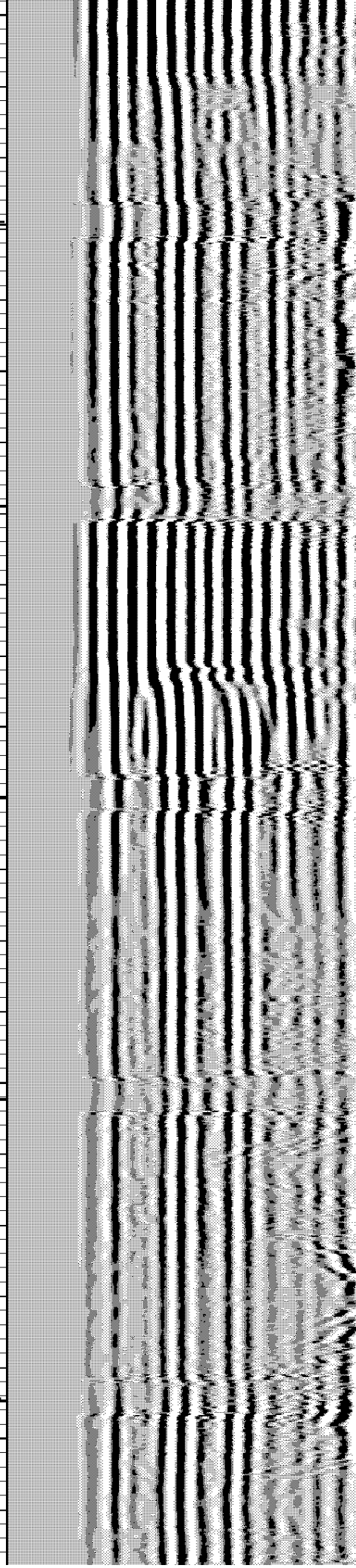
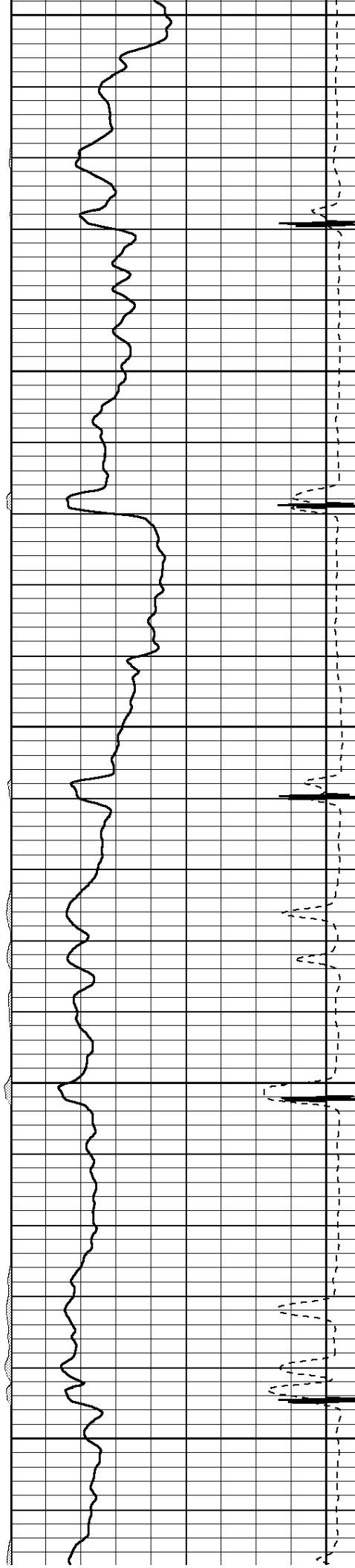
550

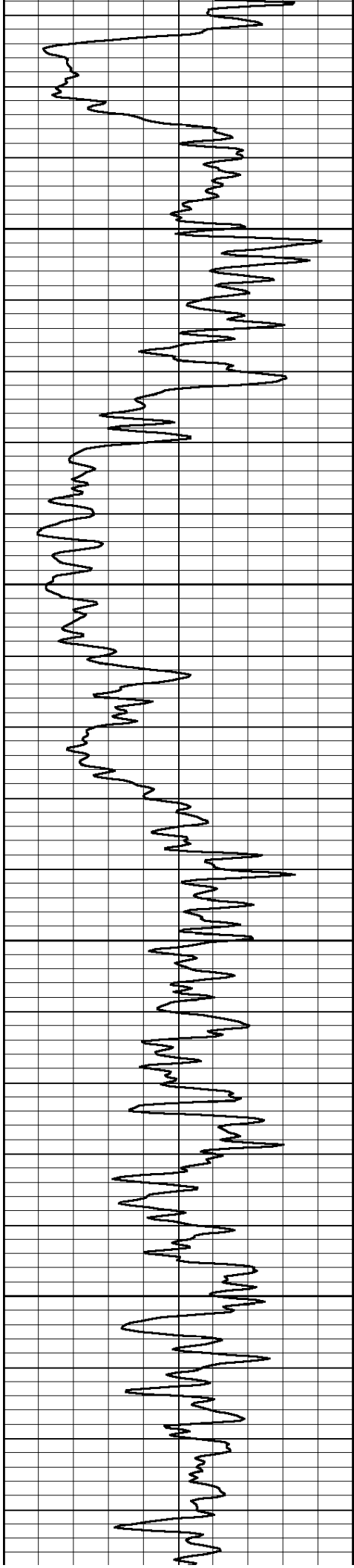
600

650

700

750



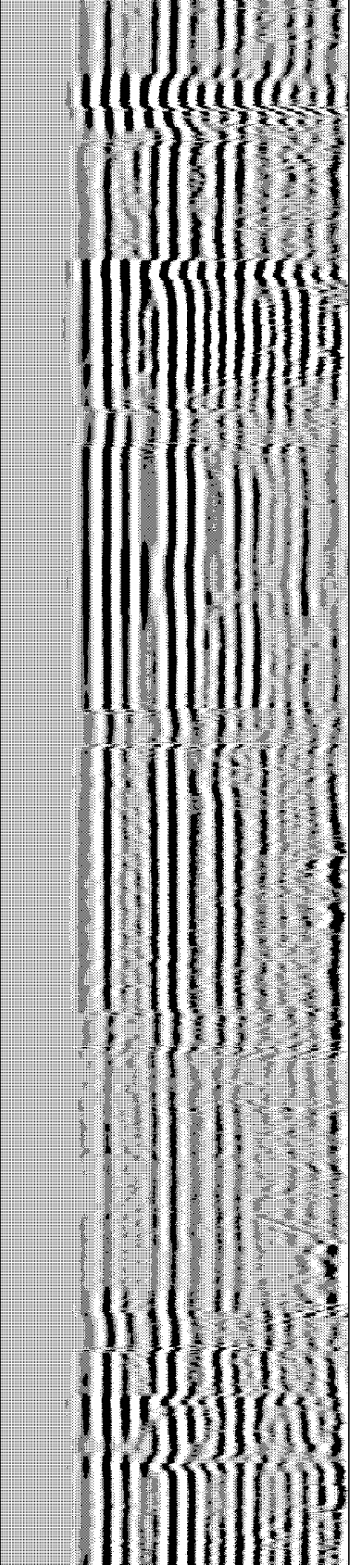
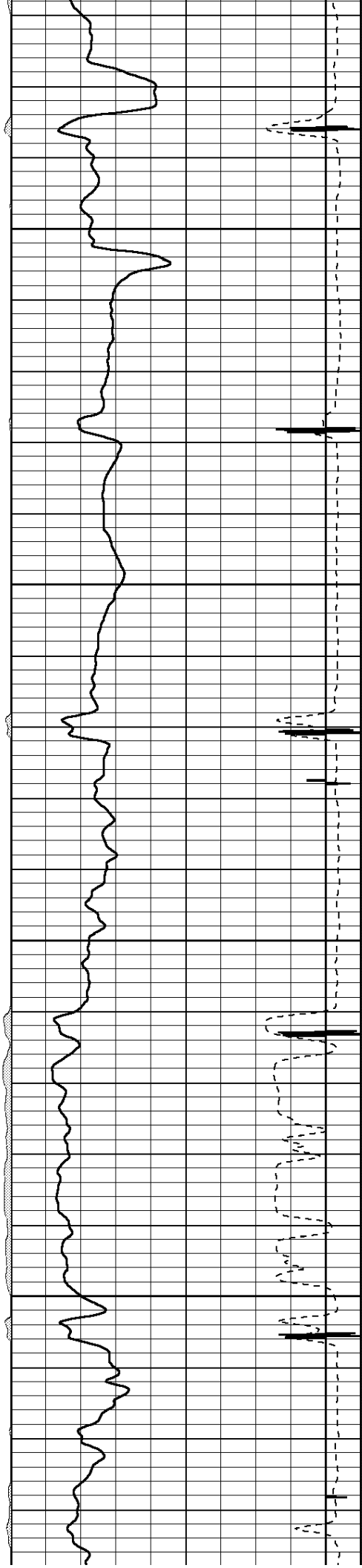


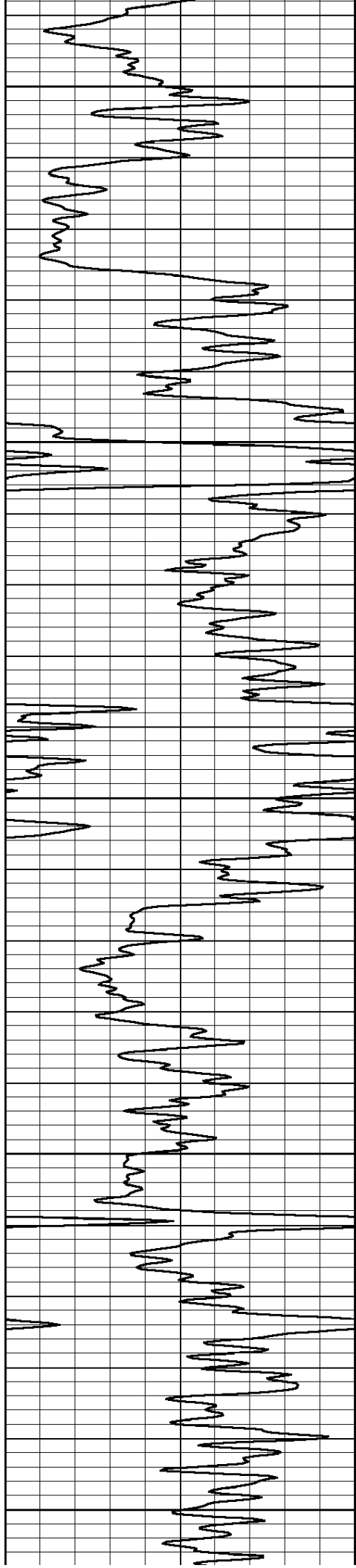
800

850

900

950





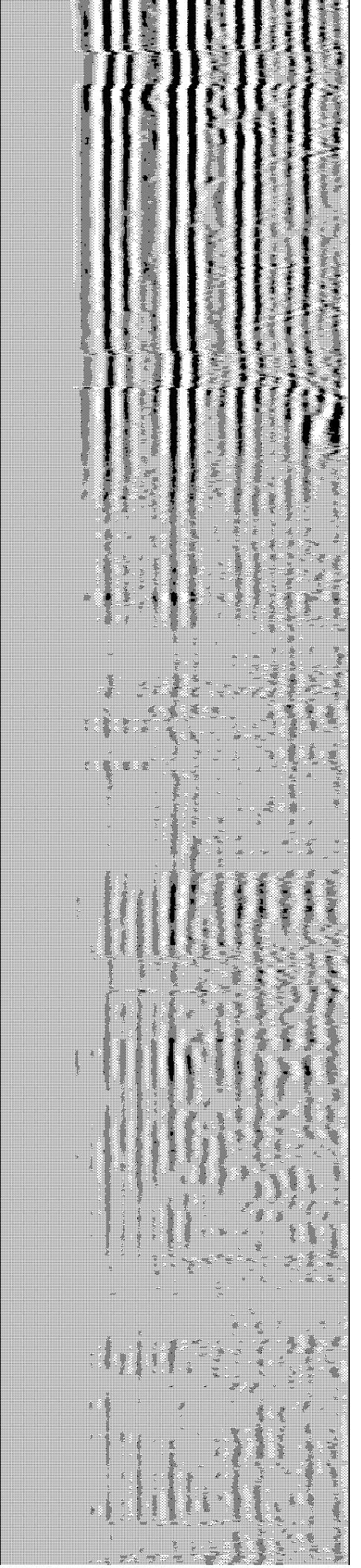
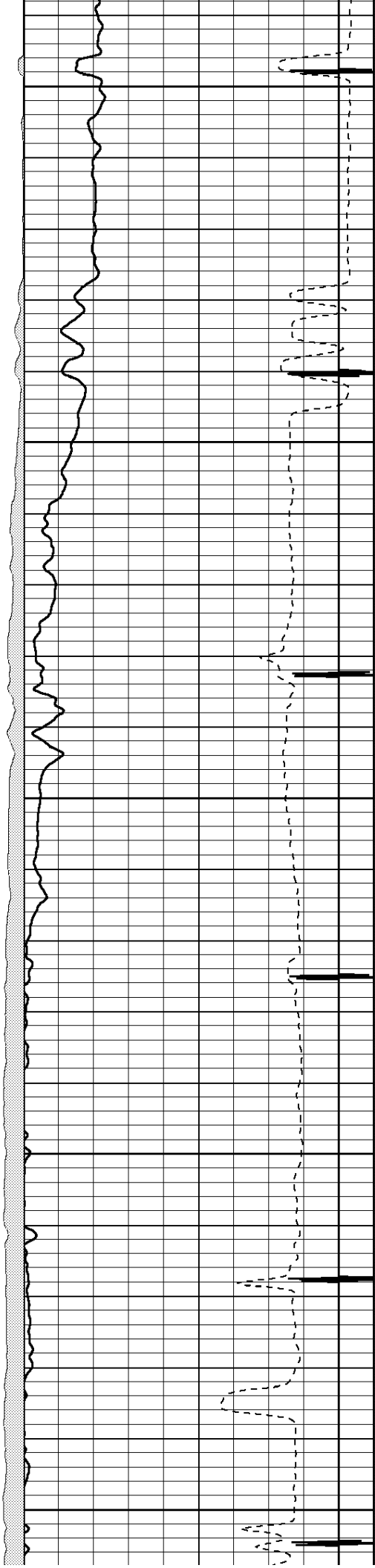
1000

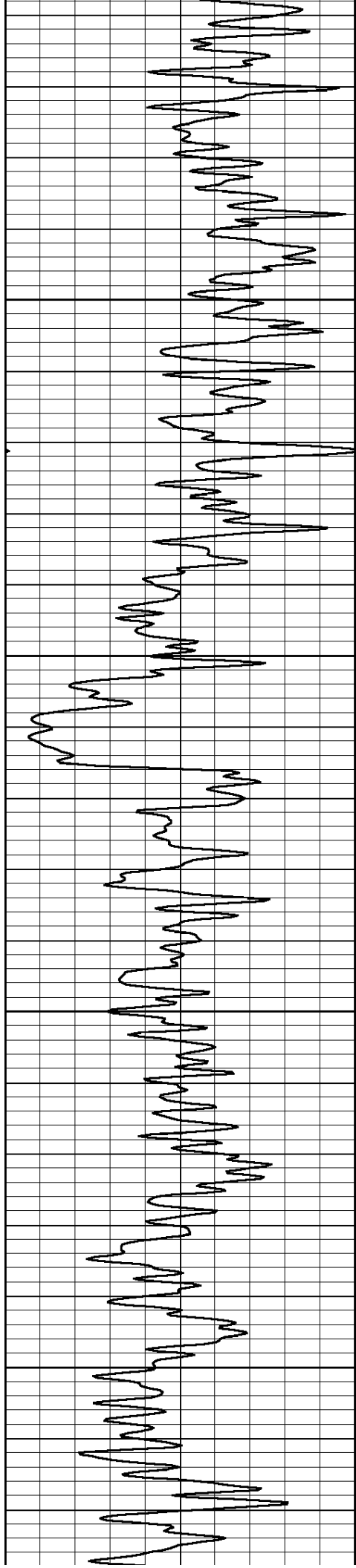
1050

1100

1150

1200



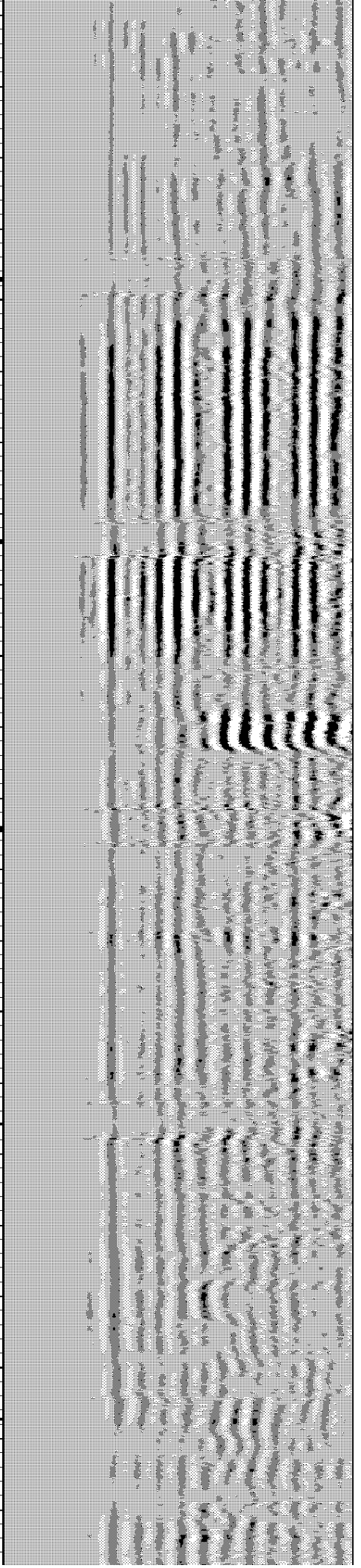
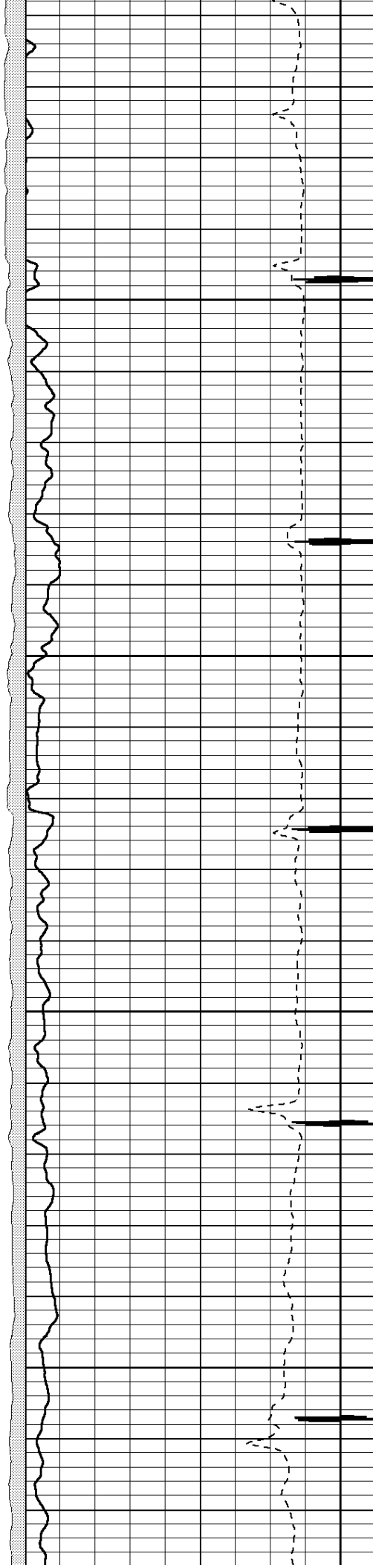


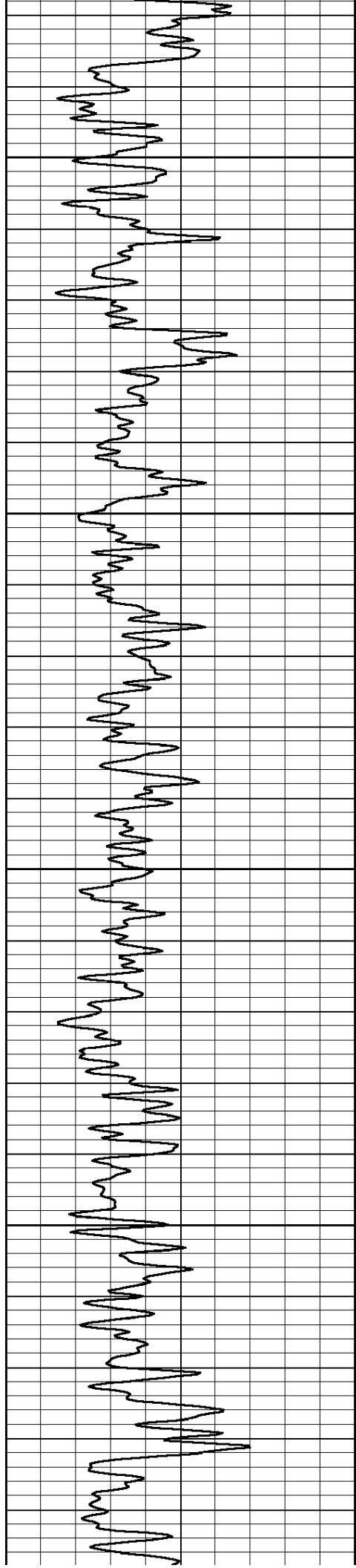
1250

1300

1350

1400



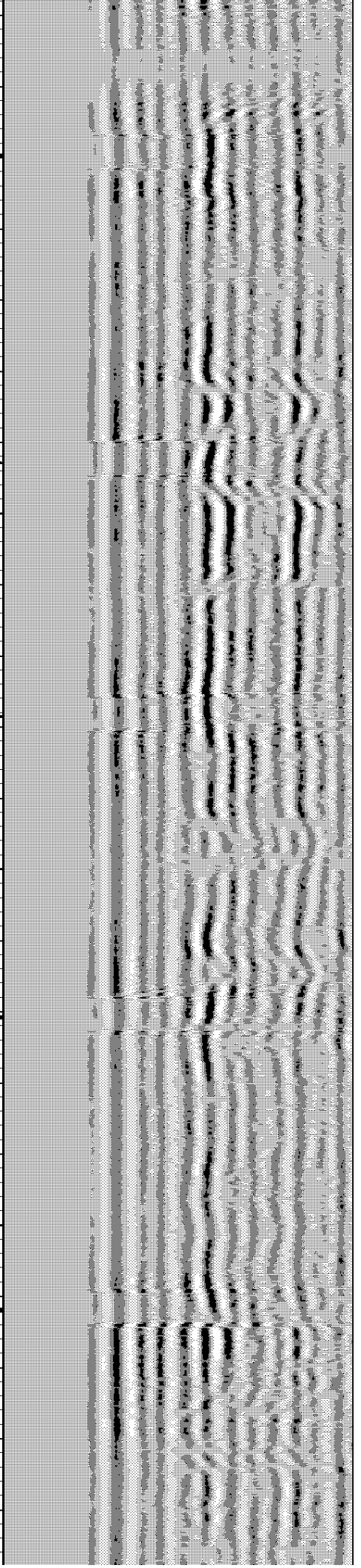
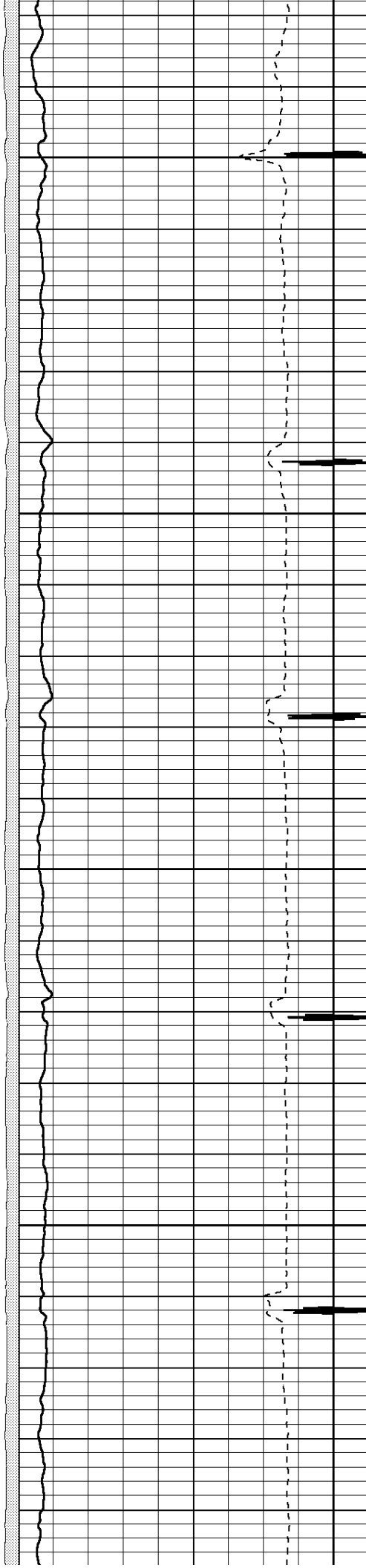


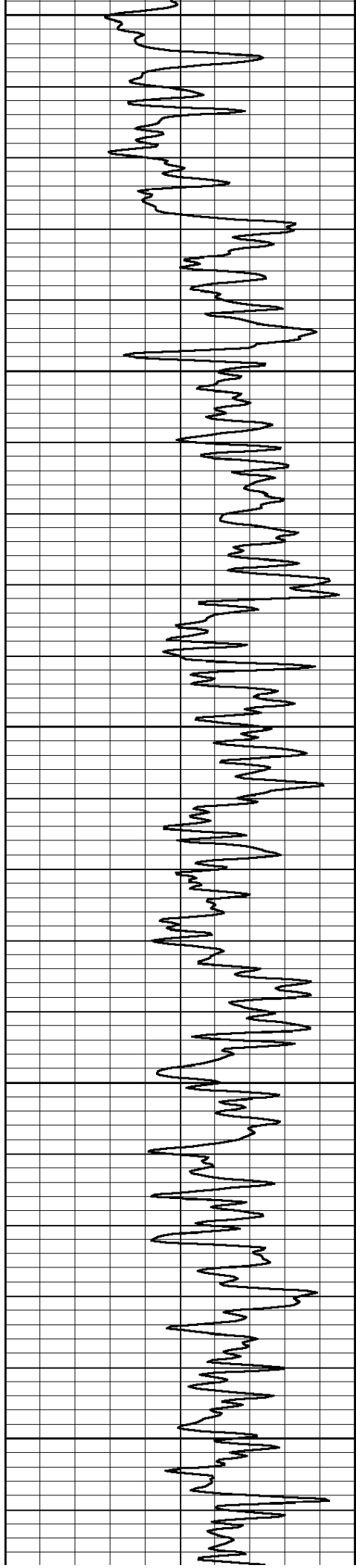
1450

1500

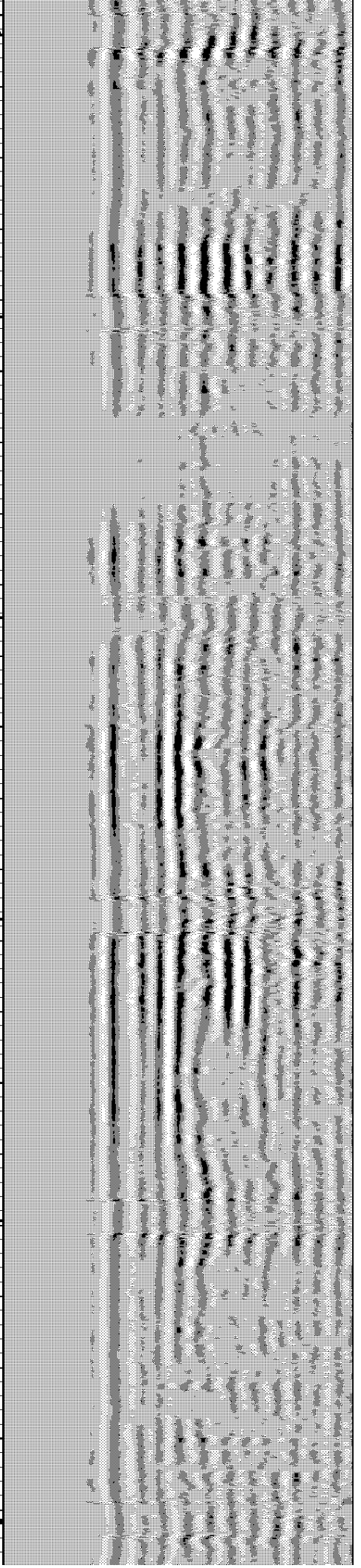
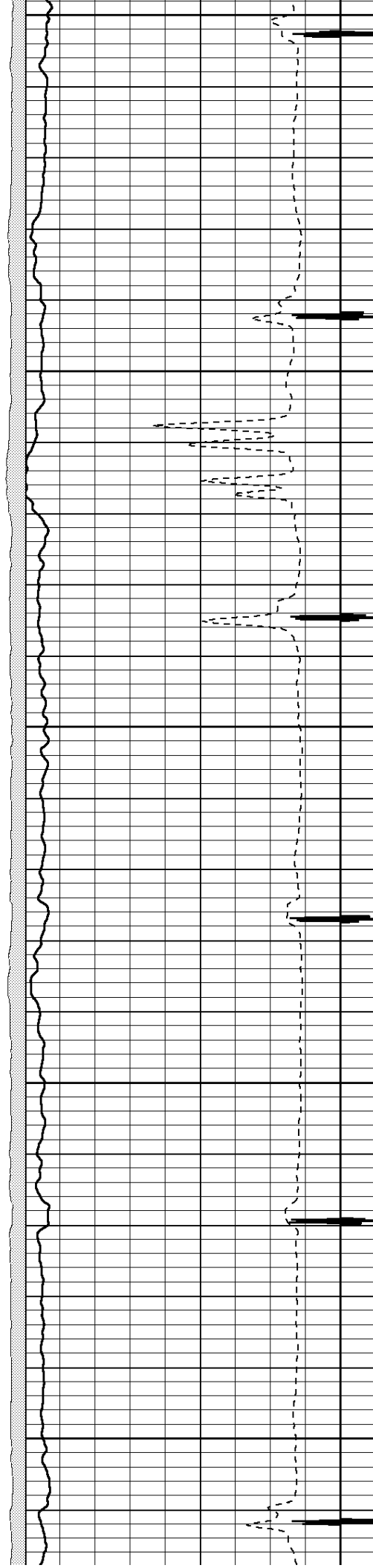
1550

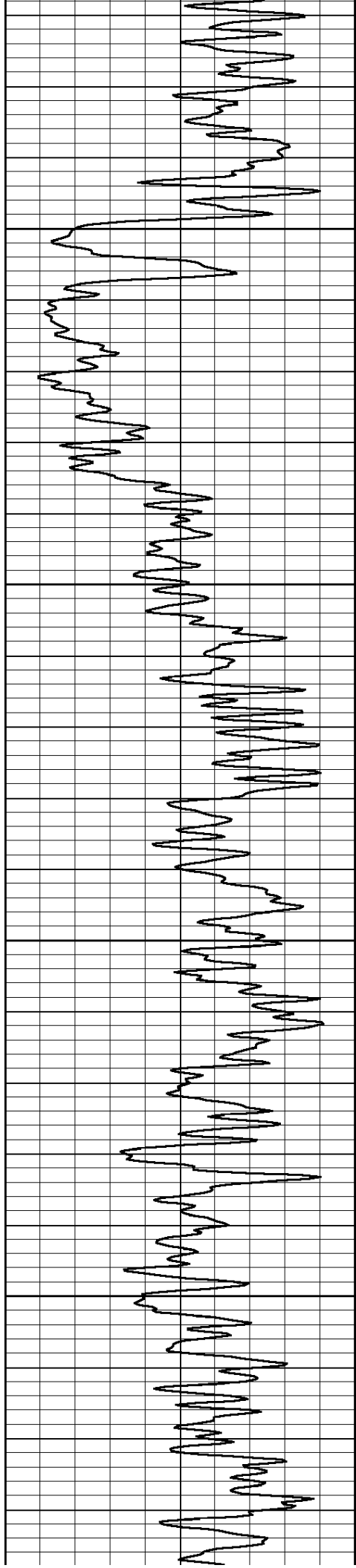
1600





1650
1700
1750
1800
1850



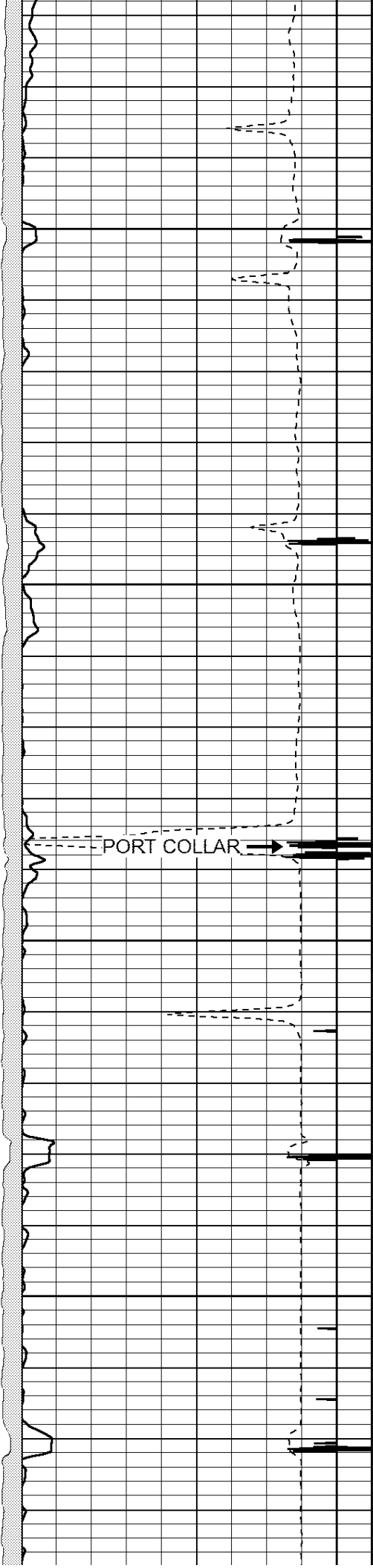


1900

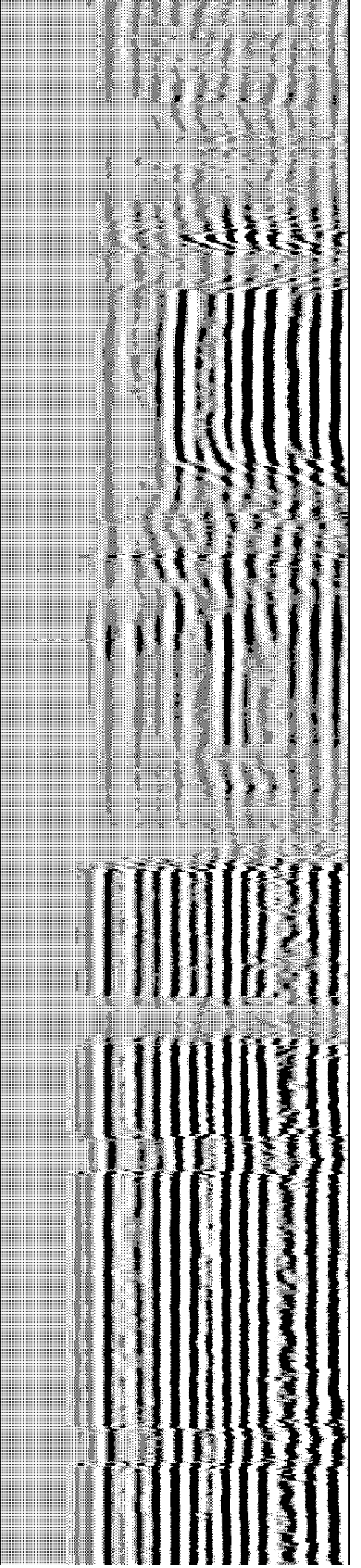
1950

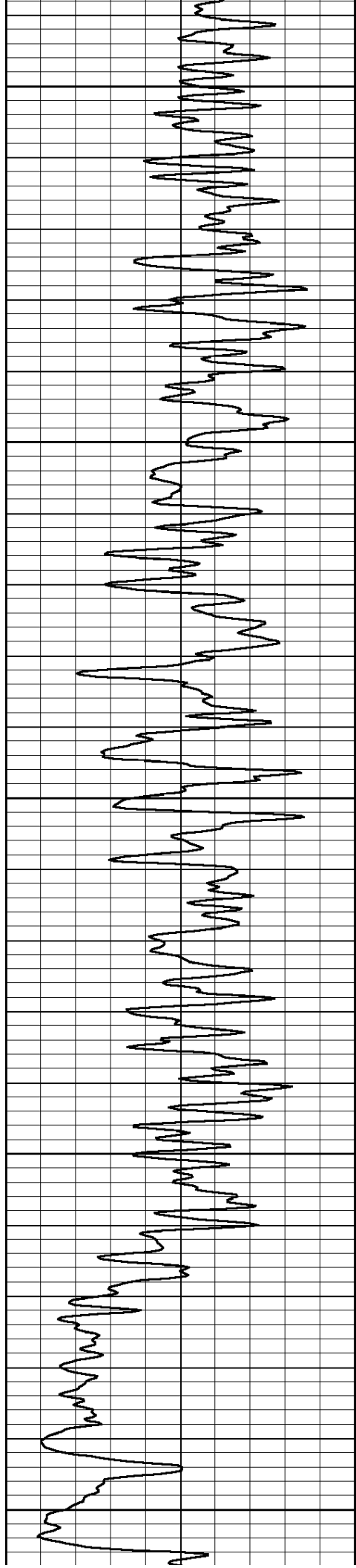
2000

2050



PORT COLLAR →





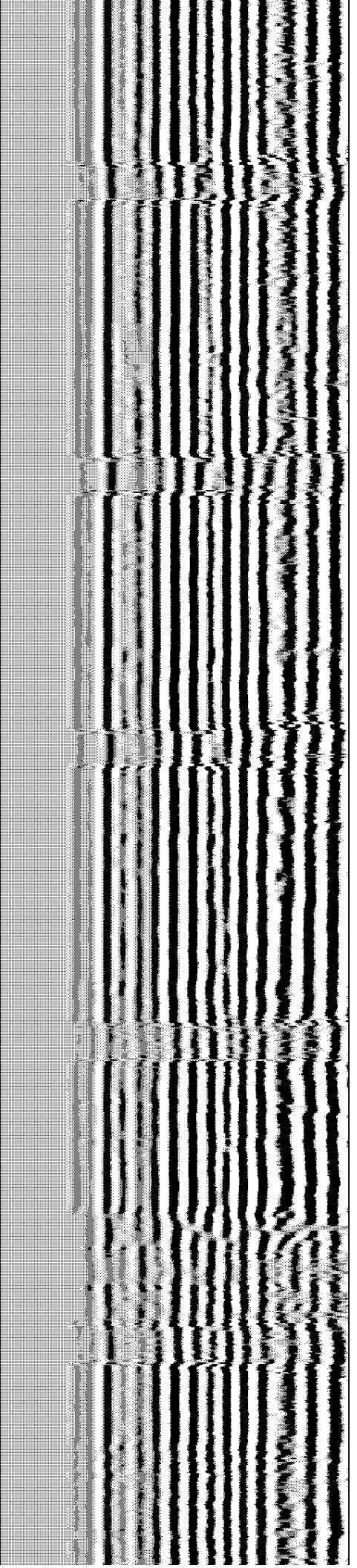
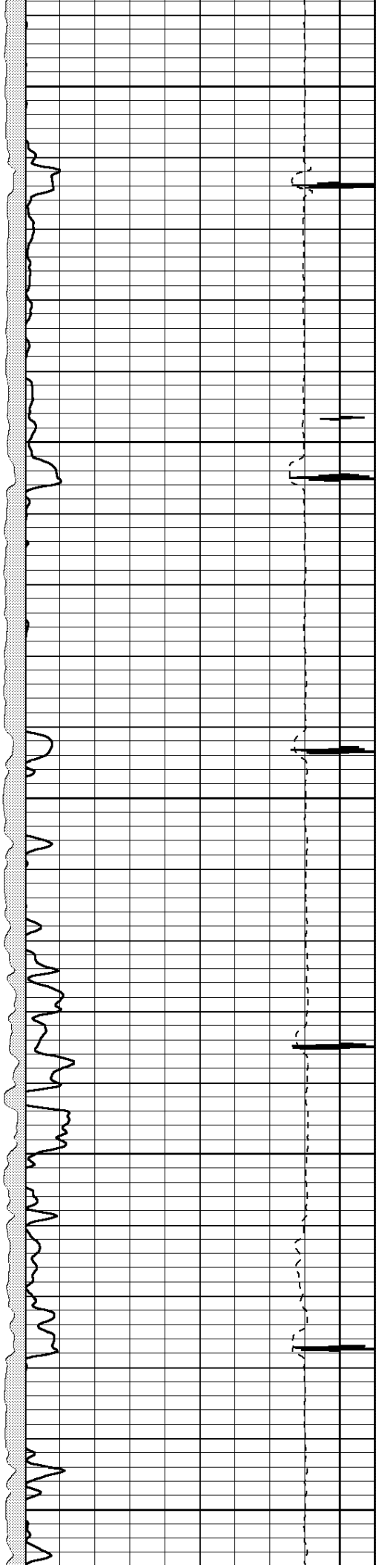
2100

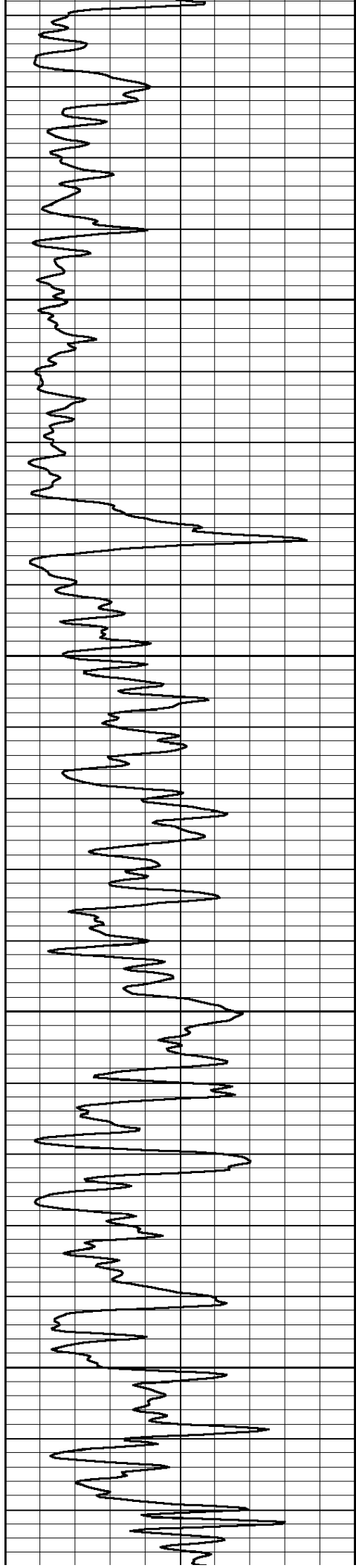
2150

2200

2250

2300



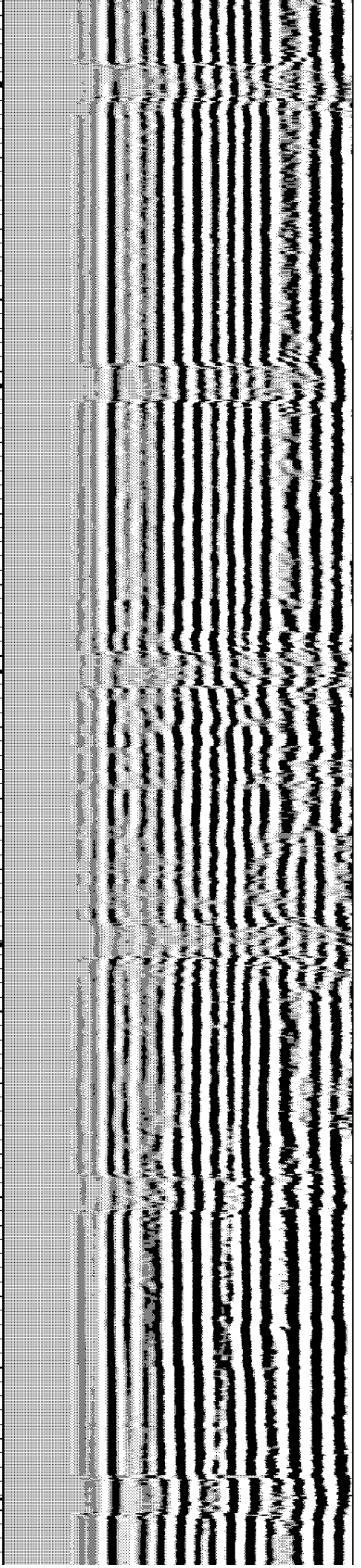
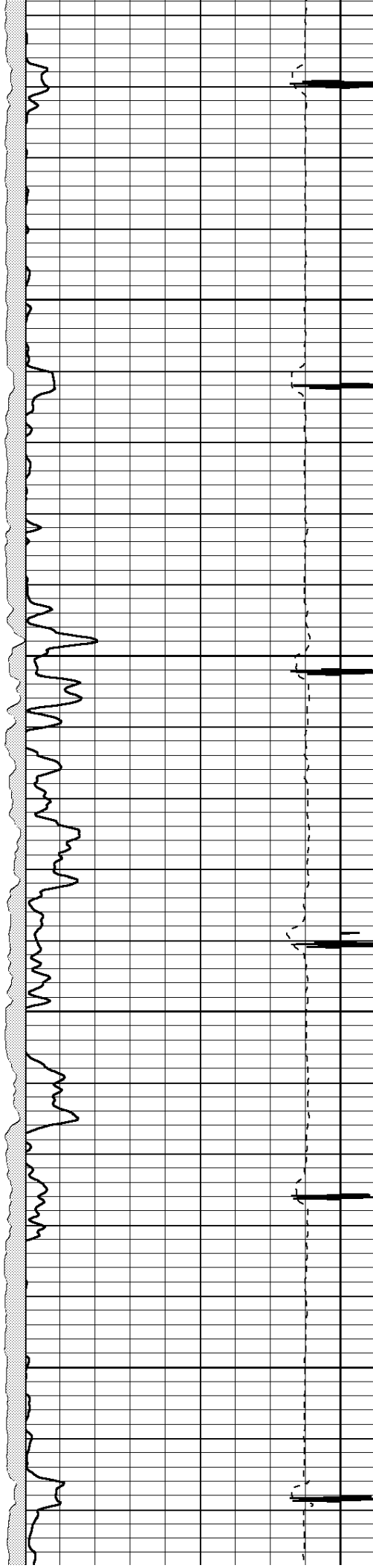


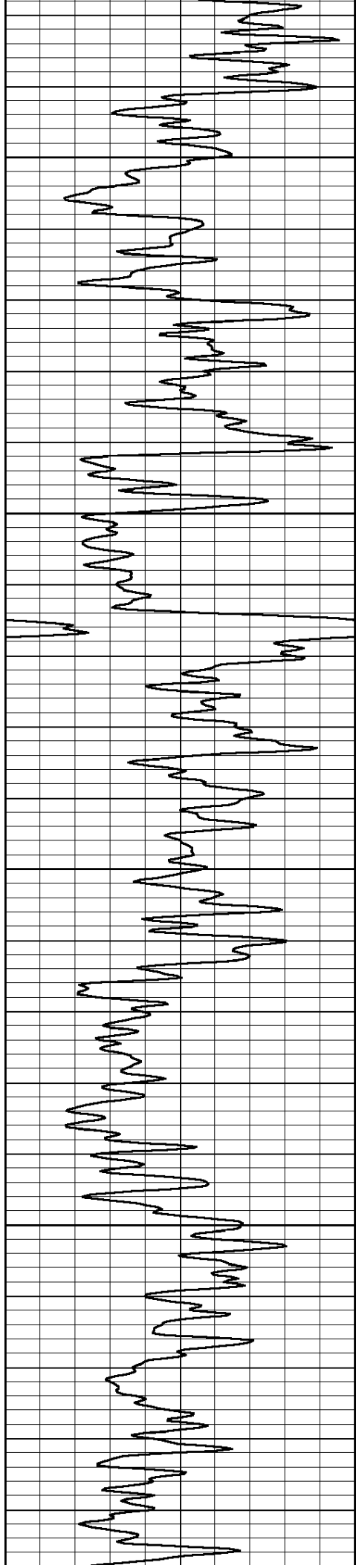
2350

2400

2450

2500



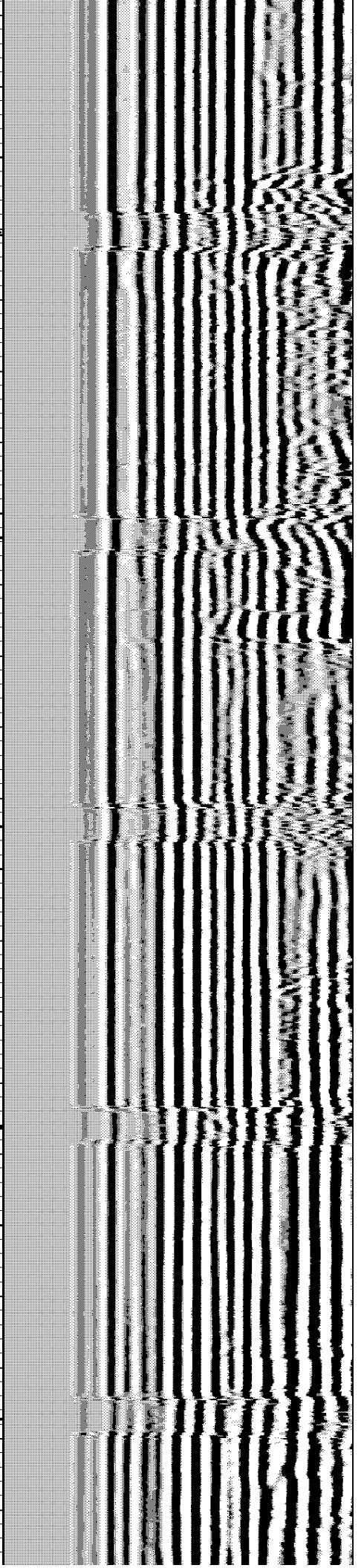
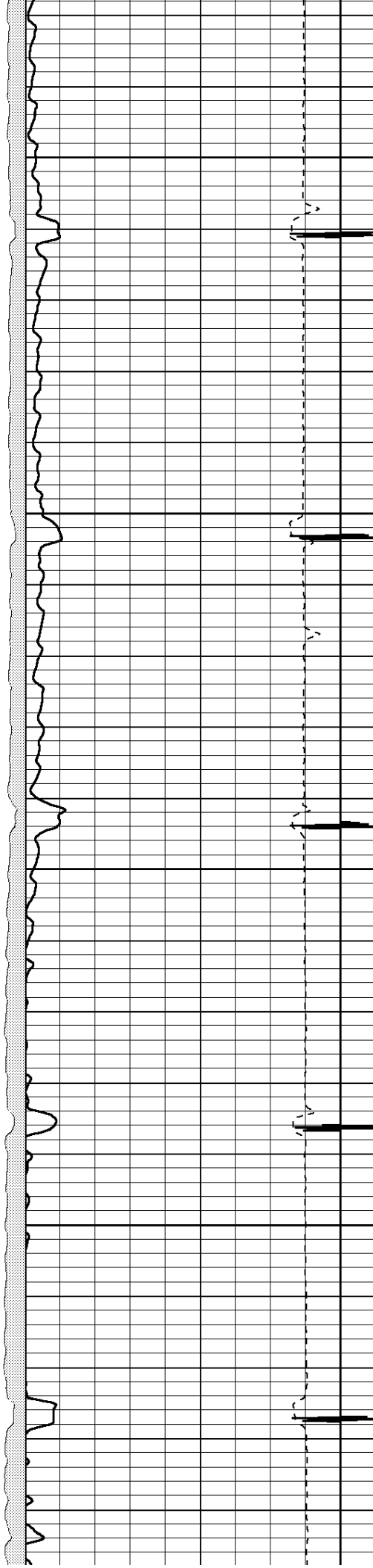


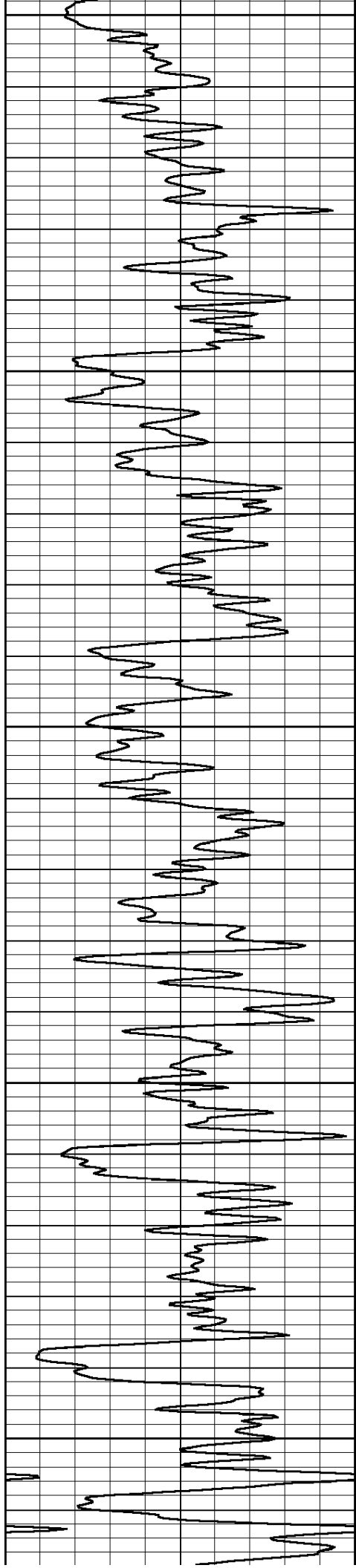
2550

2600

2650

2700





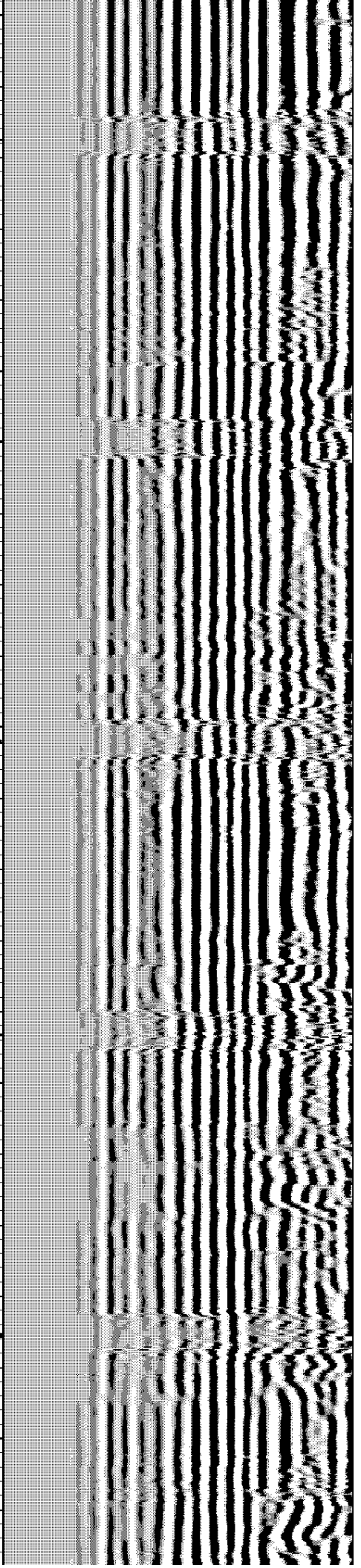
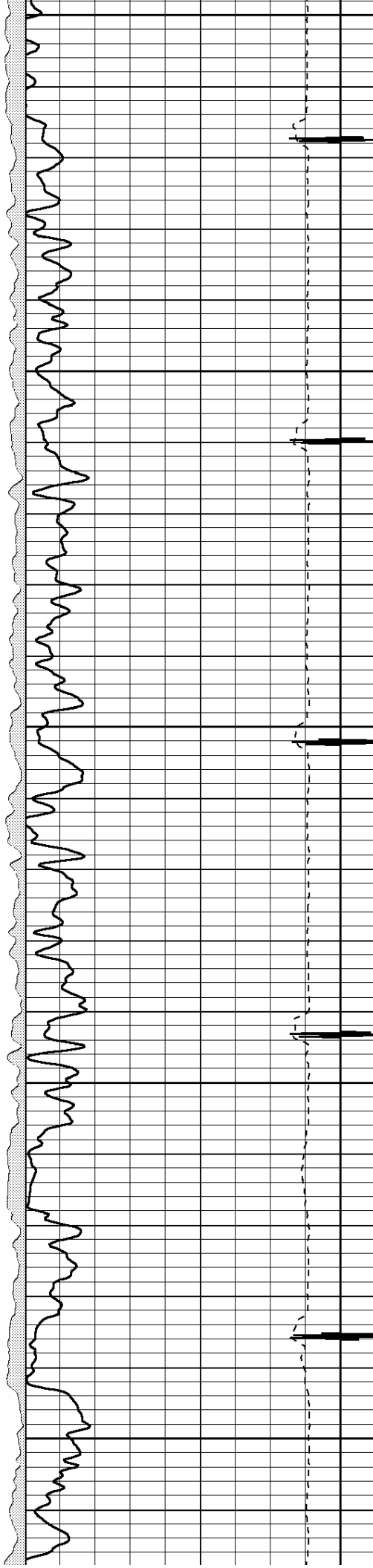
2750

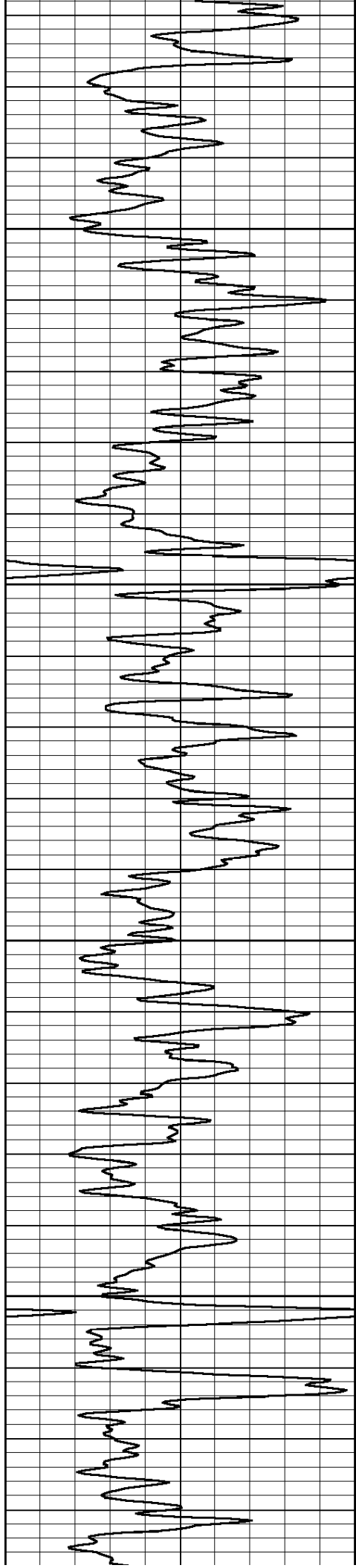
2800

2850

2900

2950



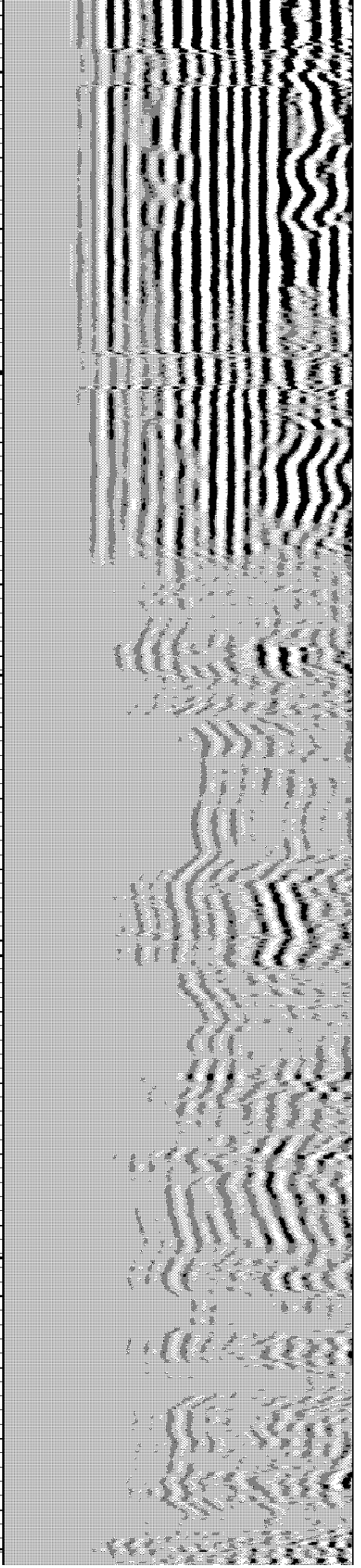
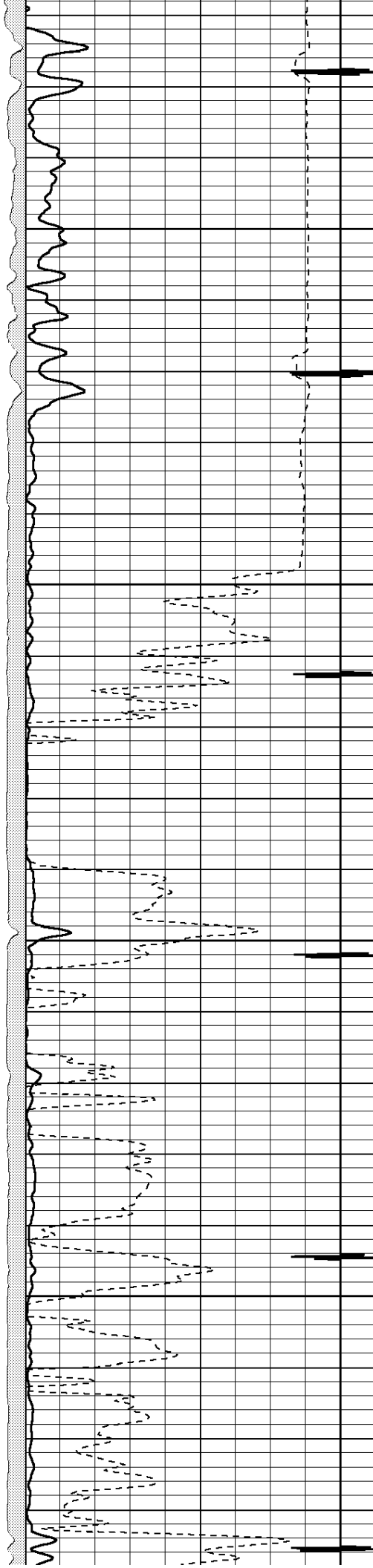


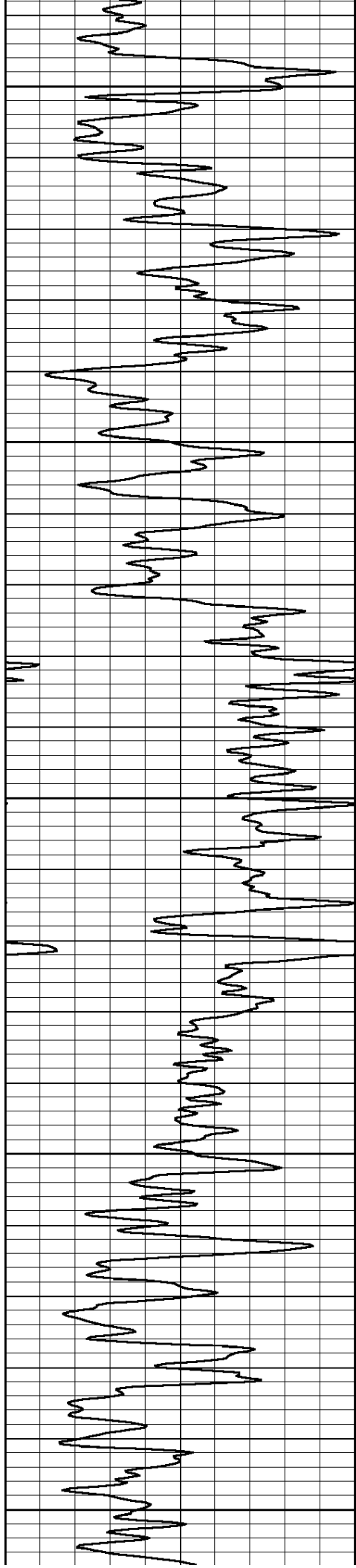
3000

3050

3100

3150





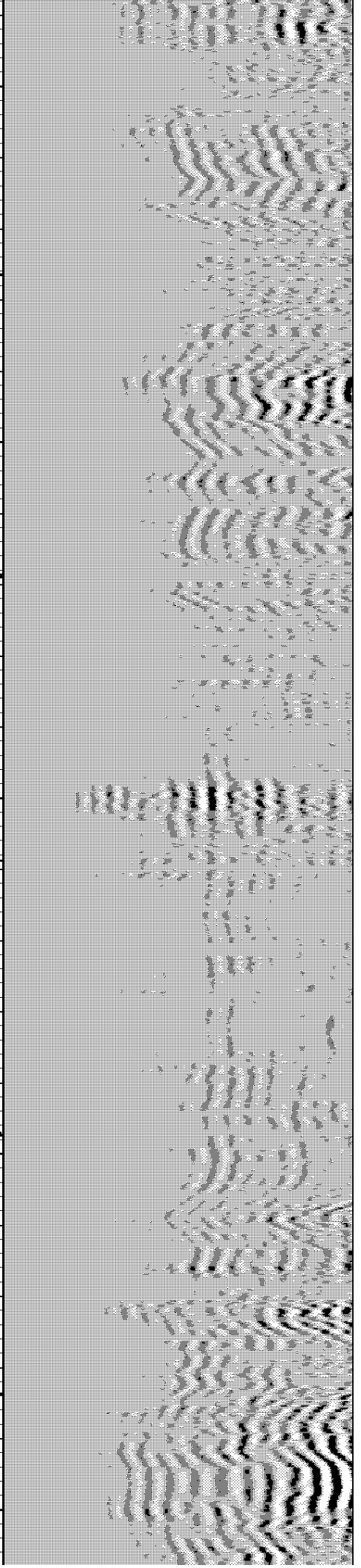
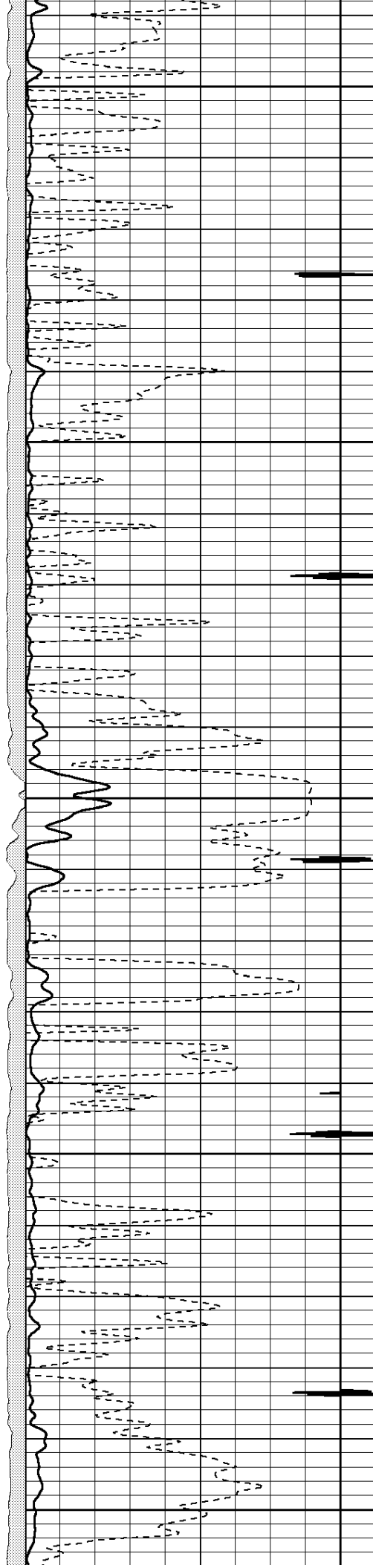
3200

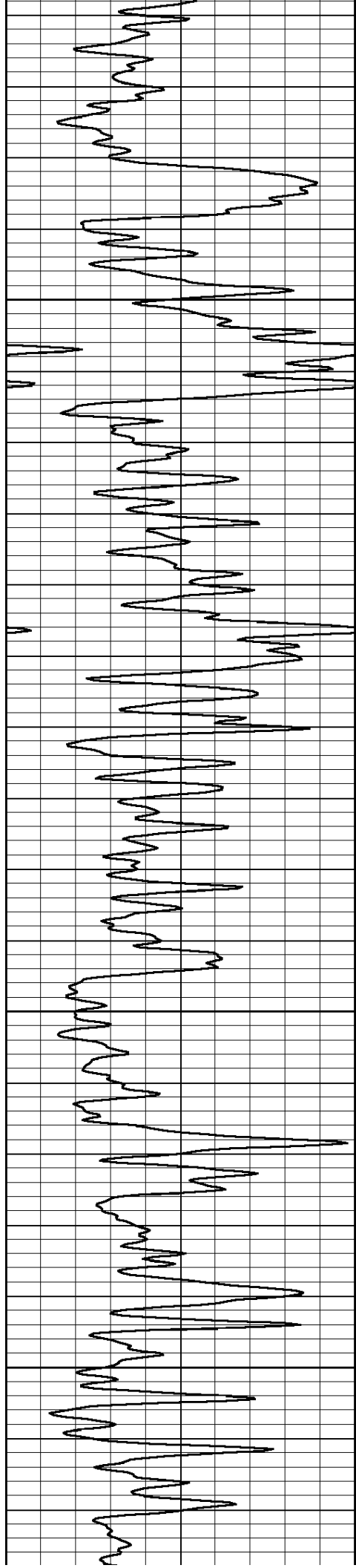
3250

3300

3350

3400



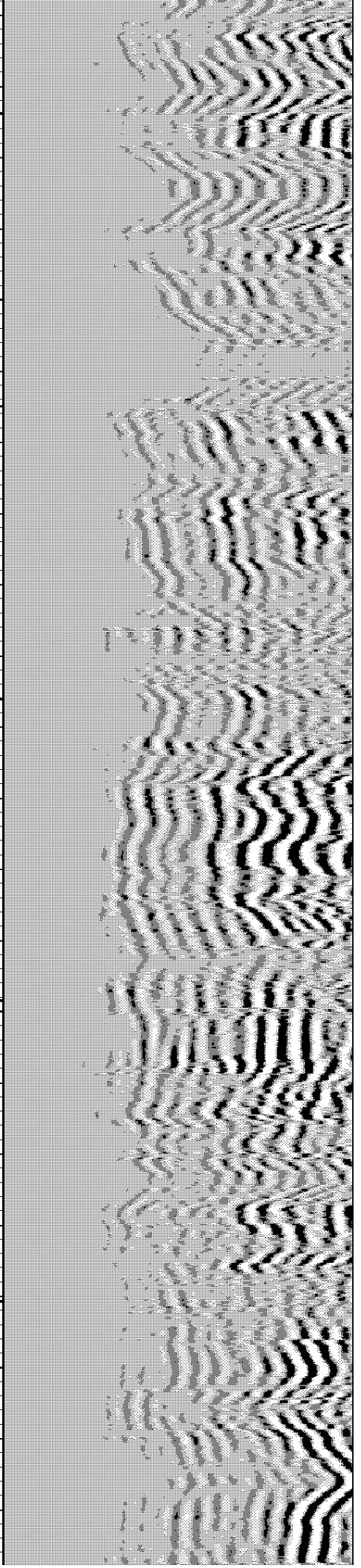
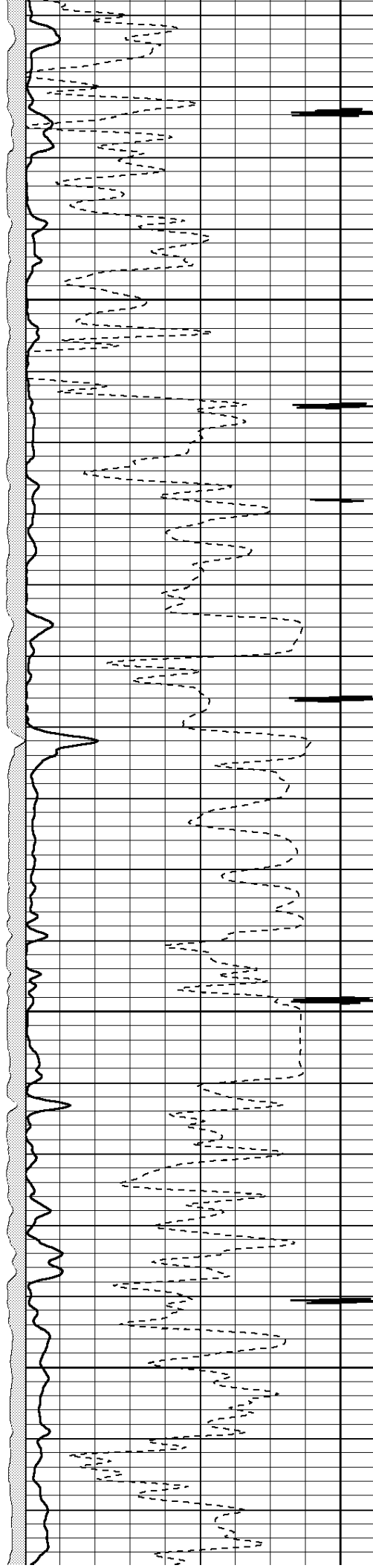


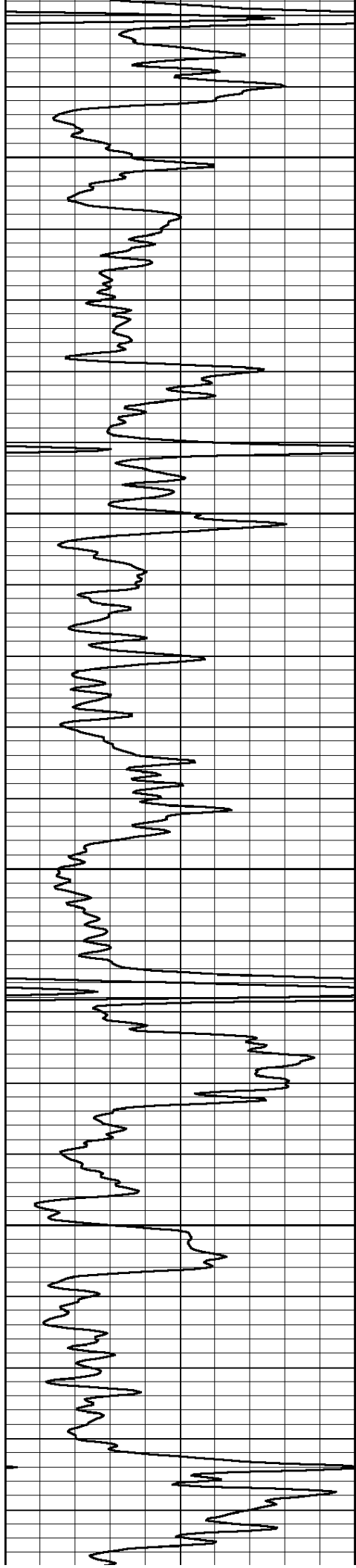
3450

3500

3550

3600



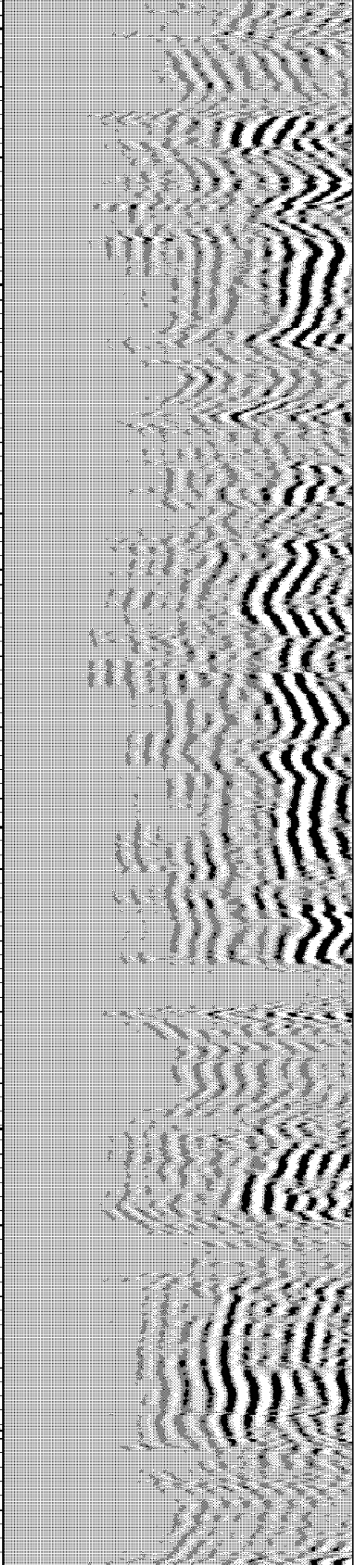
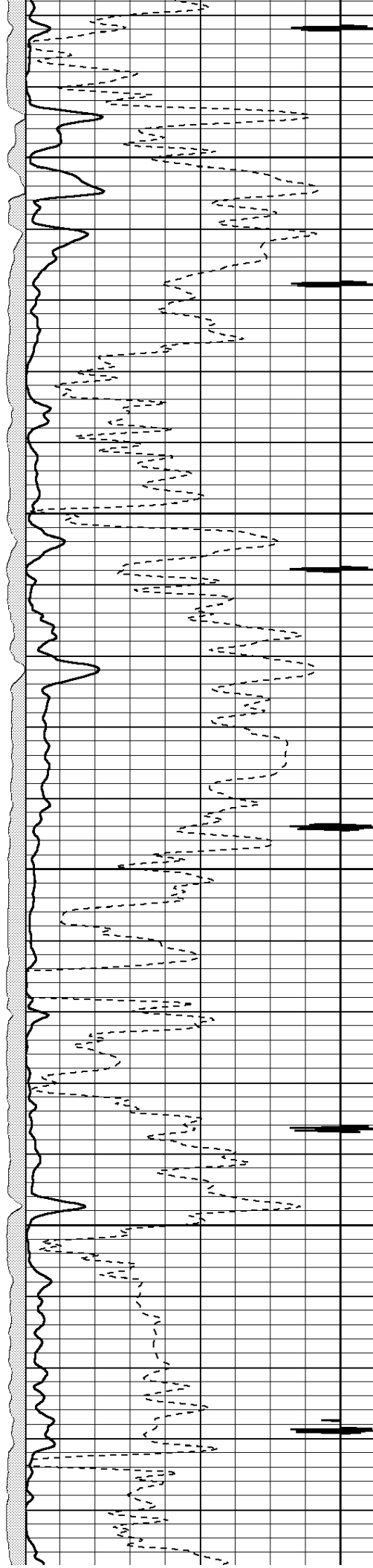


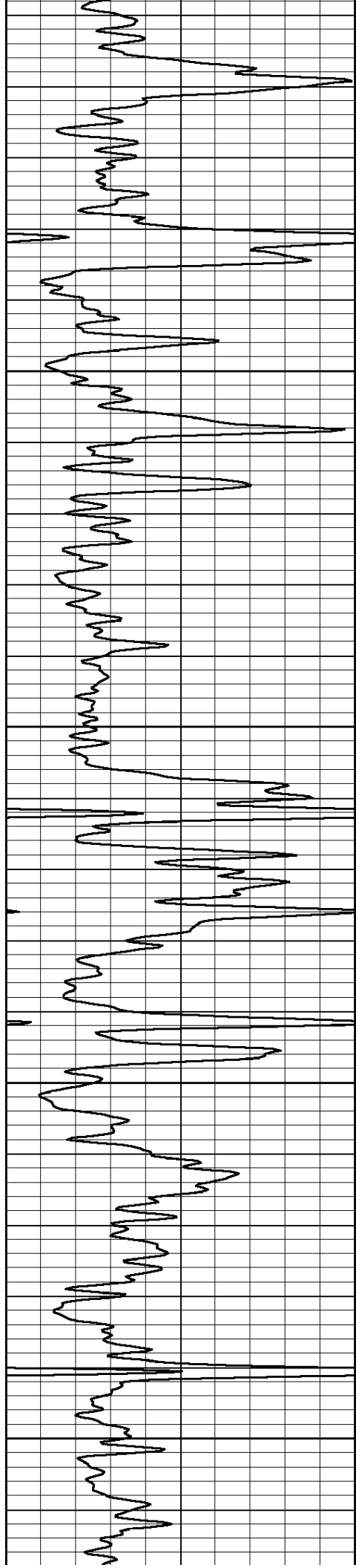
3650

3700

3750

3800





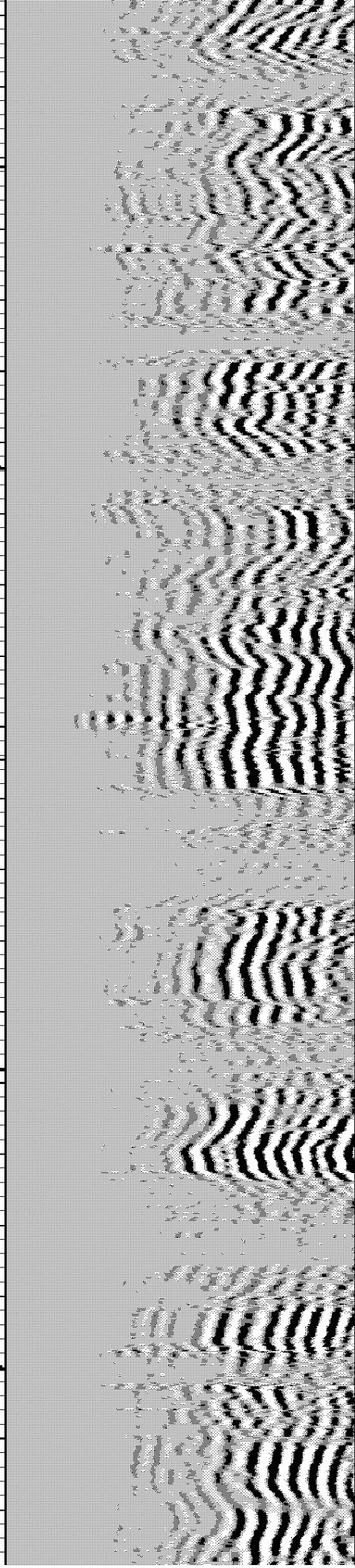
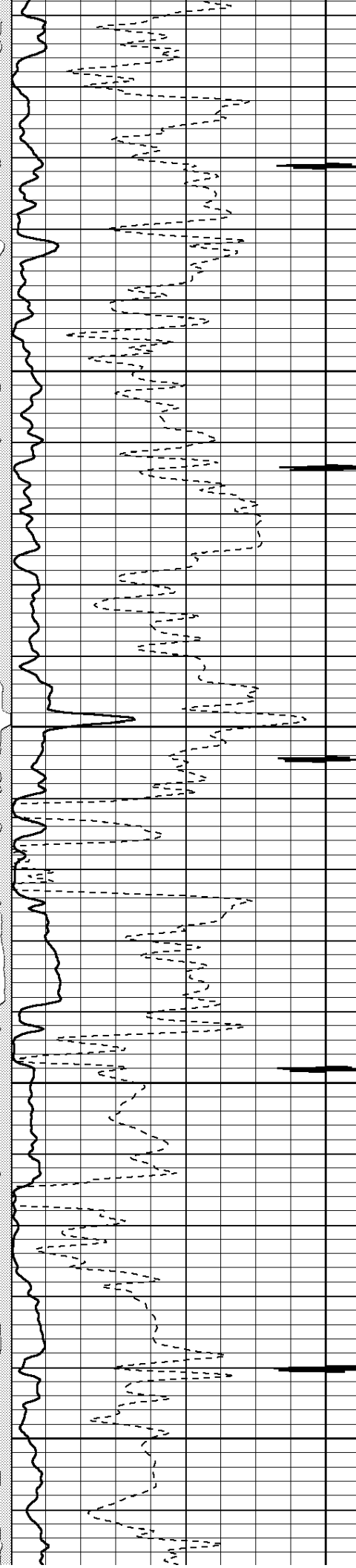
3850

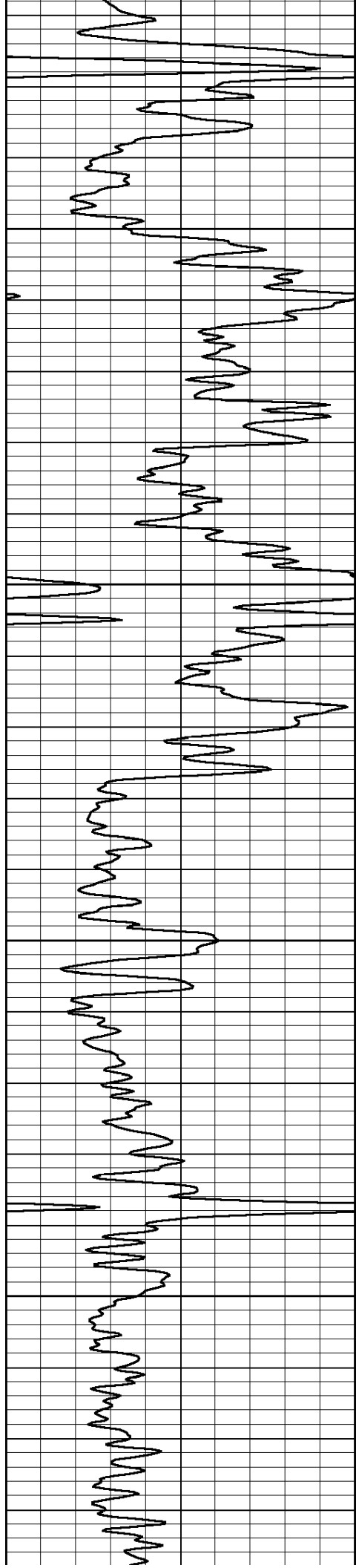
3900

3950

4000

4050



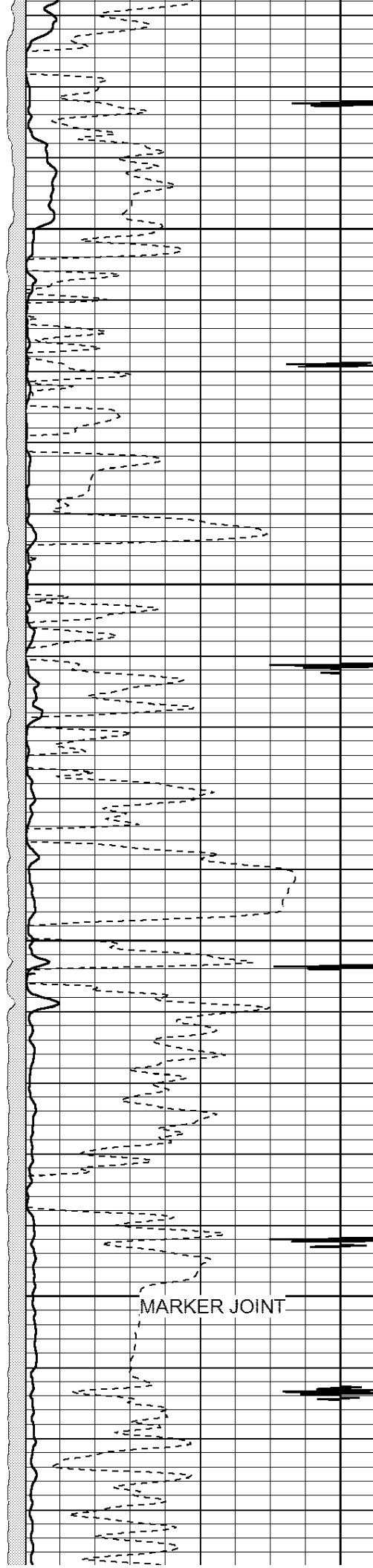


4100

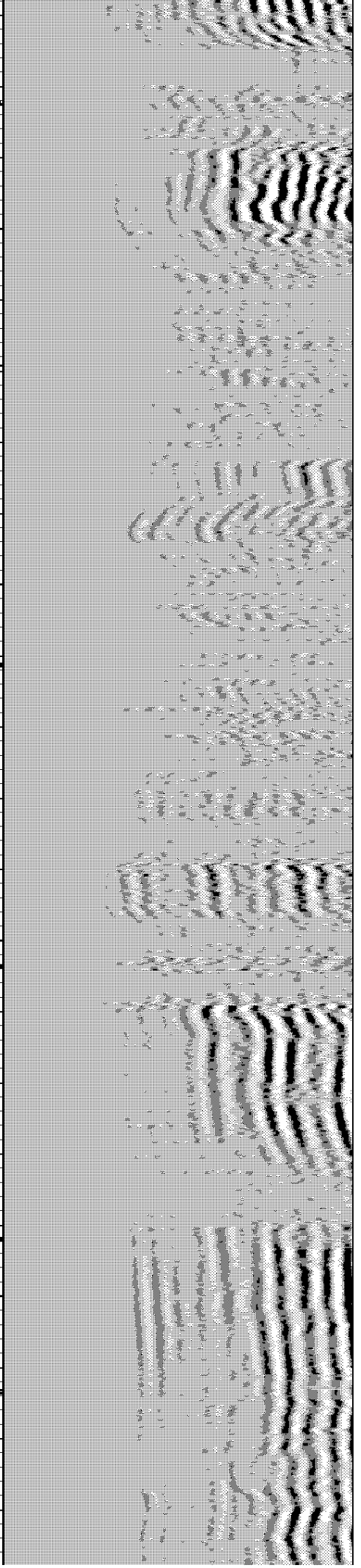
4150

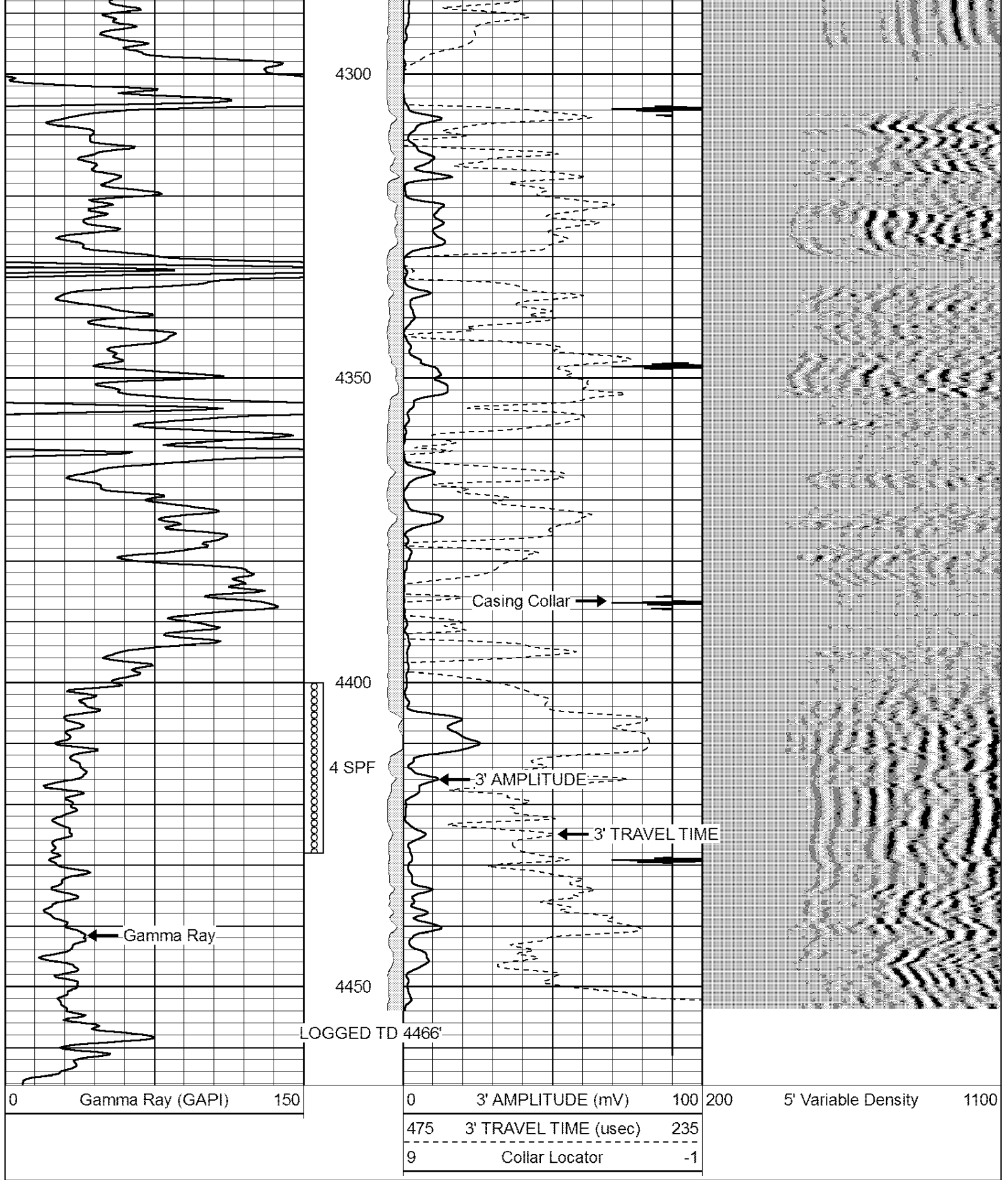
4200

4250



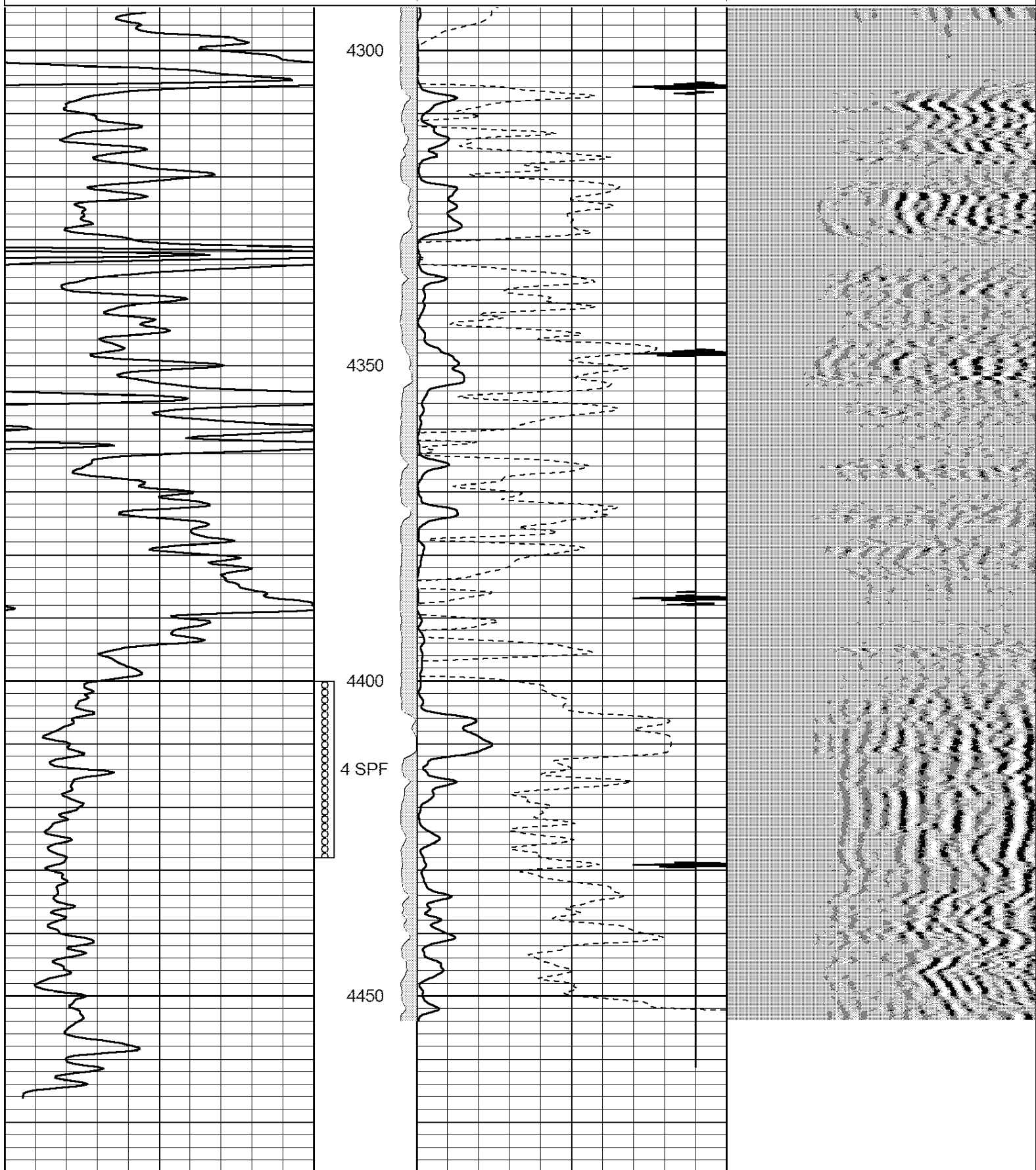
MARKER JOINT





Database File: june22209.db
 Dataset Pathname: pass2
 Presentation Format: 3x5
 Dataset Creation: Thu Jun 02 08:28:52 2022 by Log Std Casedhole 06040
 Charted by: Depth in Feet scaled 1:240

0	Gamma Ray (GAPI)	150	0	3' AMPLITUDE (mV)	100	200	5' Variable Density	1100
			475	3' TRAVEL TIME (usec)	235			
			9	Collar Locator	-1			



0	Gamma Ray (GAPI)	150	0	3' AMPLITUDE (mV)	100	200	5' Variable Density	1100
			475	3' TRAVEL TIME (usec)	235			
			9	Collar Locator	-1			