



**MIDWEST SURVEYS**  
LOGGING - PERFORATING - CONSULTING SERVICES  
P.O. Box 66, Osawatomie, KS 66064  
913 / 755 - 2128

**GAMMA RAY / NEUTRON / CCL**

File No.

Company Altavista Energy, Inc.

Well Owen No. SWD-1

Field Paola / Rantoul

County Miami State Kansas

Location 4200' FSL & 2720' FEL

SE-SE-NE-NW

Sec. 8 Twp. 18S Rge. 22E

Permanent Datum GL Elevation 911'

Log Measured From GL

Drilling Measured From GL

Date 07-08-2024

Run Number One

Depth Driller 820.0

Depth Logger 763.4

Bottom Logged Interval 762.4

Top Log Interval 20.0

Fluid Level Full

Type Fluid Water

Density / Viscosity NA

Salinity - PPM Cl NA

Max Recorded Temp NA

Estimated Cement Top 0.0

Equipment No. 104

Location Osawatimie

Recorded By Steve Windisch

Witnessed By Doug Evans

BORE-HOLE RECORD				CASING RECORD			
Run No.	BIT FROM	TO	SIZE	WGHT.	FROM	TO	
One	9.875"	0.0	7.00"	15.0	0.0	21.0	
Two	5.625"	21.0	2.875"	6.5	0.0	798.2	
				Baffle	Set	At	767.4

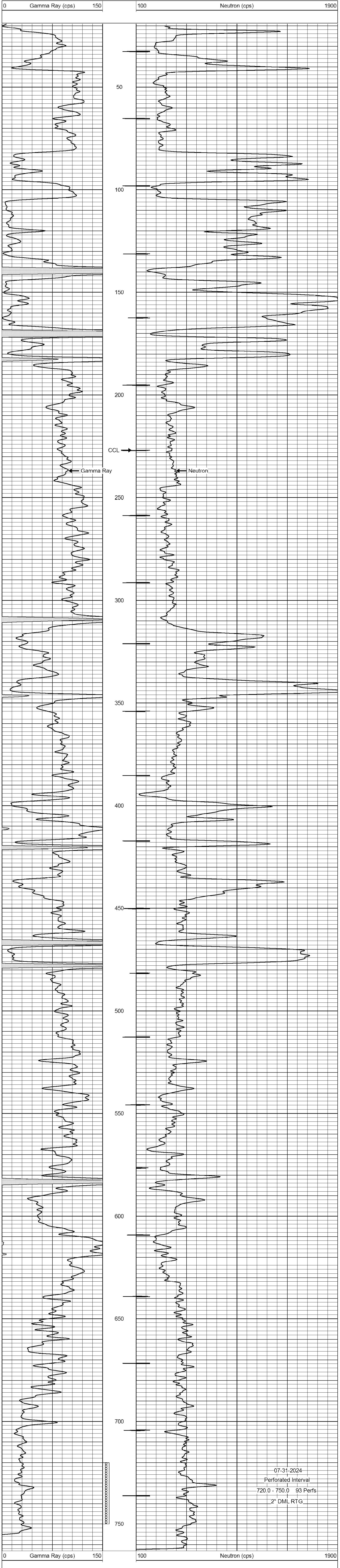
<<< Fold Here >>>

All interpretations are opinions based on inferences from electrical or other measurements and we cannot and do not guarantee the accuracy or correctness of any interpretation, and we shall not, except in the case of gross or willful negligence on our part, be liable or responsible for any loss, costs, damages, or expenses incurred or sustained by anyone resulting from any interpretation made by any of our officers, agents or employees. These interpretations are also subject to our general terms and conditions set out in our current Price Schedule.

Comments

Drilling Contractor :  
Town Oilfield Services Inc.

Database File: owen 1swd.db  
Dataset Pathname: pass1  
Presentation Format: gr-n-ccl  
Dataset Creation: Mon Jul 08 13:49:30 2024 by Log SCH 111116  
Charted by: Depth in Feet scaled 1:240



07-31-2024  
Perforated Interval  
720.0 - 750.0 93 Perfs  
2" DML RTG