



MIDWEST SURVEYS
 LOGGING - OPERATING - CONSULTING SERVICES
 P.O. Box 68, OSAWATOMIE, KS 66064
 913.755.2128

GAMMA RAY / NEUTRON / CCL

File No.

Company **J & J Operating, LLC**

Well **Steve Kelly No. 1-1**

Field **Wildcat**

County **Douglas** State **Kansas**

Location **3465' FNL & 2475' FWL**

Other Services
Perforate

Sec. 31 Typ. 13s Rge. 21e

Permament Datum GL Elevation NA

Log Measured From GL

Drilling Measured From GL

Date 5-26-2010

Run Number One

Depth Driller 800.0

Depth Logger 777.0

Bottom Logged Interval 769.0

Top Log Interval 20.0

Fluid Level Full

Type Fluid Water

Density /Viscosity NA

Salinity - PPM Cl NA

Max Recorded Temp NA

Estimated Cement Top 0.0

Equipment No.	Location	104	Observation
Recorded By	John Winkelsch		
Witnessed By	John Loeffelstein		

BORE-HOLE RECORD	TO	SIZE	WGHT	FROM	TO		
Run No.	BIT	FROM	TO	SIZE <td>WGHT</td> <td>FROM</td> <td>TO</td>	WGHT	FROM	TO
One	9.875"	0.0	42.0	6.25"	0.0	42.0	42.0
Two	5.625"	42.0	800.0	2.675"	0.0	782.0	782.0

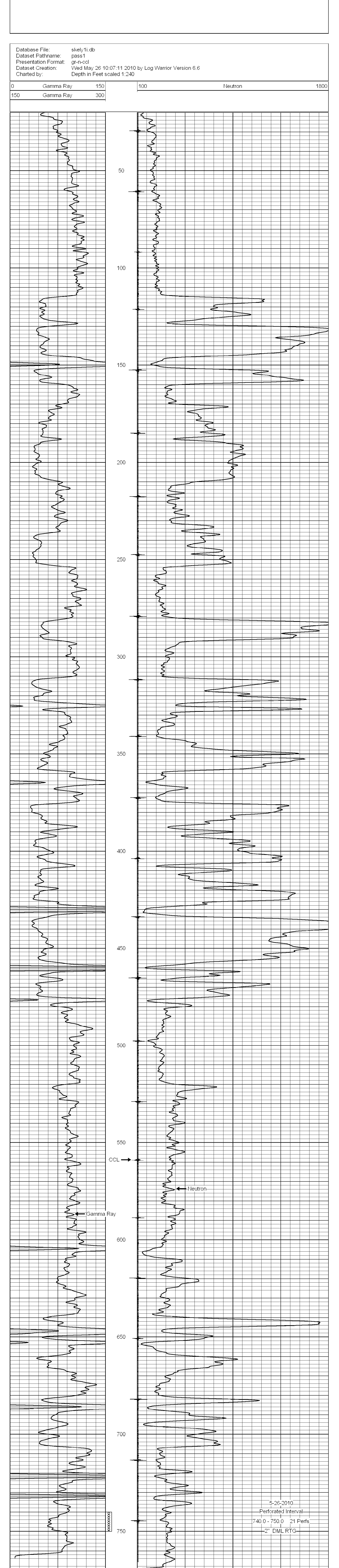
<<< Fold Here >>>

All interpretations are opinions based on inferences from electrical or other measurements and we cannot and do not guarantee the accuracy or correctness of any interpretation, and we shall not, except in the case of gross or willful negligence on our part, be liable or responsible for any loss, costs, damages, or expenses incurred or sustained by anyone resulting from any interpretation made by any of our officers, agents or employees. These interpretations are also subject to our general terms and conditions set out in our current Price Schedule.

Comments

Drilling Contractor : JTC Drilling Company

Database File: skely1i.db
 Dataset Pathname: pass1
 Presentation Format: gr-n-ccl
 Dataset Creation: Wed May 26 10:07:11 2010 by Log Warrior Version 6.6
 Charted by: Depth in Feet scaled 1:240



0 Gamma Ray 150
 150 Gamma Ray 300
 100 Neutron 1800