

SONIC
LOG



Company QUAIL OIL & GAS, LC
Well ROBINSON #1-26
Field MAVID
County GRAHAM State KANSAS

Location: 838' FNL & 548' FWL
NE - SW - NW - NW
API #: 15-065-24307-0000
SEC 26 TWP 8S RGE 23W
Permanent Datum GROUND LEVEL Elevation 2211
Log Measured From KELLY BUSHING 5' A.G.L.
Drilling Measured From KELLY BUSHING
Other Services CDL/CNL/PE DIL/MEL
Elevation K.B. 2216 D.F. 2214 G.L. 2211

Date	2/24/24
Run Number	TWO
Depth Driller	4116
Depth Logger	4112
Bottom Logged Interval	4104
Top Log Interval	200
Casing Driller	8.675@263
Casing Logger	263
Bit Size	7.785
Type Fluid in Hole	CHEMICAL MUD
Density / Viscosity	9.2/59
pH / Fluid Loss	10.0/5.0
Source of Sample	FLOWLINE
Rm @ Meas. Temp	2.00@64F
Rmf @ Meas. Temp	1.50@64F
Rmc @ Meas. Temp	2.40@64F
Source of Rmf / Rmc	MEASUREMENT
Rm @ BHT	1.09@117F
Time Circulation Stopped	3.5 HOURS
Time Logger on Bottom	2.00 A.M.
Maximum Recorded Temperature	117F
Equipment Number	922339
Location	HAYS, KANSAS
Recorded By	JEFF LUEBBERS
Witnessed By	ROGER MARTIN

<<< Fold Here >>>

All interpretations are opinions based on inferences from electrical or other measurements and we cannot and do not guarantee the accuracy or correctness of any interpretation, and we shall not, except in the case of gross or willful negligence on our part, be liable or responsible for any loss, costs, damages, or expenses incurred or sustained by anyone resulting from any interpretation made by any of our officers, agents or employees. These interpretations are also subject to our general terms and conditions set out in our current Price Schedule.

15-065-24307-0000 Comments

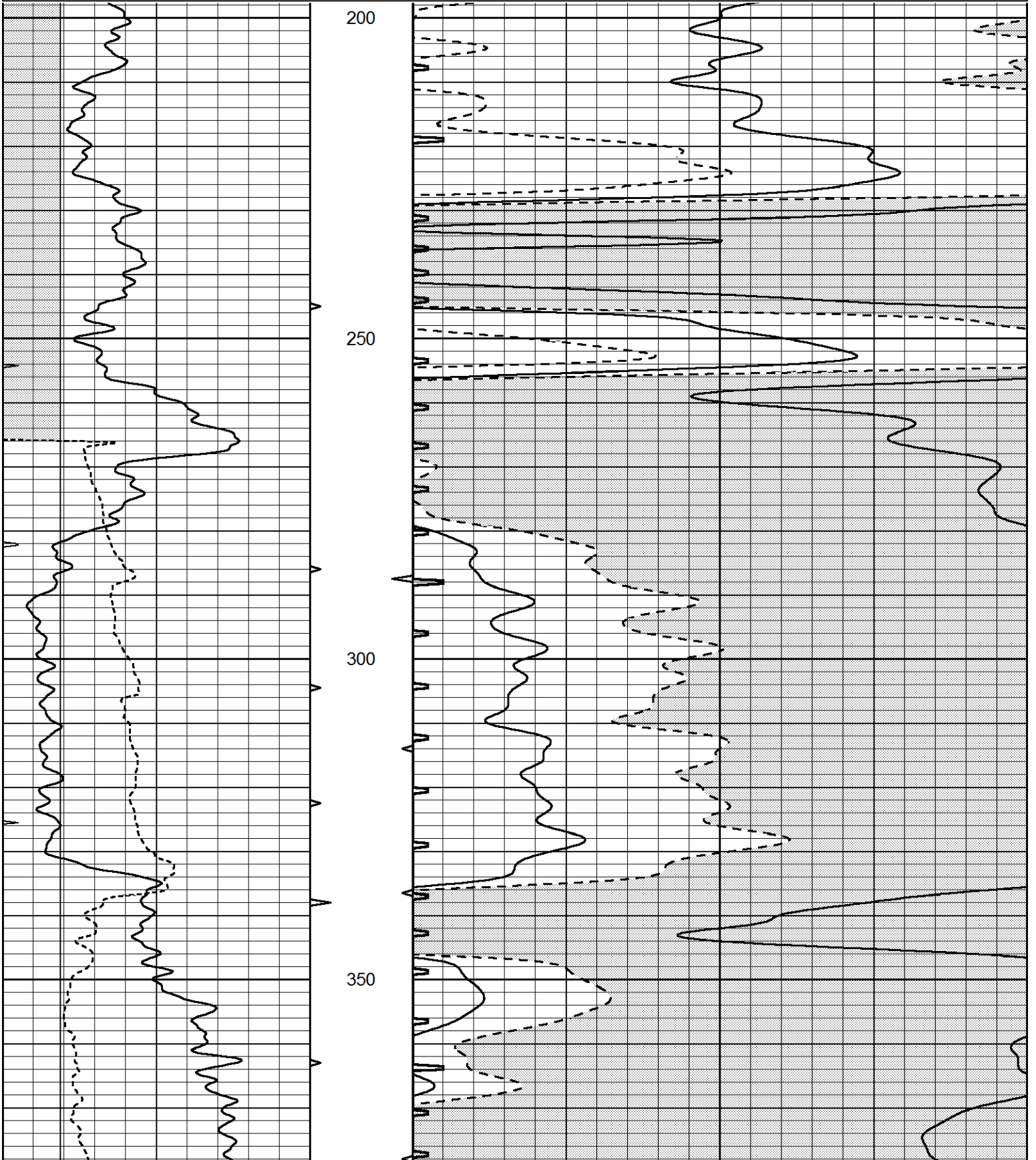
THANK YOU FOR USING ELI WIRELINE HAYS. KANSAS (785) 628-6395
DIRECTIONS
HILL CITY, KS., S. OF RIVER BRIDGE ON HWY 283 TO "O RD./RIVER RD.) 1W. TO "265TH AVE.",
1/2S., 1/4W., S. INTO

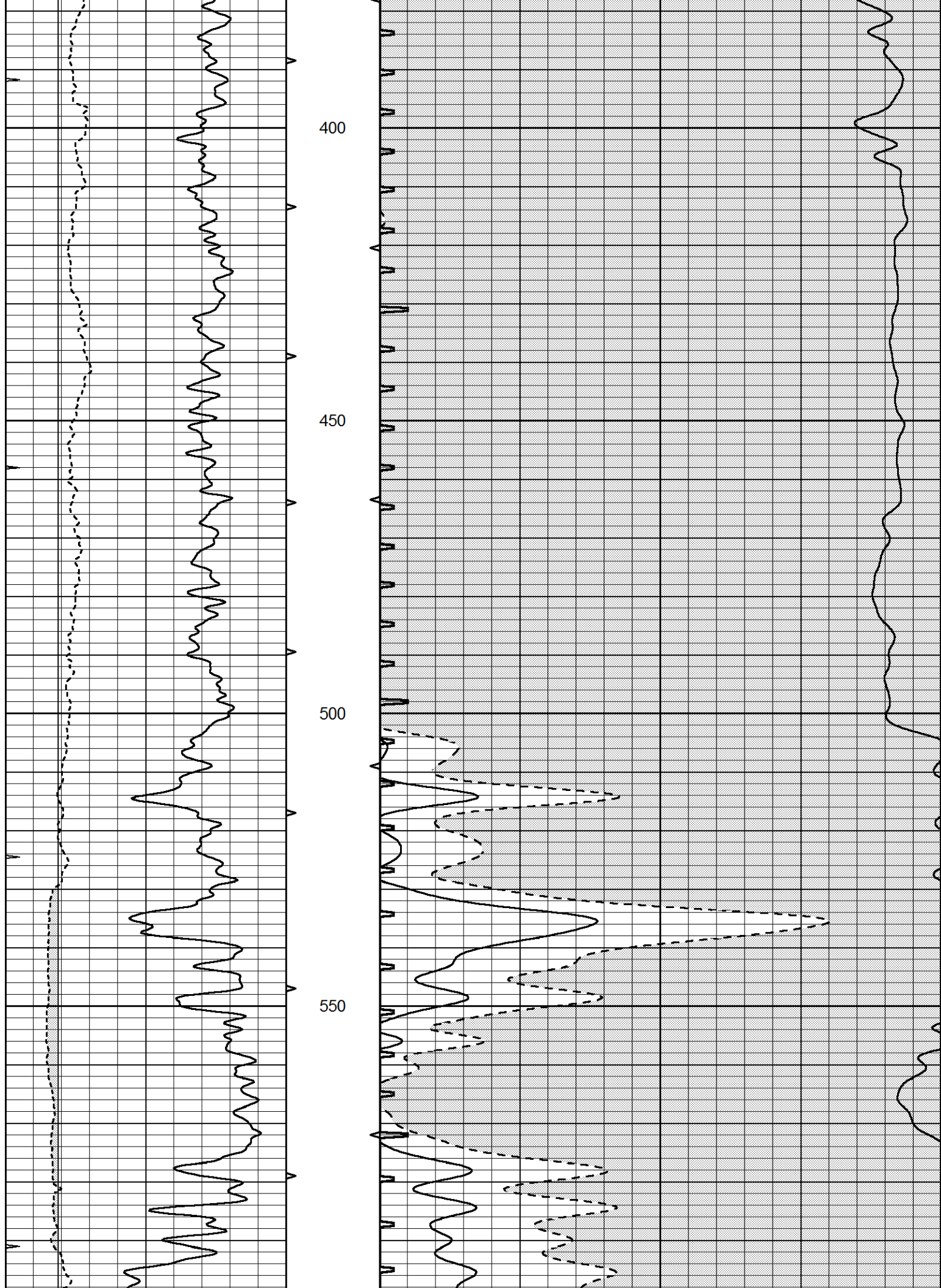


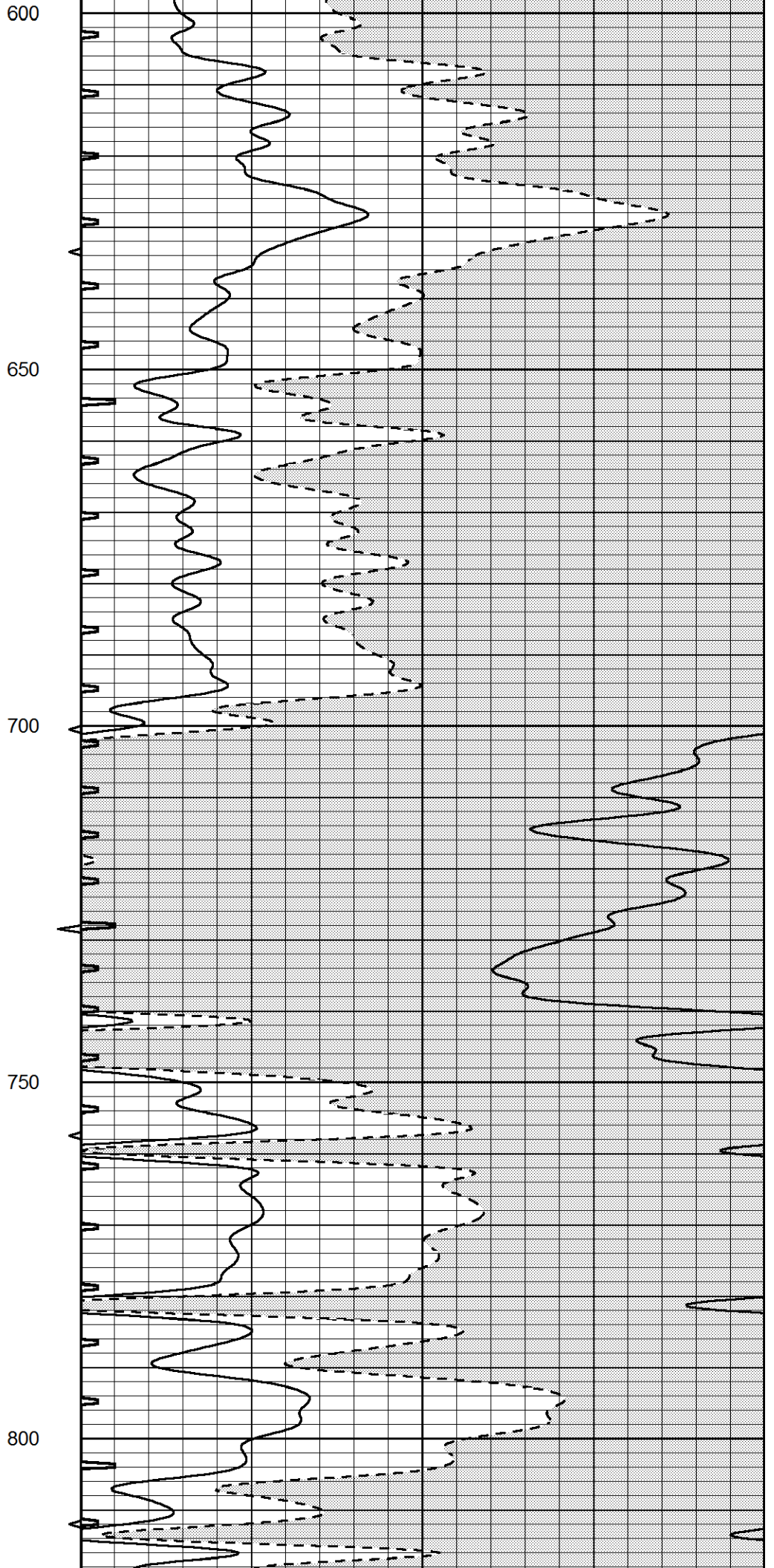
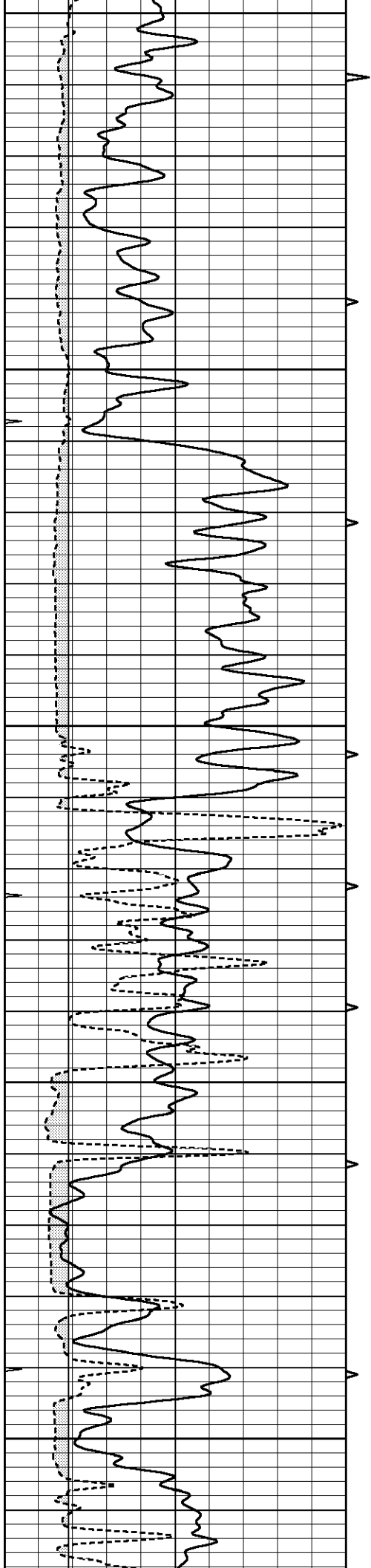
MAIN SECTION

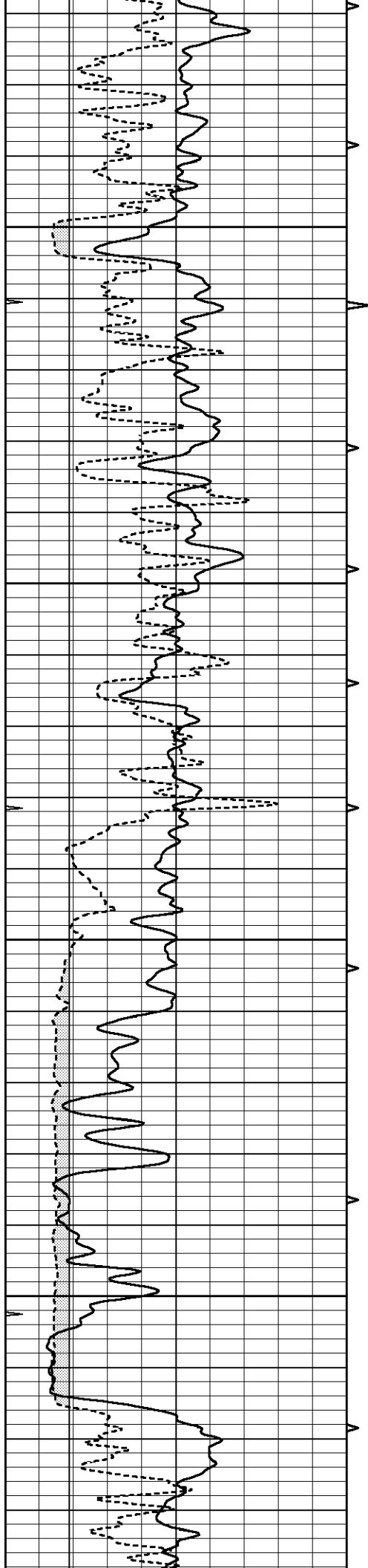
Database File 8414pe.db
 Dataset Pathname pass6.2
 Presentation Format slt
 Dataset Creation Sat Feb 24 03:39:14 2024
 Charted by Depth in Feet scaled 1:240

0	GAMMA RAY (GAPI)	150	ABHV	140	DELTA TIME (usec/ft)	40	
6	CALIPER (in)	16	10 (ft3)	0	30	SONIC POROSITY (pu)	-10
0	MINMK	20	TBHV	0	ITT (msec)	20	
			0 (ft3)	10			







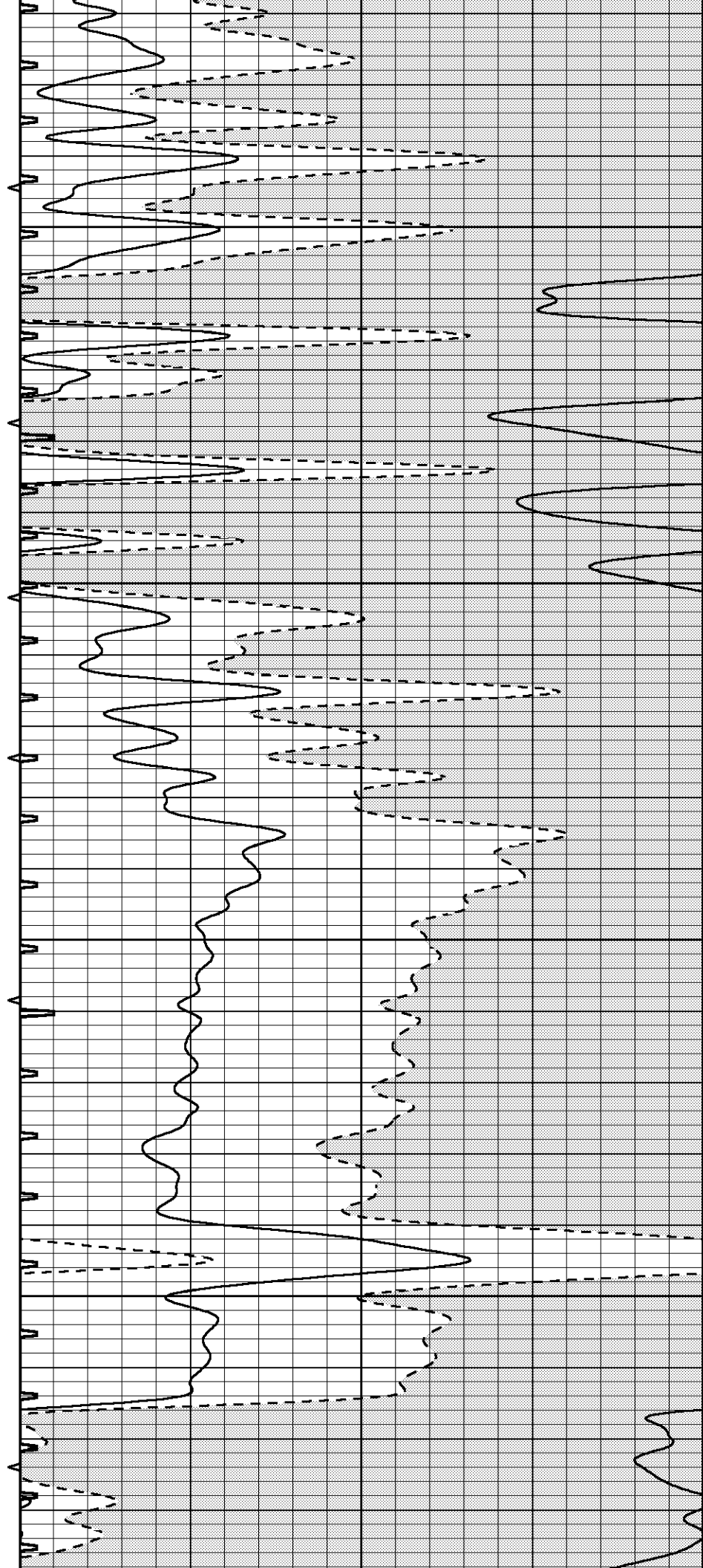


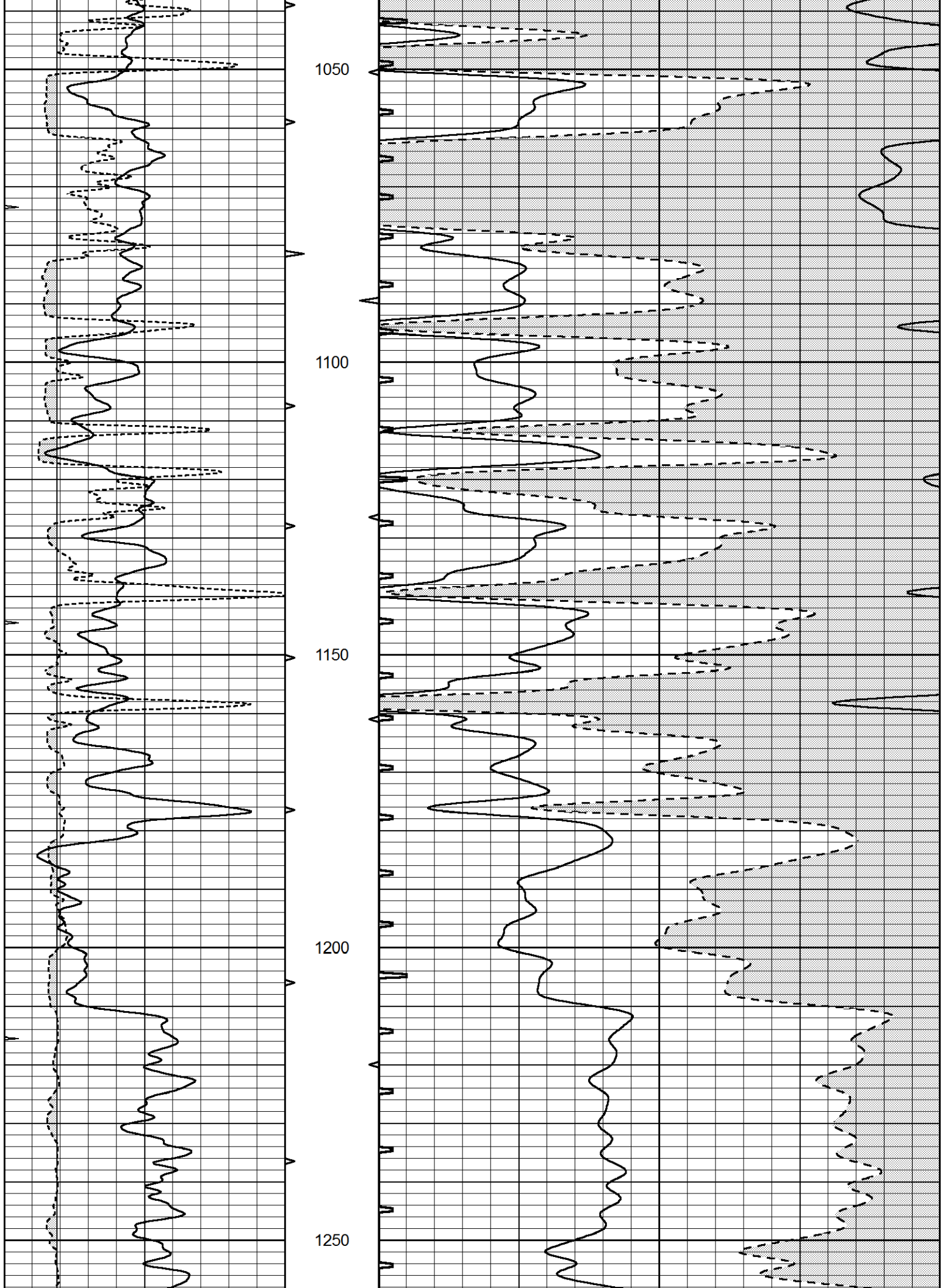
850

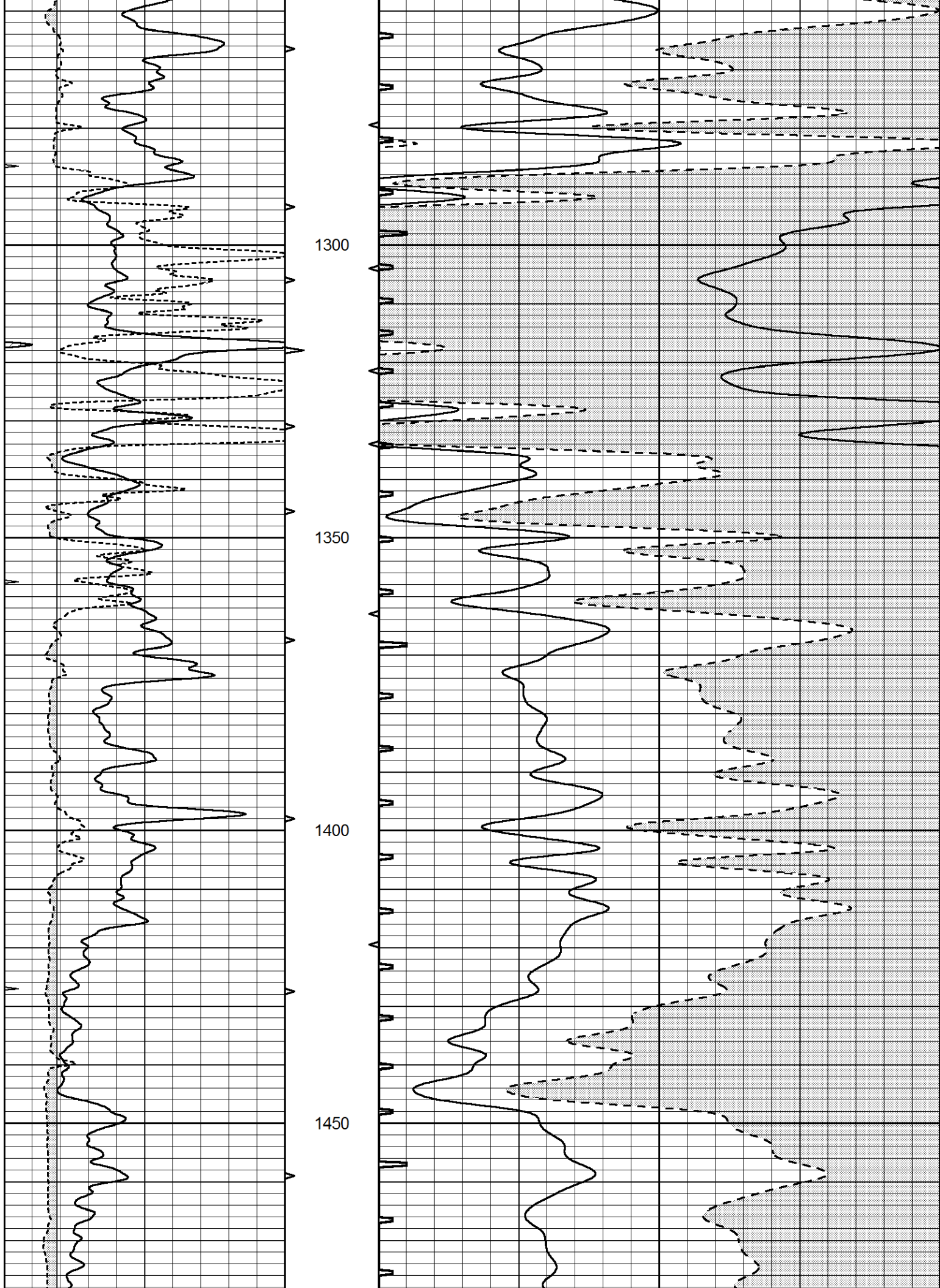
900

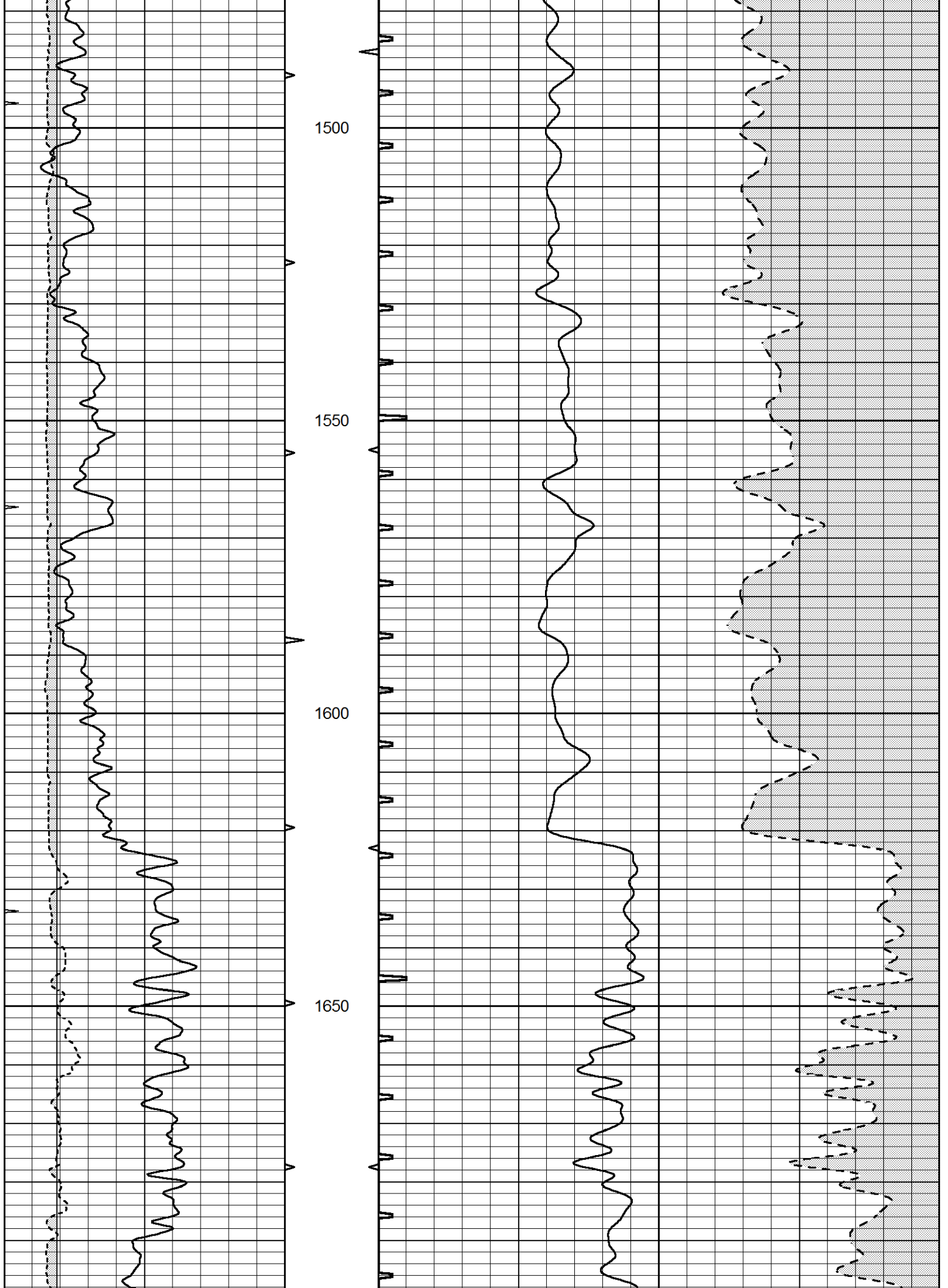
950

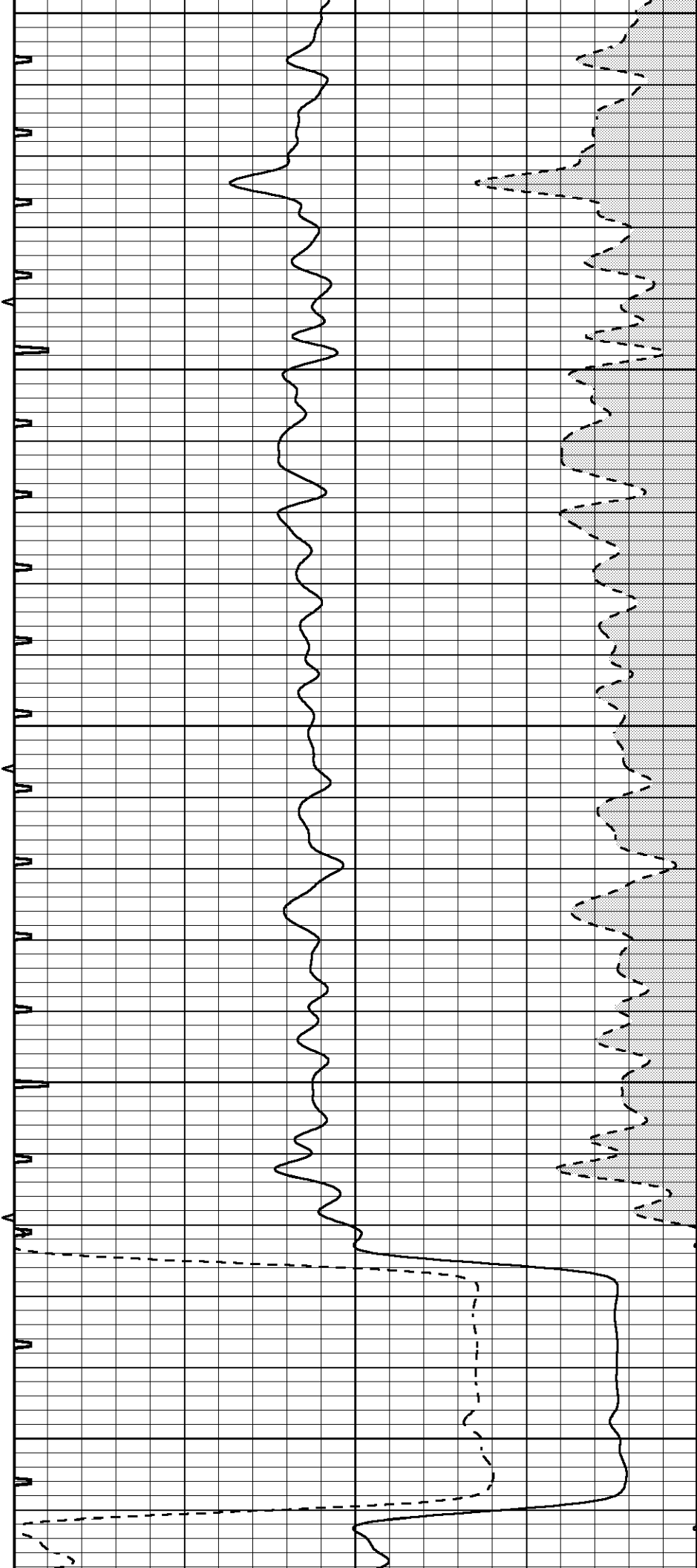
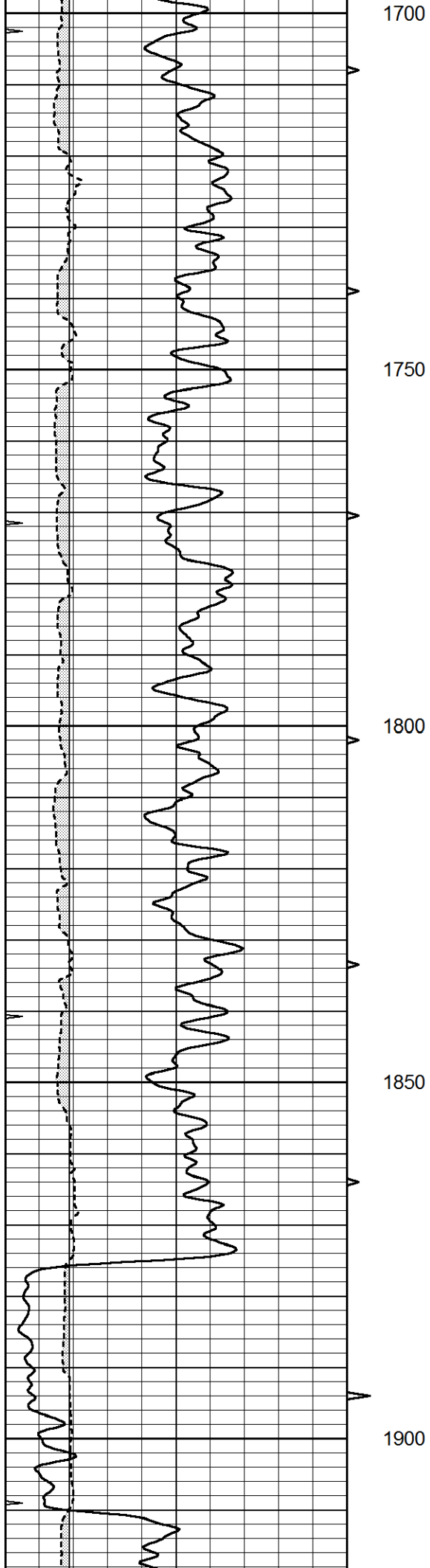
1000

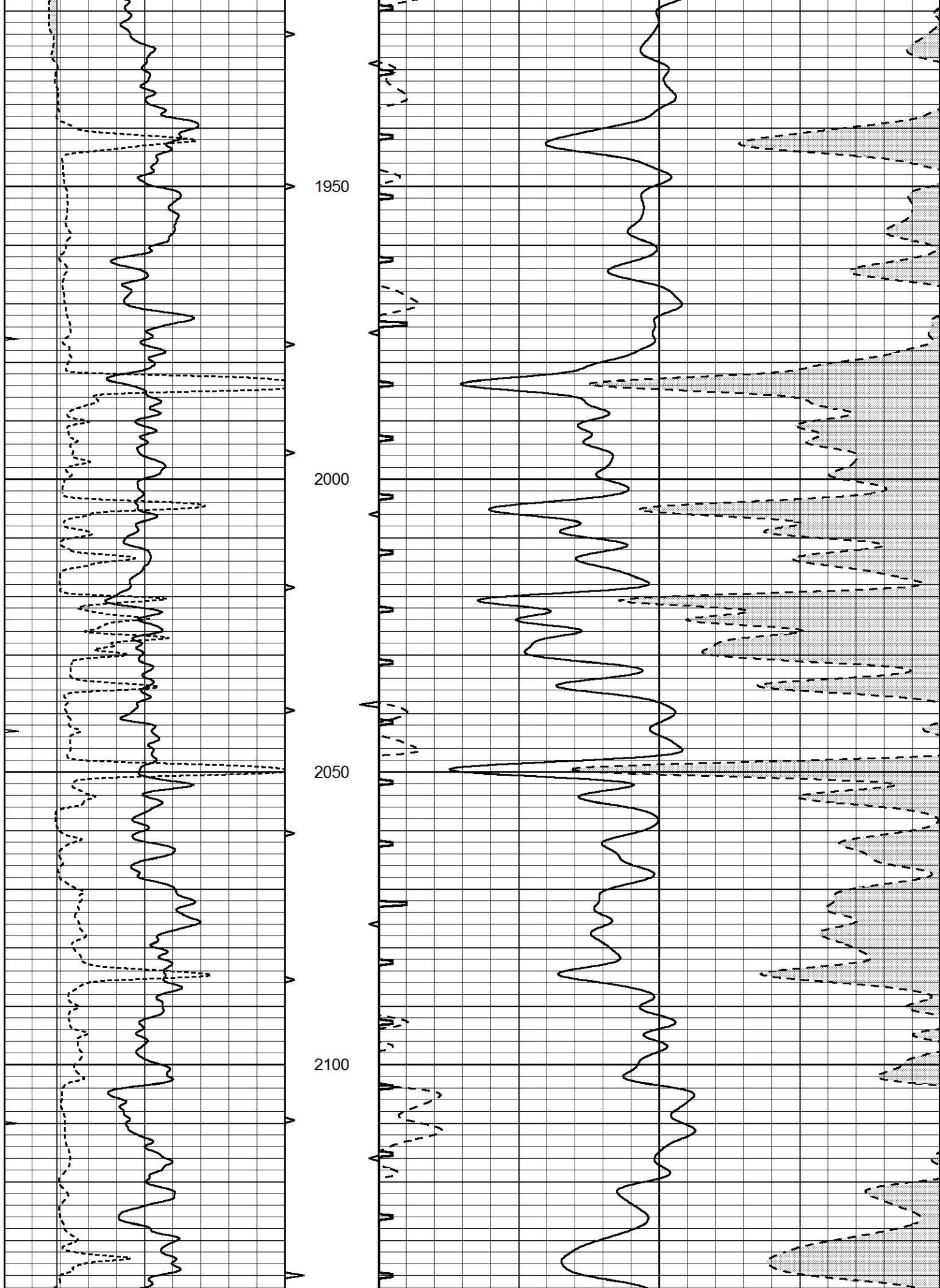


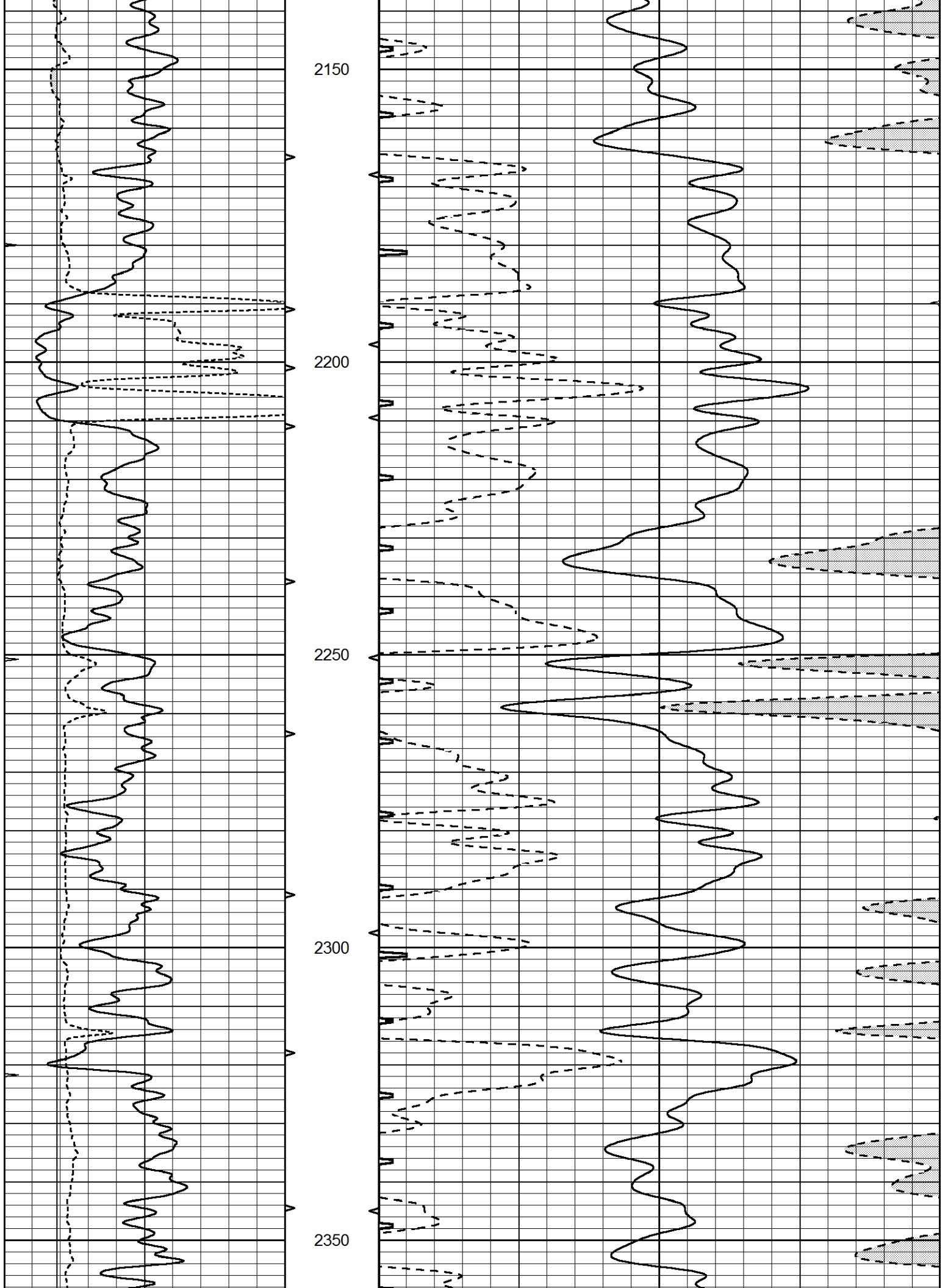


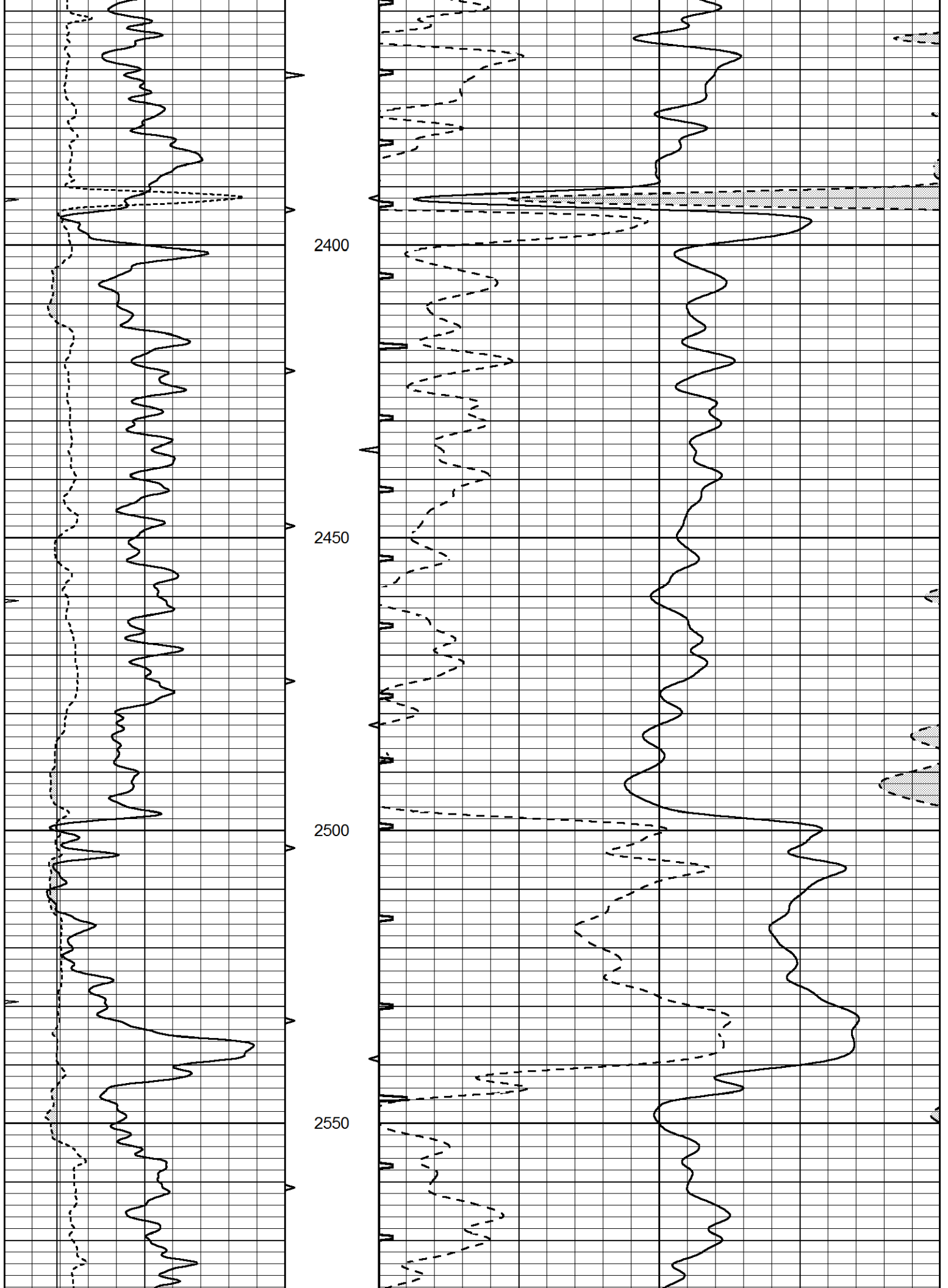


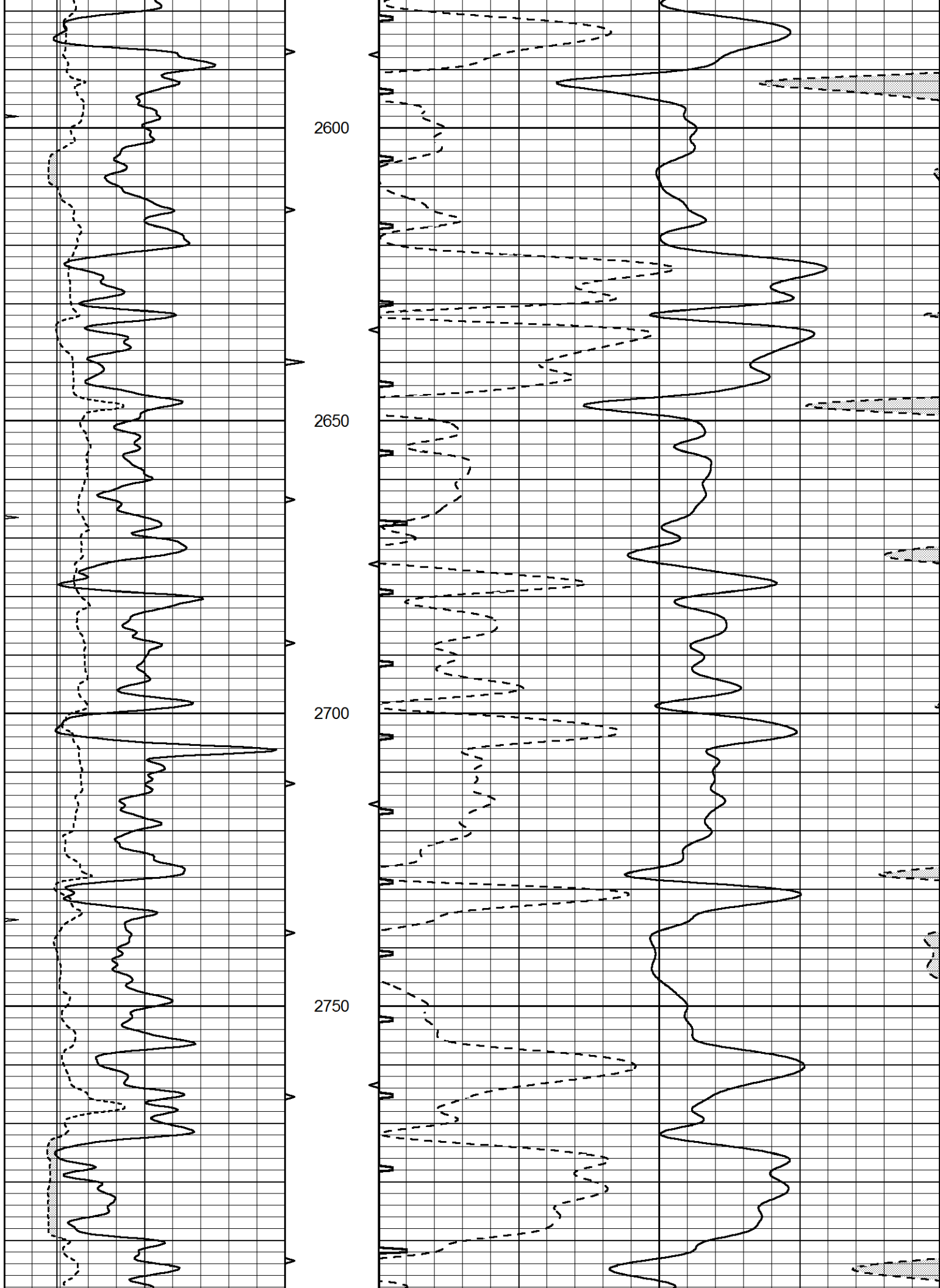


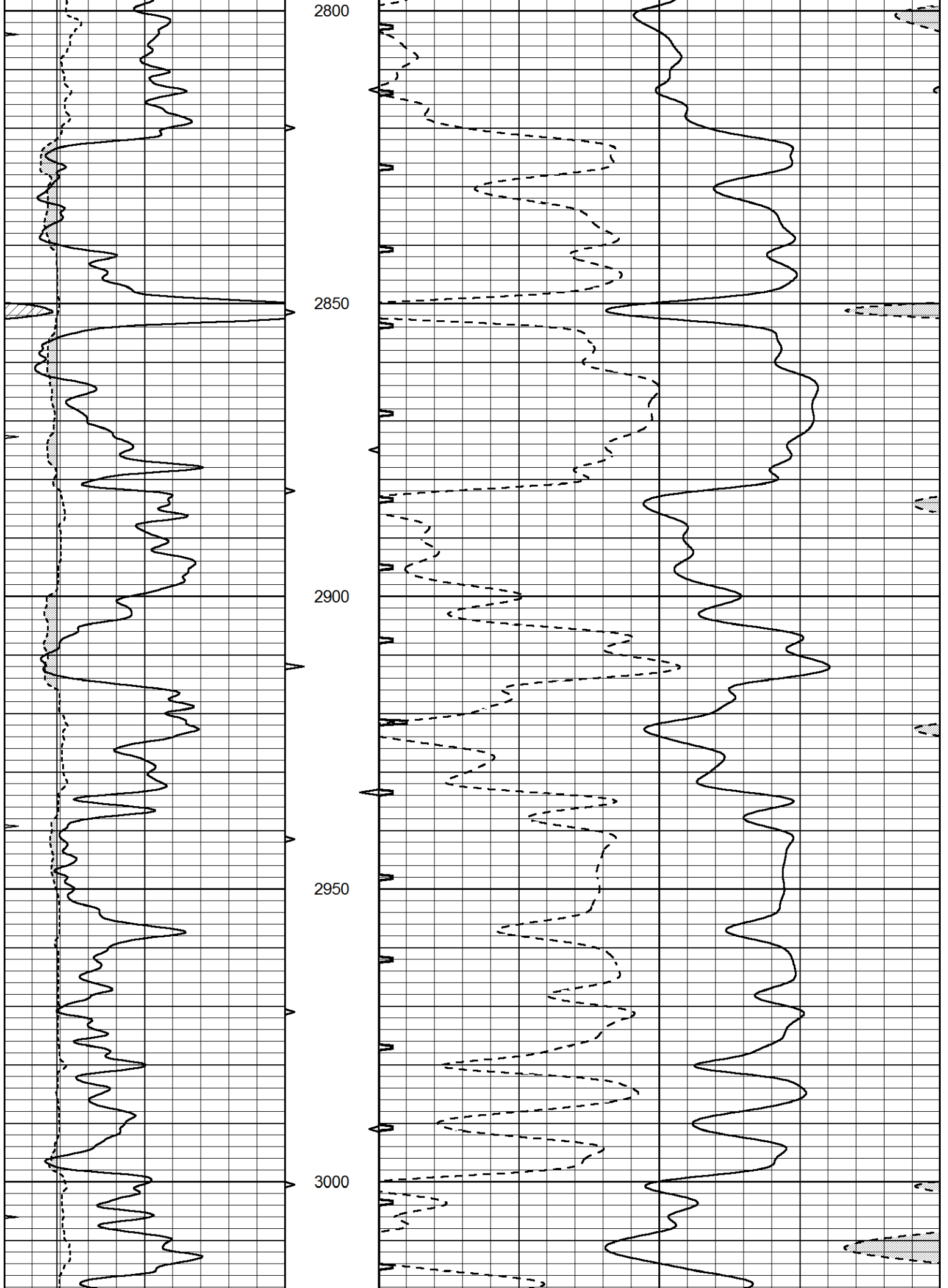


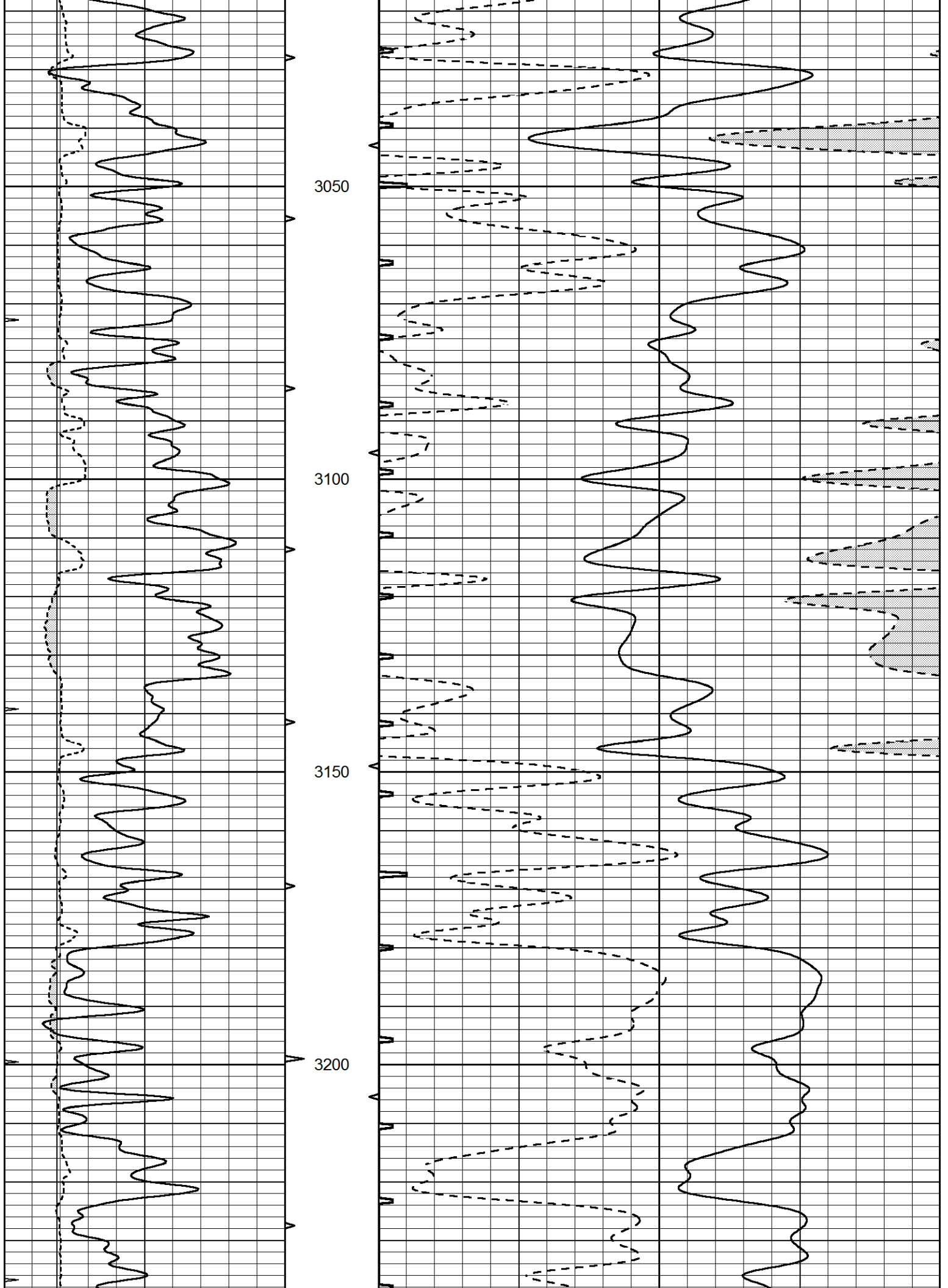


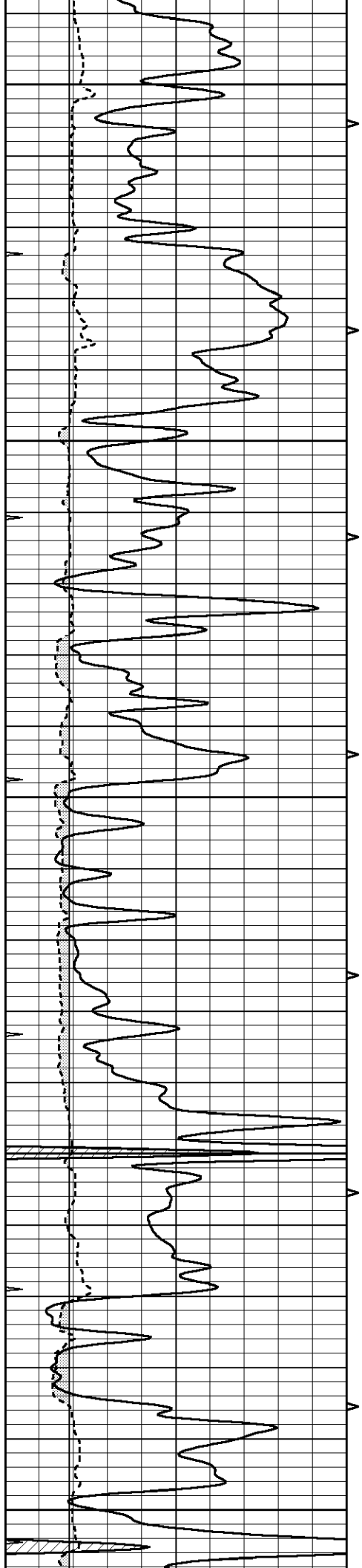












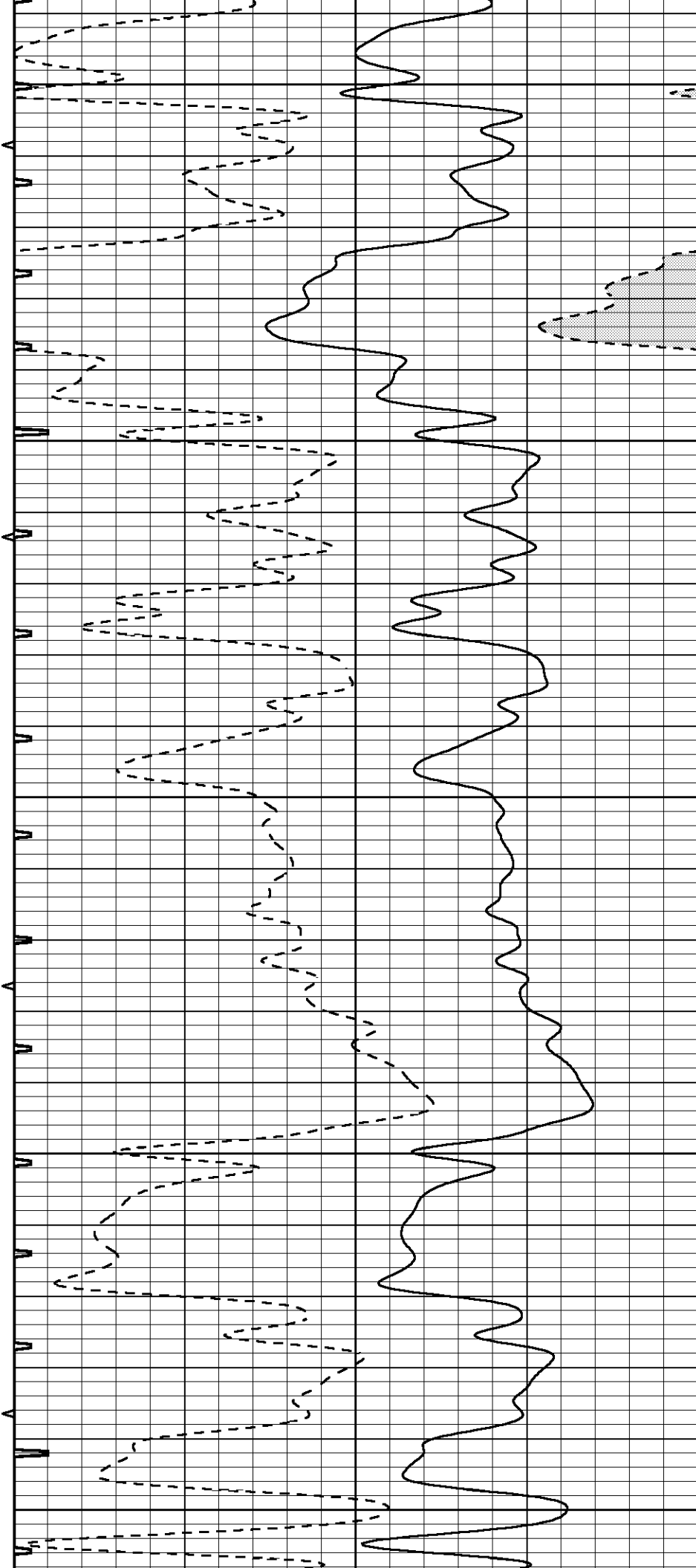
3250

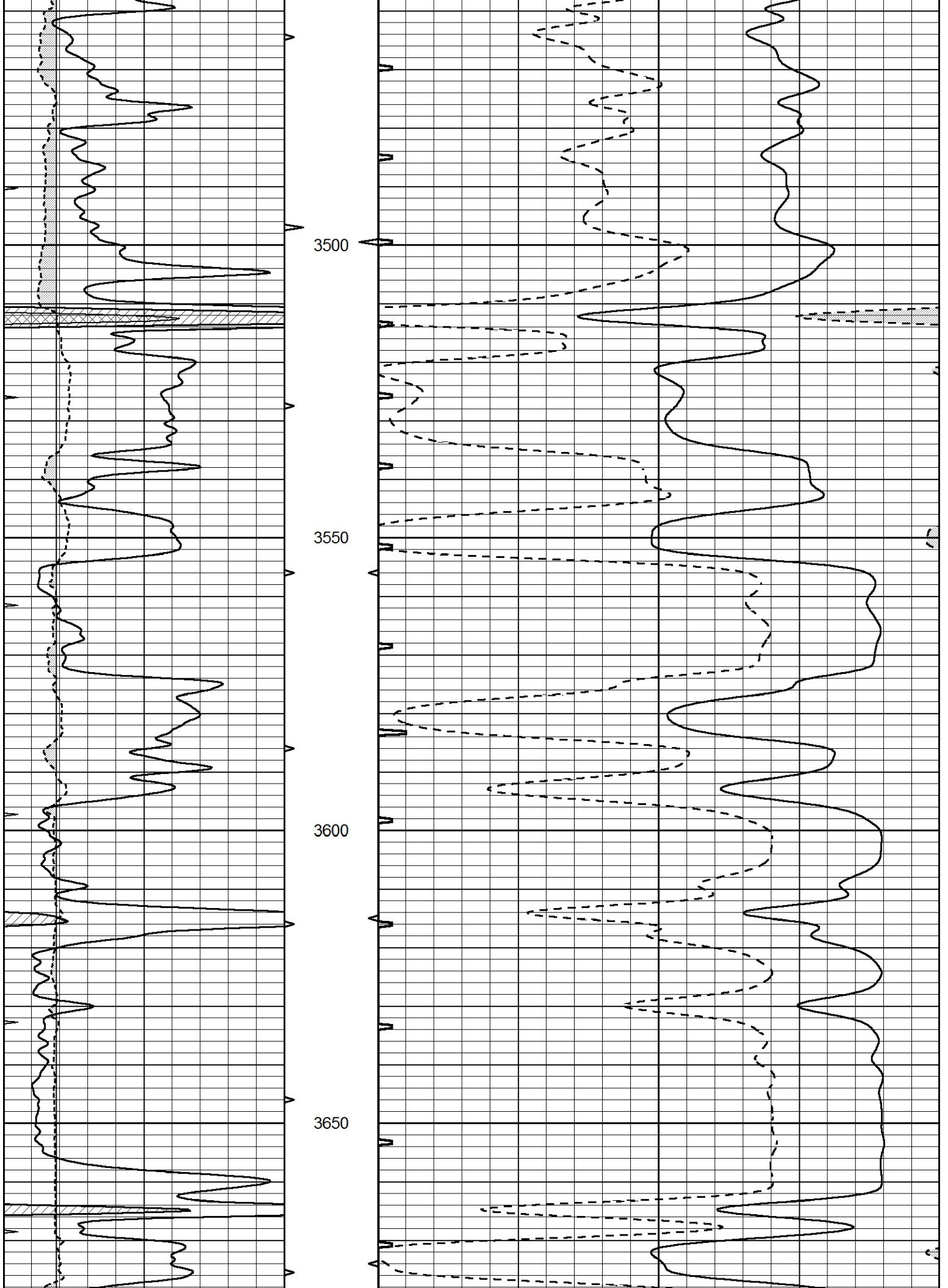
3300

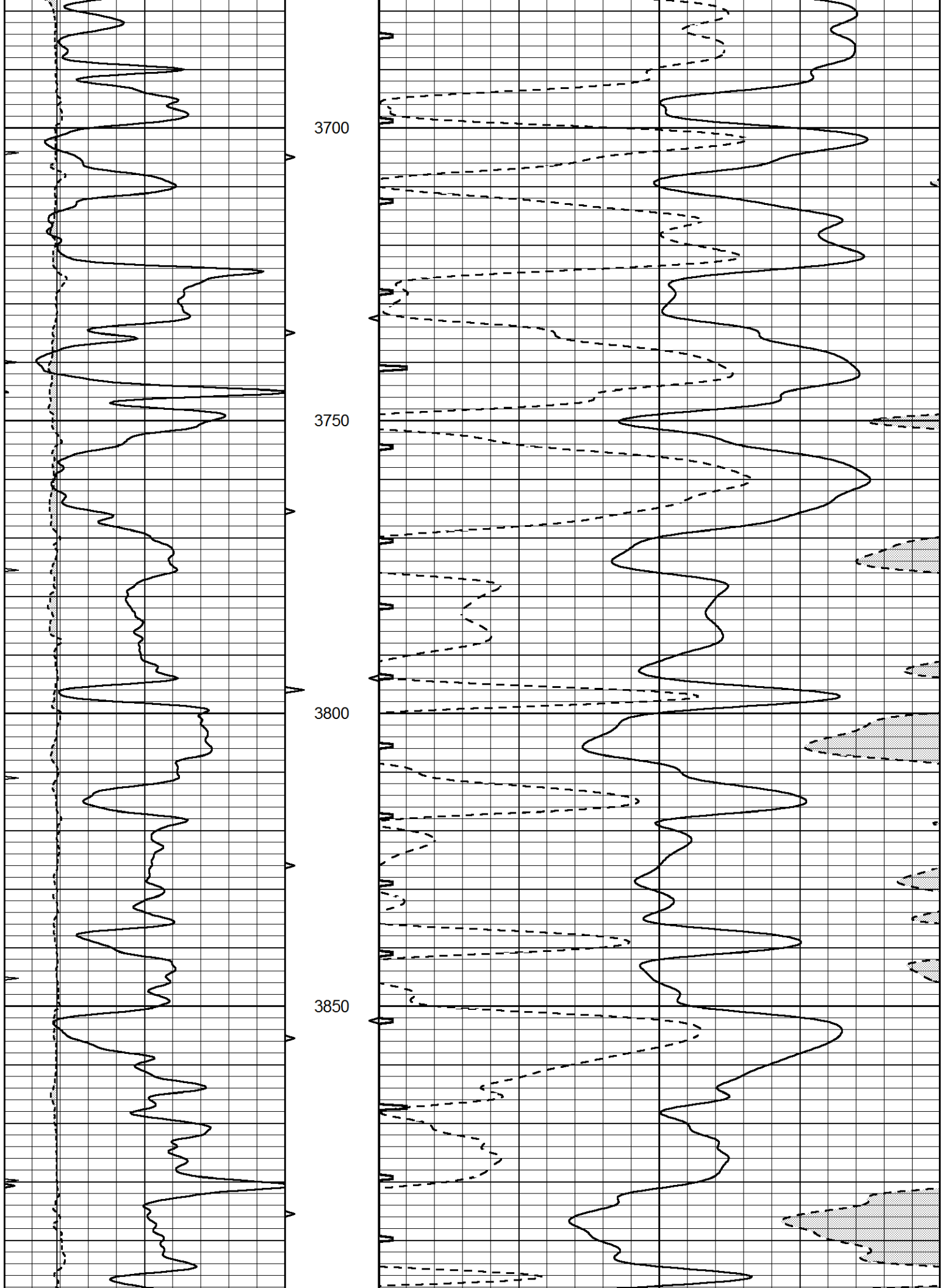
3350

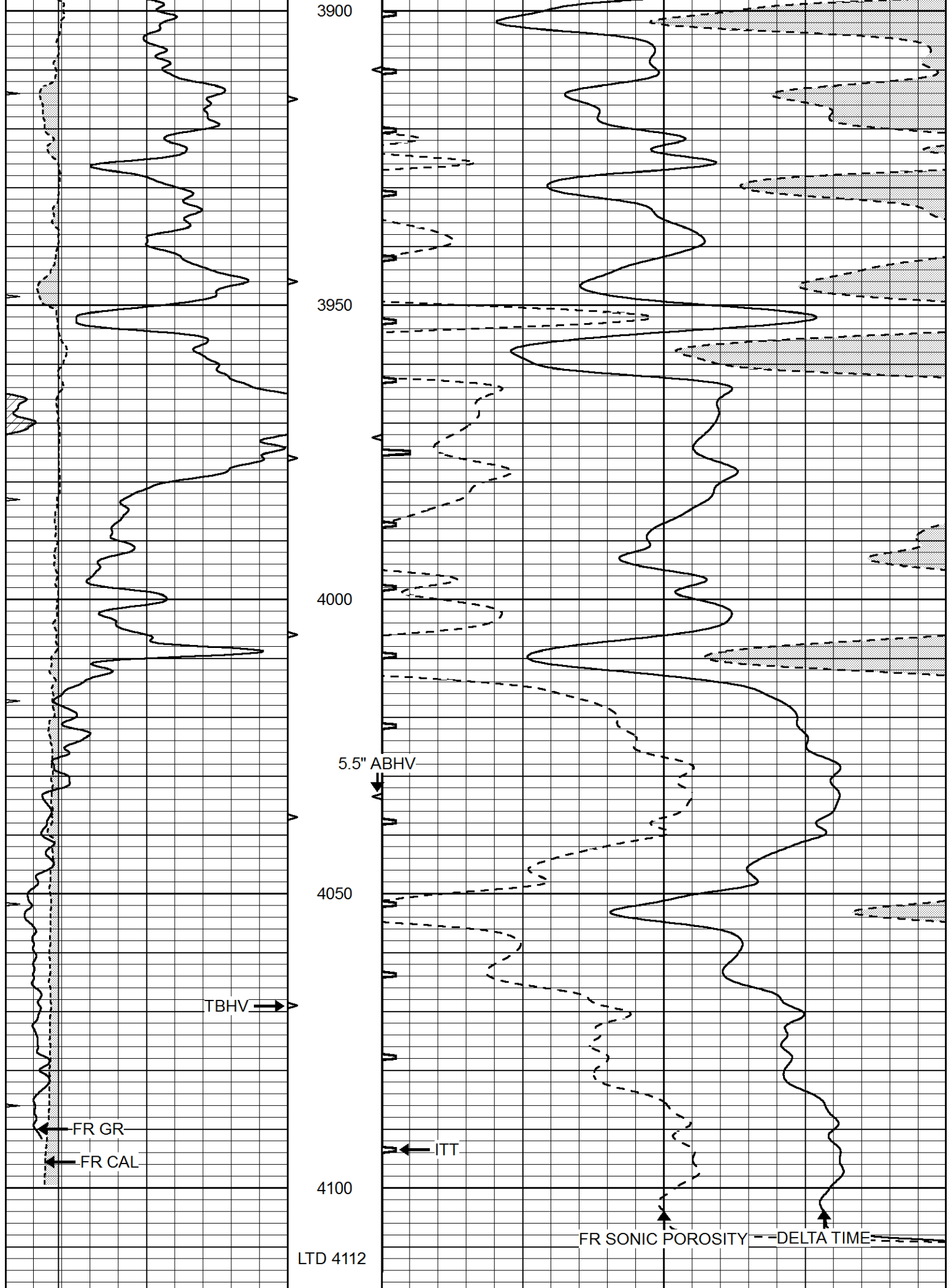
3400

3450









0	GAMMA RAY (GAPI)	150	ABHV	140	DELTA TIME (usec/ft)	40
6	CALIPER (in)	16	10 (ft3) 0	30	SONIC POROSITY (pu)	-10
0	MINMK	20	TBHV	0	ITT (msec)	20
			0 (ft3) 10			



REPEAT SECTION

Database File 8414pe.db
 Dataset Pathname pass5.1
 Presentation Format slt
 Dataset Creation Sat Feb 24 02:25:35 2024
 Charted by Depth in Feet scaled 1:240

0	GAMMA RAY (GAPI)	150	ABHV	140	DELTA TIME (usec/ft)	40
6	CALIPER (in)	16	10 (ft3) 0	30	SONIC POROSITY (pu)	-10
0	MINMK	20	TBHV	0	ITT (msec)	20
			0 (ft3) 10			

