

ROGER L. MARTIN

INDEPENDENT PETROLEUM GEOLOGIST 316-250-6970

GEOLOGIST'S REPORT

DRILLING TIME AND SAMPLE LOG

| | |
|--|-------------------------------------|
| COMPANY QUAIL OIL & GAS, LC | ELEVATIONS |
| LEASE ROBINSON 1-26 | KB 2216' GL 2211' |
| FIELD MAVID | Measurements Are All From KB |
| LOCATION 838' FNL & 548' FWL | API # 15-065-24307 |
| SECTION 26 TOWNSHIP 8 RANGE 23W | |
| COUNTY GRAHAM STATE KANSAS | |
| CONTRACTOR LD DRILLING, Rig #1 | CASING |
| SPUD 02/14/2024 COMP 02/24/2024 | SURFACE 8.58" set @ 263' |
| RTD 4116' LTD 4112' | PRODUCTION n/a P&A |
| ELECTRICAL SURVEYS | |
| ELE: DIL, CDL/CNL/PE, MEL/SONIC | |
| No DST's | |

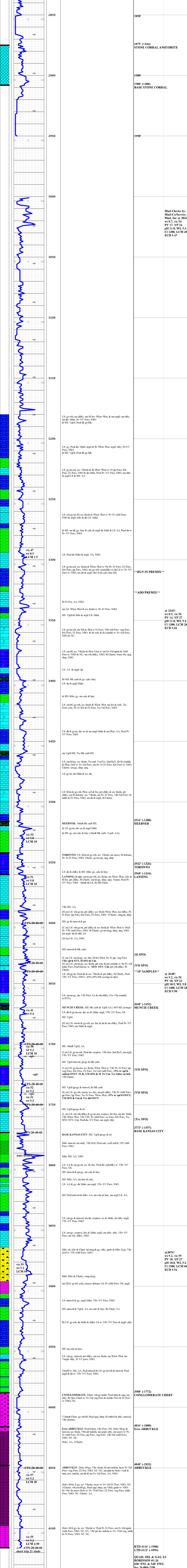
| FORMATION TOPS | LOG | SAMPLES | CHRONOLOGY |
|------------------------|------------------------------|------------------------------|--|
| STONE CORRAL ANHYDRITE | 1877' (+339) 1911' (+365) | 1875' (+344) 1908' (+388) | 02/14/2024- MIRRU LD Drilling Rig #1, SPUD 12 1/4" hole. Run surface casing, set @ 263' KB. |
| HEEBNER | 3510' (-1294) | 3516' (-1300) | 02/15/2024- Drtg @ 291' @ 5:45 AM. |
| TORONTO | 3535' (-1319) | 3542' (-1326) | 02/16/2024- Drtg @ 1365' @ 6:10 AM. |
| LANSING | 3554' (-1338) | 3560' (-1344) | 02/17/2024- Drtg @ 2220' @ 5:35 AM. |
| LKC 'T' Zn | 3620' (-1404) | 3627' (-1411) | |
| LKC 'G' Zn | 3630' (-1414) | 3635' (-1419) | 02/18/2024- Drtg @ 2436' @ 5:30 AM. |
| MUNCIE CREEK | 3663' (-1447) | 3668' (-1452) | |
| LKC 'H' Zn | 3677' (-1461) | 3681' (-1465) | 02/19/2024- Drtg @ 2776' @ 5:35 AM. |
| LKC 'I' Zn | 3700' (-1484) | 3705' (-1489) | Displace mud system -3000'. |
| LKC 'P' Zn | 3713' (-1497) | 3718' (-1502) | |
| LKC 'K' Zn | 3724' (-1508) | 3728' (-1512) | 02/20/2024- WOP @ 3024' @ 5:30 AM. |
| LKC 'L' Zn | 3750' (-1534) | 3756' (-1540) | |
| BASE KANSAS CITY | 3768' (-1552) | 3773' (-1557) | 02/21/2024- WOP @ 3343' @ 5:30 AM. |
| CONGLOMERATE CHERT | 3980' (-1764) | 3988' (-1772) | 02/23/2024- CFS @ 3640' @ 5:35 AM. |
| EROSIONAL ARBUCKLE | 4010' (-1794) | 4016' (-1800) | 02/23/2024- Drtg @ 3876' @ 5:30 AM. |
| ARBUCKLE | 4046' (-1830) | 4048' (-1832) | 02/24/2024- LDDP @ RTD 4116' @ 5:40 AM. |
| RTD/LTD | 4012' (-1896) | 4016' (-1900) | Run open hole E-logs P&A (see remarks). |

REMARKS:

The Quail Oil & Gas, LC Robinson #1 26 test well was P&A'd in accordance with KCC regulations as follows:
 Spot cement plugs through drill pipe. 1st plug 50 sacks @ 3980'. 2nd plug 50 sacks @ 1900'.
 4th plug 50 sacks @ 300'. 5th plug 10 sacks from 40' to surface. 20 sacks in rat hole.

Respectfully submitted,
 Roger L. Martin, Geologist

LTH POROSITY DRILLING TIME DST SAMPLE DESCRIPTION 0 TGV 300



Mud Checks by:
 Mud-Co/Service
 Inc @ 3024':
 wt 8.7, vis 54
 PV 17, VP 24
 pH 11.0, WL 5.4
 CI 1300, LCM 2#
 ECD 9.47

@ 3343':
 wt 8.9, vis 56
 PV 14, VP 22
 pH 11.0, WL 5.4
 CI 1300, LCM 2#
 ECD 9.66

@ 3640':
 wt 9.2, vis 59
 PV 10, VP 27
 pH 10.0, WL 5.6
 CI 1500, LCM 6#
 ECD 9.94

@ 3876':
 wt 9.2, vis 59
 PV 10, VP 27
 pH 10.0, WL 5.6
 CI 1500, LCM 6#
 ECD 9.94

4150