



**COMPENSATED
DENSITY/NEUTRON
PE LOG**

Company: QUAIL OIL & GAS, LC
Well: ROBINSON #1-26
Field: MAVID
County: GRAHAM
State: KANSAS

Company: QUAIL OIL & GAS, LC
Well: ROBINSON #1-26
Field: MAVID
County: GRAHAM
State: KANSAS

Location: 838' FNL & 548' FWL
NE - SW - NW - NW
API #: 15-065-24307-0000
SEC 26 TWP 8S RGE 23W
Permanent Datum: GROUND LEVEL Elevation: 2211
Log Measured From: KELLY BUSHING 5' A.G.L.
Drilling Measured From: KELLY BUSHING
Other Services: DILMEEL SONIC
Elevation: K.B. 2216, D.F. 2214, G.L. 2211

Date	2/24/24
Run Number	ONE
Depth Driller	4116
Depth Logger	4112
Bottom Logged Interval	4088
Top Log Interval	3200
Casing Driller	8.675@263
Casing Logger	263
Bit Size	7.785
Type Fluid in Hole	CHEMICAL MUD
Density / Viscosity	9.2/59
pH / Fluid Loss	10.0/5.0
Source of Sample	FLOWLINE
Rm @ Meas. Temp	2.00@64F
Rmf @ Meas. Temp	1.50@64F
Rmc @ Meas. Temp	2.40@64F
Source of Rmf / Rmc	MEASUREMENT
Rm @ BHT	1.09@117F
Time Circulation Stopped	2 HOURS
Time Logger on Bottom	12:00 A.M.
Maximum Recorded Temperature	117F
Equipment Number	922339
Location	HAYS, KANSAS
Recorded By	JEFF LUEBBERS
Witnessed By	ROGER MARTIN

<<< Fold Here >>>

All interpretations are opinions based on inferences from electrical or other measurements and we cannot and do not guarantee the accuracy or correctness of any interpretation, and we shall not, except in the case of gross or willful negligence on our part, be liable or responsible for any loss, costs, damages, or expenses incurred or sustained by anyone resulting from any interpretation made by any of our officers, agents or employees. These interpretations are also subject to our general terms and conditions set out in our current Price Schedule.

15-065-24307-0000 Comments

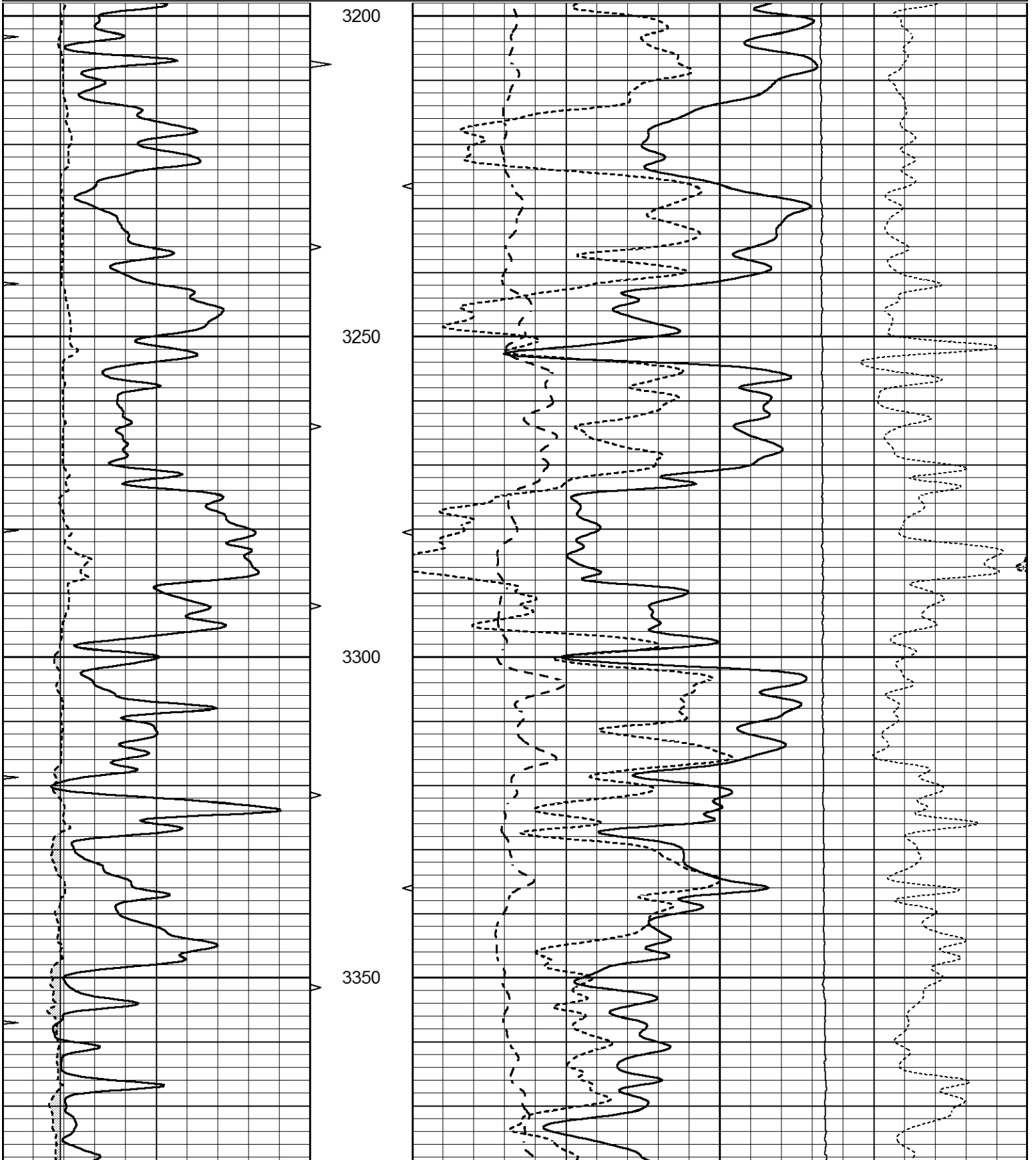
THANK YOU FOR USING ELI WIRELINE HAYS. KANSAS (785) 628-6395
DIRECTIONS
HILL CITY, KS., S. OF RIVER BRIDGE ON HWY 283 TO "O RD./RIVER RD.) 1W. TO "265TH AVE.",
1/2S., 1/4W., S. INTO

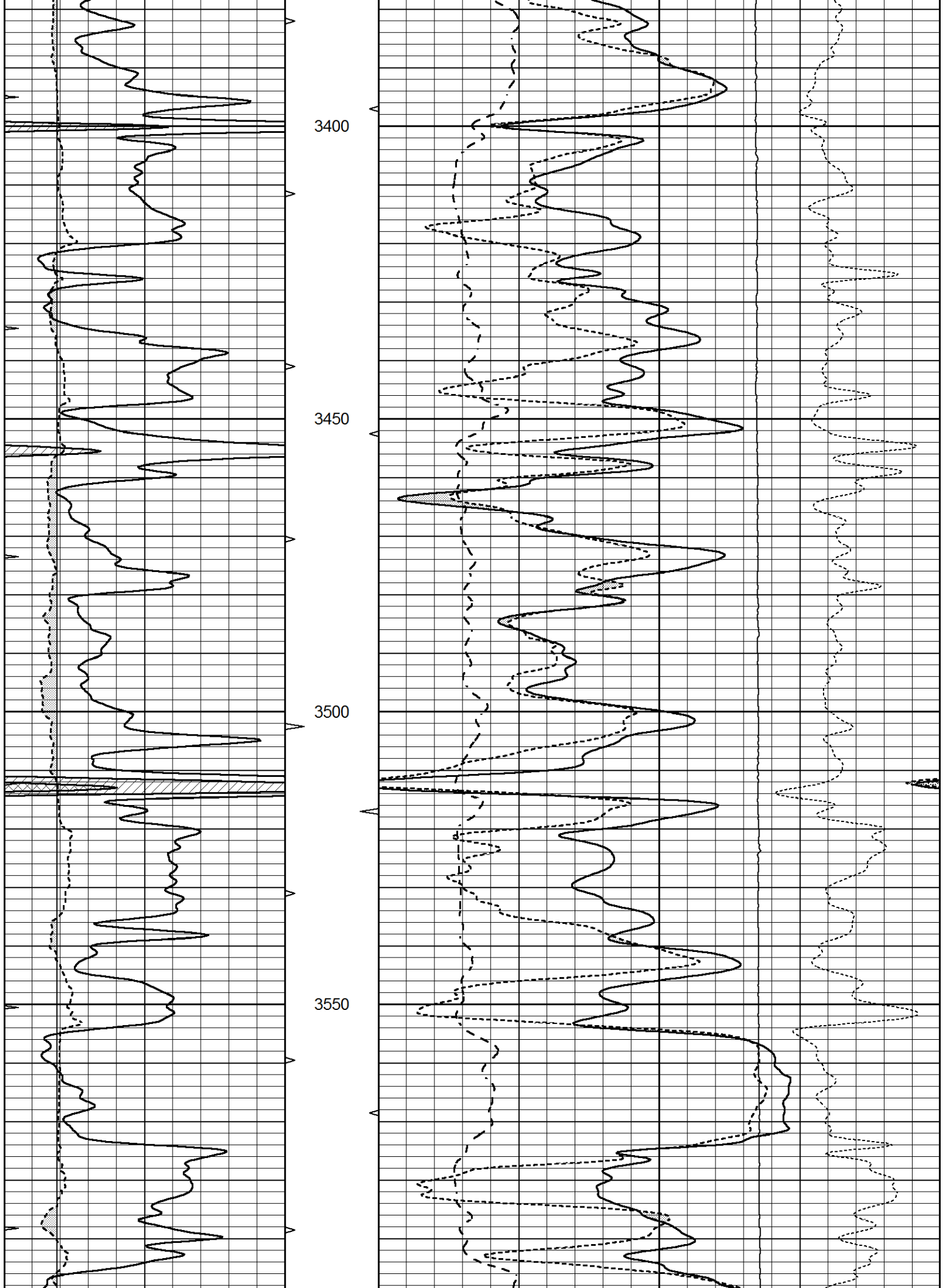


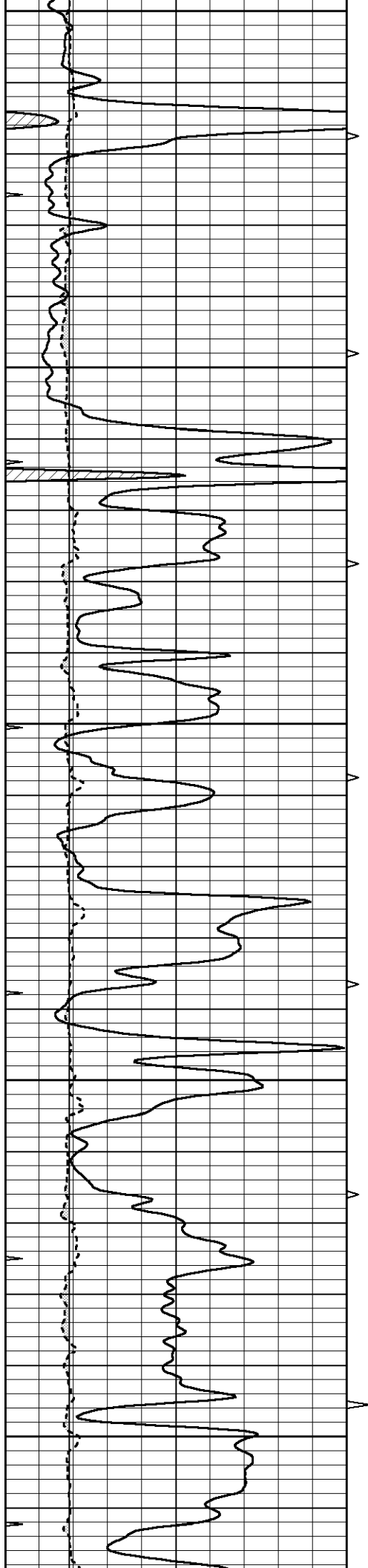
MAIN SECTION

Database File 8414pe.db
 Dataset Pathname pass3.1M
 Presentation Format _ldt_neu
 Dataset Creation Sat Feb 24 01:53:56 2024
 Charted by Depth in Feet scaled 1:240

0	GAMMA RAY (GAPI)	150	ABHV	30	COMPENSATED DENSITY (pu)			-10	
6	CALIPER (in)	16	10 (ft3)	0	COMPENSATED NEUTRON (pu)			-10	
0	MINMK	20	TBHV	0	PE	10	-0.25	CORRECTION (g/cc)	0.25
			0 (ft3)	10			0	LTEN (lb)	5000







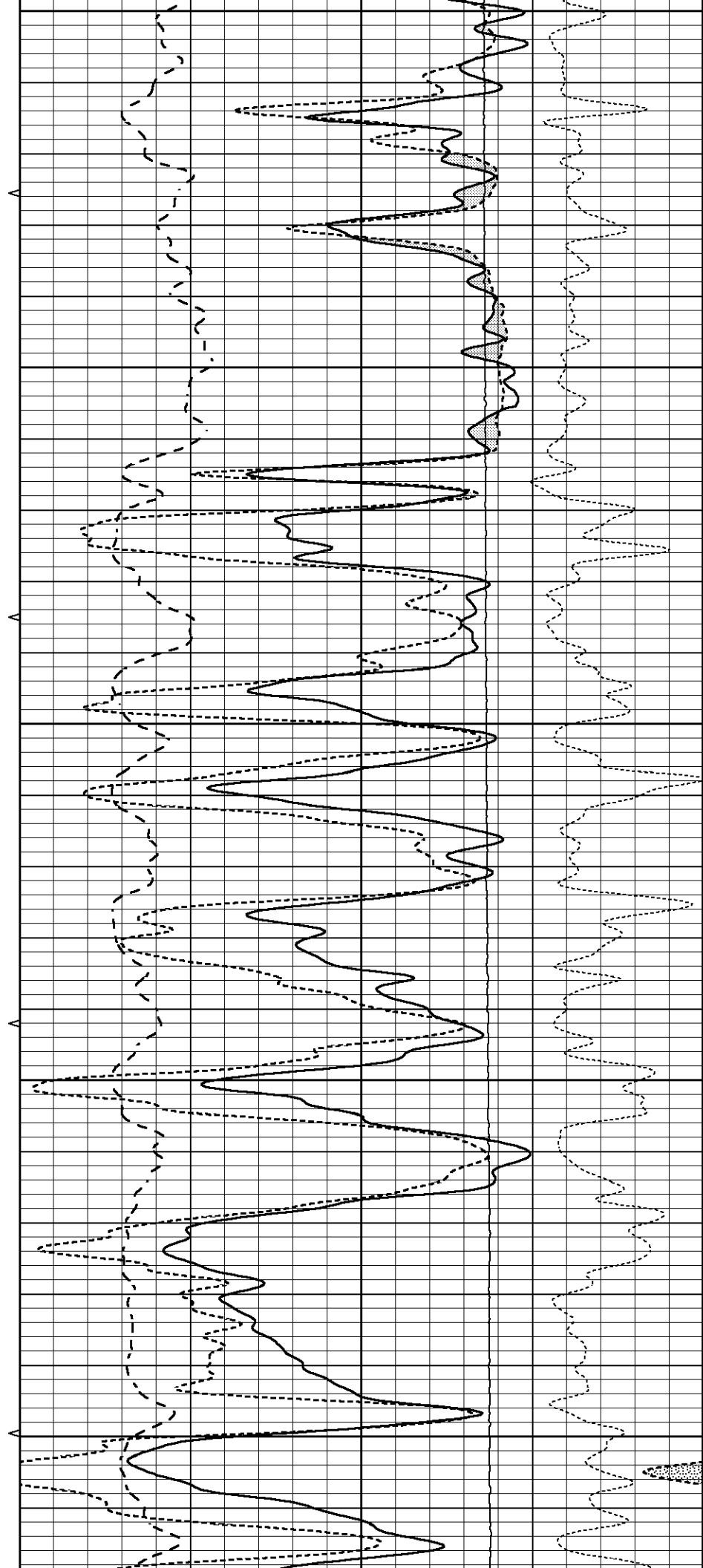
3600

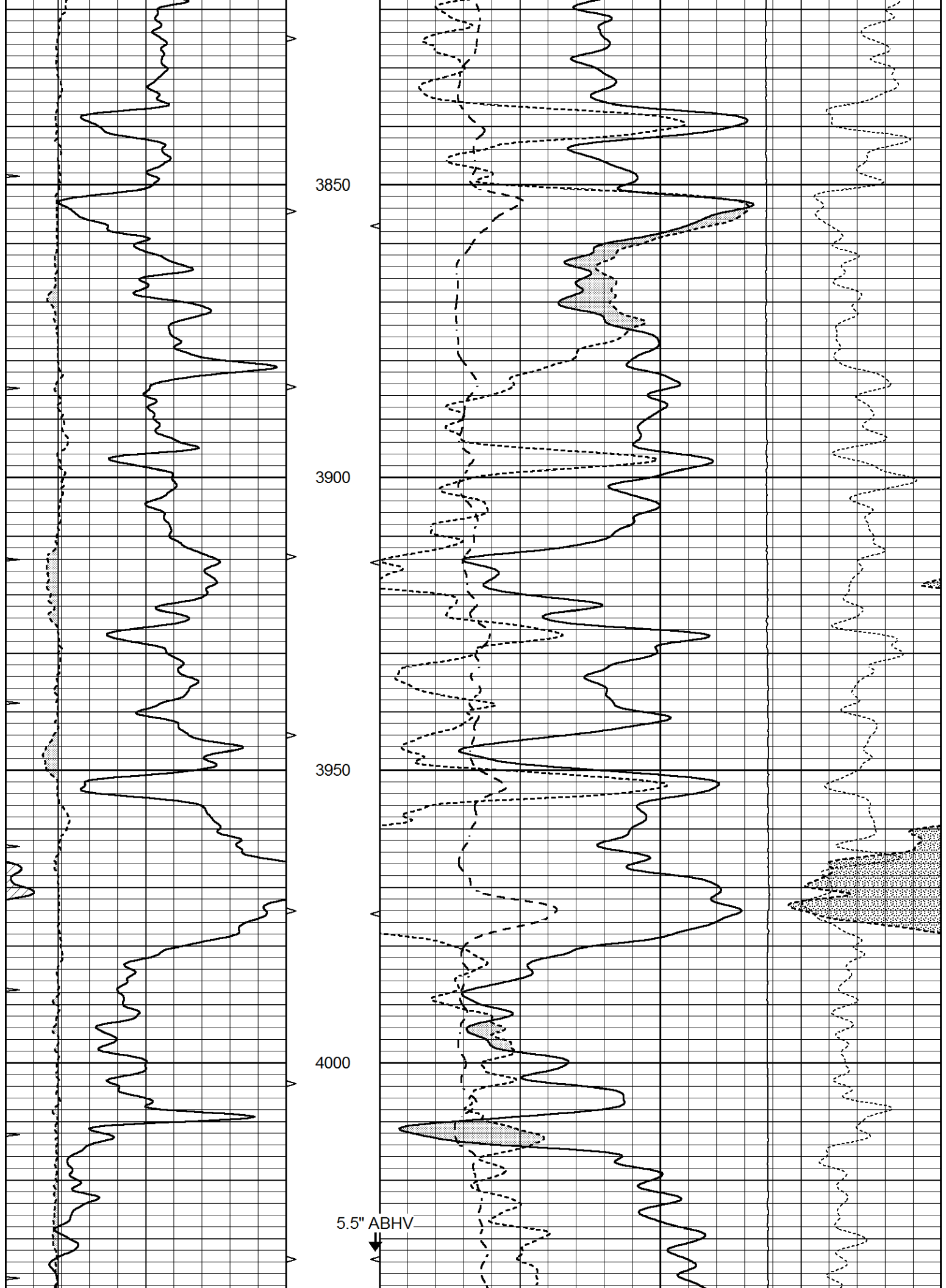
3650

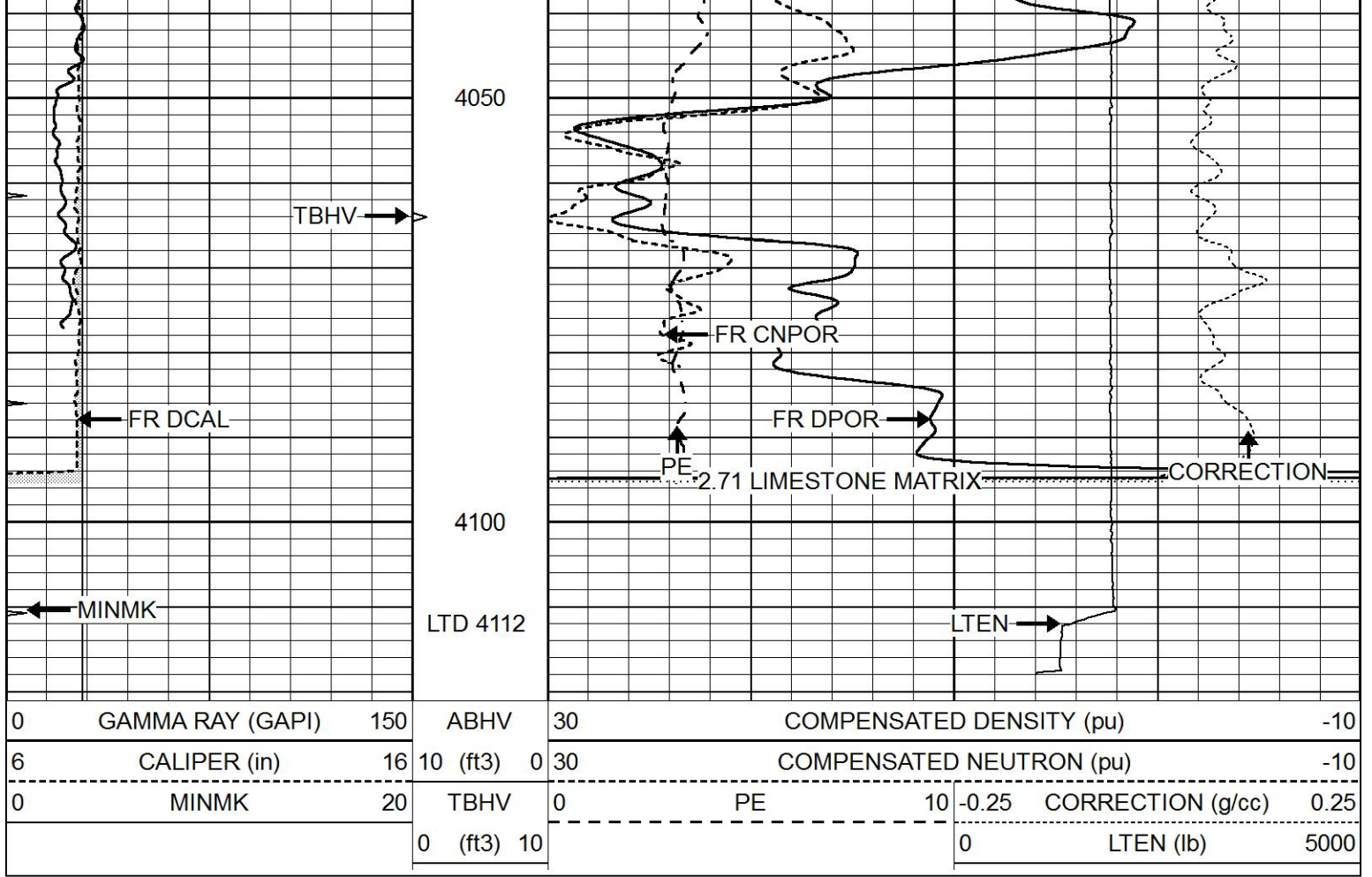
3700

3750

3800



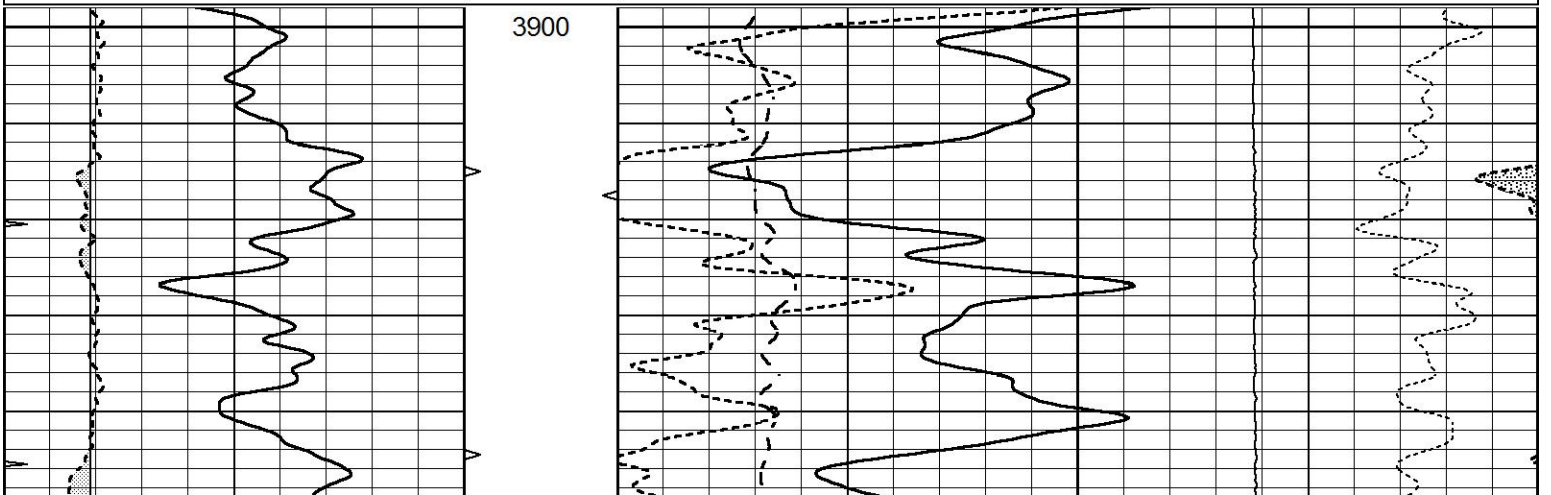


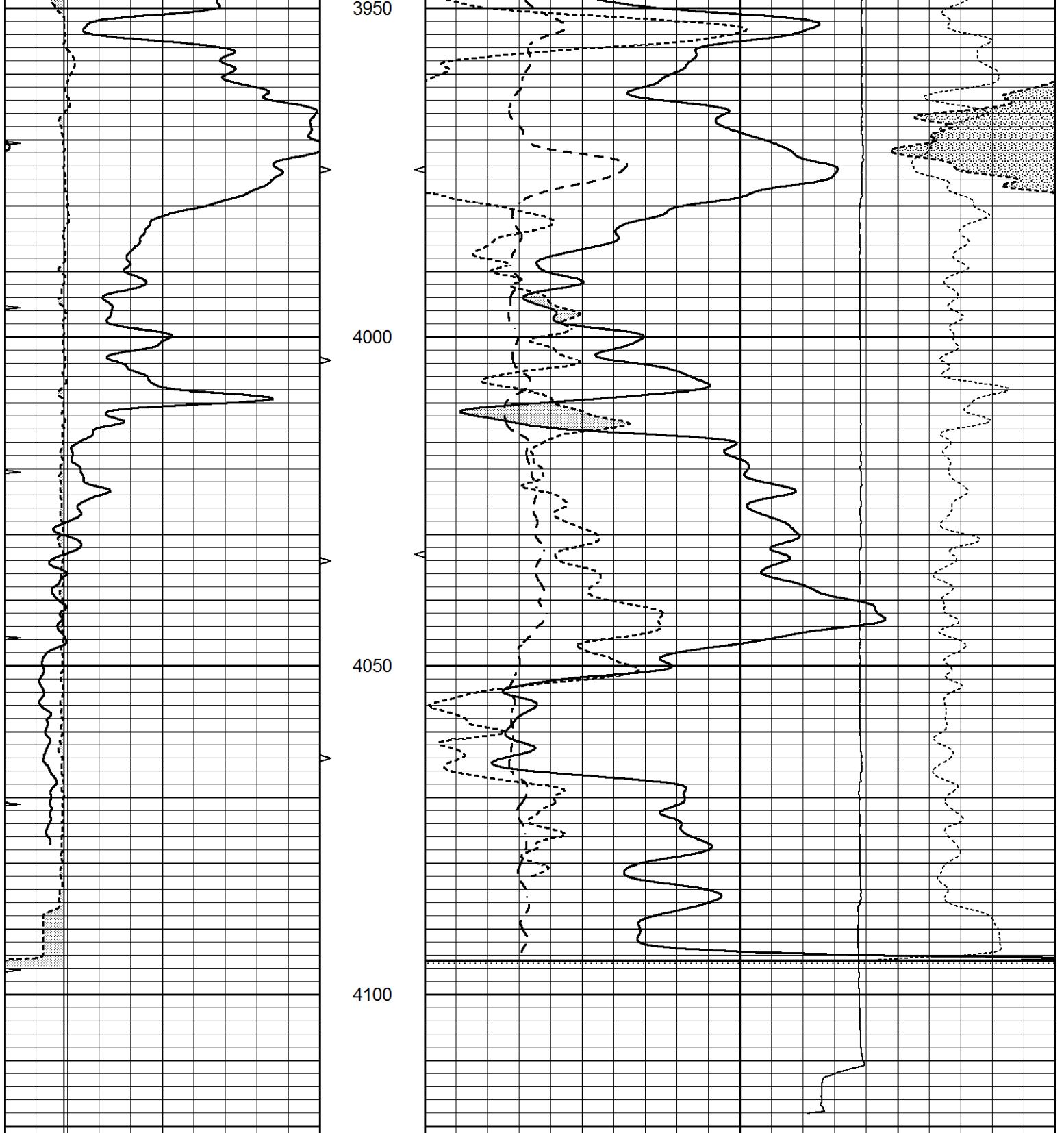


REPEAT SECTION

Database File 8414pe.db
 Dataset Pathname pass2.1R
 Presentation Format _ldt_neu
 Dataset Creation Sat Feb 24 01:14:29 2024
 Charted by Depth in Feet scaled 1:240

0	GAMMA RAY (GAPI)	150	ABHV	30	COMPENSATED DENSITY (pu)	-10
6	CALIPER (in)	16	10 (ft3)	0 30	COMPENSATED NEUTRON (pu)	-10
0	MINMK	20	TBHV	0	PE	10 -0.25
			0 (ft3)	10		CORRECTION (g/cc) 0.25
						0 LTEN (lb) 5000





0	GAMMA RAY (GAPI)	150	ABHV	30	COMPENSATED DENSITY (pu)	-10	
6	CALIPER (in)	16	10 (ft3)	0	COMPENSATED NEUTRON (pu)	-10	
0	MINMK	20	TBHV	0	PE	10	
			0 (ft3)	10	-0.25	CORRECTION (g/cc)	0.25
					0	LTEN (lb)	5000

Calibration Report

Database File 8414pe.db
 Dataset Pathname pass3.1M
 Dataset Creation Sat Feb 24 01:53:56 2024

Dual Induction Calibration Report

Serial-Model:
 Surface Cal Performed:
 Downhole Cal Performed:
 After Survey Verification Performed:

PROBE8-DILG
 Fri Feb 16 23:33:40 2024
 Mon Aug 14 00:39:25 2023
 Mon Jul 28 11:08:27 2008

Surface Calibration

Loop:	Readings			References			Results	
	Air	Loop		Air	Loop		m	b
Deep	0.015	0.648	V	0.000	400.000	mmho/m	660.000	5.000
Medium	0.029	0.796	V	0.000	464.000	mmho/m	650.000	-5.000
Internal:	Zero	Cal		Zero	Cal		m	b
Deep	0.017	0.657	V	0.000	400.000	mmho/m	625.153	-10.619
Medium	0.016	0.757	V	0.000	464.000	mmho/m	625.992	-9.739

Downhole Calibration

	Readings			References			Results	
	Zero	Cal		Zero	Cal		m'	b'
Deep	0.000	0.000	mmho/m	2.011	405.777	mmho/m	1.000	0.000
Medium	0.000	0.000	mmho/m	7.590	503.393	mmho/m	1.000	0.000
LL3		7.500	V		1500.000	Ohm-m		
		0.000	V		20.000	Ohm-m		
		-7.200	V		3800.000	mmho-m		

After Survey Verification

	Readings			Targets			Results	
	Zero	Cal		Zero	Cal		m'	b'
Deep	0.000	0.000	mmho/m	0.000	0.000	mmho/m	0.000	0.000
Medium	0.000	0.000	mmho/m	0.000	0.000	mmho/m	0.000	0.000
LL3		1.000	Ohm-m		1.000	Ohm-m		
		0.000	Ohm-m		0.000	Ohm-m		
		1.000	mmho-m		1.000	mmho-m		

Litho Density Calibration Report
 Serial: 001 Model: PRB

Master Calibration

Performed Tue Aug 02 14:54:49 2022

	Background	Magnesium	Aluminum	Aluminum+Fe	
Window 1	1540.1	9840.1	3279.8	3001.8	cps
Window 2	1435.6	8495.4	2920.3	2720.3	cps
Window 3	1167.4	4527.9	1868.6	1810.1	cps
Window 4	344.6	343.5	346.7	342.3	cps
Long Space	0.0	7059.8	1484.8	1284.7	cps
Short Space	3.3	2502.7	1618.3	1368.5	cps
Rho		1.7100	2.5900	0.0000	g/cc
Pe		2.0000	2.7500	5.7900	
Rib Angle	: 44.4	Rib Slope	: 0.979	Density/Spine Ratio	: 0.544
Spine Angle	: 74.4	Spine Slope	: 3.576	Spine Intercept	: -19.1

Before Survey Verification

Performed Wed Dec 31 18:00:00 1969

Window 1	0.0	0.0	0.0	0.0 cps
Window 2	0.0	0.0	0.0	0.0 cps
Window 3	0.0	0.0	0.0	0.0 cps
Window 4	0.0	0.0	0.0	0.0 cps

Long Space	0.0	0.0	0.0	0.0	cps
Short Space	0.0	0.0	0.0	0.0	cps
Measured Rho		0.0000	0.0000	0.0000	g/cc
Measured Correction		0.0000	0.0000	0.0000	g/cc
Measured Pe			0.0000	0.0000	

After Survey Verification

Performed Wed Dec 31 18:00:00 1969

Window 1	0.0	0.0	0.0	0.0	cps
Window 2	0.0	0.0	0.0	0.0	cps
Window 3	0.0	0.0	0.0	0.0	cps
Window 4	0.0	0.0	0.0	0.0	cps
Long Space	0.0	0.0	0.0	0.0	cps
Short Space	0.0	0.0	0.0	0.0	cps
Measured Rho		0.0000	0.0000	0.0000	g/cc
Measured Correction		0.0000	0.0000	0.0000	g/cc
Measured Pe			0.0000	0.0000	

Compensated Neutron Calibration Report

Serial Number: 070808PMC
Tool Model: NABORS

PRE-SURVEY VERIFICATION

Detector	Readings	Measured	Target
Short Space	cps		
Long Space	cps	pu	pu

POST-SURVEY VERIFICATION

Detector	Readings	Measured	Target
Short Space	cps		
Long Space	cps	pu	pu

Gamma Ray Calibration Report

Serial Number: 070558
Tool Model: OPEN_GR
Performed: Wed Dec 20 03:59:02 2023

Calibrator Value: 1.0 GAPI

Background Reading: 0.0 cps
Calibrator Reading: 1.0 cps

Sensitivity: 0.3000 GAPI/cps