

MICRO LOG



Company: QUAIL OIL & GAS, LC
 Well: ROBINSON #1-26
 Field: MAVID
 County: GRAHAM
 State: KANSAS

Company: QUAIL OIL & GAS, LC
 Well: ROBINSON #1-26
 Field: MAVID
 County: GRAHAM
 State: KANSAS

Location: 838' FNL & 548' FWL
 NE - SW - NW - NW
 SEC 26 TWP 8S RGE 23W
 Permanent Datum: GROUND LEVEL Elevation: 2211
 Log Measured From: KELLY BUSHING 5' A.G.L.
 Drilling Measured From: KELLY BUSHING
 Other Services: CDL/CNL/PE DIL/SONIC
 Elevation: K.B. 2216, D.F. 2214, G.L. 2211

Date	2/24/24
Run Number	TWO
Depth Driller	4116
Depth Logger	4112
Bottom Logged Interval	4096
Top Log Interval	3200
Casing Driller	8.675@263
Casing Logger	263
Bit Size	7.785
Type Fluid in Hole	CHEMICAL MUD
Density / Viscosity	9.2/59
pH / Fluid Loss	10.0/5.0
Source of Sample	FLOWLINE
Rm @ Meas. Temp	2.00@64F
Rmf @ Meas. Temp	1.50@64F
Rmc @ Meas. Temp	2.40@64F
Source of Rmf / Rmc	MEASUREMENT
Rm @ BHT	1.09@117F
Time Circulation Stopped	3.5 HOURS
Time Logger on Bottom	2.00 A.M.
Maximum Recorded Temperature	117F
Equipment Number	922339
Location	HAYS, KANSAS
Recorded By	JEFF LUEBBERS
Witnessed By	ROGER MARTIN

<<< Fold Here >>>

All interpretations are opinions based on inferences from electrical or other measurements and we cannot and do not guarantee the accuracy or correctness of any interpretation, and we shall not, except in the case of gross or willful negligence on our part, be liable or responsible for any loss, costs, damages, or expenses incurred or sustained by anyone resulting from any interpretation made by any of our officers, agents or employees. These interpretations are also subject to our general terms and conditions set out in our current Price Schedule.

15-065-24307-0000 Comments

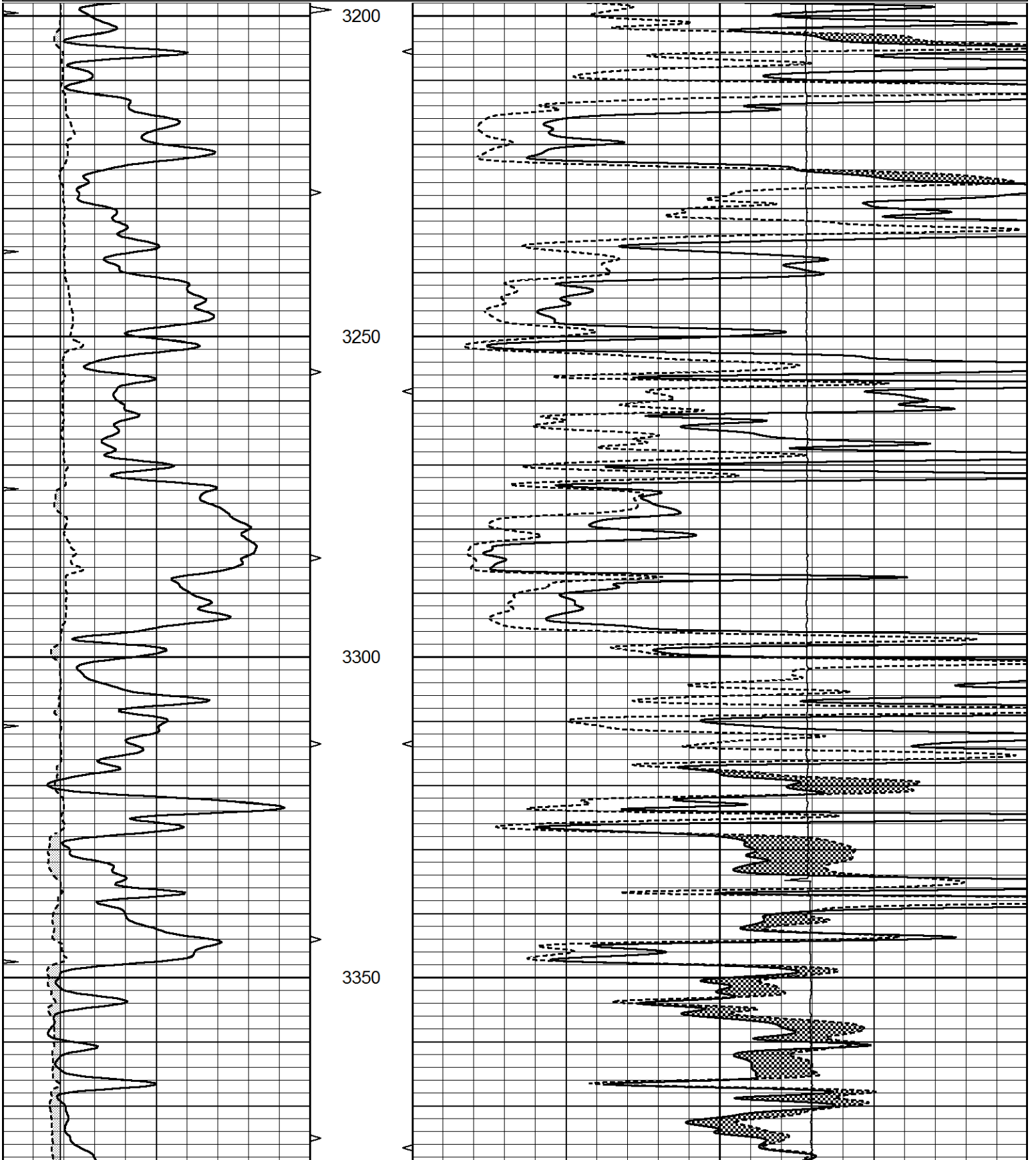
THANK YOU FOR USING ELI WIRELINE HAYS. KANSAS (785) 628-6395
 DIRECTIONS
 HILL CITY, KS., S. OF RIVER BRIDGE ON HWY 283 TO "O RD./RIVER RD.) 1W. TO "265TH AVE.",
 1/2S., 1/4W., S. INTO

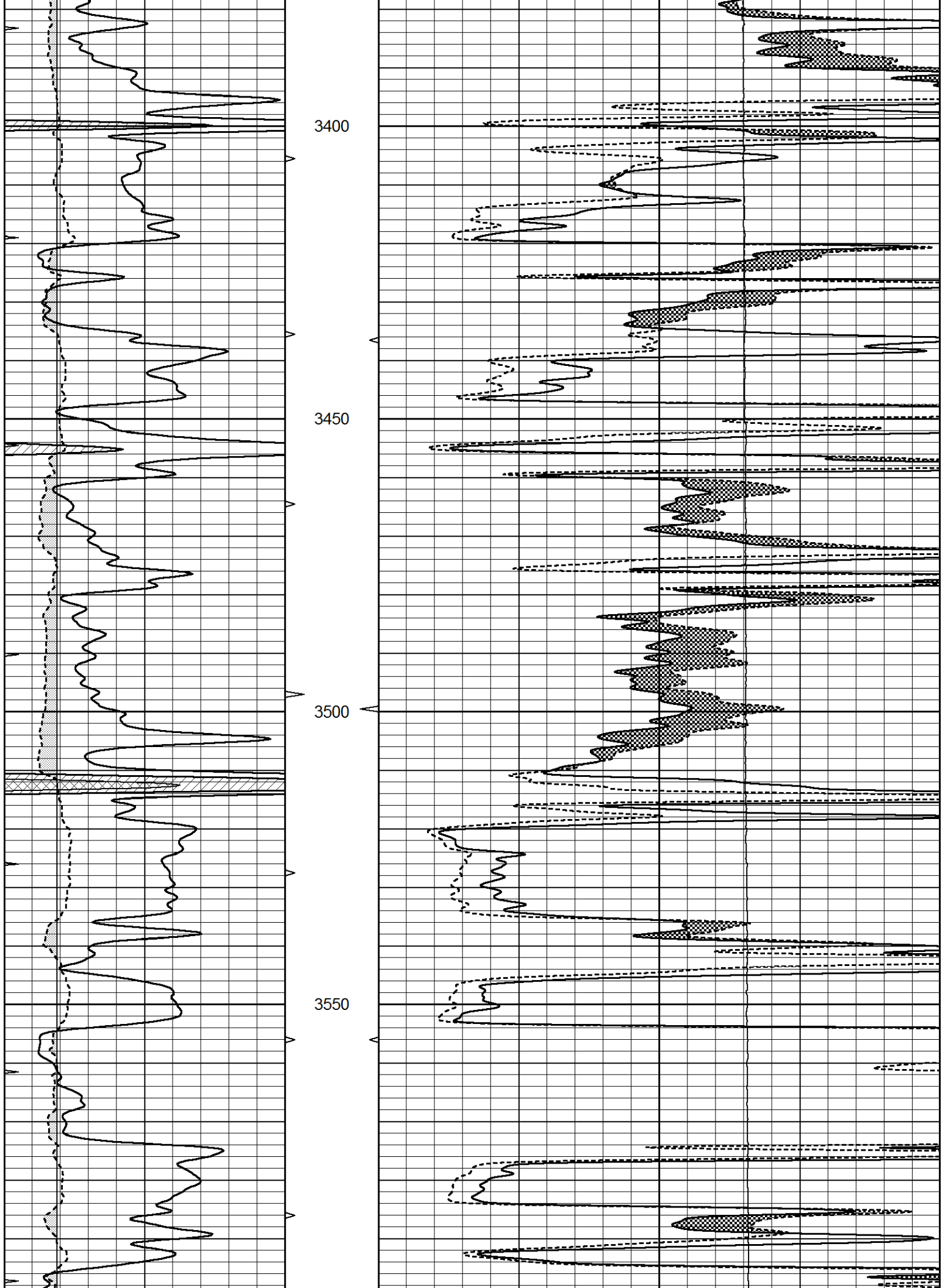


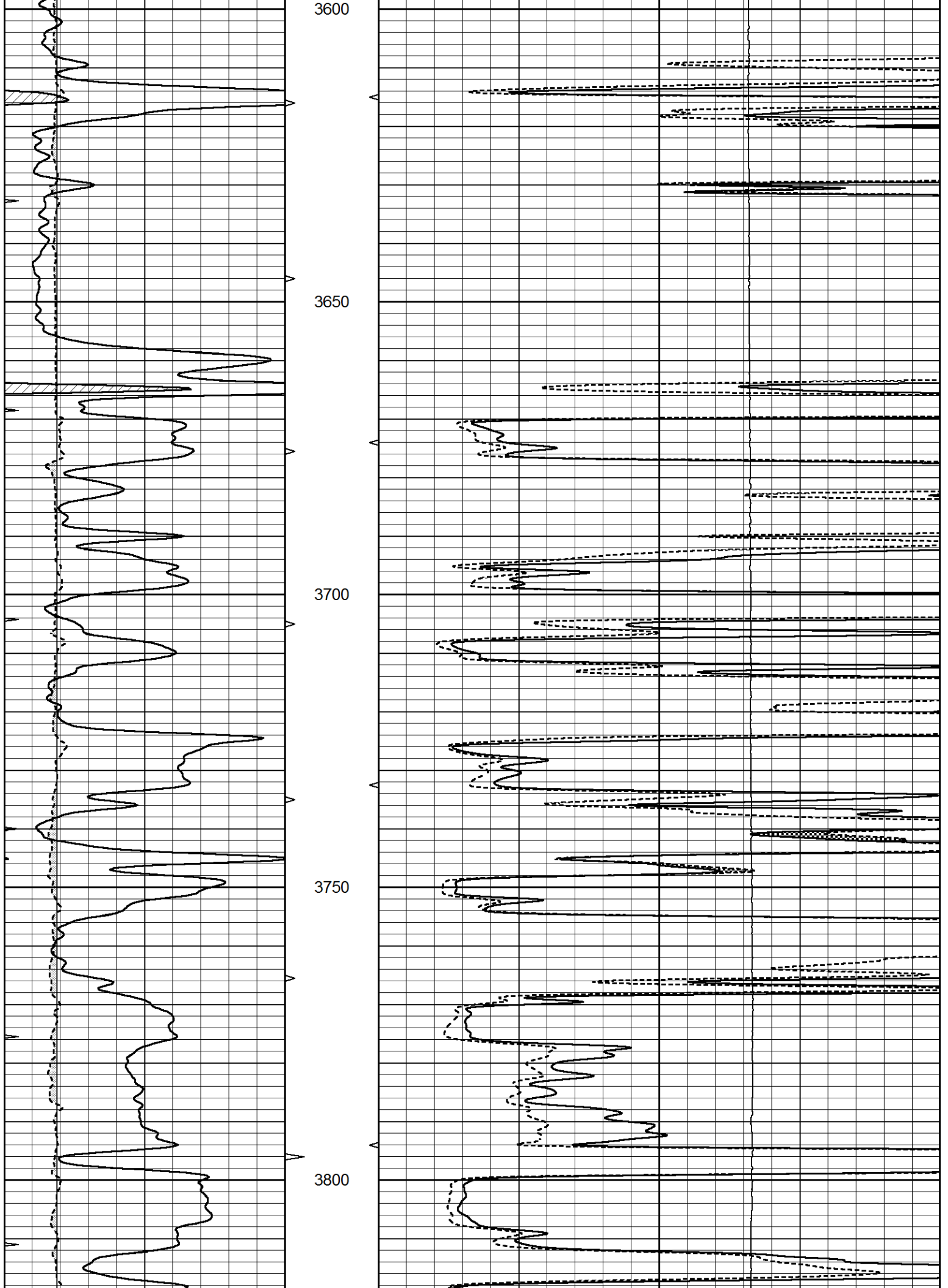
MAIN SECTION

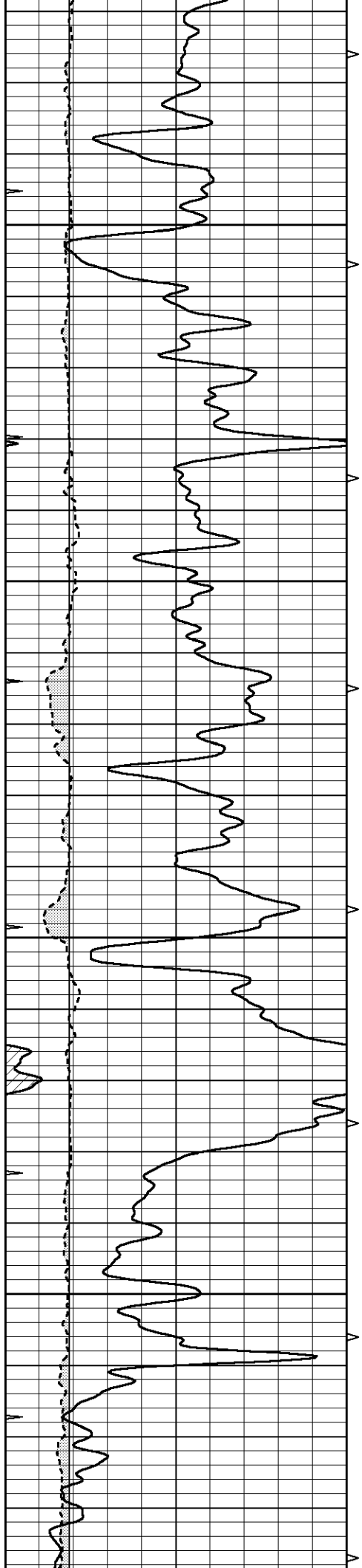
Database File 8414pe.db
 Dataset Pathname pass6.1
 Presentation Format _micro
 Dataset Creation Sat Feb 24 02:53:18 2024
 Charted by Depth in Feet scaled 1:240

0	GAMMA RAY (GAPI)	150	ABHV	0	MEL1.5 (Ohm-m)	40
6	CALIPER (in)	16	10 (ft3)	0	MEL2.0 (Ohm-m)	40
0	MINMK	20	TBHV	0	LTEN (lb)	5000
			0 (ft3)	10		









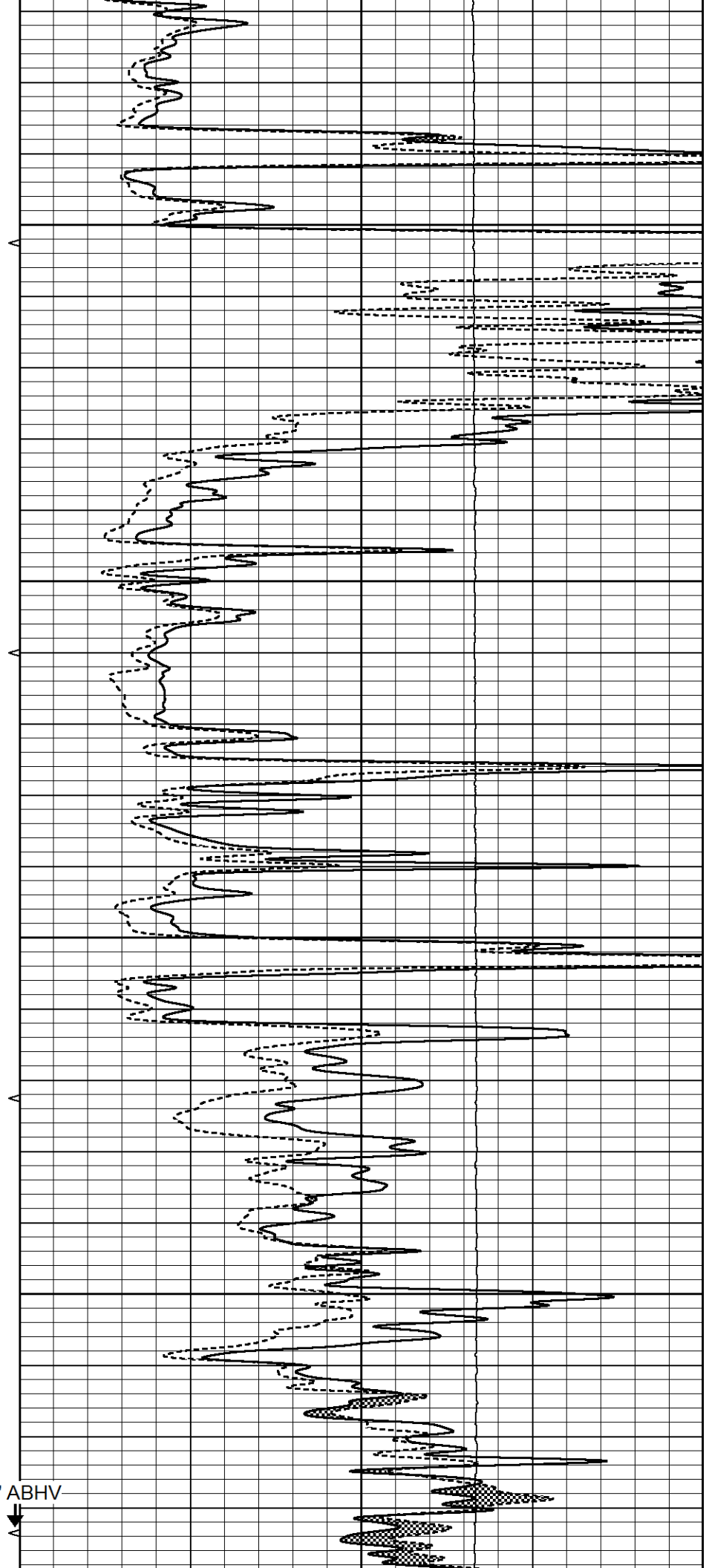
3850

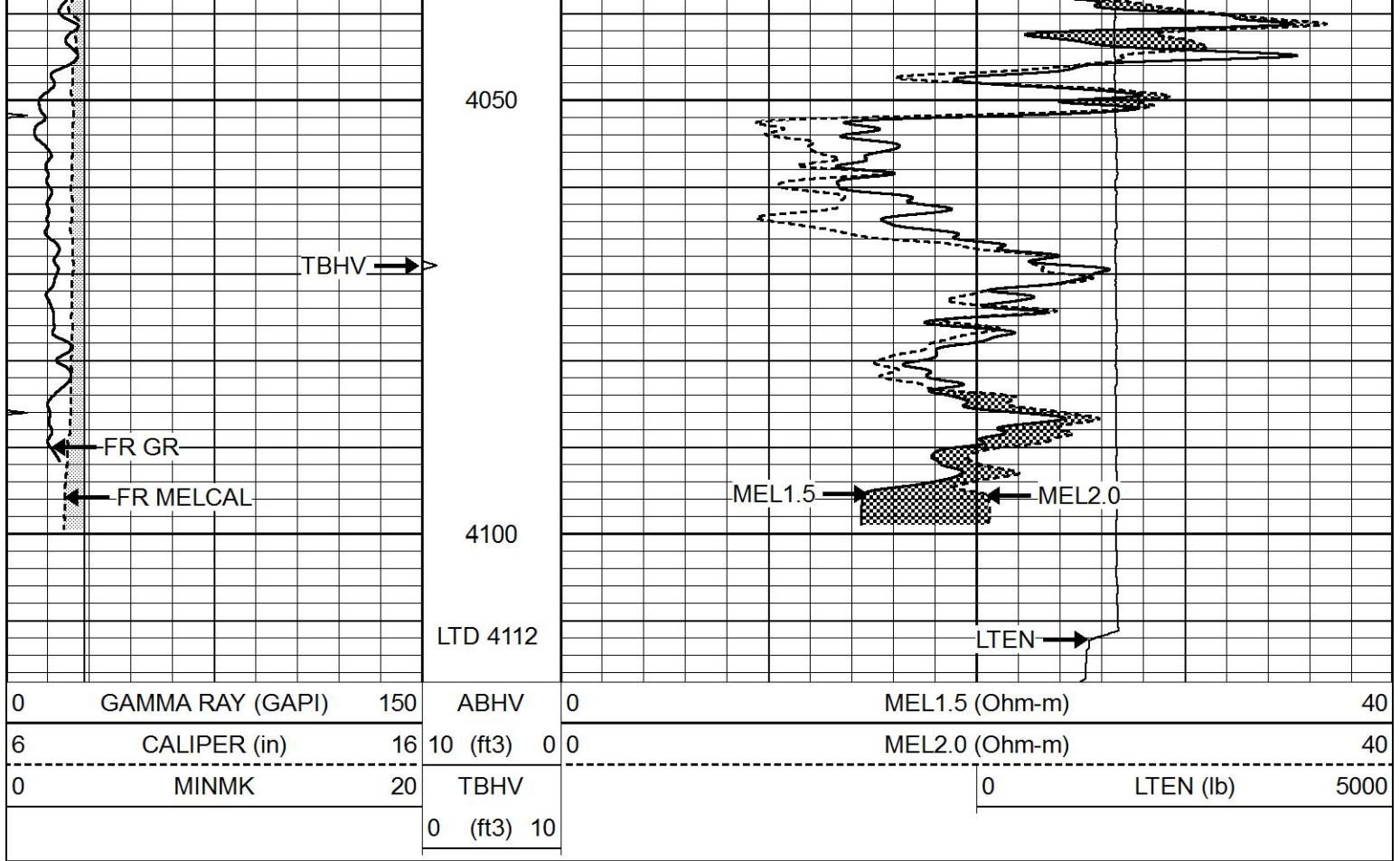
3900

3950

4000

5.5" ABHV

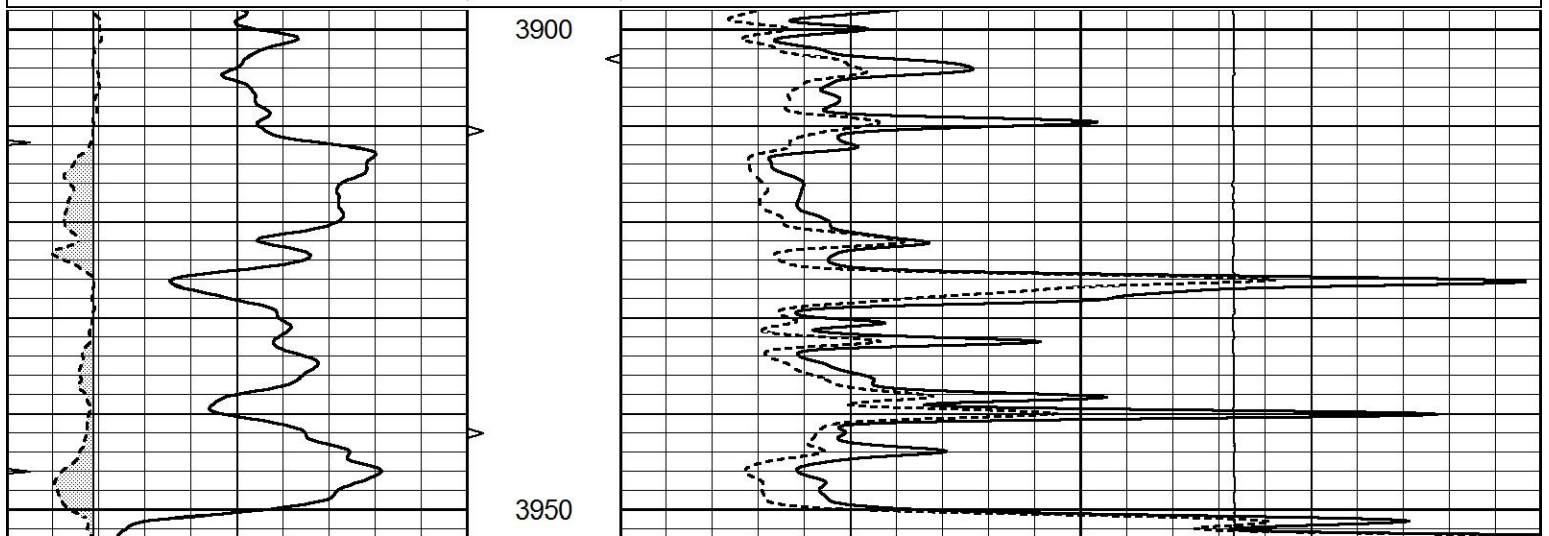


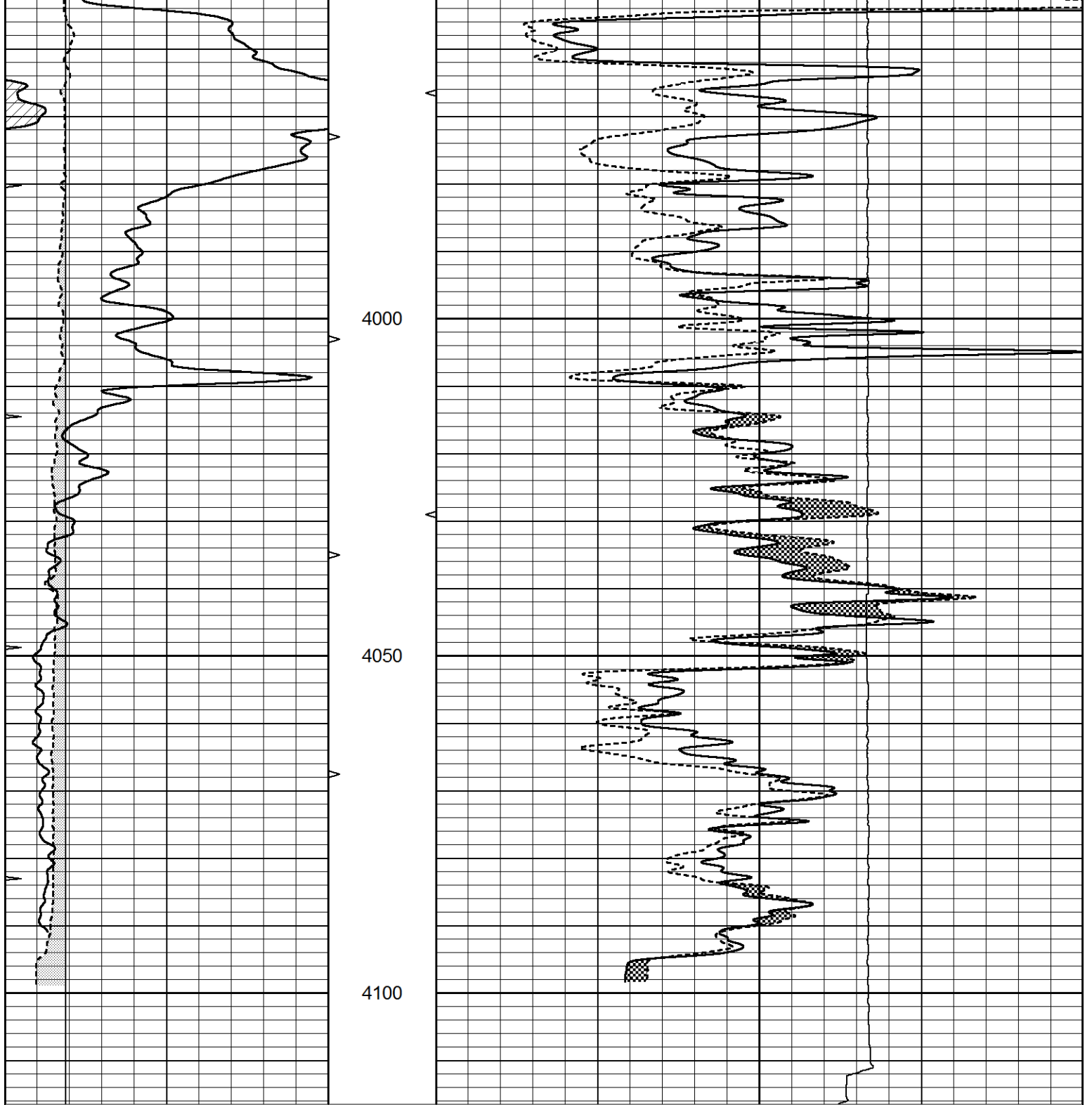


REPEAT SECTION

Database File 8414pe.db
 Dataset Pathname pass5.1
 Presentation Format _micro
 Dataset Creation Sat Feb 24 02:25:35 2024
 Charted by Depth in Feet scaled 1:240

0	GAMMA RAY (GAPI)	150	ABHV	0	MEL1.5 (Ohm-m)	40	
6	CALIPER (in)	16	10 (ft3) 0	0	MEL2.0 (Ohm-m)	40	
0	MINMK	20	TBHV		0	LTEN (lb)	5000
			0 (ft3) 10				





0	GAMMA RAY (GAPI)	150	ABHV	0	MEL1.5 (Ohm-m)	40
6	CALIPER (in)	16	10 (ft3)	0	MEL2.0 (Ohm-m)	40
0	MINMK	20	TBHV		0	LTEN (lb)
			0 (ft3)	10		5000

Calibration Report

Database File 8414pe.db
 Dataset Pathname pass6.1
 Dataset Creation Sat Feb 24 02:53:18 2024

MICRO Calibration Report

Serial Number: 070910
 Tool Model: Proben

Performed:

Tue Feb 20 08:37:06 2024

Caliper Calibration:

Gain=3.540

Offset=1.841

References
Readings

Low Cal
8.000
1.740

High Cal
16.000
4.000

1.5" Calibration:

Gain=58.000

Offset=-0.500

References
Readings

Low Cal
0.000
0.000

High Cal
20.000
1.216

2" Calibration:

Gain=62.000

Offset=-0.500

References
Readings

Low Cal
0.000
0.002

High Cal
20.000
1.053

Gamma Ray Calibration Report

Serial Number:
Tool Model:
Performed:

070559
OPEN_GR
Sun Jan 07 11:06:36 2024

Calibrator Value:

1.0

GAPI

Background Reading:
Calibrator Reading:

0.0
1.0

cps
cps

Sensitivity:

0.3000

GAPI/cps