



**COMPENSATED DENSITY
NEUTRON
LOG**

Company	PATTERSON ENERGY	
Well	R.P. DEVINE #10	
Field	SOLOMON	
County	ELLIS	State KANSAS
Location:	API # : 15 051 27106	Other Services
	2537' FSL & 2310' FEL	ML DIL
Permanent Datum	SEC 23 TWP 11S RGE 19W	Elevation
Log Measured From	Ground Level	1971
Drilling Measured From	KB 8' AGL	K.B. 1979 D.F. 1977 G.L. 1971

Date	03/09/24
Run Number	One
Depth Driller	3580
Depth Logger	3580
Bottom Logged Interval	3560
Top Log Interval	2900'
Casing Driller	8 5/8"@1280'
Casing Logger	1280
Bit Size	7 7/8"
Type Fluid in Hole	Chemical
Density / Viscosity	9.2/56
pH / Fluid Loss	10.0/8.8
Source of Sample	Pit
Rm @ Meas. Temp	1.2@60degf
Rmf @ Meas. Temp	.90@60degf
Rmc @ Meas. Temp	1.44@60degf
Source of Rmf / Rmc	Calculated
Rm @ BHT	0.67@107degf
Time Circulation Stopped	10:00 AM
Time Logger on Bottom	12:30 PM
Maximum Recorded Temperature	107degf
Equipment Number	T-605
Location	Hays, KS.
Recorded By	GUS PFANENSTIEL
Witnessed By	AUSTIN KLAUS

<<< Fold Here >>>

All interpretations are opinions based on inferences from electrical or other measurements and we cannot and do not guarantee the accuracy or correctness of any interpretation, and we shall not, except in the case of gross or willful negligence on our part, be liable or responsible for any loss, costs, damages, or expenses incurred or sustained by anyone resulting from any interpretation made by any of our officers, agents or employees. These interpretations are also subject to our general terms and conditions set out in our current Price Schedule.

Comments

YOCEMENTO NORTH TO RIVERVIEW RD, EAST 1 .25 MILES, SOUTH INTO.

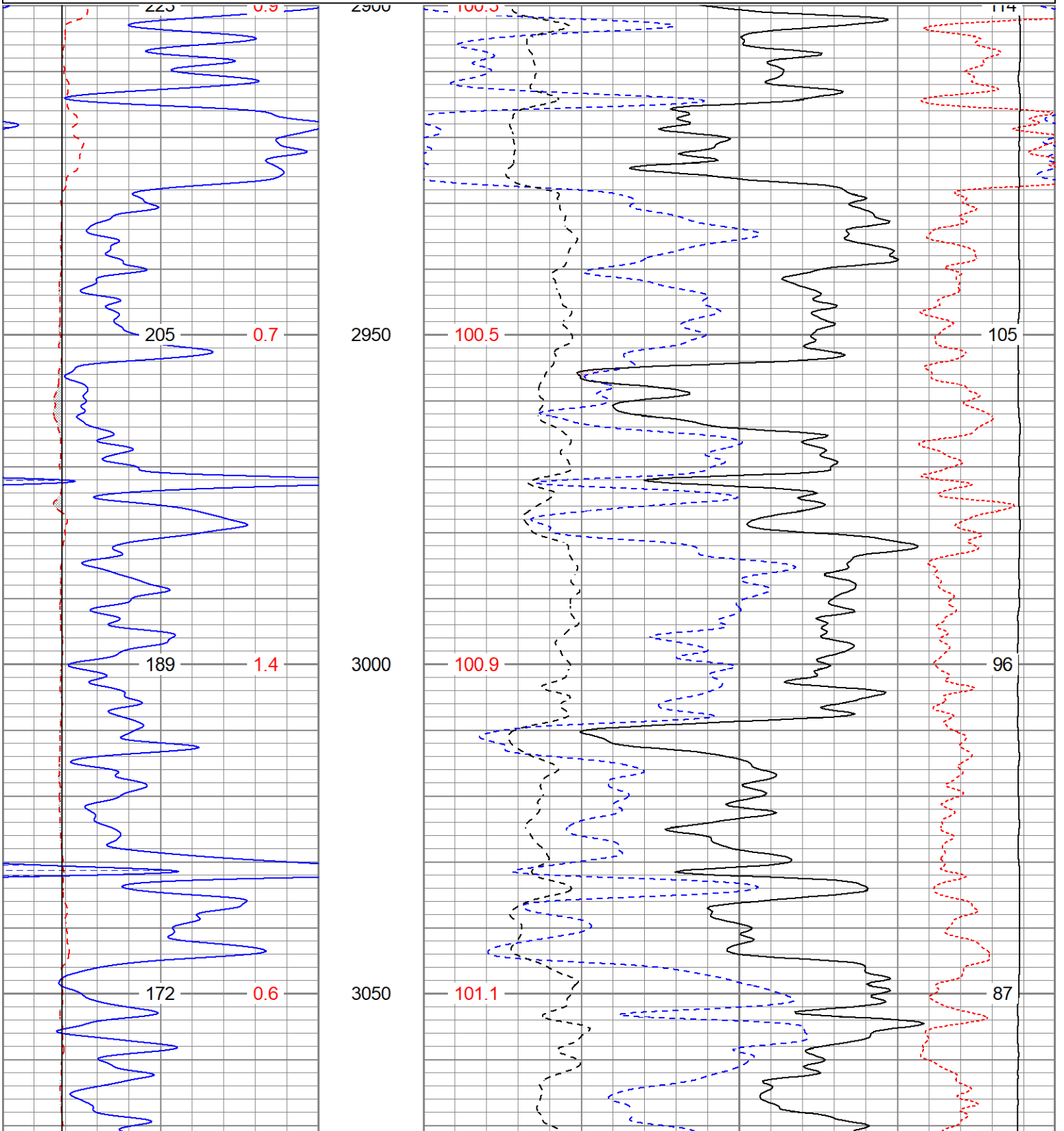
Thanks for using Gemini Wireline LLC
785-625-1182

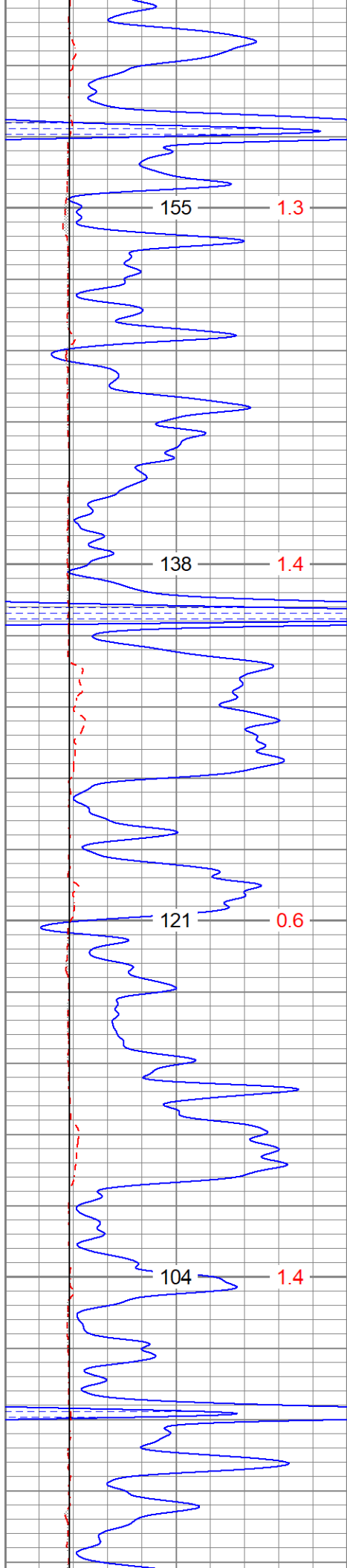


MAIN PASS

Database File perpdevine#10oh.db
 Dataset Pathname pass4.1
 Presentation Format digital_kcdnl
 Dataset Creation Sat Mar 09 13:38:13 2024
 Charted by Depth in Feet scaled 1:240

0	GR (GAPI)	150	30	NPOR (pu)	-10
6	DCAL (in)	16	30	DPOR (pu)	-10
6	BOREID (in)	16	70	DPOR (pu)	30
	TBHV (ft3)	DEVI (deg)	0	Pe (barn)	10
			0	RHOC (g/cc)	0.25
			TEMP (degF)	8000	LTEN (lb)
					0
					ABHV (ft3)





3100

101.5

79

3150

101.8

70

3200

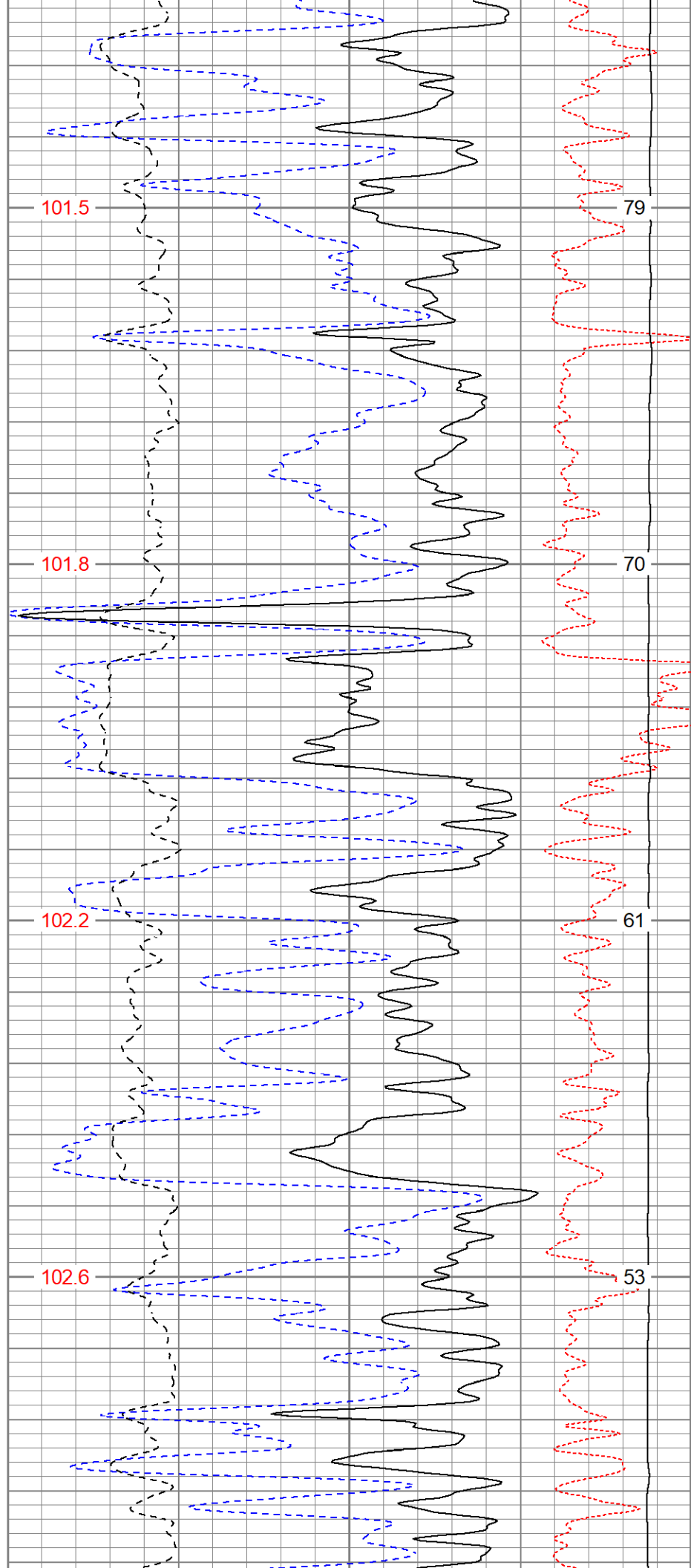
102.2

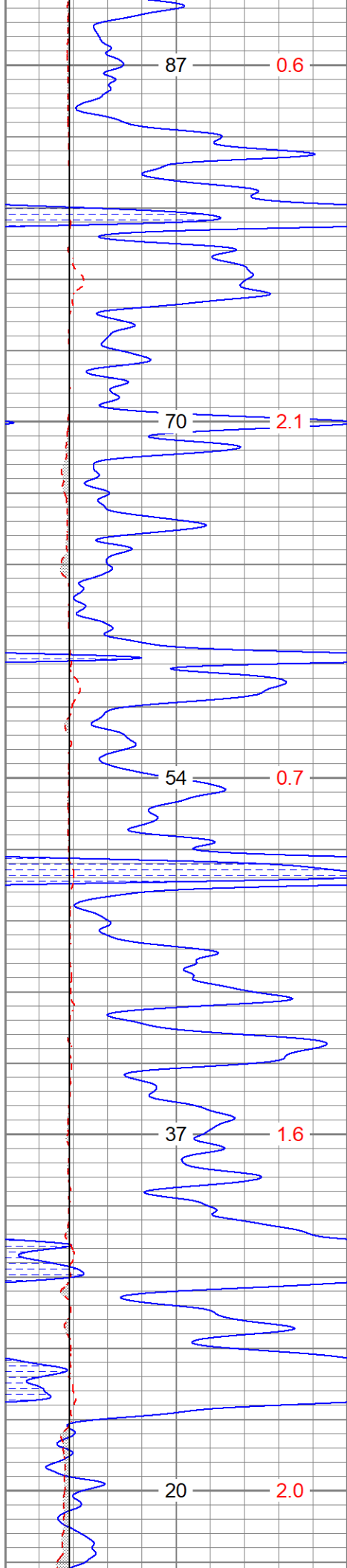
61

3250

102.6

53





3300

102.8

44

3350

103.0

35

3400

103.1

27

3450

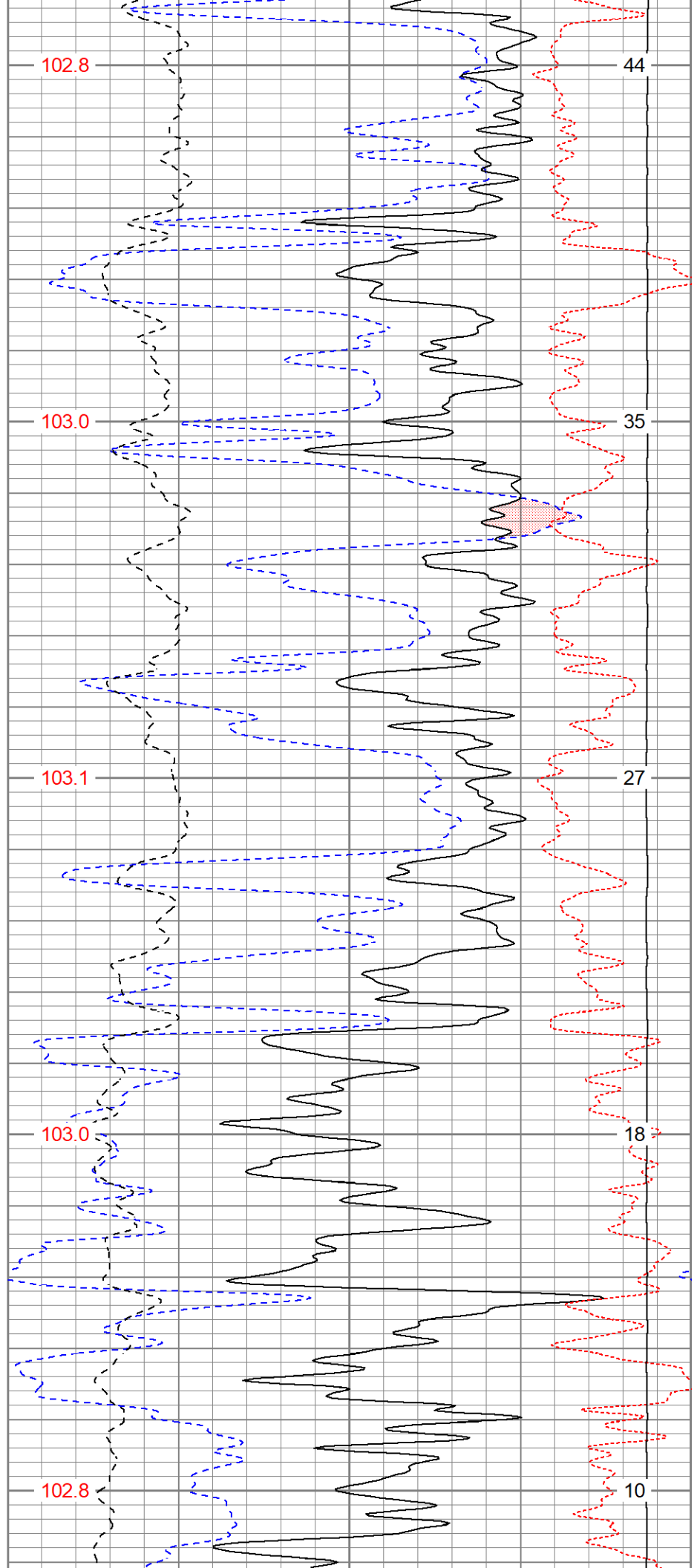
103.0

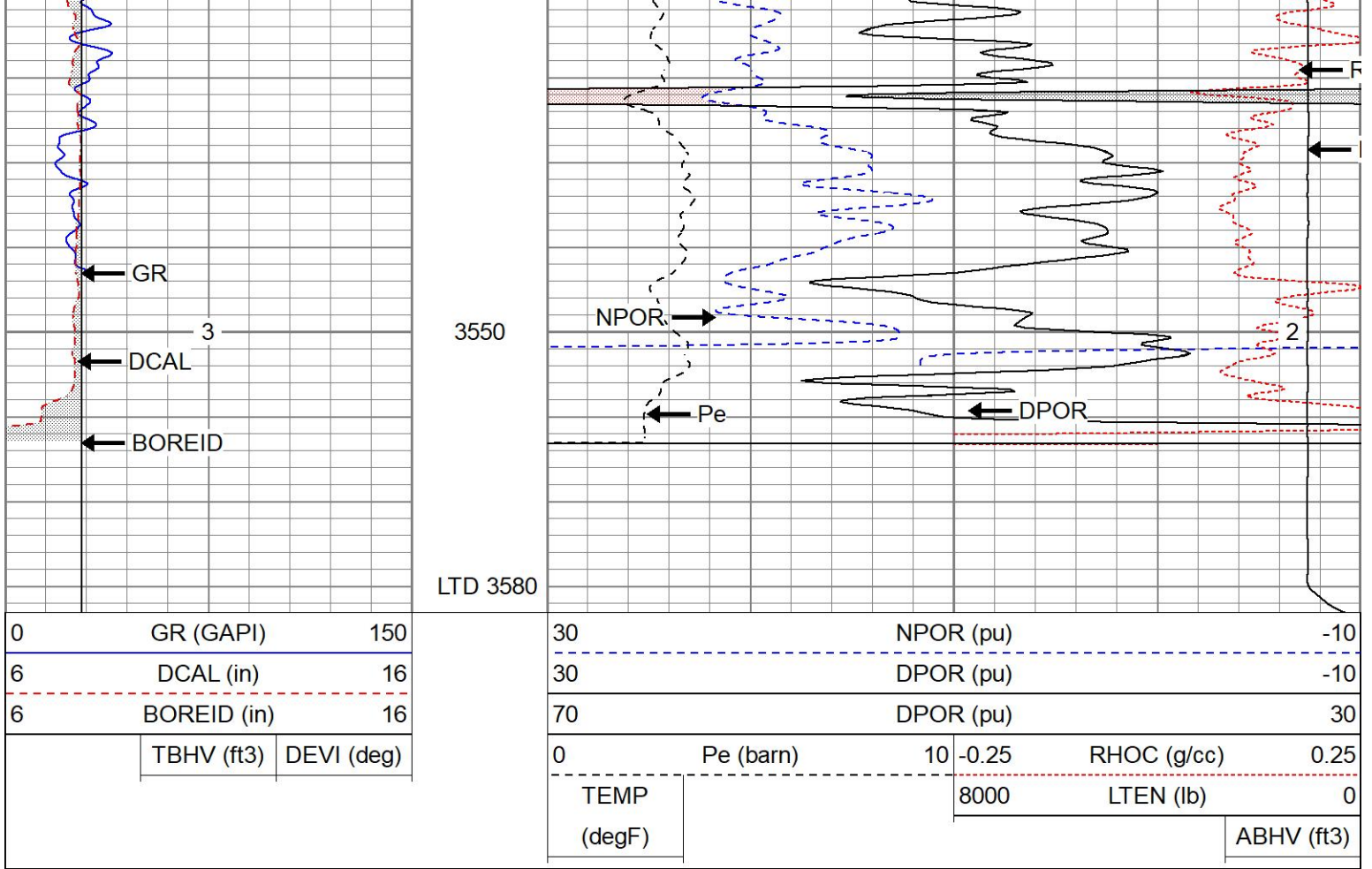
18

3500

102.8

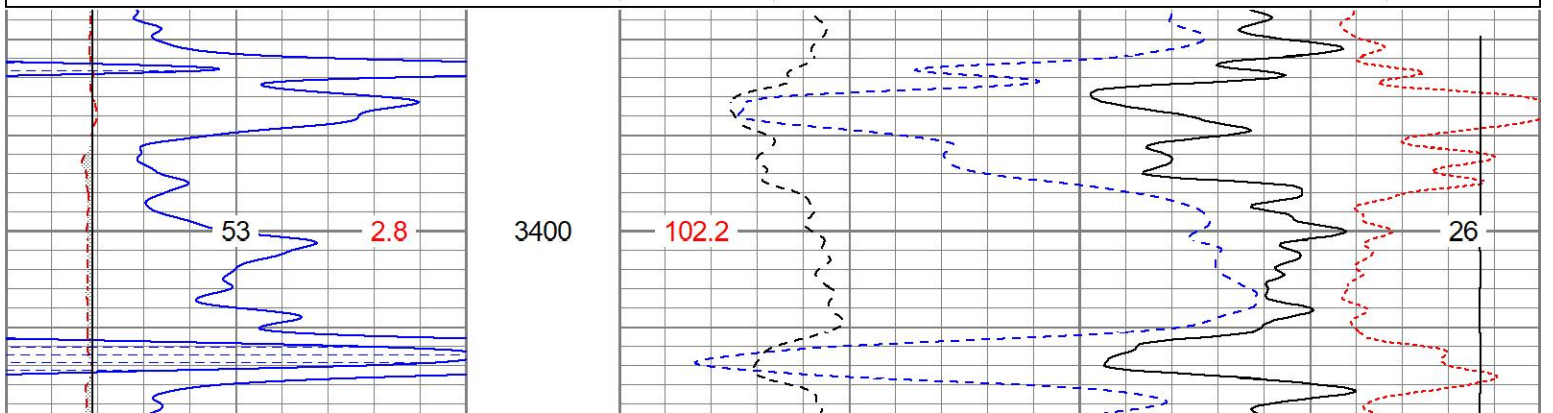
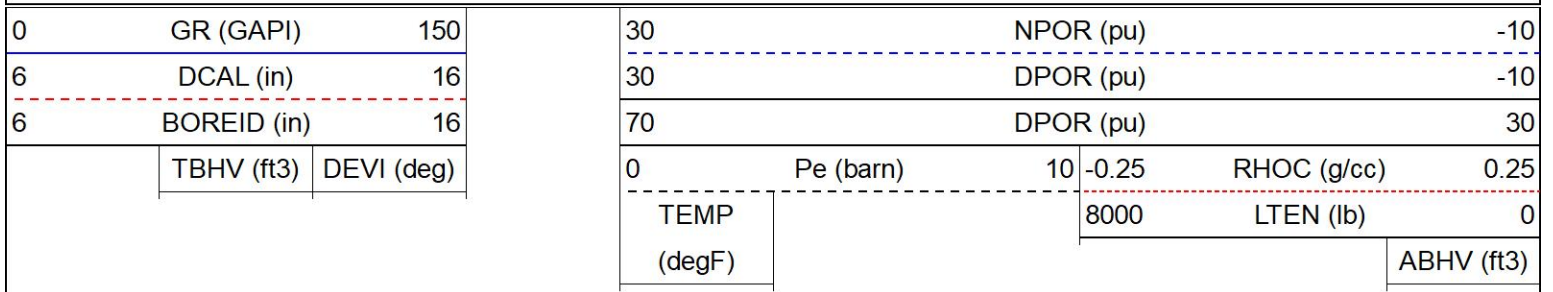
10

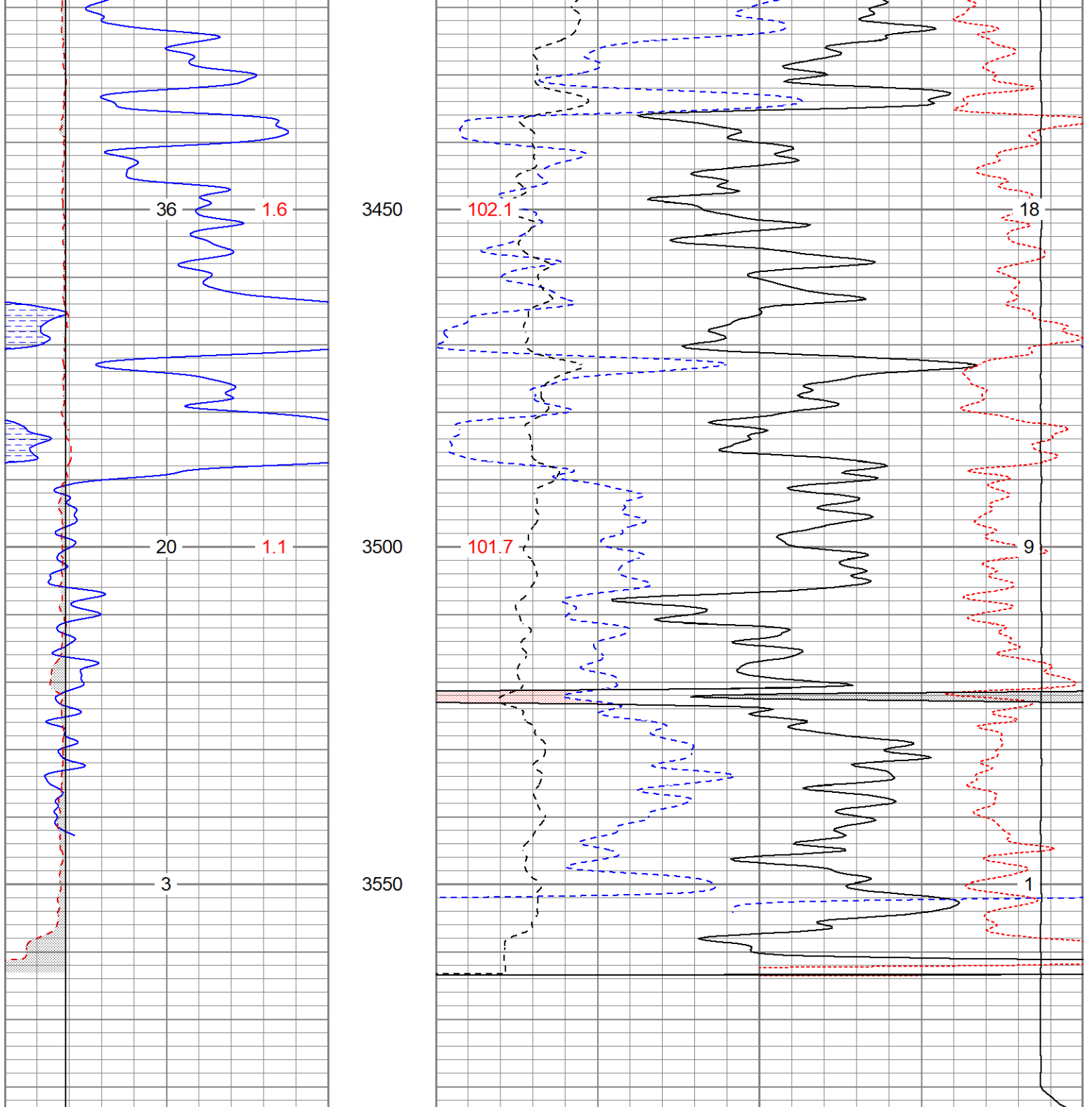




REPEAT SECTION

Database File perpdevine#10oh.db
 Dataset Pathname pass3.1
 Presentation Format digital_kcdnl
 Dataset Creation Sat Mar 09 13:41:24 2024
 Charted by Depth in Feet scaled 1:240





0	GR (GAPI)	150
6	DCAL (in)	16
6	BOREID (in)	16
	TBHV (ft3)	DEVI (deg)

30	NPOR (pu)	-10			
30	DPOR (pu)	-10			
70	DPOR (pu)	30			
0	Pe (barn)	10	-0.25	RHOC (g/cc)	0.25
TEMP (degF)	8000	LTEN (lb)	0	ABHV (ft3)	

Calibration Report

Database File perpdevine#10oh.db
 Dataset Pathname pass3.1
 Dataset Creation Sat Mar 09 13:41:24 2024

Dual Induction Calibration Report

Serial-Model: 1842-ADM
 Surface Cal Performed: Mon Sep 20 22:00:42 2021
 Downhole Cal Performed: Thu Sep 14 13:06:48 2023
 After Survey Verification Performed: Thu Sep 14 13:02:29 2023

Surface Calibration

Loop:	Readings			References			Results	
	Air	Loop	V	Air	Loop		m	b
Deep	0.018	0.672	V	0.000	350.000	mmho/m	535.475	-9.896
Medium	0.003	0.769	V	0.000	400.000	mmho/m	522.607	-1.745
Internal:	Zero	Cal		Zero	Cal		m	b
Deep	0.018	0.672	V	0.000	350.000	mmho/m	535.240	-9.549
Medium	0.003	0.768	V	0.000	550.000	mmho/m	718.637	-2.088

Downhole Calibration

Internal:	Readings			References			Results	
	Zero	Cal		Zero	Cal		m	b
Deep	-0.210	349.810	mmho/m	-0.343	349.810	mmho/m	1.000	-0.133
Medium	6.952	396.760	mmho/m	-0.226	399.745	mmho/m	1.026	-7.360
Shallow	2.495	0.026	V	500.000	2.000	Ohm-m	185.711	-3.319

After Survey Verification

Internal:	Readings			Targets			Results	
	Zero	Cal		Zero	Cal		m'	b'
Deep	0.000	0.000	mmho/m	32.030	5.643	mmho/m	1.000	-0.133
Medium	0.000	0.000	mmho/m	6.952	396.760	mmho/m	1.026	-7.360
Shallow	0.000	0.000	Ohm-m	500.000	2.000	Ohm-m	1.000	0.000

Admyr Lithodensity Calibration Report

Serial-Model: 1C-C
 Source: Blue2
 Master Calibration Performed: Tue Aug 30 10:20:37 2022

Master Calibration

	Density		Far Detector	Near Detector	
Magnesium	1.670	g/cc	6362.49	3546.71	cps
Aluminium	2.640	g/cc	1733.54	2362.69	cps
Aluminium+Sleeve	2.617	g/cc	1657.01	2197.69	cps

Spine Angle = 72.65

Density/Spine Ratio = 0.712

	PE		NLITH	NHARD	
Magnesium	2.000	barn	2520.00	1620.00	cps
Aluminium	3.000	barn	1926.00	1699.00	cps
Aluminium+Sleeve	5.000	barn	915.00	1230.00	cps

M = 0.370

B = -0.079

R = 0.999

	Size		Reading	
Small Ring	8.00	in	8.61	V
Large Ring	14.30	in	12.40	V

Neutron Calibration Report

Serial Number:	AD5139	
Tool Model:	ADMY5139	
Performed:	(Not Performed)	
Calibrator Value:	1	NAPI
Calibrator Reading:	1	cps
Sensitivity:	1	NAPI/cps

Temperature Calibration Report

Serial Number:	WithMC			
Tool Model:	WMC			
Performed:	Fri Apr 19 12:15:04 2019			
	Reference		Reading	
Low Reference:	0.00 degF		0.00 degF	
High Reference:	1.00 degF		1.00 degF	
Gain:	1.00			
Offset:	0.00			
Delta Spacing	1			

Inclinometer Calibration Report

Performed:	Wed May 5 19:20:48 2021				
	Low Read.	High Read.	Low Ref.	High Ref.	
X Accelerometer	205.00	1843.00	-1.00	1.00	gee
Y Accelerometer	205.00	1843.00	-1.00	1.00	gee
Z Accelerometer					gee

Gamma Ray Calibration Report

Serial Number:	WithMC	
Tool Model:	WMC	
Performed:	Sat Nov 11 16:49:39 2023	
Calibrator Value:	1.0	GAPI
Background Reading:	0.0	cps
Calibrator Reading:	1.0	cps
Sensitivity:	1.1000	GAPI/cps