



MICRO LOG

Company PATTERSON ENERGY
 Well R.P. DEVINE #10
 Field SOLOMON
 County ELLIS
 State KANSAS

Company PATTERSON ENERGY
 Well R.P. DEVINE #10
 Field SOLOMON
 County ELLIS State KANSAS

Location: 2537' FSL & 2310' FEL
 API #: 15 051 27106
 SEC 23 TWP 11S RGE 19W
 Permanent Datum Ground Level Elevation 1971
 Log Measured From KB 8' AGL
 Drilling Measured From KB
 Other Services
 DIL
 CDNL
 Elevation
 K.B. 1979
 D.F. 1977
 G.L. 1971

Date	03/09/24
Run Number	TWO
Depth Driller	3580
Depth Logger	3580
Bottom Logged Interval	3578
Top Log Interval	2900
Casing Driller	8 5/8"@1280'
Casing Logger	1280
Bit Size	7 7/8"
Type Fluid in Hole	Chemical
Density / Viscosity	9.2/56
pH / Fluid Loss	10.0/8.8
Source of Sample	Pit
Rm @ Meas. Temp	1.2@60degf
Rmf @ Meas. Temp	.90@60degf
Rmc @ Meas. Temp	1.44@60degf
Source of Rmf / Rmc	Calculated
Rm @ BHT	0.67@107degf
Time Circulation Stopped	10:00 AM
Time Logger on Bottom	12:30 PM
Maximum Recorded Temperature	107degf
Equipment Number	T-605
Location	Hays, KS.
Recorded By	GUS PFANENSTIEL
Witnessed By	AUSTIN KLAUS

<<< Fold Here >>>

All interpretations are opinions based on inferences from electrical or other measurements and we cannot and do not guarantee the accuracy or correctness of any interpretation, and we shall not, except in the case of gross or willful negligence on our part, be liable or responsible for any loss, costs, damages, or expenses incurred or sustained by anyone resulting from any interpretation made by any of our officers, agents or employees. These interpretations are also subject to our general terms and conditions set out in our current Price Schedule.

Comments

YOCEMENTO NORTH TO RIVERVIEW RD, EAST 1 .25 MILES, SOUTH INTO.
 Thanks for using Gemini Wireline LLC
 785-625-1182

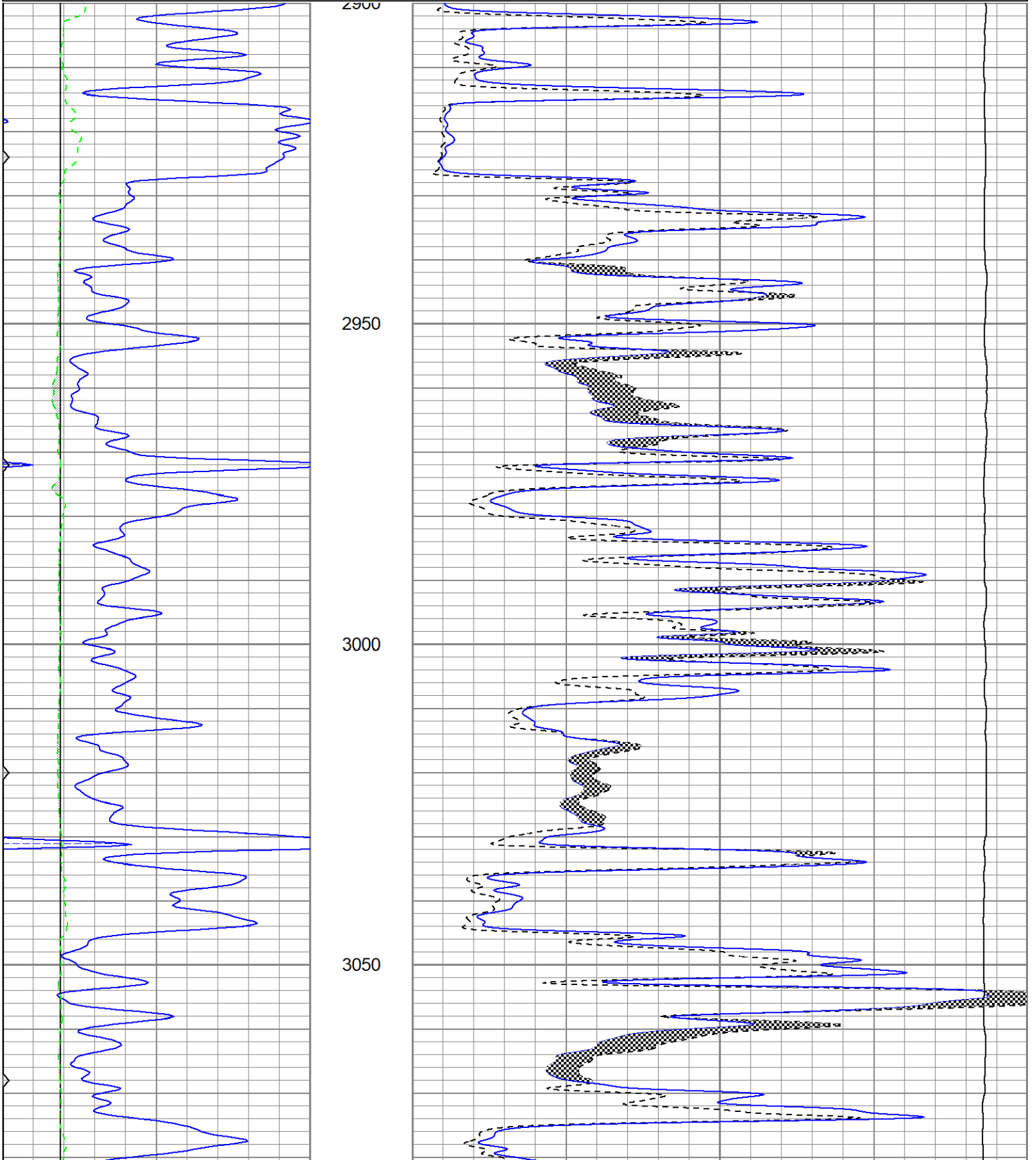


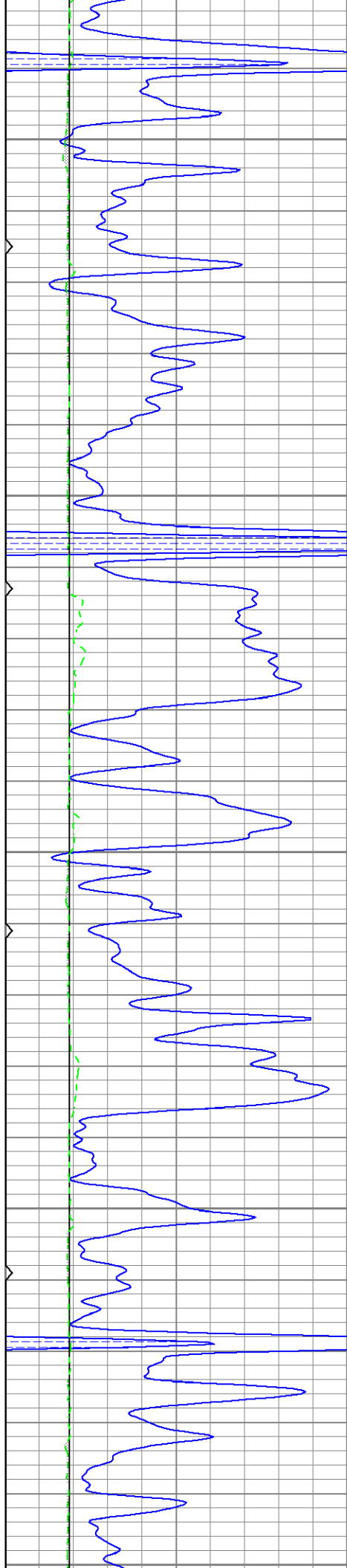
MAIN PASS

Database File perpdevine#10oh.db
 Dataset Pathname pass6MIC
 Presentation Format kml
 Dataset Creation Sat Mar 09 14:31:21 2024
 Charted by Depth in Feet scaled 1:240

0	GR (GAPI)	150
6	BOREID (in)	16
0	MINMK	50
6	DCAL (in)	16

0	MN 2" (Ohm-m)	20
0	MI 1" (Ohm-m)	20
10000	LTEN (lb)	0





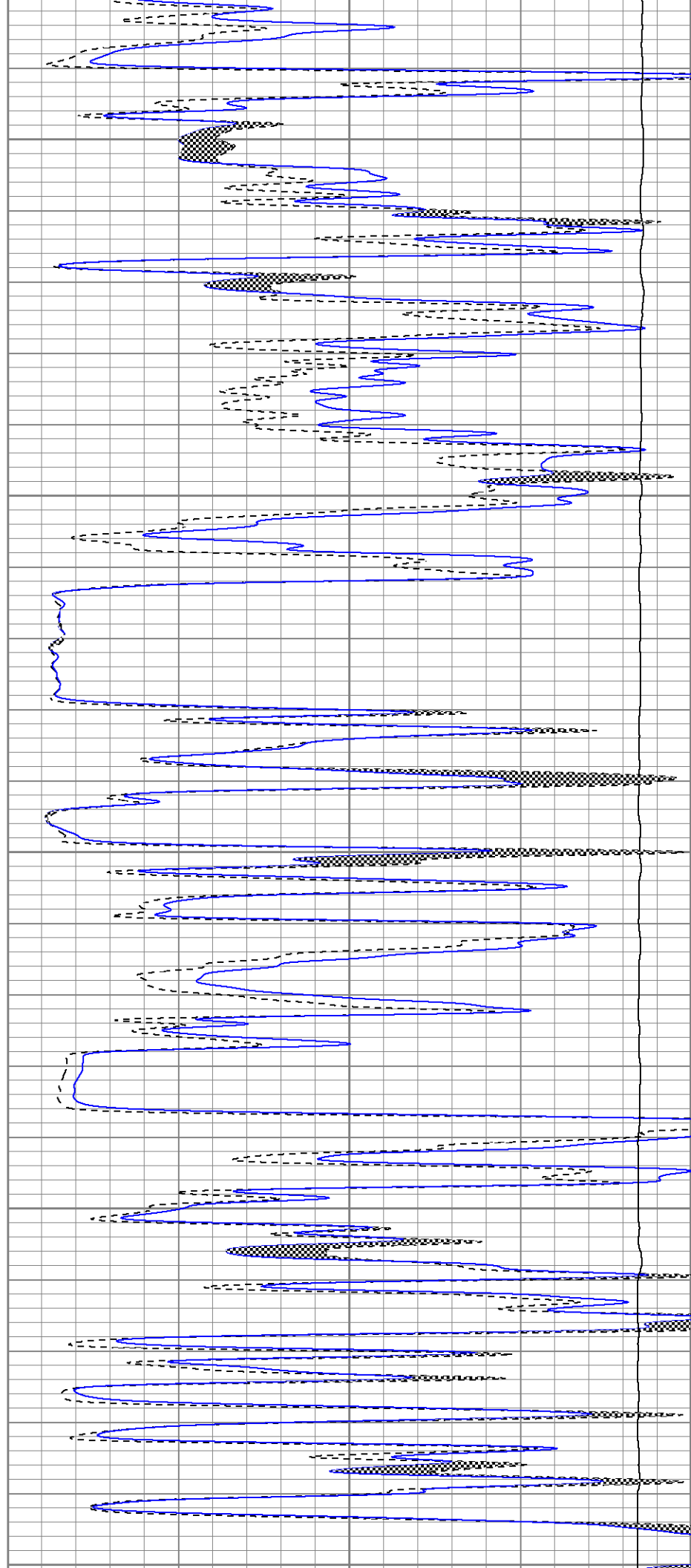
3100

3150

3200

3250

3300



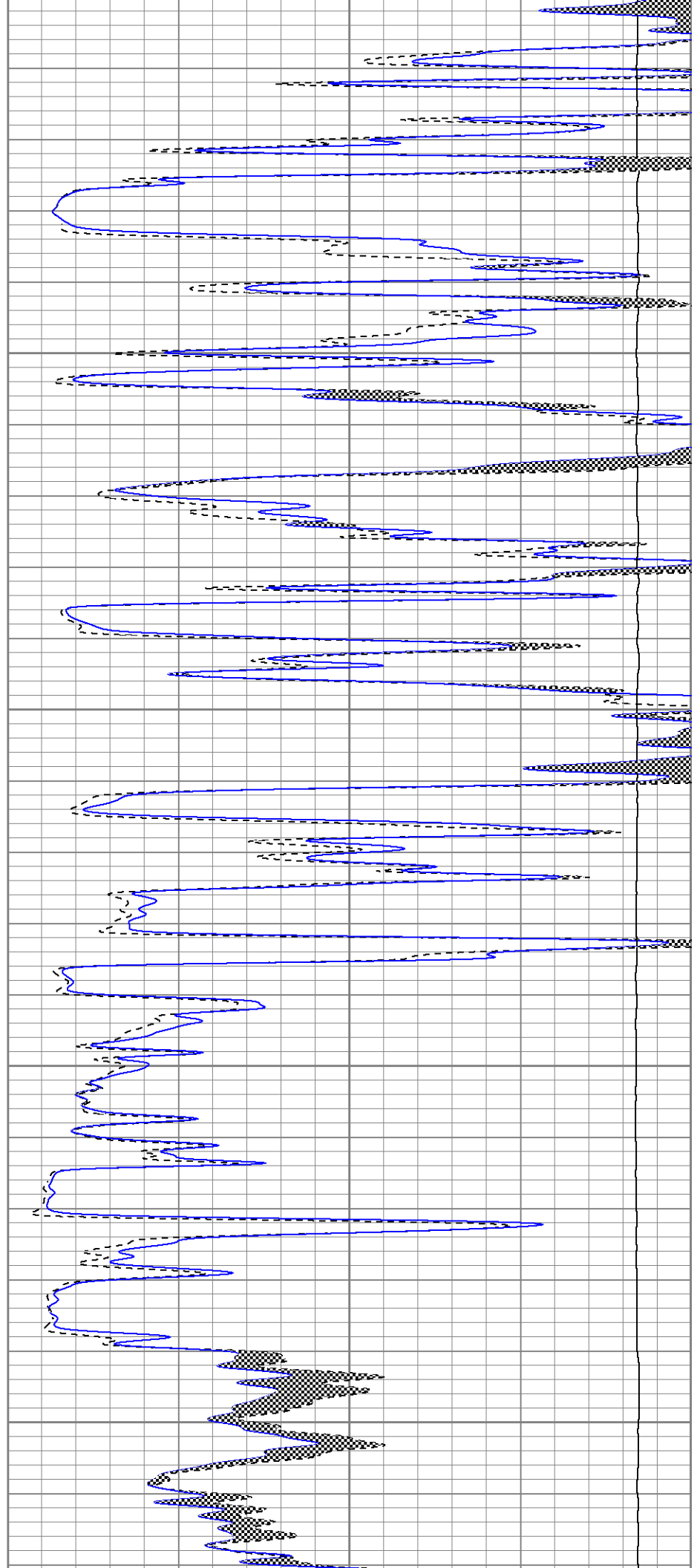
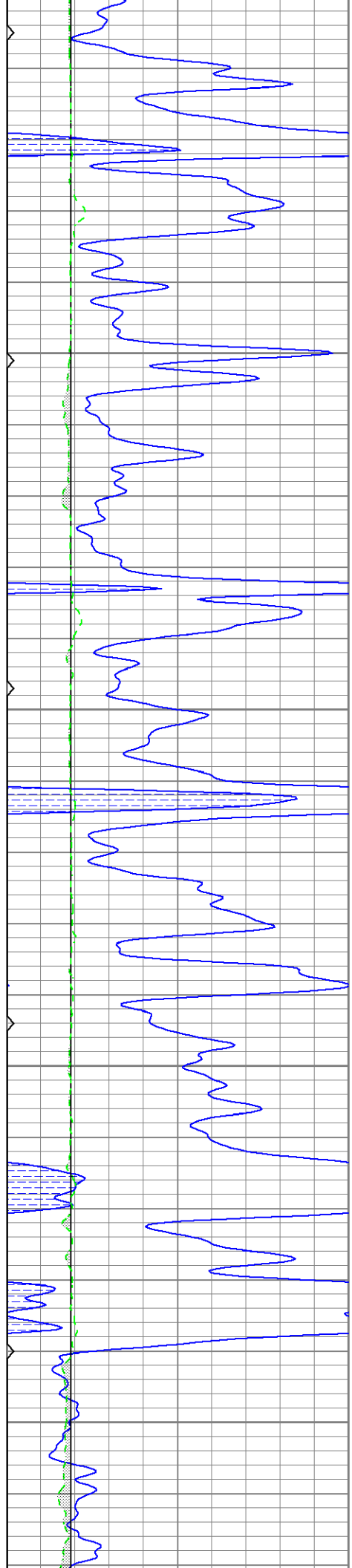
3300

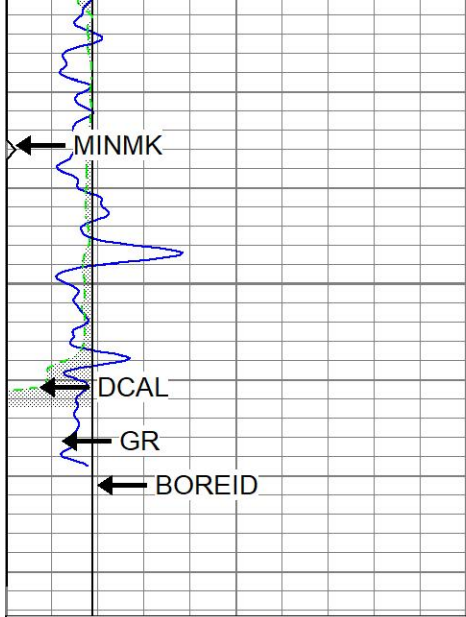
3350

3400

3450

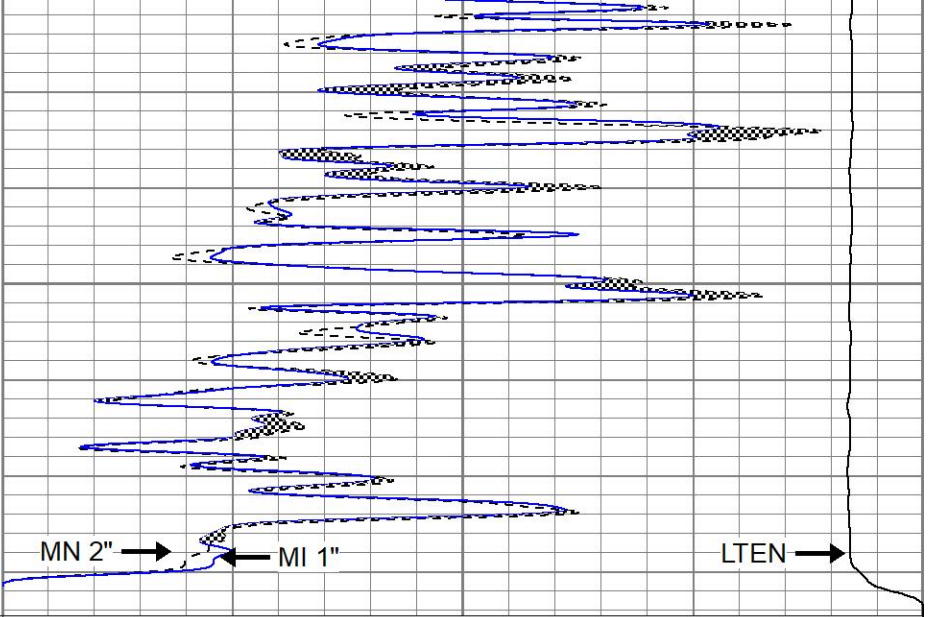
3500





3550

LTD 3580



0	GR (GAPI)	150
6	BOREID (in)	16
0	MINMK	50
6	DCAL (in)	16

0	MN 2" (Ohm-m)	20
0	MI 1" (Ohm-m)	20
10000	LTEN (lb)	0

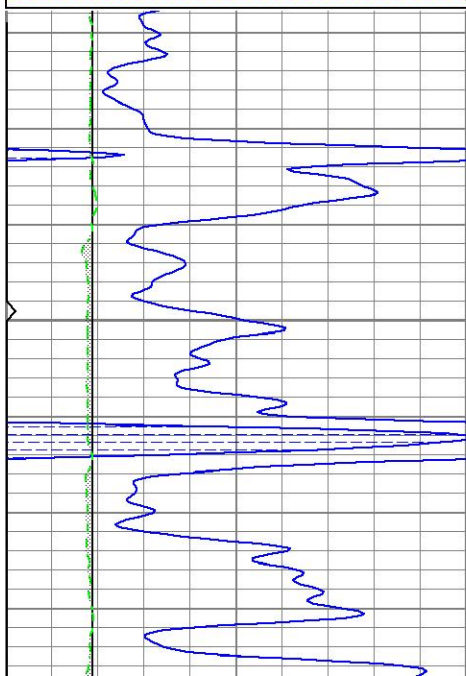


REPEAT SECTION

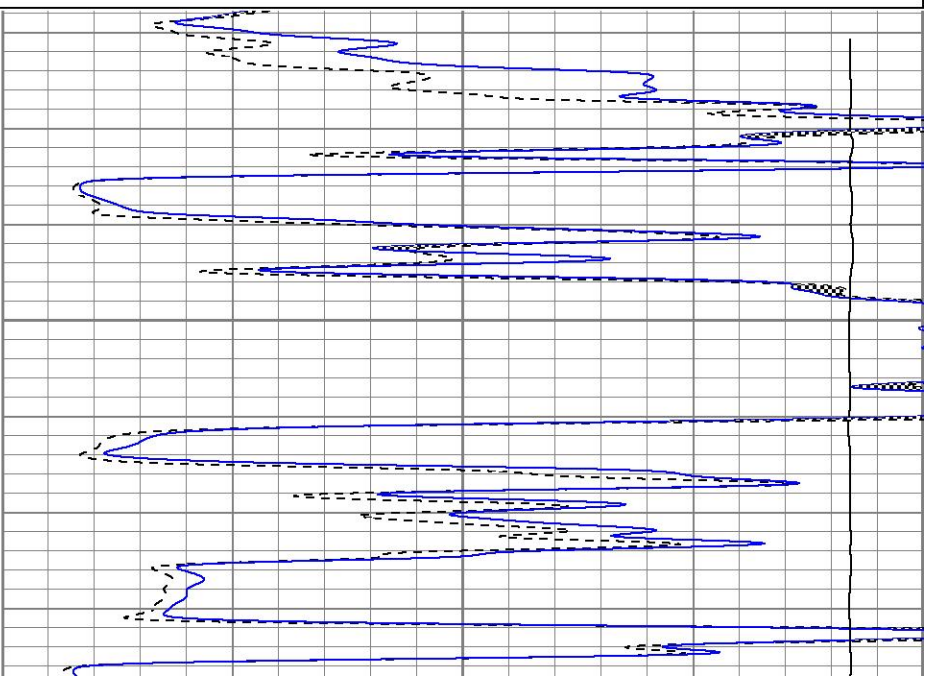
Database File perpdevine#10oh.db
 Dataset Pathname pass5.1
 Presentation Format kml
 Dataset Creation Sat Mar 09 14:35:43 2024
 Charted by Depth in Feet scaled 1:240

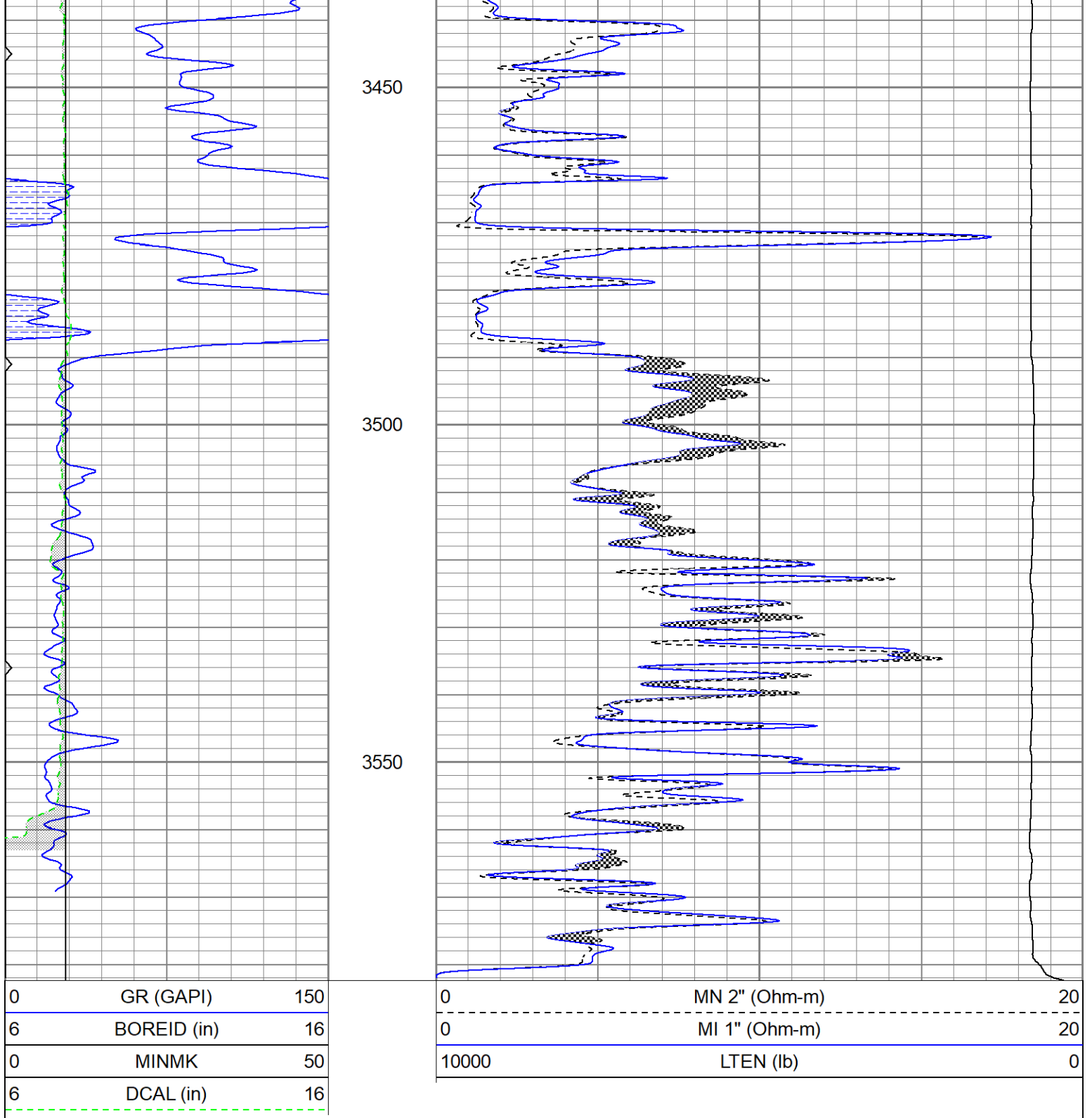
0	GR (GAPI)	150
6	BOREID (in)	16
0	MINMK	50
6	DCAL (in)	16

0	MN 2" (Ohm-m)	20
0	MI 1" (Ohm-m)	20
10000	LTEN (lb)	0



3400





Calibration Report

Database File perpdevine#10oh.db
 Dataset Pathname pass5.1
 Dataset Creation Sat Mar 09 14:35:43 2024

Microlog Calibration Report

Serial-Model: 9151-Gerhart
 Performed: Sat Mar 9 14:04:34 2024

	Readings		V	References		Results	
	Zero	Cal		Zero	Cal	m	b
Normal	0.0013	0.4814	V	0.0000	10.0000 Ohm-m	19.2273	-0.0269

Normal	0.0015	0.4814	V	0.0000	10.0000	Ohm-Ft	15.2275	-0.0205
Inverse	0.0008	0.6272	V	0.0000	10.0000	Ohm-m	15.9631	-0.0124
Caliper	0.9057	2.2211	V	8.0000	16.0000	in	6.0818	3.9916

Gamma Ray Calibration Report

Serial Number:	2001	
Tool Model:	OH	
Performed:	Sat Nov 11 18:52:32 2023	
Calibrator Value:	1.0	GAPI
Background Reading:	0.0	cps
Calibrator Reading:	1.0	cps
Sensitivity:	0.7600	GAPI/cps