

FRAC FINDER LOG



Company INDIAN OIL COMPANY, INC.
Well PEACE PIPE #1
Field UNNAMED
County BARBER **State** KANSAS

Location: API #: 15-007-24469-0000
 948' FNL & 2437' FEL
 N.W. - SW - NW - NE
 SEC 26 TWP 30S RGE 12W
Permanent Datum GROUND LEVEL Elevation 1699
Log Measured From KELLY BUSHING 12' A.G.L.
Drilling Measured From KELLY BUSHING

Company INDIAN OIL COMPANY, INC.
Well PEACE PIPE #1
Field UNNAMED
County BARBER
State KANSAS

Other Services
 CDL/CNL/PE
 DILMEL/SON
Elevation
 K.B. 1711
 D.F. 1709
 G.L. 1699

Date	5/7/23	
Run Number	ONE	
Depth Driller	4810	
Depth Logger	4810	
Bottom Logged Interval	4786	
Top Log Interval	2500	
Casing Driller	8 5/8" @ 225	
Casing Logger	225	
Bit Size	7 7/8	
Type Fluid in Hole	CHEMICAL MUD	CHLORIDES 8,000 PPM
Density / Viscosity	9.4+/.53	
pH / Fluid Loss	10.5/8.8	
Source of Sample	FLOWLINE	
Rm @ Meas. Temp	.700 @ 78F	
Rmf @ Meas. Temp	.525 @ 78F	
Rmc @ Meas. Temp	.840 @ 78F	
Source of Rmf / Rmc	MEASUREMENT	
Rm @ BHT	.444 @ 123F	
Time Circulation Stopped	2 HOURS	
Time Logger on Bottom	4:00 P.M.	
Maximum Recorded Temperature	123F	
Equipment Number	3802	
Location	HAYS, KANSAS	
Recorded By	COLE ROBBEN	
Witnessed By	AARON YOUNG	

<<< Fold Here >>>

All interpretations are opinions based on inferences from electrical or other measurements and we cannot and do not guarantee the accuracy or correctness of any interpretation, and we shall not, except in the case of gross or willful negligence on our part, be liable or responsible for any loss, costs, damages, or expenses incurred or sustained by anyone resulting from any interpretation made by any of our officers, agents or employees. These interpretations are also subject to our general terms and conditions set out in our current Price Schedule.

Comments

THANK YOU FOR USING ELI WIRELINE SERVICES, HAYS, KS. (785) 628-6395

DIRECTIONS:

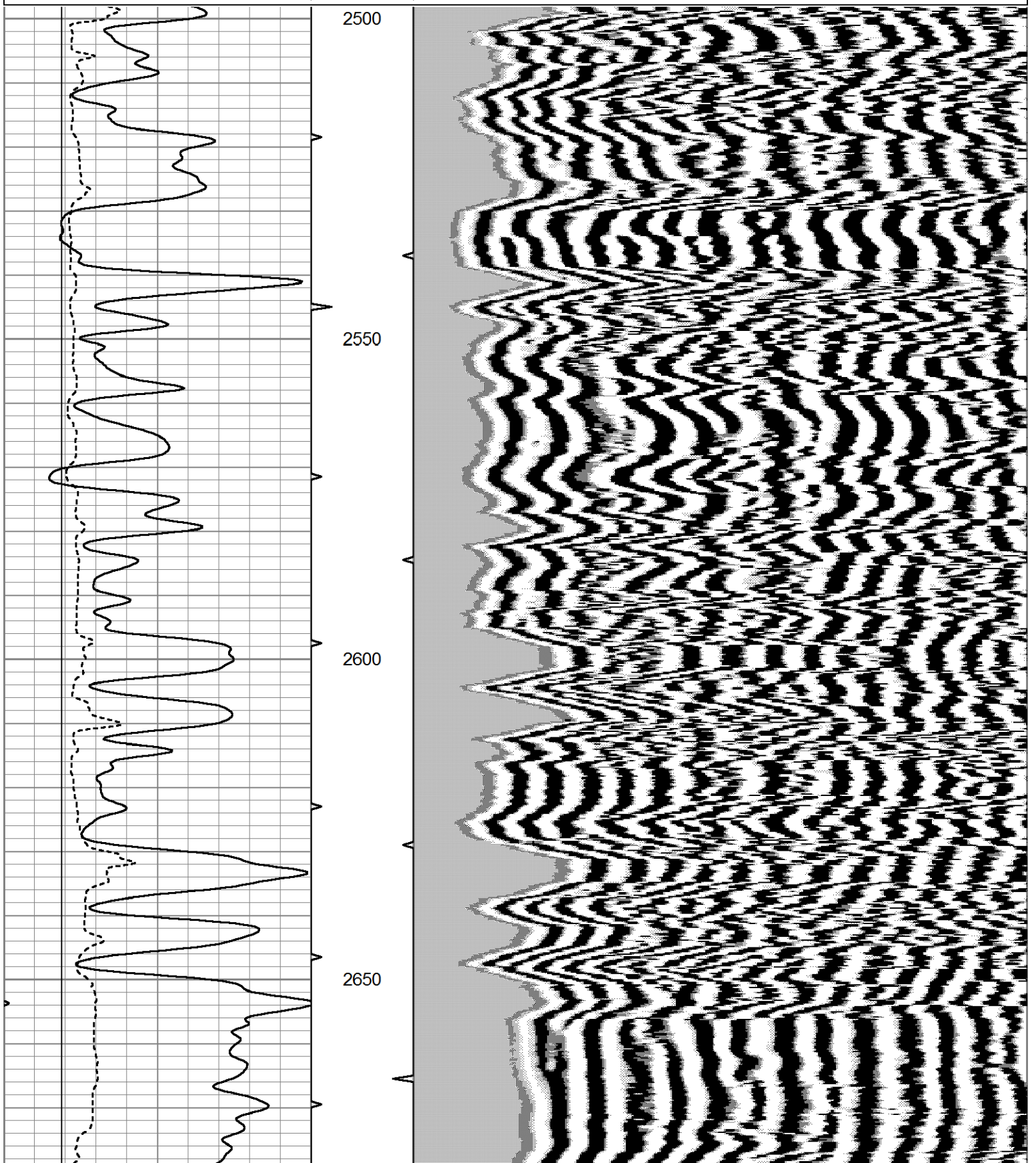
MEDICINE LODGE NORTH ON HIGHWAY 281 TO NE RESORT ROAD, NORTH 2 MILES, WEST ON ARROWHEAD ROAD 1 MILE, EAST INTO

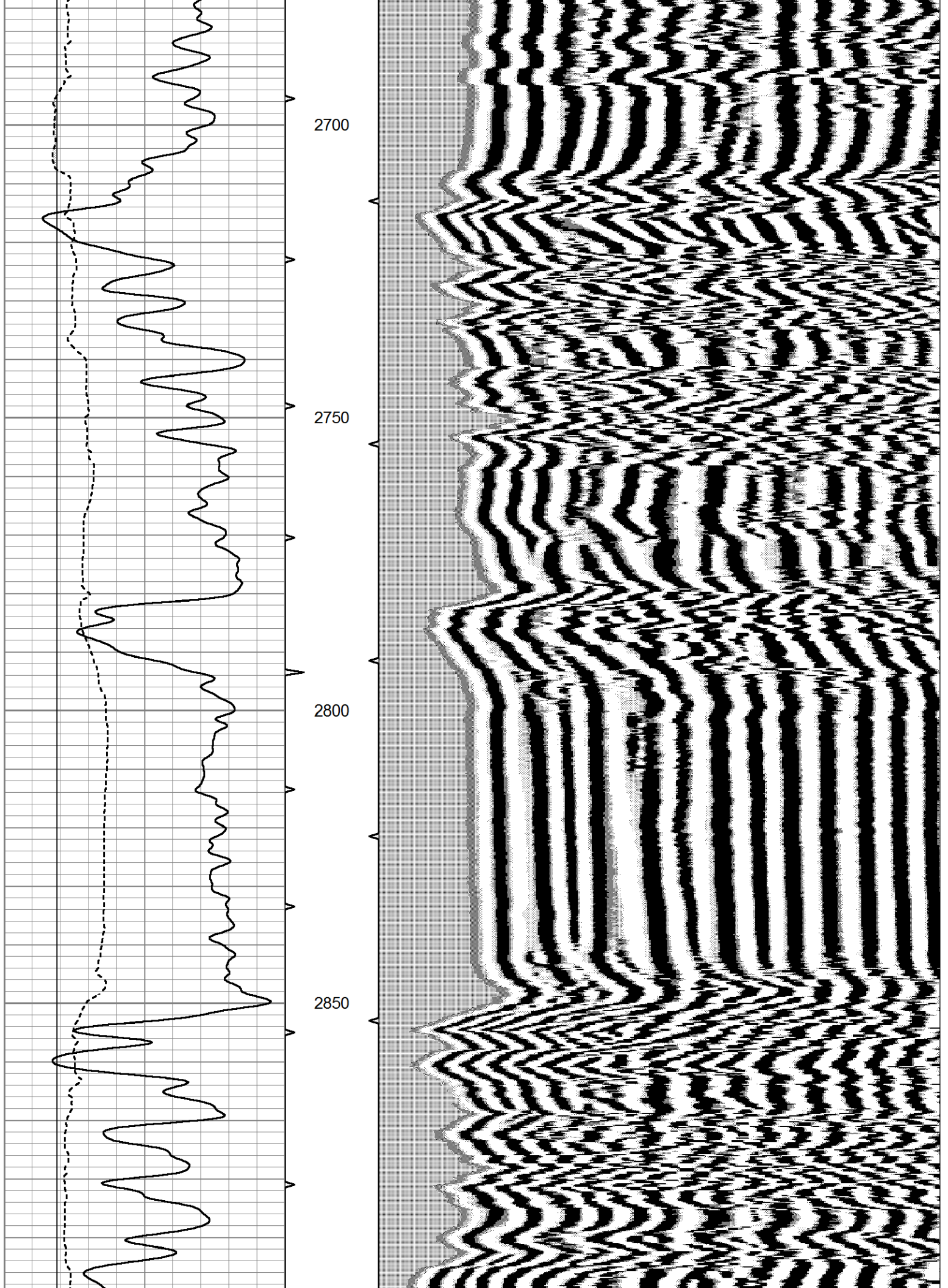


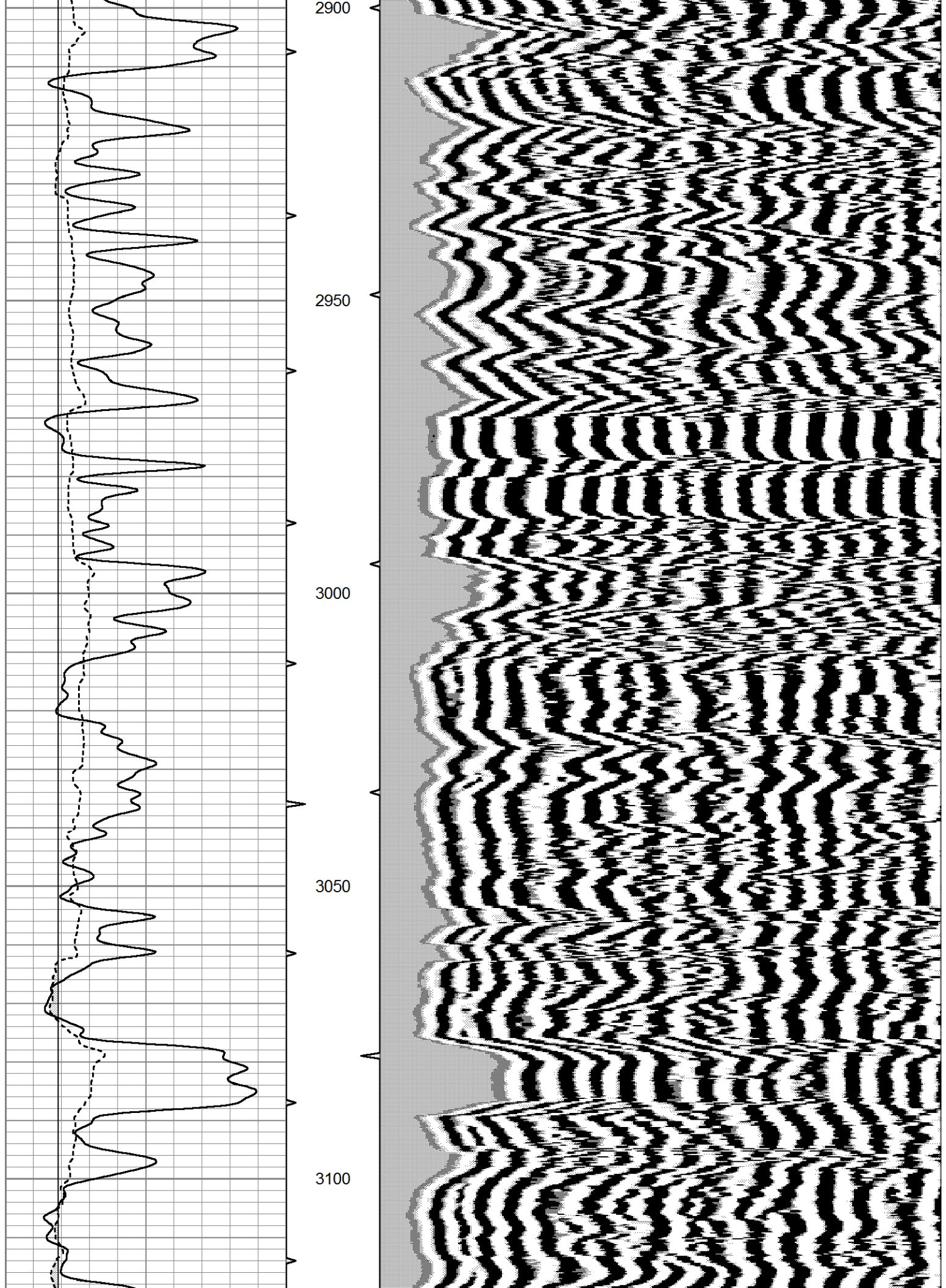
MAIN SECTION

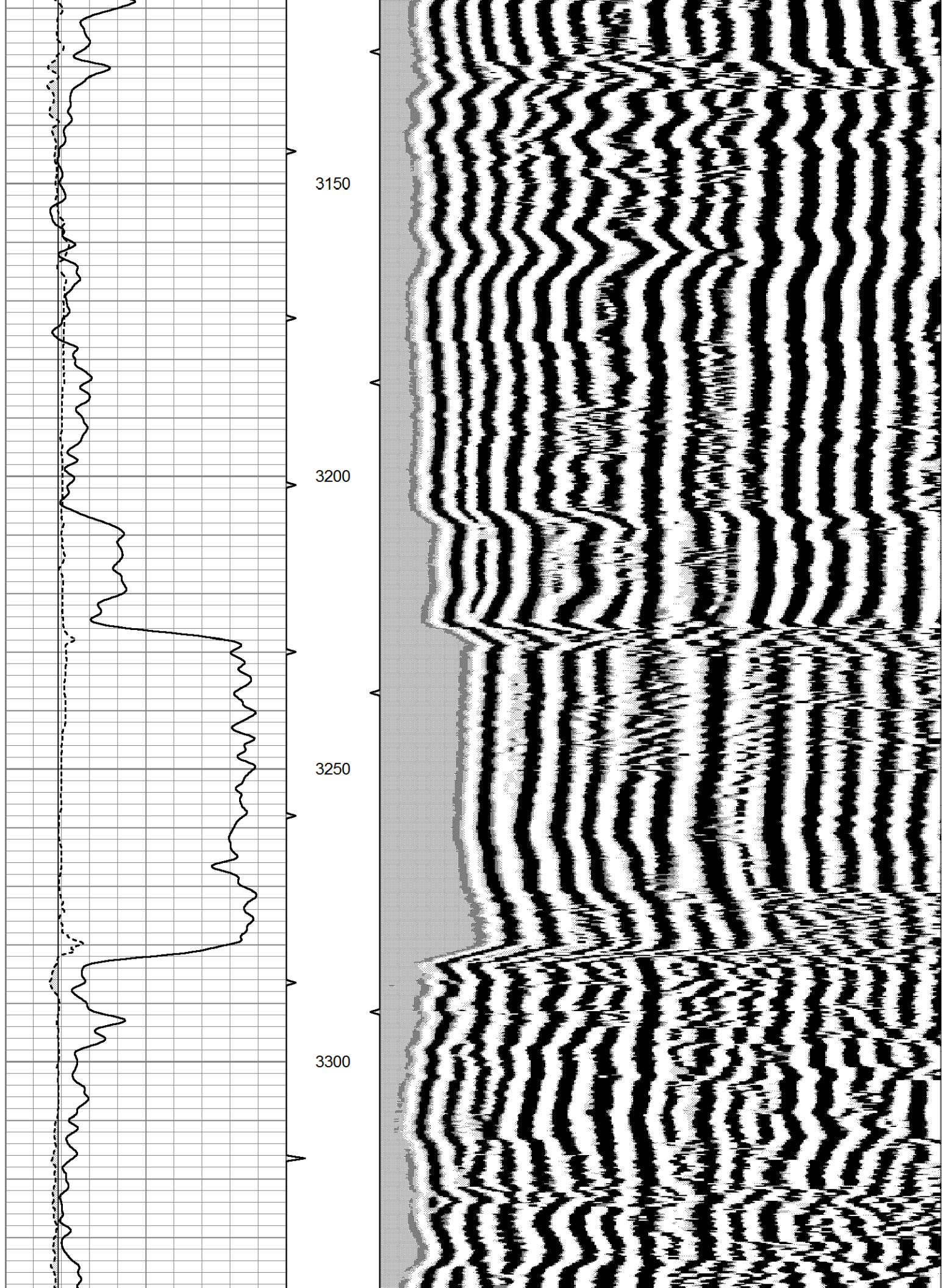
Database File 7776pe.db
 Dataset Pathname pass10D
 Presentation Format frac
 Dataset Creation Sun May 07 21:37:54 2023
 Charted by Depth in Feet scaled 1:240

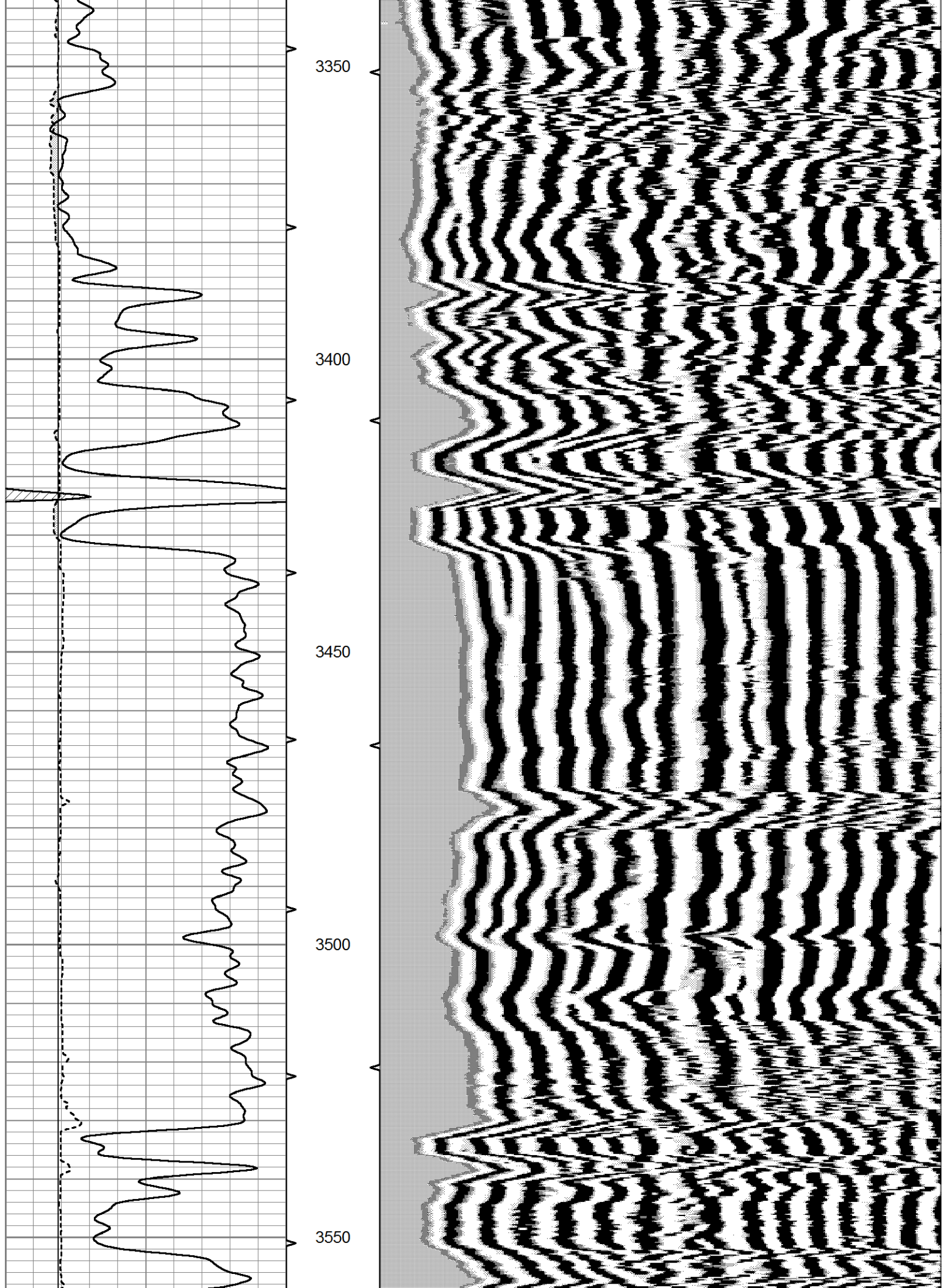
0	GR (GAPI)	150	ABHV	200	WWF1 (usec)	1200
6	BOREID (in)	16	10 (ft3)	0		
6	CALIPER (in)	16	TBHV			
-----			0 (ft3)	10		

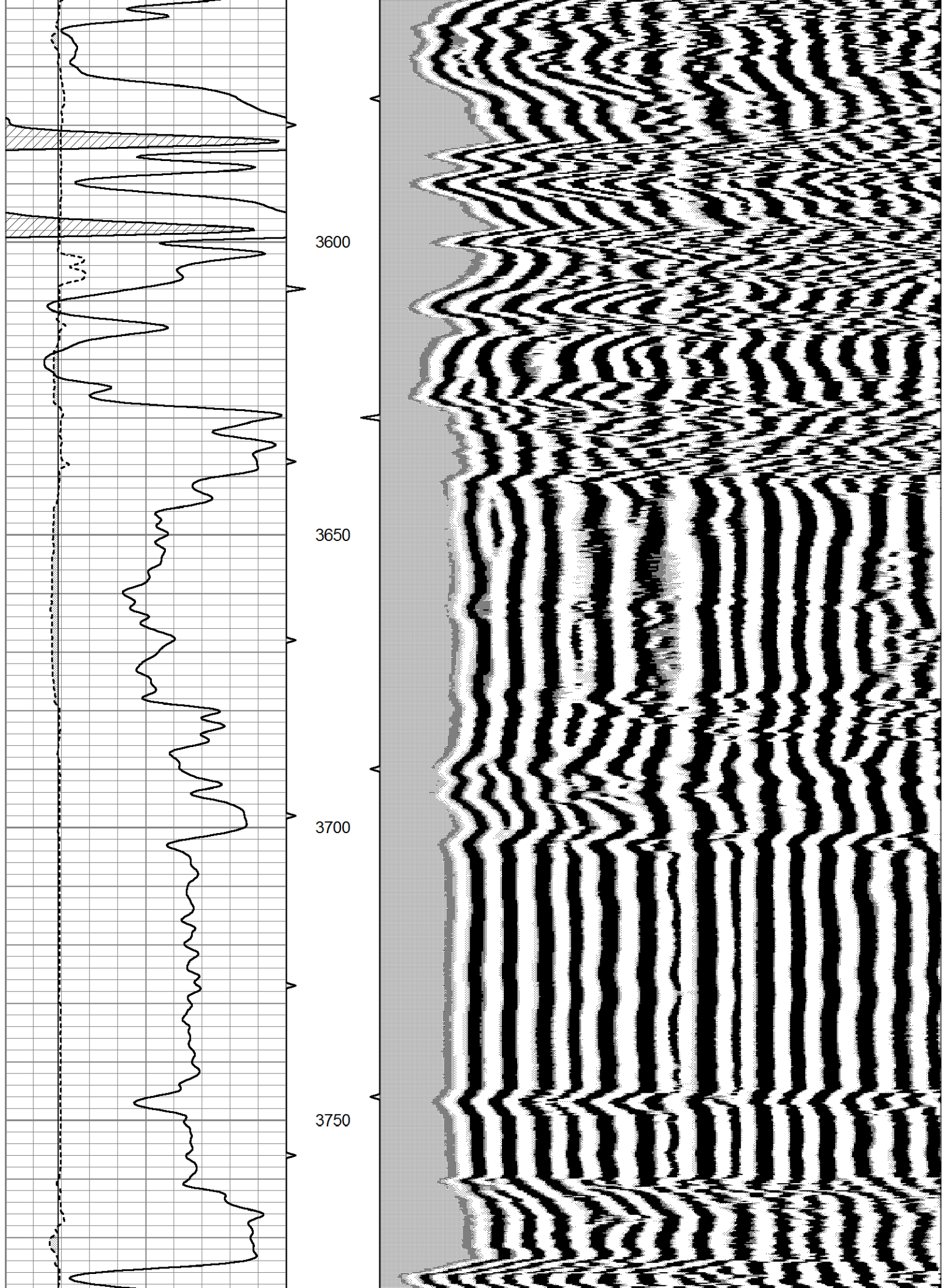


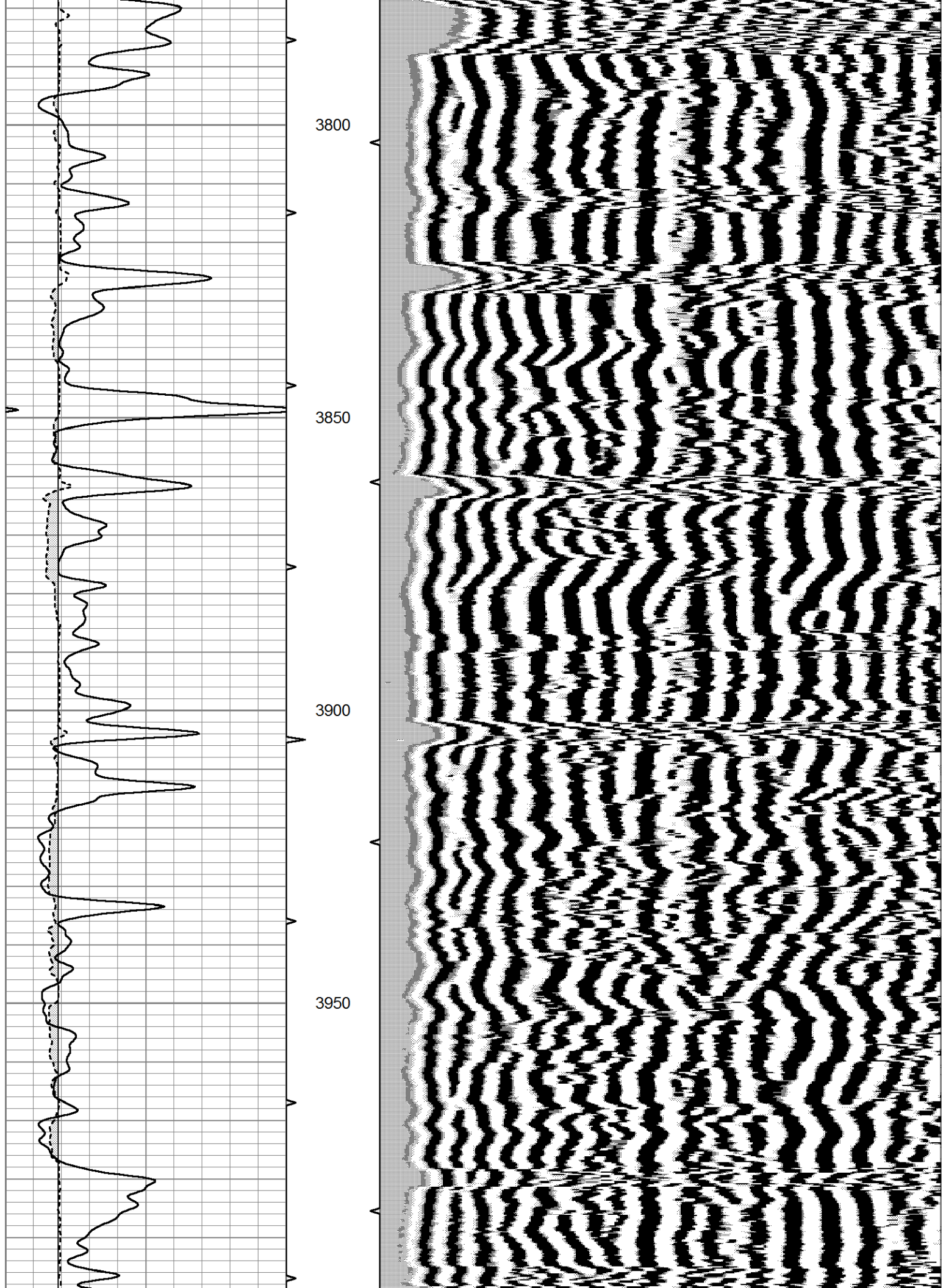


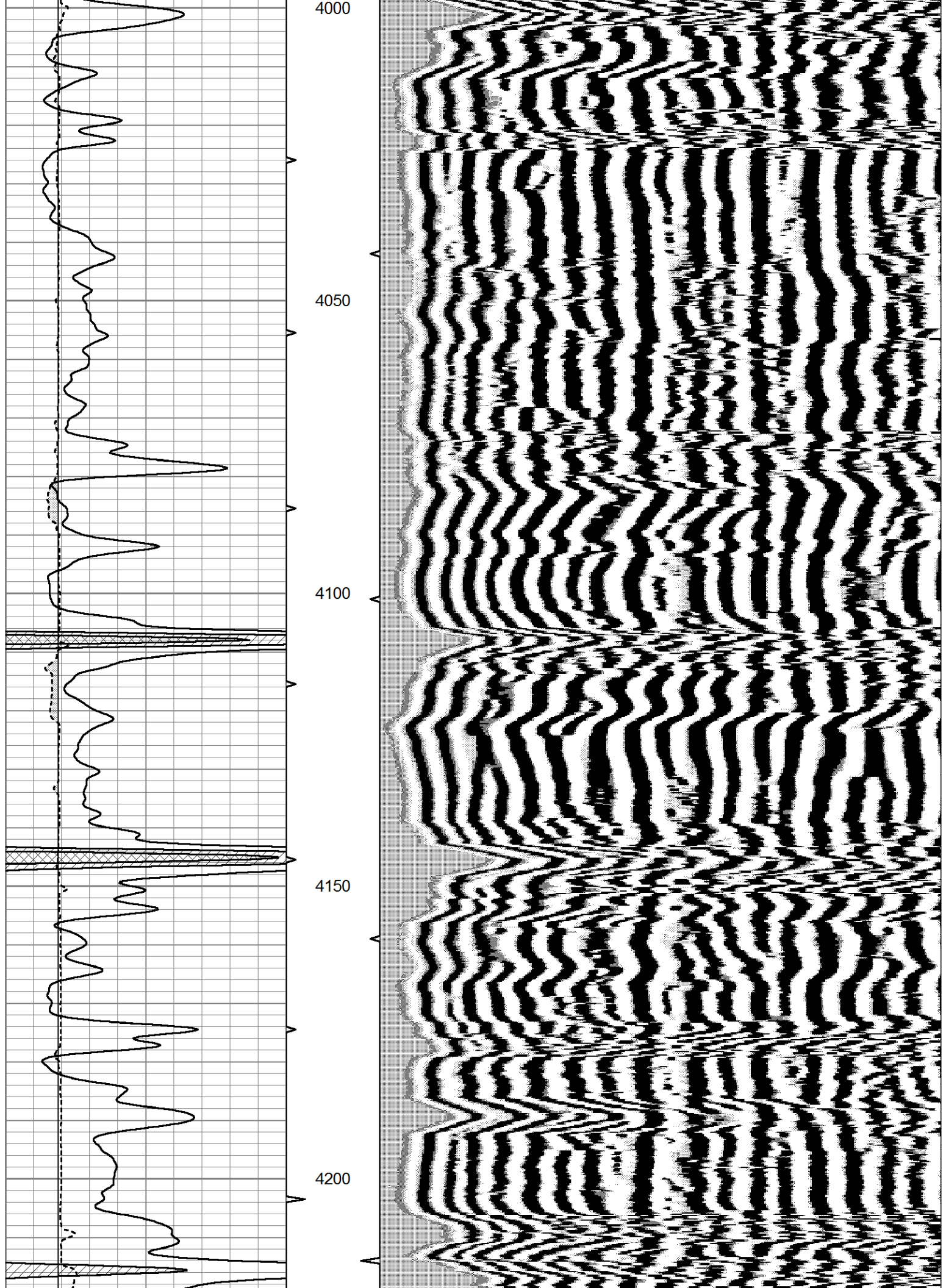


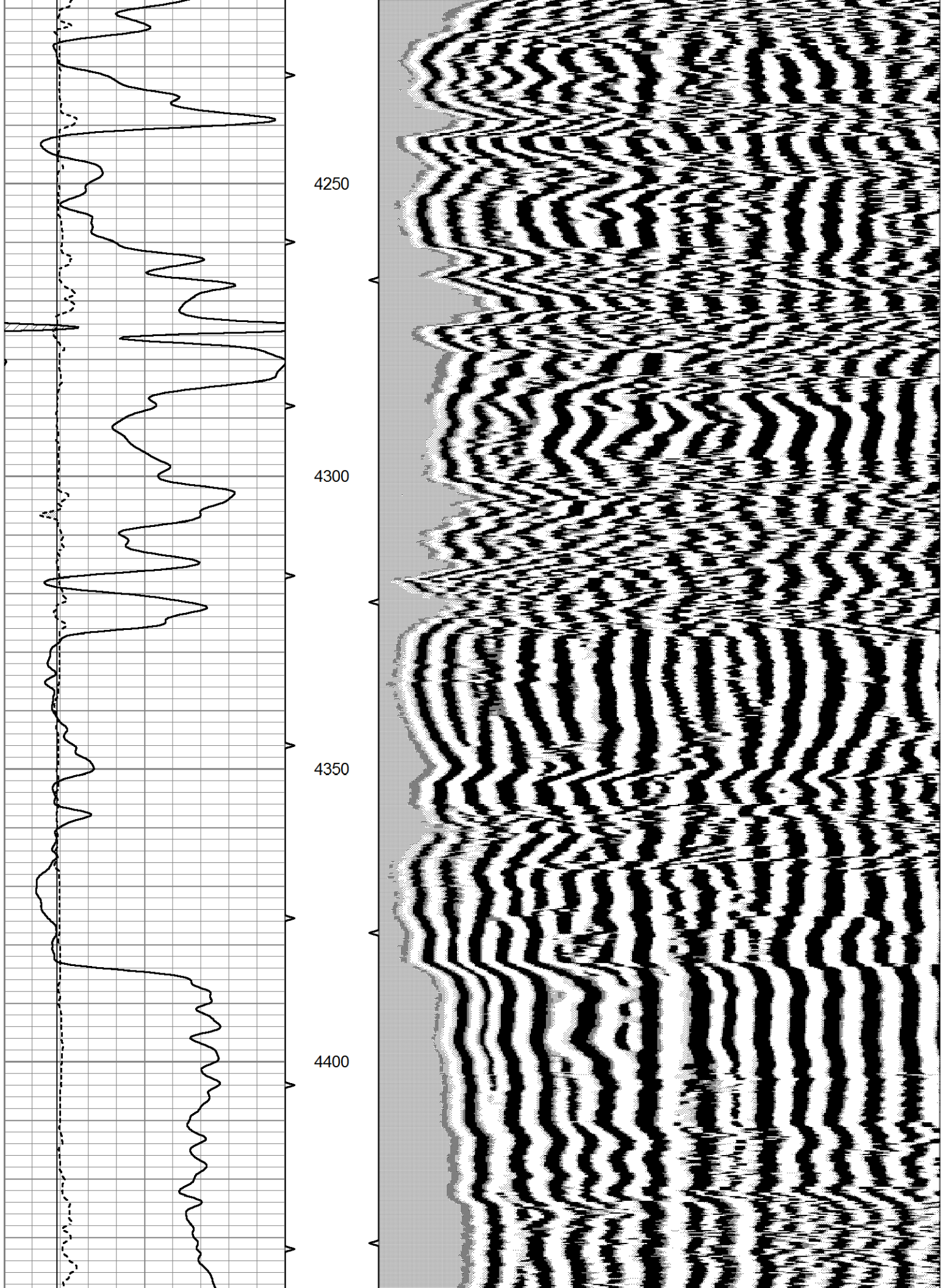


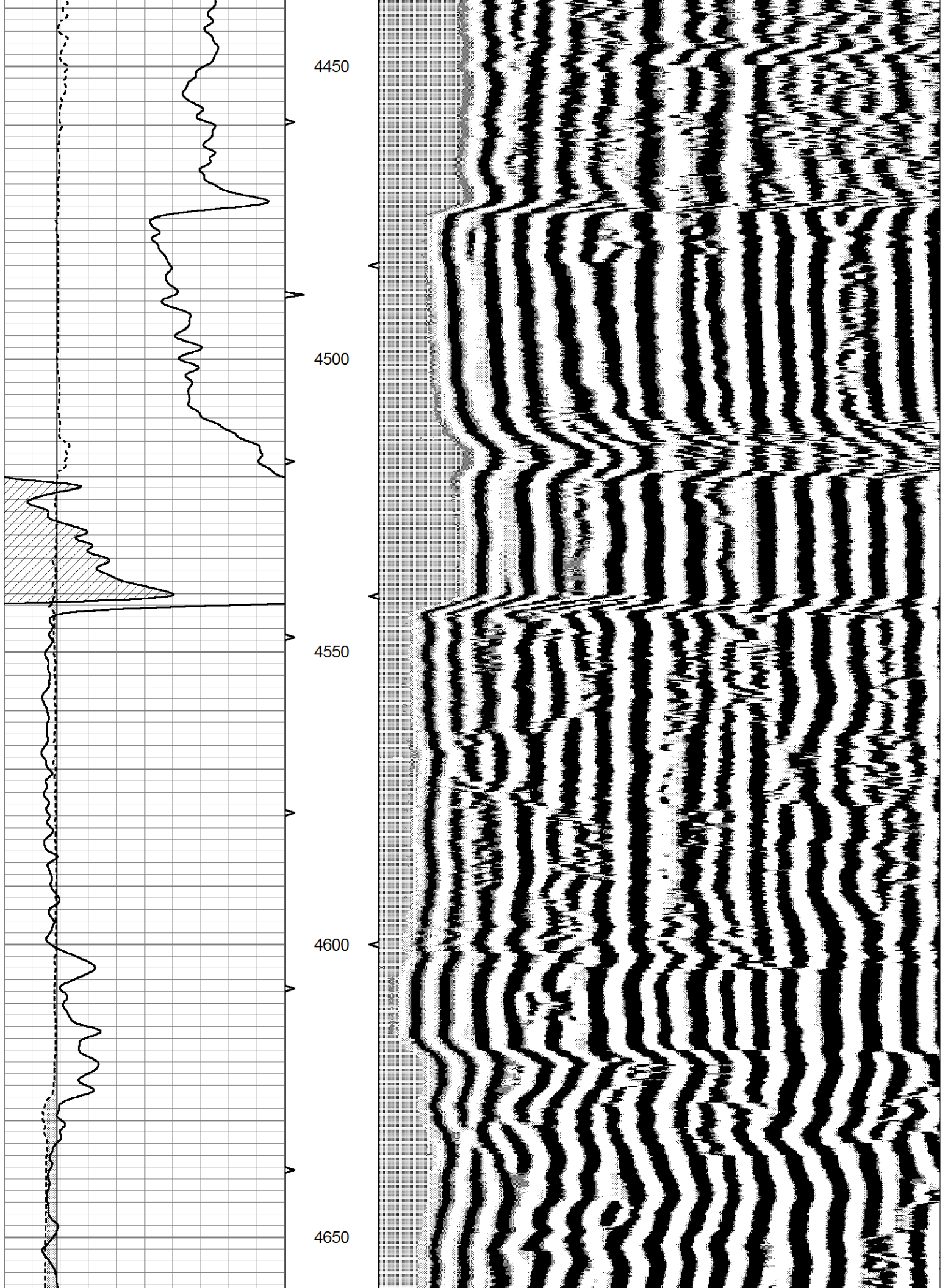


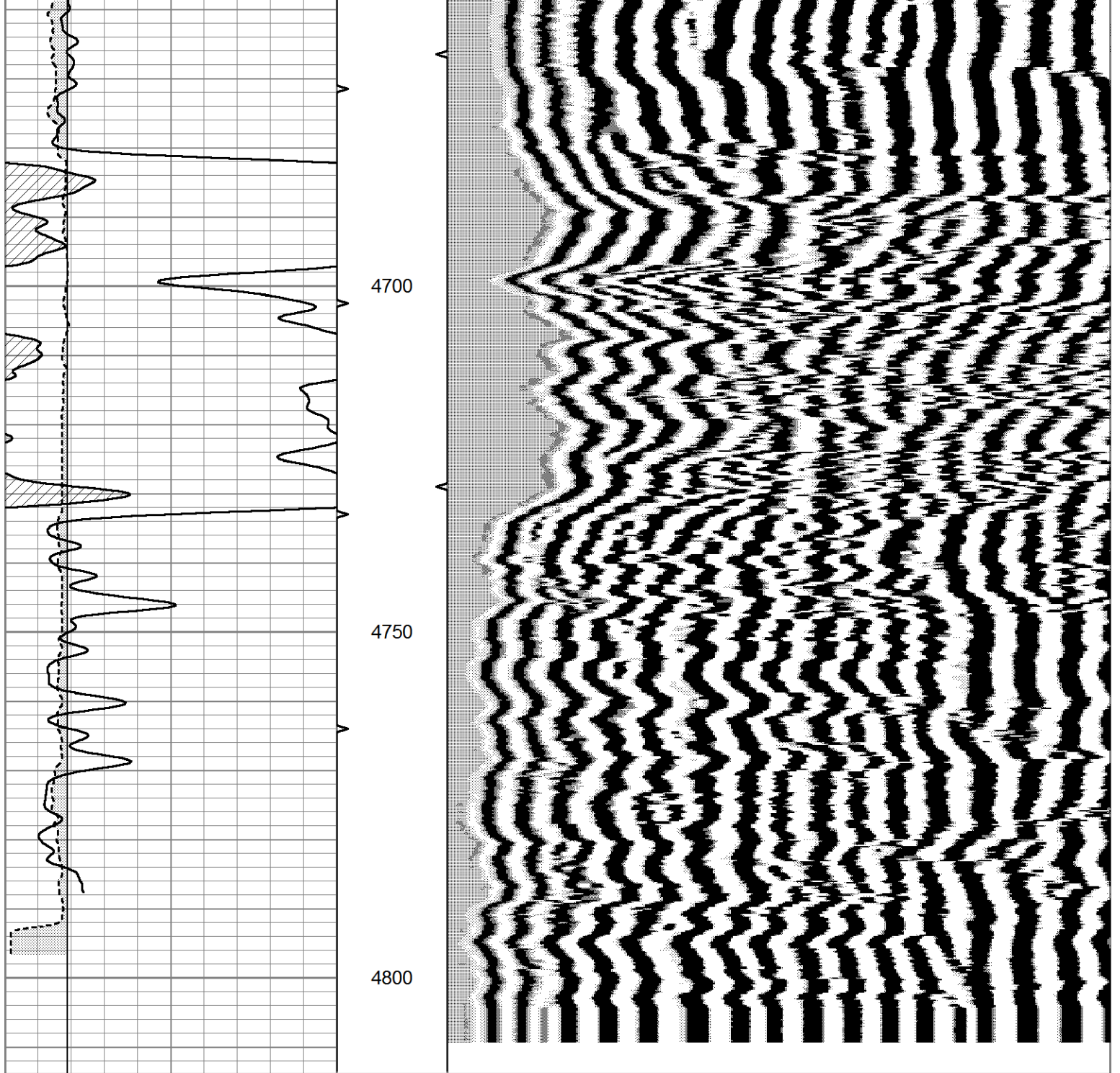












0	GR (GAPI)	150	ABHV	200	WVF1 (usec)	1200
6	BOREID (in)	16	10 (ft3)	0		
6	CALIPER (in)	16	TBHV			
			0 (ft3)	10		