

SONIC LOG



Company INDIAN OIL COMPANY, INC.
Well PEACE PIPE #1
Field UNNAMED
County BARBER **State** KANSAS

Location: API #: 15-007-24469-0000
 948' FNL & 2437' FEL
 N.W. - SW - NW - NE
 SEC 26 TWP 30S RGE 12W
Permanent Datum GROUND LEVEL Elevation 1699
Log Measured From KELLY BUSHING 12' A.G.L.
Drilling Measured From KELLY BUSHING
Other Services CDL/CNL/PE DIL/MEL
Elevation K.B. 1711
 D.F. 1709
 G.L. 1699

Date	5/7/23		
Run Number	TWO		
Depth Driller	4810		
Depth Logger	4810		
Bottom Logged Interval	4802		
Top Log Interval	200		
Casing Driller	8 5/8" @ 225		
Casing Logger	225		
Bit Size	7 7/8		
Type Fluid in Hole	CHEMICAL MUD	CHLORIDES 8,000 PPM	
Density / Viscosity	9.4+/53		
pH / Fluid Loss	10.5/8.8		
Source of Sample	FLOWLINE		
Rm @ Meas. Temp	.700 @ 78F		
Rmf @ Meas. Temp	.525 @ 78F		
Rmc @ Meas. Temp	.840 @ 78F		
Source of Rmf / Rmc	MEASUREMENT		
Rm @ BHT	.444 @ 123F		
Time Circulation Stopped	4 HOURS		
Time Logger on Bottom	6:00 P.M.		
Maximum Recorded Temperature	123F		
Equipment Number	3802		
Location	HAYS, KANSAS		
Recorded By	COLE ROBBEN		
Witnessed By	AARON YOUNG		

<<< Fold Here >>>

All interpretations are opinions based on inferences from electrical or other measurements and we cannot and do not guarantee the accuracy or correctness of any interpretation, and we shall not, except in the case of gross or willful negligence on our part, be liable or responsible for any loss, costs, damages, or expenses incurred or sustained by anyone resulting from any interpretation made by any of our officers, agents or employees. These interpretations are also subject to our general terms and conditions set out in our current Price Schedule.

Comments

THANK YOU FOR USING ELI WIRELINE SERVICES, HAYS, KS. (785) 628-6395

DIRECTIONS:

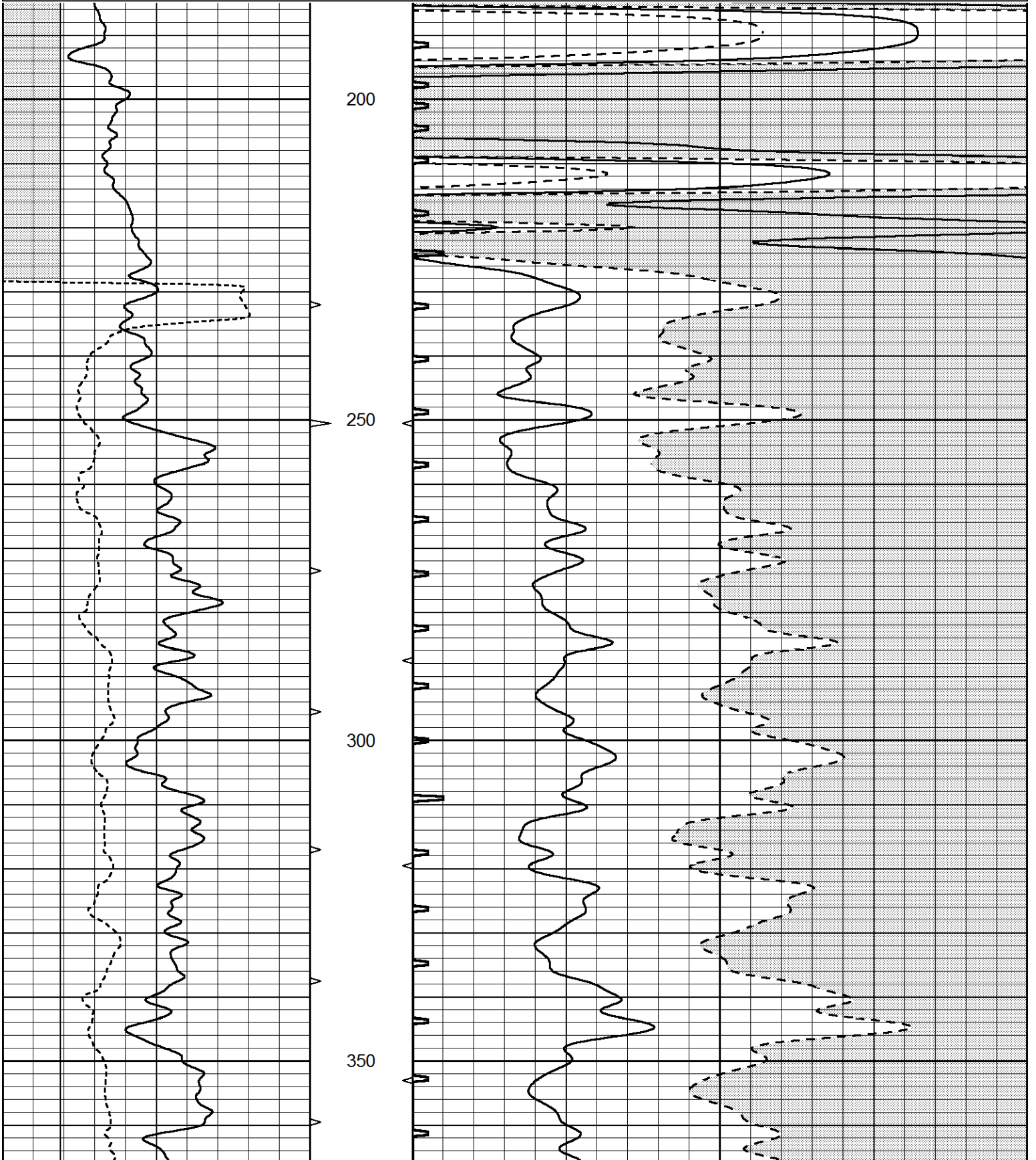
MEDICINE LODGE NORTH ON HIGHWAY 281 TO NE RESORT ROAD, NORTH 2 MILES, WEST ON ARROWHEAD ROAD 1 MILE, EAST INTO

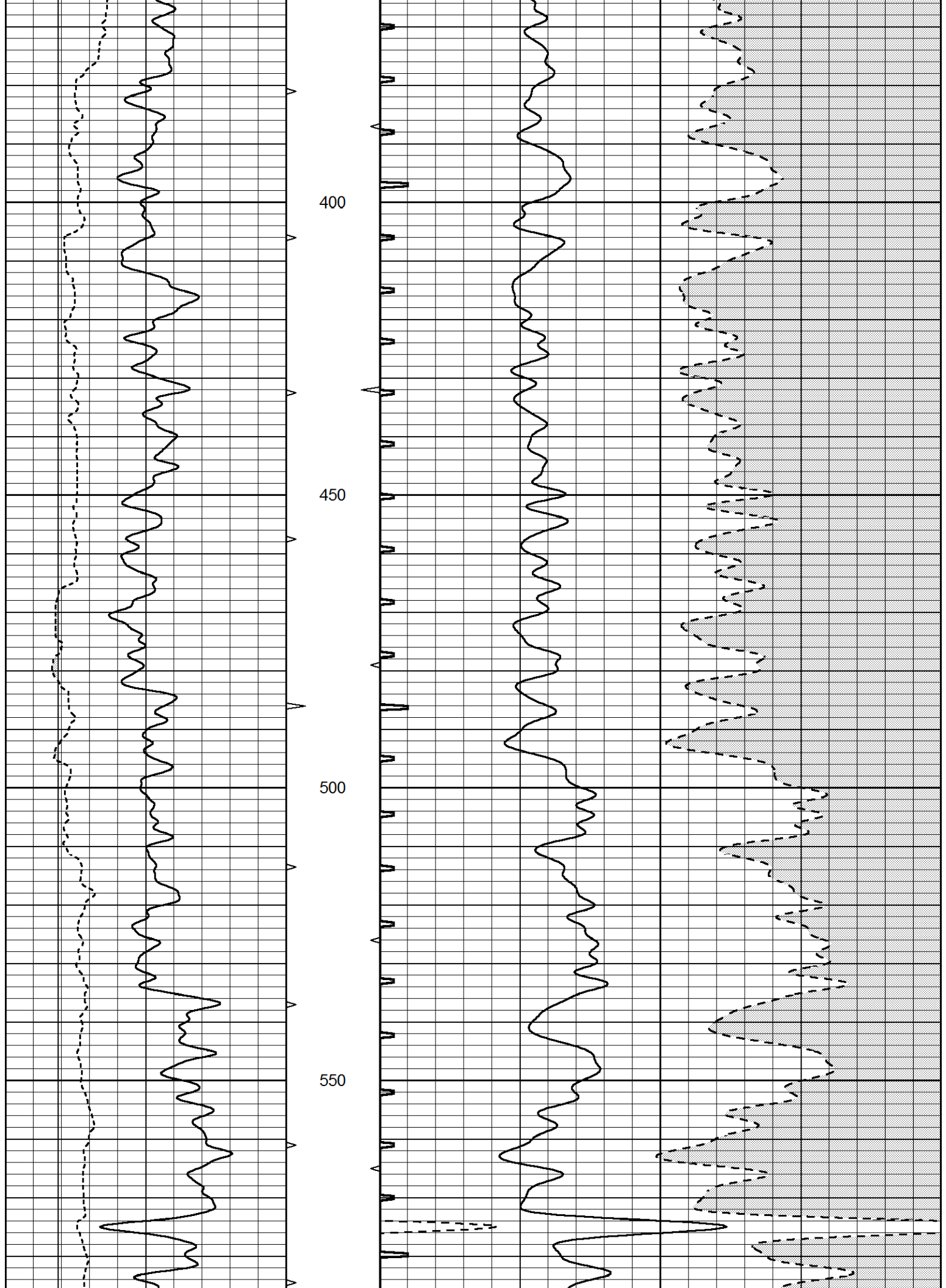


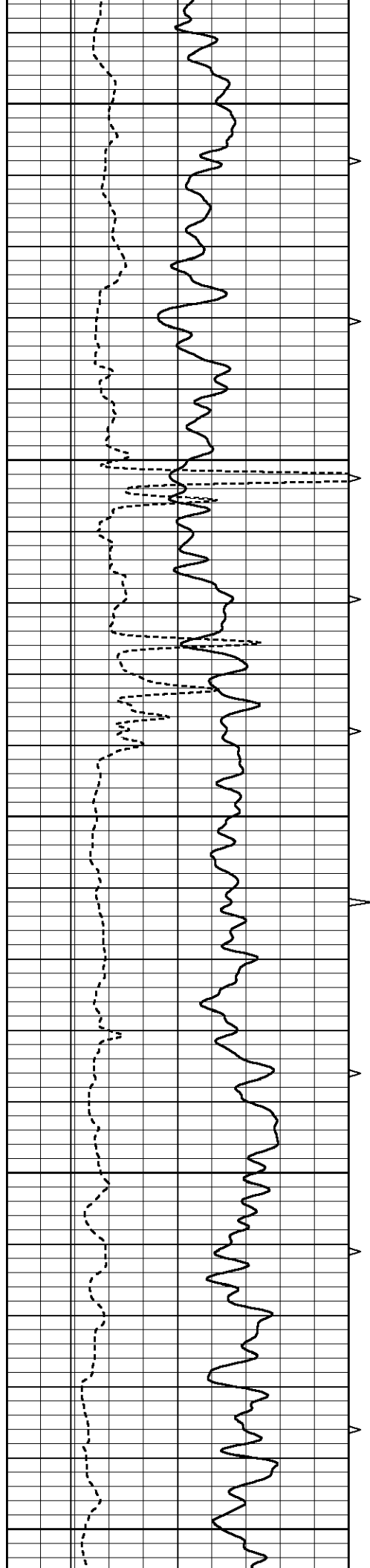
MAIN SECTION

Database File 7776pe.db
 Dataset Pathname pass10.3
 Presentation Format _slt
 Dataset Creation Sun May 07 22:02:09 2023
 Charted by Depth in Feet scaled 1:240

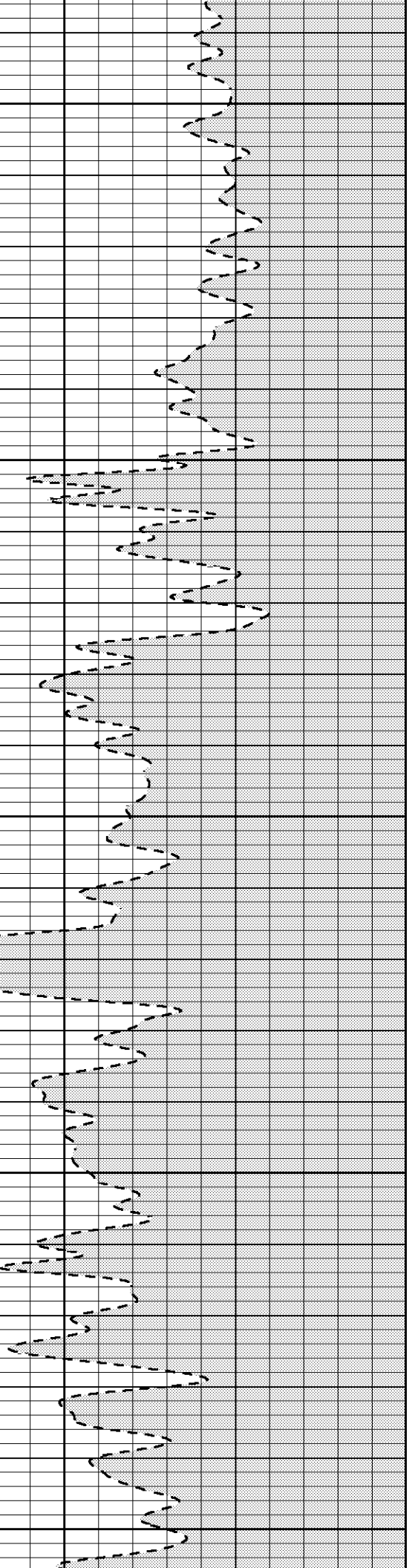
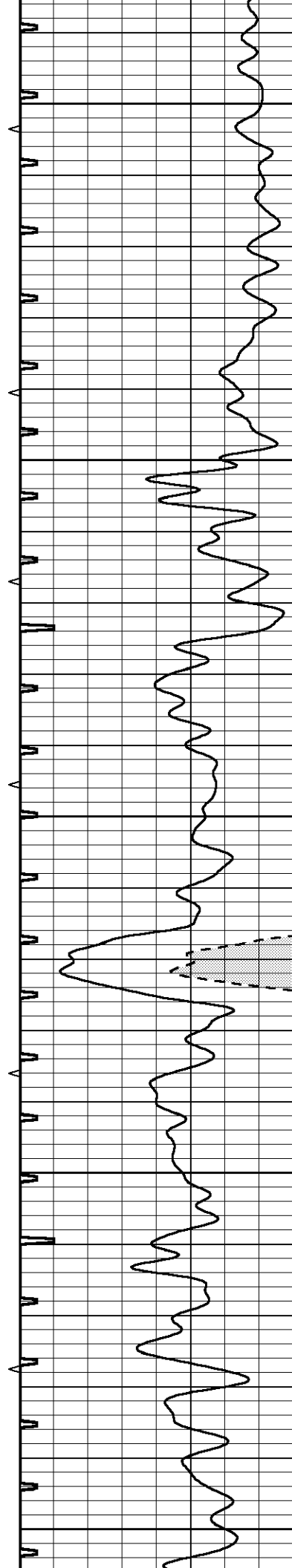
0	GAMMA RAY (GAPI)	150	ABHV	140	DELTA TIME (usec/ft)	40	
6	CALIPER (in)	16	10 (ft3)	0	30	SONIC POROSITY (pu)	-10
			TBHV	0	ITT (msec)	20	
			0 (ft3)	10			

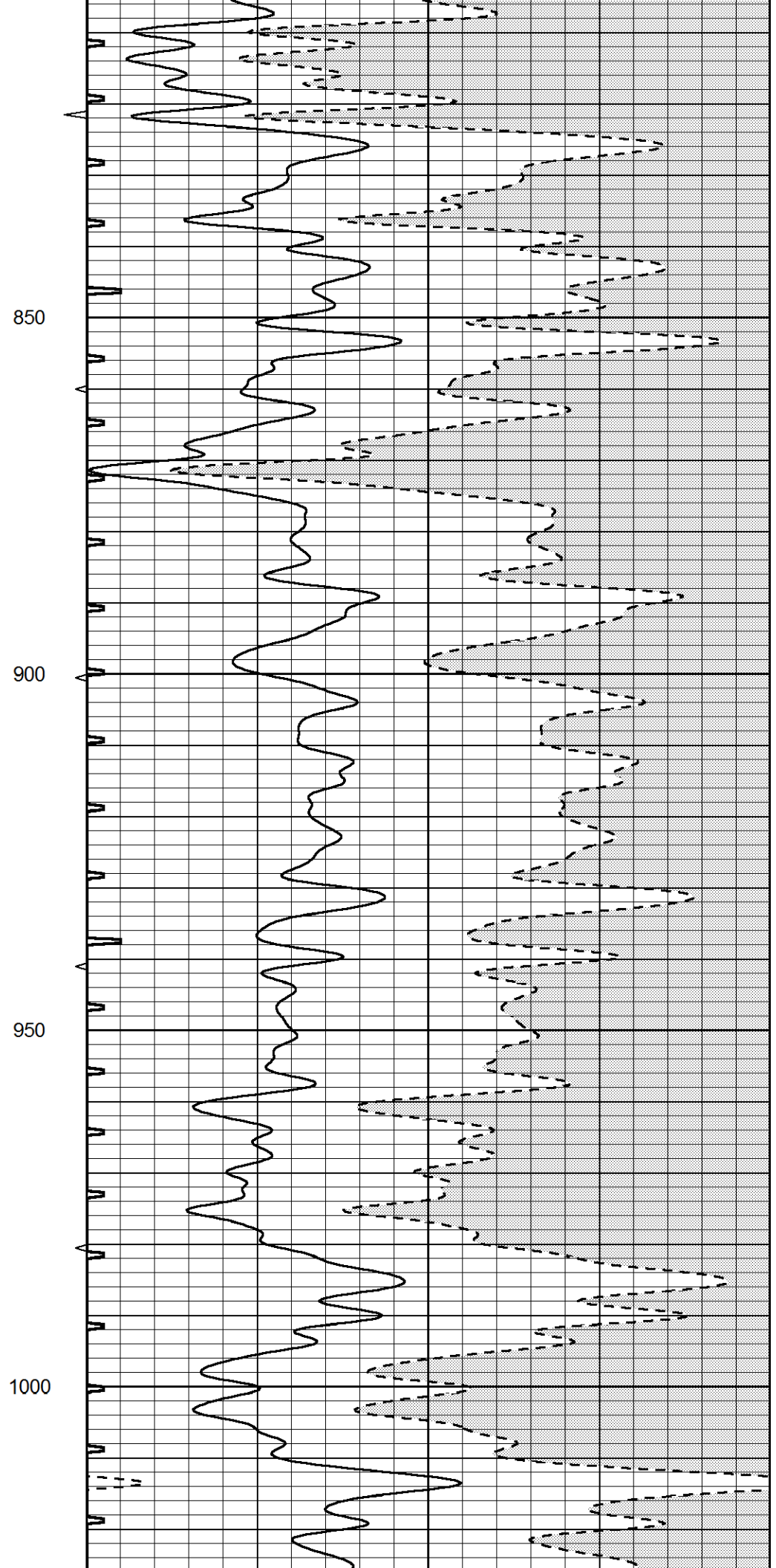
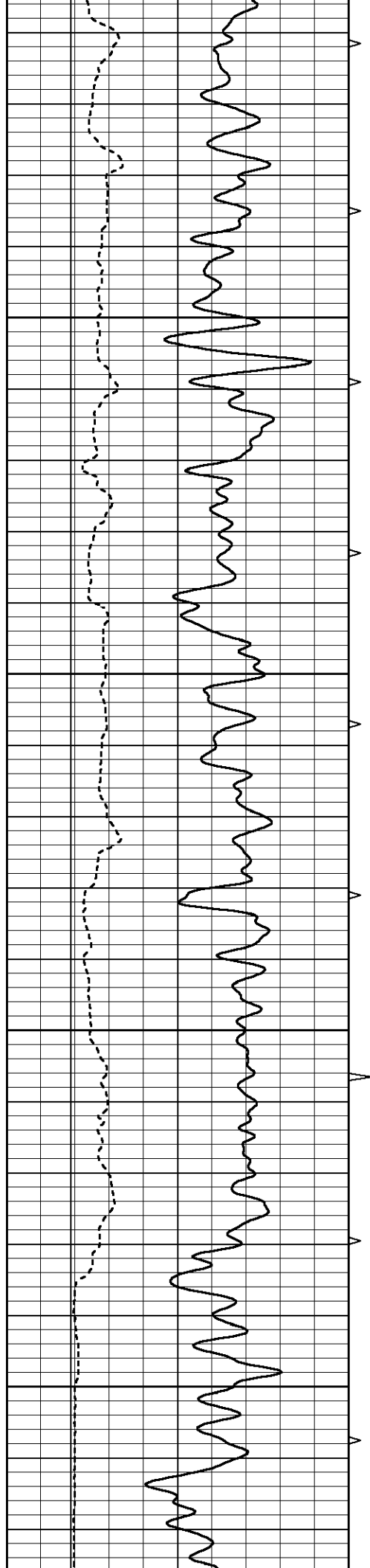


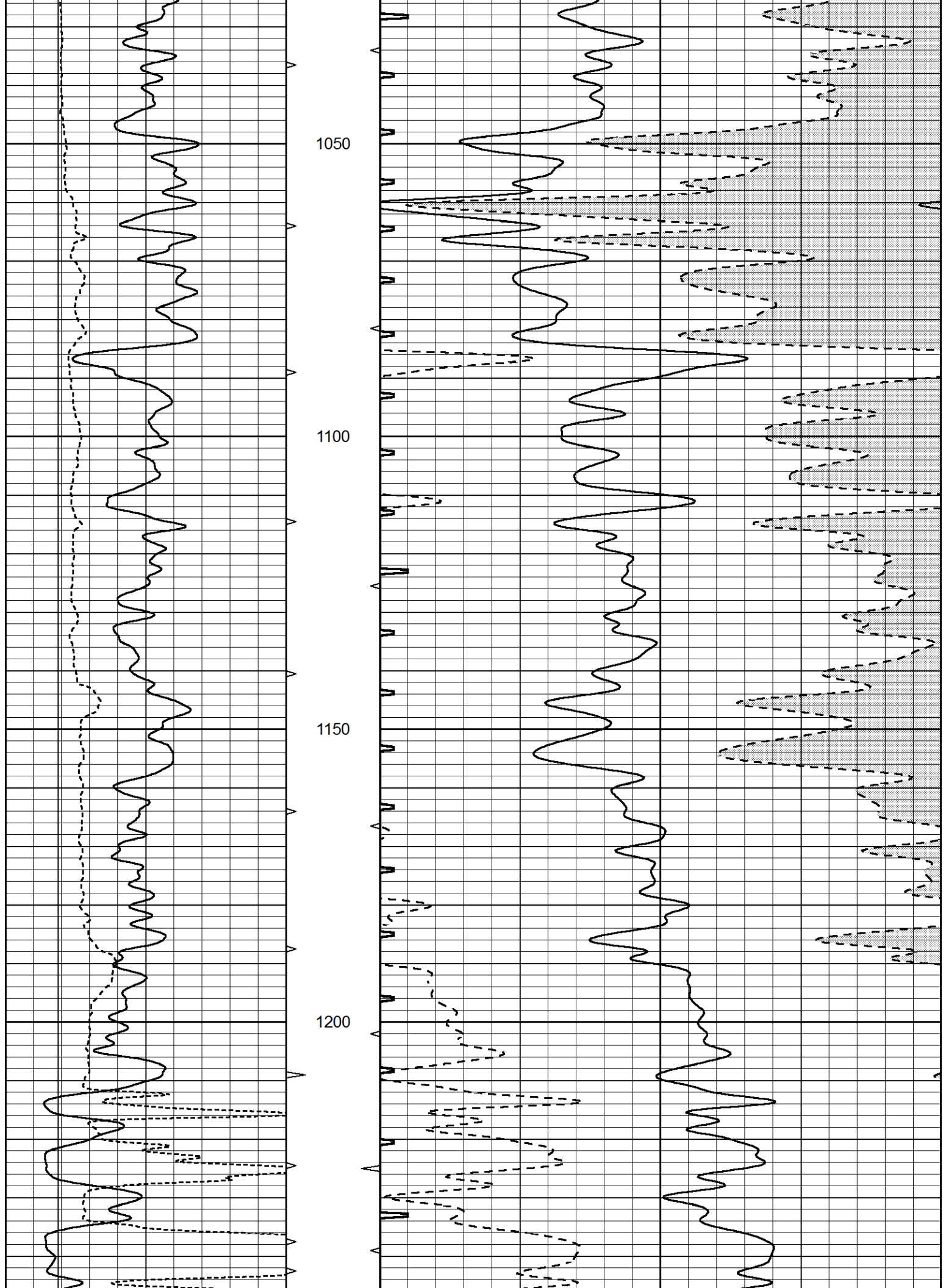


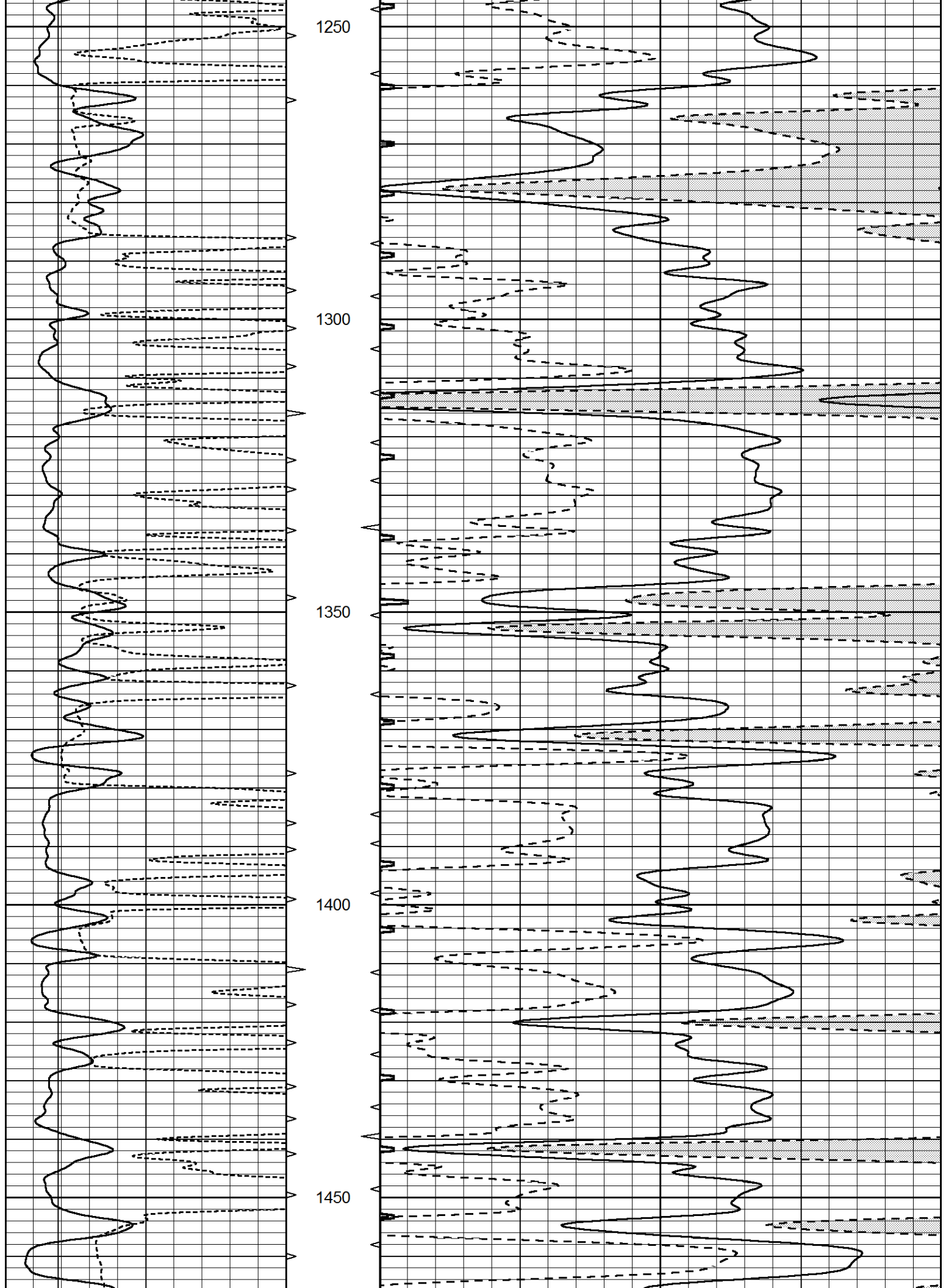


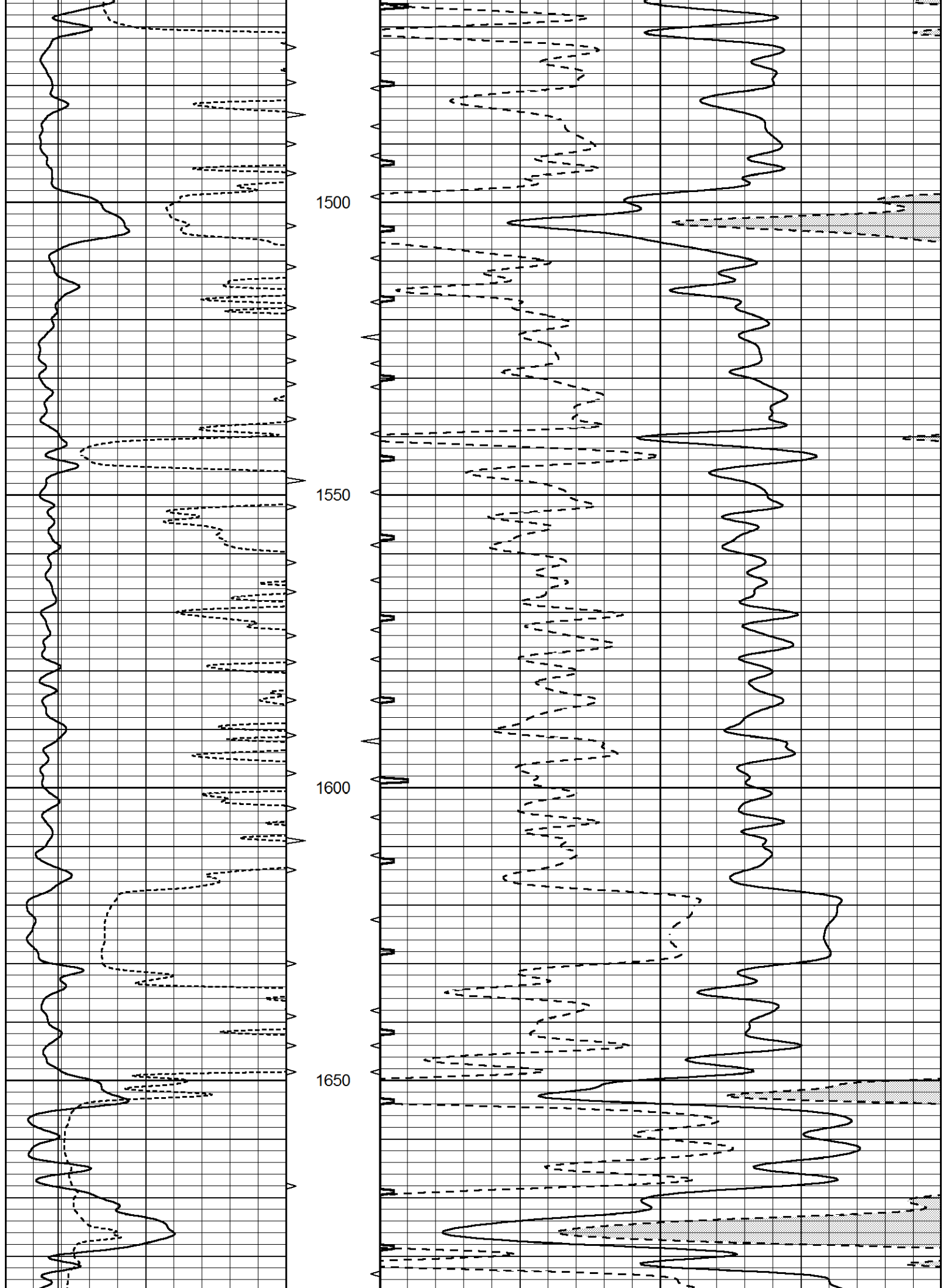
600
650
700
750
800

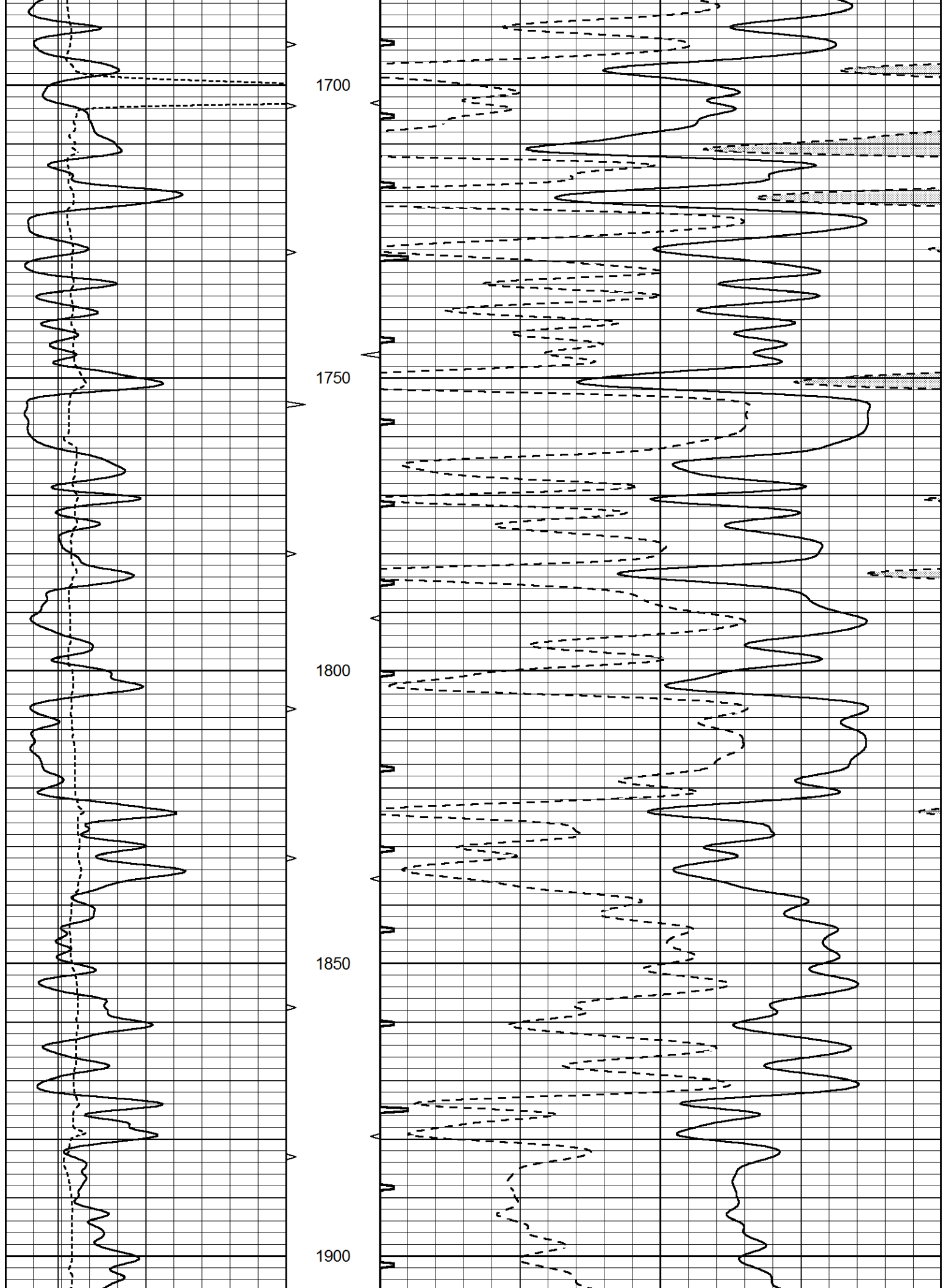


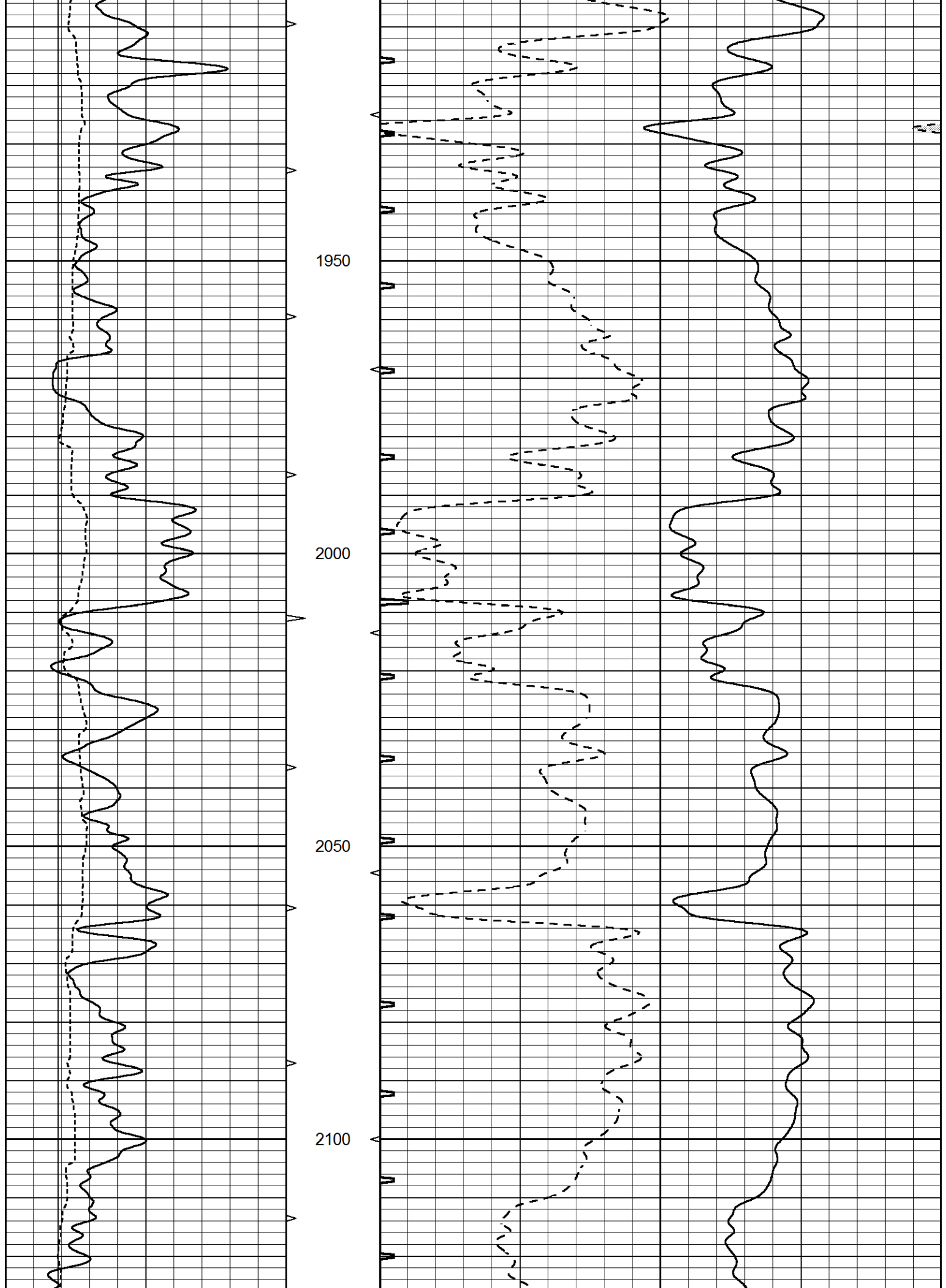


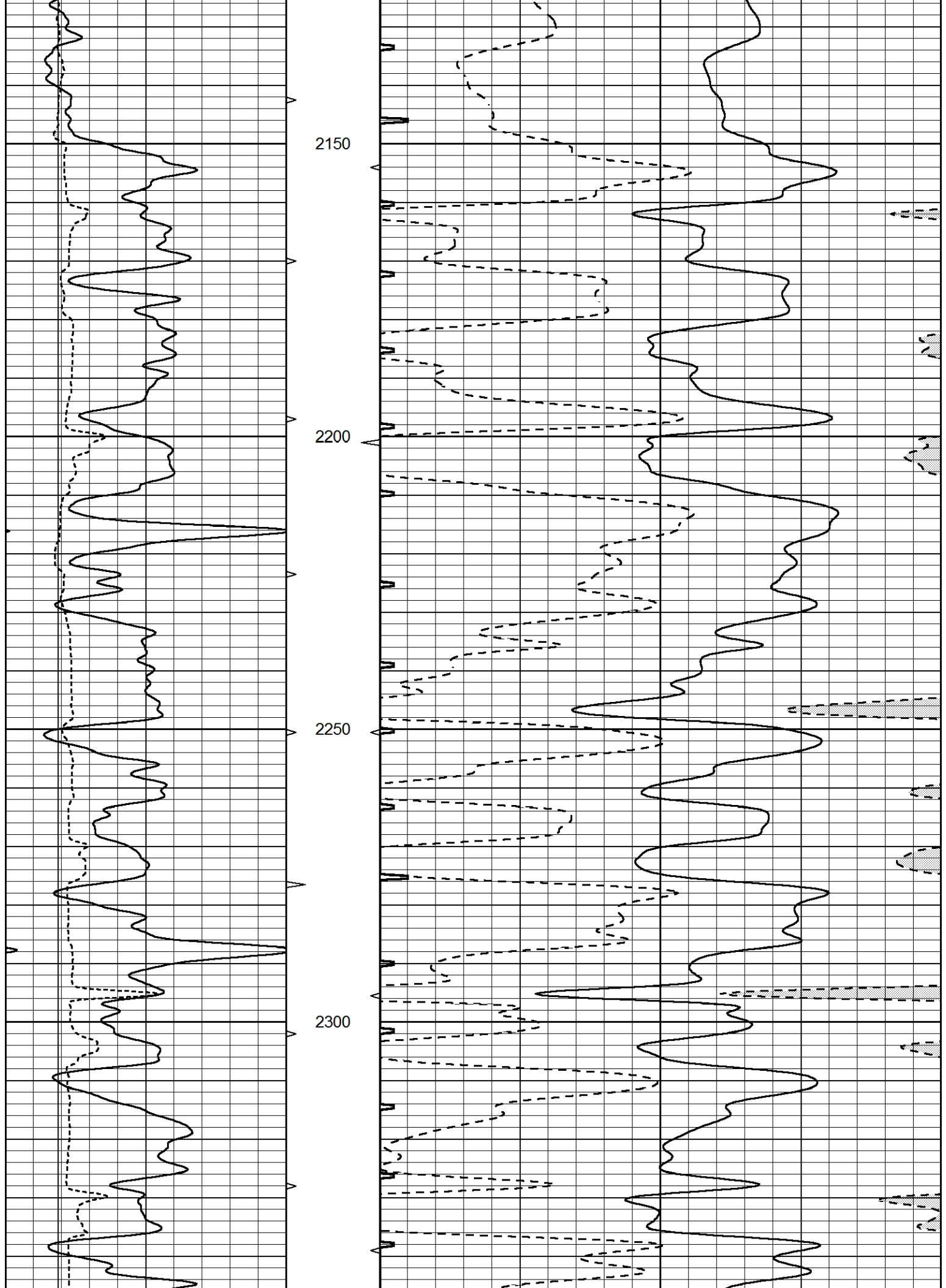


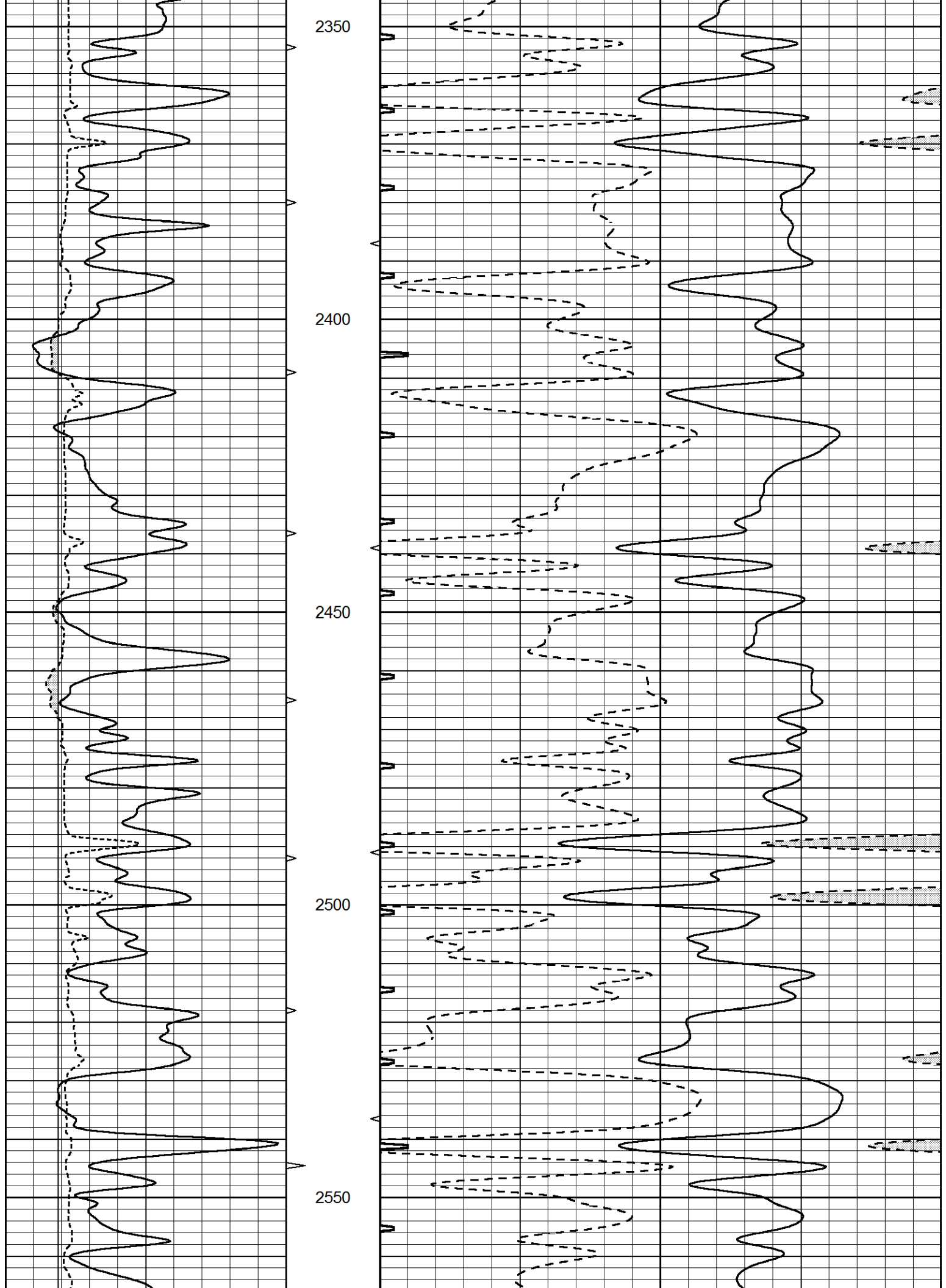


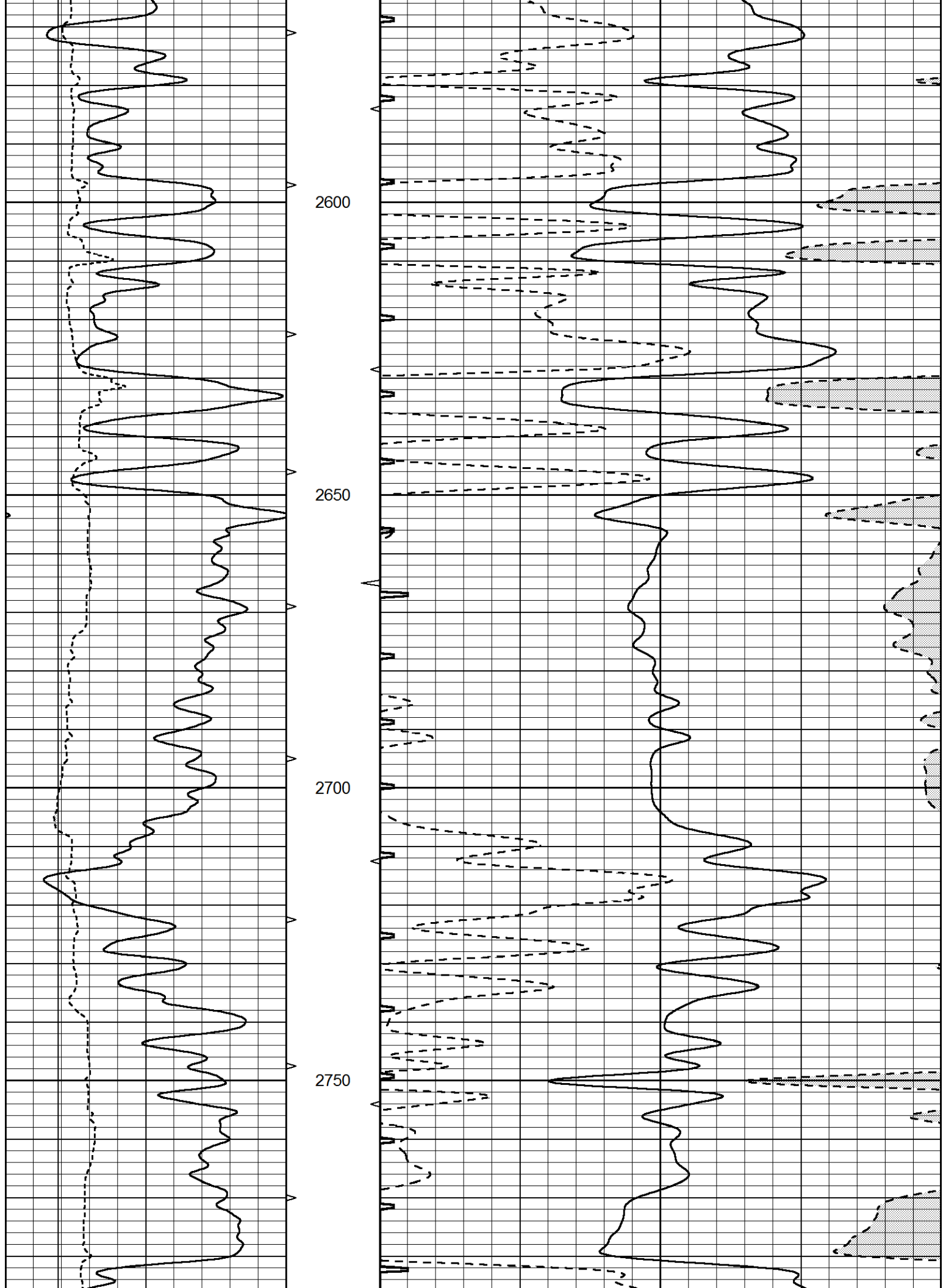


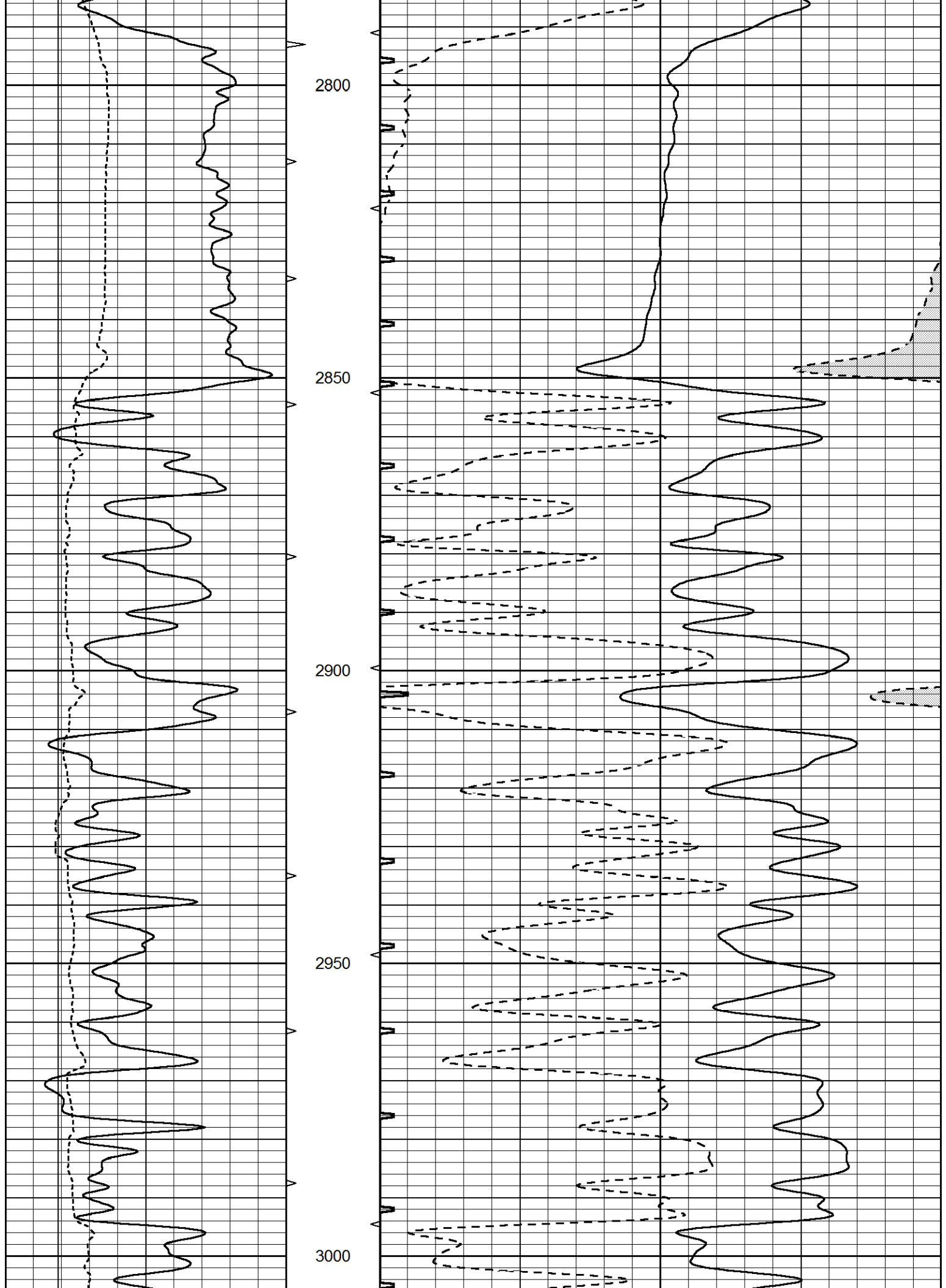


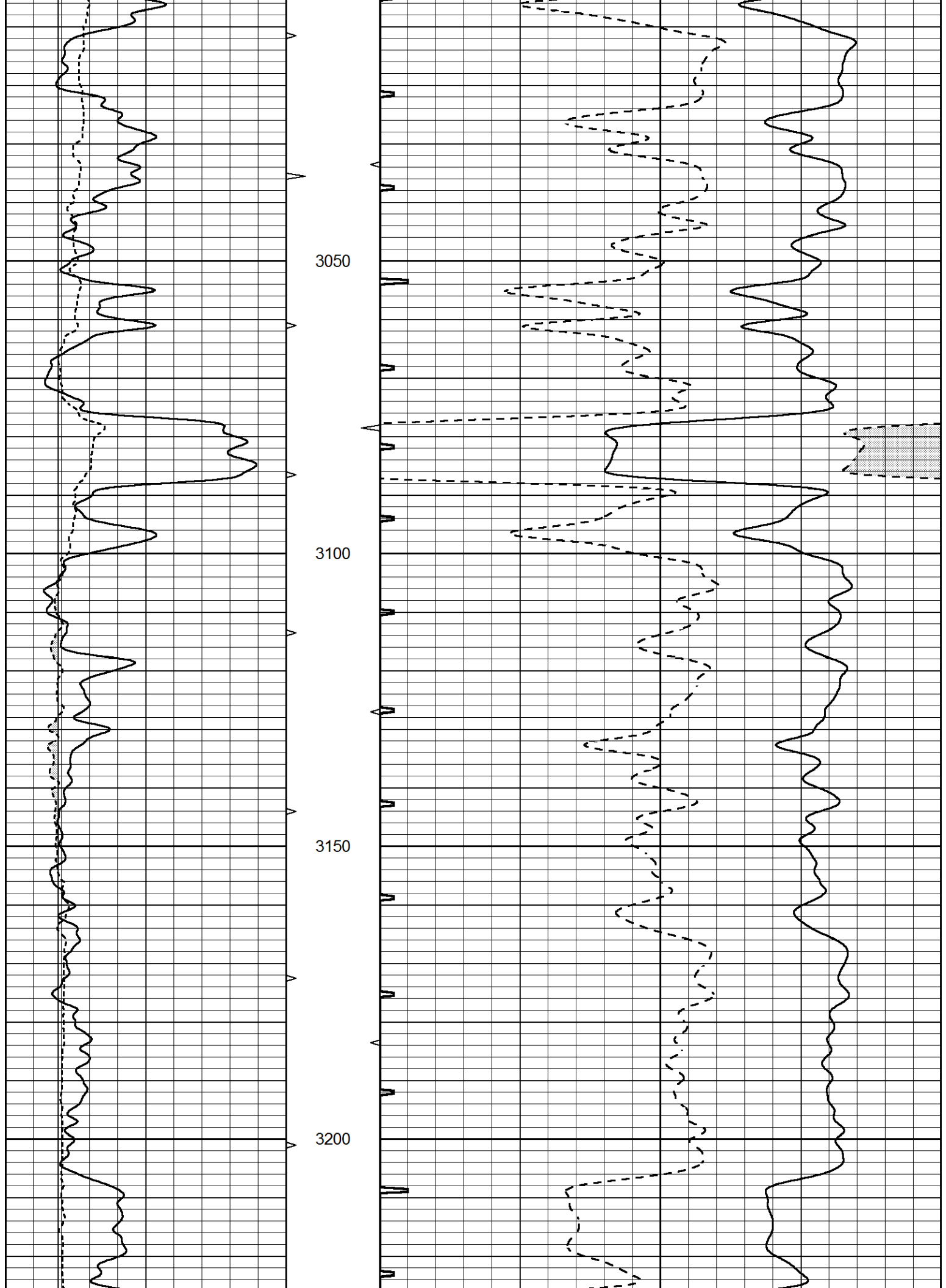


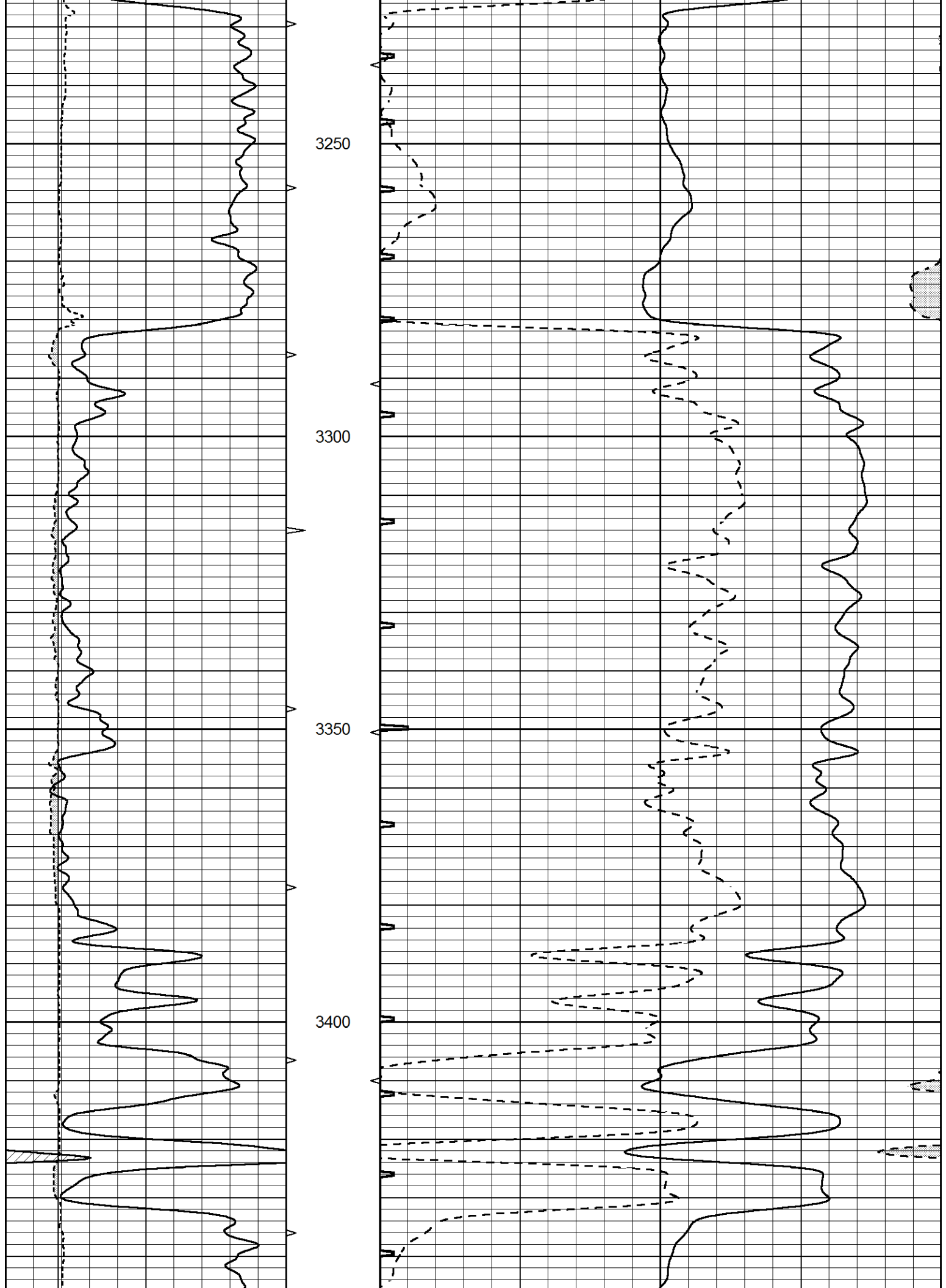


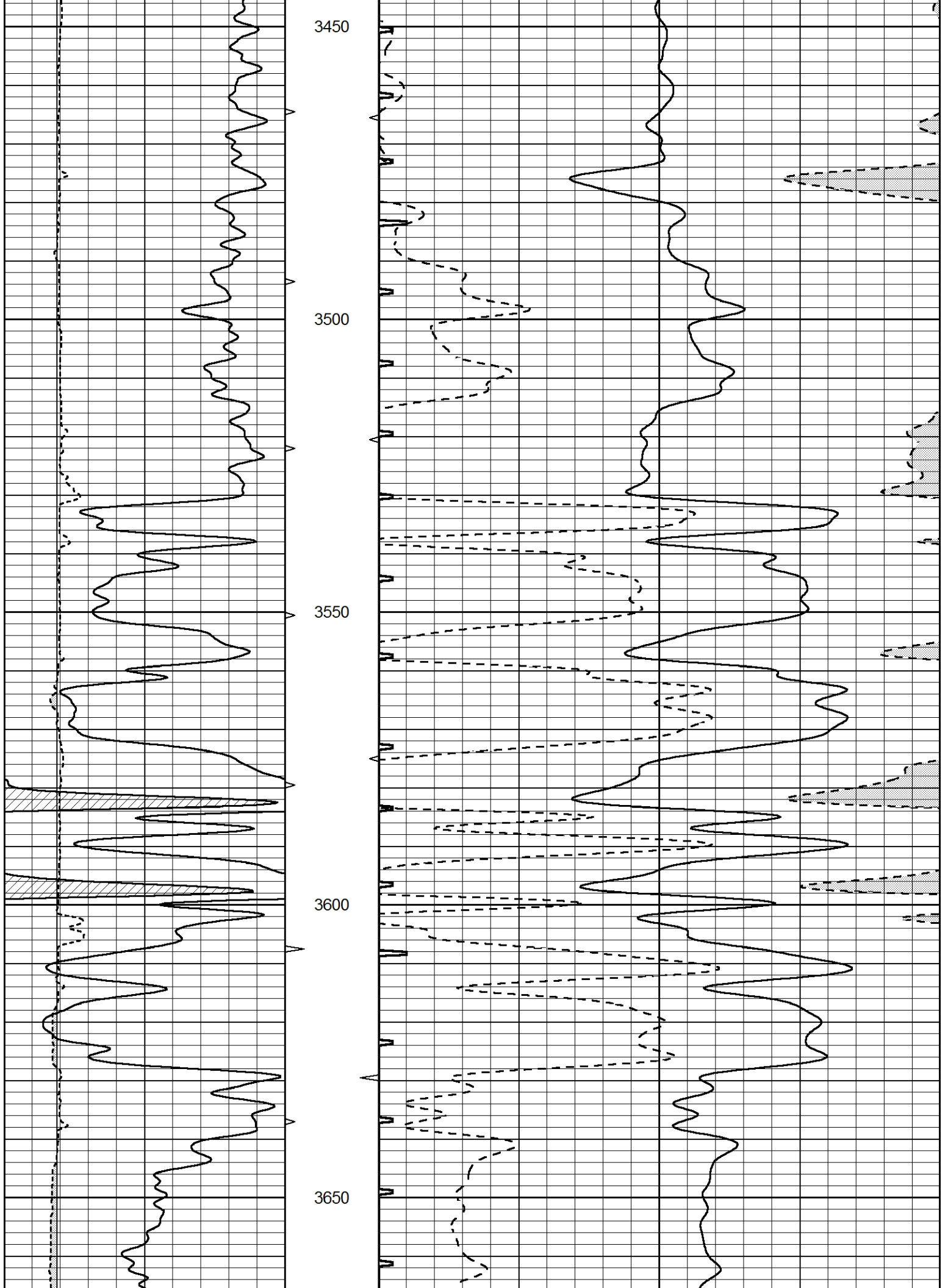


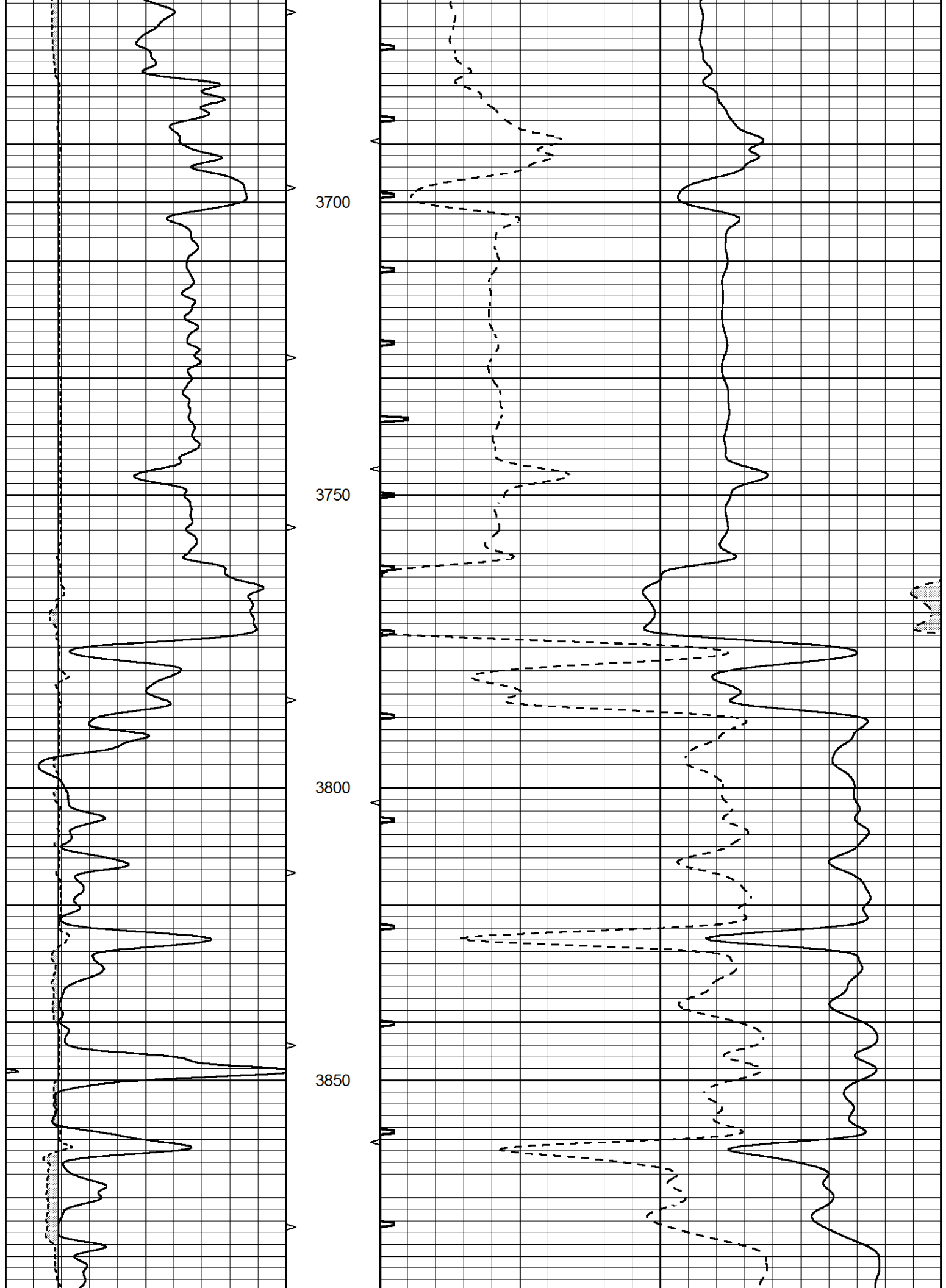


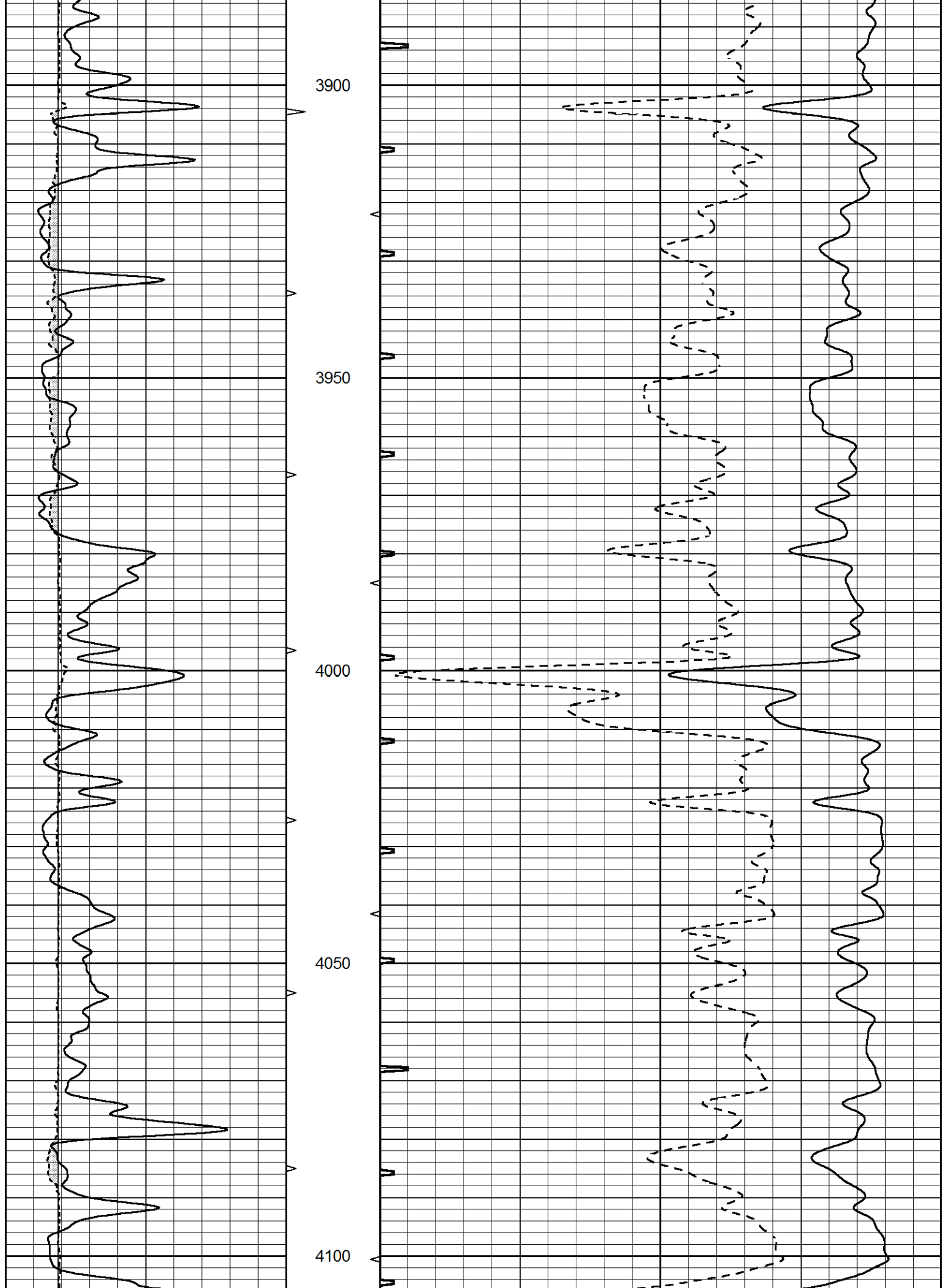


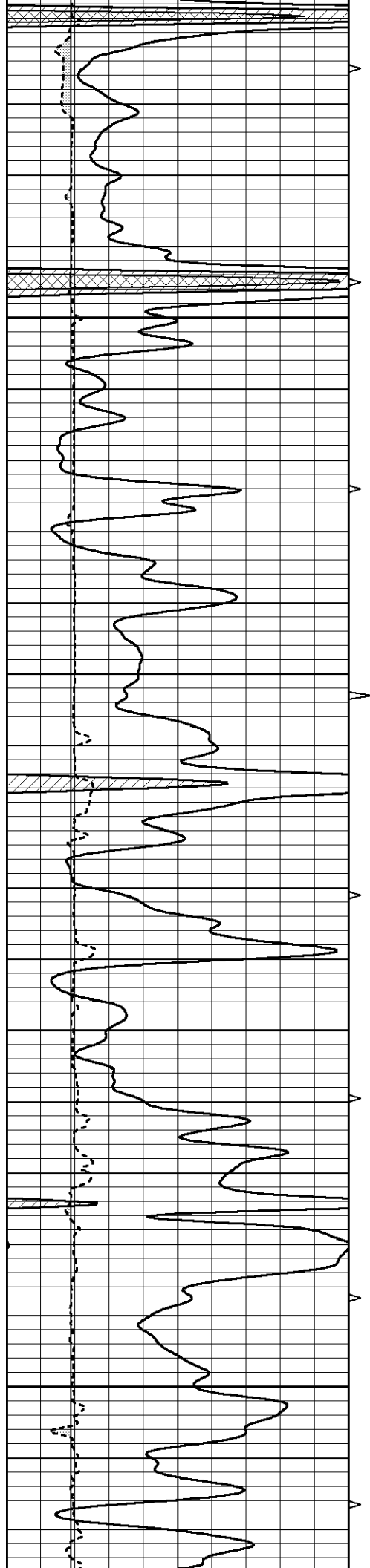










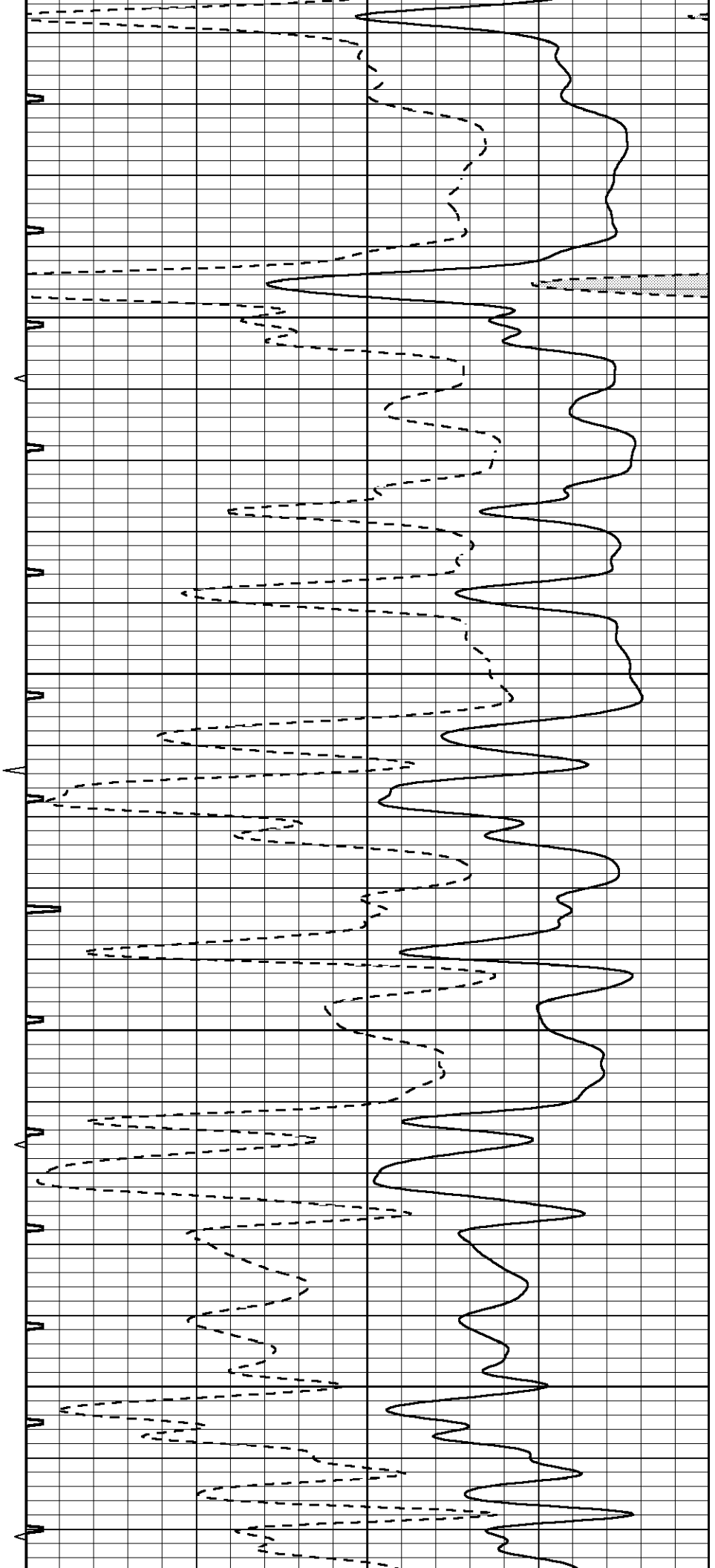


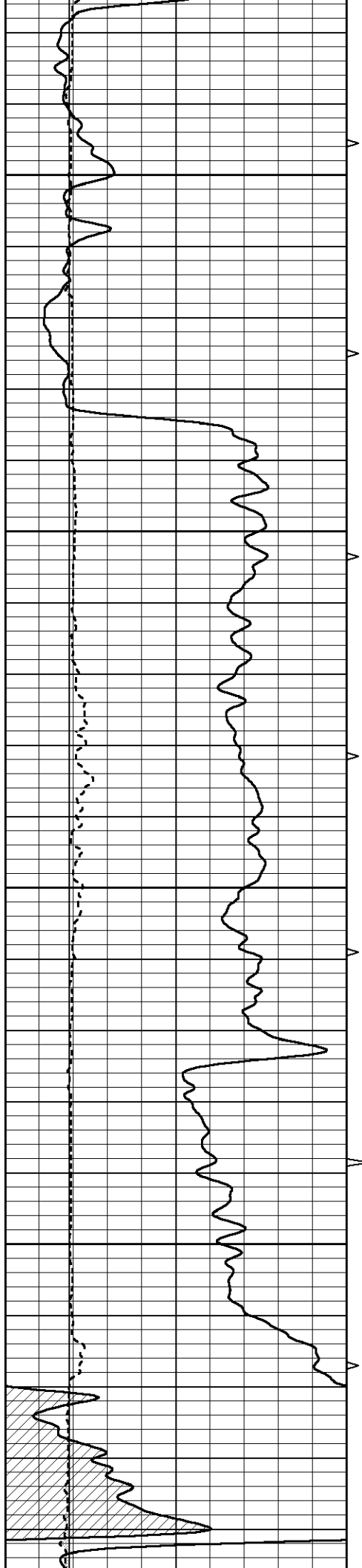
4150

4200

4250

4300



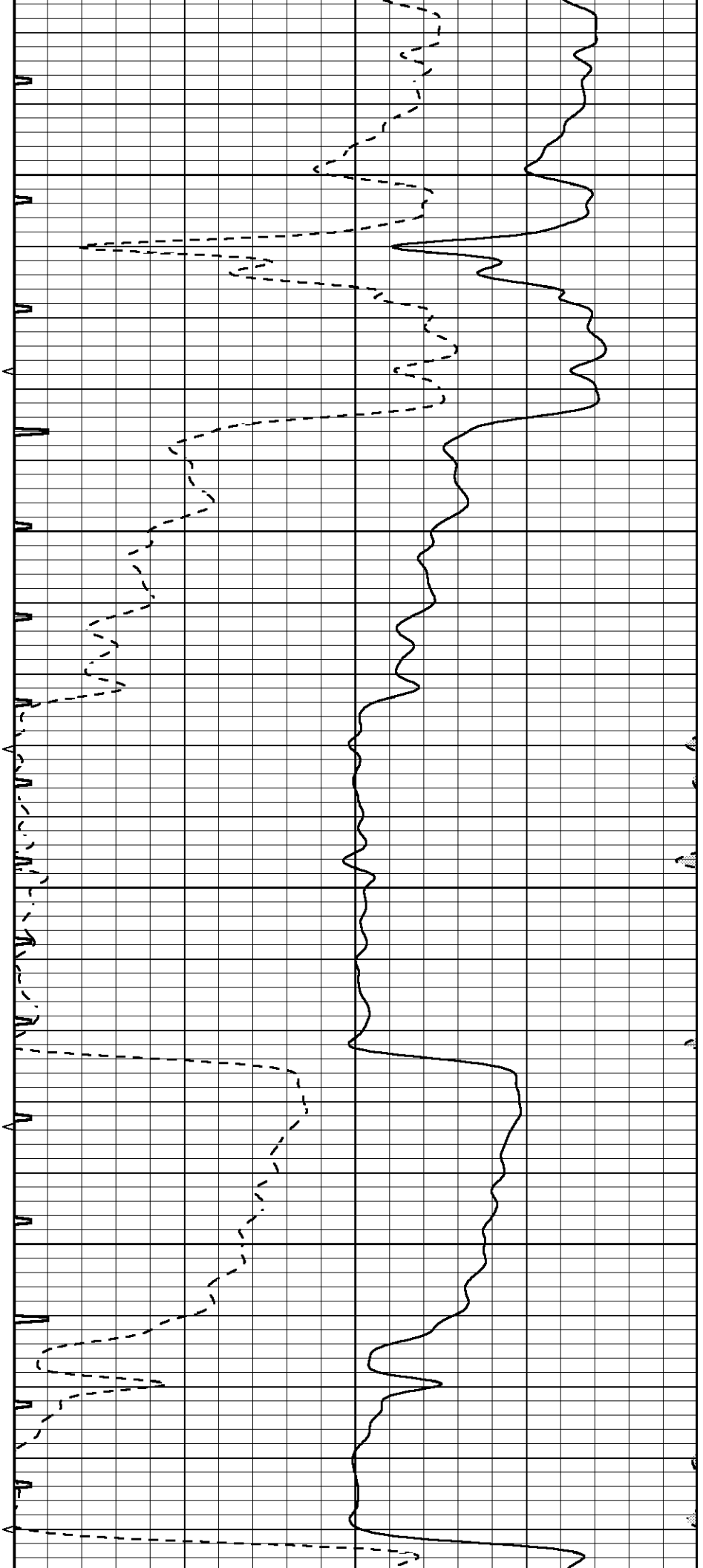


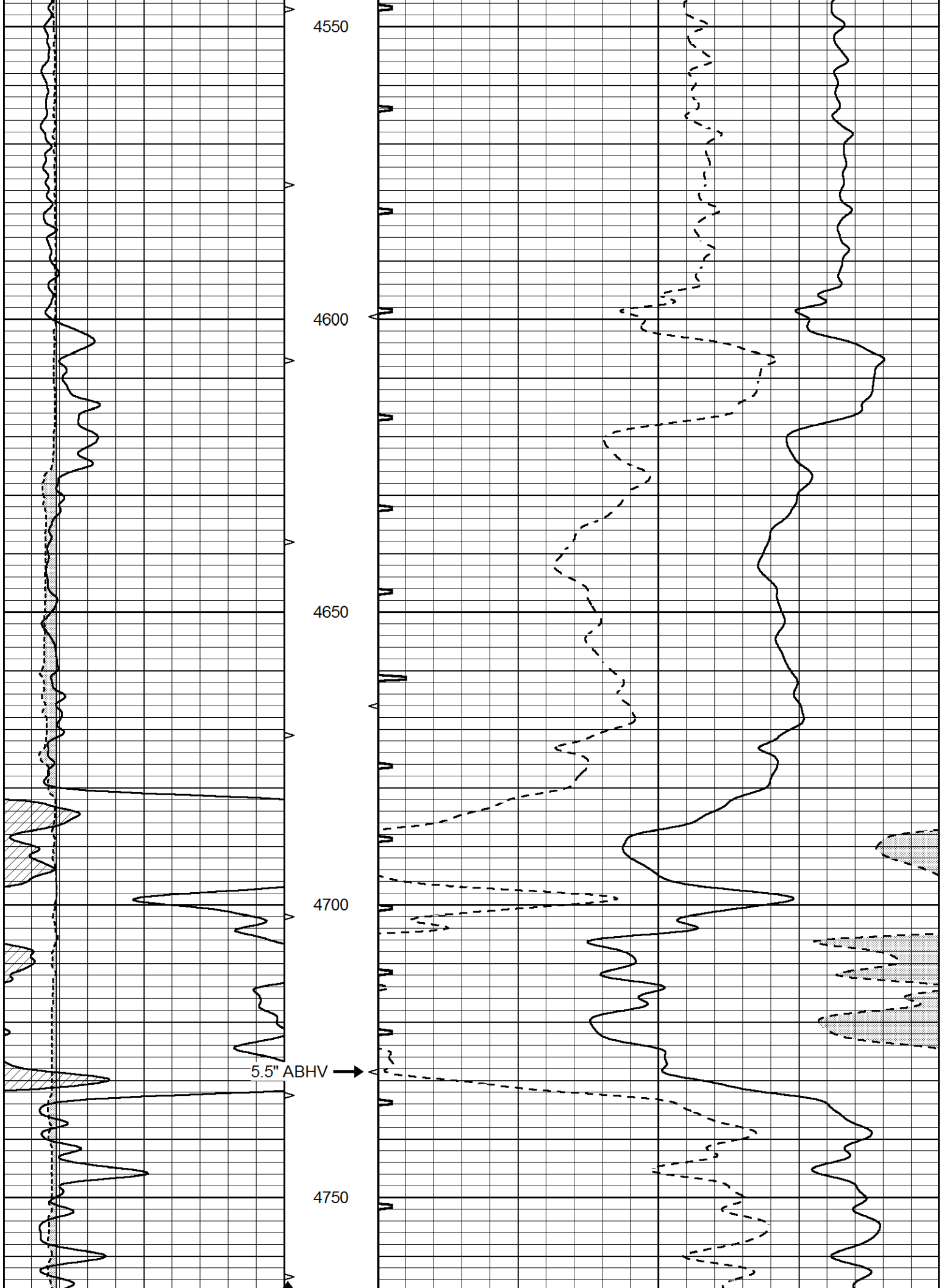
4350

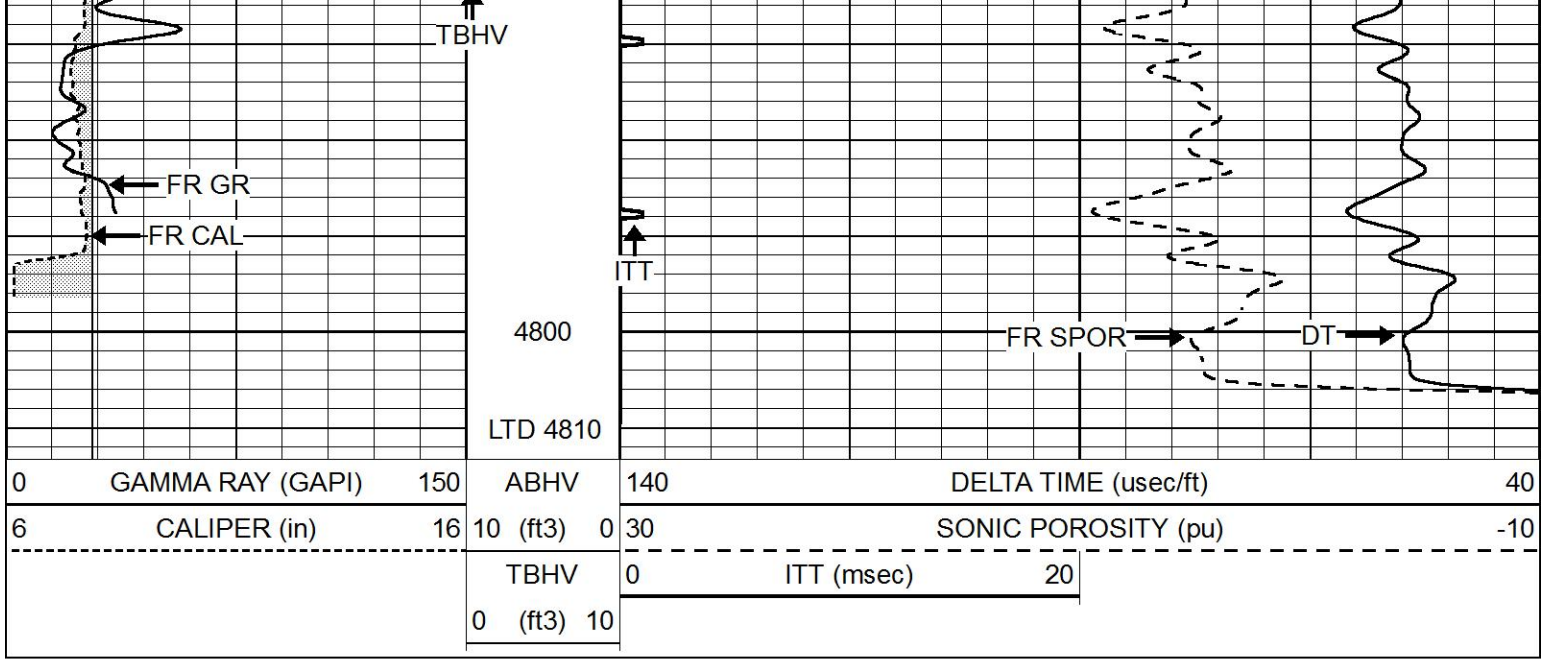
4400

4450

4500







REPEAT SECTION

Database File 7776pe.db
 Dataset Pathname pass9.1
 Presentation Format _slt
 Dataset Creation Sun May 07 21:46:05 2023
 Charted by Depth in Feet scaled 1:240

0	GAMMA RAY (GAPI)	150	ABHV	140	DELTA TIME (usec/ft)	40
6	CALIPER (in)	16	10 (ft3) 0	30	SONIC POROSITY (pu)	-10
			TBHV	0	ITT (msec)	20
			0 (ft3) 10			

