



**COMPENSATED
DENSITY/NEUTRON
PE LOG**

Company INDIAN OIL COMPANY, INC.
Well PEACE PIPE #1
Field UNNAMED
County BARBER State KANSAS

Location: API #: 15-007-24469-0000
948' FNL & 2437' FEL
N.W. - SW - NW - NE
SEC 26 TWP 30S RGE 12W
Permanent Datum GROUND LEVEL Elevation 1699
Log Measured From KELLY BUSHING 12' A.G.L.
Drilling Measured From KELLY BUSHING
Other Services
DILMEL
SONIC
Elevation
K.B. 1711
D.F. 1709
G.L. 1699

Date	5/7/23
Run Number	ONE
Depth Driller	4810
Depth Logger	4810
Bottom Logged Interval	4786
Top Log Interval	2500
Casing Driller	8 5/8" @ 225
Casing Logger	225
Bit Size	7 7/8
Type Fluid in Hole	CHEMICAL MUD
Density / Viscosity	9.4+/53
pH / Fluid Loss	10.5/8.8
Source of Sample	FLOWLINE
Rm @ Meas. Temp	.700 @ 78F
Rmf @ Meas. Temp	.525 @ 78F
Rmc @ Meas. Temp	.840 @ 78F
Source of Rmf / Rmc	MEASUREMENT
Rm @ BHT	.444 @ 123F
Time Circulation Stopped	2 HOURS
Time Logger on Bottom	4:00 P.M.
Maximum Recorded Temperature	123F
Equipment Number	3802
Location	HAYS, KANSAS
Recorded By	COLE ROBBEN
Witnessed By	AARON YOUNG

<<< Fold Here >>>

All interpretations are opinions based on inferences from electrical or other measurements and we cannot and do not guarantee the accuracy or correctness of any interpretation, and we shall not, except in the case of gross or willful negligence on our part, be liable or responsible for any loss, costs, damages, or expenses incurred or sustained by anyone resulting from any interpretation made by any of our officers, agents or employees. These interpretations are also subject to our general terms and conditions set out in our current Price Schedule.

Comments

THANK YOU FOR USING ELI WIRELINE SERVICES, HAYS, KS. (785) 628-6395

DIRECTIONS:

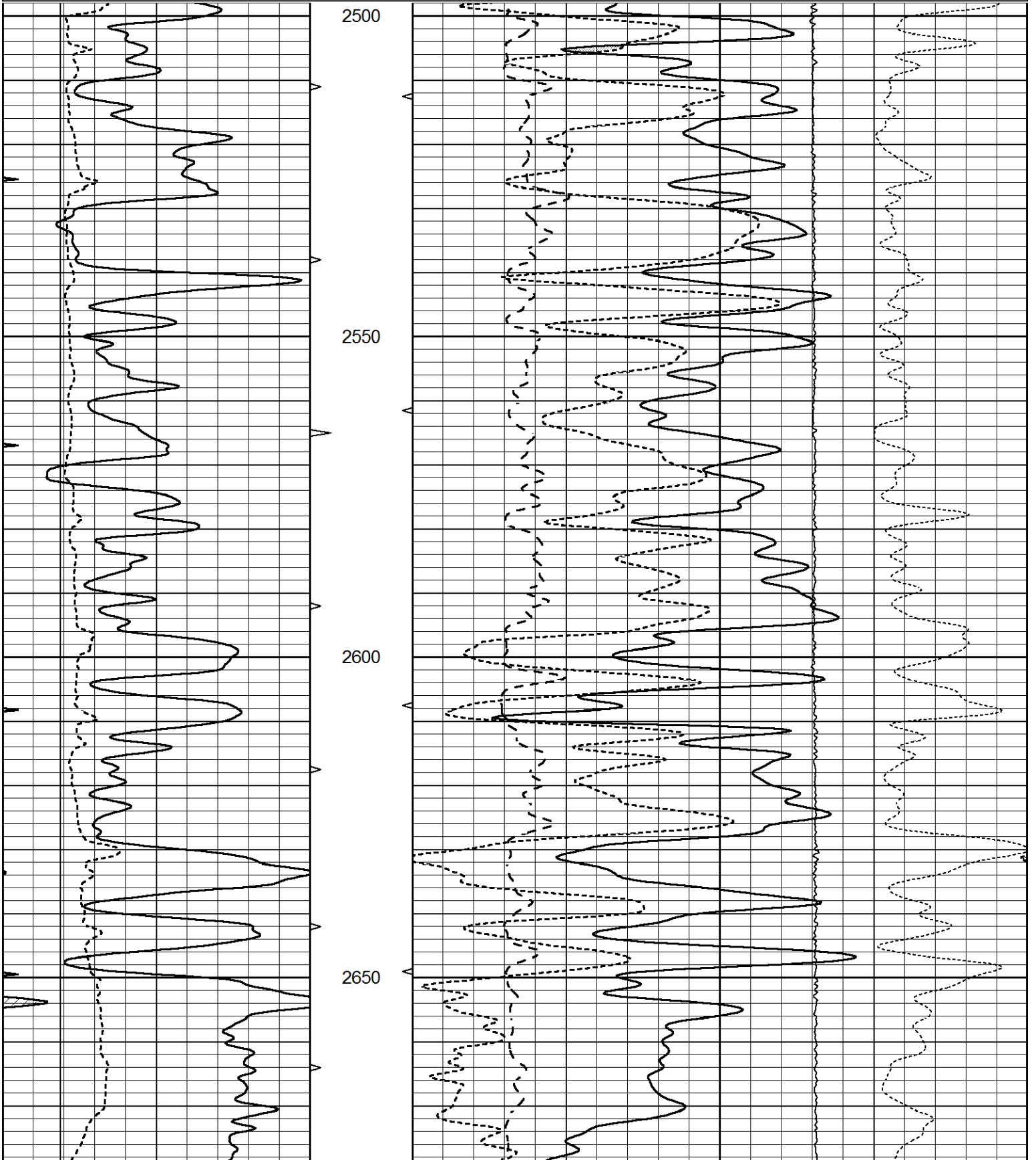
MEDICINE LODGE NORTH ON HIGHWAY 281 TO NE RESORT ROAD, NORTH 2 MILES, WEST ON
ARROWHEAD ROAD 1 MILE, EAST INTO

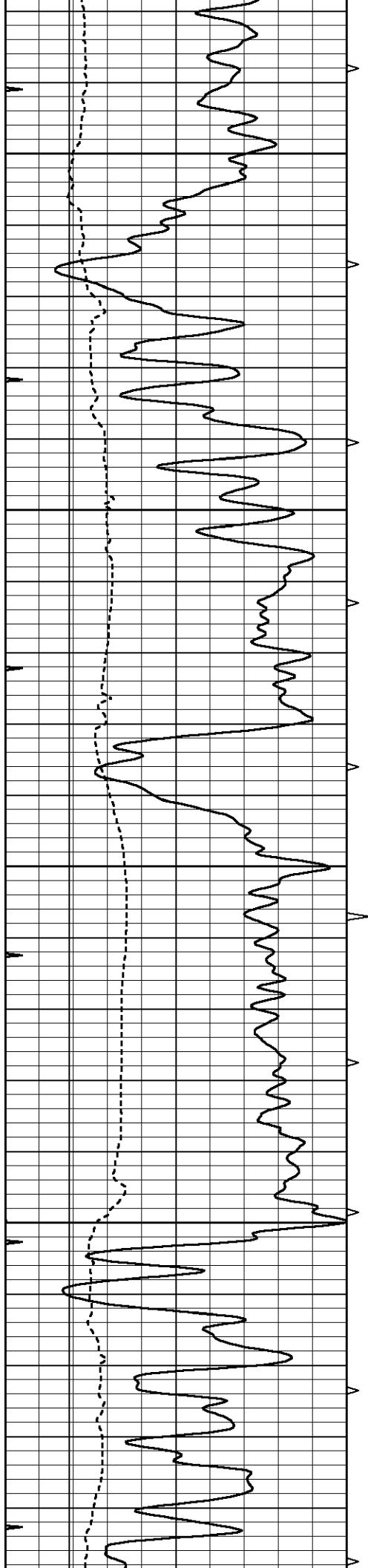


MAIN SECTION

Database File 7776pe.db
 Dataset Pathname pass7PE
 Presentation Format _ldt_neu
 Dataset Creation Sun May 07 19:54:34 2023
 Charted by Depth in Feet scaled 1:240

0	GAMMA RAY (GAPI)	150	ABHV	30	COMPENSATED DENSITY (pu)				-10	
6	CALIPER (in)	16	10 (ft3)	0	30	COMPENSATED NEUTRON (pu)				-10
0	MINMK	20	TBHV	0	PE	10	-0.25	CORRECTION (g/cc)	0.25	
			0 (ft3)	10			0	LTEN (lb)	5000	



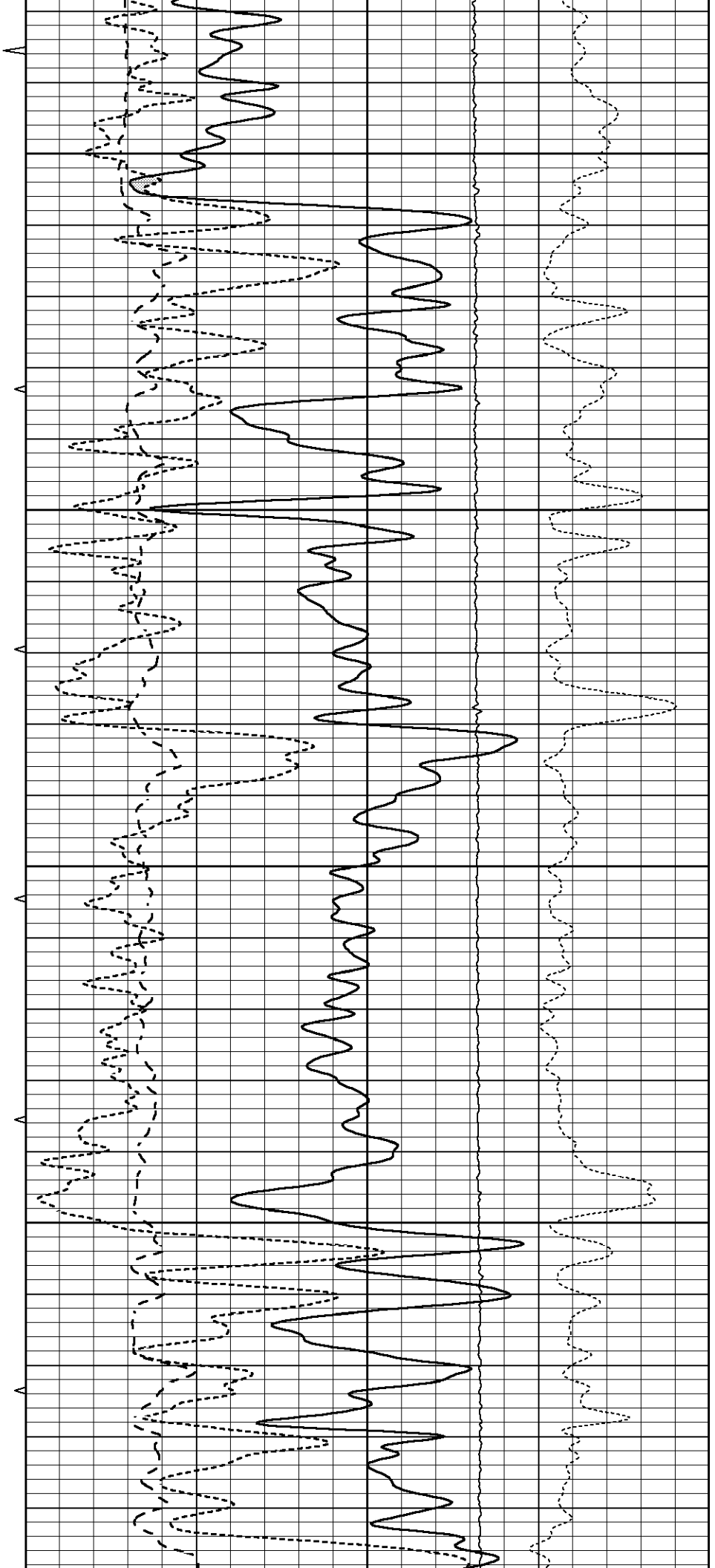


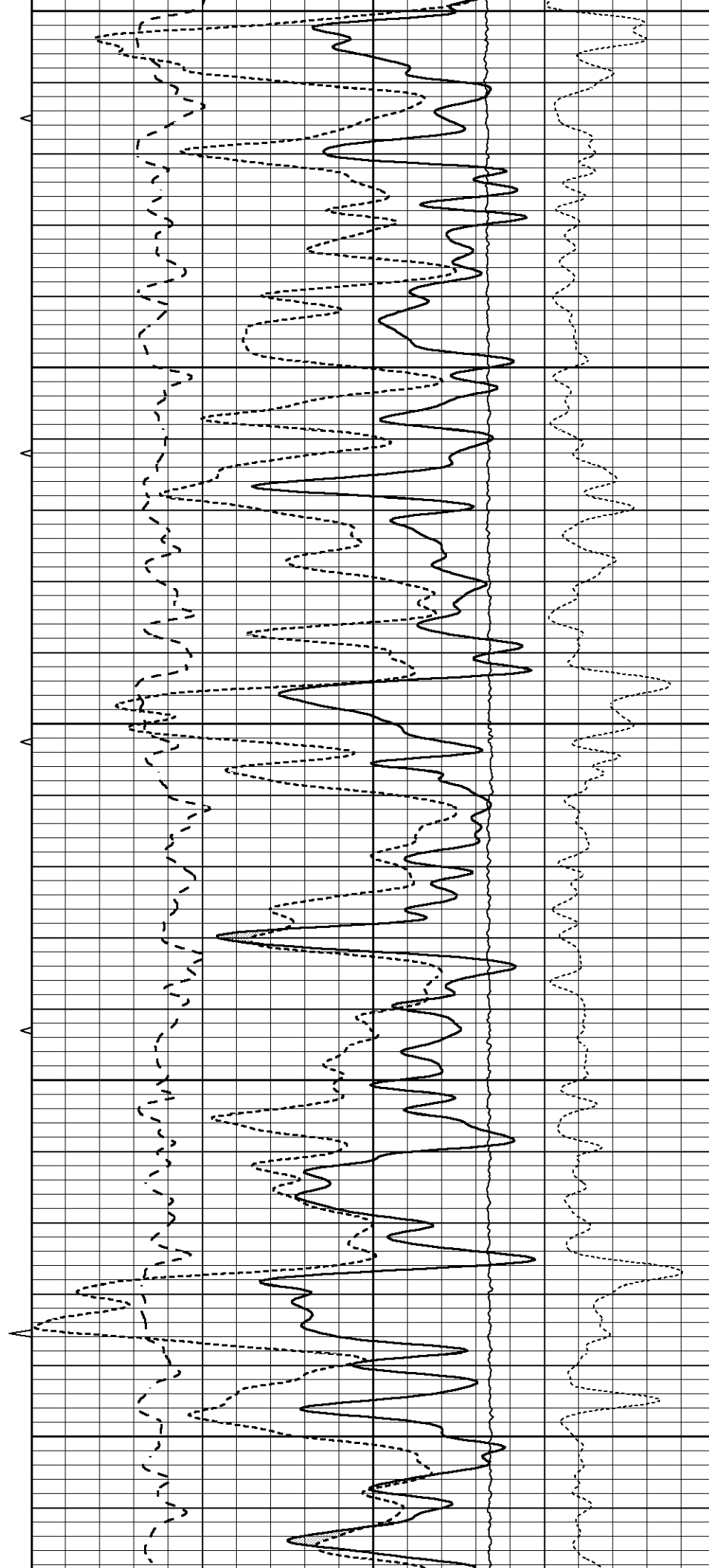
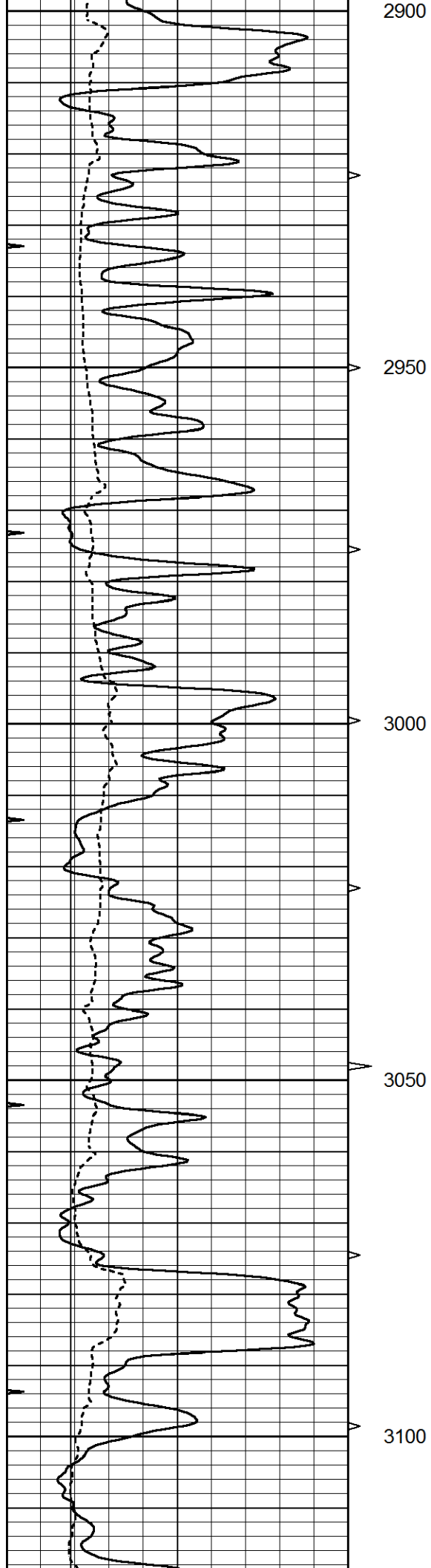
2700

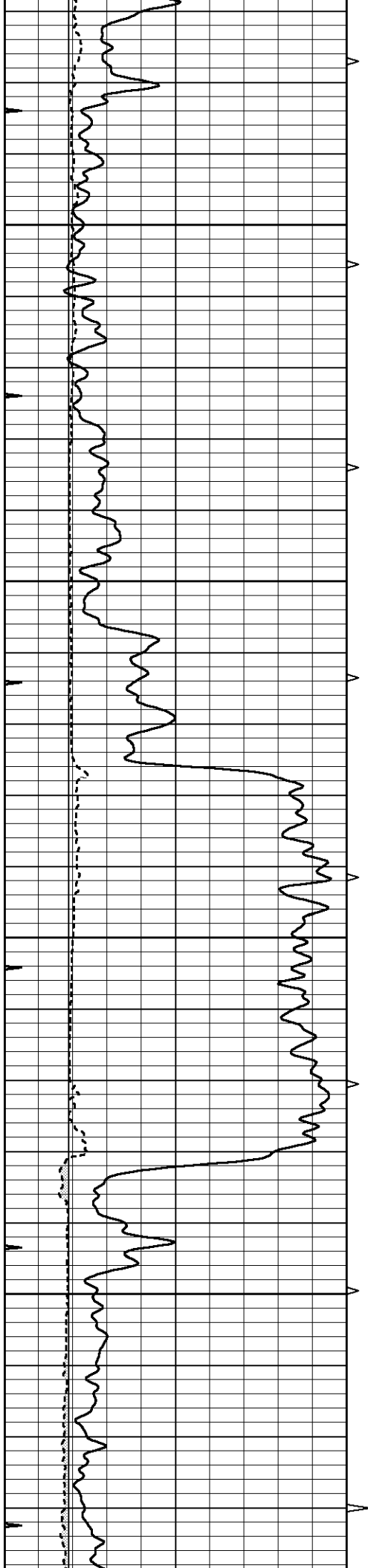
2750

2800

2850





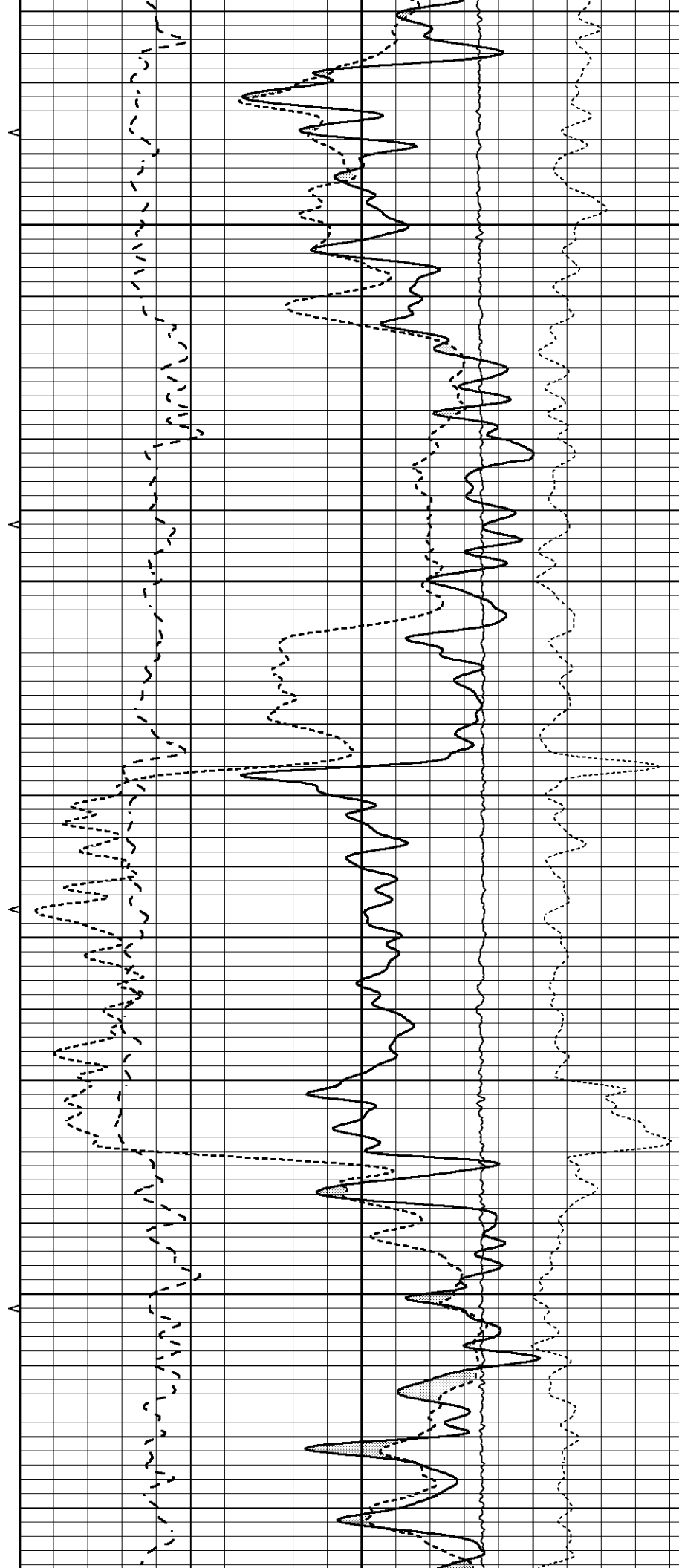


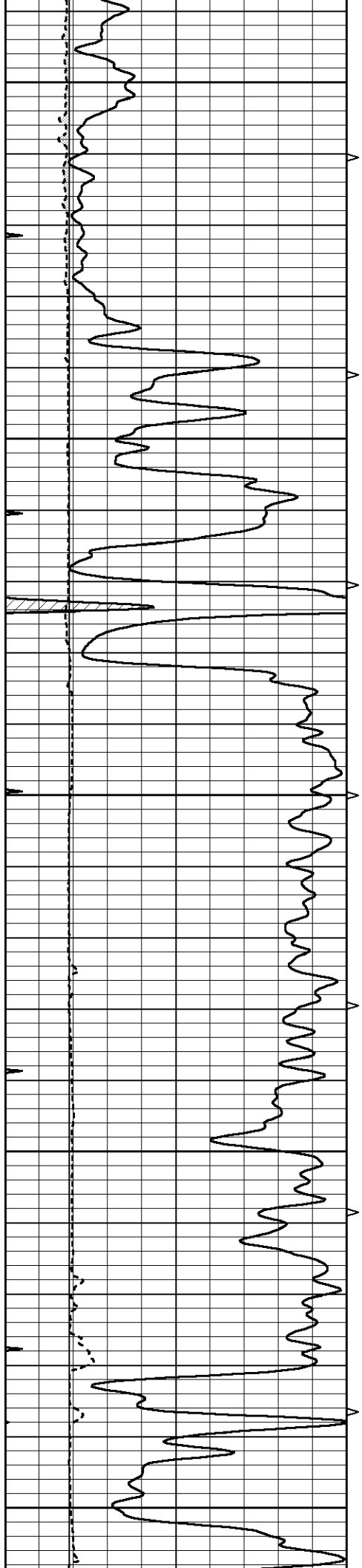
3150

3200

3250

3300





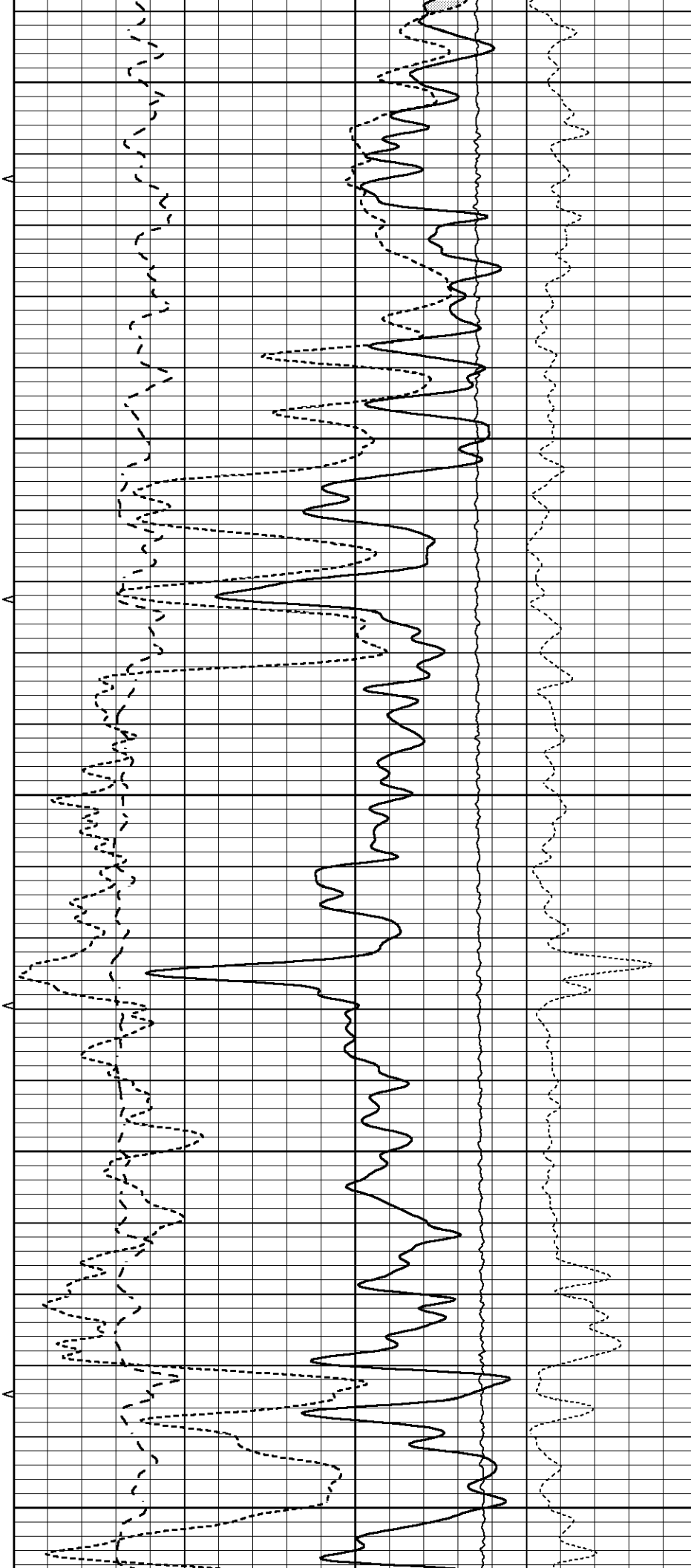
3350

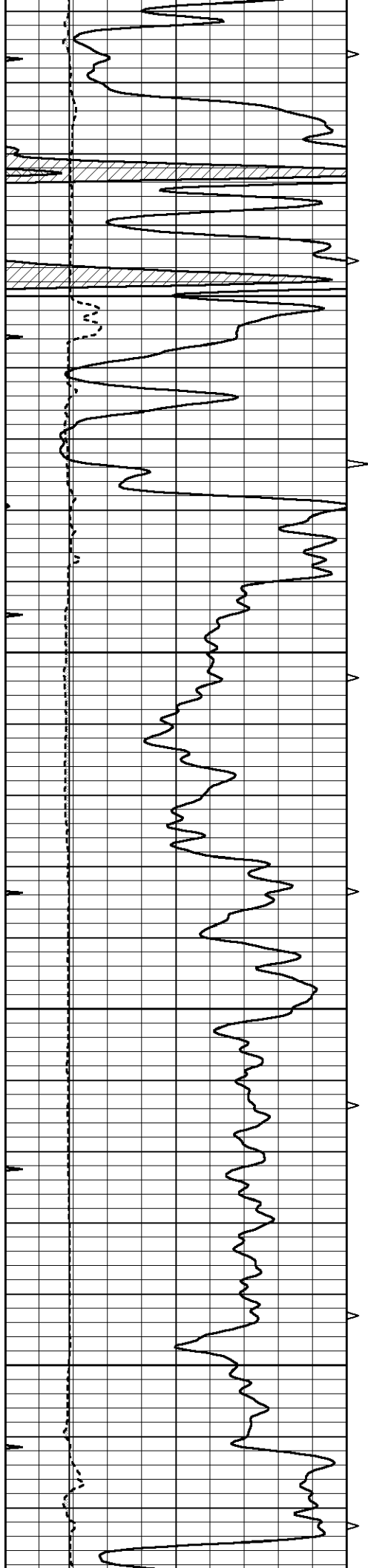
3400

3450

3500

3550



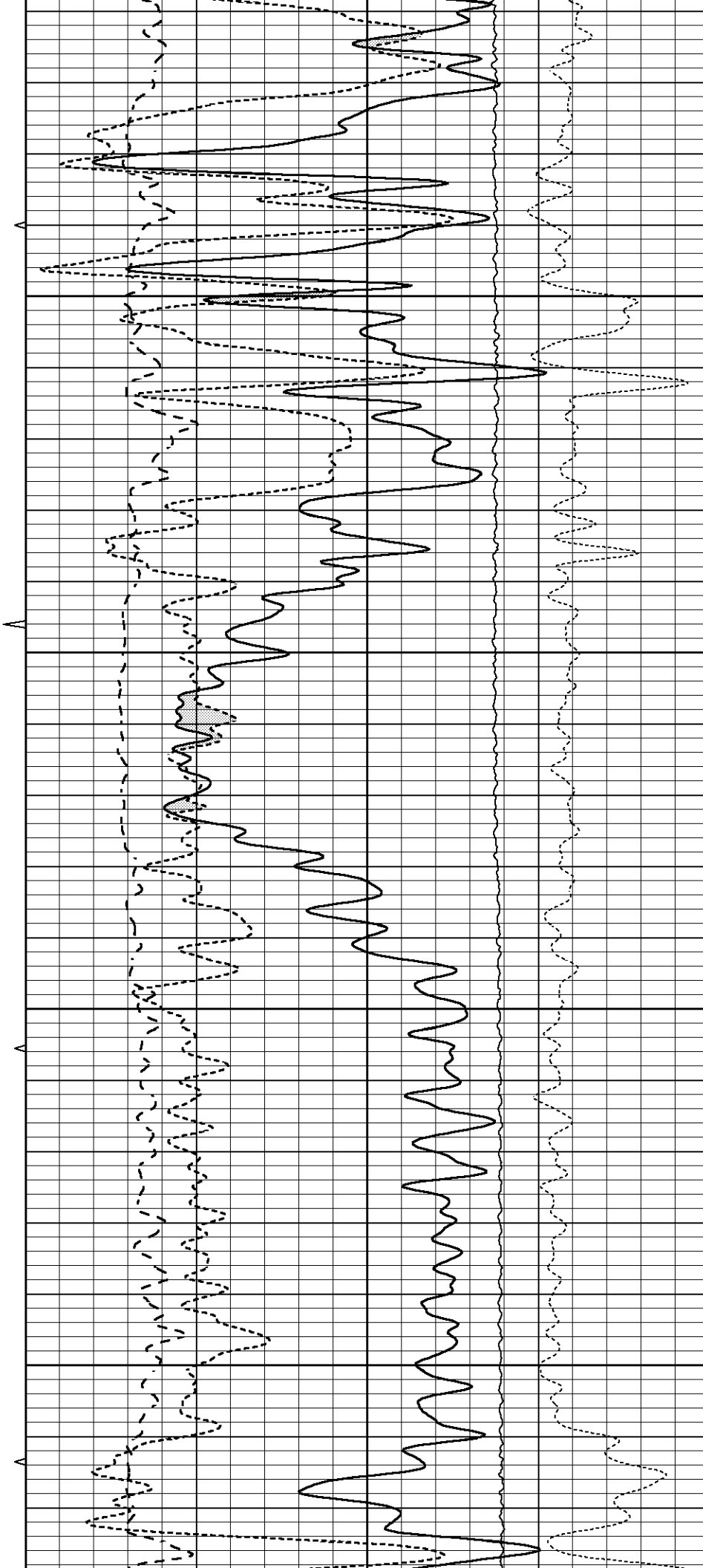


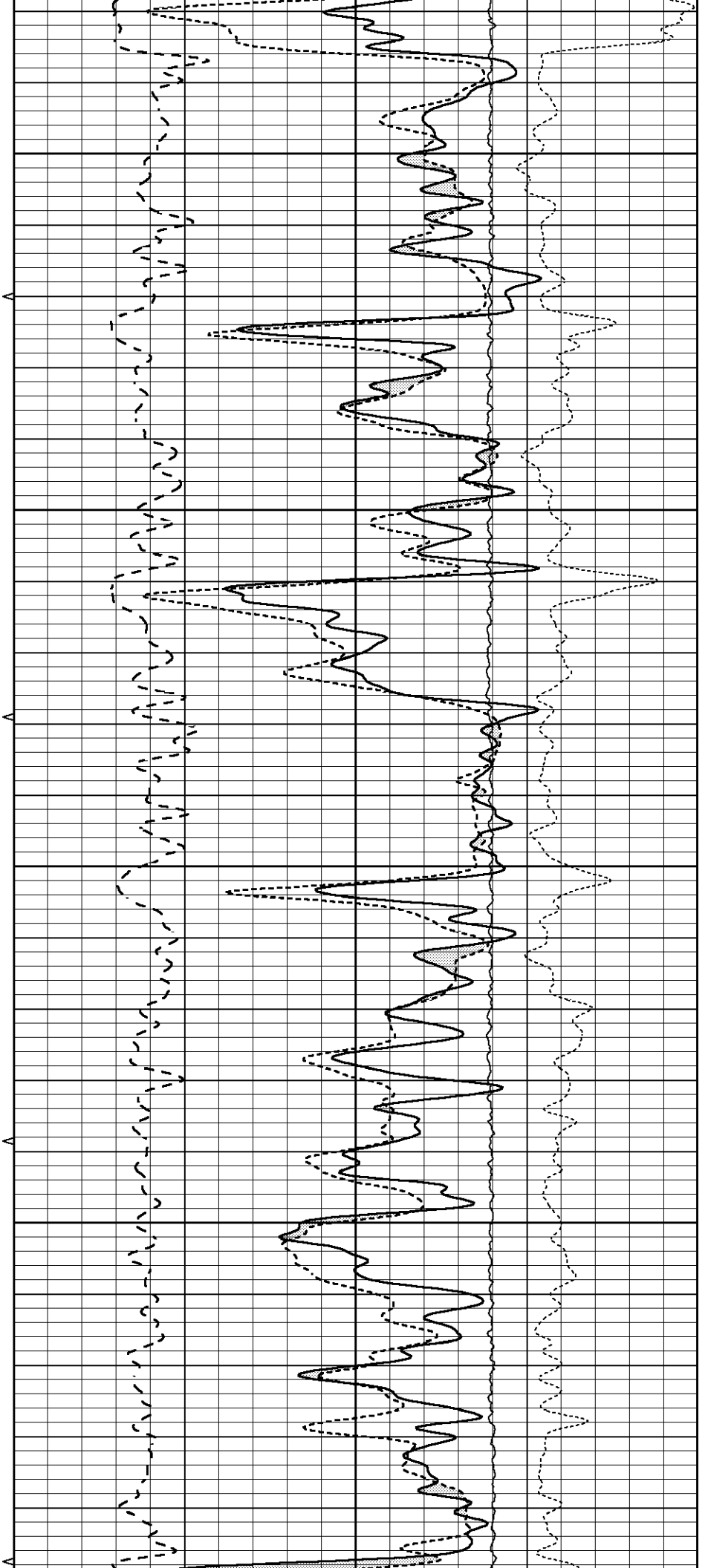
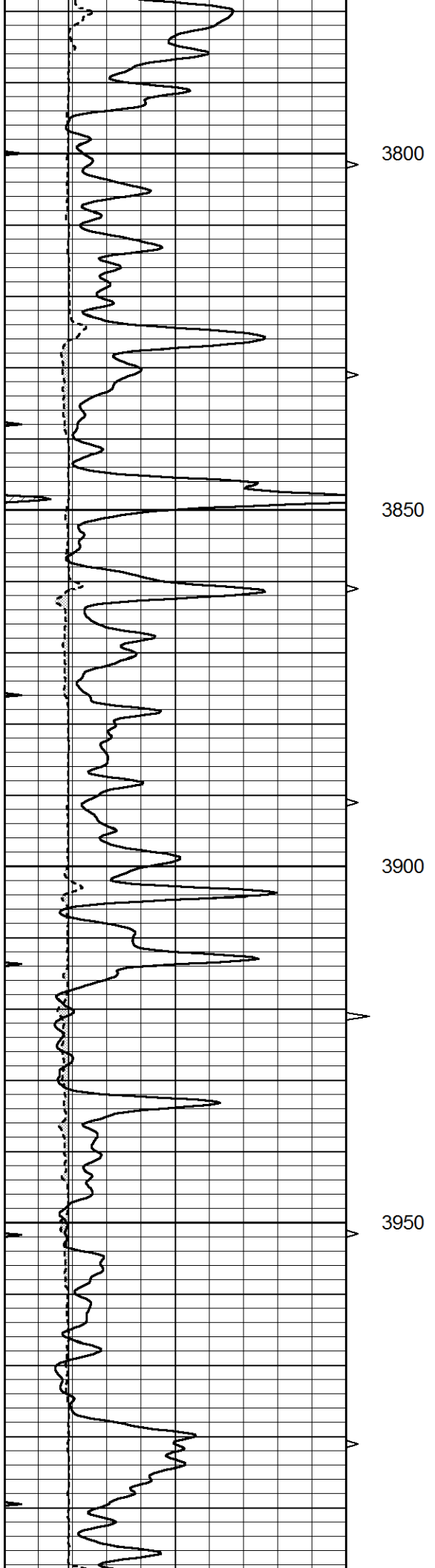
3600

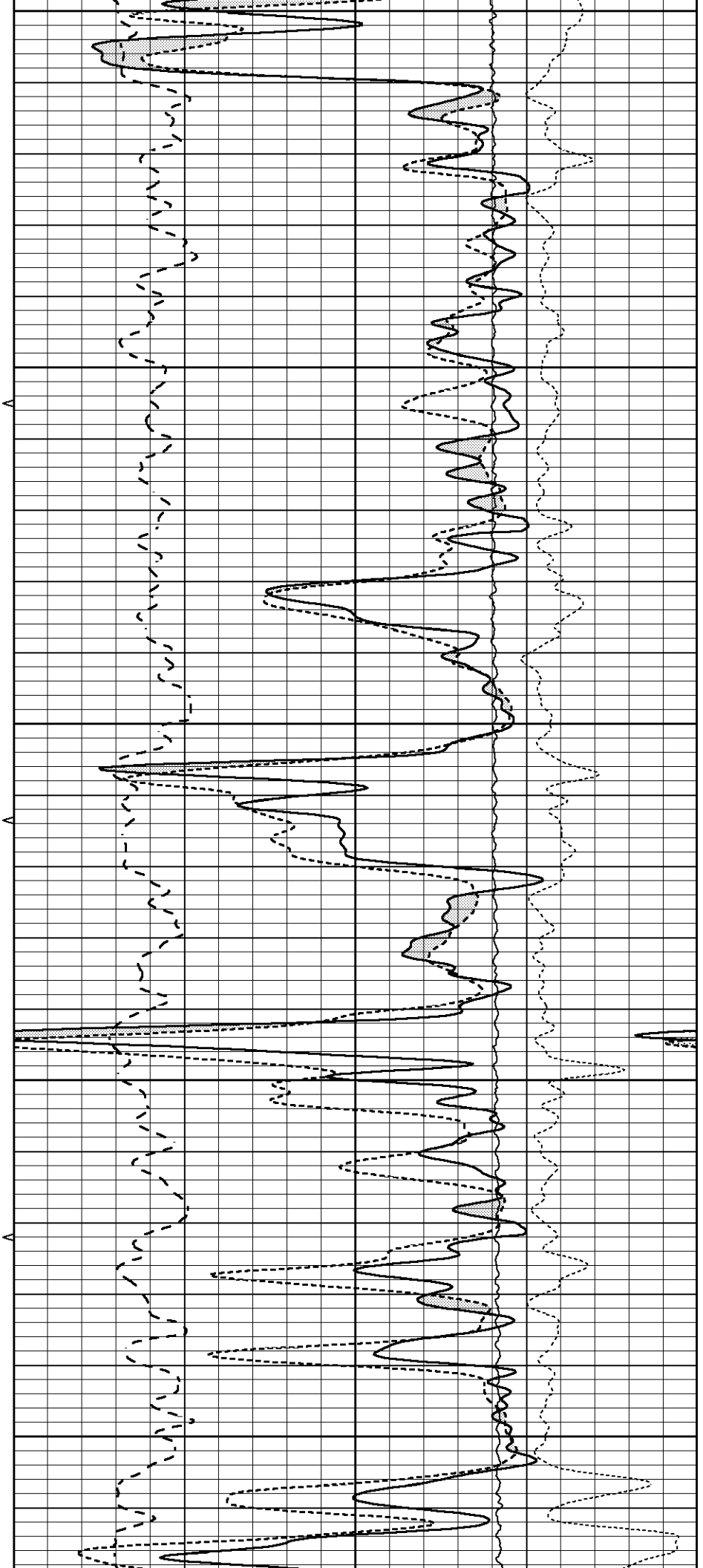
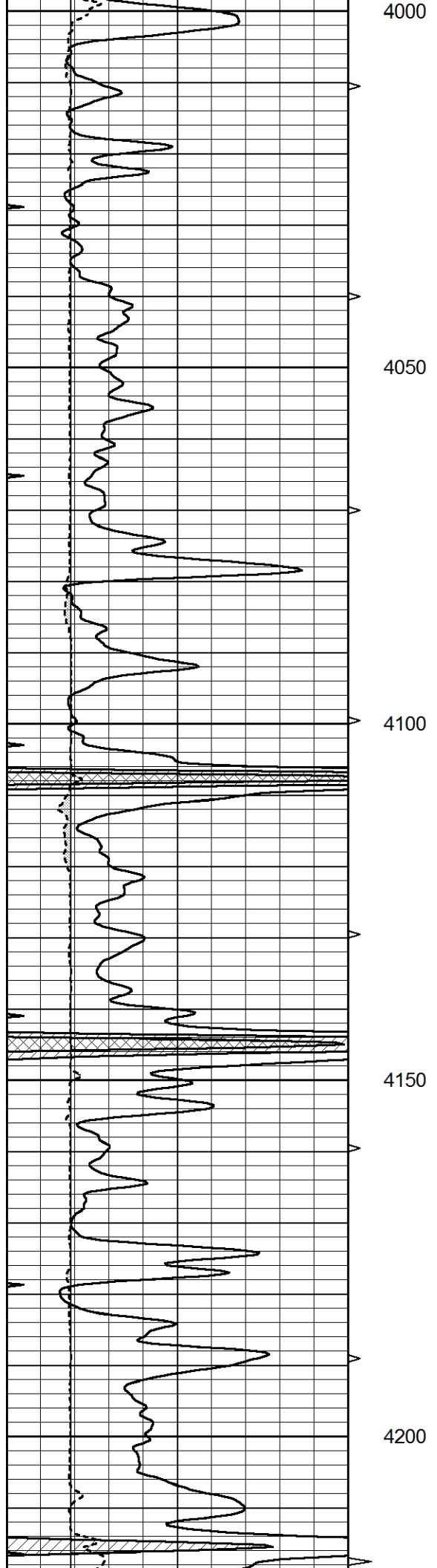
3650

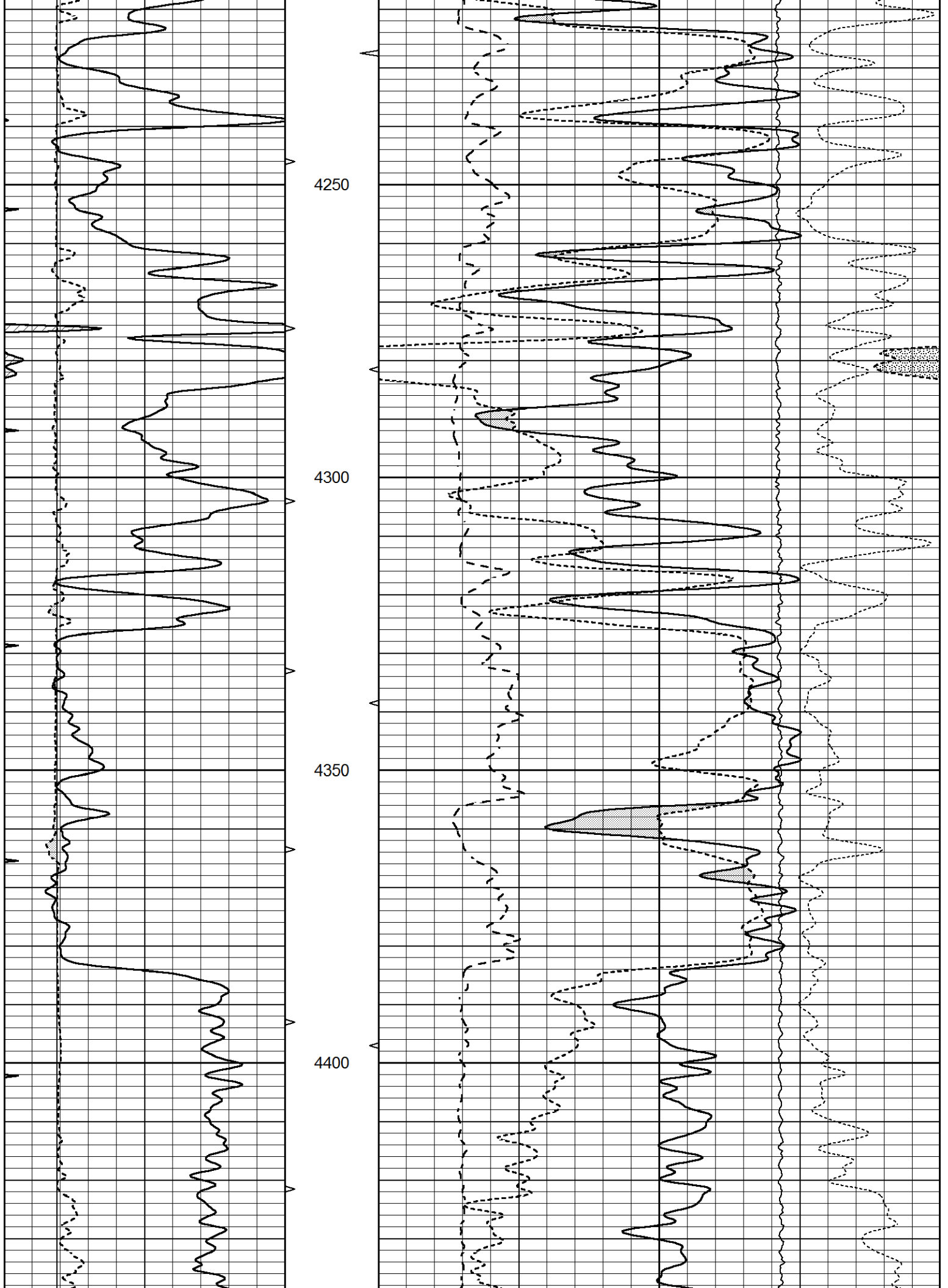
3700

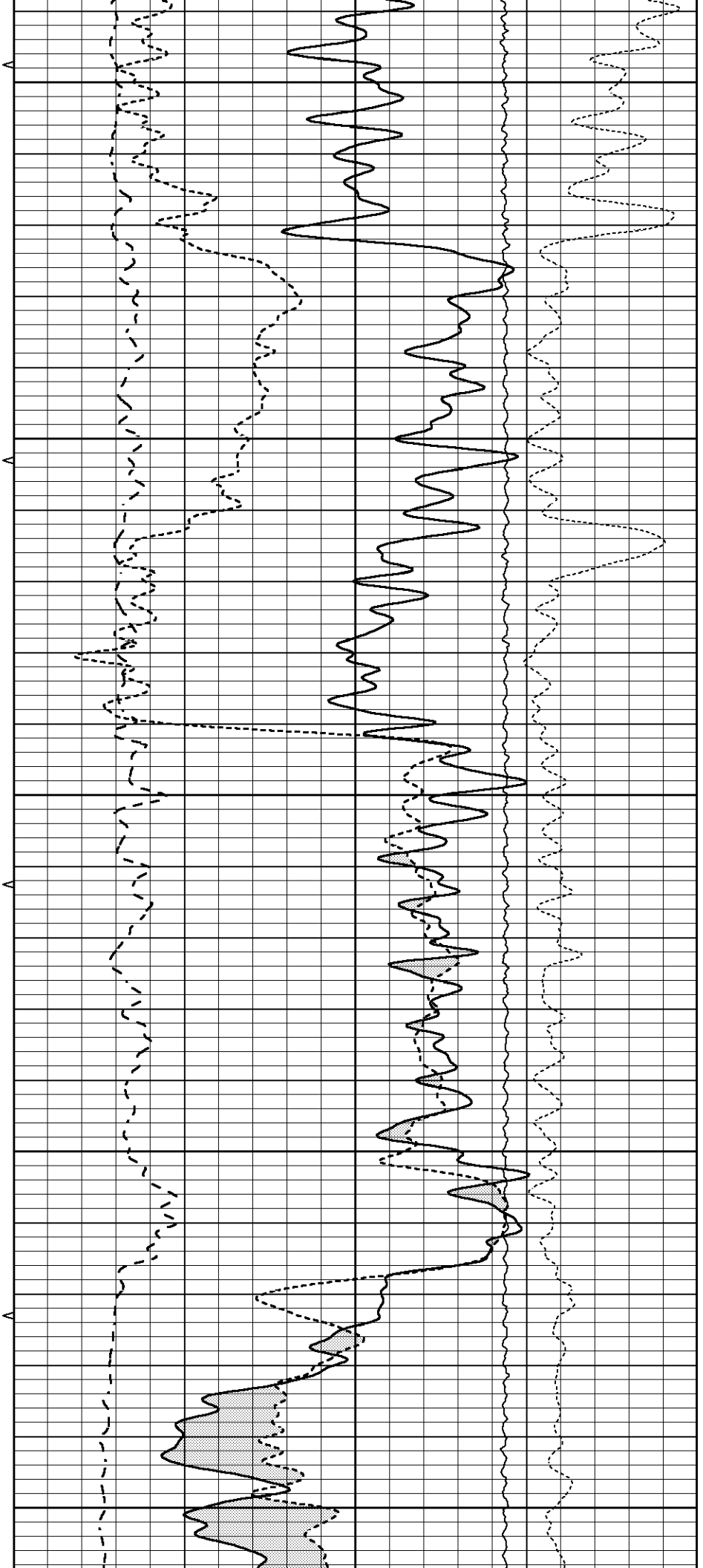
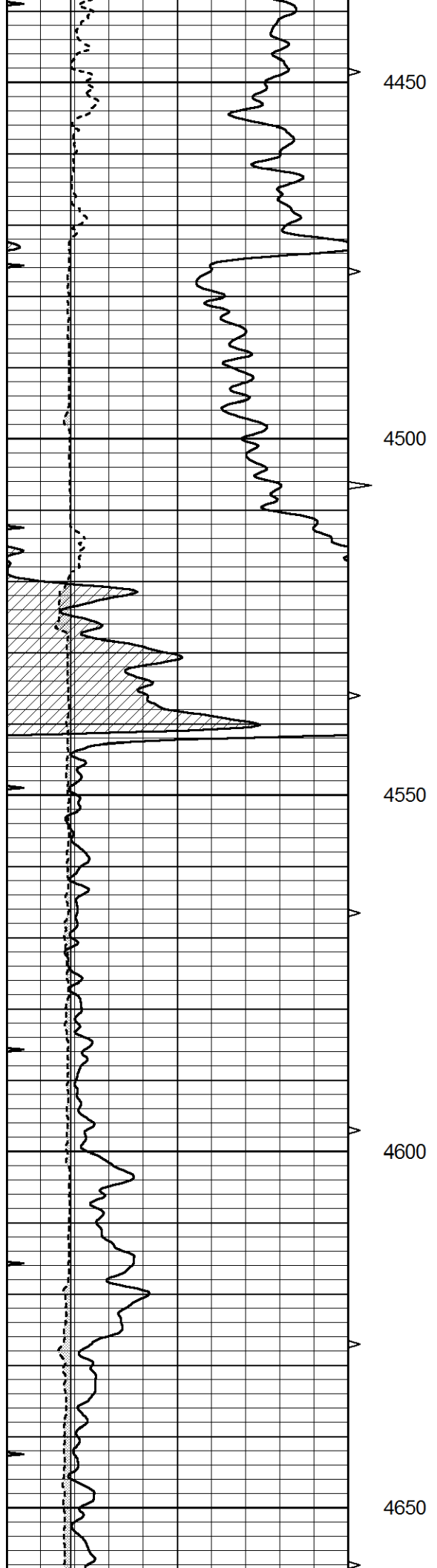
3750

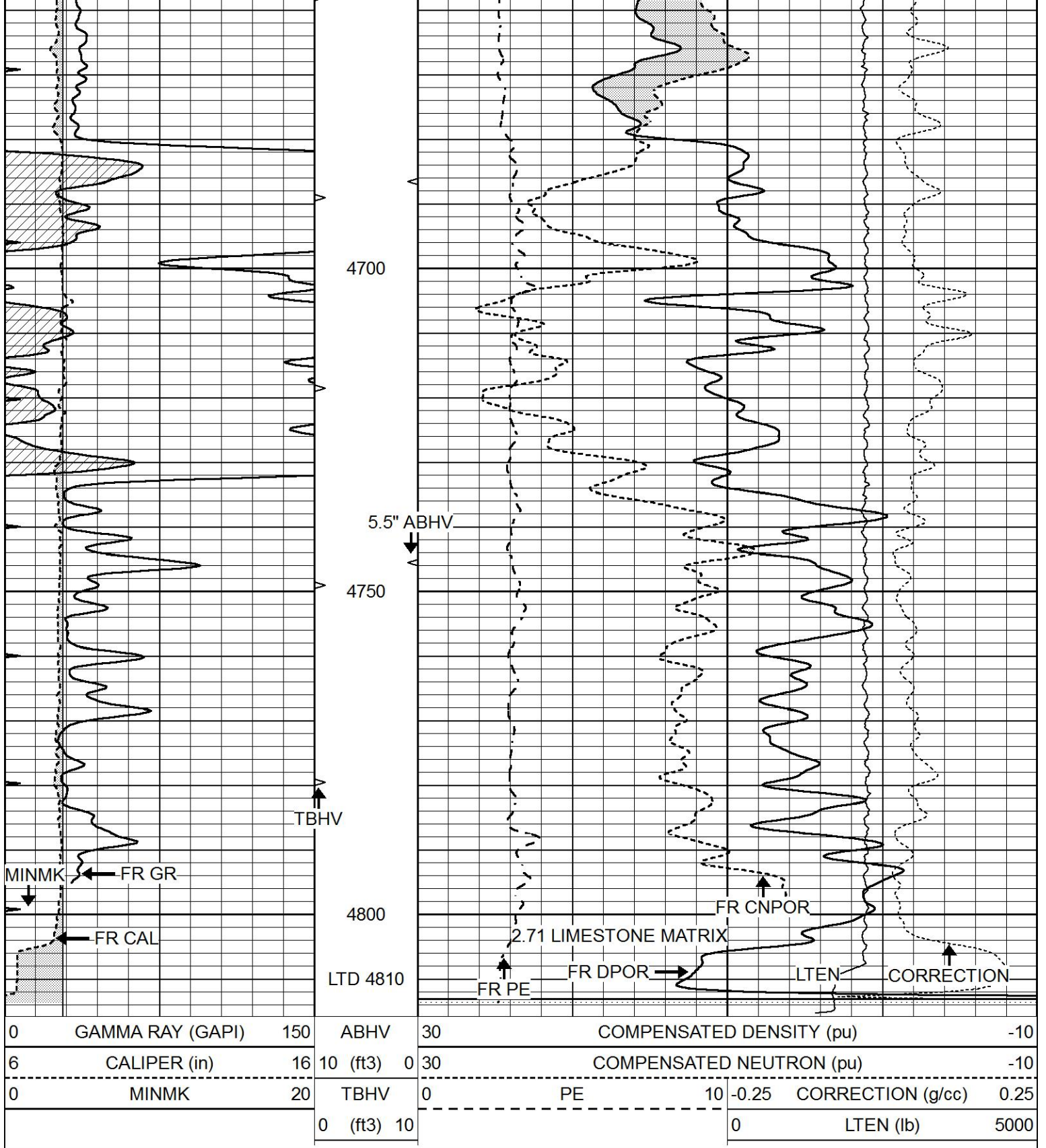








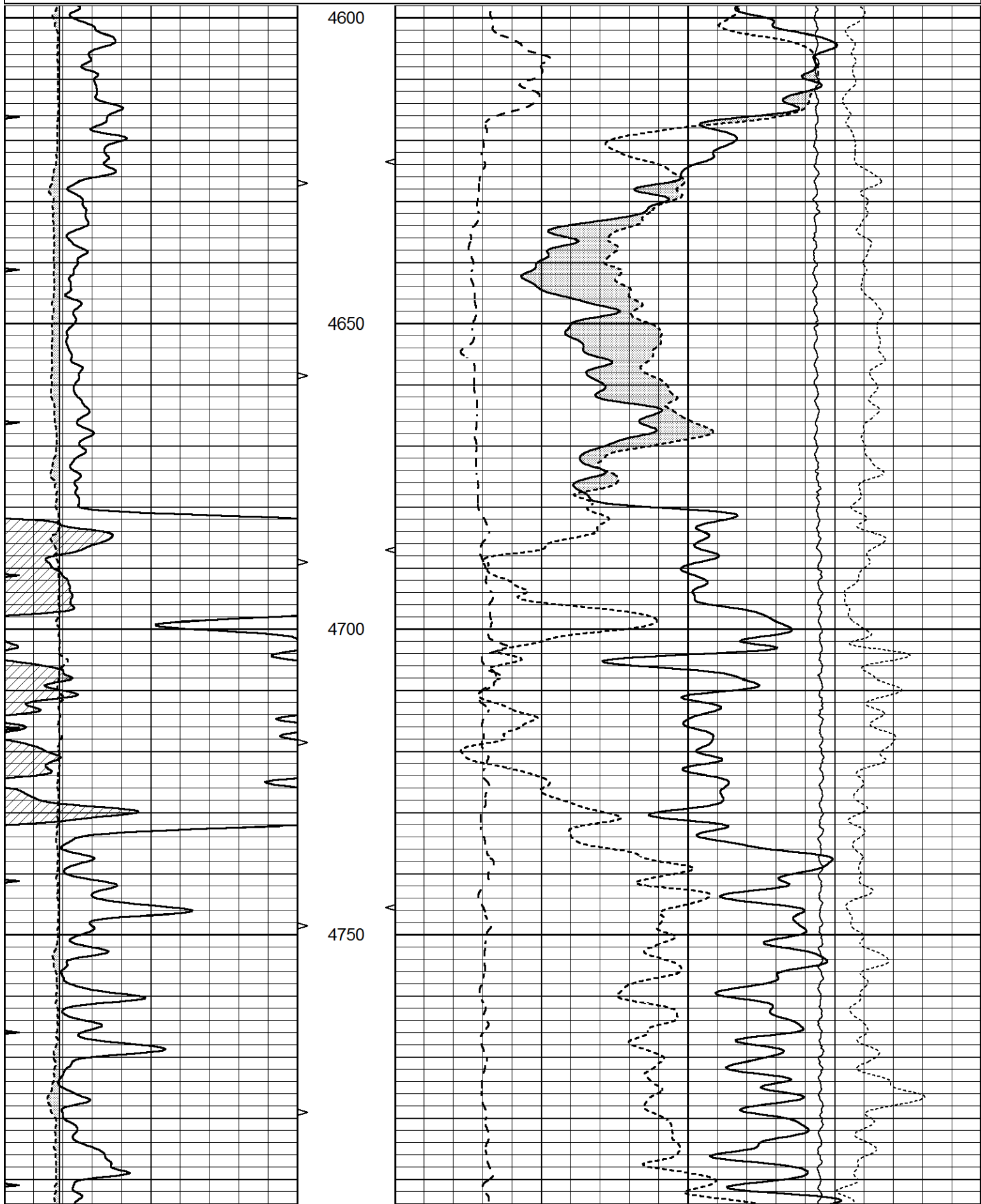


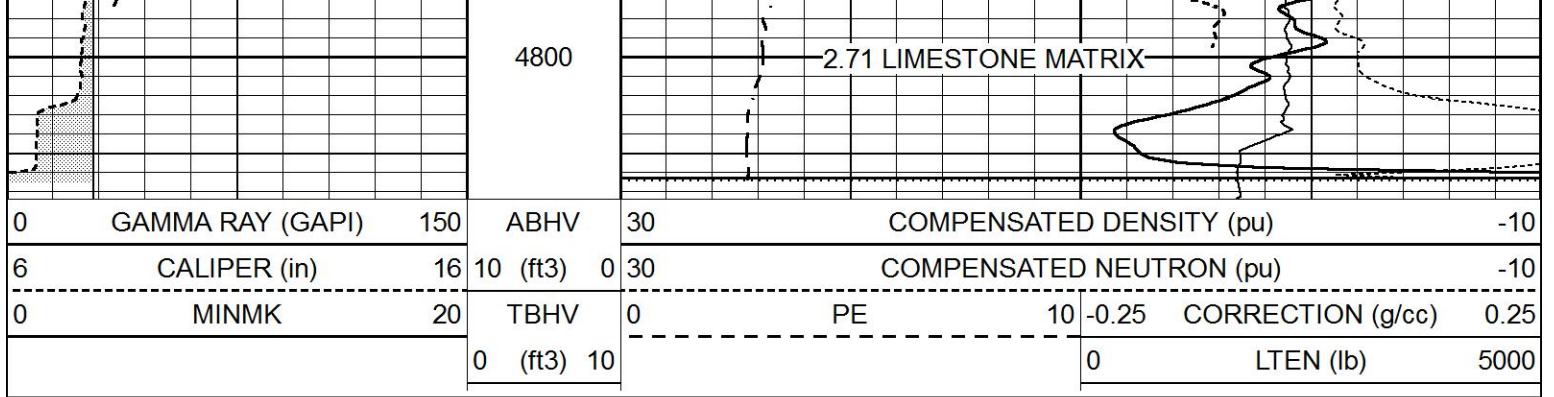


2.71 LIMESTONE REPEAT

Database File 7776pe.db
 Dataset Pathname pass6LSR
 Presentation Format _ldt_neu
 Dataset Creation Sun May 07 19:39:51 2023
 Charted by Depth in Feet scaled 1:240

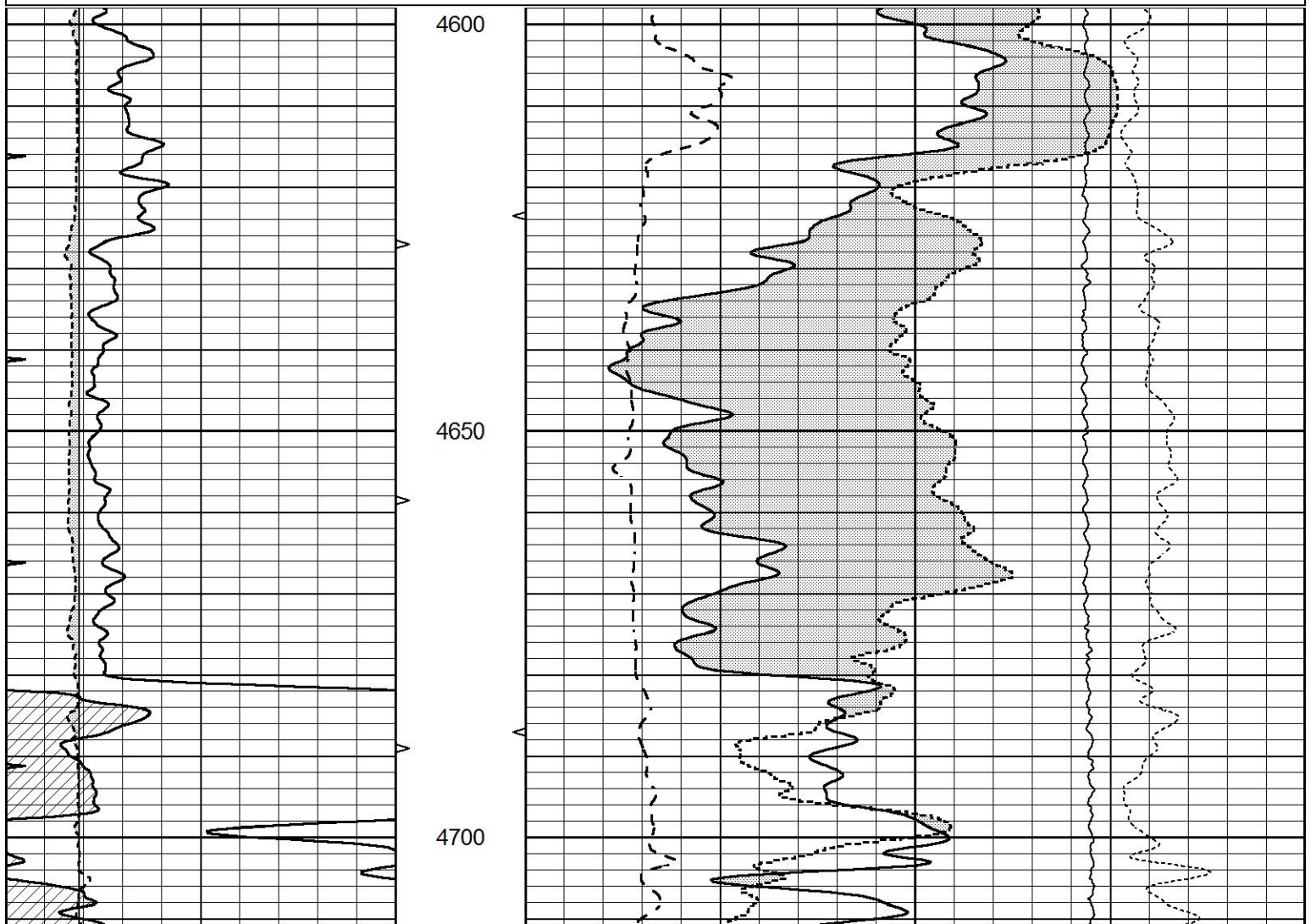
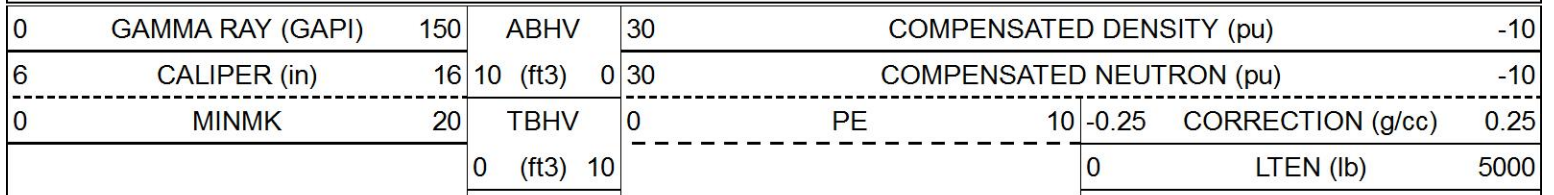
0	GAMMA RAY (GAPI)	150	ABHV	30	COMPENSATED DENSITY (pu)		-10		
6	CALIPER (in)	16	10 (ft3)	0	30	COMPENSATED NEUTRON (pu)		-10	
0	MINMK	20	TBHV	0	PE	10	-0.25	CORRECTION (g/cc)	0.25
			0 (ft3)	10			0	LTEN (lb)	5000

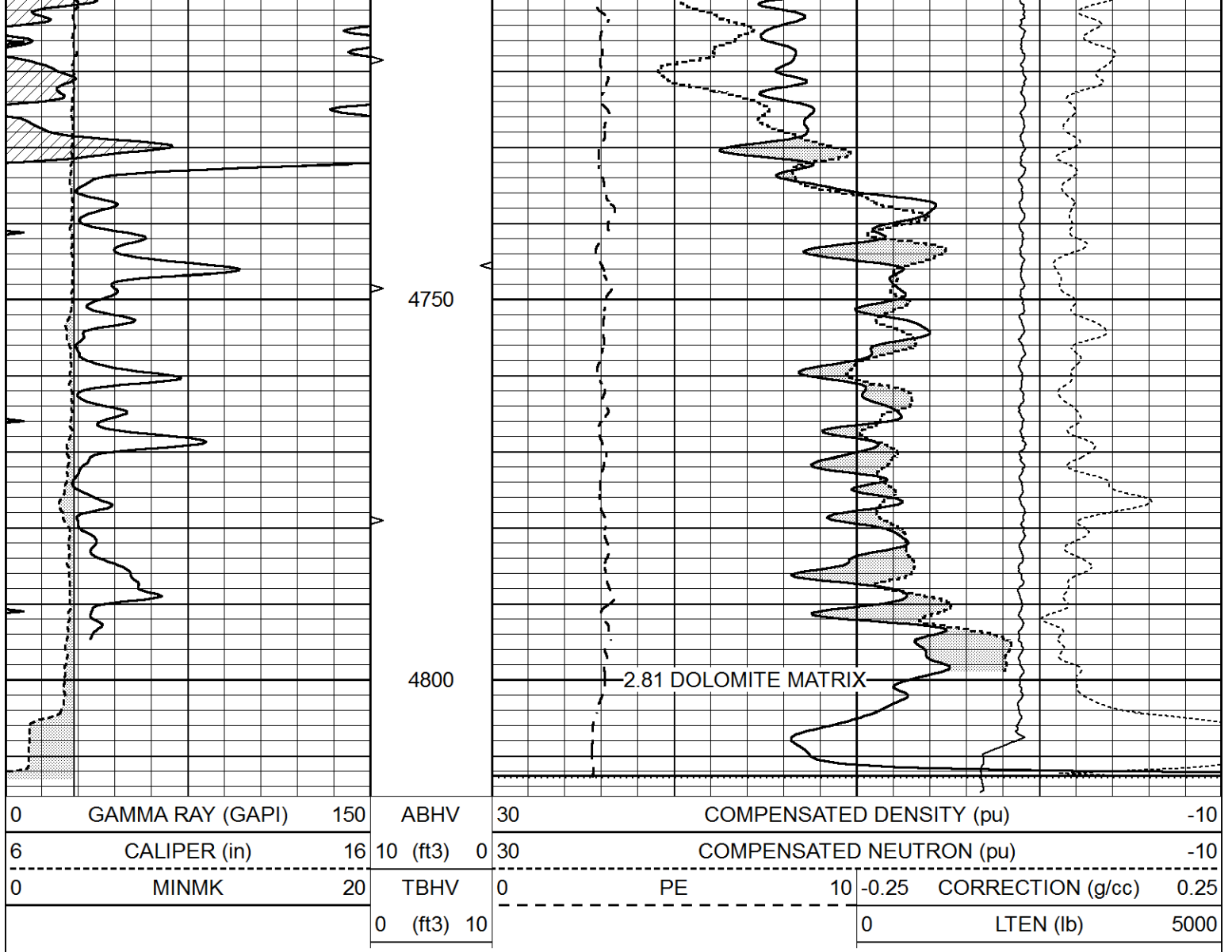




2.81 DOLOMITE REPEAT

Database File 7776pe.db
 Dataset Pathname pass6DOLO
 Presentation Format _ldt_neu
 Dataset Creation Sun May 07 19:42:12 2023
 Charted by Depth in Feet scaled 1:240





Calibration Report

Database File 7776pe.db
 Dataset Pathname pass7PE
 Dataset Creation Sun May 07 19:54:34 2023

Litho Density Calibration Report
 Serial: 002 Model: PRB

Master Calibration

Performed Thu Apr 06 13:30:36 2013

	Background	Magnesium	Aluminum	Aluminum+Fe	
Window 1	729.7	6743.5	2011.4	1795.3	cps
Window 2	674.1	5757.9	1756.3	1602.7	cps
Window 3	540.0	2871.7	1028.2	982.7	cps
Window 4	160.6	165.6	162.6	161.5	cps
Long Space	0.0	5083.7	1082.2	928.6	cps
Short Space	1.3	1183.0	789.7	665.4	cps
Rho		1.7100	2.5900	0.0000	g/cc
Pe		2.0000	2.7500	5.7900	
Rib Angle	: 45.4	Rib Slope	: 1.013	Density/Spine Ratio	: 0.550
Spine Angle	: 75.4	Spine Slope	: 3.828	Spine Intercept	: -18.6

Before Survey Verification

Performed Wed Dec 31 18:00:00 1969

Window 1	0.0	0.0	0.0	0.0	cps
Window 2	0.0	0.0	0.0	0.0	cps
Window 3	0.0	0.0	0.0	0.0	cps
Window 4	0.0	0.0	0.0	0.0	cps
Long Space	0.0	0.0	0.0	0.0	cps
Short Space	0.0	0.0	0.0	0.0	cps
Measured Rho		0.0000	0.0000	0.0000	g/cc
Measured Correction		0.0000	0.0000	0.0000	g/cc
Measured Pe			0.0000	0.0000	

After Survey Verification

Performed Wed Dec 31 18:00:00 1969

Window 1	0.0	0.0	0.0	0.0	cps
Window 2	0.0	0.0	0.0	0.0	cps
Window 3	0.0	0.0	0.0	0.0	cps
Window 4	0.0	0.0	0.0	0.0	cps
Long Space	0.0	0.0	0.0	0.0	cps
Short Space	0.0	0.0	0.0	0.0	cps
Measured Rho		0.0000	0.0000	0.0000	g/cc
Measured Correction		0.0000	0.0000	0.0000	g/cc
Measured Pe			0.0000	0.0000	

Compensated Neutron Calibration Report

Serial Number: 080621PMC
Tool Model: NABORS

PRE-SURVEY VERIFICATION

Detector	Readings	Measured	Target
Short Space	cps		
Long Space	cps	pu	pu

POST-SURVEY VERIFICATION

Detector	Readings	Measured	Target
Short Space	cps		
Long Space	cps	pu	pu

Gamma Ray Calibration Report

Serial Number: 46001
Tool Model: Probe1
Performed: Thu Apr 20 09:55:57 2023

Calibrator Value: 1.0 GAPI
Background Reading: 0.0 cps
Calibrator Reading: 1.0 cps
Sensitivity: 0.4300 GAPI/cps