



DUAL INDUCTION LOG

Company INDIAN OIL COMPANY, INC.

Well PEACE PIPE #1

Field UNNAMED

County BARBER State KANSAS

Location: API #: 15-007-24469-0000

SEC 26 TWP 30S RGE 12W

Permanent Datum GROUND LEVEL Elevation 1699
Log Measured From KELLY BUSHING 12' A.G.L.
Drilling Measured From KELLY BUSHING

Other Services
CDL/CNL/PE
MEL/SON

Elevation

K.B. 1711
D.F. 1709
G.L. 1699

Date	5/7/23
Run Number	ONE
Depth Driller	4810
Depth Logger	4810
Bottom Logged Interval	4808
Top Log Interval	00
Casing Driller	8 5/8" @ 225
Casing Logger	225
Bit Size	7 7/8
Type Fluid in Hole	CHEMICAL MUD
Density / Viscosity	9.4+/53
pH / Fluid Loss	10.5/8.8
Source of Sample	FLOWLINE
Rm @ Meas. Temp	.700 @ 78F
Rmf @ Meas. Temp	.525 @ 78F
Rmc @ Meas. Temp	.840 @ 78F
Source of Rmf / Rmc	MEASUREMENT
Rm @ BHT	.444 @ 123F
Time Circulation Stopped	2 HOURS
Time Logger on Bottom	4:00 P.M.
Maximum Recorded Temperature	123F
Equipment Number	3802
Location	HAYS, KANSAS
Recorded By	COLE ROBBEN
Witnessed By	AARON YOUNG

<<< Fold Here >>>

All interpretations are opinions based on inferences from electrical or other measurements and we cannot and do not guarantee the accuracy or correctness of any interpretation, and we shall not, except in the case of gross or willful negligence on our part, be liable or responsible for any loss, costs, damages, or expenses incurred or sustained by anyone resulting from any interpretation made by any of our officers, agents or employees. These interpretations are also subject to our general terms and conditions set out in our current Price Schedule.

Comments

THANK YOU FOR USING ELI WIRELINE SERVICES, HAYS, KS. (785) 628-6395

DIRECTIONS:

MEDICINE LODGE NORTH ON HIGHWAY 281 TO NE RESORT ROAD, NORTH 2 MILES, WEST ON ARROWHEAD ROAD 1 MILE, EAST INTO

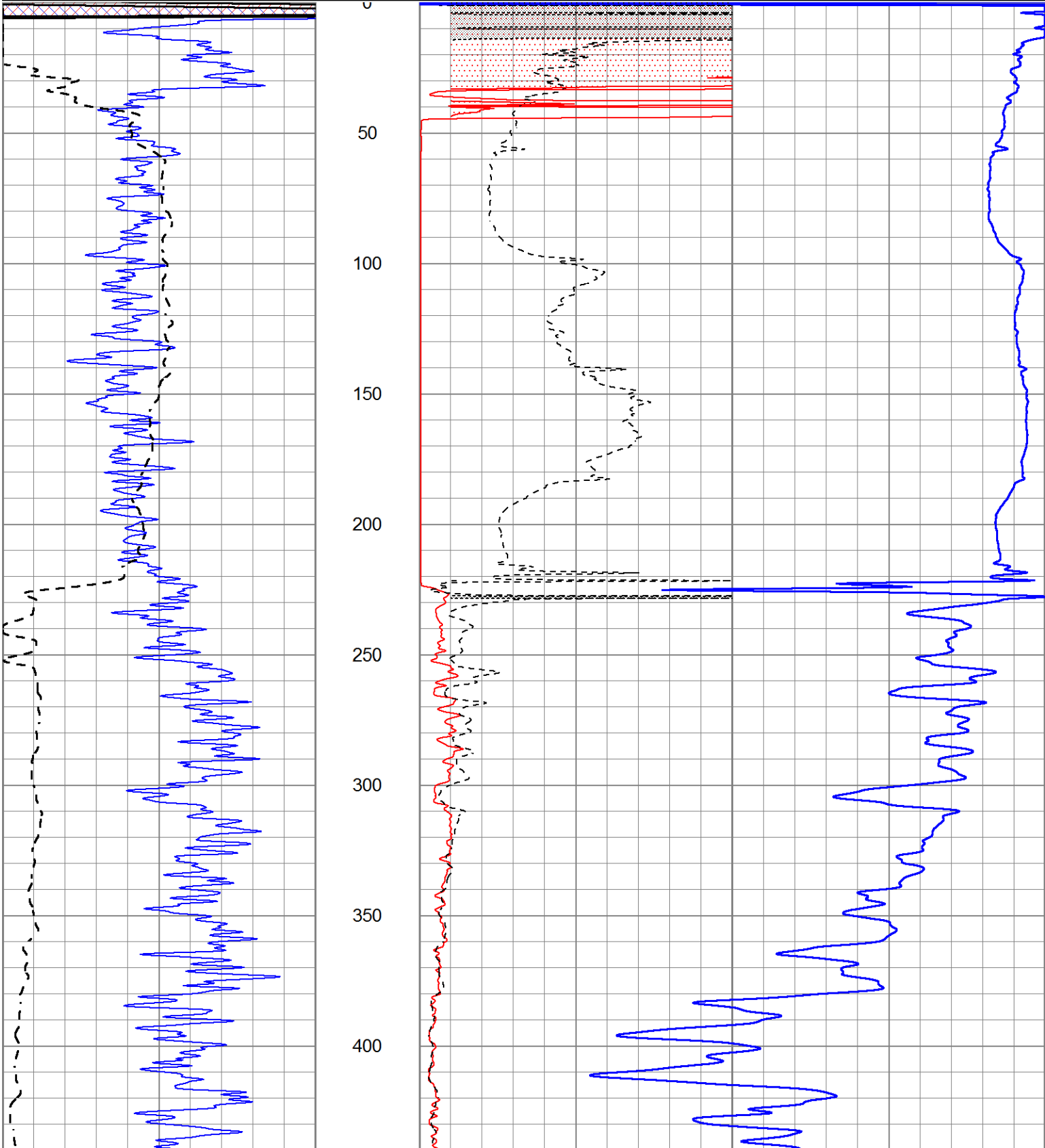


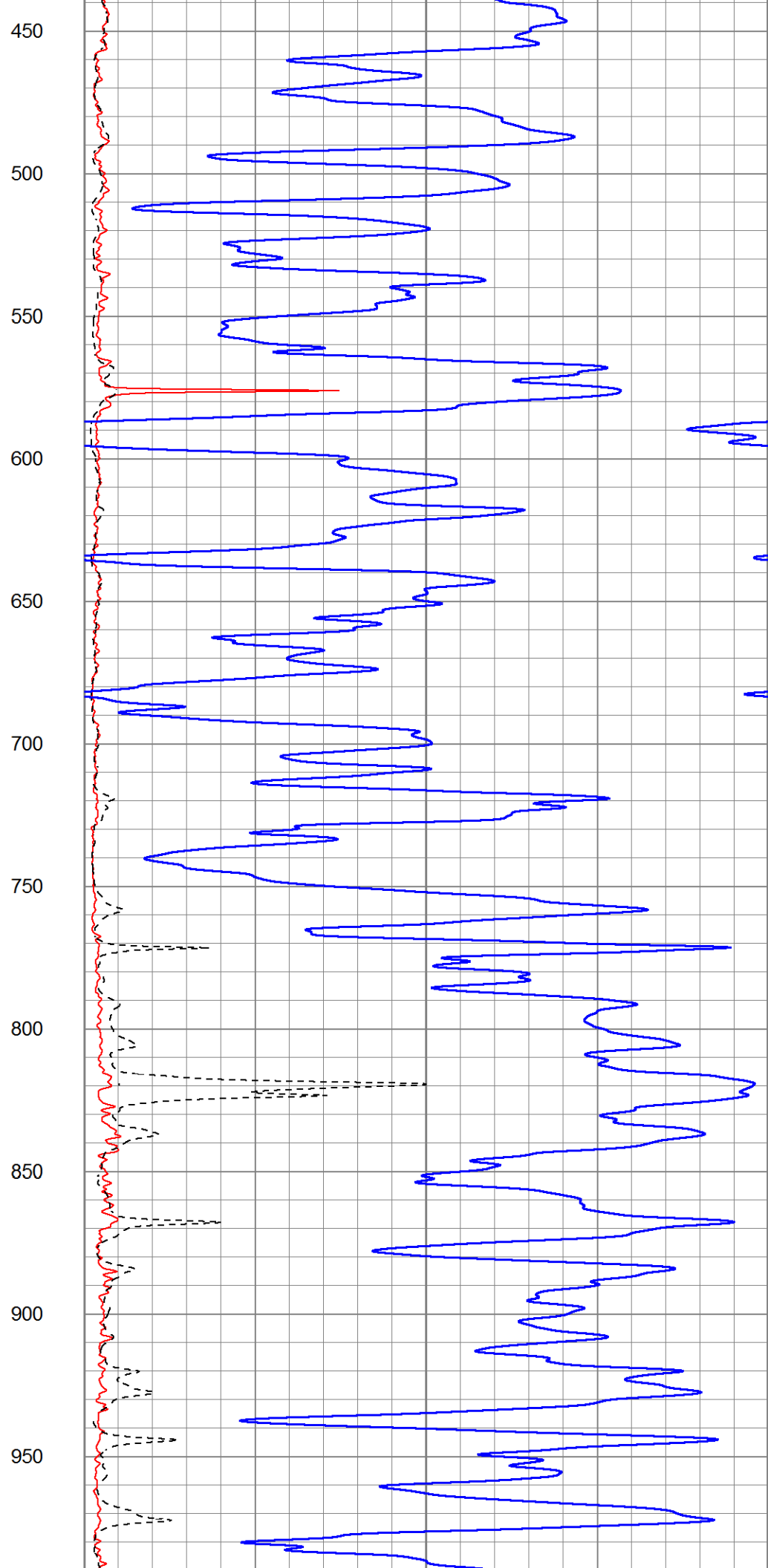
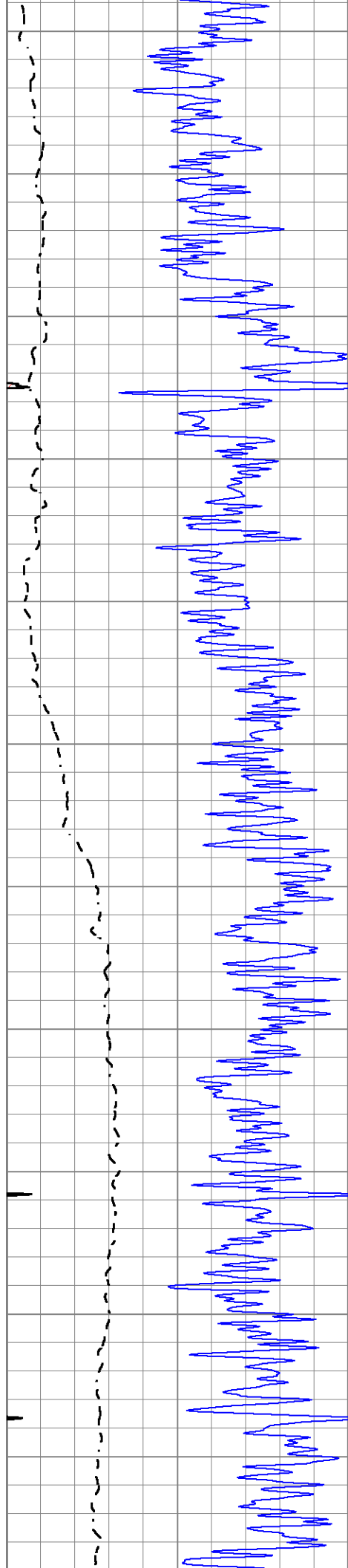
MAIN SECTION

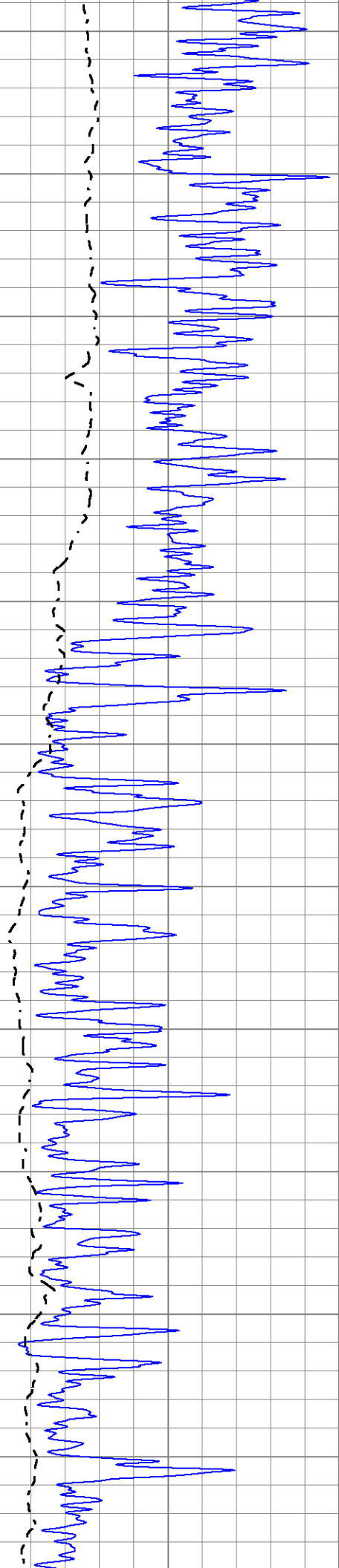
Database File 7776pe.db
 Dataset Pathname pass4M
 Presentation Format _dil2
 Dataset Creation Sun May 07 18:37:22 2023
 Charted by Depth in Feet scaled 1:600

0 Gamma Ray (GAPI) 150
 -100 SP (mV) 100

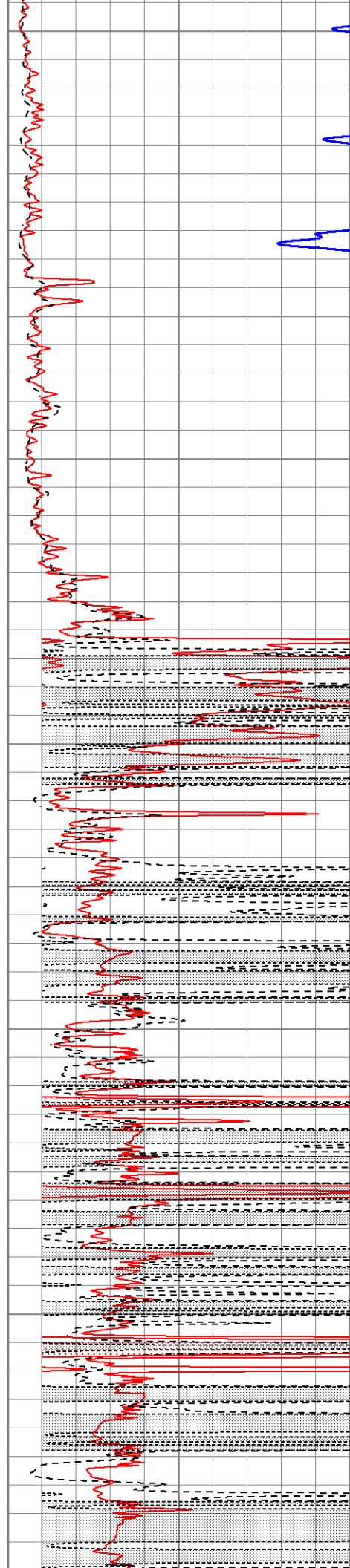
1000 CILD (mmho/m) 0
 0 RLL3 (Ohm-m) 50
 0 Deep Induction (Ohm-m) 50
 50 RILD X10 (Ohm-m) 500
 50 RLL3 X10 (Ohm-m) 500

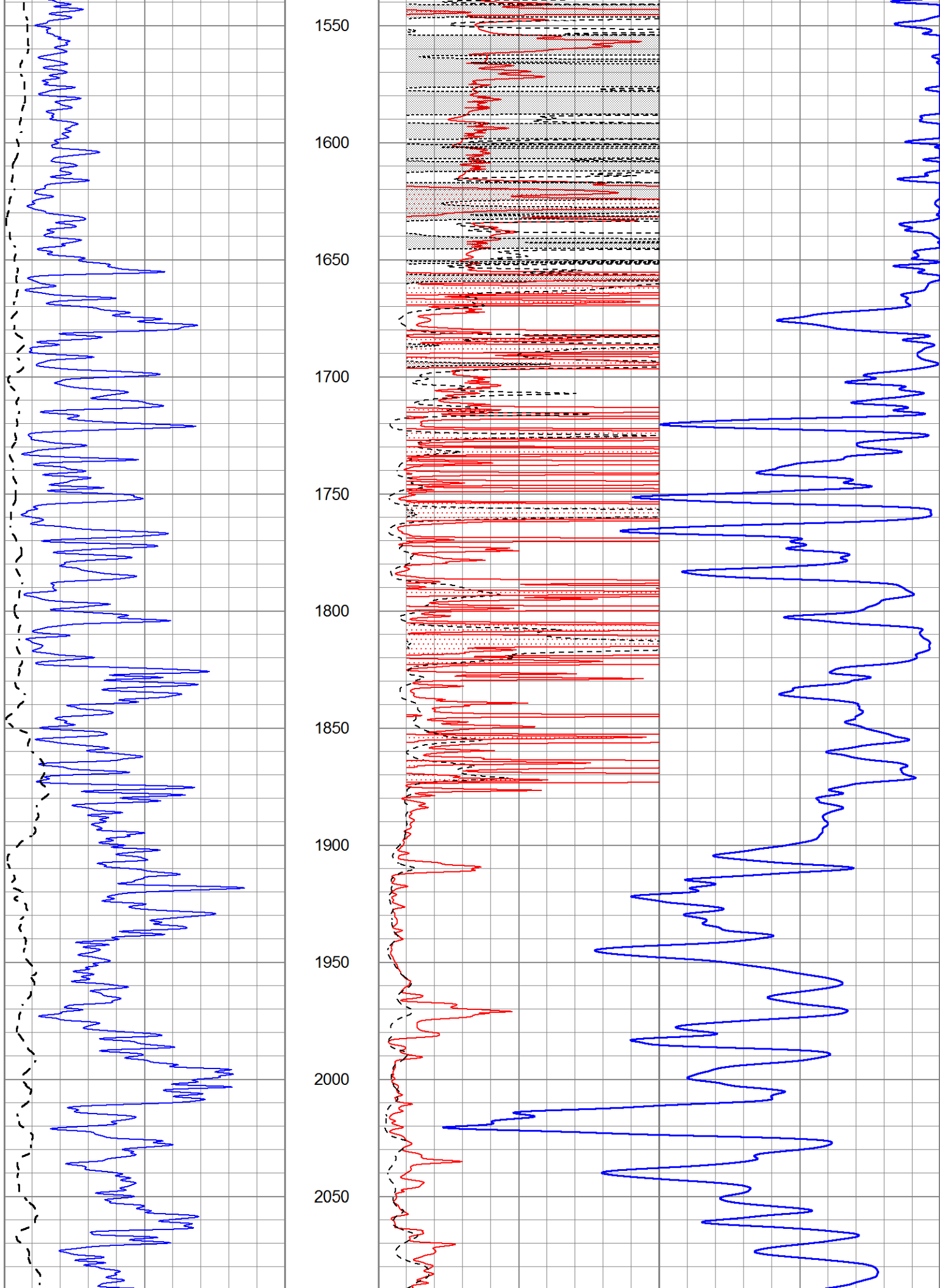


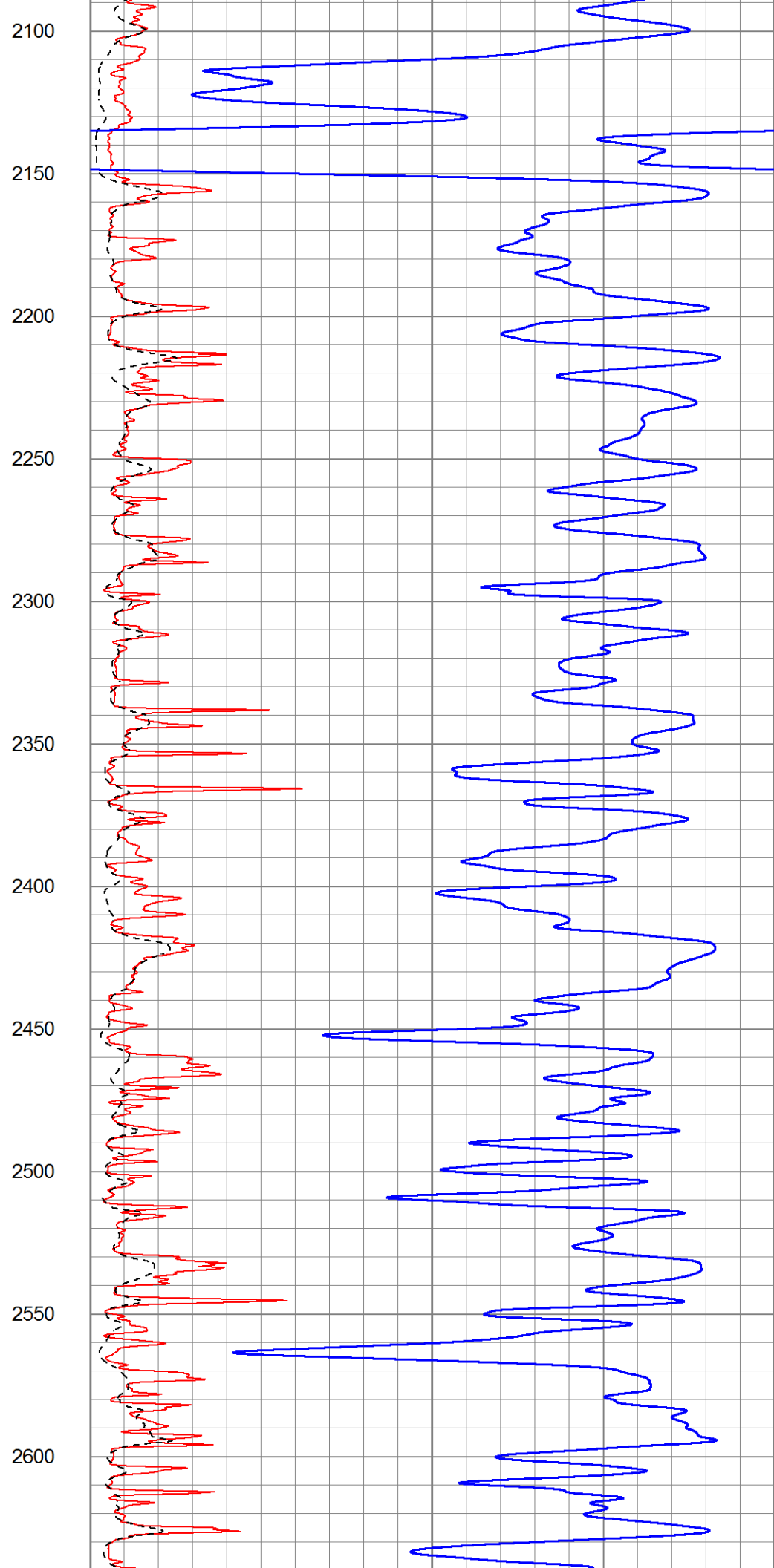
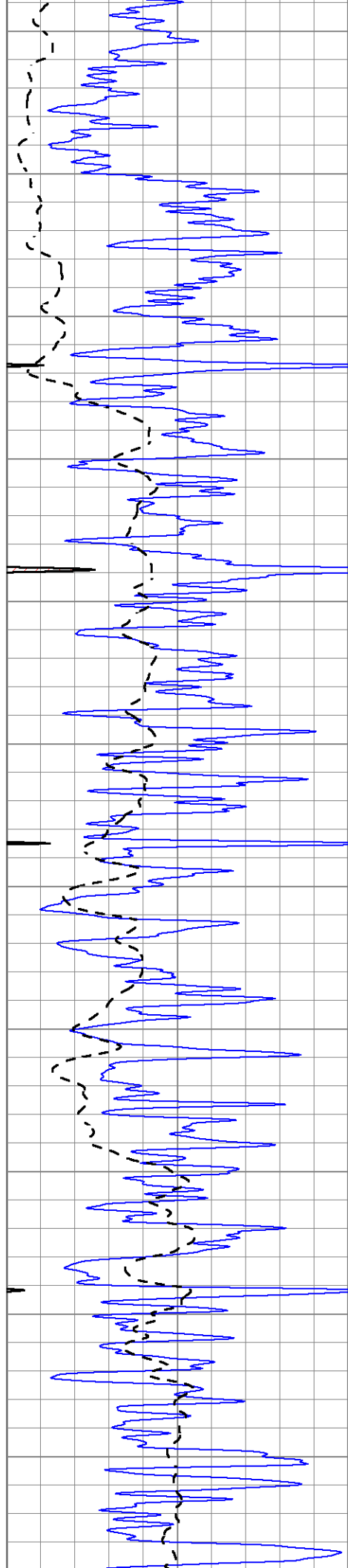


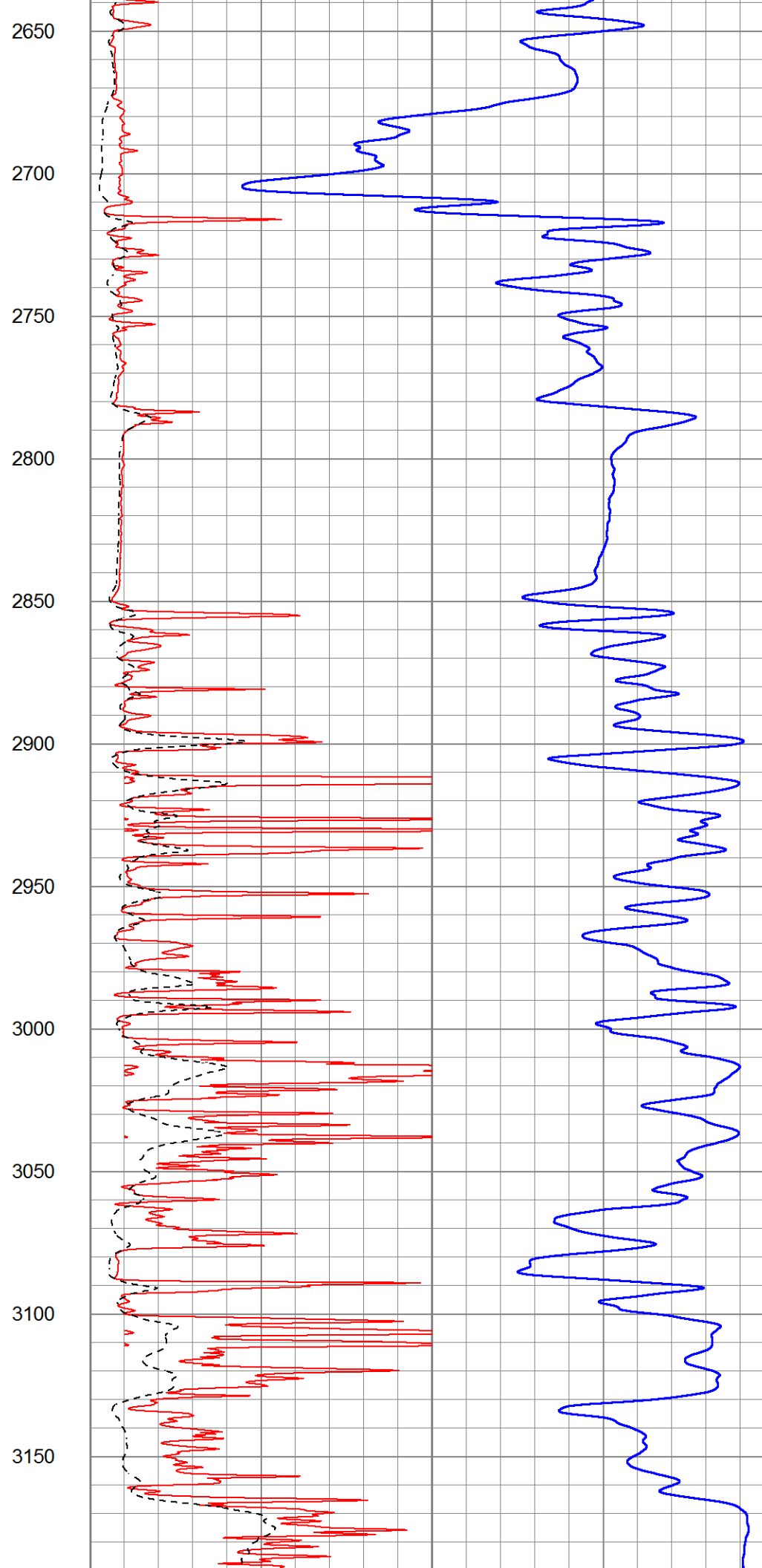
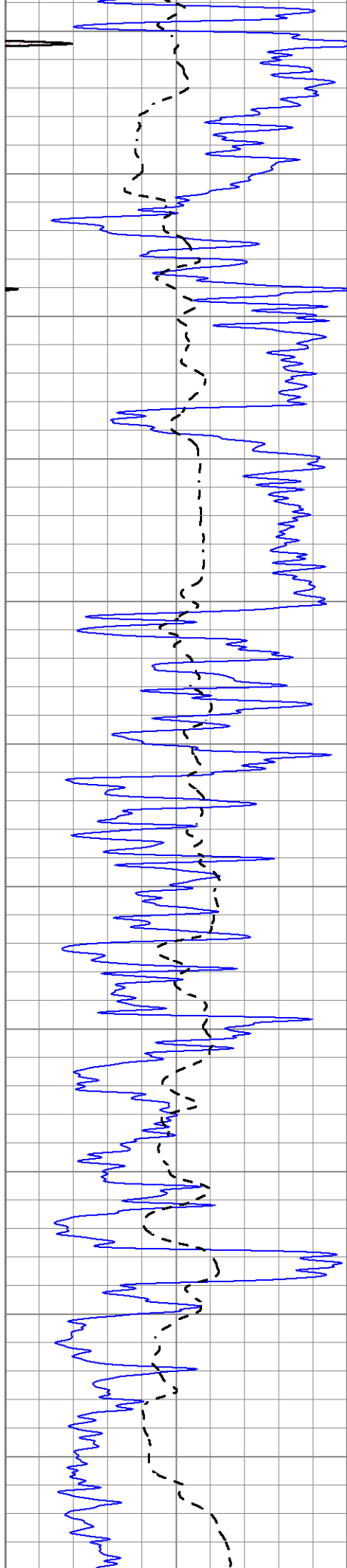


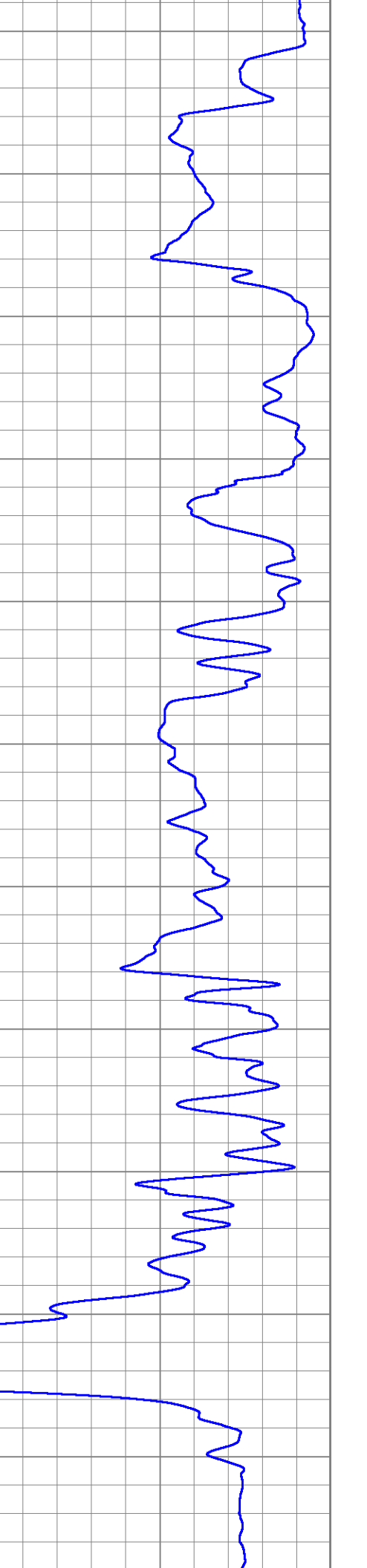
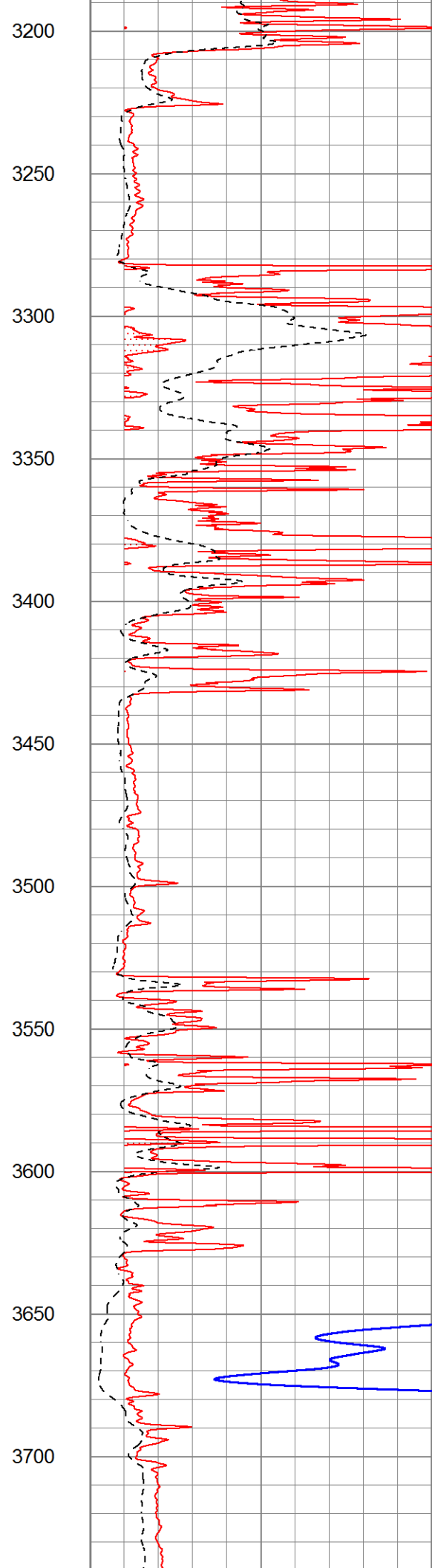
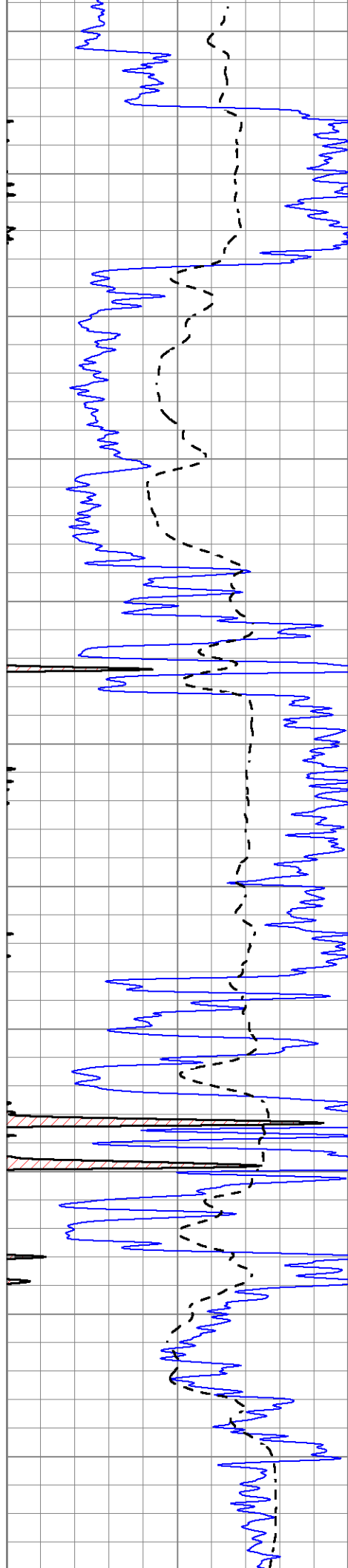
1000
1050
1100
1150
1200
1250
1300
1350
1400
1450
1500

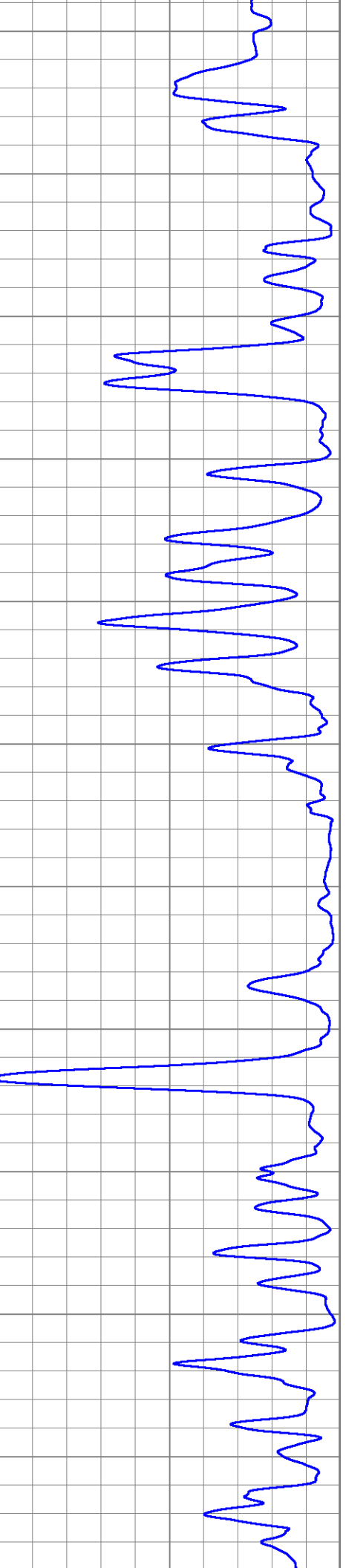
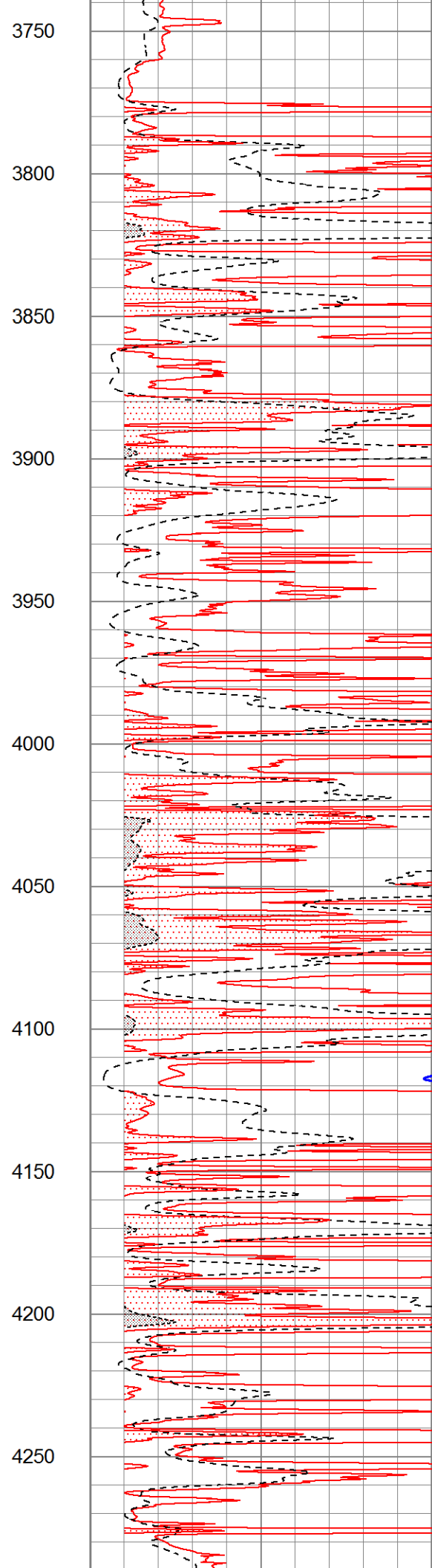
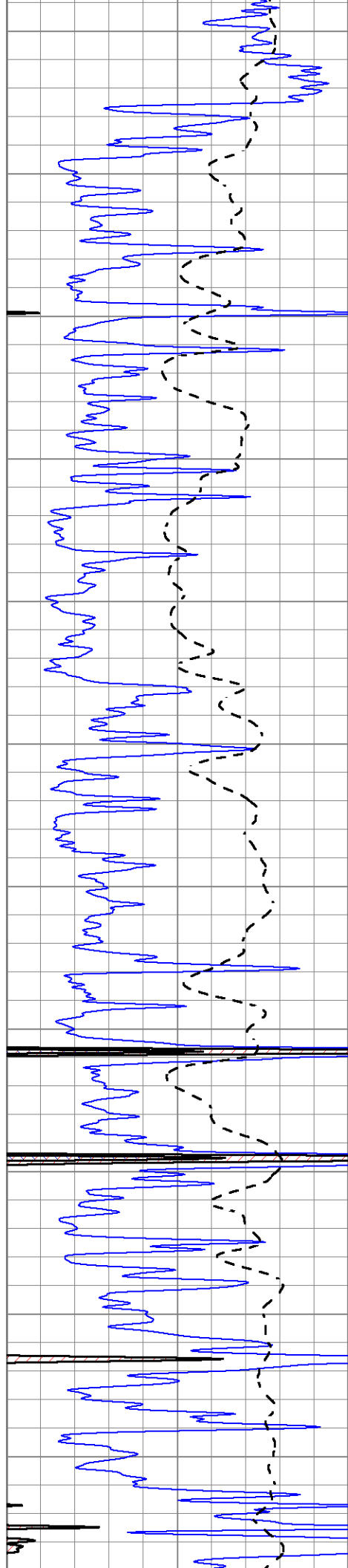


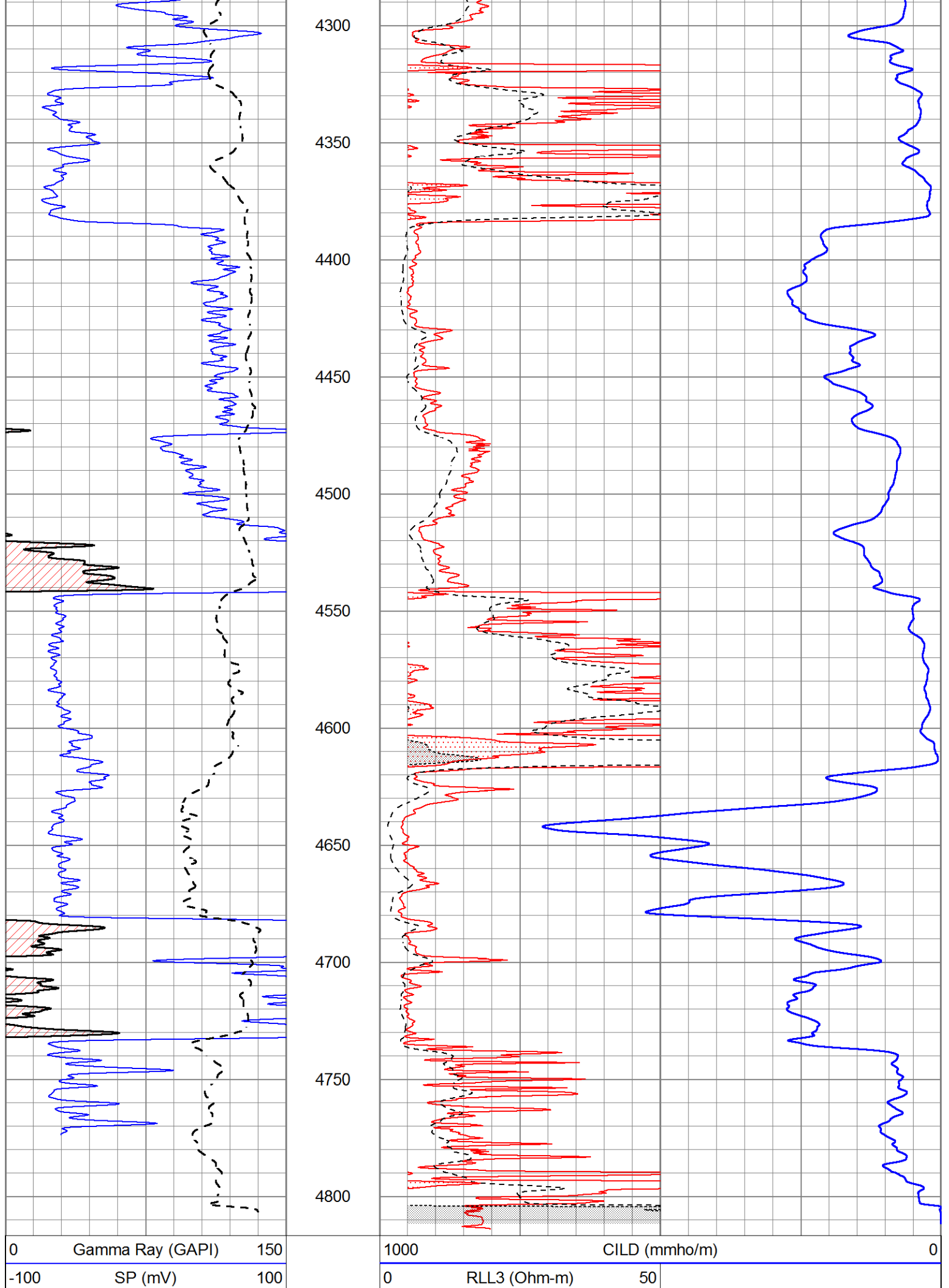












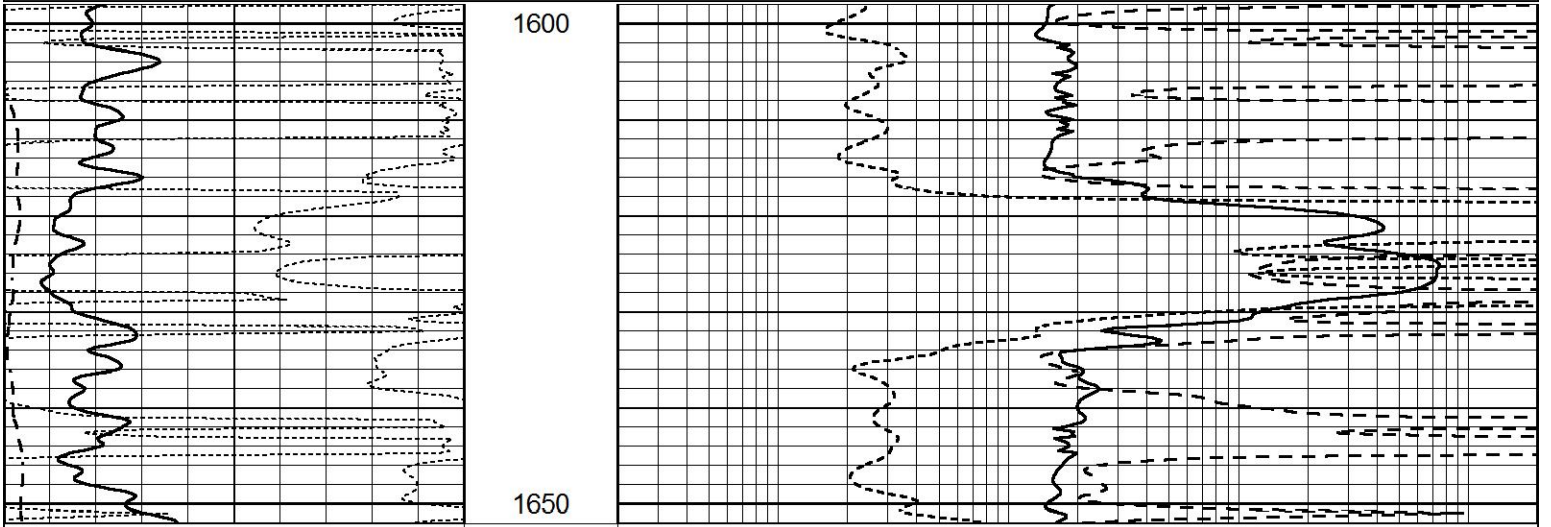
0	Deep Induction (Ohm-m)	50
50	RILD X10 (Ohm-m)	500
50	RLL3 X10 (Ohm-m)	500



ANHYDRITE

Database File 7776pe.db
 Dataset Pathname pass4A
 Presentation Format _dil
 Dataset Creation Sun May 07 20:15:25 2023
 Charted by Depth in Feet scaled 1:240

0	GAMMA RAY (GAPI)	150	0.2	SHALLOW GUARD (Ohm-m)	2000
-100	SP (mV)	100	0.2	MEDIUM INDUCTION (Ohm-m)	2000
-250	Rxo/Rt	50	0.2	DEEP INDUCTION (Ohm-m)	2000



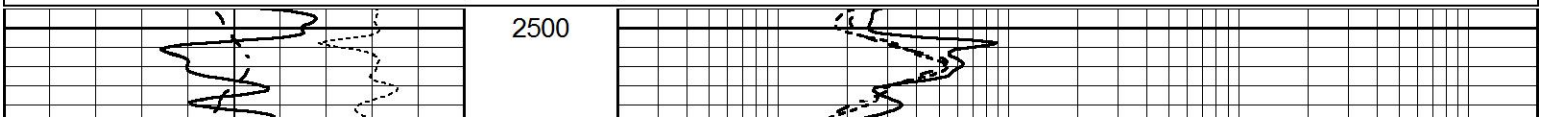
0	GAMMA RAY (GAPI)	150	0.2	SHALLOW GUARD (Ohm-m)	2000
-100	SP (mV)	100	0.2	MEDIUM INDUCTION (Ohm-m)	2000
-250	Rxo/Rt	50	0.2	DEEP INDUCTION (Ohm-m)	2000

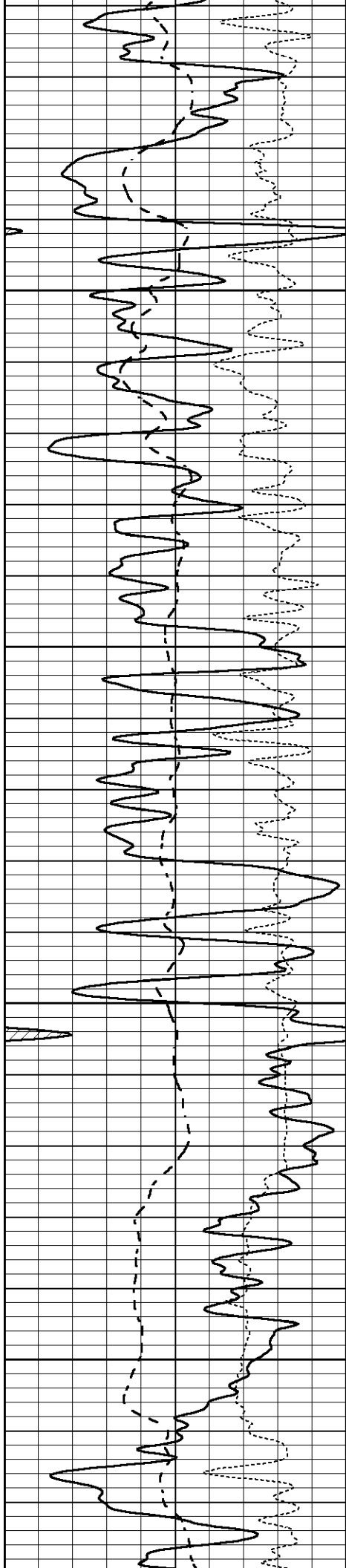


MAIN SECTION

Database File 7776pe.db
 Dataset Pathname pass4M
 Presentation Format _dil
 Dataset Creation Sun May 07 18:37:22 2023
 Charted by Depth in Feet scaled 1:240

0	GAMMA RAY (GAPI)	150	0.2	SHALLOW GUARD (Ohm-m)	2000
-100	SP (mV)	100	0.2	MEDIUM INDUCTION (Ohm-m)	2000
-250	Rxo/Rt	50	0.2	DEEP INDUCTION (Ohm-m)	2000



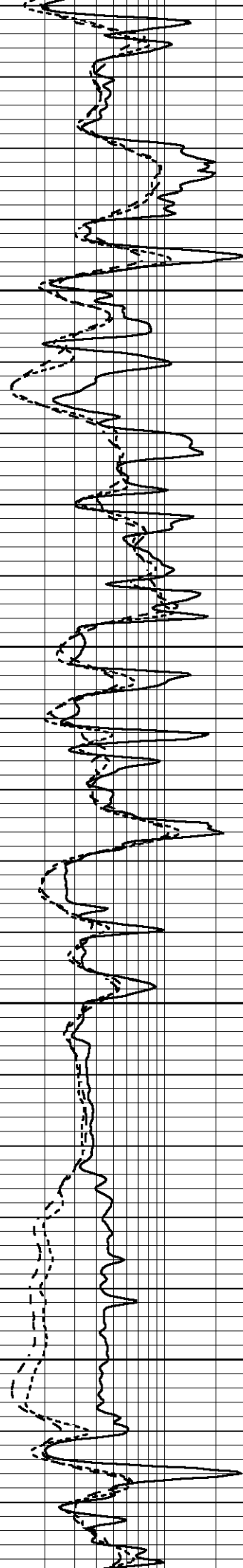


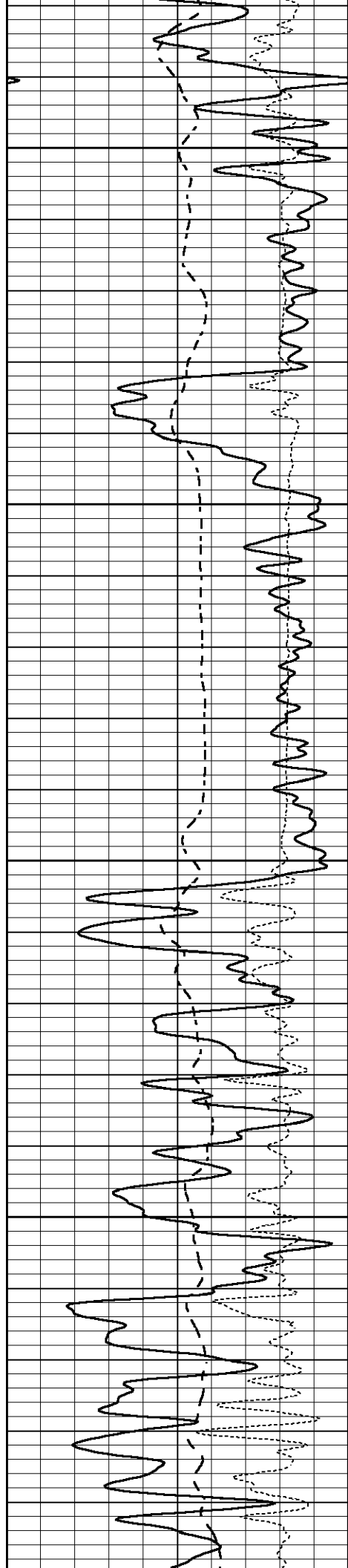
2550

2600

2650

2700





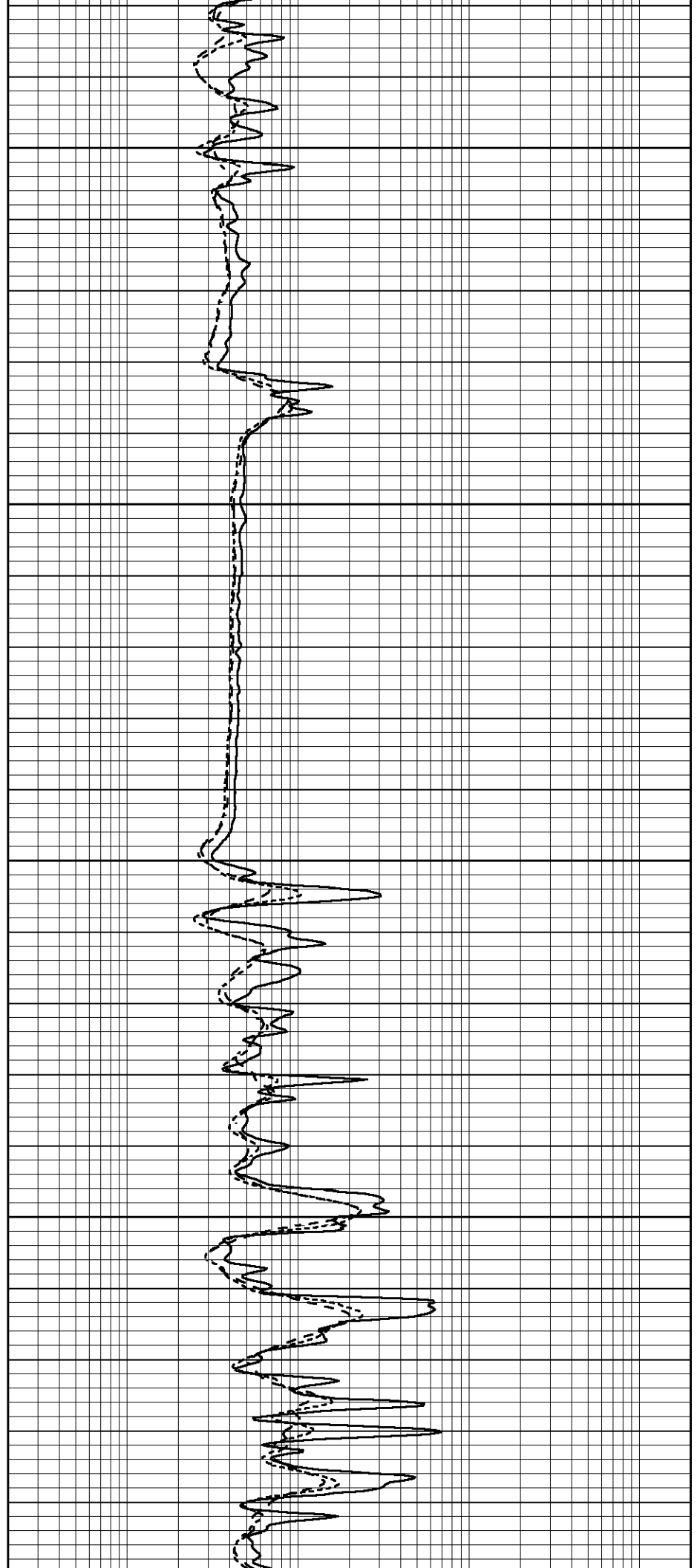
2750

2800

2850

2900

3000



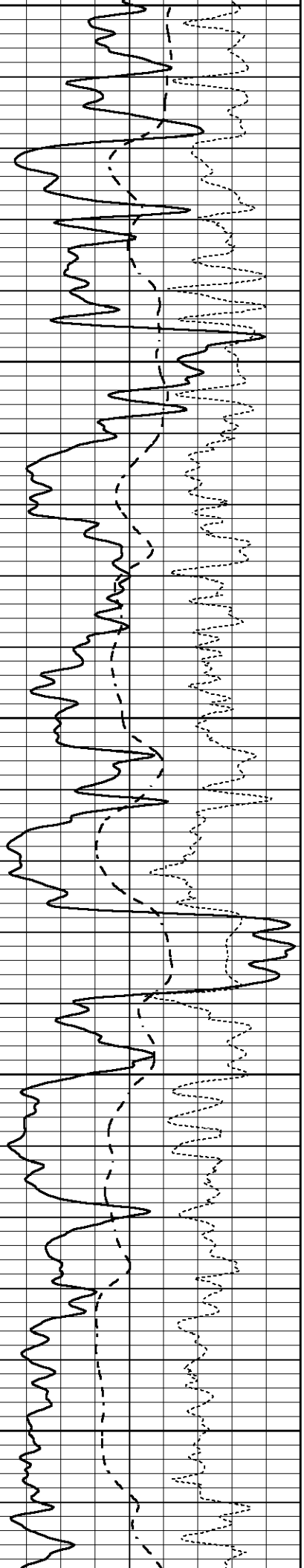
2950

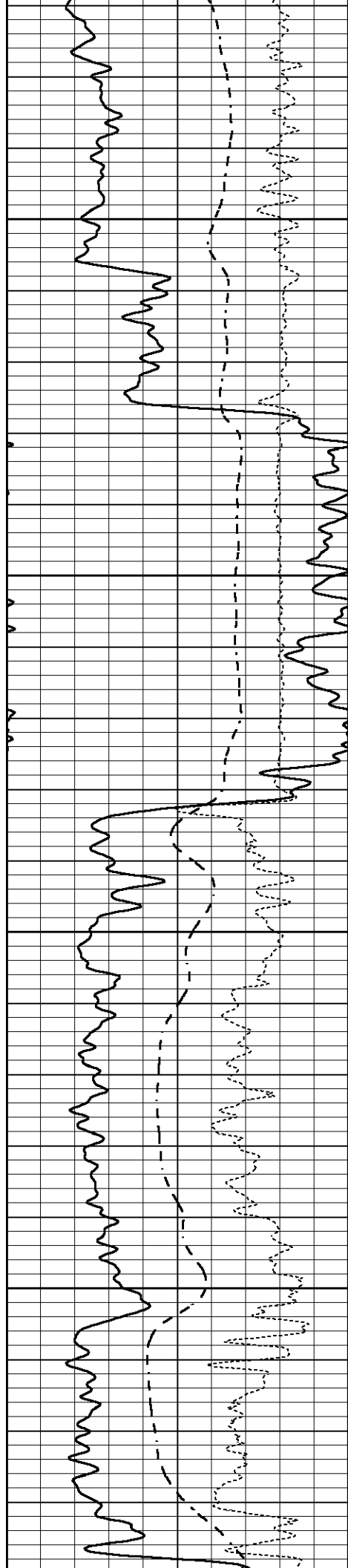
3000

3050

3100

3150



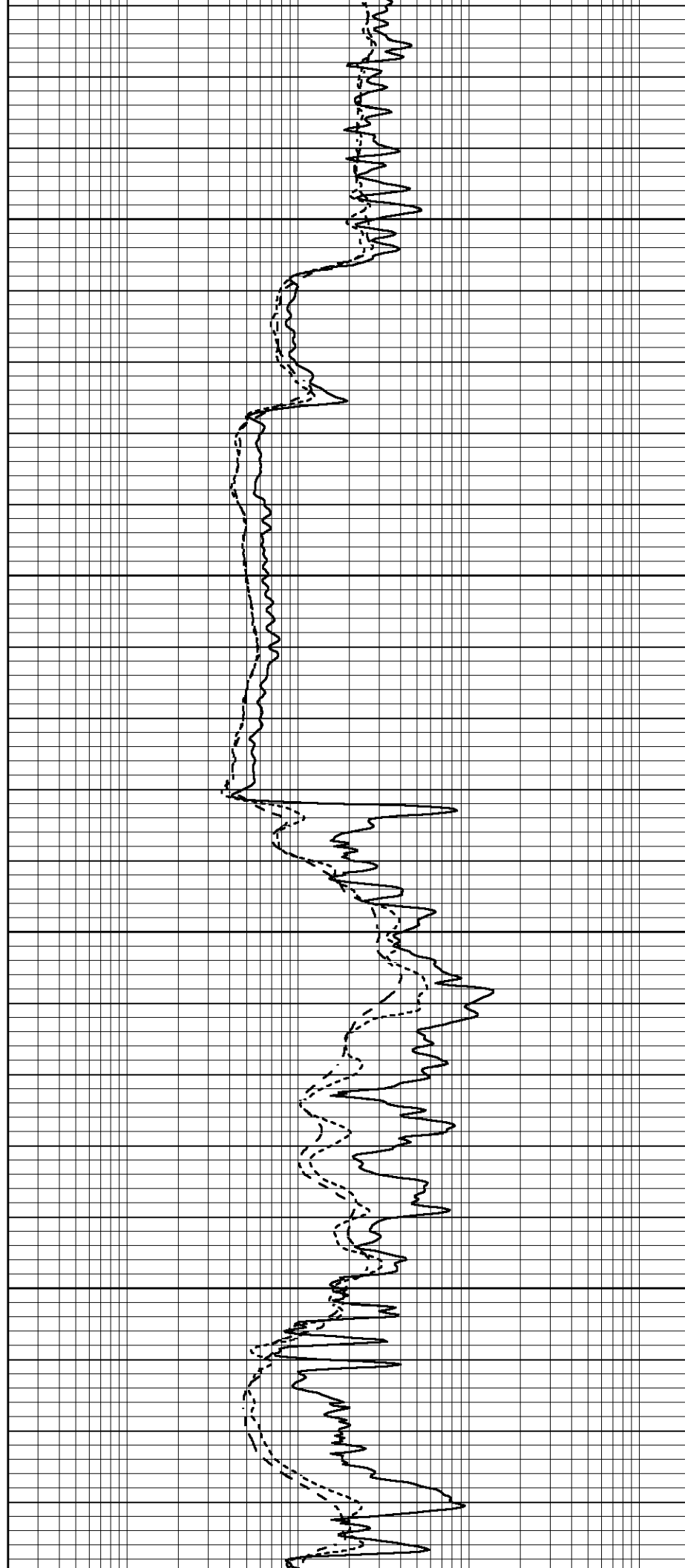


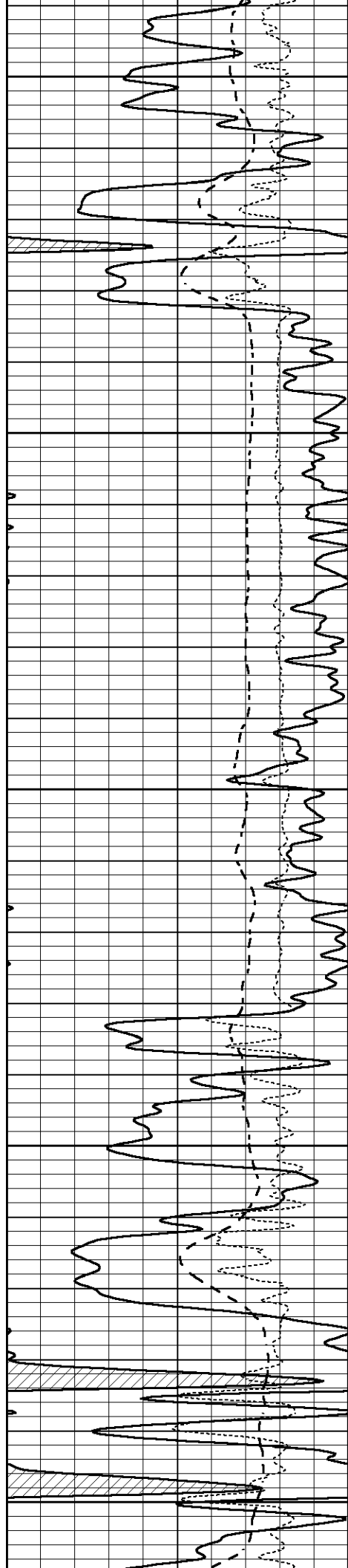
3200

3250

3300

3350





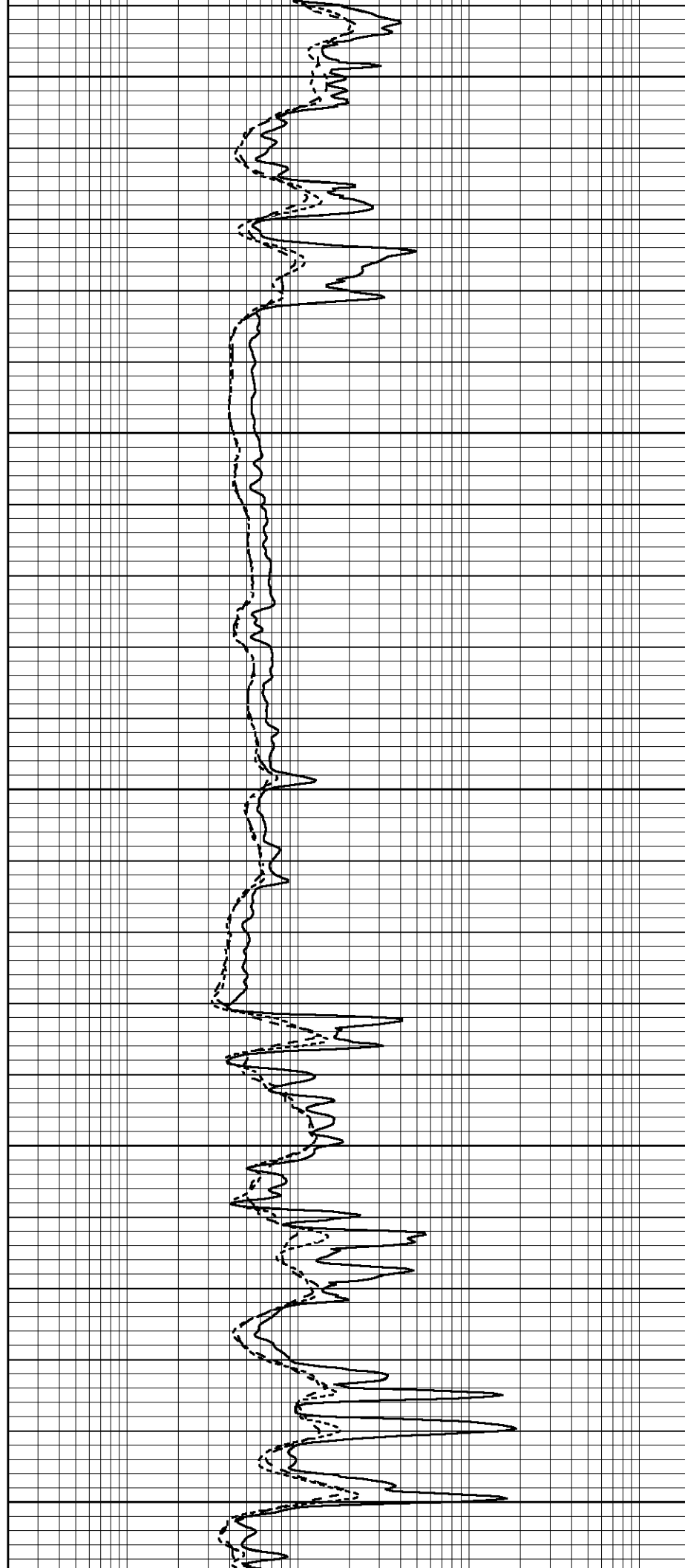
3400

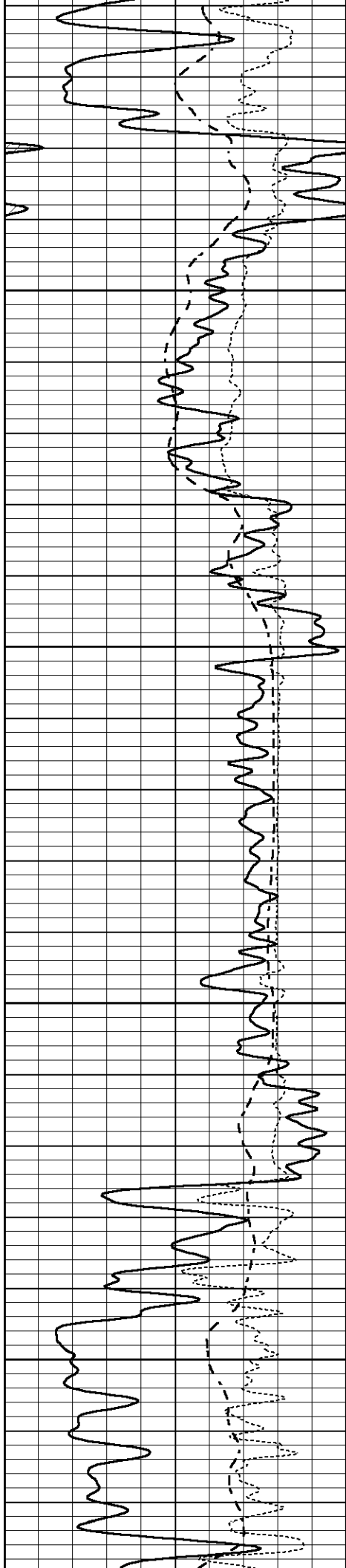
3450

3500

3550

3600



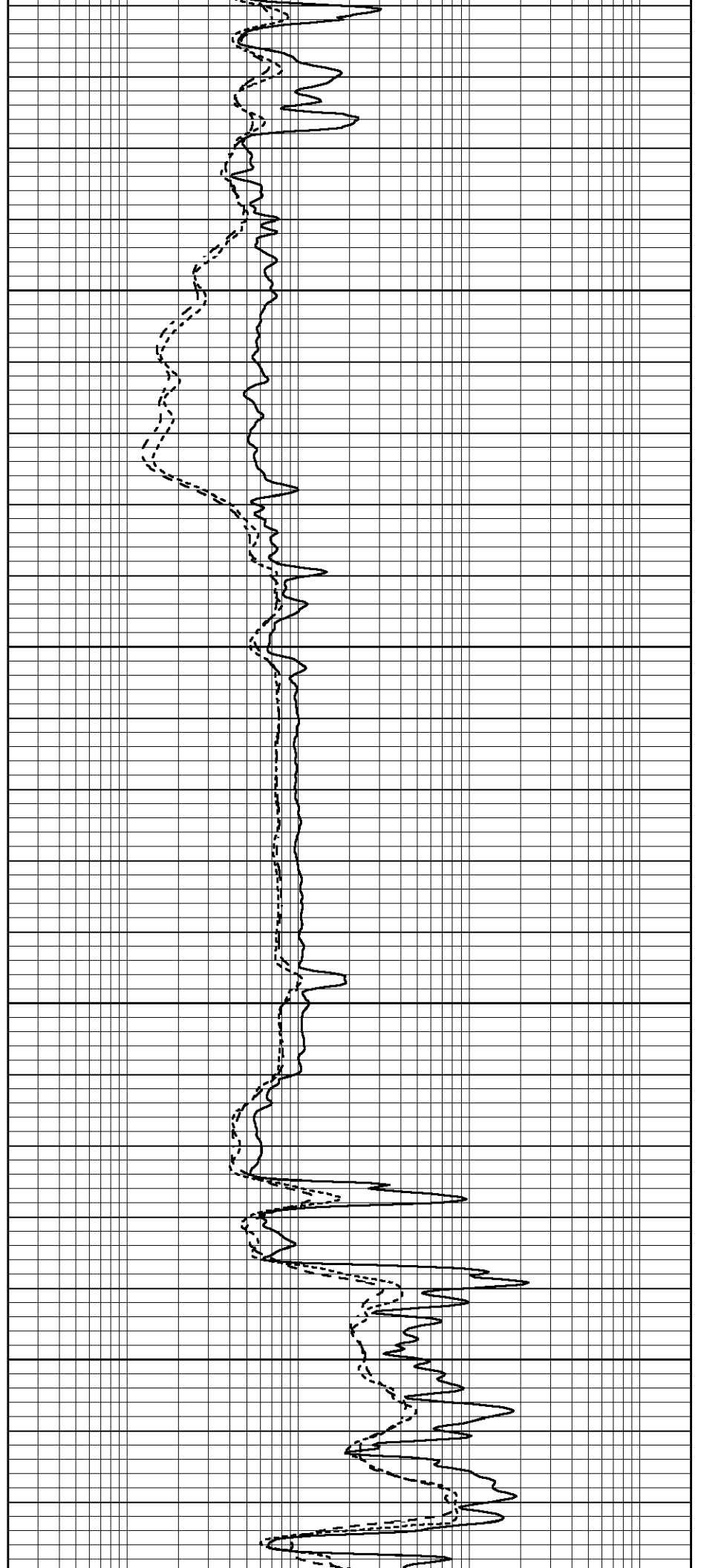


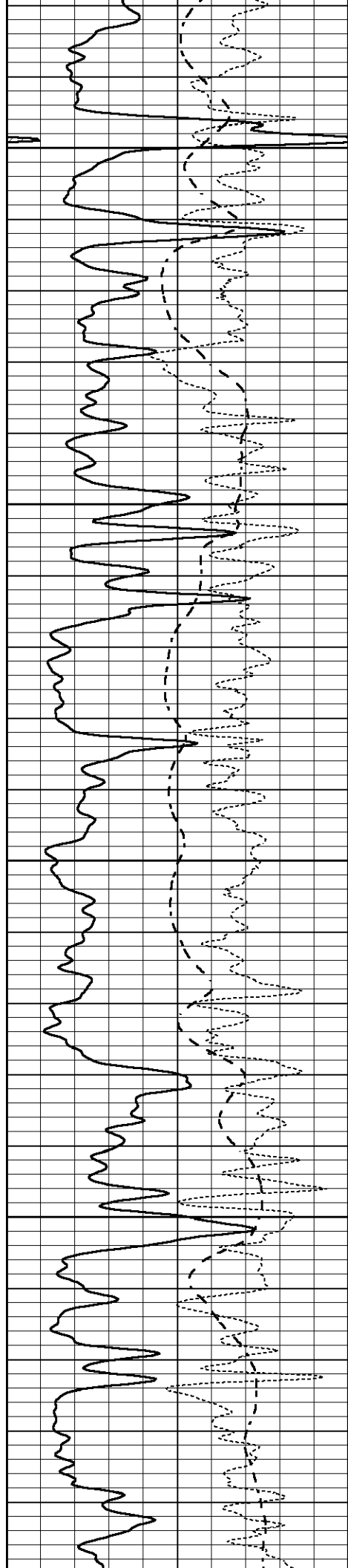
3650

3700

3750

3800





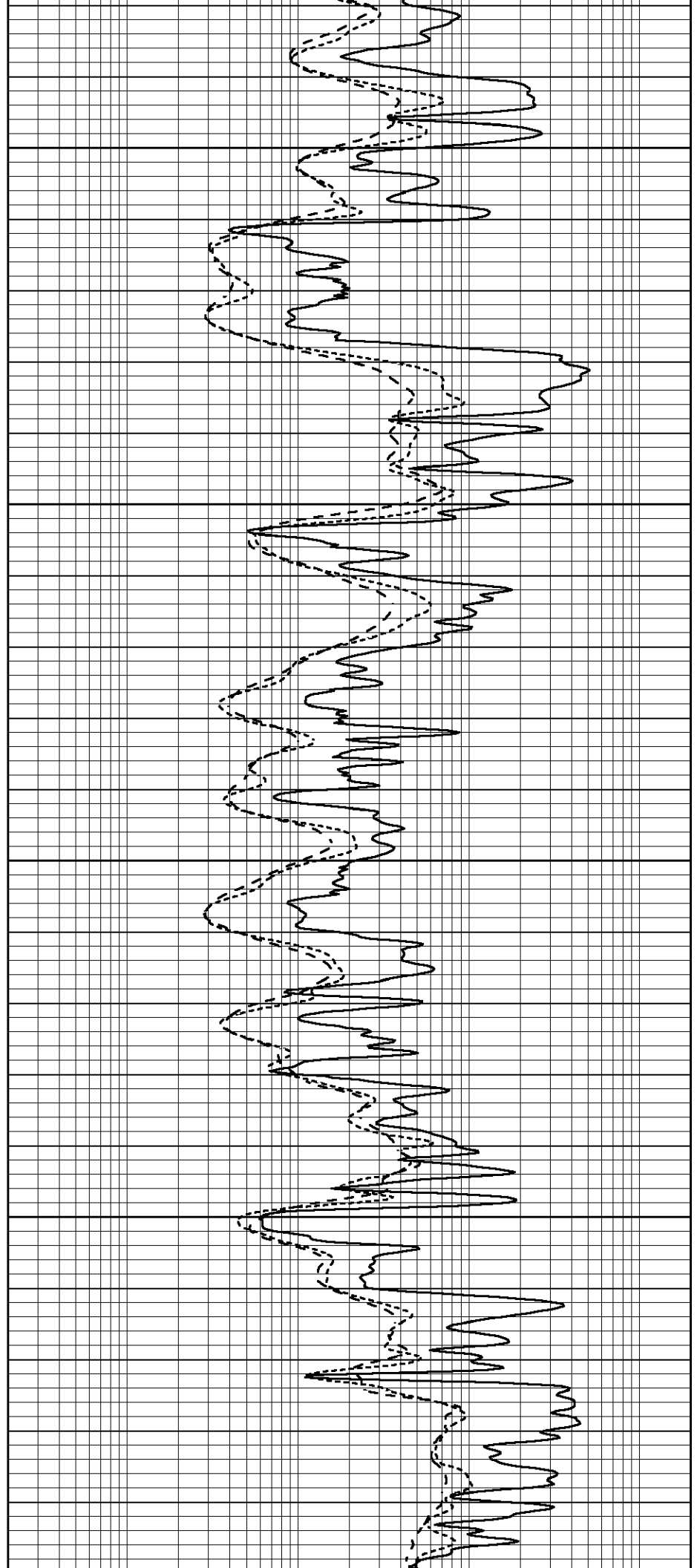
3850

3900

3950

4000

4050



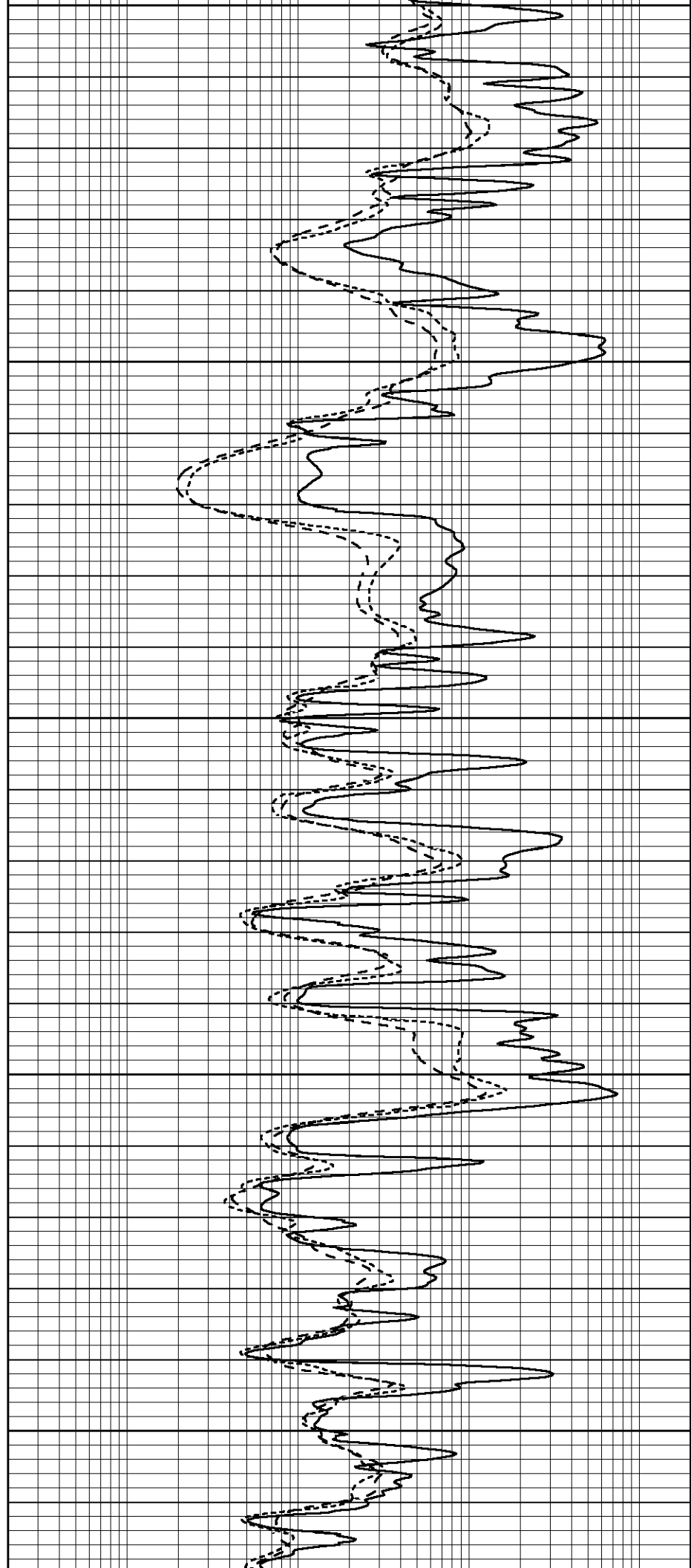
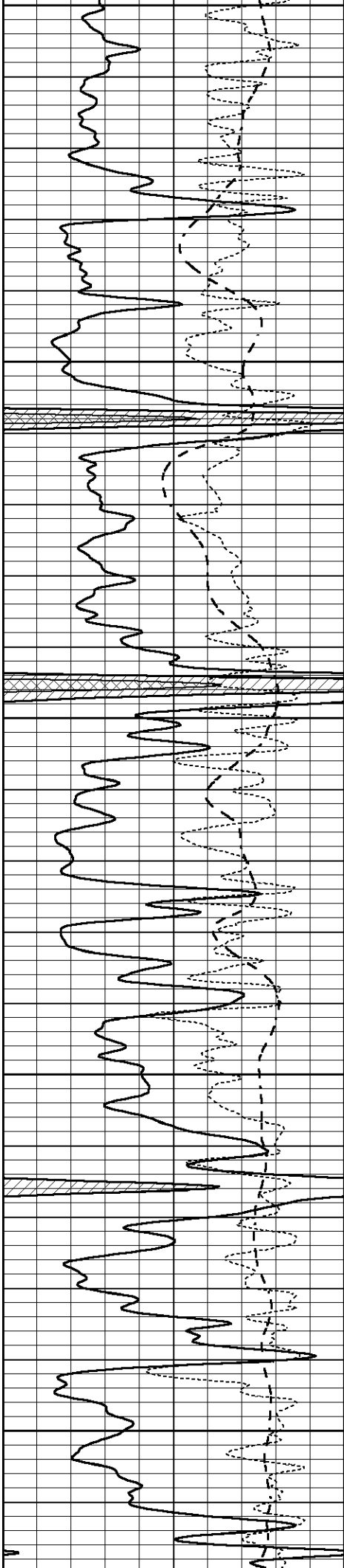
4050

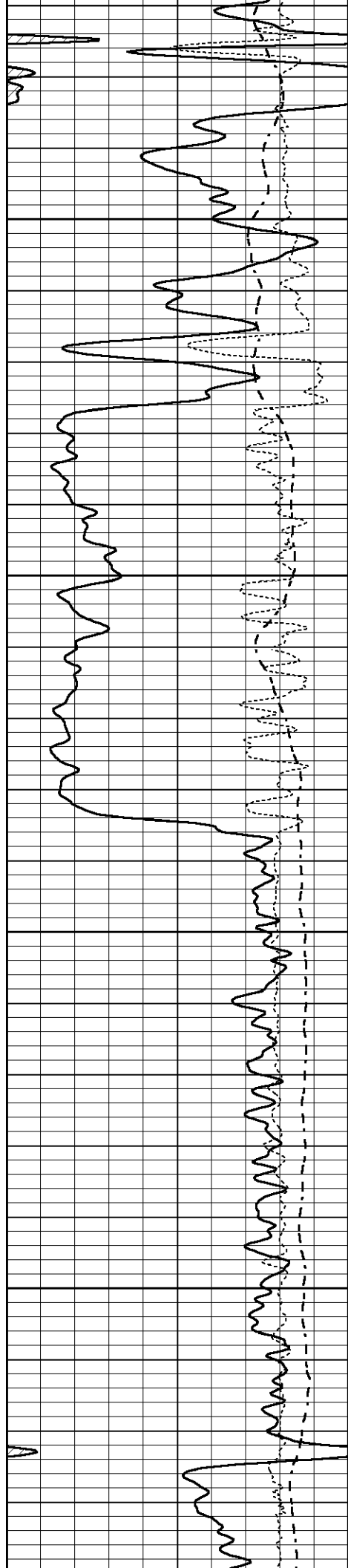
4100

4150

4200

4250



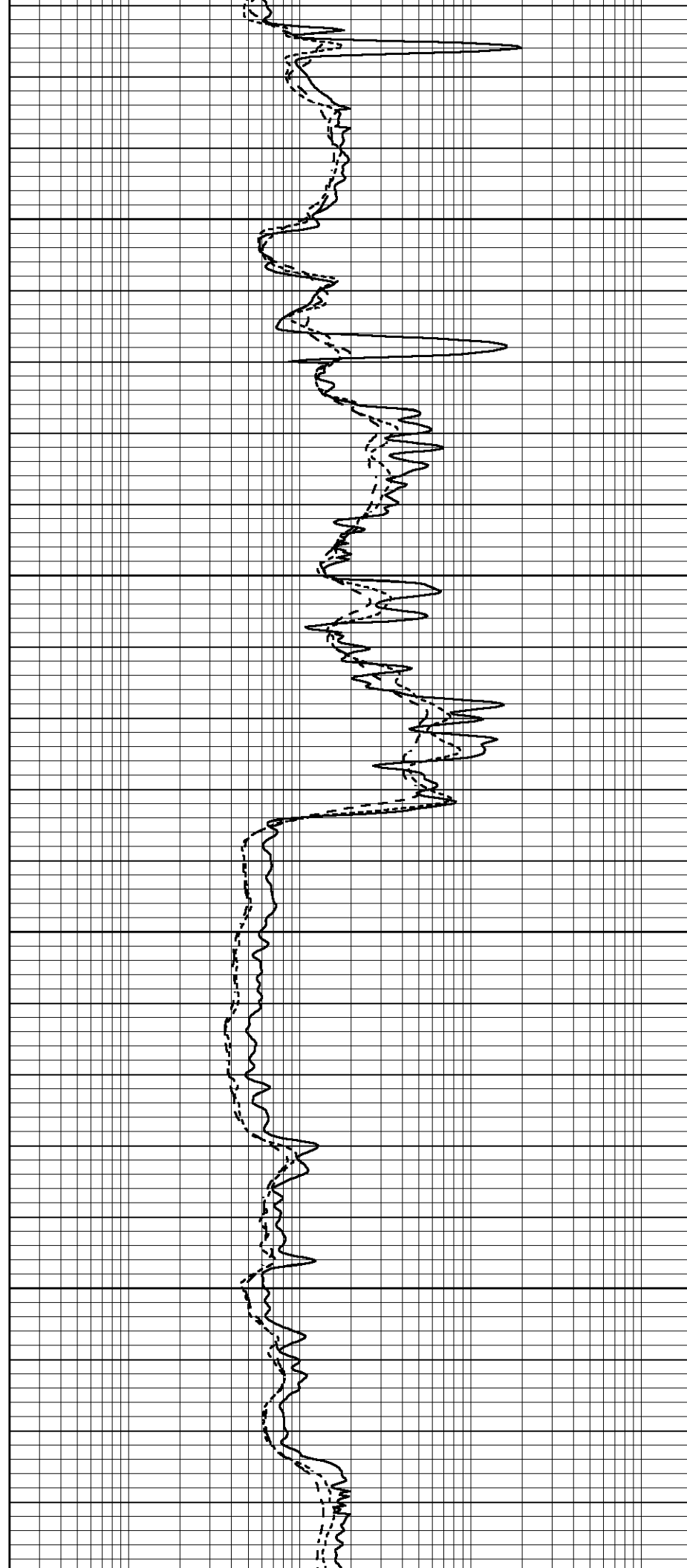


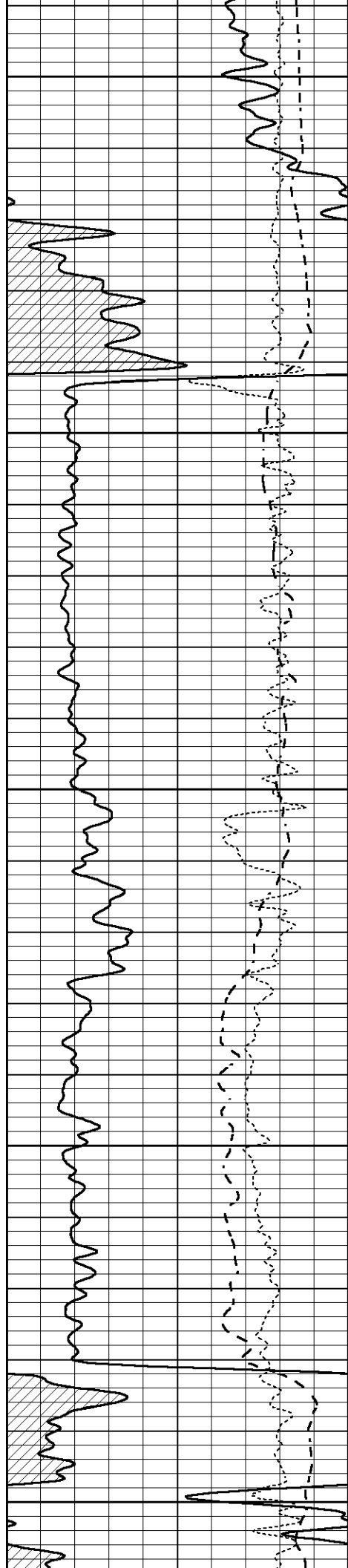
4300

4350

4400

4450





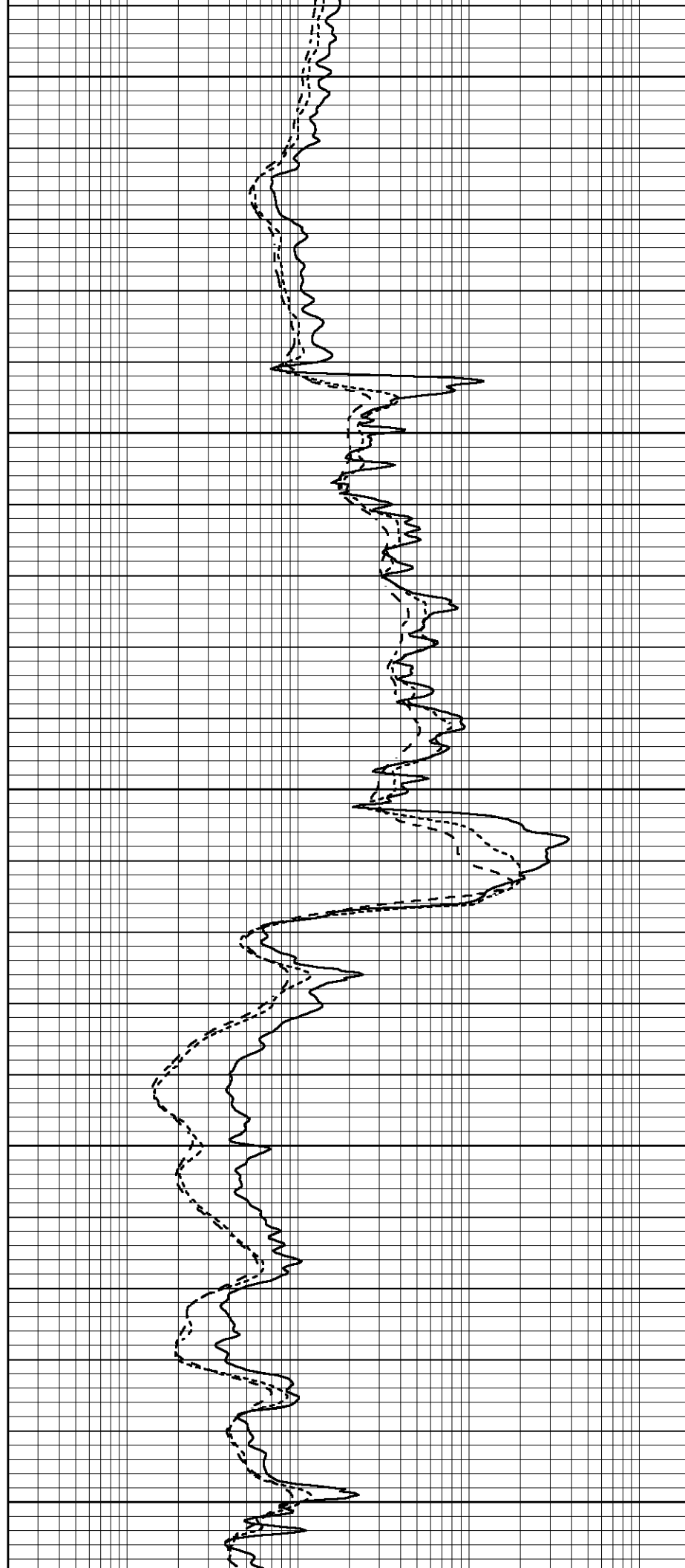
4500

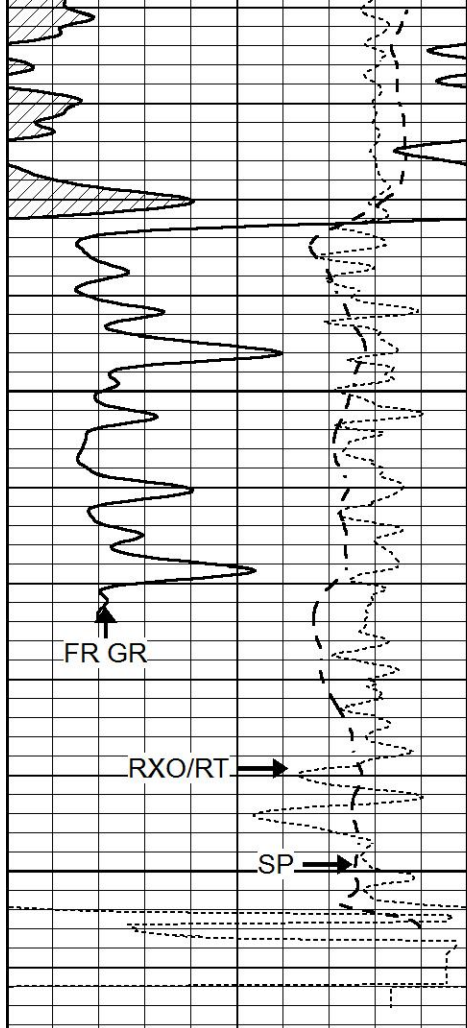
4550

4600

4650

4700



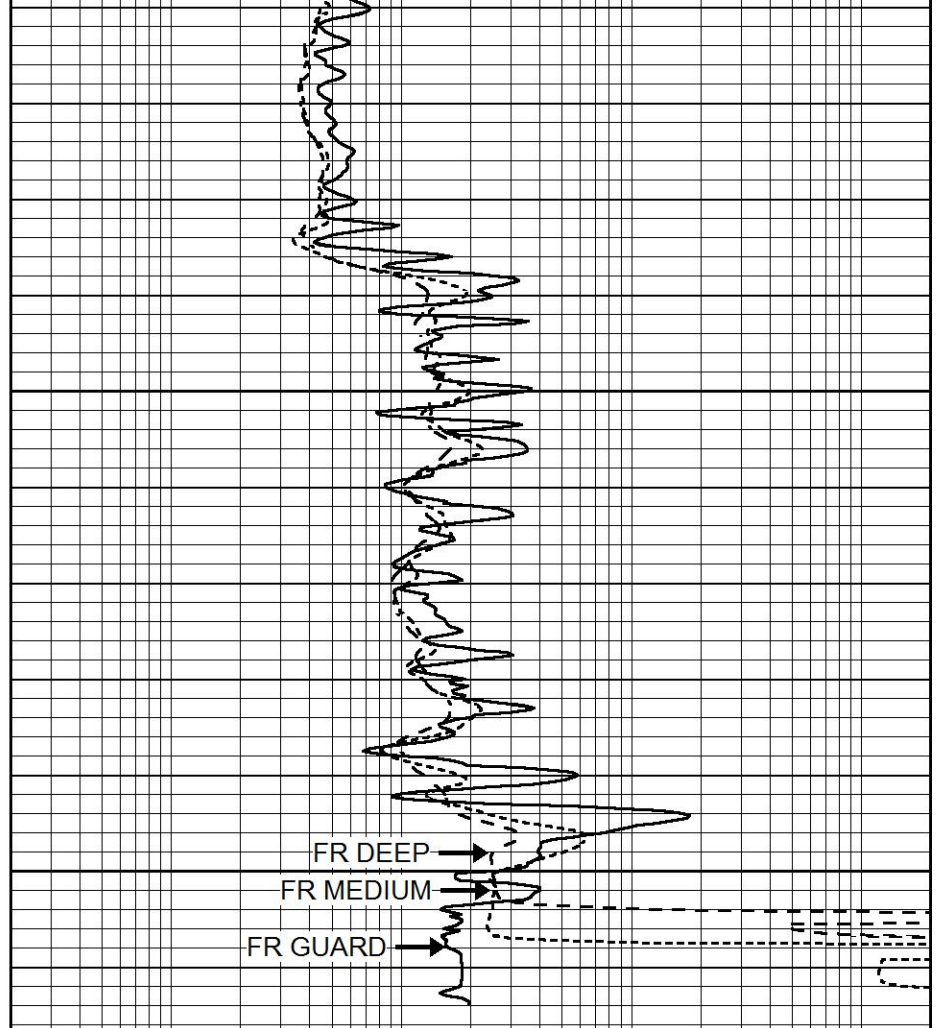


4750

4800

LTD 4810

0	GAMMA RAY (GAPI)	150
-100	SP (mV)	100
-250	Rxo/Rt	50



0.2	SHALLOW GUARD (Ohm-m)	2000
0.2	MEDIUM INDUCTION (Ohm-m)	2000
0.2	DEEP INDUCTION (Ohm-m)	2000

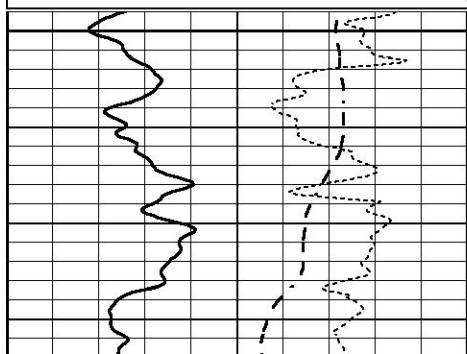


REPEAT SECTION

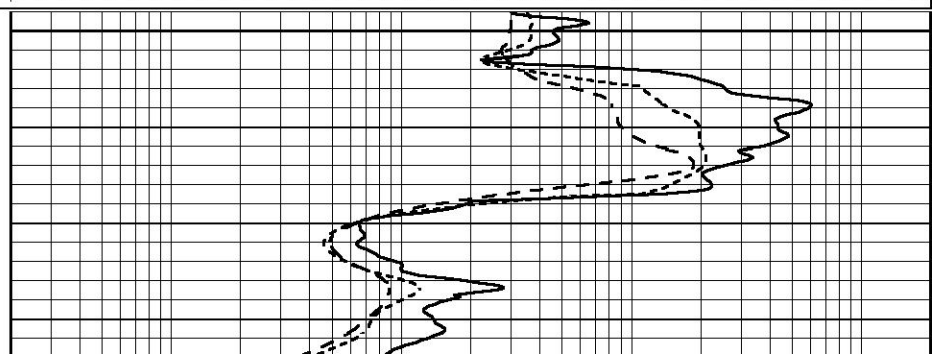
Database File 7776pe.db
 Dataset Pathname pass2DR
 Presentation Format _dil
 Dataset Creation Sun May 07 18:50:38 2023
 Charted by Depth in Feet scaled 1:240

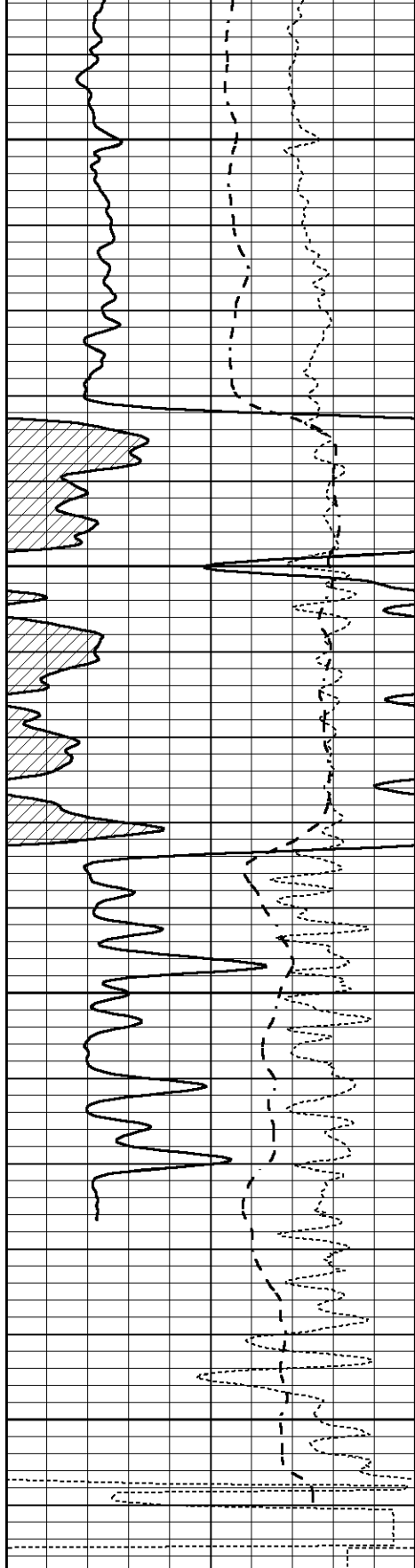
0	GAMMA RAY (GAPI)	150
-100	SP (mV)	100
-250	Rxo/Rt	50

0.2	SHALLOW GUARD (Ohm-m)	2000
0.2	MEDIUM INDUCTION (Ohm-m)	2000
0.2	DEEP INDUCTION (Ohm-m)	2000



4600





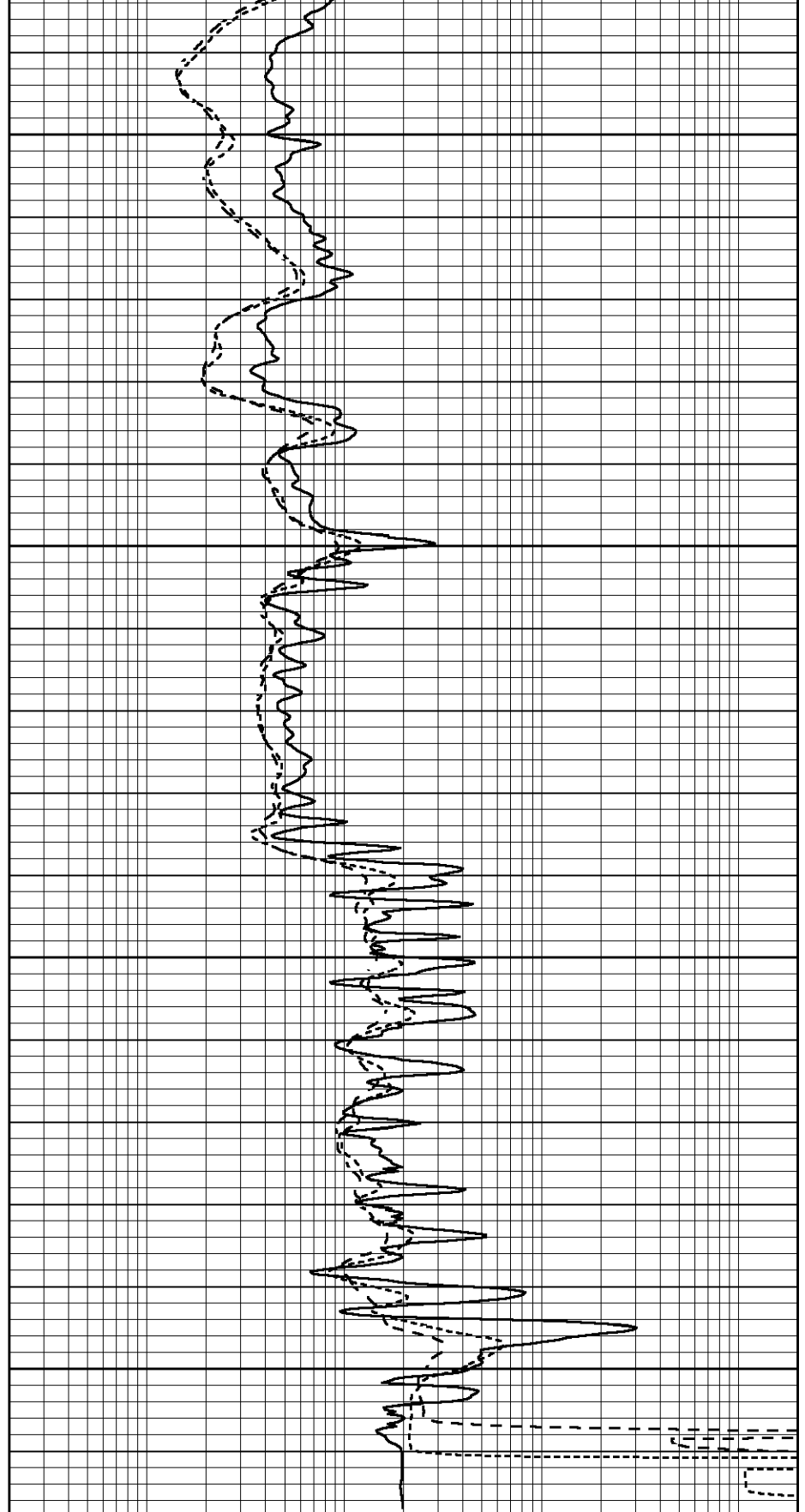
4650

4700

4750

4800

0	GAMMA RAY (GAPI)	150
-100	SP (mV)	100
-250	Rxo/Rt	50



0.2	SHALLOW GUARD (Ohm-m)	2000
0.2	MEDIUM INDUCTION (Ohm-m)	2000
0.2	DEEP INDUCTION (Ohm-m)	2000

Calibration Report

Database File 7776pe.db
 Dataset Pathname pass4M
 Dataset Creation Sun May 07 19:27:22 2023

Dual Induction Calibration Report

Serial-Model: FW1410-55-Probe
 Surface Cal Performed: Sun Apr 02 09:22:50 2023
 Downhole Cal Performed: Tue Feb 19 11:44:24 2019
 After Survey Verification Performed: Tue Feb 19 11:44:27 2019

Surface Calibration

Loop:	Readings			References			Results	
	Air	Loop	V	Air	Loop	mmho/m	m	b
Deep	0.011	0.656	V	1.000	400.000	mmho/m	550.000	-3.000
Medium	-0.000	0.731	V	1.000	464.000	mmho/m	530.000	-12.000
Internal:	Zero	Cal		Zero	Cal		m	b
Deep	0.007	0.649	V	0.000	400.000	mmho/m	623.784	-4.595
Medium	0.004	0.743	V	0.000	464.000	mmho/m	627.284	-2.251

Downhole Calibration

	Readings			References			Results	
	Zero	Cal	mmho/m	Zero	Cal	mmho/m	m'	b'
Deep	-0.824	395.917	mmho/m	-0.976	397.550	mmho/m	1.004	-0.149
Medium	3.565	471.327	mmho/m	3.468	471.590	mmho/m	1.001	-0.099
LL3		7.503	V		1500.000	Ohm-m		
		0.001	V		20.000	Ohm-m		
		-7.481	V		3745.000	mmho-m		

After Survey Verification

	Readings			Targets			Results	
	Zero	Cal	mmho/m	Zero	Cal	mmho/m	m'	b'
Deep	0.000	0.000	mmho/m	-0.824	395.917	mmho/m	1.000	0.000
Medium	0.000	0.000	mmho/m	3.565	471.327	mmho/m	1.000	0.000
LL3		0.000	Ohm-m		1500.000	Ohm-m		
		0.000	Ohm-m		20.000	Ohm-m		
		0.000	mmho-m		3745.000	mmho-m		

Litho Density Calibration Report

Serial: 140704
 Model: V4_10P
 Source Number: 74GBq-19

Master Calibration

Performed: Fri May 05 19:11:00 2023

	Background	Aluminum	Magnesium	
Window 1	525.08	5237.26	23474.33	cps
Window 2	43.73	1204.07	5975.39	cps
Window 4	228.93	1168.79	4973.83	cps
Window 5	517.72	8797.38	16664.49	cps
Window 6	40.82	1462.32	2865.99	cps
Window 8	246.25	2818.62	5227.99	cps
Bulk Density	-	2.6020	1.6830	g/cc
Pe	-	3.0000	2.5070	b/e

LS Alpha: : -1.8459 SS Alpha: : -0.7553 LS CPE: : 1.0957
 LS Beta: : 117531.5905 SS Beta: : 19089.7630 SS CPE: : 1.5205

Window 1	0.00	cps
Window 2	0.00	cps
Window 4	0.00	cps
Window 5	0.00	cps
Window 6	0.00	cps
Window 8	0.00	cps

After Survey Background Counts Verification

Performed: Wed Dec 31 18:00:00 1969

Window 1	0.00	cps
Window 2	0.00	cps
Window 4	0.00	cps
Window 5	0.00	cps
Window 6	0.00	cps
Window 8	0.00	cps

Lithodensity Caliper Calibration

Performed: Fri May 05 19:11:00 2023

Results		Readings		References (in)		Gain	Offset
Low	High	Low	High				
7228.5	10151.9	8.0	14.0			0.0	-6.8

Before Survey Caliper Verification

Performed:

	Reference	Reading
Caliper (in)	_____	_____

After Survey Caliper Verification

Performed:

	Reference	Reading
Caliper (in)	_____	_____

Compensated Neutron Calibration Report

Serial Number: 080621PMC
Tool Model: NABORS

PRE-SURVEY VERIFICATION

Detector	Readings	Measured	Target
Short Space	cps		
Long Space	cps	pu	pu

POST-SURVEY VERIFICATION

Detector	Readings	Measured	Target
Short Space	cps		
Long Space	cps	pu	pu

Gamma Ray Calibration Report

Serial Number: 7
Tool Model: Probe1
Performed: Sun Apr 02 09:22:40 2023

Calibrator Value:	1.0	GAPI
Background Reading:	0.0	cps
Calibrator Reading:	1.0	cps
Sensitivity:	0.5200	GAPI/cps