



**COMPENSATED DENSITY
NEUTRON
PE/LOG**

Company BEREXCO LLC.
Well LYGEROS #1
Field ELAINE
County LOGAN
State KANSAS

Company BEREXCO LLC.
Well LYGEROS #1
Field ELAINE
County LOGAN State KANSAS

Location: API #: 15-109-21673
990 FNL & 2310 FEL
SEC 2 TWP 12S RGE 34W
Permanent Datum Ground Level Elevation 3203
Log Measured From KB 10' AGL
Drilling Measured From KB
Other Services
ML
DIL
Elevation
K.B. 3213
D.F. 3211
G.L. 3203

Date	5/22/24
Run Number	One
Depth Driller	4830
Depth Logger	4832
Bottom Logged Interval	4812
Top Log Interval	3700
Casing Driller	8 5/8"@407'
Casing Logger	407
Bit Size	7 7/8"
Type Fluid in Hole	Chemical
Density / Viscosity	9.4/60
pH / Fluid Loss	10.5/8.0
Source of Sample	Pit
Rm @ Meas. Temp	1.75@70degf
Rmf @ Meas. Temp	1.31@70degf
Rmc @ Meas. Temp	2.10@70degf
Source of Rmf / Rmc	Calculated
Rm @ BHT	1.04@117degf
Time Circulation Stopped	11:00 AM
Time Logger on Bottom	1:30 PM
Maximum Recorded Temperature	117degf
Equipment Number	T-605
Location	Hays, KS.
Recorded By	GUS PFANENSTIEL
Witnessed By	KEATON JONES

<<< Fold Here >>>

All interpretations are opinions based on inferences from electrical or other measurements and we cannot and do not guarantee the accuracy or correctness of any interpretation, and we shall not, except in the case of gross or willful negligence on our part, be liable or responsible for any loss, costs, damages, or expenses incurred or sustained by anyone resulting from any interpretation made by any of our officers, agents or employees. These interpretations are also subject to our general terms and conditions set out in our current Price Schedule.

Comments

MONUMENT 2 WEST, 4 SOUTH, 1/4 WEST,
SOUTH INTO.

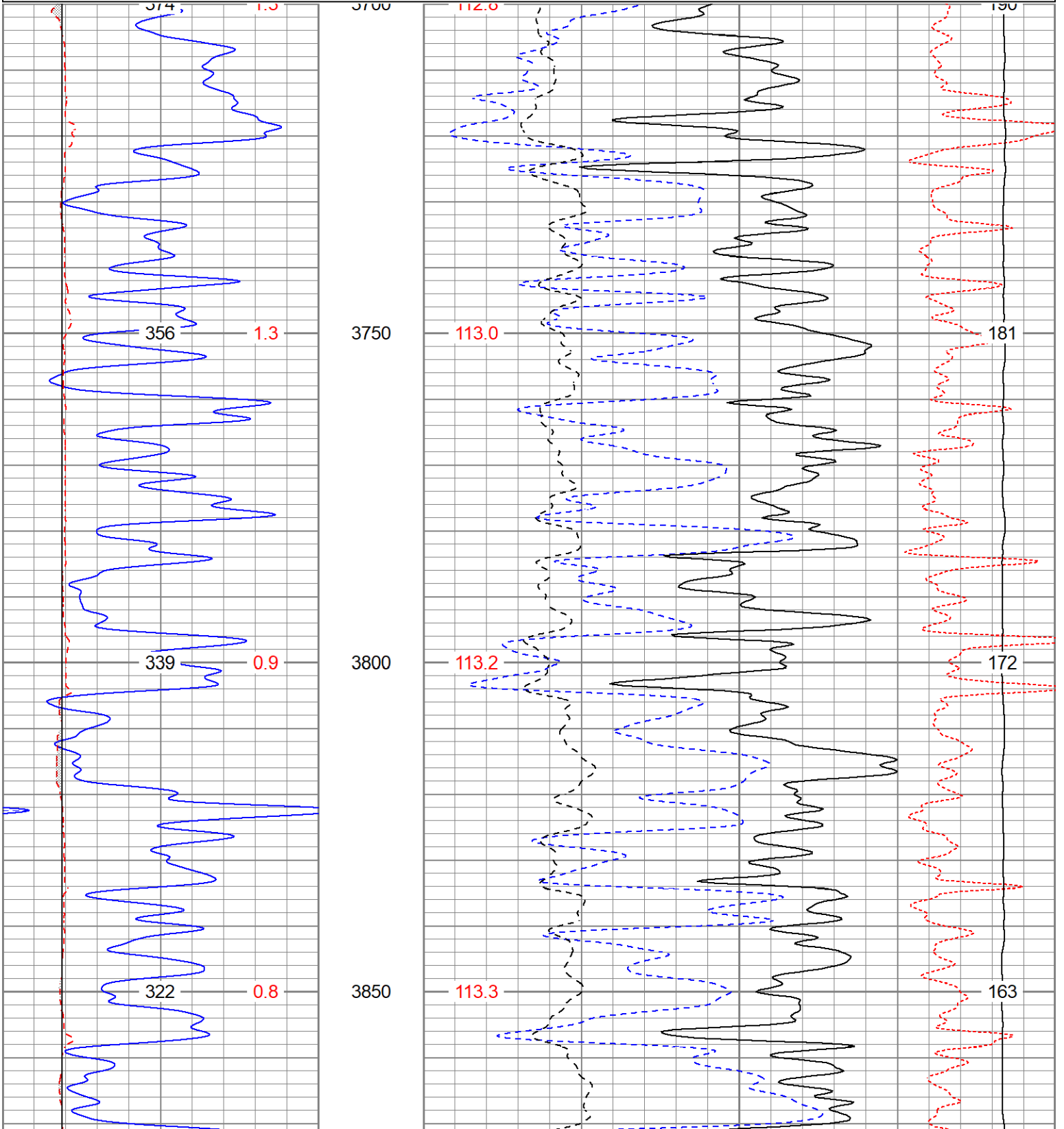
Thanks for using Gemini Wireline LLC
785-625-1182

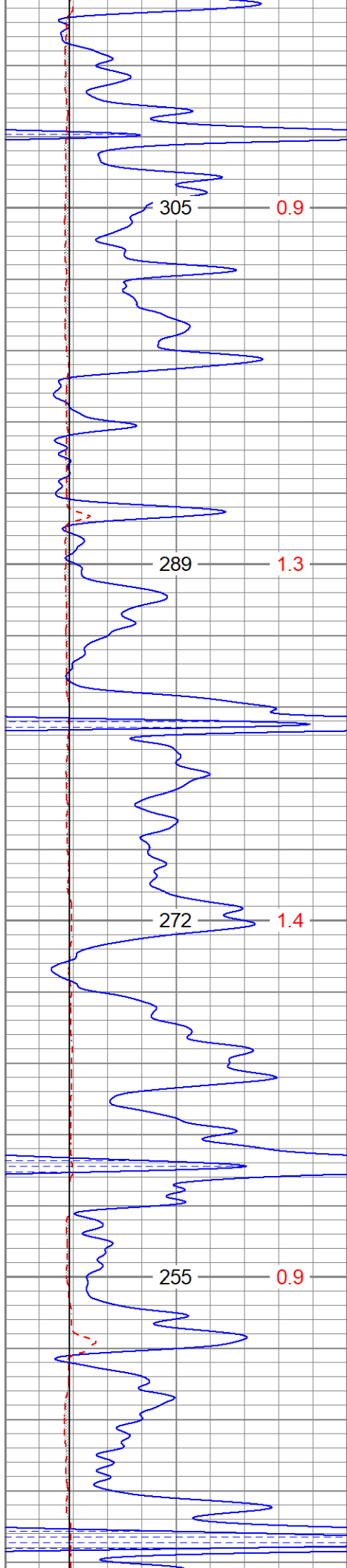


MAIN PASS

Database File berexcolygeros#1oh.db
 Dataset Pathname pass3.1
 Presentation Format digital_kcdnl
 Dataset Creation Wed May 22 15:03:24 2024
 Charted by Depth in Feet scaled 1:240

0	GR (GAPI)	150	30	NPOR (pu)	-10
6	DCAL (in)	16	30	DPOR (pu)	-10
6	BOREID (in)	16	70	DPOR (pu)	30
	TBHV (ft3)	DEVI (deg)	0	Pe (barn)	10
			0	-0.25	RHOC (g/cc)
			TEMP (degF)	8000	LTEN (lb)
					0
					ABHV (ft3)





3900

113.4

155

3950

113.6

146

4000

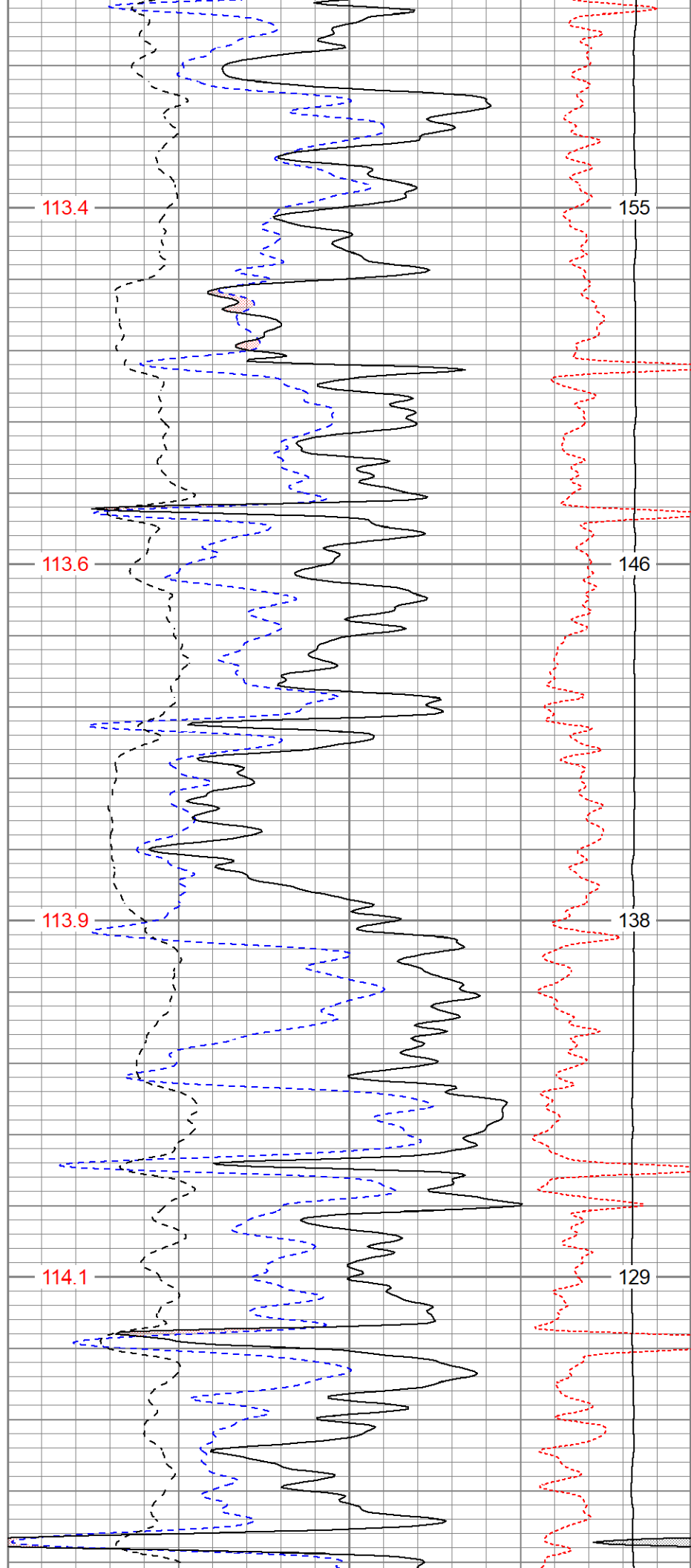
113.9

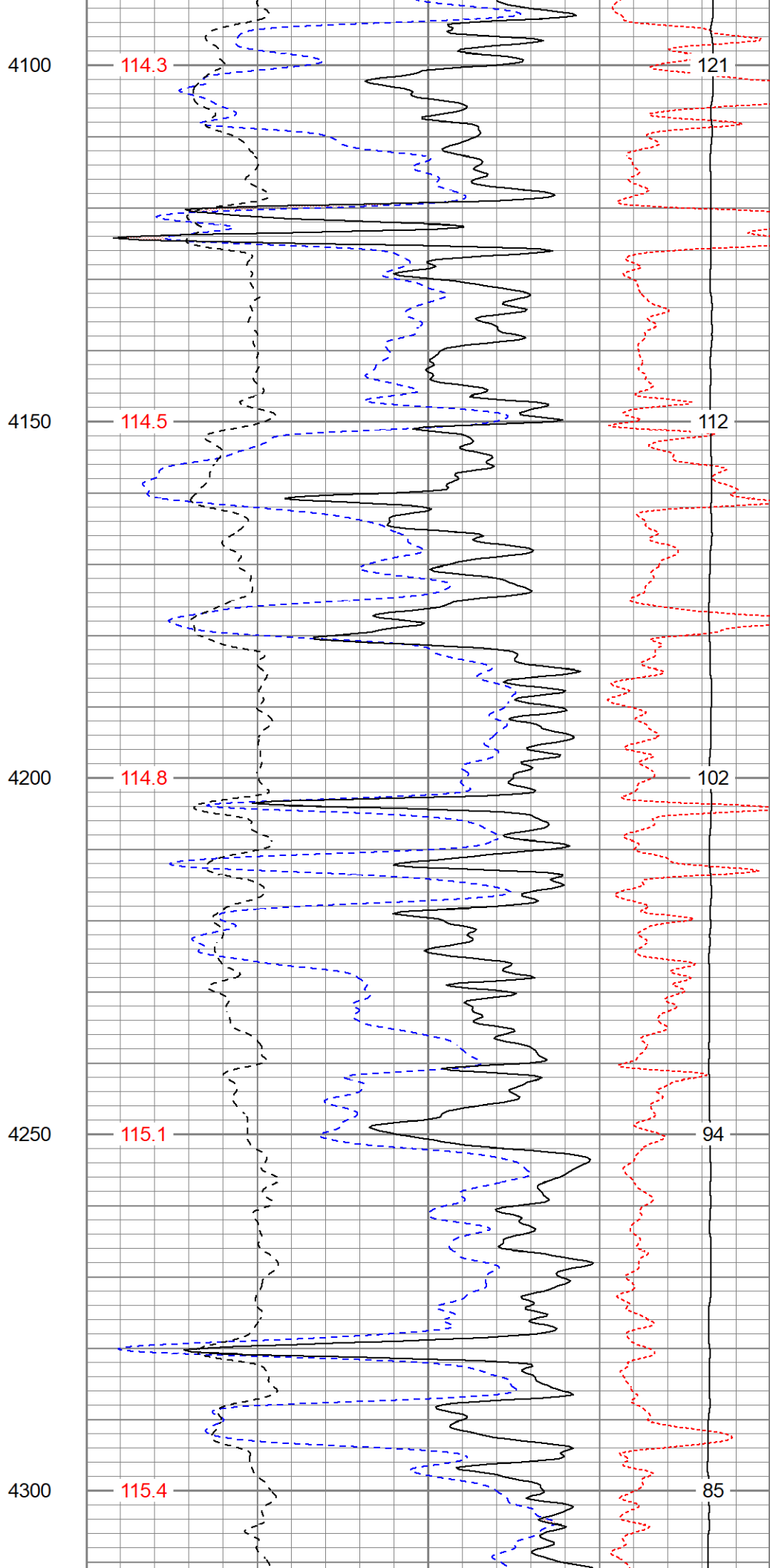
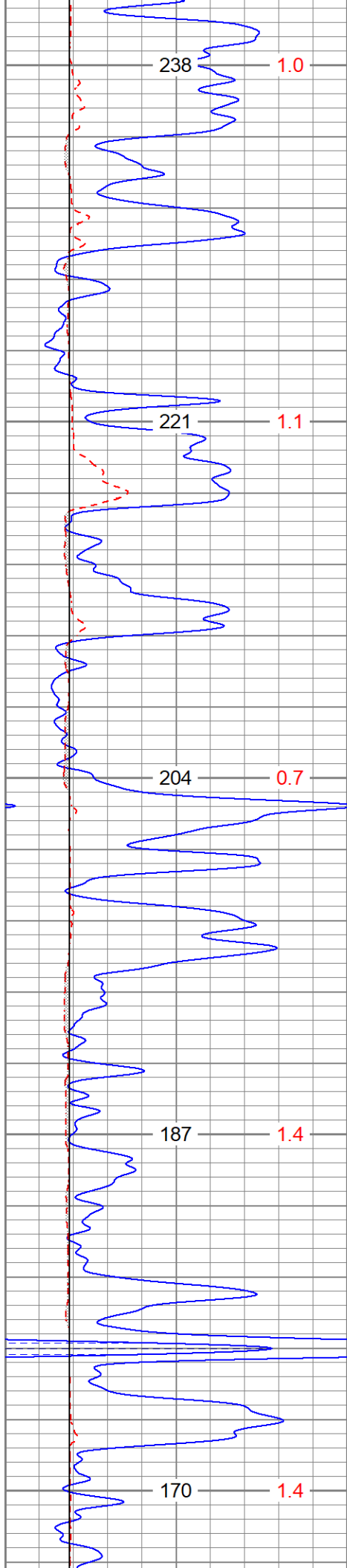
138

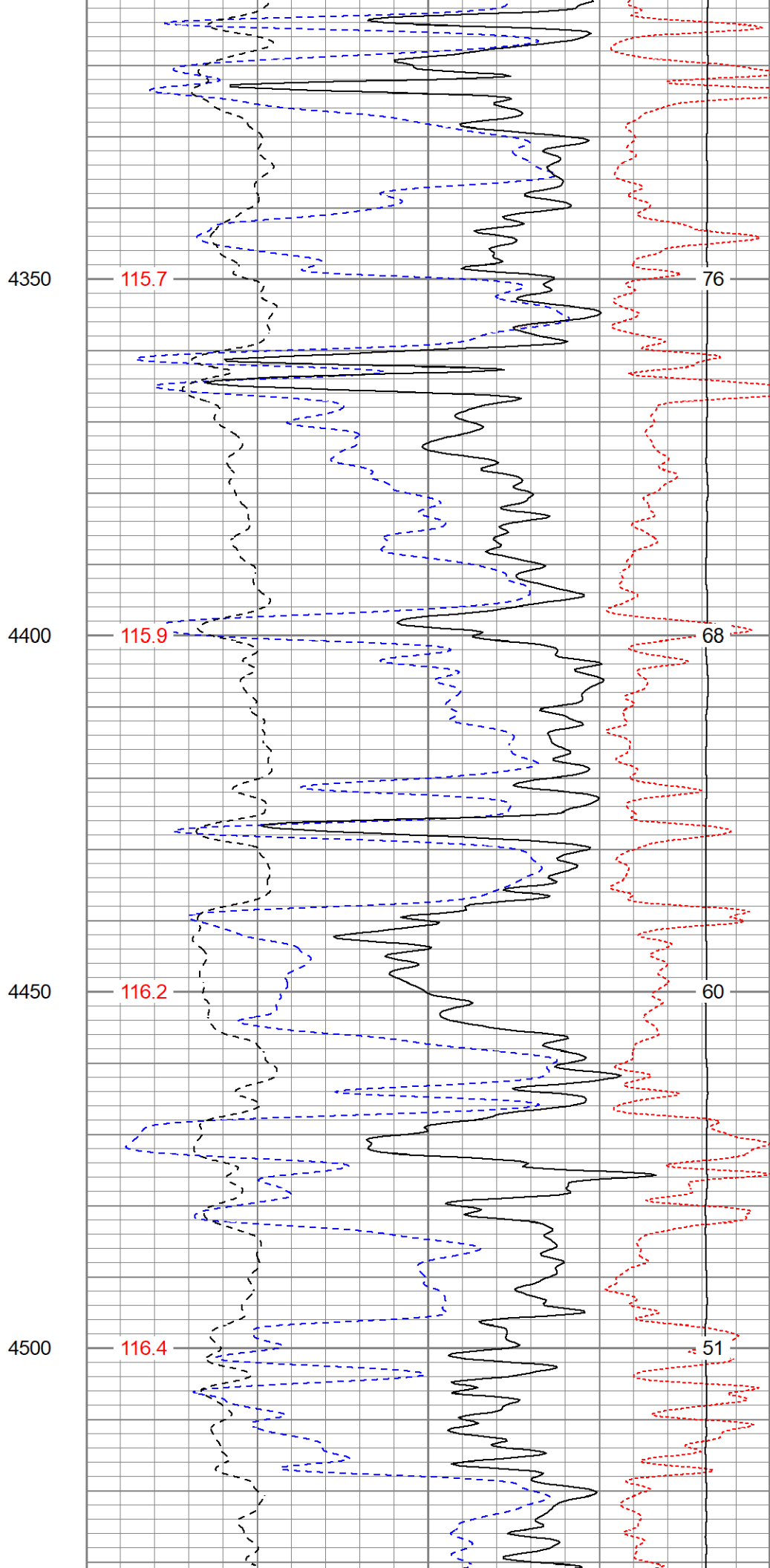
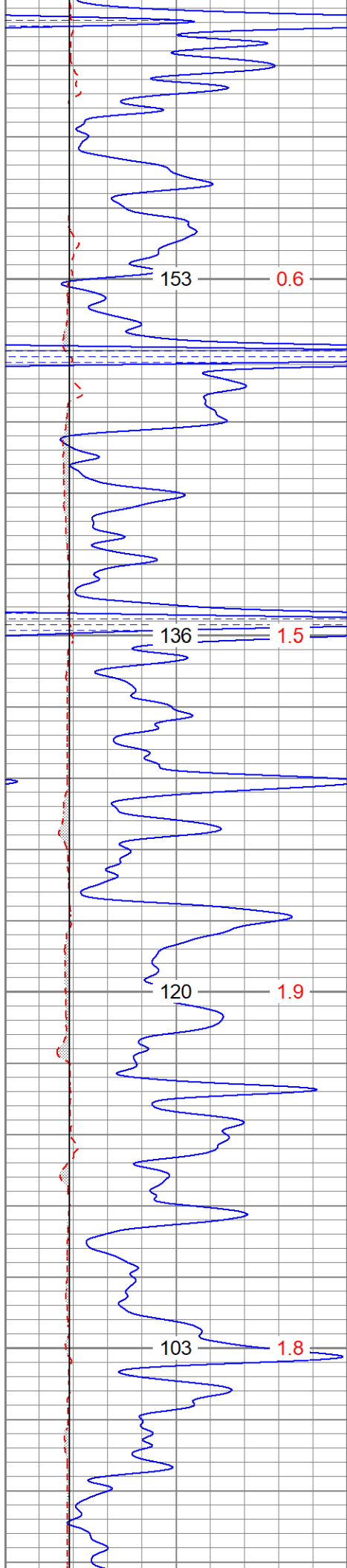
4050

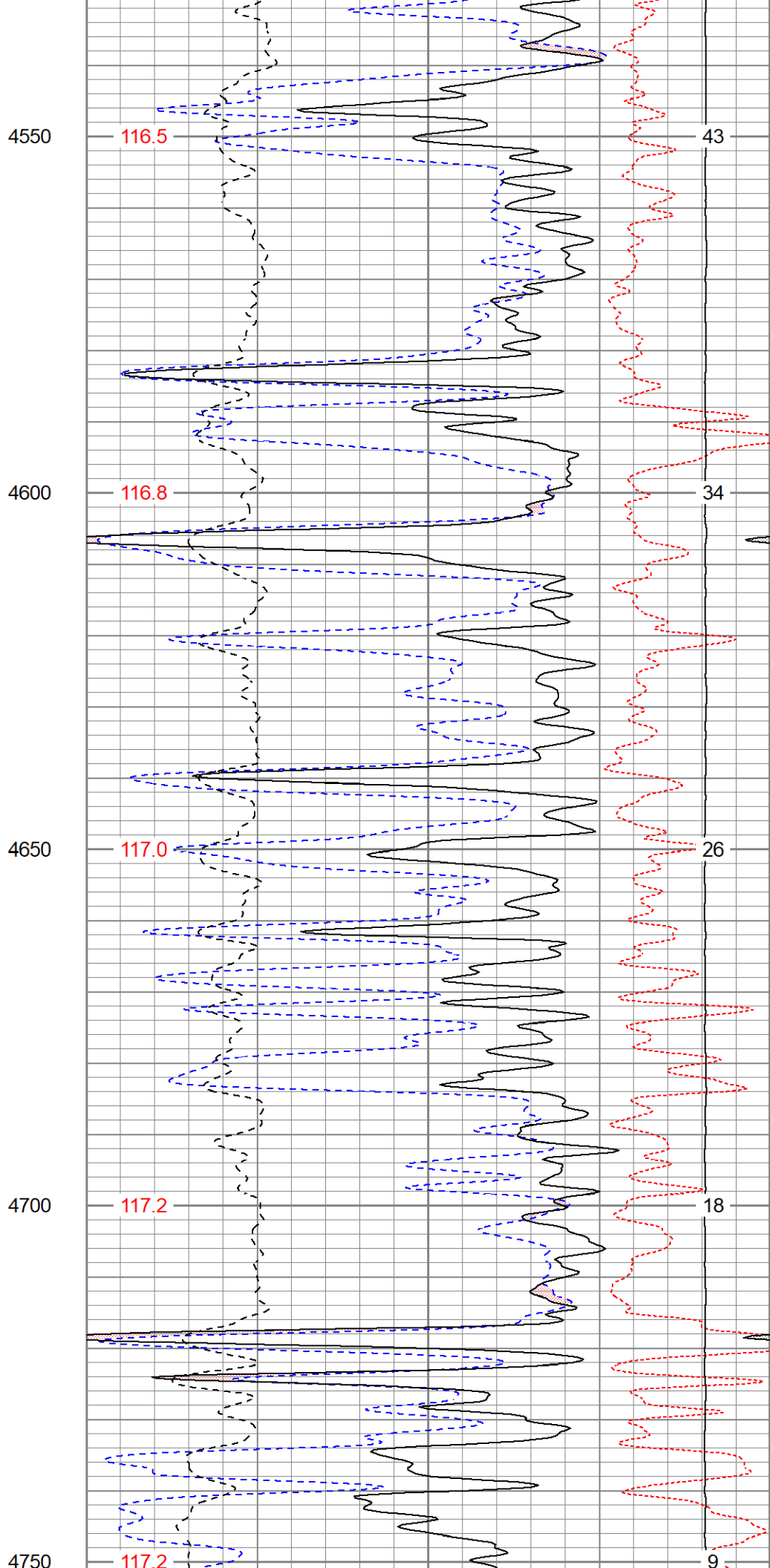
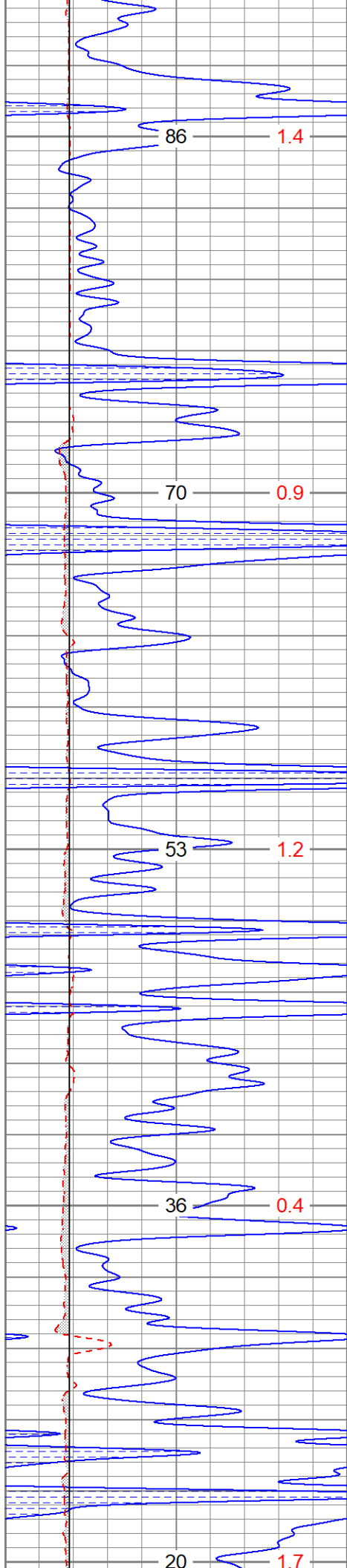
114.1

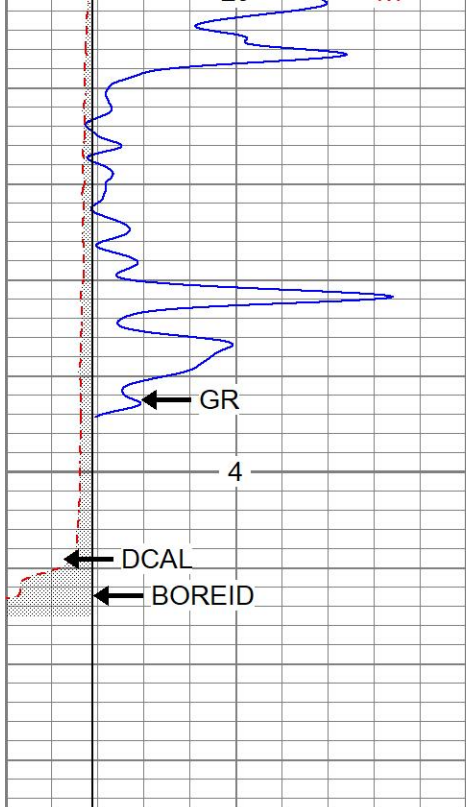
129





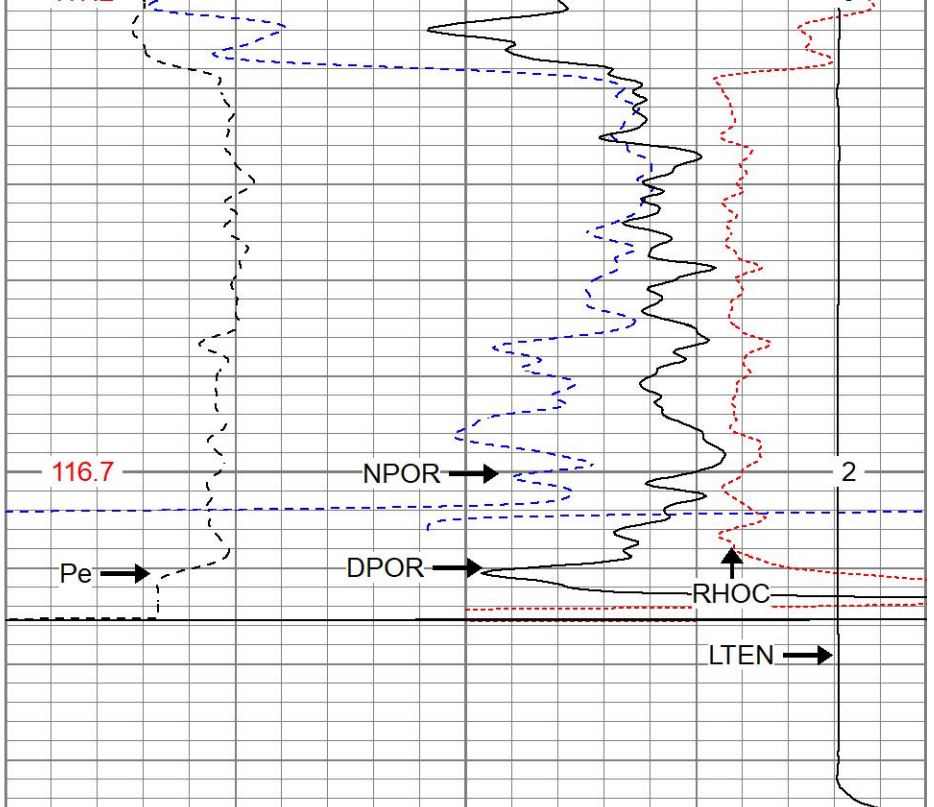






4800

LTD 4832



0	GR (GAPI)	150
6	DCAL (in)	16
6	BOREID (in)	16
	TBHV (ft3)	DEVI (deg)

30	NPOR (pu)	-10			
30	DPOR (pu)	-10			
70	DPOR (pu)	30			
0	Pe (barn)	10	-0.25	RHOC (g/cc)	0.25
	TEMP (degF)	8000	LTEN (lb)	0	ABHV (ft3)

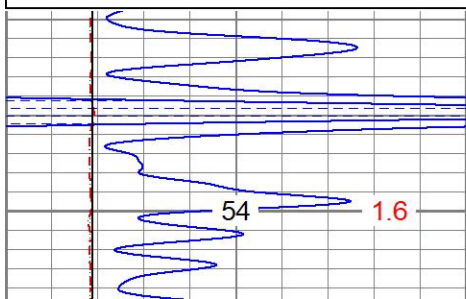


REPEAT SECTION

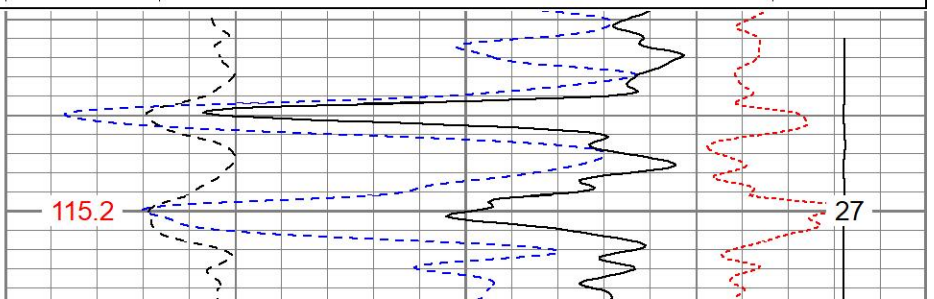
Database File berexcolygeros#1oh.db
 Dataset Pathname pass2RP.1
 Presentation Format digital_kcdnl
 Dataset Creation Wed May 22 15:06:59 2024
 Charted by Depth in Feet scaled 1:240

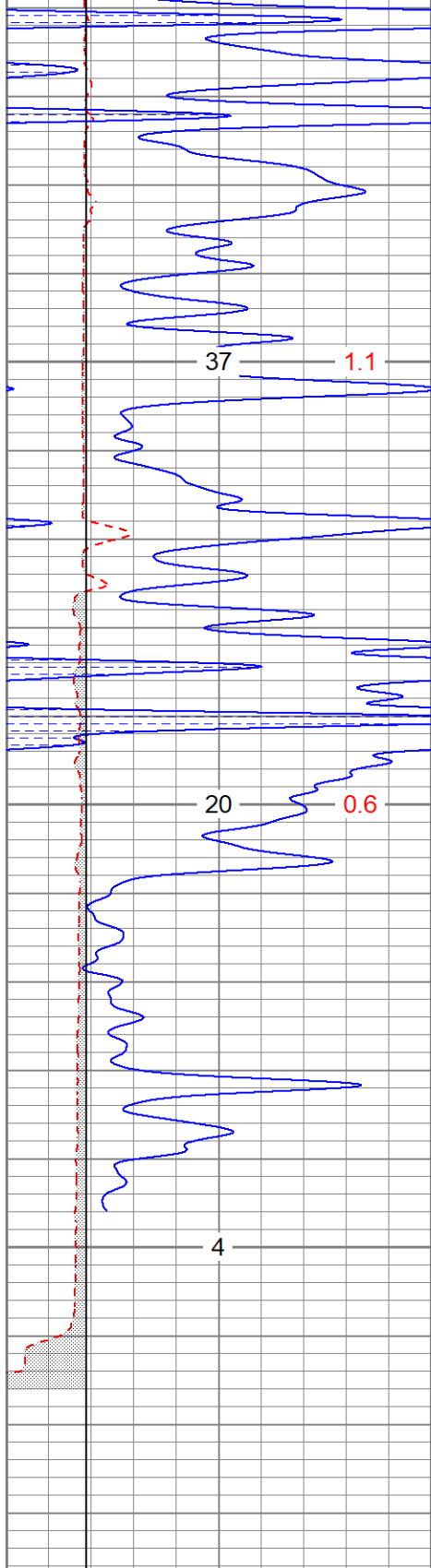
0	GR (GAPI)	150
6	DCAL (in)	16
6	BOREID (in)	16
	TBHV (ft3)	DEVI (deg)

30	NPOR (pu)	-10			
30	DPOR (pu)	-10			
70	DPOR (pu)	30			
0	Pe (barn)	10	-0.25	RHOC (g/cc)	0.25
	TEMP (degF)	8000	LTEN (lb)	0	ABHV (ft3)



4650

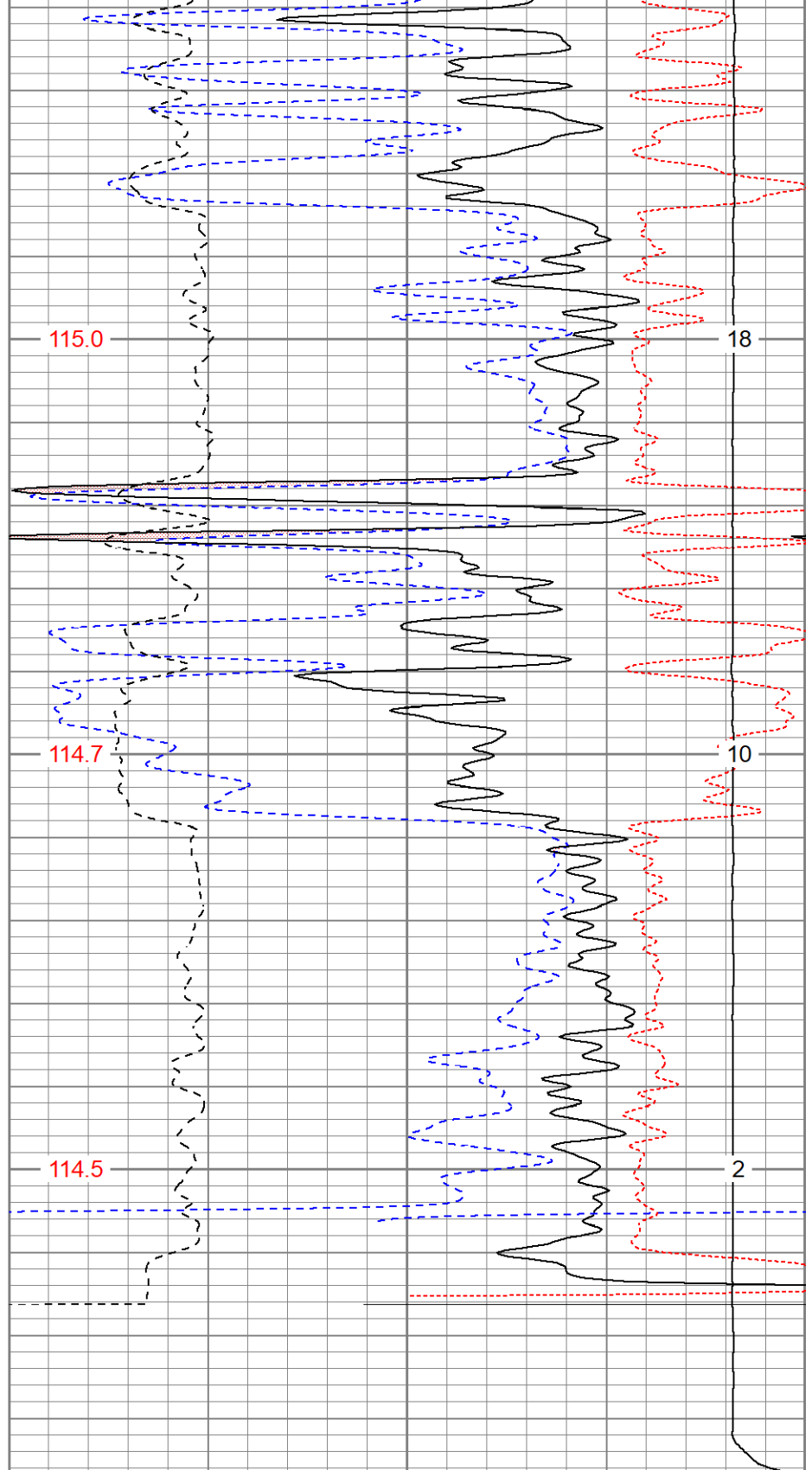




4700

4750

4800



115.0

114.7

114.5

0	GR (GAPI)	150
6	DCAL (in)	16
6	BOREID (in)	16
	TBHV (ft3)	DEVI (deg)

30	NPOR (pu)	-10		
30	DPOR (pu)	-10		
70	DPOR (pu)	30		
0	Pe (barn)	10 -0.25	RHOC (g/cc)	0.25
	TEMP (degF)	8000	LTEN (lb)	0
				ABHV (ft3)

Calibration Report

Dual Induction Calibration Report

Serial-Model: 1842-ADM
 Surface Cal Performed: Mon Sep 20 22:00:42 2021
 Downhole Cal Performed: Thu Sep 14 13:06:48 2023
 After Survey Verification Performed: Thu Sep 14 13:02:29 2023

Surface Calibration

Loop:	Readings			References			Results	
	Air	Loop	V	Air	Loop		m	b
Deep	0.018	0.672	V	0.000	350.000	mmho/m	535.475	-9.896
Medium	0.003	0.769	V	0.000	400.000	mmho/m	522.607	-1.745
Internal:	Zero	Cal		Zero	Cal		m	b
Deep	0.018	0.672	V	0.000	350.000	mmho/m	535.240	-9.549
Medium	0.003	0.768	V	0.000	550.000	mmho/m	718.637	-2.088

Downhole Calibration

Internal:	Readings			References			Results	
	Zero	Cal		Zero	Cal		m	b
Deep	-0.210	349.810	mmho/m	-0.343	349.810	mmho/m	1.000	-0.133
Medium	6.952	396.760	mmho/m	-0.226	399.745	mmho/m	1.026	-7.360
Shallow	2.495	0.026	V	500.000	2.000	Ohm-m	201.711	-3.319

After Survey Verification

Internal:	Readings			Targets			Results	
	Zero	Cal		Zero	Cal		m'	b'
Deep	0.000	0.000	mmho/m	32.030	5.643	mmho/m	1.000	-0.133
Medium	0.000	0.000	mmho/m	6.952	396.760	mmho/m	1.026	-7.360
Shallow	0.000	0.000	Ohm-m	500.000	2.000	Ohm-m	1.000	0.000

Admyr Lithodensity Calibration Report

Serial-Model: 1C-C
 Source: Blue2
 Master Calibration Performed: Tue Aug 30 10:20:37 2022

Master Calibration

	Density		Far Detector	Near Detector	
Magnesium	1.670	g/cc	6362.49	3546.71	cps
Aluminium	2.640	g/cc	1733.54	2362.69	cps
Aluminium+Sleeve	2.617	g/cc	1657.01	2197.69	cps
Spine Angle = 72.65			Density/Spine Ratio = 0.712		
	PE		NLITH	NHARD	
Magnesium	2.000	barn	2520.00	1620.00	cps
Aluminium	3.000	barn	1926.00	1699.00	cps
Aluminium+Sleeve	5.000	barn	915.00	1230.00	cps
M = 0.370			B = -0.079	R = 0.999	

Size

Reading

Small Ring	8.00	in	8.61	V
Large Ring	14.30	in	12.40	V

Neutron Calibration Report

Serial Number:	AD5139			
Tool Model:	ADMY5139			
Performed:	(Not Performed)			
Calibrator Value:	1		NAPI	
Calibrator Reading:	1		cps	
Sensitivity:	1		NAPI/cps	

Temperature Calibration Report

Serial Number:	WithMC			
Tool Model:	WMC			
Performed:	Fri Apr 19 12:15:04 2019			
	Reference		Reading	
Low Reference:	0.00	degF	0.00	degF
High Reference:	1.00	degF	1.00	degF
Gain:	1.00			
Offset:	0.00			
Delta Spacing	1			

Inclinometer Calibration Report

Performed:	Wed May 5 19:20:48 2021				
	Low Read.	High Read.	Low Ref.	High Ref.	
X Accelerometer	205.00	1843.00	-1.00	1.00	gee
Y Accelerometer	205.00	1843.00	-1.00	1.00	gee
Z Accelerometer					gee

Gamma Ray Calibration Report

Serial Number:	WithMC			
Tool Model:	WMC			
Performed:	Sat Apr 6 22:30:37 2024			
Calibrator Value:	1.0		GAPI	
Background Reading:	0.0		cps	
Calibrator Reading:	1.0		cps	
Sensitivity:	1.0000		GAPI/cps	