



MICRO  
LOG

Company BEREXCO LLC.  
Well LYGEROS #1  
Field ELAINE  
County LOGAN  
State KANSAS

Company BEREXCO LLC.  
Well LYGEROS #1  
Field ELAINE  
County LOGAN State KANSAS

Location: API #: 15-109-21673  
990 FNL & 2310 FEL  
SEC 2 TWP 12S RGE 34W  
Permanent Datum Ground Level Elevation 3203  
Log Measured From KB 10' AGL  
Drilling Measured From KB  
Other Services  
DIL  
CDNL  
Elevation  
K.B. 3213  
D.F. 3211  
G.L. 3203

Date	5/22/24
Run Number	TWO
Depth Driller	4830
Depth Logger	4832
Bottom Logged Interval	4830
Top Log Interval	3700
Casing Driller	8 5/8"@407'
Casing Logger	407
Bit Size	7 7/8"
Type Fluid in Hole	Chemical
Density / Viscosity	9.4/60
pH / Fluid Loss	10.5/8.0
Source of Sample	Pit
Rm @ Meas. Temp	1.75@70degf
Rmf @ Meas. Temp	1.31@70degf
Rmc @ Meas. Temp	2.10@70degf
Source of Rmf / Rmc	Calculated
Rm @ BHT	1.04@117degf
Time Circulation Stopped	11:00 AM
Time Logger on Bottom	1:30 PM
Maximum Recorded Temperature	117degf
Equipment Number	T-605
Location	Hays, KS.
Recorded By	GUS PFANENSTIEL
Witnessed By	KEATON JONES

<<< Fold Here >>>

All interpretations are opinions based on inferences from electrical or other measurements and we cannot and do not guarantee the accuracy or correctness of any interpretation, and we shall not, except in the case of gross or willful negligence on our part, be liable or responsible for any loss, costs, damages, or expenses incurred or sustained by anyone resulting from any interpretation made by any of our officers, agents or employees. These interpretations are also subject to our general terms and conditions set out in our current Price Schedule.

Comments

MONUMENT 2 WEST, 4 SOUTH, 1/4 WEST,  
SOUTH INTO.  
  
Thanks for using Gemini Wireline LLC  
785-625-1182

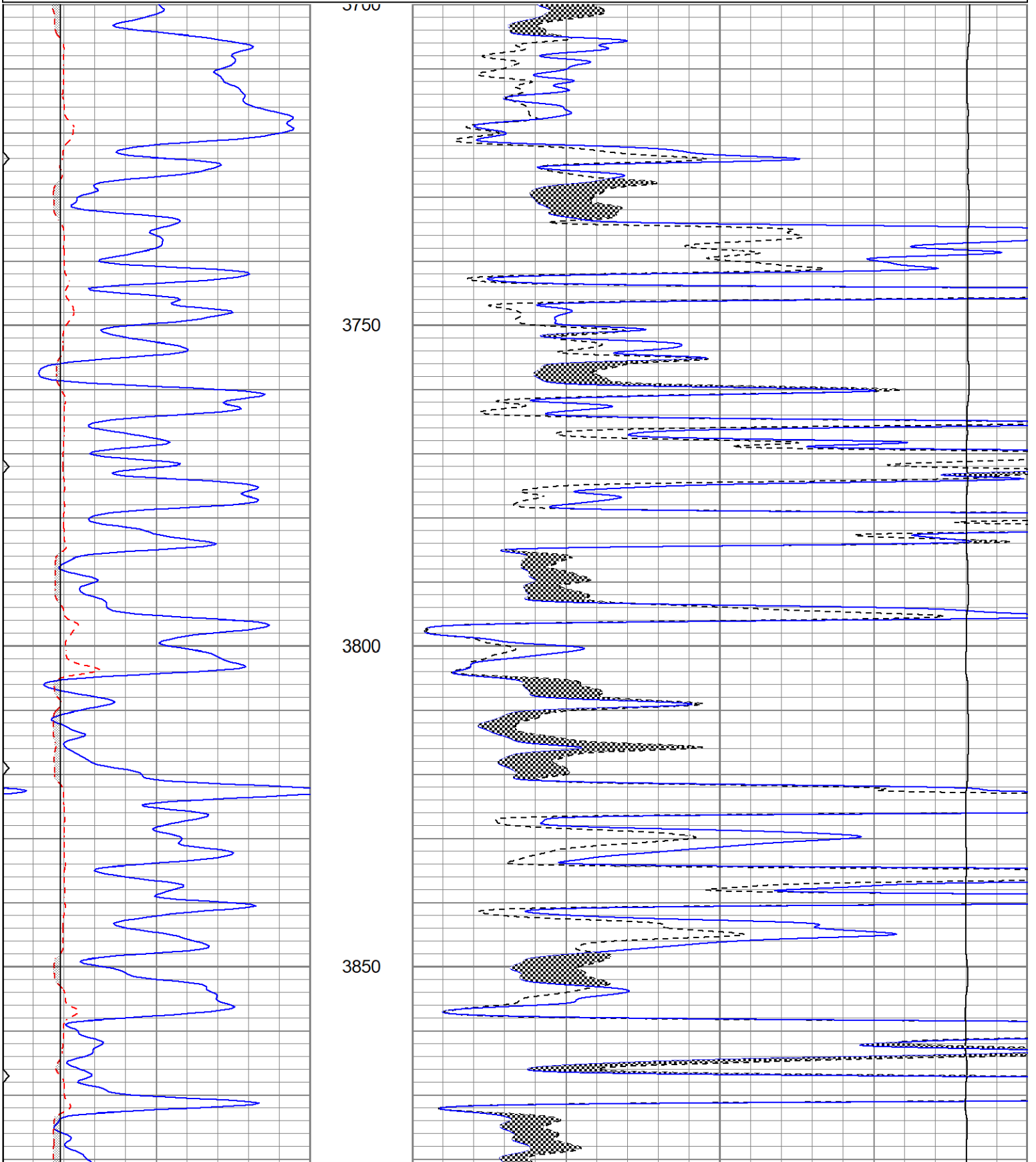


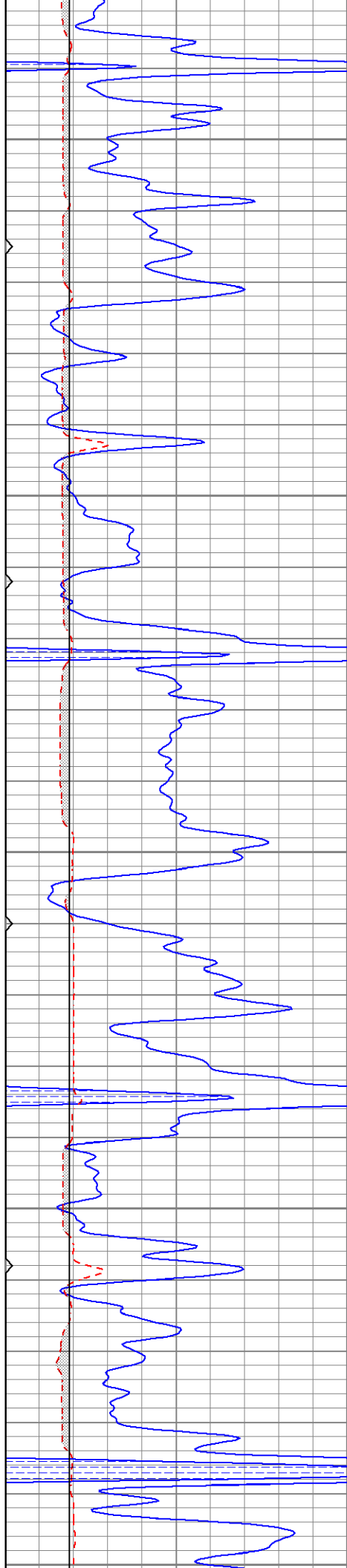
MAIN PASS

Database File berexcolygeros#1oh.db  
 Dataset Pathname pass5.1  
 Presentation Format kml  
 Dataset Creation Wed May 22 15:56:37 2024  
 Charted by Depth in Feet scaled 1:240

0	GR (GAPI)	150
6	MCAL (in)	16
6	BOREID (in)	16
0	MINMK	50

0	MN 2" (Ohm-m)	20
0	MI 1" (Ohm-m)	20
10000	LTEN (lb)	0





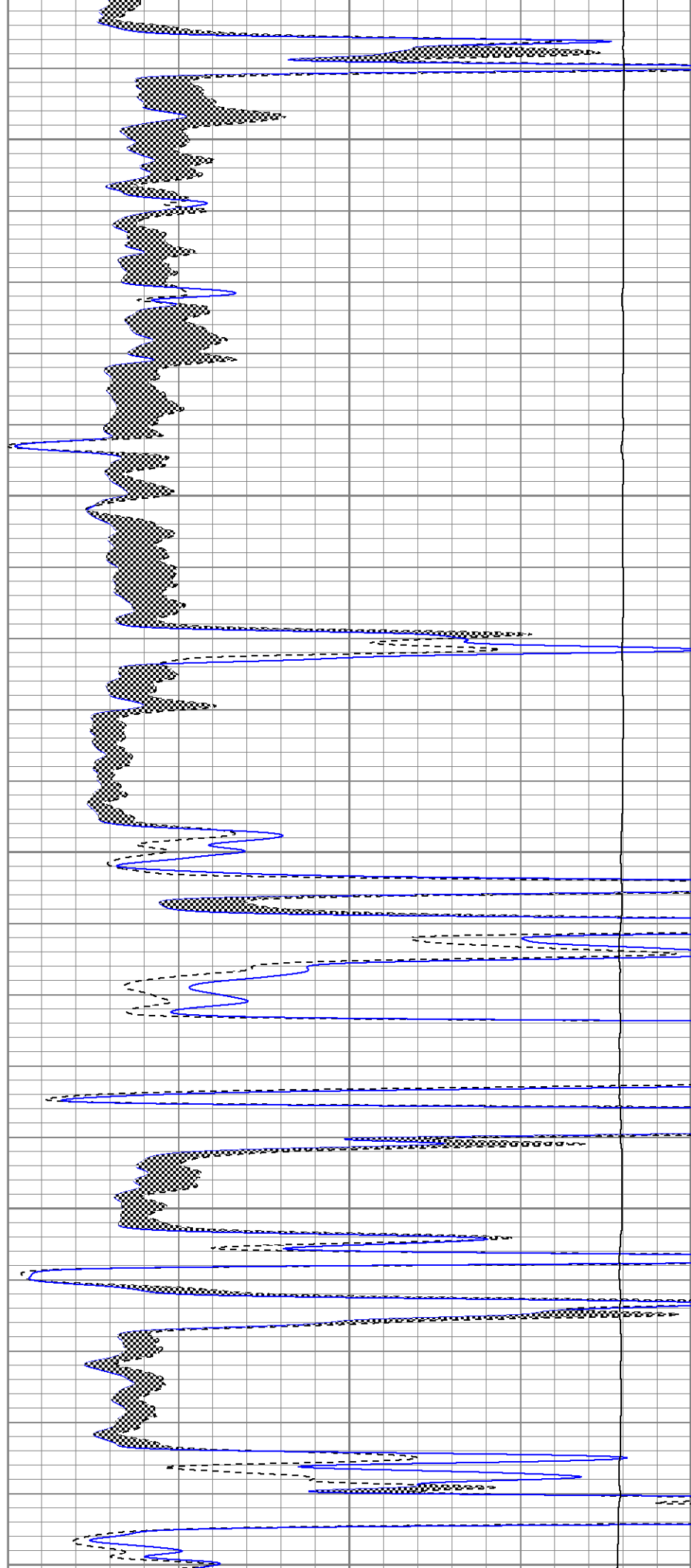
3900

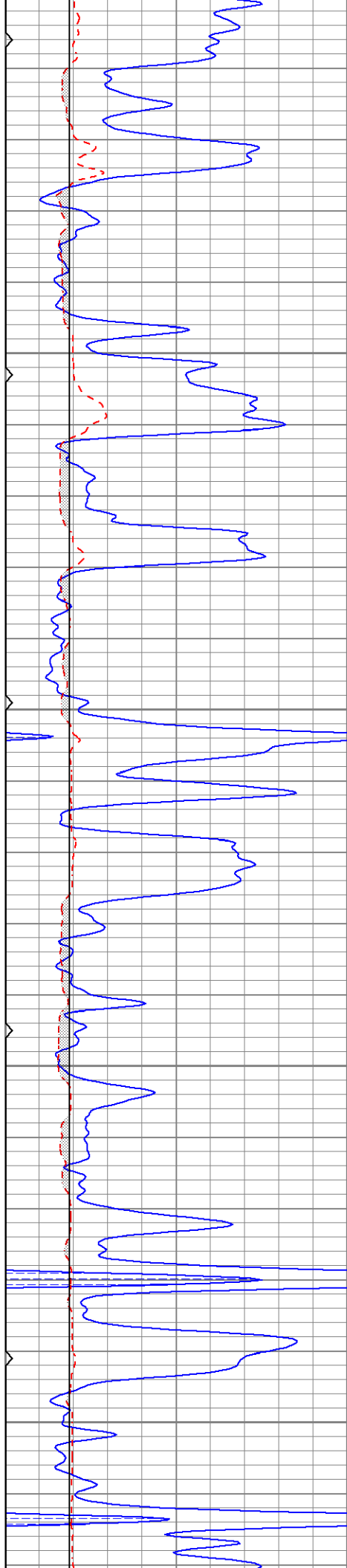
3950

4000

4050

4100





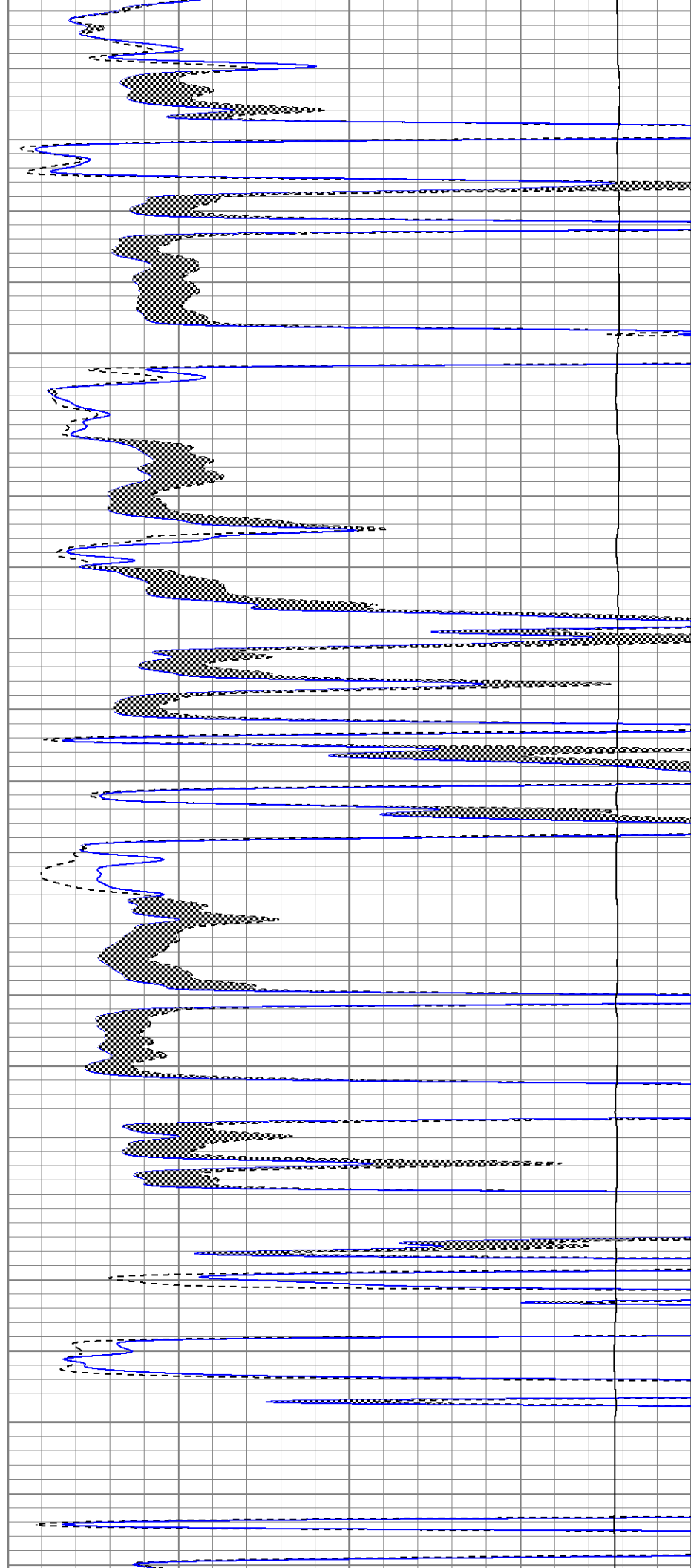
4100

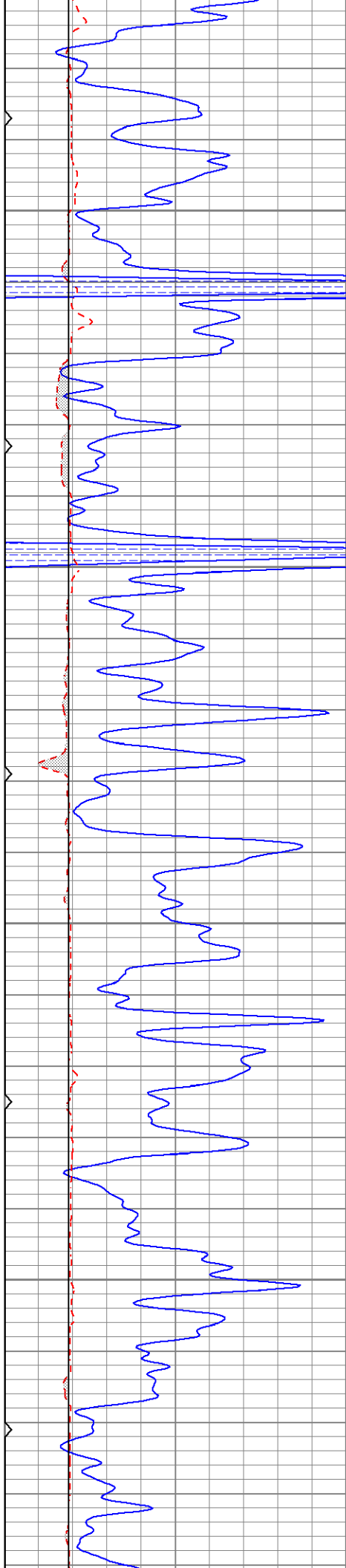
4150

4200

4250

4300



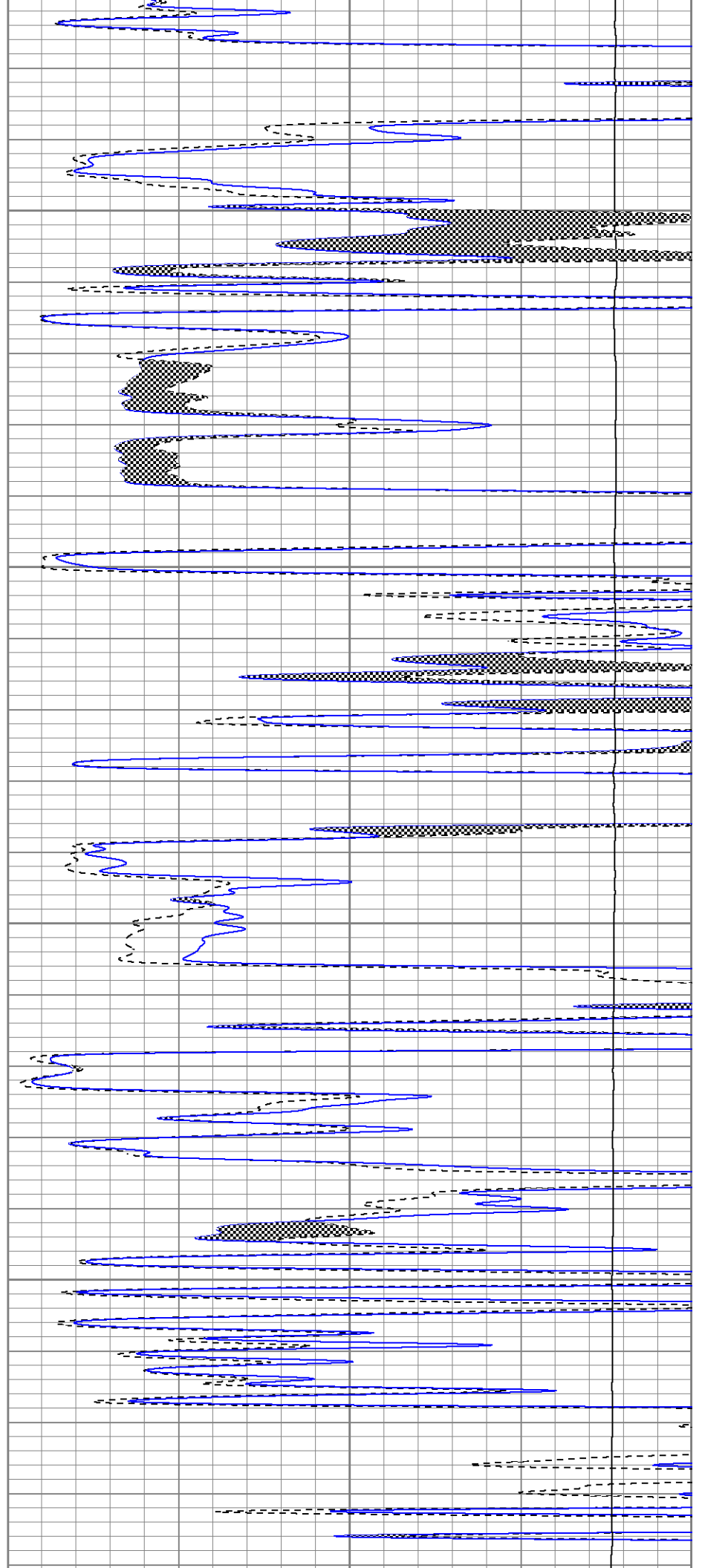


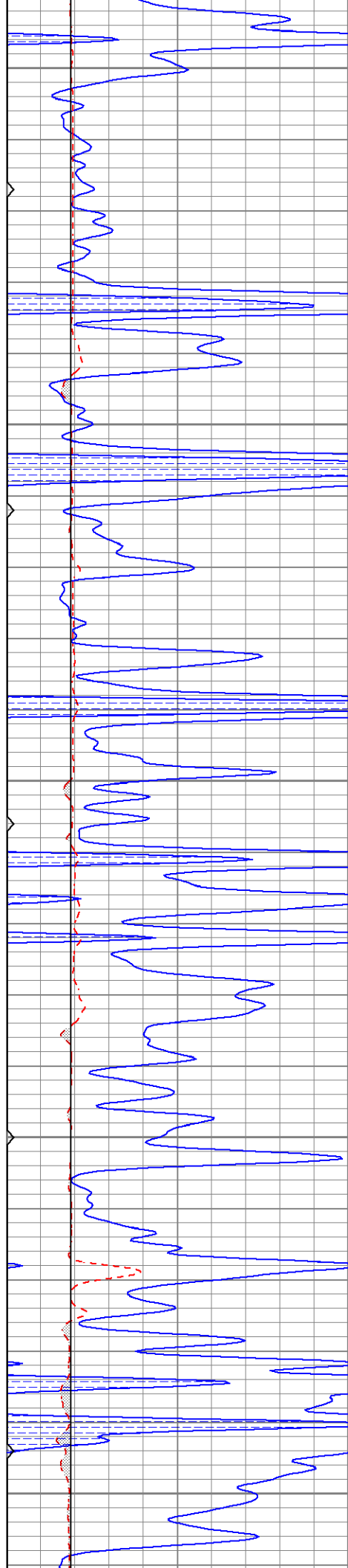
4350

4400

4450

4500





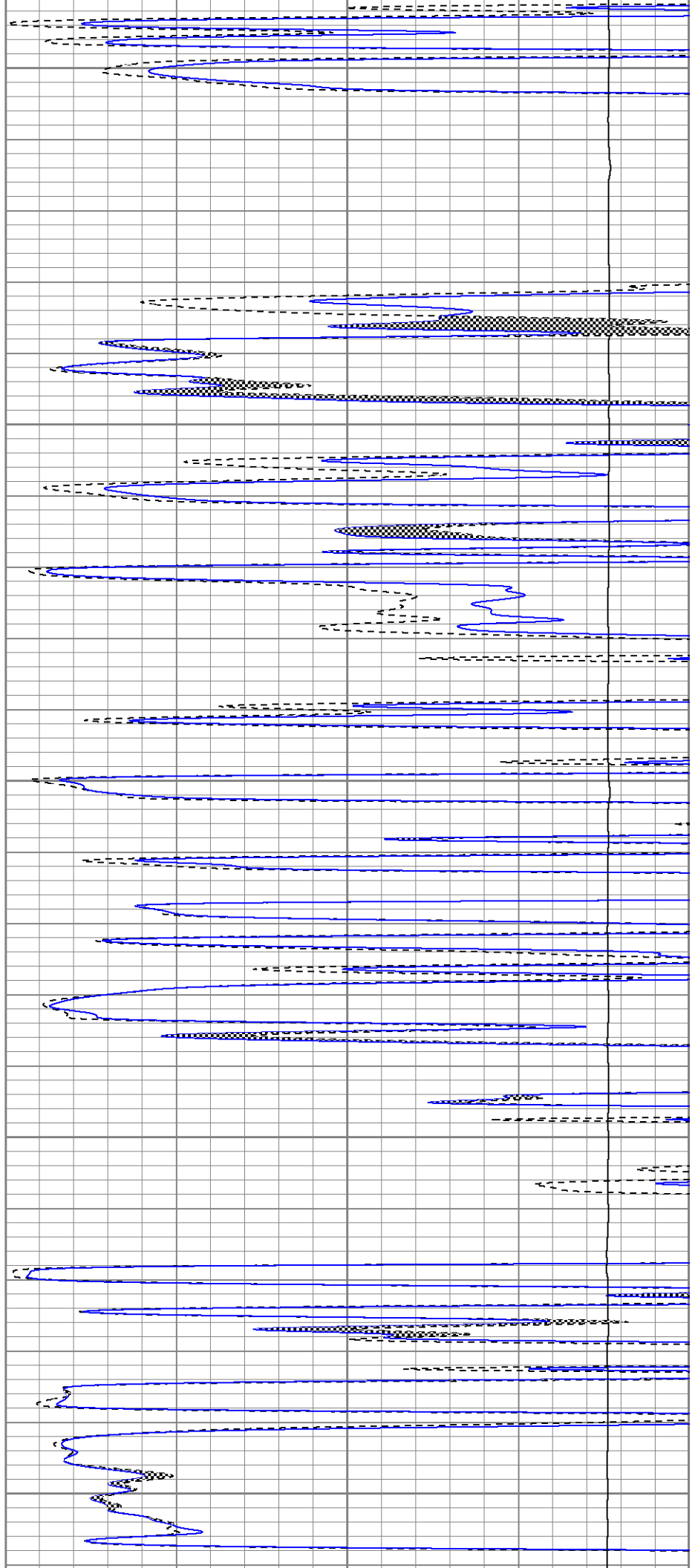
4550

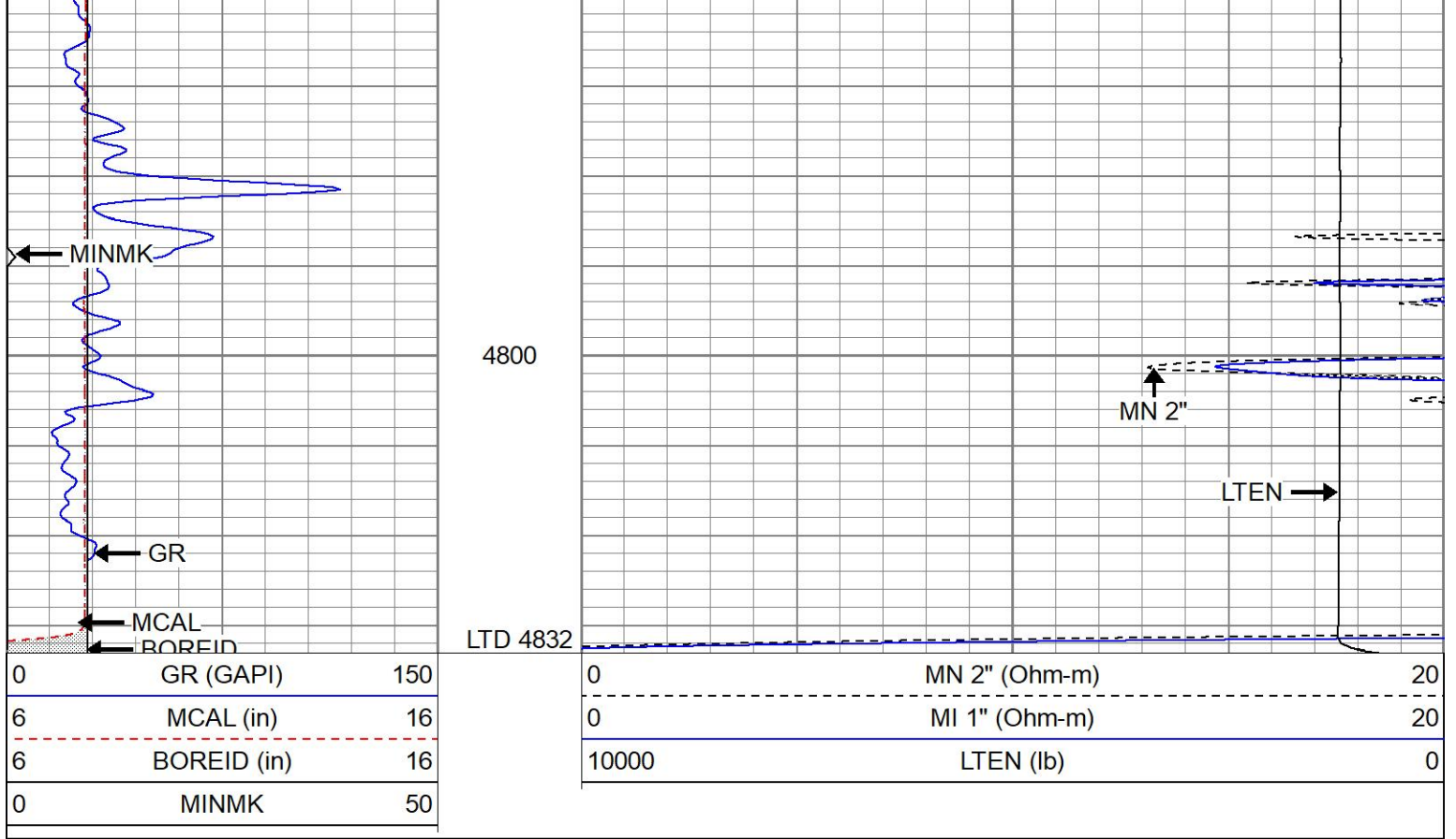
4600

4650

4700

4750

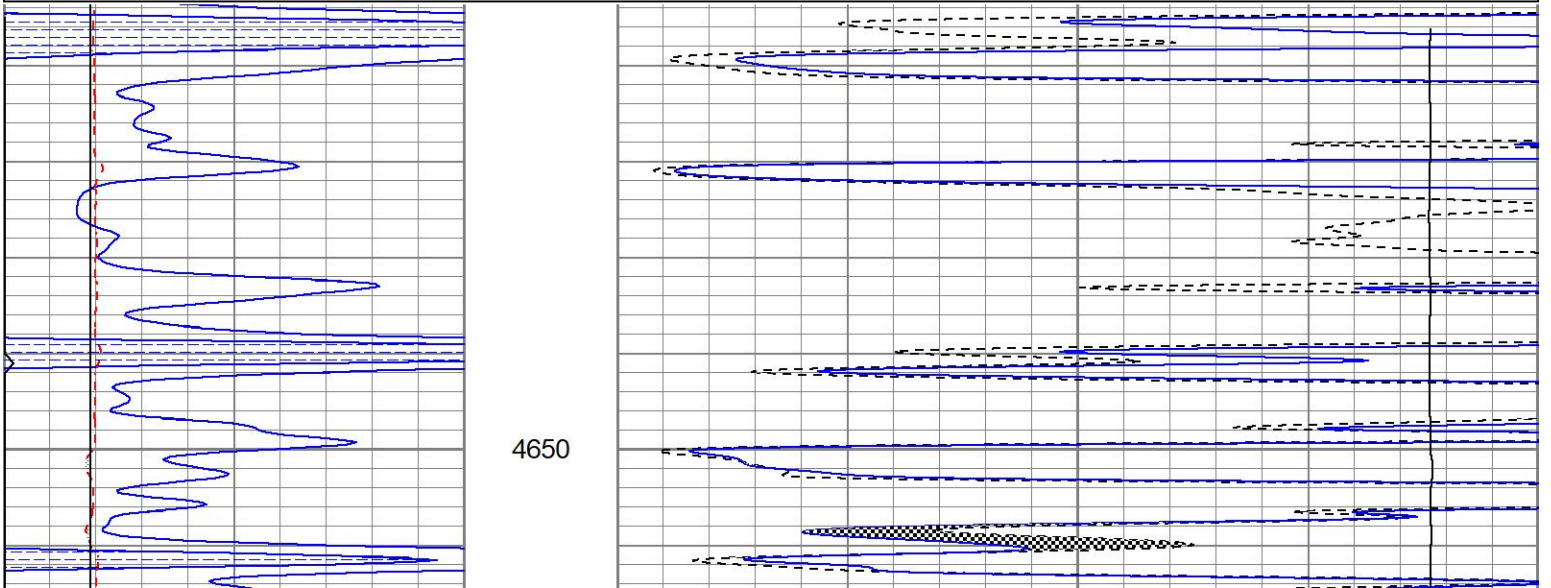


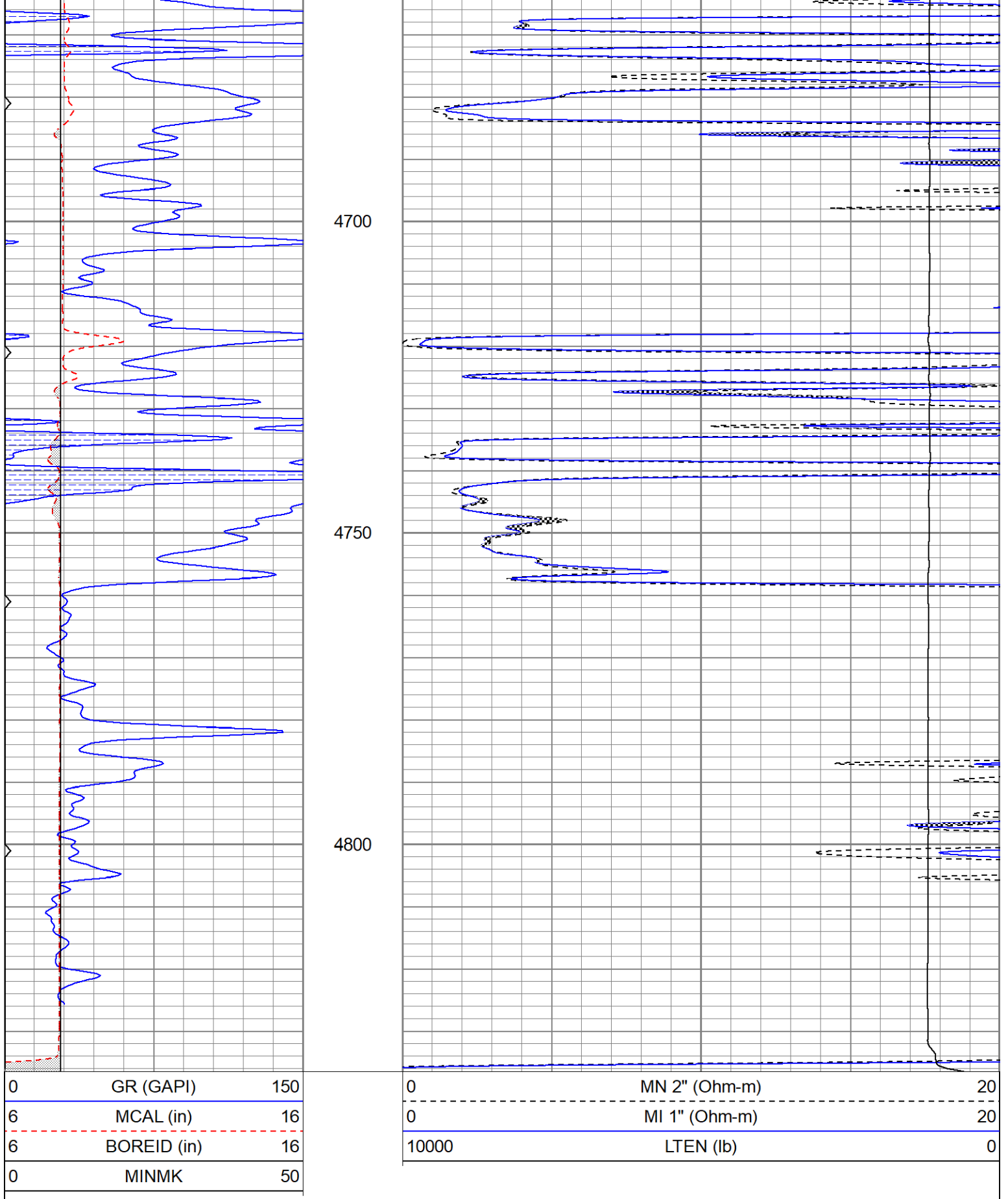


# REPEAT SECTION

Database File berexcolygeros#1oh.db  
 Dataset Pathname pass4  
 Presentation Format kml  
 Dataset Creation Wed May 22 15:18:11 2024  
 Charted by Depth in Feet scaled 1:240

0	GR (GAPI)	150	0	MN 2" (Ohm-m)	20
6	MCAL (in)	16	0	MI 1" (Ohm-m)	20
6	BOREID (in)	16	10000	LTEN (lb)	0
0	MINMK	50			





Calibration Report

Database File berexcolygeros#1oh.db  
 Dataset Pathname pass4  
 Dataset Creation Wed May 22 15:18:11 2024

Microlog Calibration Report

Serial-Model:  
Performed:

G21-Pengo  
Wed May 22 15:15:58 2024

	Readings			References			Results	
	Zero	Cal		Zero	Cal		m	b
Normal	0.0197	0.1164	V	0.0000	10.0000	Ohm-m	103.4180	-2.0328
Inverse	0.0141	0.1419	V	0.0000	10.0000	Ohm-m	78.1997	-1.0990
Caliper	2.4531	4.9625	V	7.9000	13.8000	in	2.3511	2.1325

Gamma Ray Calibration Report

Serial Number: 2001  
Tool Model: OH  
Performed: Sat Nov 11 18:52:32 2023

Calibrator Value: 1.0 GAPI

Background Reading: 0.0 cps  
Calibrator Reading: 1.0 cps

Sensitivity: 0.8200 GAPI/cps