



DUAL INDUCTION LOG

Company BEREXCO LLC.
Well LYGEROS #1
Field ELAINE
County LOGAN
State KANSAS

Company BEREXCO LLC.
Well LYGEROS #1
Field ELAINE
County LOGAN State KANSAS

Location: API #: 15-109-21673
990 FNL & 2310 FEL
SEC 2 TWP 12S RGE 34W
Permanent Datum Ground Level Elevation 3203
Log Measured From KB 10' AGL
Drilling Measured From KB
Other Services
ML
CDNL
Elevation
K.B. 3213
D.F. 3211
G.L. 3203

Date	5/22/24		
Run Number	One		
Depth Driller	4830		
Depth Logger	4832		
Bottom Logged Interval	4830		
Top Log Interval	00		
Casing Driller	8 5/8"@407'		
Casing Logger	407		
Bit Size	7 7/8"		
Type Fluid in Hole	Chemical		
Density / Viscosity	9.4/60		
pH / Fluid Loss	10.5/8.0		
Source of Sample	Pit		
Rm @ Meas. Temp	1.75@70degf		
Rmf @ Meas. Temp	1.31@70degf		
Rmc @ Meas. Temp	2.10@70degf		
Source of Rmf / Rmc	Calculated		
Rm @ BHT	1.04@117degf		
Time Circulation Stopped	11:00 AM		
Time Logger on Bottom	1:30 PM		
Maximum Recorded Temperature	117degf		
Equipment Number	T-605		
Location	Hays, KS.		
Recorded By	GUS PFANENSTIEL		
Witnessed By	KEATON JONES		

<<< Fold Here >>>

All interpretations are opinions based on inferences from electrical or other measurements and we cannot and do not guarantee the accuracy or correctness of any interpretation, and we shall not, except in the case of gross or willful negligence on our part, be liable or responsible for any loss, costs, damages, or expenses incurred or sustained by anyone resulting from any interpretation made by any of our officers, agents or employees. These interpretations are also subject to our general terms and conditions set out in our current Price Schedule.

Comments

MONUMENT 2 WEST, 4 SOUTH, 1/4 WEST,
SOUTH INTO.

Thanks for using Gemini Wireline LLC
785-625-1182

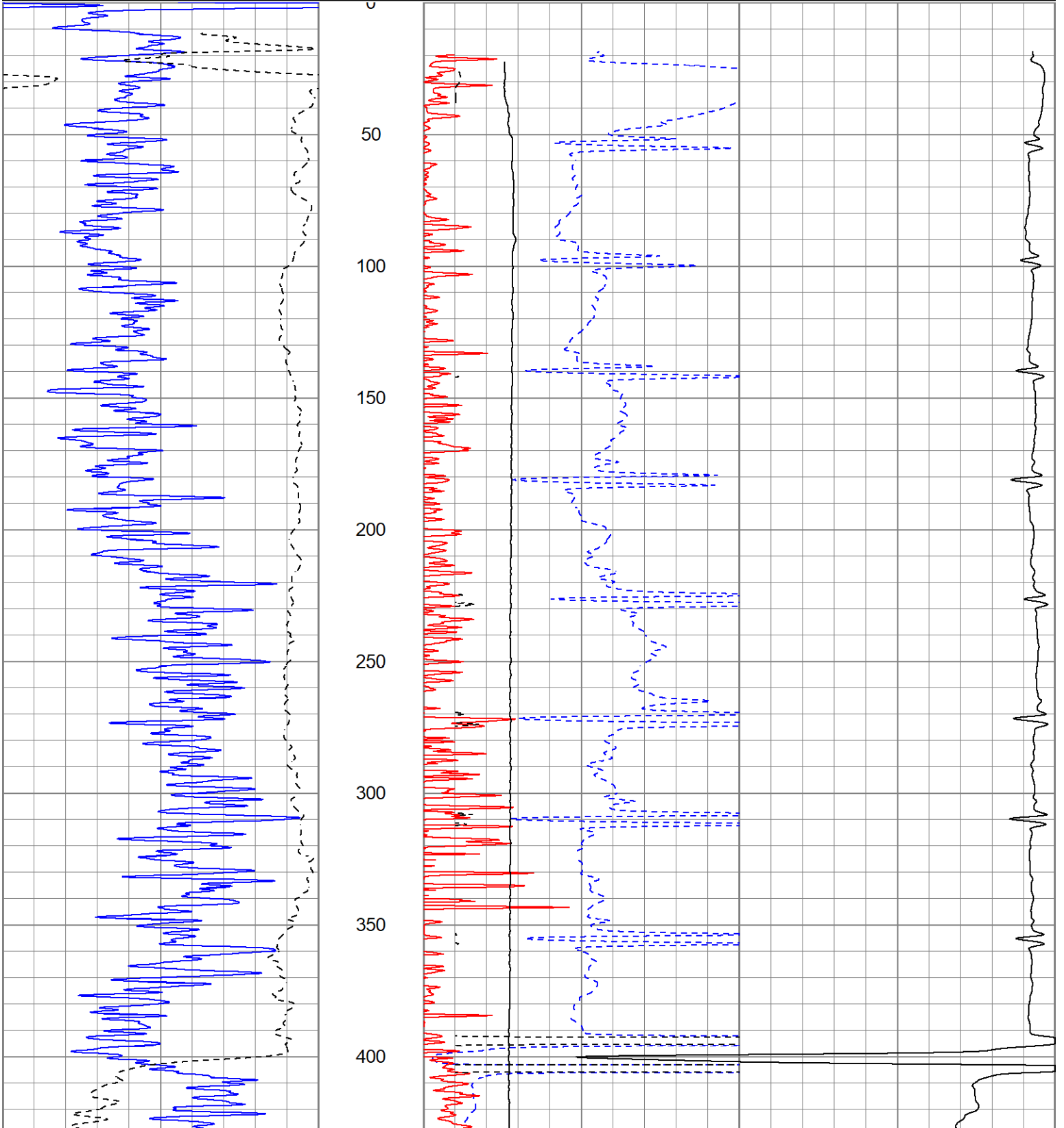


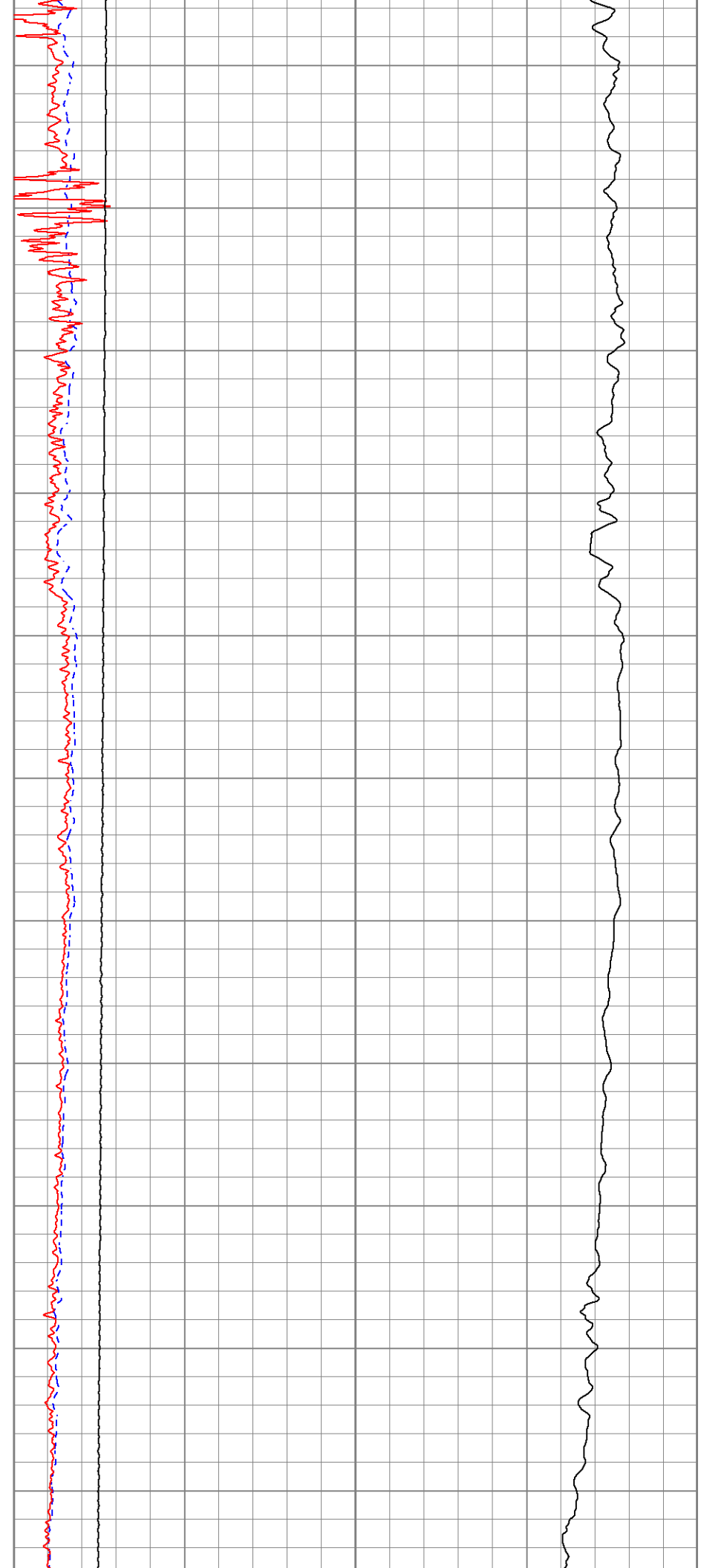
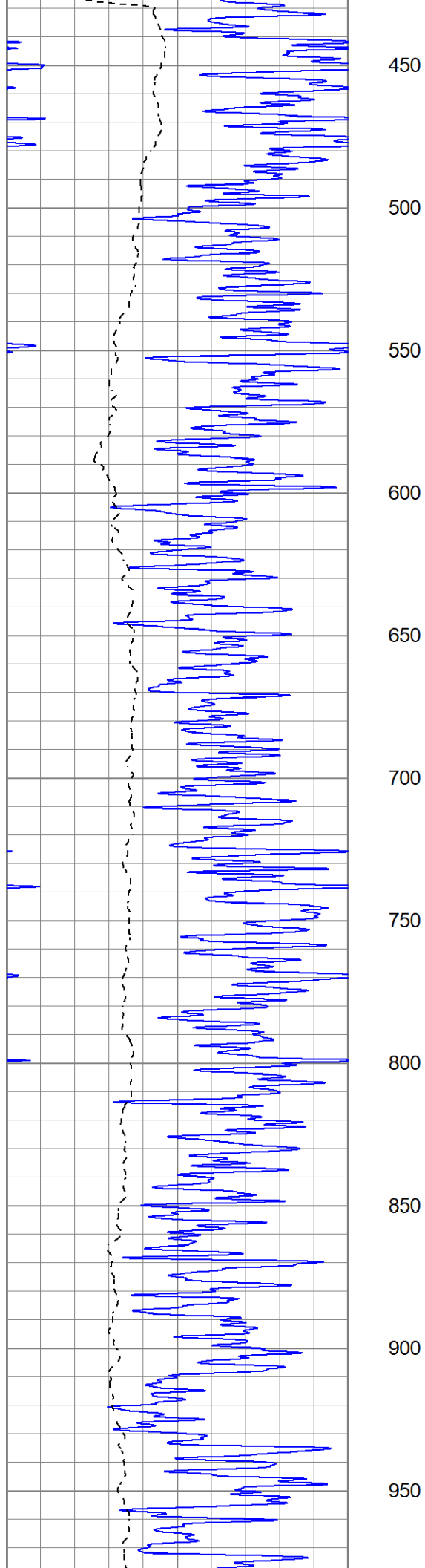
MAIN PASS

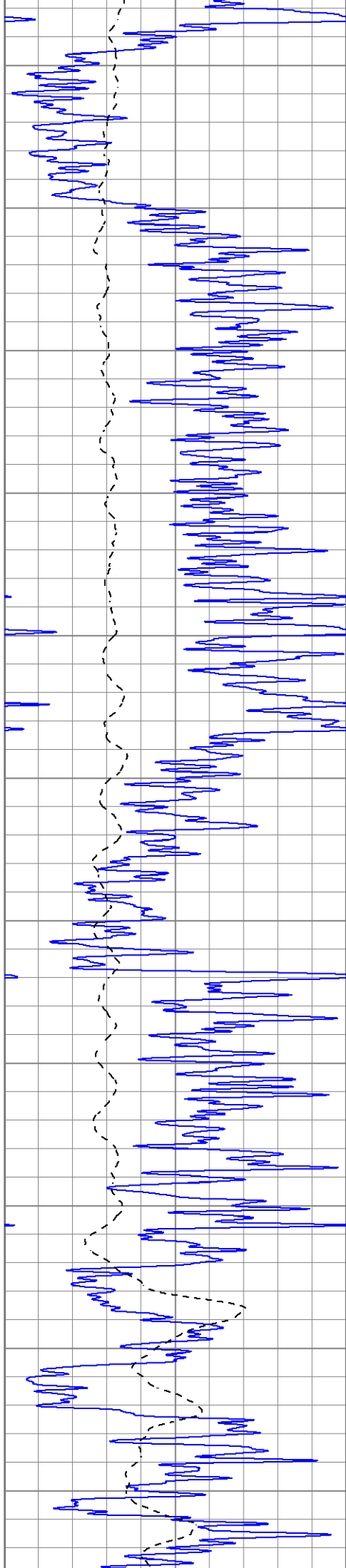
Database File berexcolygeros#1oh.db
 Dataset Pathname pass3.1
 Presentation Format kdillinn
 Dataset Creation Wed May 22 15:03:24 2024
 Charted by Depth in Feet scaled 1:600

0	GR (GAPI)	150
-100	SP (mV)	100

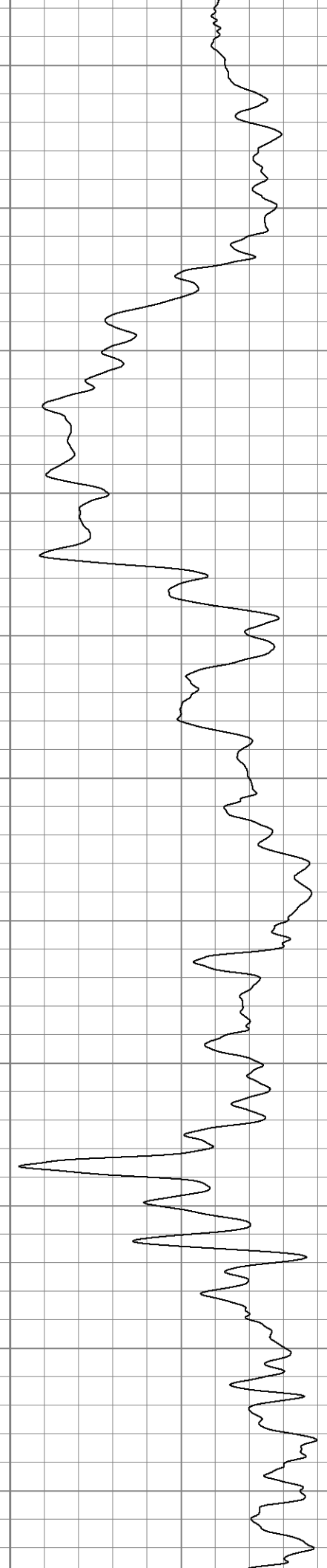
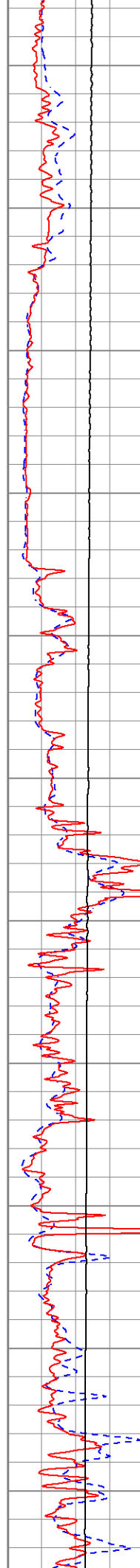
1000	CILD (mmho/m)	0
10000	LTEN (lb)	0
0	RILD (Ohm-m)	50
0	RLL3 (Ohm-m)	50
50	RILD x 10 (Ohm-m)	500
50	RLL3 x 10 (Ohm-m)	500

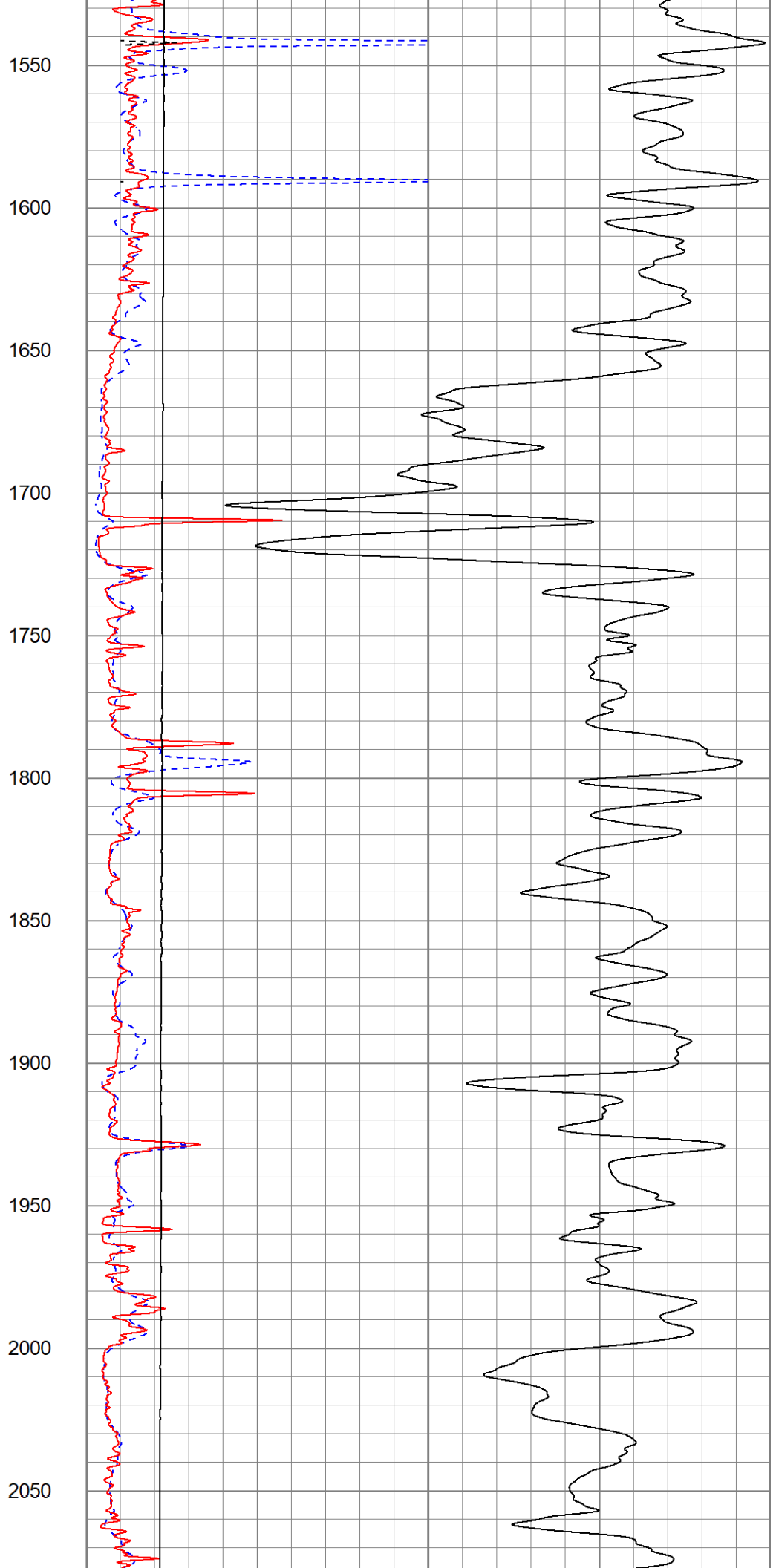
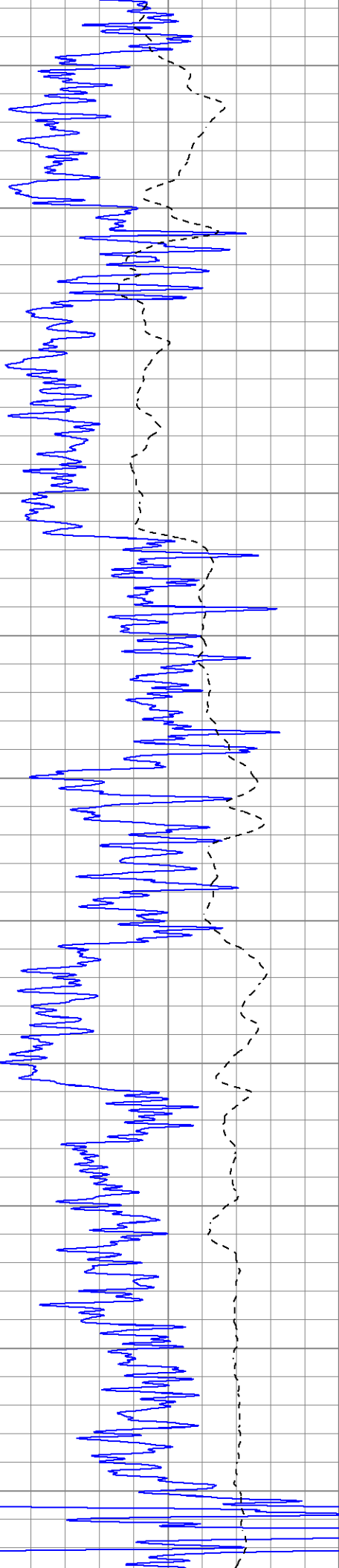


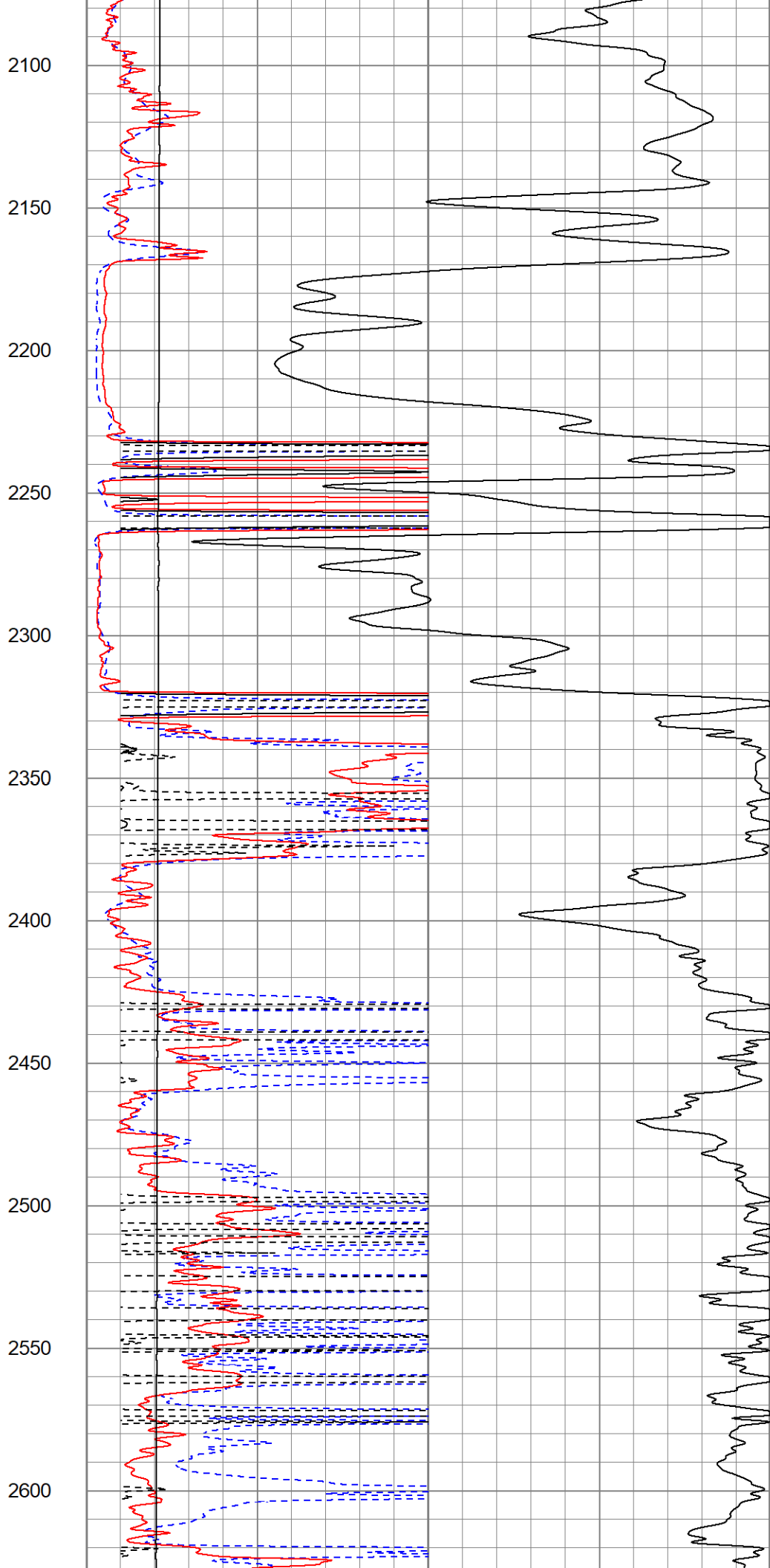
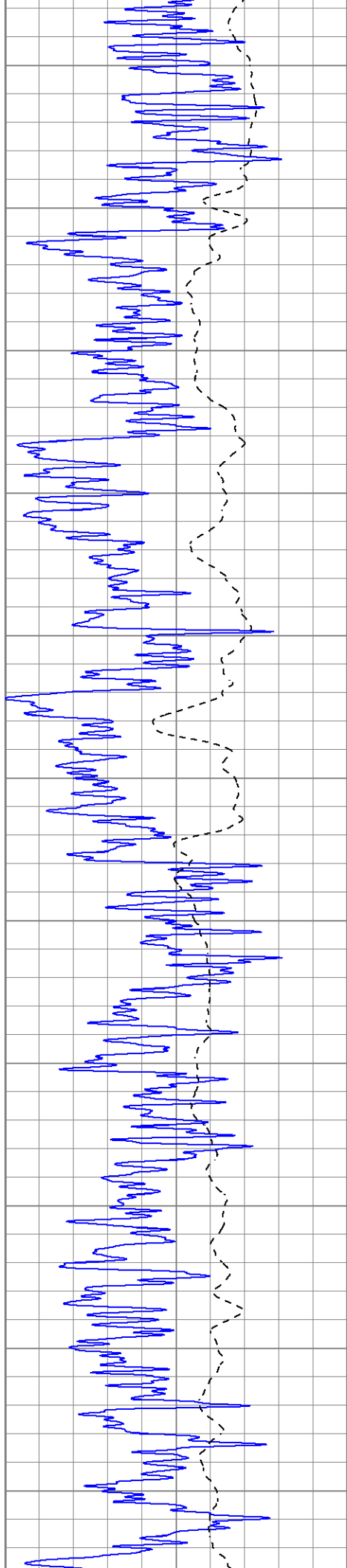


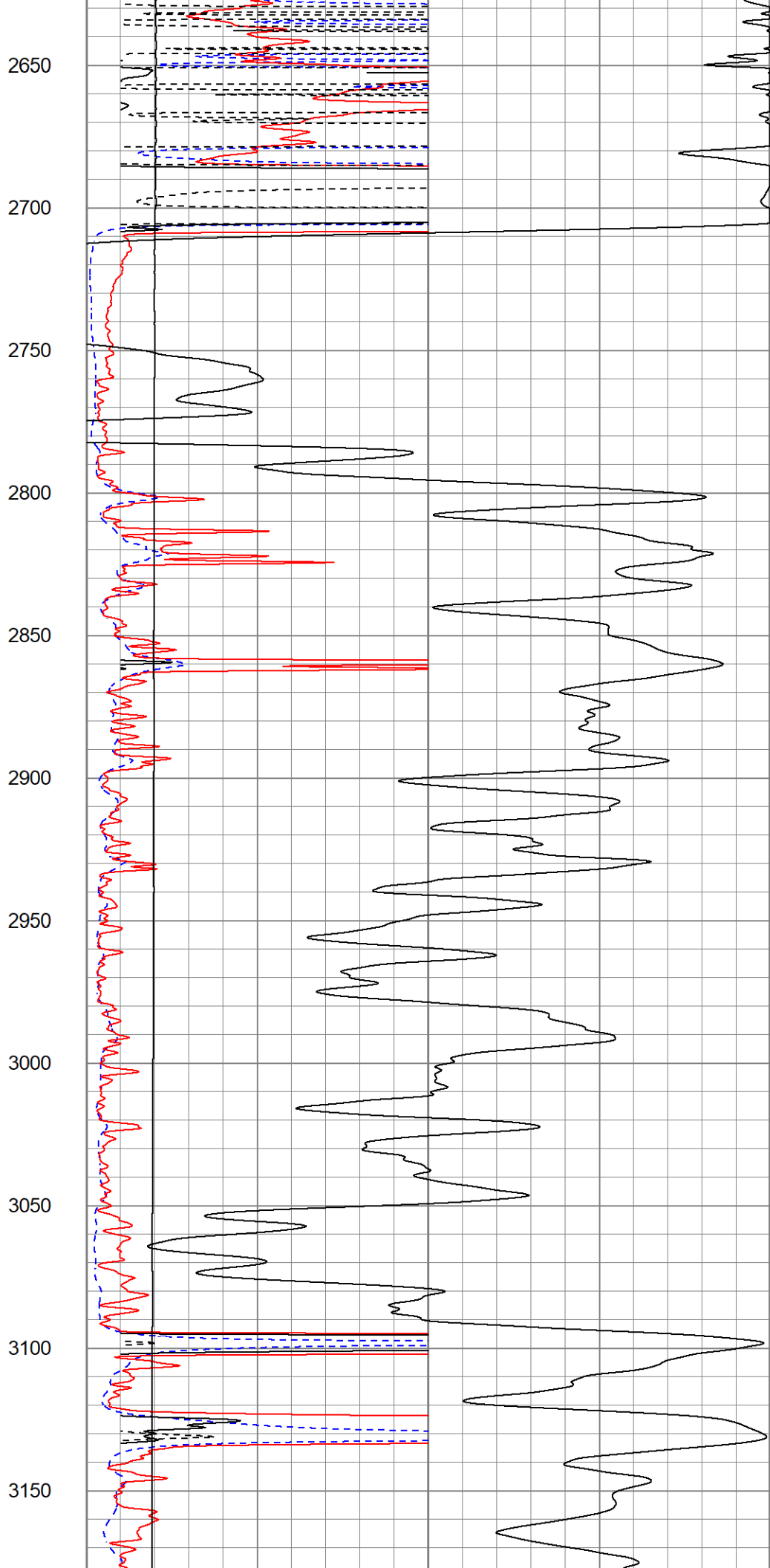


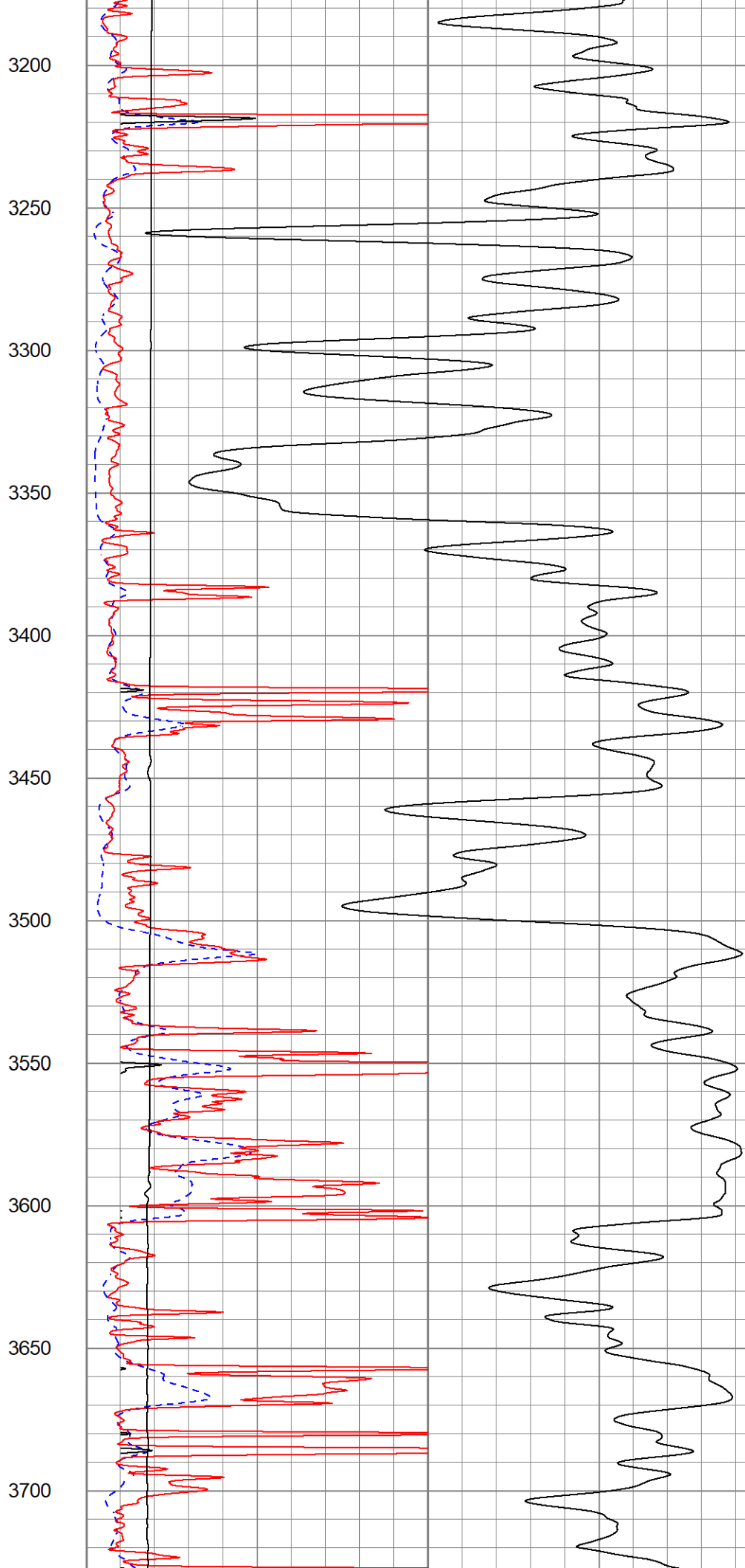
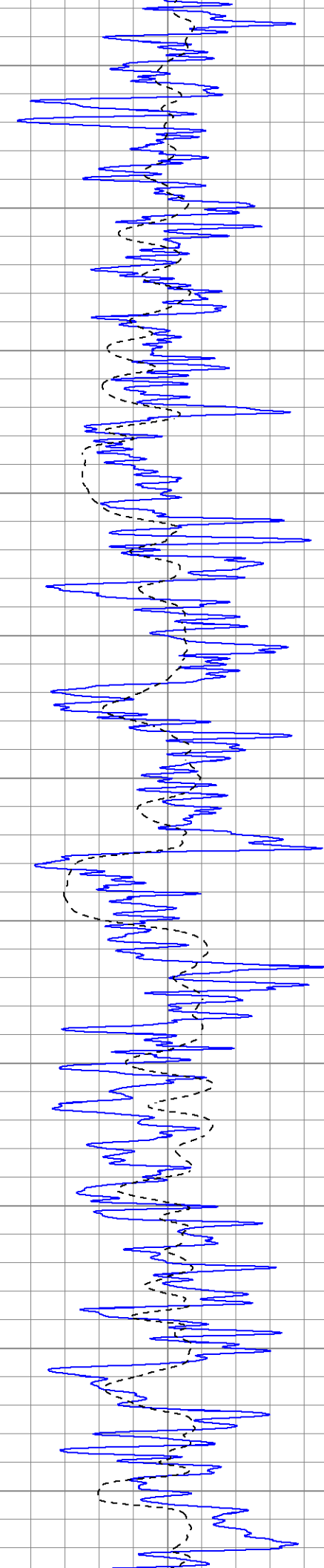
1000
1050
1100
1150
1200
1250
1300
1350
1400
1450
1500

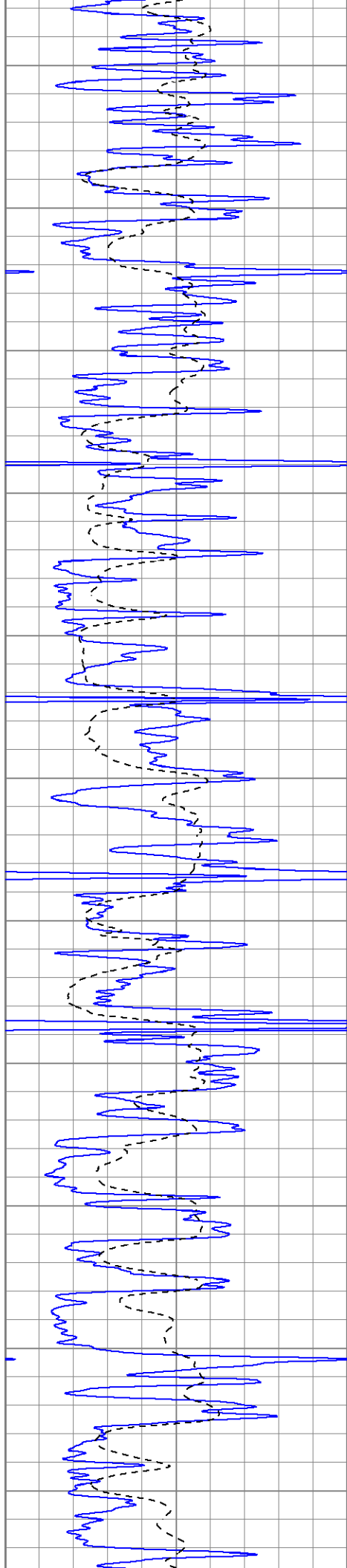












3750

3800

3850

3900

3950

4000

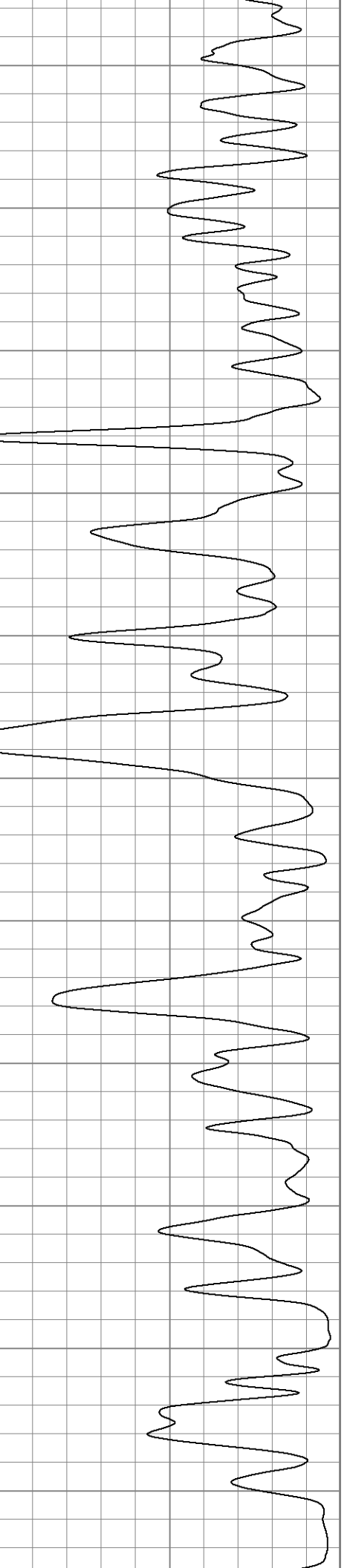
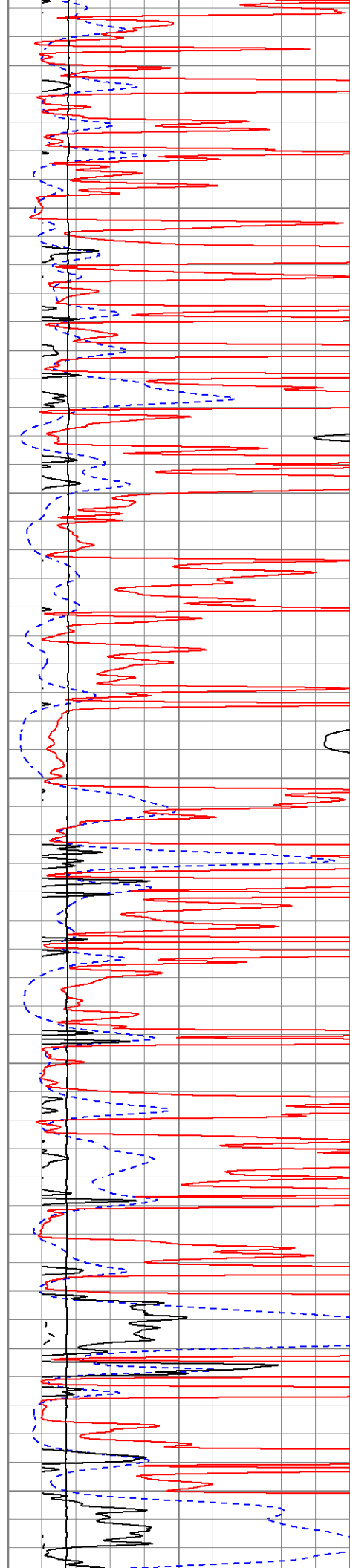
4050

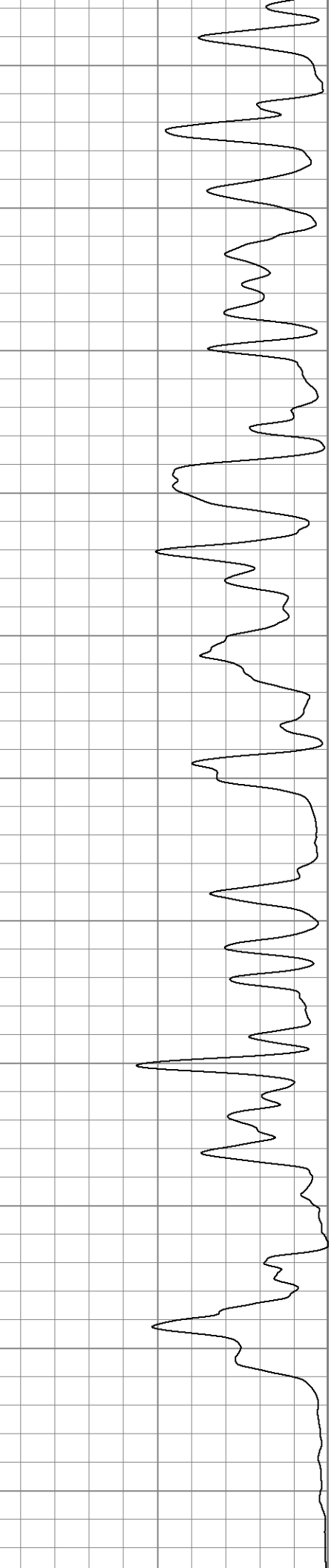
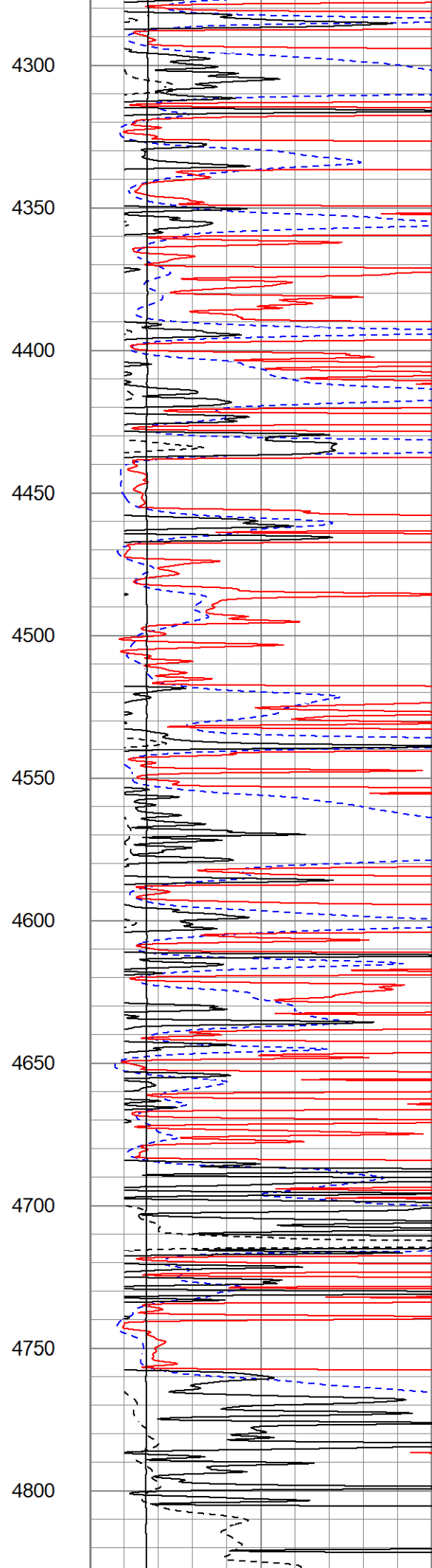
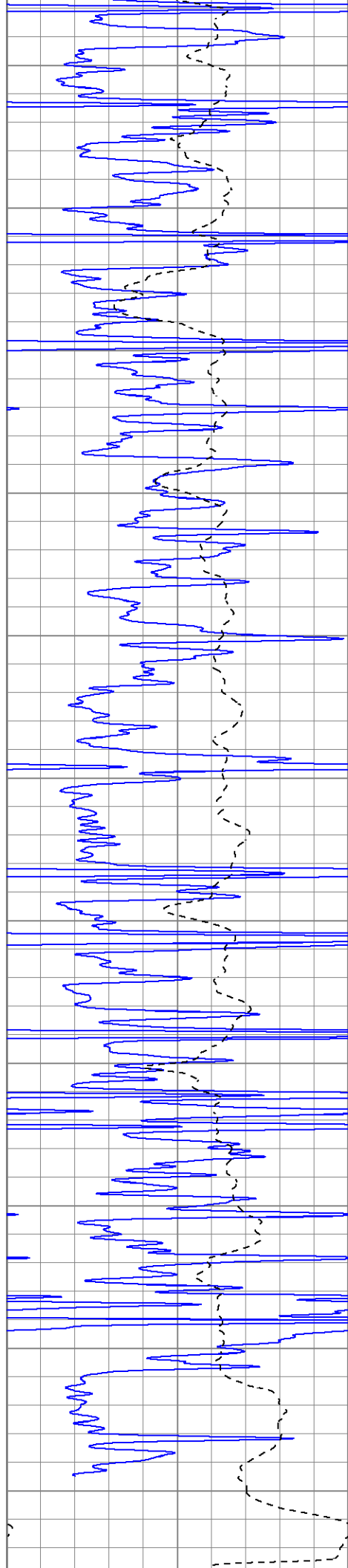
4100

4150

4200

4250





0	GR (GAPI)	150
-100	SP (mV)	100

1000	CILD (mmho/m)	0
10000	LTEN (lb)	0
0	RILD (Ohm-m)	50
0	RLL3 (Ohm-m)	50
50	RILD x 10 (Ohm-m)	500
50	RLL3 x 10 (Ohm-m)	500

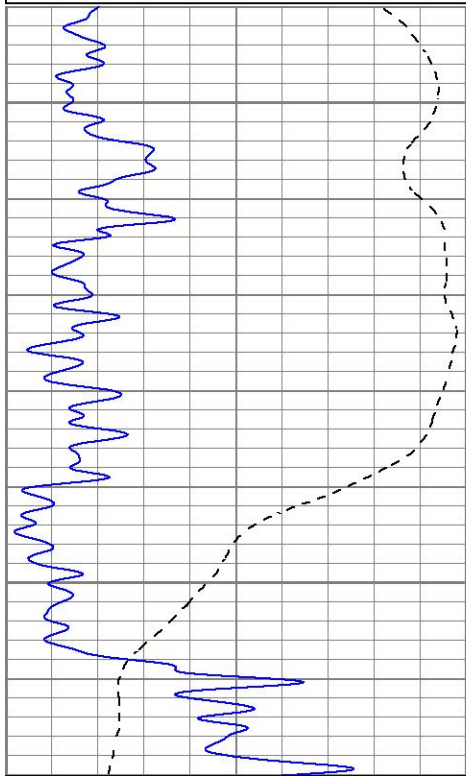


MAIN PASS

Database File berexcolygeros#1oh.db
 Dataset Pathname pass3.1
 Presentation Format kdil
 Dataset Creation Wed May 22 15:03:24 2024
 Charted by Depth in Feet scaled 1:240

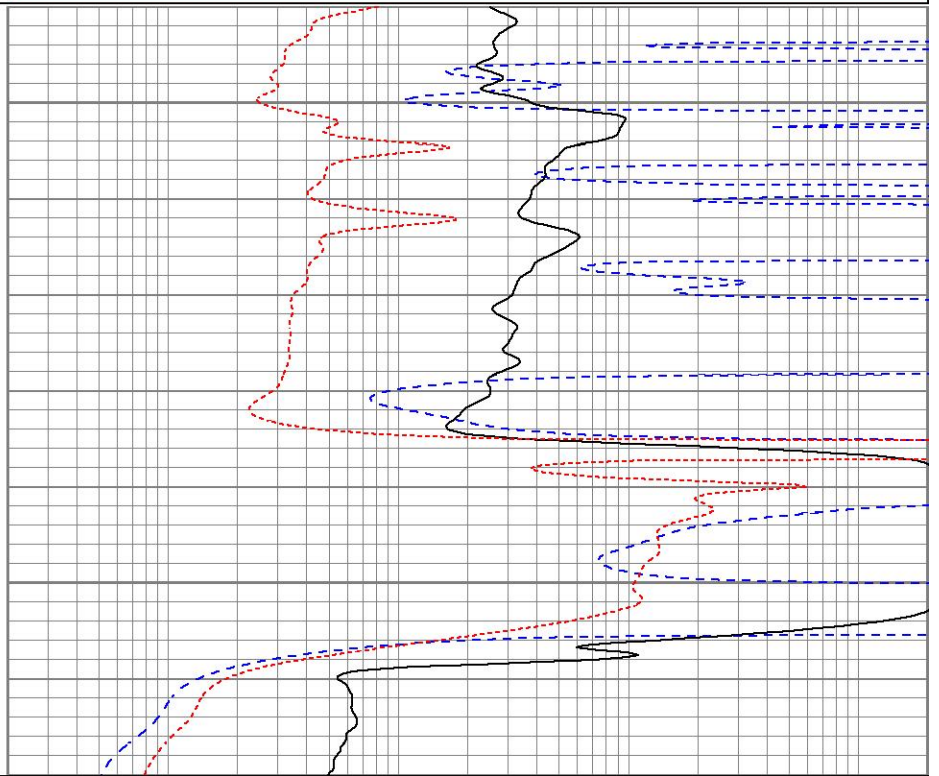
0	GR (GAPI)	150
-100	SP (mV)	100

0.2	RILD (Ohm-m)	2000
0.2	RLL3 (Ohm-m)	2000
0.2	RILM (Ohm-m)	2000



2650

2700



0	GR (GAPI)	150
-100	SP (mV)	100

0.2	RILD (Ohm-m)	2000
0.2	RLL3 (Ohm-m)	2000
0.2	RILM (Ohm-m)	2000



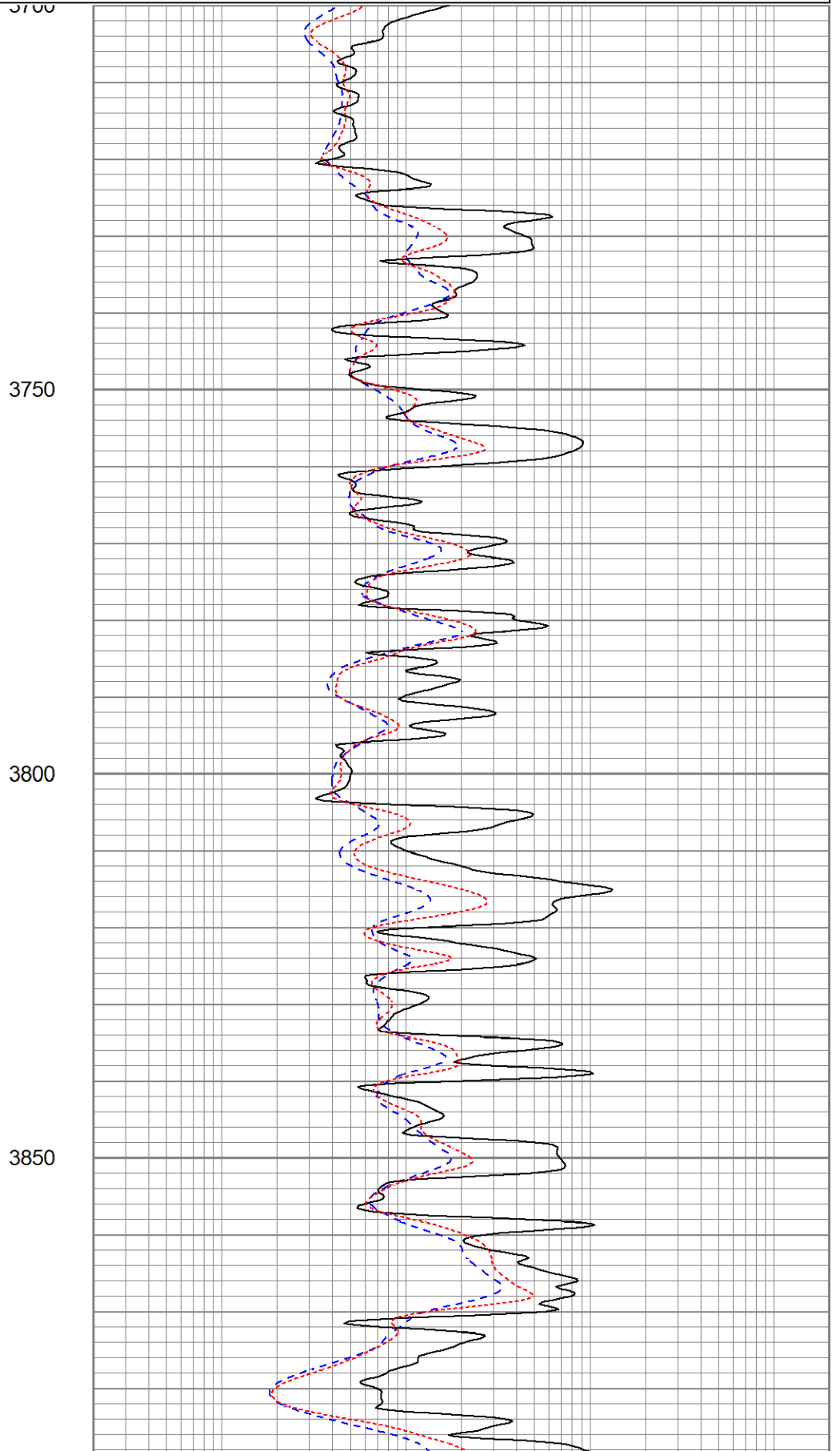
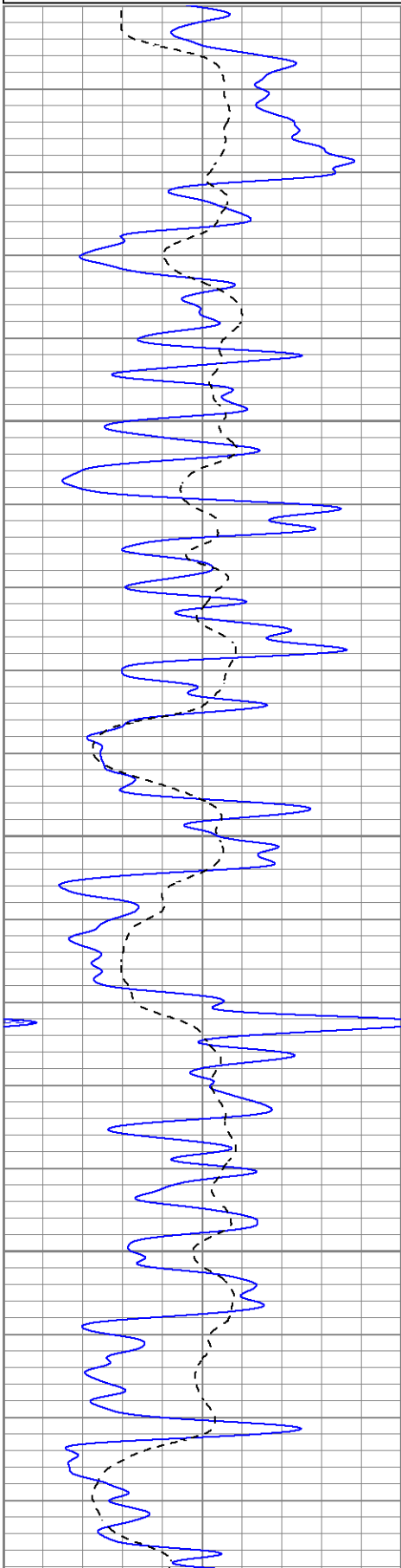
MAIN PASS

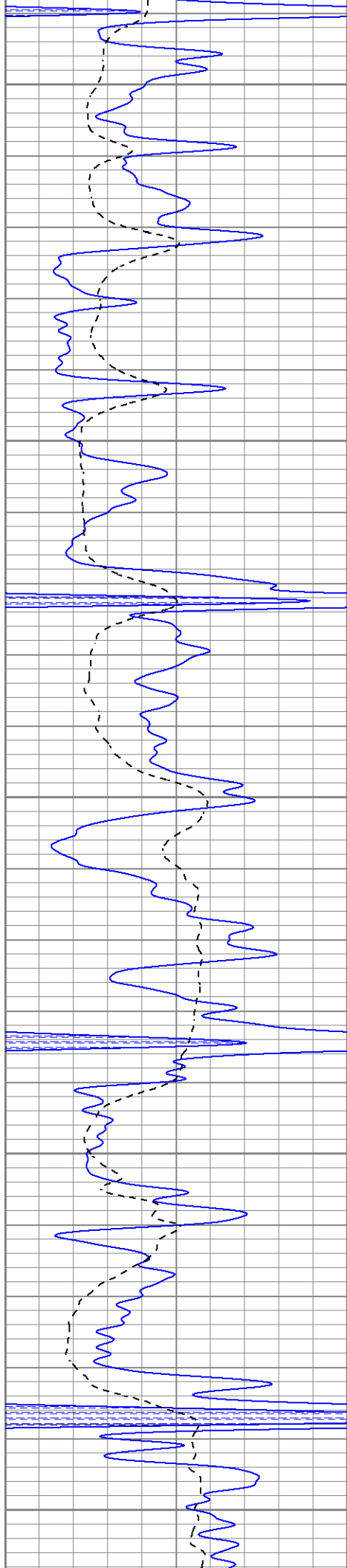
Database File berexcolygeros#1oh.db

Dataset Pathname pass3.1
 Presentation Format kdil
 Dataset Creation Wed May 22 15:03:24 2024
 Charted by Depth in Feet scaled 1:240

0	GR (GAPI)	150
-100	SP (mV)	100

0.2	RILD (Ohm-m)	2000
0.2	RLL3 (Ohm-m)	2000
0.2	RILM (Ohm-m)	2000





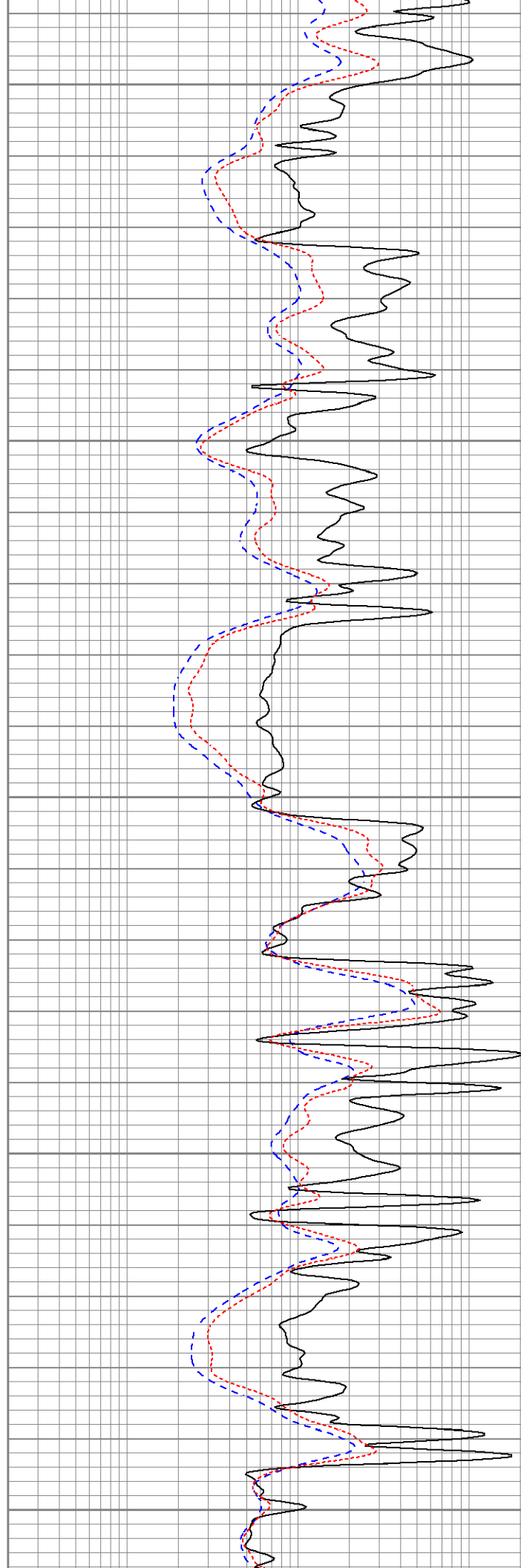
3900

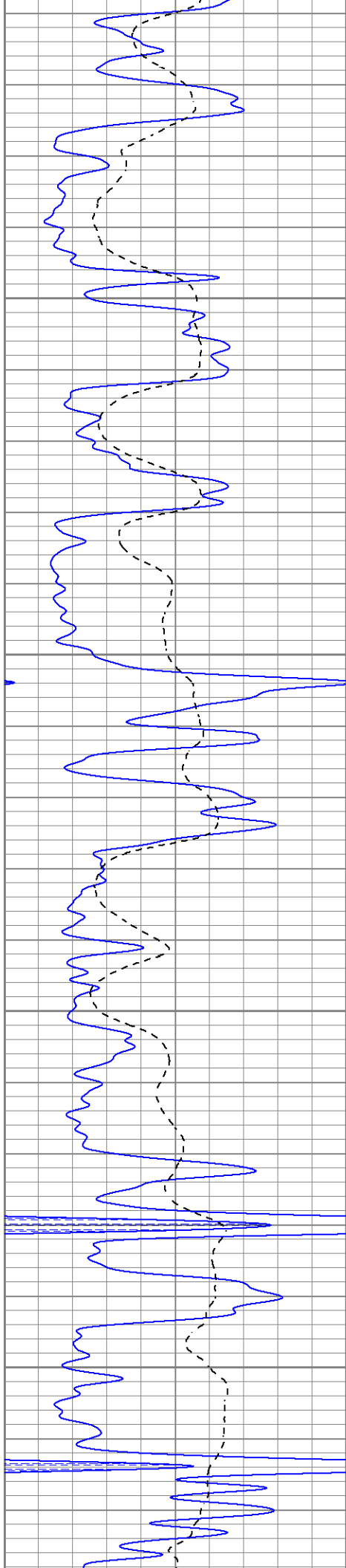
3950

4000

4050

4100



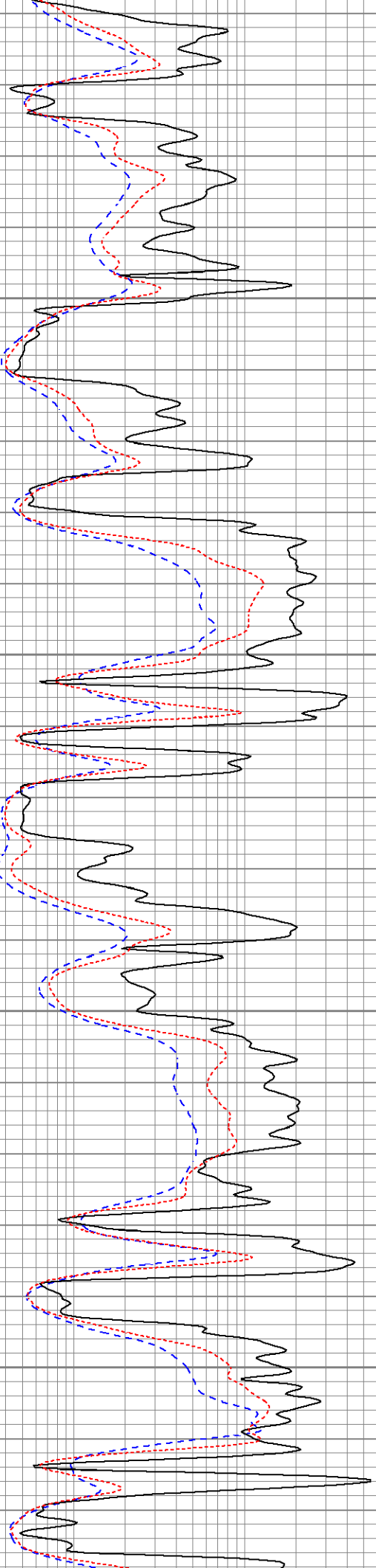


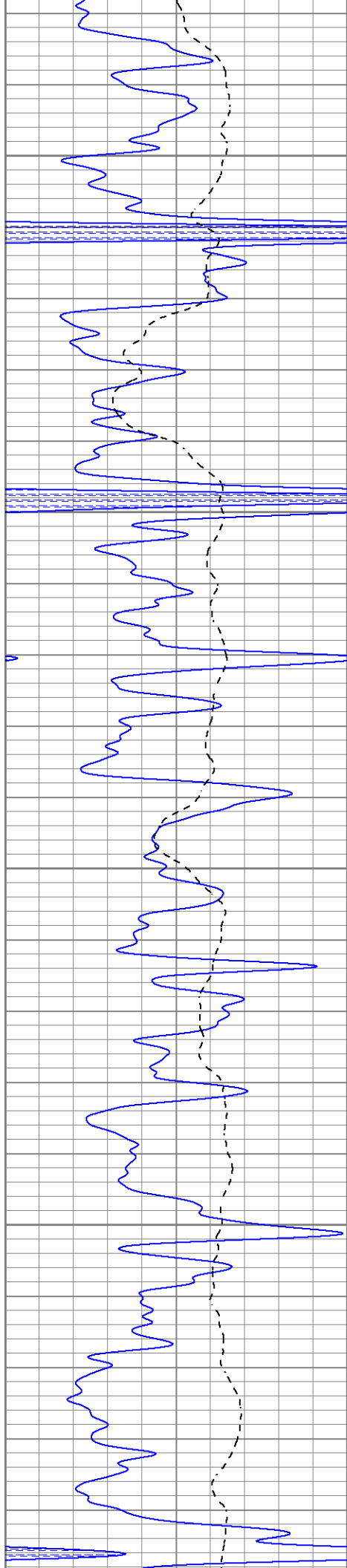
4150

4200

4250

4300



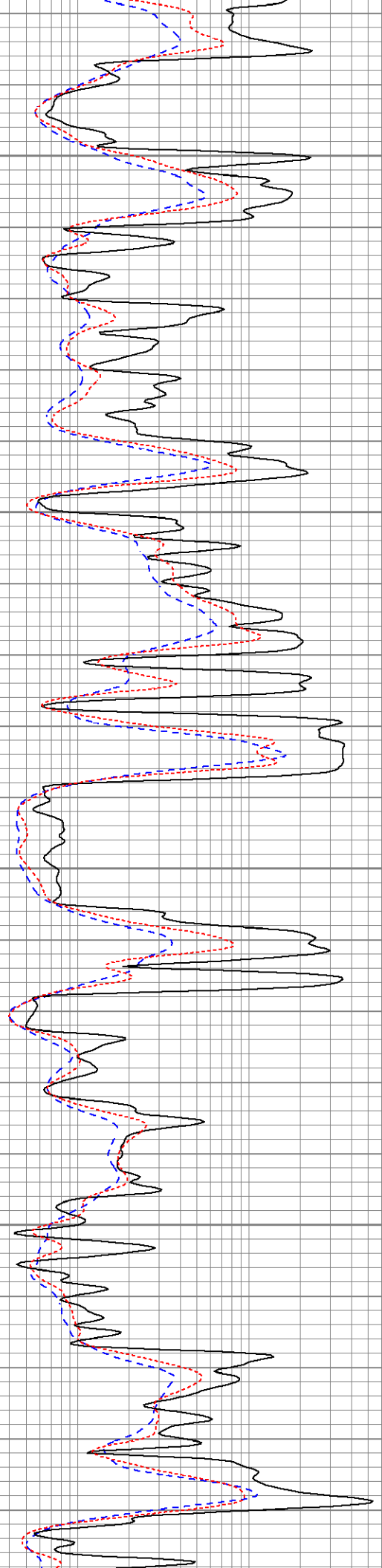


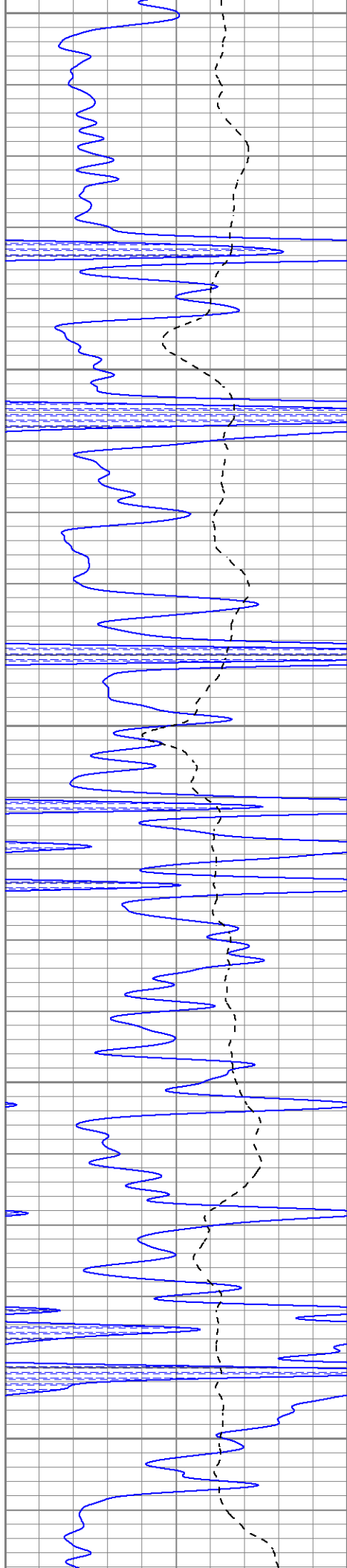
4350

4400

4450

4500





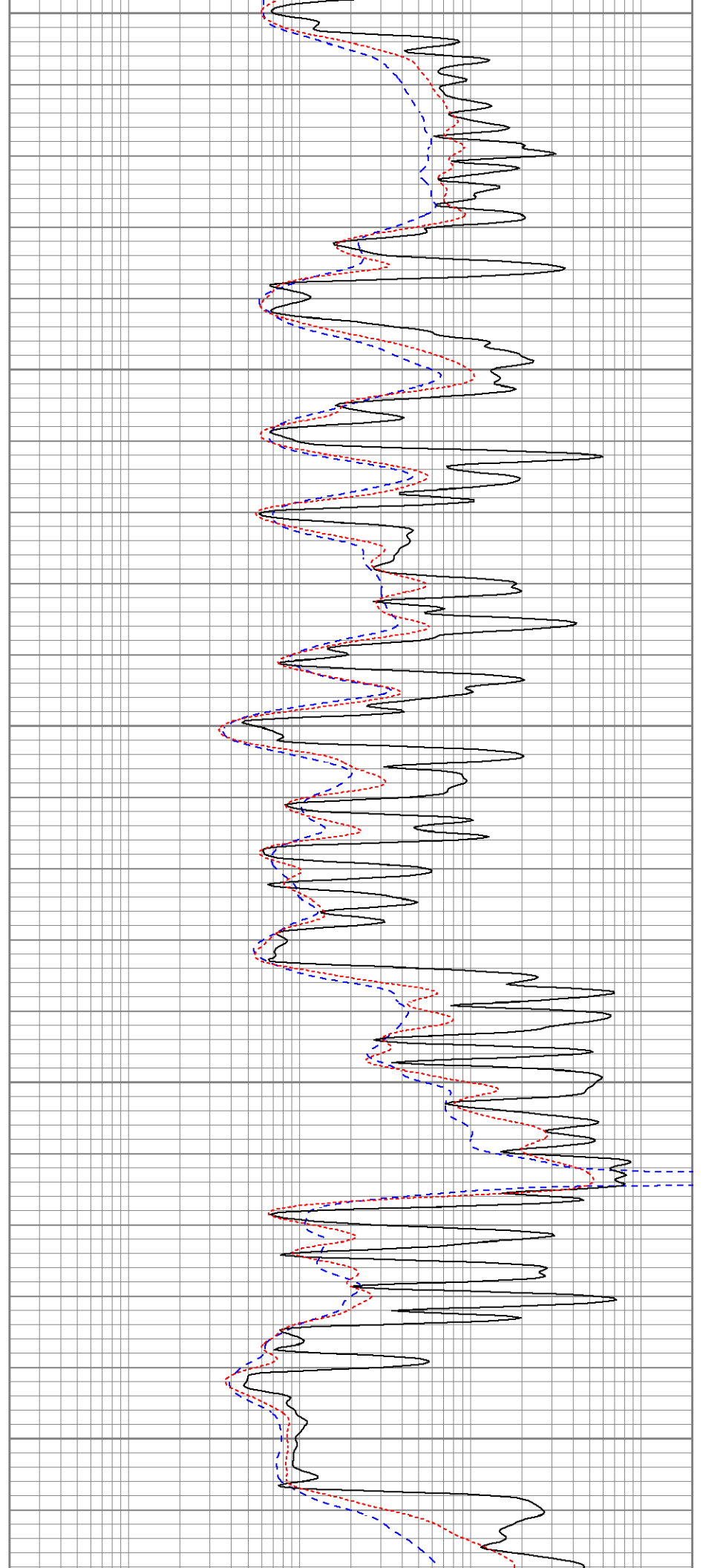
4550

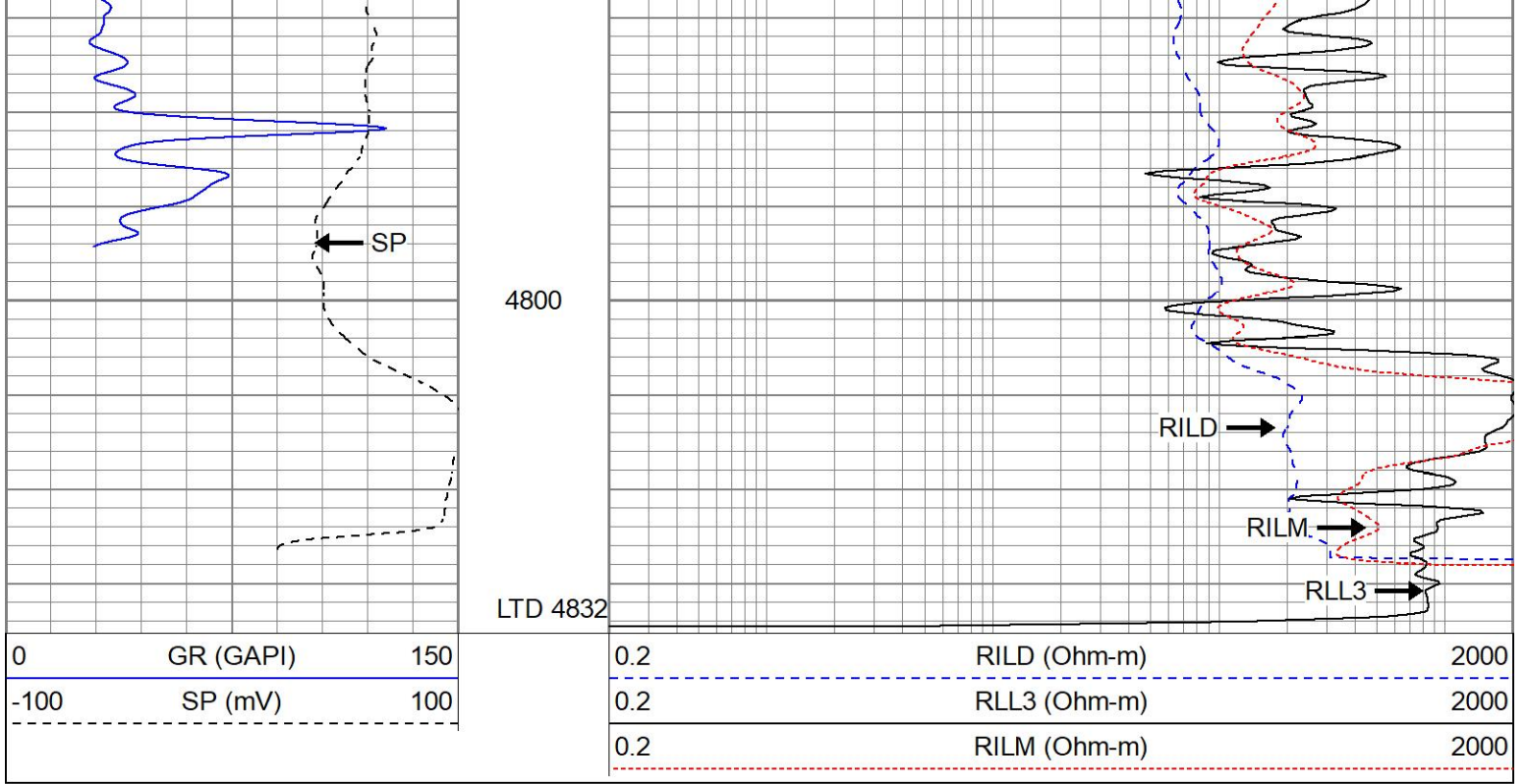
4600

4650

4700

4750

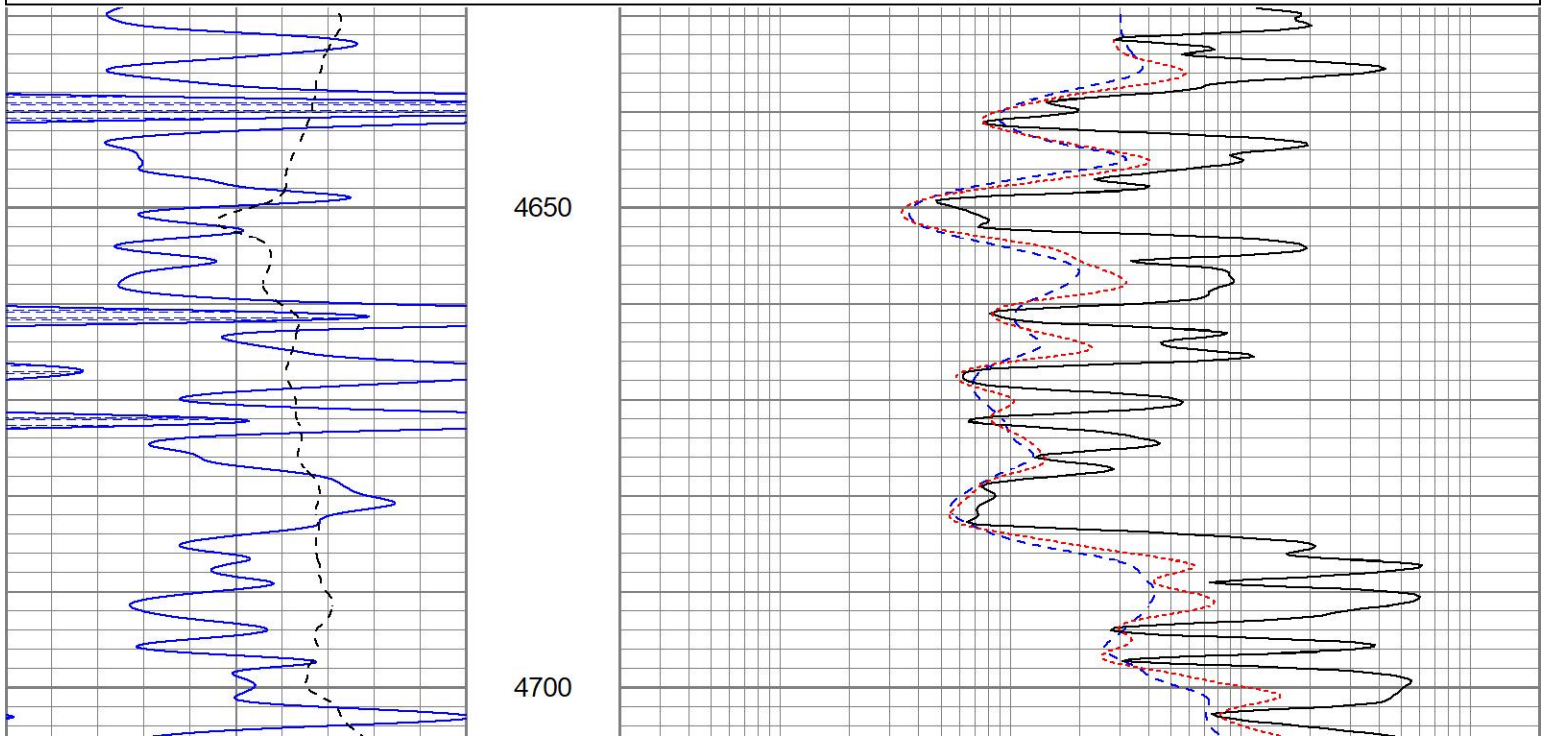


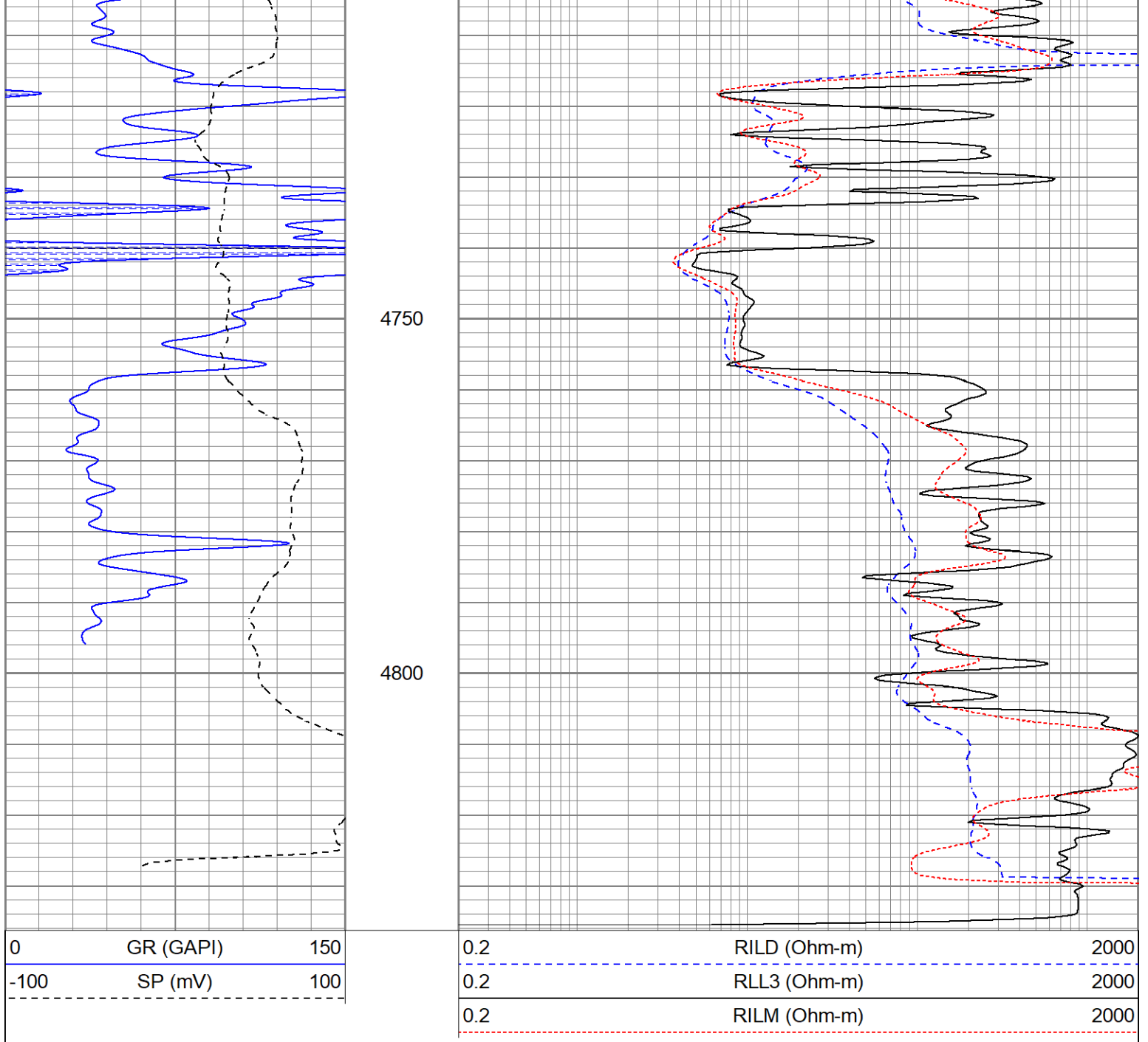


REPEAT SECTION

Database File berexcolygeros#1oh.db
 Dataset Pathname pass2RP.1
 Presentation Format kdil
 Dataset Creation Wed May 22 15:06:59 2024
 Charted by Depth in Feet scaled 1:240

0	GR (GAPI)	150	0.2	RILD (Ohm-m)	2000
-100	SP (mV)	100	0.2	RLL3 (Ohm-m)	2000
			0.2	RILM (Ohm-m)	2000





Calibration Report

Database File berexcolygeros#1oh.db
 Dataset Pathname pass2RP.1
 Dataset Creation Wed May 22 15:06:59 2024

Dual Induction Calibration Report

Serial-Model: 1842-ADM
 Surface Cal Performed: Mon Sep 20 22:00:42 2021
 Downhole Cal Performed: Thu Sep 14 13:06:48 2023
 After Survey Verification Performed: Thu Sep 14 13:02:29 2023

Surface Calibration

Loop:	Readings			References			Results	
	Air	Loop		Air	Loop		m	b
Deep	0.018	0.672	V	0.000	350.000	mmho/m	535.475	-9.896
Medium	0.003	0.769	V	0.000	400.000	mmho/m	522.607	-1.745

Internal:	Zero	Cal		Zero	Cal		m	b
Deep	0.018	0.672	V	0.000	350.000	mmho/m	535.240	-9.549
Medium	0.003	0.768	V	0.000	550.000	mmho/m	718.637	-2.088

Downhole Calibration

Readings			References			Results		
Internal:	Zero	Cal		Zero	Cal		m	b
Deep	-0.210	349.810	mmho/m	-0.343	349.810	mmho/m	1.000	-0.133
Medium	6.952	396.760	mmho/m	-0.226	399.745	mmho/m	1.026	-7.360
Shallow	2.495	0.026	V	500.000	2.000	Ohm-m	201.711	-3.319

After Survey Verification

Readings			Targets			Results		
Internal:	Zero	Cal		Zero	Cal		m'	b'
Deep	0.000	0.000	mmho/m	32.030	5.643	mmho/m	1.000	-0.133
Medium	0.000	0.000	mmho/m	6.952	396.760	mmho/m	1.026	-7.360
Shallow	0.000	0.000	Ohm-m	500.000	2.000	Ohm-m	1.000	0.000

Admyr Lithodensity Calibration Report

Serial-Model: 1C-C
Source: Blue2
Master Calibration Performed: Tue Aug 30 10:20:37 2022

Master Calibration

	Density		Far Detector	Near Detector	
Magnesium	1.670	g/cc	6362.49	3546.71	cps
Aluminium	2.640	g/cc	1733.54	2362.69	cps
Aluminium+Sleeve	2.617	g/cc	1657.01	2197.69	cps
Spine Angle = 72.65			Density/Spine Ratio = 0.712		
	PE		NLITH	NHARD	
Magnesium	2.000	barn	2520.00	1620.00	cps
Aluminium	3.000	barn	1926.00	1699.00	cps
Aluminium+Sleeve	5.000	barn	915.00	1230.00	cps
M = 0.370			B = -0.079	R = 0.999	
	Size		Reading		
Small Ring	8.00	in	8.61	V	
Large Ring	14.30	in	12.40	V	

Neutron Calibration Report

Serial Number: AD5139
Tool Model: ADMY5139
Performed: (Not Performed)

Calibrator Value: 1 NAPI
Calibrator Reading: 1 cps
Sensitivity: 1 NAPI/cps

Temperature Calibration Report

Serial Number: WithMC
Tool Model: WMC
Performed: Fri Apr 19 12:15:04 2019

	Reference	Reading
Low Reference:	0.00 degF	0.00 degF
High Reference:	1.00 degF	1.00 degF
Gain:	1.00	
Offset:	0.00	
Delta Spacing	1	

Inclinometer Calibration Report

Performed:	Wed May 5 19:20:48 2021				
	Low Read.	High Read.	Low Ref.	High Ref.	
X Accelerometer	205.00	1843.00	-1.00	1.00	gee
Y Accelerometer	205.00	1843.00	-1.00	1.00	gee
Z Accelerometer					gee

Gamma Ray Calibration Report

Serial Number:	WithMC	
Tool Model:	WMC	
Performed:	Sat Apr 6 22:30:37 2024	
Calibrator Value:	1.0	GAPI
Background Reading:	0.0	cps
Calibrator Reading:	1.0	cps
Sensitivity:	1.0000	GAPI/cps