

LITHOLOGY STRIP LOG

WellSight Systems

Scale 1:240 (5"=100') Imperial
Measured Depth Log

Well Name: Phelps 9-14

Well Id:

Location: 2258 FSL & 880 FEL Sec 14-T14S - R34W

License Number: 15-023-21614-0000

Spud Date: 4/16/2024

Region: Logan County, KS

Drilling Completed: 4/24/2024

Surface Coordinates:

Bottom Hole

Coordinates:

Ground Elevation (ft): 3003

K.B. Elevation (ft): 3014

Logged Interval (ft): 3550 To: 4680

Total Depth (ft): 4680

Formation: Mississippian

Type of Drilling Fluid: Chemical mud

Printed by WellSight LogViewer from WellSight Systems 1-800-447-1534 www.WellSight.com

OPERATOR

Company: Pioneer Oil Company, Inc

Address: 400 Main Street
Vincennes, Indiana 47501

GEOLOGIST

Name: Rod Andersen

Company: Rod Andersen Consulting


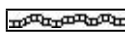
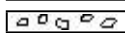
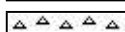
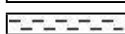
Address: 100 S. Main Suite 510
Wichita, Kansas 67202


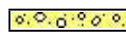



Cores



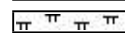

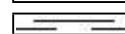
DSTs

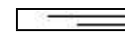


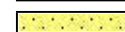

Comments

ROCK TYPES

 Anhy
 Bent
 Brec
 Cht
 Clyst

 Coal
 Congl
 Dol
 Gyp
 Igne

 Lmst
 Meta
 Mrlst
 Salt
 Shale

 Shcol
 Shgy
 Sltst
 Ss
 Till

ACCESSORIES

MINERAL

- Anhy
- Arggrn
- Arg
- Bent
- Bit
- Breclfrag
- Calc
- Carb
- Chtdk
- Chtlt
- Dol
- Feldspar
- Ferrpel
- Ferr
- Glau
- Gyp
- Hvymin
- Kaol
- Marl

- Minxl
- Nodule
- Phos
- Pyr
- Salt
- Sandy
- Silt
- Sil
- Sulphur
- Tuff

FOSSIL

- Algae
- Amph
- Belm
- Bioclst
- Brach
- Bryozoa
- Cephal
- Coral

- Crin
- Echin
- Fish
- Foram
- Fossil
- Gastro
- Oolite
- Ostra
- Pelec
- Pellet
- Pisolite
- Plant
- Strom

STRINGER

- Anhy
- Arg
- Bent
- Coal
- Dol

- Gyp
- Ls
- Mrst
- Sltstrg
- Ssstrg

TEXTURE

- Boundst
- Chalky
- Cryxln
- Earthy
- Finexln
- Grainst
- Lithogr
- Microxln
- Mudst
- Packst
- Wackest

OTHER SYMBOLS

POROSITY

- Earthy
- Fenest
- Fracture
- Inter
- Moldic
- Organic
- Pinpoint
- Vuggy

SORTING

- Well
- Moderate
- Poor

ROUNDING

- Rounded
- Subrnd
- Subang

- Angular

OIL SHOW

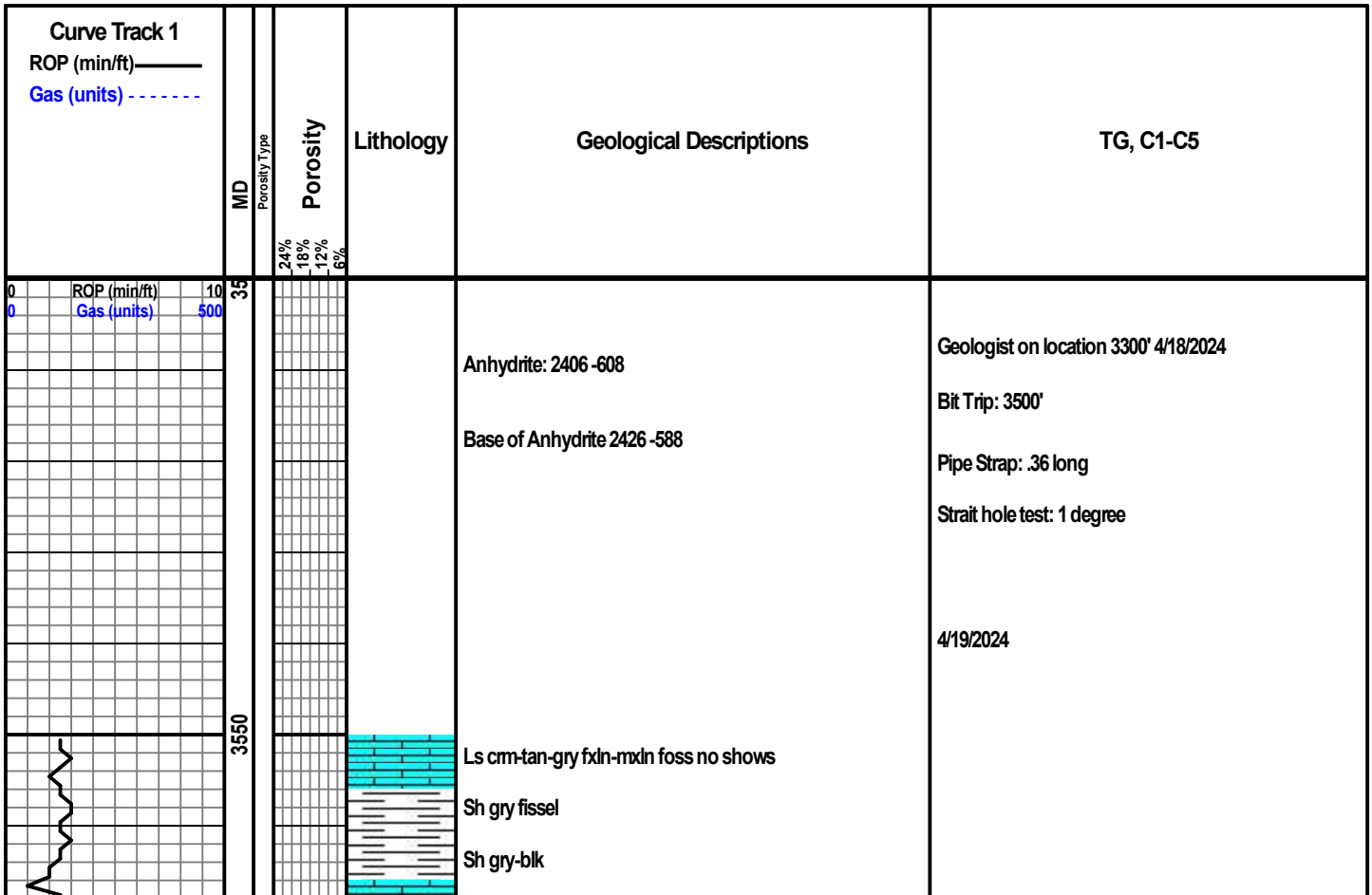
- Even
- Spotted
- Ques
- Dead

INTERVAL

- Core
- Dst

EVENT

- Rft
- Sidewall



HOWARD 3578 -564

Ls tan-bm fxln-cxln foss no shows
Ls cm-tan fxln-cxln foss trace dead oil stain no free oil no flor

Ls cm-tan fxln-cxln-pinpoint por foss no show vis por

Ls cm-tan fxln-mxln motteled vfoss no shows

TOPEKA 3610 -596

Sh red-gry soft

Ls cm fxln-cxln vfoss well cemented no show

Ls cm-tan fxln-cxln v foss in part no shows

Ls tan fxln foss no show

Sh gry-bm silty micaceous

Ls cm-tan fxln-cxln foss no shows

Ls cm-tan fxln-cxln some pinpoint por vfoss no shows

Sh gry

Ls cm-tan fxln-cxln vfoss no show

Ls wt-cm fxln-cxln vfoss no show

Ls wt-cm fxln-mxln vfoss no show

Sh gry-drk gry

Ls cm-tan-bm fxln-cxln v foss no show

Ls cm-tan fxln-mxln foss no show

DEER CREEK 3696 -682

Ls cm-tan fxln v foss no show

Ls cm-tan fxln-cxln-pinpoint por few pieces with heavy blk oil free oil when broken slight flor good streaming cut pyritic in part

Ls cm-tan fxln no vis por no show

Sh gry-drk gry

cfs 3743

Ls cm-tan fxln foss no show

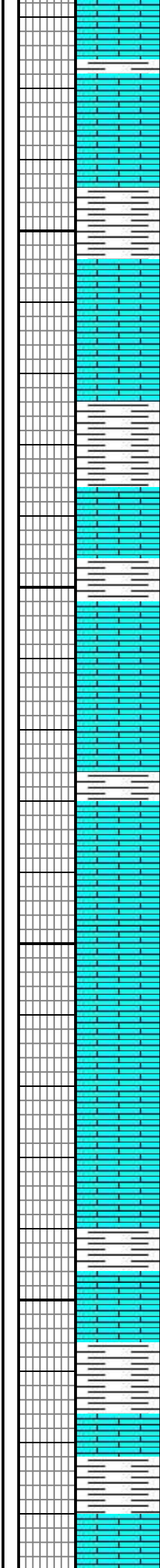
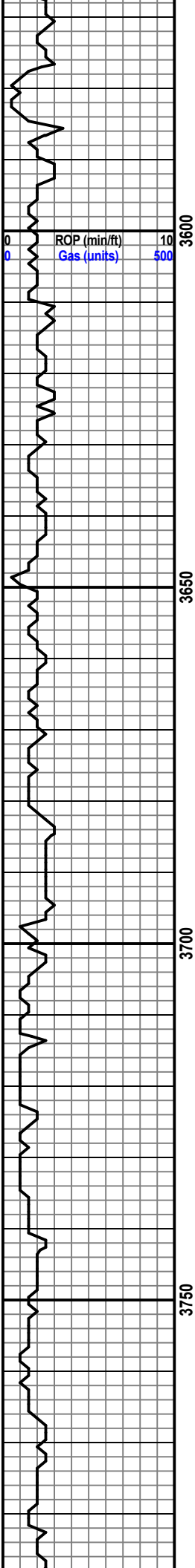
Lt gry-dark gry

Sh red

Ls cm-tan fxln-mxln foss no show

Sh red-gry-blk

Ls cm-tan-gry fxln-cxln v foss no show



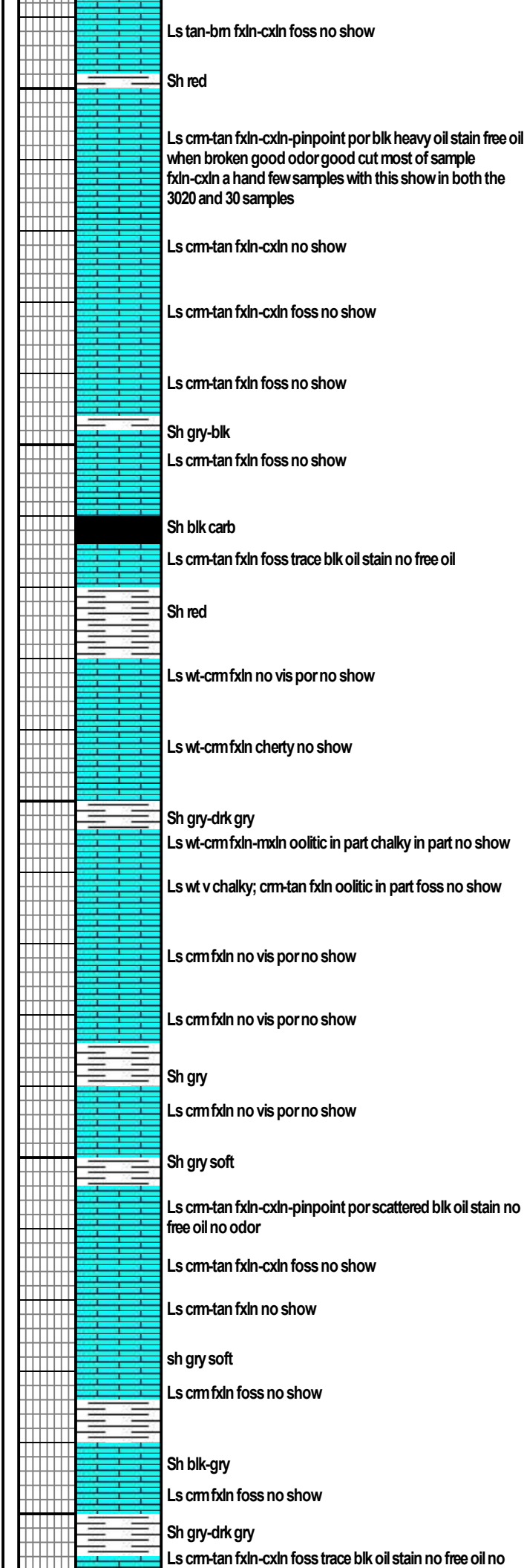
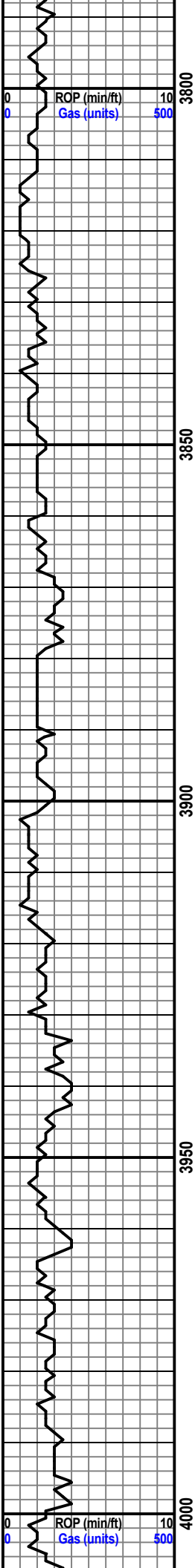
Ls tan-bm fxln-cxln foss no shows
Ls cm-tan fxln-cxln foss trace dead oil stain no free oil no flor
Ls cm-tan fxln-cxln-pinpoint por foss no show vis por
Ls cm-tan fxln-mxln motteled vfoss no shows
Sh red-gry soft
Ls cm fxln-cxln vfoss well cemented no show
Ls cm-tan fxln-cxln v foss in part no shows
Ls tan fxln foss no show
Sh gry-bm silty micaceous
Ls cm-tan fxln-cxln foss no shows
Ls cm-tan fxln-cxln some pinpoint por vfoss no shows
Sh gry
Ls cm-tan fxln-cxln vfoss no show
Ls wt-cm fxln-cxln vfoss no show
Ls wt-cm fxln-mxln vfoss no show
Sh gry-drk gry
Ls cm-tan-bm fxln-cxln v foss no show
Ls cm-tan fxln-mxln foss no show
Ls cm-tan fxln v foss no show
Ls cm-tan fxln-cxln-pinpoint por few pieces with heavy blk oil free oil when broken slight flor good streaming cut pyritic in part
Ls cm-tan fxln no vis por no show
Sh gry-drk gry
Ls cm-tan fxln foss no show
Lt gry-dark gry
Sh red
Ls cm-tan fxln-mxln foss no show
Sh red-gry-blk
Ls cm-tan-gry fxln-cxln v foss no show

HOWARD 3578 -564

TOPEKA 3610 -596

DEER CREEK 3696 -682

cfs 3743



OREAD 3808 -794

cfs 3845

HEEBNER 4860 -1846

TORONTO 3879 -865

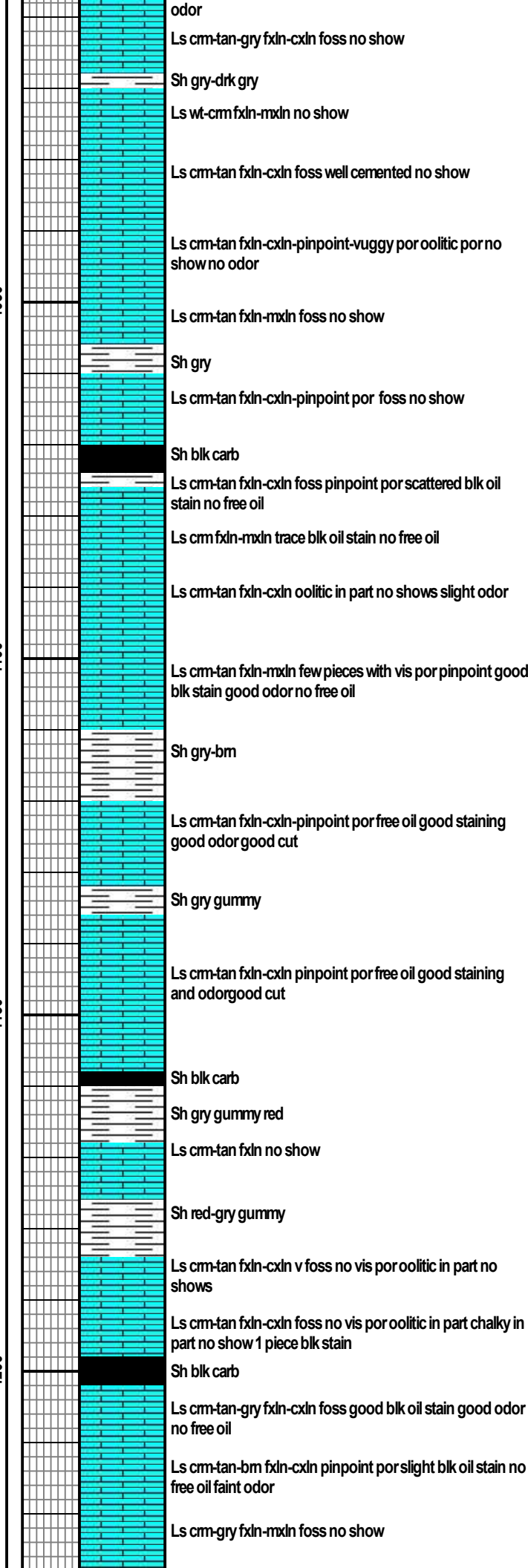
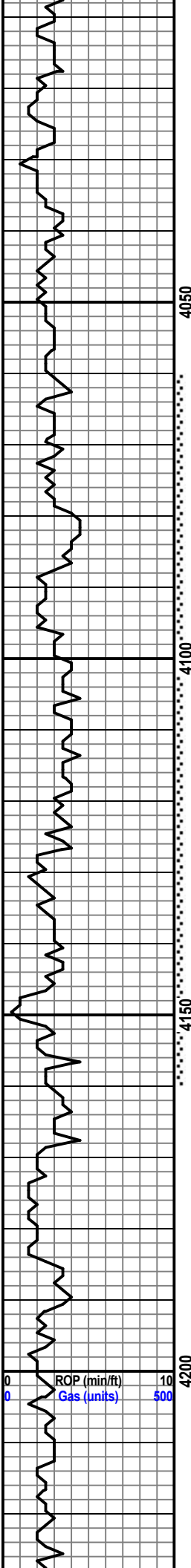
LANSING 3903 -889

cfs 3920

LANSING B 3939 -925

cfs 3970

LANSING C 3988 -974



Mud:
Wt: 9.4
Vis: 56

MUNCIE CREEK 4072 -1058

LANSING D 4087 -1073

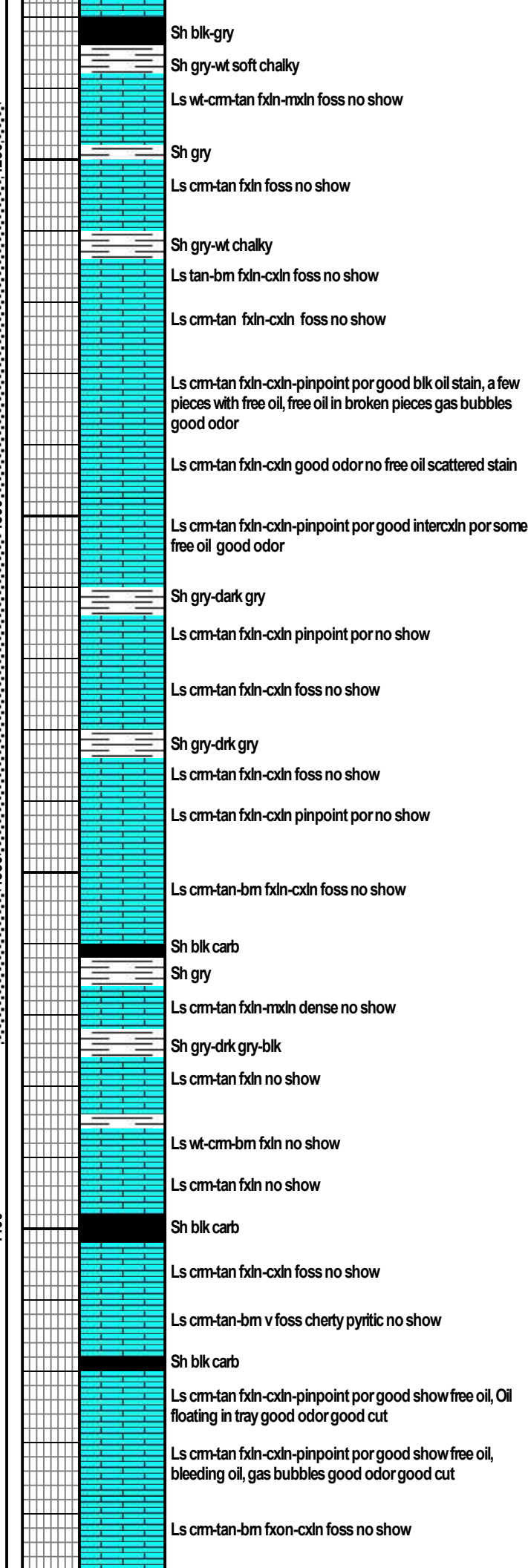
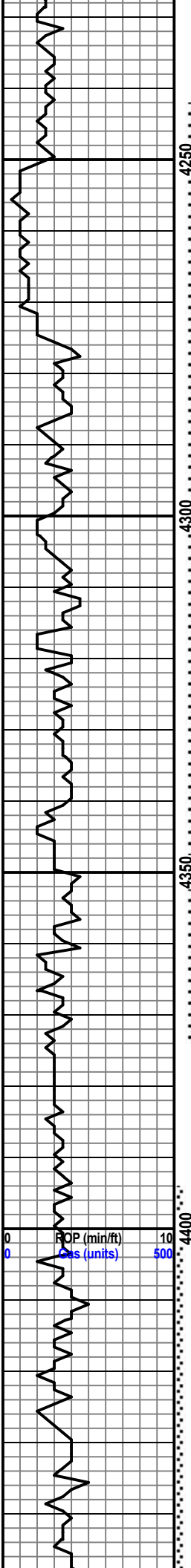
LANSING E 4108 -1094

DST #: 4062-4160
Rec: 240' mud with oil spots
FP: 41-109# 116-181#
SIP: 1184-1171

CFS 4160
STARK 4158 -1144
4/21/2024

Mud:
Wt: 9.2
Vis: 66

HUSHPUCKNEY 4198 -1184



BASE OF KANSAS CITY 4228 -1214

MARMATON 4270 -1356

ALTAMONT 4294 -1280

DST #2 4242-4375
 Rec:
 410' total fluid
 10' oil
 160' gmwco
 240' omcw
 FP: 73-166# 171-222#
 SIP: 1290-1254

BANDERA 4367 -1353

PAWNEE 4372 -1358

4/22/2024
 DST #2: 4242-4375

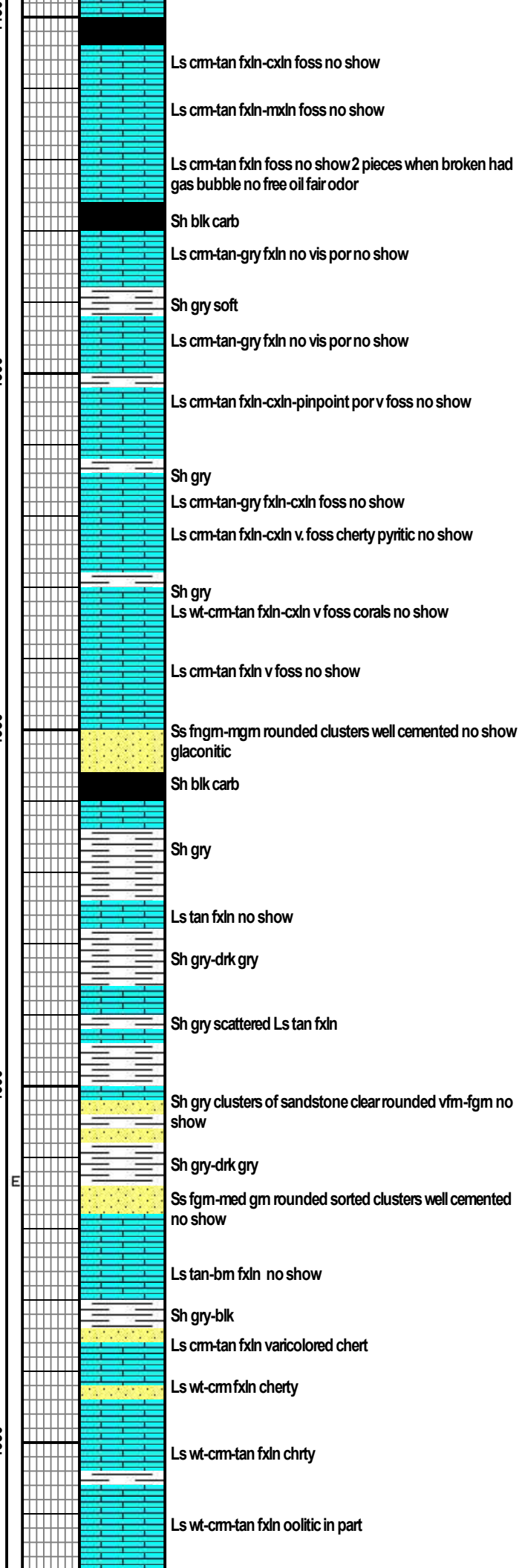
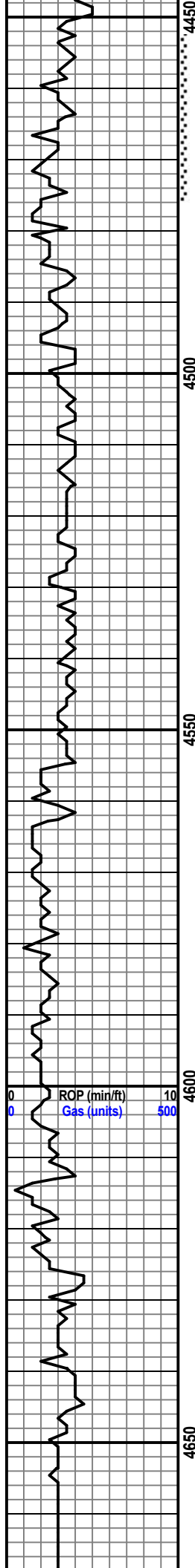
Mud:
 Wt: 9.5
 Vis:56

MYRIC STATION 4402 -1388

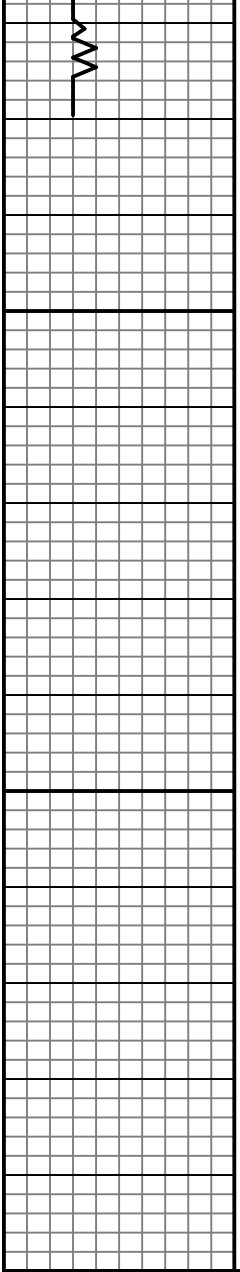
FT SCOTT 4420 -1406

DST #3: 4394-4475
 Rec: 20' mud with oil spots
 FP: 20-23 25-38#
 SIP: 1148-1079#

ROP (min/ft) 10
 Gas (units) 500



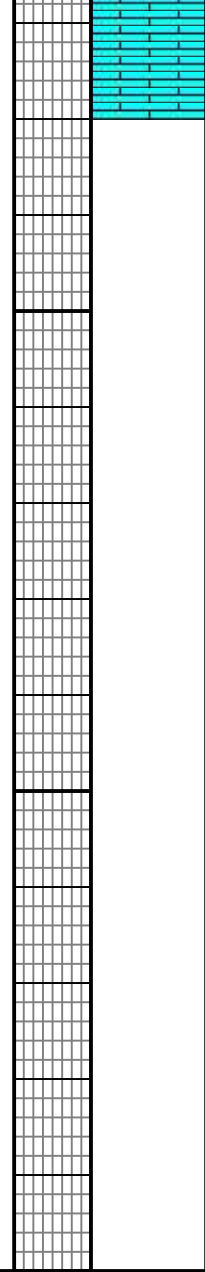
cfs
VERDIGRES 4456 -1442
 4/23/2024
 DST #3 4394-4475
 cfs
 Mud:
 Wt: 9.1
 Vis: 68
JOHNSON 4494 -1480
 cfs
JOHNSON BASAL SANDSTONE 4552-1538
MORROW 4564 -1550
MORROW SANDSTONE 4602 -1588
 cfs
MISSISSIPPIAN 4630 -1616



4700

4750

00



TD DRILLER 4680

TD LOG 4681