

SONIC
LOG



Company PIONEER OIL COMPANY, INC.

Well PHELPS #9-14

Field UNNAMED

County LOGAN State KANSAS

Location: API #: 15-109-21670-0000

2258 FSL & 880 FEL
SE - NW - NE - SE

SEC 14 TWP 14S RGE 34W

Permanent Datum GROUND LEVEL Elevation 3003

Log Measured From KELLY BUSHING 11' A.G.L.

Drilling Measured From KELLY BUSHING

Other Services

CDL/CNL/PE
DIL/MEI

Elevation

K.B. 3014
D.F. 3012
G.L. 3003

Date	4/24/24		
Run Number	TWO		
Depth Driller	4680		
Depth Logger	4681		
Bottom Logged Interval	4673		
Top Log Interval	224		
Casing Driller	8 625 @ 224		
Casing Logger	224		
Bit Size	7.875		
Type Fluid in Hole	CHEMICAL MUD	CHLORIDES 3,000 PPM	
Density / Viscosity	9.1/68		
pH / Fluid Loss	11/8.0		
Source of Sample	FLOWLINE		
Rm @ Meas. Temp	1.10 @ 60F		
Rmf @ Meas. Temp	.825 @ 60F		
Rmc @ Meas. Temp	1.32 @ 60F		
Source of Rmf / Rmc	MEASUREMENT		
Rm @ BHT	.541 @ 122F		
Time Circulation Stopped	4 HOURS		
Time Logger on Bottom	12:00 P.M.		
Maximum Recorded Temperature	122F		
Equipment Number	3802		
Location	HAYS, KANSAS		
Recorded By	COLE ROBBEN		
Witnessed By	ROD ANDERSEN		

<<< Fold Here >>>

All interpretations are opinions based on inferences from electrical or other measurements and we cannot and do not guarantee the accuracy or correctness of any interpretation, and we shall not, except in the case of gross or willful negligence on our part, be liable or responsible for any loss, costs, damages, or expenses incurred or sustained by anyone resulting from any interpretation made by any of our officers, agents or employees. These interpretations are also subject to our general terms and conditions set out in our current Price Schedule.

Comments

THANK YOU FOR USING ELI WIRELINE SERVICES, HAYS, KS. (785) 628-6395

DIRECTIONS:

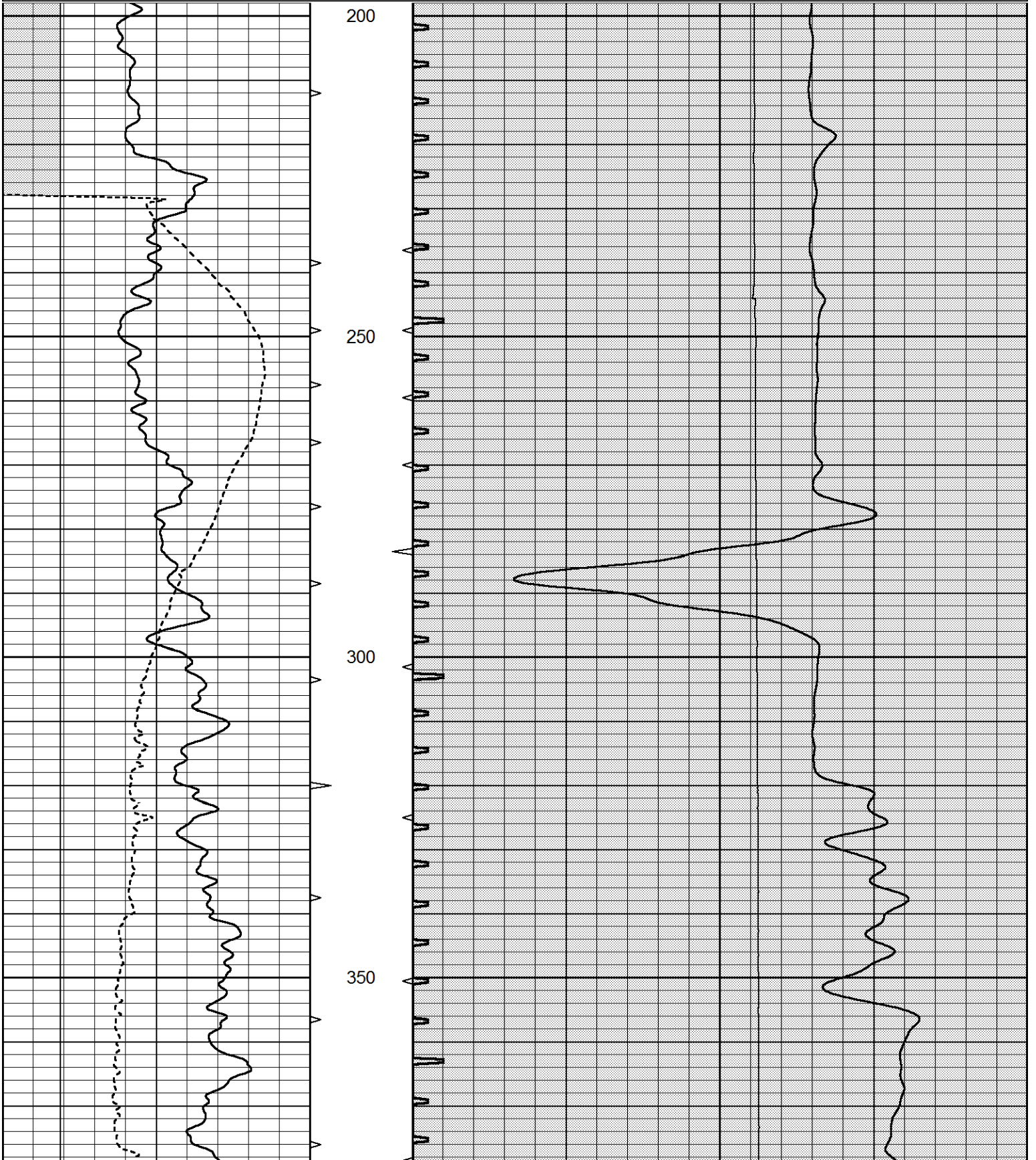
FROM MONUMENT, KANSAS SOUTH 20 MILES ON 350TH TO INDIAN ROAD, 2 MILES WEST,
1 MILE NORTH, WEST INTO

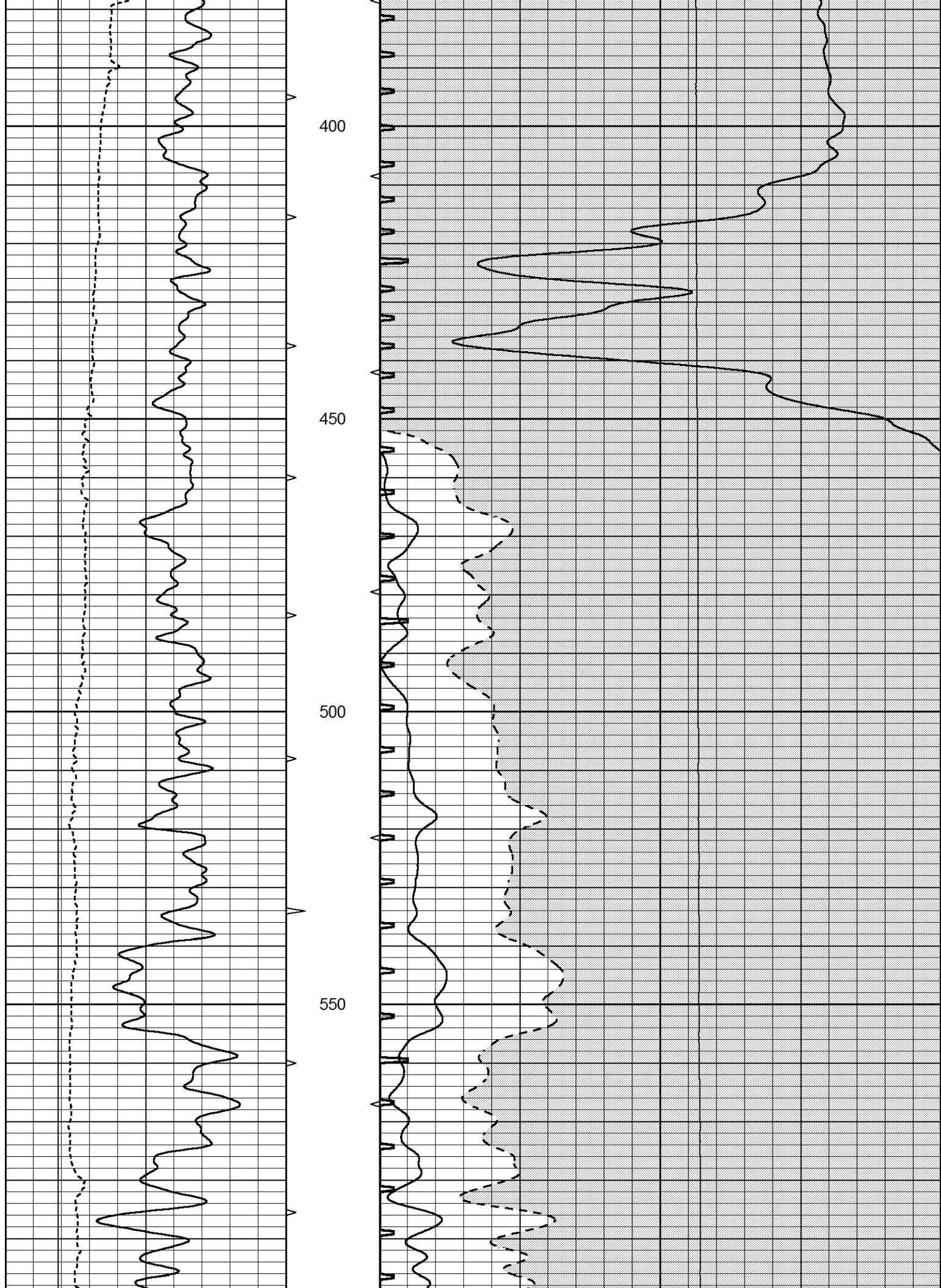


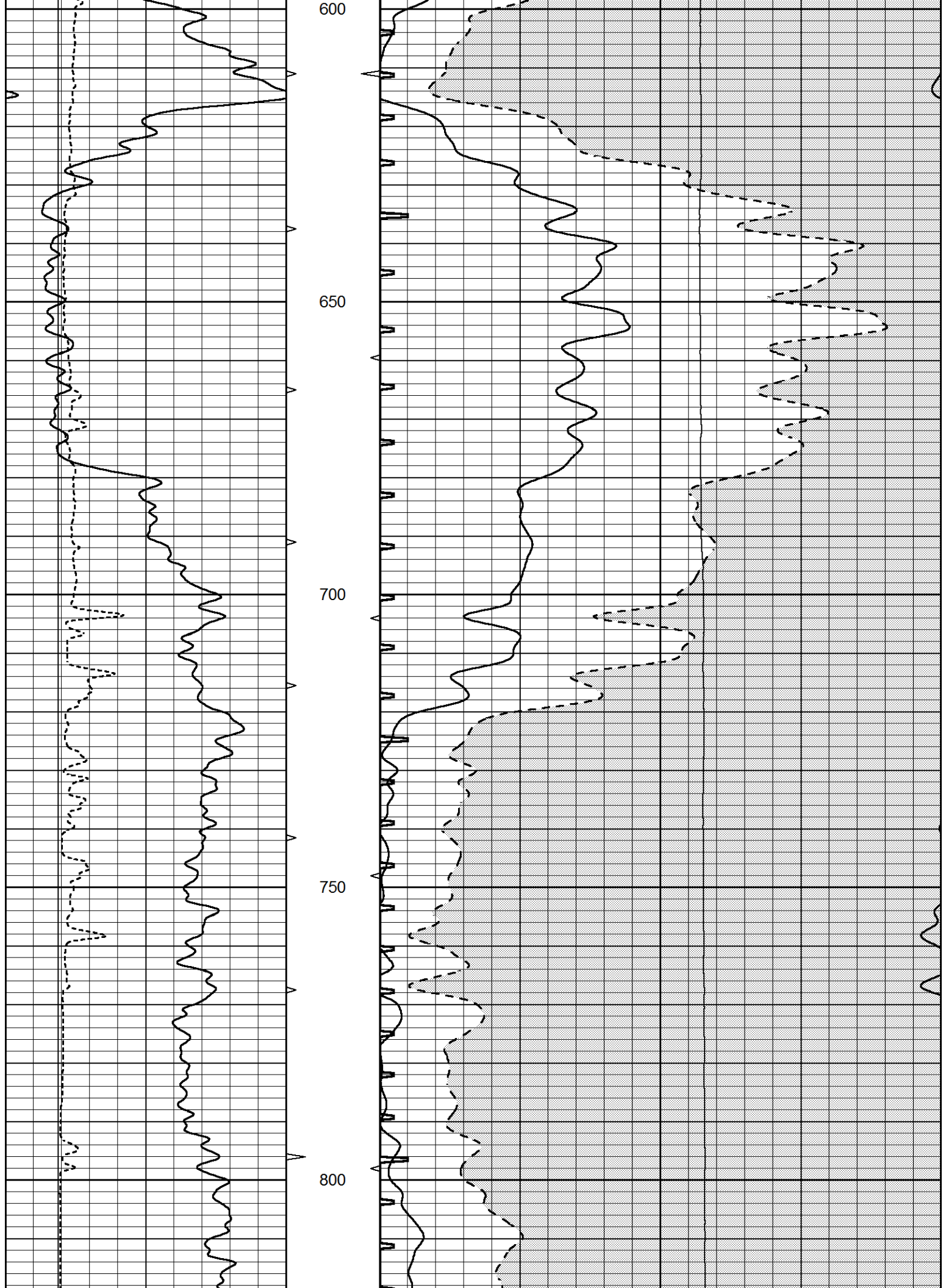
MAIN SECTION

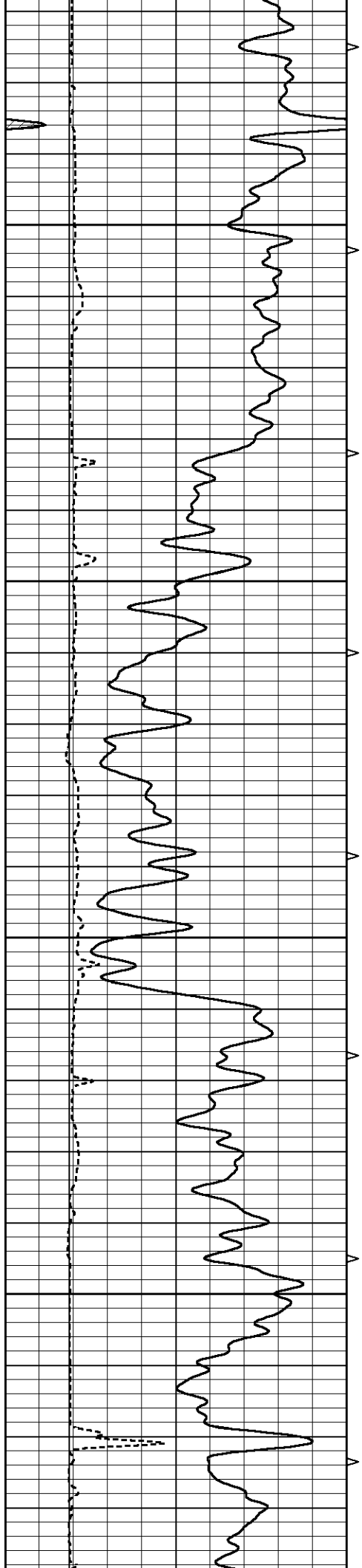
Database File 8672pe.db
 Dataset Pathname pass6.6
 Presentation Format _slt
 Dataset Creation Wed Apr 24 13:32:21 2024
 Charted by Depth in Feet scaled 1:240

0	GAMMA RAY (GAPI)	150	ABHV	140	DELTA TIME (usec/ft)		40
6	CALIPER (in)	16	10 (ft3)	0	SONIC POROSITY (pu)		-10
-----			TBHV	0	ITT (msec)	20	0
			0 (ft3)	10	LTEN (lb)		5000







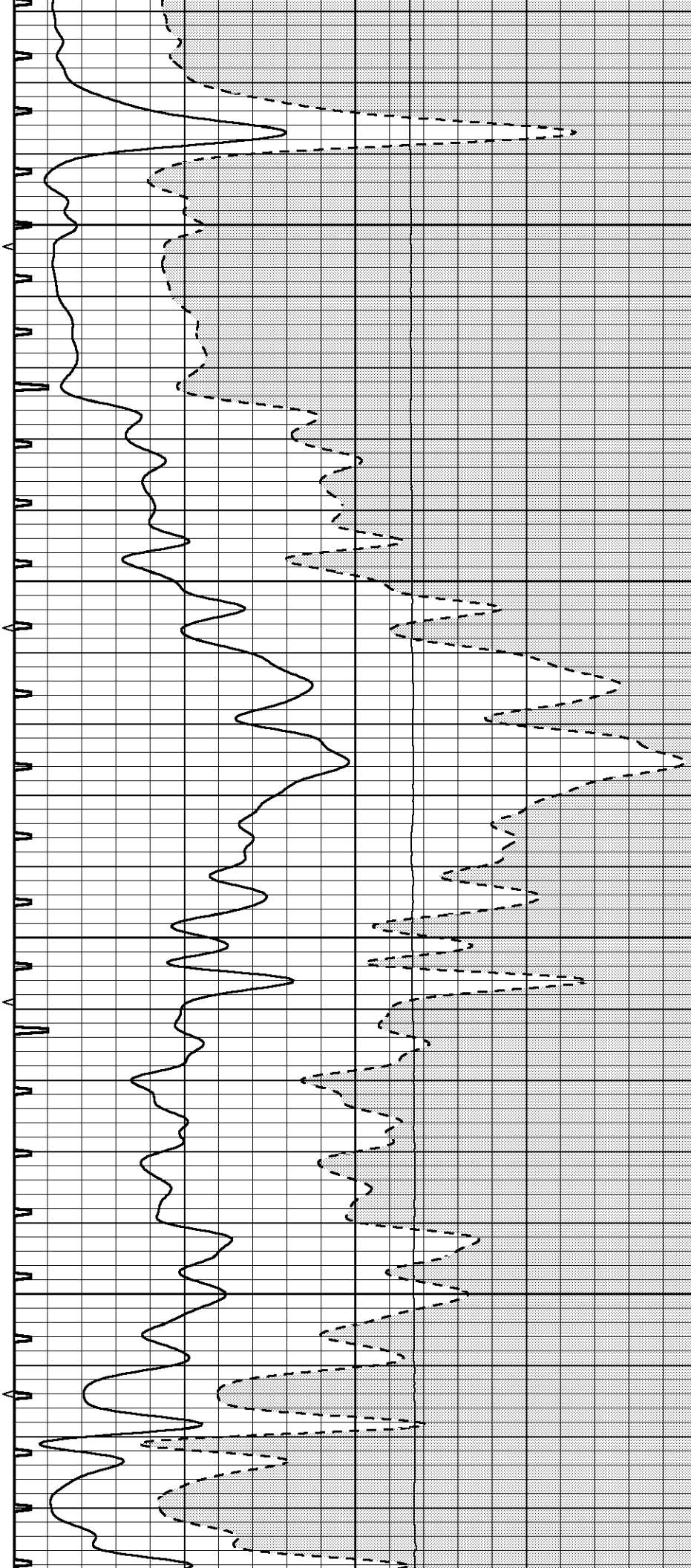


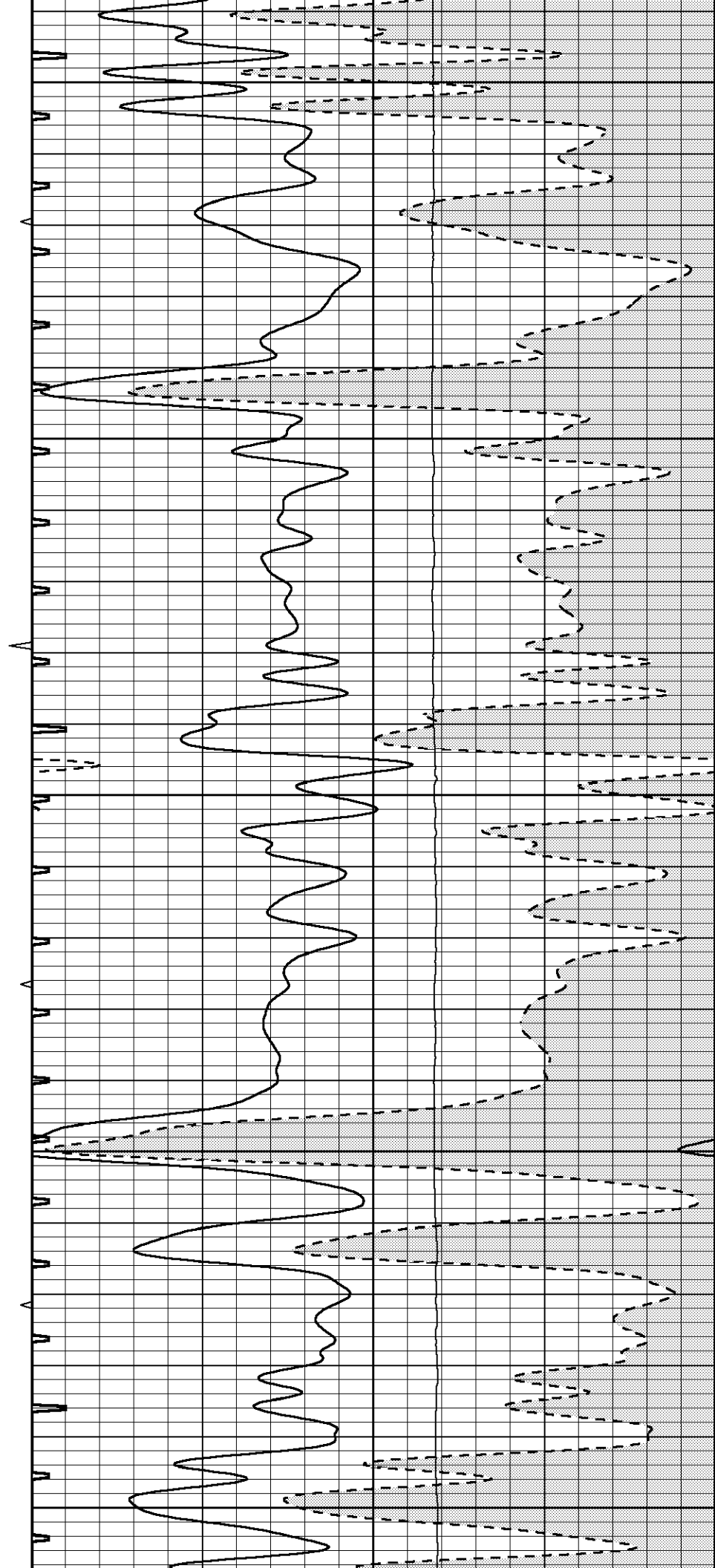
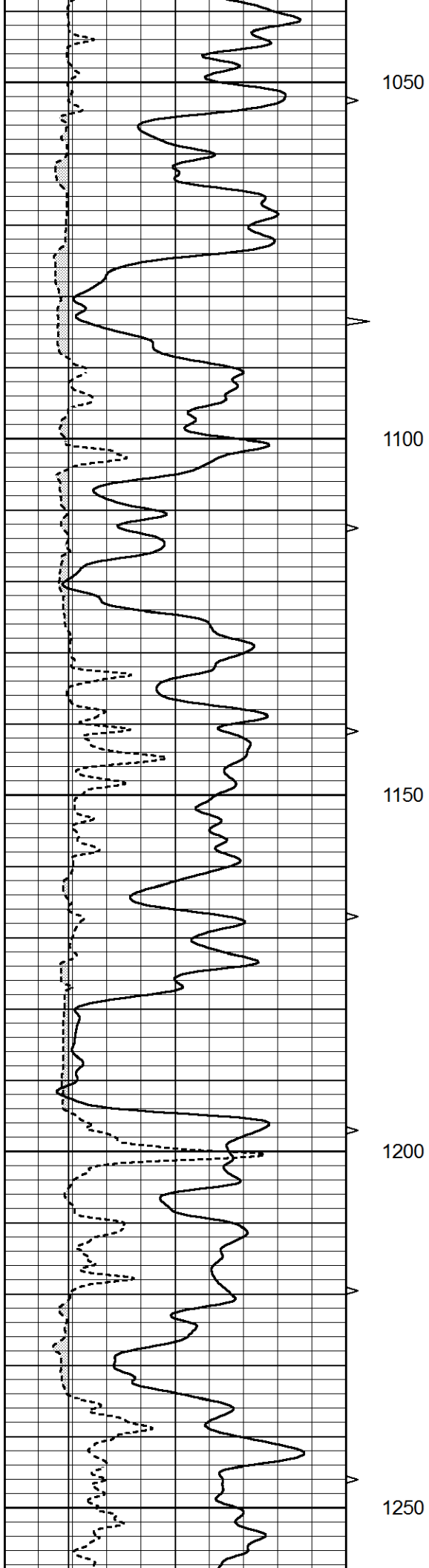
850

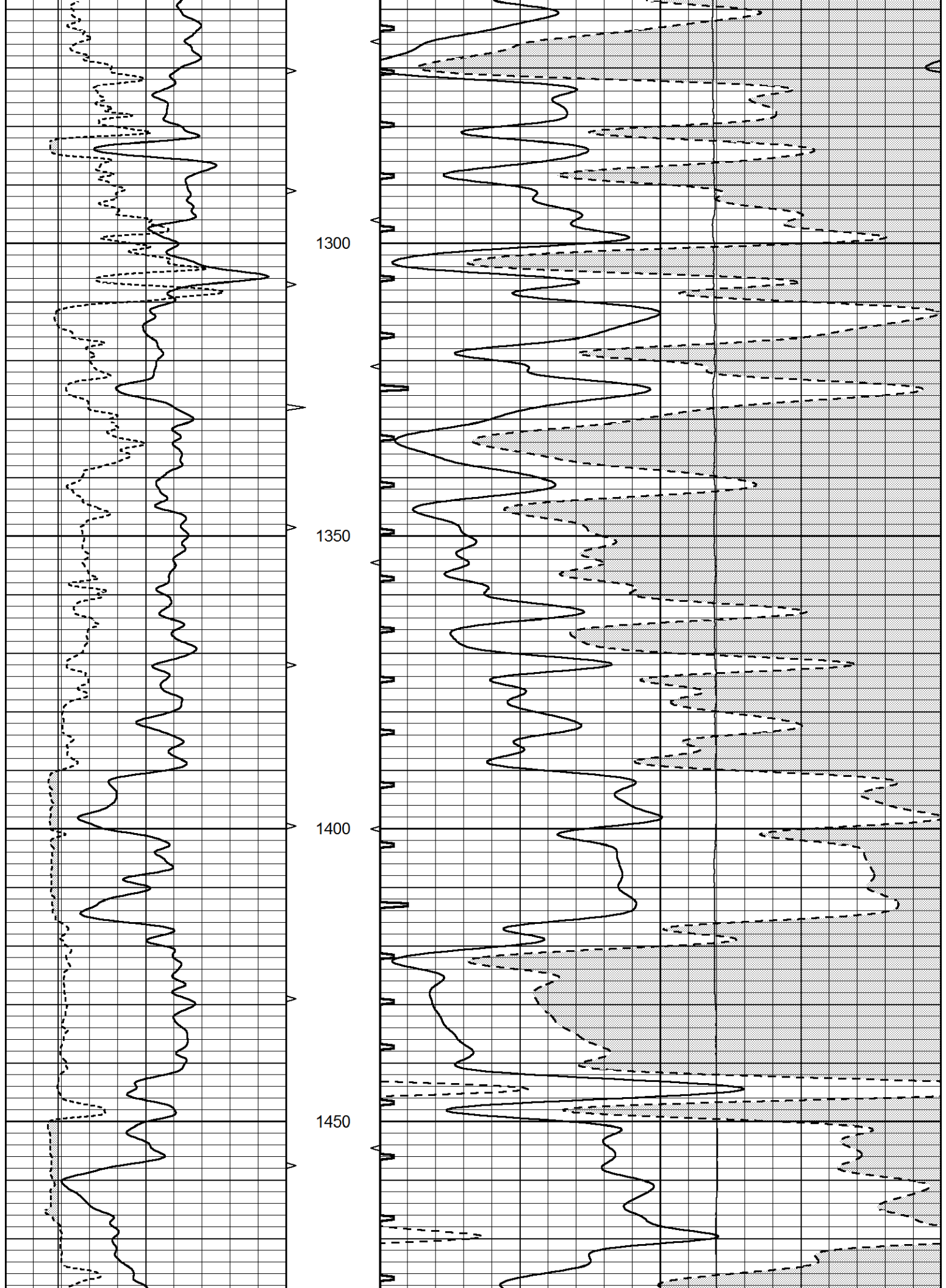
900

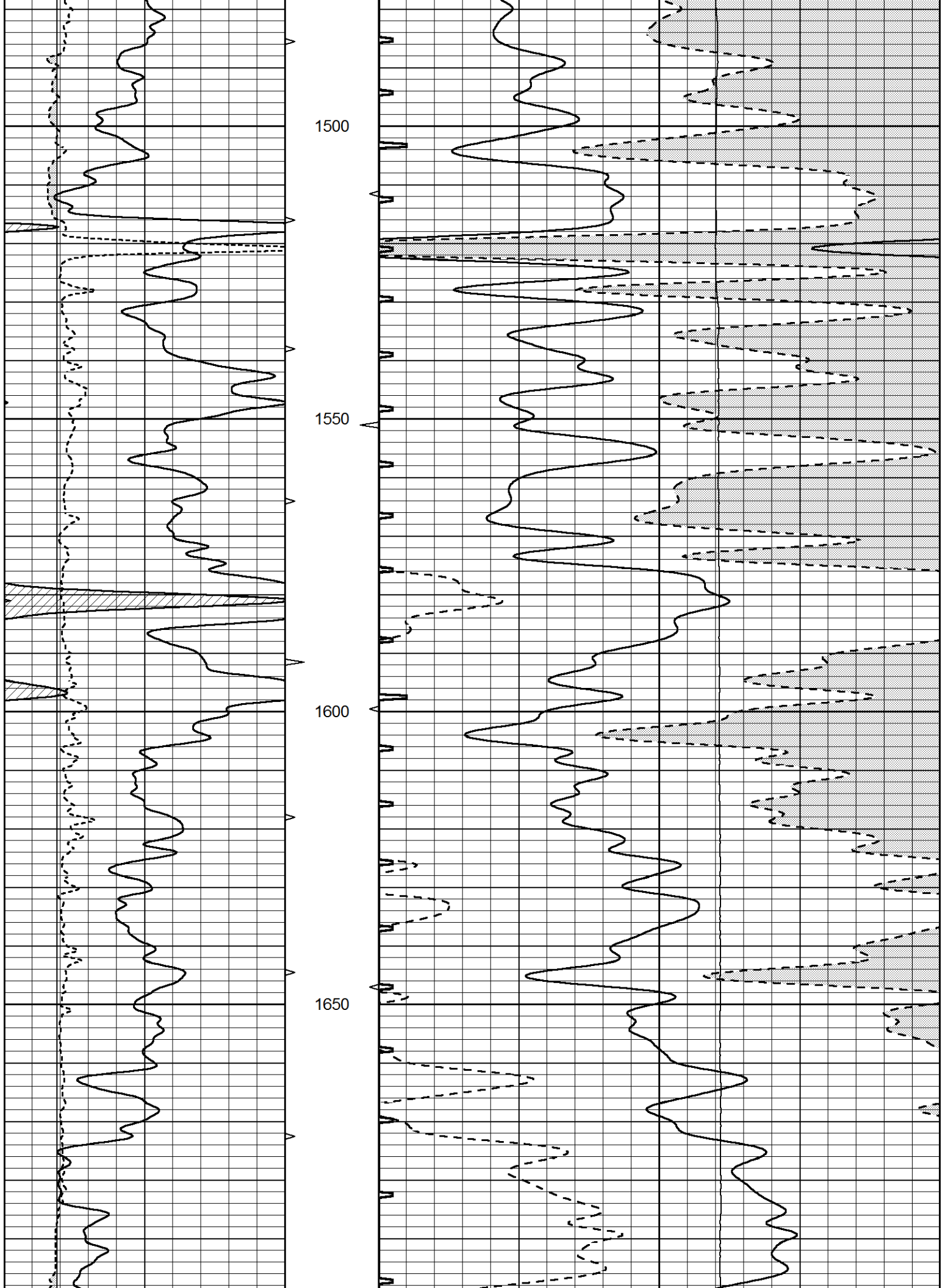
950

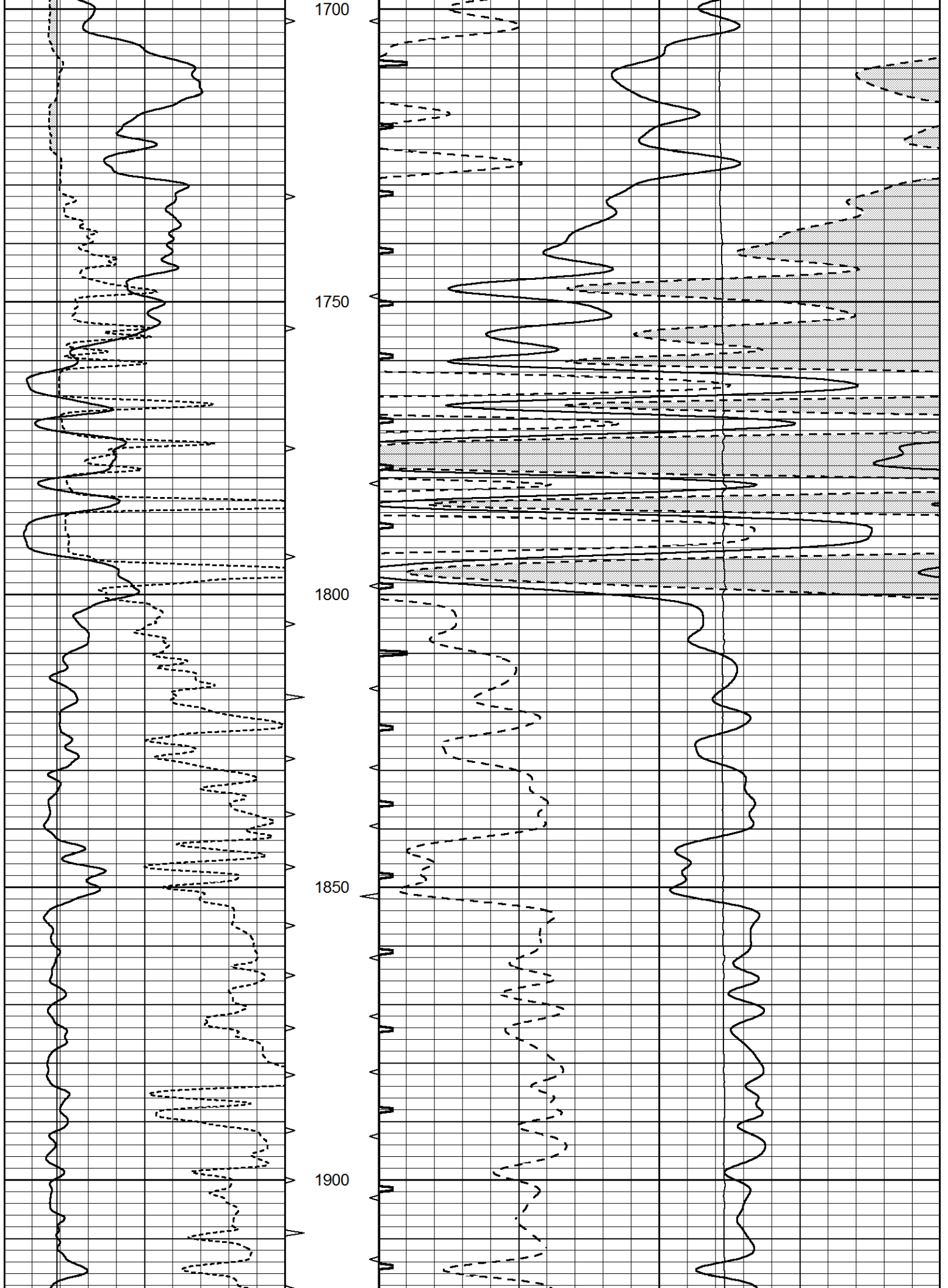
1000

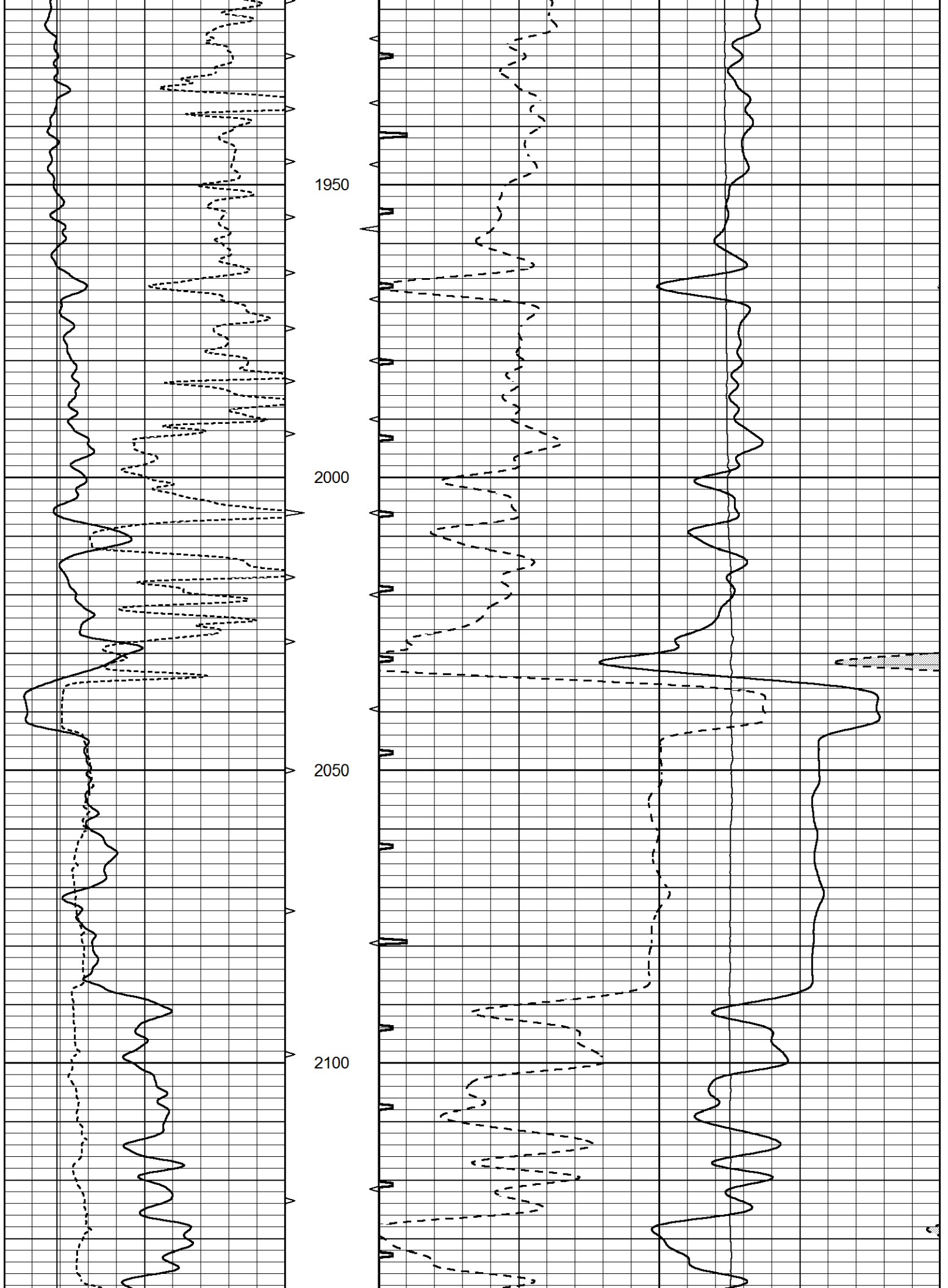


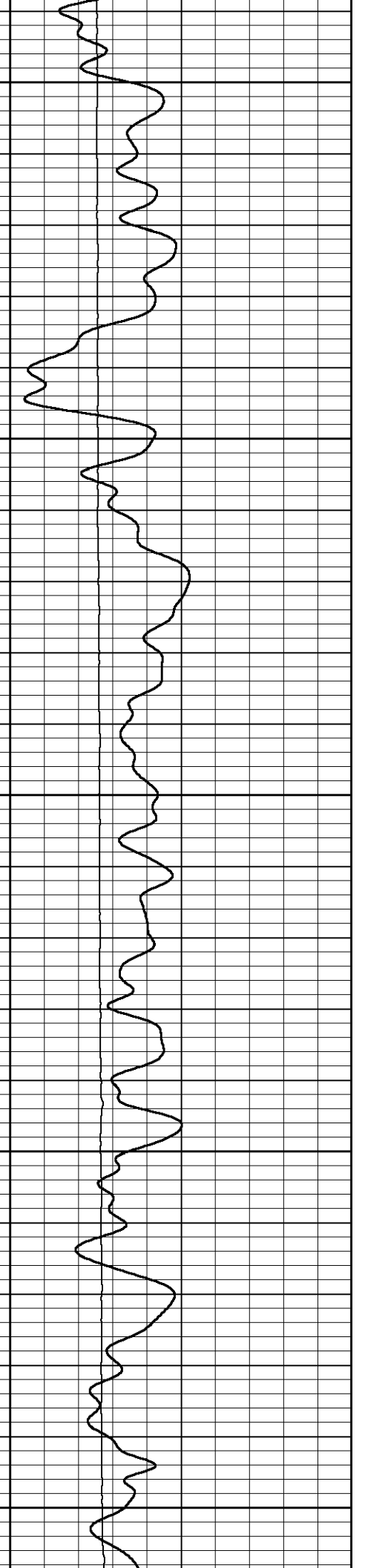
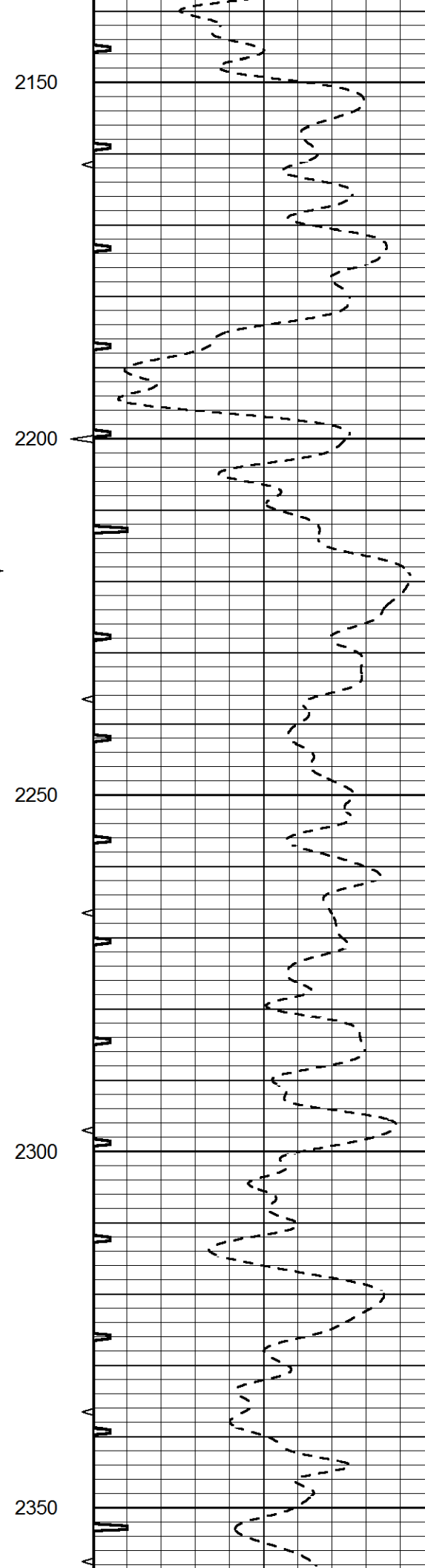
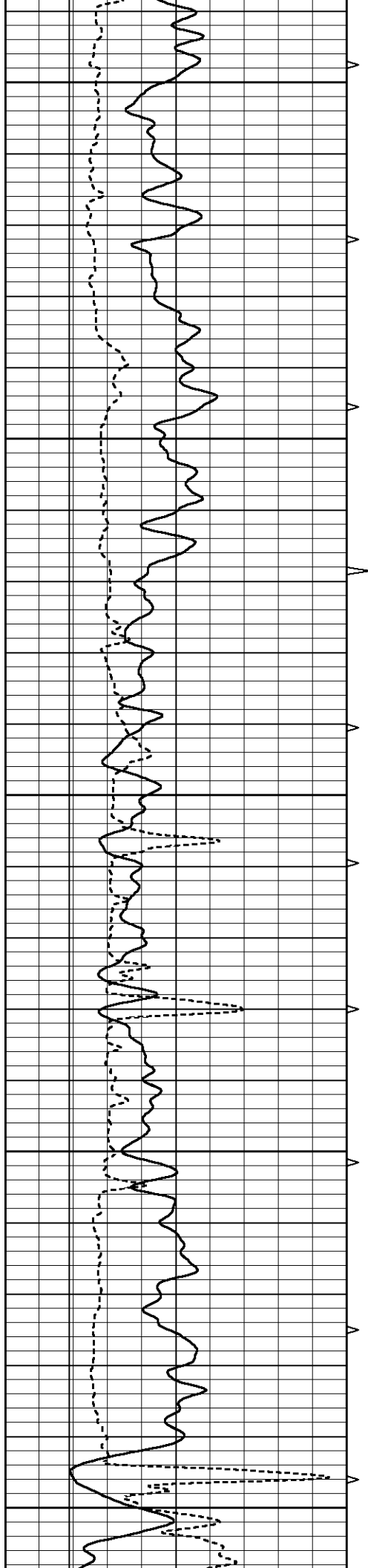


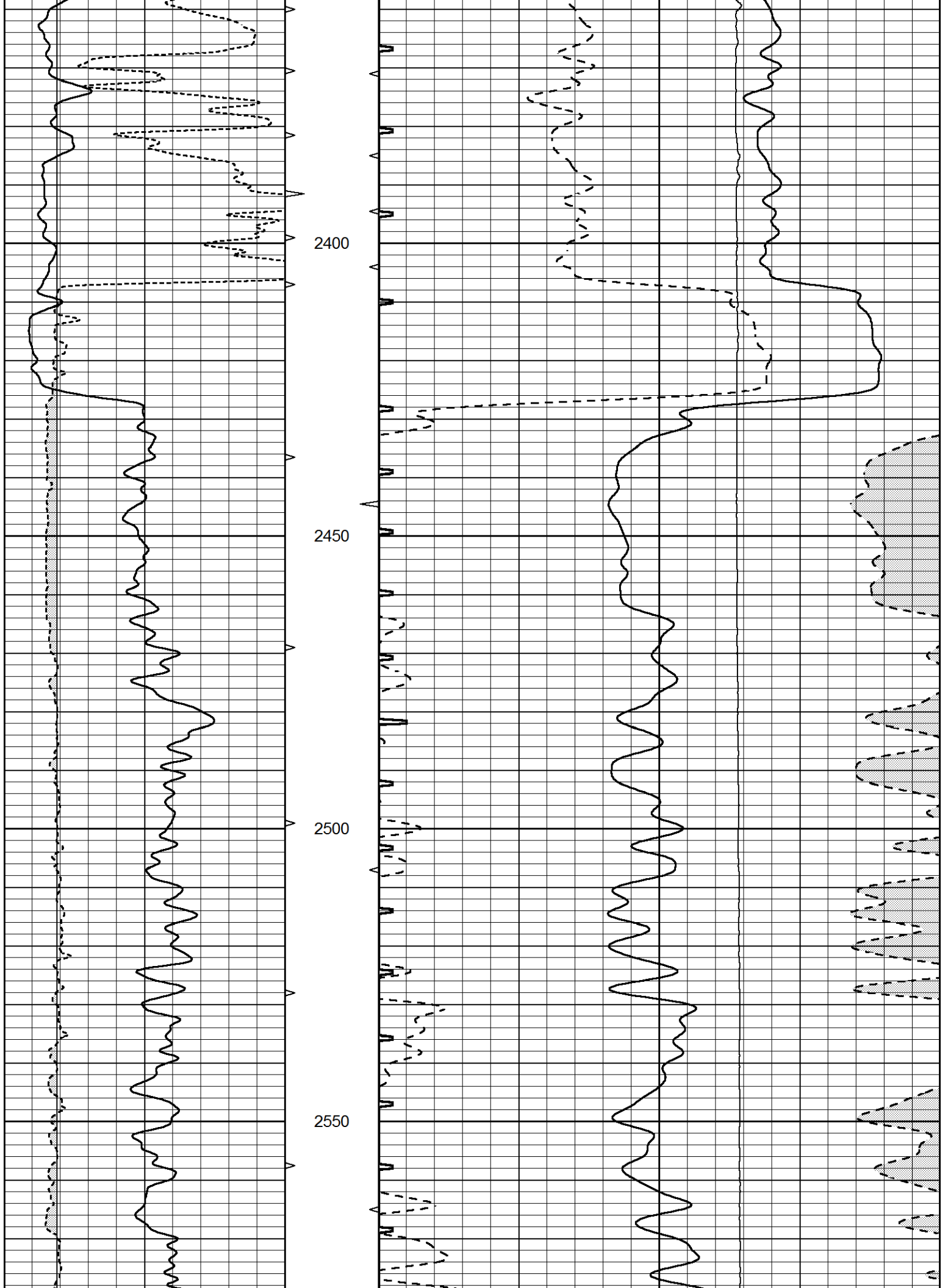


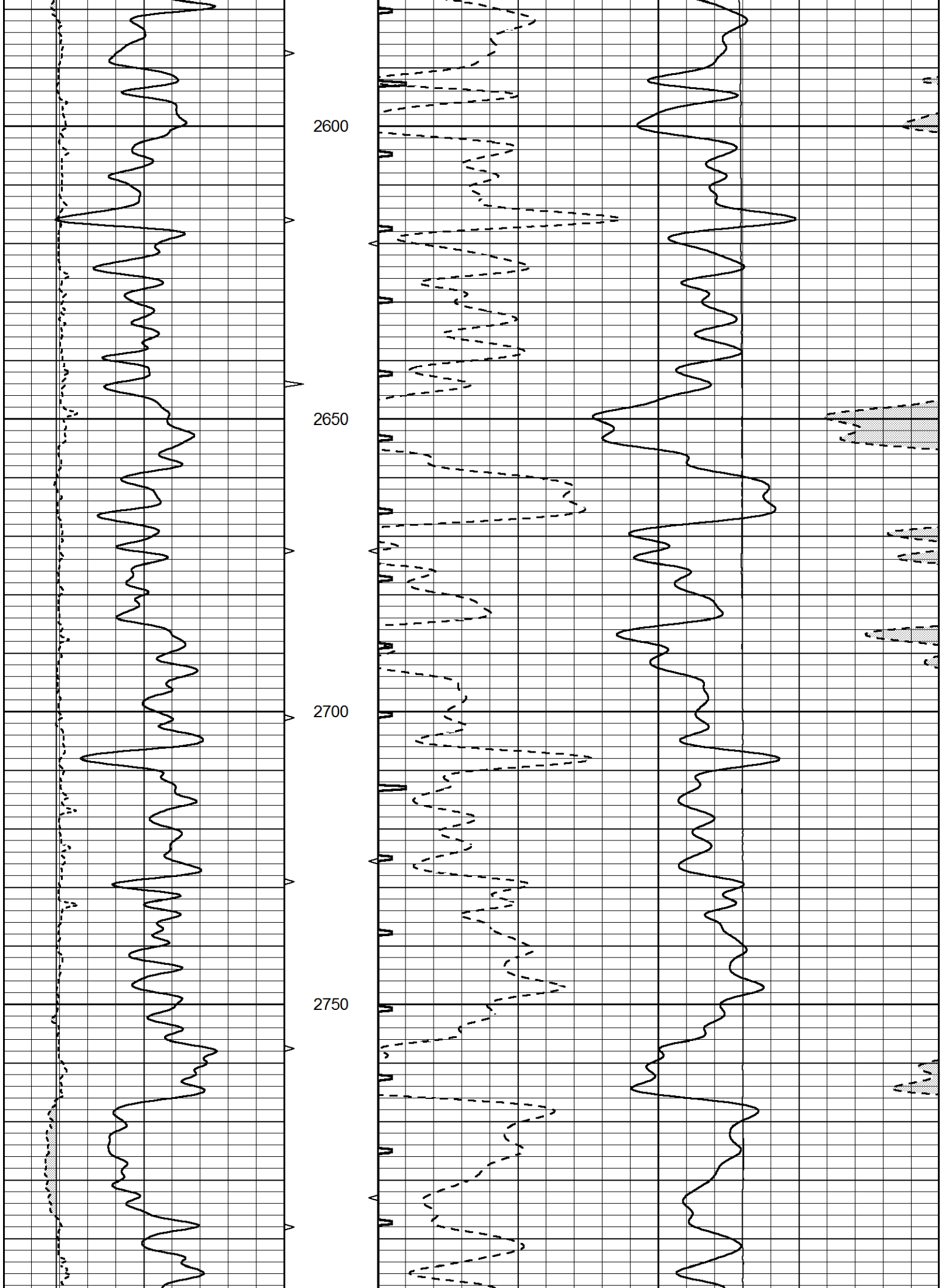


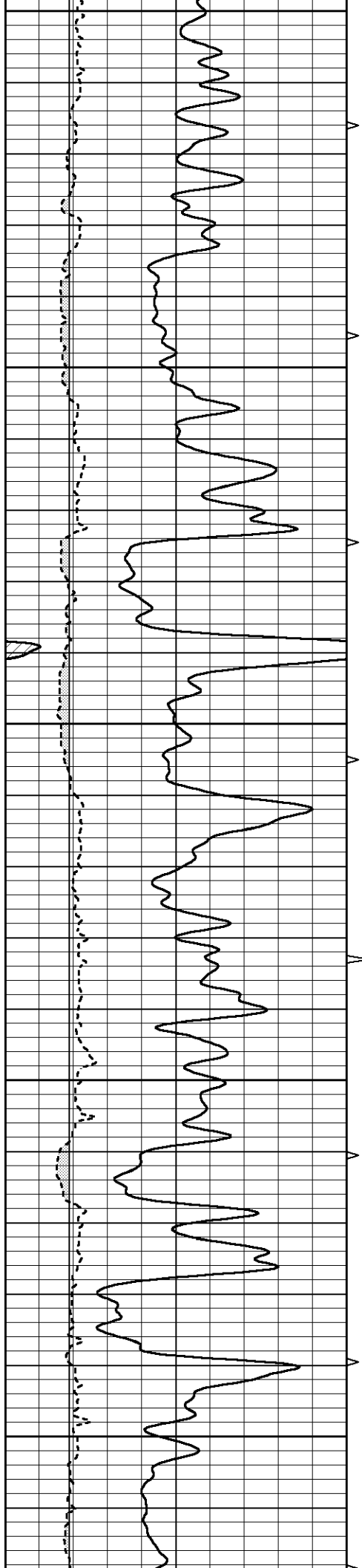




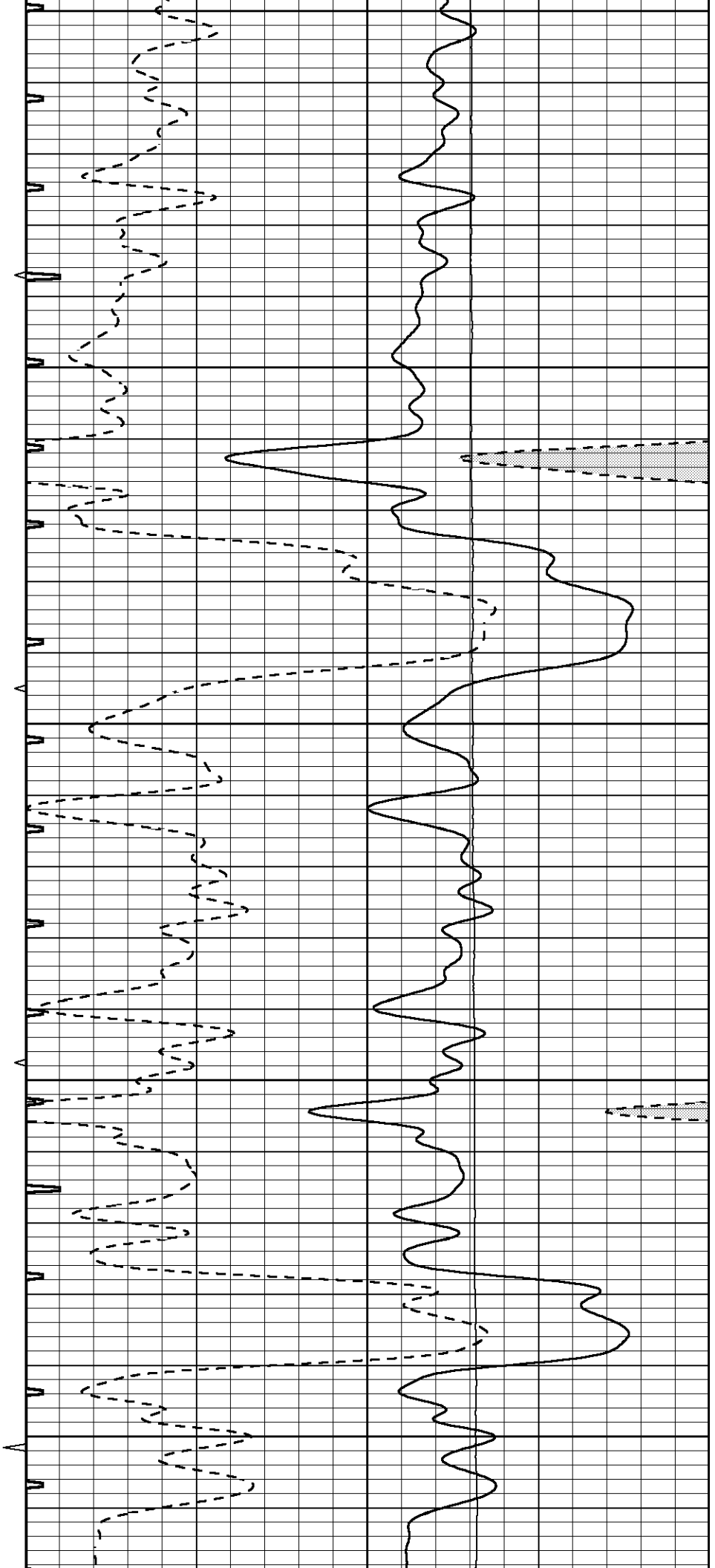


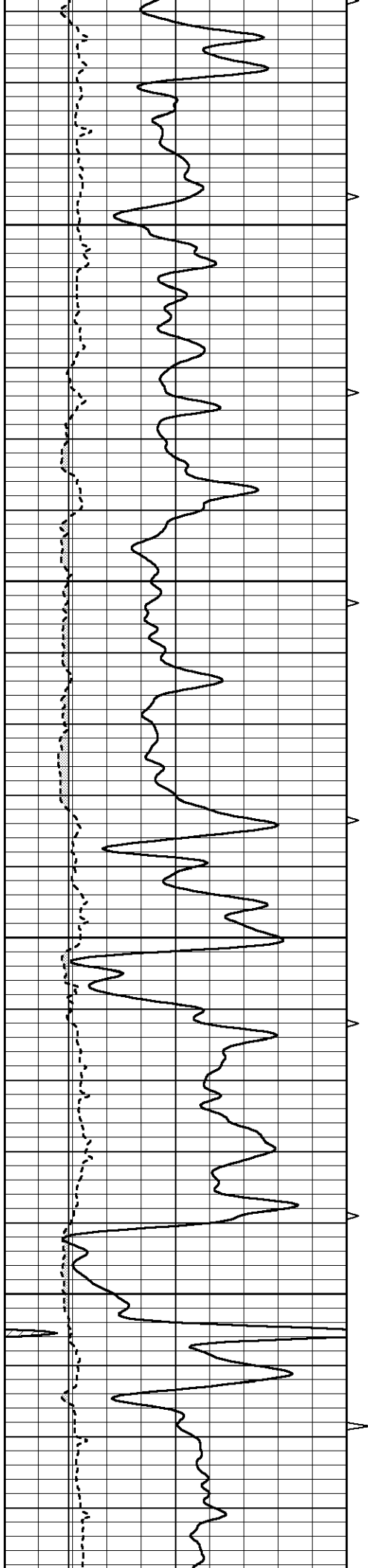






2800
2850
2900
2950
3000



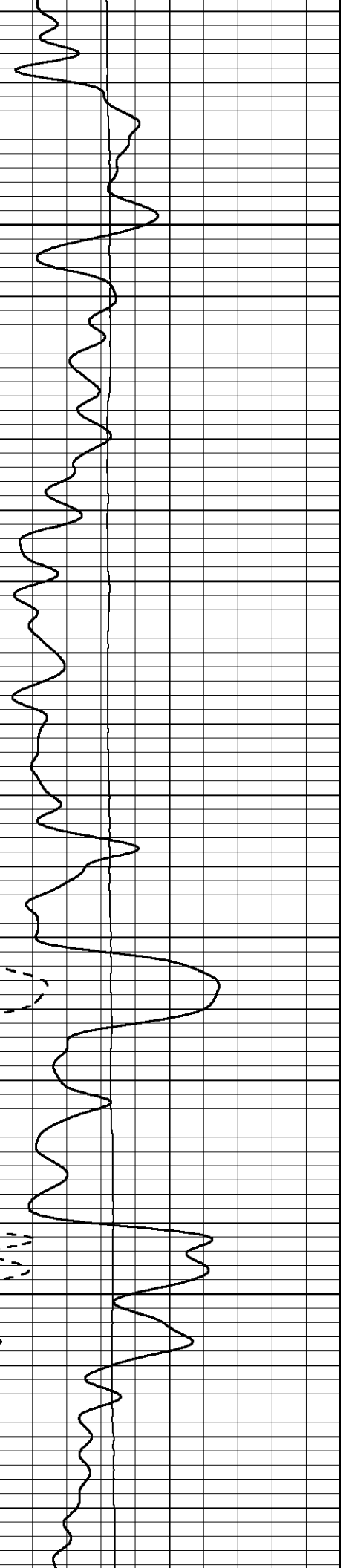
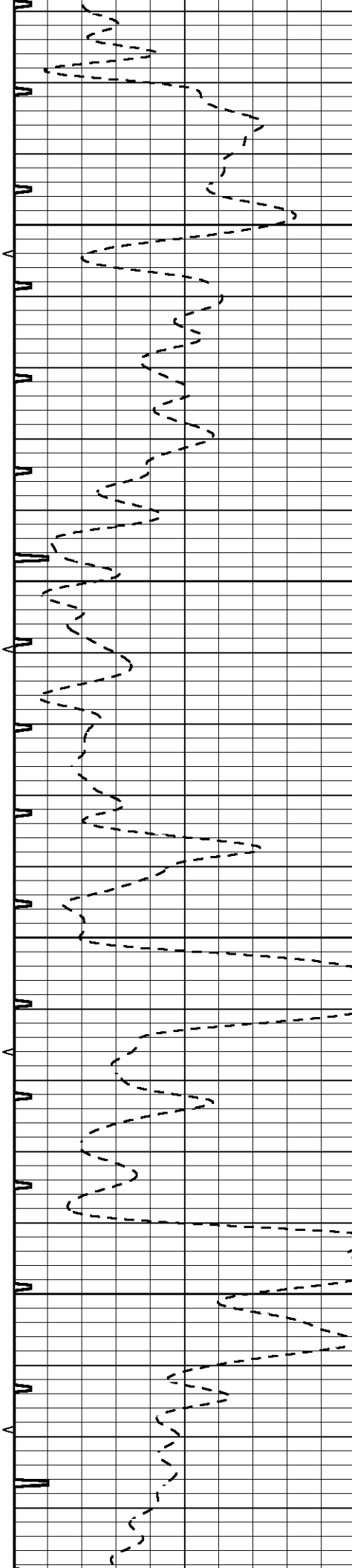


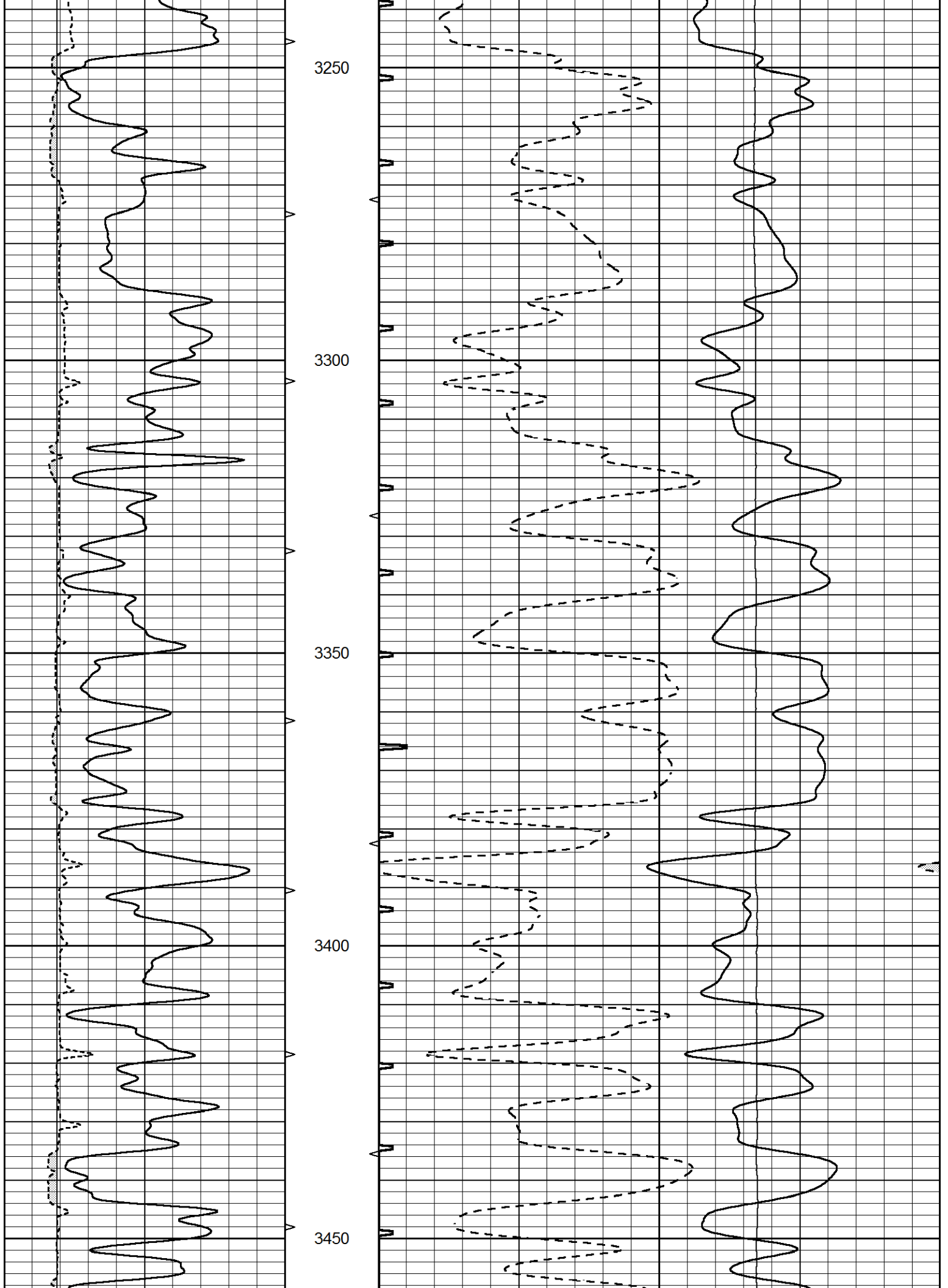
3050

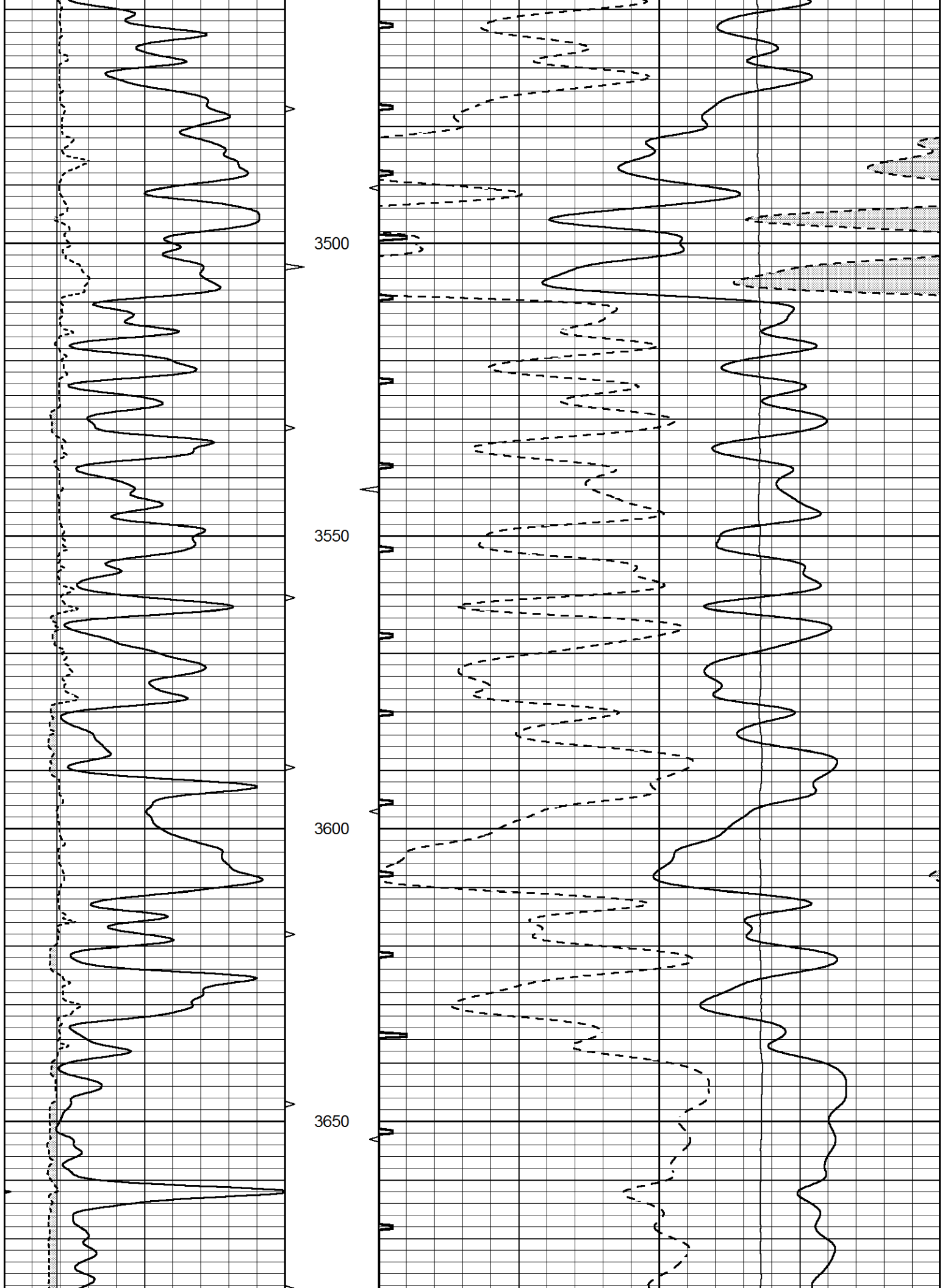
3100

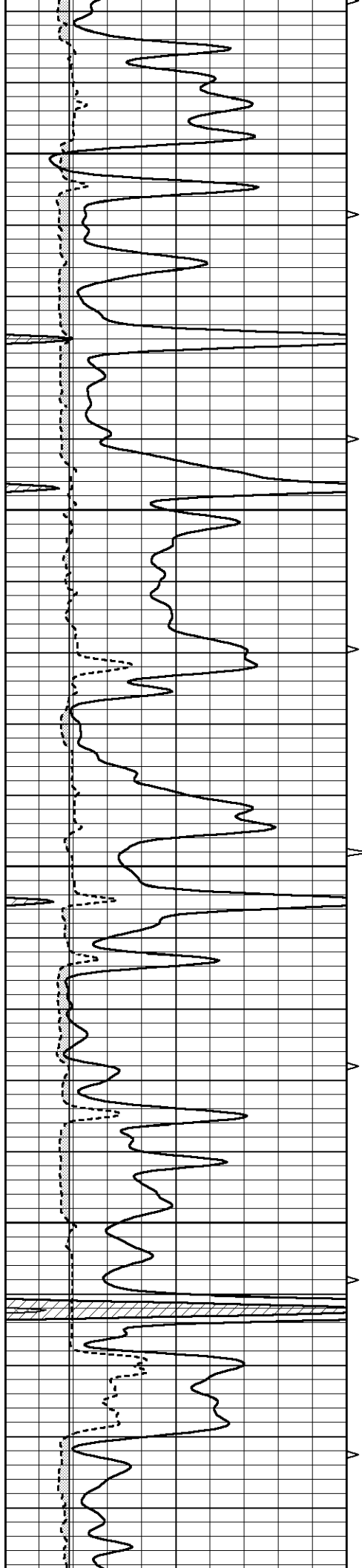
3150

3200







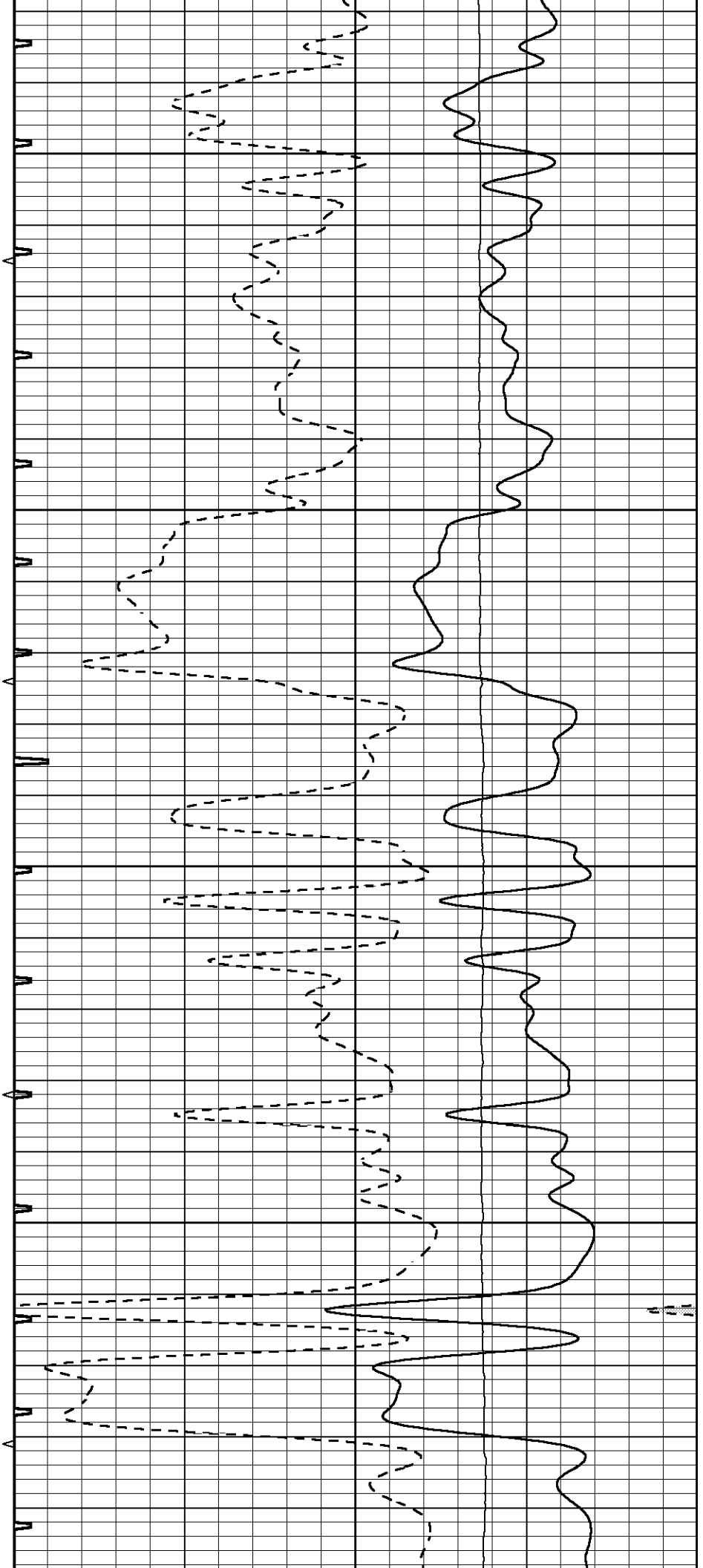


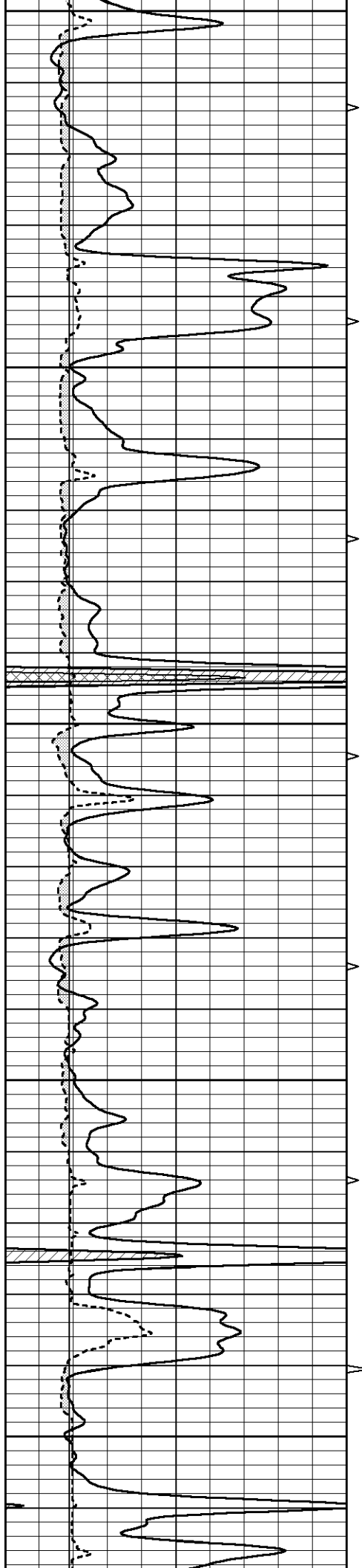
3700

3750

3800

3850





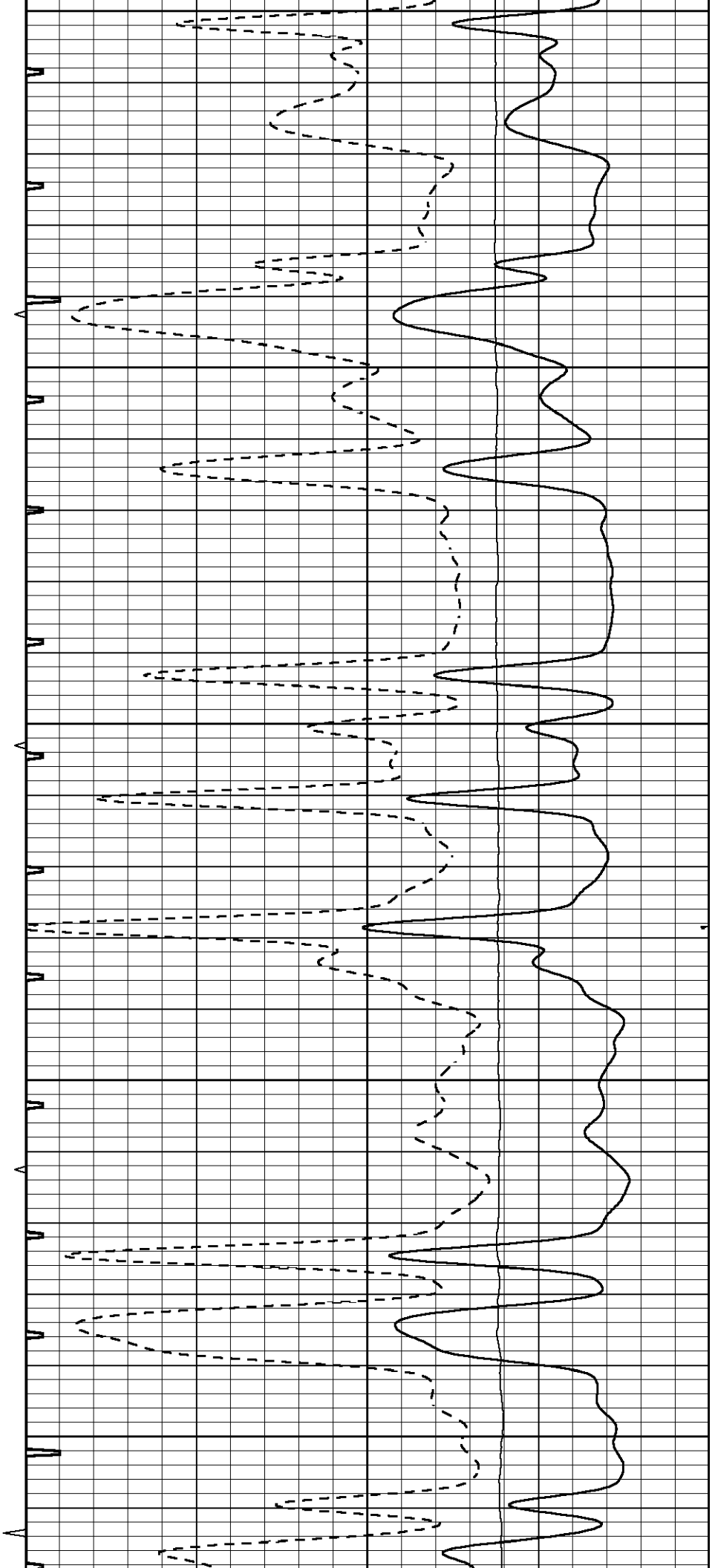
3900

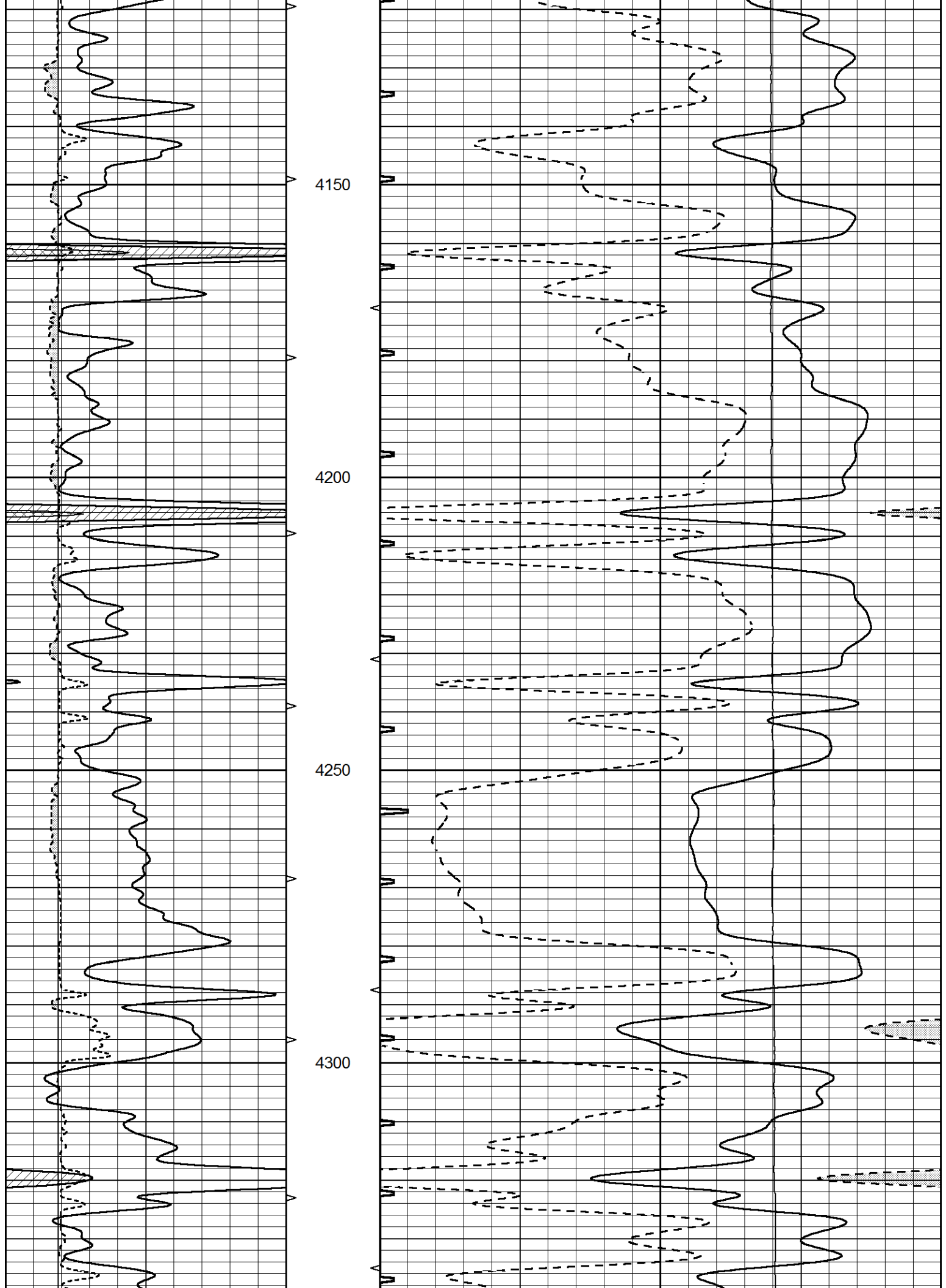
3950

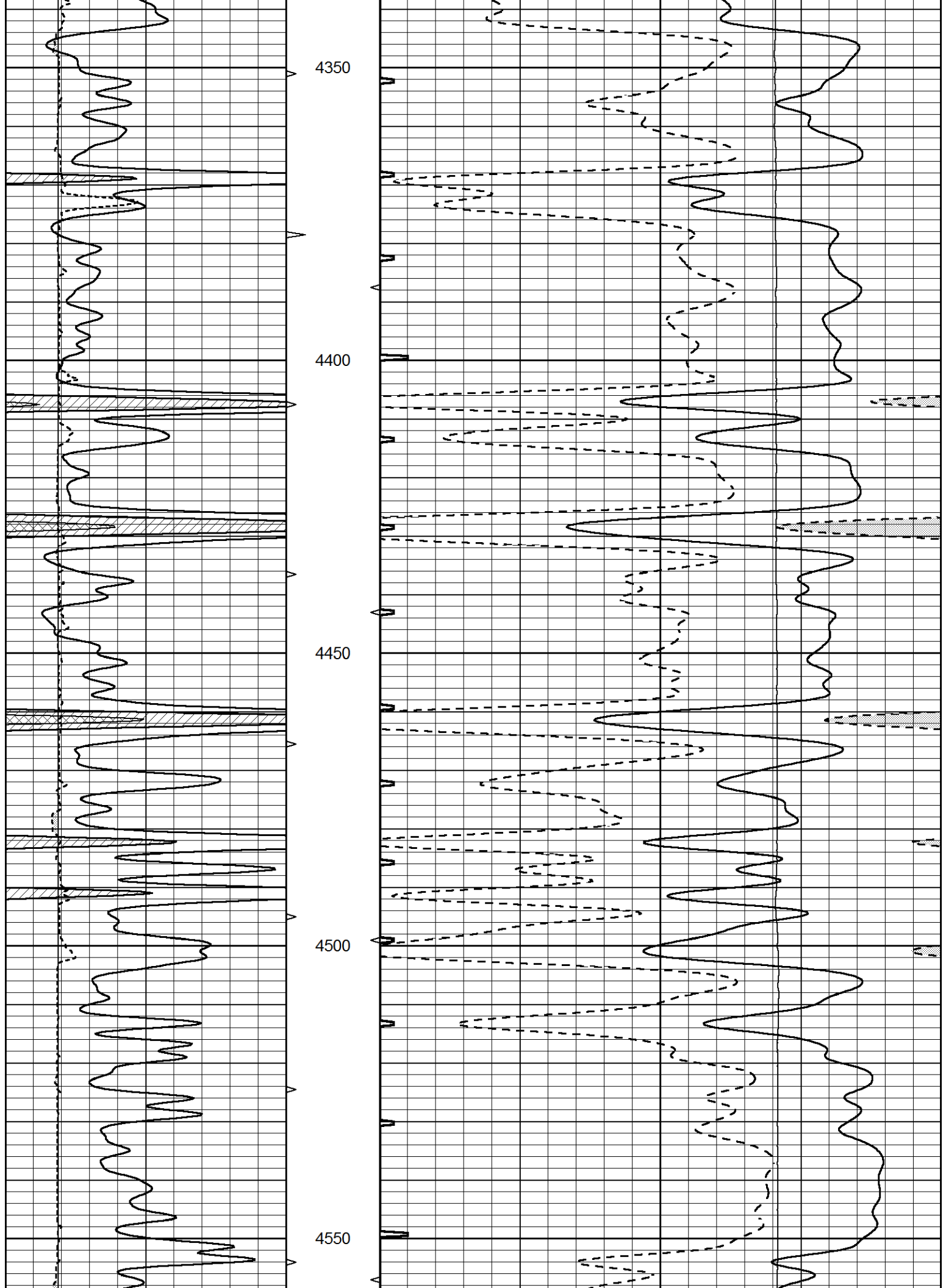
4000

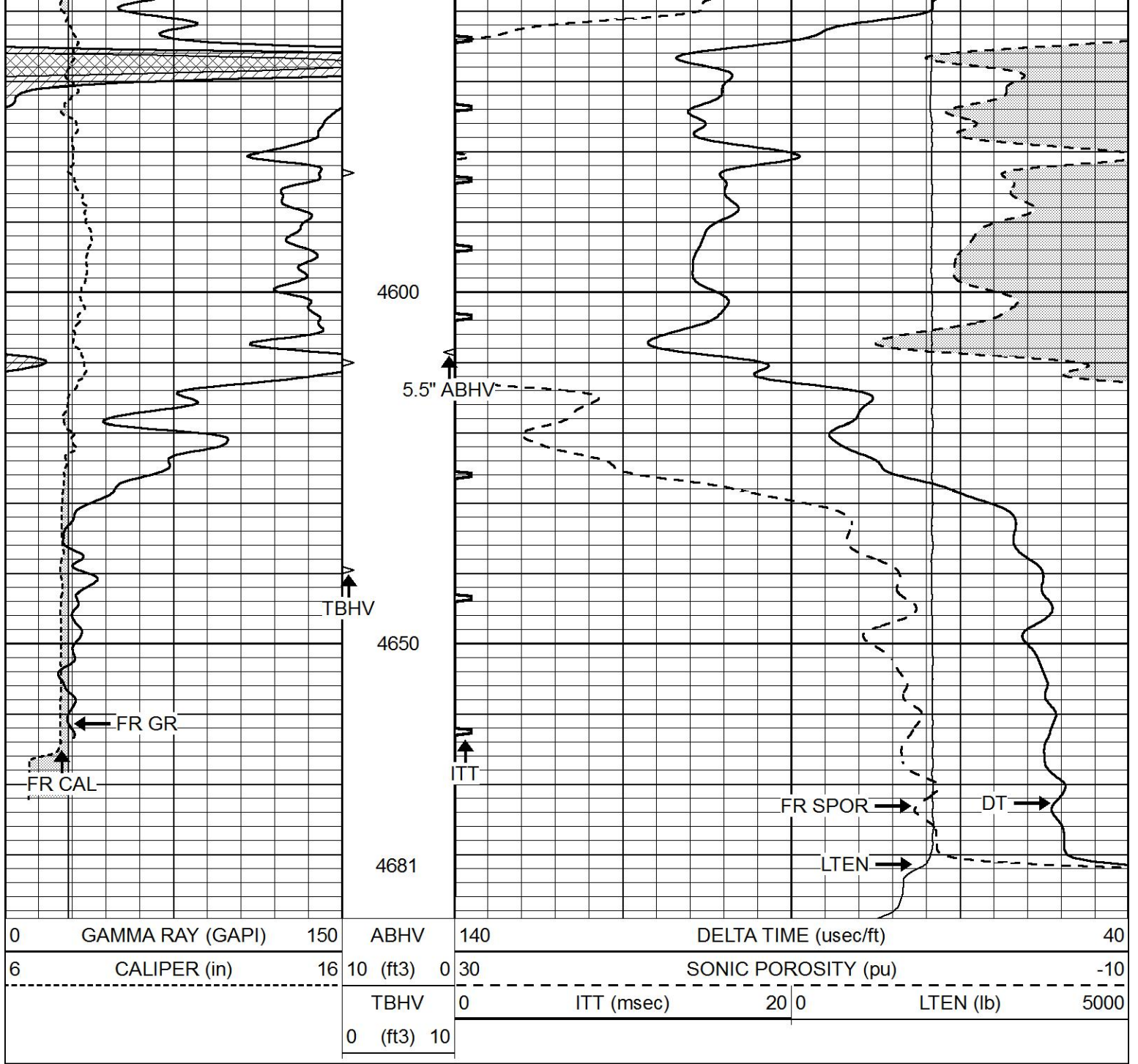
4050

4100





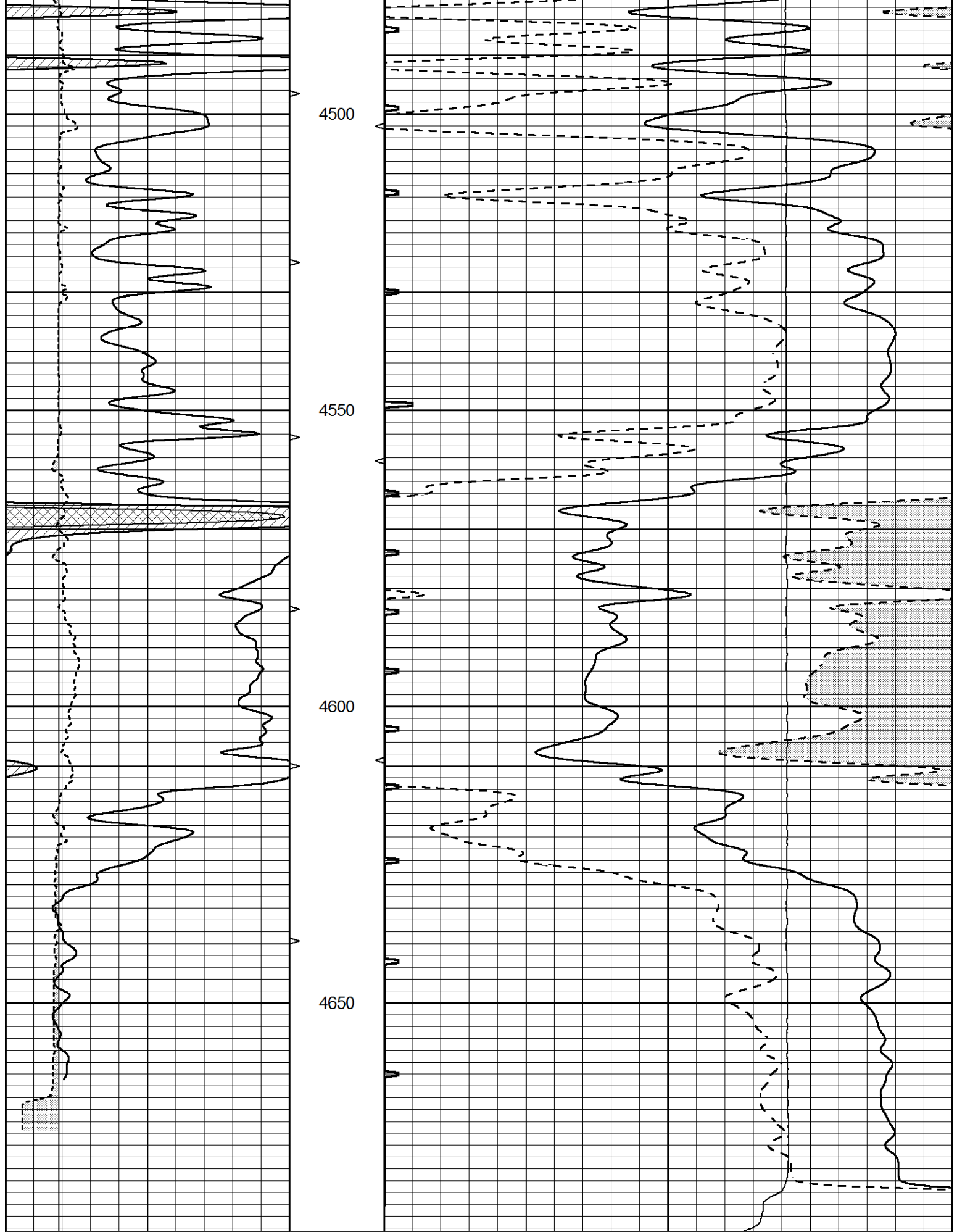




REPEAT SECTION

Database File 8672pe.db
 Dataset Pathname pass5R
 Presentation Format _slt
 Dataset Creation Wed Apr 24 12:59:03 2024
 Charted by Depth in Feet scaled 1:240

0	GAMMA RAY (GAPI)	150	ABHV	140	DELTA TIME (usec/ft)	40
6	CALIPER (in)	16	10 (ft3) 0	30	SONIC POROSITY (pu)	-10
			TBHV	0	ITT (msec)	20 0
			0 (ft3) 10		LTEN (lb)	5000



0	GAMMA RAY (GAPI)	150	ABHV	140	DELTA TIME (usec/ft)	40
6	CALIPER (in)	16	10 (ft3)	0 30	SONIC POROSITY (pu)	-10
			TRHV	0	ITT (msec)	20.0
					ITEN (lb)	5000

	FDIV	0	TTT (nsec)	20	0	LEN (lb)	5000
	0 (ft3)	10					