

MICRO LOG



Company PIONEER OIL COMPANY, INC.
 Well PHELPS #9-14
 Field UNNAMED
 County LOGAN State KANSAS

Location: API #: 15-109-21670-0000
 2258 FSL & 880 FEL
 SE - NW - NE - SE
 SEC 14 TWP 14S RGE 34W
 Permanent Datum GROUND LEVEL Elevation 3003
 Log Measured From KELLY BUSHING 11' A.G.L.
 Drilling Measured From KELLY BUSHING
 Other Services
 CDL/CNL/PE
 DIL/SON
 Elevation
 K.B. 3014
 D.F. 3012
 G.L. 3003

Date	4/24/24		
Run Number	TWO		
Depth Driller	4680		
Depth Logger	4681		
Bottom Logged Interval	4665		
Top Log Interval	3500		
Casing Driller	8 625 @ 224		
Casing Logger	224		
Bit Size	7.875		
Type Fluid in Hole	CHEMICAL MUD	CHLORIDES 3,000 PPM	
Density / Viscosity	9.1/68		
pH / Fluid Loss	11/8.0		
Source of Sample	FLOWLINE		
Rm @ Meas. Temp	1.10 @ 60F		
Rmf @ Meas. Temp	.825 @ 60F		
Rmc @ Meas. Temp	1.32 @ 60F		
Source of Rmf / Rmc	MEASUREMENT		
Rm @ BHT	.541 @ 122F		
Time Circulation Stopped	4 HOURS		
Time Logger on Bottom	12:00 P.M.		
Maximum Recorded Temperature	122F		
Equipment Number	3802		
Location	HAYS, KANSAS		
Recorded By	COLE ROBBEN		
Witnessed By	ROD ANDERSEN		

<<< Fold Here >>>

All interpretations are opinions based on inferences from electrical or other measurements and we cannot and do not guarantee the accuracy or correctness of any interpretation, and we shall not, except in the case of gross or willful negligence on our part, be liable or responsible for any loss, costs, damages, or expenses incurred or sustained by anyone resulting from any interpretation made by any of our officers, agents or employees. These interpretations are also subject to our general terms and conditions set out in our current Price Schedule.

Comments

THANK YOU FOR USING ELI WIRELINE SERVICES, HAYS, KS. (785) 628-6395

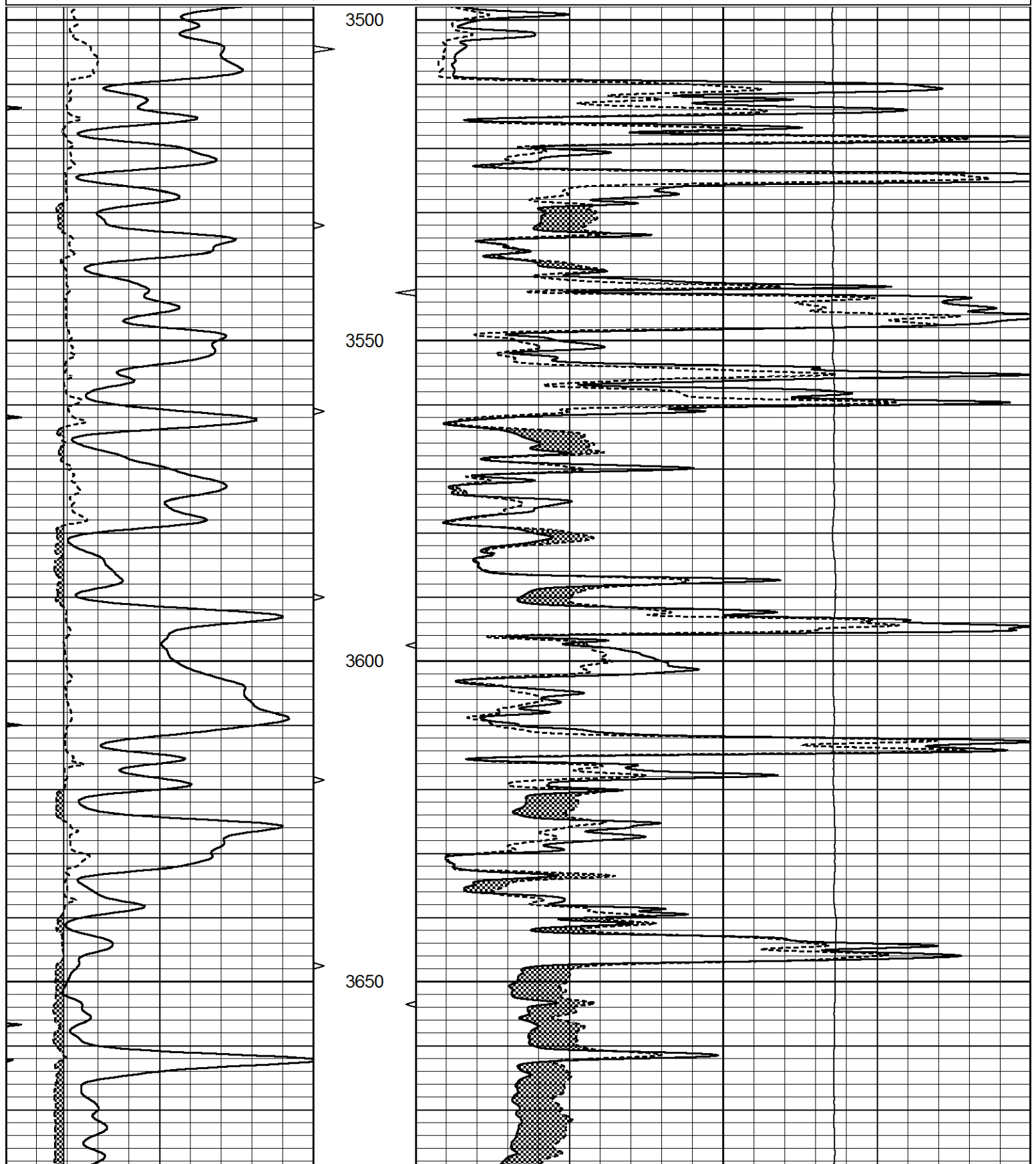
DIRECTIONS:
 FROM MONUMENT, KANSAS SOUTH 20 MILES ON 350TH TO INDIAN ROAD, 2 MILES WEST,
 1 MILE NORTH, WEST INTO

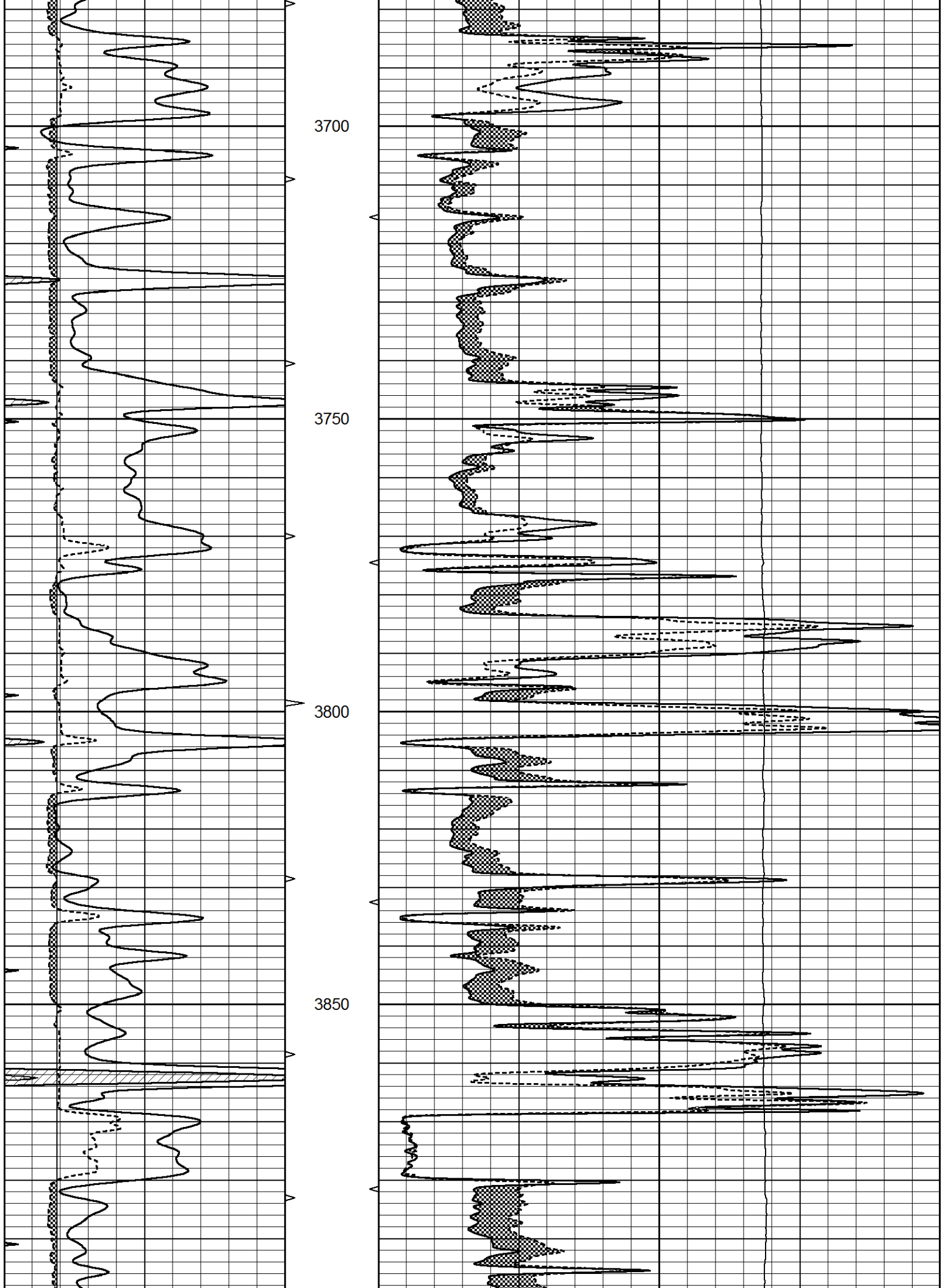


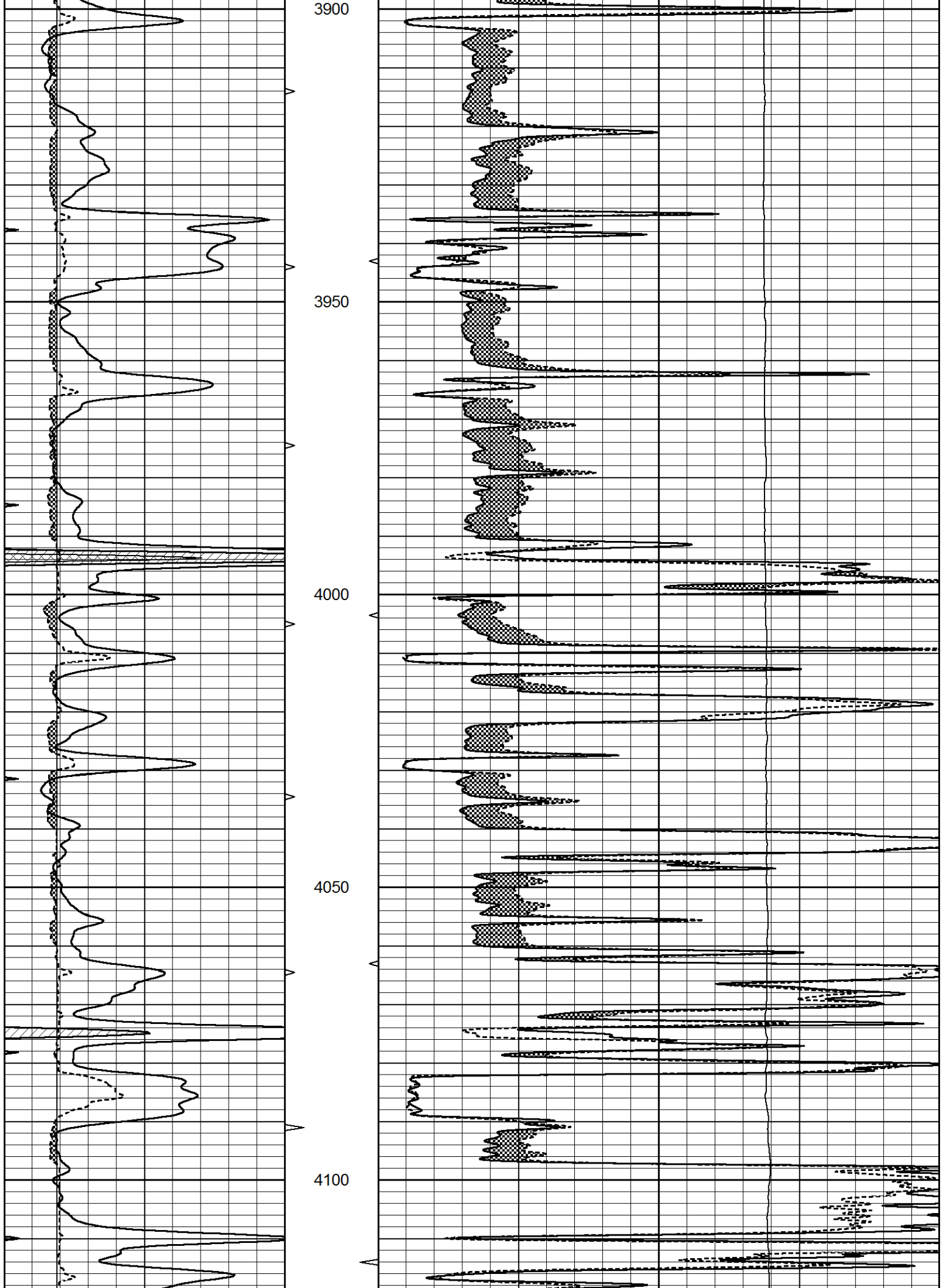
MAIN SECTION

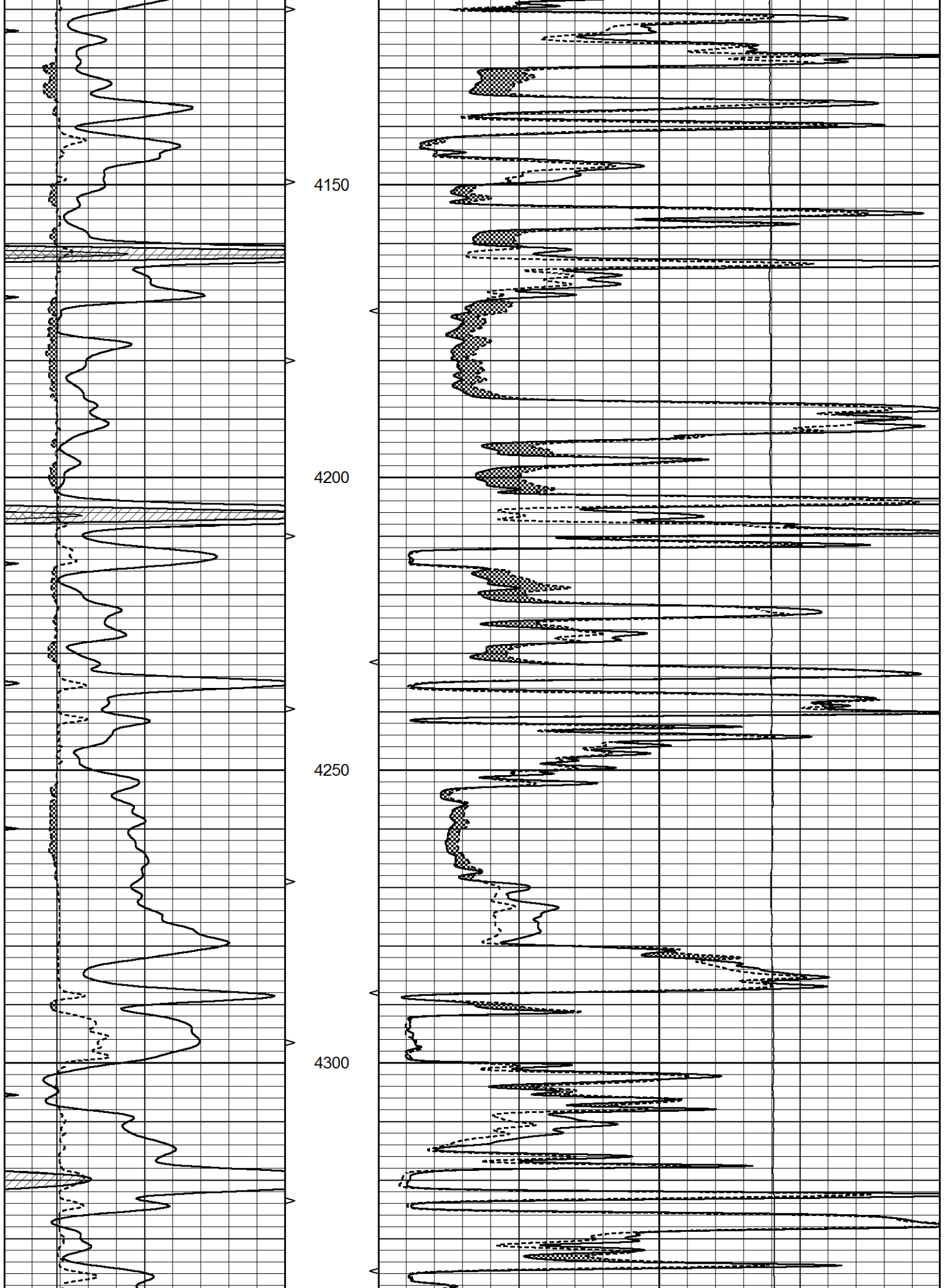
Database File 8672pe.db
 Dataset Pathname pass6D
 Presentation Format _micro
 Dataset Creation Wed Apr 24 12:50:38 2024
 Charted by Depth in Feet scaled 1:240

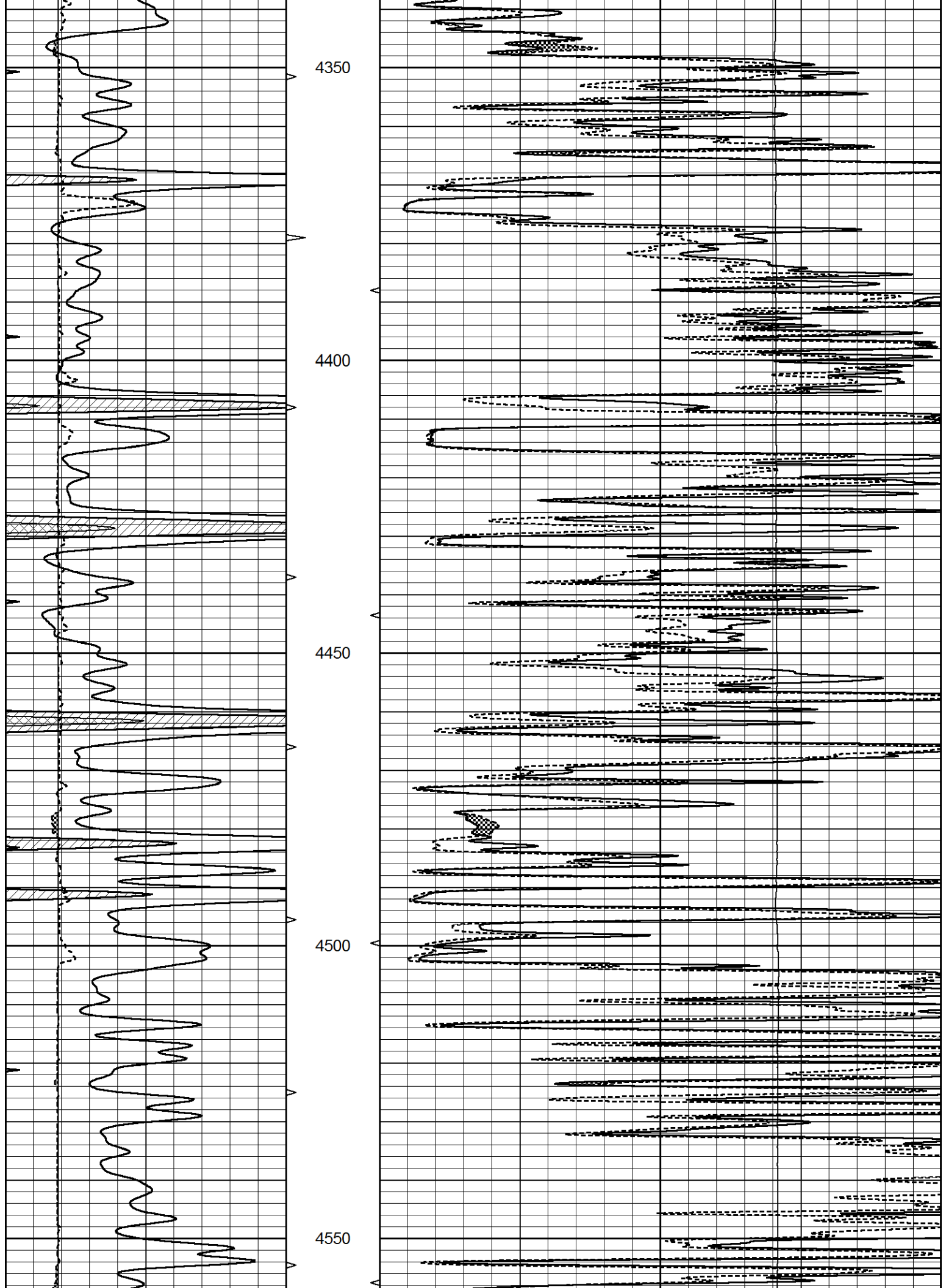
0	GAMMA RAY (GAPI)	150	ABHV	0	MEL1.5 (Ohm-m)	40
6	CALIPER (in)	16	10 (ft3)	0	MEL2.0 (Ohm-m)	40
0	MINMK	20	TBHV	0	LTEN (lb)	5000
			0 (ft3)	10		

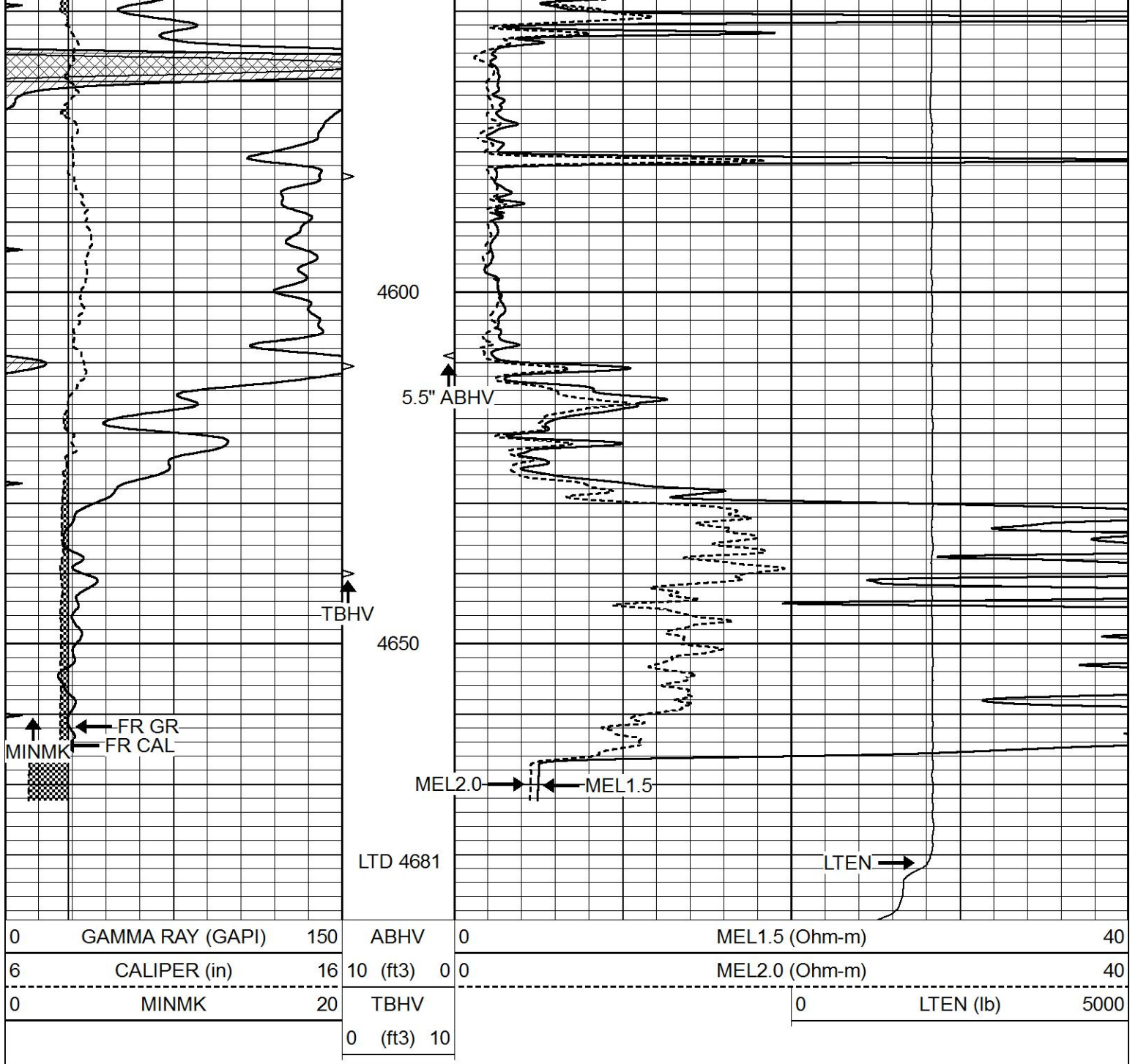








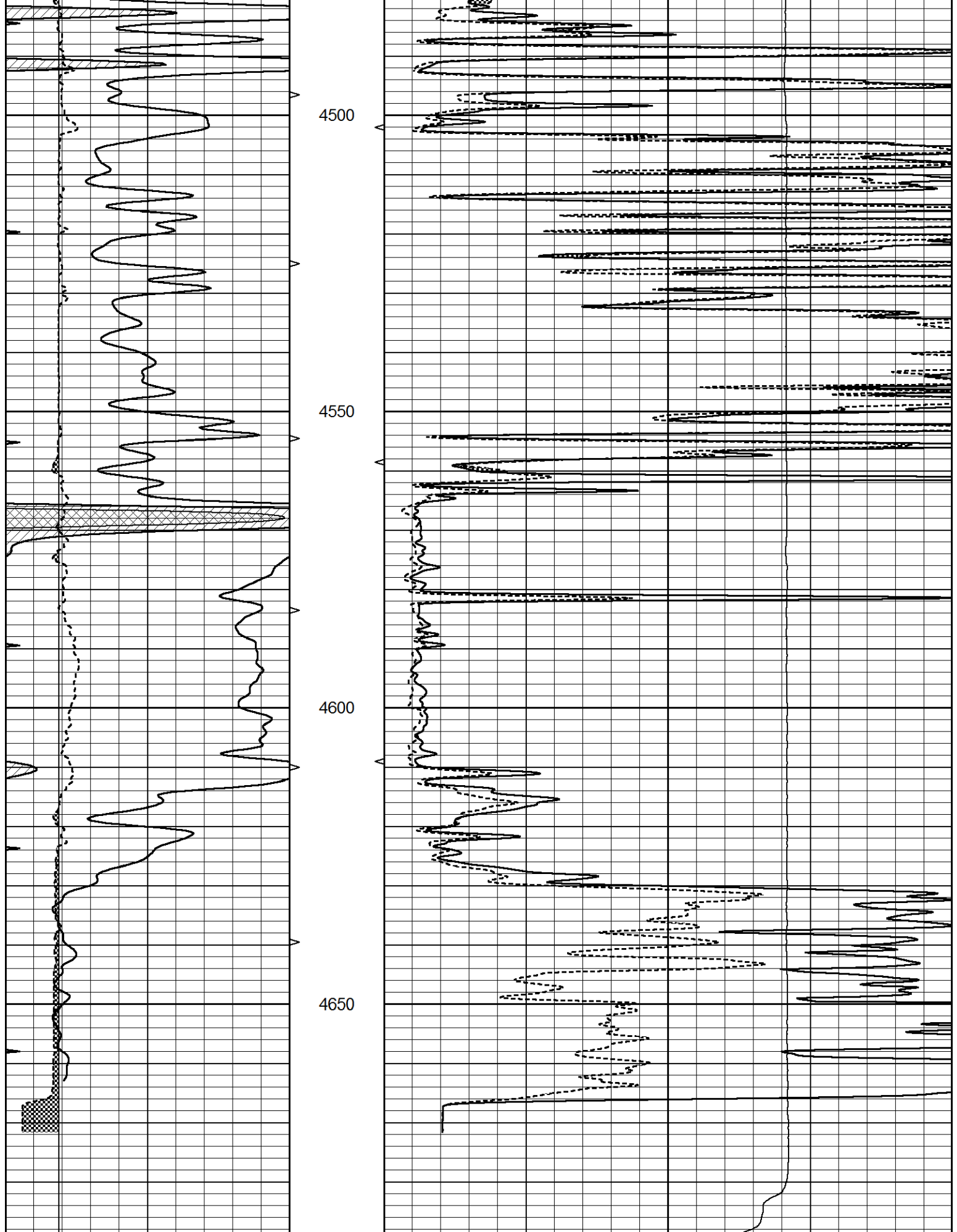




REPEAT SECTION

Database File 8672pe.db
 Dataset Pathname pass5R
 Presentation Format _micro
 Dataset Creation Wed Apr 24 12:59:03 2024
 Charted by Depth in Feet scaled 1:240

0	GAMMA RAY (GAPI)	150	ABHV	0	MEL1.5 (Ohm-m)	40
6	CALIPER (in)	16	10 (ft3) 0	0	MEL2.0 (Ohm-m)	40
0	MINMK	20	TBHV		0	LTEN (lb) 5000
			0 (ft3) 10			



0	GAMMA RAY (GAPI)	150	ABHV	0	MEL1.5 (Ohm-m)	40
6	CALIPER (in)	16	10 (ft3)	0 0	MEL2.0 (Ohm-m)	40
0	MINIK	20	TPBV	0	ITEN (lb)	5000

0	MINMR	20	FBTV	0	LEN (lb)	3000
		0	(ft3) 10			

Calibration Report

Database File 8672pe.db
 Dataset Pathname pass6D
 Dataset Creation Wed Apr 24 12:50:38 2024

MICRO_USR Calibration Report

Serial Number: 070911
 Tool Model: ProbeL
 Performed: Wed Mar 20 18:45:44 2024

Caliper Calibration: Gain=4.259 Offset=2.170

	Low Cal	High Cal
References	8.000	14.000
Readings	1.427	2.836

1.5" Calibration: Gain=33.000 Offset=-0.079

	Low Cal	High Cal
References	0.000	20.000
Readings	0.005	1.240

2" Calibration: Gain=50.000 Offset=-0.800

	Low Cal	High Cal
References	0.000	20.000
Readings	0.004	1.075

Microlog Calibration Report

Serial-Model: 070911-ProbeL
 Performed: Sat May 14 04:48:25 2022

	Readings			References			Results	
	Zero	Cal		Zero	Cal		m	b
Normal	0.0002	0.4836	V	0.0000	10.0000	Ohm-m	20.6908	-0.0051
Inverse	0.0018	0.6297	V	0.0000	10.0000	Ohm-m	15.9263	-0.0282
Caliper	0.0000	1.0000	V	0.0000	1.0000	in	1.0000	0.0000

Gamma Ray Calibration Report

Serial Number: 070558
 Tool Model: Probe1
 Performed: Sat Sep 30 18:38:35 2023

Calibrator Value: 1.0 GAPI

Background Reading: 0.0 cps
 Calibrator Reading: 1.0 cps

Sensitivity: 0.2700 GAPI/cps