



**COMPENSATED
DENSITY/NEUTRON
PE LOG**

Company PIONEER OIL COMPANY, INC.

Well PHELPS #9-14

Field UNNAMED

County LOGAN State KANSAS

Location: API #: 15-109-21670-0000

2258 FSL & 880 FEL
SE - NW - NE - SE

SEC 14 TWP 14S RGE 34W

Other Services
DILMEL
SONIC

Permanent Datum GROUND LEVEL Elevation 3003
Log Measured From KELLY BUSHING 11' A.G.L.
Drilling Measured From KELLY BUSHING

Elevation
K.B. 3014
D.F. 3012
G.L. 3003

Date	4/24/24		
Run Number	ONE		
Depth Driller	4680		
Depth Logger	4681		
Bottom Logged Interval	4657		
Top Log Interval	3500		
Casing Driller	8 625 @ 224		
Casing Logger	224		
Bit Size	7.875		
Type Fluid in Hole	CHEMICAL MUD	CHLORIDES 3,000 PPM	
Density / Viscosity	9.1/68		
pH / Fluid Loss	11/8.0		
Source of Sample	FLOWLINE		
Rm @ Meas. Temp	1.10 @ 60F		
Rmf @ Meas. Temp	.825 @ 60F		
Rmc @ Meas. Temp	1.32 @ 60F		
Source of Rmf / Rmc	MEASUREMENT		
Rm @ BHT	.541 @ 122F		
Time Circulation Stopped	2 HOURS		
Time Logger on Bottom	10:00 A.M.		
Maximum Recorded Temperature	122F		
Equipment Number	3802		
Location	HAYS, KANSAS		
Recorded By	COLE ROBBERN		
Witnessed By	ROD ANDERSEN		

<<< Fold Here >>>

All interpretations are opinions based on inferences from electrical or other measurements and we cannot and do not guarantee the accuracy or correctness of any interpretation, and we shall not, except in the case of gross or willful negligence on our part, be liable or responsible for any loss, costs, damages, or expenses incurred or sustained by anyone resulting from any interpretation made by any of our officers, agents or employees. These interpretations are also subject to our general terms and conditions set out in our current Price Schedule.

Comments

THANK YOU FOR USING ELI WIRELINE SERVICES, HAYS, KS. (785) 628-6395

DIRECTIONS:

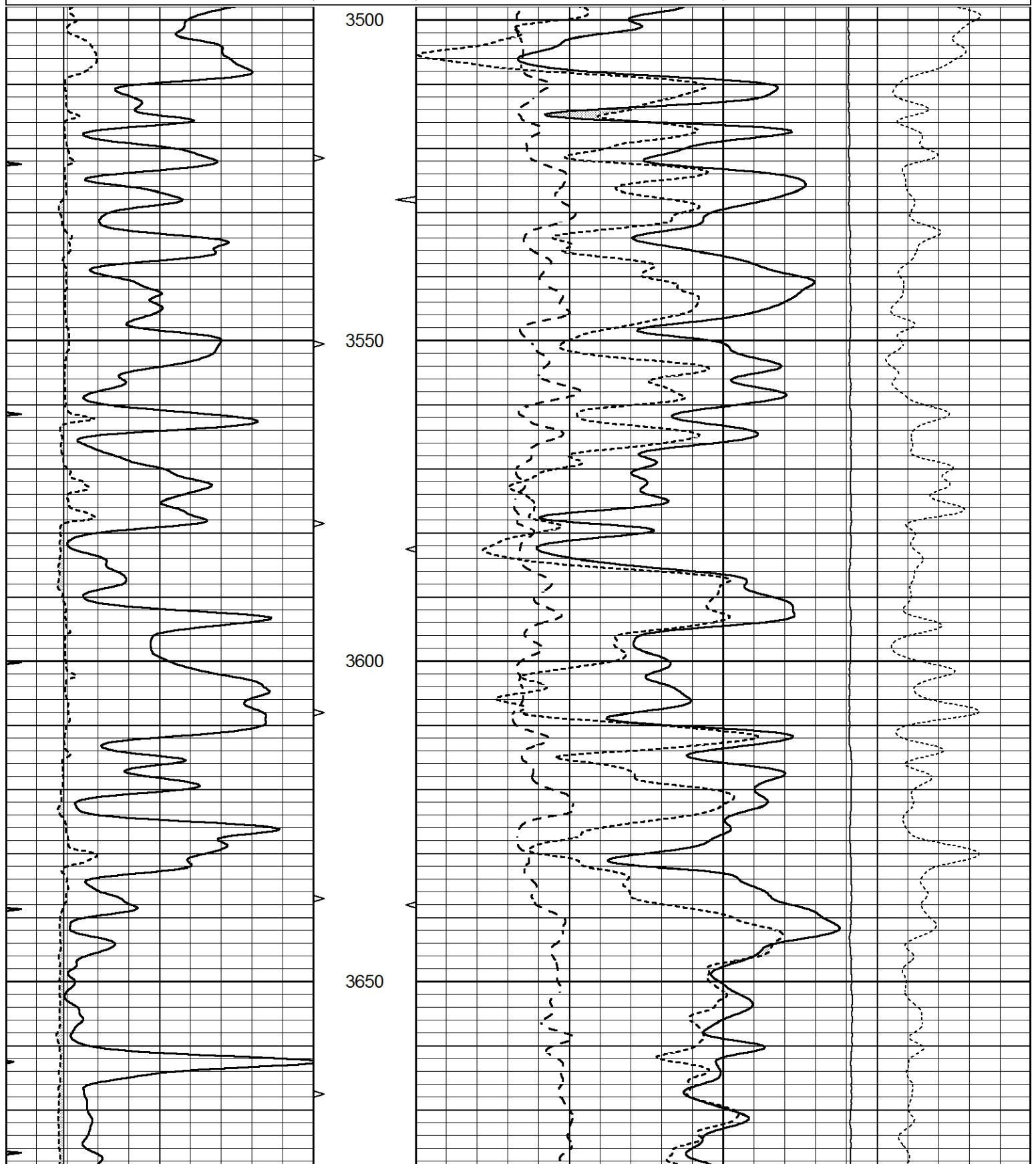
FROM MONUMENT, KANSAS SOUTH 20 MILES ON 350TH TO INDIAN ROAD, 2 MILES WEST,
1 MILE NORTH, WEST INTO

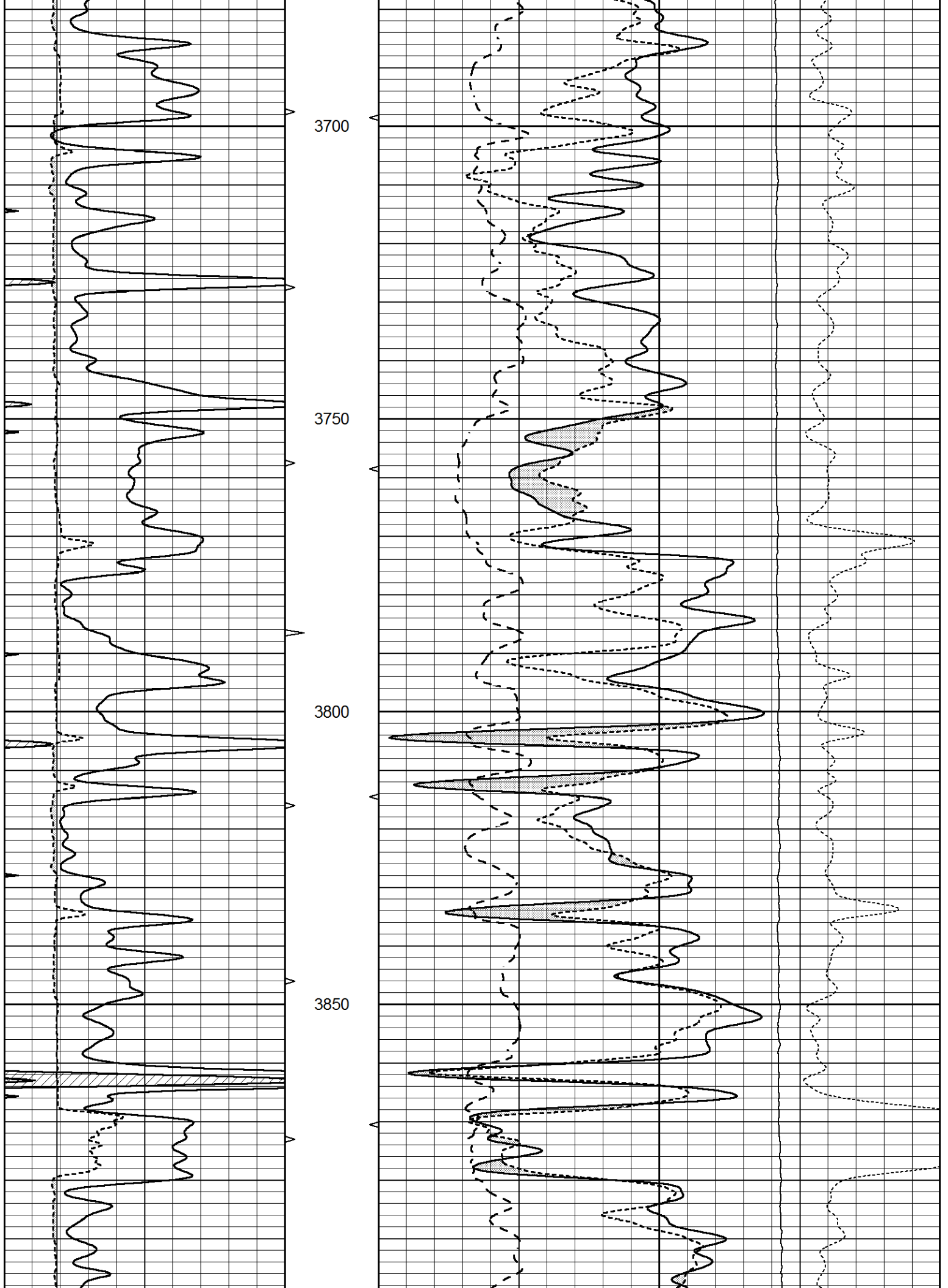


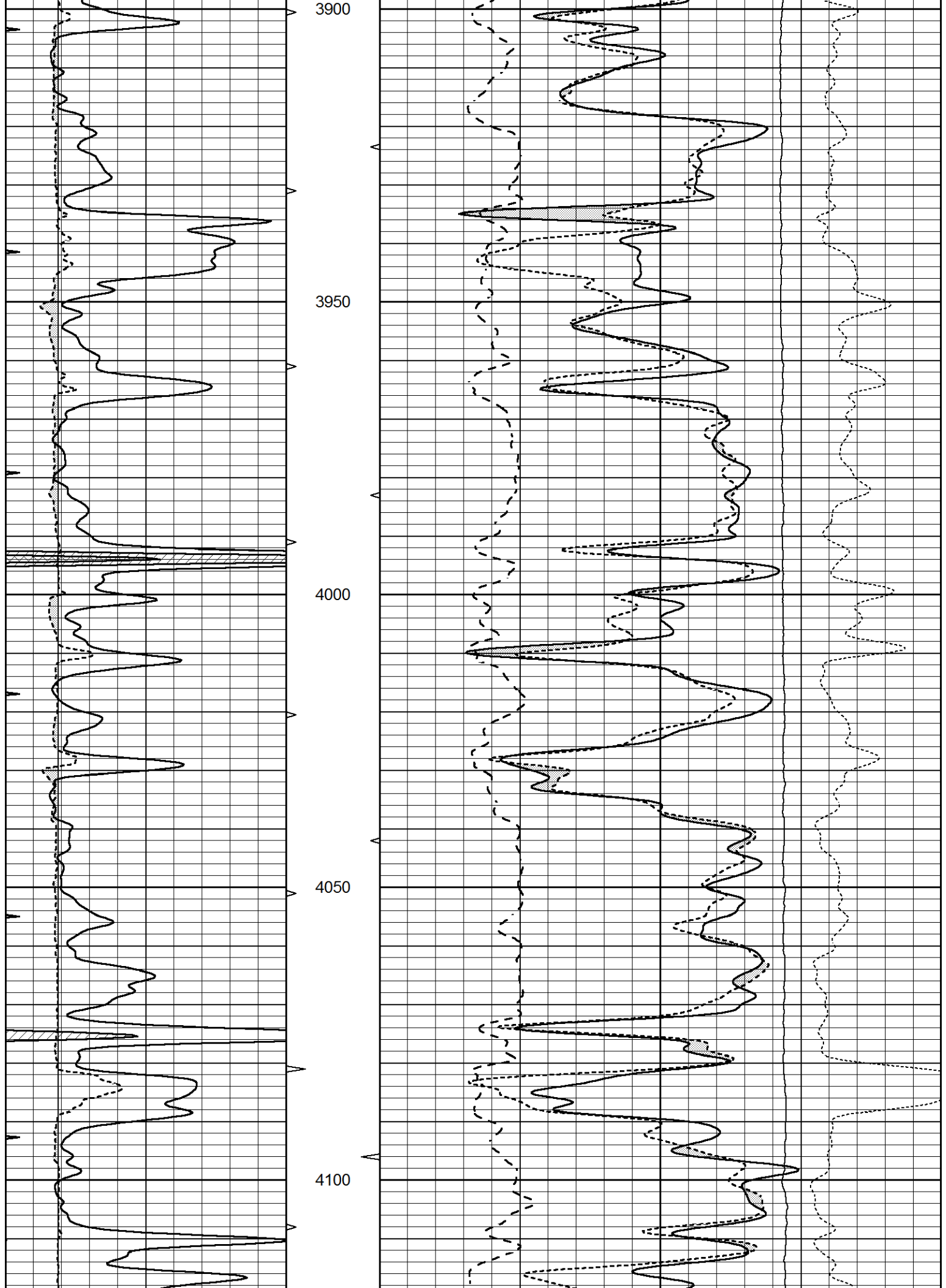
MAIN SECTION

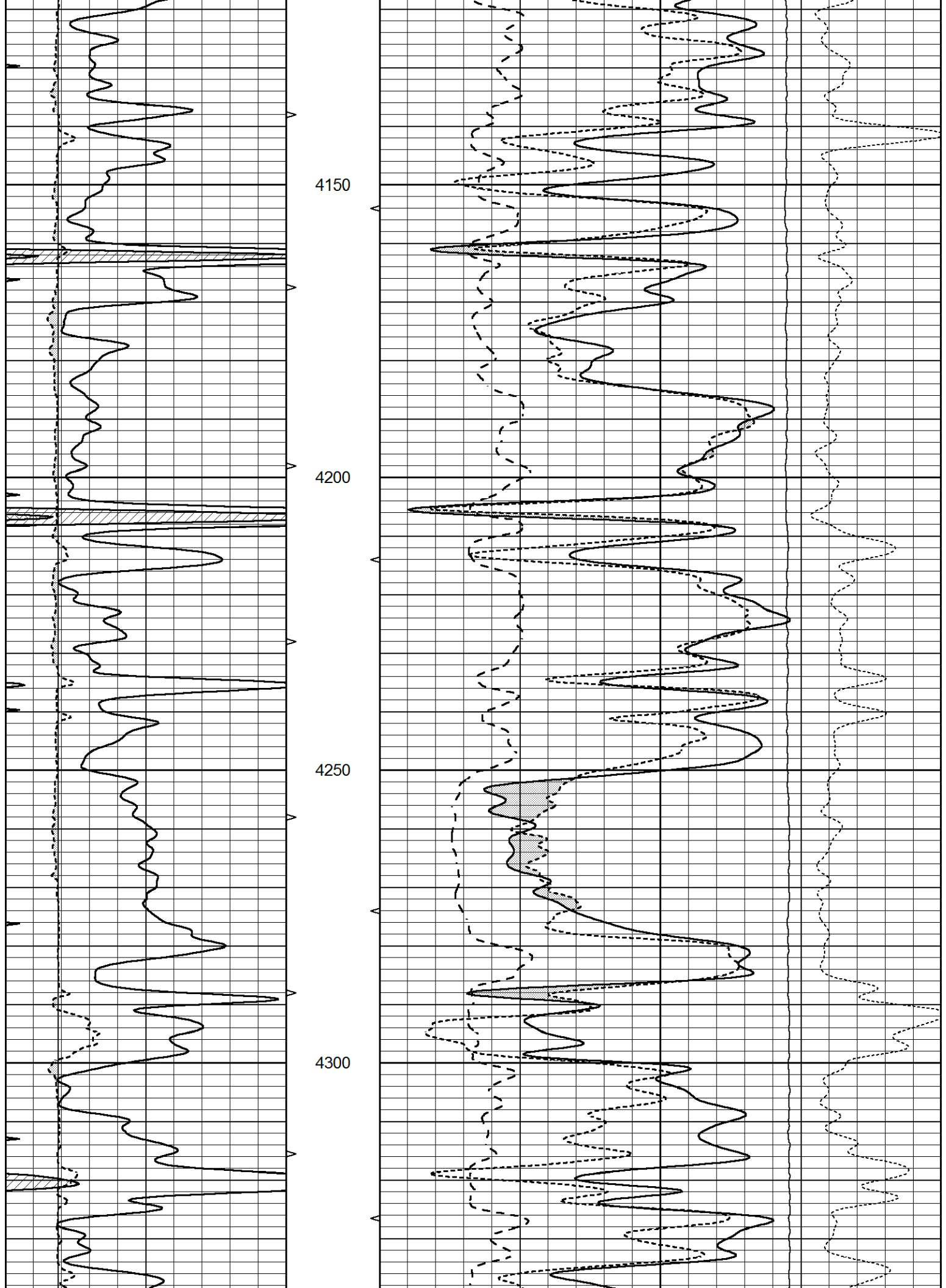
Database File 8672pe.db
 Dataset Pathname pass3D
 Presentation Format _ldt_neu
 Dataset Creation Wed Apr 24 11:00:10 2024
 Charted by Depth in Feet scaled 1:240

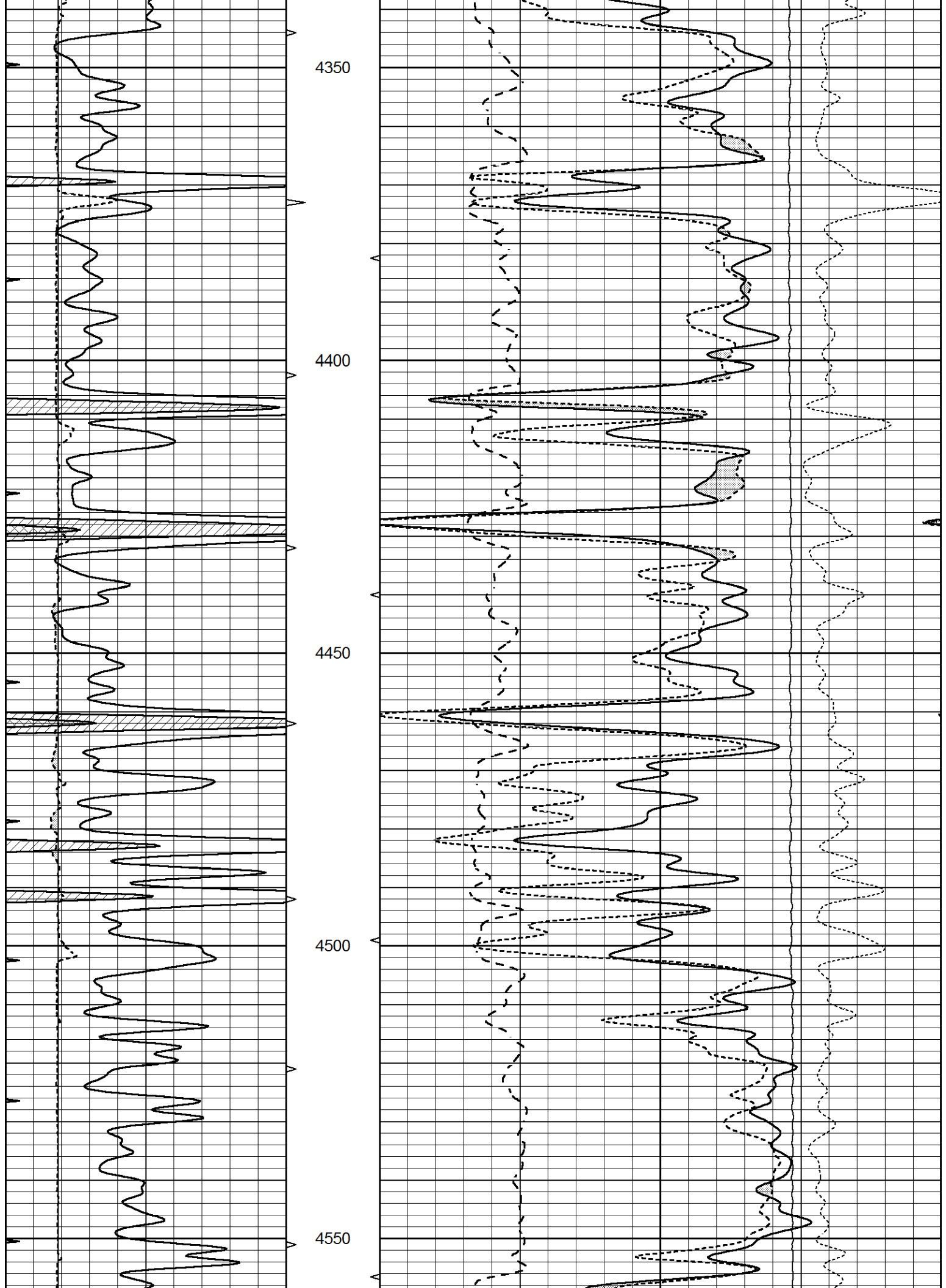
0	GAMMA RAY (GAPI)	150	ABHV	30	COMPENSATED DENSITY (pu)			-10	
6	CALIPER (in)	16	10 (ft3)	0	COMPENSATED NEUTRON (pu)			-10	
0	MINMK	20	TBHV	0	PE	10	-0.25	CORRECTION (g/cc)	0.25
			0 (ft3)	10			0	LTEN (lb)	5000

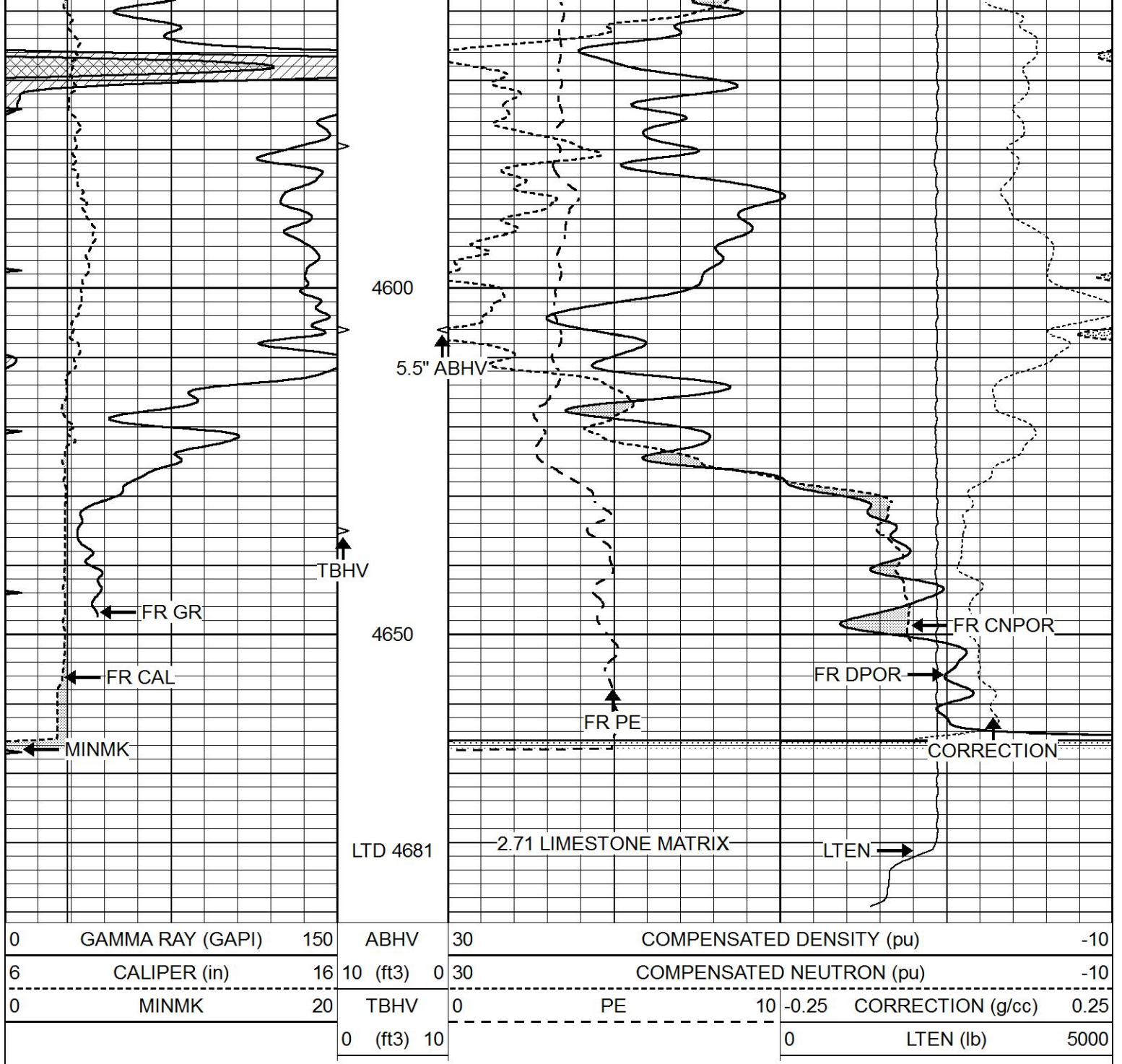








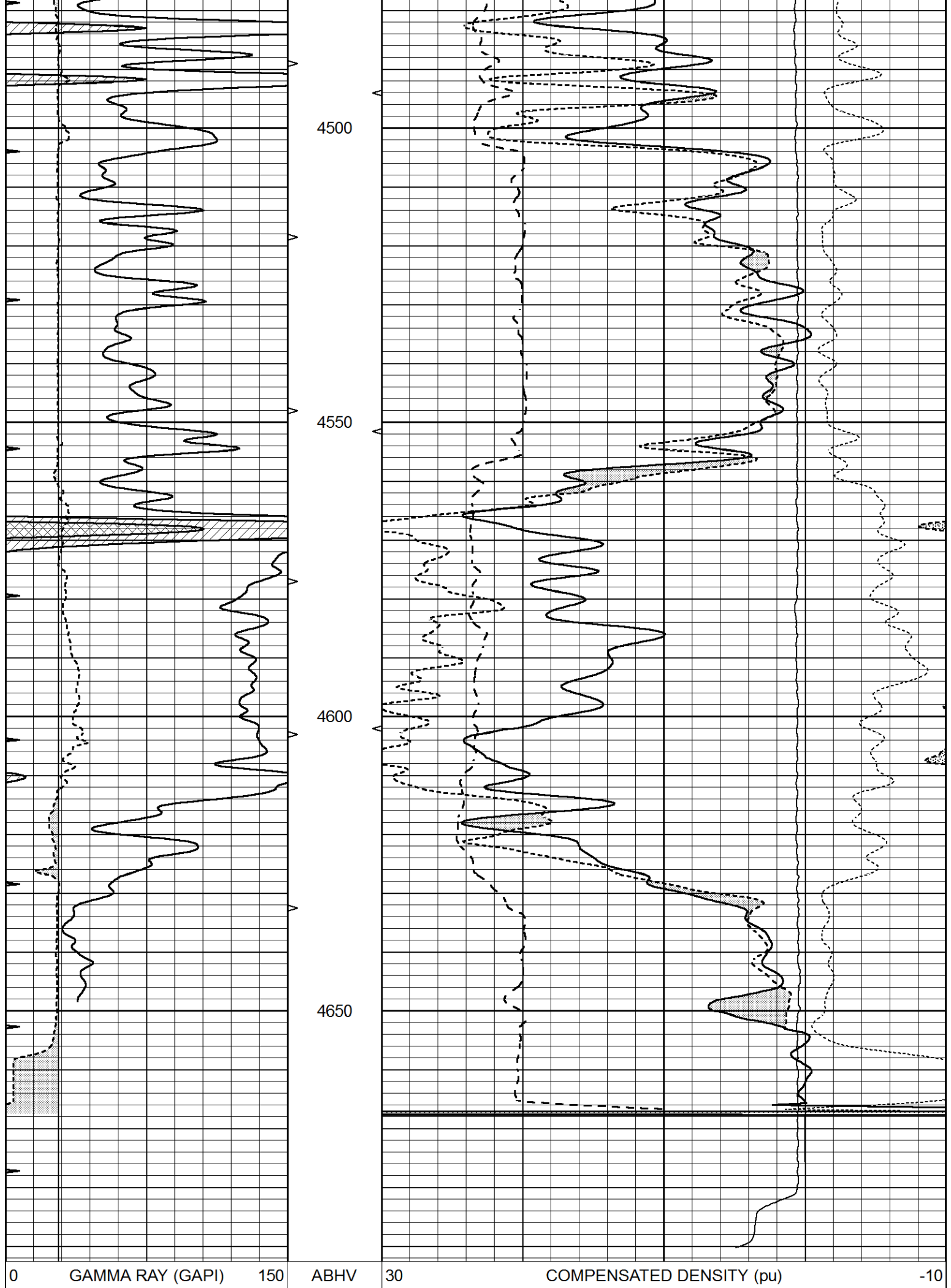




REPEAT SECTION

Database File 8672pe.db
 Dataset Pathname pass2R
 Presentation Format _ldt_neu
 Dataset Creation Wed Apr 24 12:10:03 2024
 Charted by Depth in Feet scaled 1:240

0	GAMMA RAY (GAPI)	150	ABHV	30	COMPENSATED DENSITY (pu)	-10
6	CALIPER (in)	16	10 (ft3)	0 30	COMPENSATED NEUTRON (pu)	-10
0	MINMK	20	TBHV	0	PE	10 -0.25 CORRECTION (g/cc) 0.25
			0 (ft3)	10		0 LTEN (lb) 5000



6	CALIPER (in)	16	10 (ft3)	0	30	COMPENSATED NEUTRON (pu)	-10
0	MINMK	20	TBHV	0	PE	10	-0.25 CORRECTION (g/cc) 0.25
			0 (ft3) 10				0 LTEN (lb) 5000

Calibration Report

Database File 8672pe.db
 Dataset Pathname pass3D
 Dataset Creation Wed Apr 24 11:00:10 2024

Dual Induction Calibration Report

Serial-Model: FW1410-55-Probe
 Surface Cal Performed: Sat Jul 29 01:57:42 2023
 Downhole Cal Performed: Tue Feb 19 11:44:24 2019
 After Survey Verification Performed: Tue Feb 19 11:44:27 2019

Surface Calibration

Loop:	Readings			References			Results	
	Air	Loop		Air	Loop		m	b
Deep	0.011	0.656	V	1.000	400.000	mmho/m	565.000	-5.500
Medium	-0.000	0.731	V	1.000	464.000	mmho/m	530.000	-9.000
Internal:	Zero	Cal		Zero	Cal		m	b
Deep	0.007	0.649	V	0.000	400.000	mmho/m	623.784	-4.595
Medium	0.004	0.743	V	0.000	464.000	mmho/m	627.284	-2.251

Downhole Calibration

	Readings			References			Results	
	Zero	Cal		Zero	Cal		m'	b'
Deep	-0.824	395.917	mmho/m	-0.976	397.550	mmho/m	1.004	-0.149
Medium	3.565	471.327	mmho/m	3.468	471.590	mmho/m	1.001	-0.099
LL3		7.503	V		1500.000	Ohm-m		
		0.001	V		20.000	Ohm-m		
		-7.481	V		3745.000	mmho-m		

After Survey Verification

	Readings			Targets			Results	
	Zero	Cal		Zero	Cal		m'	b'
Deep	0.000	0.000	mmho/m	-0.824	395.917	mmho/m	1.000	0.000
Medium	0.000	0.000	mmho/m	3.565	471.327	mmho/m	1.000	0.000
LL3		0.000	Ohm-m		1500.000	Ohm-m		
		0.000	Ohm-m		20.000	Ohm-m		
		0.000	mmho-m		3745.000	mmho-m		

Litho Density Calibration Report
 Serial: 002 Model: PRB

Master Calibration

Performed Tue Mar 05 14:38:26 2024

	Background	Magnesium	Aluminum	Aluminum+Fe	
Window 1	725.2	6706.7	2064.1	1781.5	cps
Window 2	662.7	5683.9	1787.4	1577.3	cps
Window 3	531.1	2851.1	1038.7	963.2	cps
Window 4	159.2	158.7	158.9	156.4	cps
Long Space	0.0	5021.2	1124.6	914.6	cps
Short Space	1.4	1196.9	818.3	680.9	cps
Rho		1.7100	2.5900	0.0000	g/cc
Pe		2.0000	2.7500	5.7900	

Rib Angle	: 45.7	Rib Slope	: 1.026	Density/Spine Ratio	: 0.570
Spine Angle	: 75.7	Spine Slope	: 3.935	Spine Intercept	: -19.4

Before Survey Verification

Performed Wed Dec 31 18:00:00 1969

Window 1	0.0	0.0	0.0	0.0	cps
Window 2	0.0	0.0	0.0	0.0	cps
Window 3	0.0	0.0	0.0	0.0	cps
Window 4	0.0	0.0	0.0	0.0	cps
Long Space	0.0	0.0	0.0	0.0	cps
Short Space	0.0	0.0	0.0	0.0	cps
Measured Rho		0.0000	0.0000	0.0000	g/cc
Measured Correction		0.0000	0.0000	0.0000	g/cc
Measured Pe			0.0000	0.0000	

After Survey Verification

Performed Wed Dec 31 18:00:00 1969

Window 1	0.0	0.0	0.0	0.0	cps
Window 2	0.0	0.0	0.0	0.0	cps
Window 3	0.0	0.0	0.0	0.0	cps
Window 4	0.0	0.0	0.0	0.0	cps
Long Space	0.0	0.0	0.0	0.0	cps
Short Space	0.0	0.0	0.0	0.0	cps
Measured Rho		0.0000	0.0000	0.0000	g/cc
Measured Correction		0.0000	0.0000	0.0000	g/cc
Measured Pe			0.0000	0.0000	

Compensated Neutron Calibration Report

Serial Number: 080621PMC
Tool Model: NABORS

PRE-SURVEY VERIFICATION

Detector	Readings	Measured	Target
Short Space	cps		
Long Space	cps	pu	pu

POST-SURVEY VERIFICATION

Detector	Readings	Measured	Target
Short Space	cps		
Long Space	cps	pu	pu

Gamma Ray Calibration Report

Serial Number:	46001	
Tool Model:	Probe1	
Performed:	Thu Apr 20 09:55:57 2023	
Calibrator Value:	1.0	GAPI
Background Reading:	0.0	cps
Calibrator Reading:	1.0	cps
Sensitivity:	0.4300	GAPI/cps