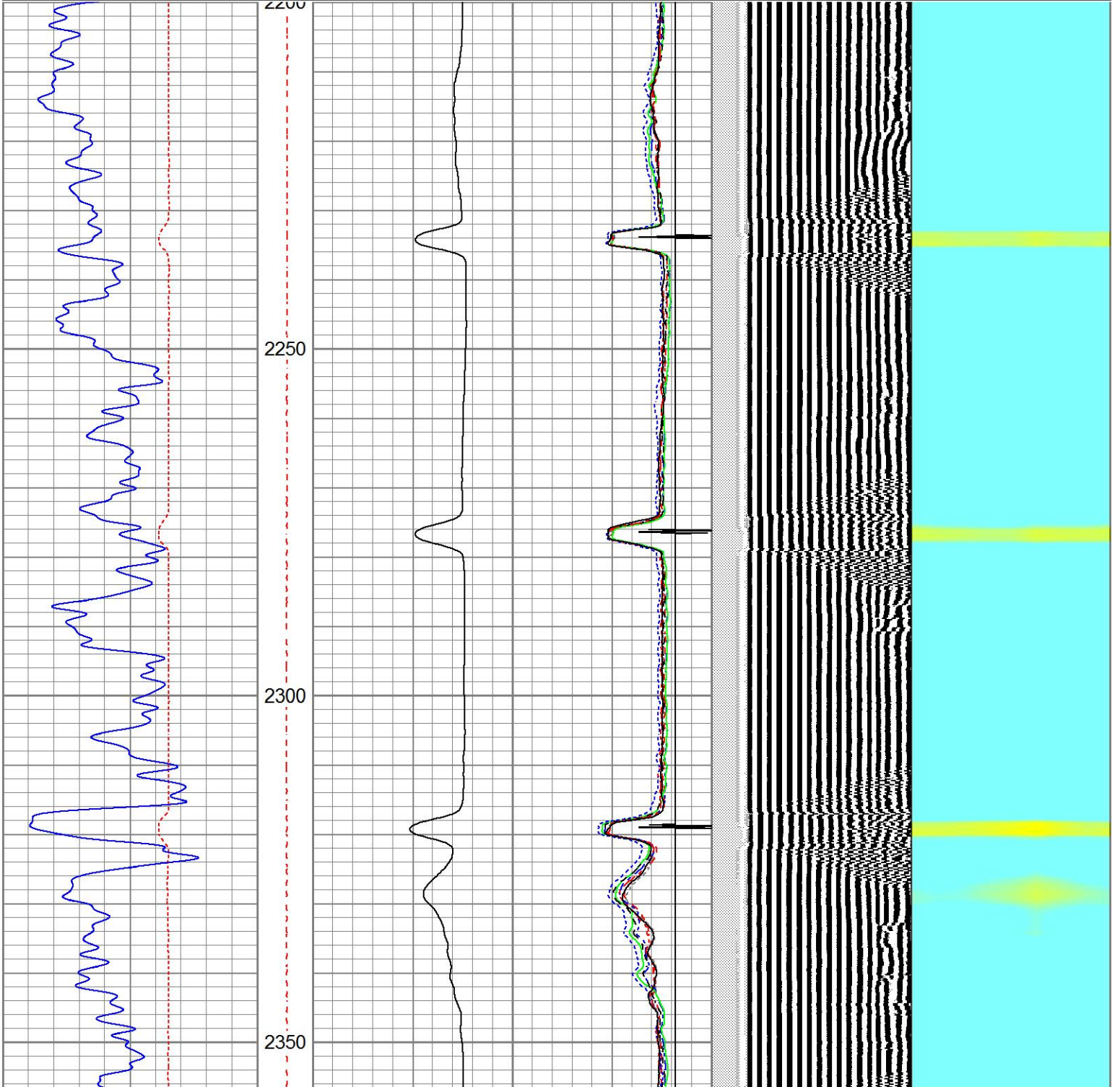
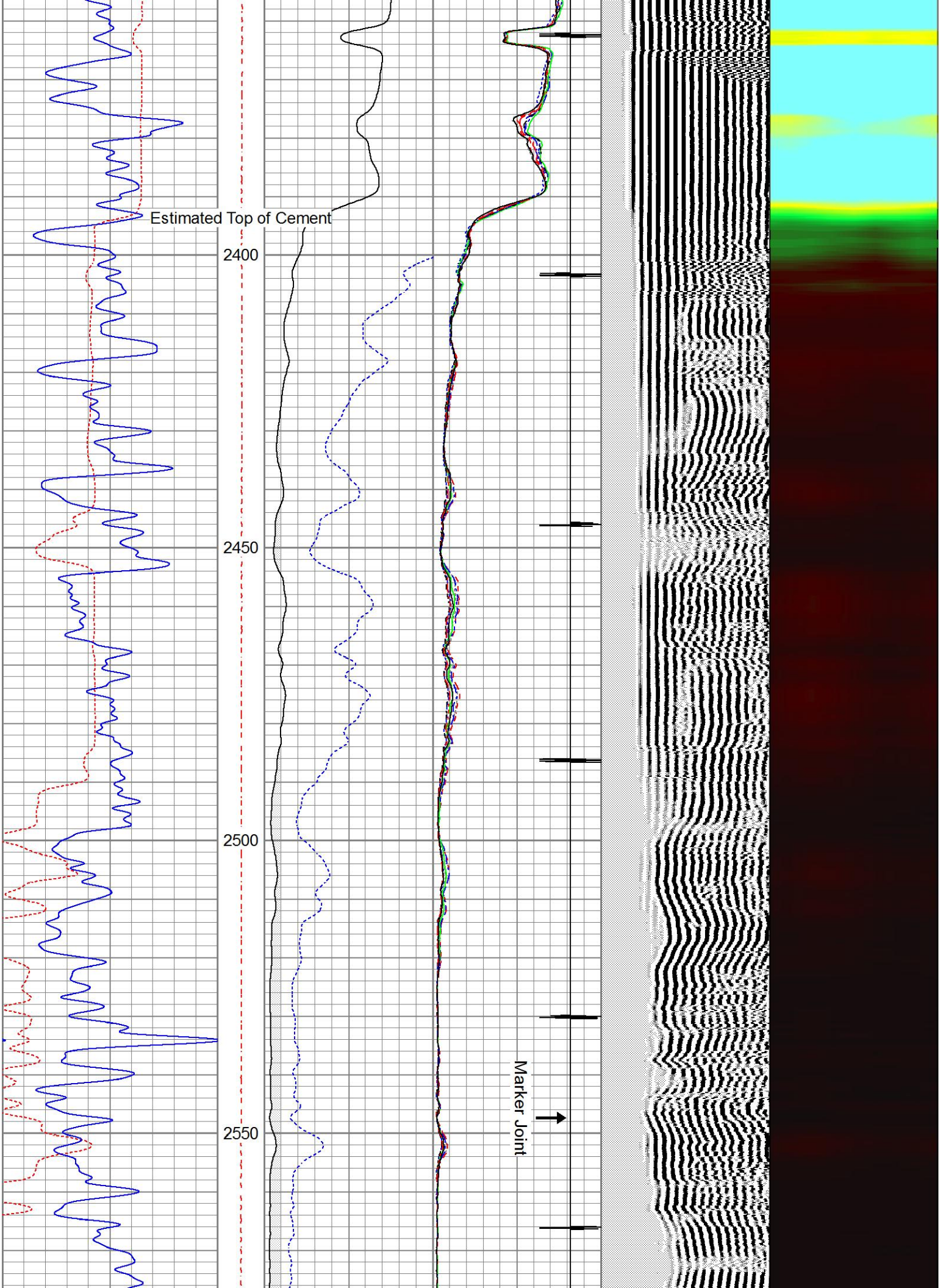
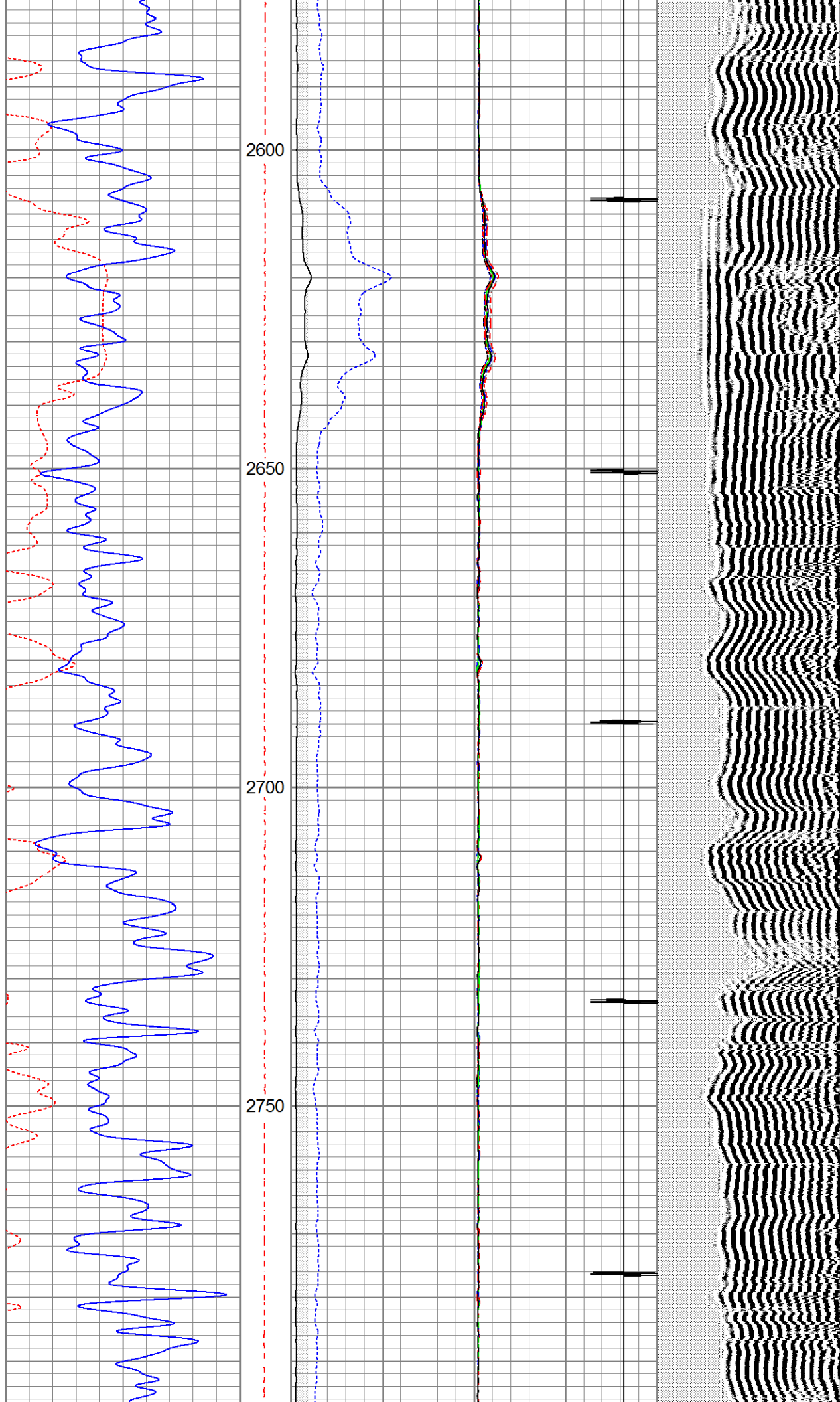


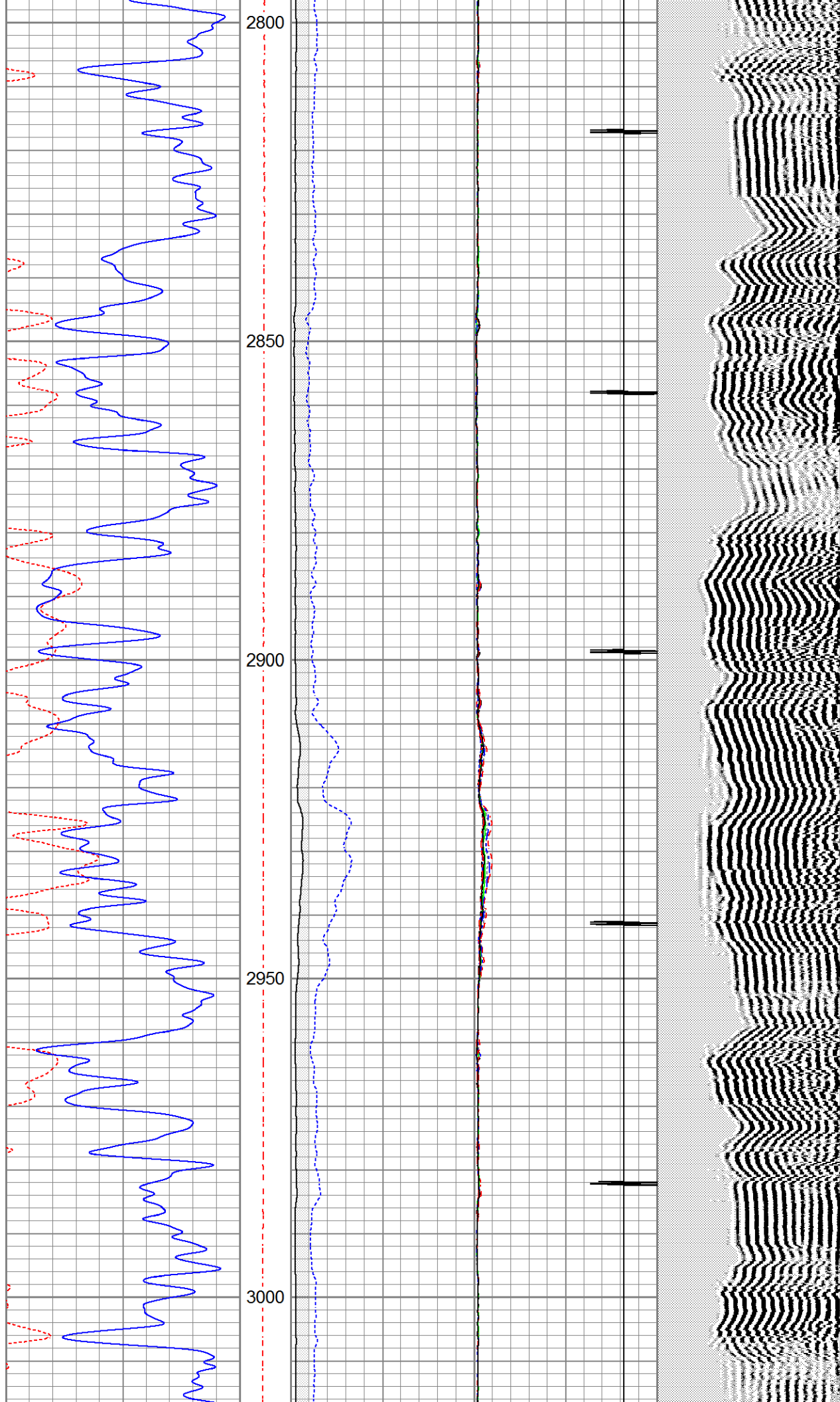
Database File pefrankcerow#8cbl.db
 Dataset Pathname pass4.1
 Presentation Format kssectorco
 Dataset Creation Tue Apr 16 15:49:06 2024
 Charted by Depth in Feet scaled 1:240

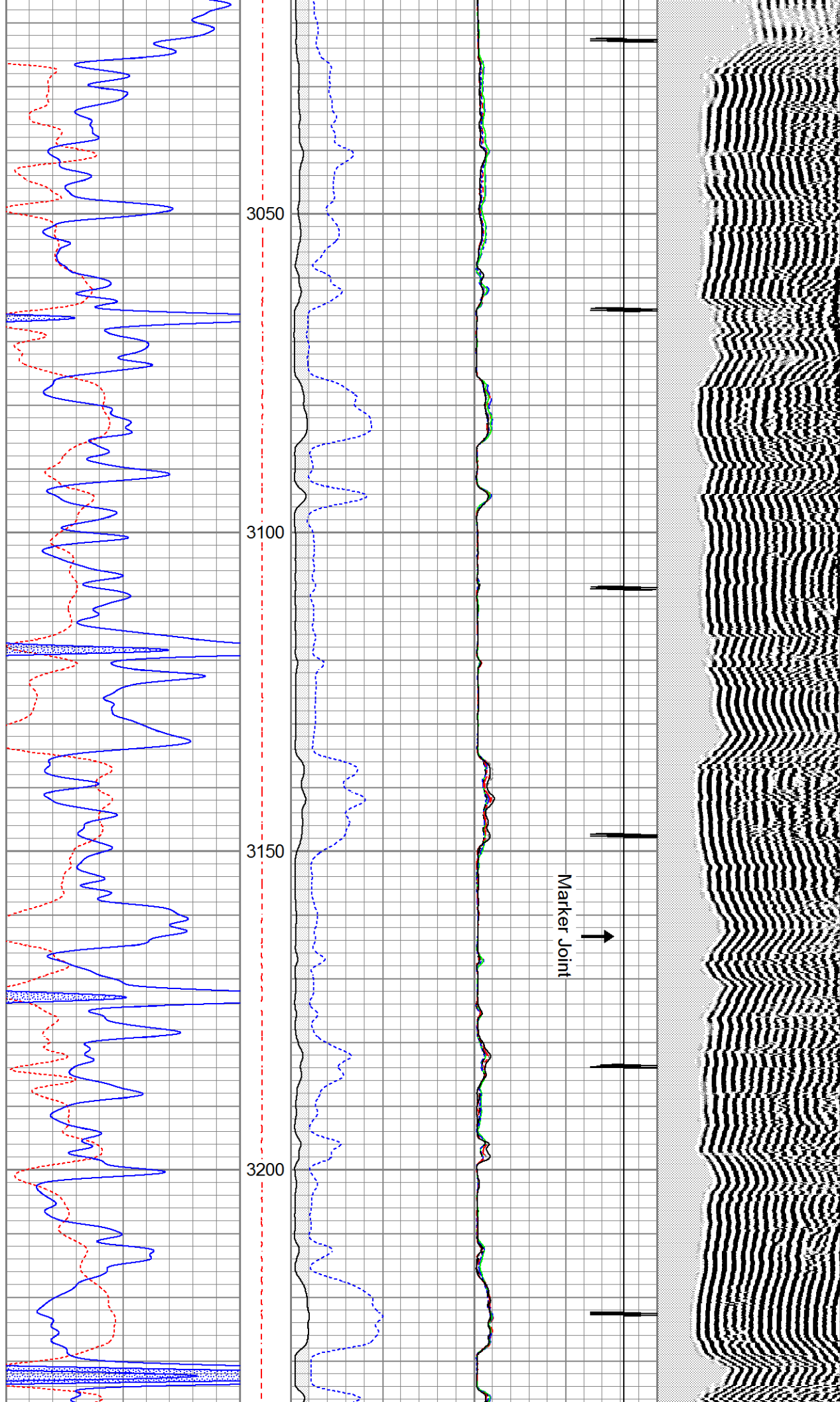
| | | | | | | | | | | | | | | | |
|-----|-----------|-----|-------|------|-------------|---------------------|---|-------|-------|-----|------------|------|---|------------|---|
| 400 | TT (usec) | 200 | LTEN | 0 | AMP3FT (mV) | 100 | 0 | AMPS2 | 100 | 200 | VDL (usec) | 1200 | 1 | Cement Map | 8 |
| 0 | GR (GAPI) | 150 | | (lb) | | Amplified Amplitude | | 0 | AMPS3 | 100 | | | | | |
| | | | 1-100 | 0 | (mV) | 20 | 0 | AMPS4 | 100 | | | | | | |
| | | | | | | | 0 | AMPS5 | 100 | | | | | | |
| | | | | | | | 0 | AMPS6 | 100 | | | | | | |
| | | | | | | | 0 | AMPS7 | 100 | | | | | | |
| | | | | | | | 0 | AMPS8 | 100 | | | | | | |
| | | | | | | | 0 | AMPS1 | 100 | | | | | | |
| | | | | | | | 9 | CCL | -2 | | | | | | |

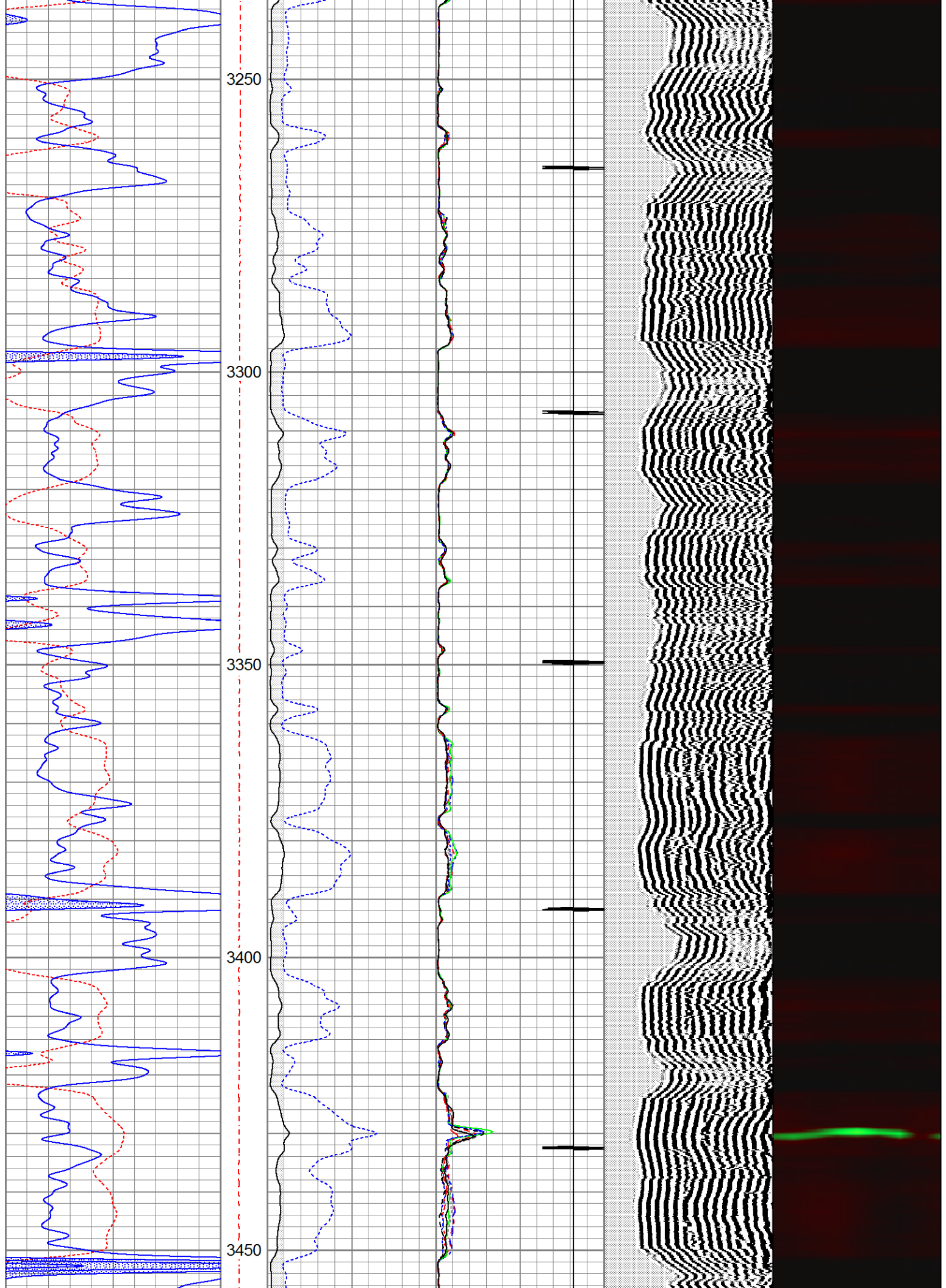


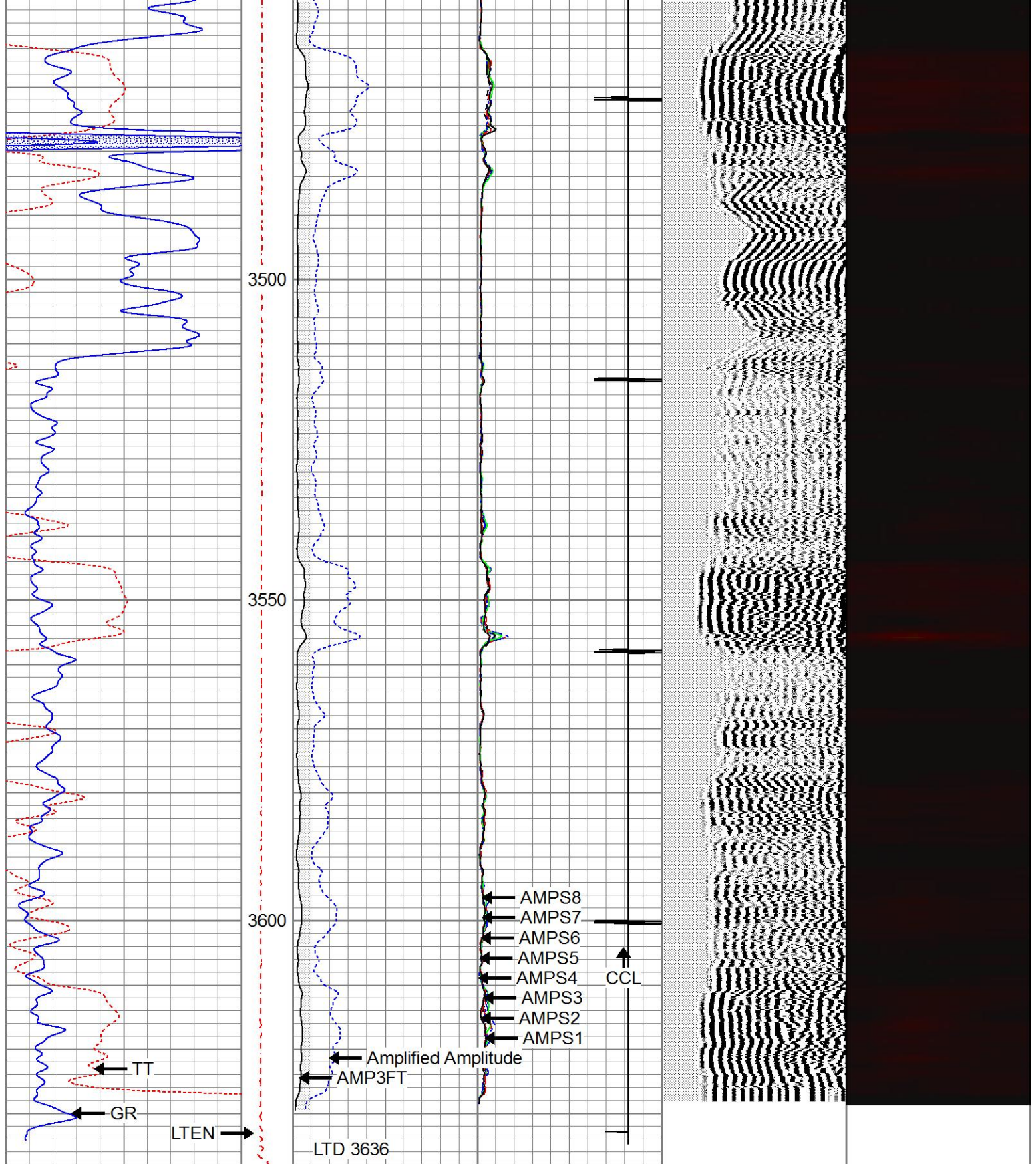












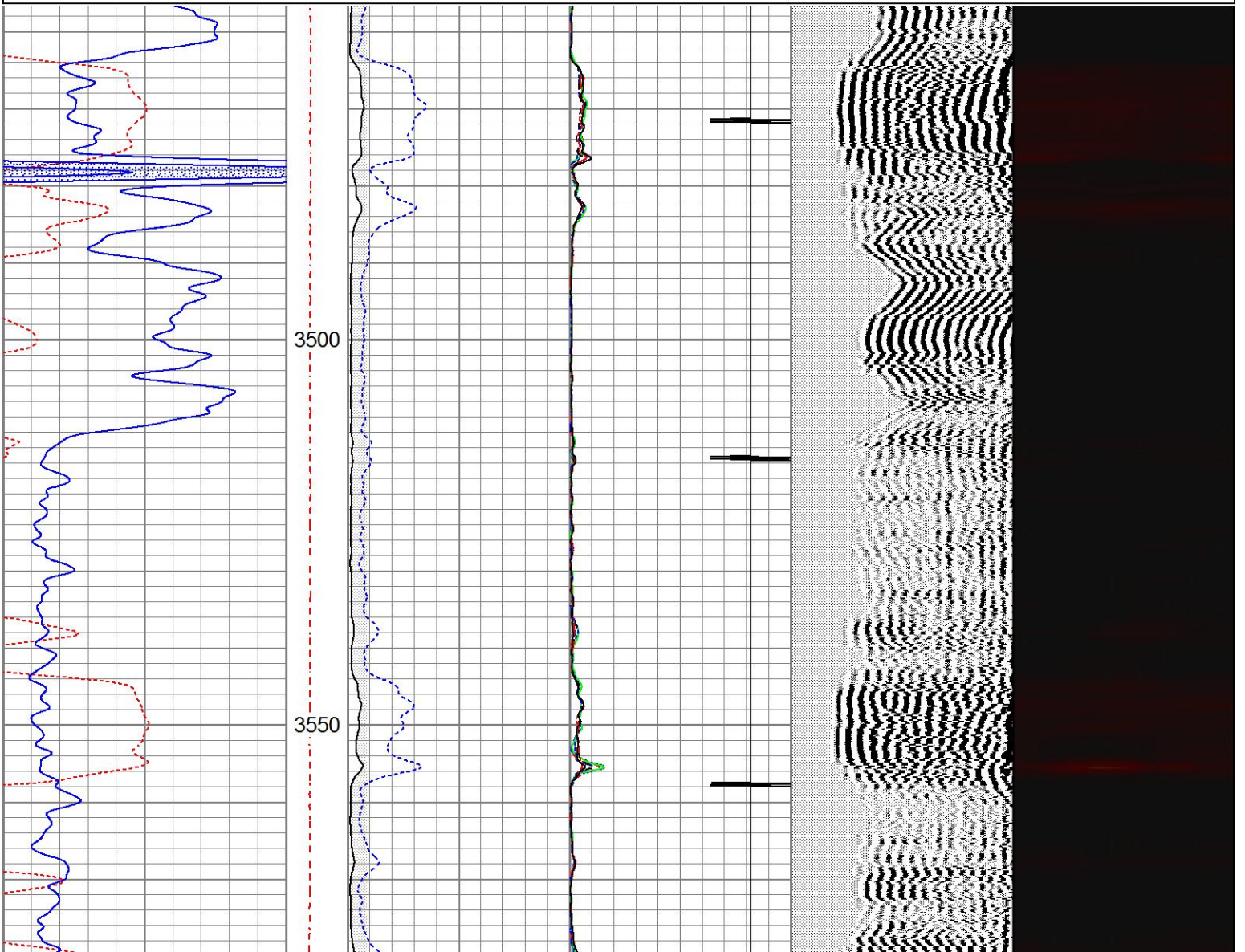
| | | | | | | | | | | | | | | | |
|-----|-----------|-----|-------|---|---------------------|-----|---|-------|-----|-----|------------|------|---|------------|---|
| 400 | TT (usec) | 200 | LTEN | 0 | AMP3FT (mV) | 100 | 0 | AMPS2 | 100 | 200 | VDL (usec) | 1200 | 1 | Cement Map | 8 |
| 0 | GR (GAPI) | 150 | (lb) | 0 | Amplified Amplitude | | 0 | AMPS3 | 100 | | | | | | |
| | | | 1-100 | 0 | (mV) | 20 | 0 | AMPS4 | 100 | | | | | | |
| | | | | | | | 0 | AMPS5 | 100 | | | | | | |
| | | | | | | | 0 | AMPS6 | 100 | | | | | | |
| | | | | | | | 0 | AMPS7 | 100 | | | | | | |
| | | | | | | | 0 | AMPS8 | 100 | | | | | | |
| | | | | | | | 0 | AMPS1 | 100 | | | | | | |

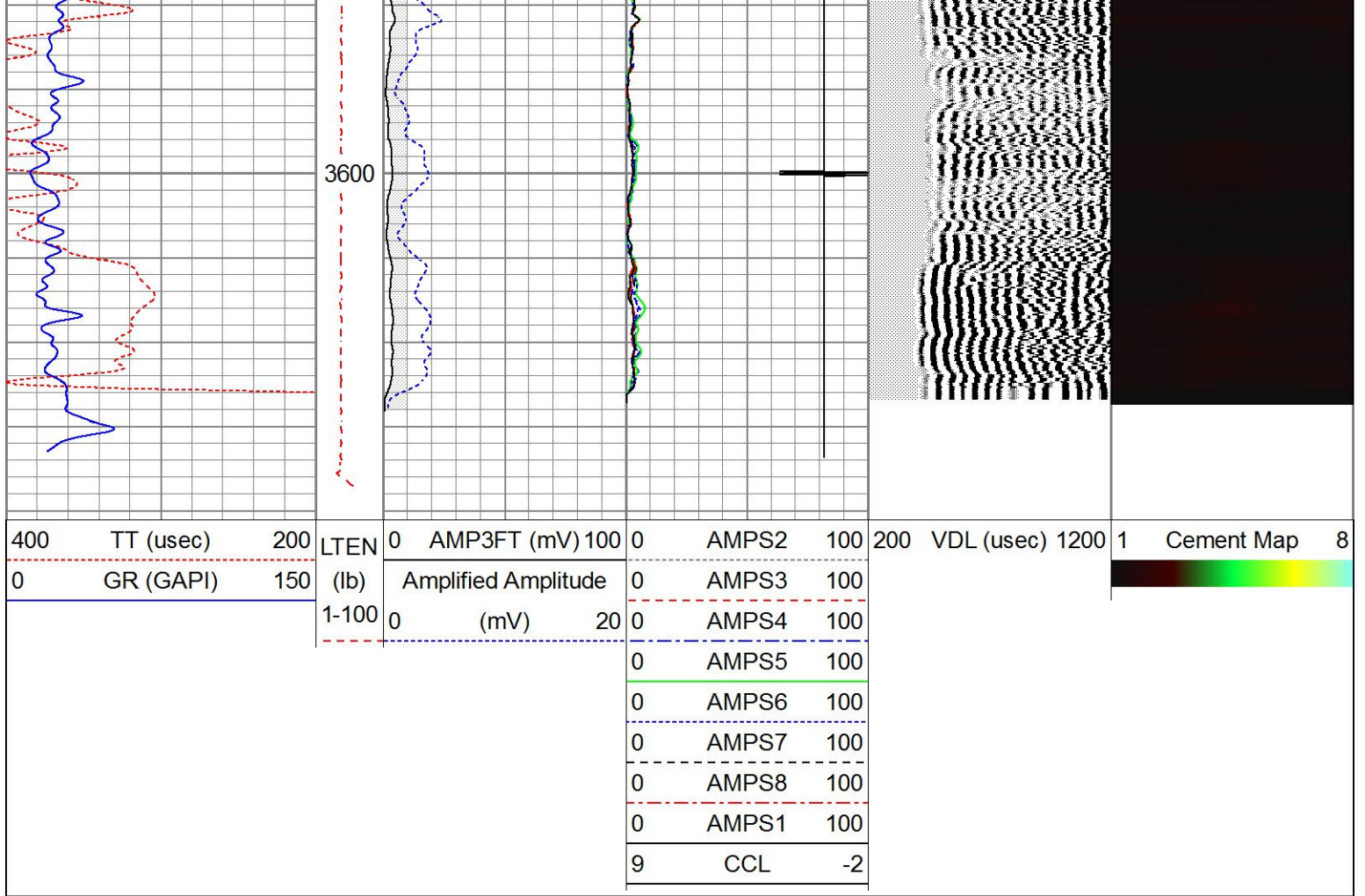


REPEAT SECTION

Database File pefrankcerow#8cbl.db
 Dataset Pathname pass3
 Presentation Format kssectorco
 Dataset Creation Tue Apr 16 15:10:16 2024
 Charted by Depth in Feet scaled 1:240

| | | | | | | | | | | | | | | | |
|-----|-----------|-----|-------|---|---------------------|-----|---|-------|-----|-----|------------|------|---|------------|---|
| 400 | TT (usec) | 200 | LTEN | 0 | AMP3FT (mV) | 100 | 0 | AMPS2 | 100 | 200 | VDL (usec) | 1200 | 1 | Cement Map | 8 |
| 0 | GR (GAPI) | 150 | (lb) | | Amplified Amplitude | | 0 | AMPS3 | 100 | | | | | | |
| | | | 1-100 | 0 | (mV) | 20 | 0 | AMPS4 | 100 | | | | | | |
| | | | | | | | 0 | AMPS5 | 100 | | | | | | |
| | | | | | | | 0 | AMPS6 | 100 | | | | | | |
| | | | | | | | 0 | AMPS7 | 100 | | | | | | |
| | | | | | | | 0 | AMPS8 | 100 | | | | | | |
| | | | | | | | 0 | AMPS1 | 100 | | | | | | |
| | | | | | | | 9 | CCL | -2 | | | | | | |





Calibration Report

Database File pefrankcerow#8cbl.db
 Dataset Pathname pass3
 Dataset Creation Tue Apr 16 15:10:16 2024

Gamma Ray Calibration Report

Serial Number: 080224
 Tool Model: Probe1
 Performed: Wed Mar 8 08:45:31 2023

Calibrator Value: 200.0 GAPI

Background Reading: 15.0 cps
 Calibrator Reading: 222.7 cps

Sensitivity: 1.4000 GAPI/cps

Segmented Cement Bond Log Calibration Report

Serial Number: 100424
 Tool Model: RBL-D

Calibration Casing Diameter: 5.500 in
 Calibration Depth: 1672.250 ft

Master Calibration, performed Tue Apr 16 15:01:49 2024:

| Raw (v) | | Calibrated (mv) | | Results | |
|---------|-----|-----------------|-----|---------|--------|
| Zero | Cal | Zero | Cal | Gain | Offset |
| | | | | | |

| | | | | | | |
|-----|-------|-------|-------|--------|---------|--------|
| 3' | 0.003 | 0.725 | 0.700 | 71.921 | 98.666 | 0.375 |
| CAL | 0.003 | 0.812 | | | | |
| 5' | 0.002 | 0.694 | 0.700 | 71.921 | 102.960 | 0.488 |
| SUM | | | | | | |
| S1 | 0.002 | 0.773 | 0.000 | 71.921 | 93.353 | -0.214 |
| S2 | 0.003 | 0.776 | 0.000 | 71.921 | 93.058 | -0.311 |
| S3 | 0.002 | 0.736 | 0.000 | 71.921 | 97.999 | -0.232 |
| S4 | 0.004 | 0.698 | 0.000 | 71.921 | 103.646 | -0.381 |
| S5 | 0.003 | 0.678 | 0.000 | 71.921 | 106.500 | -0.274 |
| S6 | 0.003 | 0.650 | 0.000 | 71.921 | 111.119 | -0.343 |
| S7 | 0.003 | 0.671 | 0.000 | 71.921 | 107.551 | -0.298 |
| S8 | 0.003 | 0.725 | 0.000 | 71.921 | 99.577 | -0.260 |

Air Zero Calibration, performed Tue Apr 16 14:52:05 2024:

| | Raw (v) | Calibrated (v) | Results |
|-----|-------------|----------------|---------------|
| | <u>Zero</u> | <u>Zero</u> | <u>Offset</u> |
| 3' | 0.000 | 0.000 | 0.000 |
| 5' | 0.000 | 0.000 | 0.000 |
| SUM | | | |
| S1 | 0.000 | 0.000 | 0.000 |
| S2 | 0.000 | 0.000 | 0.000 |
| S3 | 0.000 | 0.000 | 0.000 |
| S4 | 0.000 | 0.000 | 0.000 |
| S5 | 0.000 | 0.000 | 0.000 |
| S6 | 0.000 | 0.000 | 0.000 |
| S7 | 0.000 | 0.000 | 0.000 |
| S8 | 0.000 | 0.000 | 0.000 |