



**MIDWEST SURVEYS**  
 LOGGING - PERFORATING - CONSULTING SERVICES  
 P.O. Box 68, Osawatomie, KS 66064  
 913.755.2128

**GAMMA RAY / NEUTRON / CCL**

File No.

Company **JV Oil, LLC**

Well **Adelgren No.1-H**

Field **Buffalo - Vias**

County **Wilson** State **Kansas**

Location **700' FNL & 2400' FWL**

Other Services **NE-SE-NE-NW**

Sec. 36 Typ. 27s Rge. 16e

Permament Datum **GL** Elevation **1045'**

Log Measured From **GL** K.B. NA

Drilling Measured From **GL** D.F. NA

Date **04-04-2024** Elevation **GL, 1045'**

Run Number **One**

Depth Logger **990.0**

Bottom Logged Interval **877.3**

Top Log Interval **876.3**

Fluid Level **20.0**

Fluid Level **Full**

Type Fluid **Water**

Density / Viscosity **NA**

Salinity - PPM Cl **NA**

Max. Recorded Temp **NA**

Estimated Cement Top **NA**

Equipment No. **107** Location **Osawatomie**

Recorded By **Steve Winkler**

Witnessed By **Victor Hood**

BORE-HOLE RECORD			
RUN No.	BIT FROM	TO	SIZE
One	9.875"	20.0	7.00"
Two	5.575"	20.0	2.875"

CASING RECORD			
WT	FROM	TO	
15.0	0.0	20.0	
6.5	0.0	886.0	

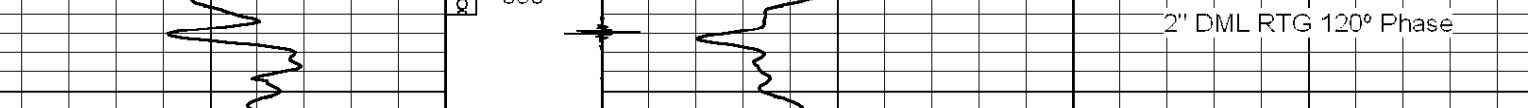
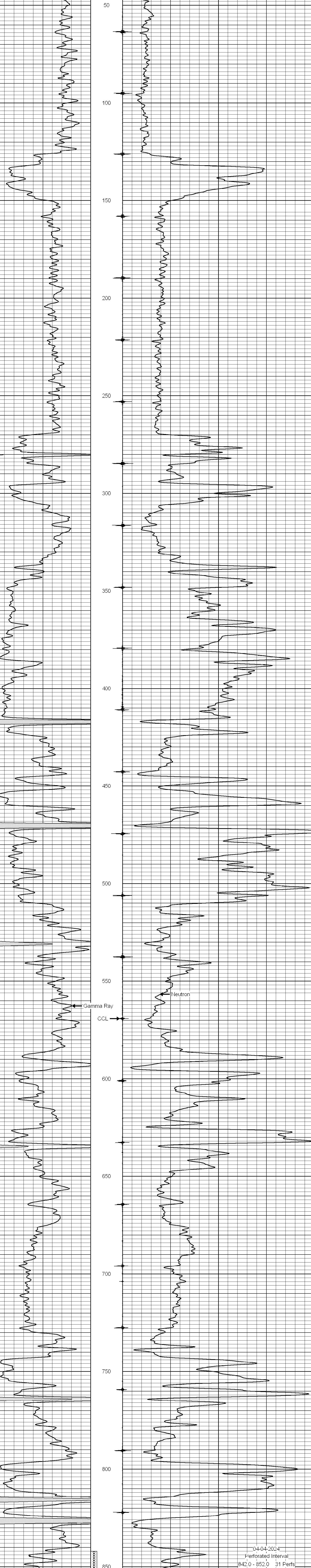
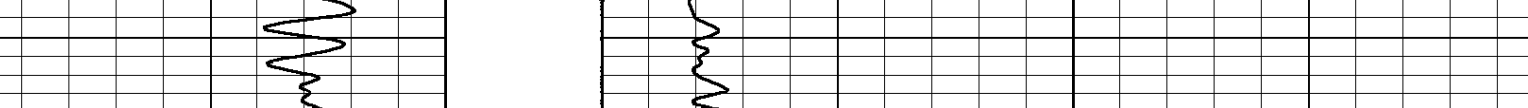
<<< Fold Here >>>

All interpretations are opinions based on inferences from electrical or other measurements and we cannot and do not guarantee the accuracy or correctness of any interpretation, and we shall not, except in the case of gross or willful negligence on our part, be liable or responsible for any loss, costs, damages, or expenses incurred or sustained by anyone resulting from any interpretation made by any of our officers, agents or employees. These interpretations are also subject to our general terms and conditions set out in our current Price Schedule.

Comments

Drilling Contractor :  
JV Oil, LLC

Database File: adelgren 1h.db  
 Dataset Pathname: pass1  
 Presentation Format: gr-n-ccl  
 Dataset Creation: Thu Apr 04 13:00:44 2024 by Log SCH 111116  
 Charted by: Depth in Feet scaled 1:240



04-04-2024  
 Perforated Interval  
 842.0 - 852.0 31 Perfs  
 2' DML RTG 120° Phase