



MIDWEST WIRELINE

DUAL COMPENSATED POROSITY

Company Double G Petro LLC
 Well MJ1 #1
 Field Keough Northeast
 County Rush
 State Kansas

Company Double G Petro LLC
 Well MJ1 #1
 Field Keough Northeast
 County Rush State Kansas

Location: API #: 15-165-22187-00-00
 1410 FSL & 630 FEL
 SEC 14 TWP 16S RGE 20W
 Permanent Datum Ground Level Elevation 2138
 Log Measured From Kelly Bushing
 Drilling Measured From Kelly Bushing
 Other Services
 CNL/CDL
 MEL/BHCS
 K.B. 2146
 D.F.
 G.L. 2138

Date	3/6/2024						
Run Number	One						
Type Log	CNL/CDL						
Depth Driller	3965						
Depth Logger	3965						
Bottom Logged Interval	3944						
Top Logged Interval	3050						
Type Fluid In Hole	Chemical						
Salinity, PPM CL	7700						
Density	9.6						
Level	Full						
Max. Rec. Temp. F	116						
Operating Rig Time	3.5 Hours						
Equipment -- Location	P-24 Hays						
Recorded By	T. Martin						
Witnessed By	Jason Alm						
Borehole Record							
Run No.	Bit	From	To	Size	Wgt.	From	To
One	12.25	00	267	8.625	23	00	267
Two	7.875	267	TD				
Casing Record							

<<< Fold Here >>>

All interpretations are opinions based on inferences from electrical or other measurements and Midwest Wireline Services, LLC cannot and does not guarantee the accuracy or correctness of any interpretation, and Midwest Wireline Services, LLC will not be liable or responsible for any loss, costs, damages, or expenses incurred or sustained by anyone resulting from any interpretation made by any of our officers, agents or employees.

Comments

N/A DENOTES NOT AVAILABLE OR NON-APPLICABLE.

Liebenthal, KS, W on Blktp
 9.5 to Rd 150, 1.3 N, W into

Log Measured From: Kelly Bushing 8 Ft. Above Permanent Datum

THANK YOU FOR USING MIDWEST WIRELINE LLC
 785-625-3858

Your Midwest Wireline Crew		This Log Record Was Witnessed By	
Engineer: T. Martin	Operator:	Primary Witness: Jason Alm	Secondary Witness: Greg Patterson
Operator:	Operator:	Secondary Witness:	Secondary Witness:

Sensor	Offset (ft)	Schematic	Description	Length (ft)	O.D. (in)	Weight (lb)
GR	32.75		GR-M&W (102)	3.00	3.50	50.00
CNLSC CNSSC	29.65 28.90		CNT-M&W (207)	5.00	3.50	100.00
LSD DCAL SSD	20.60 20.58 20.10		CDL-M&W (305-24)	8.50	4.00	250.00
RLL3F RLL3	15.50 15.50		DIL-M&W (501 HT)	18.25	3.50	220.00
CILD	8.33		CILM	4.50		
SP	0.20					

Dataset: double g_mj1 #1.db: field/well/Stack/pass3.1
 Total length: 34.75 ft
 Total weight: 620.00 lb
 O.D.: 4.00 in

Log Variables

DatabaseC:\ProgramData\Warrior\Data\double g_mj1 #1.db
 Dataset field/well/Stack/pass3.1/_vars_

Top - Bottom

BOREID in 7.875	BOTTEMP degF 116	CASEOD in 5.5	CASETHCK in 0	FLUIDDEN g/cc 1	MATRXDEN g/cc 2.71	NPORSEL Limestone	PERFS No
SNDERR mmho/m 0	SNDERRM mmho/m 3	SPSHIFT mV 40	SRFTEMP degF 40	SZCOR Off	TDEPTH ft 3965		

Variable Description

BOREID : Borehole I.D.
 BOTTEMP : Bottom Hole Temperature
 CASEOD : Casing O.D.
 CASETHCK : Casing Thickness
 FLUIDDEN : Fluid Density
 MATRXDEN : Matrix Density
 NPORSEL : Neutron Porosity Curve Select

PERFS : Perforation Flag
 SNDERR : Deep Sonde Error Correction
 SNDERRM : Medium Sonde Error Correction
 SPSHIFT : S.P. Baseline Offset
 SRFTEMP : Surface Temperature
 SZCOR : CN Size Cor. ?
 TDEPTH : Total Depth



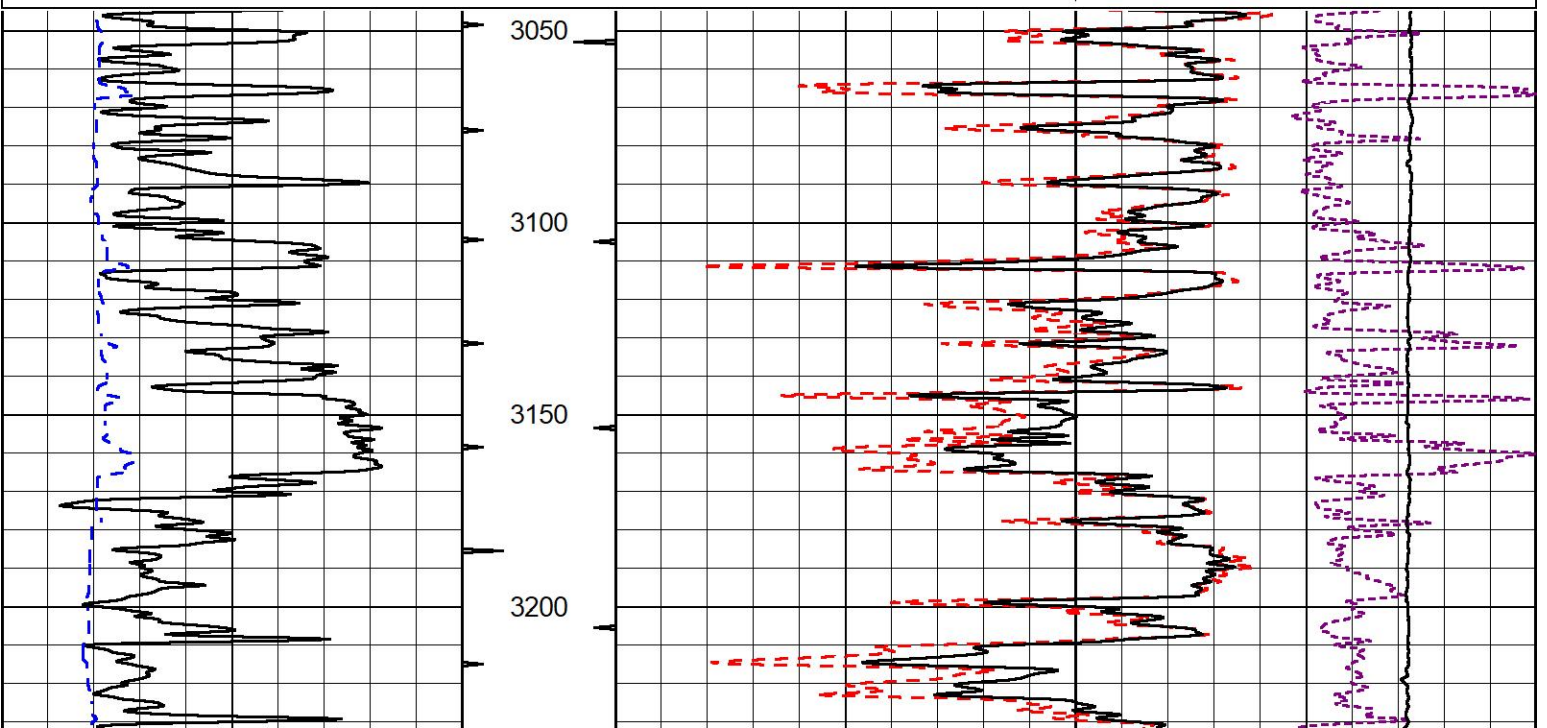
MIDWEST WIRELINE

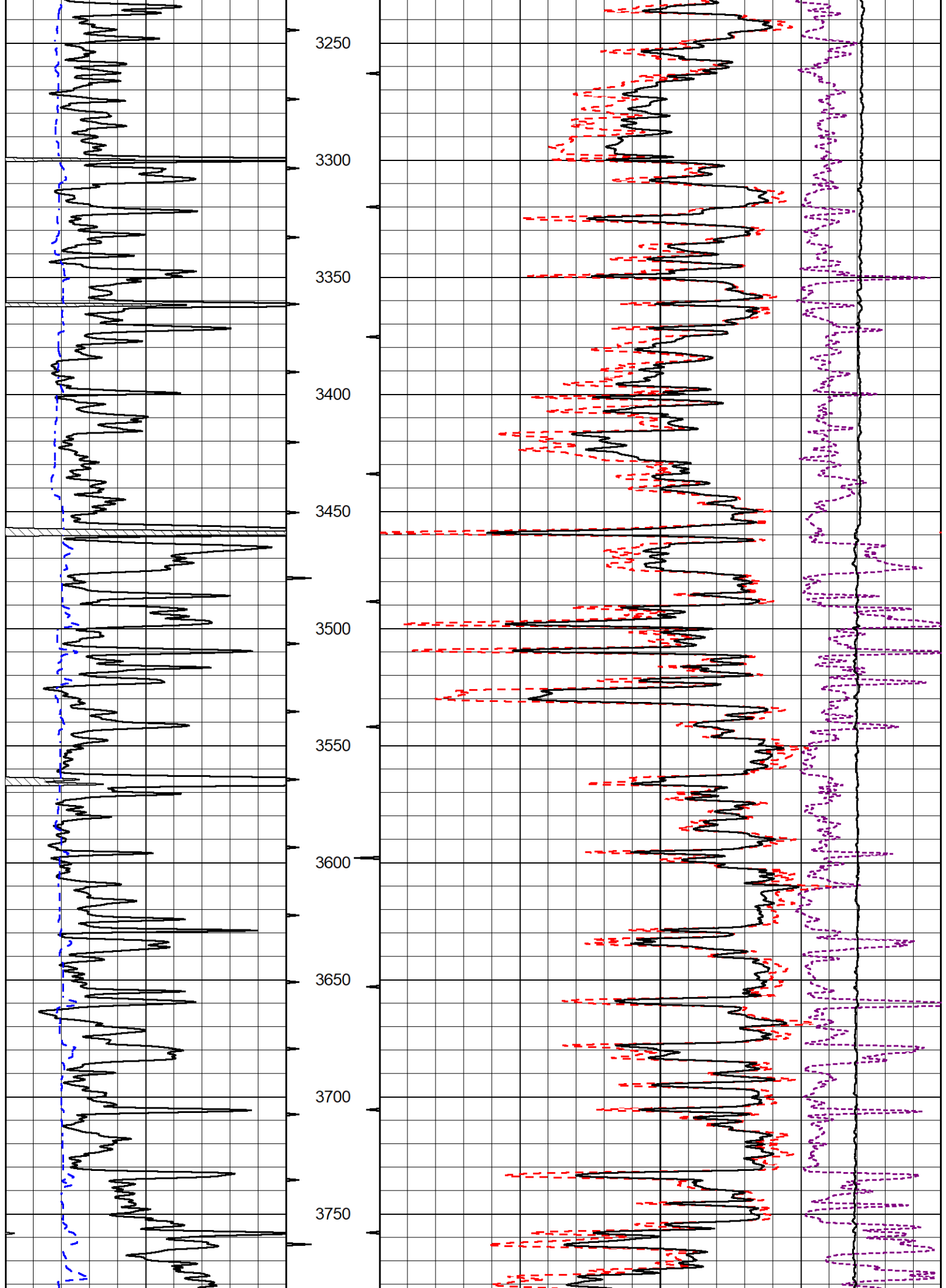
2" SCALE BULK DENSITY

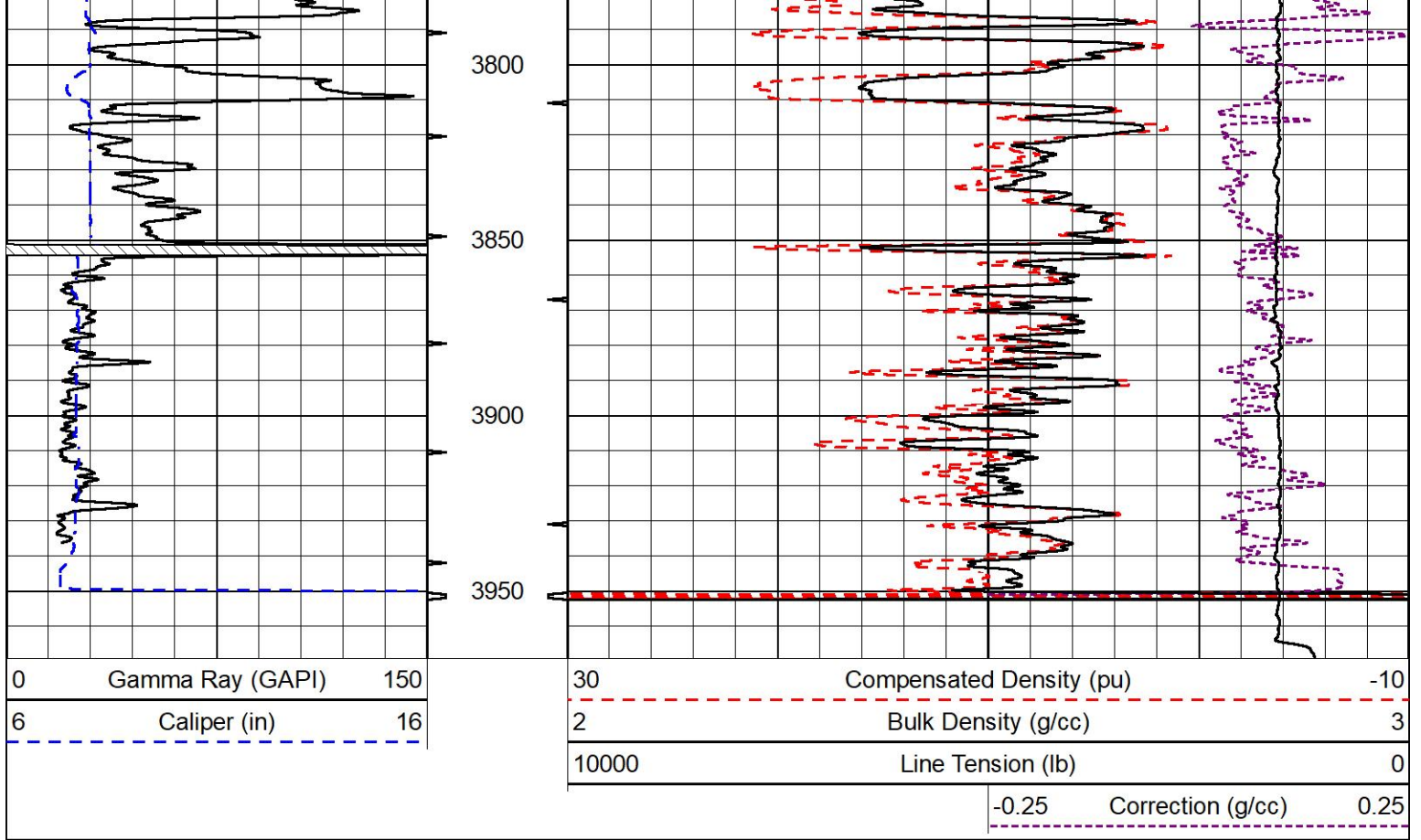
MAIN PASS

Database File double g_mj1 #1.db
 Dataset Pathname Stack/pass3.3
 Presentation Format _cdl
 Dataset Creation Thu Mar 07 00:30:55 2024
 Charted by Depth in Feet scaled 1:600

0	Gamma Ray (GAPI)	150	30	Compensated Density (pu)	-10
6	Caliper (in)	16	2	Bulk Density (g/cc)	3
			10000	Line Tension (lb)	0
				-0.25	Correction (g/cc)
					0.25



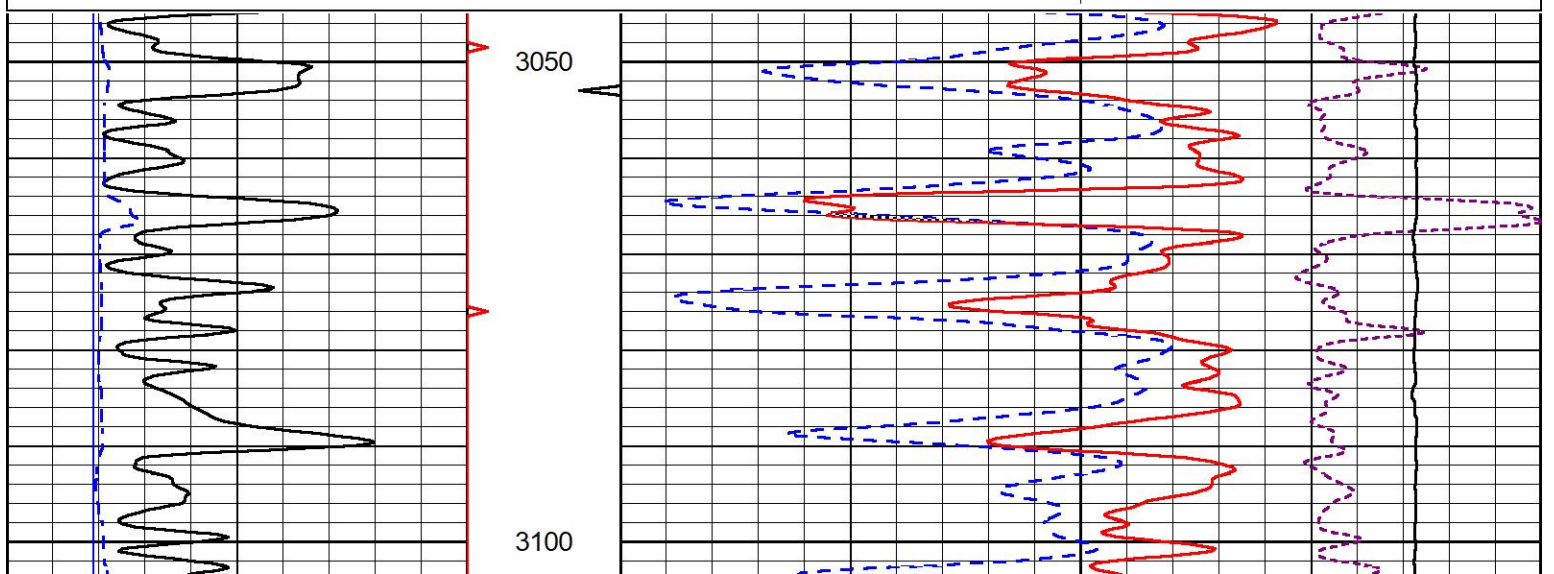
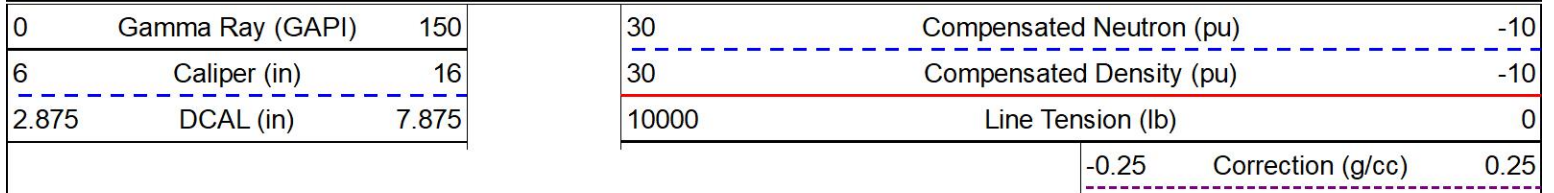


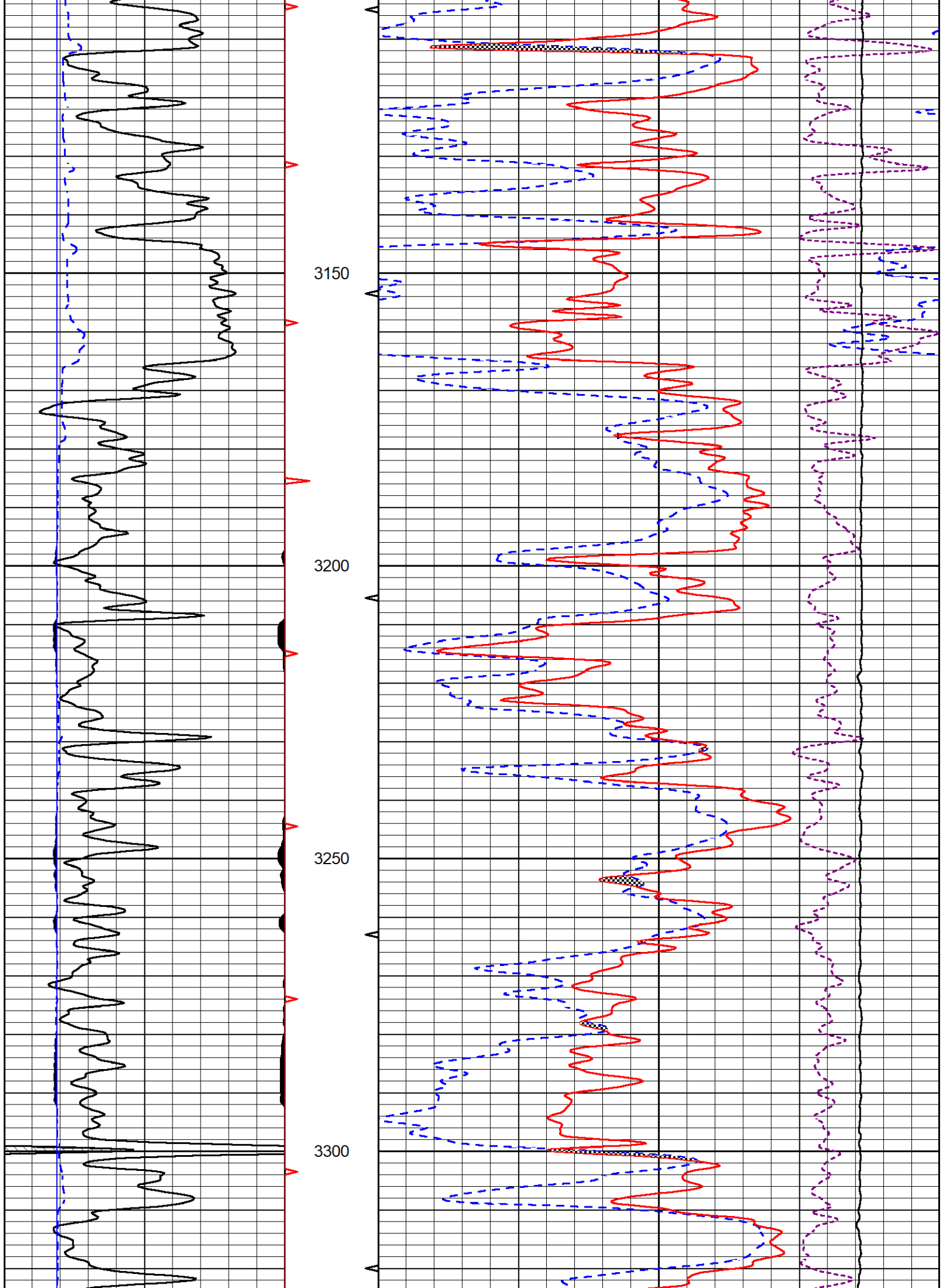


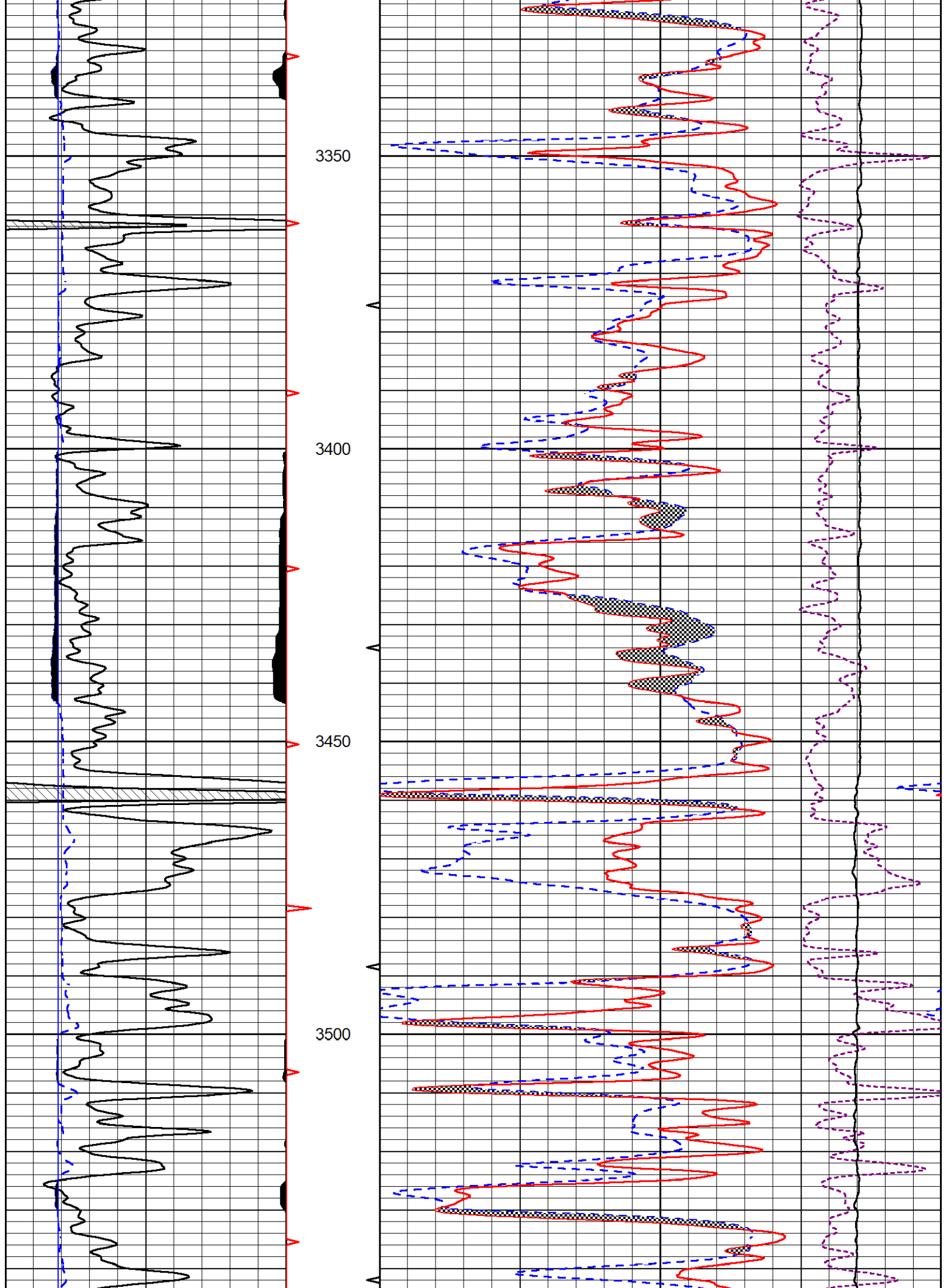
DETAIL SECTION

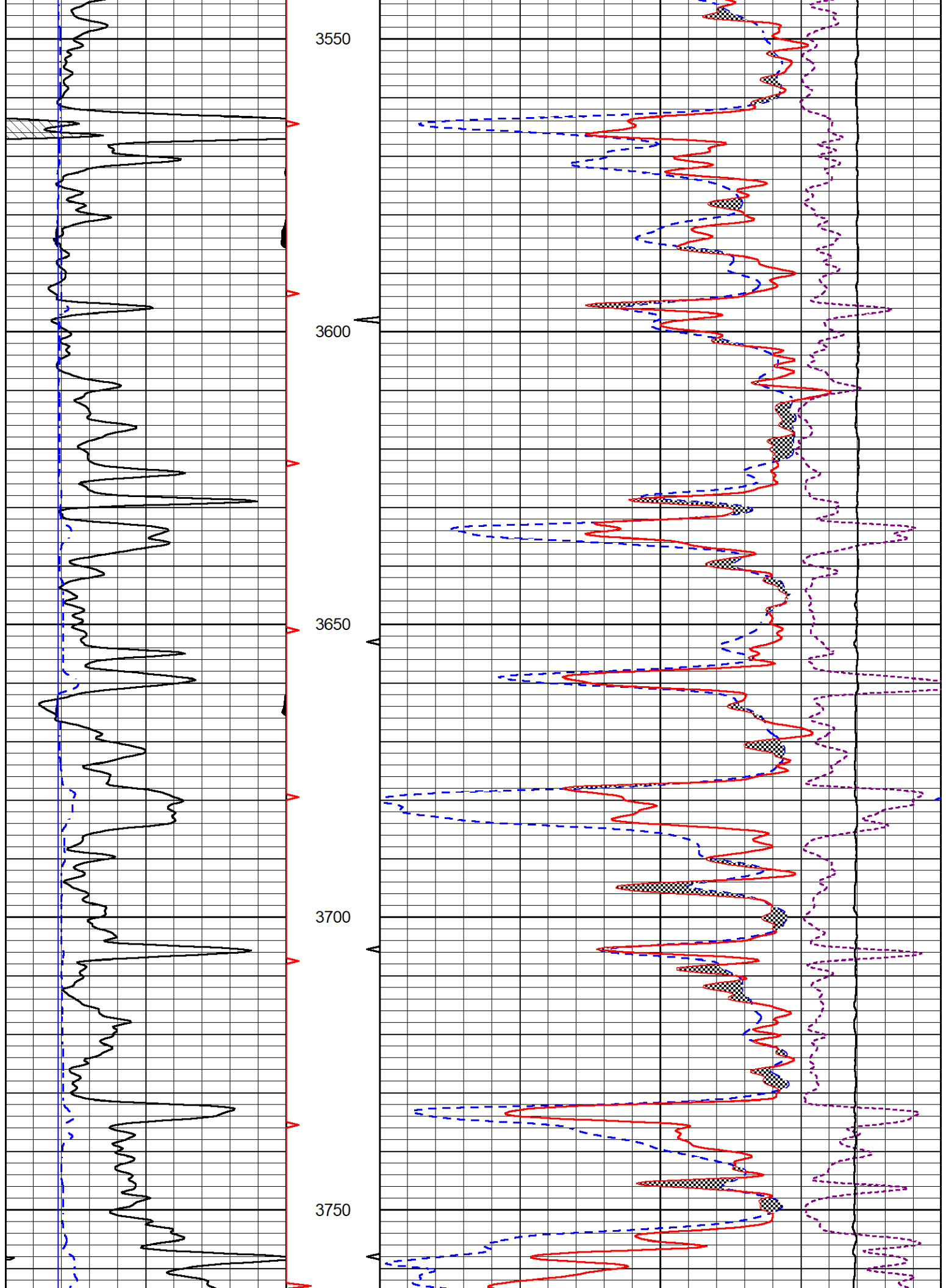
MAIN PASS

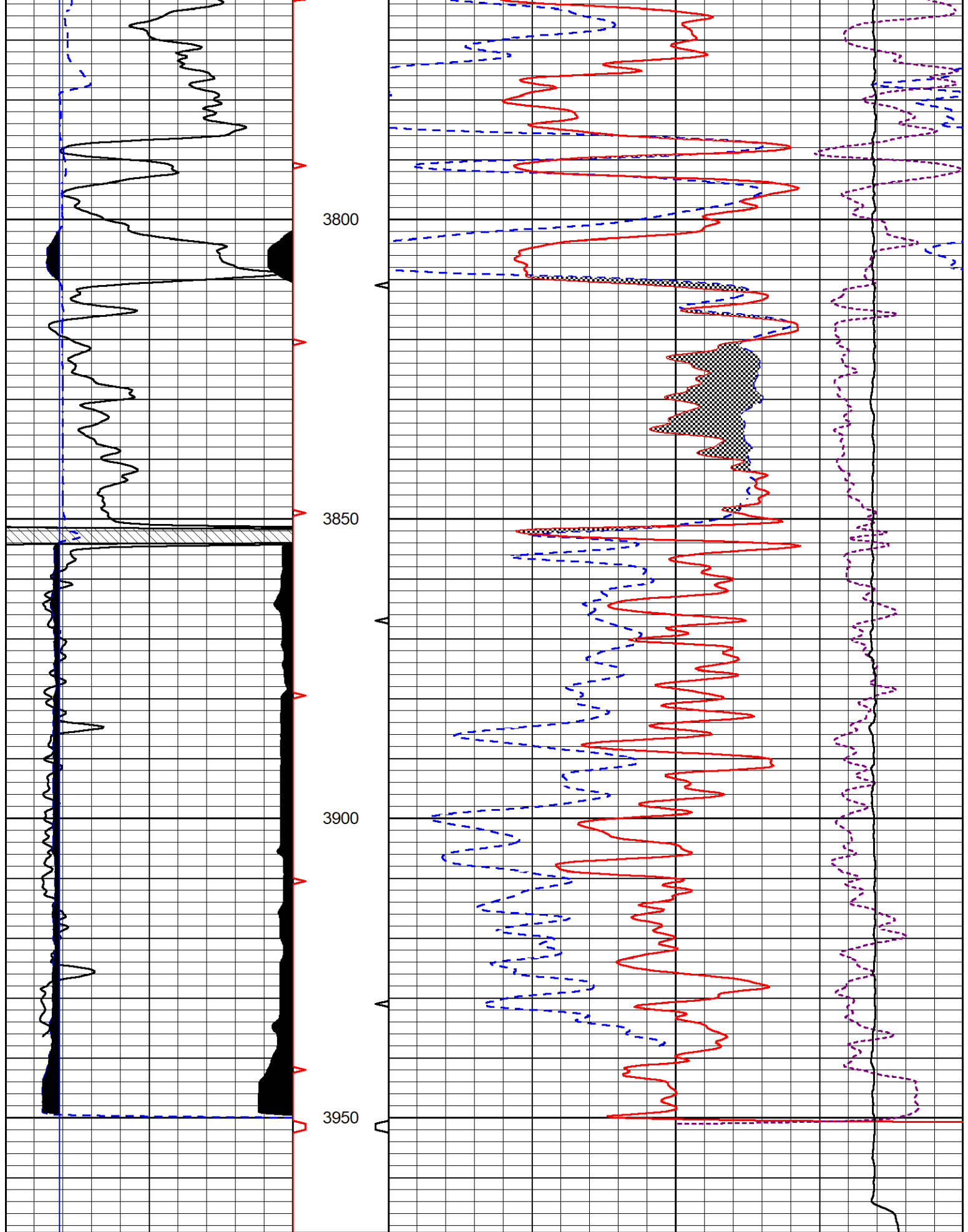
Database File double g_mj1 #1.db
 Dataset Pathname Stack/pass3.1
 Presentation Format _CNDLS~1
 Dataset Creation Thu Mar 07 01:05:05 2024
 Charted by Depth in Feet scaled 1:240











0	Gamma Ray (GAPI)	150
6	Caliper (in)	16
2.875	DCAL (in)	7.875

30	Compensated Neutron (pu)	-10
30	Compensated Density (pu)	-10
10000	Line Tension (lb)	0



MIDWEST WIRELINE

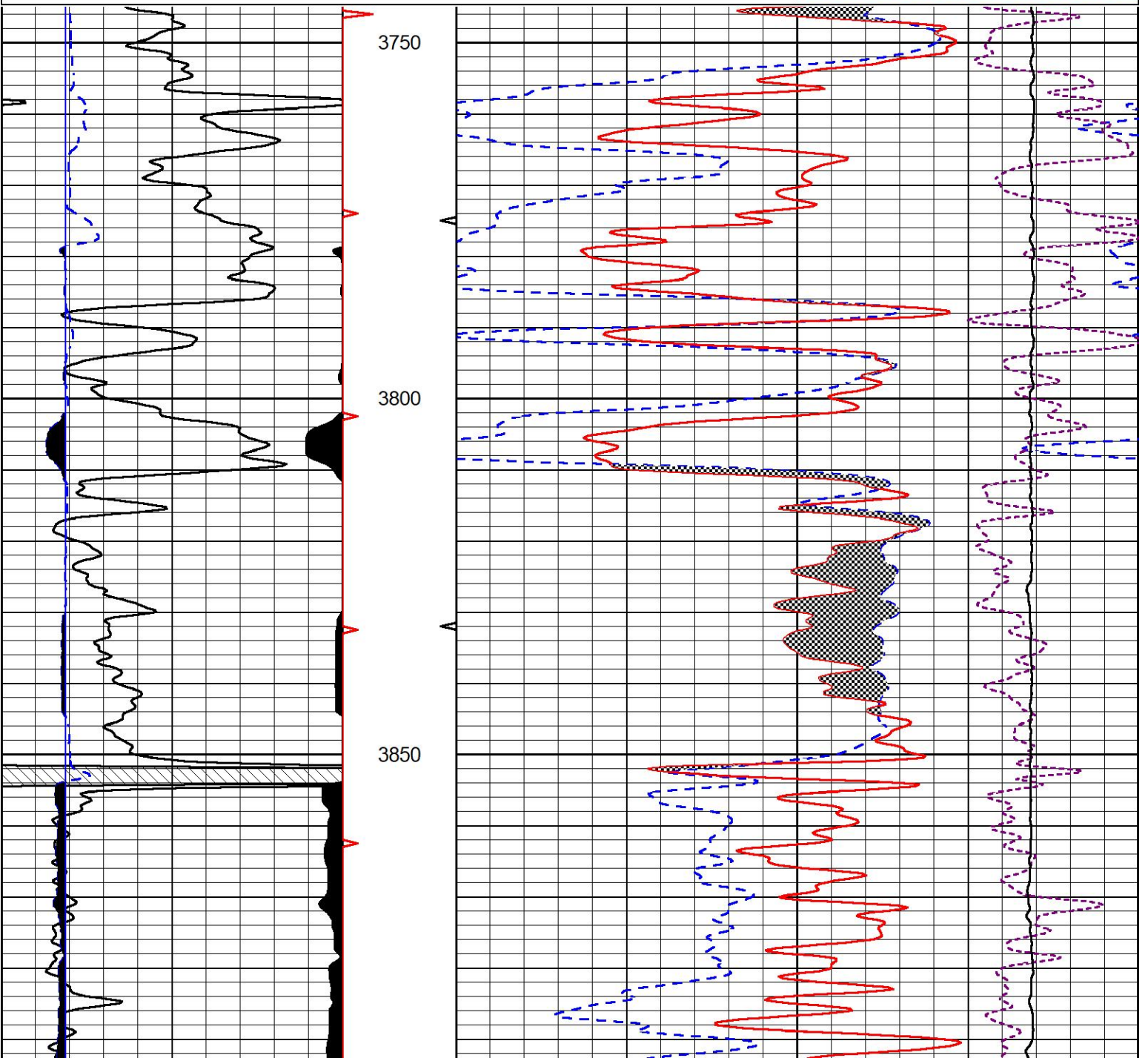
REPEAT SECTION

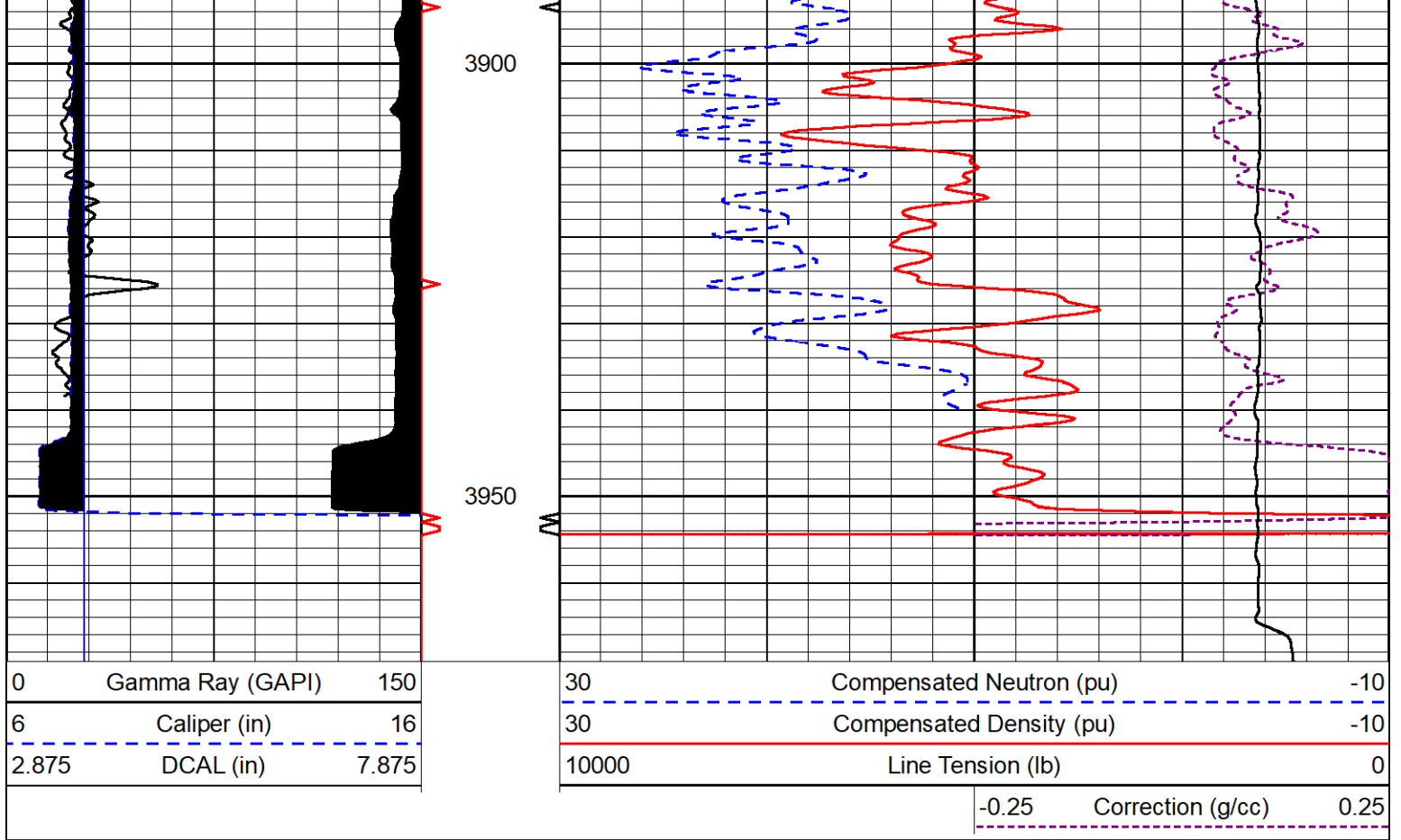
REPEAT PASS

Database File double g_mj1 #1.db
 Dataset Pathname Stack/pass2.1
 Presentation Format _CNDLS~1
 Dataset Creation Thu Mar 07 00:30:23 2024
 Charted by Depth in Feet scaled 1:240

0	Gamma Ray (GAPI)	150
6	Caliper (in)	16
2.875	DCAL (in)	7.875

30	Compensated Neutron (pu)	-10
30	Compensated Density (pu)	-10
10000	Line Tension (lb)	0
-0.25	Correction (g/cc)	0.25





Calibration Report

Database File double_g_mj1 #1.db
 Dataset Pathname Stack/pass3.3
 Dataset Creation Thu Mar 07 00:30:55 2024

Dual Induction Calibration Report

Serial-Model: 501 HT-M&W
 Surface Cal Performed:

Loop:	Readings		References			Results	
	Air	Loop	Air	Loop	mmho/m	m	b
Deep	78.235	390.165	0.000	255.800	mmho/m	0.870	-63.500
Medium	37.526	515.344	0.000	255.800	mmho/m	0.500	-20.000

Compensated Density Calibration Report

Serial-Model: 305-24-M&W
 Source / Verifier: 20762B / 2ci
 Master Calibration Performed: Tue Feb 6 18:43:03 2024
 Before Survey Verification Performed:
 After Survey Verification Performed:

Master Calibration

	Density		Far Detector	Near Detector	
Magnesium	1.680	g/cc	5028.88	5761.57	cps
Aluminum	2.560	g/cc	1122.37	3952.02	cps

Spine Angle = 75.89

Density/Spine Ratio = 0.569

	Size		Reading
Small Ring	4.00	in	1.74
Large Ring	14.00	in	1.38

Compensated Neutron Calibration Report

Serial Number: 207
Tool Model: M&W

CALIBRATION

Detector	Readings	Target	Normalization
Short Space	6240.00 cps	1000.00 cps	1.6025
Long Space	460.00 cps	1000.00 cps	1.9500

PRE-SURVEY VERIFICATION

Detector	Readings	Measured	Target
1) Short Space	cps		
Long Space	cps	pu	pu
2) Short Space	cps		
Long Space	cps	pu	
3) Short Space	cps		
Long Space	cps	pu	

POST-SURVEY VERIFICATION

Detector	Readings	Measured	Target
1) Short Space	cps		
Long Space	cps	pu	pu
2) Short Space	cps		
Long Space	cps	pu	pu
3) Short Space	cps		
Long Space	cps	pu	pu


Gamma Ray Calibration Report

Serial Number: 102
Tool Model: M&W
Performed: Mon Sep 25 22:02:33 2023

Calibrator Value: 1.0 GAPI

Background Reading: 0.0 cps
Calibrator Reading: 1.0 cps

Sensitivity: 0.5250 GAPI/cps

 MIDWEST WIRELINE	Company	Double G Petro LLC
	Well	MJ1 #1
	Field	Keough Northeast
	County	Rush
	State	Kansas