



MIDWEST WIRELINE

**MICRORESISTIVITY**

Company Double G Petro LLC  
 Well MJ1 #1  
 Field Keough Northeast  
 County Rush  
 State Kansas

Company Double G Petro LLC  
 Well MJ1 #1  
 Field Keough Northeast  
 County Rush State Kansas

Location: API #: 15-165-22187-00-00  
 1410 FSL & 630 FEL  
 SEC 14 TWP 16S RGE 20W  
 Permanent Datum Ground Level Elevation 2138  
 Log Measured From Kelly Bushing  
 Drilling Measured From Kelly Bushing  
 Other Services  
 CNL/CDL  
 DIL/BHCS  
 Elevation  
 K.B. 2146  
 D.F.  
 G.L. 2138

Date	3/6/2024
Run Number	Two
Depth Driller	3965
Depth Logger	3965
Bottom Logged Interval	3964
Top Log Interval	3050
Casing Driller	8.625 @ 267
Casing Logger	266
Bit Size	7.875
Type Fluid in Hole	Chemical
Salinity, ppm CL	7700
Density / Viscosity	9.6 63
pH / Fluid Loss	10.5 10.4
Source of Sample	Flowline
Rm @ Meas. Temp	0.75 @ 70
Rmt @ Meas. Temp	0.56 @ 70
Rmc @ Meas. Temp	1.01 @ 70
Source of Rmf / Rmc	Charts
Rm @ BHT	0.45 @ 116
Operating Rig Time	3.5 Hours
Max Rec. Temp. F	116
Equipment Number	P-24
Location	Hays
Recorded By	T. Martin
Witnessed By	Jason Alm
	Greg Patterson

<<< Fold Here >>>

All interpretations are opinions based on inferences from electrical or other measurements and Midwest Wireline LLC cannot and does not guarantee the accuracy or correctness of any interpretation, and Midwest Wireline LLC will not be liable or responsible for any loss, costs, damages, or expenses incurred or sustained by anyone resulting from any interpretation made by any of our officers, agents or employees.

**Comments**

**N/A DENOTES NOT AVAILABLE OR NON-APPLICABLE.**

Liebenthal, KS, W on Blktp  
 9.5 to Rd 150, 1.3 N, W into

Log Measured From: Kelly Bushing 8 Ft. Above Permanent Datum

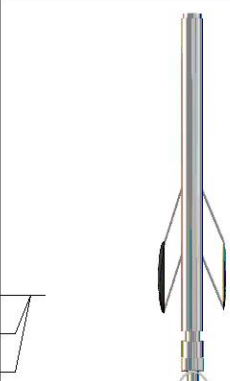
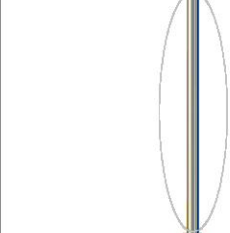
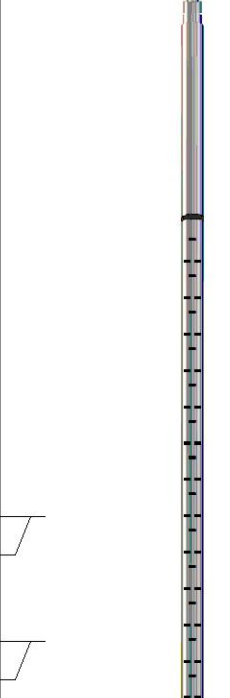
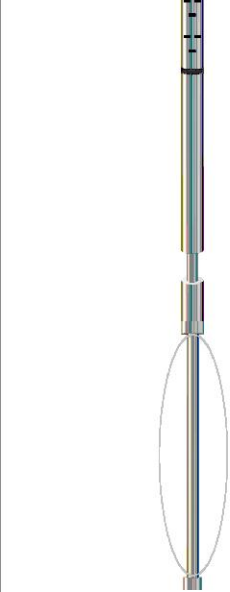
THANK YOU FOR USING MIDWEST WIRELINE LLC  
 785-625-3858

**Your Midwest Wireline Crew**

Engineer: T. Martin  
 Operator:  
 Operator:  
 Operator:

**This Log Record Was Witnessed By**

Primary Witness: Jason Alm  
 Secondary Witness: Greg Patterson  
 Secondary Witness:  
 Secondary Witness:

Sensor	Offset (ft)	Schematic	Description	Length (ft)	O.D. (in)	Weight (lb)
MCAL MI MN	25.50 25.50 25.50		ML-Pengo (Pengo1)	5.50	3.50	100.00
			CENT-PENGO (4-PENGO)	4.25	3.00	70.00
WVF4 WVF1	12.25 12.25		SLT-PENGO (601) 3 1/2 BHC Sonic	16.00	3.50	300.00
WVF3 WVF2	10.25 10.25		CENT-PENGO (3-PENGO)	4.25	3.00	70.00

Dataset: double g\_mj1 #1.db: field/well/SonMel/pass3  
 Total length: 30.00 ft  
 Total weight: 540.00 lb  
 O.D.: 3.50 in

# Log Variables

DatabaseC:\ProgramData\Warrior\Data\double g\_mj1 #1.db  
 Dataset field/well/Stack/pass3.1/\_vars\_

## Top - Bottom

BOREID in 7.875	BOTTEMP degF 116	CASEOD in 5.5	CASETHCK in 0	FLUIDDEN g/cc 1	MATRXDEN g/cc 2.71	NPORSEL Limestone	PERFS No
SNDERR mmho/m 0	SNDERRM mmho/m 3	SPSHIFT mV 40	SRFTEMP degF 40	SZCOR Off	TDEPTH ft 3965		

## Variable Description

BOREID : Borehole I.D.  
 BOTTEMP : Bottom Hole Temperature  
 CASEOD : Casing O.D.  
 CASETHCK : Casing Thickness  
 FLUIDDEN : Fluid Density  
 MATRXDEN : Matrix Density  
 NPORSEL : Neutron Porosity Curve Select

PERFS : Perforation Flag  
 SNDERR : Deep Sonde Error Correction  
 SNDERRM : Medium Sonde Error Correction  
 SPSHIFT : S.P. Baseline Offset  
 SRFTEMP : Surface Temperature  
 SZCOR : CN Size Cor. ?  
 TDEPTH : Total Depth



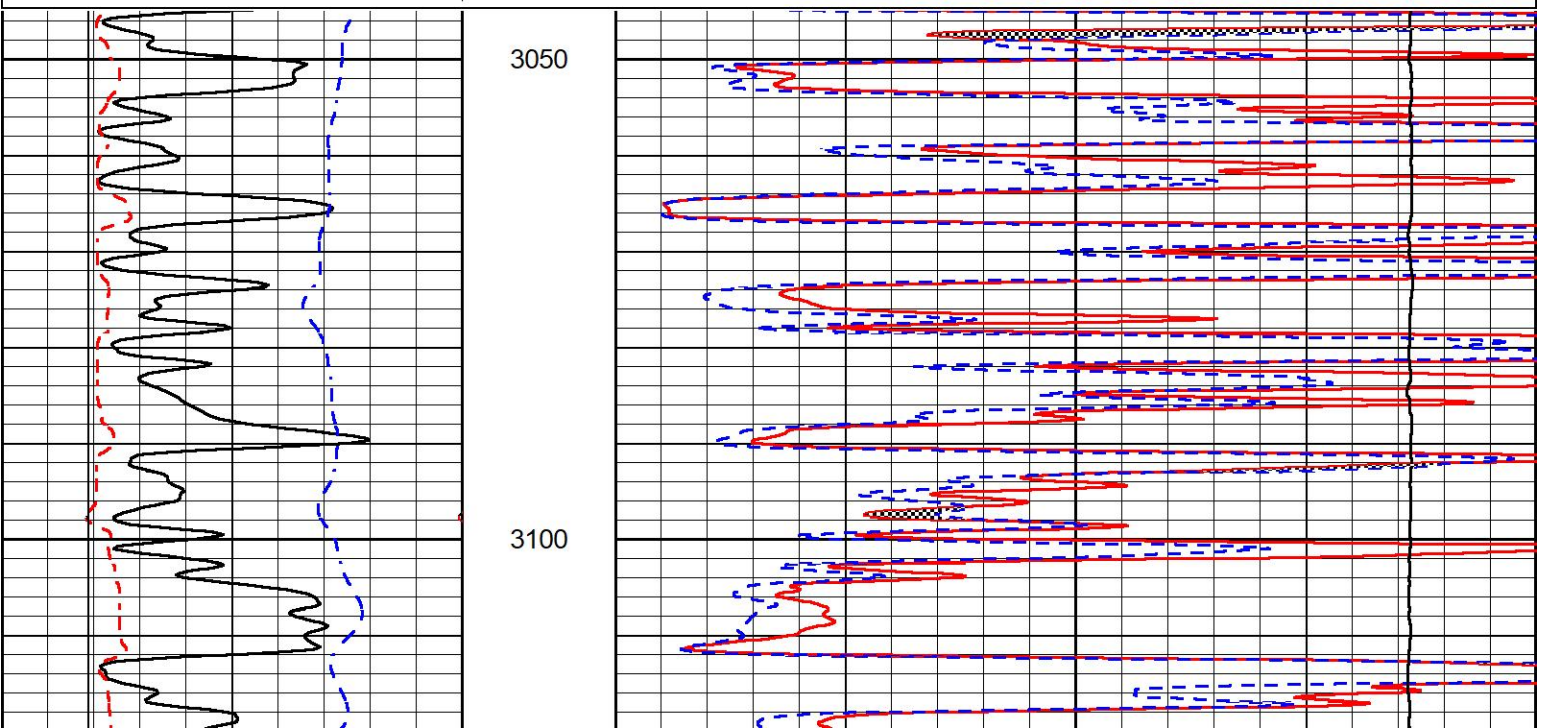
## DETAIL SECTION

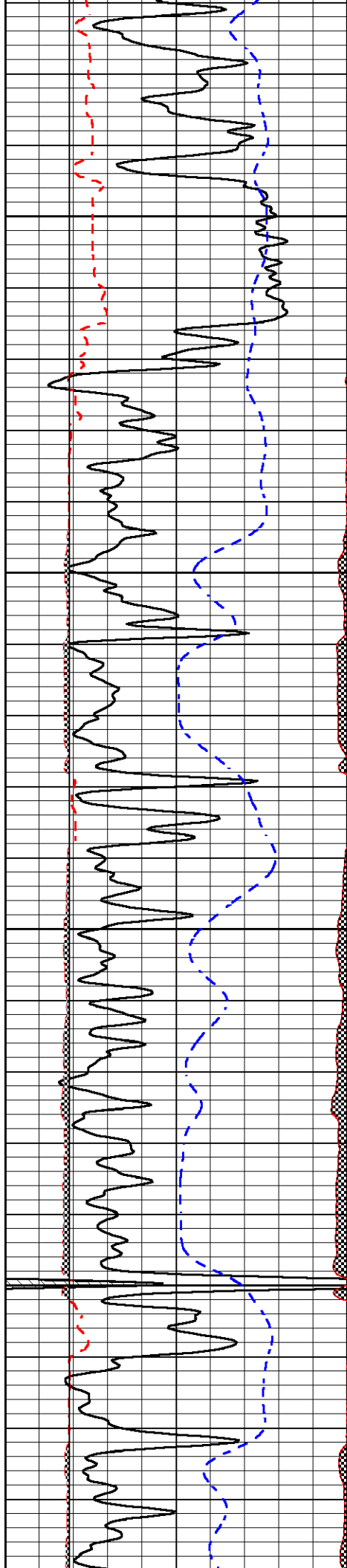
### MAIN PASS

Database File double g\_mj1 #1.db  
 Dataset Pathname Stack/pass3.1  
 Presentation Format \_micro  
 Dataset Creation Thu Mar 07 01:05:05 2024  
 Charted by Depth in Feet scaled 1:240

0	GR (GAPI)	150
6	Caliper (in)	16
2.875	mcal (in)	7.875
-200	sp (mV)	0

0	Micro Inverse 1 X 1 (Ohm-m)	40
0	Micro Normal 2" (Ohm-m)	40
10000	Line Weight (lb)	0



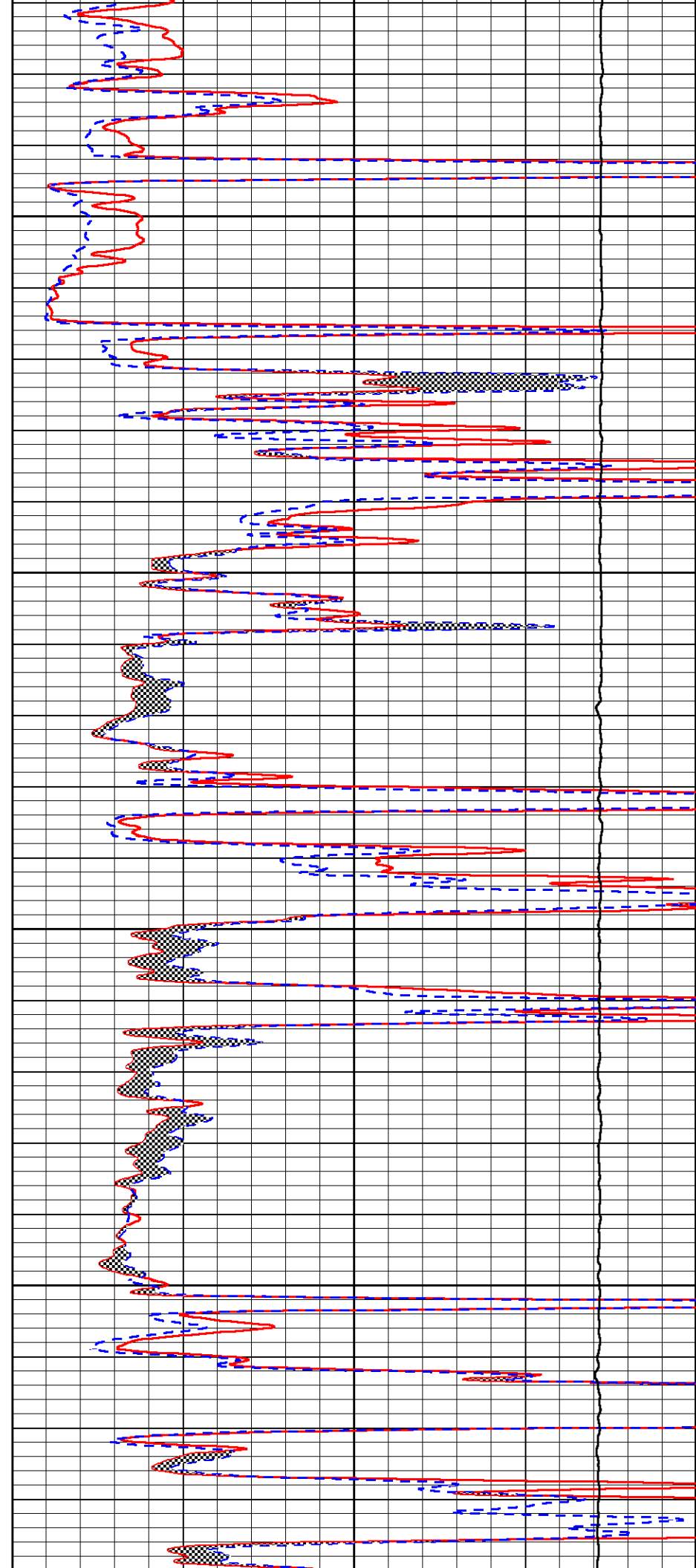


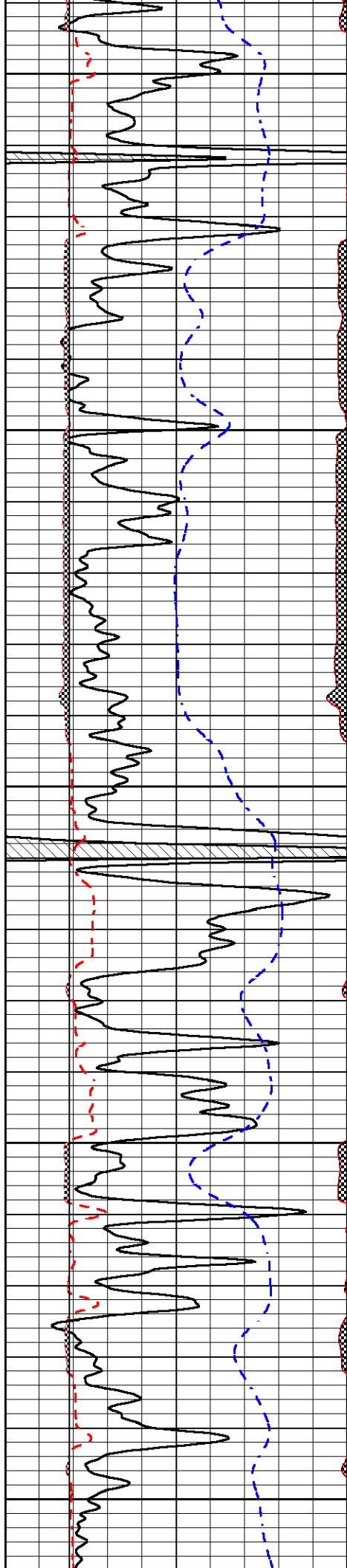
3150

3200

3250

3300





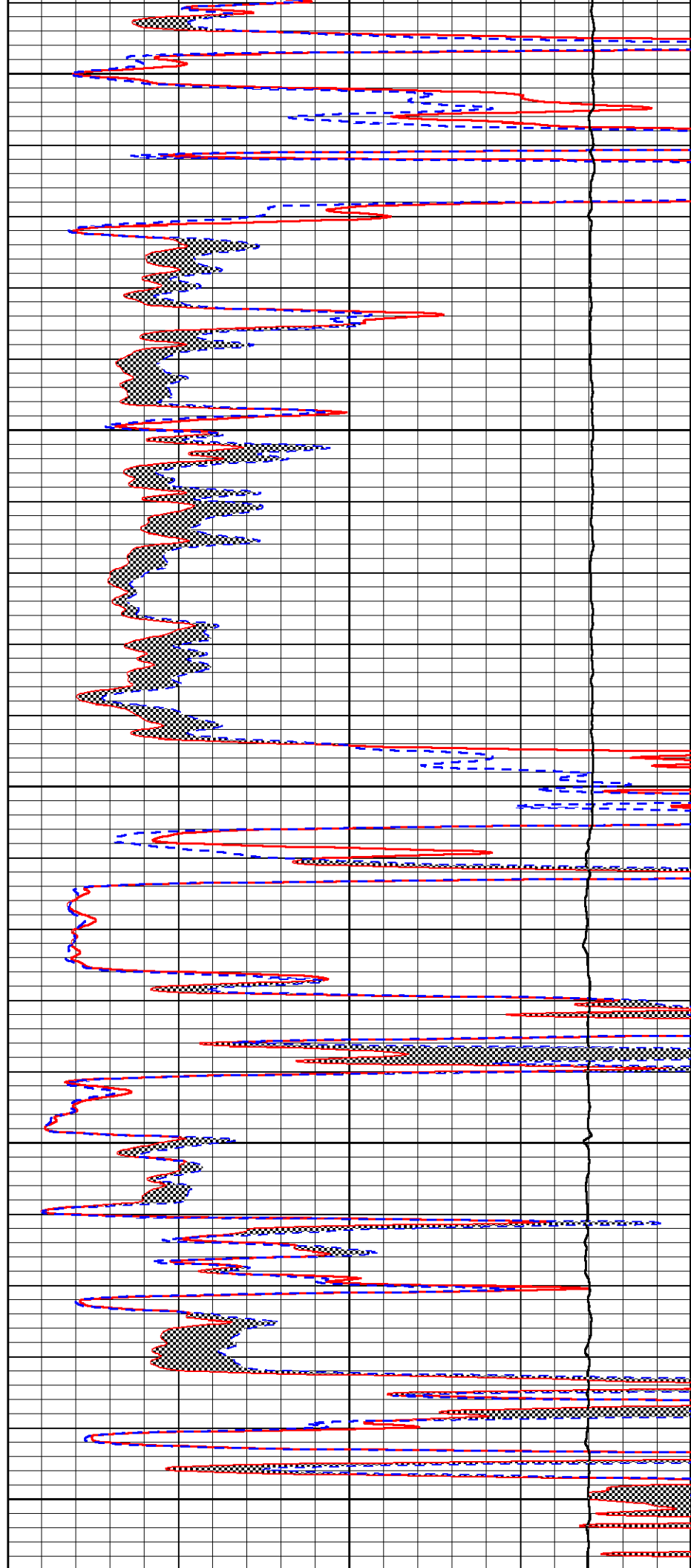
3350

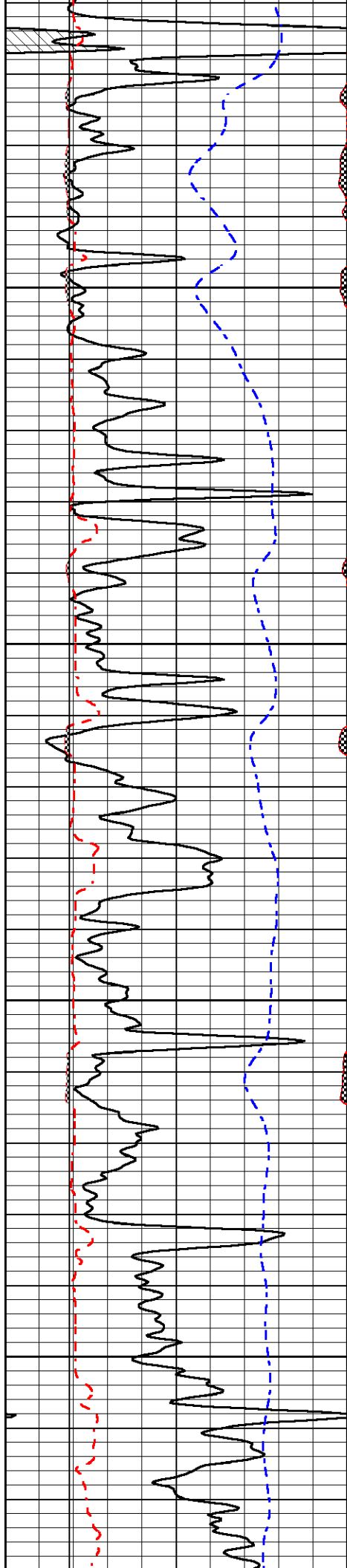
3400

3450

3500

3550



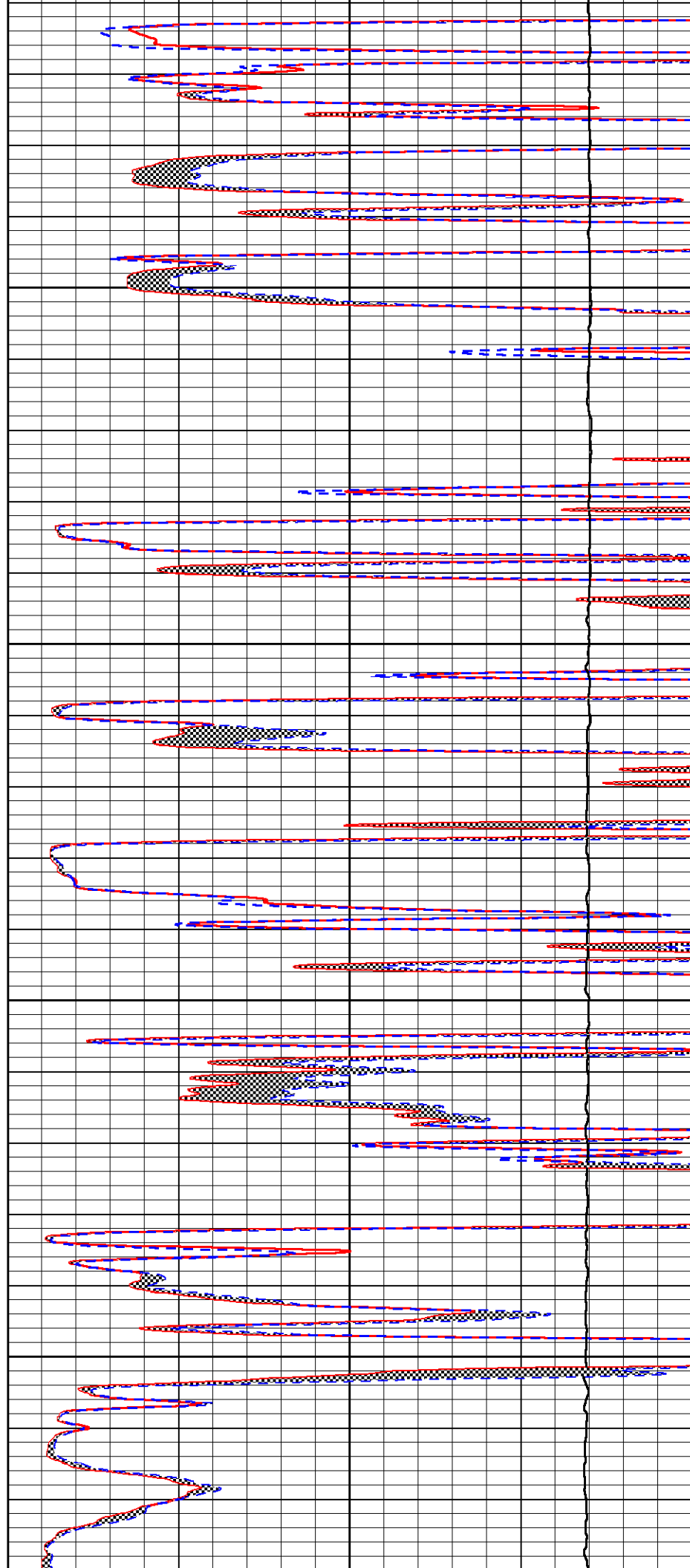


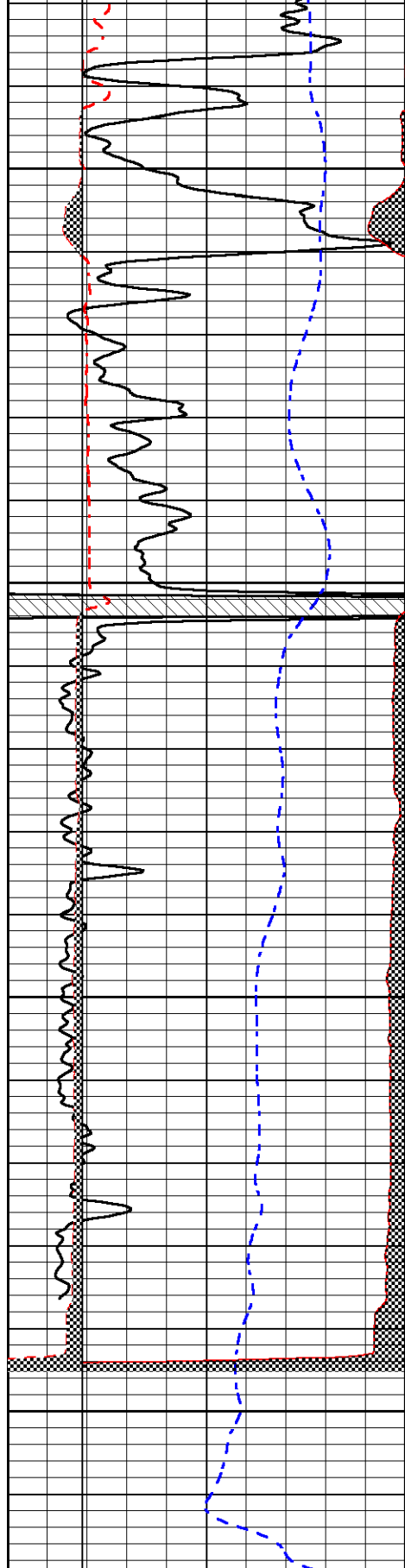
3600

3650

3700

3750





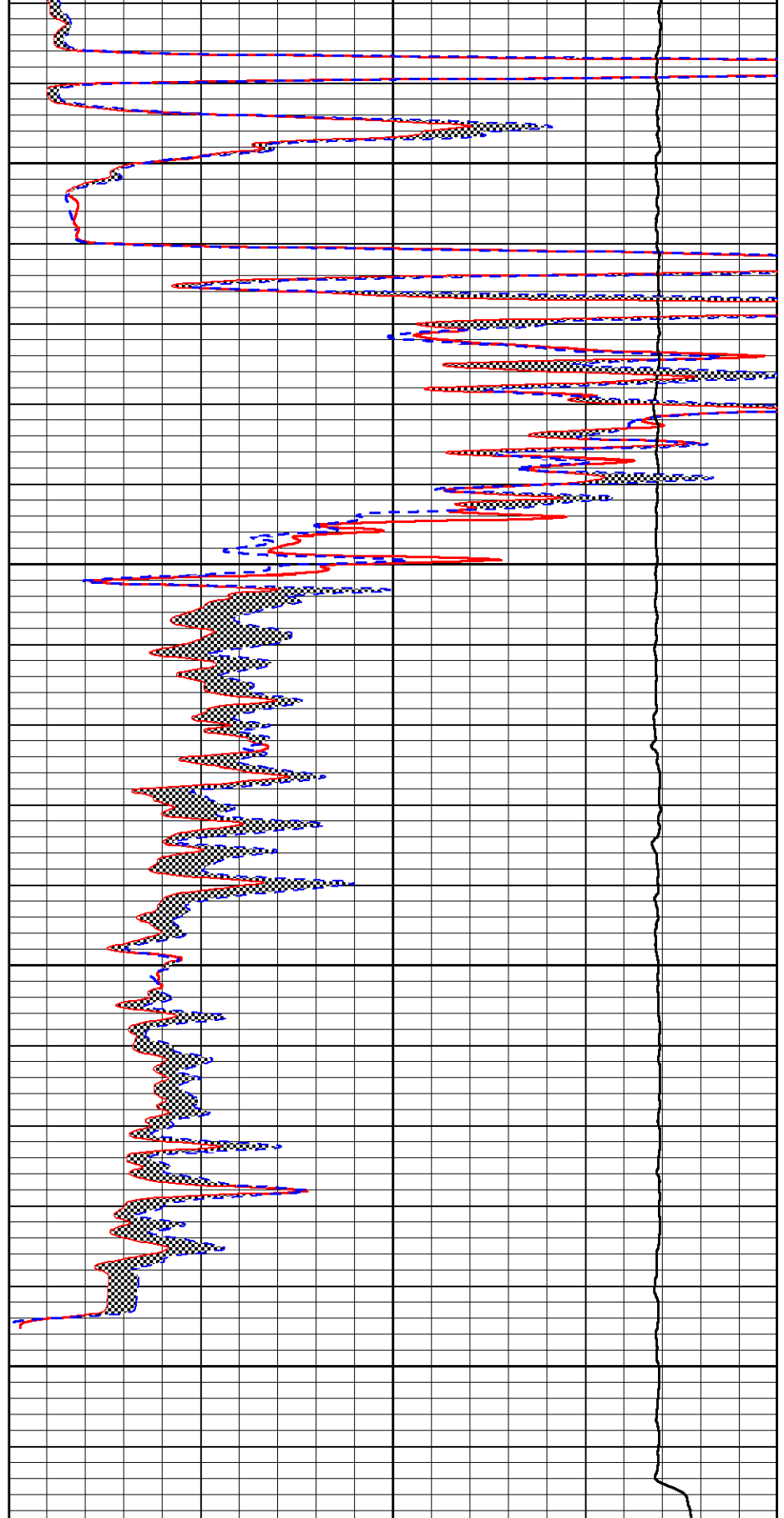
0	GR (GAPI)	150
6	Caliper (in)	16
2.875	mcal (in)	7.875
-200	sp (mV)	0

3800

3850

3900

3950



0	Micro Inverse 1 X 1 (Ohm-m)	40
0	Micro Normal 2" (Ohm-m)	40
10000	Line Weight (lb)	0

REPEAT SECTION



MIDWEST WIRELINE

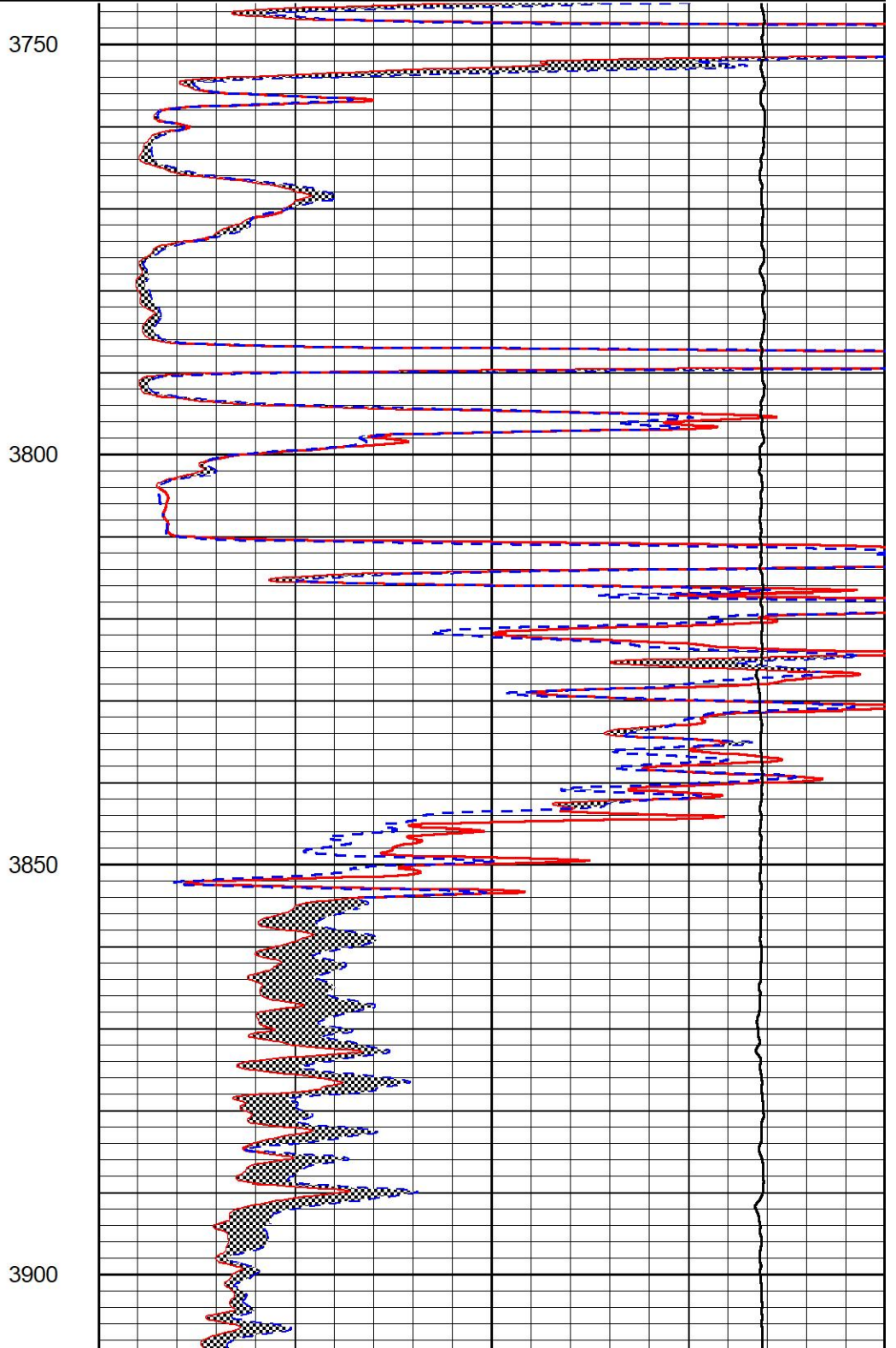
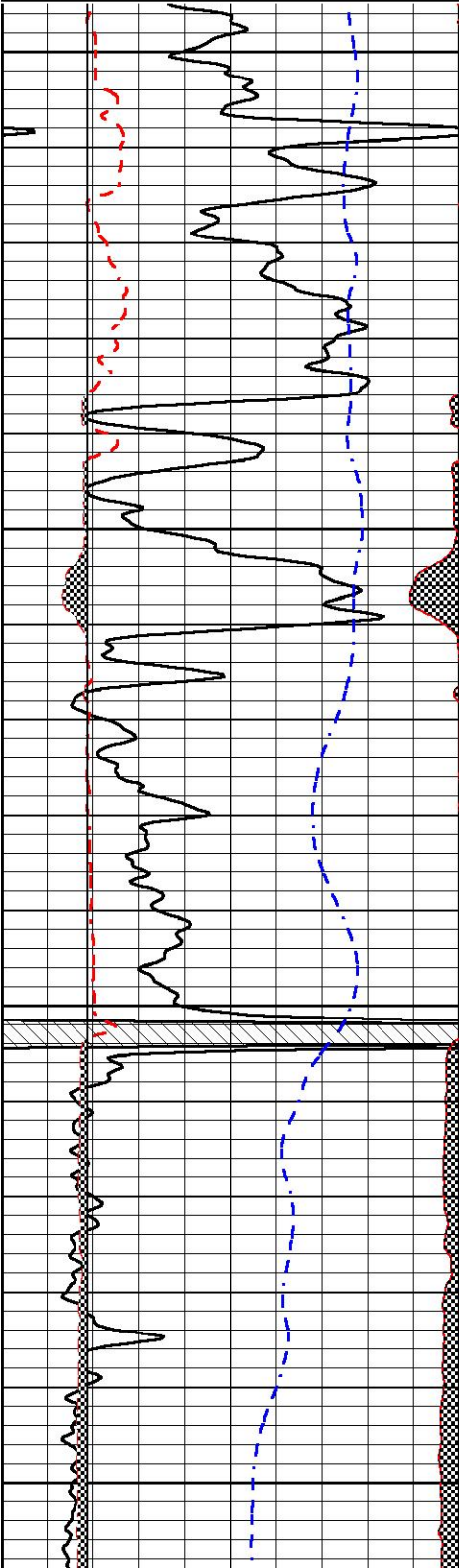
# REPEAT SECTION

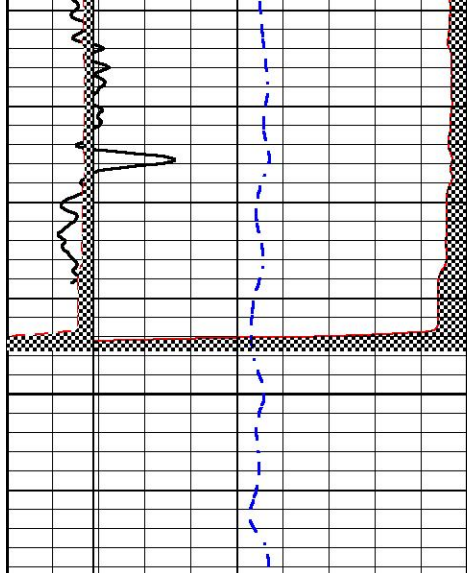
## REPEAT PASS

Database File double g\_mj1 #1.db  
 Dataset Pathname Stack/pass2.1  
 Presentation Format \_micro  
 Dataset Creation Thu Mar 07 00:30:23 2024  
 Charted by Depth in Feet scaled 1:240

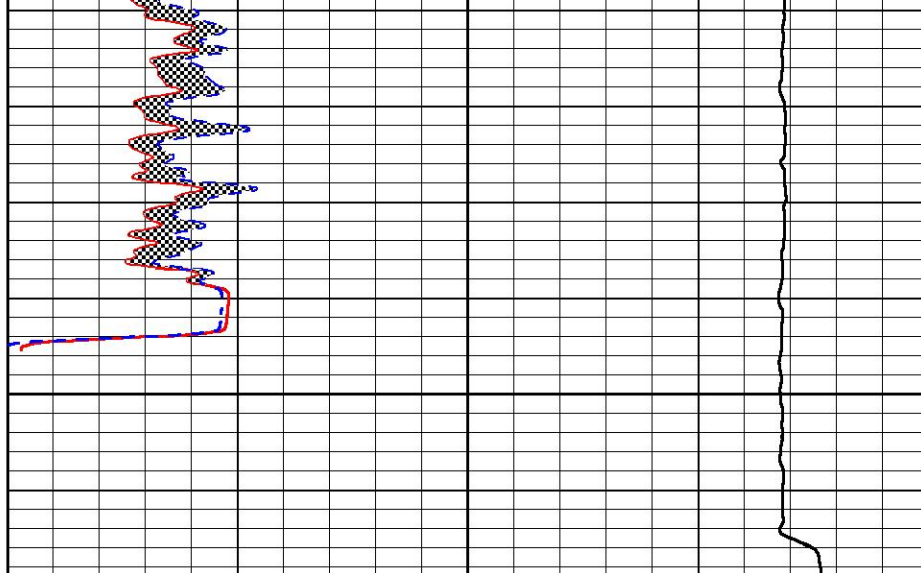
0	GR (GAPI)	150
6	Caliper (in)	16
2.875	mcal (in)	7.875
-200	sp (mV)	0

0	Micro Inverse 1 X 1 (Ohm-m)	40
0	Micro Normal 2" (Ohm-m)	40
10000	Line Weight (lb)	0





3950



0	GR (GAPI)	150
6	Caliper (in)	16
2.875	mcal (in)	7.875
-200	sp (mV)	0

0	Micro Inverse 1 X 1 (Ohm-m)	40
0	Micro Normal 2" (Ohm-m)	40
10000	Line Weight (lb)	0

### Calibration Report

Database File double\_g\_mj1 #1.db  
 Dataset Pathname SonMel/pass3.4  
 Dataset Creation Thu Mar 07 02:30:09 2024

### Microlog Calibration Report

Serial-Model: Pengo1-Pengo  
 Performed: Wed Oct 18 12:48:17 2023

	Readings			References			Results	
	Zero	Cal		Zero	Cal		m	b
Normal	-0.0394	0.4595	V	0.0000	10.0000	Ohm-m	25.5000	-0.2500
Inverse	0.0179	0.4655	V	0.0000	10.0000	Ohm-m	20.0000	0.6000
Caliper	-0.0023	0.0718	V	5.5000	18.5000	in	1.9000	2.3000



MIDWEST WIRELINE

Company Double G Petro LLC  
 Well MJ1 #1  
 Field Keough Northeast  
 County Rush  
 State Kansas