



MIDWEST WIRELINE

DUAL INDUCTION

Company Double G Petro LLC  
 Well MJ1 #1  
 Field Keough Northeast  
 County Rush  
 State Kansas

Company Double G Petro LLC  
 Well MJ1 #1  
 Field Keough Northeast  
 County Rush State Kansas

Location: API #: 15-165-22187-00-00  
 1410 FSL & 630 FEL  
 SEC 14 TWP 16S RGE 20W  
 Permanent Datum Ground Level Elevation 2138  
 Log Measured From Kelly Bushing  
 Drilling Measured From Kelly Bushing  
 Other Services  
 CNL/CDL  
 MEL/BHCS  
 Elevation  
 K.B. 2146  
 D.F.  
 G.L. 2138

Date	3/6/2024
Run Number	One
Depth Driller	3965
Depth Logger	3965
Bottom Logged Interval	3964
Top Log Interval	250
Casing Driller	8,625 @ 267
Casing Logger	266
Bit Size	7.875
Type Fluid in Hole	Chemical
Salinity, ppm CL	7700
Density / Viscosity	9.6 63
pH / Fluid Loss	10.5 10.4
Source of Sample	Flowline
Rm @ Meas. Temp	0.75 @ 70
Rmt @ Meas. Temp	0.56 @ 70
Rmc @ Meas. Temp	1.01 @ 70
Source of Rmf / Rmc	Charts
Rm @ BHT	0.45 @ 116
Operating Rig Time	3.5 Hours
Max Rec. Temp. F	116
Equipment Number	P-24
Location	Hays
Recorded By	T. Martin
Witnessed By	Jason Alm

<<< Fold Here >>>

All interpretations are opinions based on inferences from electrical or other measurements and Midwest Wireline LLC cannot and does not guarantee the accuracy or correctness of any interpretation, and Midwest Wireline LLC will not be liable or responsible for any loss, costs, damages, or expenses incurred or sustained by anyone resulting from any interpretation made by any of our officers, agents or employees.

Comments

N/A DENOTES NOT AVAILABLE OR NON-APPLICABLE.

Liebenthal, KS, W on Blktp  
 9.5 to Rd 150, 1.3 N, W into

Log Measured From: Kelly Bushing 8 Ft. Above Permanent Datum

THANK YOU FOR USING MIDWEST WIRELINE LLC  
 785-625-3858

Your Midwest Wireline Crew

Engineer: T. Martin  
 Operator:  
 Operator:  
 Operator:

This Log Record Was Witnessed By

Primary Witness: Jason Alm  
 Secondary Witness: Greg Patterson  
 Secondary Witness:  
 Secondary Witness:

Sensor	Offset (ft)	Schematic	Description	Length (ft)	O.D. (in)	Weight (lb)
GR	32.75		GR-M&W (102)	3.00	3.50	50.00
CNLSC CNSSC	29.65 28.90		CNT-M&W (207)	5.00	3.50	100.00
LSD DCAL SSD	20.60 20.58 20.10		CDL-M&W (305-24)	8.50	4.00	250.00
RLL3F RLL3	15.50 15.50		DIL-M&W (501 HT)	18.25	3.50	220.00
CILD	8.33		CILM	4.50		
SP	0.20					

Dataset: double g\_mj1 #1.db: field/well/Stack/pass3.1  
 Total length: 34.75 ft  
 Total weight: 620.00 lb  
 O.D.: 4.00 in

# Log Variables

DatabaseC:\ProgramData\Warrior\Data\double g\_mj1 #1.db  
 Dataset field/well/Stack/pass3.1/\_vars\_

## Top - Bottom

BOREID in 7.875	BOTTEMP degF 116	CASEOD in 5.5	CASETHCK in 0	FLUIDDEN g/cc 1	MATRXDEN g/cc 2.71	NPORSEL Limestone	PERFS No
SNDERR mmho/m 0	SNDERRM mmho/m 3	SPSHIFT mV 40	SRFTEMP degF 40	SZCOR Off	TDEPTH ft 3965		

## Variable Description

BOREID : Borehole I.D.  
 BOTTEMP : Bottom Hole Temperature  
 CASEOD : Casing O.D.  
 CASETHCK : Casing Thickness  
 FLUIDDEN : Fluid Density  
 MATRXDEN : Matrix Density  
 NPORSEL : Neutron Porosity Curve Select

PERFS : Perforation Flag  
 SNDERR : Deep Sonde Error Correction  
 SNDERRM : Medium Sonde Error Correction  
 SPSHIFT : S.P. Baseline Offset  
 SRFTEMP : Surface Temperature  
 SZCOR : CN Size Cor. ?  
 TDEPTH : Total Depth

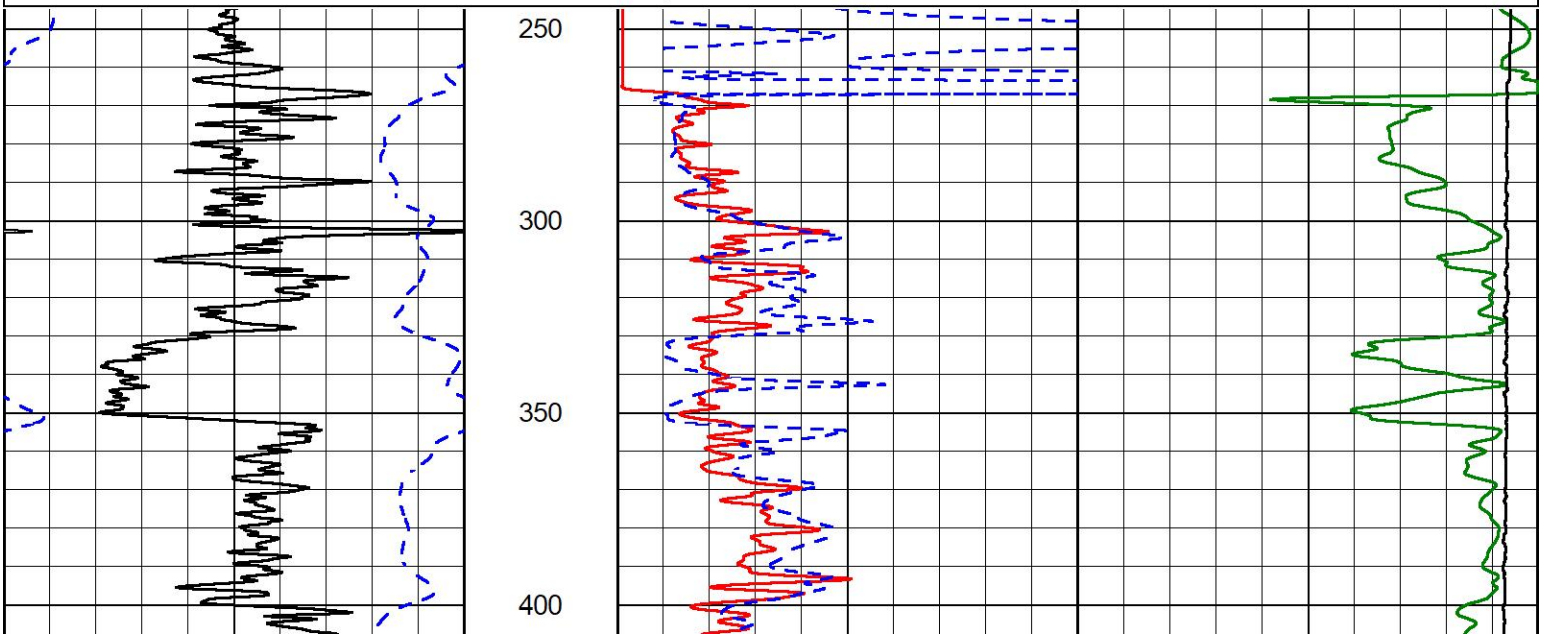


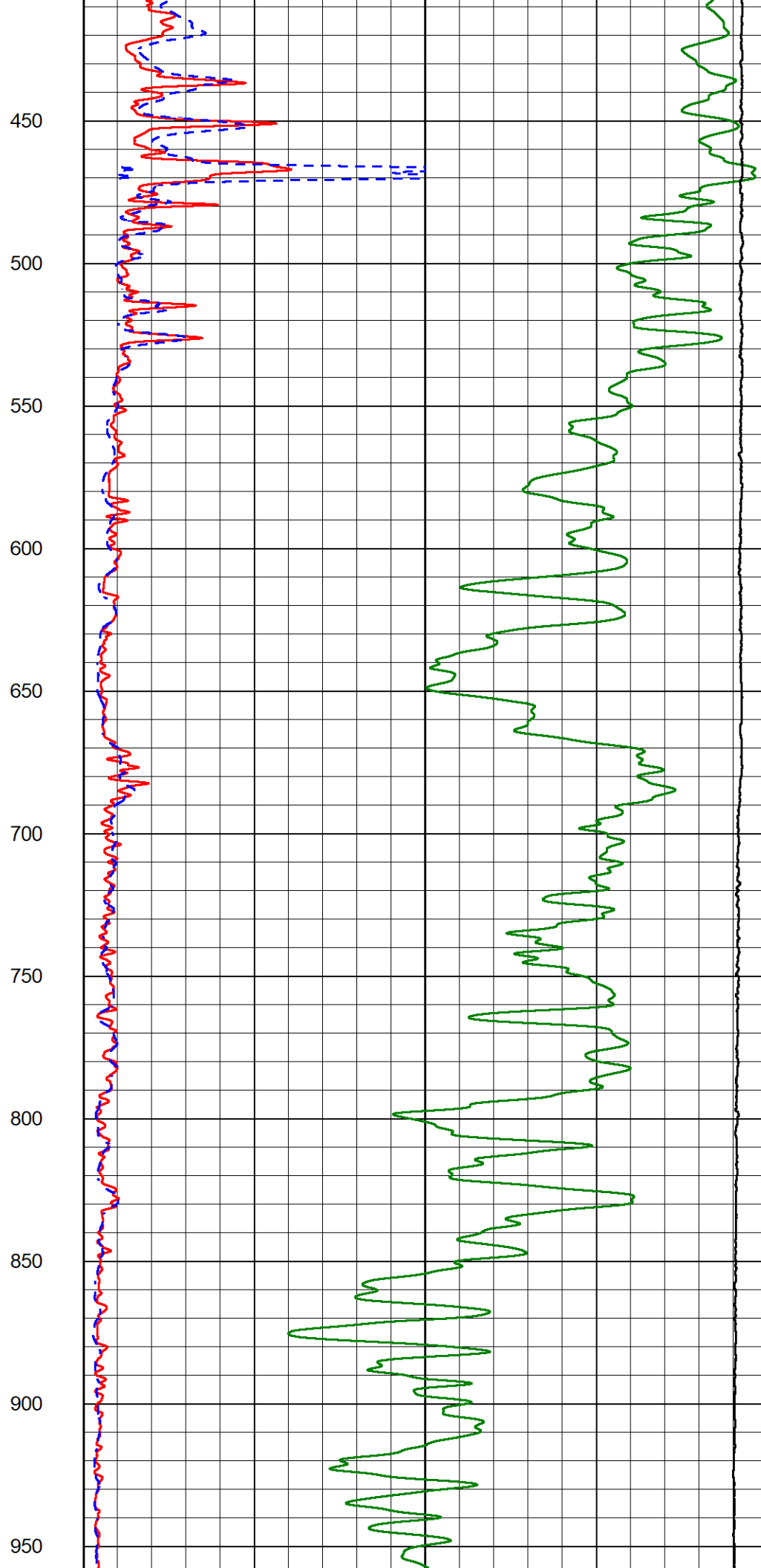
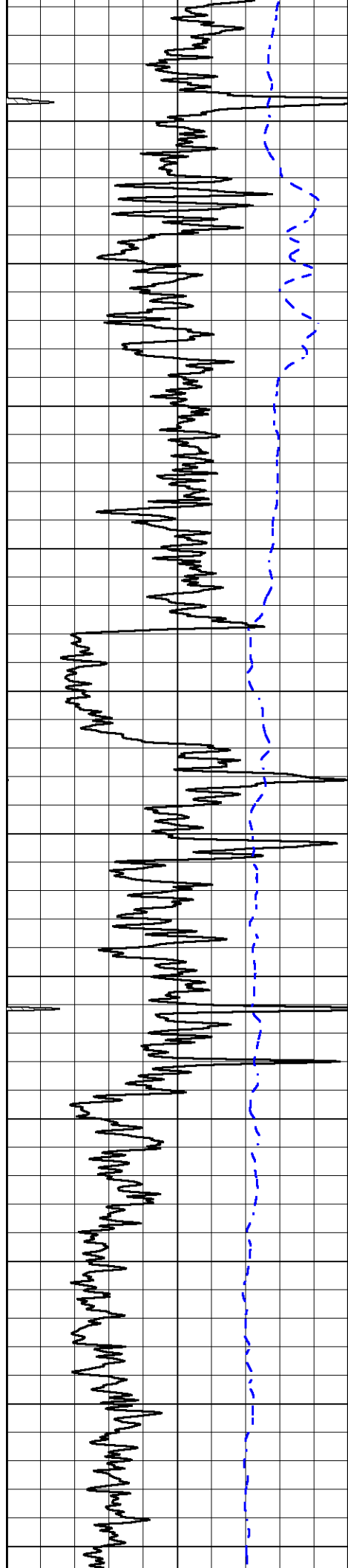
## 2" SCALE RESISTIVITY

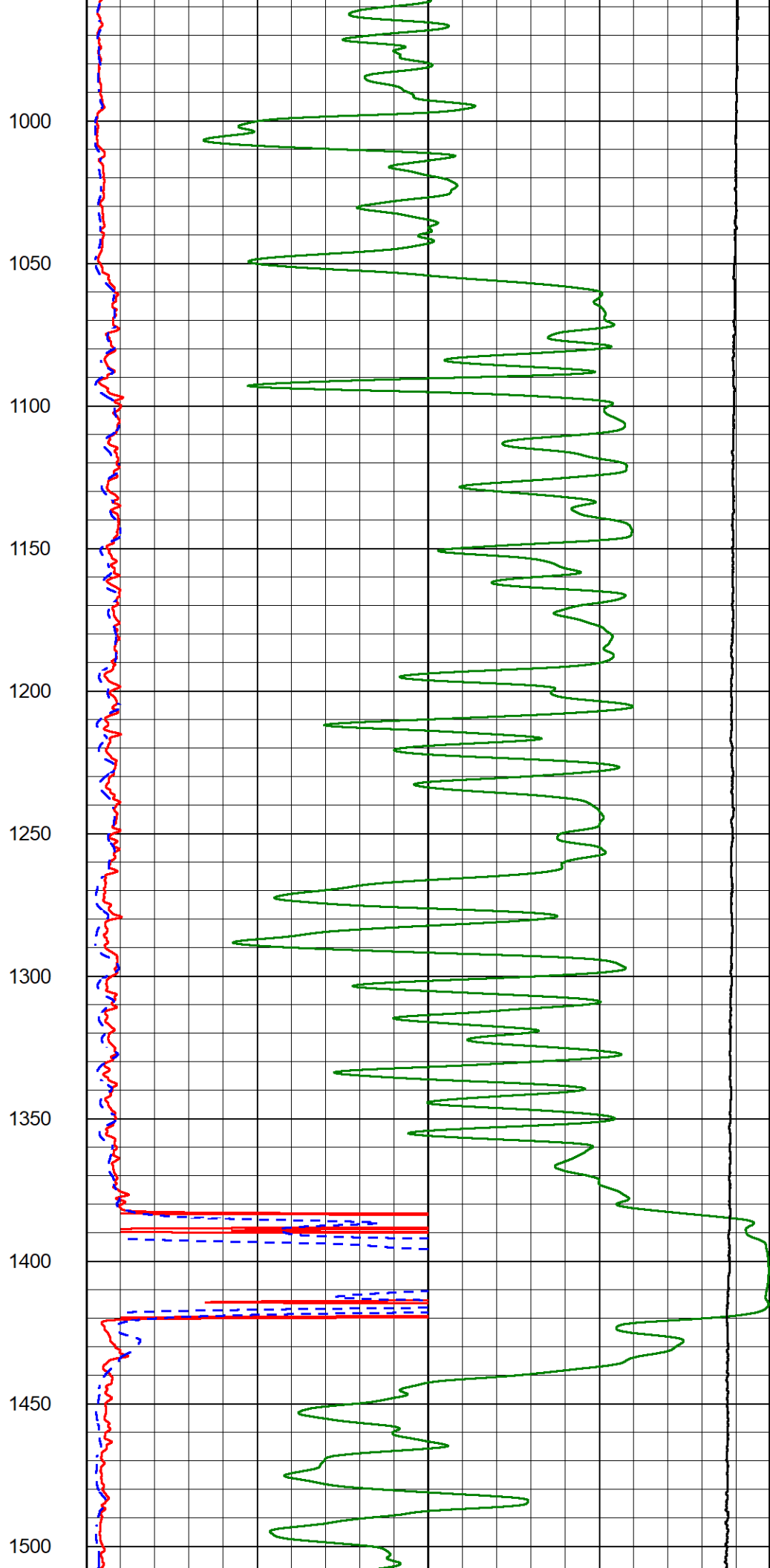
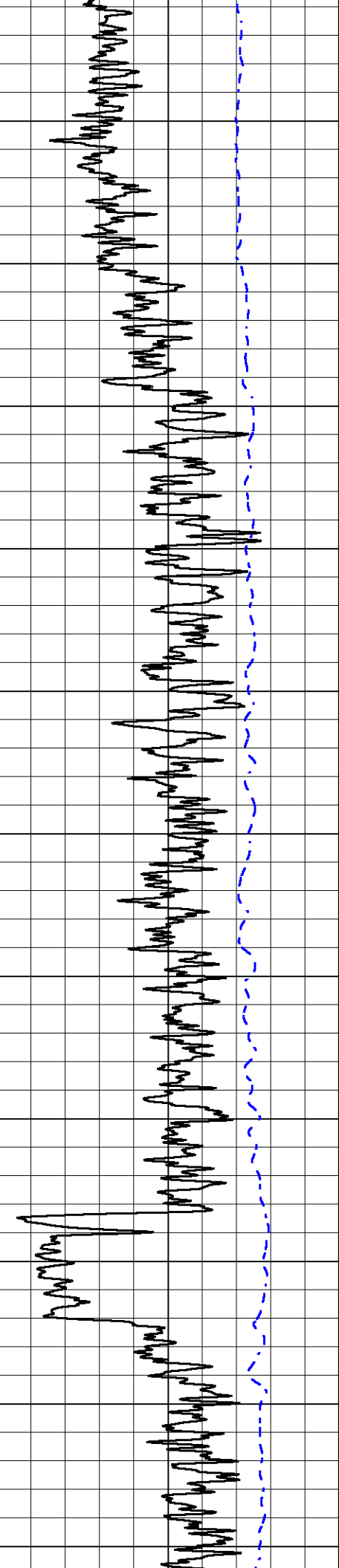
### MAIN PASS

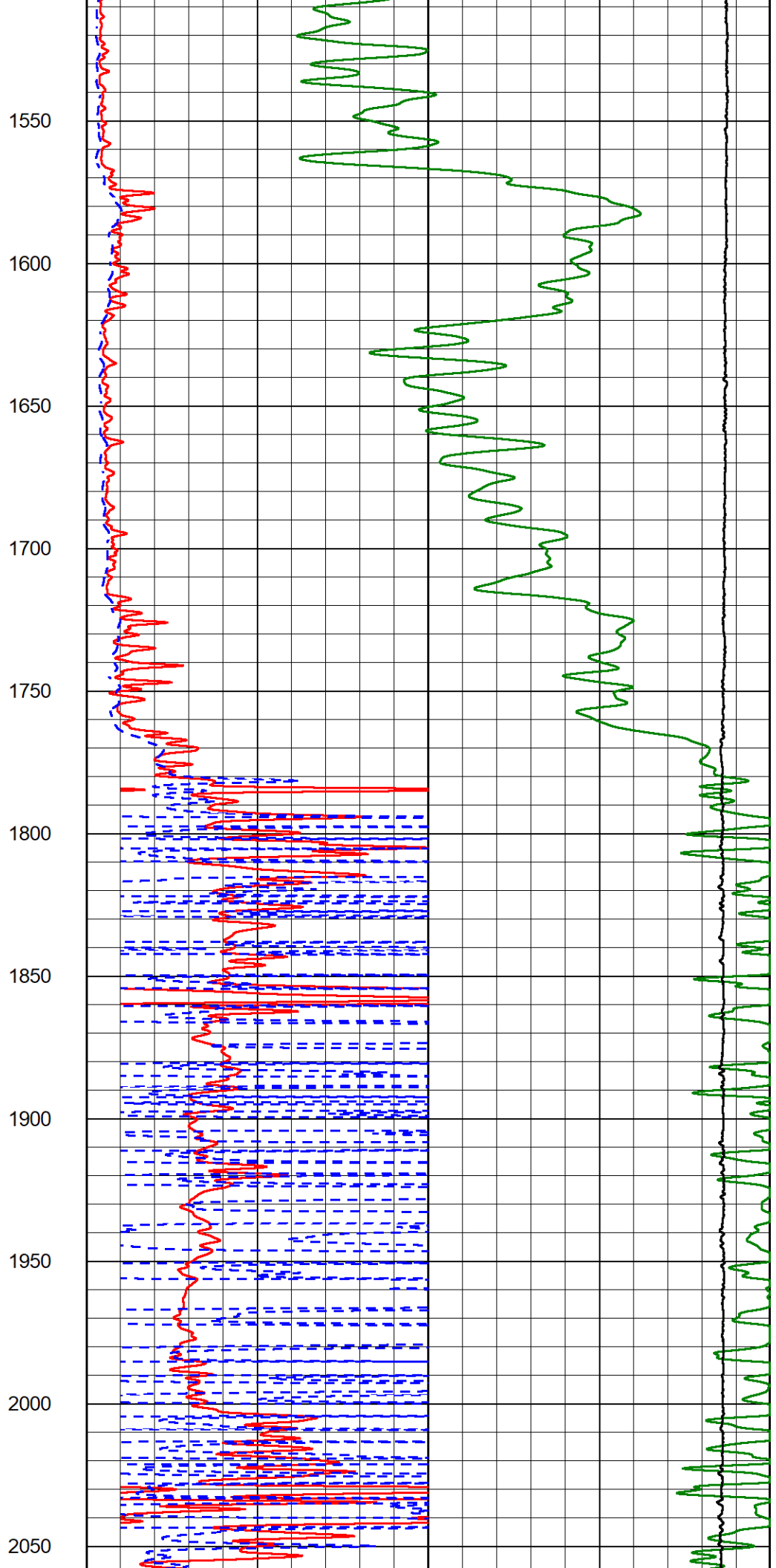
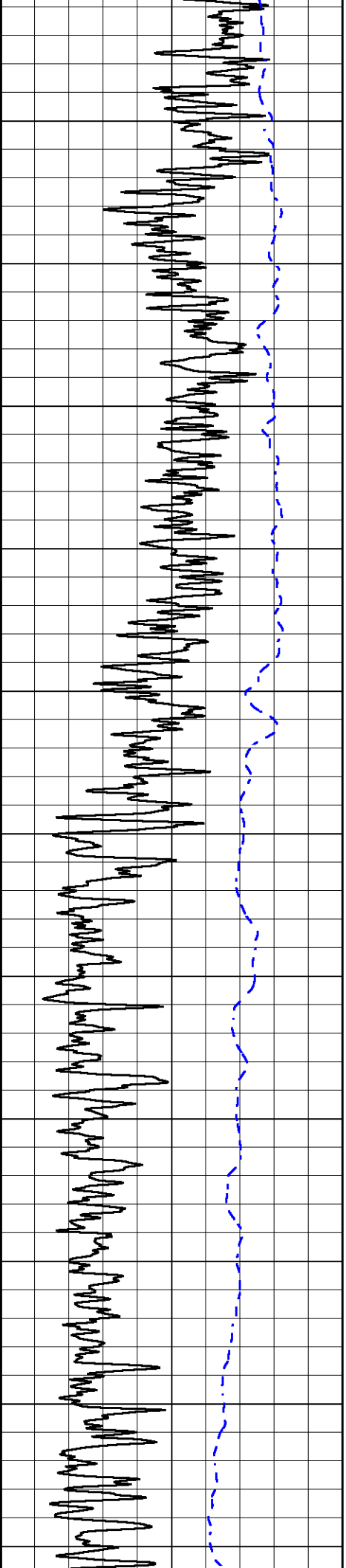
Database File double g\_mj1 #1.db  
 Dataset Pathname Stack/pass3.2  
 Presentation Format \_dil2in  
 Dataset Creation Thu Mar 07 01:04:56 2024  
 Charted by Depth in Feet scaled 1:600

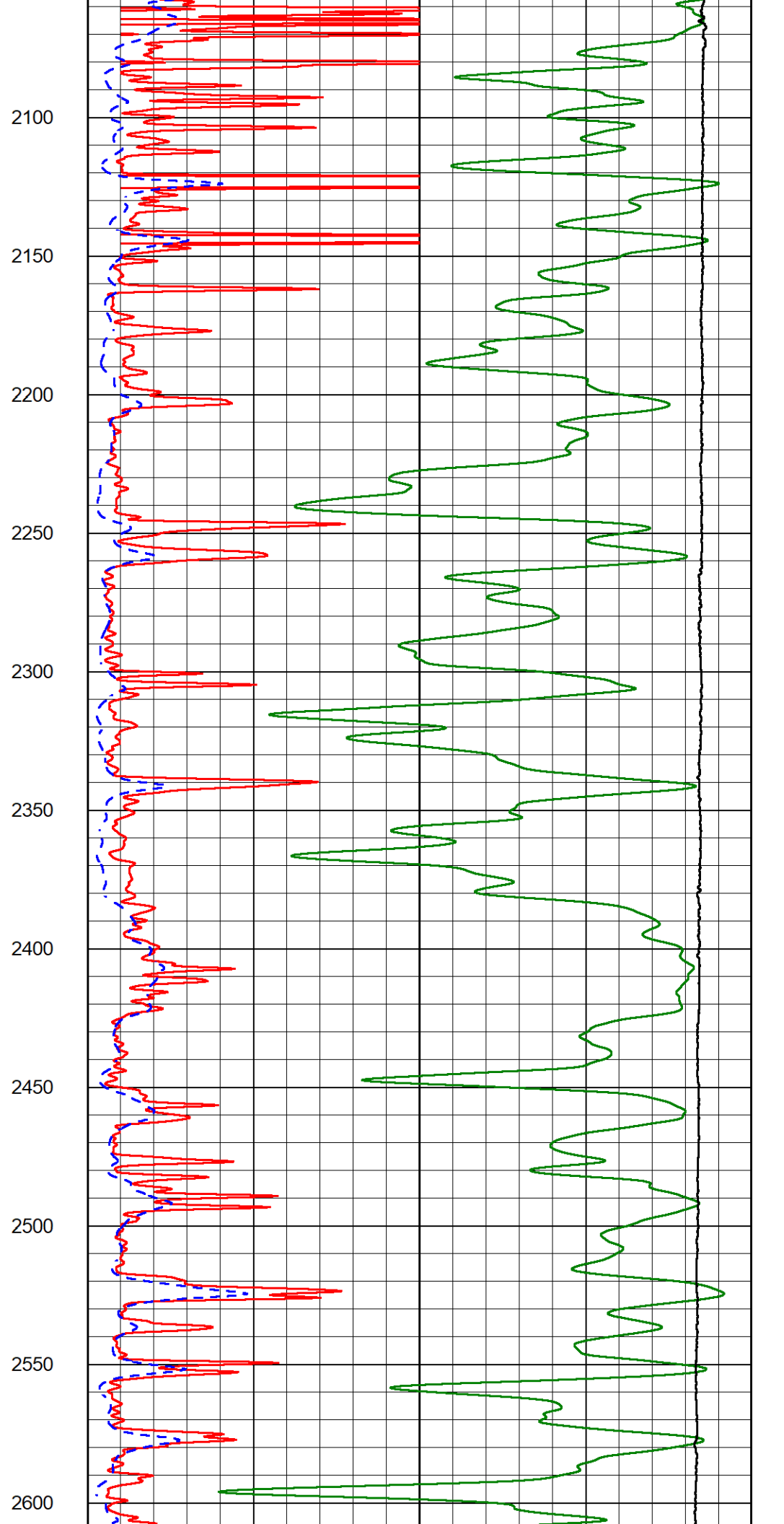
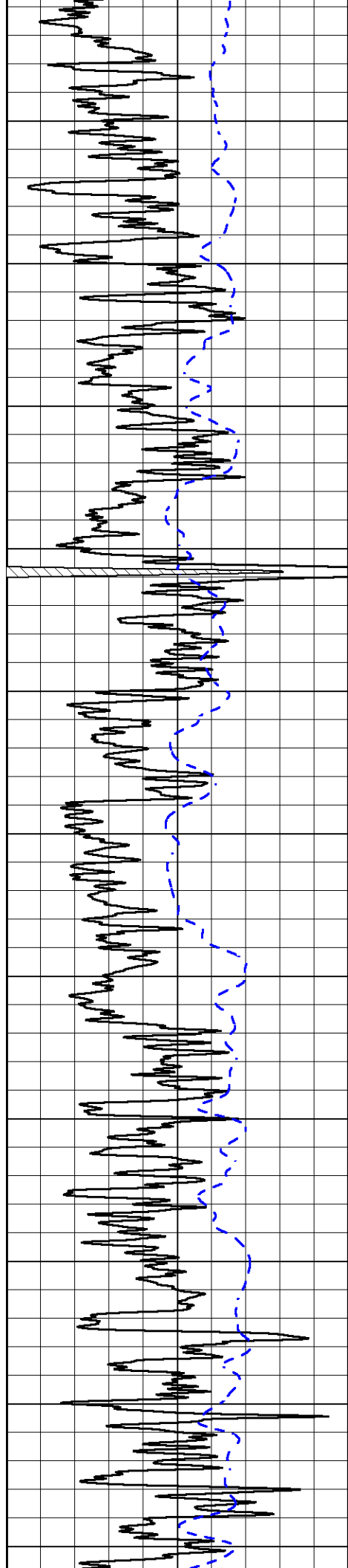
0	Gamma Ray (GAPI)	150	1000	Conductivity (mmho/m)	0
-200	SP (mV)	0	15000	Line Tension (lb)	0
			0	RLL3 (Ohm-m)	50
			0	Deep Resistivity (Ohm-m)	50
			50	RLL3 (Ohm-m)	200
			50	Deep Resistivity (Ohm-m)	200

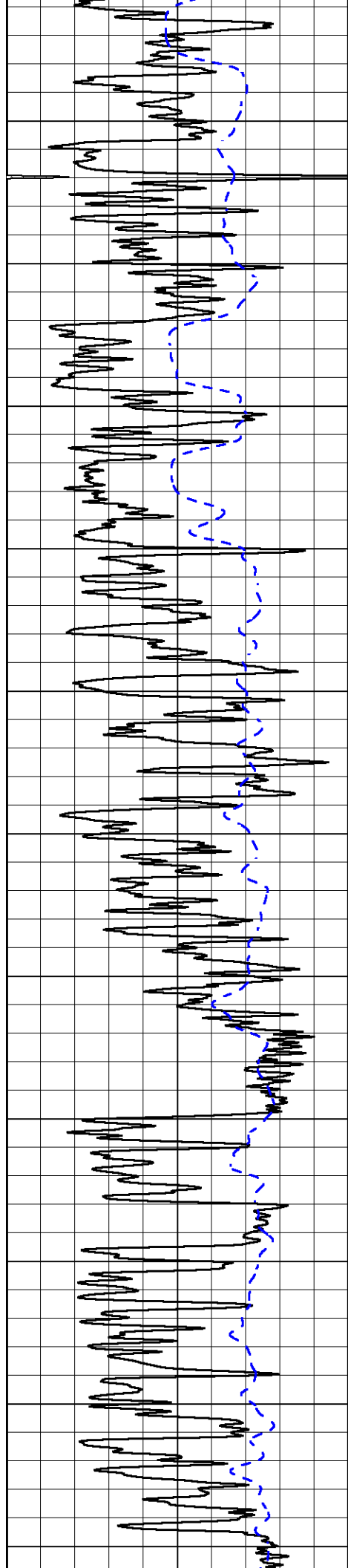












2650

2700

2750

2800

2850

2900

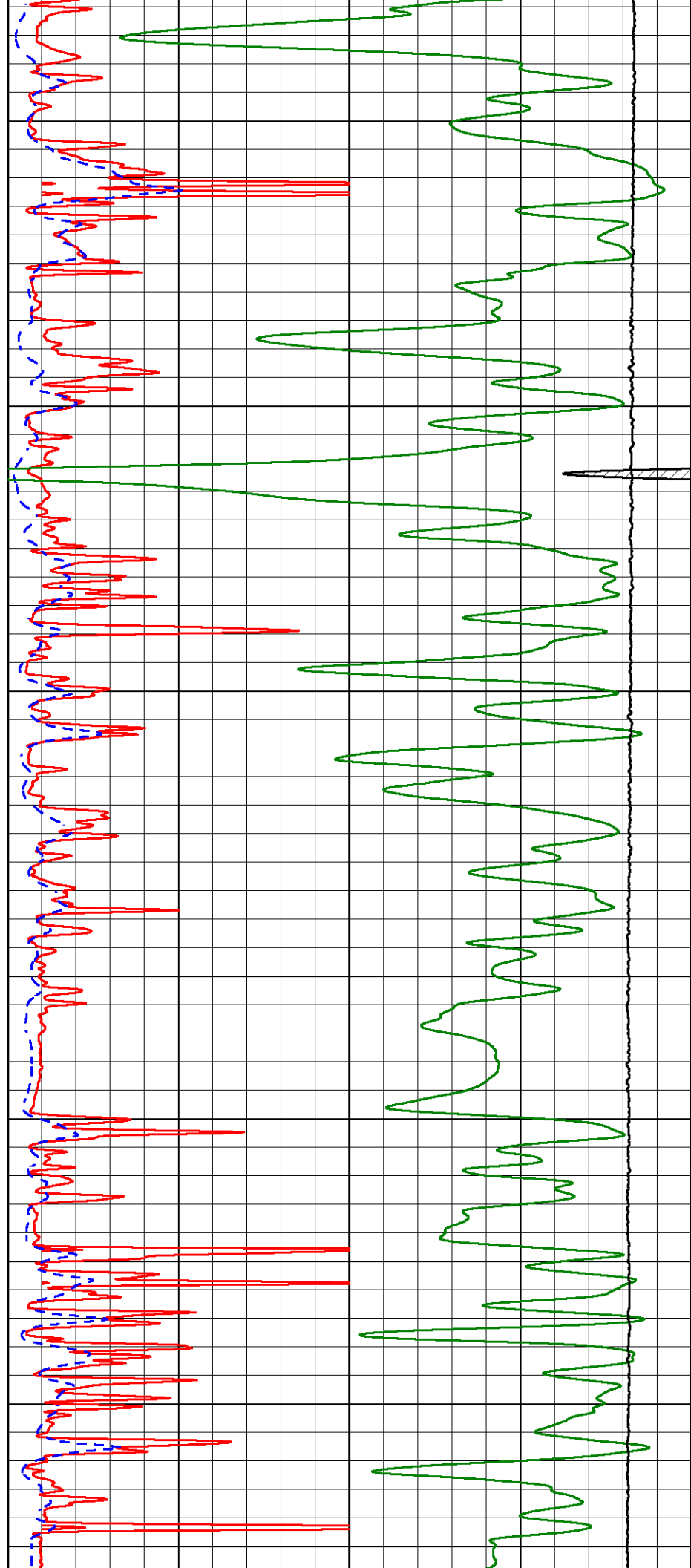
2950

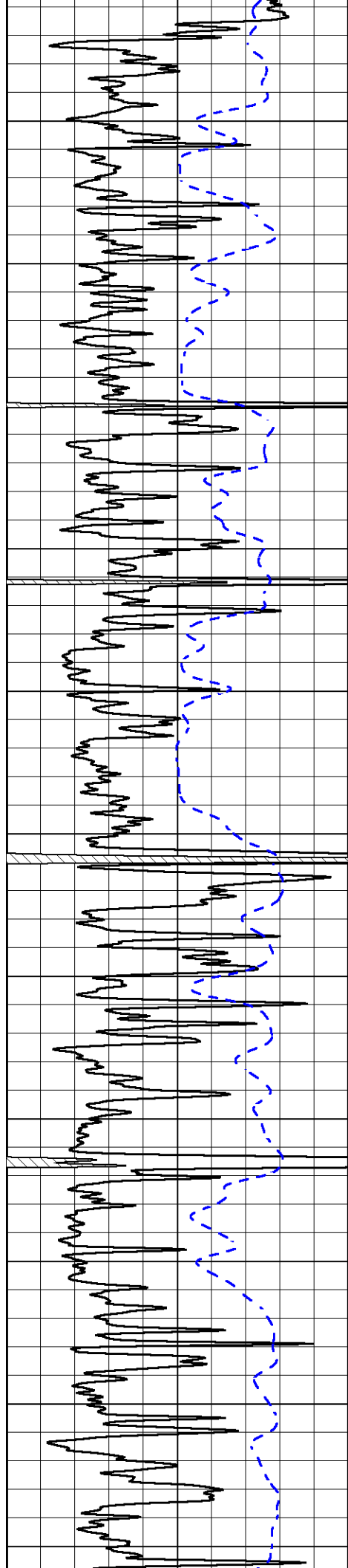
3000

3050

3100

3150





3200

3250

3300

3350

3400

3450

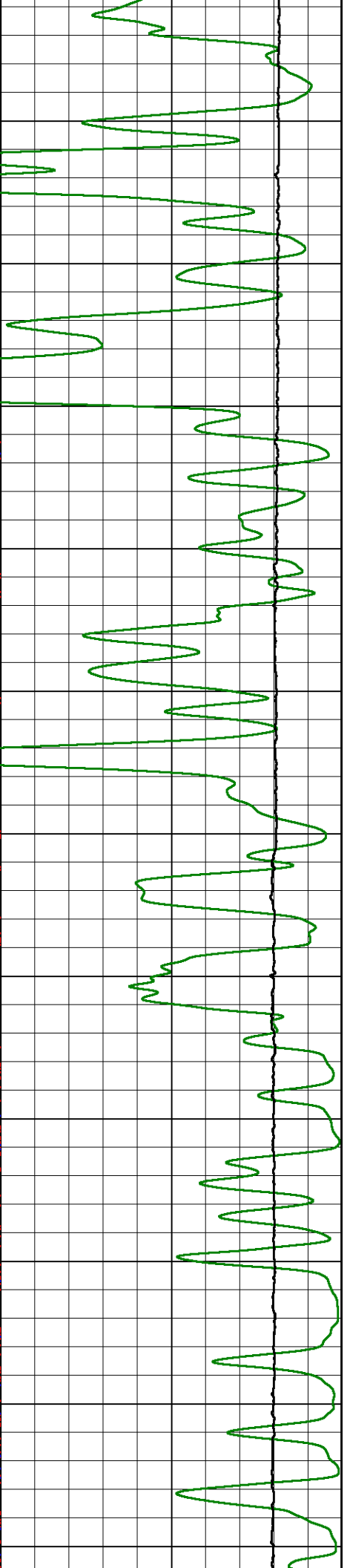
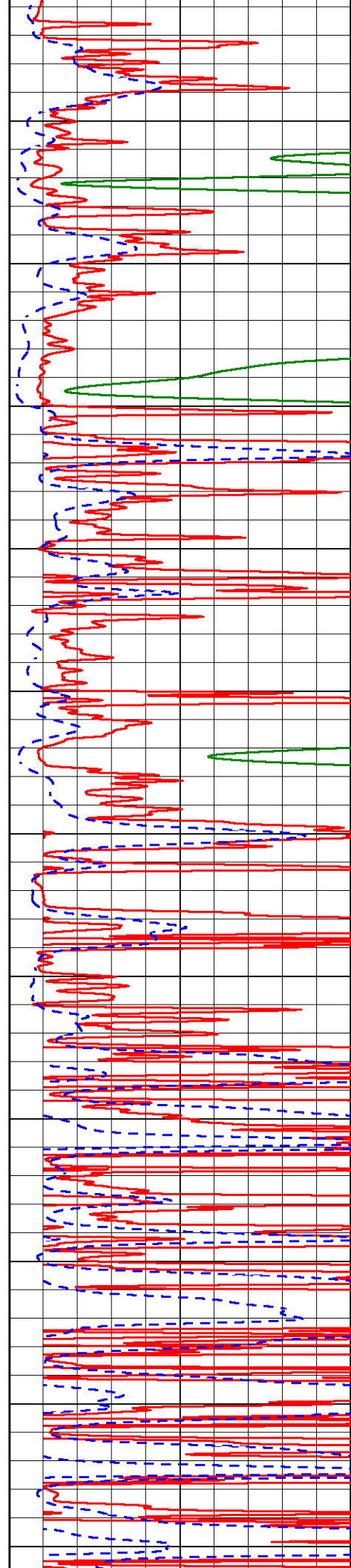
3500

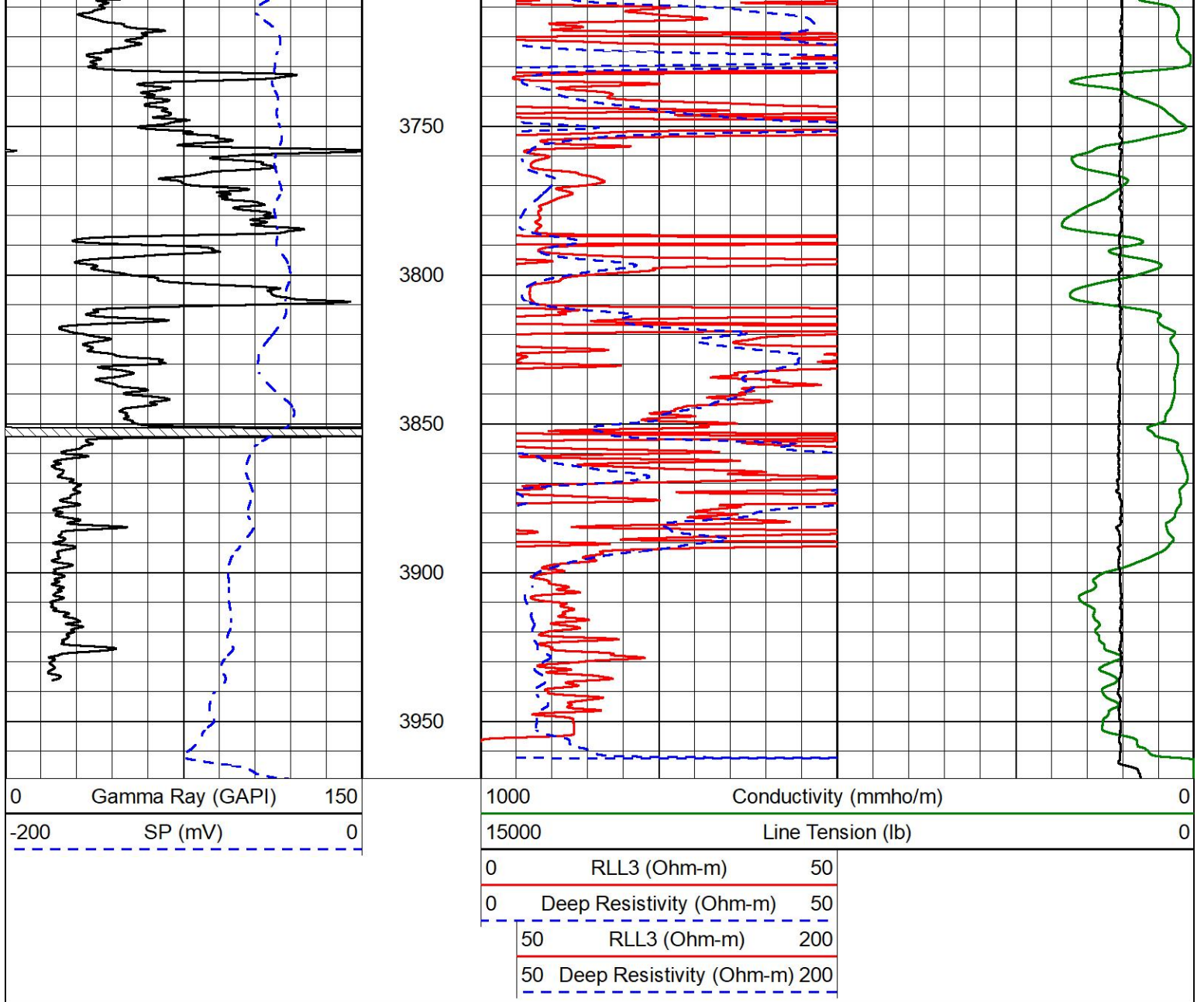
3550

3600

3650

3700



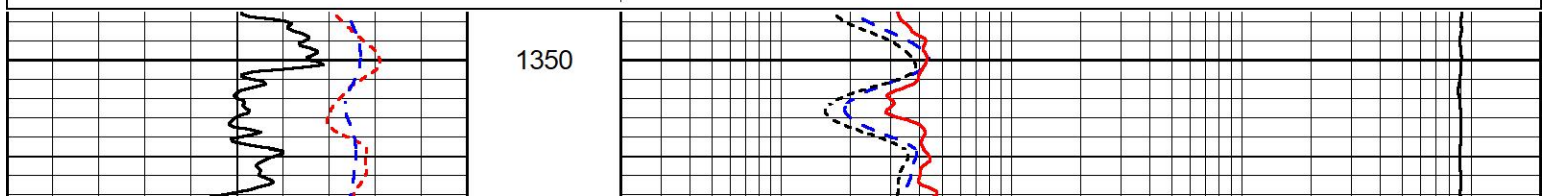


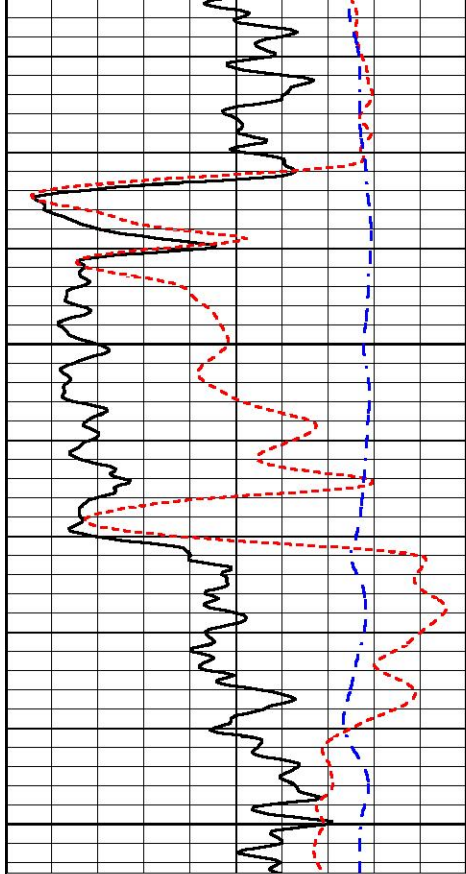
# ANHYDRITE SECTION

## MAIN PASS

Database File double g\_mj1 #1.db  
 Dataset Pathname Stack/pass3.4  
 Presentation Format \_dil  
 Dataset Creation Thu Mar 07 00:51:15 2024  
 Charted by Depth in Feet scaled 1:240

0	Gamma Ray (GAPI)	150	0.2	Deep Resistivity (Ohm-m)	2000
-160	RXORT	40	0.2	Medium Resistivity (Ohm-m)	2000
-200	SP (mV)	0	0.2	RLL3 (Ohm-m)	2000
			10000	Line Tension (lb)	0

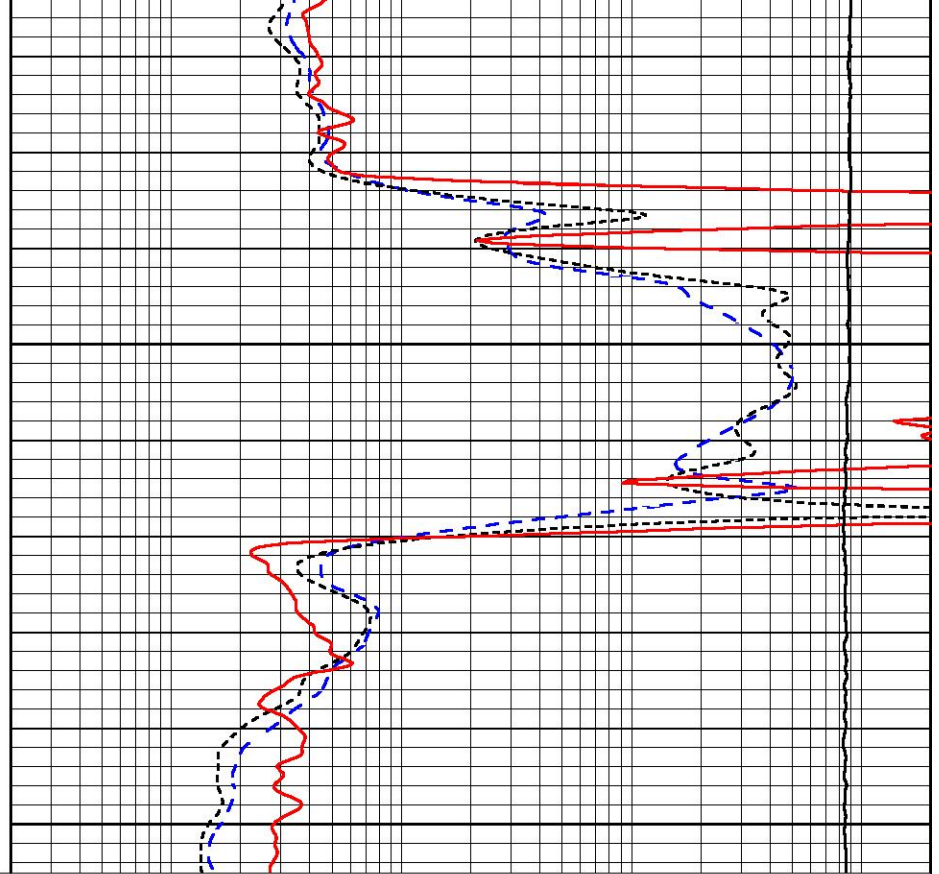




1400

1450

0	Gamma Ray (GAPI)	150
-160	RXORT	40
-200	SP (mV)	0



0.2	Deep Resistivity (Ohm-m)	2000
0.2	Medium Resistivity (Ohm-m)	2000
0.2	RLL3 (Ohm-m)	2000
10000	Line Tension (lb)	0



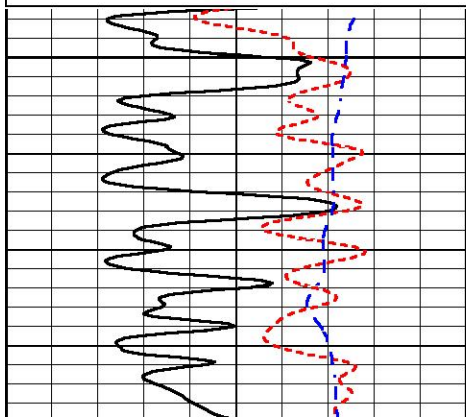
# DETAIL SECTION

## MAIN PASS

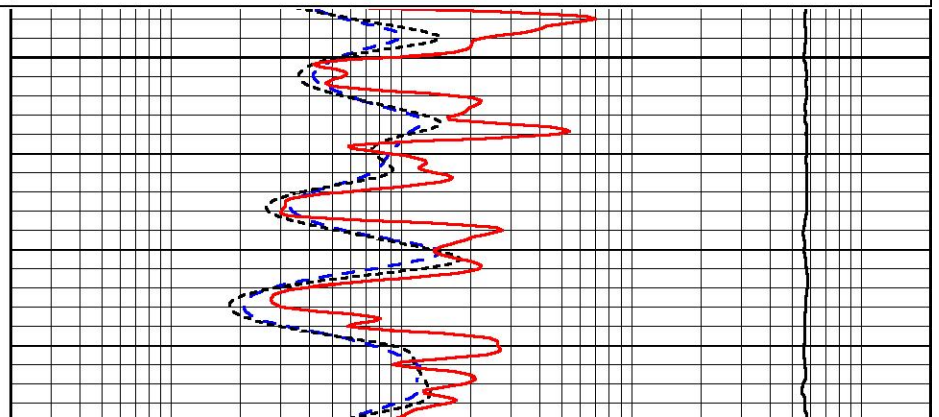
Database File double g\_mj1 #1.db  
 Dataset Pathname Stack/pass3.1  
 Presentation Format \_dil  
 Dataset Creation Thu Mar 07 01:05:05 2024  
 Charted by Depth in Feet scaled 1:240

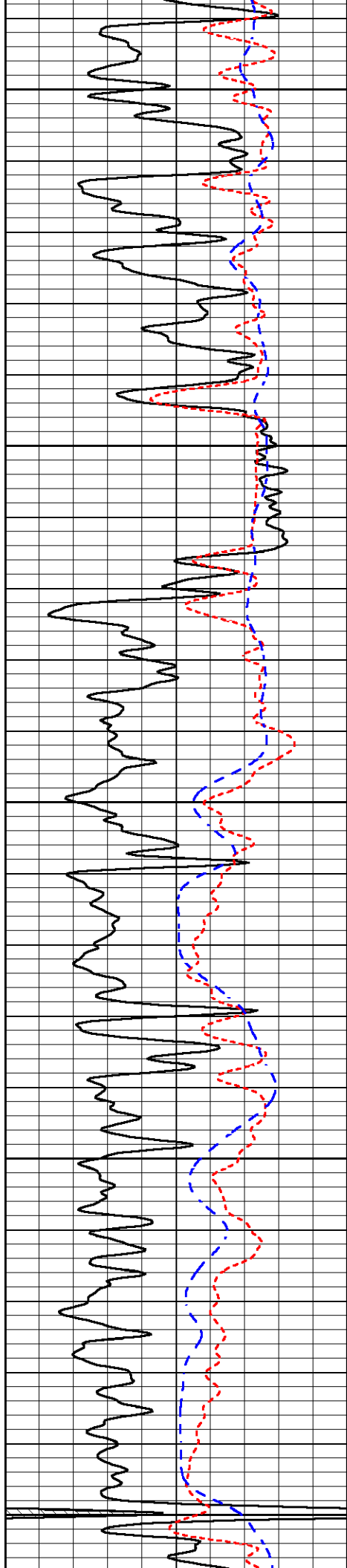
0	Gamma Ray (GAPI)	150
-160	RXORT	40
-200	SP (mV)	0

0.2	Deep Resistivity (Ohm-m)	2000
0.2	Medium Resistivity (Ohm-m)	2000
0.2	RLL3 (Ohm-m)	2000
10000	Line Tension (lb)	0



3050





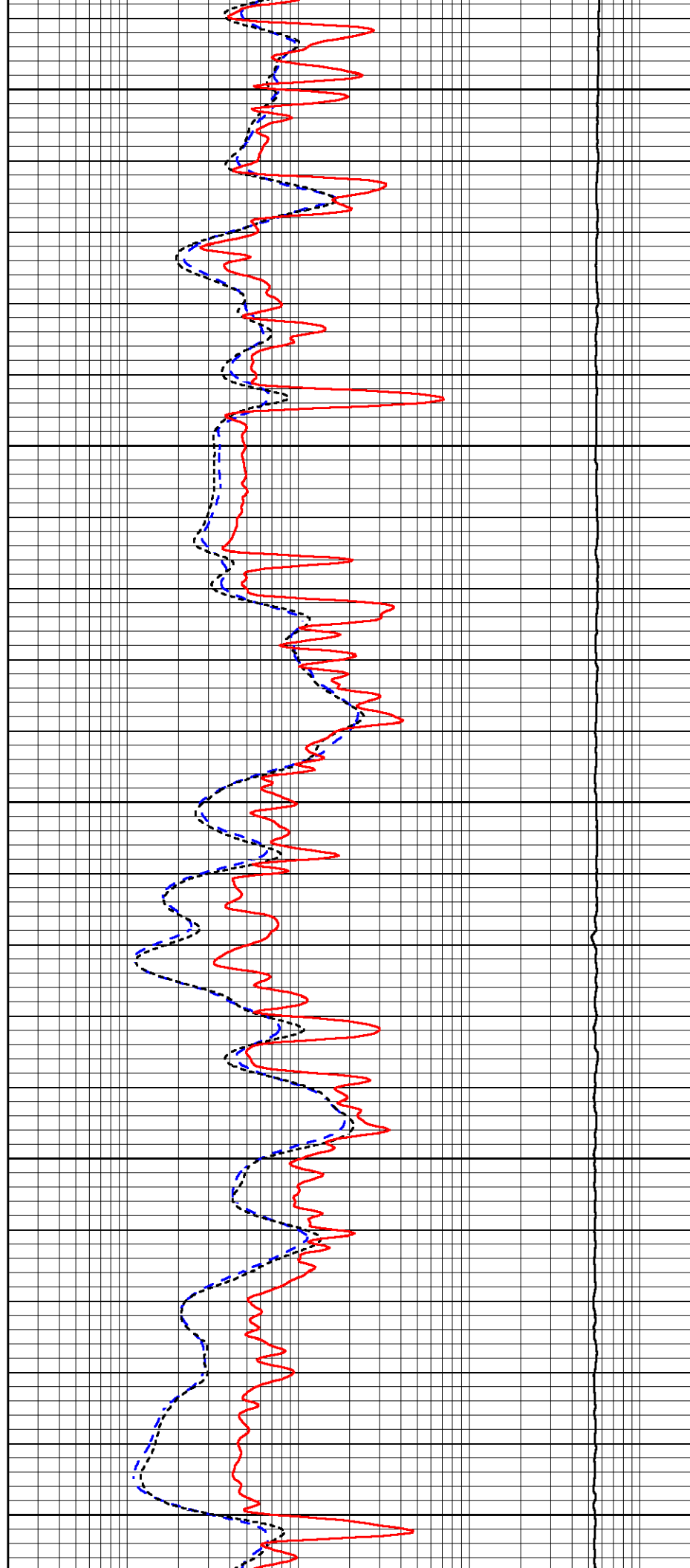
3100

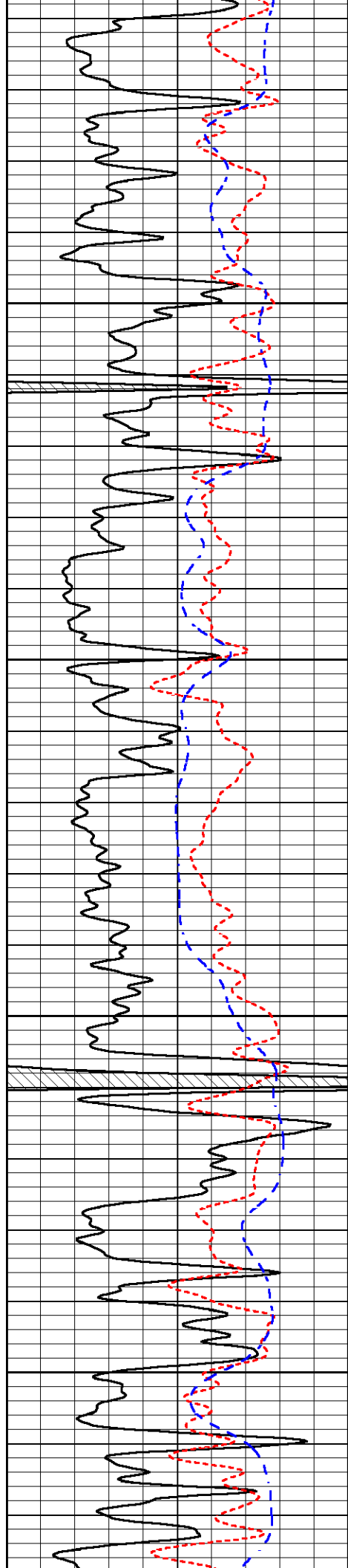
3150

3200

3250

3300



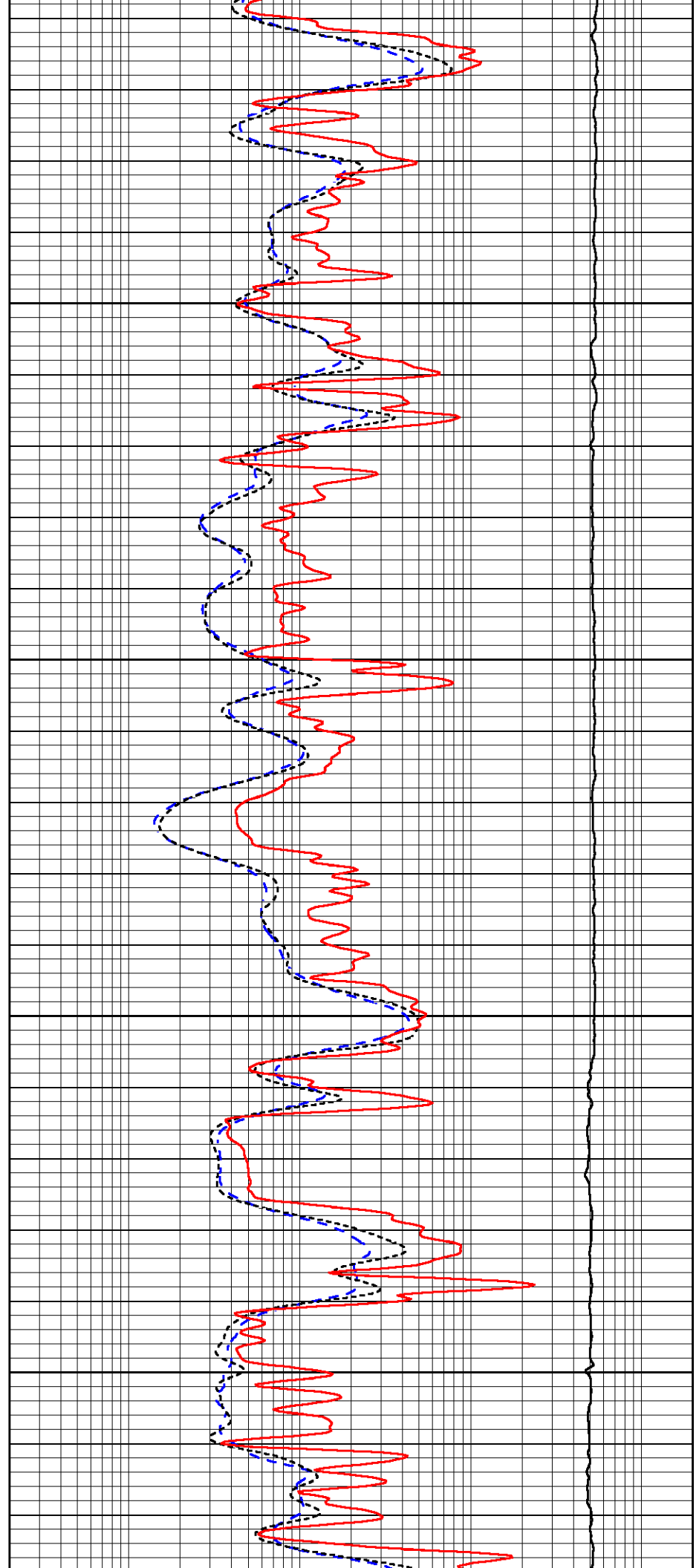


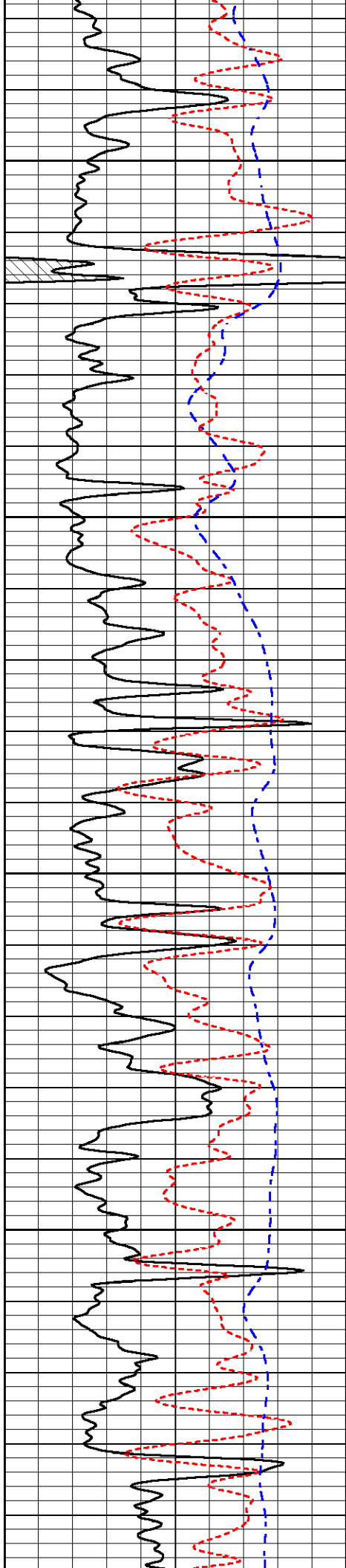
3350

3400

3450

3500



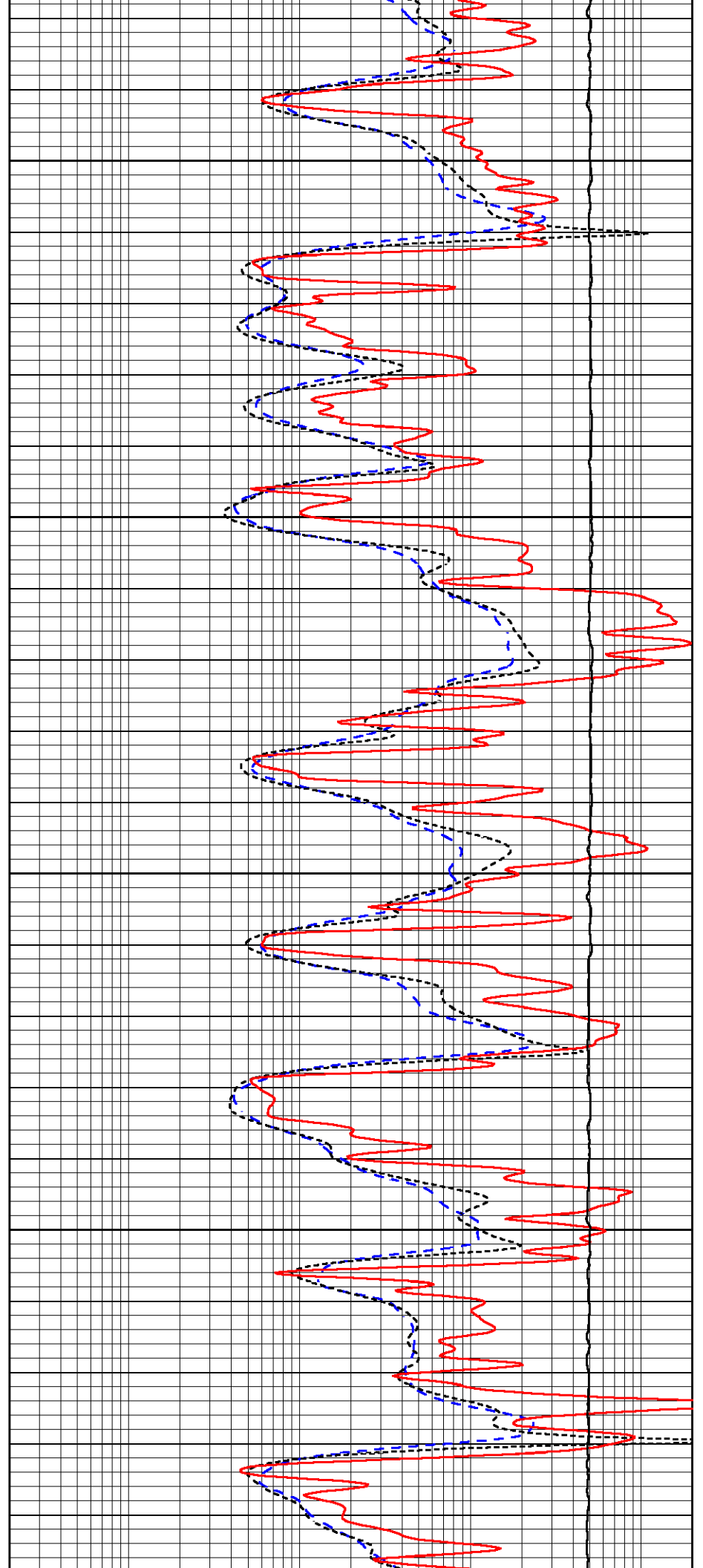


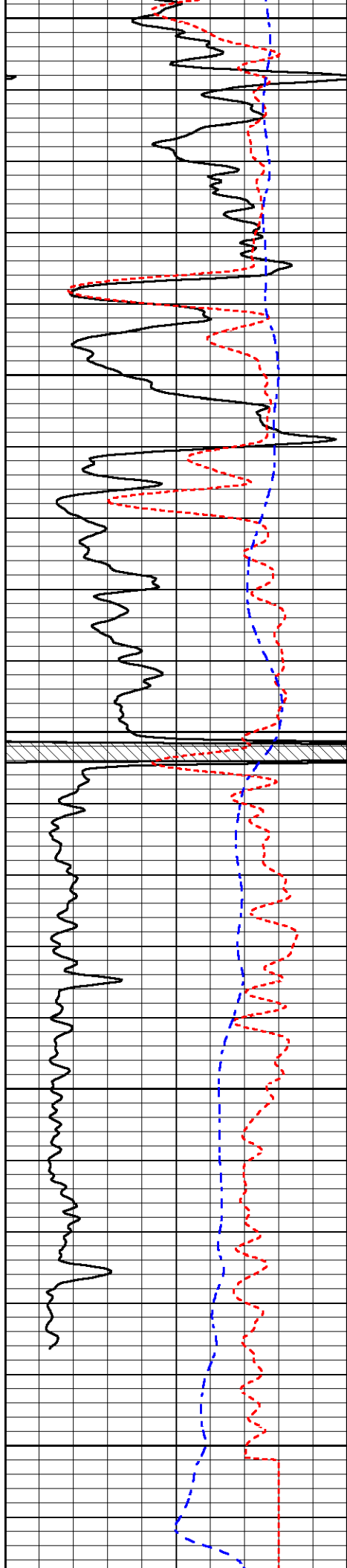
3550

3600

3650

3700





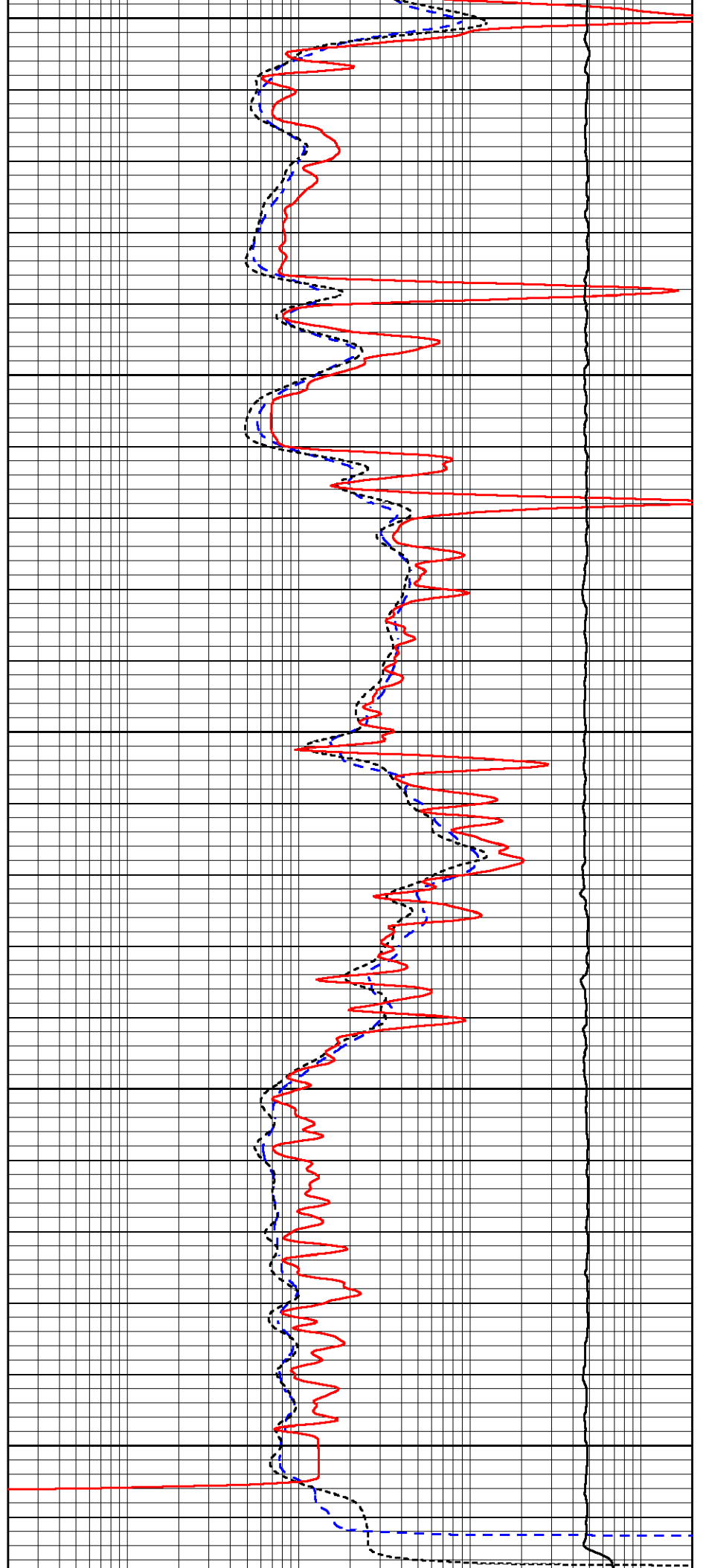
3750

3800

3850

3900

3950



0	Gamma Ray (GAPI)	150
-160	RXORT	40
-200	SP (mV)	0

0.2	Deep Resistivity (Ohm-m)	2000
0.2	Medium Resistivity (Ohm-m)	2000
0.2	RLL3 (Ohm-m)	2000
10000	Line Tension (lb)	0



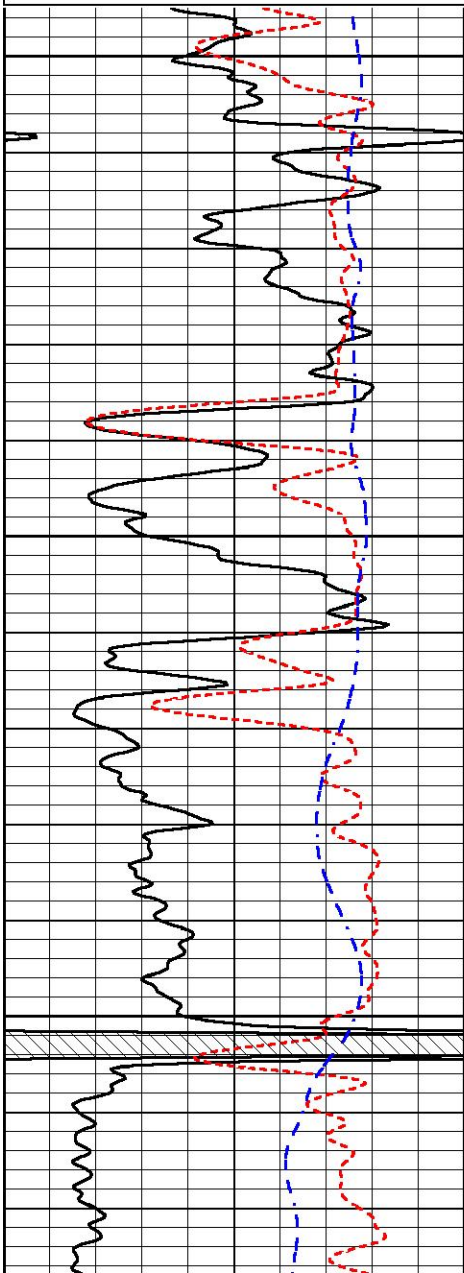
# REPEAT SECTION

## REPEAT PASS

Database File double g\_mj1 #1.db  
 Dataset Pathname Stack/pass2.1  
 Presentation Format \_dil  
 Dataset Creation Thu Mar 07 00:30:23 2024  
 Charted by Depth in Feet scaled 1:240

0	Gamma Ray (GAPI)	150
-160	RXORT	40
-200	SP (mV)	0

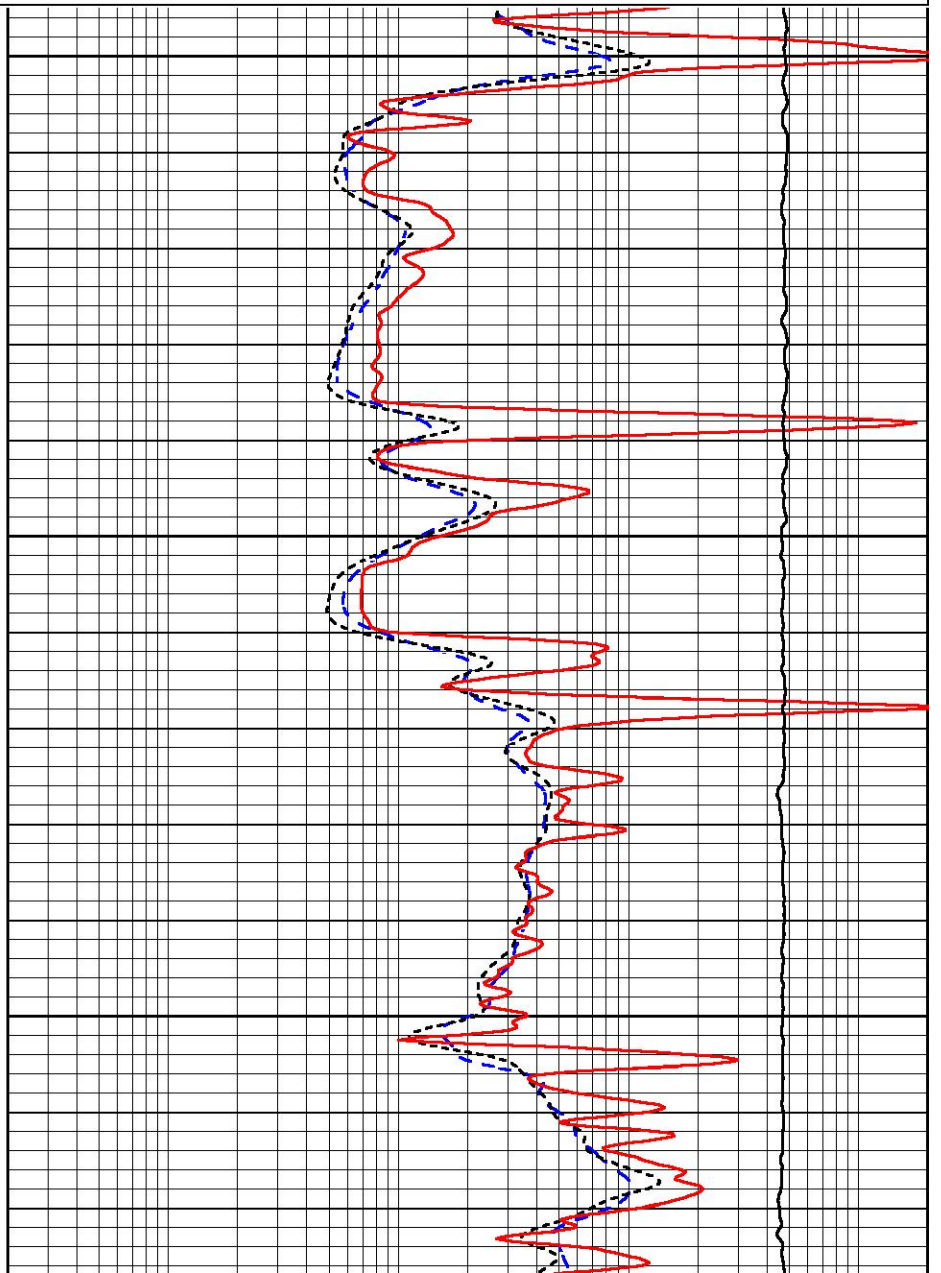
0.2	Deep Resistivity (Ohm-m)	2000
0.2	Medium Resistivity (Ohm-m)	2000
0.2	RLL3 (Ohm-m)	2000
10000	Line Tension (lb)	0

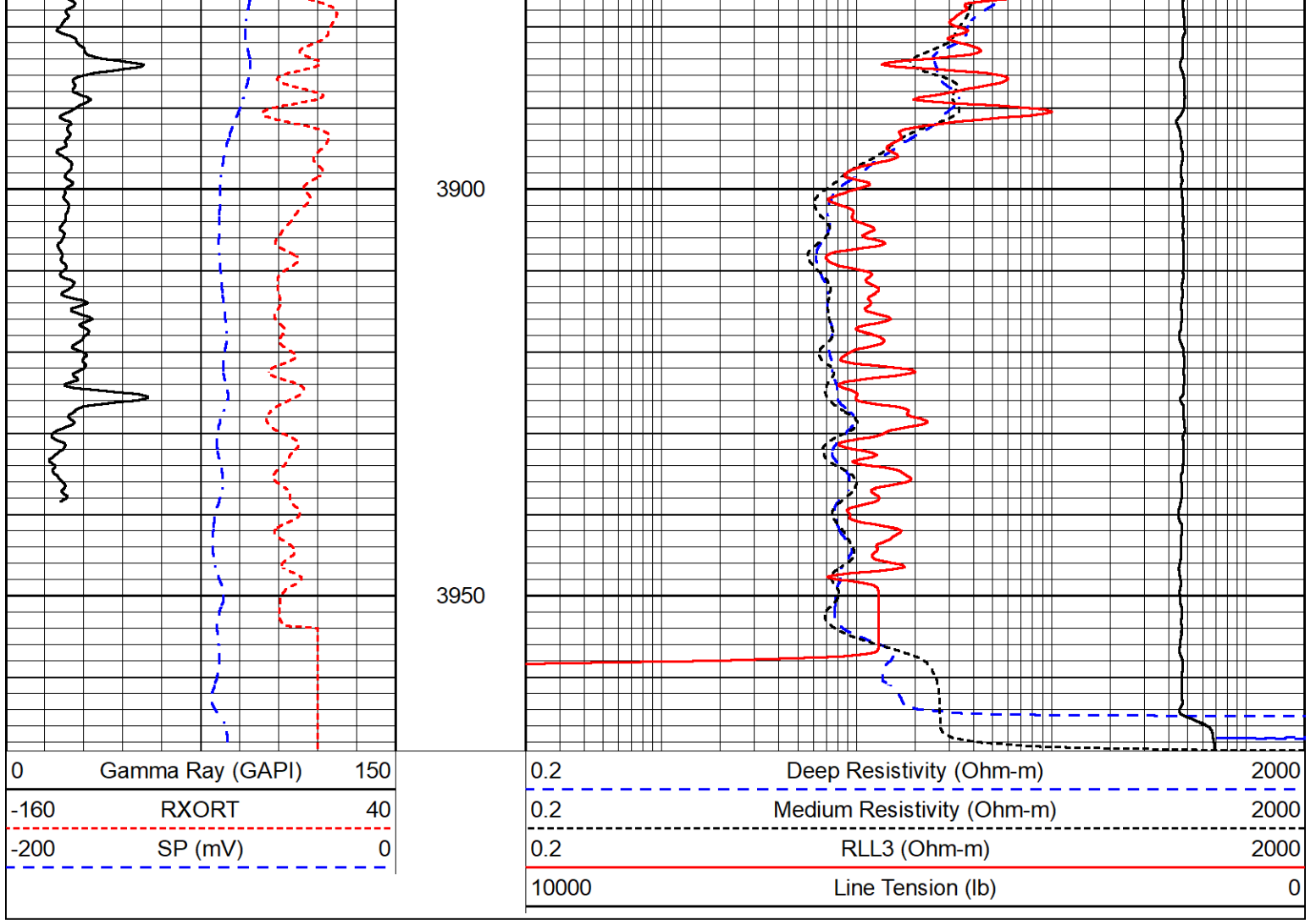


3750

3800

3850





### Calibration Report

Database File double\_g\_mj1 #1.db  
 Dataset Pathname Stack/pass3.3  
 Dataset Creation Thu Mar 07 00:30:55 2024

### Dual Induction Calibration Report

Serial-Model: 501 HT-M&W  
 Surface Cal Performed:

Loop:	Readings		References		Results	
	Air	Loop	Air	Loop	m	b
Deep	78.235	390.165	0.000	255.800 mmho/m	0.870	-63.500
Medium	37.526	515.344	0.000	255.800 mmho/m	0.500	-20.000

### Compensated Density Calibration Report

Serial-Model: 305-24-M&W  
 Source / Verifier: 20762B / 2ci  
 Master Calibration Performed: Tue Feb 6 18:43:03 2024  
 Before Survey Verification Performed:  
 After Survey Verification Performed:

### Master Calibration

Density Far Detector Near Detector

Magnesium	1.680	g/cc	5028.88	5761.57	cps
Aluminum	2.560	g/cc	1122.37	3952.02	cps

Spine Angle = 75.89

Density/Spine Ratio = 0.569

	Size		Reading	
Small Ring	4.00	in	1.74	
Large Ring	14.00	in	1.38	

**Compensated Neutron Calibration Report**

Serial Number: 207  
Tool Model: M&W

**CALIBRATION**

Detector	Readings	Target	Normalization
Short Space	6240.00 cps	1000.00 cps	1.6025
Long Space	460.00 cps	1000.00 cps	1.9500

**PRE-SURVEY VERIFICATION**

	Detector	Readings	Measured	Target
1)	Short Space	cps		
	Long Space	cps	pu	pu
2)	Short Space	cps		
	Long Space	cps	pu	
3)	Short Space	cps		
	Long Space	cps	pu	

**POST-SURVEY VERIFICATION**

	Detector	Readings	Measured	Target
1)	Short Space	cps		
	Long Space	cps	pu	pu
2)	Short Space	cps		
	Long Space	cps	pu	pu
3)	Short Space	cps		
	Long Space	cps	pu	pu

**Gamma Ray Calibration Report**

Serial Number:	102	
Tool Model:	M&W	
Performed:	Mon Sep 25 22:02:33 2023	
Calibrator Value:	1.0	GAPI
Background Reading:	0.0	cps
Calibrator Reading:	1.0	cps
Sensitivity:	0.5250	GAPI/cps



Company Double G Petro LLC  
Well MJ1 #1  
Field Keough Northeast



County	Rush
State	Kansas