



**COMPENSATED
DENSITY/NEUTRON
PE LOG**

Company BECKER OIL CORPORATION
Well S & E RANCH #1
Field LIPPOLDT
County HODGEMAN **State** KANSAS

Location: API #: 15-083-22031-0000
 1320' FSL & 330' FWL
 W2 - W2 - SW
 SEC 19 TWP 23S RGE 22W
Permanent Datum GROUND LEVEL Elevation 2371
Log Measured From KELLY BUSHING 8' A.G.L
Drilling Measured From KELLY BUSHING
Other Services
 Elevation
 K.B. 2379
 D.F. 2377
 G.L. 2371

Company	BECKER OIL CORPORATION
Well	S & E RANCH #1
Field	LIPPOLDT
County	HODGEMAN
State	KANSAS
Date	10/1/23
Run Number	ONE
Depth Driller	2766
Depth Logger	2767
Bottom Logged Interval	2765
Top Log Interval	00
Casing Driller	8 5/8" @ 222'
Casing Logger	222'
Bit Size	7 7/8
Type Fluid in Hole	CHEMICAL MUD
Density / Viscosity	9.6/50
PH / Fluid Loss	7.0/14.0
Source of Sample	FLOWLINE
Rm @ Meas. Temp	.110 @ 83F
Rmt @ Meas. Temp	.083 @ 83F
Rmc @ Meas. Temp	.132 @ 83F
Source of Rmf / Rmc	MEASUREMENT
Rm @ BHT	.087 @ 105F
Time Circulation Stopped	2 HOURS
Time Logger on Bottom	2:00 P.M.
Maximum Recorded Temperature	105F
Equipment Number	8916
Location	HAYS, KANSAS
Recorded By	COLE ROBBEN
Witnessed By	TIM HEDRICK

<<< Fold Here >>>

All interpretations are opinions based on inferences from electrical or other measurements and we cannot and do not guarantee the accuracy or correctness of any interpretation, and we shall not, except in the case of gross or willful negligence on our part, be liable or responsible for any loss, costs, damages, or expenses incurred or sustained by anyone resulting from any interpretation made by any of our officers, agents or employees. These interpretations are also subject to our general terms and conditions set out in our current Price Schedule.

Comments

THANK YOU FOR USING ELI WIRELINE SERVICES, HAYS, KS. (785) 628-6395

DIRECTIONS:

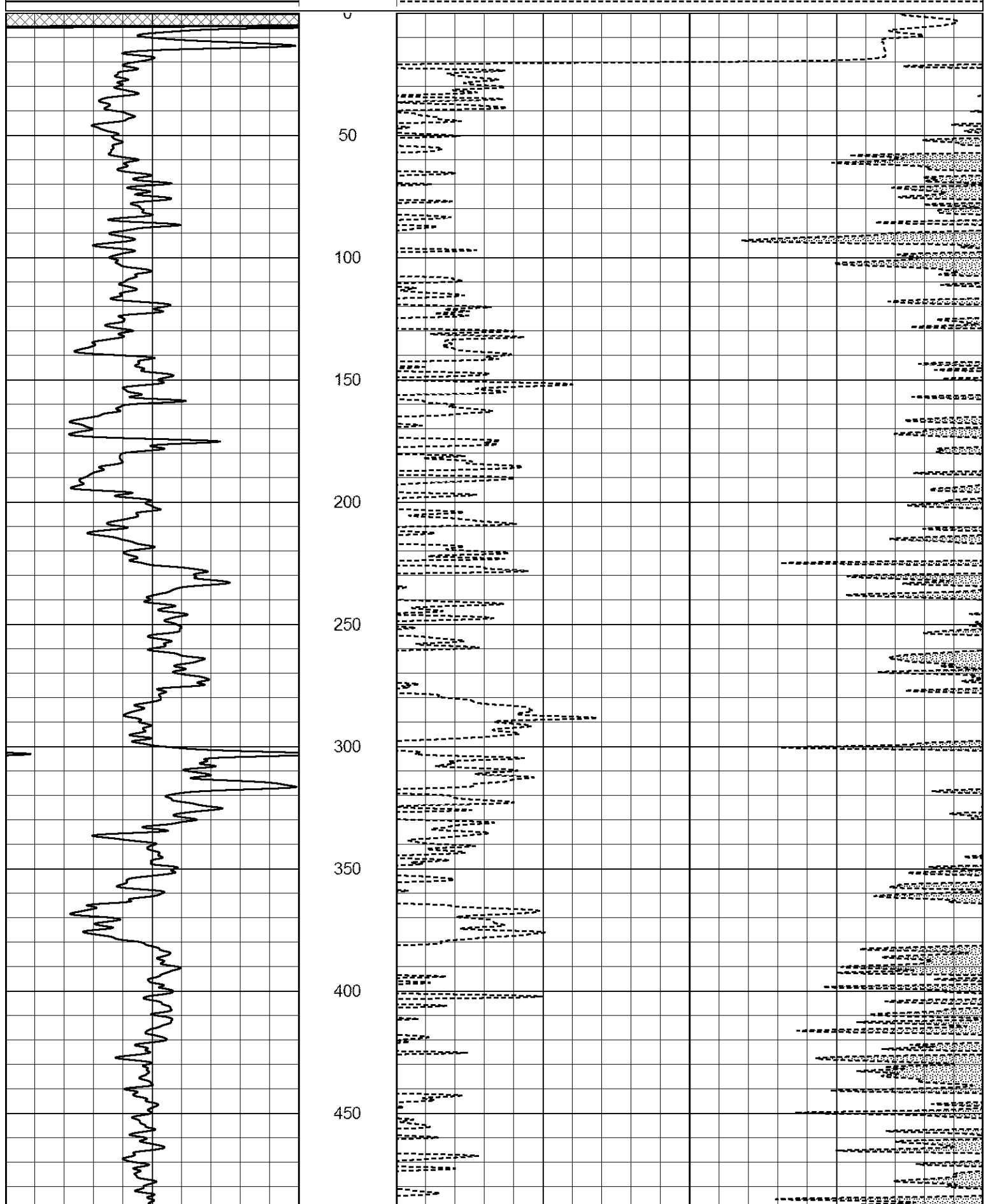
FROM JETMORE, KANSAS GO 6 MILES EAST ON HIGHWAY 156 TO 224 ROAD, 4 MILES SOUTH, EAST INTO

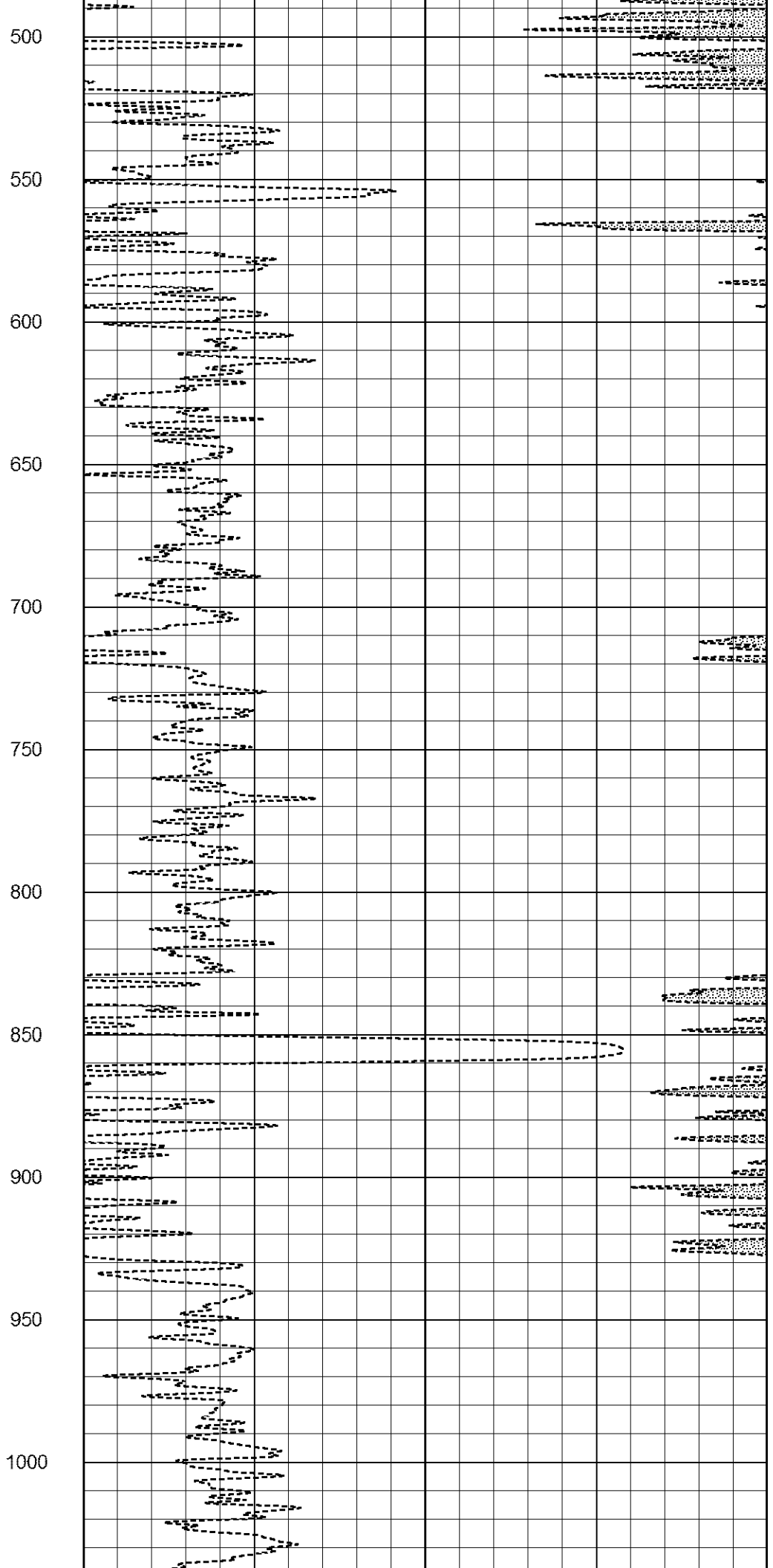
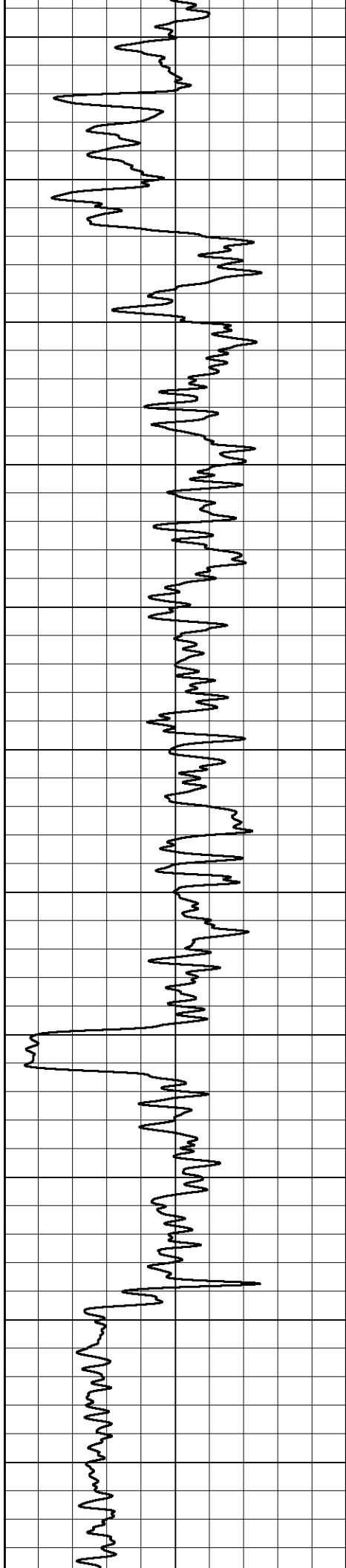


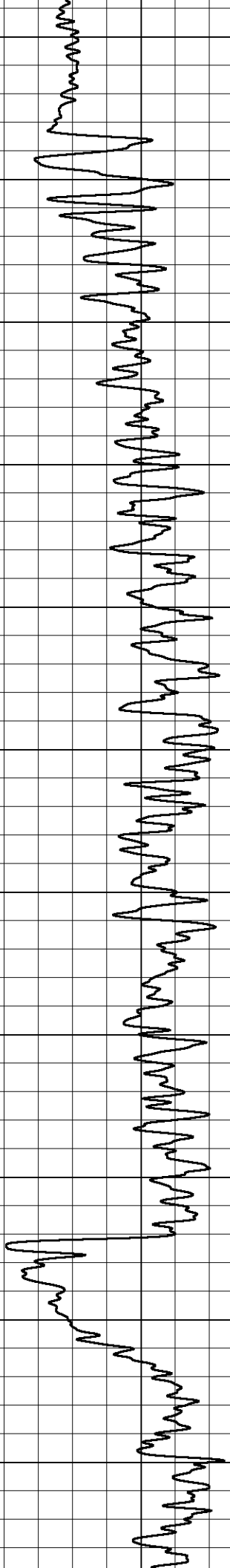
MAIN SECTION

Database File 8356pe.db
Dataset Pathname pass3CR
Presentation Format _ldt_neu
Dataset Creation Sun Oct 01 15:30:51 2023
Charted by Depth in Feet scaled 1:600

0 GAMMA RAY (GAPI) 150 30 COMPENSATED NEUTRON (pu) -10







1050

1100

1150

1200

1250

1300

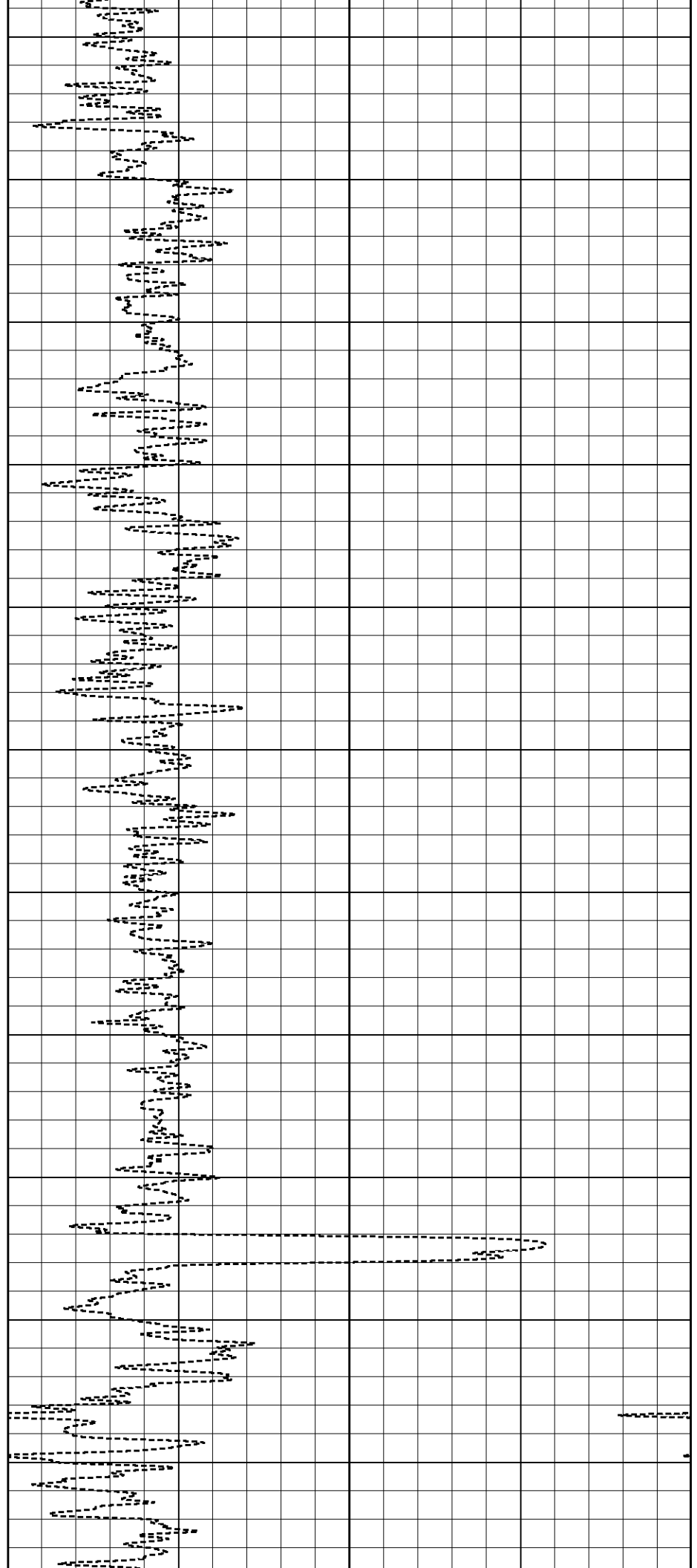
1350

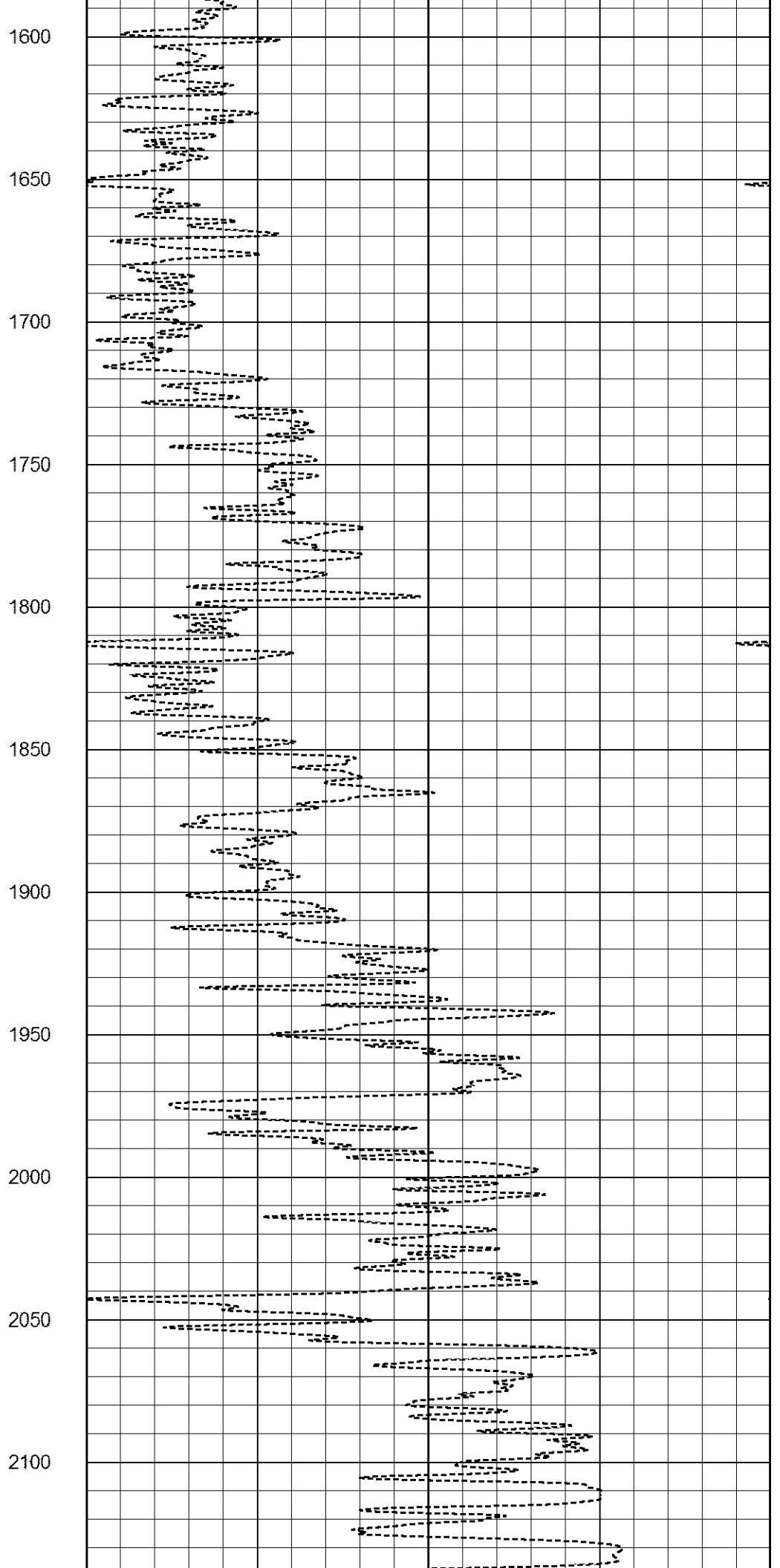
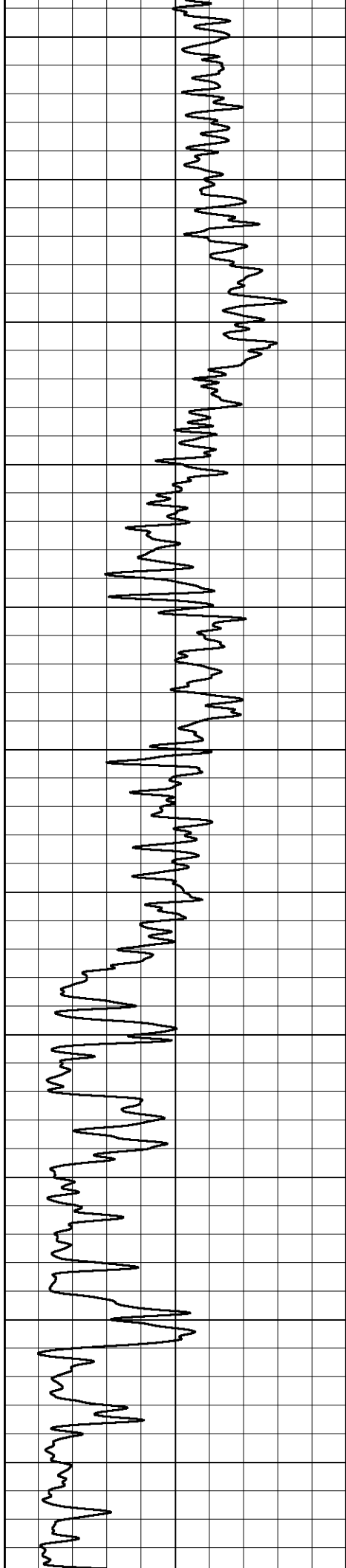
1400

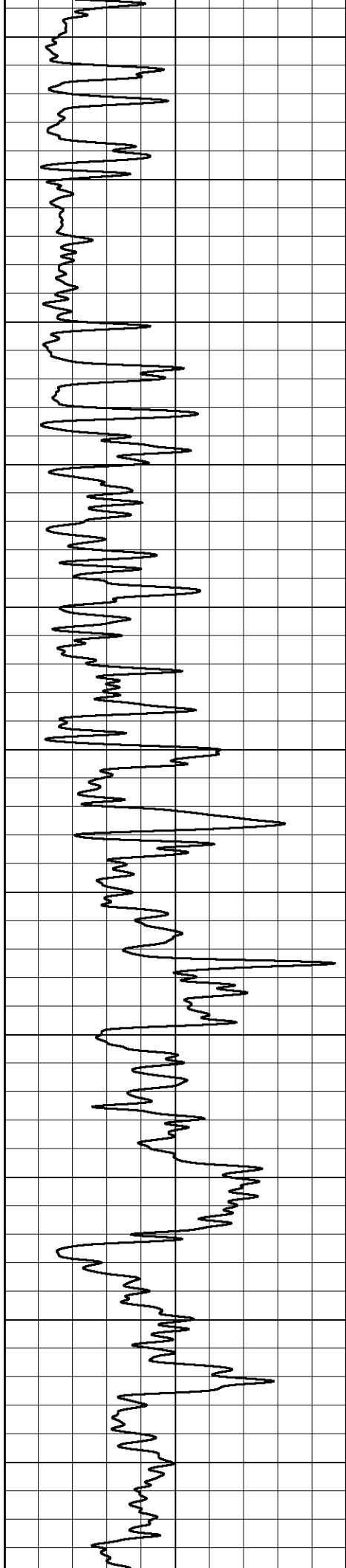
1450

1500

1550







2150

2200

2250

2300

2350

2400

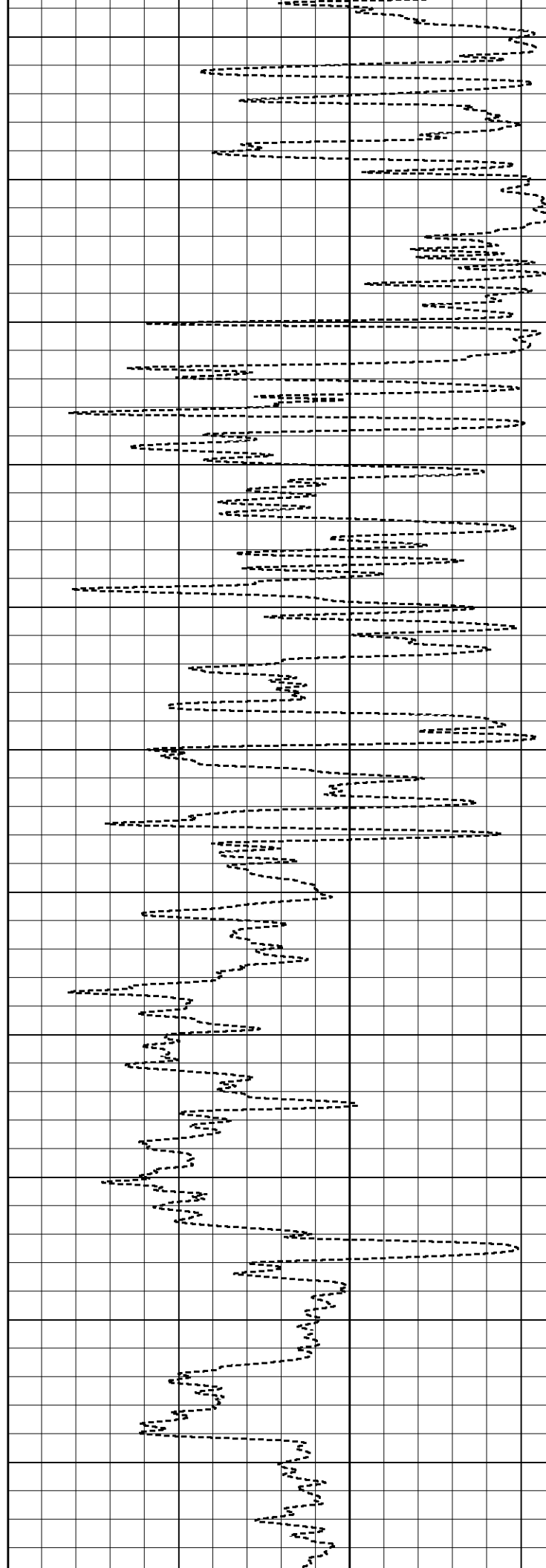
2450

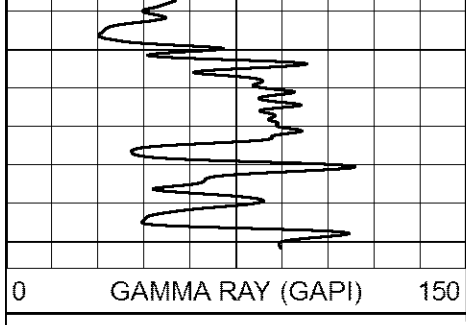
2500

2550

2600

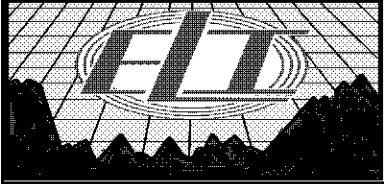
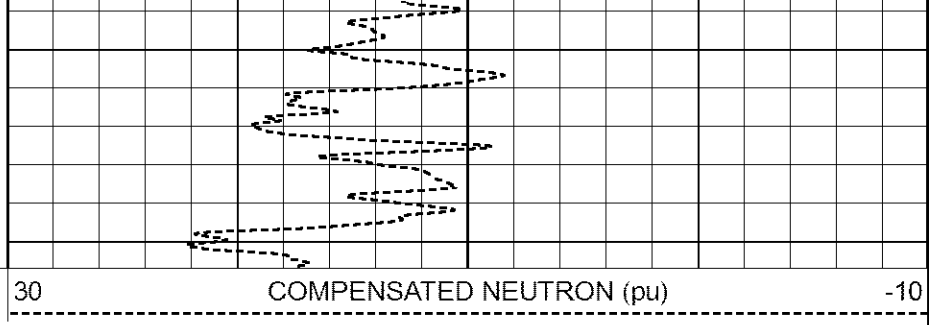
2650





2700

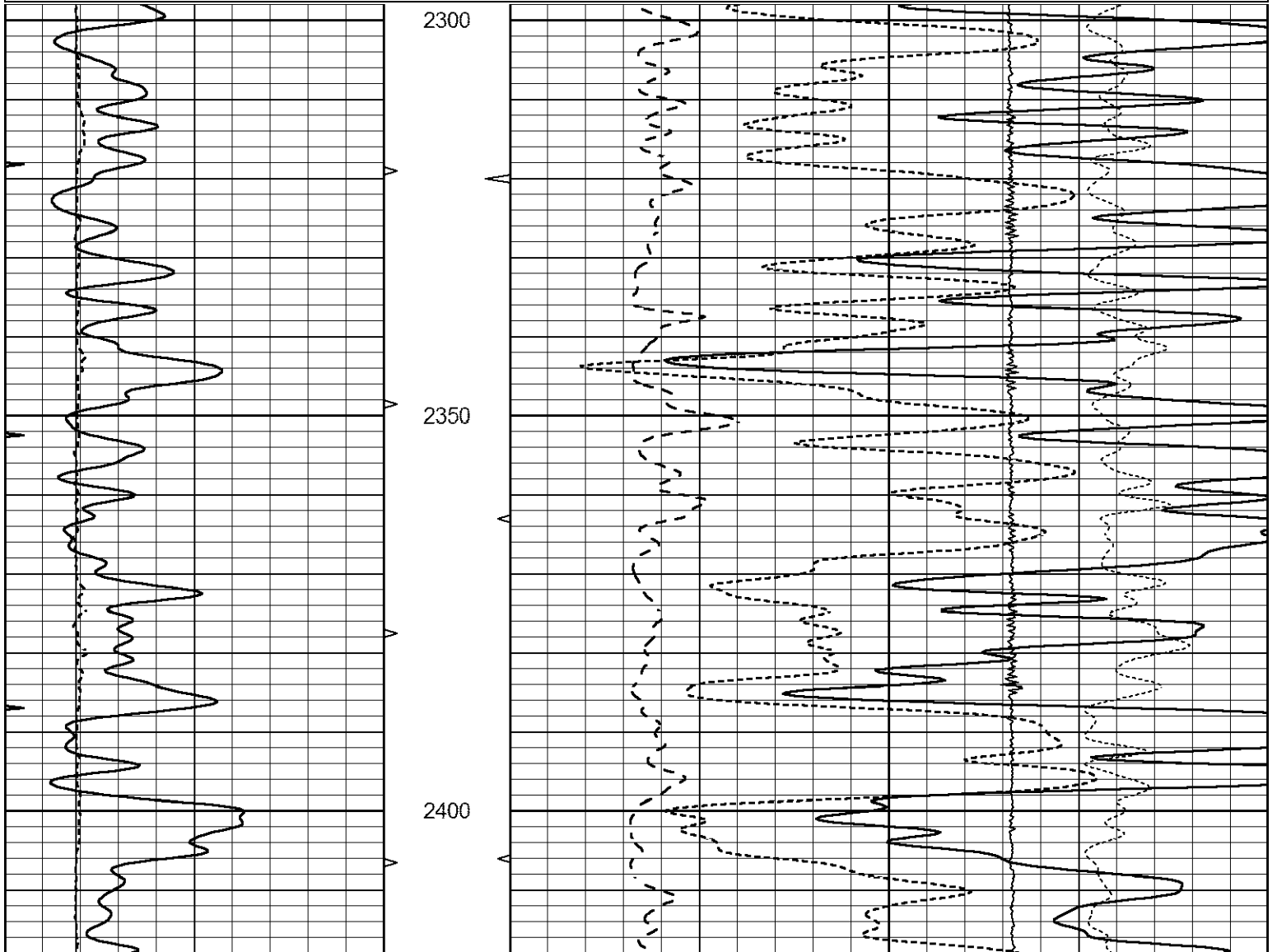
2750

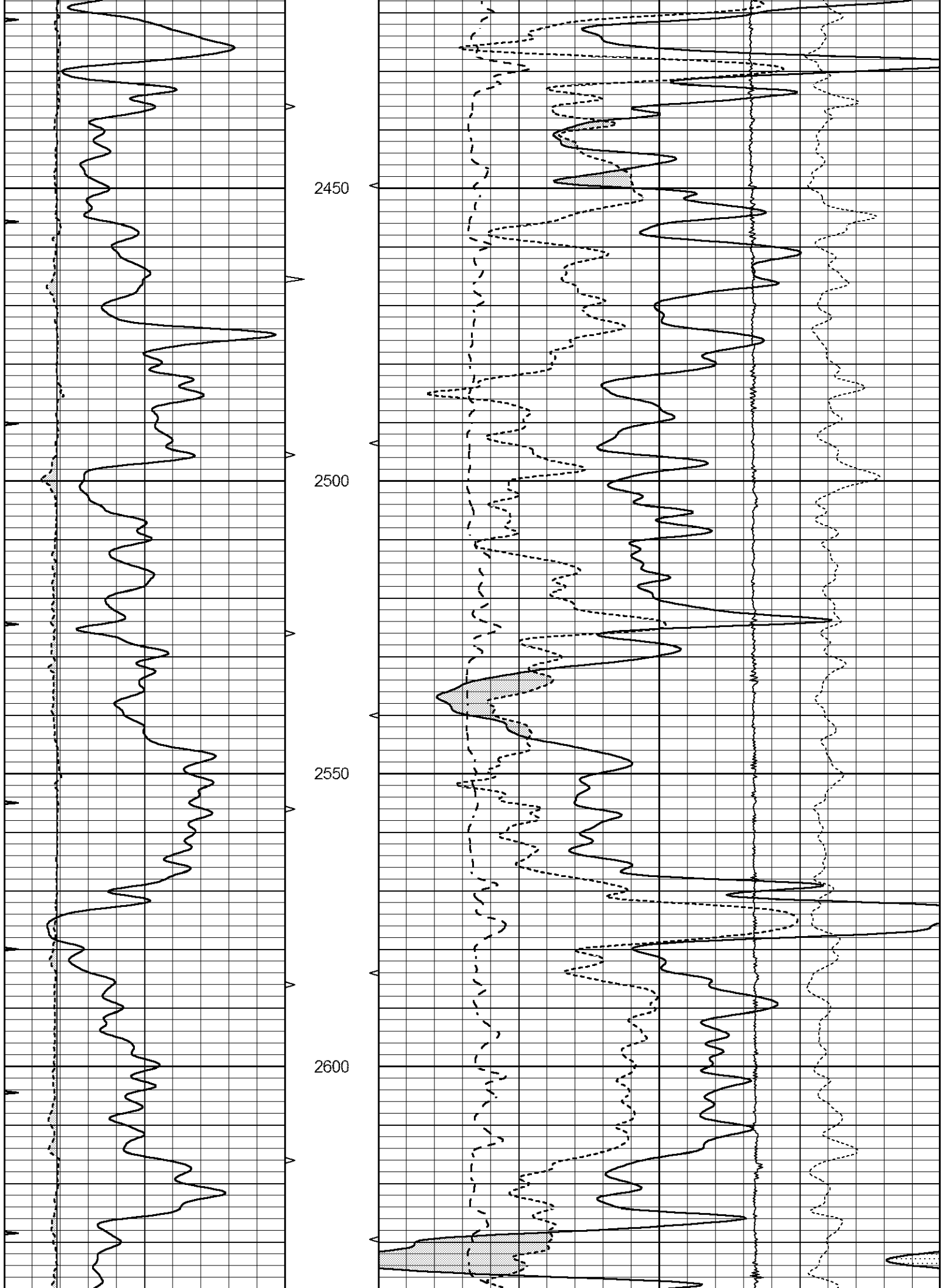


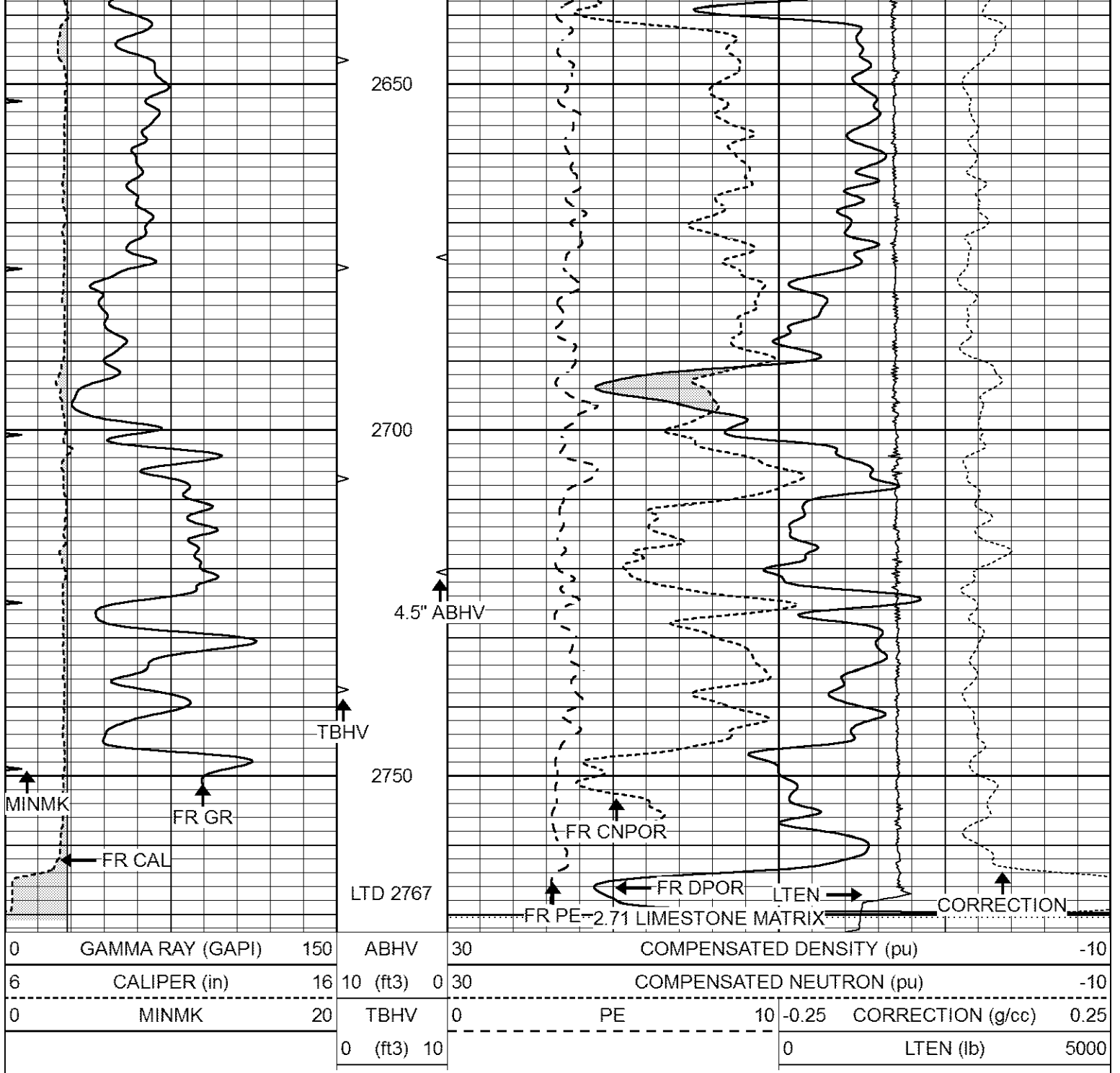
MAIN SECTION

Database File 8356pe.db
 Dataset Pathname pass3.7
 Presentation Format _ldt_neu
 Dataset Creation Sun Oct 01 14:39:35 2023
 Charted by Depth in Feet scaled 1:240

0	GAMMA RAY (GAPI)	150	ABHV	30	COMPENSATED DENSITY (pu)	-10			
6	CALIPER (in)	16	10 (ft3)	0	30	COMPENSATED NEUTRON (pu)	-10		
0	MINMK	20	TBHV	0	PE	10	-0.25 CORRECTION (g/cc)	0.25	
			0 (ft3)	10			0	LTEN (lb)	5000



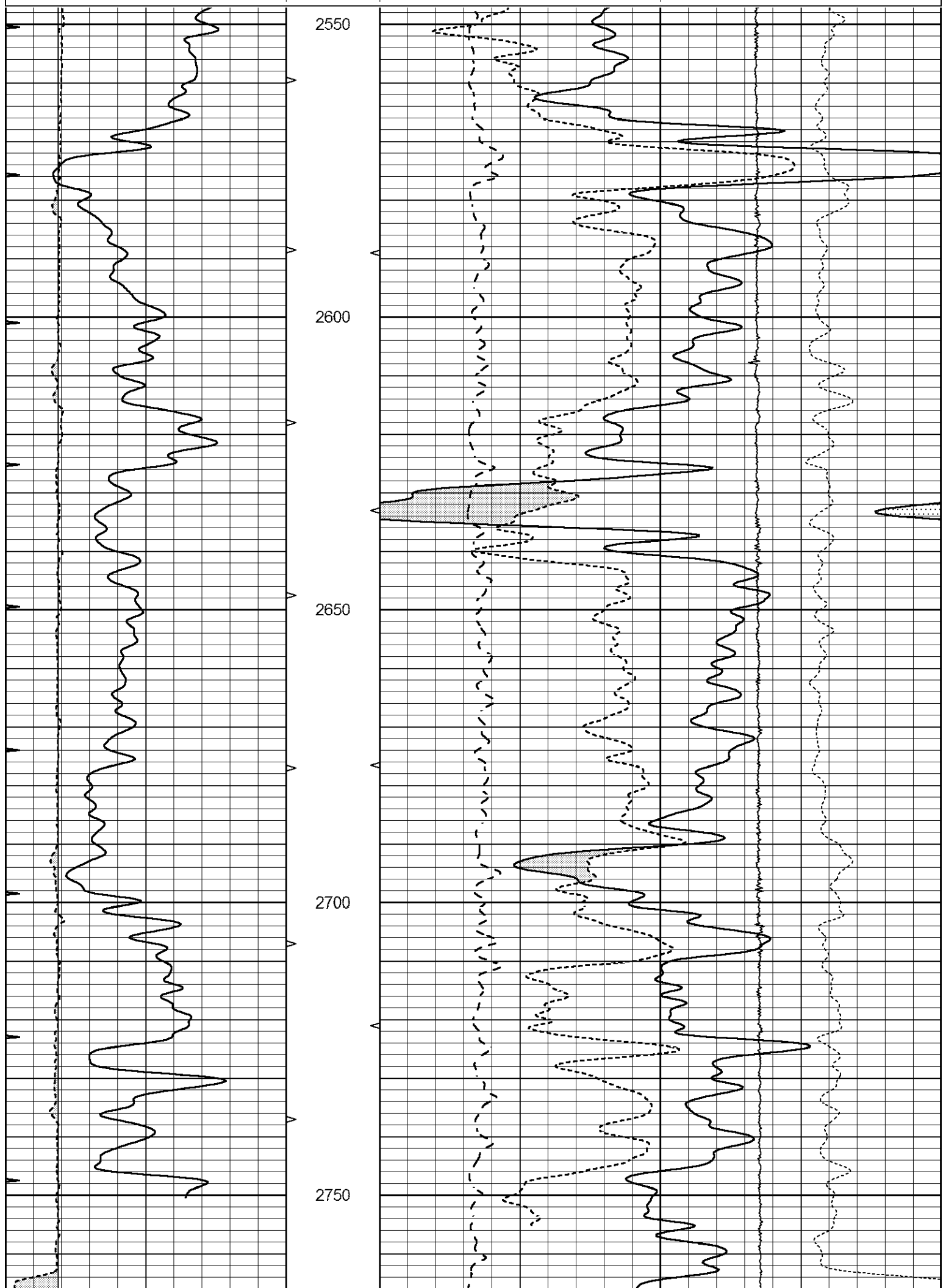




REPEAT SECTION

Database File 8356pe.db
 Dataset Pathname pass2.5
 Presentation Format _ldt_neu
 Dataset Creation Sun Oct 01 14:23:43 2023
 Charted by Depth in Feet scaled 1:240

0	GAMMA RAY (GAPI)	150	ABHV	30	COMPENSATED DENSITY (pu)	-10
6	CALIPER (in)	16	10 (ft3)	0 30	COMPENSATED NEUTRON (pu)	-10
0	MINMK	20	TBHV	0	PE	10 -0.25 CORRECTION (g/cc) 0.25
			0 (ft3)	10		0 LTEN (lb) 5000



0	GAMMA RAY (GAPI)	150	ABHV	30	COMPENSATED DENSITY (pu)			-10
6	CALIPER (in)	16	10 (ft3) 0	30	COMPENSATED NEUTRON (pu)			-10
0	MINMK	20	TBHV	0	PE	10	-0.25	CORRECTION (g/cc) 0.25
			0 (ft3) 10				0	LTEN (lb) 5000

Calibration Report

Database File 8356pe.db
 Dataset Pathname pass3.8
 Dataset Creation Sun Oct 01 15:20:44 2023

Litho Density Calibration Report Serial: 003 Model: PRB

Master Calibration

Performed Mon May 22 11:42:40 2023

	Background	Magnesium	Aluminum	Aluminum+Fe	
Window 1	1512.3	7465.7	2749.0	2519.6	cps
Window 2	1398.8	6705.7	2507.3	2313.8	cps
Window 3	1289.2	5259.5	2124.1	2009.6	cps
Window 4	351.1	351.6	351.8	353.2	cps
Long Space	0.0	5306.9	1108.5	915.0	cps
Short Space	3.3	2239.9	1441.2	1212.0	cps
Rho		1.7100	2.5900	0.0000	g/cc
Pe		2.0000	2.7500	5.7900	
Rib Angle	: 44.3	Rib Slope	: 0.975	Density/Spine Ratio	: 0.541
Spine Angle	: 74.3	Spine Slope	: 3.551	Spine Intercept	: -18.8

Before Survey Verification

Performed Wed Dec 31 18:00:00 1969

Window 1	0.0	0.0	0.0	0.0	cps
Window 2	0.0	0.0	0.0	0.0	cps
Window 3	0.0	0.0	0.0	0.0	cps
Window 4	0.0	0.0	0.0	0.0	cps
Long Space	0.0	0.0	0.0	0.0	cps
Short Space	0.0	0.0	0.0	0.0	cps
Measured Rho		0.0000	0.0000	0.0000	g/cc
Measured Correction		0.0000	0.0000	0.0000	g/cc
Measured Pe			0.0000	0.0000	

After Survey Verification

Performed Wed Dec 31 18:00:00 1969

Window 1	0.0	0.0	0.0	0.0	cps
Window 2	0.0	0.0	0.0	0.0	cps
Window 3	0.0	0.0	0.0	0.0	cps
Window 4	0.0	0.0	0.0	0.0	cps
Long Space	0.0	0.0	0.0	0.0	cps
Short Space	0.0	0.0	0.0	0.0	cps
Measured Rho		0.0000	0.0000	0.0000	g/cc
Measured Correction		0.0000	0.0000	0.0000	g/cc
Measured Pe			0.0000	0.0000	

Compensated Neutron Calibration Report

Serial Number:
Tool Model:

080621PMC
NABORS

PRE-SURVEY VERIFICATION

Detector	Readings	Measured	Target
Short Space	cps		
Long Space	cps	pu	pu

POST-SURVEY VERIFICATION

Detector	Readings	Measured	Target
Short Space	cps		
Long Space	cps	pu	pu

Gamma Ray Calibration Report

Serial Number:	46001	
Tool Model:	Probe1	
Performed:	Thu Apr 20 09:55:57 2023	
Calibrator Value:	1.0	GAPI
Background Reading:	0.0	cps
Calibrator Reading:	1.0	cps
Sensitivity:	0.4300	GAPI/cps