



MIDWEST WIRELINE

# MICRORESISTIVITY

Company M3 Helium Corporation  
 Well Smith C #2  
 Field Hugoton  
 County Haskell State Kansas

Location: API #: 15-081-22267-00-00  
 NW  
 1320 FNL & 1320 FWL  
 SEC 3 TWP 28S RGE 33W  
 Permanent Datum Ground Level Elevation 2985  
 Log Measured From Kelly Bushing  
 Drilling Measured From Kelly Bushing  
 Other Services  
 CNL/CDL  
 DIL  
 Elevation  
 K.B. 2992  
 D.F.  
 G.L. 2985

Date	11/10/2023
Run Number	One
Depth Driller	2972
Depth Logger	2974
Bottom Logged Interval	2973
Top Log Interval	1900
Casing Driller	8.625 @ 717
Casing Logger	7.18
Bit Size	7.875
Type Fluid in Hole	Chemical
Salinity, ppm CL	10000
Density / Viscosity	8.8 48
pH / Fluid Loss	10.5 10.4
Source of Sample	Flowline
Rm @ Meas. Temp	0.6 @ 68
Rmt @ Meas. Temp	0.45 @ 68
Rmc @ Meas. Temp	0.81 @ 68
Source of Rmf / Rmc	Charts
Rm @ BHT	0.39 @ 106
Operating Rig Time	2 Hours
Max Rec. Temp. F	106
Equipment Number	P-24
Location	Hays
Recorded By	T. Martin
Witnessed By	Brad Parker

<<< Fold Here >>>

All interpretations are opinions based on inferences from electrical or other measurements and Midwest Wireline LLC cannot and does not guarantee the accuracy or correctness of any interpretation, and Midwest Wireline LLC will not be liable or responsible for any loss, costs, damages, or expenses incurred or sustained by anyone resulting from any interpretation made by any of our officers, agents or employees.

### Comments

N/A DENOTES NOT AVAILABLE OR NON-APPLICABLE.

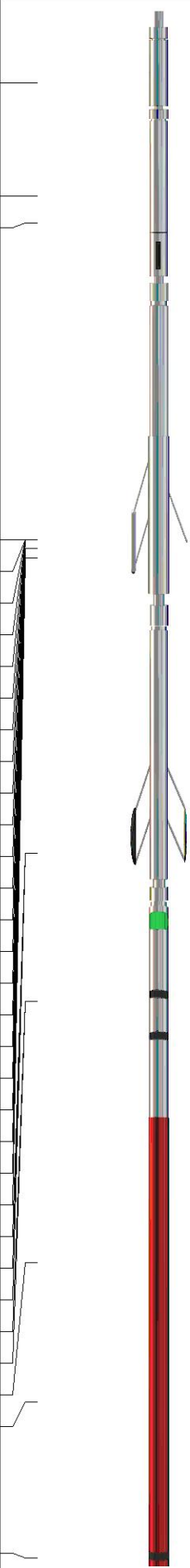
Garden City, KS, S on Hwy 83  
 to Rd 70, 2.75 W, S into

Log Measured From: Kelly Bushing 7 Ft. Above Permanent Datum

THANK YOU FOR USING MIDWEST WIRELINE LLC  
 785-625-3858

Your Midwest Wireline Crew		This Log Record Was Witnessed By	
Engineer: T. Martin	Operator:	Primary Witness: Brad Parker	Secondary Witness:
Operator:	Operator:	Secondary Witness:	Secondary Witness:
Operator:		Secondary Witness:	

Company	Offset (ft)	Depth	Description	Length (ft)	C.D. (in)	Weight (lb)
---------	-------------	-------	-------------	-------------	-----------	-------------

Sensor	Offset (ft)	Schematic	Description	Length (ft)	O.D. (in)	Weight (lb)	
GR	40.75		GR-M&W (102)	3.00	3.50	50.00	
CNLSC CNSSC	37.65 36.90		CNT-M&W (207)	5.00	3.50	100.00	
				MWLith-STEP LITHO (704-10) Long Litho Mandrel	8.92	5.00	250.00
LCAL	28.21						
LLW8N	28.21						
LLW7N	28.21						
LLW6N	28.21						
LLW5N	28.21						
LLW4N	28.21						
LLW3N	28.21						
LLW2N	28.21			ML-PSIML (401)	7.58	4.00	65.00
LLW1N	28.21						
LSLOCK	27.96						
LLLOCK	27.96						
PELTMPR	27.96						
LSHVNG	27.96						
LLHVNG	27.96						
LSW8N	27.71						
LSW7N	27.71						
LSW6N	27.71						
LSW5N	27.71						
LSW4N	27.71						
LSW3N	27.71						
LSW2N	27.71						
LSW1N	27.71						
MCAL	19.58		DIL-M&W (507)	18.25	3.50	220.00	
MI	19.58						
MN	19.58						
RLL3F	15.50						
RLL3	15.50						
CILD	8.33						
CILM	4.50						
SP	0.20						

Dataset: m3 helium\_smith c #2.db: field/well/StkMI/pass3.1  
 Total length: 42.75 ft  
 Total weight: 685.00 lb  
 O.D.: 5.00 in

# Log Variables

DatabaseC:\ProgramData\Warrior\Data\m3 helium\_smith c #2.db  
 Dataset field/well/StkMI/pass3.1/\_vars\_

## Top - Bottom

BOREID in 7.875	BOTTEMP degF 106	CASEOD in 4.5	CASETHCK in 0	FLUIDDEN g/cc 1	MATRXDEN g/cc 2.71	NPORSEL Limestone	PERFS No
SNDERR mmho/m 2	SNDERRM mmho/m 0	SPSHIFT mV 260	SRFTEMP degF 50	SZCOR Off	TDEPTH ft 2974		

## Variable Description

BOREID : Borehole I.D.  
 BOTTEMP : Bottom Hole Temperature  
 CASEOD : Casing O.D.  
 CASETHCK : Casing Thickness  
 FLUIDDEN : Fluid Density  
 MATRXDEN : Matrix Density  
 NPORSEL : Neutron Porosity Curve Select

PERFS : Perforation Flag  
 SNDERR : Deep Sonde Error Correction  
 SNDERRM : Medium Sonde Error Correction  
 SPSHIFT : S.P. Baseline Offset  
 SRFTEMP : Surface Temperature  
 SZCOR : CN Size Cor. ?  
 TDEPTH : Total Depth



MIDWEST WIRELINE

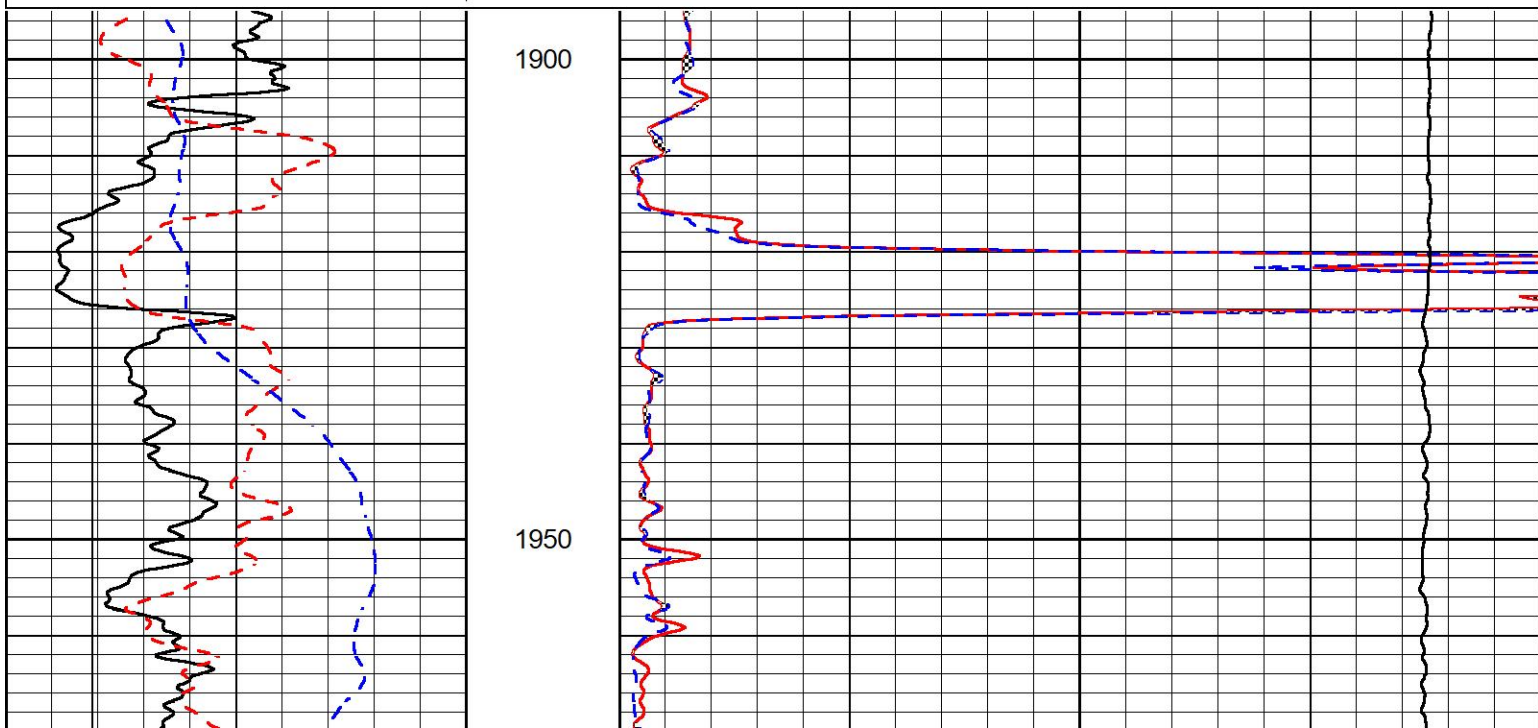
## DETAIL SECTION

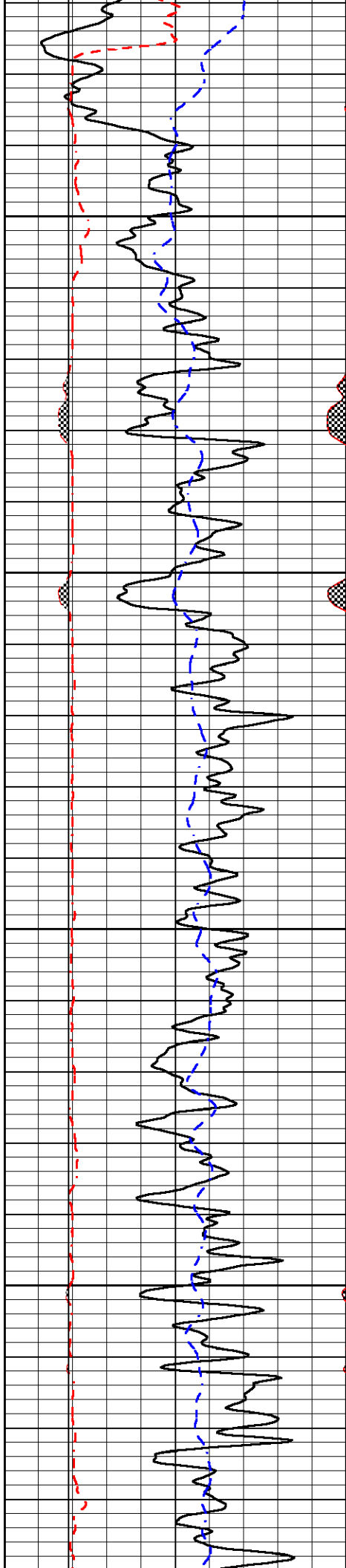
### MAIN PASS

Database File m3 helium\_smith c #2.db  
 Dataset Pathname StkMI/pass3.1  
 Presentation Format \_micro  
 Dataset Creation Fri Nov 10 23:33:19 2023  
 Charted by Depth in Feet scaled 1:240

0	GR (GAPI)	150
6	Caliper (in)	16
2.875	mcal (in)	7.875
-200	sp (mV)	0

0	Micro Inverse 1 X 1 (Ohm-m)	40
0	Micro Normal 2" (Ohm-m)	40
10000	Line Weight (lb)	0



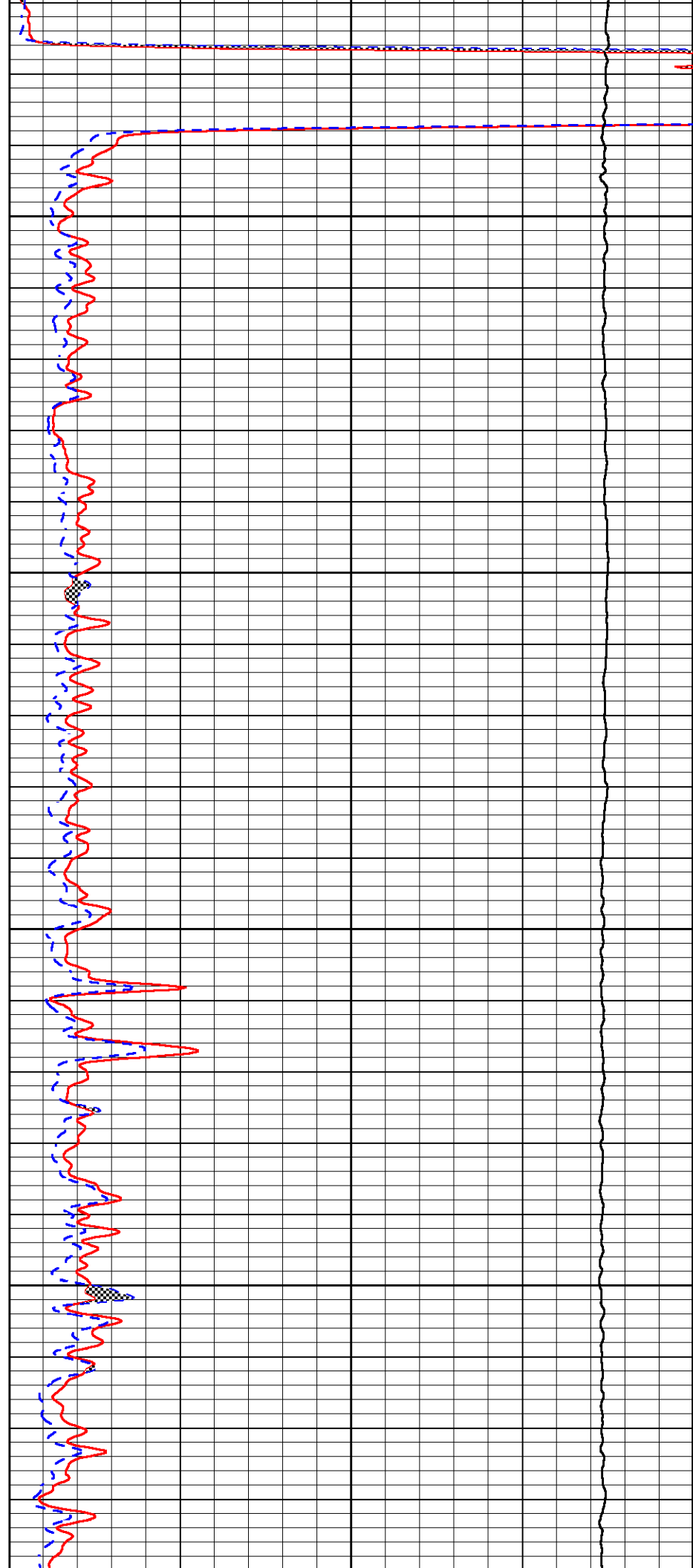


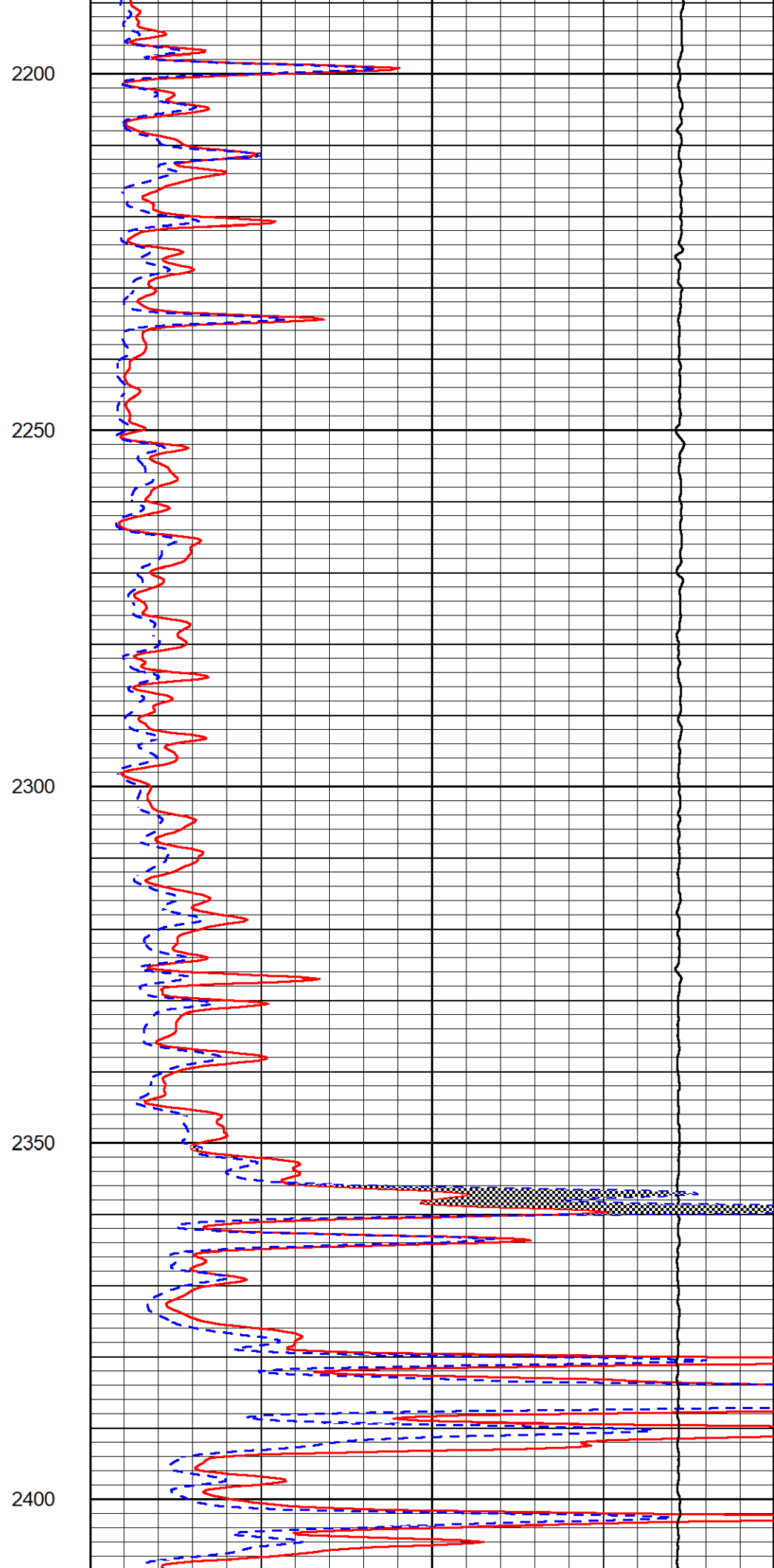
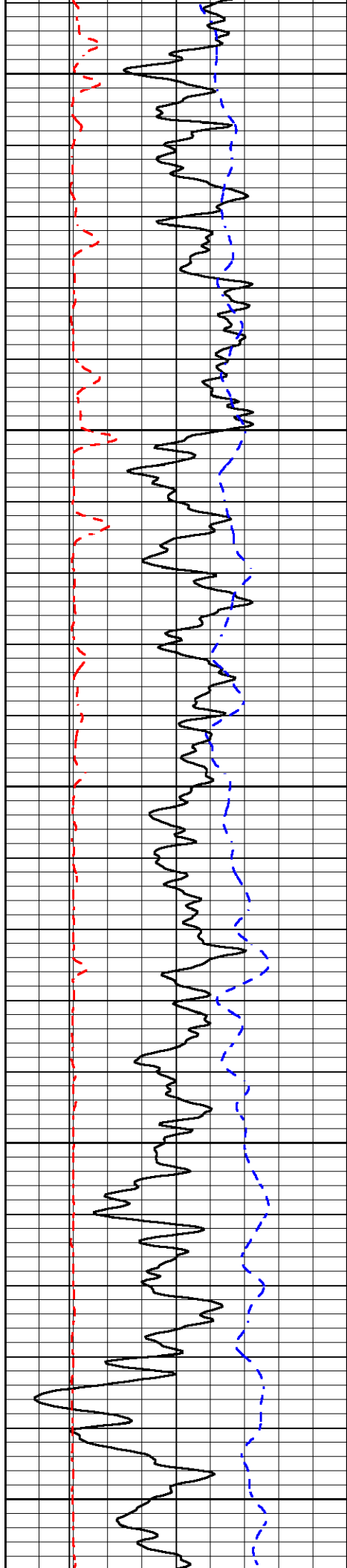
2000

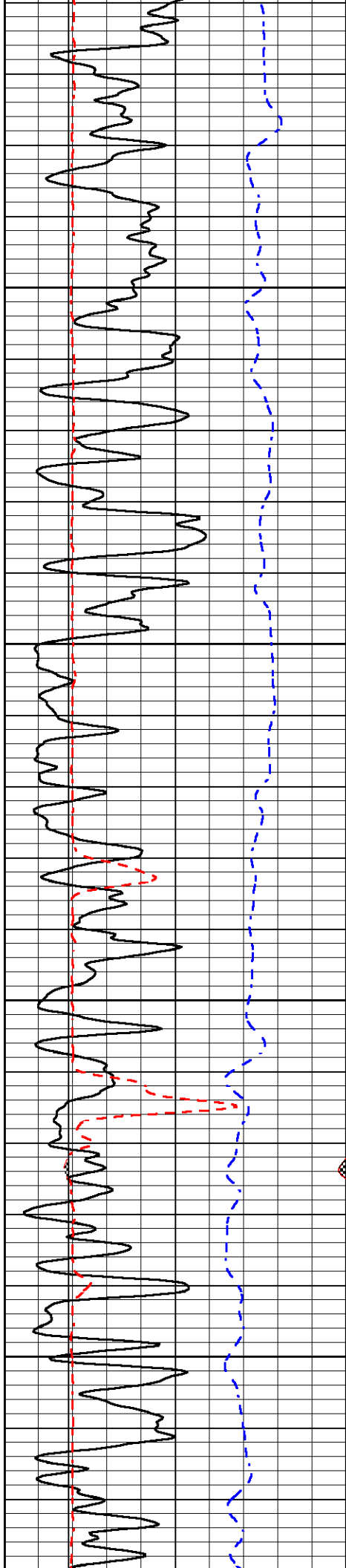
2050

2100

2150





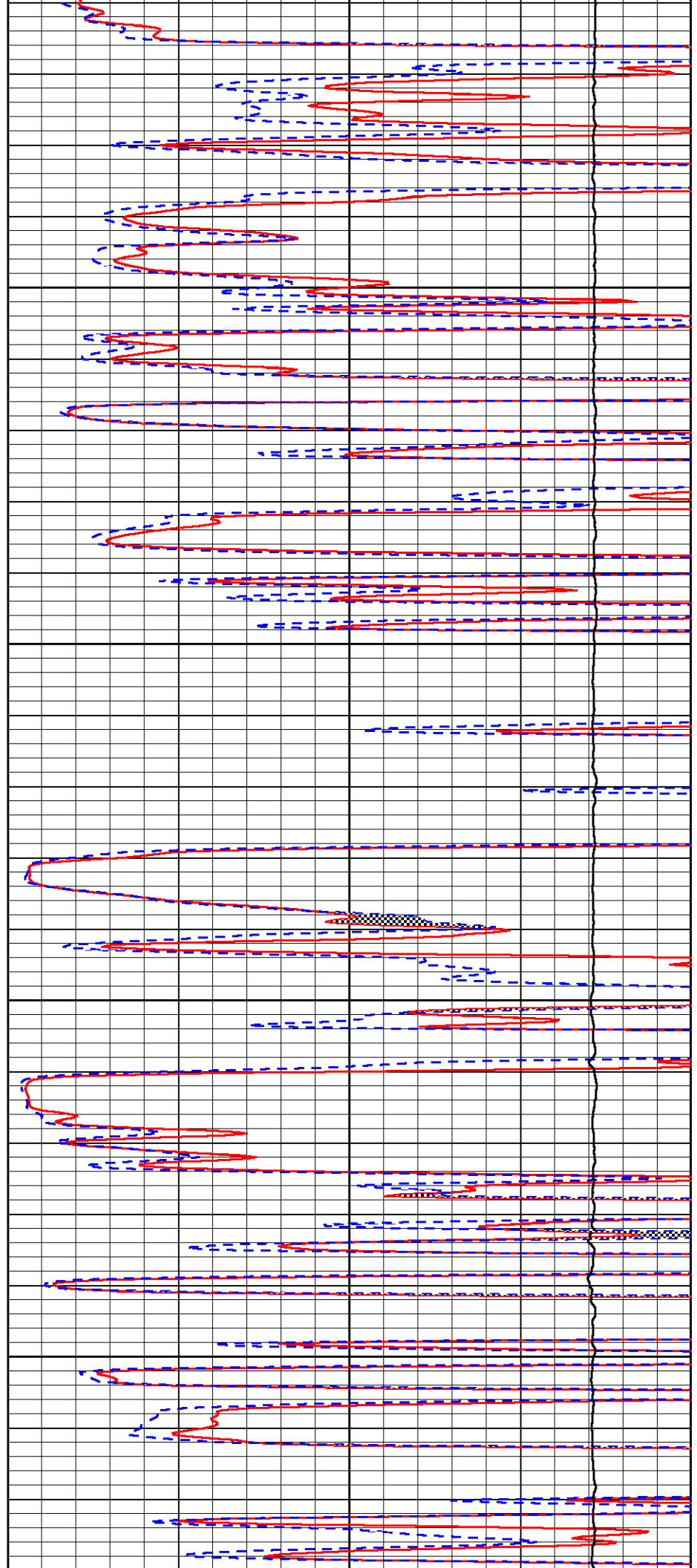


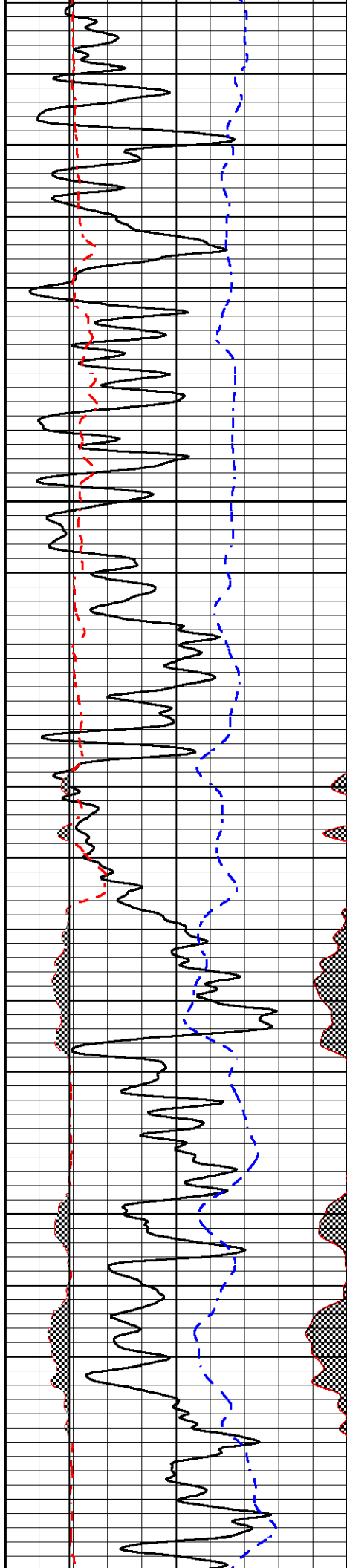
2450

2500

2550

2600





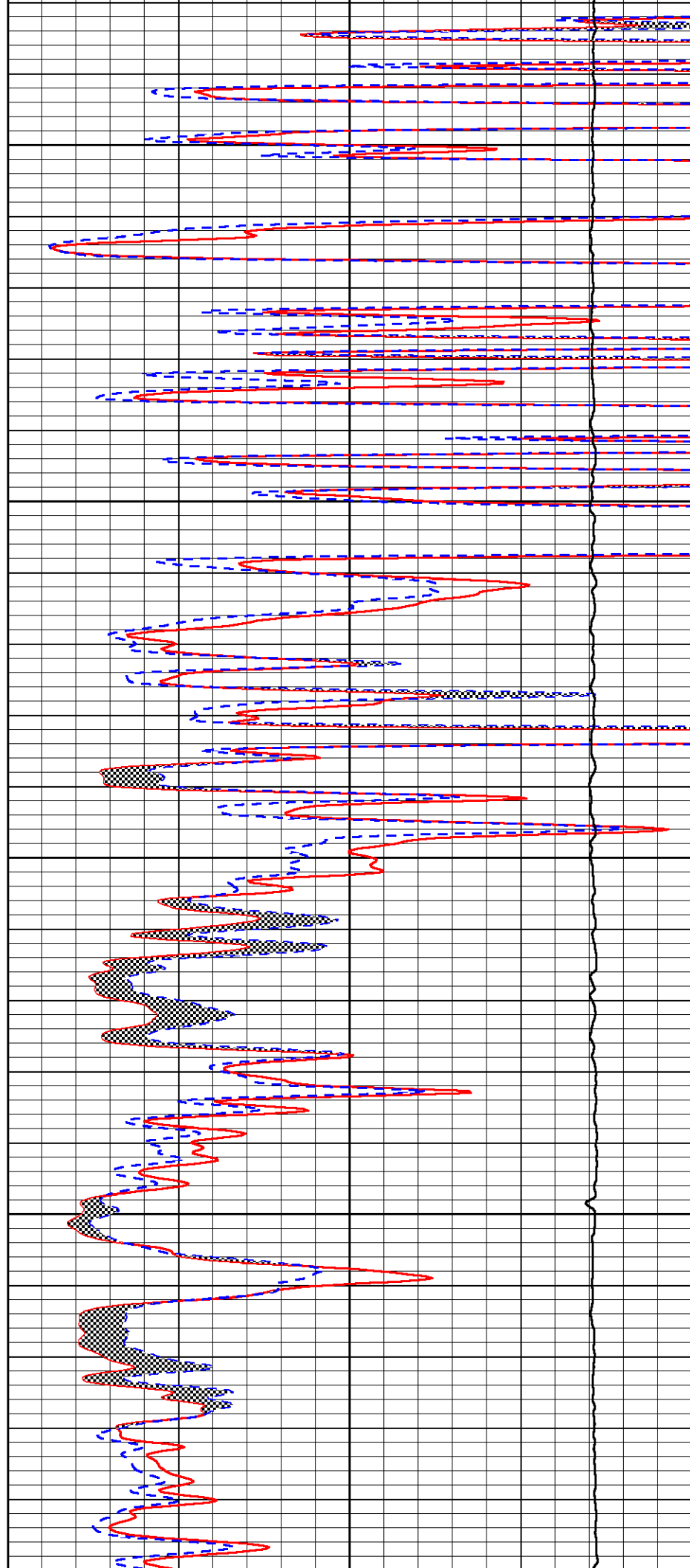
2650

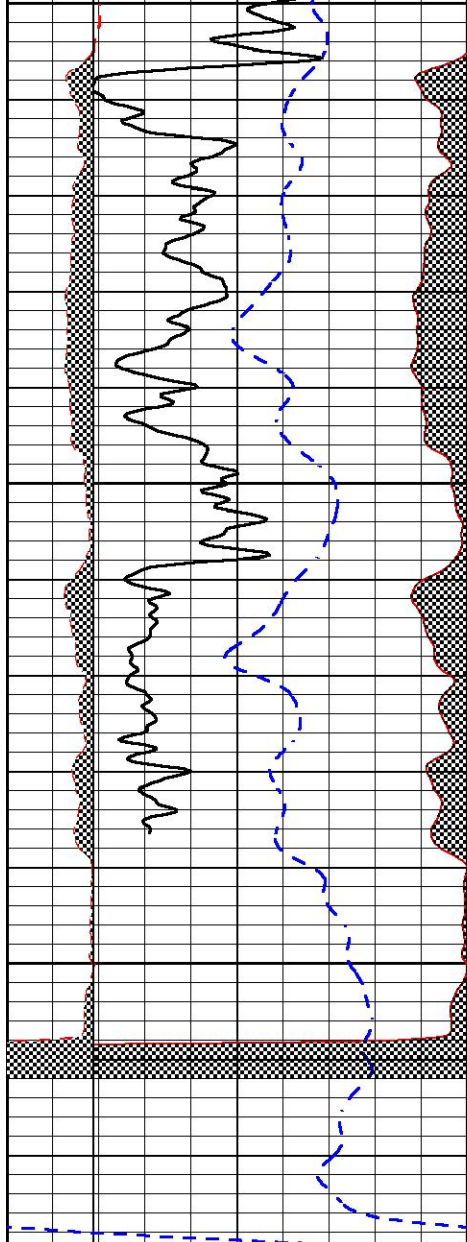
2700

2750

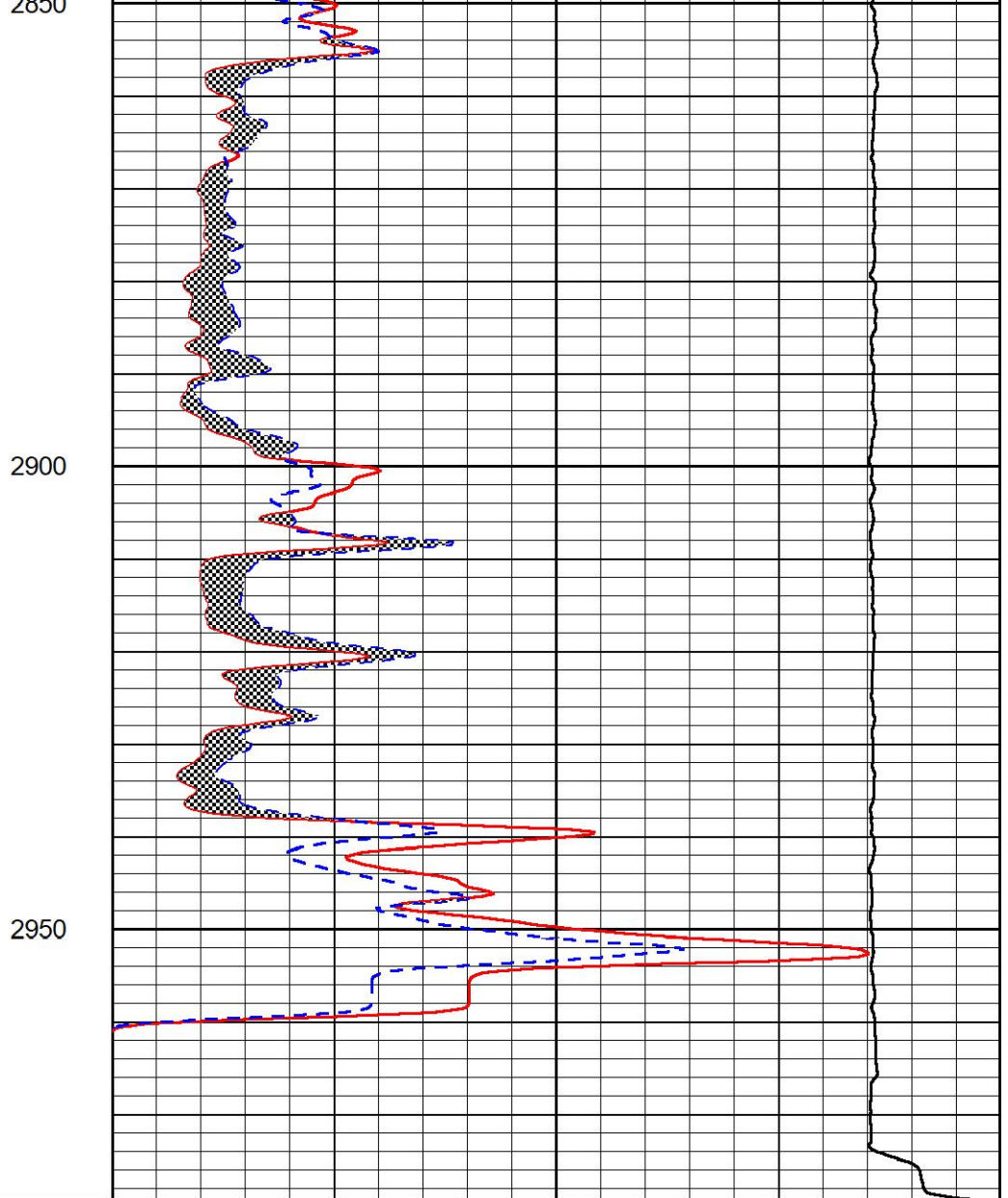
2800

2850





0	GR (GAPI)	150
6	Caliper (in)	16
2.875	mcal (in)	7.875
-200	sp (mV)	0



0	Micro Inverse 1 X 1 (Ohm-m)	40
0	Micro Normal 2" (Ohm-m)	40
10000	Line Weight (lb)	0



MIDWEST WIRELINE

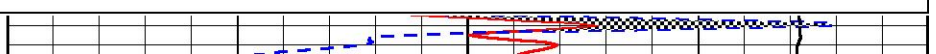
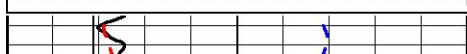
## REPEAT SECTION

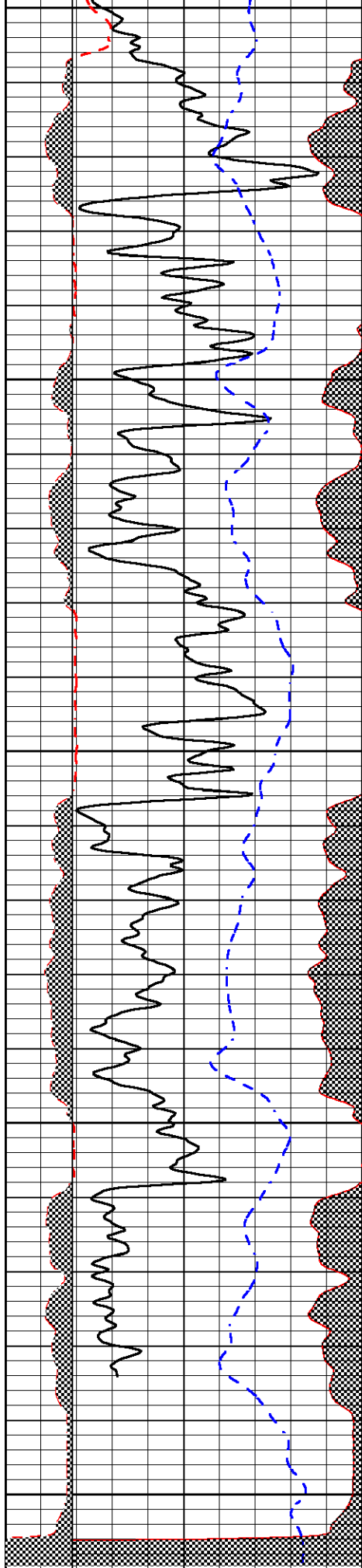
### REPEAT PASS

Database File m3 helium\_smith c #2.db  
 Dataset Pathname StkMI/pass2.1  
 Presentation Format \_micro  
 Dataset Creation Fri Nov 10 23:08:03 2023  
 Charted by Depth in Feet scaled 1:240

0	GR (GAPI)	150
6	Caliper (in)	16
2.875	mcal (in)	7.875
-200	sp (mV)	0

0	Micro Inverse 1 X 1 (Ohm-m)	40
0	Micro Normal 2" (Ohm-m)	40
10000	Line Weight (lb)	0





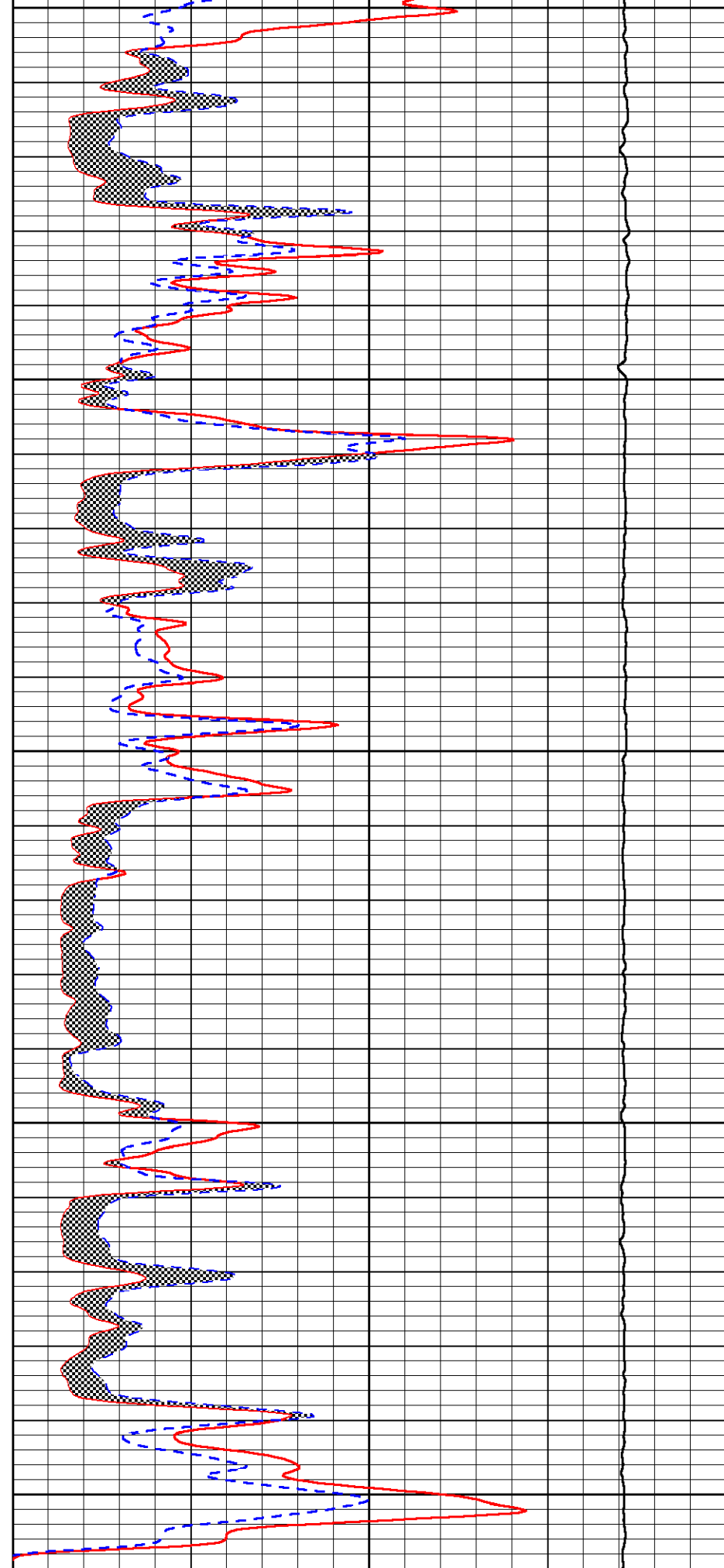
2750

2800

2850

2900

2950





	Density	Calibrated		PE	Calibrated	Quality			
Background:	Actual			Actual					
SS:						0.225			
LS:						0.208			
Aluminum:									
SS:	2.6000	2.6000	g/cc			0.210			
LS:	2.6000	2.6000	g/cc			0.210			
Magnesium:									
SS:	1.6800	1.6800	g/cc	2.5700	2.5700	0.207			
LS:	1.6800	1.6800	g/cc	2.5700	2.5700	0.173			
Aluminum+Iron:									
SS:						6.1800	0.215		
LS:						6.1800	0.205		

Before Survey									
Performed: Wed Feb 9 13:15:42 2022									
SS:	0	0	0	0	0	0	0	0	cps
LS:	1370	1580	3705	3037	48	80	50	4	cps
After Survey									
Performed: Wed Feb 9 13:16:02 2022									
SS:	0	0	0	0	0	0	0	0	cps
LS:	1400	1600	3800	3100	60	100	70	6	cps

Caliper:	Reference:	Reading:	
Small Ring:	6.0 in	0.2	
Large Ring:	15.0 in	0.8	
Gain:	16.161		
Offset:	1.130		

Compensated Neutron Calibration Report

Serial Number:	207
Tool Model:	M&W

CALIBRATION			
Detector	Readings	Target	Normalization
Short Space	6240.00 cps	1000.00 cps	1.6025
Long Space	460.00 cps	1000.00 cps	1.9500

PRE-SURVEY VERIFICATION			
Detector	Readings	Measured	Target
1) Short Space	cps		
Long Space	cps	pu	pu
2) Short Space	cps		
Long Space	cps	pu	
3) Short Space	cps		
Long Space	cps	pu	

POST-SURVEY VERIFICATION			
Detector	Readings	Measured	Target
1) Short Space	cps		
Long Space	cps	pu	pu
2) Short Space	cps		
Long Space	cps	pu	pu
3) Short Space	cps		

## Gamma Ray Calibration Report

Serial Number:	102	
Tool Model:	M&W	
Performed:	Mon Sep 25 22:02:33 2023	
Calibrator Value:	1.0	GAPI
Background Reading:	0.0	cps
Calibrator Reading:	1.0	cps
Sensitivity:	0.5250	GAPI/cps



MIDWEST WIRELINE

Company	M3 Helium Corporation
Well	Smith C #2
Field	Hugoton
County	Haskell
State	Kansas