



MIDWEST WIRELINE

**MICRORESISTIVITY**

Company **Michael D. Weilert Oil Company**  
 Well **Horacek #1**  
 Field **Wildcat**  
 County **Ness** State **Kansas**

Location: **API #: 15-135-26213-00-00**  
**NE NW**  
**4620 FSL & 3300 FEL**  
**SEC 19 TWP 16S RGE 25W**  
 Permanent Datum **Ground Level** Elevation **2574**  
 Log Measured From **Kelly Bushing**  
 Drilling Measured From **Kelly Bushing**  
 Other Services **CNL/CDL DIL**  
 Elevation **2579**  
 K.B. **2574**  
 D.F. **2574**  
 G.L.

Date	11/12/2023
Run Number	One
Depth Driller	4610
Depth Logger	4613
Bottom Logged Interval	4612
Top Log Interval	3700
Casing Driller	8:625 @ 261
Casing Logger	262
Bit Size	7.875
Type Fluid in Hole	Chemical
Salinity, ppm CL	7000
Density / Viscosity	9.3 47
pH / Fluid Loss	9.1 12.0
Source of Sample	Flowline
Rm @ Meas. Temp	0.8 @ 70
Rmt @ Meas. Temp	0.6 @ 70
Rmc @ Meas. Temp	1.08 @ 70
Source of Rmf / Rmc	Charts
Rm @ BHT	0.46 @ 122
Operating Rig Time	2.5 Hours
Max Rec. Temp. F	122
Equipment Number	P-24
Location	Hays
Recorded By	T. Martin
Witnessed By	Michael Weilert

<<< Fold Here >>>

All interpretations are opinions based on inferences from electrical or other measurements and Midwest Wireline LLC cannot and does not guarantee the accuracy or correctness of any interpretation, and Midwest Wireline LLC will not be liable or responsible for any loss, costs, damages, or expenses incurred or sustained by anyone resulting from any interpretation made by any of our officers, agents or employees.

**Comments**

**N/A DENOTES NOT AVAILABLE OR NON-APPLICABLE.**

Utica, KS, 2 E to F Rd,  
 1/2 E, S into

Log Measured From: Kelly Bushing 5 Ft. Above Permanent Datum

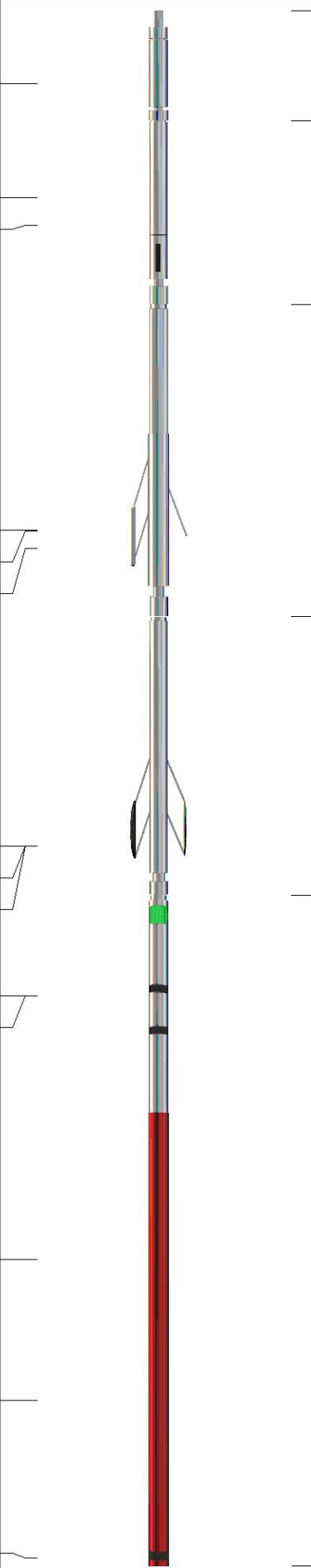
THANK YOU FOR USING MIDWEST WIRELINE LLC  
 785-625-3858

**Your Midwest Wireline Crew**

Engineer: T. Martin  
 Operator:  
 Operator:  
 Operator:

**This Log Record Was Witnessed By**

Primary Witness: Micheal Weilert  
 Secondary Witness: Jerry Green  
 Secondary Witness:  
 Secondary Witness:

Sensor	Offset (ft)	Schematic	Description	Length (ft)	O.D. (in)	Weight (lb)
GR	40.33		GR-M&W (102)	3.00	3.50	50.00
CNLSC CNSSC	37.23 36.48		CNT-M&W (207)	5.00	3.50	100.00
LSD DCAL SSD	28.18 28.17 27.68		CDL-M&W (307-25)	8.50	4.00	250.00
MCAL MI MN	19.58 19.58 19.58		ML-PSIML (401)	7.58	4.00	65.00
RLL3F RLL3	15.50 15.50					
CILD	8.33		DIL-M&W (507)	18.25	3.50	220.00
CILM	4.50					
SP	0.20					

Dataset: weilert\_horacek #1.db: field/well/StkMI/pass3.1  
 Total length: 42.33 ft  
 Total weight: 685.00 lb  
 O.D.: 4.00 in

# Log Variables

DatabaseC:\ProgramData\Warrior\Data\weilert\_horacek #1.db  
 Dataset field/well/StkMI/pass3.1/\_vars\_

## Top - Bottom

BOREID in 7.875	BOTTEMP degF 122	CASEOD in 5.5	CASETHCK in 0	FLUIDDEN g/cc 1	MATRXDEN g/cc 2.71	NPORSEL Limestone	PERFS No
SNDERR mmho/m 0	SNDERRM mmho/m 0	SPSHIFT mV 240	SRFTEMP degF 60	SZCOR Off	TDEPTH ft 4613		

## Variable Description

BOREID : Borehole I.D.  
 BOTTEMP : Bottom Hole Temperature  
 CASEOD : Casing O.D.  
 CASETHCK : Casing Thickness  
 FLUIDDEN : Fluid Density  
 MATRXDEN : Matrix Density  
 NPORSEL : Neutron Porosity Curve Select

PERFS : Perforation Flag  
 SNDERR : Deep Sonde Error Correction  
 SNDERRM : Medium Sonde Error Correction  
 SPSHIFT : S.P. Baseline Offset  
 SRFTEMP : Surface Temperature  
 SZCOR : CN Size Cor. ?  
 TDEPTH : Total Depth



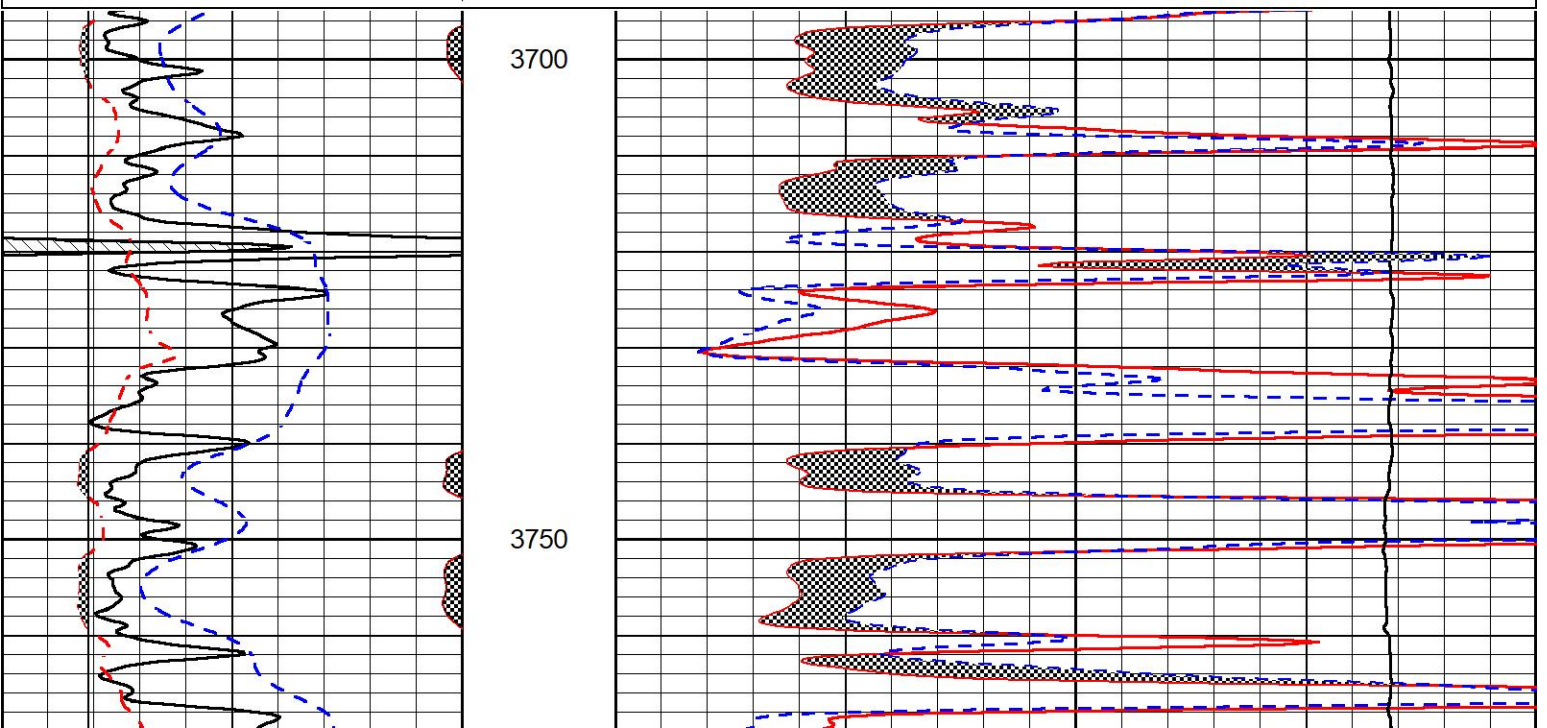
## DETAIL SECTION

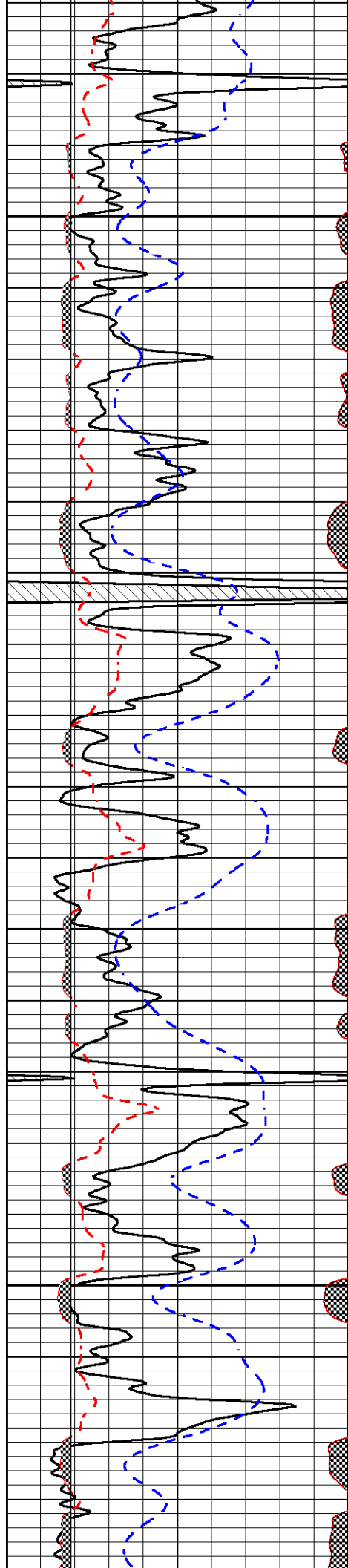
### MAIN PASS

Database File weilert\_horacek #1.db  
 Dataset Pathname StkMI/pass3.1  
 Presentation Format \_micro  
 Dataset Creation Sun Nov 12 17:10:47 2023  
 Charted by Depth in Feet scaled 1:240

0	GR (GAPI)	150
6	Caliper (in)	16
2.875	mcal (in)	7.875
-200	sp (mV)	0

0	Micro Inverse 1 X 1 (Ohm-m)	40
0	Micro Normal 2" (Ohm-m)	40
10000	Line Weight (lb)	0



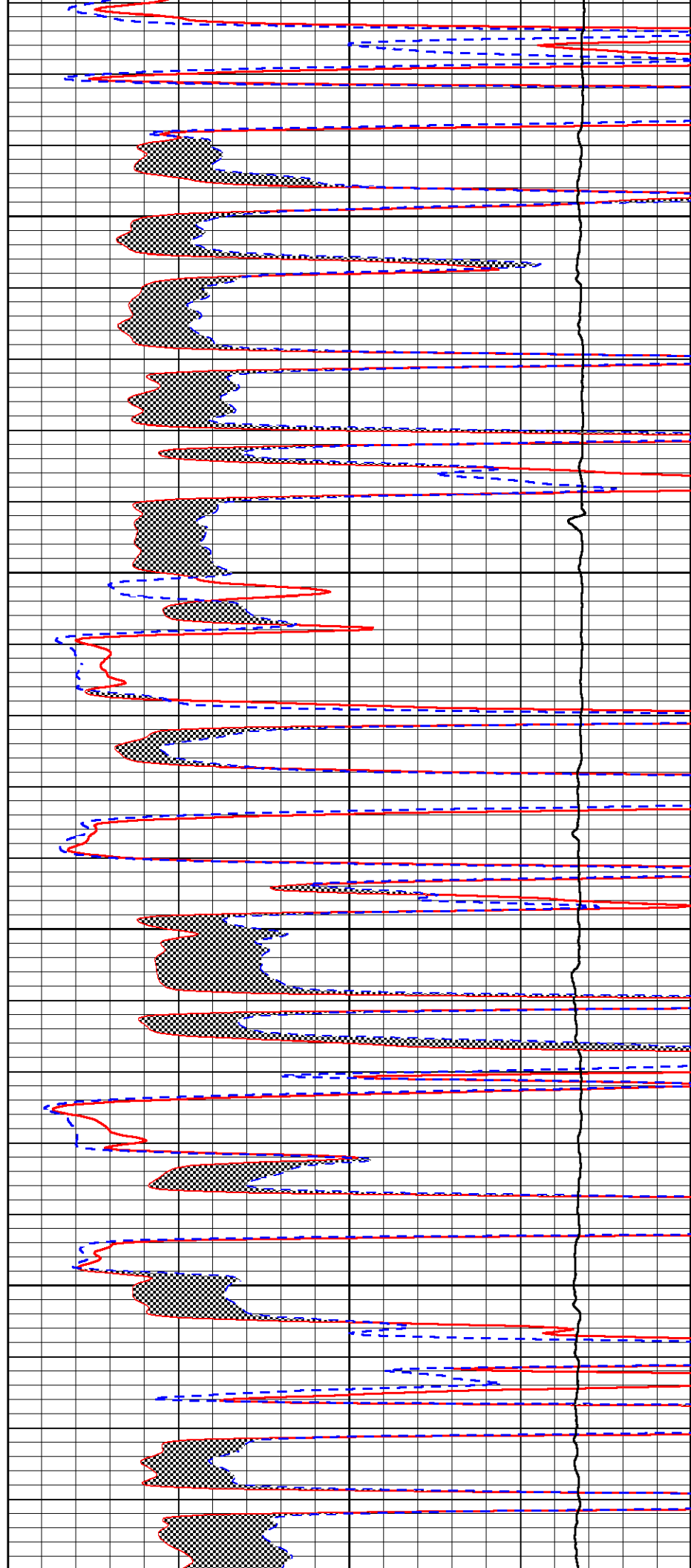


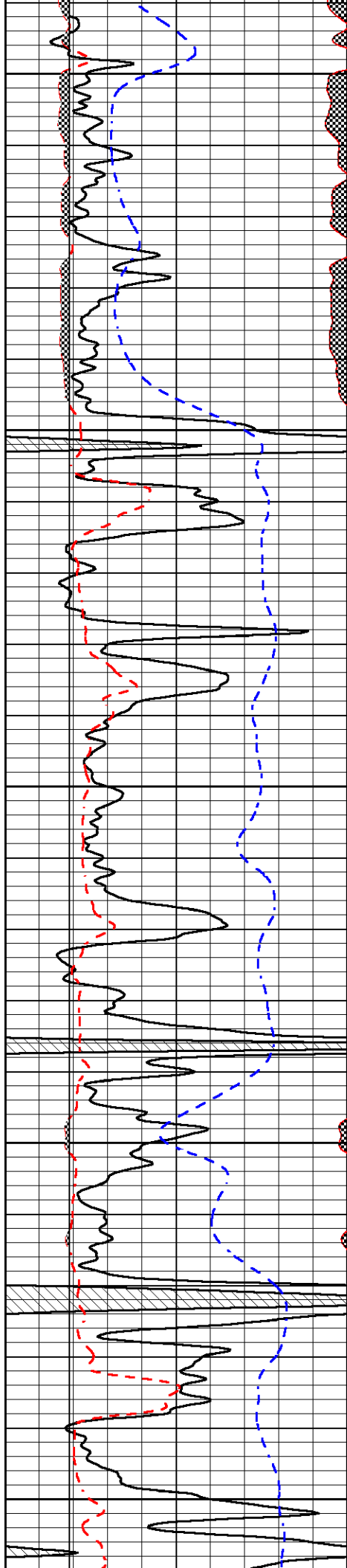
3800

3850

3900

3950





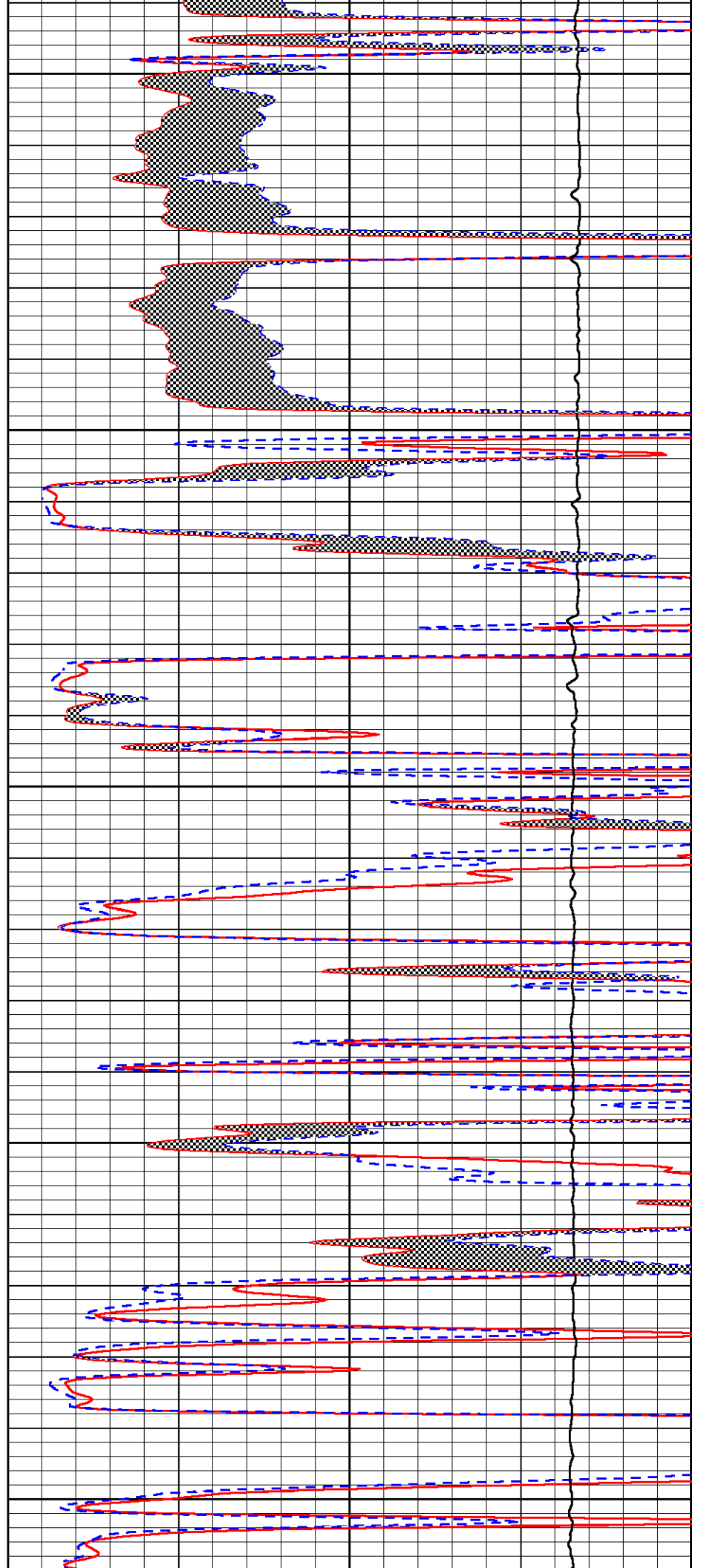
4000

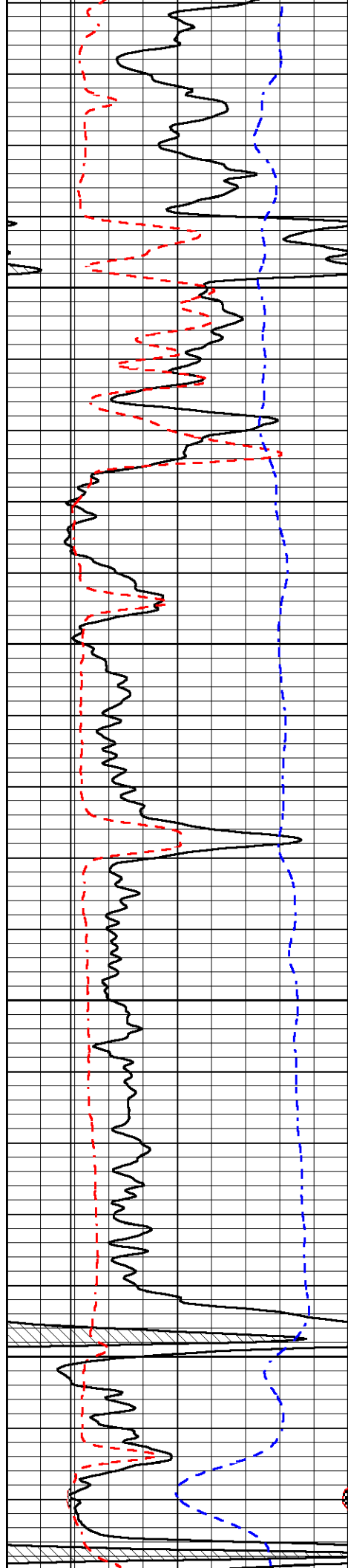
4050

4100

4150

4200



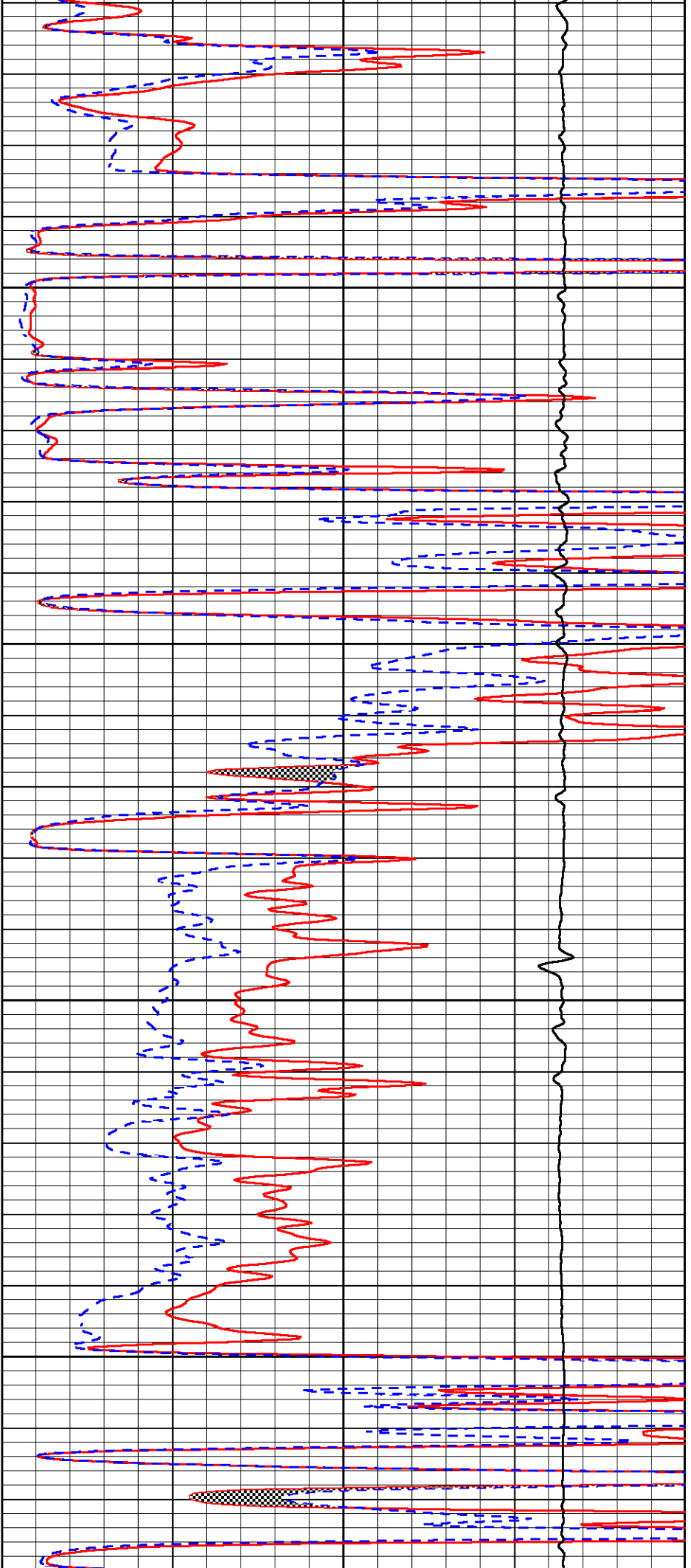


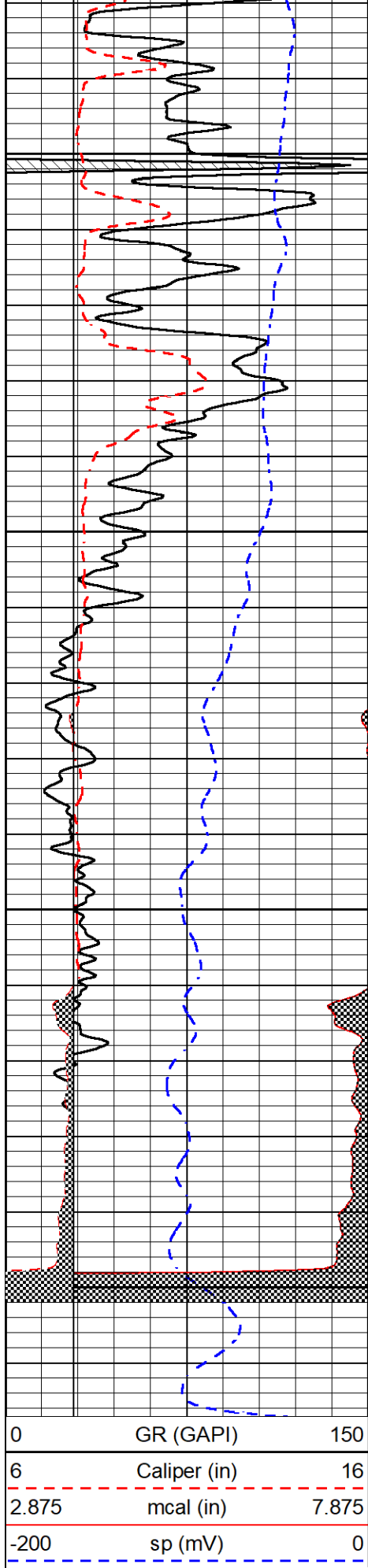
4250

4300

4350

4400



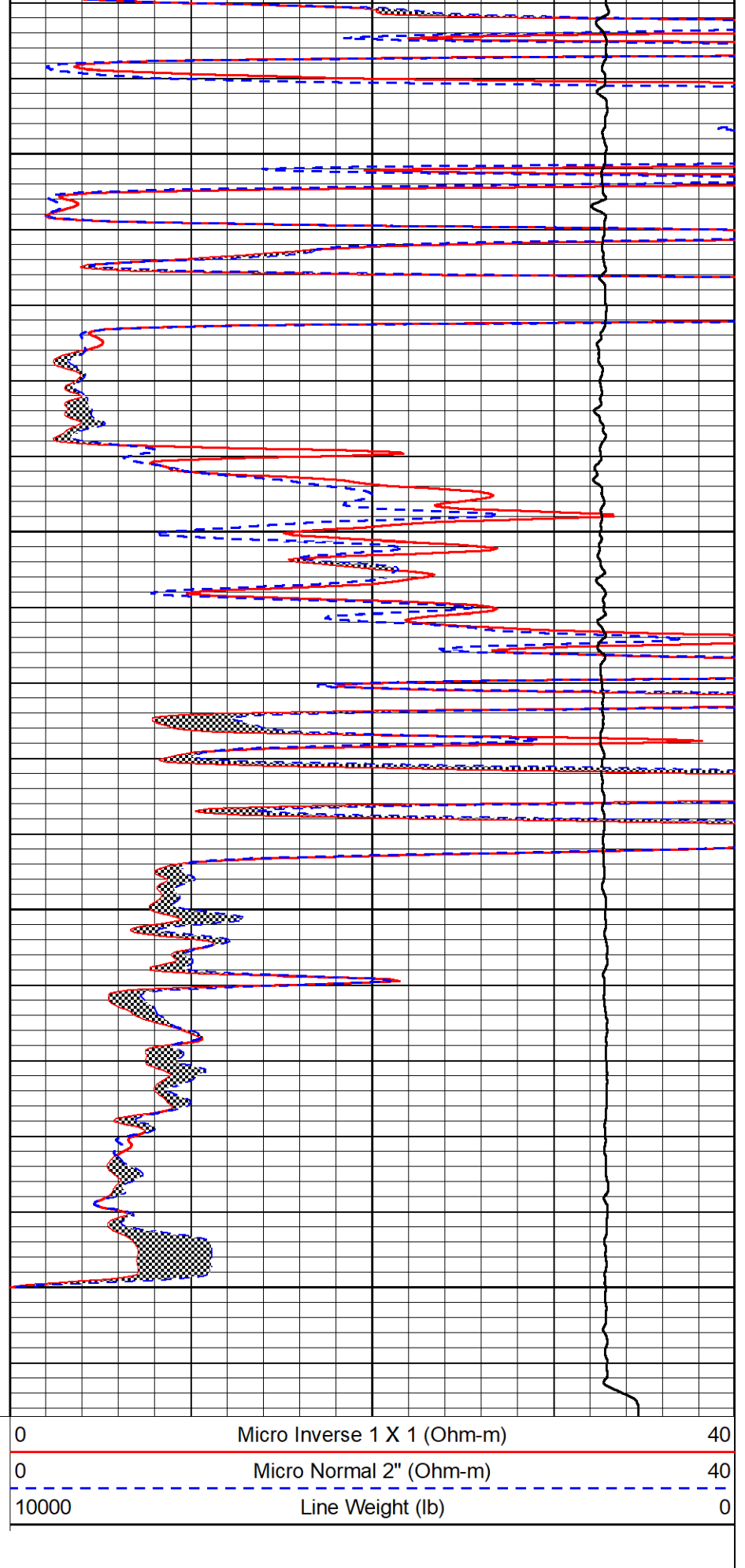


4450

4500

4550

4600



REPEAT SECTION



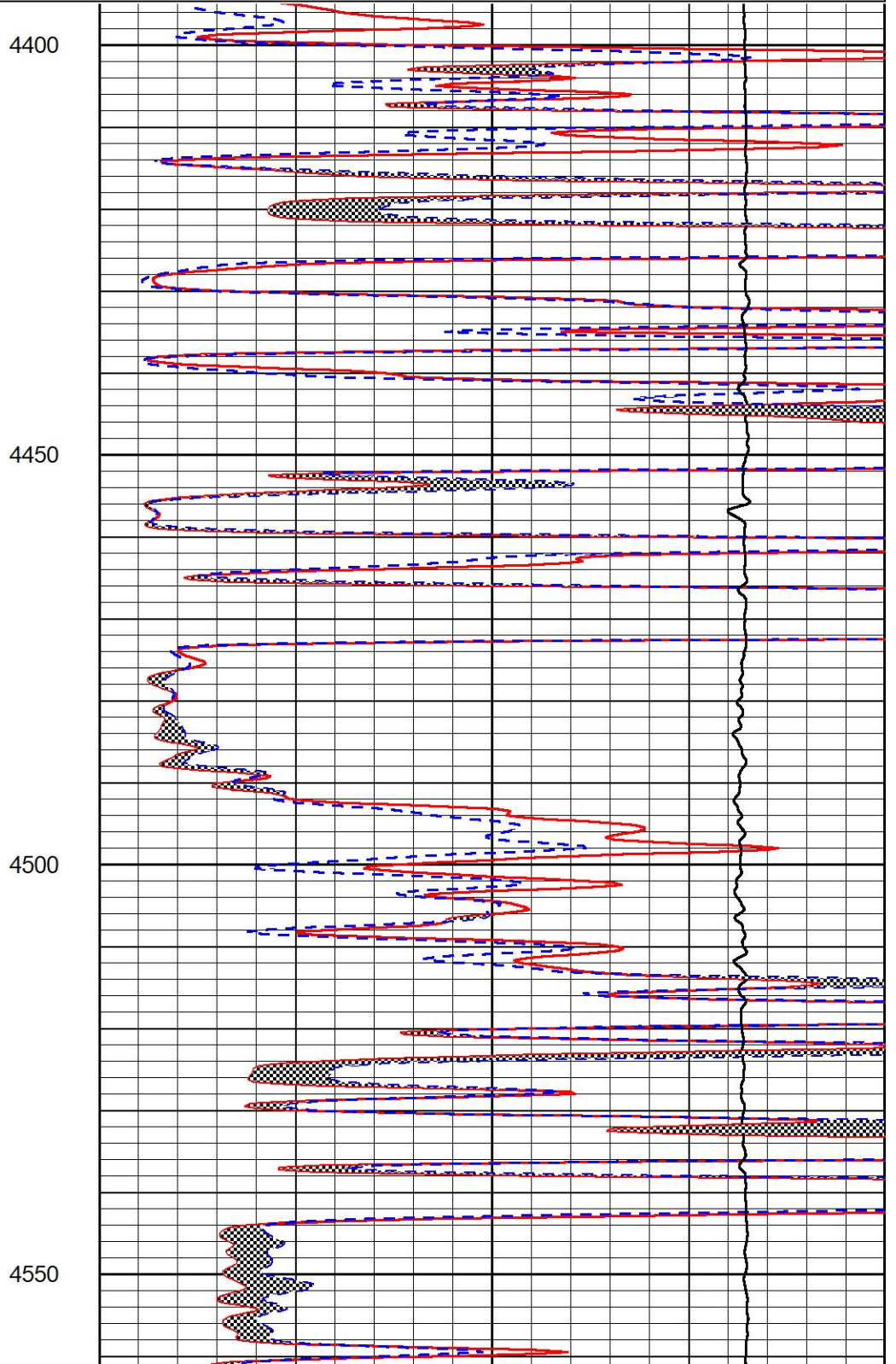
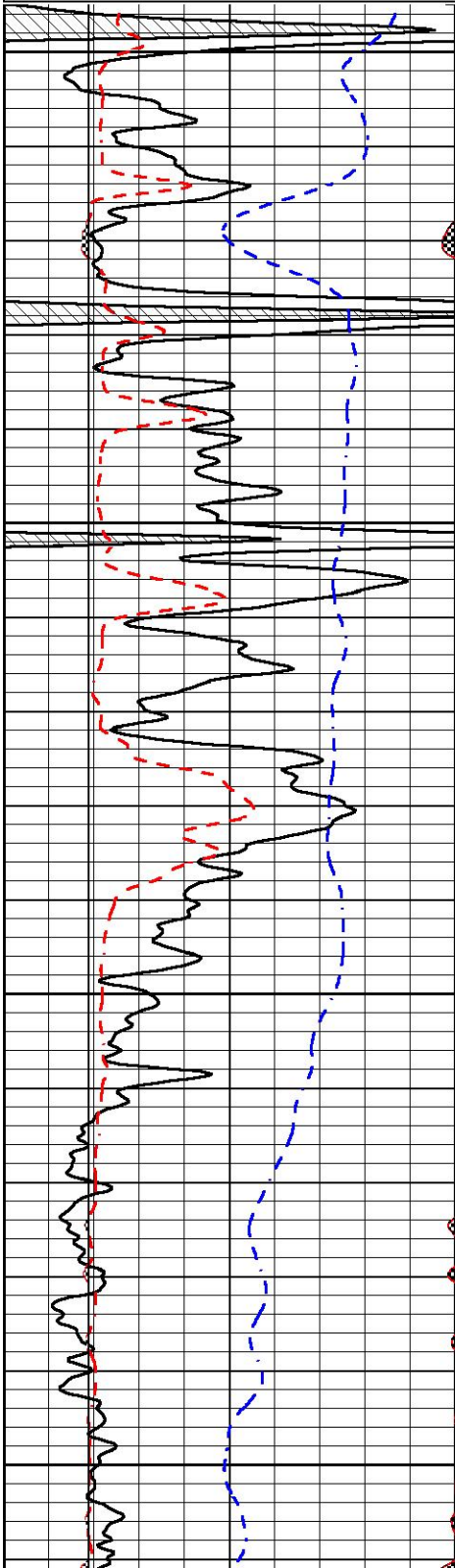


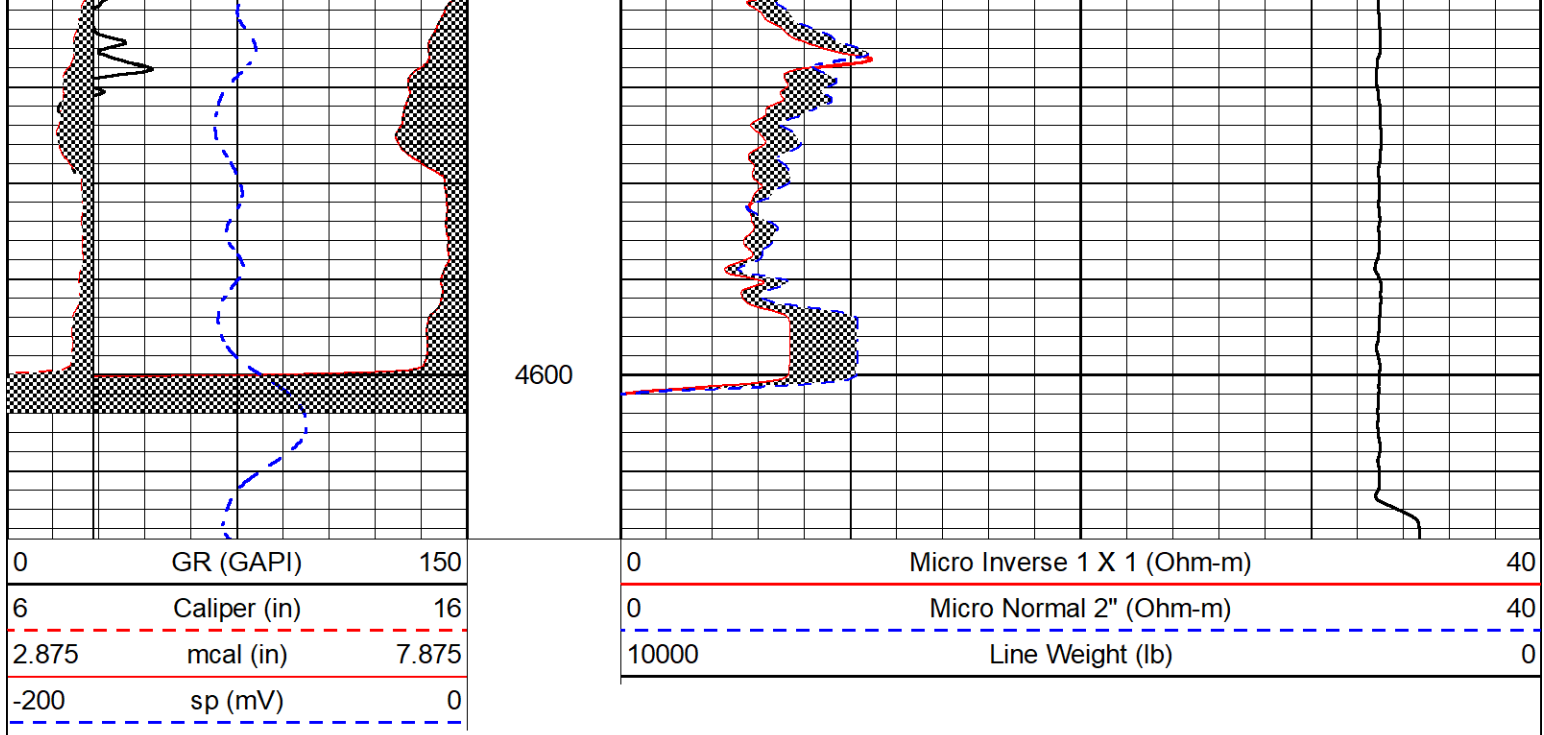
# REPEAT PASS

Database File weilert\_horacek #1.db  
 Dataset Pathname StkMI/pass2.1  
 Presentation Format \_micro  
 Dataset Creation Sun Nov 12 16:26:55 2023  
 Charted by Depth in Feet scaled 1:240

0	GR (GAPI)	150
6	Caliper (in)	16
2.875	mcal (in)	7.875
-200	sp (mV)	0

0	Micro Inverse 1 X 1 (Ohm-m)	40
0	Micro Normal 2" (Ohm-m)	40
10000	Line Weight (lb)	0





### Calibration Report

Database File weilert\_horacek #1.db  
 Dataset Pathname StkMI/pass3.1  
 Dataset Creation Sun Nov 12 17:10:47 2023

### Dual Induction Calibration Report

Serial-Model: 507-M&W  
 Surface Cal Performed:

Loop:	Readings		References			Results	
	Air	Loop	Air	Loop		m	b
Deep	68.570	638.100	0.000	255.800	mmho/m	0.500	-37.000
Medium	184.288	716.191	0.000	255.800	mmho/m	0.450	-79.000

### Microlog Calibration Report

Serial-Model: 401-PSIML  
 Performed: Mon Sep 25 22:02:56 2023

	Readings		References			Results	
	Zero	Cal	Zero	Cal		m	b
Normal	0.0000	1.0000	0.0000	1.0000	Ohm-m	18500.0000	-1.0000
Inverse	0.0000	1.0000	0.0000	1.0000	Ohm-m	17000.0000	-0.7500
Caliper	1.0052	1.0858	5.0000	16.5000	in	142.7190	-138.8600

### Compensated Density Calibration Report

Serial-Model: 307-25-M&W  
 Source / Verifier: 20762B / 2ci  
 Master Calibration Performed: Mon Oct 16 02:22:39 2023  
 Before Survey Verification Performed:  
 After Survey Verification Performed:

Master Calibration

	Density		Far Detector	Near Detector	
Magnesium	1.680	g/cc	4567.03	5405.52	cps
Aluminum	2.570	g/cc	1004.45	3659.64	cps
Spine Angle = 75.56			Density/Spine Ratio = 0.569		
	Size		Reading		
Small Ring	6.00	in	1.16		
Large Ring	18.00	in	1.01		

**Compensated Neutron Calibration Report**

Serial Number: 207  
Tool Model: M&W

**CALIBRATION**

Detector	Readings	Target	Normalization
Short Space	6240.00 cps	1000.00 cps	1.6025
Long Space	460.00 cps	1000.00 cps	1.9500

**PRE-SURVEY VERIFICATION**

Detector	Readings	Measured	Target
1) Short Space	cps		
Long Space	cps	pu	pu
2) Short Space	cps		
Long Space	cps	pu	
3) Short Space	cps		
Long Space	cps	pu	

**POST-SURVEY VERIFICATION**

Detector	Readings	Measured	Target
1) Short Space	cps		
Long Space	cps	pu	pu
2) Short Space	cps		
Long Space	cps	pu	pu
3) Short Space	cps		
Long Space	cps	pu	pu


**Gamma Ray Calibration Report**

Serial Number: 102  
Tool Model: M&W  
Performed: Mon Sep 25 22:02:33 2023

Calibrator Value: 1.0 GAPI

Background Reading: 0.0 cps  
Calibrator Reading: 1.0 cps

Sensitivity: 0.5250 GAPI/cps

	<b>Company</b> Micheal D. Weilert Oil Company <b>Well</b> Horacek #1
---	---



MIDWEST WIRELINE

Field	Wildcat
County	Ness
State	Kansas