



MIDWEST WIRELINE

# DUAL COMPENSATED POROSITY

Company Micheal D. Weilert Oil Company  
 Well Horacek #1  
 Field Wildcat  
 County Ness  
 State Kansas

Company Micheal D. Weilert Oil Company  
 Well Horacek #1  
 Field Wildcat  
 County Ness  
 State Kansas

Location: API #: 15-135-26213-00-00  
 NE NW  
 4620 FSL & 3300 FEL  
 SEC 19 TWP 16S RGE 25W  
 Permanent Datum Ground Level Elevation 2574  
 Log Measured From Kelly Bushing  
 Drilling Measured From Kelly Bushing  
 Other Services  
 DIL/MEL  
 K.B. 2579  
 D.F.  
 G.L. 2574

Date	11/12/2023						
Run Number	One						
Type Log	CNL/CDL						
Depth Driller	4610						
Depth Logger	4613						
Bottom Logged Interval	4584						
Top Logged Interval	3700						
Type Fluid In Hole	Chemical						
Salinity, PPM CL	7000						
Density	9.3						
Level	Full						
Max. Rec. Temp. F	122						
Operating Rig Time	2.5 Hours						
Equipment -- Location	P-24 Hays						
Recorded By	T. Martin						
Witnessed By	Micheal Weilert						
Borehole Record							
Run No.	Bit	From	To	Size	Wgt.	From	To
One	12.25	00	261	8.625	23	00	261
Two	7.875	261	TD				
Casing Record							

<<< Fold Here >>>

All interpretations are opinions based on inferences from electrical or other measurements and Midwest Wireline Services, LLC cannot and does not guarantee the accuracy or correctness of any interpretation, and Midwest Wireline Services, LLC will not be liable or responsible for any loss, costs, damages, or expenses incurred or sustained by anyone resulting from any interpretation made by any of our officers, agents or employees.

Comments

N/A DENOTES NOT AVAILABLE OR NON-APPLICABLE.

Utica, KS, 2 E to F Rd,  
 1/2 E, S into

Log Measured From: Kelly Bushing 5 Ft. Above Permanent Datum

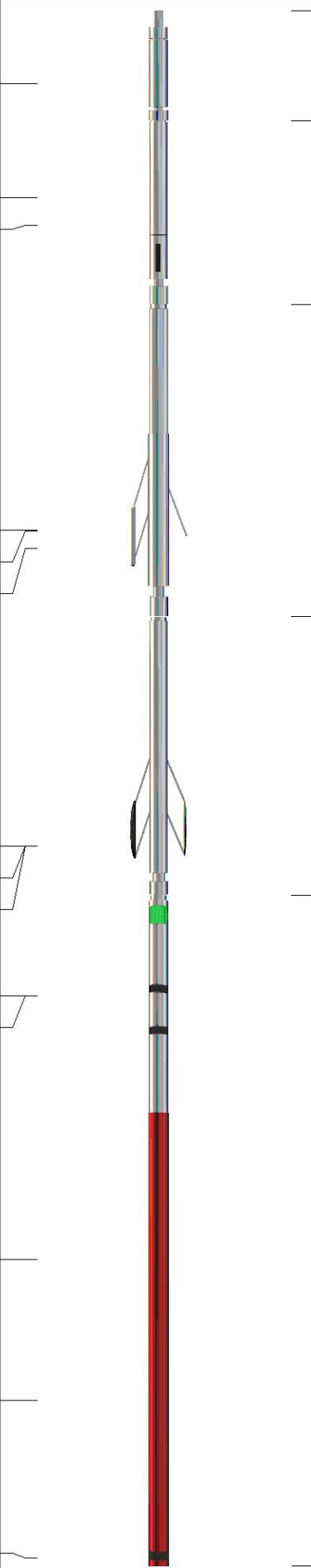
THANK YOU FOR USING MIDWEST WIRELINE LLC  
 785-625-3858

Your Midwest Wireline Crew

Engineer: T. Martin  
 Operator:  
 Operator:  
 Operator:

This Log Record Was Witnessed By

Primary Witness: Micheal Weilert  
 Secondary Witness: Jerry Green  
 Secondary Witness:  
 Secondary Witness:

Sensor	Offset (ft)	Schematic	Description	Length (ft)	O.D. (in)	Weight (lb)
GR	40.33		GR-M&W (102)	3.00	3.50	50.00
CNLSC CNSSC	37.23 36.48		CNT-M&W (207)	5.00	3.50	100.00
LSD DCAL SSD	28.18 28.17 27.68		CDL-M&W (307-25)	8.50	4.00	250.00
MCAL MI MN	19.58 19.58 19.58		ML-PSIML (401)	7.58	4.00	65.00
RLL3F RLL3	15.50 15.50					
CILD	8.33		DIL-M&W (507)	18.25	3.50	220.00
CILM	4.50					
SP	0.20					

Dataset: weilert\_horacek #1.db: field/well/StkMI/pass3.1  
 Total length: 42.33 ft  
 Total weight: 685.00 lb  
 O.D.: 4.00 in

# Log Variables

DatabaseC:\ProgramData\Warrior\Data\weilert\_horacek #1.db  
 Dataset field/well/StkMI/pass3.1/\_vars\_

## Top - Bottom

BOREID in 7.875	BOTTEMP degF 122	CASEOD in 5.5	CASETHCK in 0	FLUIDDEN g/cc 1	MATRXDEN g/cc 2.71	NPORSEL Limestone	PERFS No
SNDERR mmho/m 0	SNDERRM mmho/m 0	SPSHIFT mV 240	SRFTEMP degF 60	SZCOR Off	TDEPTH ft 4613		

## Variable Description

BOREID : Borehole I.D.  
 BOTTEMP : Bottom Hole Temperature  
 CASEOD : Casing O.D.  
 CASETHCK : Casing Thickness  
 FLUIDDEN : Fluid Density  
 MATRXDEN : Matrix Density  
 NPORSEL : Neutron Porosity Curve Select

PERFS : Perforation Flag  
 SNDERR : Deep Sonde Error Correction  
 SNDERRM : Medium Sonde Error Correction  
 SPSHIFT : S.P. Baseline Offset  
 SRFTEMP : Surface Temperature  
 SZCOR : CN Size Cor. ?  
 TDEPTH : Total Depth

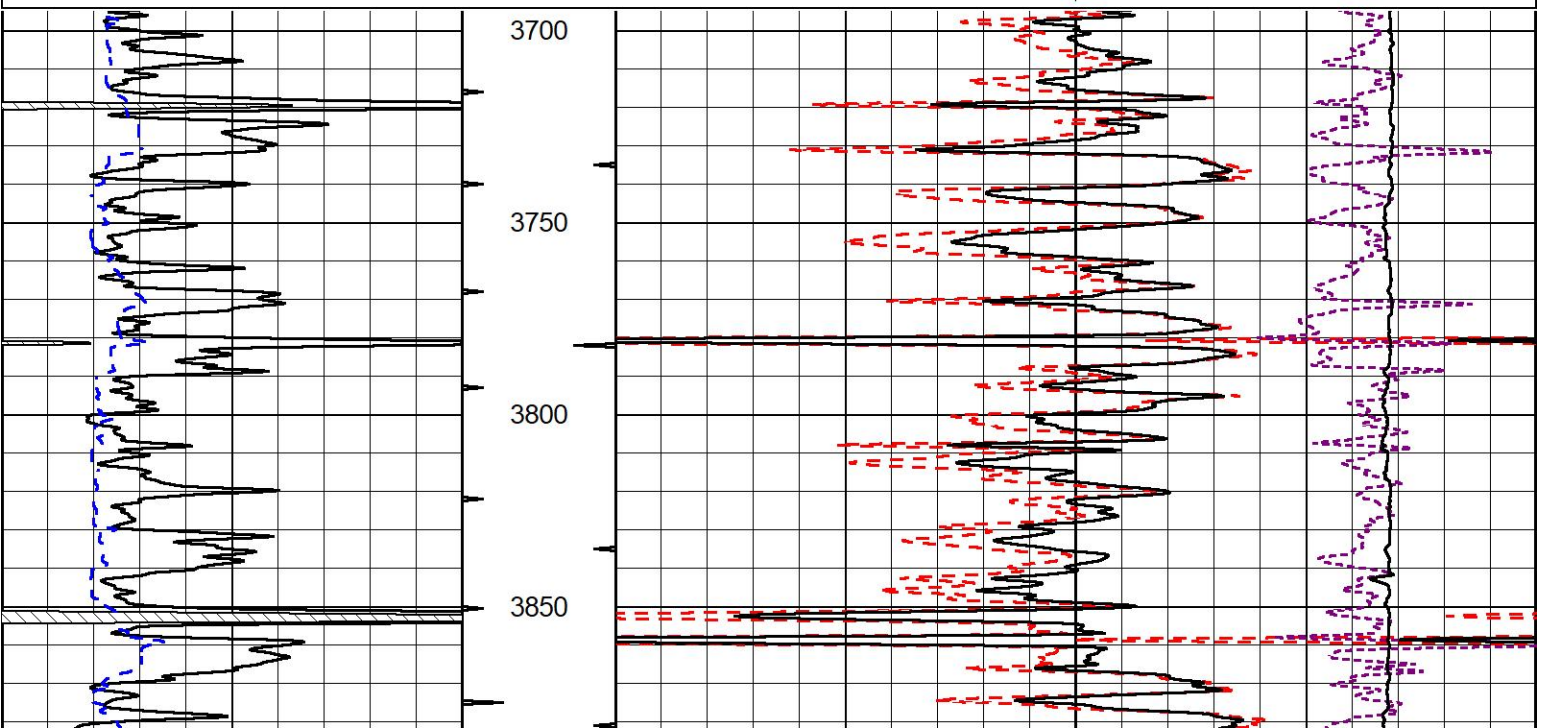


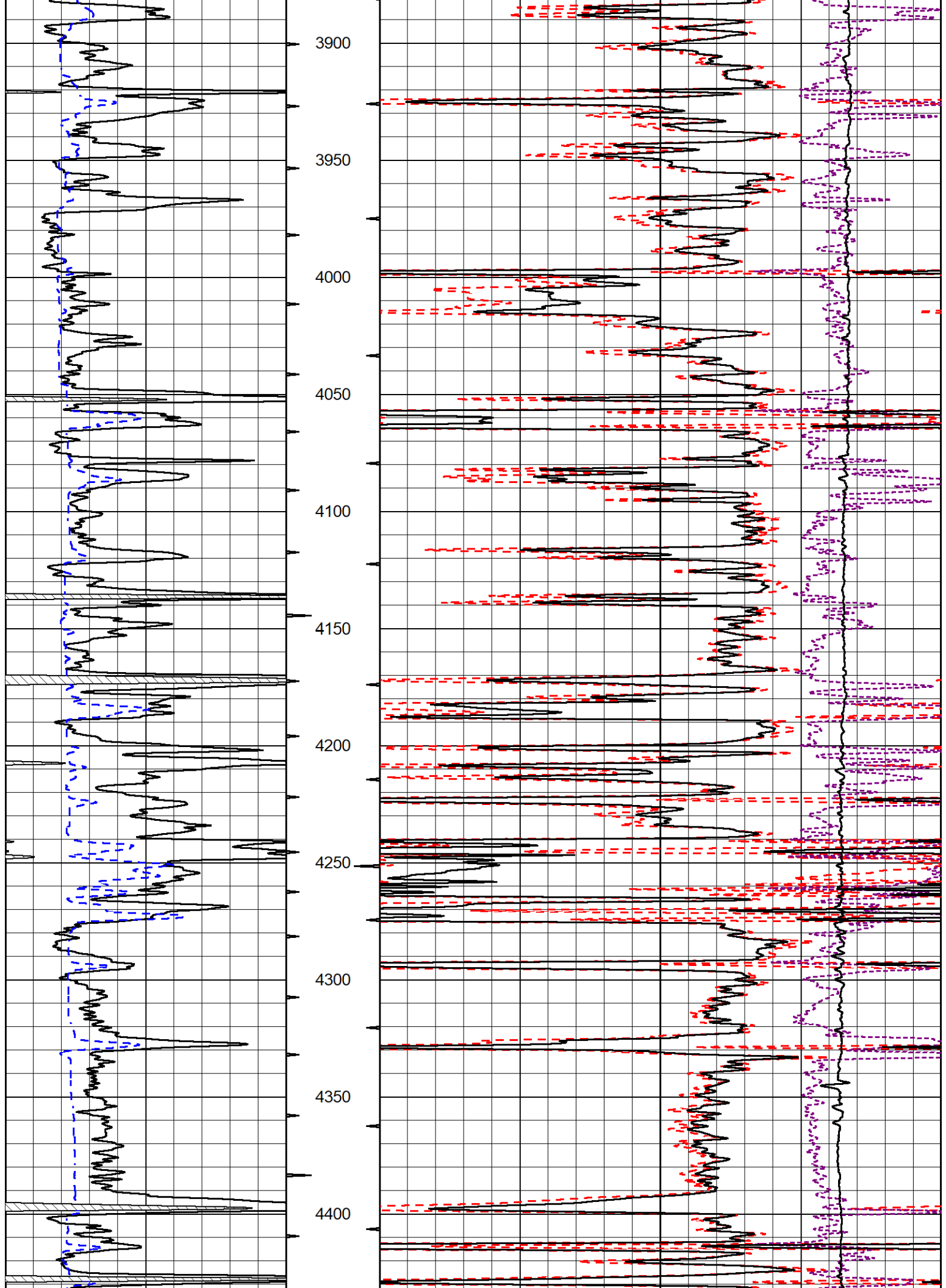
## 2" SCALE BULK DENSITY

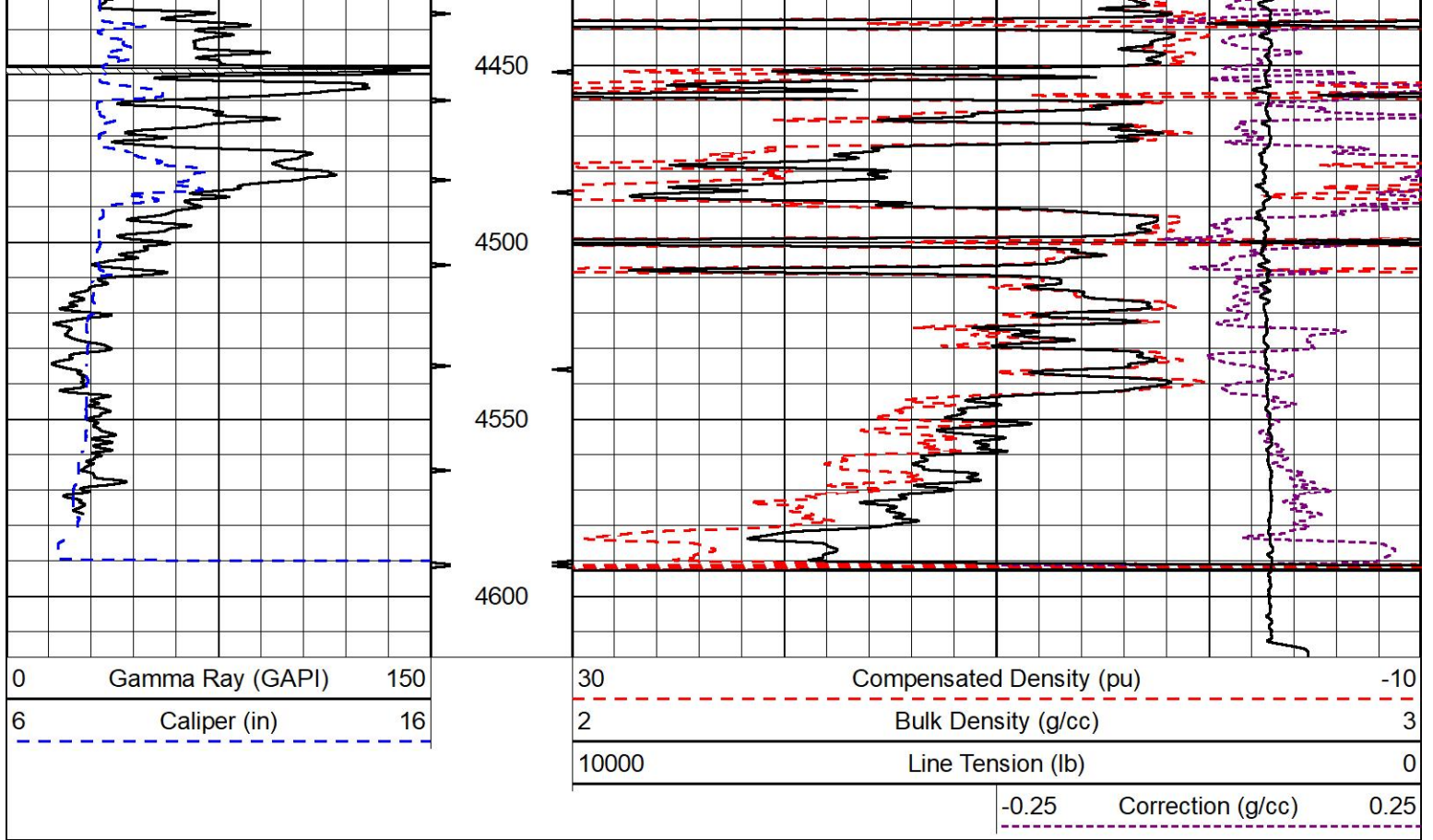
### MAIN PASS

Database File weilert\_horacek #1.db  
 Dataset Pathname StkMI/pass3.3  
 Presentation Format \_cdl  
 Dataset Creation Sun Nov 12 16:40:40 2023  
 Charted by Depth in Feet scaled 1:600

0	Gamma Ray (GAPI)	150	30	Compensated Density (pu)	-10	
6	Caliper (in)	16	2	Bulk Density (g/cc)	3	
			10000	Line Tension (lb)	0	
				-0.25	Correction (g/cc)	0.25







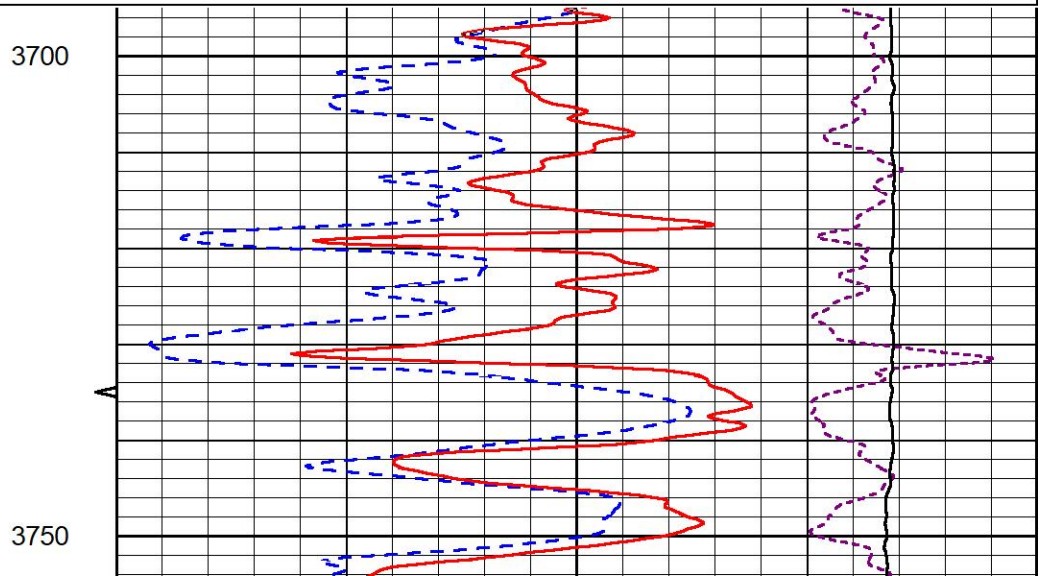
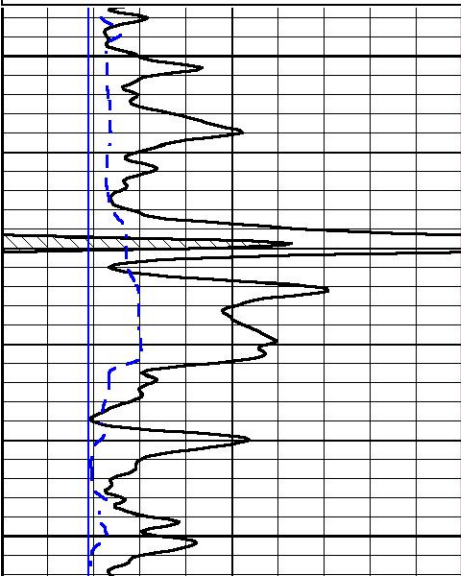
## DETAIL SECTION

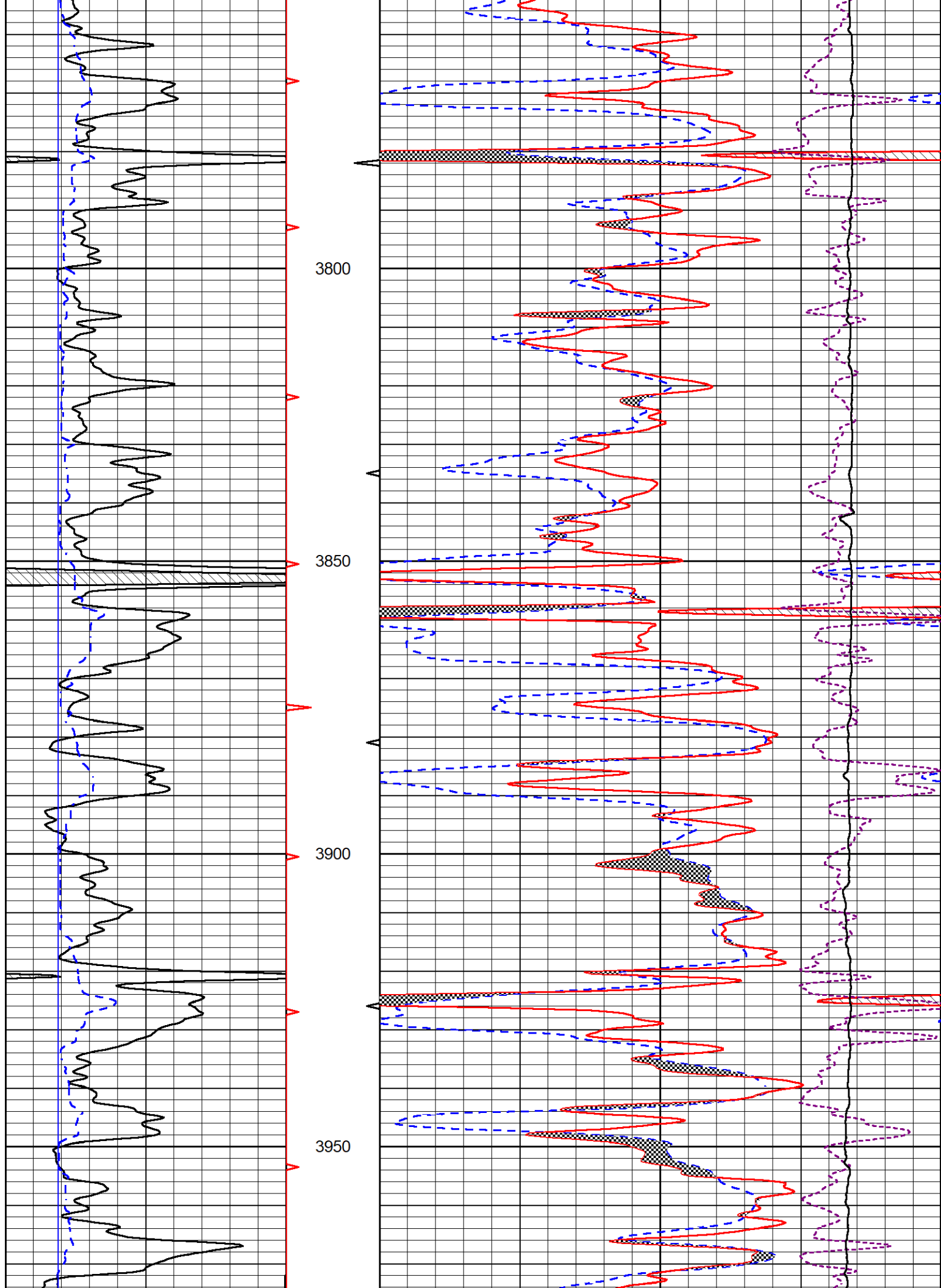
### MAIN PASS

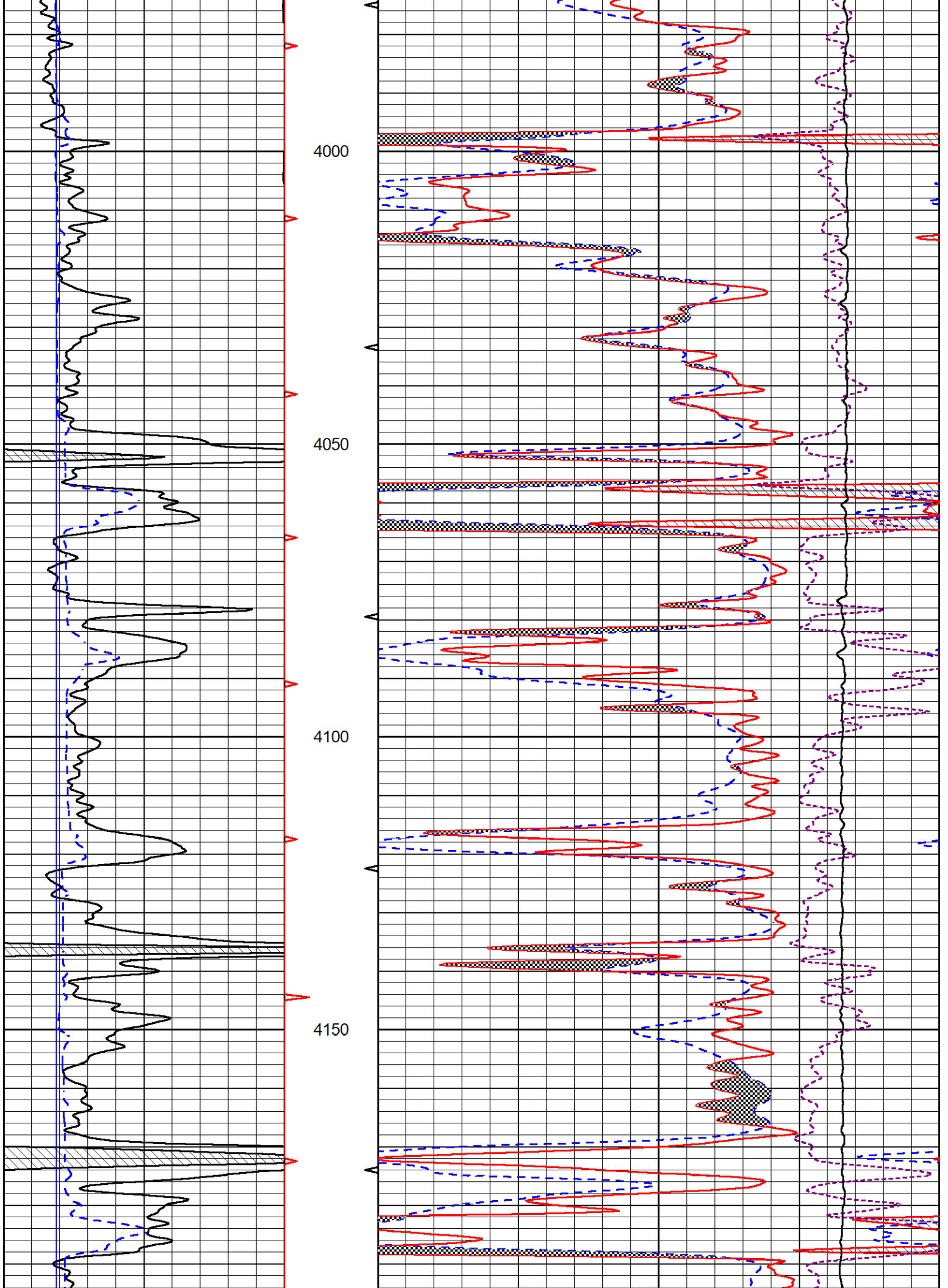
Database File weilert\_horacek #1.db  
 Dataset Pathname StkMI/pass3.1  
 Presentation Format \_CNDLS~1  
 Dataset Creation Sun Nov 12 17:10:47 2023  
 Charted by Depth in Feet scaled 1:240

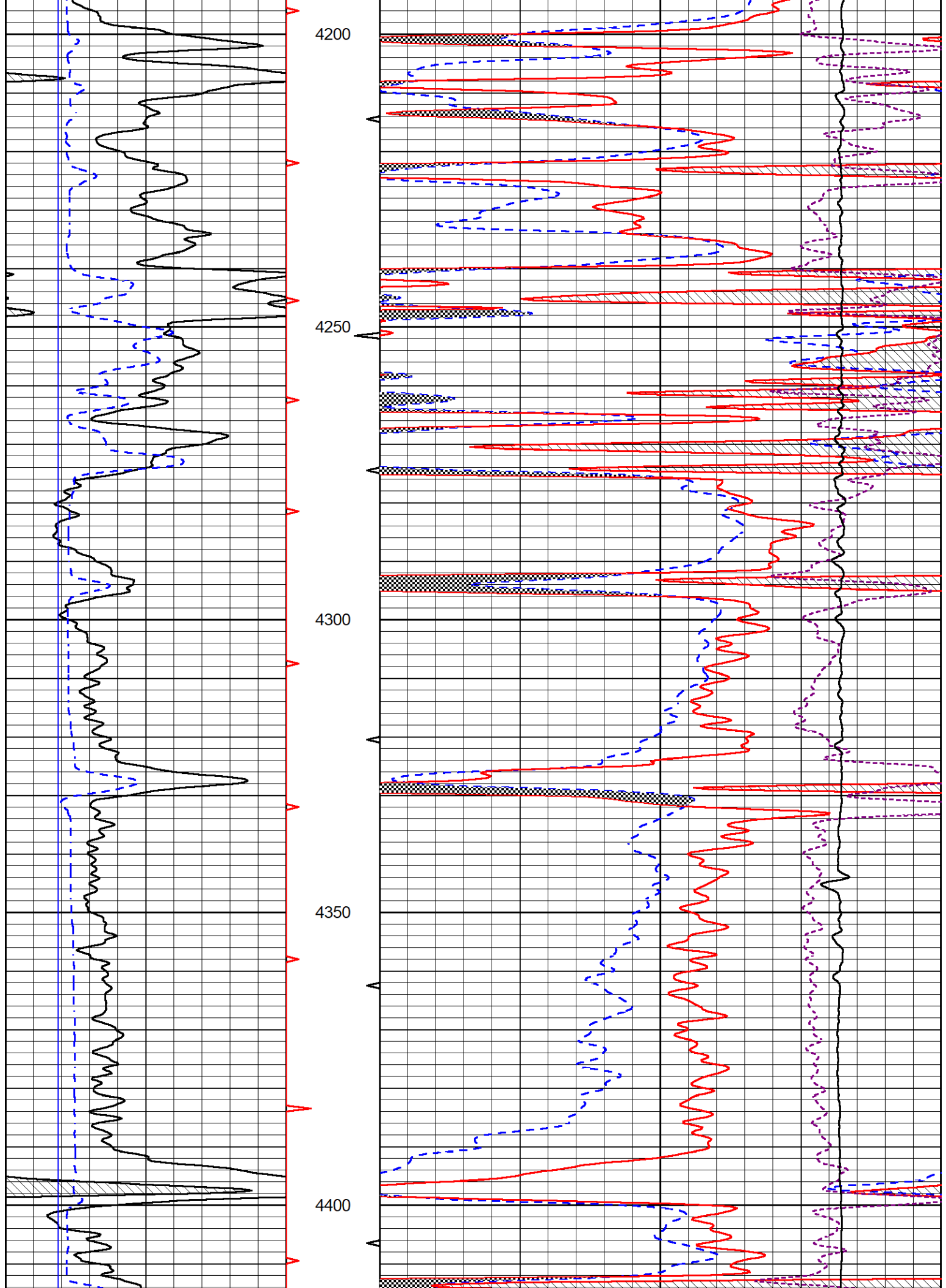
0	Gamma Ray (GAPI)	150
6	Caliper (in)	16
2.875	DCAL (in)	7.875

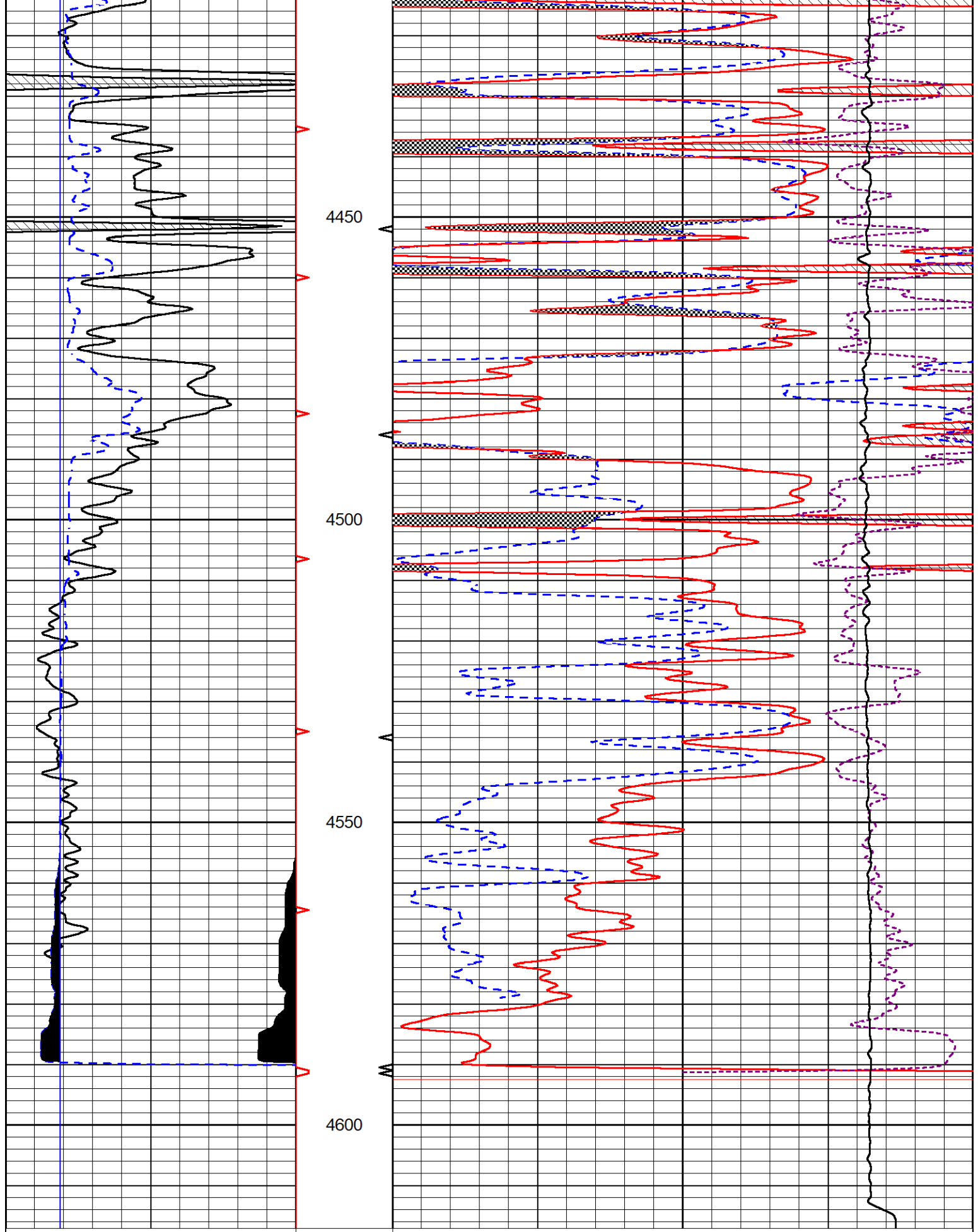
30	Compensated Neutron (pu)	-10	
30	Compensated Density (pu)	-10	
10000	Line Tension (lb)	0	
	-0.25	Correction (g/cc)	0.25











4450

4500

4550

4600

0	Gamma Ray (GAPI)	150
6	Caliper (in)	16
2.875	DCAL (in)	7.875

30	Compensated Neutron (pu)	-10
30	Compensated Density (pu)	-10
10000	Line Tension (lb)	0
-0.25	Correction (g/cc)	0.25



MIDWEST WIRELINE

# REPEAT SECTION

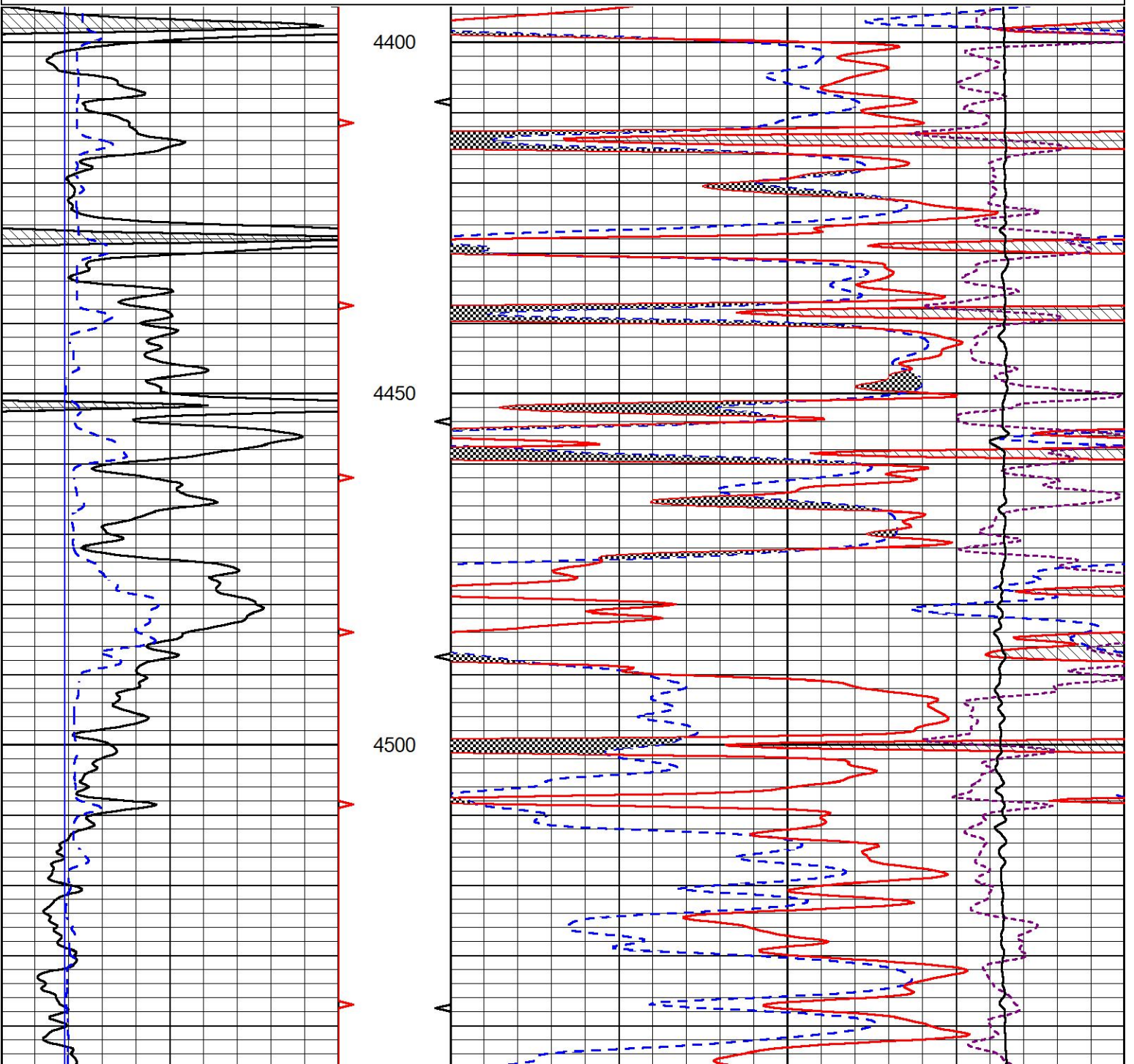
## REPEAT PASS

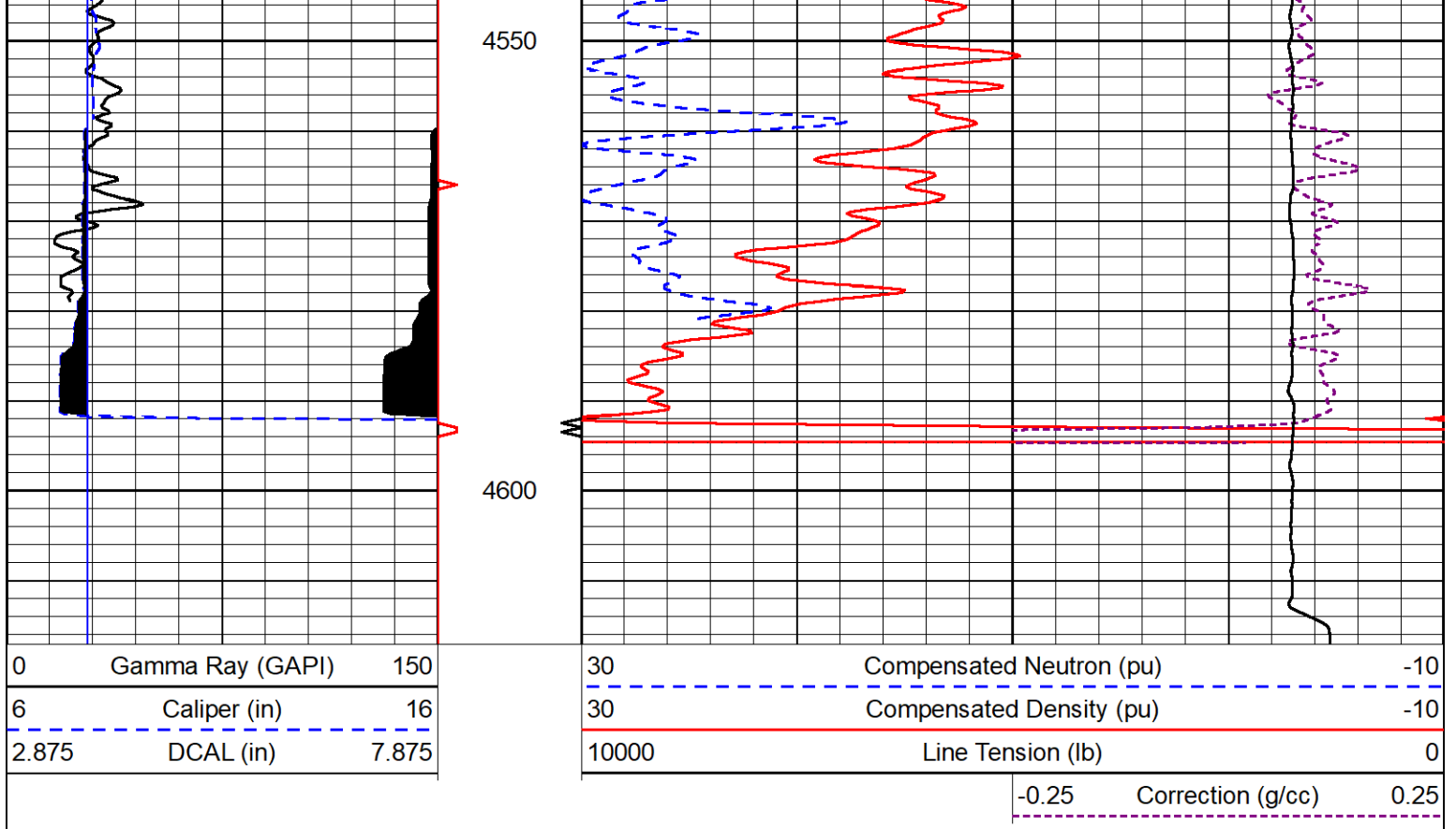
Database File weilert\_horacek #1.db  
 Dataset Pathname StkMI/pass2.1  
 Presentation Format \_CNDLS~1  
 Dataset Creation Sun Nov 12 16:26:55 2023  
 Charted by Depth in Feet scaled 1:240

0	Gamma Ray (GAPI)	150
6	Caliper (in)	16
2.875	DCAL (in)	7.875

30	Compensated Neutron (pu)	-10
30	Compensated Density (pu)	-10
10000	Line Tension (lb)	0

-0.25 Correction (g/cc) 0.25





### Calibration Report

Database File weilert\_horacek #1.db  
 Dataset Pathname StkMI/pass3.1  
 Dataset Creation Sun Nov 12 17:10:47 2023

### Dual Induction Calibration Report

Serial-Model: 507-M&W  
 Surface Cal Performed:

Loop:	Readings		References			Results	
	Air	Loop	Air	Loop	mmho/m	m	b
Deep	68.570	638.100	0.000	255.800	mmho/m	0.500	-37.000
Medium	184.288	716.191	0.000	255.800	mmho/m	0.450	-79.000

### Microlog Calibration Report

Serial-Model: 401-PSIML  
 Performed: Mon Sep 25 22:02:56 2023

	Readings		References			Results	
	Zero	Cal	Zero	Cal	Ohm-m	m	b
Normal	0.0000	1.0000	0.0000	1.0000	Ohm-m	18500.0000	-1.0000
Inverse	0.0000	1.0000	0.0000	1.0000	Ohm-m	17000.0000	-0.7500
Caliper	1.0052	1.0858	5.0000	16.5000	in	142.7190	-138.8600

### Compensated Density Calibration Report

Serial-Model: 307-25-M&W  
 Source / Verifier: 20762B / 2ci  
 Master Calibration Performed: Mon Oct 16 02:22:39 2023  
 Refer Survey Verification Performed:

Before Survey Verification Performed.  
After Survey Verification Performed:

Master Calibration

	Density		Far Detector	Near Detector	
Magnesium	1.680	g/cc	4567.03	5405.52	cps
Aluminum	2.570	g/cc	1004.45	3659.64	cps
Spine Angle = 75.56			Density/Spine Ratio = 0.569		
	Size		Reading		
Small Ring	6.00	in	1.16		
Large Ring	18.00	in	1.01		

Compensated Neutron Calibration Report

Serial Number: 207  
Tool Model: M&W

CALIBRATION

Detector	Readings	Target	Normalization
Short Space	6240.00 cps	1000.00 cps	1.6025
Long Space	460.00 cps	1000.00 cps	1.9500

PRE-SURVEY VERIFICATION

	Detector	Readings	Measured	Target
1)	Short Space	cps		
	Long Space	cps	pu	pu
2)	Short Space	cps		
	Long Space	cps	pu	
3)	Short Space	cps		
	Long Space	cps	pu	

POST-SURVEY VERIFICATION

	Detector	Readings	Measured	Target
1)	Short Space	cps		
	Long Space	cps	pu	pu
2)	Short Space	cps		
	Long Space	cps	pu	pu
3)	Short Space	cps		
	Long Space	cps	pu	pu

Gamma Ray Calibration Report

Serial Number: 102  
Tool Model: M&W  
Performed: Mon Sep 25 22:02:33 2023

Calibrator Value: 1.0 GAPI

Background Reading: 0.0 cps  
Calibrator Reading: 1.0 cps

Sensitivity: 0.5250 GAPI/cps



MIDWEST WIRELINE

Company	Micheal D. Weilert Oil Company
Well	Horacek #1
Field	Wildcat
County	Ness
State	Kansas