



MIDWEST WIRELINE

DUAL INDUCTION

Company **Michael D. Weilert Oil Company**
 Well **Horacek #1**
 Field **Wildcat**
 County **Ness** State **Kansas**

Location: API #: 15-135-26213-00-00
 NE NW
 4620 FSL & 3300 FEL
 SEC 19 TWP 16S RGE 25W
 Permanent Datum Ground Level Elevation 2574
 Log Measured From Kelly Bushing
 Drilling Measured From Kelly Bushing
 Other Services
 CNL/CDL
 MEL
 Elevation
 K.B. 2579
 D.F.
 G.L. 2574

Date	11/12/2023
Run Number	One
Depth Driller	4610
Depth Logger	4613
Bottom Logged Interval	4612
Top Log Interval	250
Casing Driller	8.625 @ 261
Casing Logger	262
Bit Size	7.875
Type Fluid in Hole	Chemical
Salinity, ppm CL	7000
Density / Viscosity	9.3 47
pH / Fluid Loss	9.1 12.0
Source of Sample	Flowline
Rm @ Meas. Temp	0.8 @ 70
Rmt @ Meas. Temp	0.6 @ 70
Rmc @ Meas. Temp	1.08 @ 70
Source of Rmf / Rmc	Charts
Rm @ BHT	0.46 @ 122
Operating Rig Time	2.5 Hours
Max Rec. Temp. F	122
Equipment Number	P-24
Location	Hays
Recorded By	T. Martin
Witnessed By	Michael Weilert

<<< Fold Here >>>

All interpretations are opinions based on inferences from electrical or other measurements and Midwest Wireline LLC cannot and does not guarantee the accuracy or correctness of any interpretation, and Midwest Wireline LLC will not be liable or responsible for any loss, costs, damages, or expenses incurred or sustained by anyone resulting from any interpretation made by any of our officers, agents or employees.

Comments

N/A DENOTES NOT AVAILABLE OR NON-APPLICABLE.

Utica, KS, 2 E to F Rd,
 1/2 E, S into

Log Measured From: Kelly Bushing 5 Ft. Above Permanent Datum

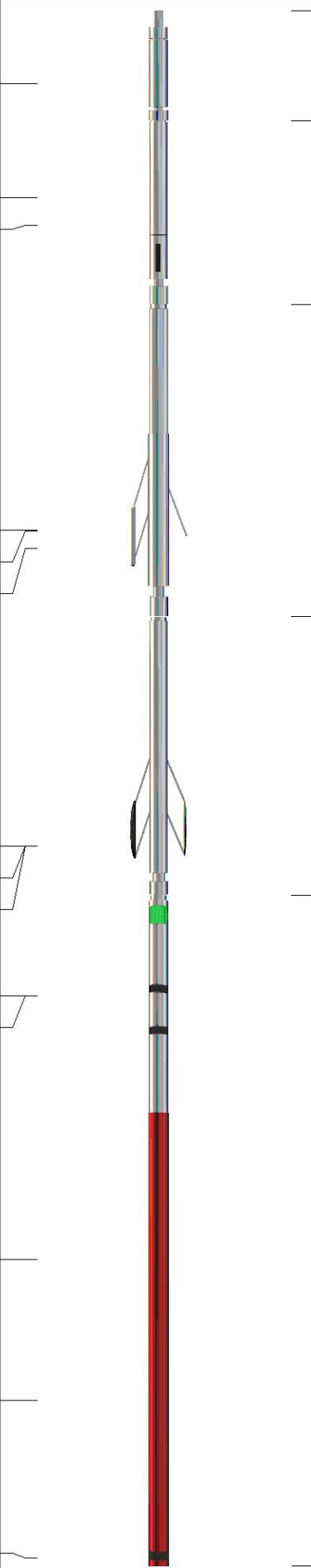
THANK YOU FOR USING MIDWEST WIRELINE LLC
 785-625-3858

Your Midwest Wireline Crew

Engineer: T. Martin
 Operator:
 Operator:
 Operator:

This Log Record Was Witnessed By

Primary Witness: Micheal Weilert
 Secondary Witness: Jerry Green
 Secondary Witness:
 Secondary Witness:

Sensor	Offset (ft)	Schematic	Description	Length (ft)	O.D. (in)	Weight (lb)
GR	40.33		GR-M&W (102)	3.00	3.50	50.00
CNLSC CNSSC	37.23 36.48		CNT-M&W (207)	5.00	3.50	100.00
LSD DCAL SSD	28.18 28.17 27.68		CDL-M&W (307-25)	8.50	4.00	250.00
MCAL MI MN	19.58 19.58 19.58		ML-PSIML (401)	7.58	4.00	65.00
RLL3F RLL3	15.50 15.50					
CILD	8.33		DIL-M&W (507)	18.25	3.50	220.00
CILM	4.50					
SP	0.20					

Dataset: weilert_horacek #1.db: field/well/StkMI/pass3.1
 Total length: 42.33 ft
 Total weight: 685.00 lb
 O.D.: 4.00 in

Log Variables

DatabaseC:\ProgramData\Warrior\Data\weilert_horacek #1.db
 Dataset field/well/StkMI/pass3.1/_vars_

Top - Bottom

BOREID in 7.875	BOTTEMP degF 122	CASEOD in 5.5	CASETHCK in 0	FLUIDDEN g/cc 1	MATRXDEN g/cc 2.71	NPORSEL Limestone	PERFS No
SNDERR mmho/m 0	SNDERRM mmho/m 0	SPSHIFT mV 240	SRFTEMP degF 60	SZCOR Off	TDEPTH ft 4613		

Variable Description

BOREID : Borehole I.D.
 BOTTEMP : Bottom Hole Temperature
 CASEOD : Casing O.D.
 CASETHCK : Casing Thickness
 FLUIDDEN : Fluid Density
 MATRXDEN : Matrix Density
 NPORSEL : Neutron Porosity Curve Select

PERFS : Perforation Flag
 SNDERR : Deep Sonde Error Correction
 SNDERRM : Medium Sonde Error Correction
 SPSHIFT : S.P. Baseline Offset
 SRFTEMP : Surface Temperature
 SZCOR : CN Size Cor. ?
 TDEPTH : Total Depth

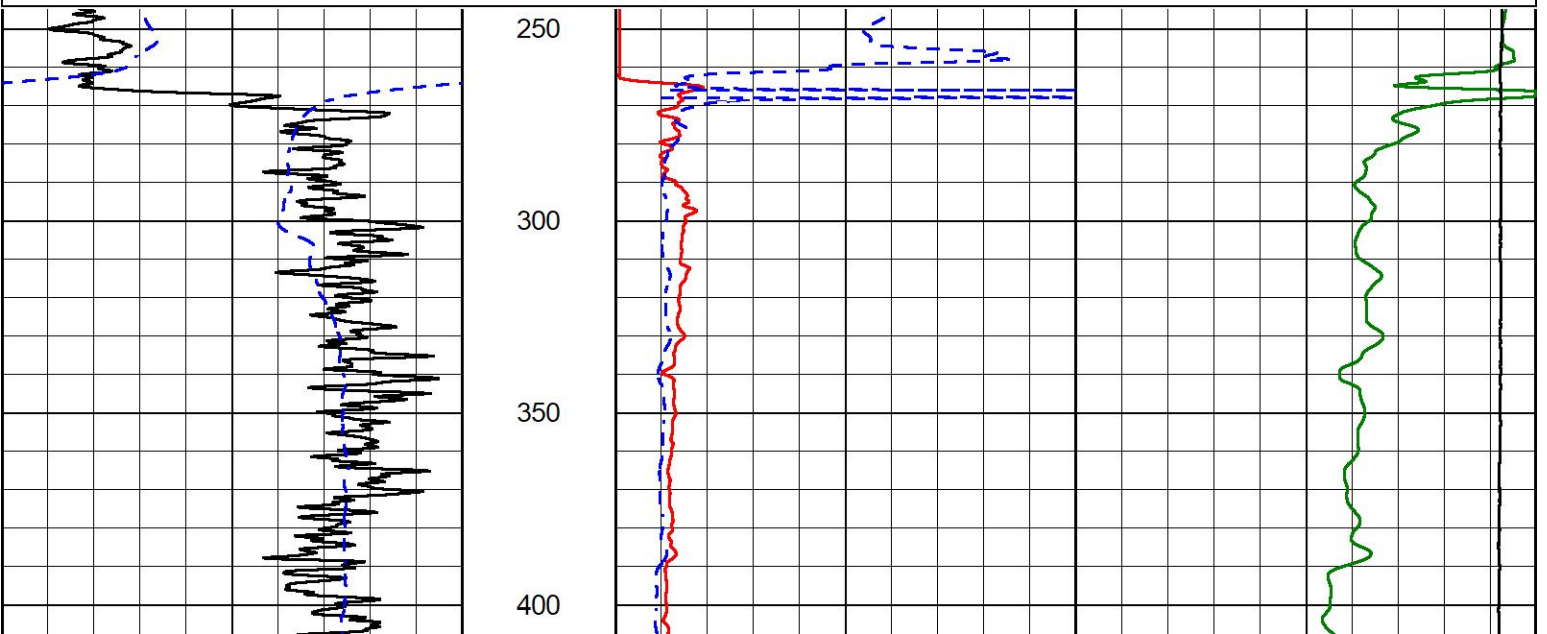


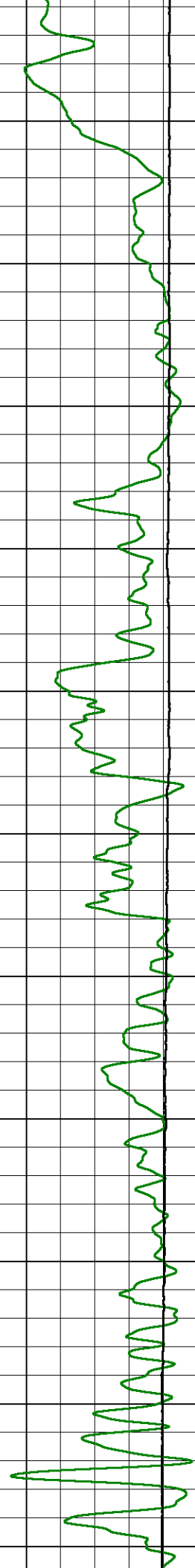
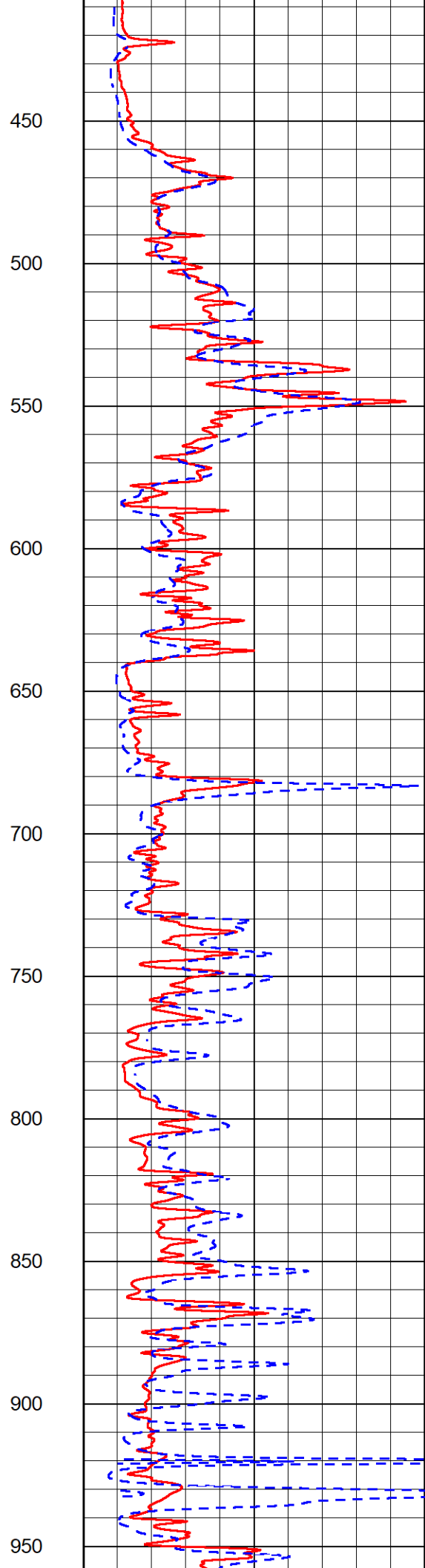
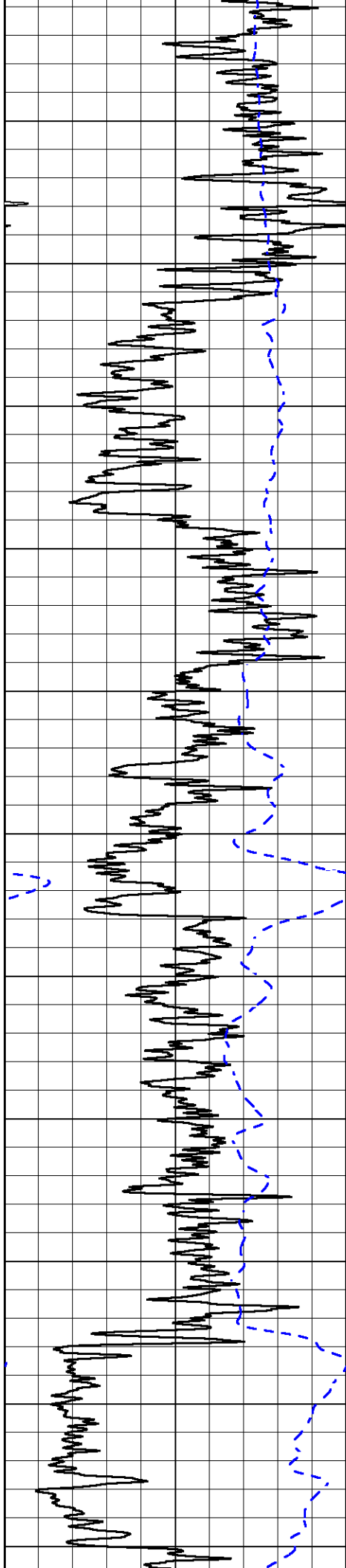
2" SCALE RESISTIVITY

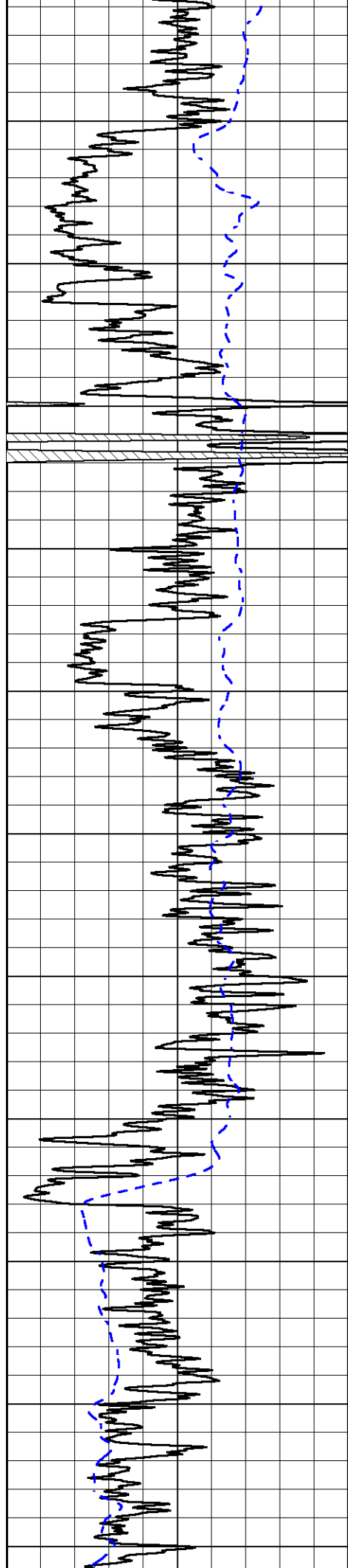
MAIN PASS

Database File weilert_horacek #1.db
 Dataset Pathname StkMI/pass3.2
 Presentation Format _dil2in
 Dataset Creation Sun Nov 12 17:10:25 2023
 Charted by Depth in Feet scaled 1:600

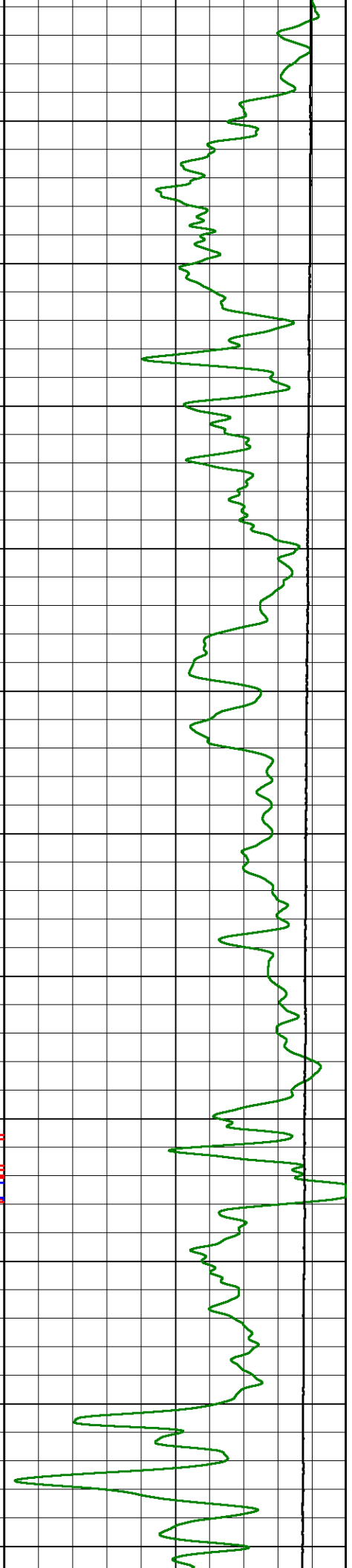
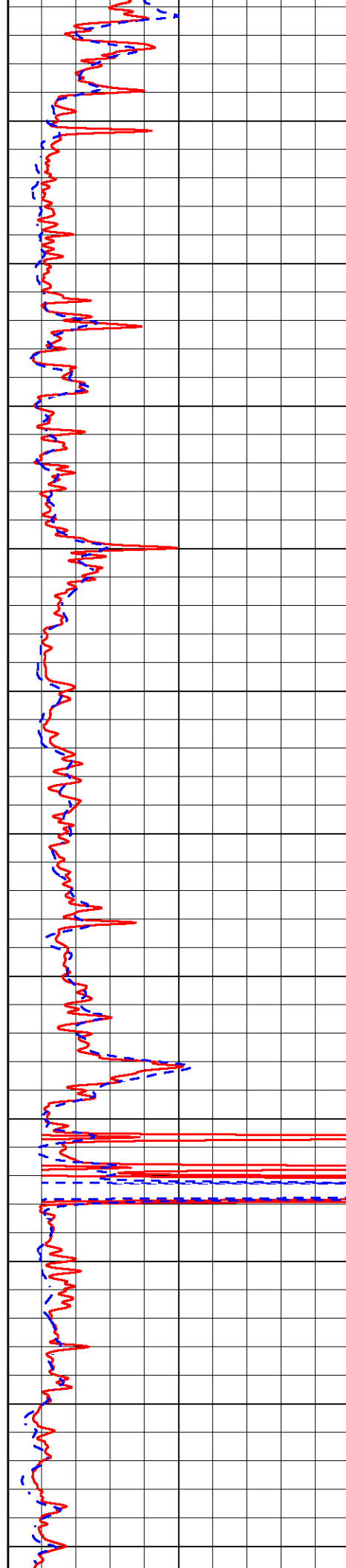
0	Gamma Ray (GAPI)	150	1000	Conductivity (mmho/m)	0
-200	SP (mV)	0	15000	Line Tension (lb)	0
			0	RLL3 (Ohm-m)	50
			0	Deep Resistivity (Ohm-m)	50
			50	RLL3 (Ohm-m)	200
			50	Deep Resistivity (Ohm-m)	200

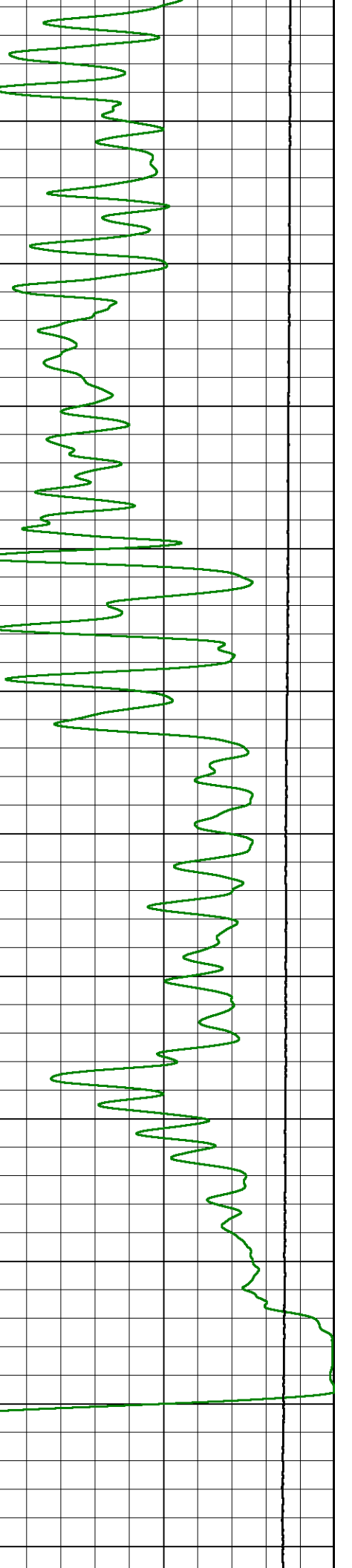
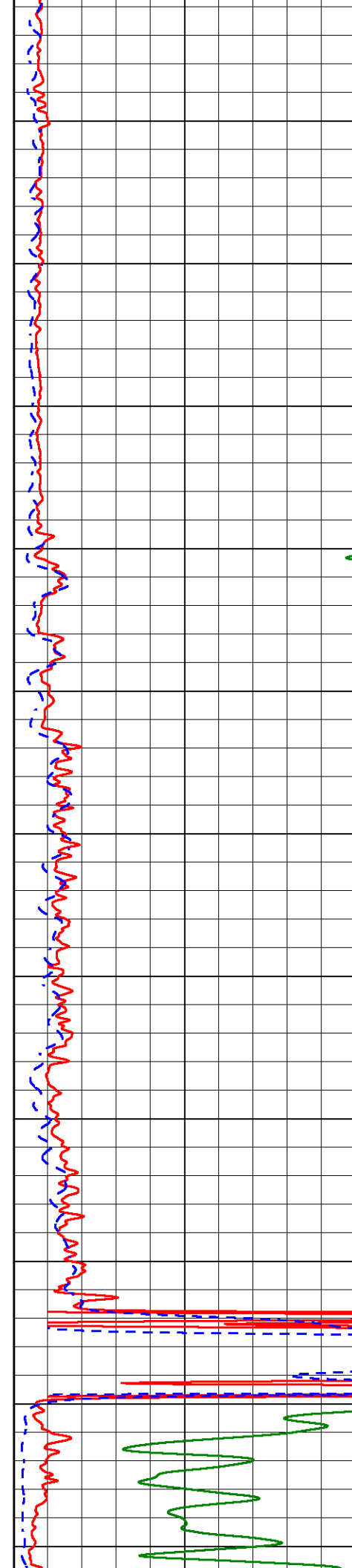
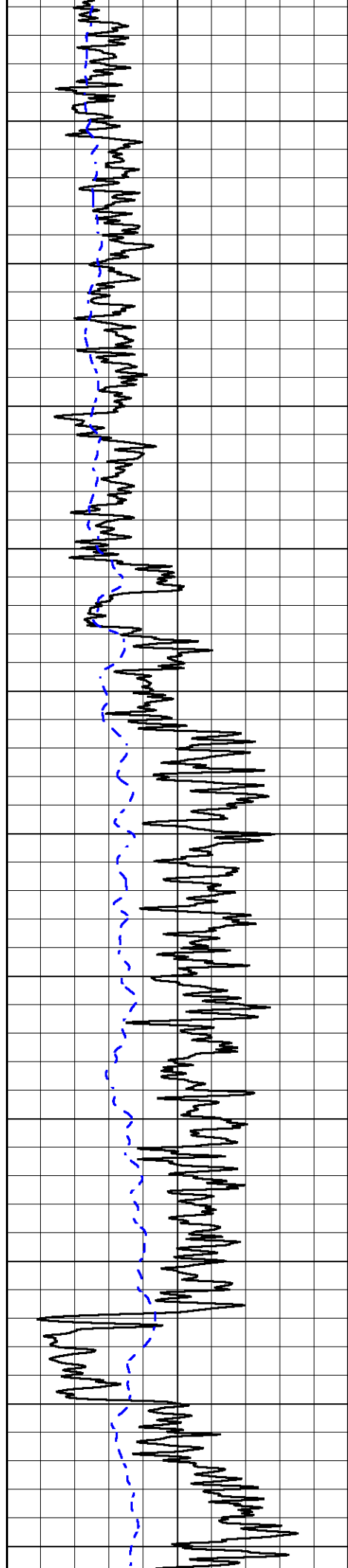


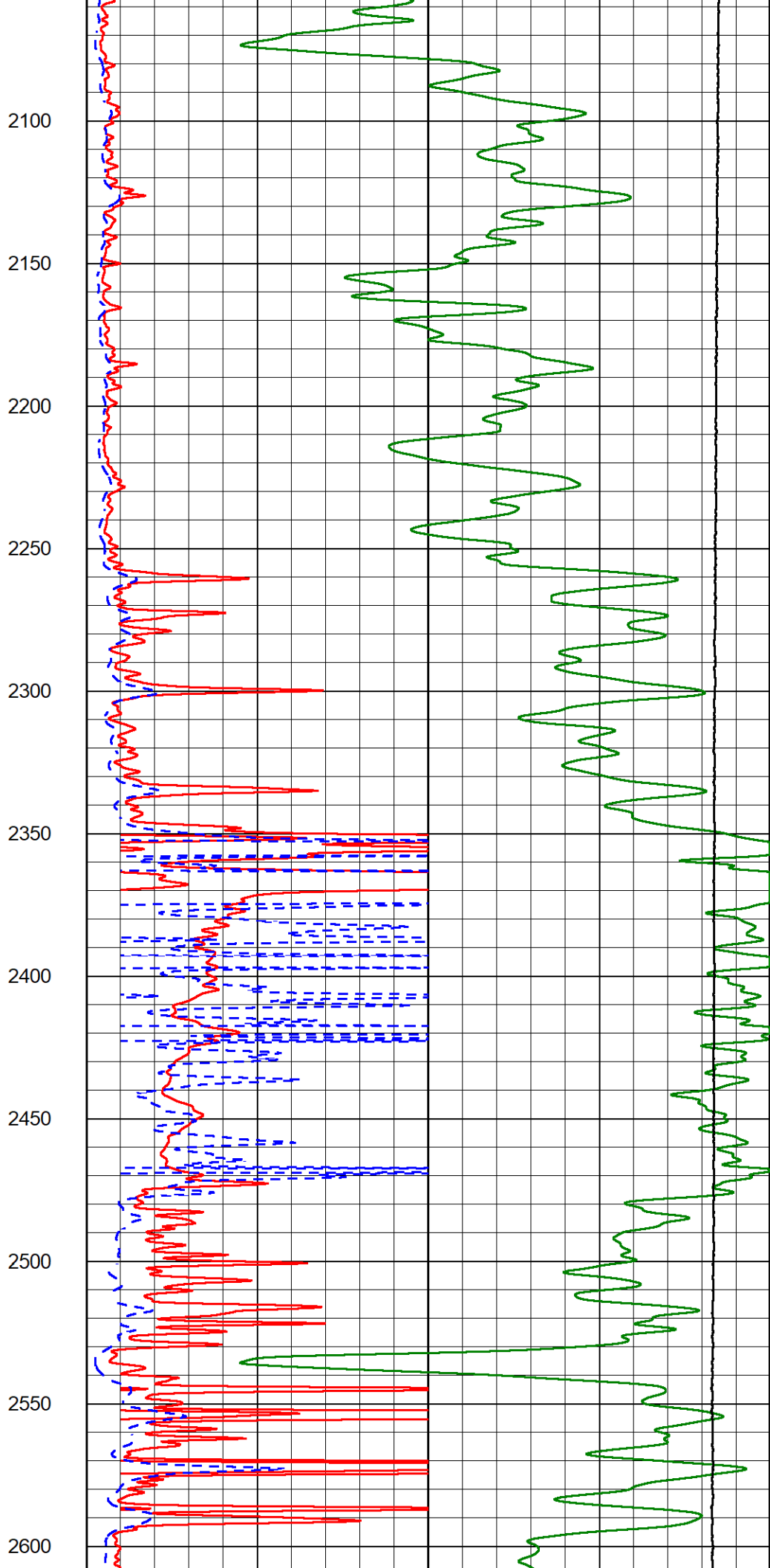
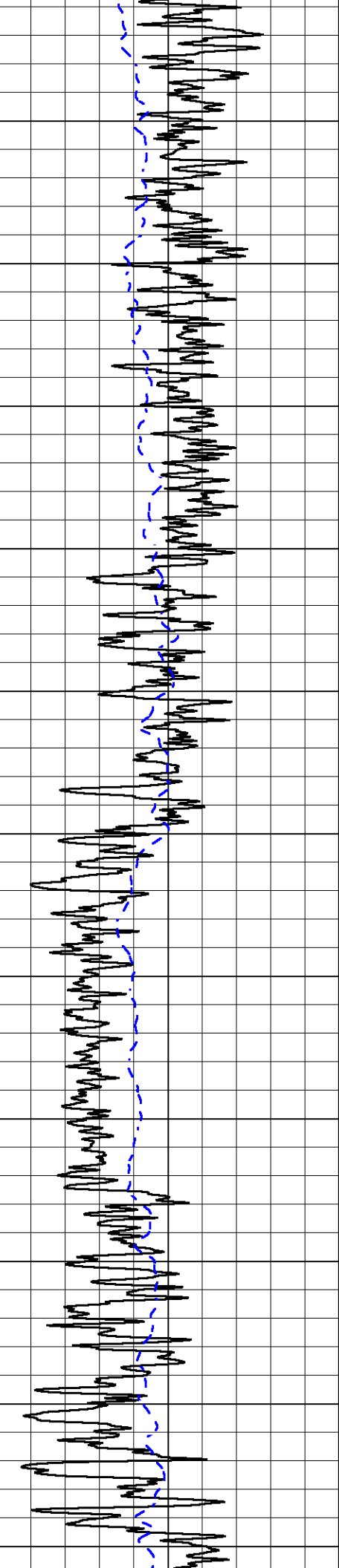


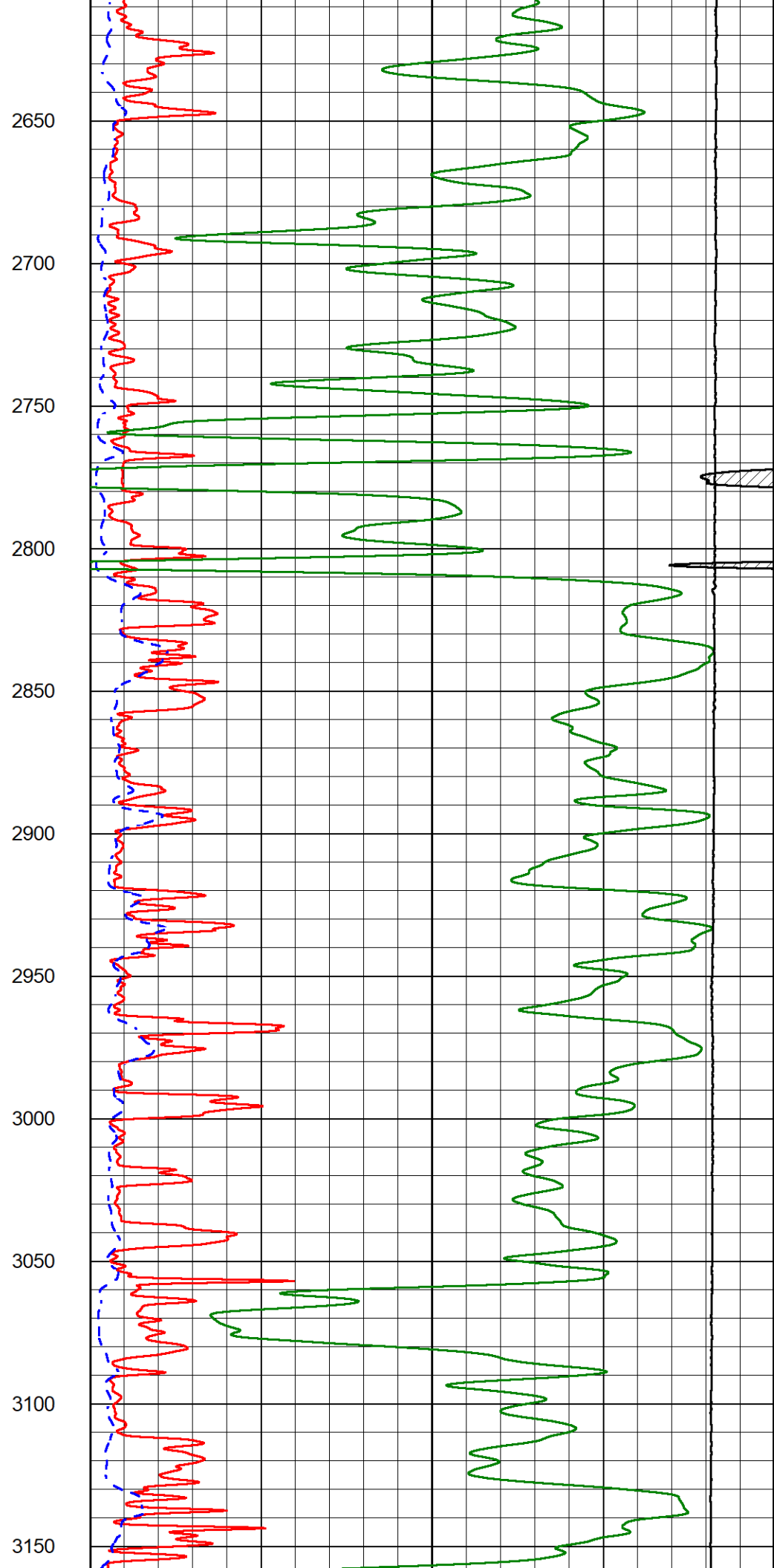
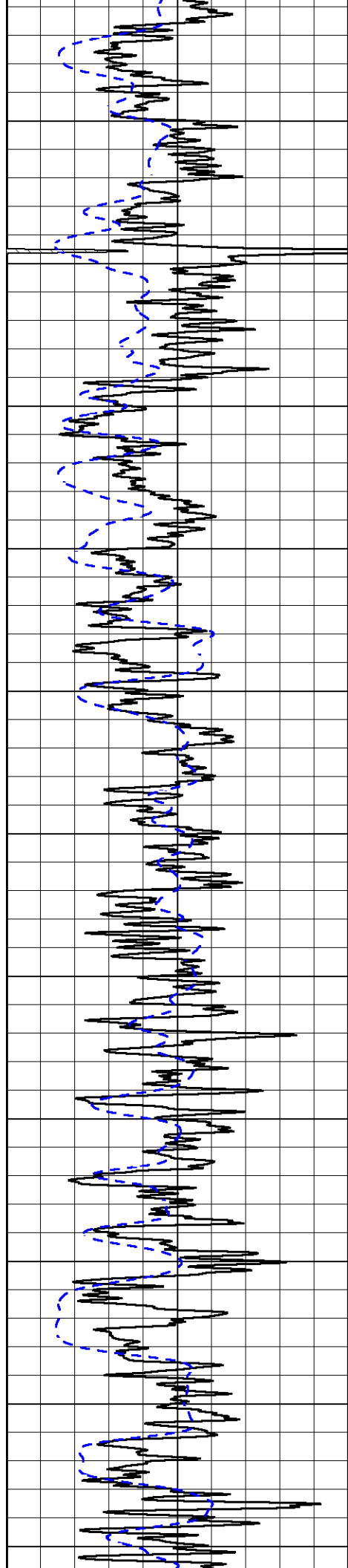


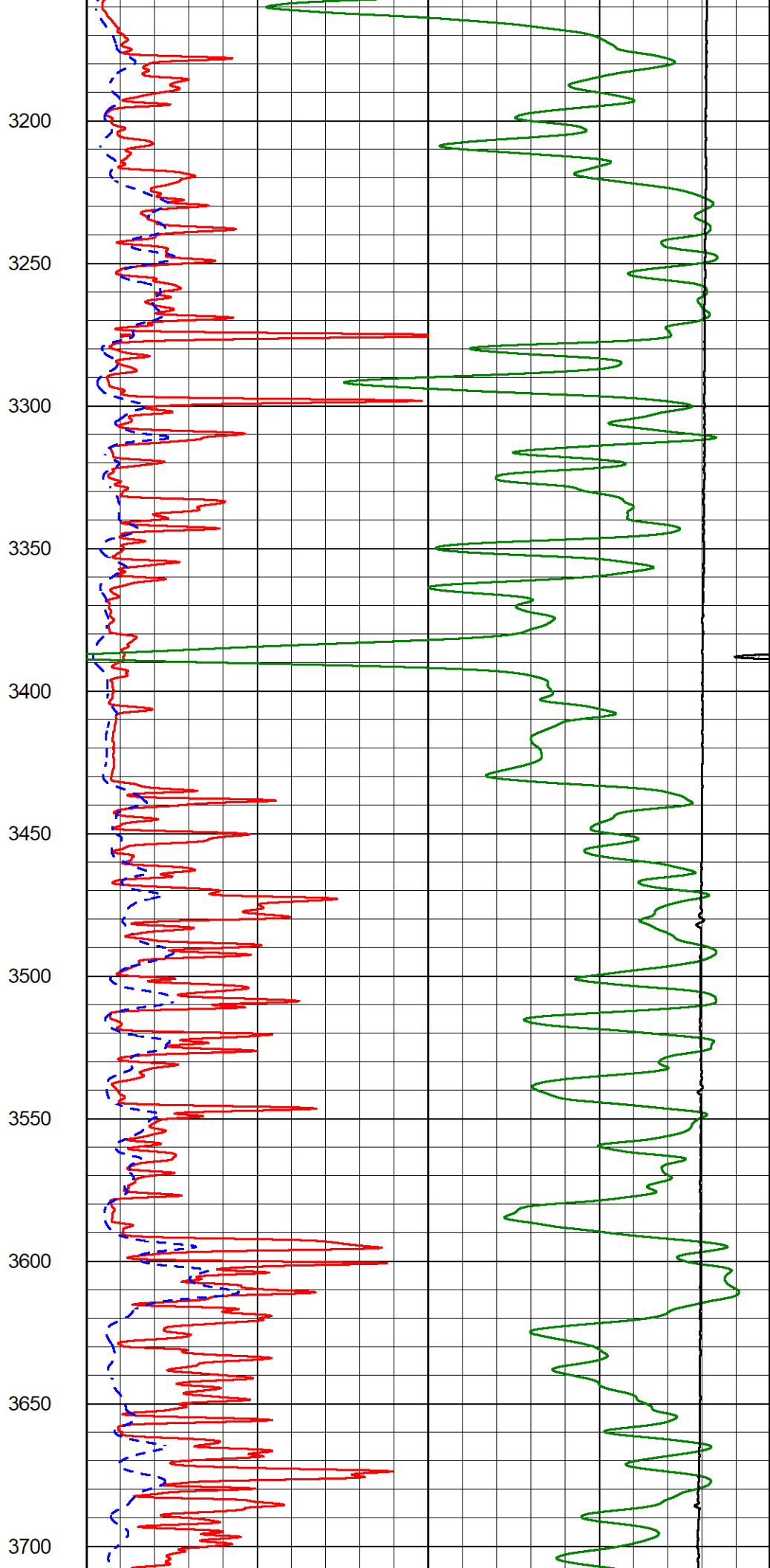
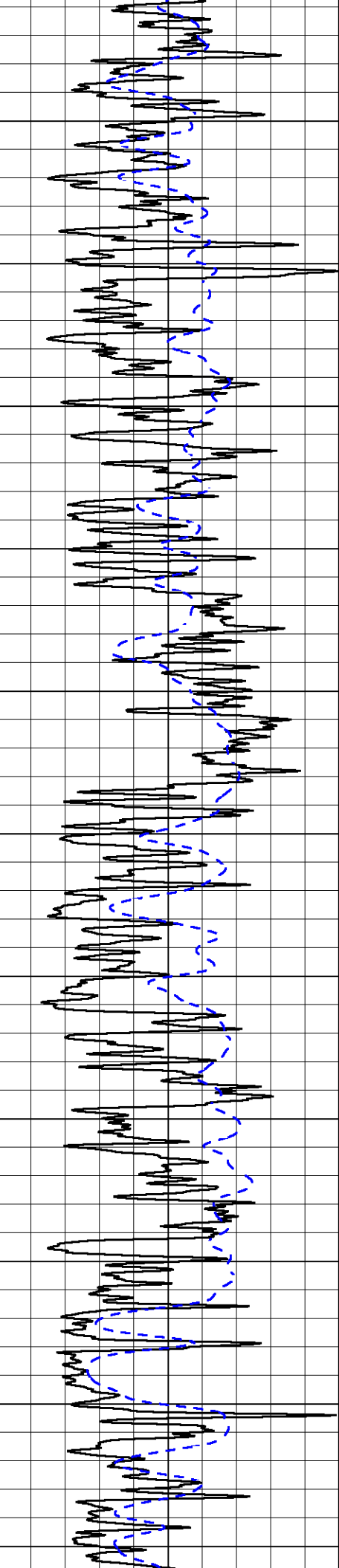
1000
1050
1100
1150
1200
1250
1300
1350
1400
1450
1500

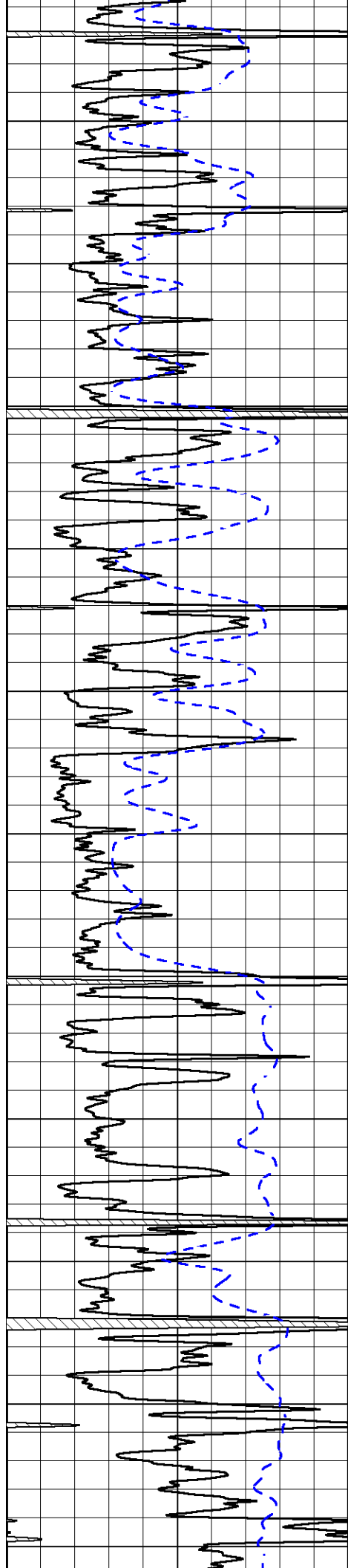












3750

3800

3850

3900

3950

4000

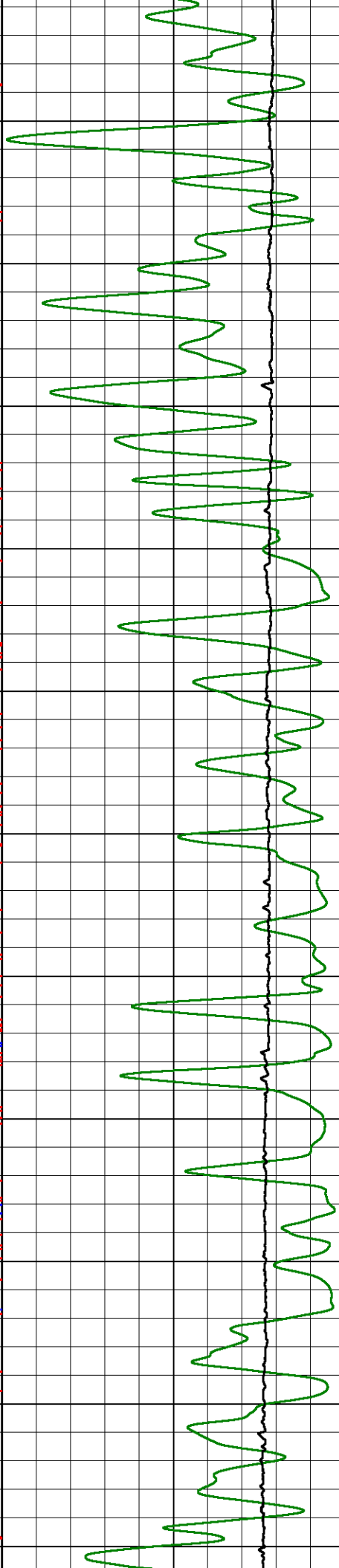
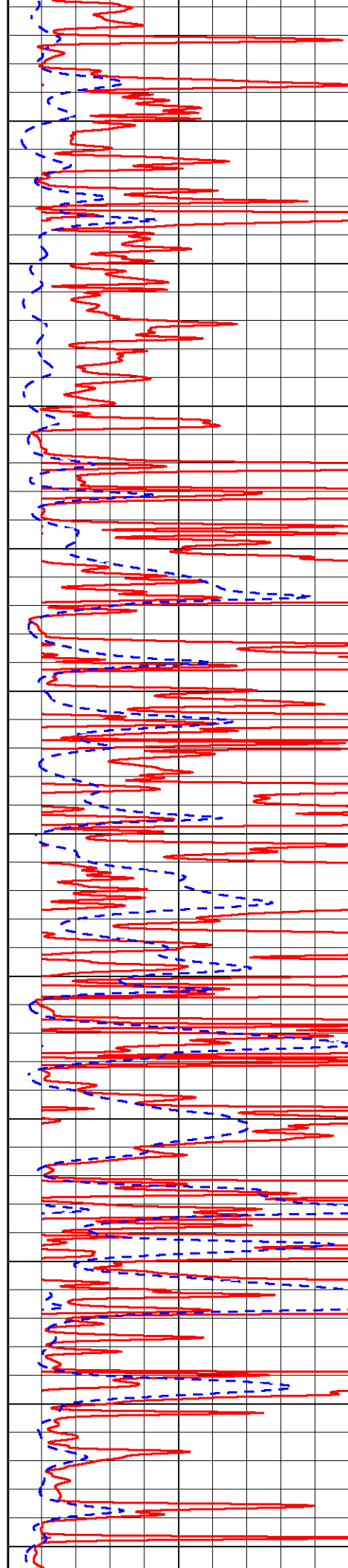
4050

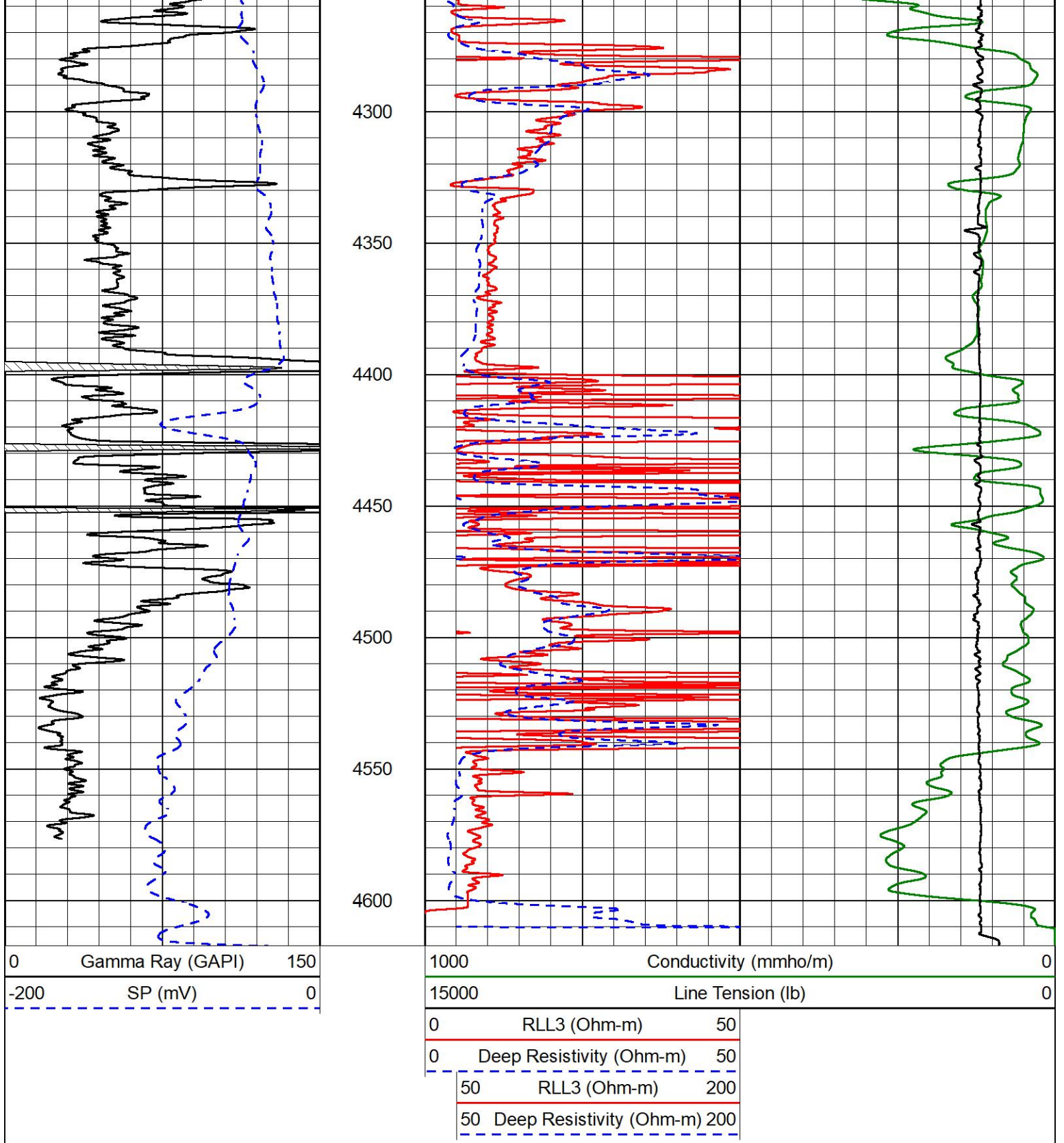
4100

4150

4200

4250





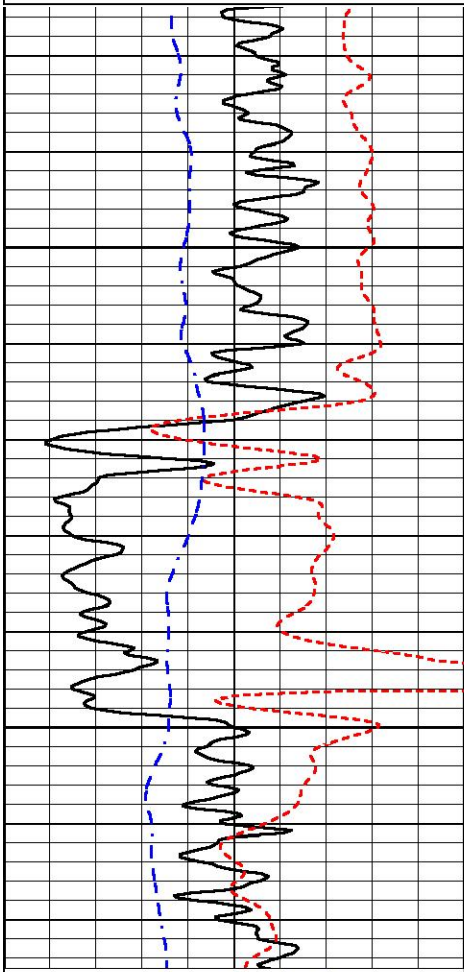
ANHYDRITE SECTION

MAIN PASS

Database File weilert_horacek #1.db
 Dataset Pathname StkMI/pass3.4
 Presentation Format _dil
 Dataset Creation Sun Nov 12 16:53:37 2023
 Charted by Depth in Feet scaled 1:240

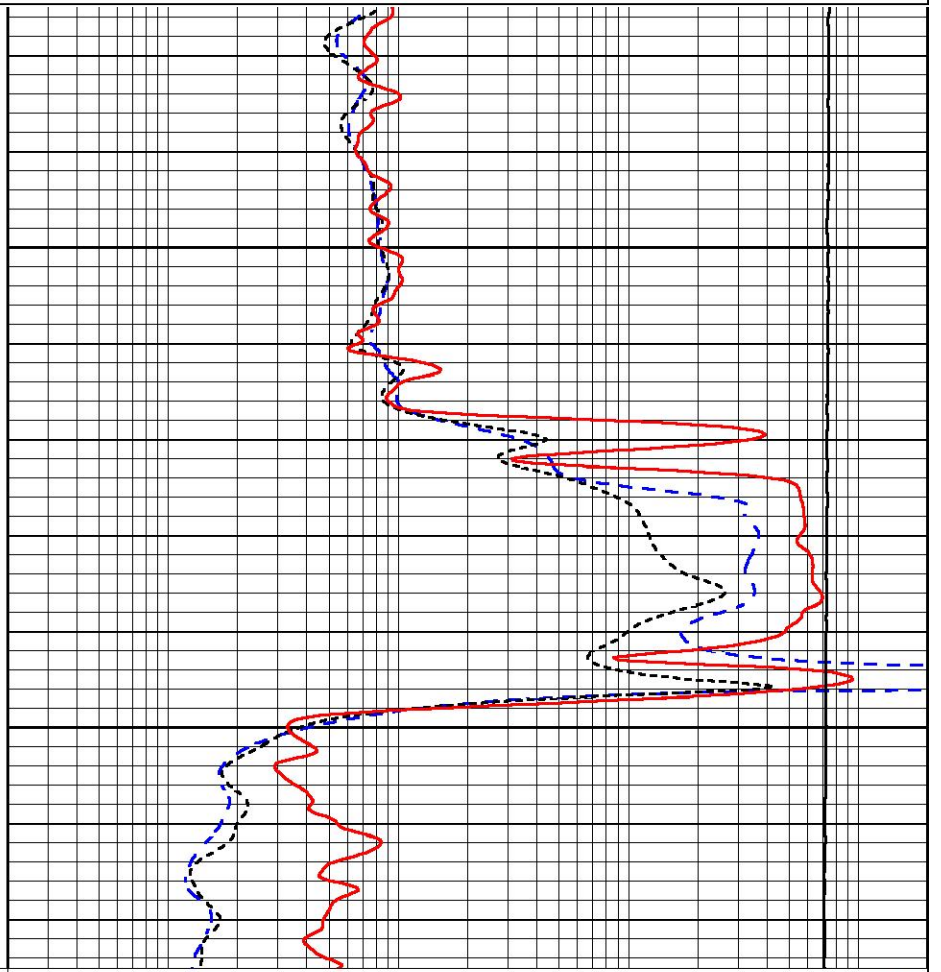
0	Gamma Ray (GAPI)	150
-160	RXORT	40
-200	SP (mV)	0

0.2	Deep Resistivity (Ohm-m)	2000
0.2	Medium Resistivity (Ohm-m)	2000
0.2	RLL3 (Ohm-m)	2000
10000	Line Tension (lb)	0



1950

2000



0	Gamma Ray (GAPI)	150
-160	RXORT	40
-200	SP (mV)	0

0.2	Deep Resistivity (Ohm-m)	2000
0.2	Medium Resistivity (Ohm-m)	2000
0.2	RLL3 (Ohm-m)	2000
10000	Line Tension (lb)	0



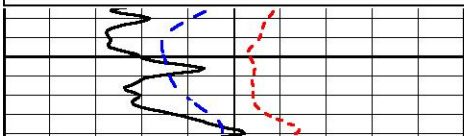
DETAIL SECTION

MAIN PASS

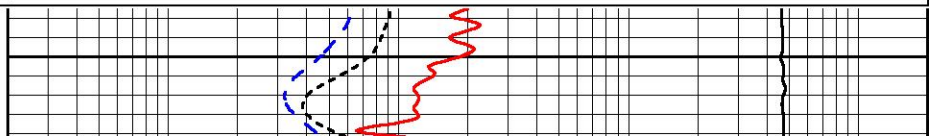
Database File weilert_horacek #1.db
 Dataset Pathname StkML/pass3.1
 Presentation Format _dil
 Dataset Creation Sun Nov 12 17:10:47 2023
 Charted by Depth in Feet scaled 1:240

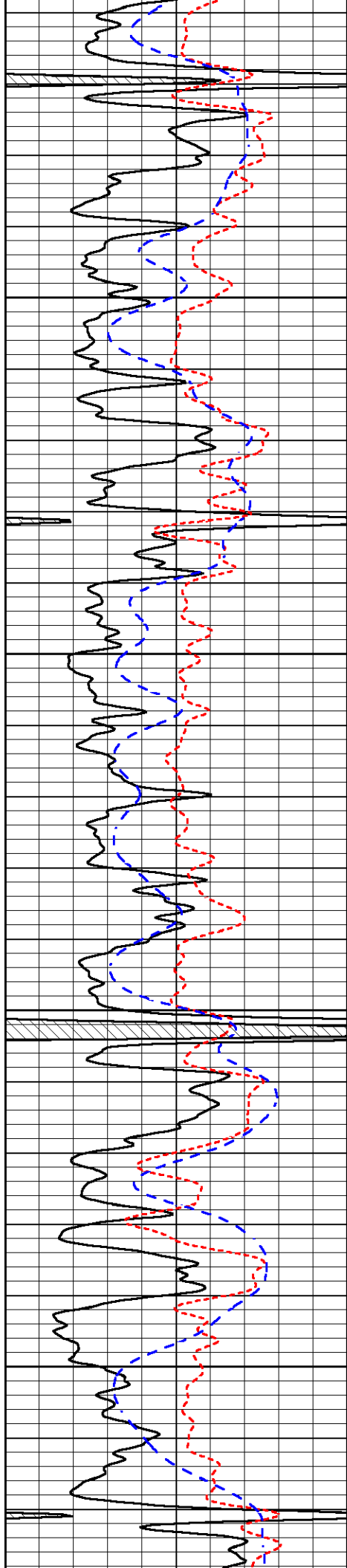
0	Gamma Ray (GAPI)	150
-160	RXORT	40
-200	SP (mV)	0

0.2	Deep Resistivity (Ohm-m)	2000
0.2	Medium Resistivity (Ohm-m)	2000
0.2	RLL3 (Ohm-m)	2000
10000	Line Tension (lb)	0



3700



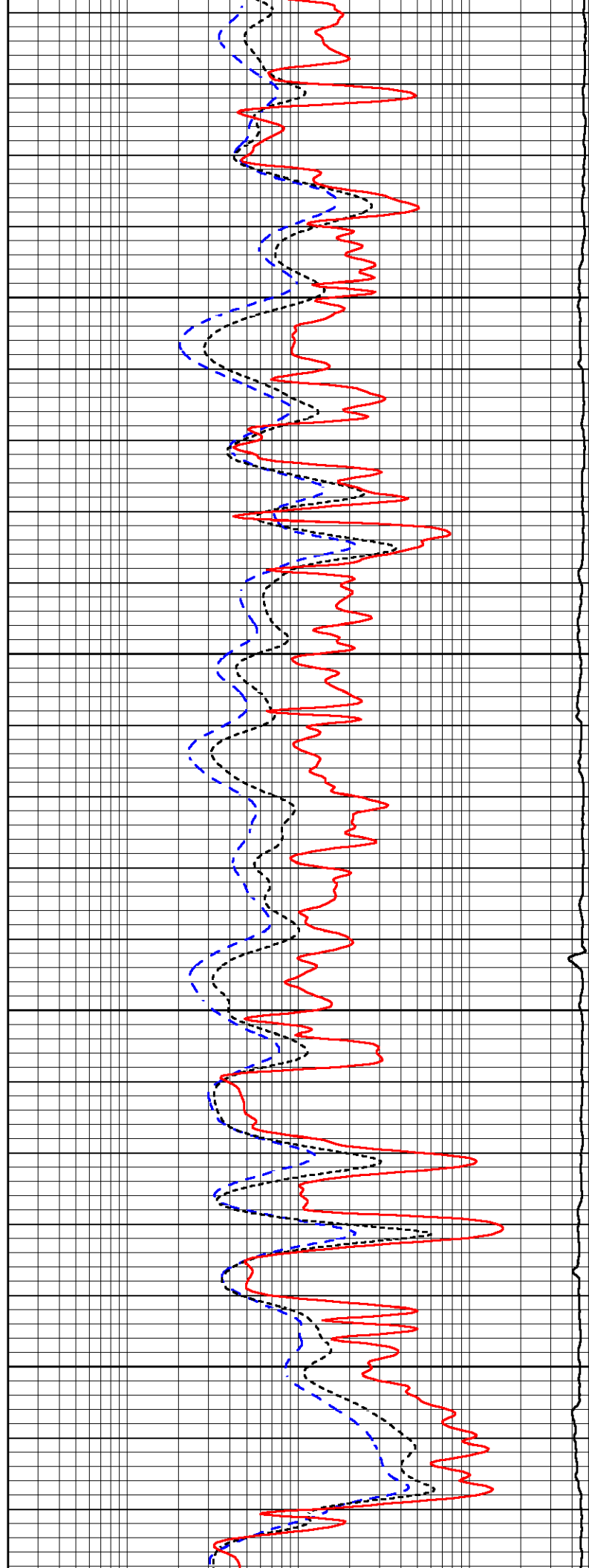


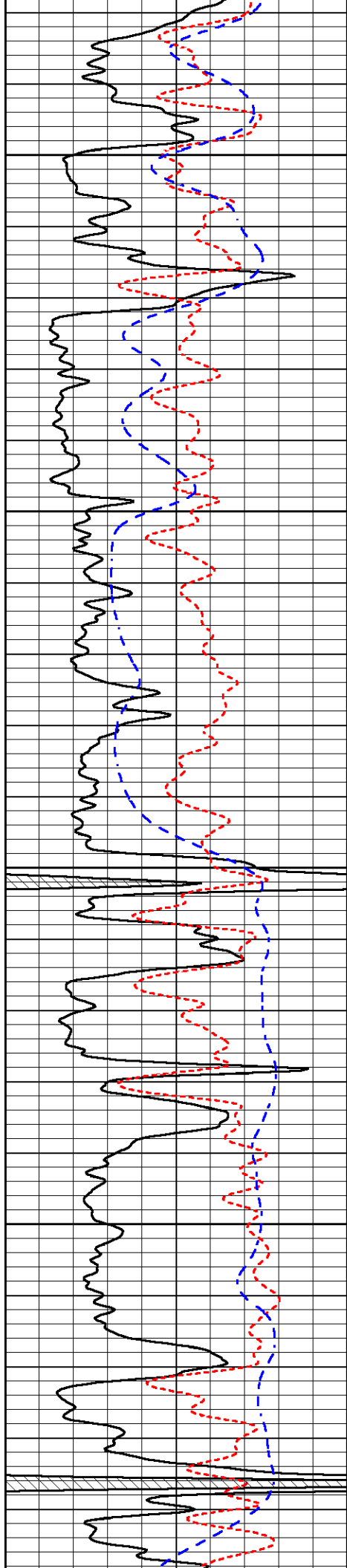
3750

3800

3850

3900



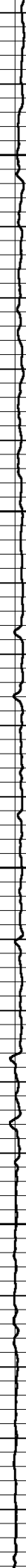
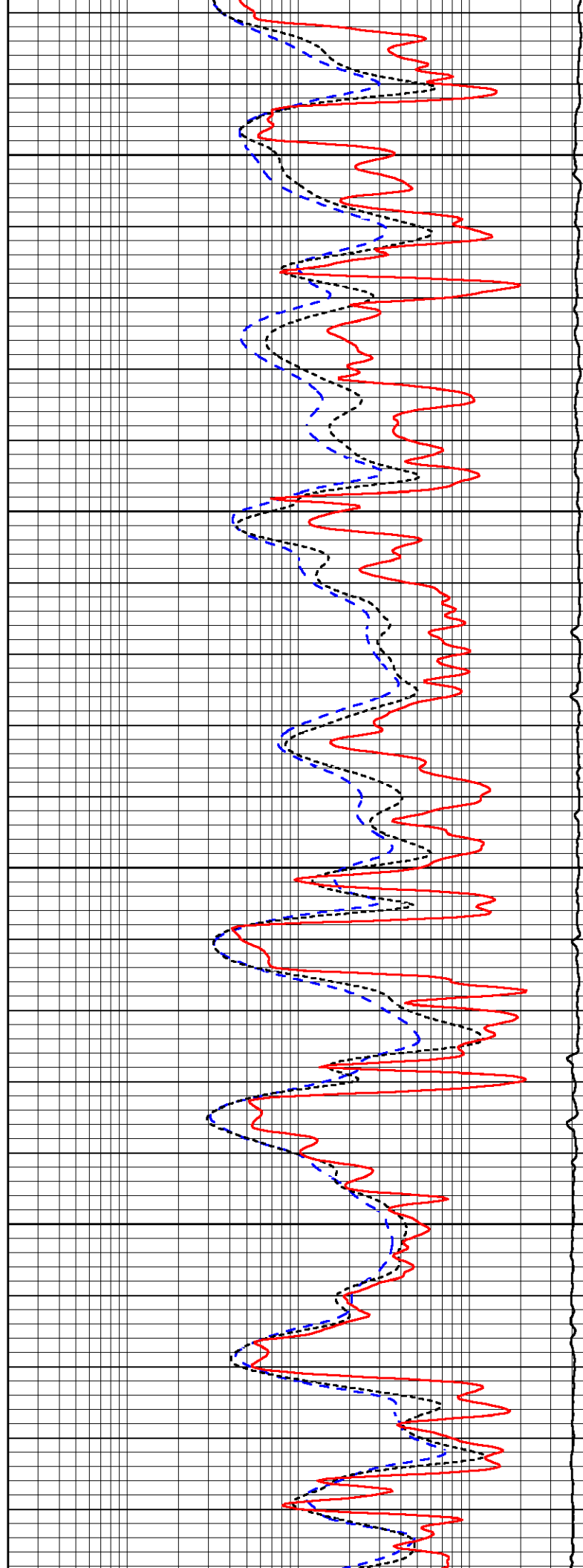


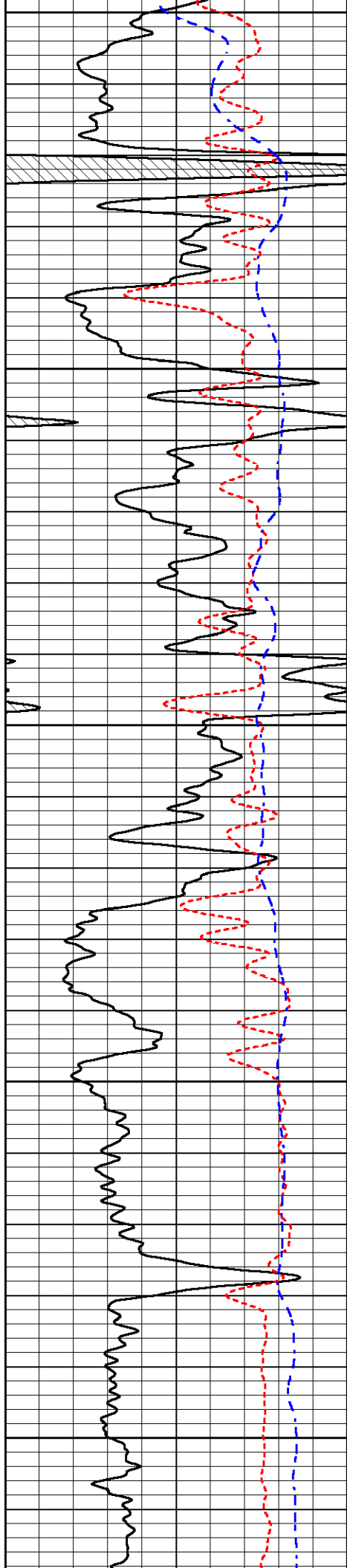
3950

4000

4050

4100





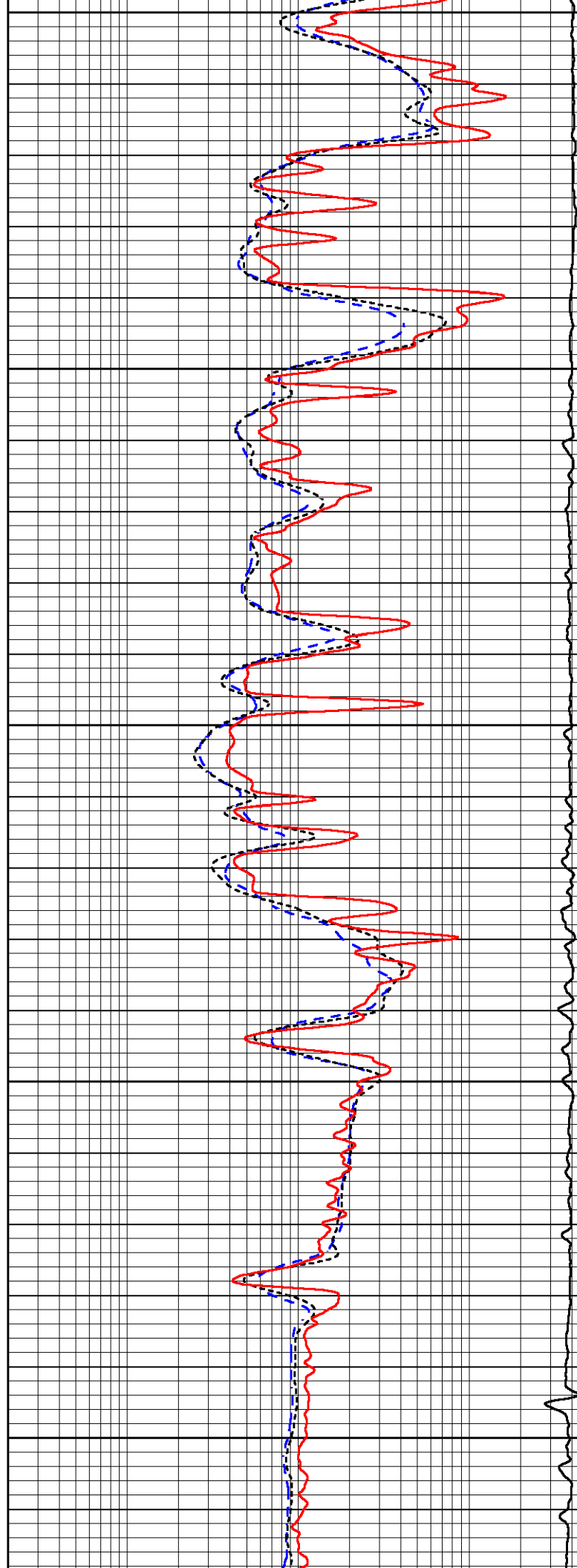
4150

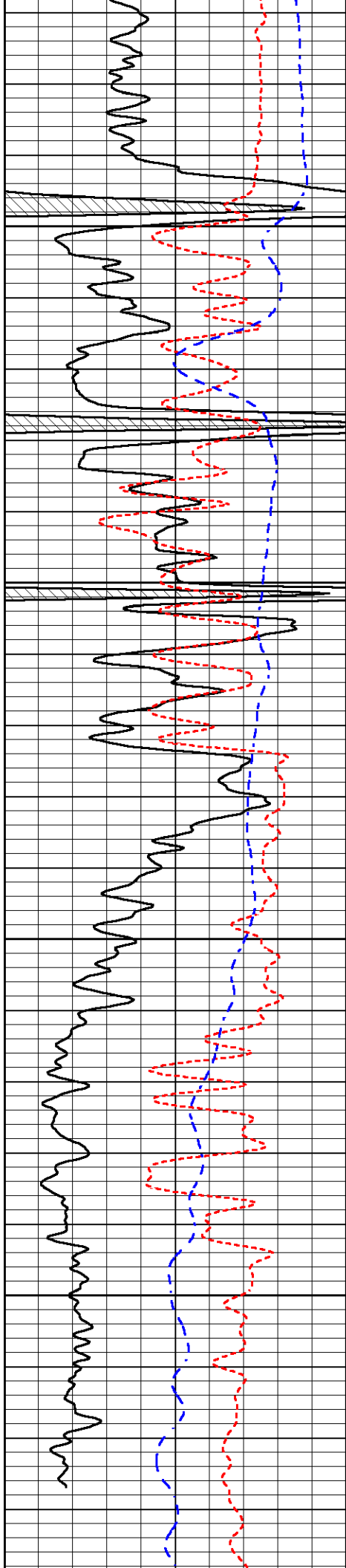
4200

4250

4300

4350



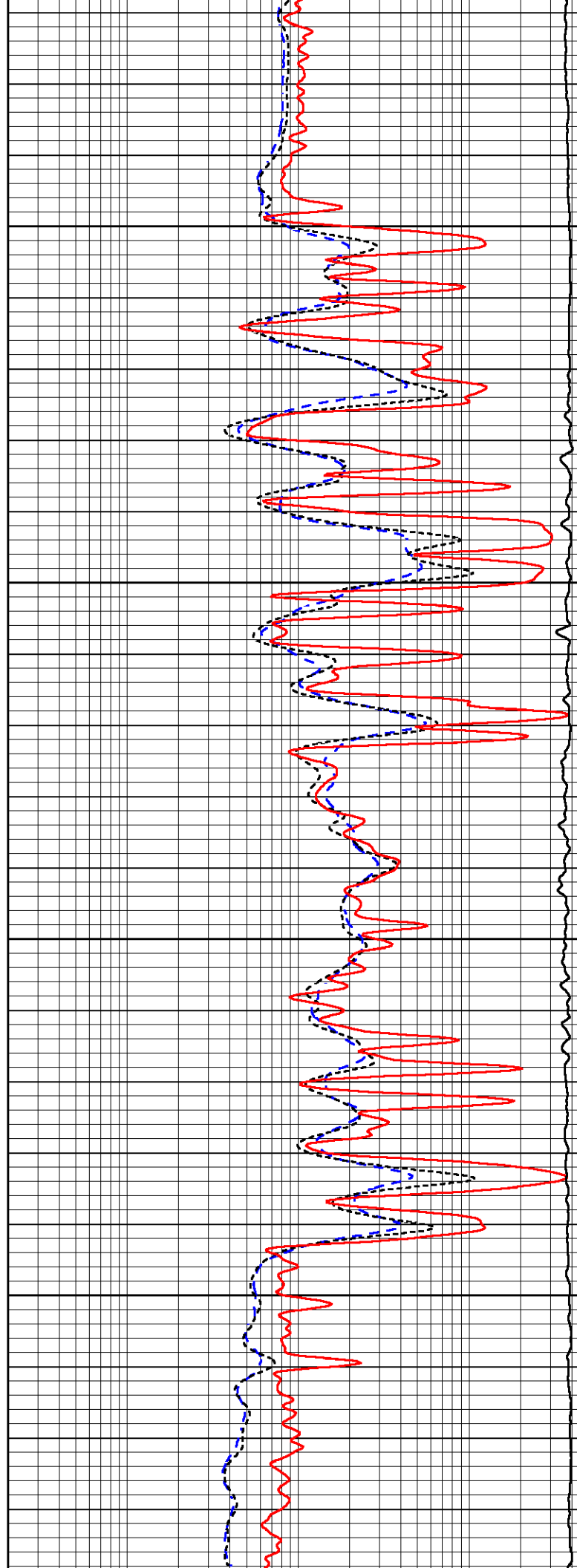


4400

4450

4500

4550

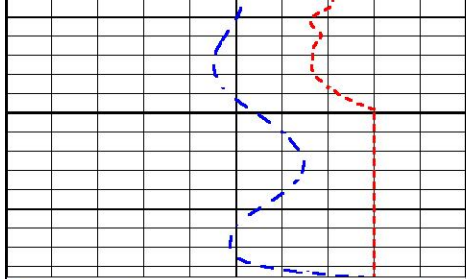


4400

4450

4500

4550



4600

0	Gamma Ray (GAPI)	150
-160	RXORT	40
-200	SP (mV)	0



0.2	Deep Resistivity (Ohm-m)	2000
0.2	Medium Resistivity (Ohm-m)	2000
0.2	RLL3 (Ohm-m)	2000
10000	Line Tension (lb)	0



MIDWEST WIRELINE

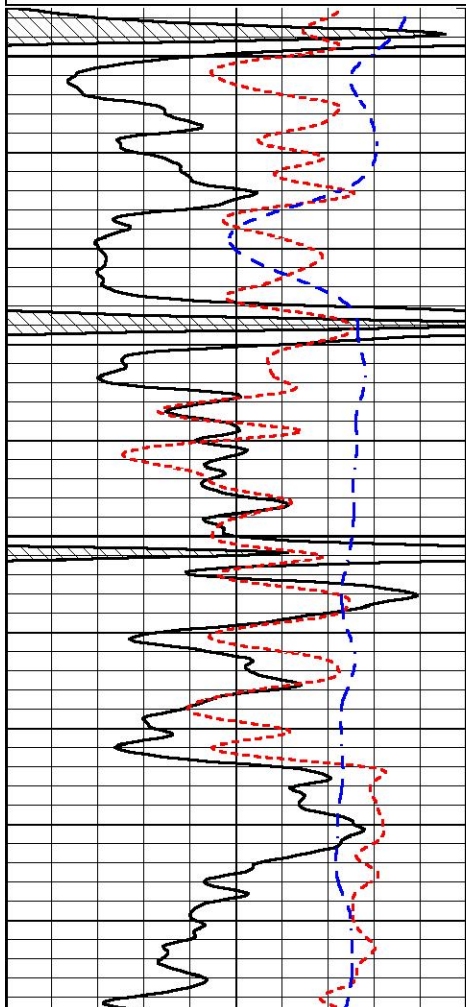
REPEAT SECTION

REPEAT PASS

Database File weilert_horacek #1.db
 Dataset Pathname StkMI/pass2.1
 Presentation Format _dil
 Dataset Creation Sun Nov 12 16:26:55 2023
 Charted by Depth in Feet scaled 1:240

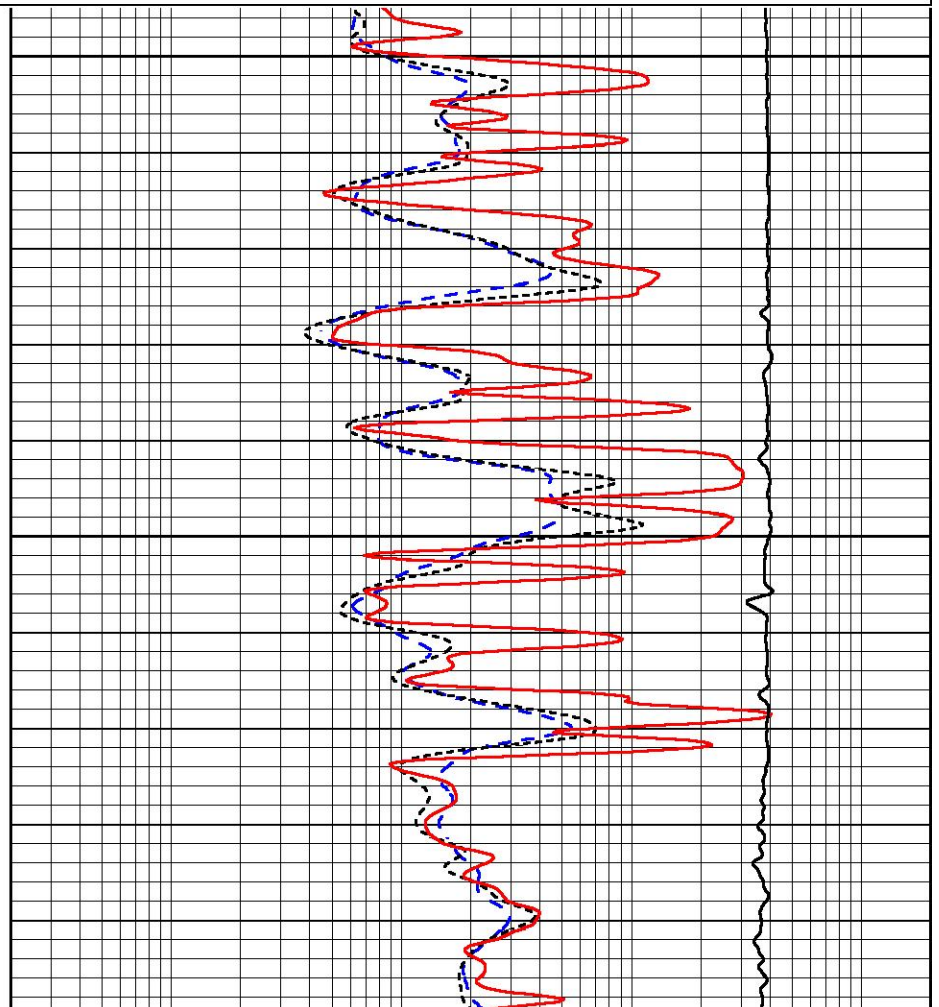
0	Gamma Ray (GAPI)	150
-160	RXORT	40
-200	SP (mV)	0

0.2	Deep Resistivity (Ohm-m)	2000
0.2	Medium Resistivity (Ohm-m)	2000
0.2	RLL3 (Ohm-m)	2000
10000	Line Tension (lb)	0



4400

4450



4500

	Readings		References			Results	
	Zero	Cal	Zero	Cal		m	b
Normal	0.0000	1.0000	0.0000	1.0000	Ohm-m	18500.0000	-1.0000
Inverse	0.0000	1.0000	0.0000	1.0000	Ohm-m	17000.0000	-0.7500
Caliper	1.0052	1.0858	5.0000	16.5000	in	142.7190	-138.8600

Compensated Density Calibration Report

Serial-Model: 307-25-M&W
Source / Verifier: 20762B / 2ci
Master Calibration Performed: Mon Oct 16 02:22:39 2023
Before Survey Verification Performed:
After Survey Verification Performed:

Master Calibration

	Density		Far Detector	Near Detector	
Magnesium	1.680	g/cc	4567.03	5405.52	cps
Aluminum	2.570	g/cc	1004.45	3659.64	cps
Spine Angle = 75.56			Density/Spine Ratio = 0.569		
	Size		Reading		
Small Ring	6.00	in	1.16		
Large Ring	18.00	in	1.01		

Compensated Neutron Calibration Report

Serial Number: 207
Tool Model: M&W

CALIBRATION

Detector	Readings	Target	Normalization
Short Space	6240.00 cps	1000.00 cps	1.6025
Long Space	460.00 cps	1000.00 cps	1.9500

PRE-SURVEY VERIFICATION

	Detector	Readings	Measured	Target
1)	Short Space	cps	pu	pu
	Long Space	cps		
2)	Short Space	cps	pu	pu
	Long Space	cps		
3)	Short Space	cps	pu	pu
	Long Space	cps		

POST-SURVEY VERIFICATION

	Detector	Readings	Measured	Target
1)	Short Space	cps	pu	pu
	Long Space	cps		
2)	Short Space	cps	pu	pu
	Long Space	cps		
3)	Short Space	cps	pu	pu
	Long Space	cps		

Gamma Ray Calibration Report

Serial Number:	102	
Tool Model:	M&W	
Performed:	Mon Sep 25 22:02:33 2023	
Calibrator Value:	1.0	GAPI
Background Reading:	0.0	cps
Calibrator Reading:	1.0	cps
Sensitivity:	0.5250	GAPI/cps



Company	Micheal D. Weilert Oil Company
Well	Horacek #1
Field	Wildcat
County	Ness
State	Kansas